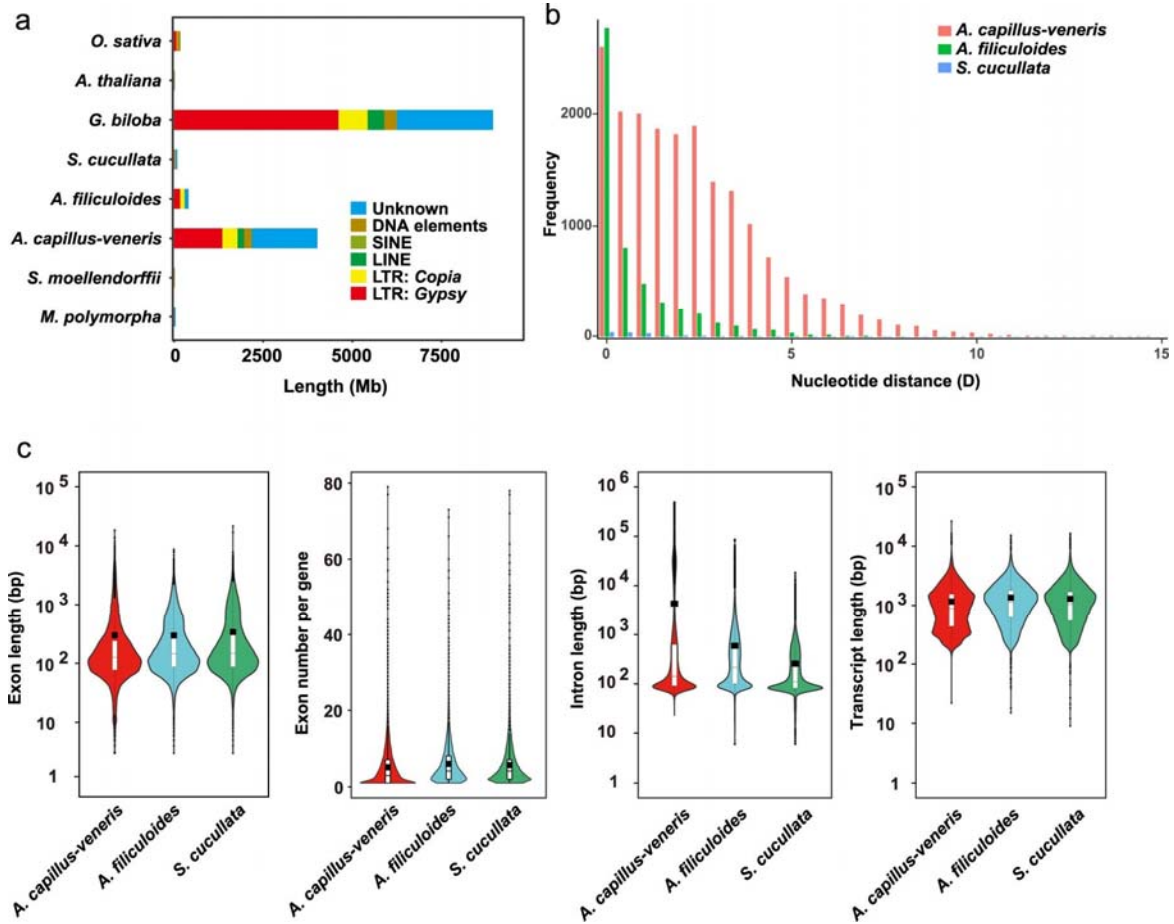


**Extended Data Fig. 2: Comparison of the genome features of *A. capillus-veneris* with those of *A. filiculoides* and *S. cucullata*.**

From: The genome of homosporous maidenhair fern sheds light on the euphyllphyte evolution and defences



**a**, Lengths of different repeat components in the indicated eight representative species across land plants. **b**, Distributions of nucleotide distance (D) calculated for LTR among three ferns, *A. capillus-veneris*, *A. filiculoides* and *S. cucullata*. **c**, Violin plot showing gene characteristics of ferns. The upper and lower edge of white frame in the violin plot represent the 75% and 25% quartiles, the central line denotes the median value, and the black square shows the mean value. The upper and lower terminal of line in the violin indicated the upper adjacent value and lower adjacent value, 1.5 × the interquartile range and outliers (solid points).