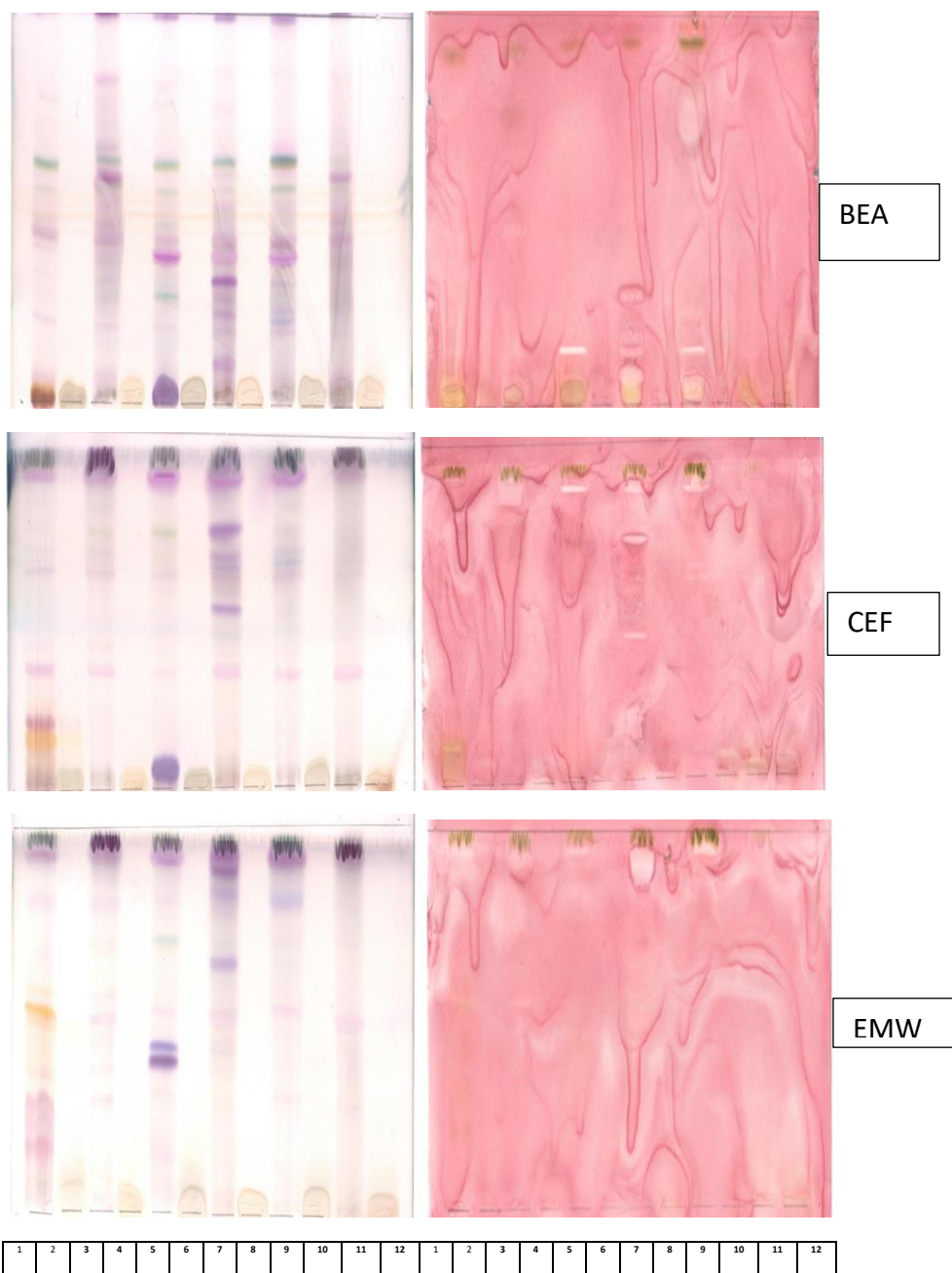
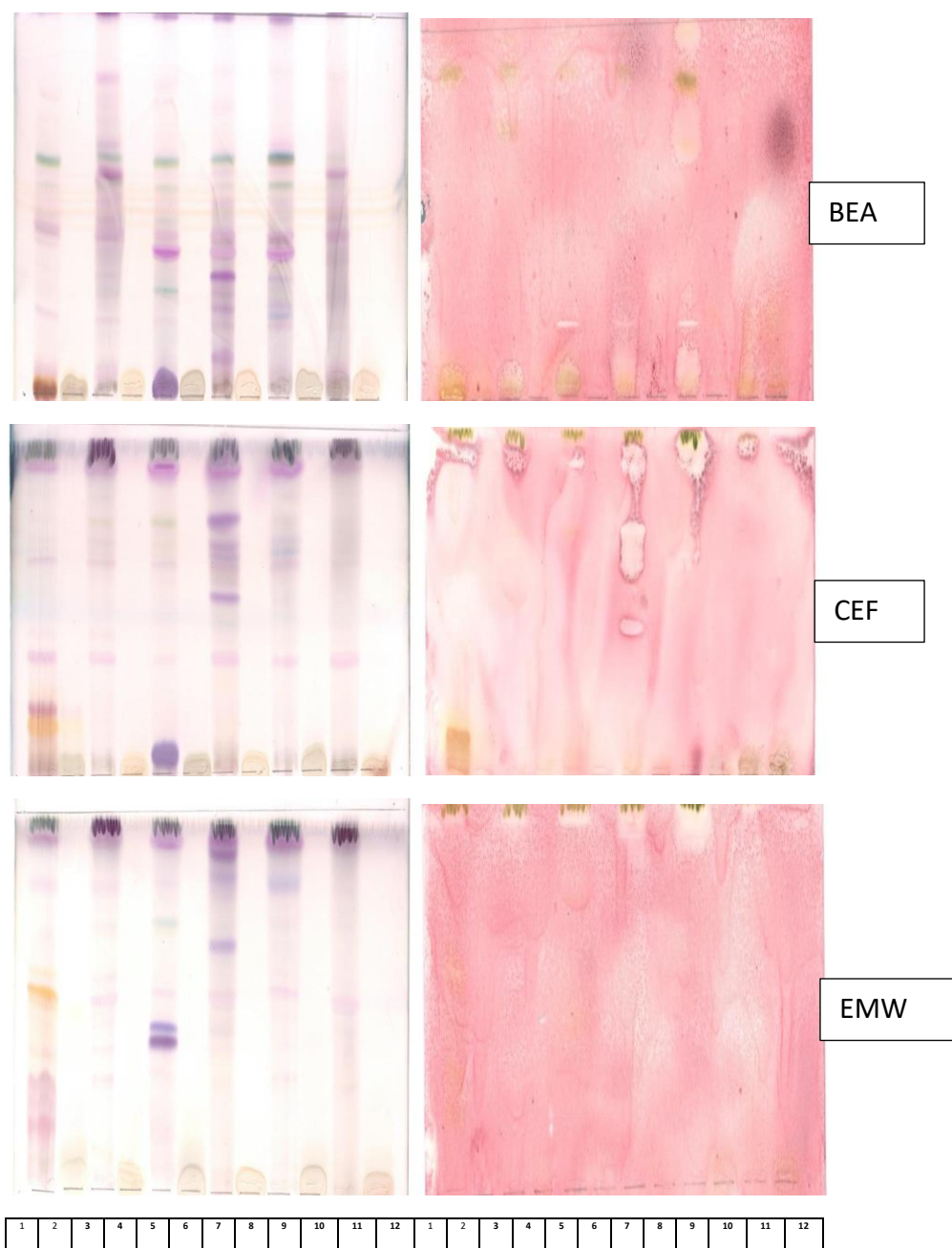


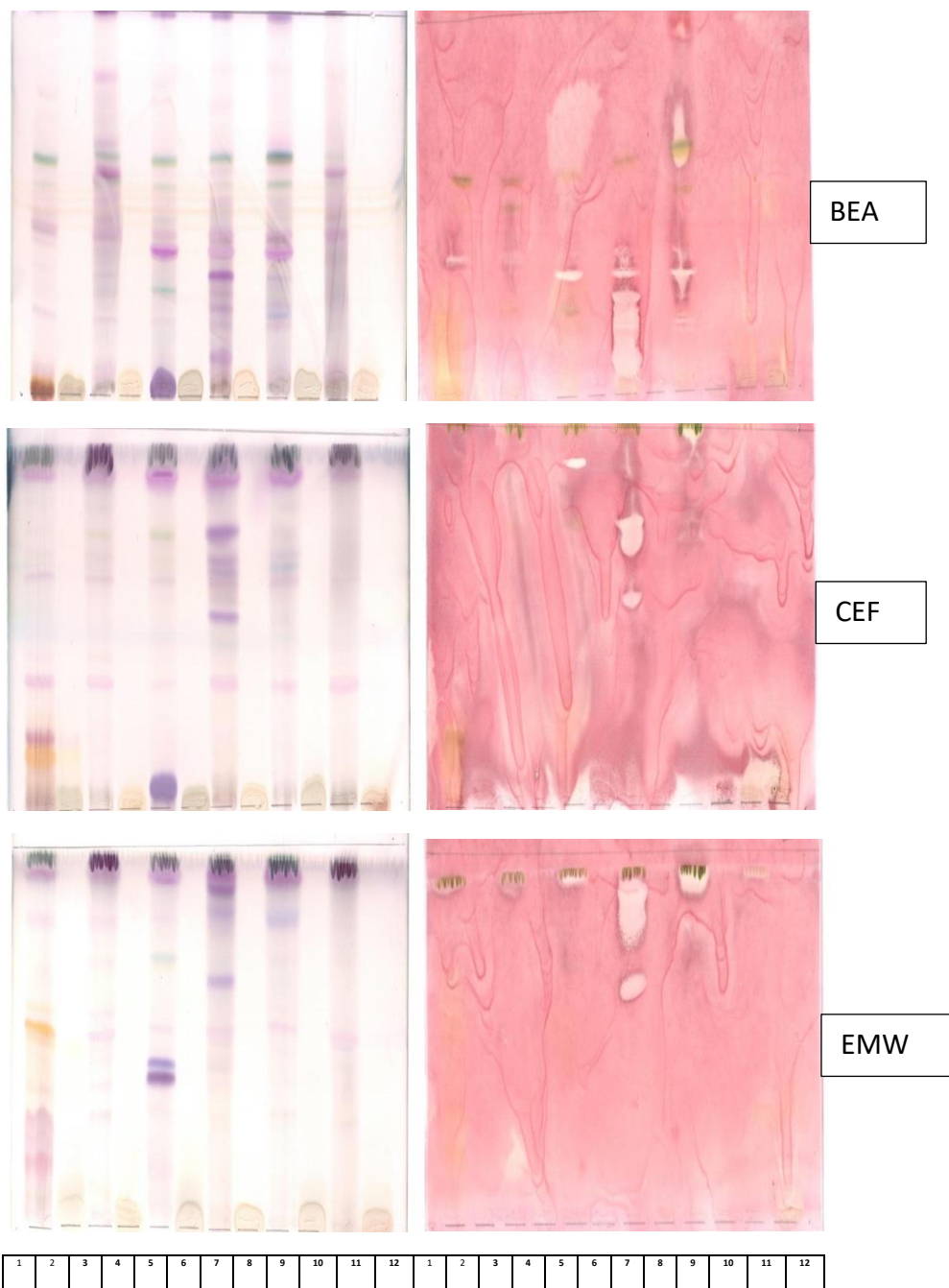
**Fig. S1.** Chromatographs of extracts of acetone (A), methanol (M), ethanol (E), cold water (CW) and hot water (HW) developed in Benzene: Ethanol: Ammonia hydroxide: 90:10:1 (BEA) (non-polar/basic), Chloroform: Ethyl acetate: Formic acid: 5:4:1 (CEF) (intermediate polar/acidic) and Ethyl acetate: Methanol: Water: 40:5:4.4 (EMW) (polar/neutral) and sprayed with vanillin in concentrated sulphuric acid.



**Fig S2.** Chromatographs and bioautographs of acetone and aqueous extracts of **1** - *A. laxiflora* (acetone), **2** - *A. laxiflora* (aqueous), **3** - *F. exasperata* (acetone), **4** - *F. exasperata* (aqueous), **5** - *M. lucida* (acetone), **6** - *M. lucida* (aqueous), **7** - *J. gossypifolia* (acetone), **8** - *J. gossypifolia* (aqueous), **9** - *O. gratissimum* (acetone), **10** - *O. gratissimum* (aqueous), **11** - *A. wilkesiana* (acetone) **12** - *A. wilkesiana* (aqueous) separated on TLC plates using EMW, BEA and CEF, sprayed with *E. coli* and 24 h later by INT. The white areas indicate zones of inhibition.

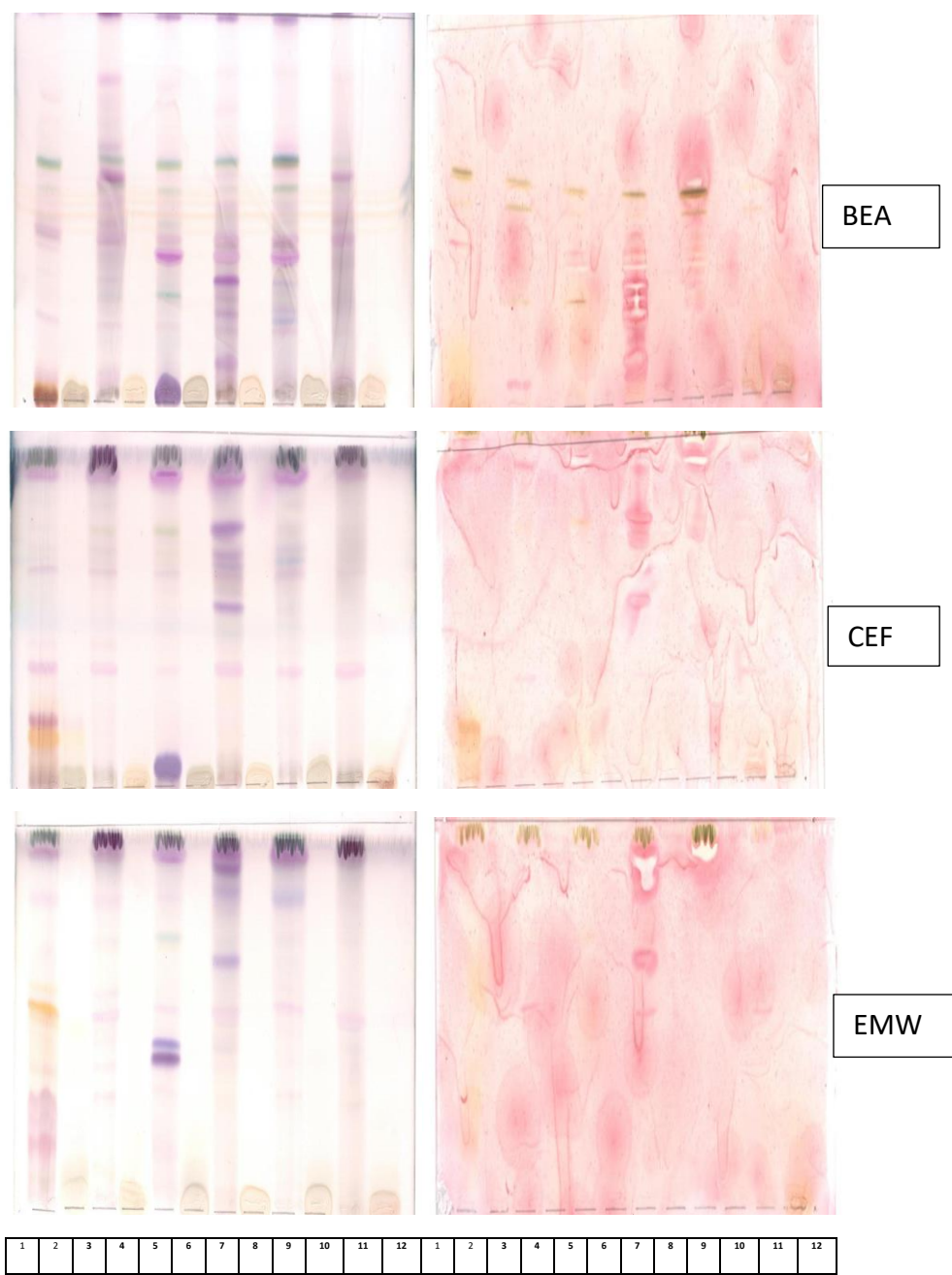


**Fig S3** . Chromatographs and bioautographs of acetone and aqueous extracts of **1** - *A. laxiflora* (acetone), **2** - *A. laxiflora* (aqueous), **3** - *F. exasperata* (acetone), **4** - *F. exasperata* (aqueous), **5** - *M. lucida* (acetone), **6** - *M. lucida* (aqueous), **7**- *J. gossypifolia* (acetone), **8** - *J. gossypifolia* (aqueous), **9** - *O. gratissimum* (acetone), **10** - *O. gratissimum* (aqueous), **11**- *A. wilkesiana* (acetone) **12**- *A. wilkesiana* (aqueous) separated on TLC plates using EMW, BEA and CEF, sprayed with *S. enteritidis* and 24 h later by INT. The white areas indicate zones of inhibition.

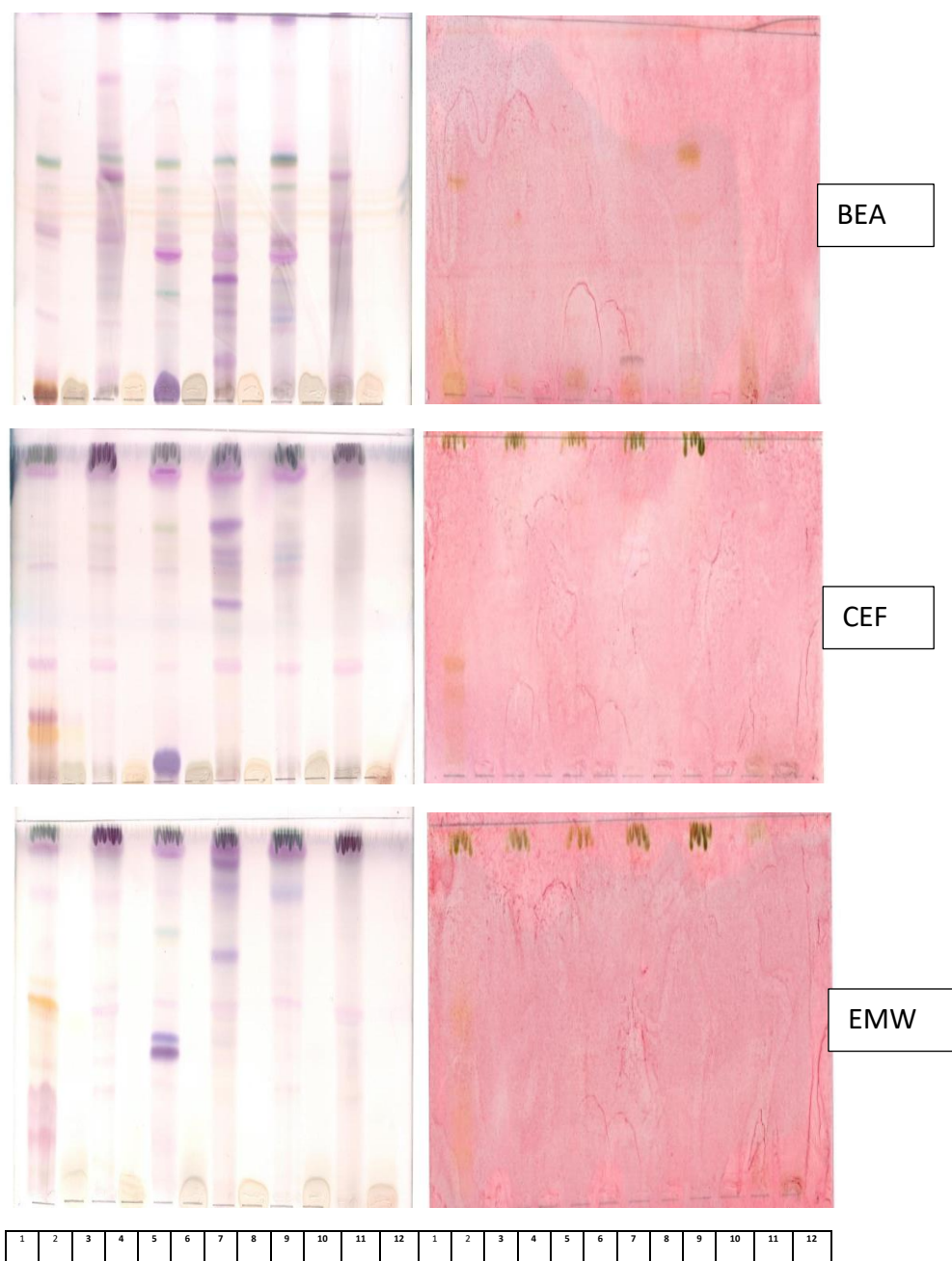


**Fig S4.** Chromatographs and bioautographs of acetone and aqueous extracts of **1** - *A. laxiflora* (acetone), **2** - *A. laxiflora* (aqueous), **3** - *F. exasperata* (acetone), **4** - *F. exasperata* (aqueous), **5** - *M. lucida*(acetone), **6** - *M. lucida* (aqueous), **7**- *J. gossypifolia* (acetone), **8** - *J. gossypifolia* (aqueous), **9** - *O. gratissimum* (acetone), **10** - *O. gratissimum* (aqueous), **11**- *A. wilkesiana* (acetone) **12**- *A. wilkesiana* (aqueous) separated on TLC plates using EMW, BEA and CEF, sprayed with *S. aureus* and 24 h later by INT. The white areas indicate zones of inhibition.

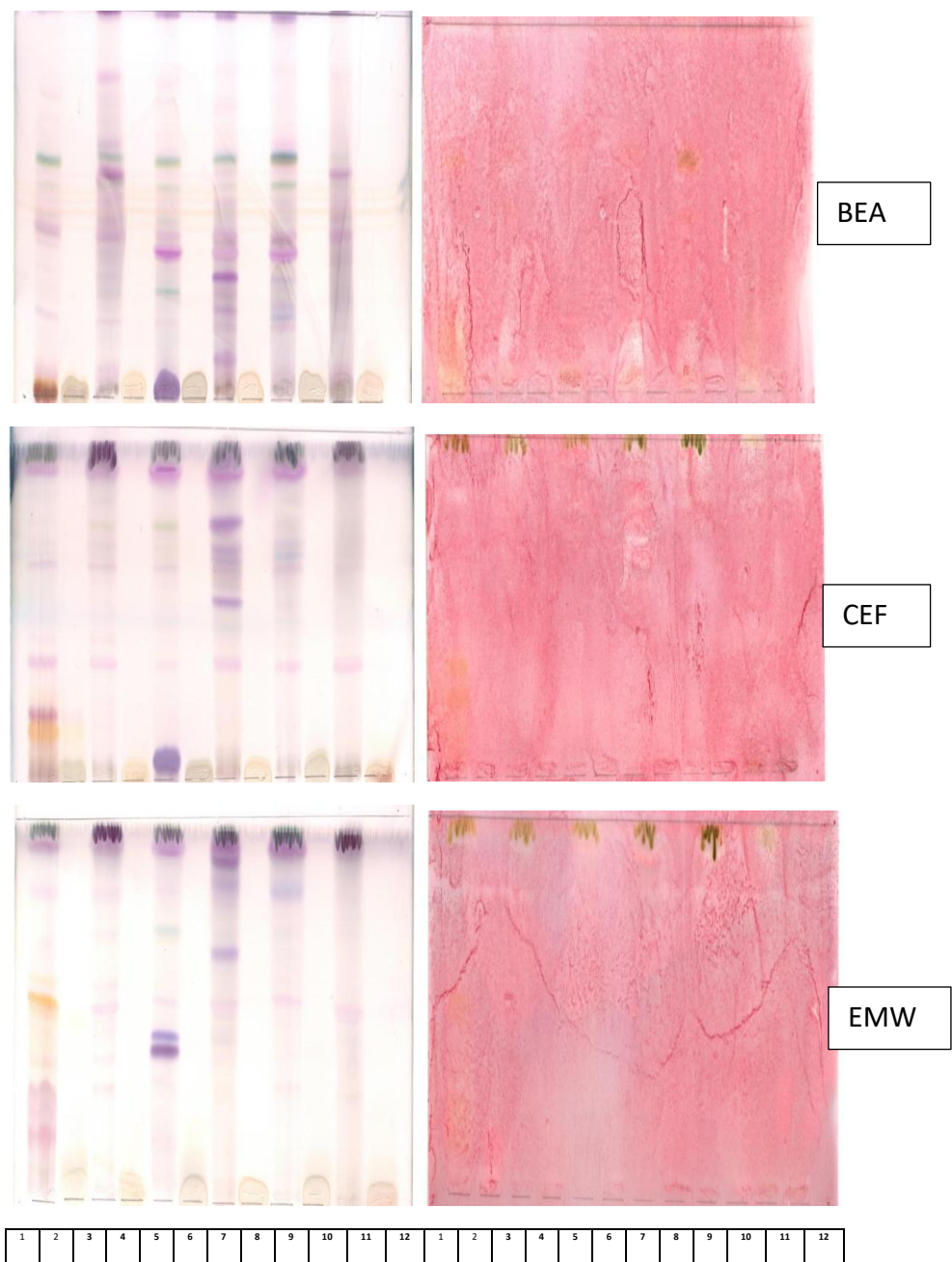




**Fig S5.** Chromatographs and bioautographs of acetone and aqueous extracts of **1 - *A. laxiflora* (acetone), 2 - *A. laxiflora* (aqueous), 3 - *F. exasperata* (acetone), 4 - *F. exasperata* (aqueous), 5 - *M. lucida* (acetone), 6 - *M. lucida* (aqueous), 7- *J. gossypifolia* (acetone), 8 - *J. gossypifolia* (aqueous), 9 - *O. gratissimum* (acetone), 10 - *O. gratissimum* (aqueous), 11- *A. wilkesiana* (acetone) 12- *A. wilkesiana* (aqueous)** separated on TLC plates using EMW, BEA and CEF, sprayed with *C. jejuni* and 24 h later by INT. The white areas indicate zones of inhibition.



**Fig S6.** Chromatographs and bioautographs of acetone and aqueous extracts of **1** - *A. laxiflora* (acetone), **2** - *A. laxiflora* (aqueous), **3** - *F. exasperata* (acetone), **4** - *F. exasperata* (aqueous), **5** - *M. lucida* (acetone), **6** - *M. lucida* (aqueous), **7** - *J. gossypifolia* (acetone), **8** - *J. gossypifolia* (aqueous), **9** - *O. gratissimum*, (acetone), **10** - *O. gratissimum* (aqueous), **11** - *A. wilkesiana* (acetone) **12** - *A. wilkesiana* (aqueous) separated on TLC plates using EMW, BEA and CEF, sprayed with *A. fumigatus* and 24 h later by INT. The white areas indicate zones of inhibition.



**Fig S7.** Chromatographs and bioautographs of acetone and aqueous extracts of **1** - *A. laxiflora* (acetone), **2** - *A. laxiflora* (aqueous), **3** - *F. exasperata* (acetone), **4** - *F. exasperata* (aqueous), **5** - *M. lucida* (acetone), **6** - *M. lucida* (aqueous), **7** - *J. gossypifolia* (acetone), **8** - *J. gossypifolia* (aqueous), **9** - *O. gratissimum* (acetone), **10** - *O. gratissimum* (aqueous), **11** - *A. wilkesiana* (acetone) **12** - *A. wilkesiana* (aqueous) separated on TLC plates using EMW, BEA and CEF, sprayed with *C. albicans* and 24 h later by INT. The white areas indicate zones of inhibition.