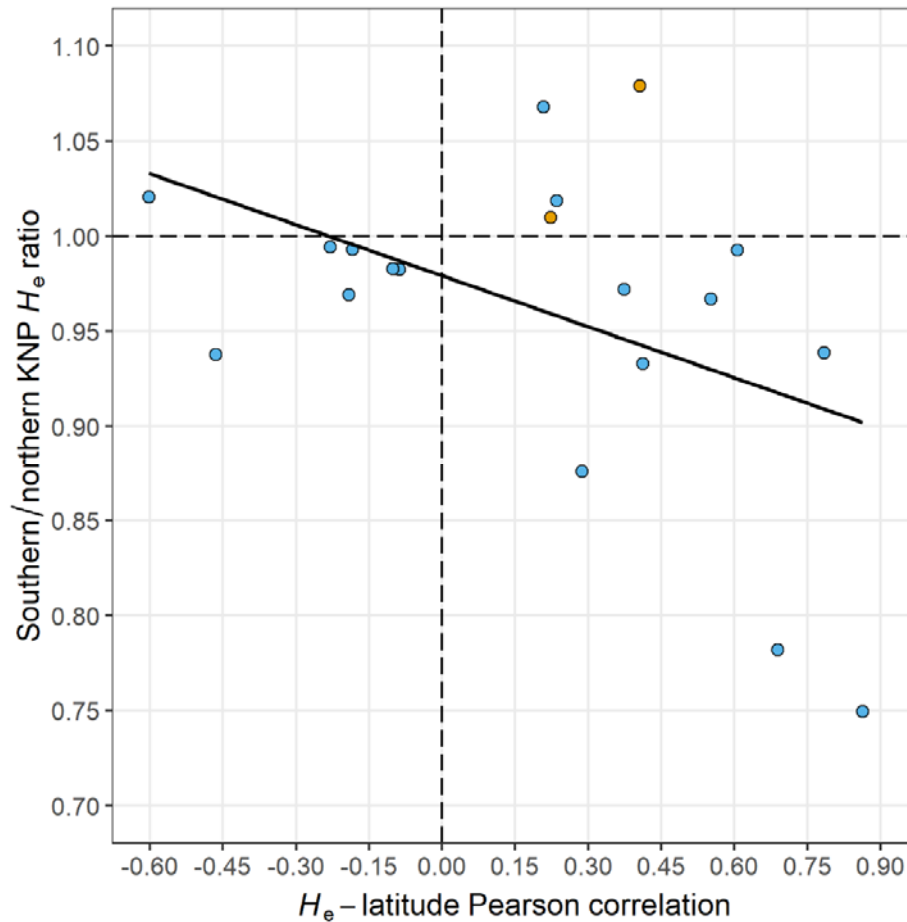


**Figure S4:** Correlation between per-locus southern/northern KNP  $H_e$  ratio and  $H_e$ -latitude Pearson correlation, based on 19 microsatellites



**Figure S3:** Correlation between per-locus southern/northern KNP  $H_e$  ratio and  $H_e$ -latitude Pearson correlation

Spearman  $\rho = -0.51$ ,  $P = 0.025$ ,  $N$  loci = 19.  $H_e$ : expected heterozygosity, KNP: Kruger NP. The correlation is based on microsatellites: *ABS010* (orange data point), *AGLA293* (orange data point), *BM0719*, *BM1824*, *BM3517*, *BM3205*, *BM4028*, *CSSM019*, *DIK020*, *ETH010*, *ETH225*, *ILSTS026*, *INRA006*, *INRA128*, *SPS115*, *TGLA057*, *TGLA0159*, *TGLA227* and *TGLA263*. For *ABS010* and *AGLA293* in northern KNP the weighted average  $H_e$  of microsatellite sets B and D was used (all other microsatellites set A only). The correlation was weighted by the square-root of the total sample size in KNP because of the relatively small average sample sizes in KNP, particularly southern KNP, for *ABS010* and *AGLA293* (northern KNP: 46 vs. 134 for the other microsatellites, southern KNP: 16 vs. 308 for the other microsatellites).