

It's Tuesday afternoon in the inner city of Pretoria. Douglas is navigating the overcrowded streets in search of lunch. The sidewalk is a place of anonymity and detachment, occasionally interrupted by unwanted conversations and unfamiliar activities. The absence of control is unsettling.

Underneath a solid concrete façade, a generous opening invites Douglas to escape the disorder of the street. Deep overhanging beams, a continuous paved floor and a folded brick ceiling entice him to enter the building. As he walks down the cascading stairs a large sunken down courtyard slowly reveals itself. The space is flooded with natural light from above. Deep recessed walls and floating concrete overhangs partially enclose the courtyard. Douglas takes a seat under the dappled shade of a white stinkwood. In the background he can see people cooking, eating and laughing around the glow of a fire. He notices a group of children running on the walkway above, behind the chimneys. As his eyes wander, he catches a glimpse of the chaos of the street. He gets up to buy some chicken from Naaila, a mielie from Grace and a cooldrink from a street trader displaying his drinks and snacks on the stairs. As lunchtime approaches and the crowds start streaming in, Douglas decides to take refuge at an empty table at the back of the room. A peaceful place to eat his lunch and feel in control. The light streaming in through the perforated brick wall is accompanied by the sound of a couple arguing. He can't help but overhear. Two ladies next to him sit and gossip as they peel and prepare vegetables for the kitchen. In the city, the act of refuge is always accompanied by a sense of exposure. It is the degree to which Douglas exposed himself and was exposed to others.

06 A PLACE OF URBAN REFUGE

CHAPTER



6.1

DESIGN ITERATIONS

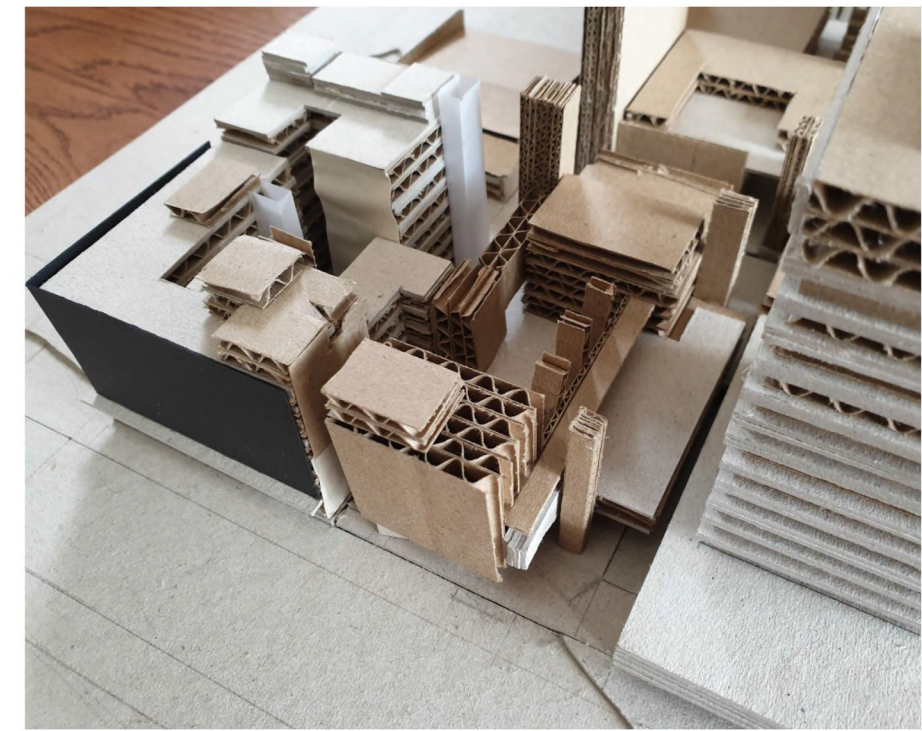
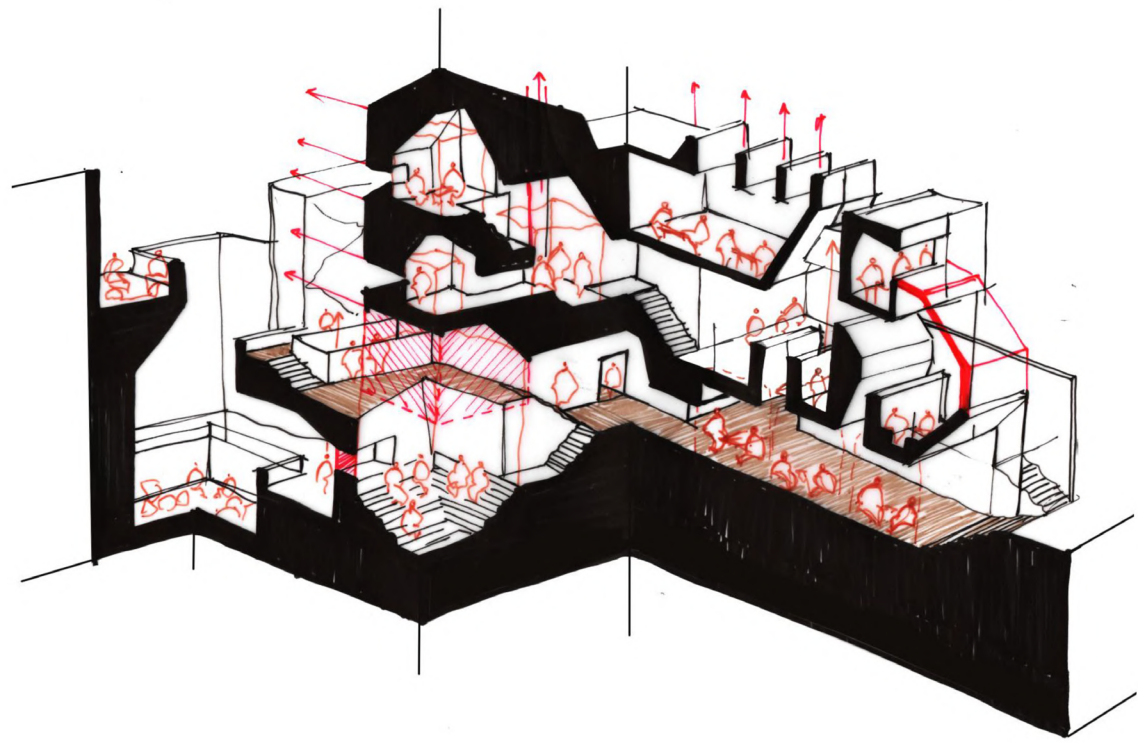
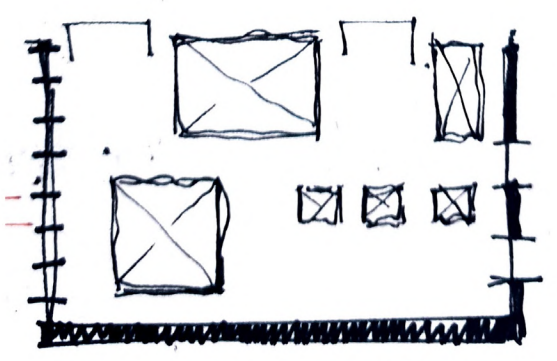
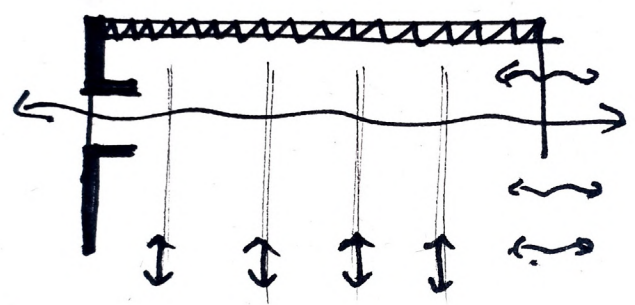
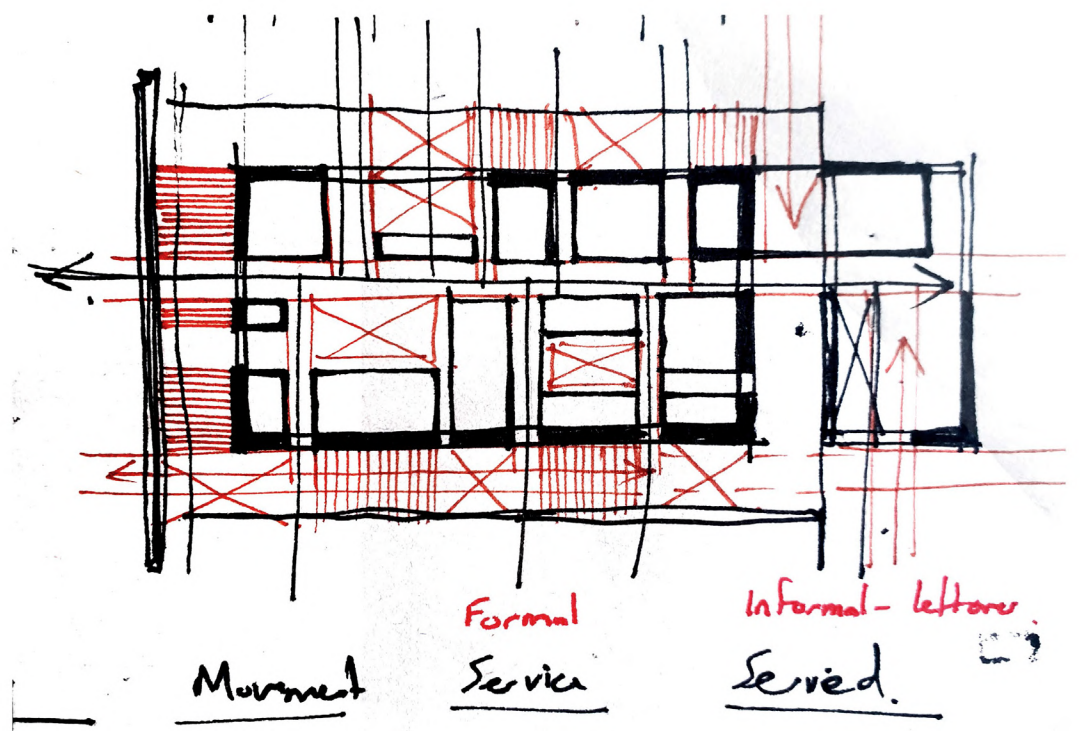
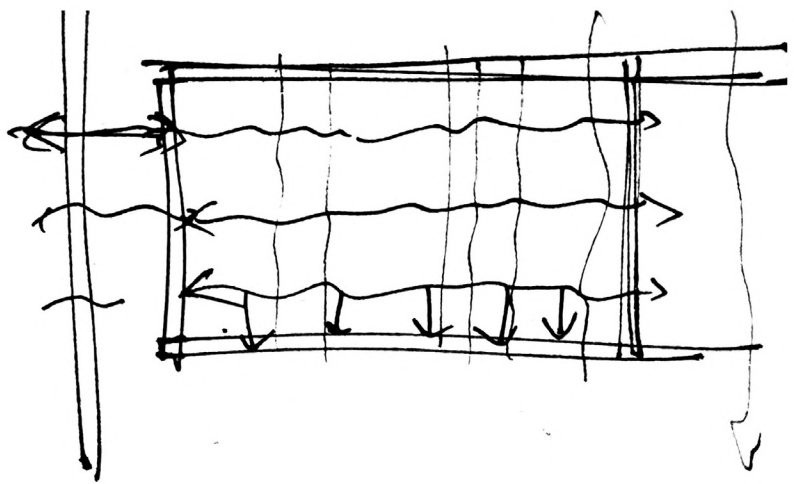
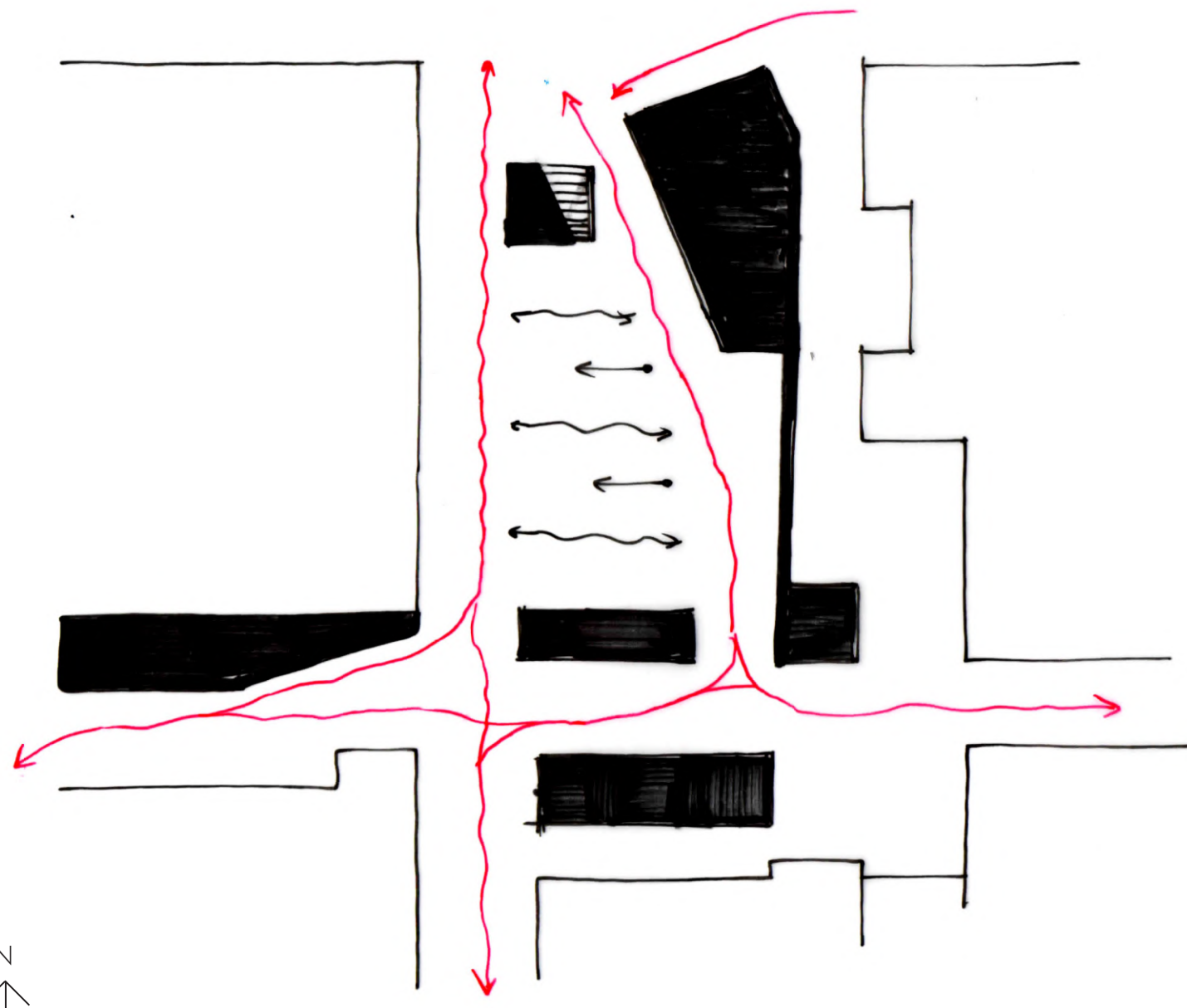


Fig. 84: Initial design explorations of enclosure, connection and spatial fragmentation (Author 2021)

Fig. 85: Initial model explorations (Author 2021)

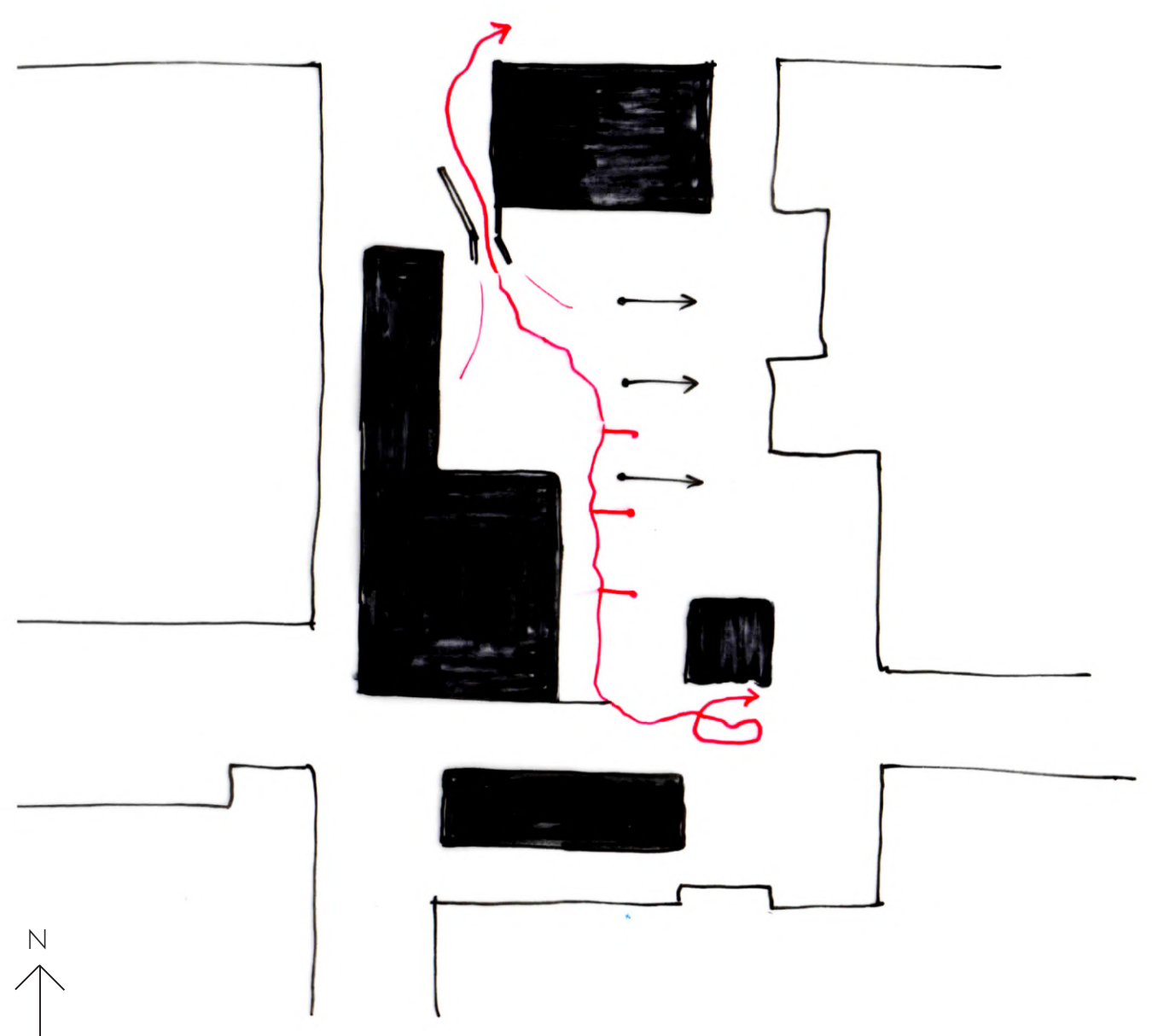


STREET



GROUND FLOOR PLAN

STREET



FIRST FLOOR PLAN

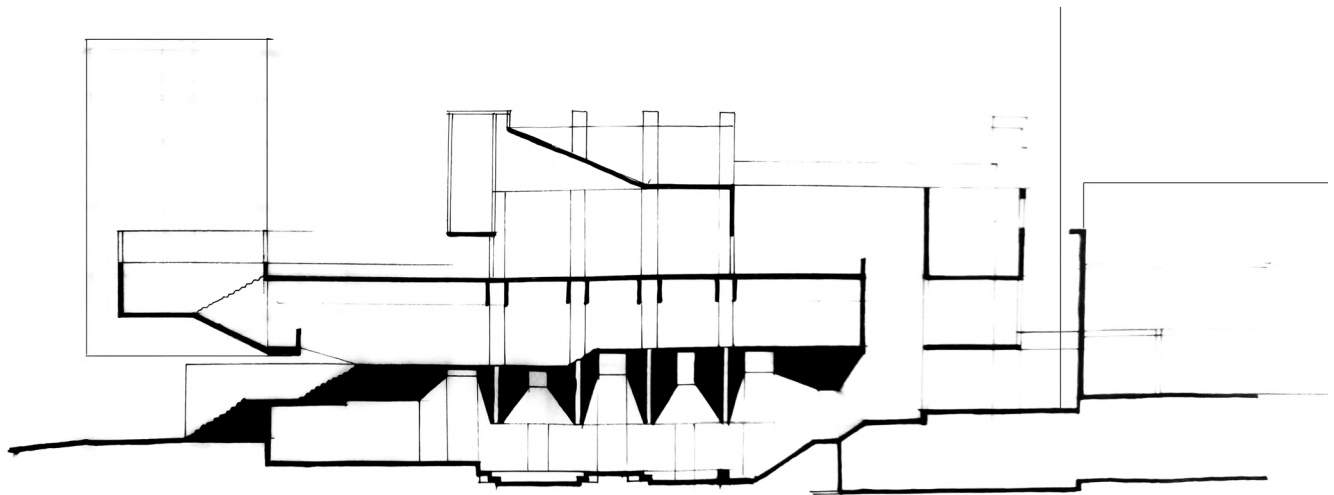


Fig. 86: Iteration 1 (Author 2021)

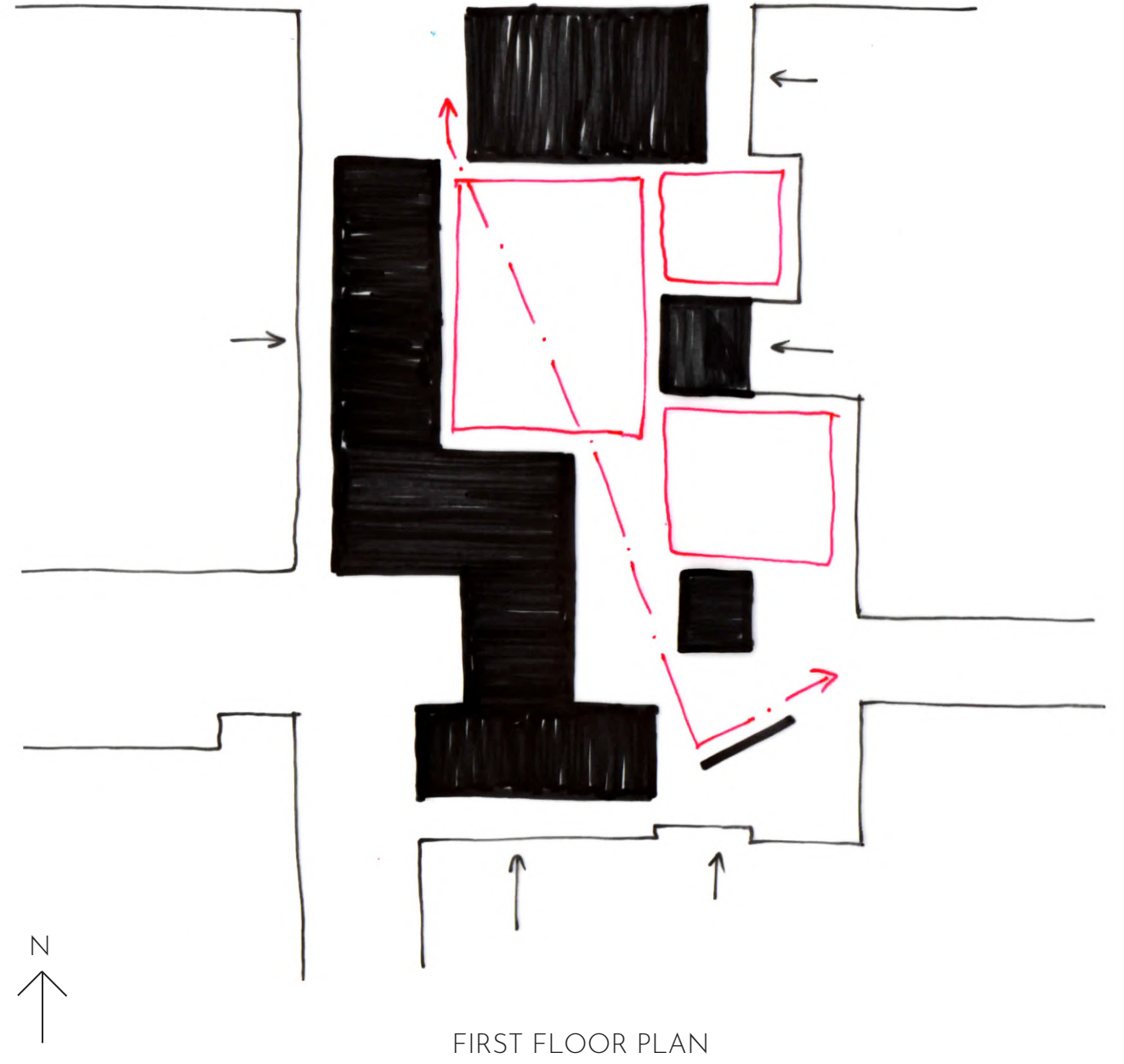
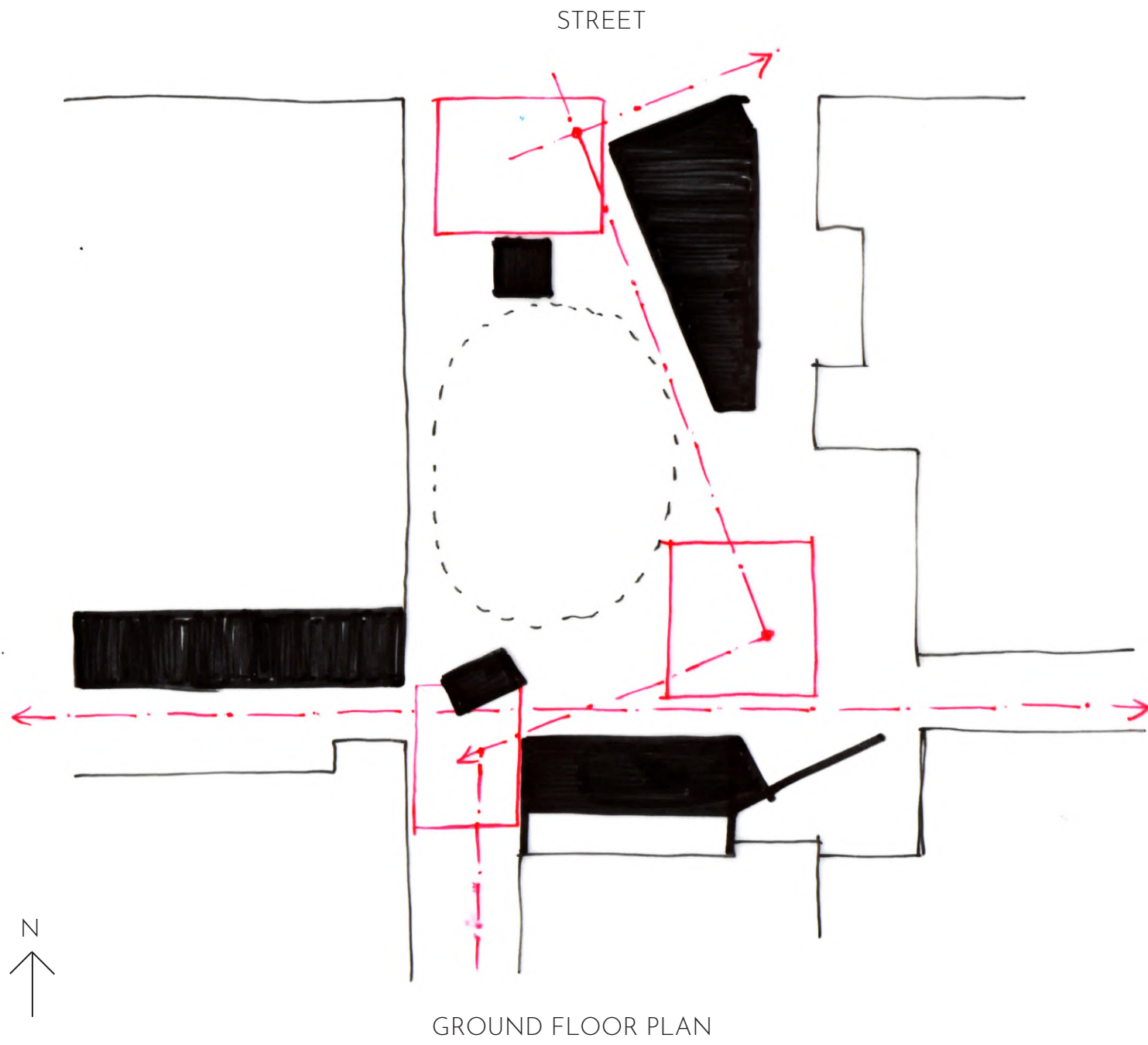
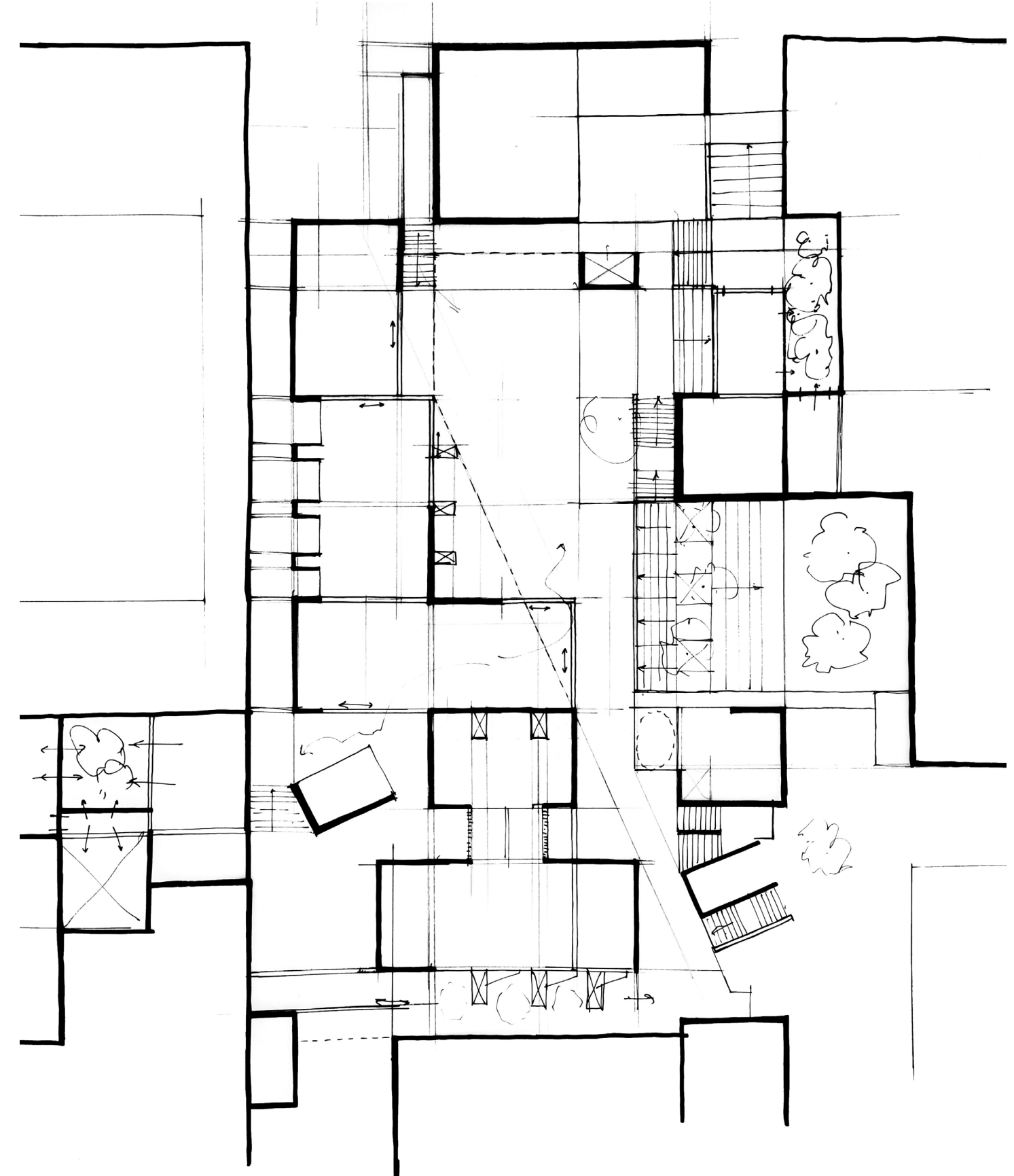
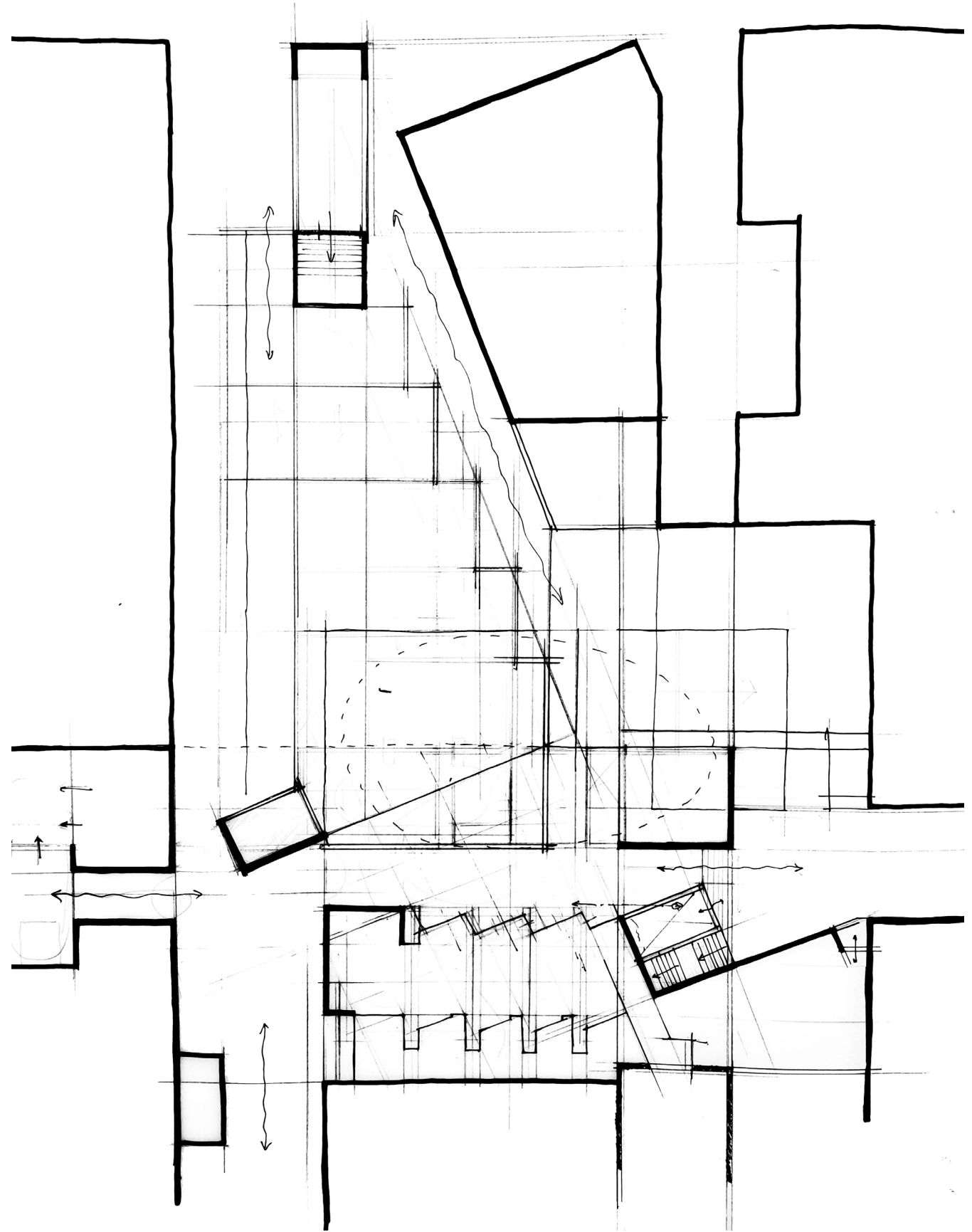


Fig. 87: Iteration 2 (Author 2021)

STREET

STREET



GROUND FLOOR PLAN

FIRST FLOOR PLAN



Fig. 88: Iteration 2 (Author 2021)

ITERATION 3

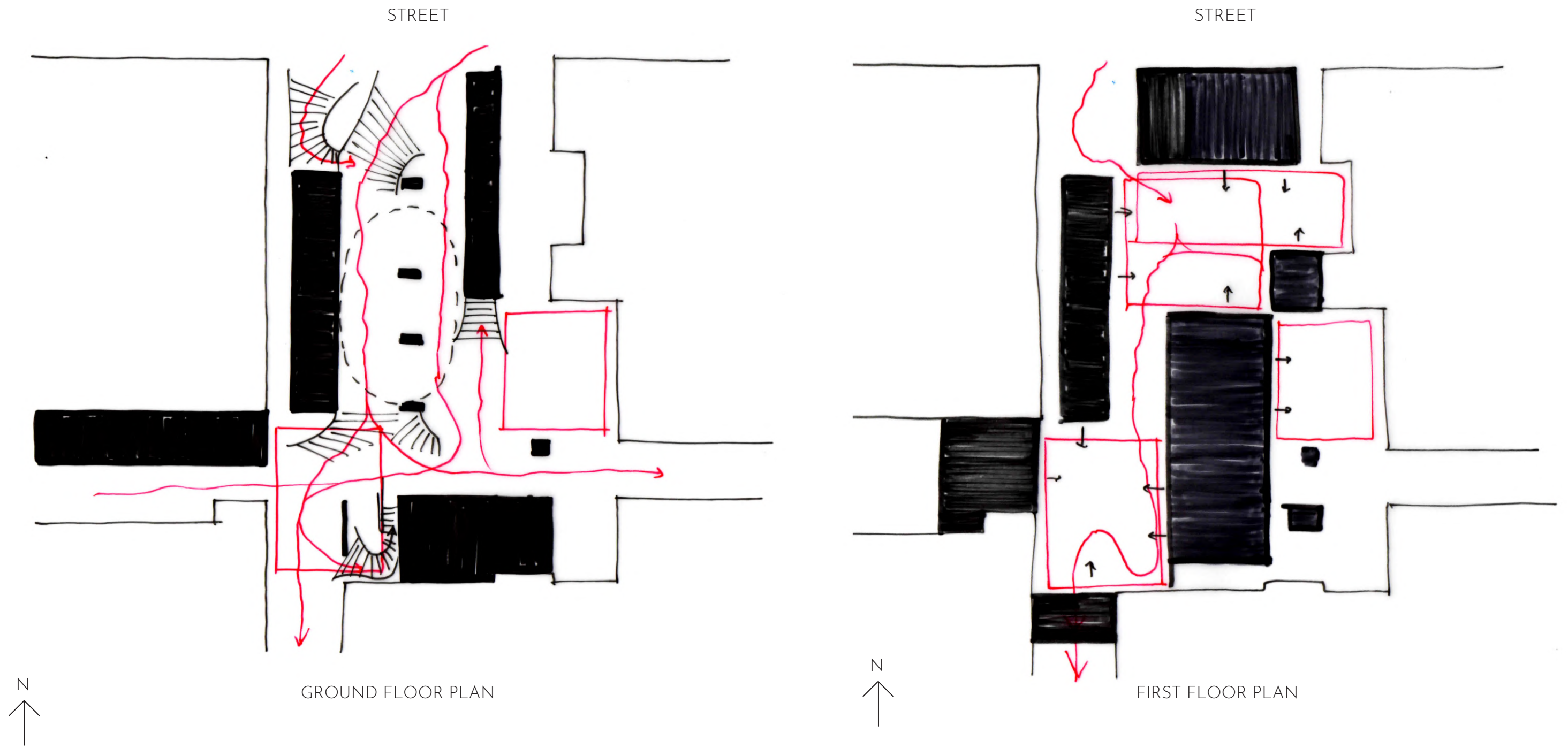
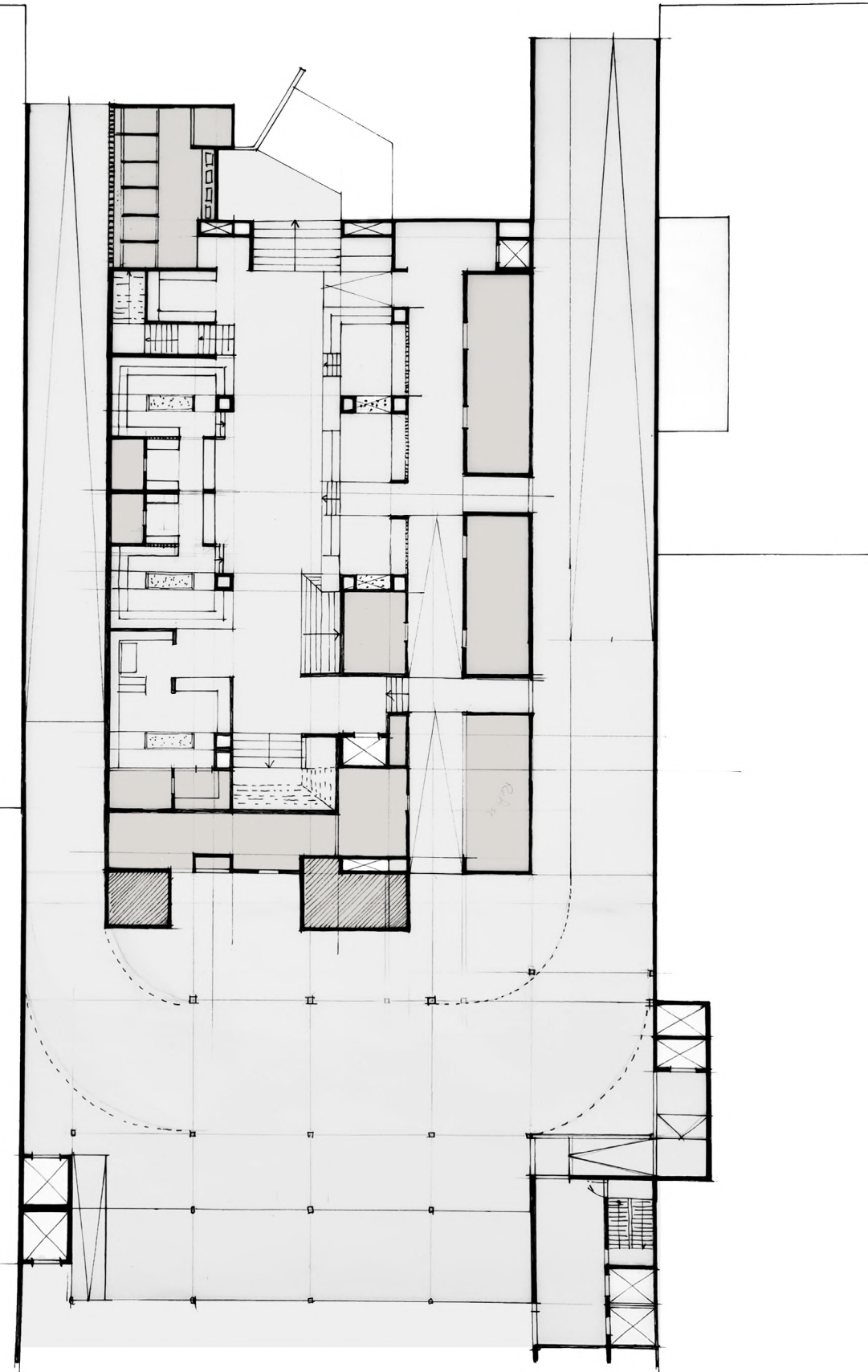
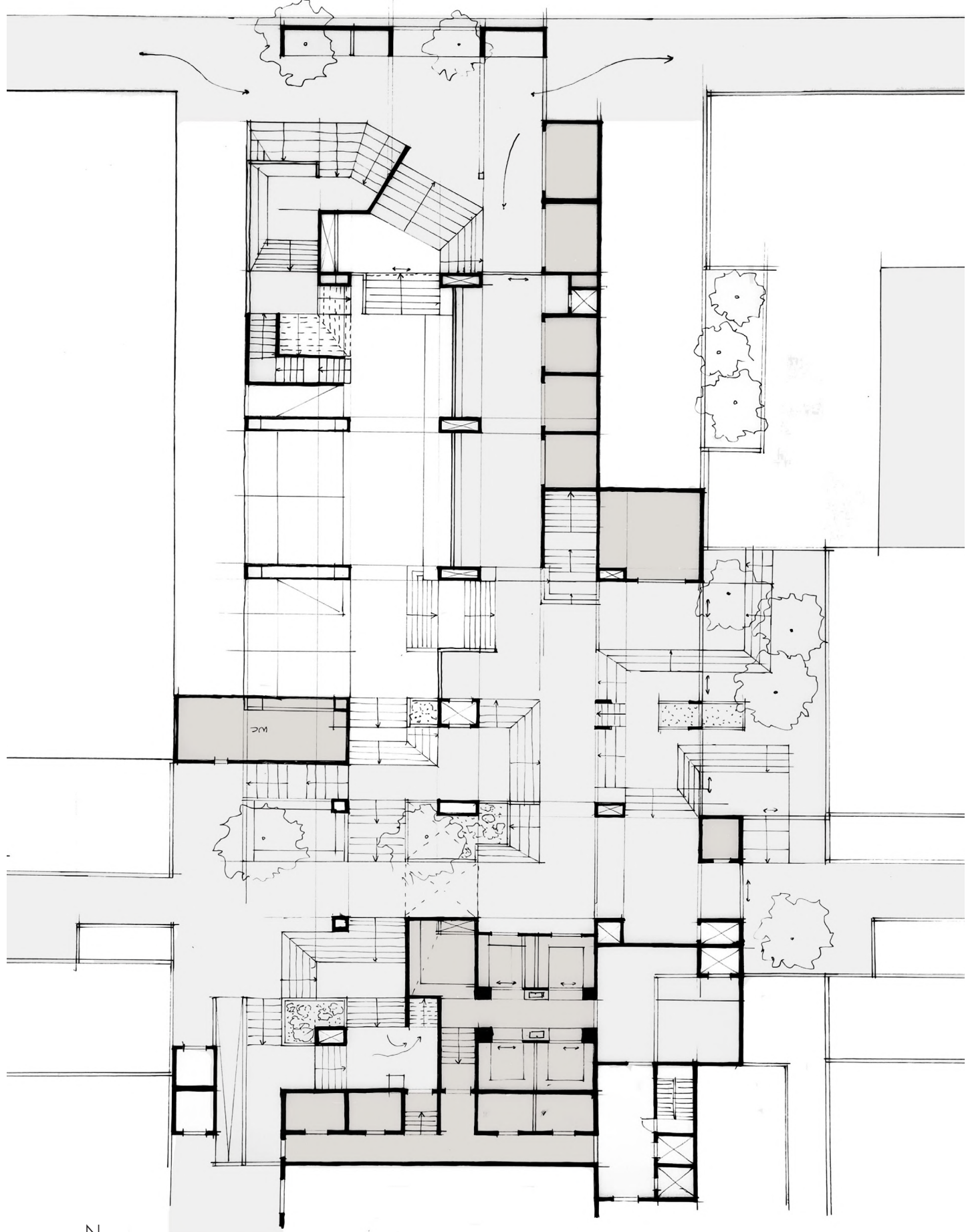


Fig. 89: Iteration 3 (Author 2021)

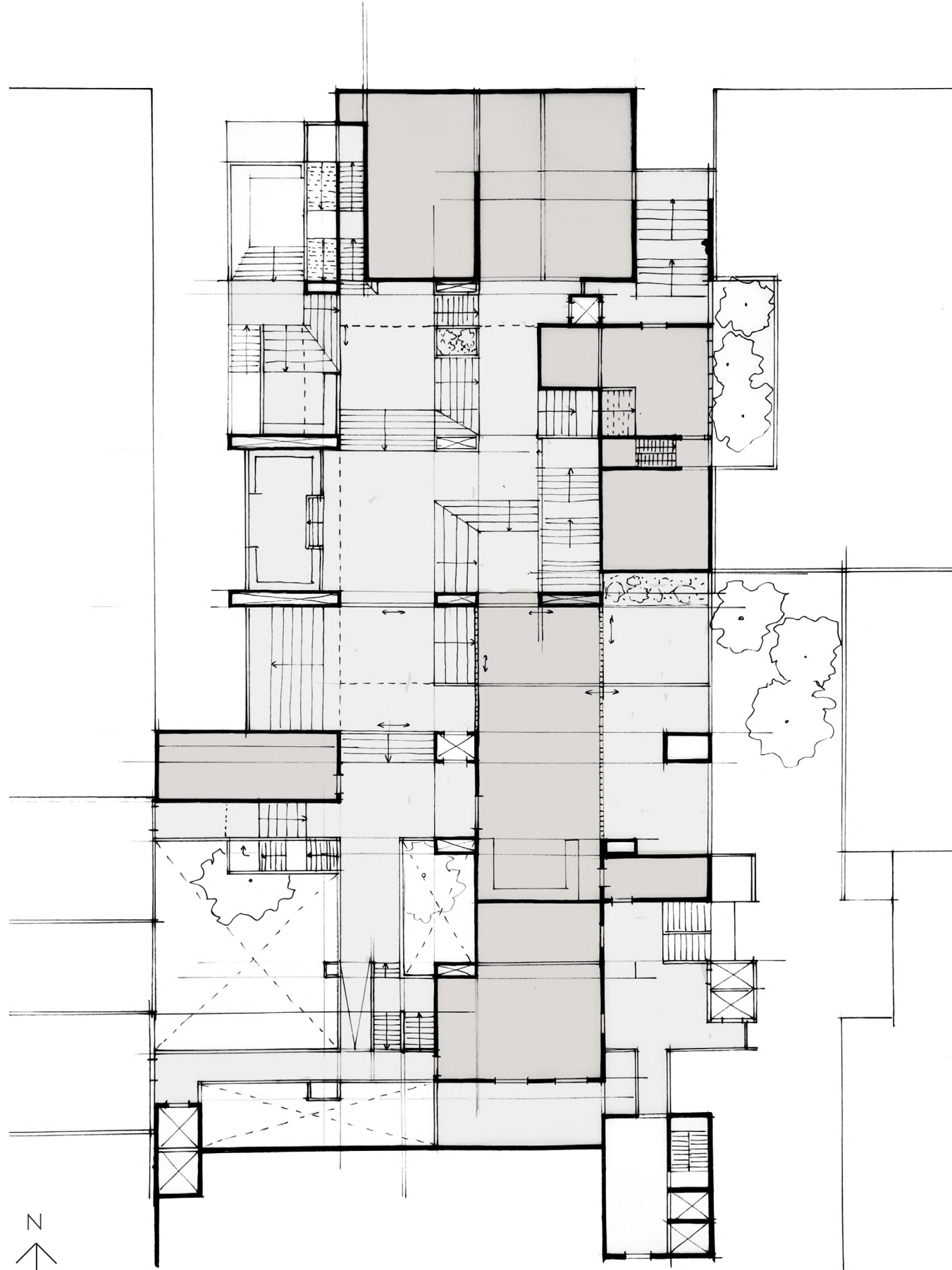


BASEMENT PLAN

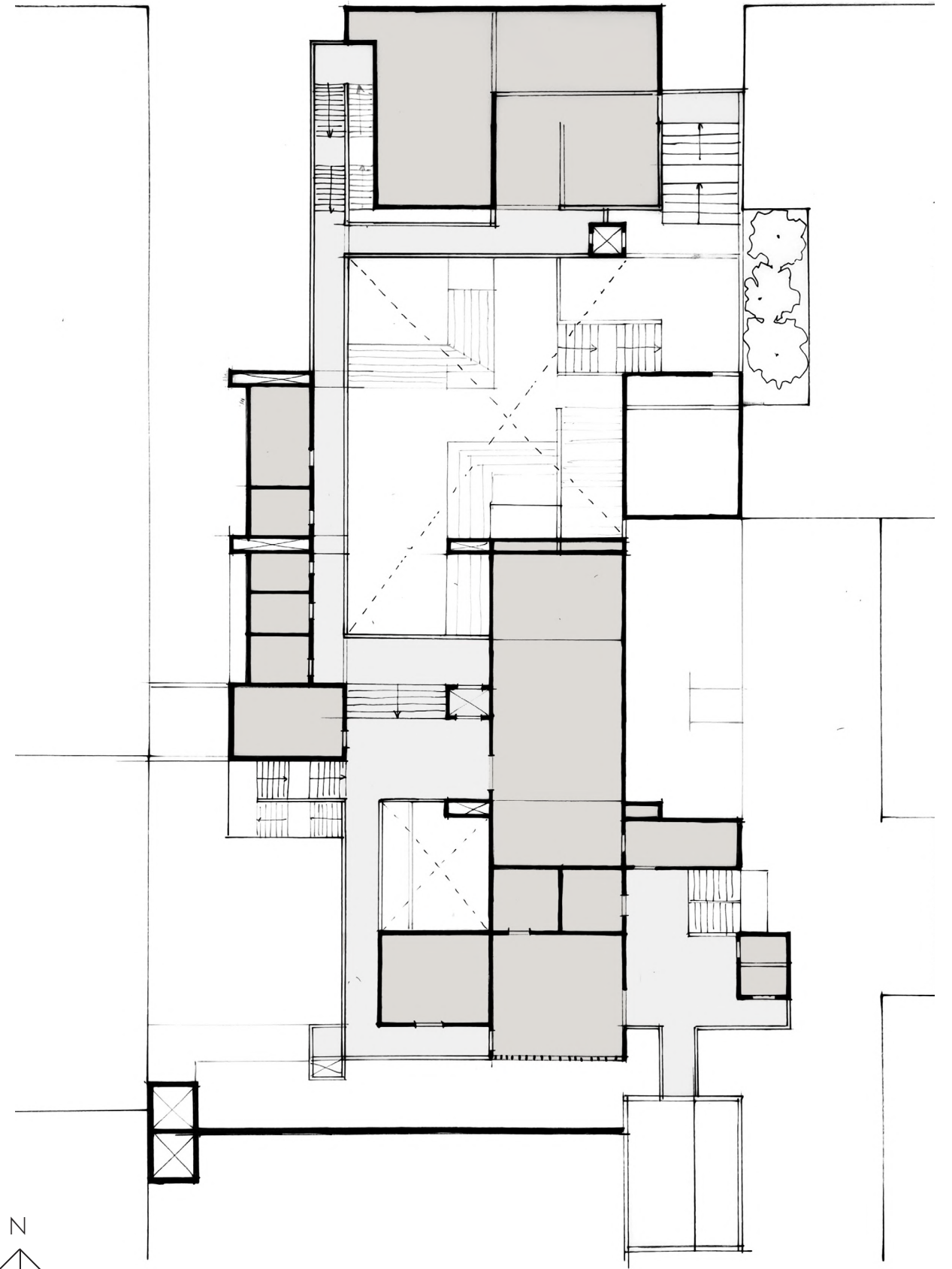


GROUND FLOOR PLAN

Fig. 90 Refinement of iteration 3 (Author 2021)



FIRST FLOOR PLAN



SECOND FLOOR PLAN

Fig. 91: Refinement of iteration 3 (Author 2021)

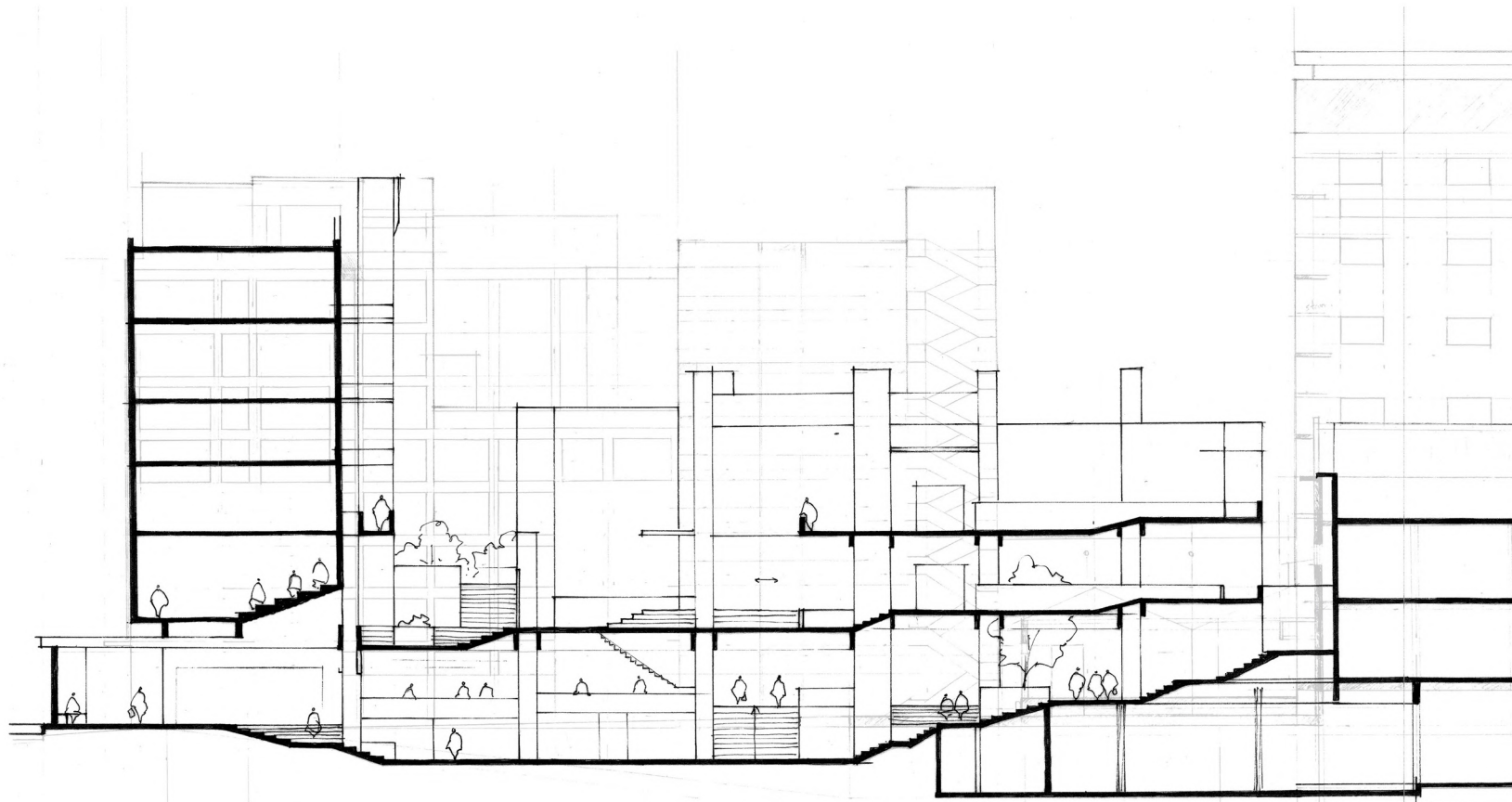


Fig. 92: Logitudunal section of iteration 3(Author 2021)

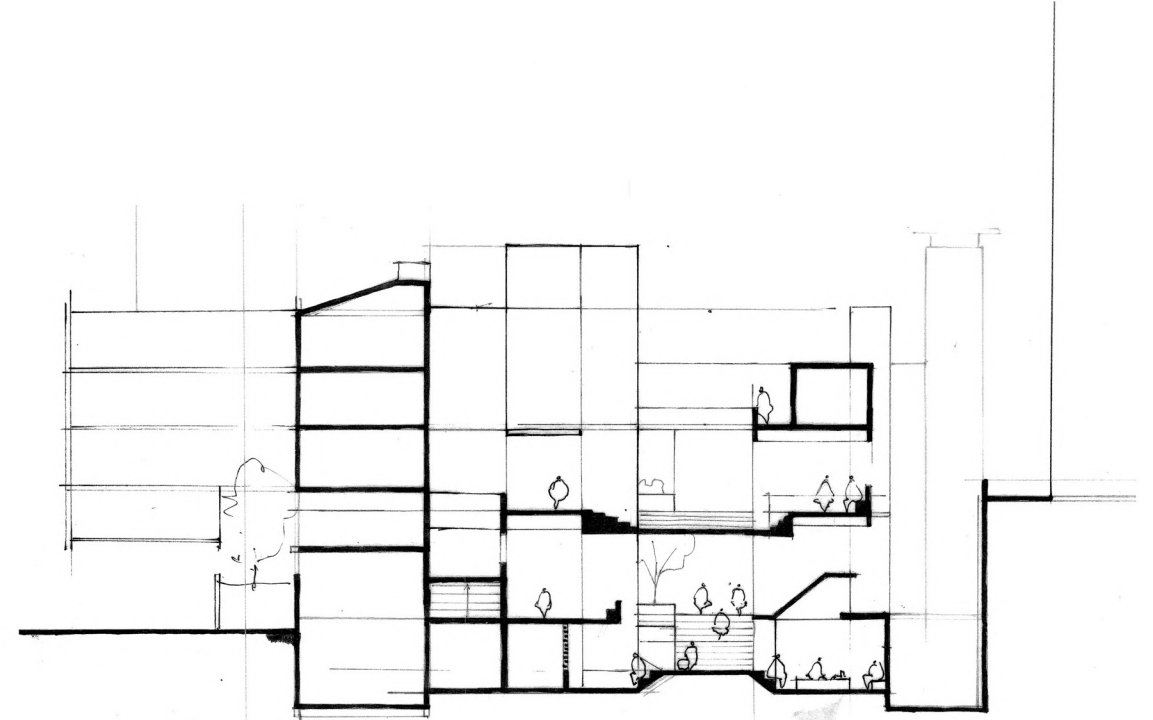


Fig. 93: Cross section of iteration 3(Author 2021)

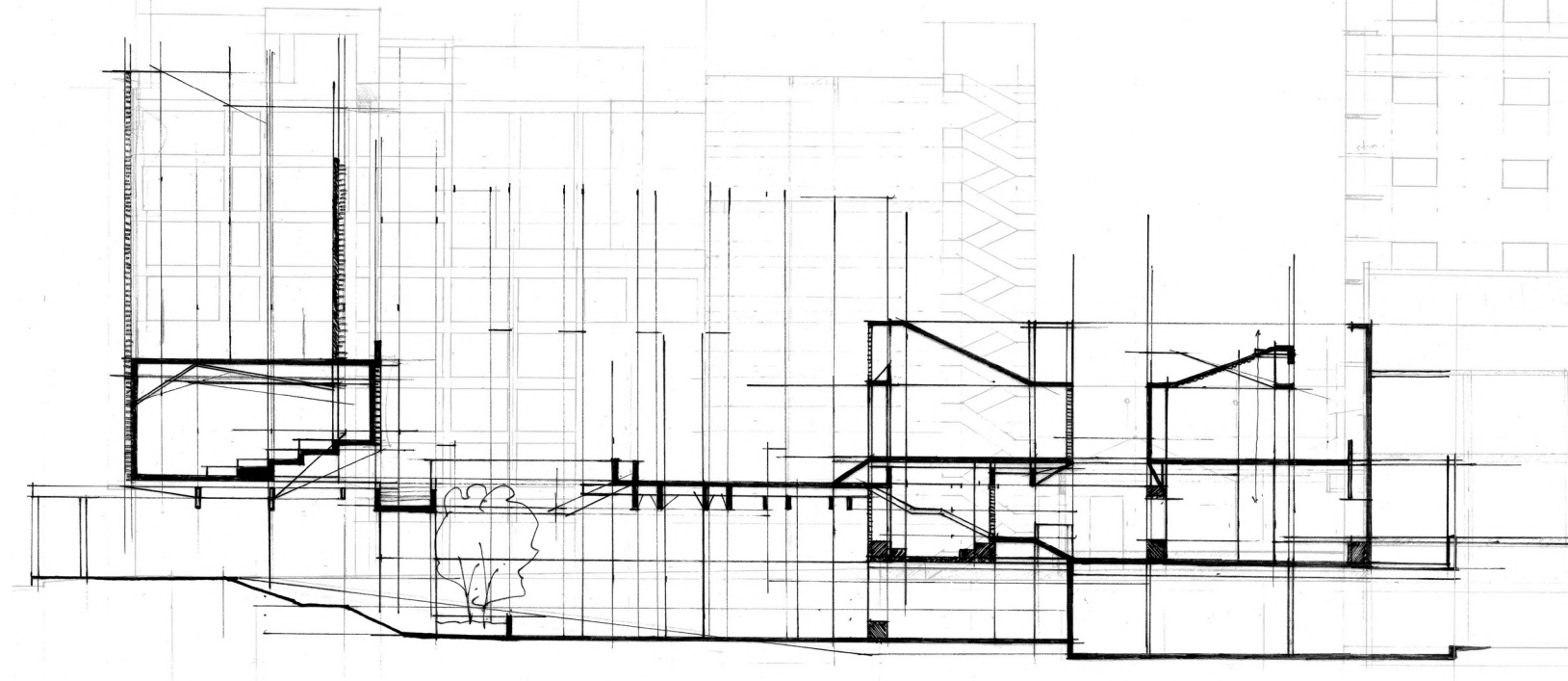


Fig. 94: Logitudunal section of iteration 4 (Author 2021)

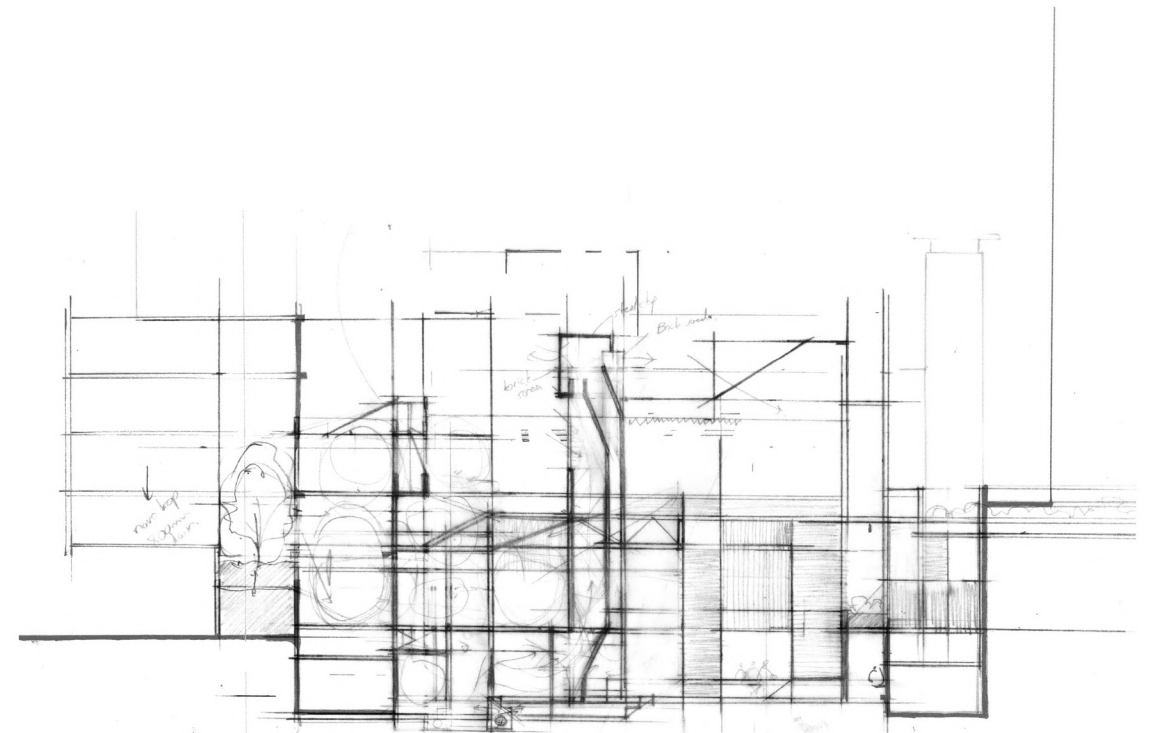


Fig. 95: Cross section of iteration 4(Author 2021)



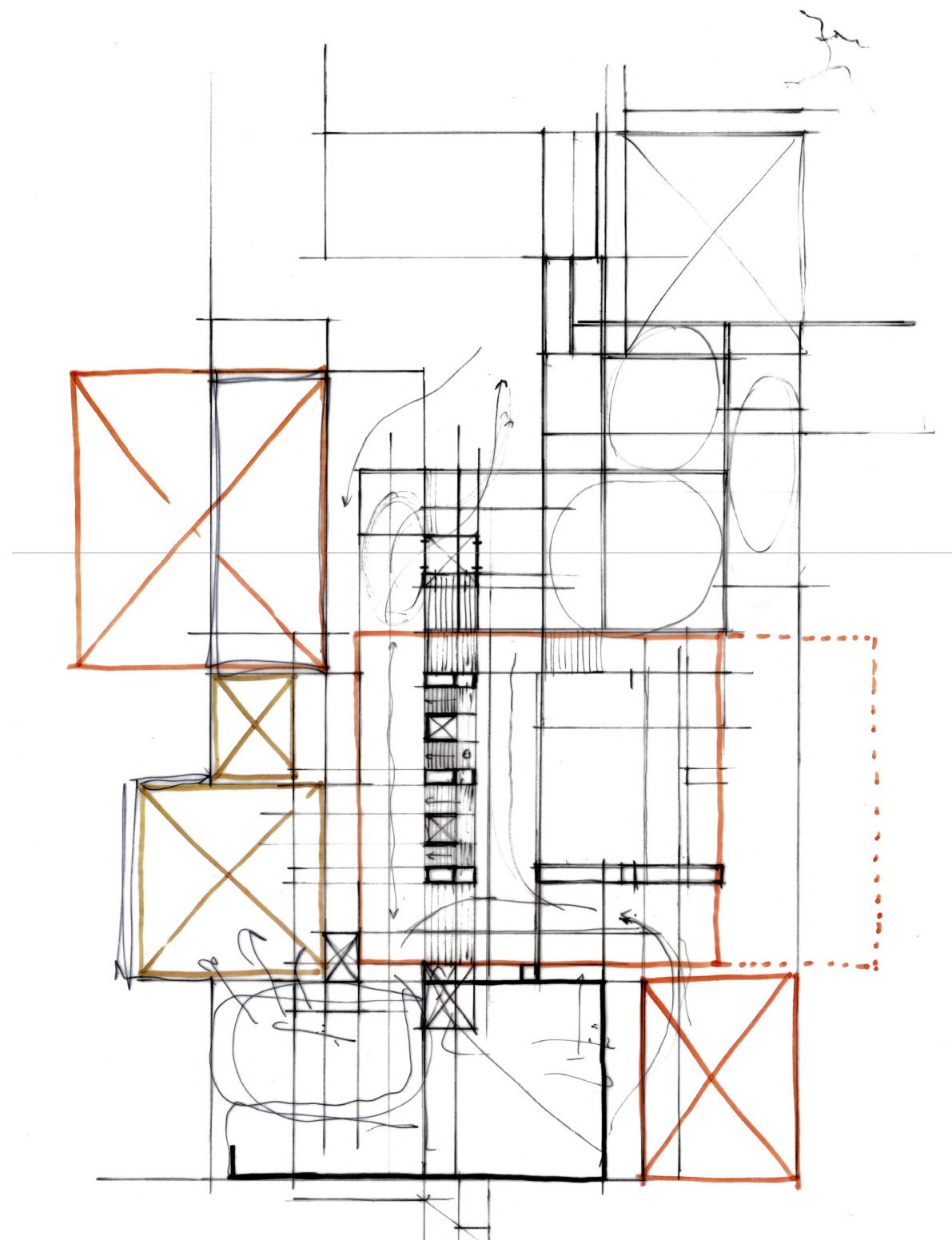


Fig. 96: Exploration of partial hierarchy and organisation (Author 2021)

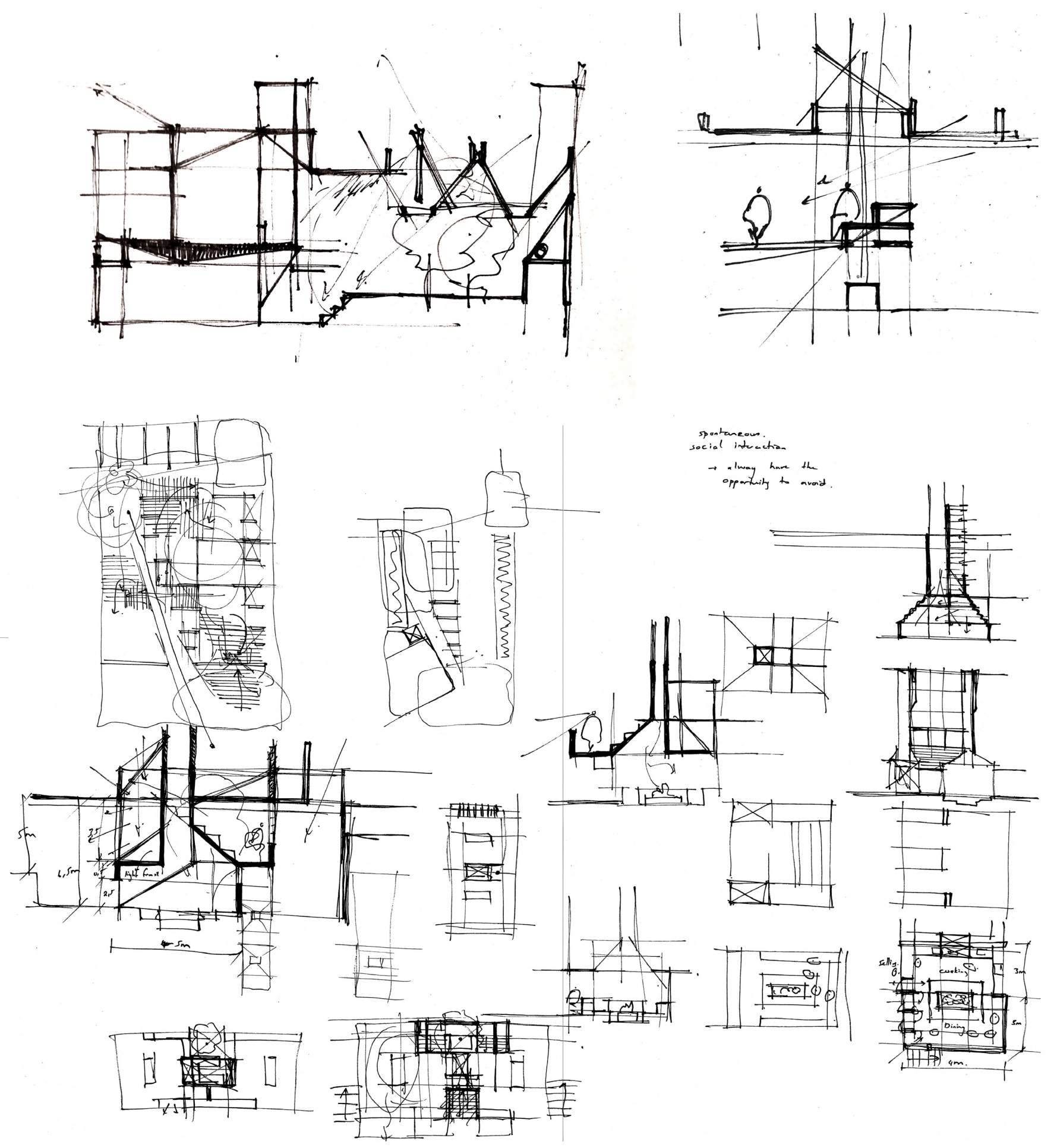


Fig. 97: Process sketches (Author 2021)

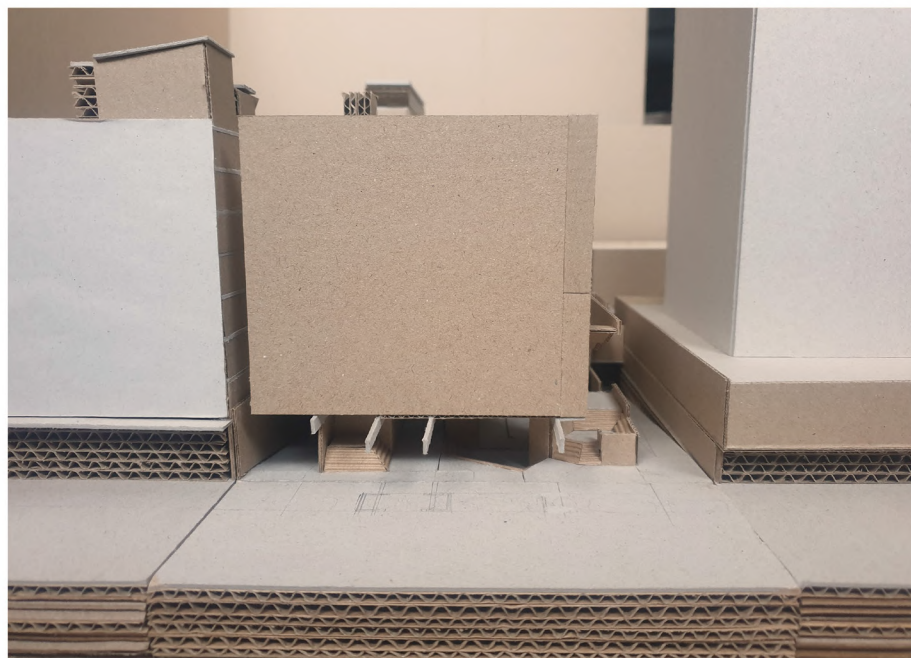
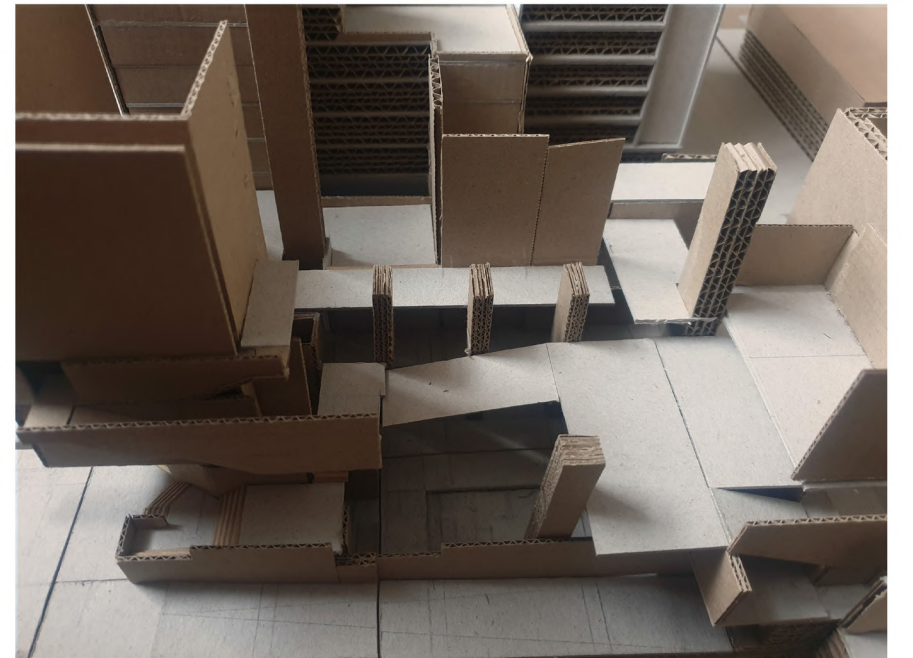
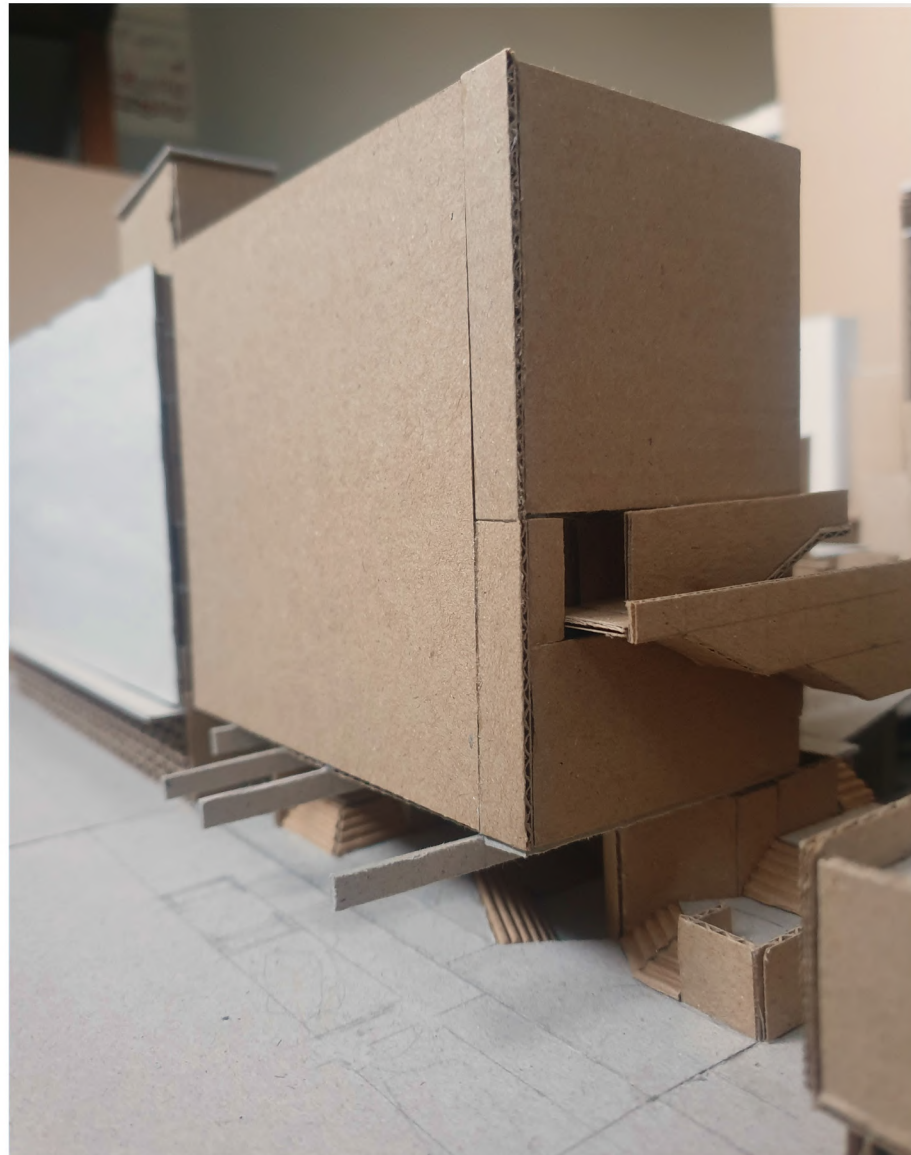


Fig. 98: Model explorations (Author 2021)



6.2

FINAL DESIGN DOCUMENTATION

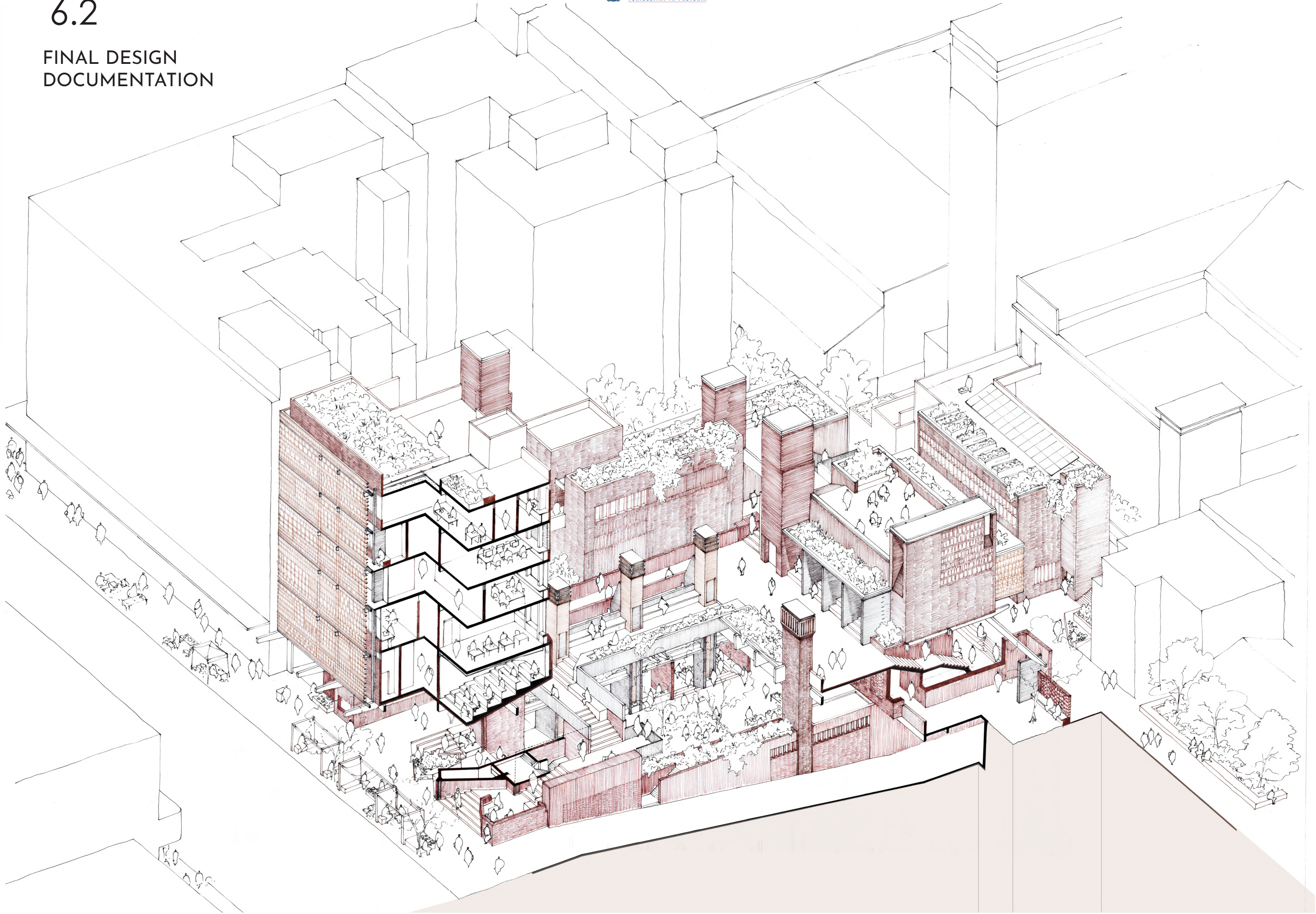


Fig. 99: Sectional axonometric drawing of final design (Author 2021)

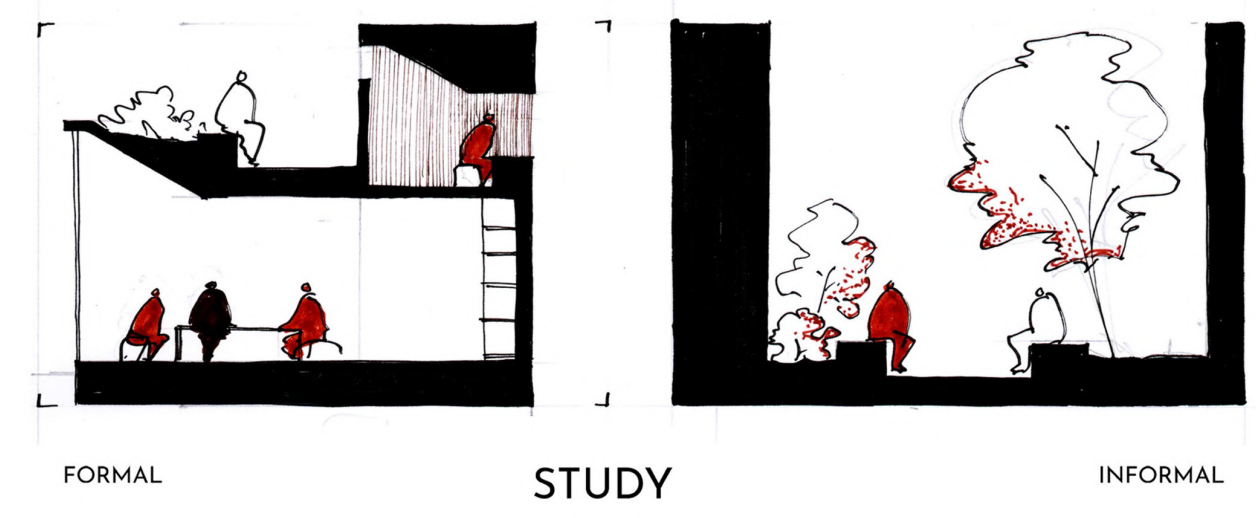
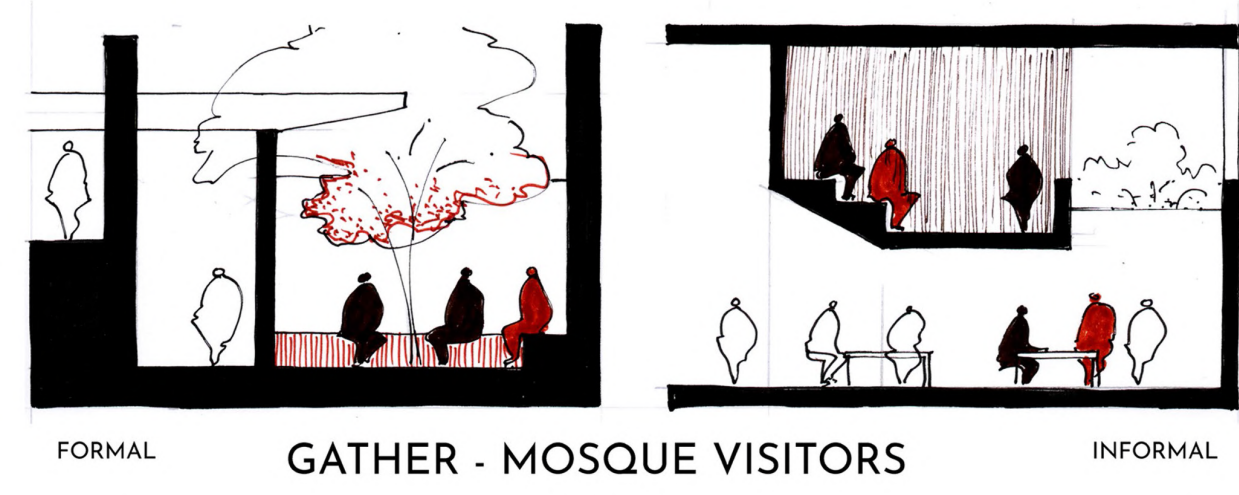
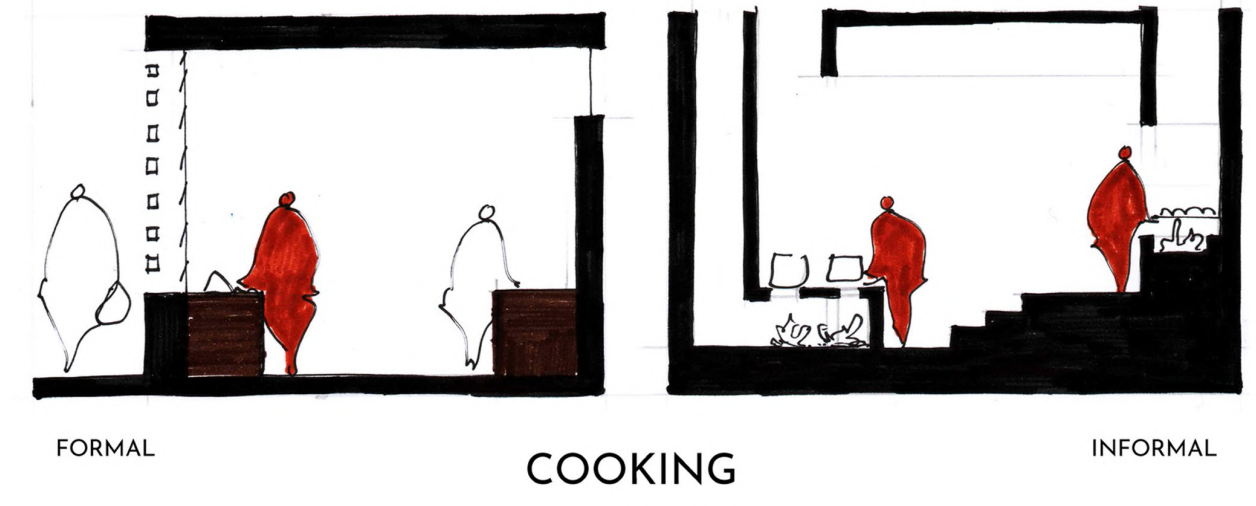
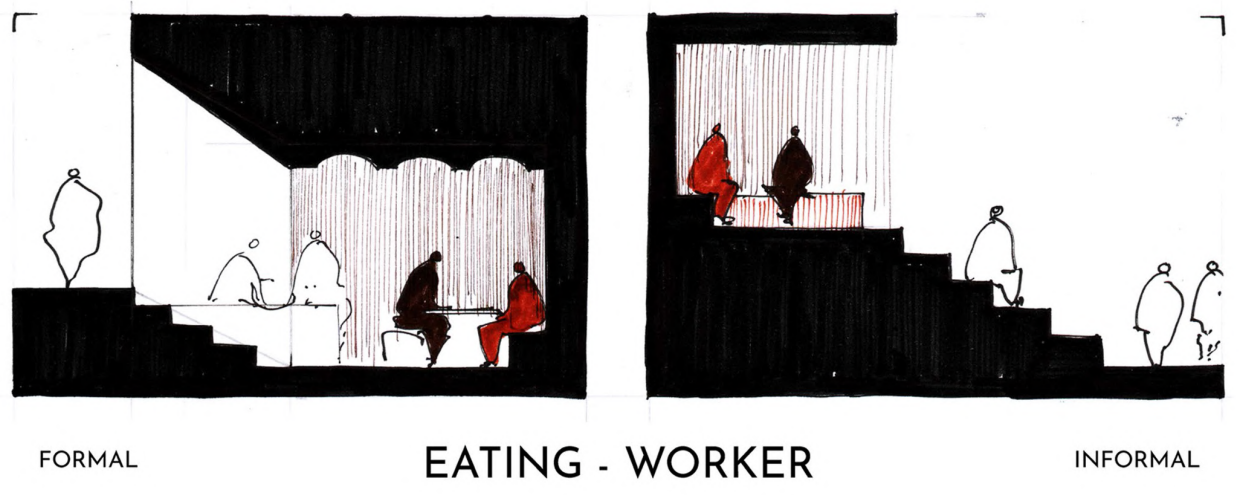
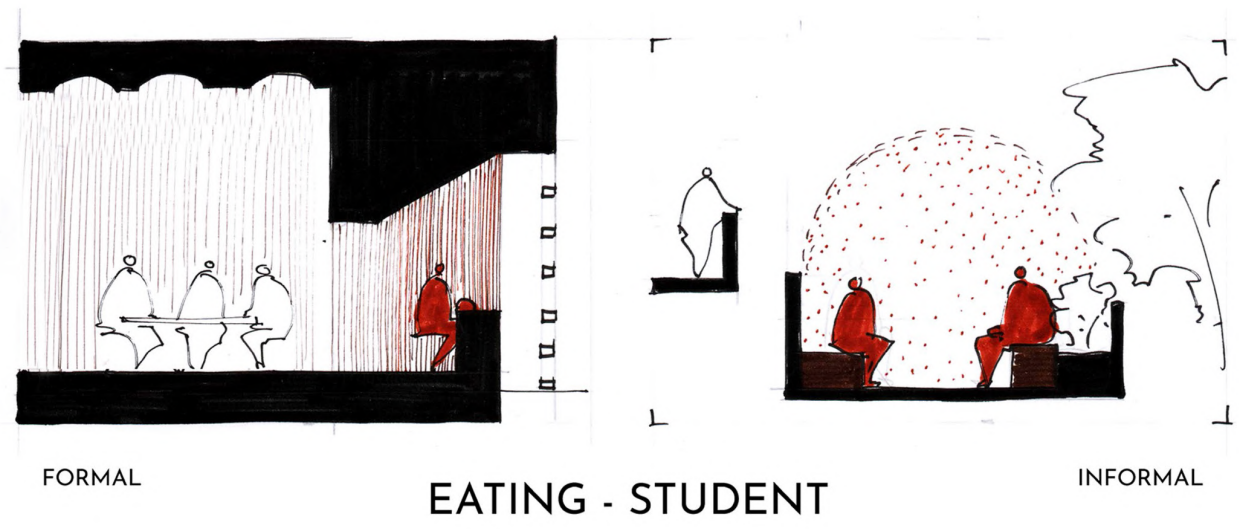
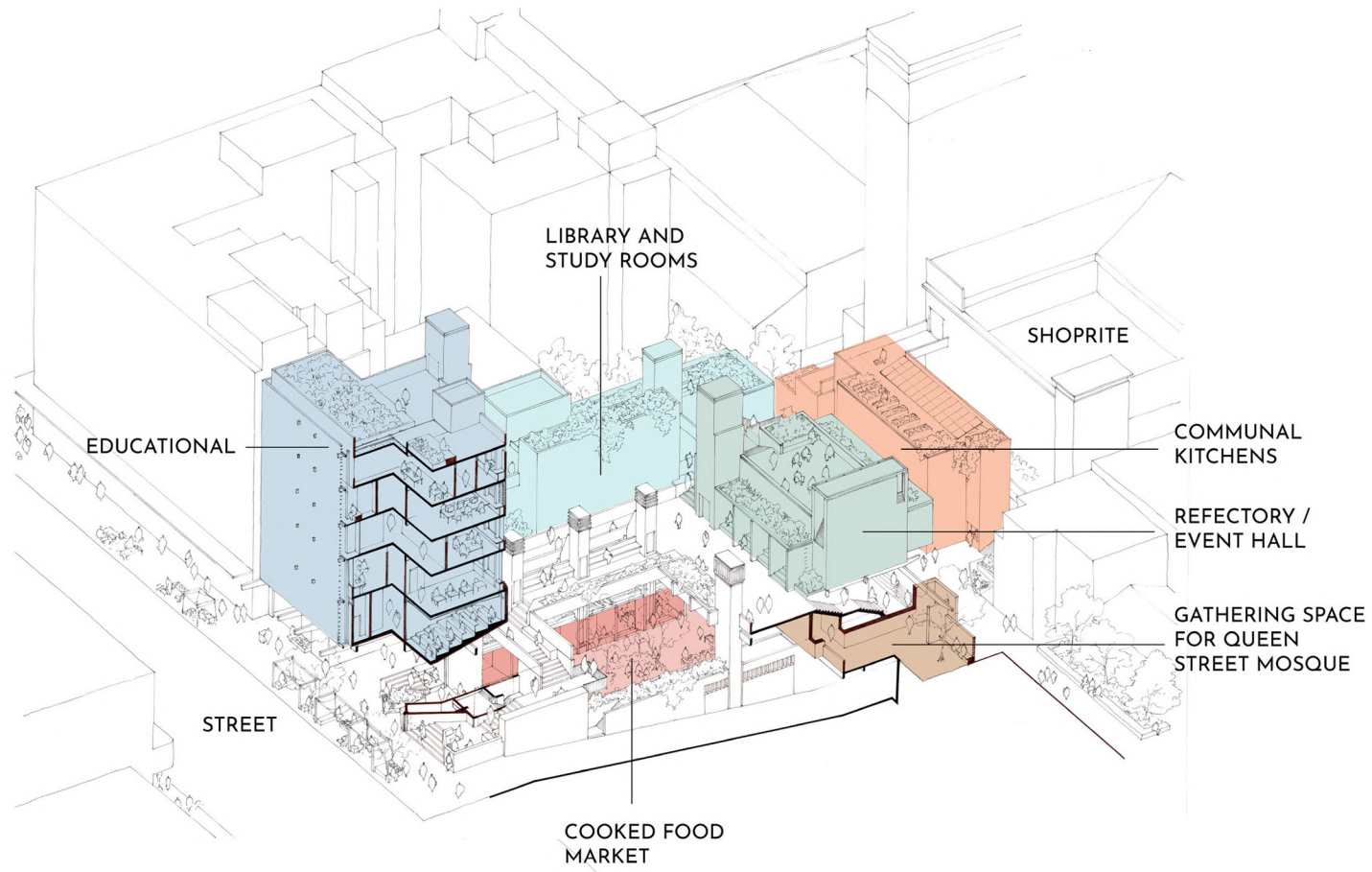
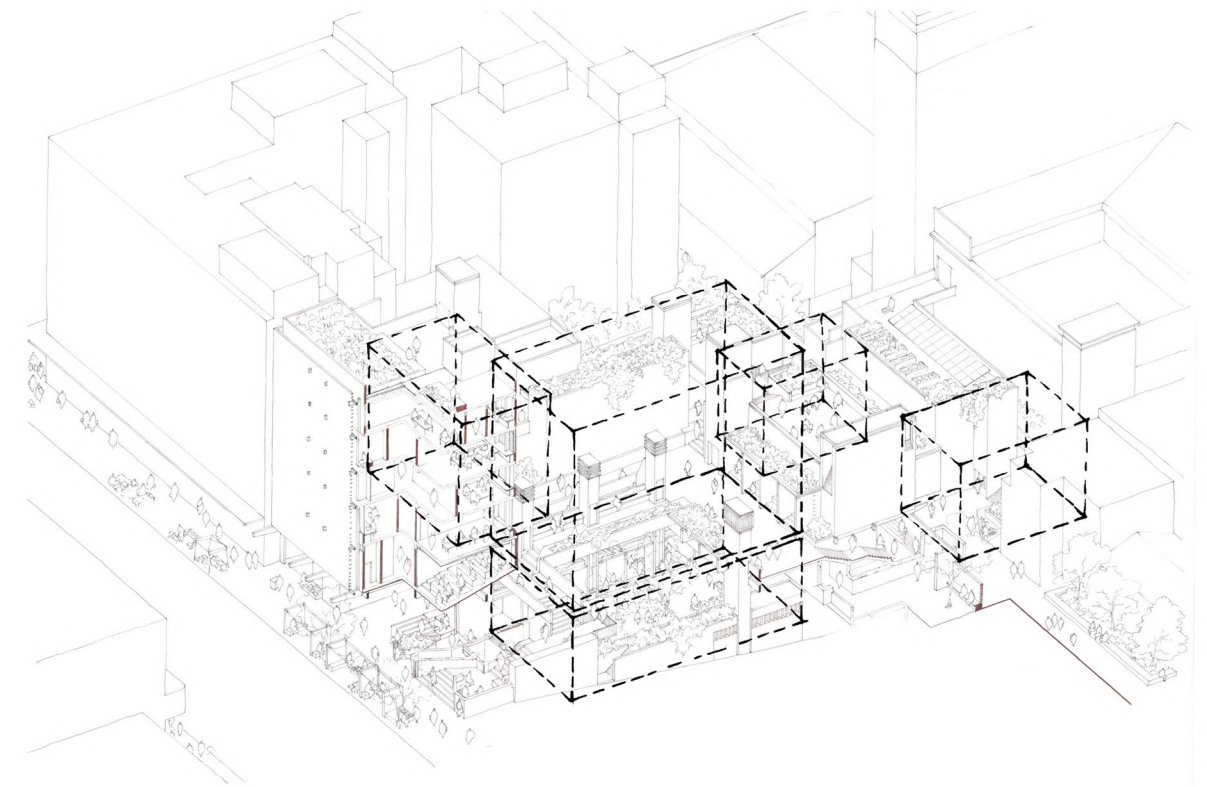


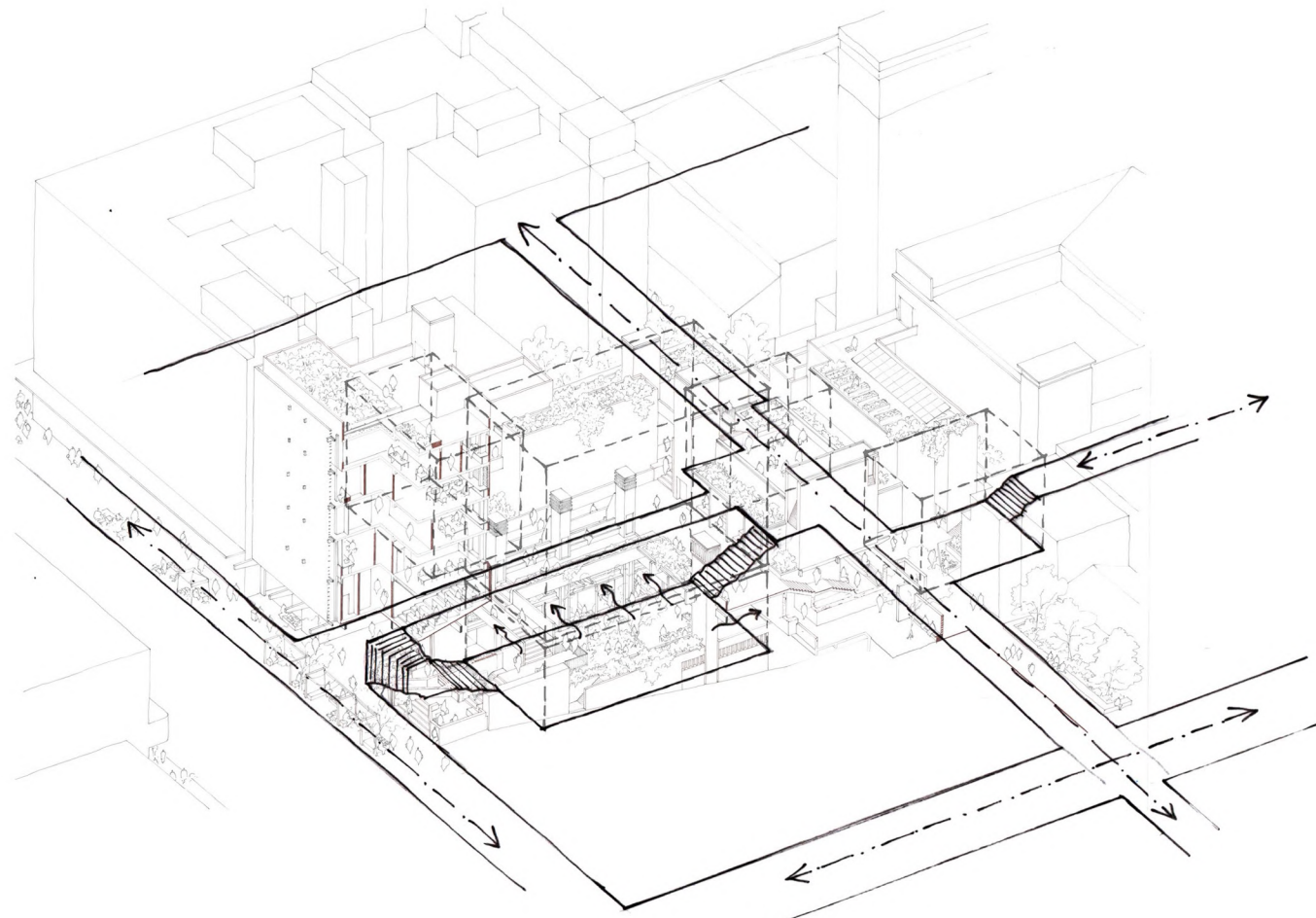
Fig. 100: Acts of refuge (Author 2021)



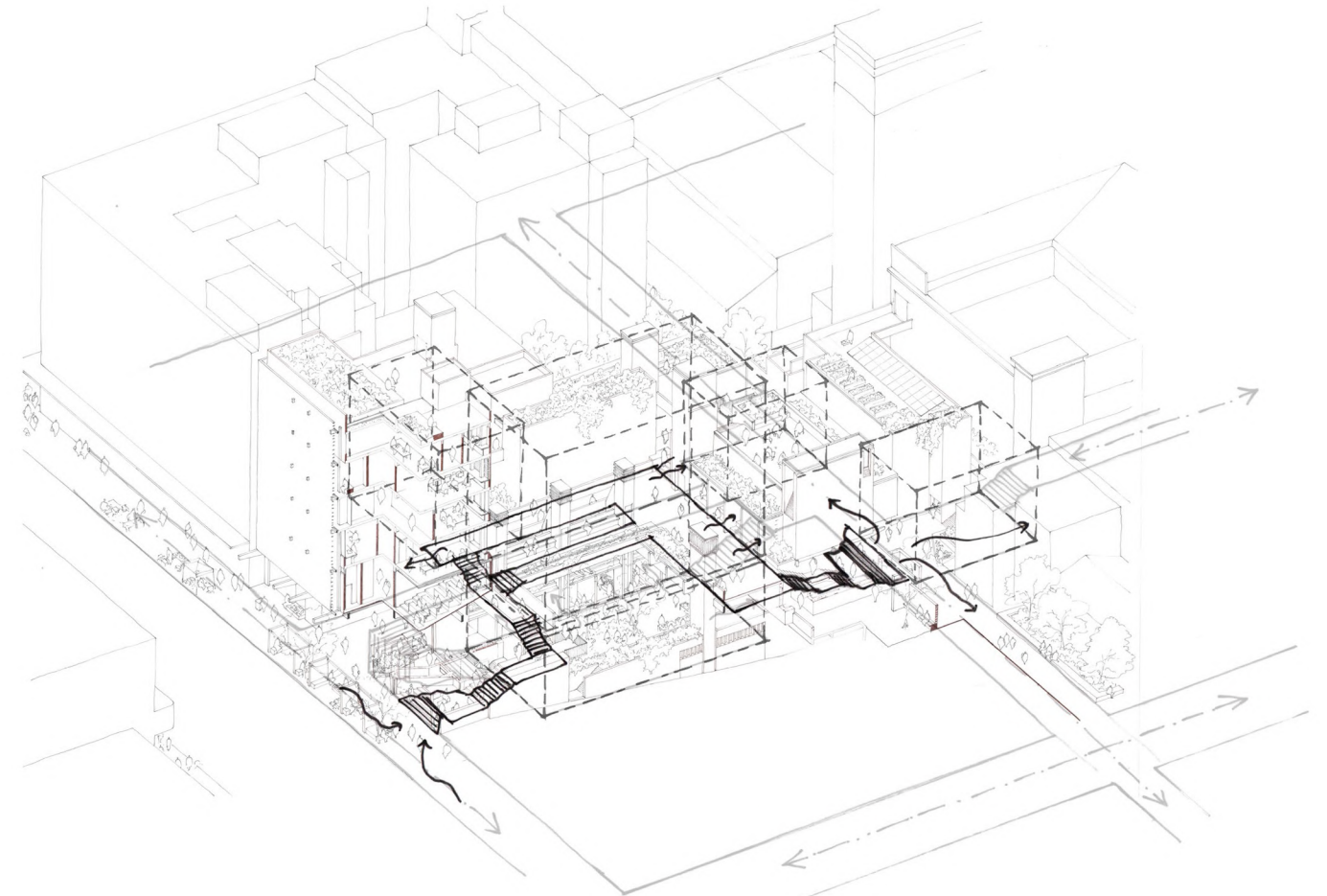
PROGRAMME



COURTYARDS

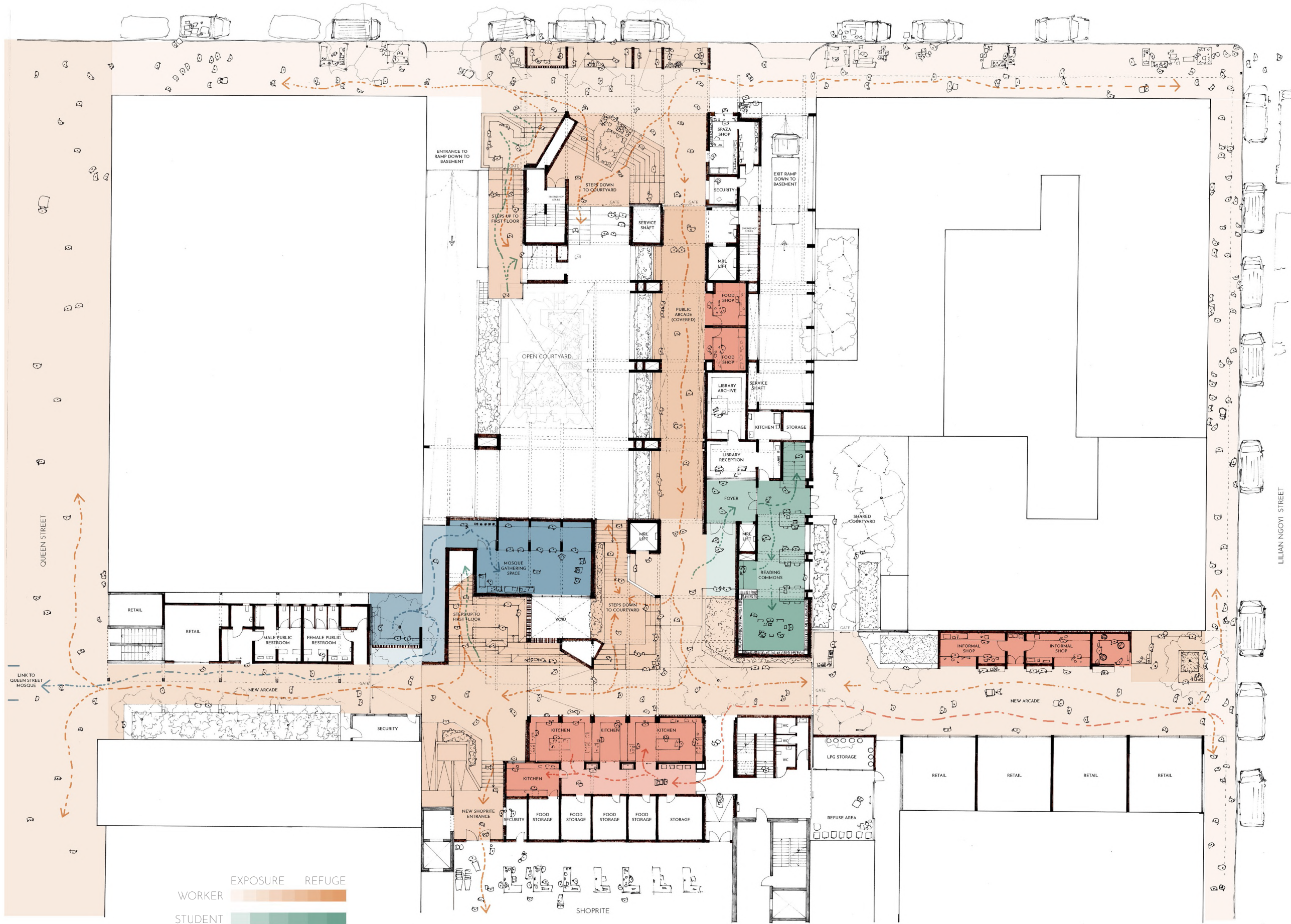


ARCADES



EXTENTION OF STREET SURFACE

Fig. 101: Final design diagrammes (Author 2021)
© University of Pretoria



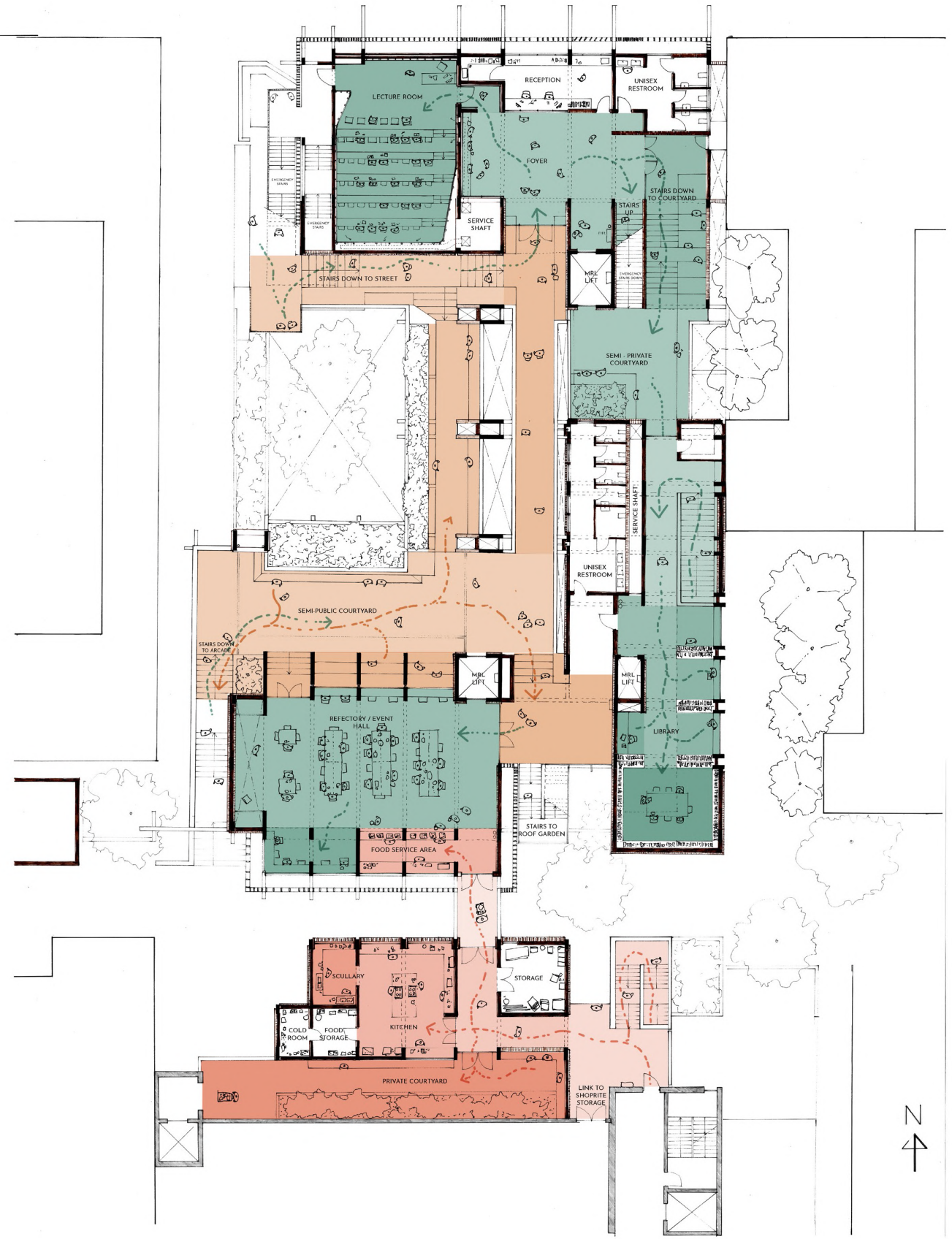
	EXPOSURE	REFUGE
WORKER	[Orange gradient]	[Light orange]
STUDENT	[Green gradient]	[Light green]
FOOD TRADER	[Red gradient]	[Light red]
MOSQUE VISITOR	[Blue gradient]	[Light blue]

GROUND FLOOR PLAN

Fig. 102: Sequential spatial progression of refuge - ground floor plan (Author 2021)



BASEMENT FLOOR PLAN



FIRST FLOOR PLAN

- | | EXPOSURE | REFUGE |
|----------------|----------|--------|
| WORKER | | |
| STUDENT | | |
| FOOD TRADER | | |
| MOSQUE VISITOR | | |

Fig. 103: Sequential spatial progression of refuge - basement floor plan (Author 2021)

Fig. 104: Sequential spatial progression of refuge - first floor plan (Author 2021)

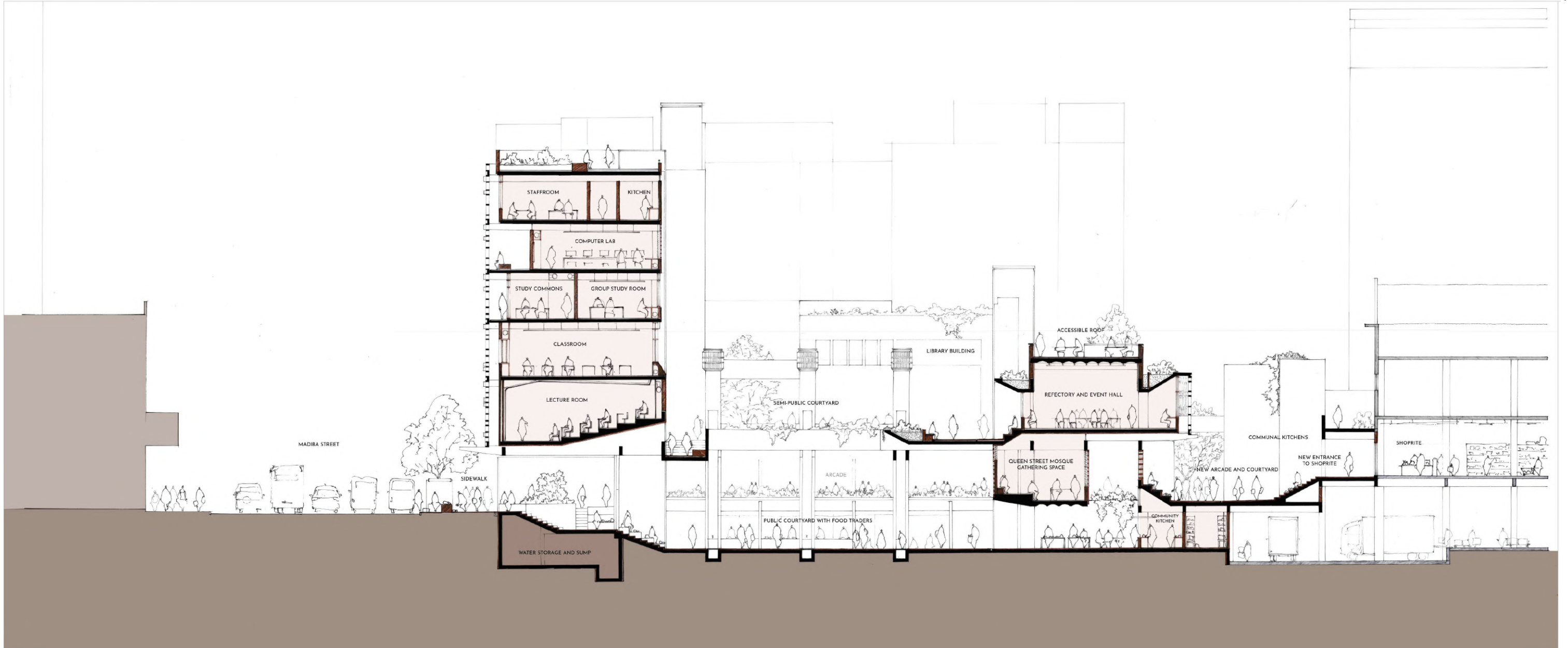
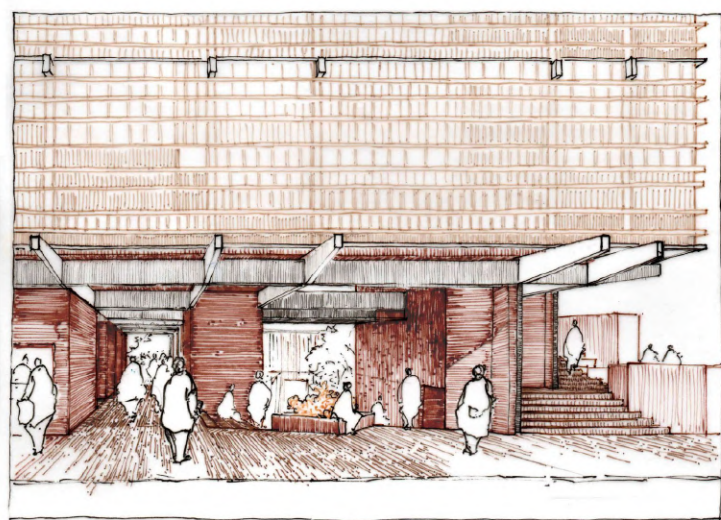


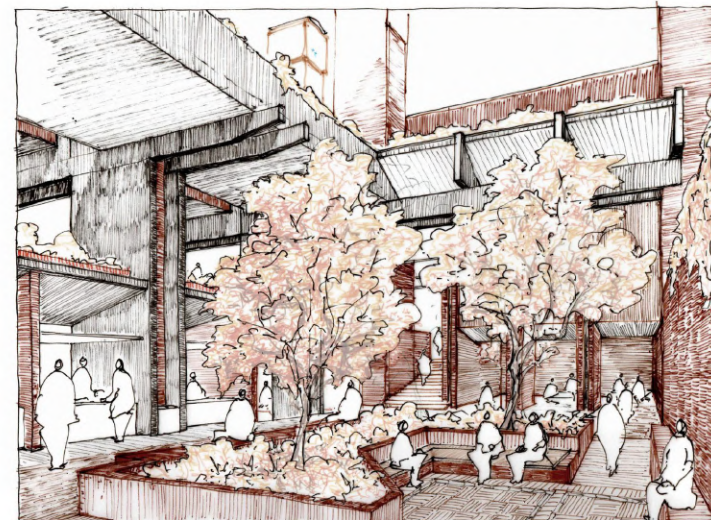
Fig. 105: 1:100 Longitudinal section (Author 2021)



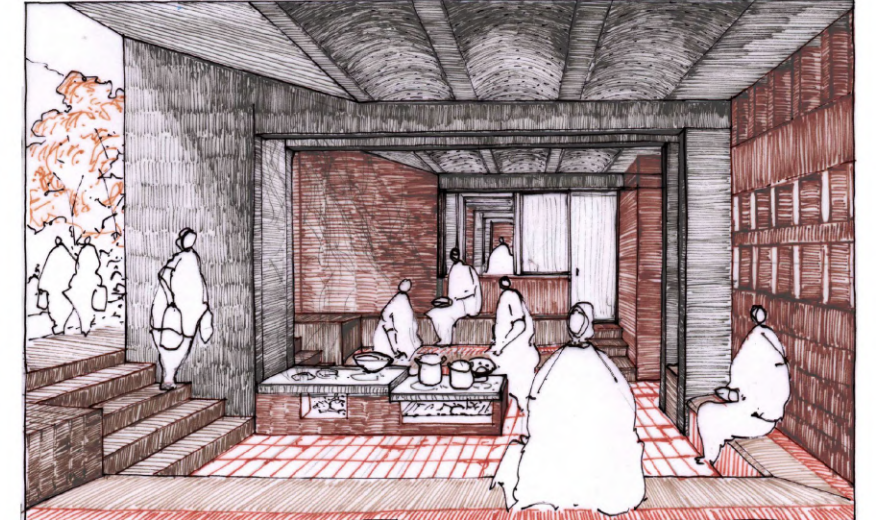
ENTRANCE



ARCANE - GROUND FLOOR



COURTYARD - BASEMENT



COOKING / EATING - BASEMENT

Fig. 106: Perspective drawings (Author 2021)

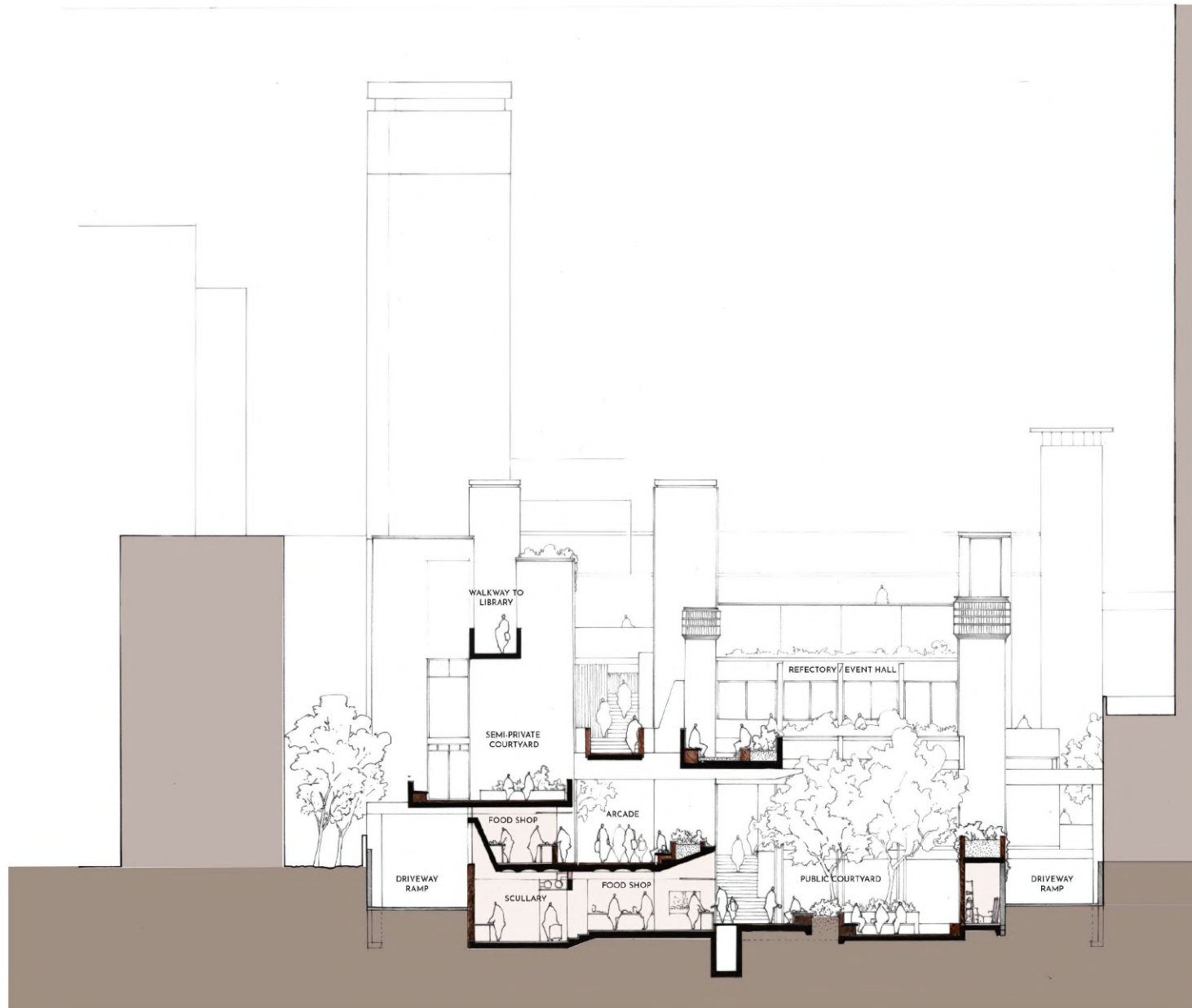


Fig. 107: 1:100 Cross section through courtyards (Author 2021)

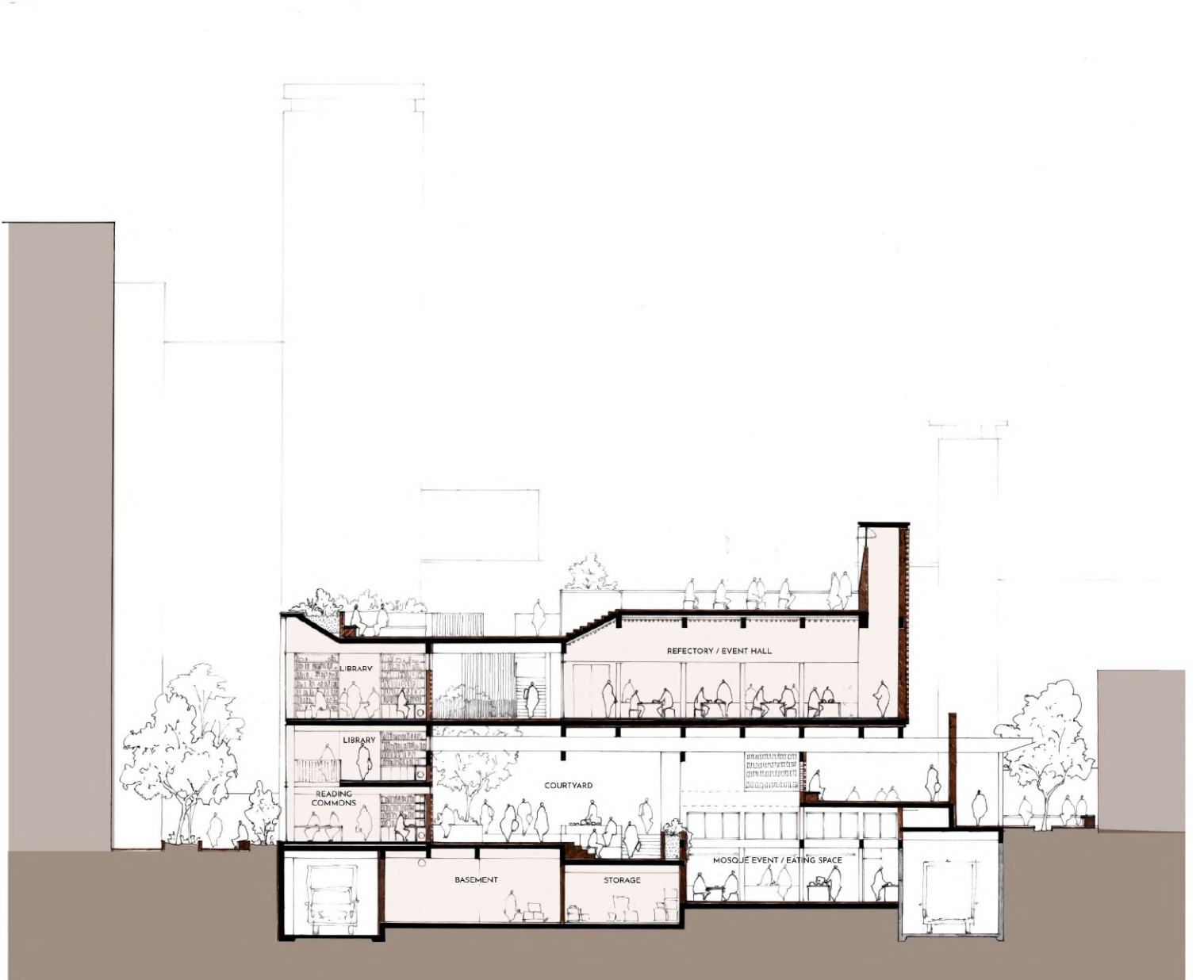
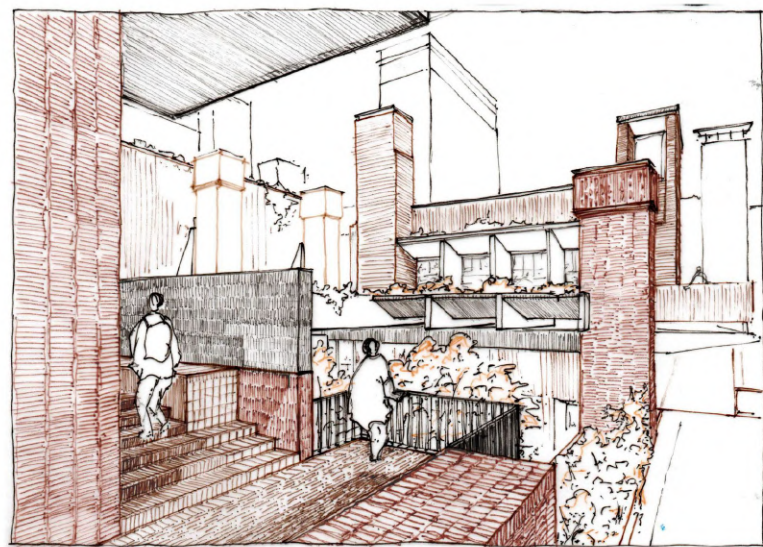


Fig. 108: 1:100 Cross section through library and refectory (Author 2021)



STAIRS UP TO FIRST FLOOR FROM STREET



TOWARDS EDUCATION BUILDING ENTRANCE



LIBRARY

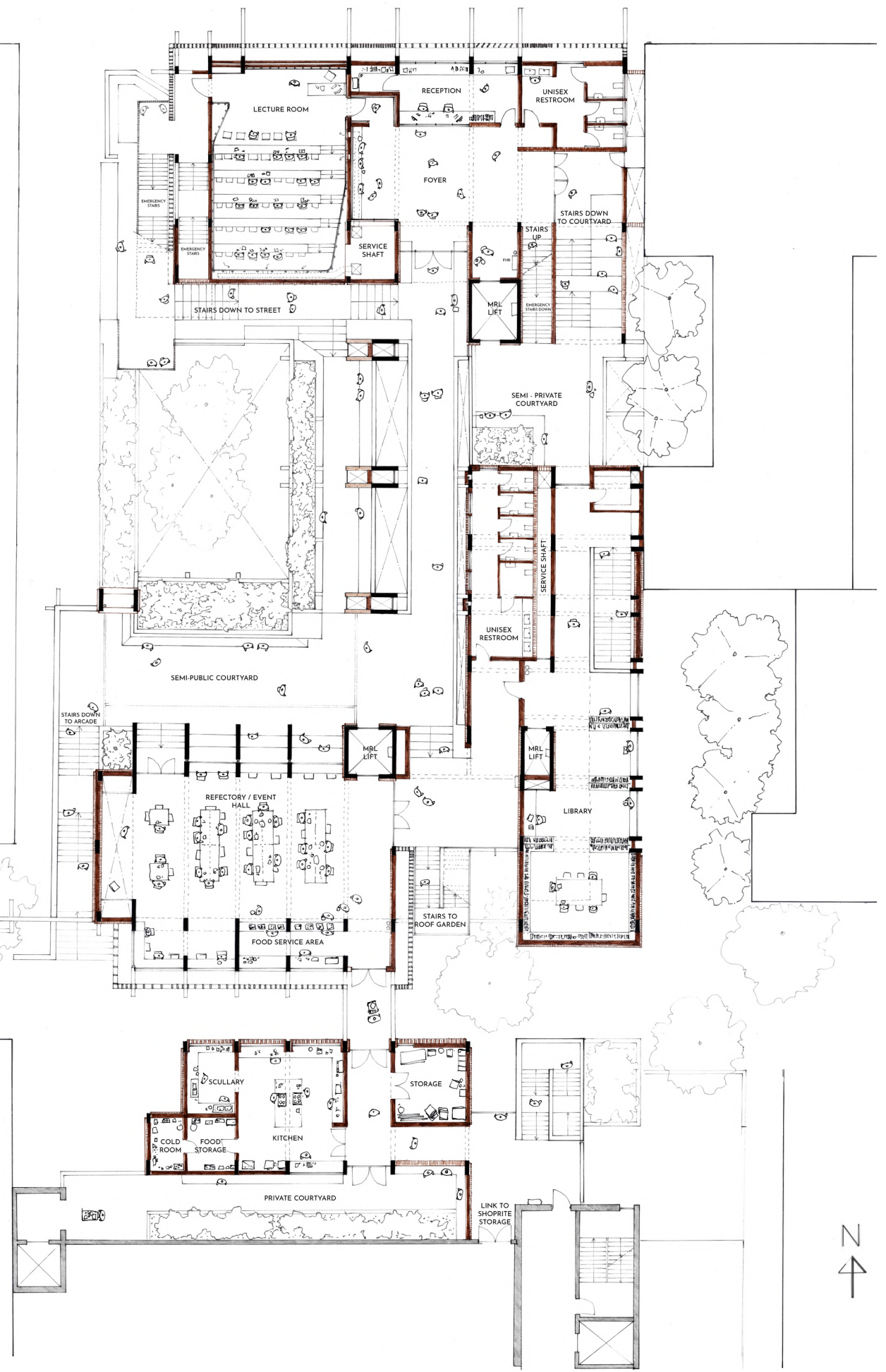
Fig. 109: Perspective drawings (Author 2021)



1:100 GROUND FLOOR PLAN
© University of Pretoria



1:100 BASEMENT FLOOR PLAN



1:100 FIRST FLOOR PLAN





Fig. 110: Model photo from north-east (Author 2021)

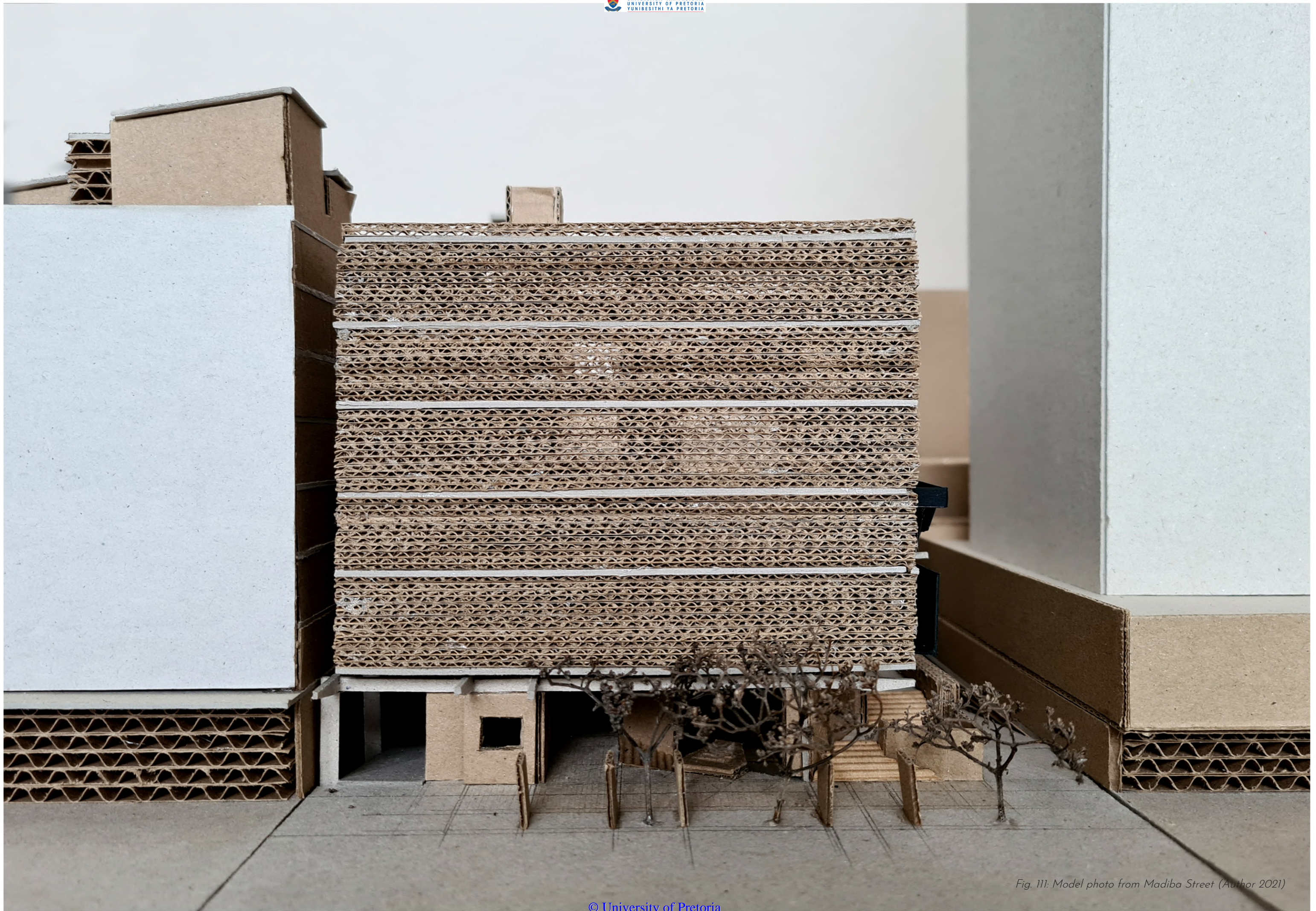


Fig. 111: Model photo from Madiba Street (Author 2021)



Fig. 112: Model photo from north-west (Author 2021)



Fig. 113: Model photos (Author 2021)