

**Supplementary material: Evaluating the morphological and molecular challenges in identifying the Afrotropical *Atylotus* species (Diptera: Tabanidae)**

Table S1: *Atylotus* COI sequences from GenBank and BOLD used in the BI and ML analysis.

<b>Epithet</b>	<b>GenBank</b>	<b>BOLD</b>	<b>Country: Province</b>	<b>Zoogeography</b>
<b>agrestis</b>	MT231189	GBMNC8961-20	Mozambique	Afrotropical
<b>agrestis</b>	MT231183	GBMNC8963-20	Mozambique	Afrotropical
<b>agrestis</b>	MT231182	GBMNC8964-20	Mozambique	Afrotropical
<b>agrestis</b>	MT231181	GBMNC8965-20	Mozambique	Afrotropical
<b>agrestis</b>	MT231180	GBMNC8966-20	Mozambique	Afrotropical
<b>agrestis</b>	MT231179	GBMNC8967-20	Mozambique	Afrotropical
<b>agrestis</b>	MT231162	GBMNC8968-20	Mozambique	Afrotropical
<b>agrestis</b>	MT231160	GBMNC8969-20	Mozambique	Afrotropical
<b>agrestis</b>	KY555746	GBDP25178-19	Zambia	Afrotropical
<b>agrestis</b>	KY555748	GBDP25180-19	South Africa	Afrotropical
<b>agrestis</b>	MT231159	GBMNC8970-20	Mozambique	Afrotropical
<b>agrestis</b>	MW243943	GBMND40253-21	Saudi Arabia	Afrotropical/Palaearctic
<b>agrestis</b>	MG587915	GBDP27106-19	Bangladesh	Oriental
<b>agrestis</b>	KM111665	GBDP16692-15	India	Oriental
<b>agrestis</b>		GMBCE2141-15	Bangladesh	Oriental
<b>agrestis</b>		GMBCD3145-15	Bangladesh	Oriental
<b>agrestis</b>	KY555747	GBDP25179-19	Zambia	Afrotropical
<b>agrestis</b>	MT231184	GBMNC8962-20	Mozambique	Afrotropical
<b>calcar</b>	KM285423	MHTAB098-09	Canada	Nearctic
<b>cryptotaxis</b>	MG426043	GBDP27107-19	Thailand	Oriental
<b>diurnus</b>	KX946507	KDIPT2474-13	Kenya	Afrotropical
<b>diurnus</b>	KX946506	KDIPT2475-13	Kenya	Afrotropical
<b>diurnus</b>	KY555745	GBDP25177-19	Zambia	Afrotropical
<b>diurnus</b>	KY555749	GBDP25181-19	Zambia	Afrotropical
<b>diurnus</b>	KY555750	GBDP25182-19	Zambia	Afrotropical
<b>diurnus</b>	KX946508	KDIPT2484-13	Kenya	Afrotropical
<b>fulvus</b>		FIDIP892-12	Finland	Palaearctic
<b>fulvus</b>		FIDIP2953-12	Finland	Palaearctic
<b>fuscipes</b>	MW013786	GBMNC490-20	Senegal	Afrotropical
<b>fuscipes</b>	MW013785	GBMNC491-20	Senegal	Afrotropical
<b>fuscipes</b>	MW013784	GBMNC492-20	Senegal	Afrotropical
<b>fuscipes</b>	MW013783	GBMNC493-20	Senegal	Afrotropical
<b>gilvellus</b>	MG426044	GBDP27108-19	Thailand	Oriental
<b>horvathi</b>	KF966580		Korea	Palaearctic
<b>insuetus</b>	JF869006	BBDCP644-10	Canada	Nearctic

<b>insuetus</b>	JF869012	BBDCP650-10	Canada	Nearctic
<b>insuetus</b>	MF832957	SSKUB204-15	Canada	Nearctic
<b>insuetus</b>	MF835595	SSKUB5074-15	Canada	Nearctic
<b>insuetus</b>		GBIOB2054-19	Canada	Nearctic
<b>loewianus</b>		GMBUF011-14	Bulgaria	Paleartic
<b>lotus</b>	MG426045	GBDP27109-19	Thailand	Oriental
<b>miser</b>	NC30000	GBDP27110-19	China	Paleartic
<b>miser</b>	KT225291	GBMNA9863-19	China	Paleartic
<b>nigromaculatus</b>	MW337211	GBMND40254-21	Saudi Arabia	Afro/Pal
<b>nigromaculatus</b>	KX946515	KDIPT2451-13	Tanzania	Afrotropical
<b>nigromaculatus</b>	KX946513	KDIPT2452-13	Tanzania	Afrotropical
<b>nigromaculatus</b>	KX946509	KDIPT2457-13	Tanzania	Afrotropical
<b>nigromaculatus</b>	KX946514	KDIPT2463-13	Kenya	Afrotropical
<b>nigromaculatus</b>	KX946512	KDIPT2465-13	Kenya	Afrotropical
<b>nigromaculatus</b>	KX946510	KDIPT2487-13	Tanzania	Afrotropical
<b>nigromaculatus</b>	KX946511	KDIPT2488-13	Tanzania	Afrotropical
<b>plebeius</b>		FIDIP2955-12	Finland	Paleartic
<b>sublunaticornis</b>	MG168140	SSBCA3555-15	Canada	Nearctic
<b>sublunaticornis</b>	MG169183	SSBCA3556-15	Canada	Nearctic
<b>sublunaticornis</b>	KR669647	JWDCJ757-11	Canada	Nearctic
<b>sublunaticornis</b>	KR659602	JWDCJ758-11	Canada	Nearctic
<b>sublunaticornis</b>		FIDIP2957-12	Finland	Paleartic
<b>sublunaticornis</b>	MG168807	SSBCA6007-15	Canada	Nearctic
<b>sublunaticornis</b>	KR655213	JWDCJ759-11	Canada	Nearctic
<b>sublunaticornis</b>		FIDIP2956-12	Finland	Paleartic
<b>thoracius</b>	MF830268	SSKJC046-14	Canada	Nearctic
<b>thoracius</b>	KR980762	SSKJC2165-15	Canada	Nearctic
<b>thoracius</b>	MF828652	SSKJC2192-15	Canada	Nearctic
<b>undetermined</b>	KR441648	BBDEC313-09	Canada	Nearctic
<b>undetermined</b>	HM435717	BBDEC099-09	Canada	Nearctic
<b>undetermined</b>	KR441344	BBDEC312-09	Canada	Nearctic
<b>undetermined</b>	JF875816	JWDCG136-10	Canada	Nearctic
<b>undetermined</b>		GMESJ1110-14	Egypt	Afrotropical
<b>undetermined</b>		GMESA181-14	Egypt	Afrotropical
<b>undetermined</b>		KMPWN153-19	South Africa	Afrotropical
<b>undetermined</b>		KMPWS158-19	South Africa	Afrotropical
<b>undetermined</b>		KMPQS010-19	South Africa	Afrotropical
<b>undetermined</b>		KMPSP2601-19	South Africa	Afrotropical
<b>undetermined</b>		KMPDG116-19	South Africa	Afrotropical
<b>virgo</b>	MT188374	GBMNB25065-20	India	Oriental
<b>agrestis</b>	OL534387		South Africa	Afrotropical
<b>agrestis</b>	OL534388		South Africa	Afrotropical
<b>agrestis</b>	OL534389		South Africa	Afrotropical

---

<b>agrestis</b>	OL534390	South Africa	Afrotropical
<b>longirostris</b>	KM243550	Unknown	

---

*Atylotus agrestis* (Wiedeman, 1828)

Specimen DVTD\_23 (Accession OL534387) identified by LP Snyman as *Atylotus agrestis* (Wiedeman, 1828). Specimen collected 06 – 07 March 2018 from the Lower Sabie region of Kruger National Park, Mpumalanga, South Africa (Lat. -25.177872°; Lon. 31.975624°). Specimen trapped using a horizontal trap baited with 2 mL of octenol (Collectors. L.P. Snyman, A. Smit, X. Mazibuko)

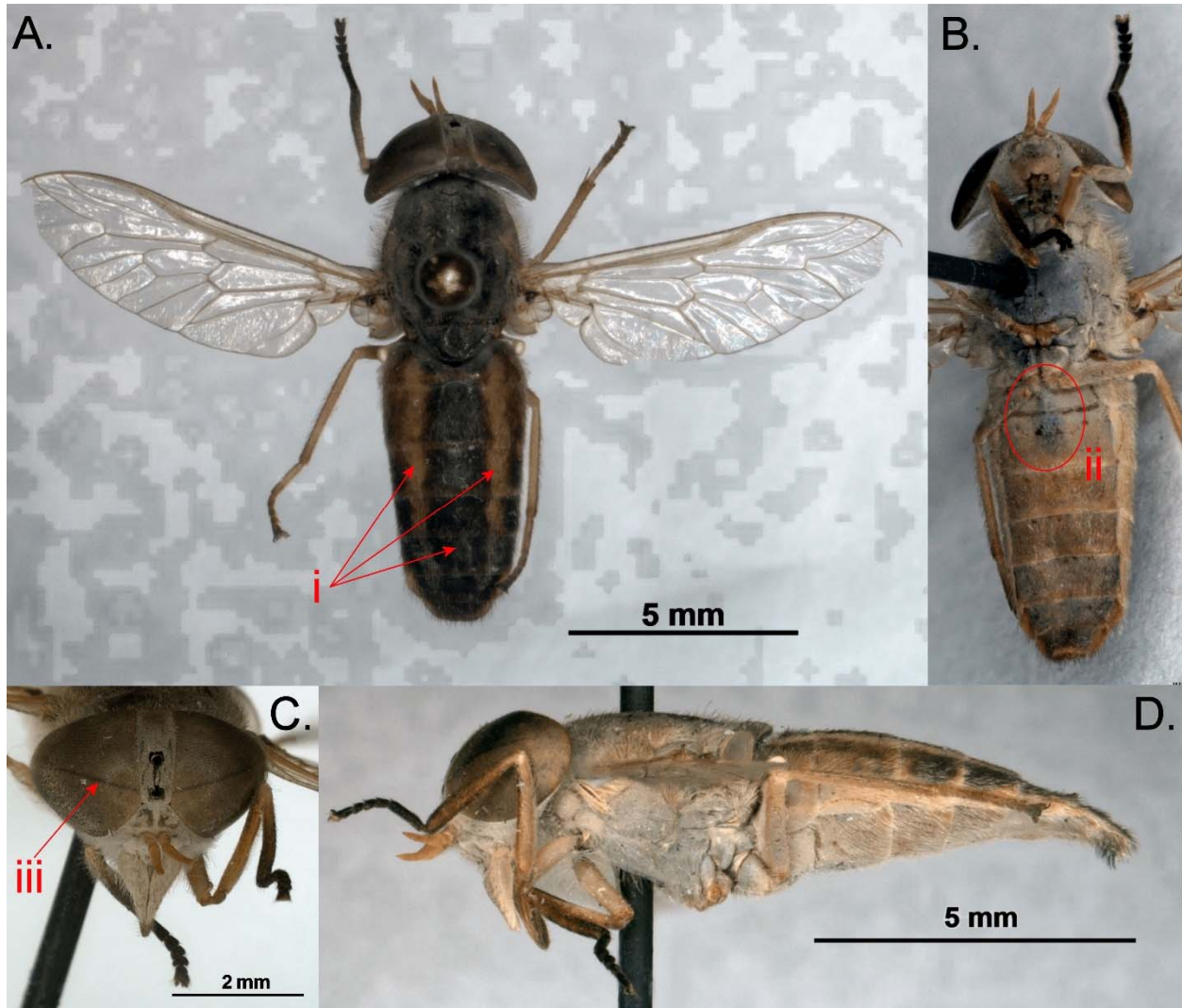


Figure SM1. *Atylotus agrestis* (Voucher DVTD\_23). A. dorsal view; B. ventral view; C. facial view; D. lateral view. i. arrows indicating two distinct sublateral lines and one faint median line; ii. Black/dark basomedial mark present; iii. Single narrow purple band present (fresh specimens).