

Supplementary material for

Pollution shapes the microbial communities in river water and sediments from the Olifants River catchment, South Africa

Angel Valverde, Errol D. Cason, Alba Gómez-Arias, Derya Bozkale, Danny Govender, Eddie Riddell, Don Cowan

This document contains figures:

Figure S1. Sampling information

Figure S2. Rarefaction curves, Chao1 and Good's coverage estimates

Supplementary files are available on line

Table S1. Chemistry of the samples. Concentrations are in mg/l (water) or mg/kg (sediments). LC, low contamination; MC, mid contamination; HC, high contamination

Table S2. Indicator families. LC, low contamination; MC, mid contamination; HC, high contamination. SE, sediments; WA, water.

Table S3. Indicator genera. LC, low contamination; MC, mid contamination; HC, high contamination. SE, sediments; WA, water.

Table S4. Indicator functions. LC, low contamination; MC, mid contamination; HC, high contamination. SE, sediments; WA, water.

Fig. S1

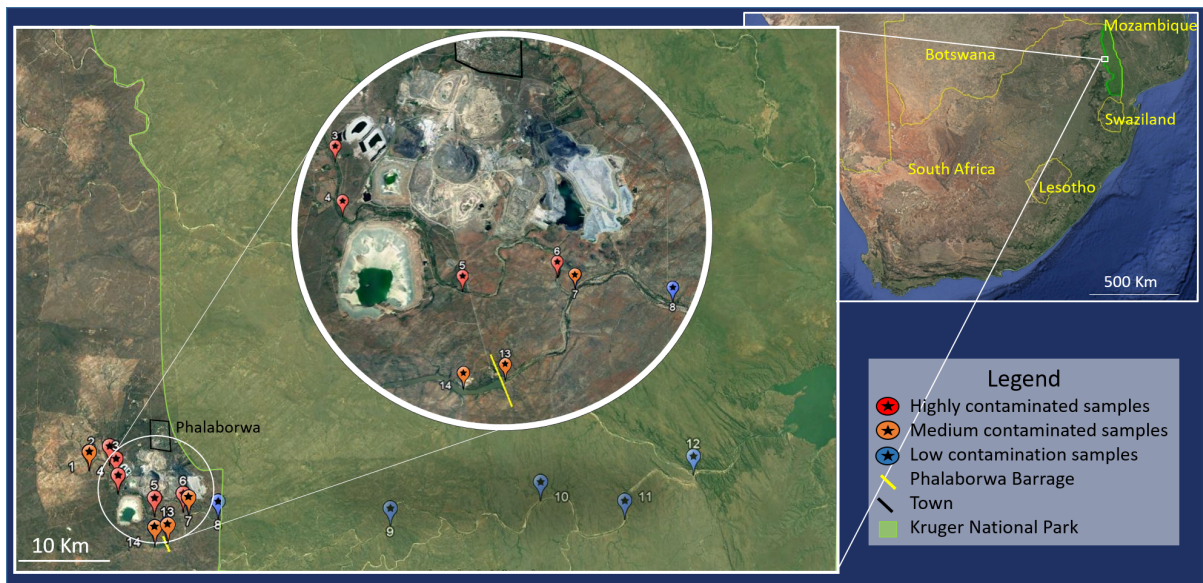


Fig. S2

