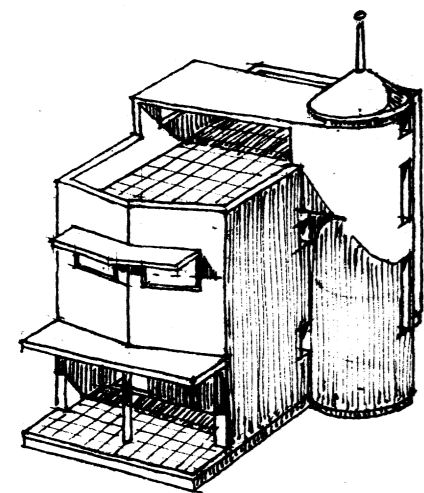


PROPOSED TYPE FOUR-ROOMED HOUSE TO BE BUILT AT NIGEL

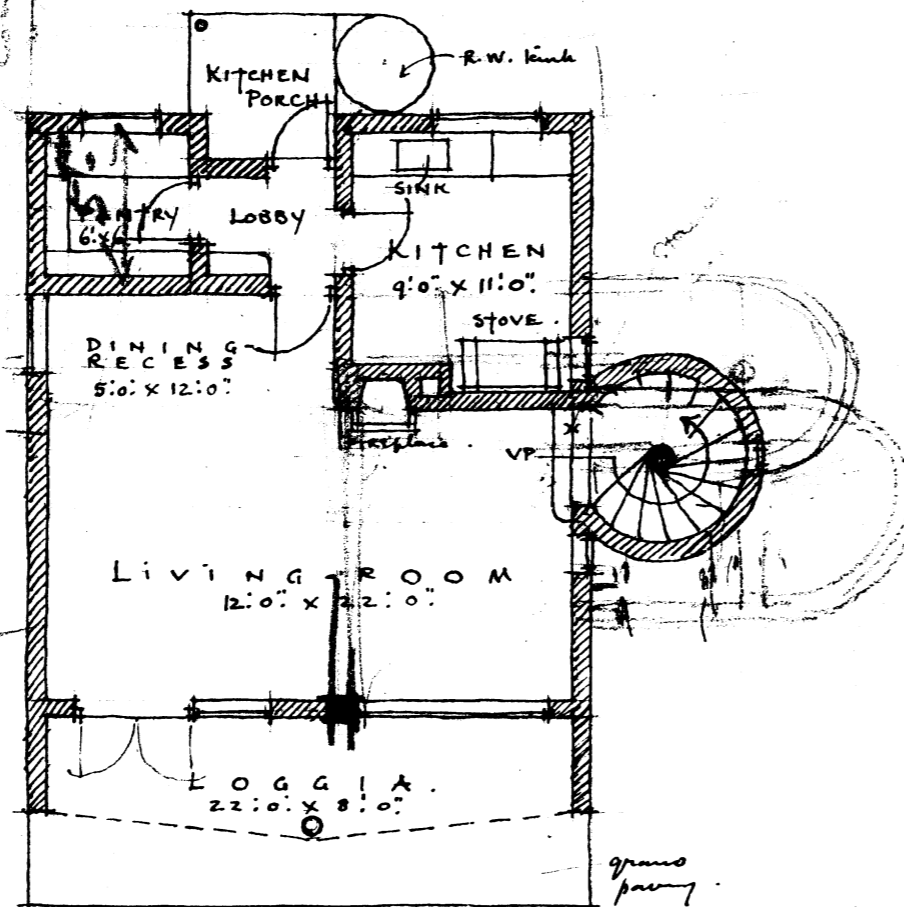
for GUBSARDO.

1/8TH SCALE SKETCH PLAN.

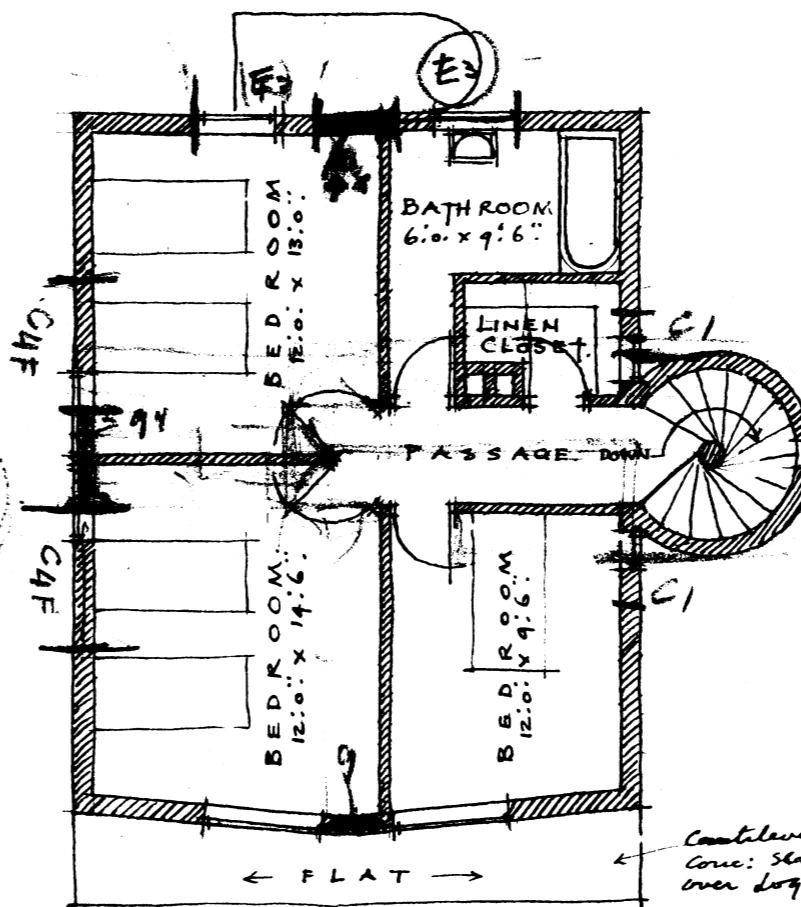
DWG No. 164N
6:9:34.



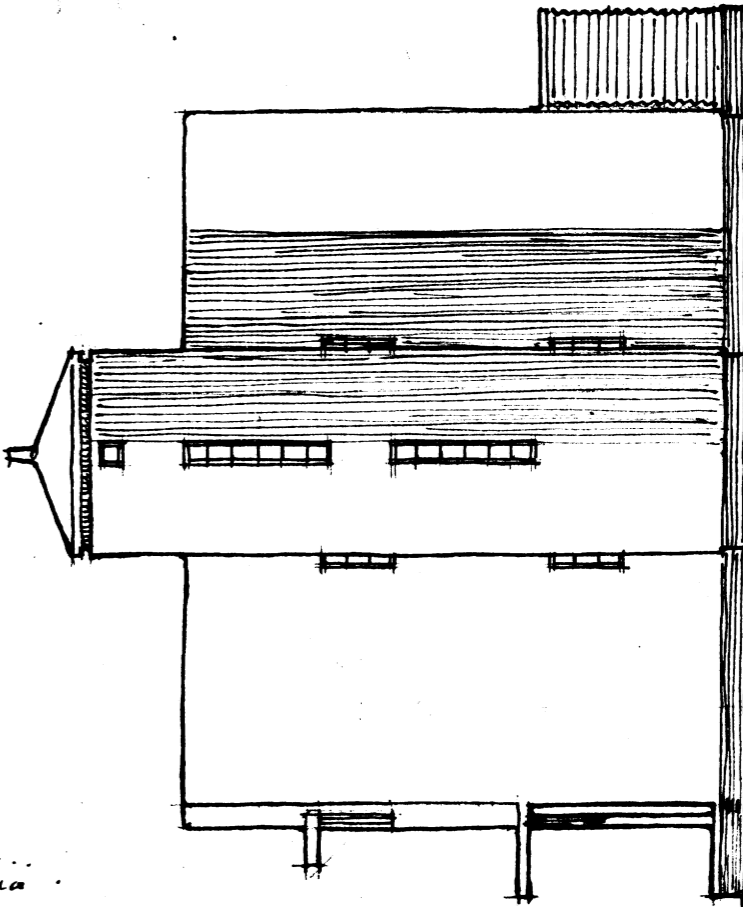
PERSPECTIVE VIEW.
(from North-west)



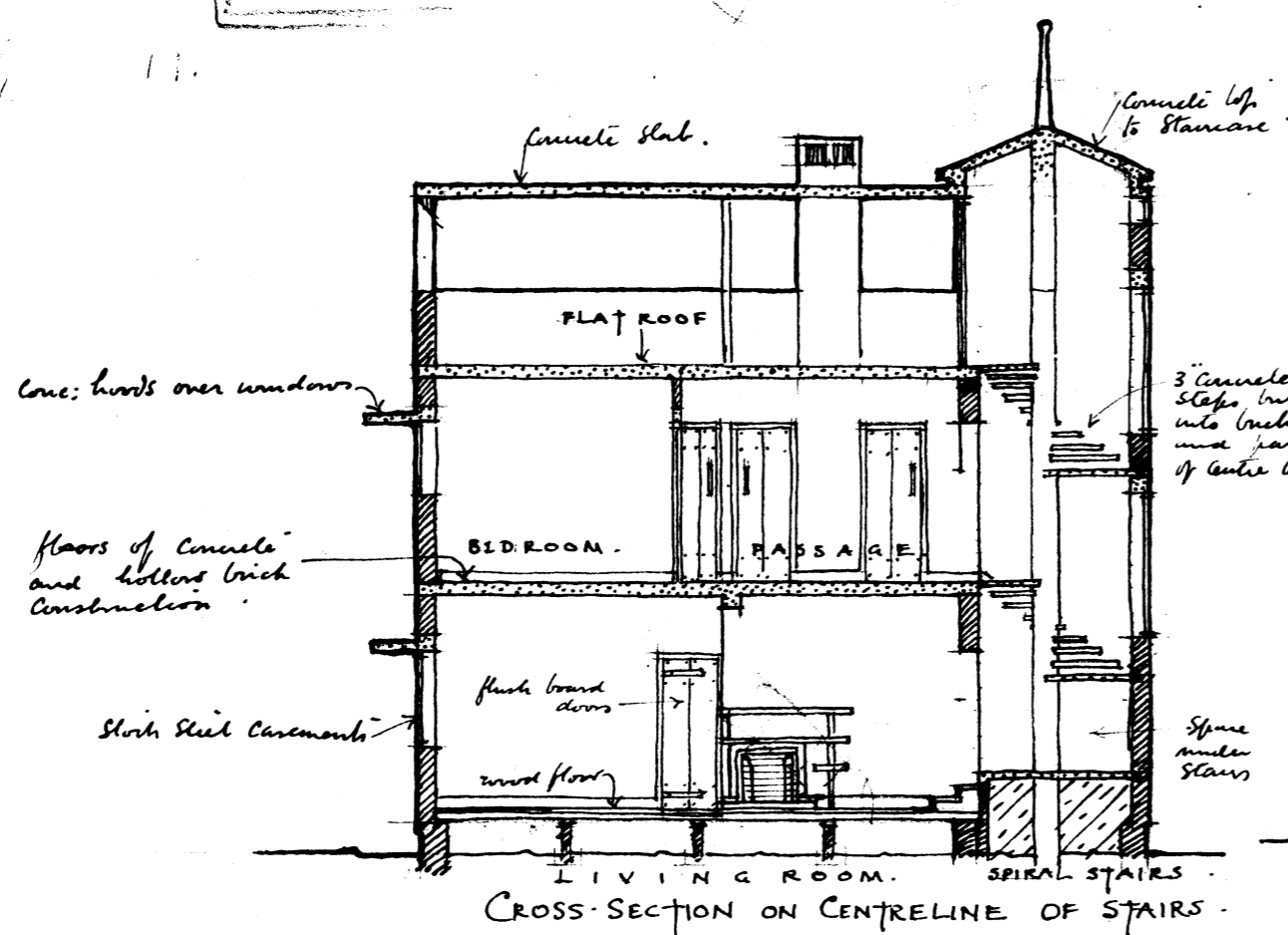
GROUND PLAN.



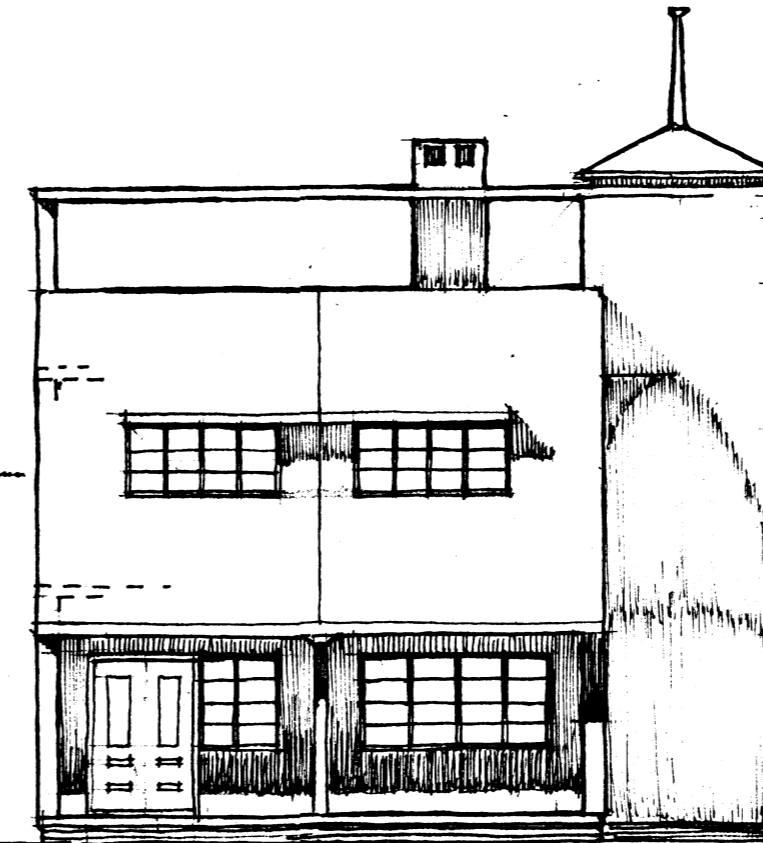
FIRST FLOOR PLAN.



WEST ELEVATION.



CROSS-SECTION ON CENTRELINE OF STAIRS.



NORTH ELEVATION.

Conc. hood over windows

Floors of concrete and hollow brick construction

Slab steel casements

Concrete up to staircase

3 concrete slabs built into brick and part of centre column

Spiral stairs

2'6" x 0'6"

6'7"

Norman Eaton A.R.I.B.A.
CHARTERED ARCHITECT.
GRESHAM BUILDINGS
PRETORIA.

P. 42/2.