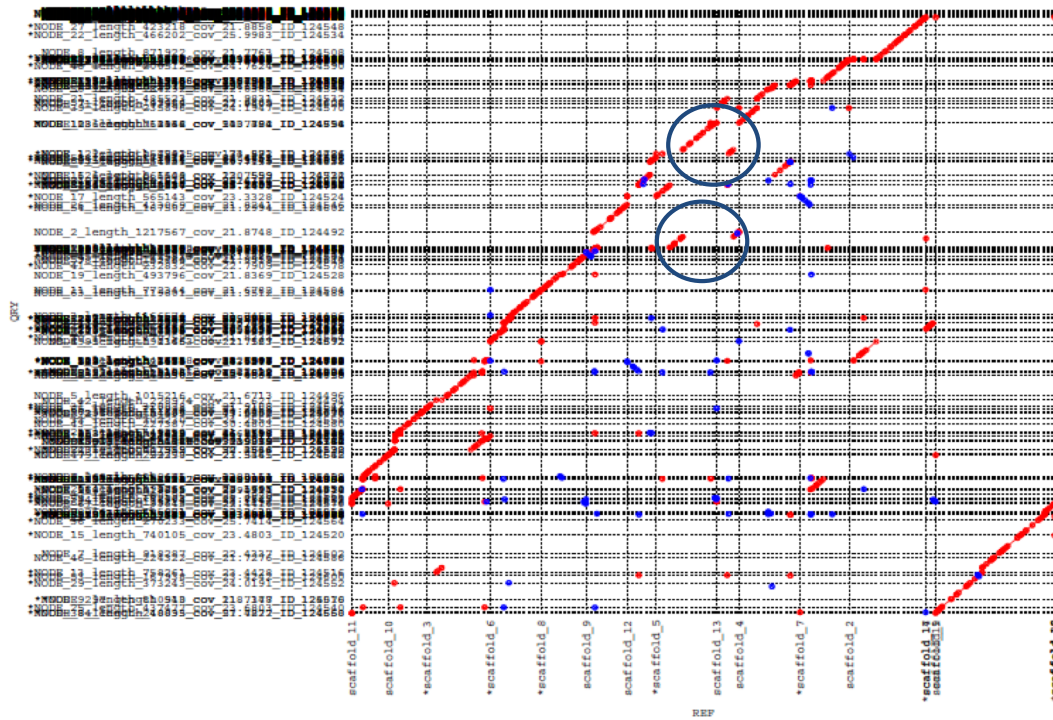


**Fig. S2**

Initial evidence for a 5:13 reciprocal chromosome translocation in the NZE10 genome.

**A**



**B**



A) Assembled contigs from the SLV genome were aligned with the reference chromosomes (scaffolds). Two of the contigs (circled) mapped to both chromosomes 5 and 13 of the NZE10 reference genome. This was found in many of the other genome sequences.

B) Visualisation of reads from the ALP3 genome mapped onto a region of chromosome 13 show a gap, in which mate-pairs are mapped to chromosome 5.