

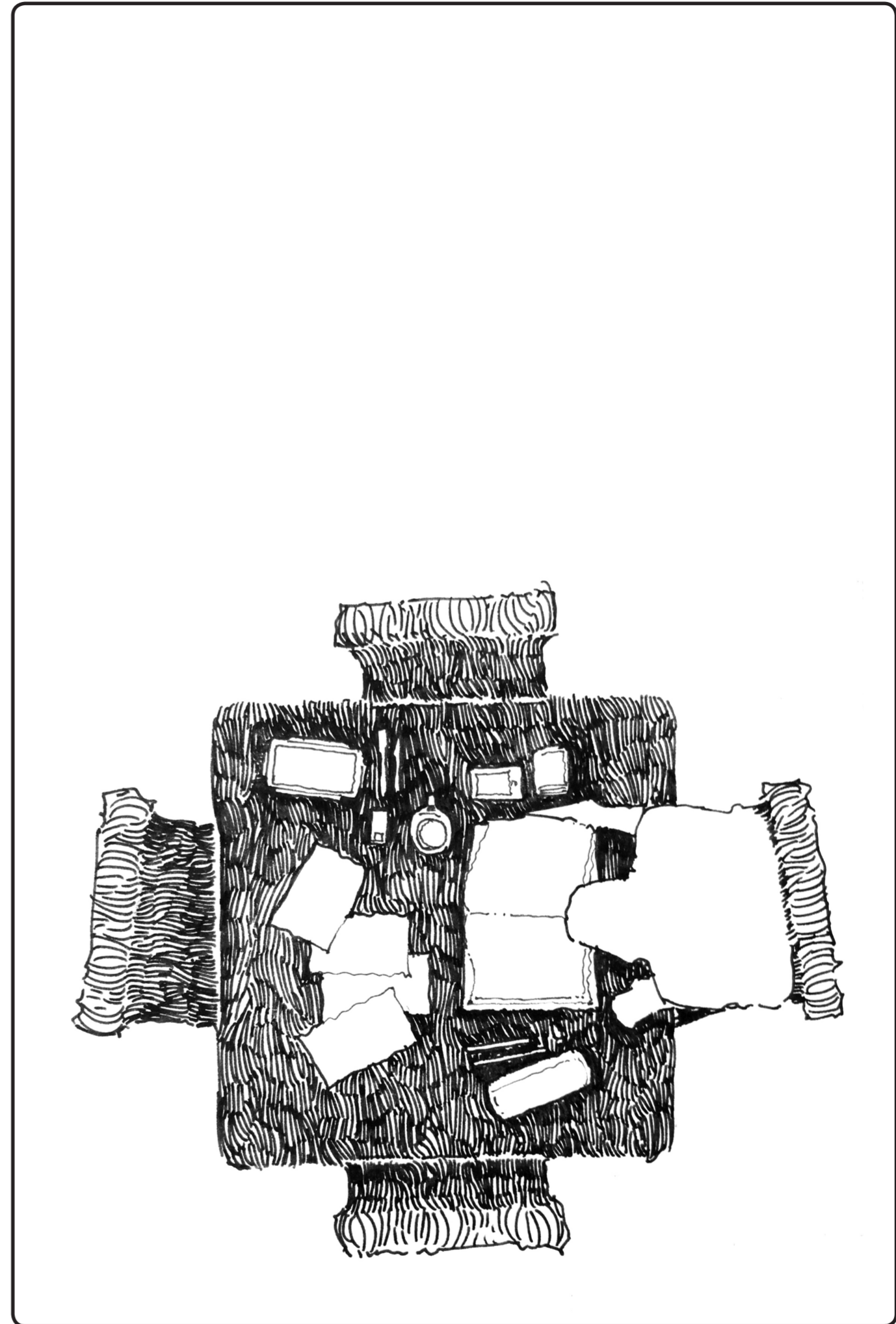


CHAPTER

08

AEDIFICIUM

Concluding remarks and final manifestation of the argument in the form of final models and drawings.





8.1

CONCLUSION

In an age where the progressive and the novel are fetishized and the fictional ideal of a man-made future utopia blinds us to the value of the historical or the existing, we attempt to reimagine our world without questioning whether something need be reimaged. The public library is a victim of a self-fulfilling prophecy that called for its reinvention in order to cope with a digital future and retain its relevance, this reinvention took the form of the library being renamed as the resource centre and the rapid proliferation of these counterfeit replacements made up of blended functions, technologies and amorphous, ill-defined spaces, have only acted to expand the placeless geographies that characterise our urban environments.

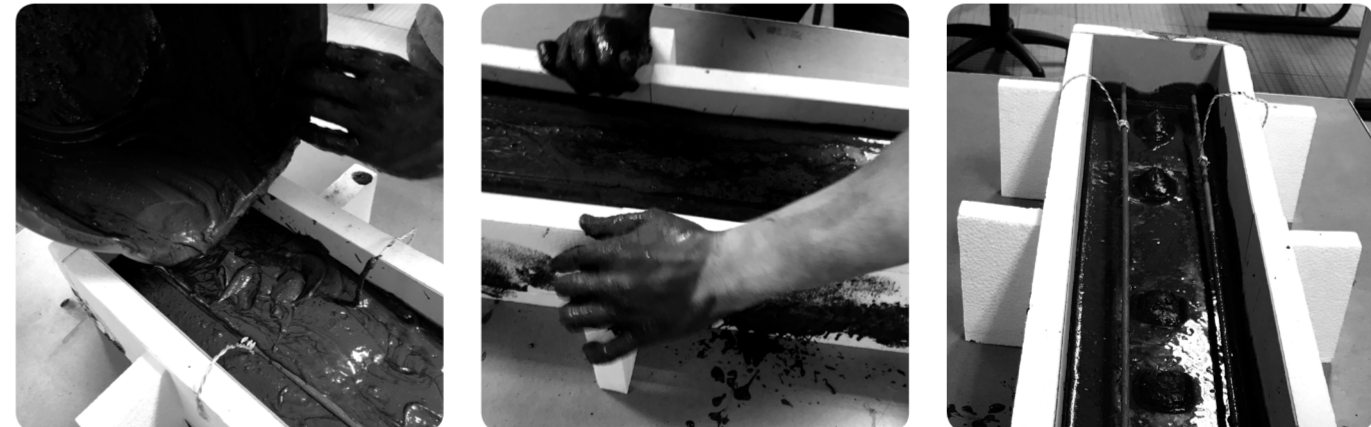
If new libraries are to be built as places of meaning and significance whilst critically engaging with the future of the type, then architects need to embrace the library's essential character as an enclosed, well defined and regulated semi-public space built to house physical codices and people whilst facilitating non-digital interactions. It is this typical library that has both value and a contemporary role, rather than existing as a placeless window into the bottomless riches of the digital world. It is an enclosed space of order, context and structure in contrast to the infinite chaos of the outside.

8.2

THE ARCHITECTURAL PRODUCT

Following these concluding remarks, the drawings and models that have been made to communicate the design of the library, act as the architectural manifestation of the argument. As the fruit of this investigation into the issue of institutional placelessness, the architecture presented here should be understood by the reader as the final chapter of this argument and as a means of critically assessing the relevance and potential of the approach to place-making proposed by this dissertation.

Figure 8.1 - Roof volume model making process



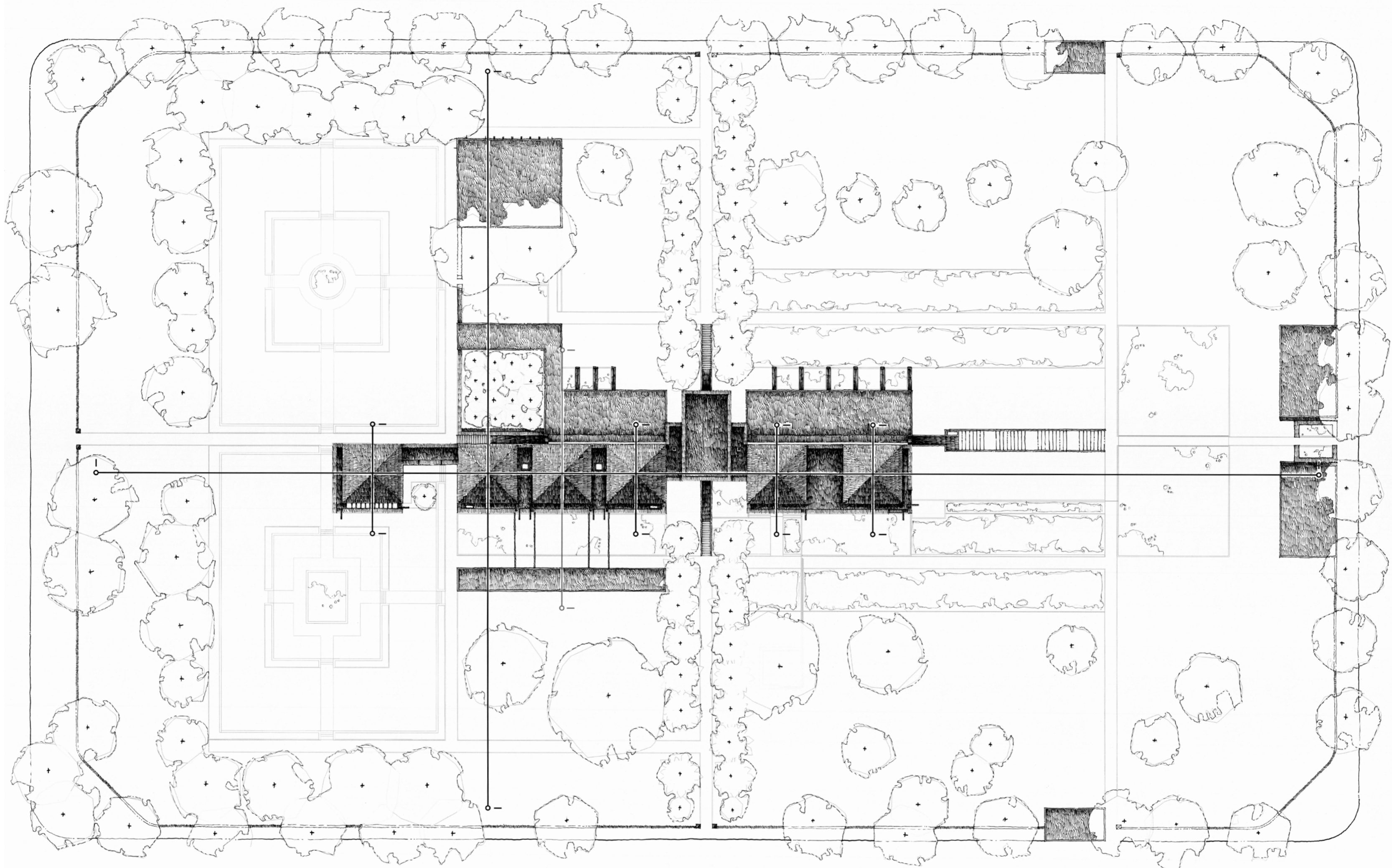


Figure 8.2 - Masterplan and roof plan of site



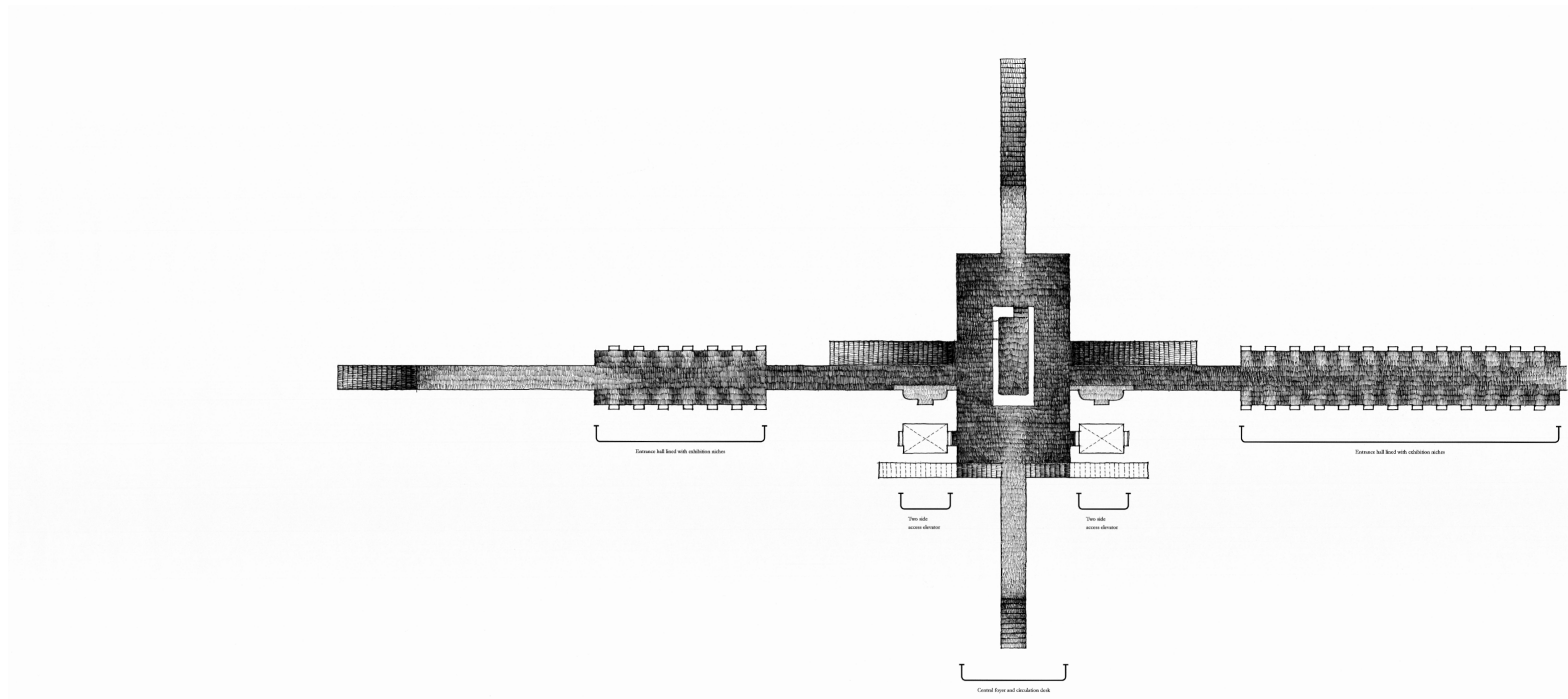


Figure 8.3 - Basement plan of main library building

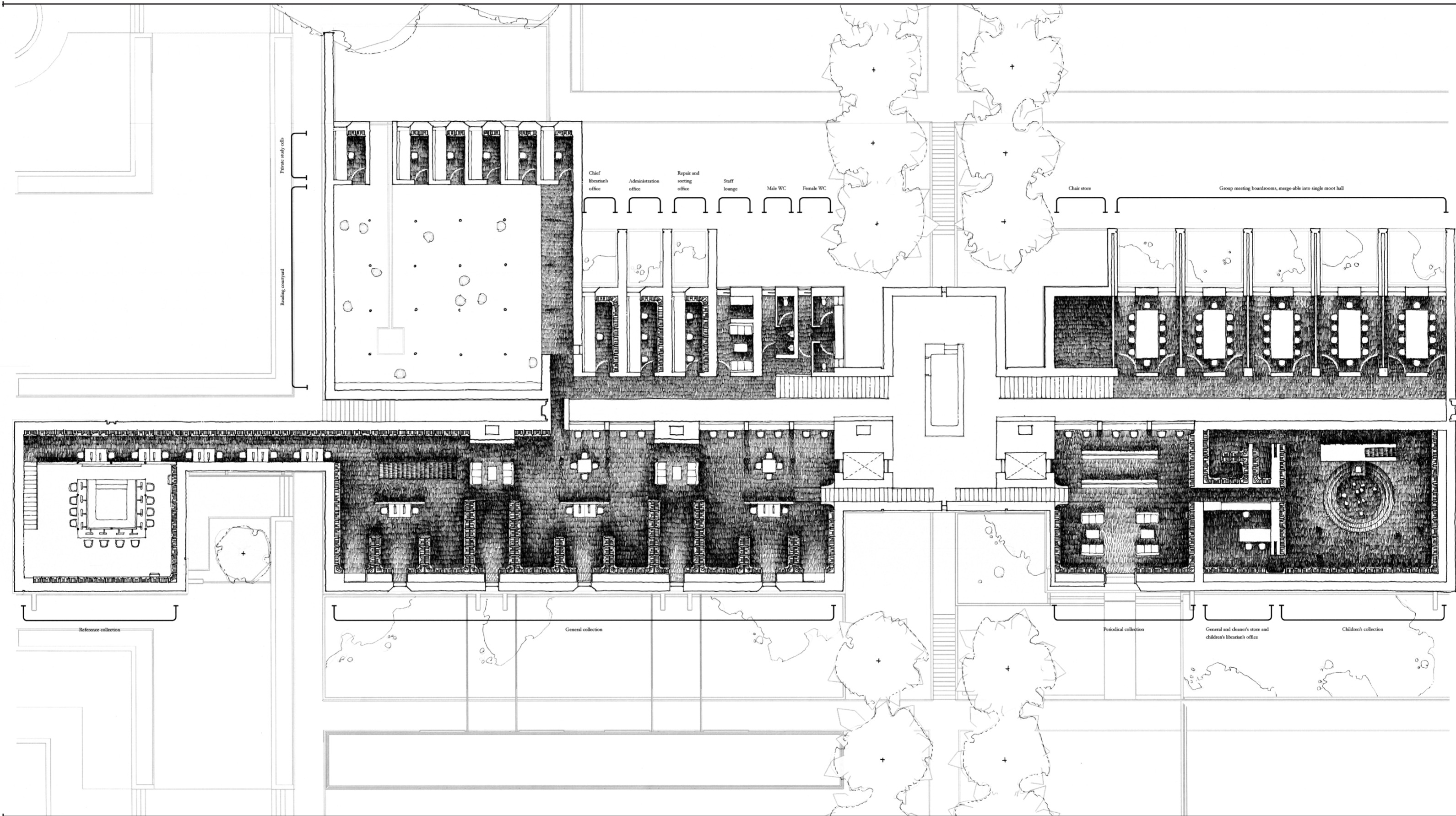


Figure 8.4 - Ground floor plan of main library building



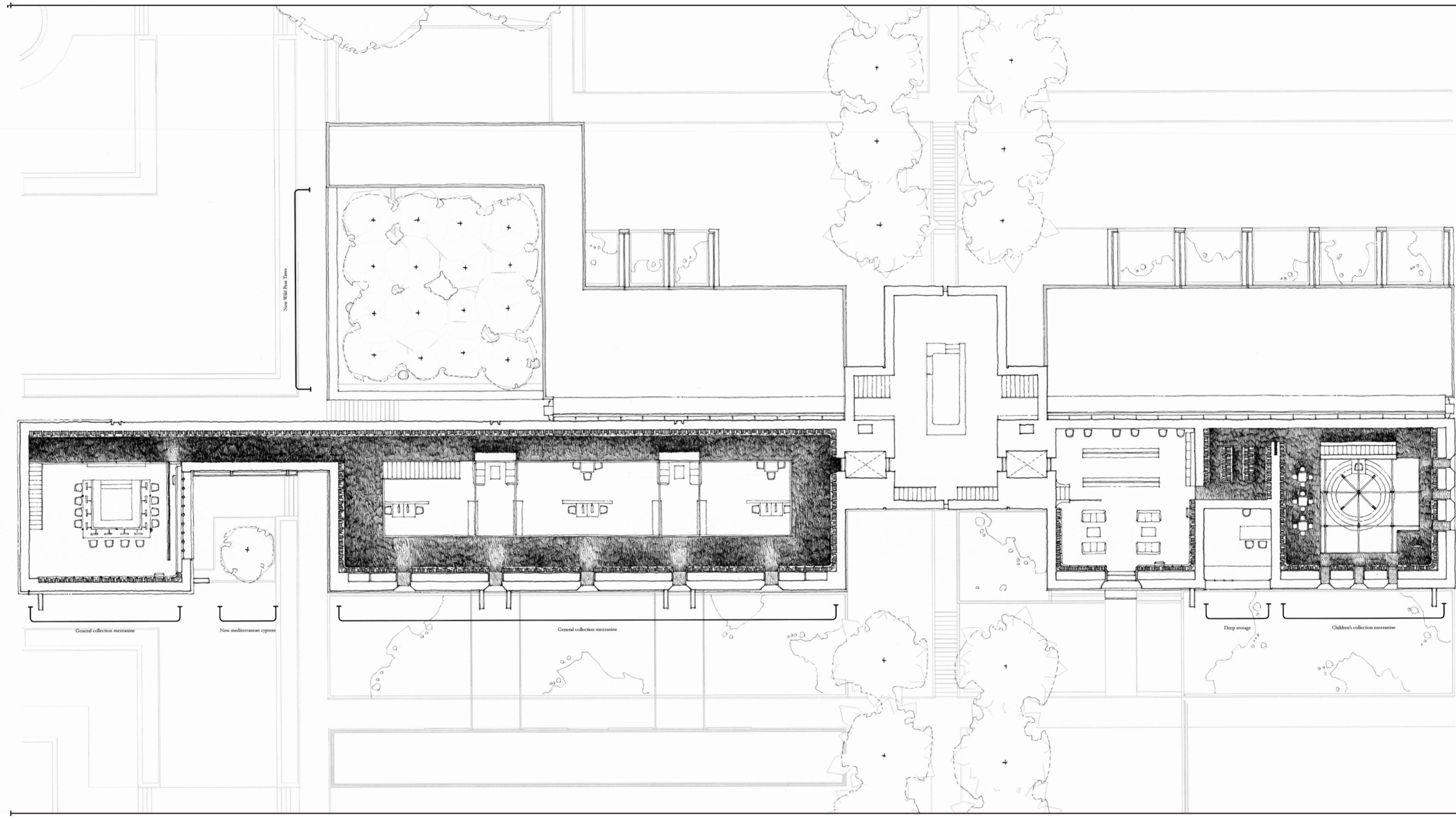


Figure 8.5 - Mezzanine plan of main library building



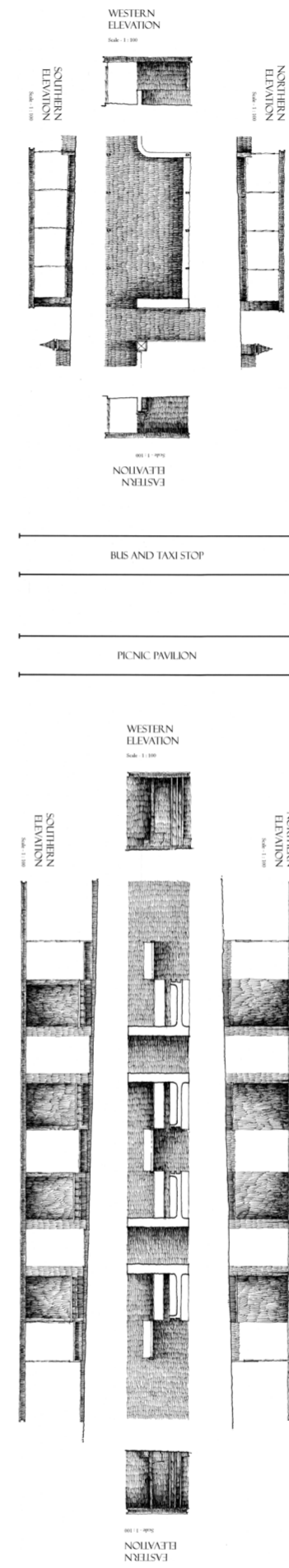
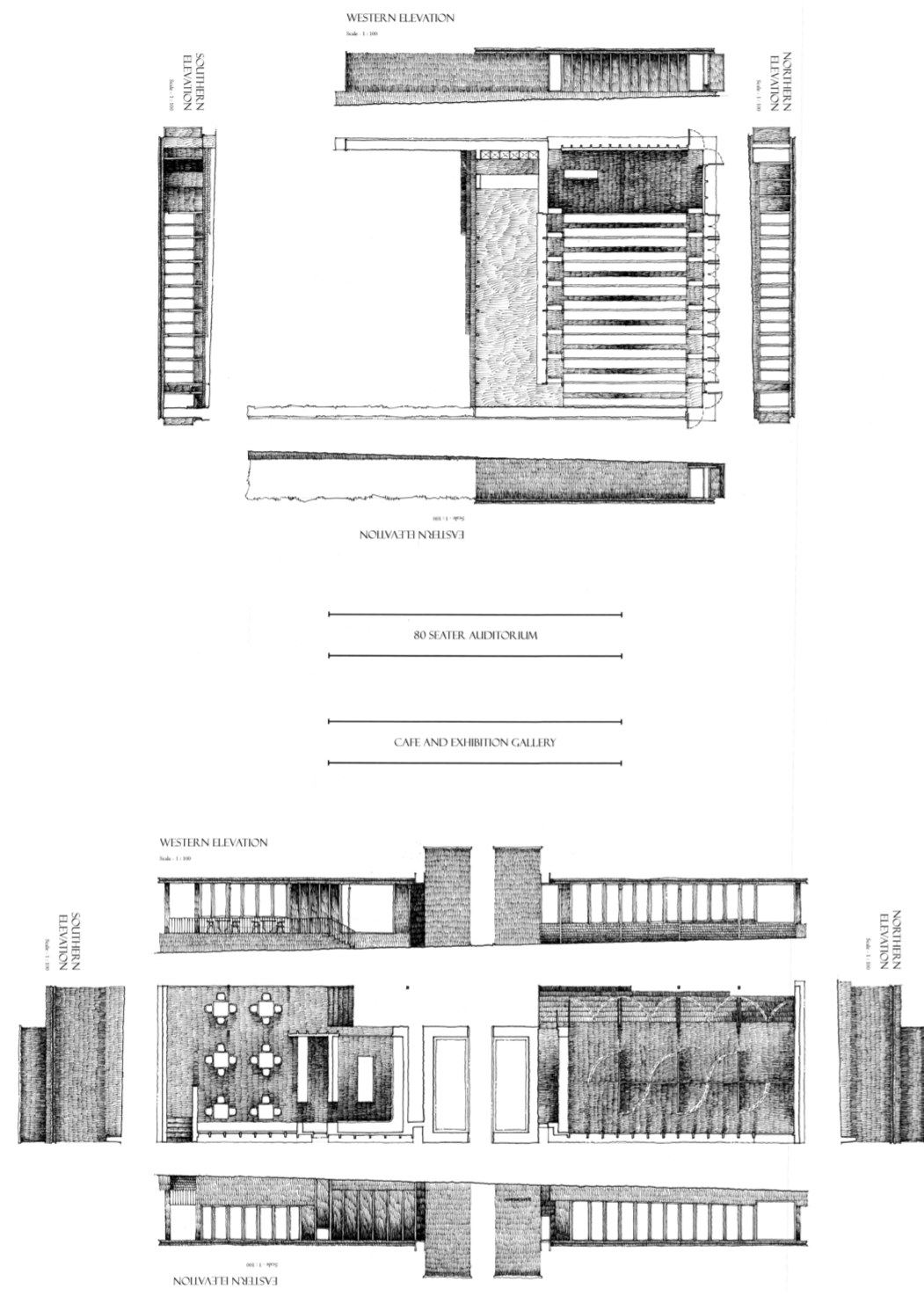


Figure 8.6 - Design drawings of ancillary buildings



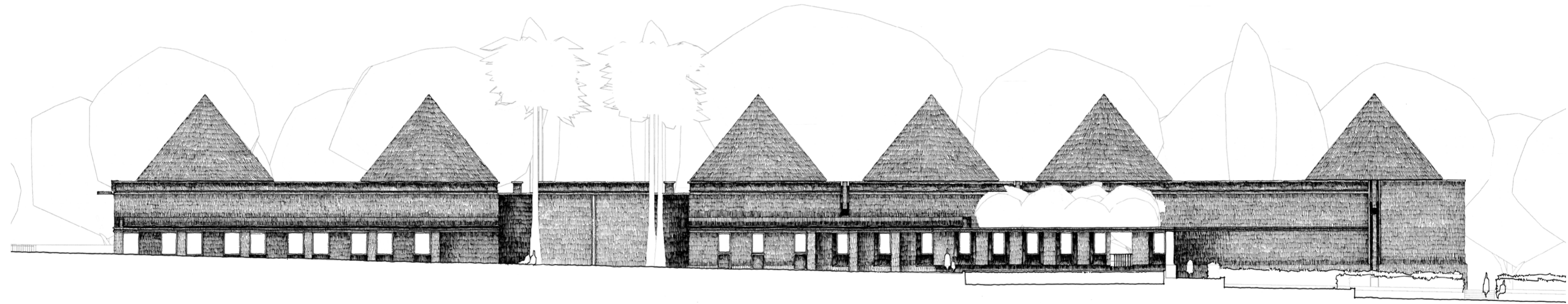


Figure 8.7 - Northern elevation of main library building



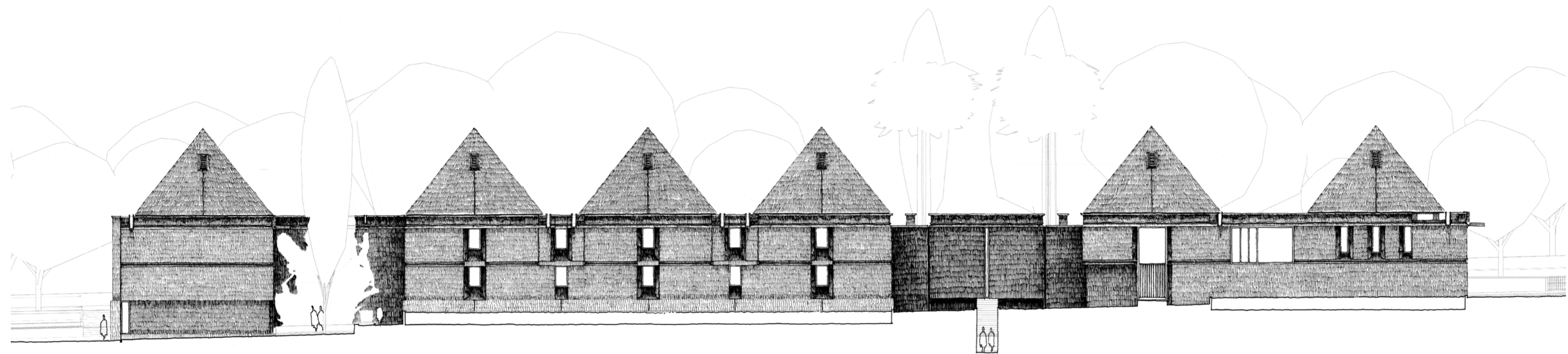


Figure 8.8 - Southern elevation of main library building



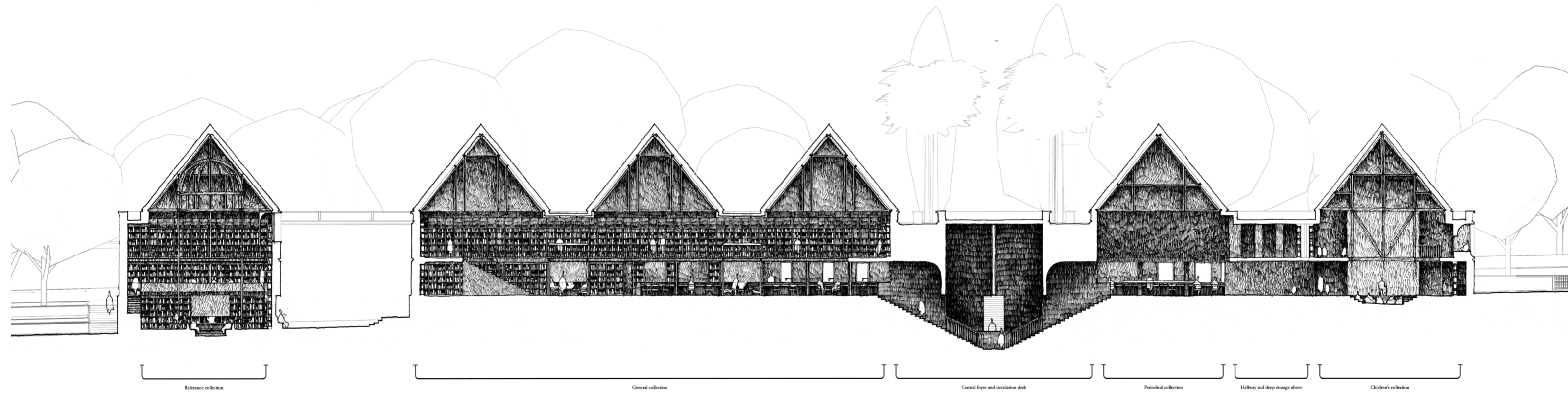


Figure 8.9 - Longitudinal section through main library building



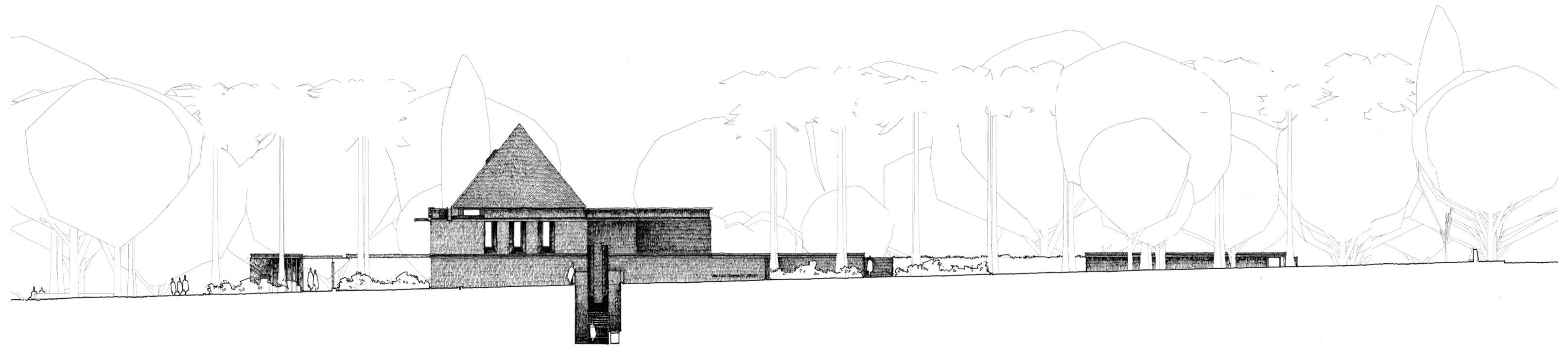


Figure 8.10 - Eastern elevation of main library building



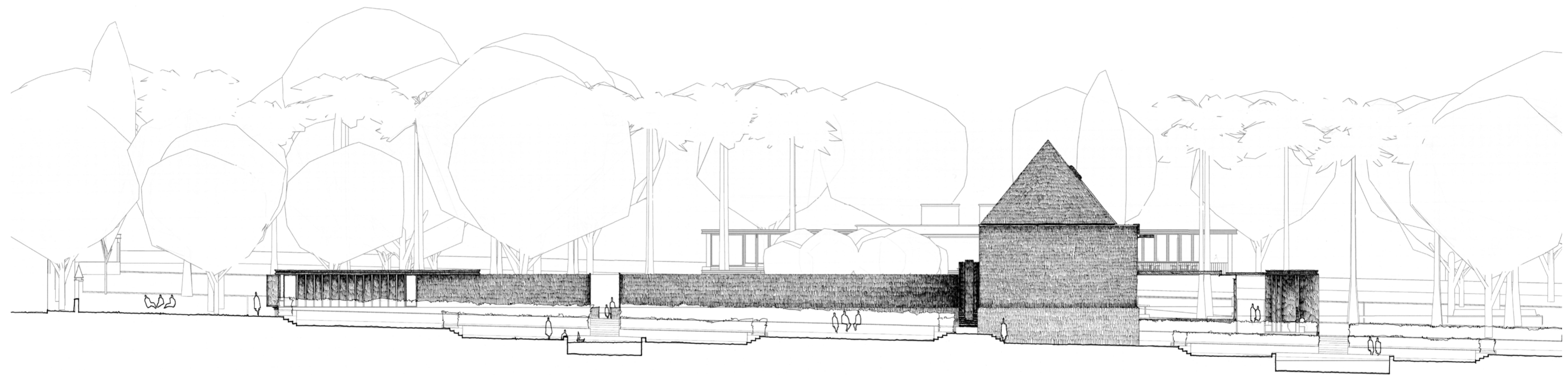


Figure 8.11 - Western elevation of main library building



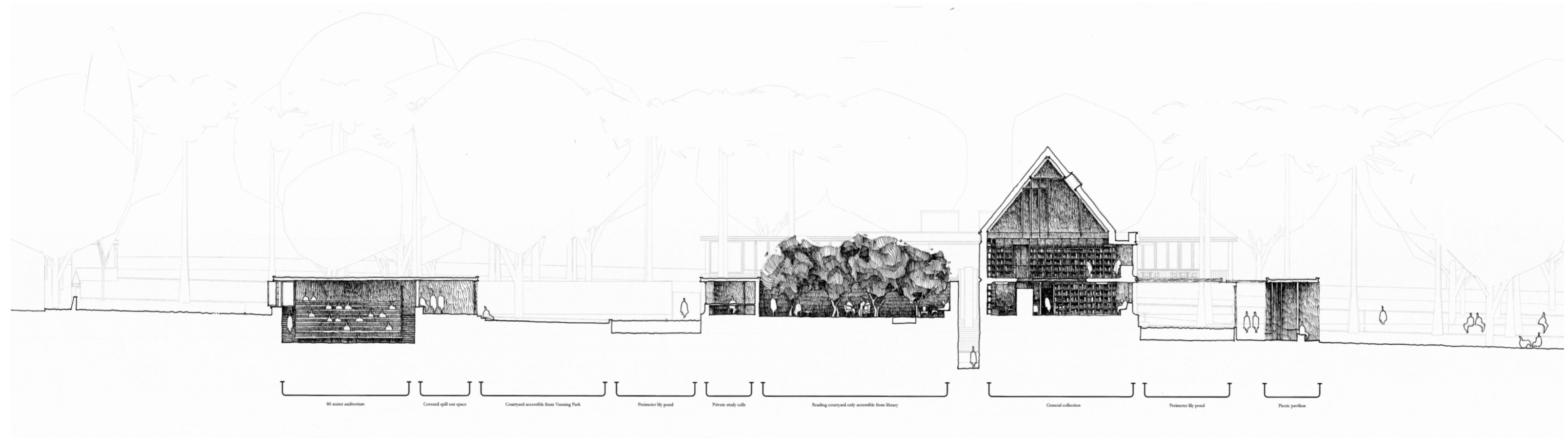


Figure 8.12 - Latitudinal section through main library building



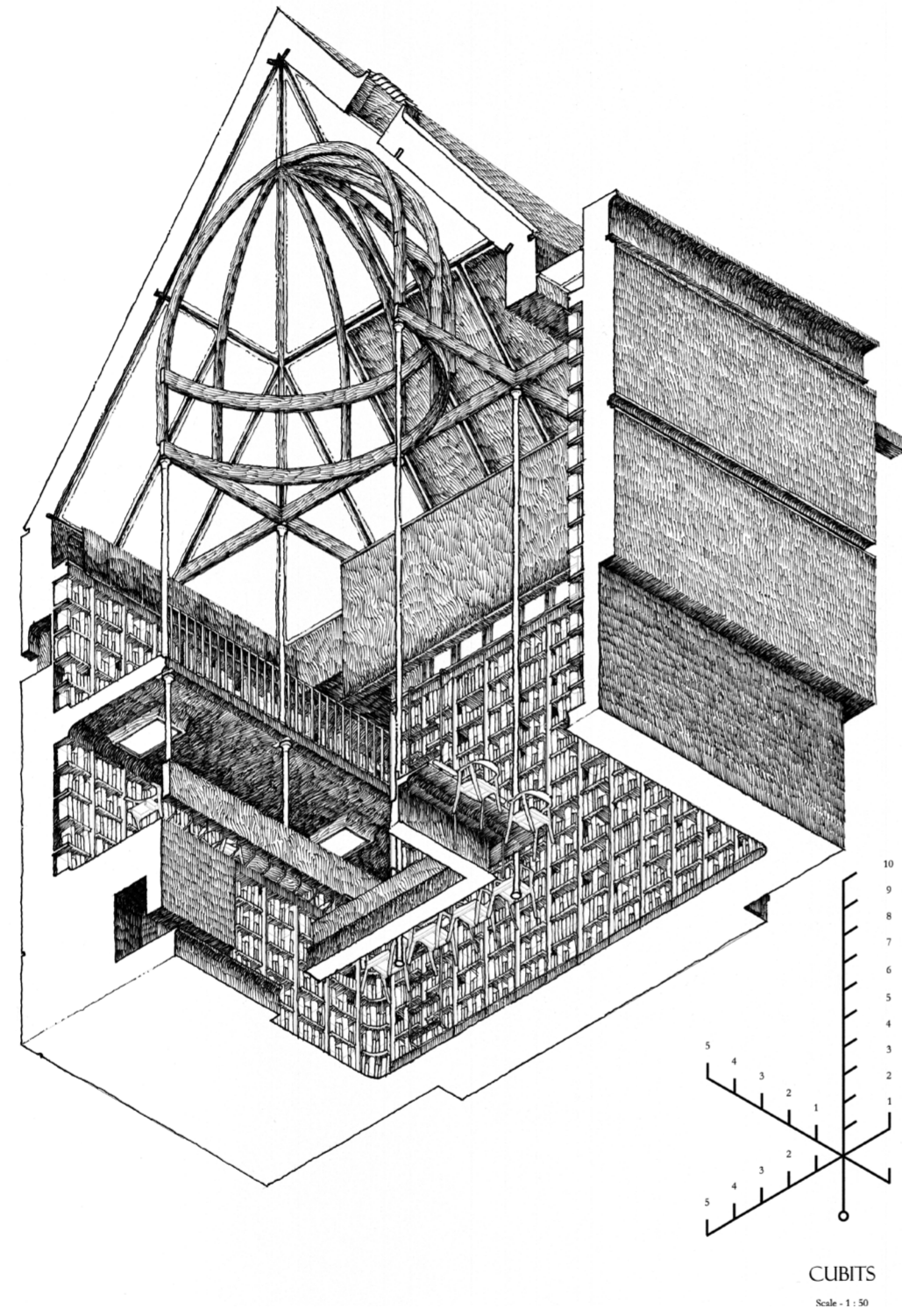


Figure 8.13 - Isometric cutaway of reference collection

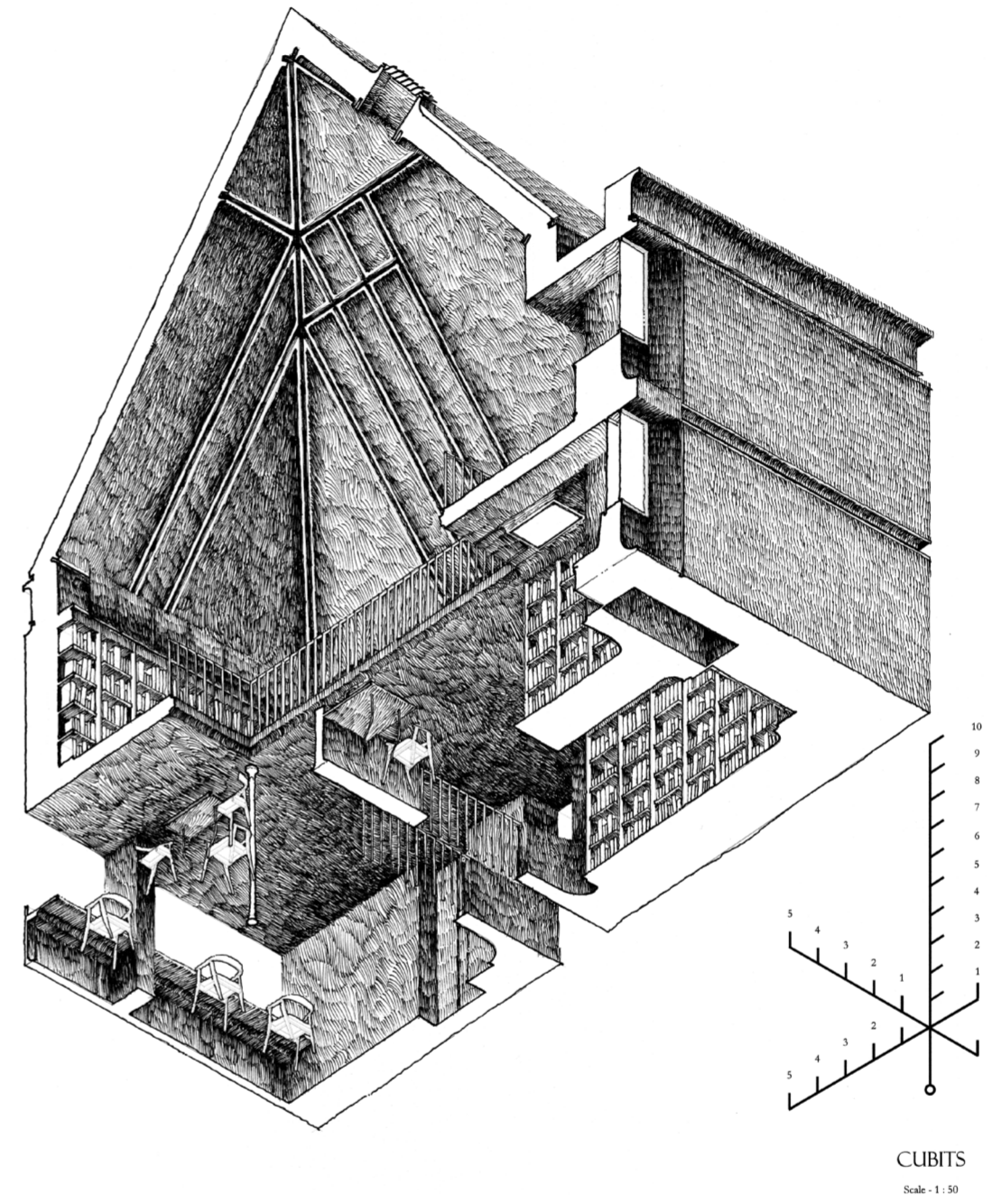
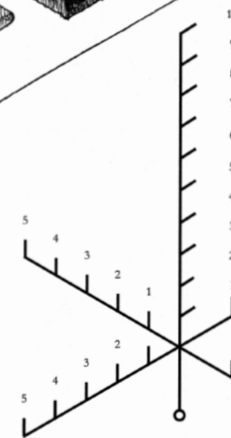
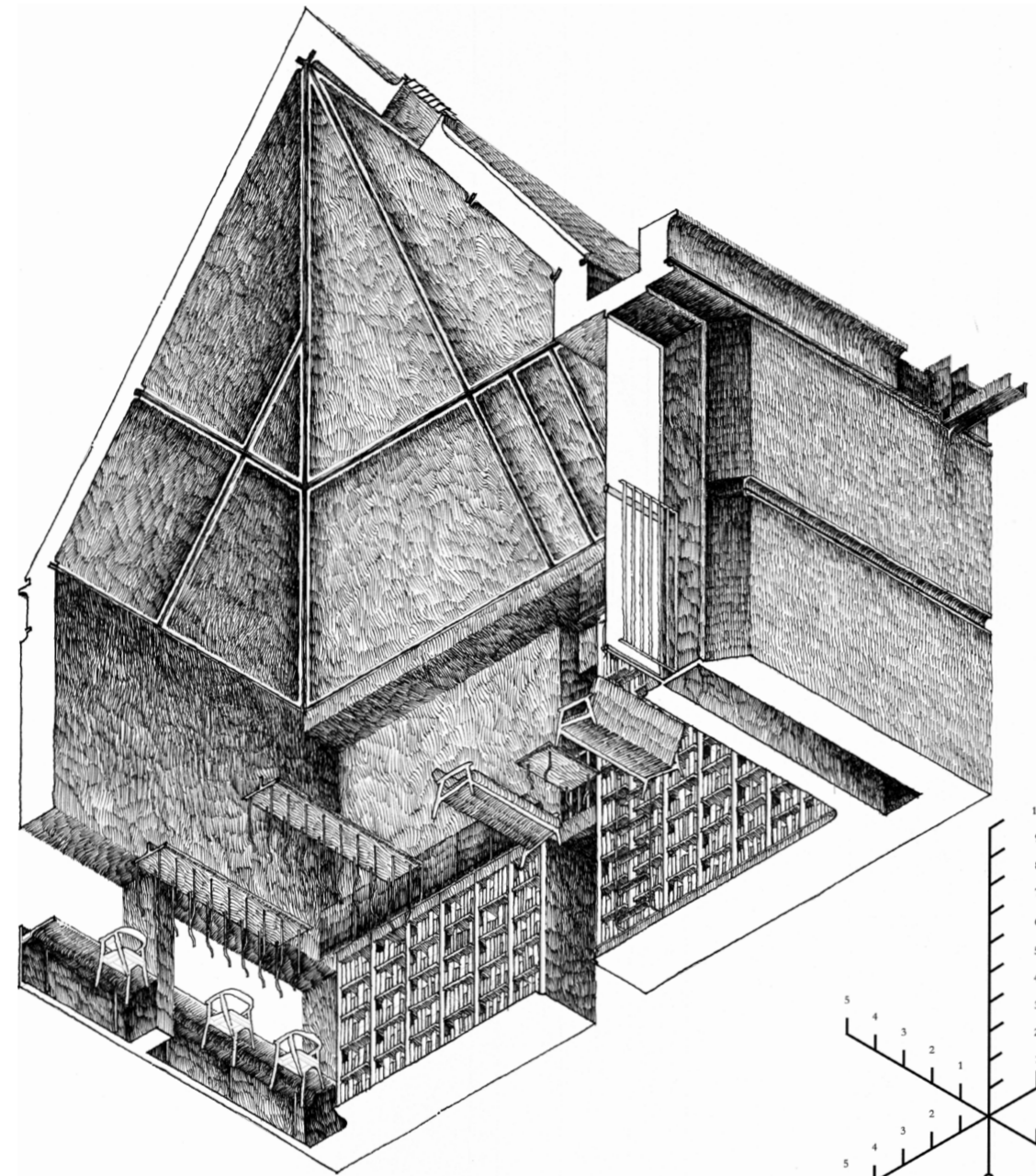


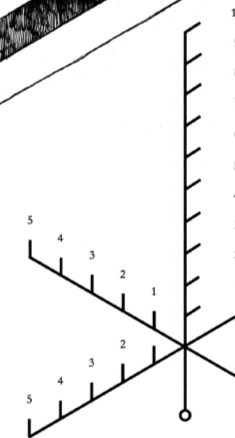
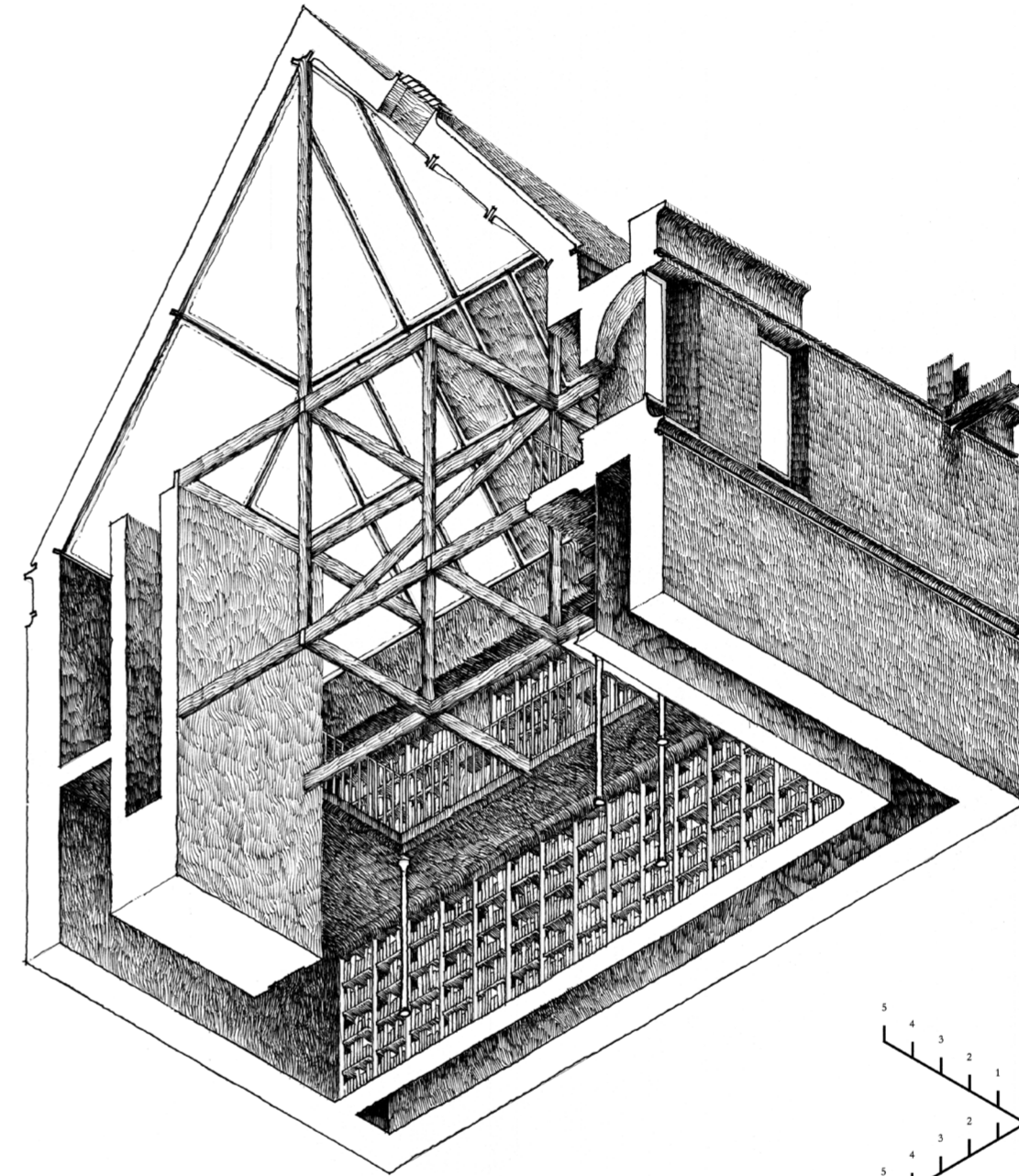
Figure 8.14 - Isometric cutaway of general collection





CUBITS
Scale - 1 : 50

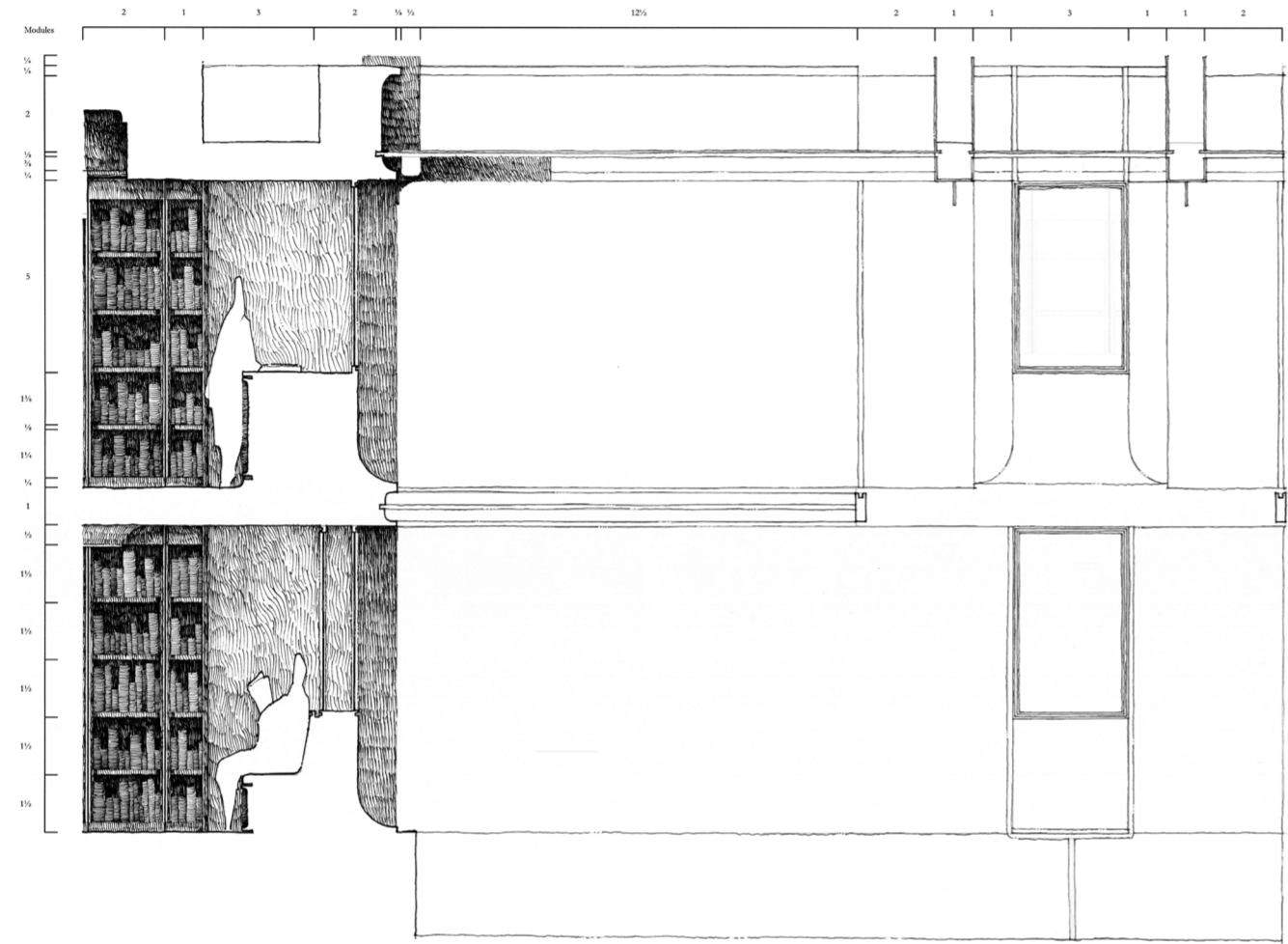
Figure 8.15 - Isometric cutaway of periodical collection



CUBITS
Scale - 1 : 50

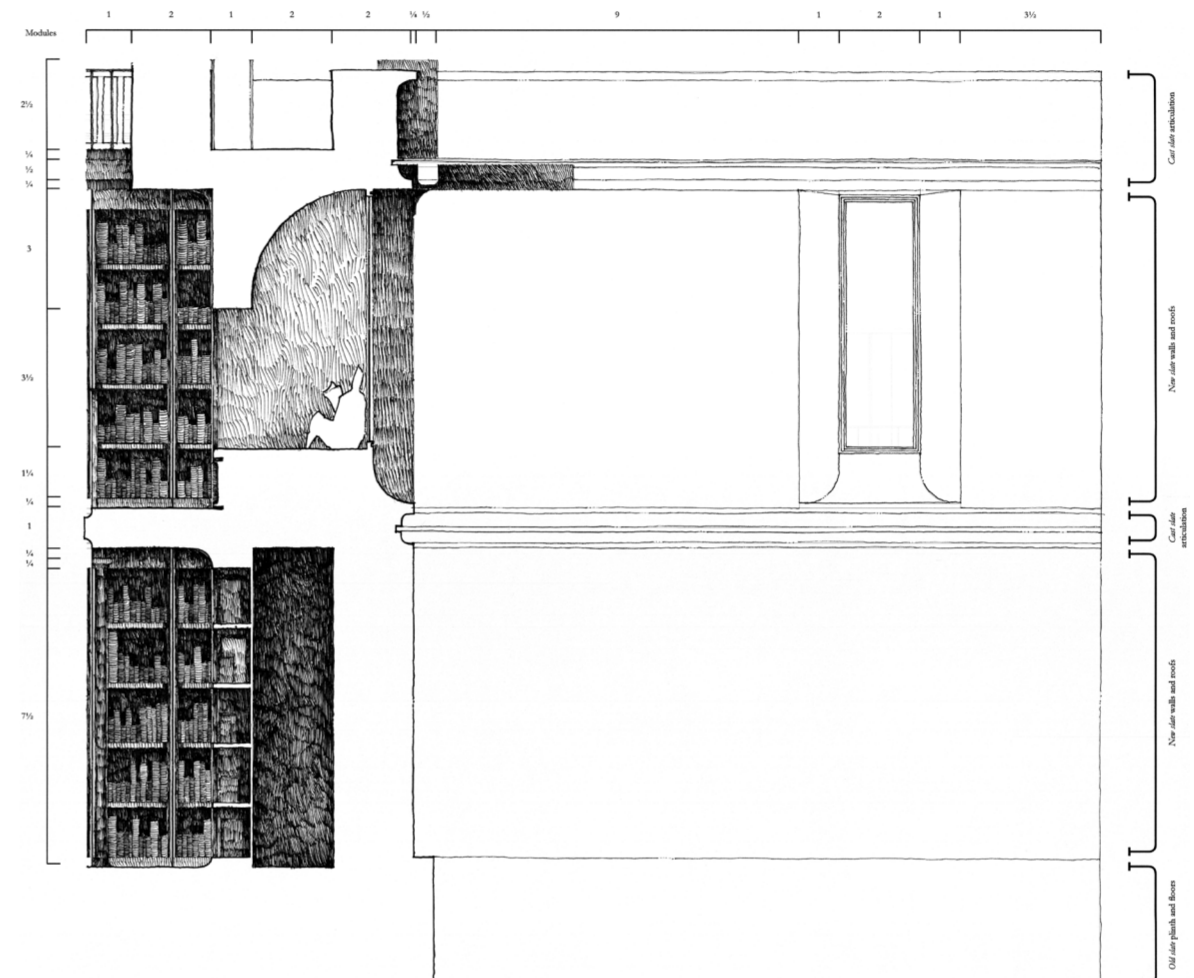
Figure 8.16 - Isometric cutaway of children's collection





GENERAL COLLECTION BAY WINDOWS

Scale: 1:20



CHILDRENS COLLECTION BAY WINDOWS

Scale: 1:20

Figure 8.17 - Section through inhabitable bay windows



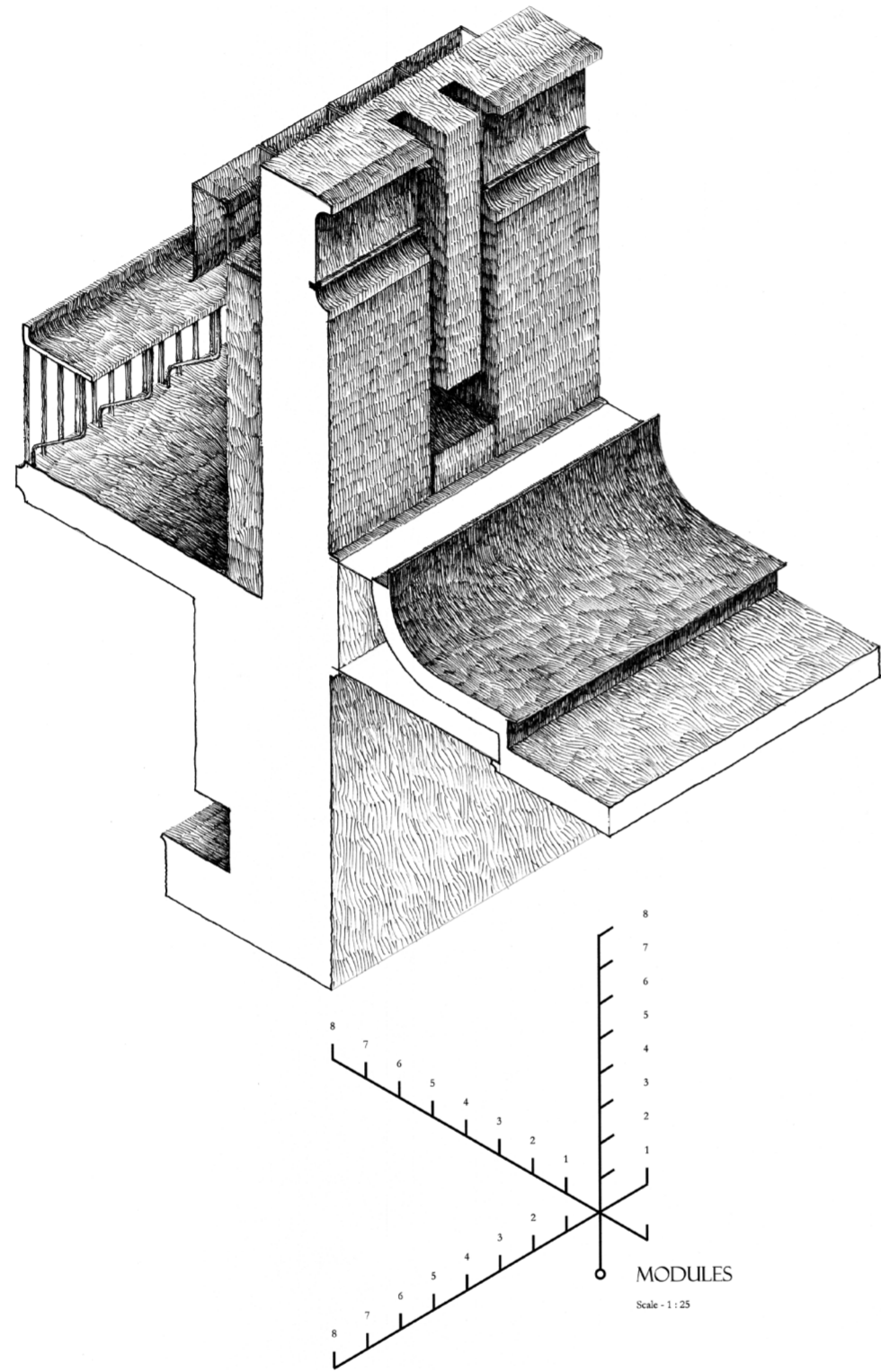


Figure 8.18 - Geometry detail at skylight

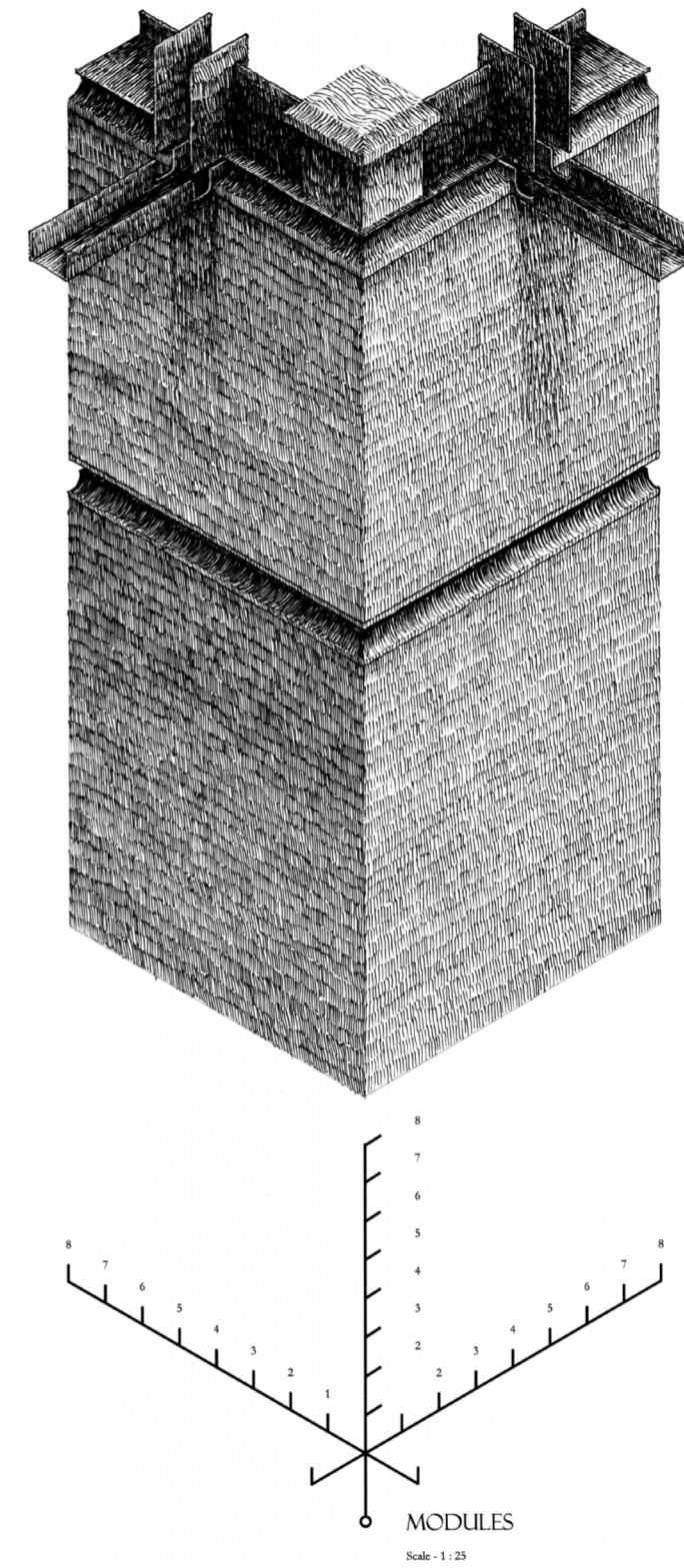


Figure 8.19 - Geometry detail at corner of children's collection

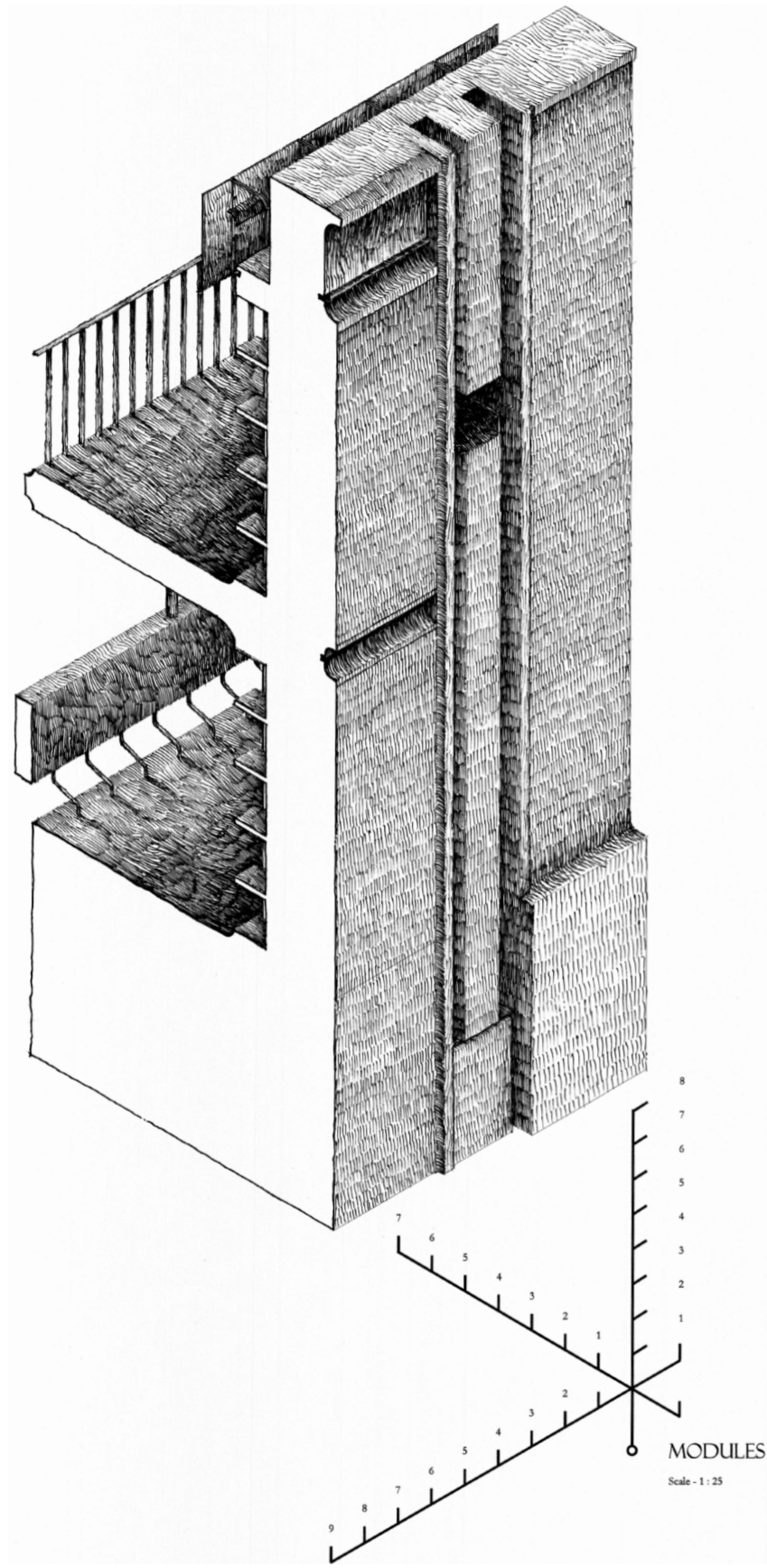


Figure 8.20 - Geometry detail at reference collection chimney

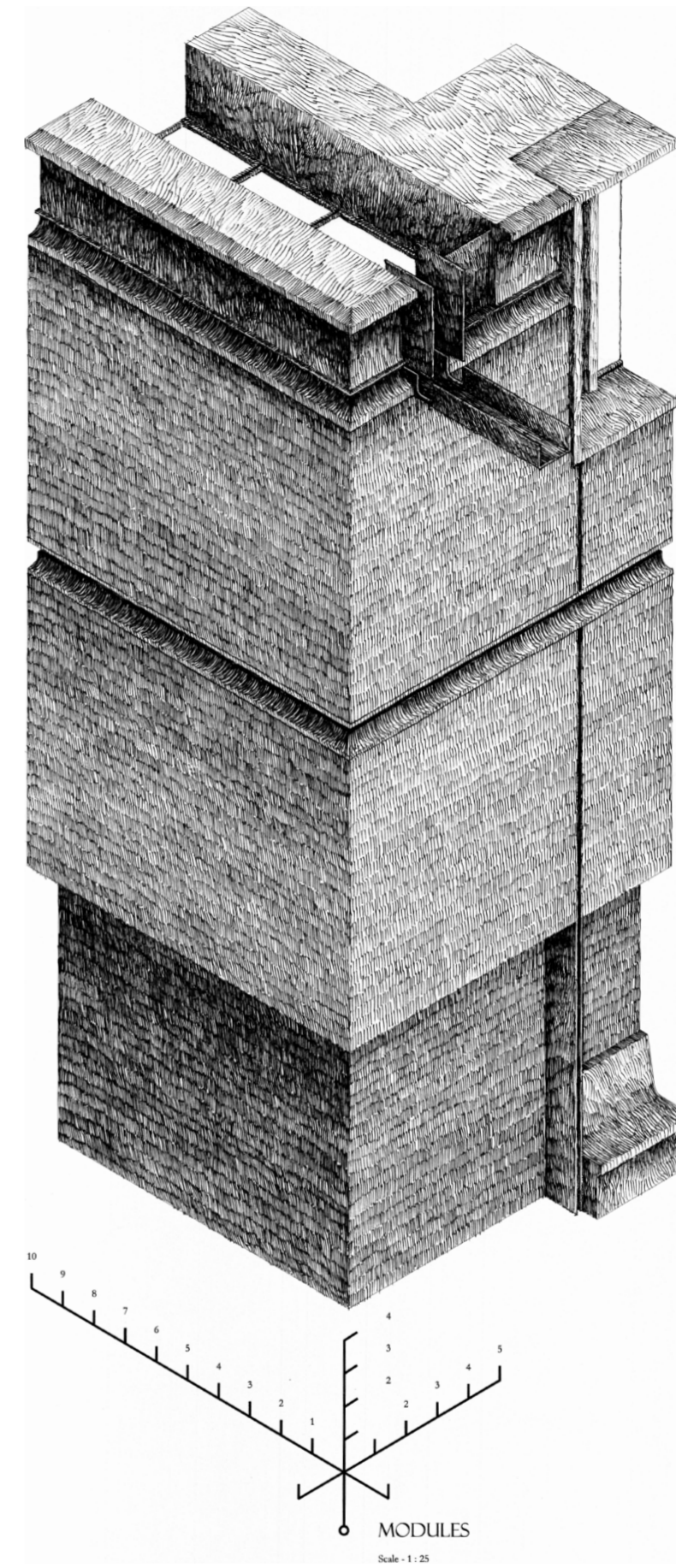


Figure 8.21 - Geometry detail at corner of reference collection



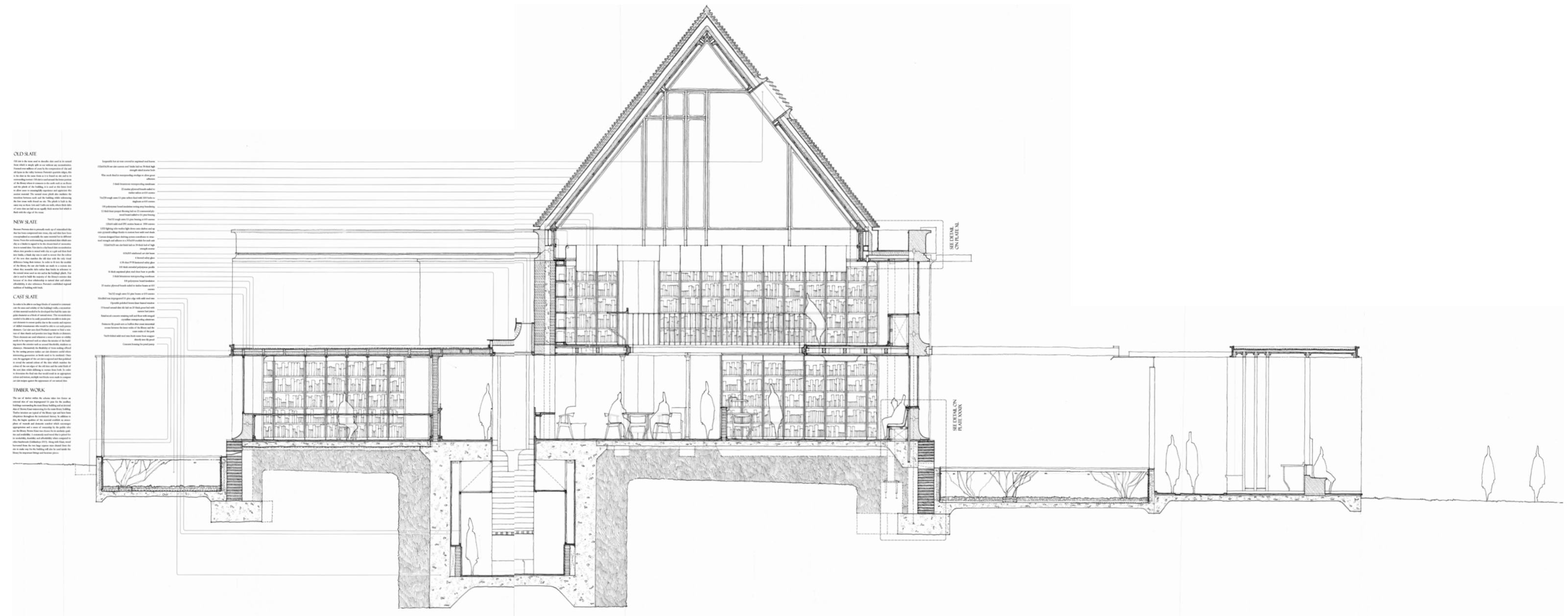


Figure 8.22 - Technical section drawn at scale 1 : 20



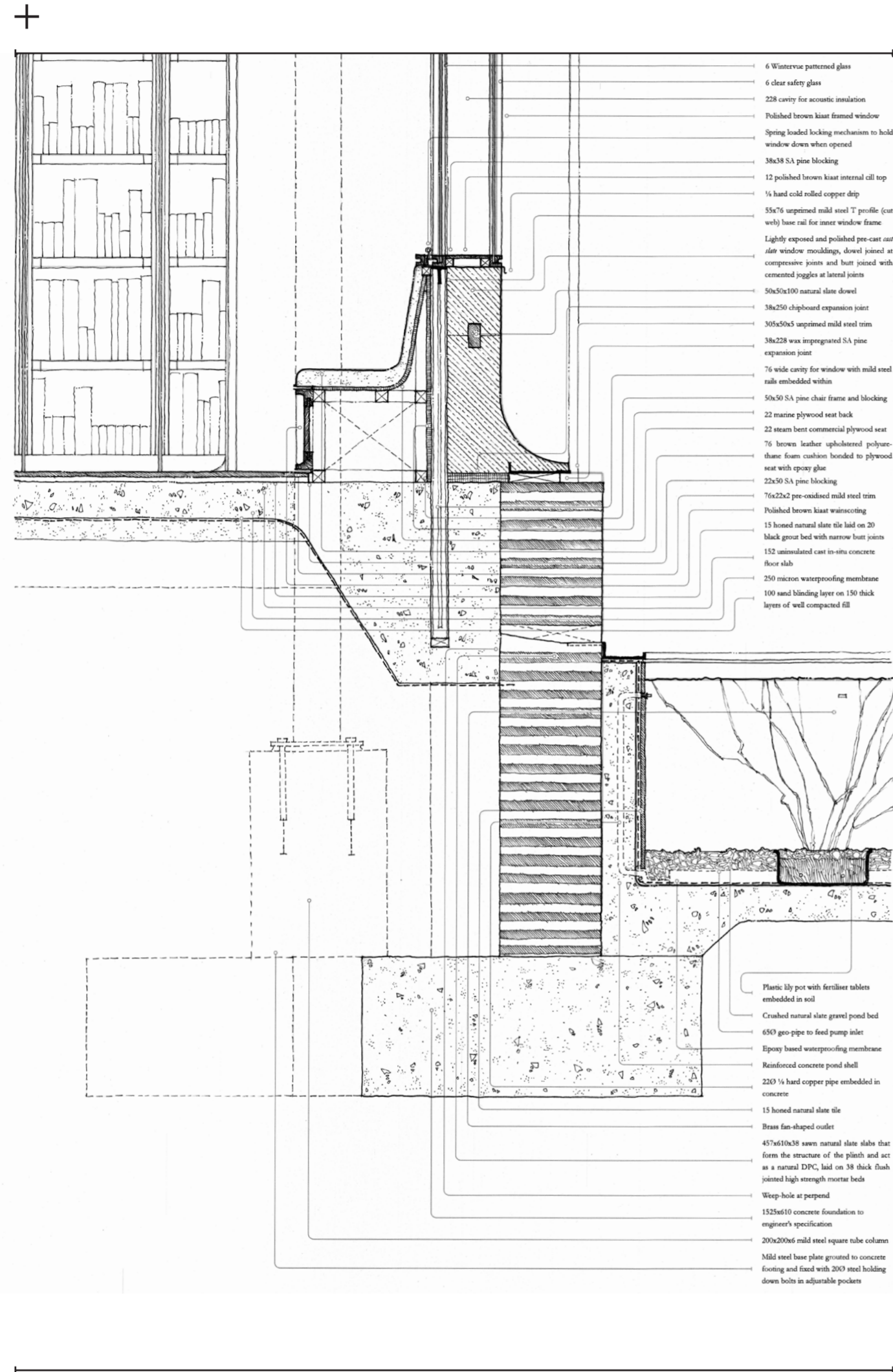


Figure 8.23 - Floor to wall detail drawn at scale 1 : 10

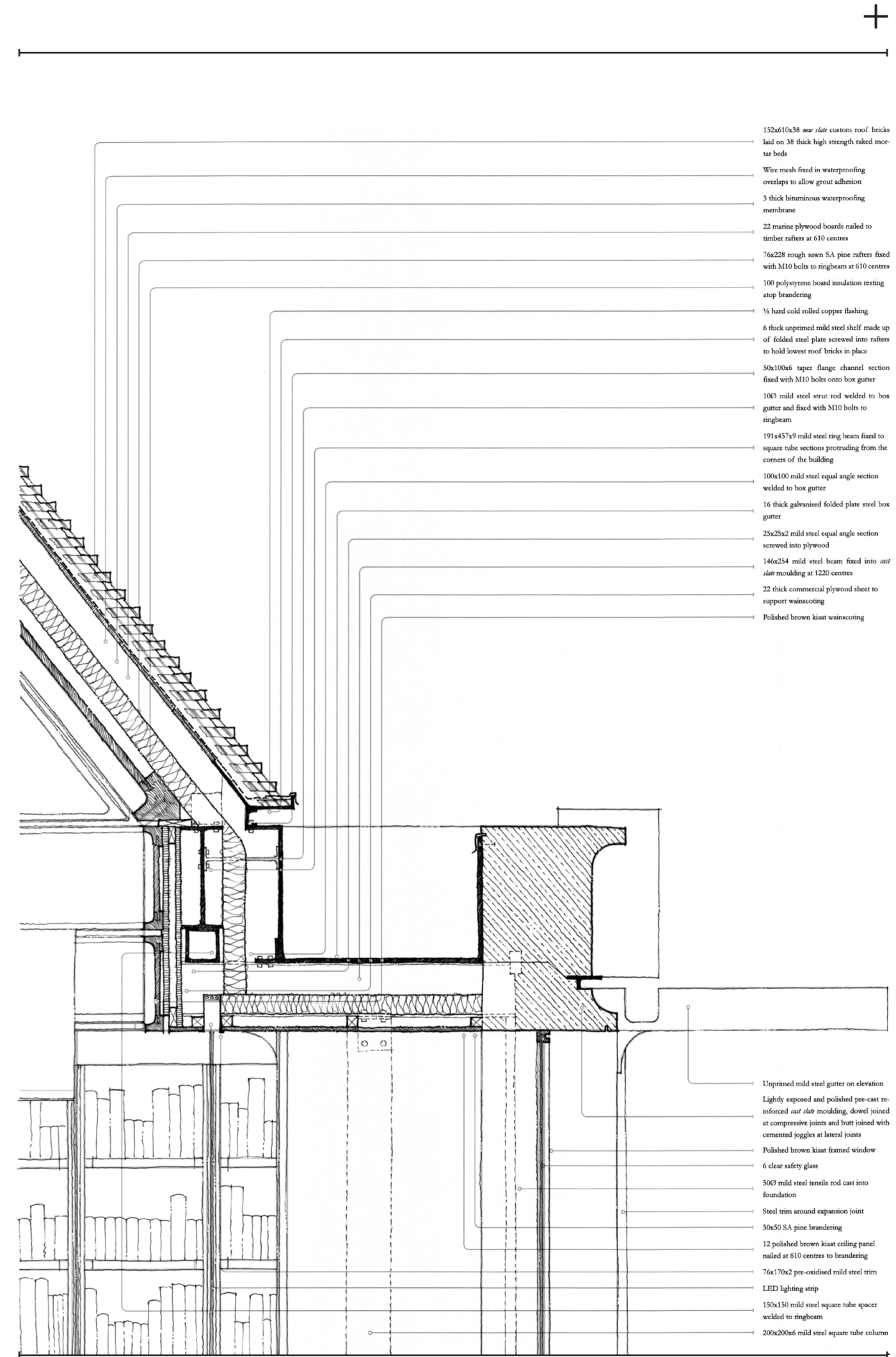


Figure 8.24 - Wall to roof detail drawn at scale 1 : 10

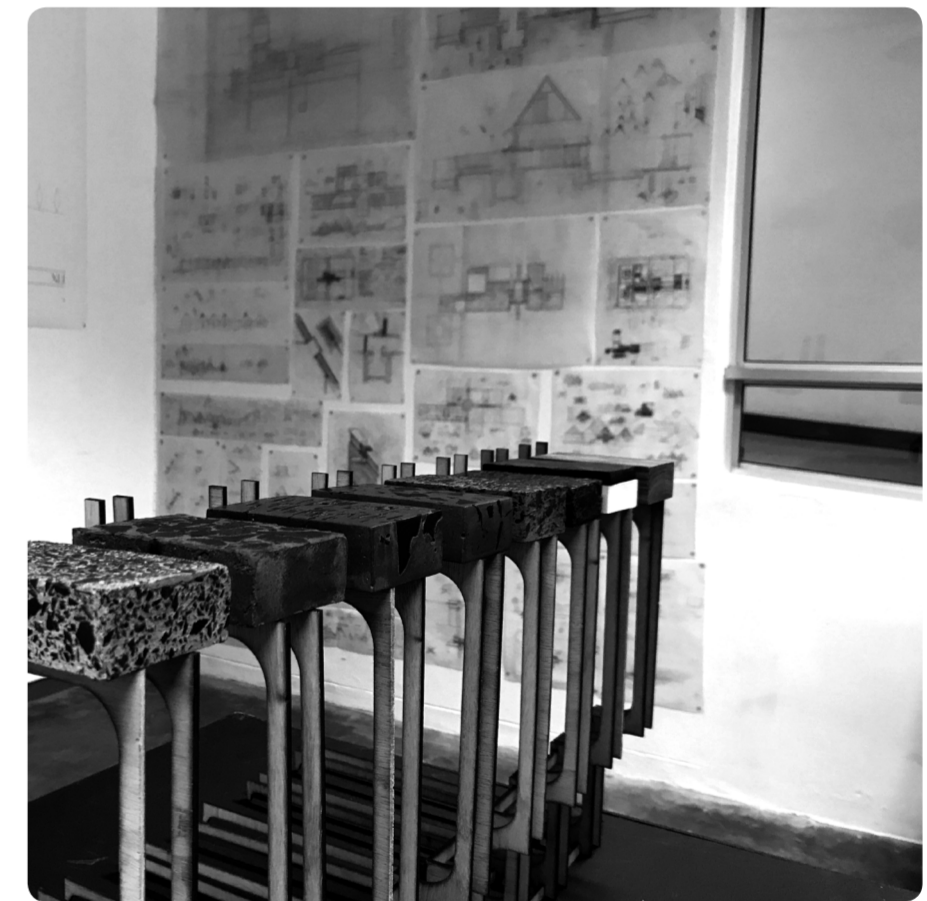


Figure 8.25 - Photographs of final exam exhibition





02

FIGURE 2.1

Cesare Cesariano's Discovery of Fire, *originsofarchitecture.wordpress.com*, 2019 [Image online] Available: <https://originsofarchitecture.wordpress.com/2012/12/28/origin-myths-in-renaissance-vitruvius-editions/> [Accessed 20 May 2019].

FIGURE 2.2

Model of Le Corbusier's Plan Voisin, *New English Review*, 2019 [Image online] Available: https://www.newenglshreview.org/custpage.cfm?frm=189525&sec_id=189525#_edn57 [Accessed 15 August 2019].

FIGURE 2.3

National Library locality plan

FIGURE 2.4

Information Desk at the National Library of South Africa, Jeremie Malan Architects and Interiors, 2019 [Image online] Available: <https://www.malanarchitects.co.za/national-library-of-south-africa> [Accessed 27 April 2019].

FIGURE 2.5

Decorative Panels in the National Library of South Africa, Jeremie Malan Architects and Interiors, 2019 [Image online] Available: <https://www.malanarchitects.co.za/national-library-of-south-africa> [Accessed 27 April 2019].

FIGURE 2.6

Interior of the National Library of South Africa, Jeremie Malan Architects and Interiors, 2019 [Image online] Available: <https://www.malanarchitects.co.za/national-library-of-south-africa> [Accessed 27 April 2019].

FIGURE 2.7

Square in Front of the National Library of South Africa, Jeremie Malan Architects and Interiors, 2019 [Image online] Available: <https://www.malanarchitects.co.za/national-library-of-south-africa> [Accessed 27 April 2019].

FIGURE 2.8

Atrium Volume in the National Library of South Africa, Jeremie Malan Architects and Interiors, 2019 [Image online] Available: <https://www.malanarchitects.co.za/national-library-of-south-africa> [Accessed 27 April 2019].

FIGURE 2.9

Fruit salad of generic materials and fittings

FIGURE 2.10

Superficially applied ornamentation

FIGURE 2.11

Decorative solar 'protection'

FIGURE 2.12

Impossibility to navigate without signage

FIGURE 2.13

Furnishings float in 'ocean' of open space

FIGURE 2.14

Sandton Library locality plan

FIGURE 2.15

One of the library's many lounges

FIGURE 2.16

Central ramp and foyer

FIGURE 2.17

Unused central lounge

FIGURE 2.18

Low, expansive ceiling plane

FIGURE 2.19

Custom yet repetitive fittings

FIGURE 2.20

Connection to the outside

FIGURE 2.21

Civic presence of the library

FIGURE 2.22

Lack of internal spatial variation

FIGURE 2.23

Constant machine noise within

FIGURE 2.24

Library's role in the square ensemble

FIGURE 2.25

functional legibility from codices

FIGURE 2.26

Tendency of users to gravitate away from large, impressive spaces

FIGURE 2.27

Clear distinction between the inner realm of the library and the outer realm of the square

FIGURE 2.28

Brooklyn Library locality plan

FIGURE 2.29

Unremarkable and

predictable interior experience

FIGURE 2.30

Civic presence of the library

FIGURE 2.31

Typical interior condition

FIGURE 2.32

Rules communicated by signage

FIGURE 2.33

The manifestation of placelessness

FIGURE 2.34

Uncompromisingly utilitarian

FIGURE 2.35

Library as an institution is subservient to the mall

FIGURE 2.36

Lack of memorability of the library

FIGURE 2.37

Impossibility for social interaction

FIGURE 2.38

Endlessly repeating elements

FIGURE 2.39

Generic architectural expression means that function is communicated through signage rather than architecture

FIGURE 2.40

The three dimensions of the triad

(composite image)

The Material Dimension, Arc of the World, 2019

[Image online] Available: <https://archoftheworld.tumblr.com> [Accessed 20 May 2019].

The Lived Dimension, Bradford F. Herzog, 1969

[Image online] Available: <https://i.pinimg.com/originals/90/90/12/90901264383d12ff08fb4363c292421.png> [Accessed 20 May 2019].

The Mental Dimension, Adolph von Menzel, 1864

[Image online] Available: <http://www.the-athenaeum.org/art/full.php?ID=53972#> [Accessed 20 May 2019].

03

FIGURE 3.1

Central Reading Room of the Stockholm Public Library, 1ZOOM.ME, 2019 [Image online] Available: <https://www.1zoom.me/en/wallpaper/464559/z3009.9/4956x3098> [Accessed 3 October 2019].

FIGURE 3.2

Exterior of the Stockholm Public Library,

Wikimedia Commons, 2017 [Image online] Available: <https://commons.wikimedia.org/wiki/File:DSCO0293x.jpg> [Accessed 4 August 2019].

FIGURE 3.3

Staircase in the Central Reading Room of the Stockholm Public Library, *wikiarquitectura.com*, 2019

[Image online] Available: <https://en.wikiarquitectura.com/building/stockholm-public-library/> [Accessed 17 June 2019].

FIGURE 3.4

Foyer Staircase of the Stockholm Public Library, Sam Teigen, 2010 [Image online] Available: https://www.archdaily.com/550172/spotlight-gunnar-asplund/5417de55c07a804873000092-spotlight-gunnar-asplund-photo?next_project=no [Accessed 4 August 2019].

FIGURE 3.5

Children's Reading Room in the Stockholm Public Library, *archphotographr*, 2010 [Image online] Available: <https://www.flickr.com/photos/33121715@N04/5286514028> [Accessed 4 August 2019].

FIGURE 3.6

Vestibule of the Stockholm Public Library, Federico Covre, 2019 [Image online] Available: <https://divisare.com/projects/367998-gunnar-asplund-federico-covre-stockholms-stadsbibliotek#lg=1&slide=5> [Accessed 4 August 2019].

FIGURE 3.7

Timeline of the library's development

(composite image)

The Great Library of Alexandria, O. Von Corven, 2001 [Image online] Available: <https://en.wikipedia.org/wiki/File:Ancientlibraryalex.jpg> [Accessed 31 May 2019].

The Twin Libraries of the Baths of Caracalla, Veronika Janssen, 2009 [Image online] Available: https://commons.wikimedia.org/wiki/Catagory:Baths_of_Caracalla#/media/File:Rom_Caracalla-Thermen_von_S%C3%BCden.JPG [Accessed 31 May 2019].

The Library of the Aedificium (fictional), Neil Packler, 2001 [Image online] Available: <https://www.architecturalpapers.ch/index.php?ID=75> [Accessed 31 May 2019].

Michaelangelo's Laurentian Library, Italy Magazine, 2015 [Image online] Available: <https://www.italymagazine.com/featured-story/renaissance-part-7-architecture> [Accessed 31 May 2019].

James Gibbs' Raddiffe Camera at Oxford, The Oxbridge Insider, 2019 [Image online] Available: <https://campusoxford.com/insider-info-the-story-of-the-radcliffe-camera/> [Accessed 31 May 2019].

Boullée's proposal for the Bibliotheque Nationale,

Wikimedia Commons, 2015 [Image online] Available: https://commons.wikimedia.org/wiki/Image:Bibliotheque_nationale_boul.jpg?uselang=it [Accessed 31 May 2019].

Labrouste's Bibliotheque Sainte Genevieve, Marie-Lan Nguyen, 2011 [Image online] Available: https://commons.wikimedia.org/wiki/Biblioth%C3%A8que_Sainte-Genevi%C3%A8ve#/media/File:Salle_de_lecture_Bibliotheque_Sainte-Genevieve_n02.jpg [Accessed 31 May 2019].

Gunnar Asplund's Stockholm City Library, *archikey.com*, 2019 [Image online] Available: <http://archikey.com/building/read/2867/Stockholm-Public-Library/881/> [Accessed 31 May 2019].

Alvar Aalto's Viipuri City Library Wikimedia Commons, 2011 [Image online] Available: https://en.wikipedia.org/wiki/File:Vyborg_Library_Interior_2.JPG [Accessed 31 May 2019].

Armarae are designed to house scrolls within walls, Romae Vitam, 2019 [Image online] Available: <https://www.romae-vitam.com/roman-baths.html> [Accessed 31 May 2019].

Chains are introduced to libraries to prevent theft, Eric Wakkel, 2013 [Image online] Available: <https://www.messynessychic.com/2013/06/07/the-chained-books-of-zutphen/> [Accessed 31 May 2019].

Permanent stone codex niches are built as reading seats, David Iliff, 2019 [Image online] Available: <http://britainandbritishness.com/2017/11/glorious-gloucestershire.html> [Accessed 31 May 2019].

Lectern systems replace medieval book chests, Masimiliano Calamelli, 2014 [Image online] Available: <https://www.atlasobscura.com/articles/chained-libraries-of-the-world> [Accessed 31 May 2019].

The stall system greatly increases the capacity of libraries, *alamy.com*, 2019 [Image online] Available: <https://www.alamy.com/stock-photo-the-library-of-the-university-of-leiden-or-leyden-17th-century-the-52663936.html> [Accessed 31 May 2019].

The wall system begins to define the library type, Oxford Picture Library, 2015 [Image online] Availa-



ble: <http://www.bbc.com/culture/story/20150821-you-picked-the-worlds-10-most-beautiful-libraries> [Accessed 31 May 2019].

Mounted ladders, stools and steps become commonplace, *Unsplash.com*, 2019 [Image online] Available: <https://unsplash.com/photos/lc7xcWebECc> [Accessed 31 May 2019].

The alcove is invented as a room within a room, *Bibliotheca Sanctus*, 2016 [Image online] Available: <https://bibliotheca-sanctus.tumblr.com/post/143057710350/the-wren-library-at-trinity-college-in-cambridge> [Accessed 31 May 2019].

Electric lighting revolutionises the design of the library, Natalia Radziejewska, 2019 [Image online] Available: <https://fineartamerica.com/featured/boston-public-library-reading-room-natalia-radziejewska.html> [Accessed 31 May 2019].

FIGURE 3.8

Rituals that define the library type

(composite image)

Locating, Library of Congress, 2016 [Image online] Available: <https://americanlibrariesmagazine.org/2016/01/04/cataloging-evolves/> [Accessed 31 May 2019].

Retrieving, Public Library of Cincinnati, 2019 [Image online] Available: <https://rarehistoricalphotos.com/the-old-cincinnati-library-demolition-1874-1955/> [Accessed 31 May 2019].

Accessing, The Odyssey Online, 2018 [Image online] Available: <https://www.theodysseyonline.com/27000-words-later-modern-literature> [Accessed 31 May 2019].

Returning, The Odyssey Online, 2018 [Image online] Available: <https://www.theodysseyonline.com/27000-words-later-modern-literature> [Accessed 31 May 2019].

FIGURE 3.9

Accommodation schedule

LIST OF FIGURES





04

FIGURE 4.1

Urban mapping of Arcadia

FIGURE 4.2

Proposed urban vision overlaid onto Tshwane RSDf and OSDf and the reintroduced historic tram lines

FIGURE 4.3

Axes relating the park to its context

FIGURE 4.4

Sunken Garden and Lily Pond in Venning Park, Mapio.net, 2019 [Image online] Available: <https://mapio.net/pic/p-15322225/>

[Accessed 14 April 2019].

FIGURE 4.5

Locality map of site

FIGURE 4.6

1948 layout of Venning Park

FIGURE 4.7

Contemporary layout of Venning Park

FIGURE 4.8

Venning Park's character as a place

FIGURE 4.9

Accessing the park

FIGURE 4.10

Landing observations of the park

FIGURE 4.11

Short-cut routes across the park

FIGURE 4.12

Signs of human occupation

FIGURE 4.13

The fire-gutted ruin on site

FIGURE 4.14

Destroyed boundary walls

FIGURE 4.15

Venning Park's state of dereliction

FIGURE 4.16

The north-south axis

FIGURE 4.17

Single park as two rooms

FIGURE 4.18

Character of the western room

FIGURE 4.19

Character of the eastern room

FIGURE 4.20

Experience of the north-south axis

FIGURE 4.21

Experience of the east-west axis

FIGURE 4.22

Space defining elements of the park

FIGURE 4.23

The east-west axis

FIGURE 5.1

Aerial Photograph of the BTU Cottbus IKMZ, Ulrich Zimmermann, 2011 [Image online] Available: <https://www.fresko-magazin.de/2491-2/>

[Accessed 8 August 2019].

FIGURE 5.2

Typical Floor Plan of the BTU Cottbus IKMZ, wiki arquitectura, 2019 [Image online] Available: <https://en.wikiarquitectura.com/building/cottbus-technical-university-library-ikmz/>

[Accessed 4 August 2019].

FIGURE 5.3

Interior of the BTU Cottbus IKMZ Facade, Evan Chakroff, 2007 [Image online] Available: <https://www.flickr.com/photos/evandagan/877702577>

[Accessed 4 August 2019].

FIGURE 5.4

Workstations in the BTU Cottbus IKMZ, Evan Chakroff, 2009 [Image online] Available: <https://www.flickr.com/photos/evandagan/3666094366/in/set-72157602495921908/>

[Accessed 4 August 2019].

FIGURE 5.5

Applied Ornamentation at the Swan and Dolphin Resorts, Michael Graves Architecture & Design, 2017 [Image online] Available: <https://www.dezeen.com/2017/04/28/michael-graves-walt-disney-world-dolphin-swan-hotels-architecture-orlando-florida-postmodernism/>

[Accessed 4 August 2019].

FIGURE 5.6

Central Wing of the Swan and Dolphin Resorts, The Disney Blog, 2017 [Image online] Available: <https://thedisneyblog.com/2017/02/06/new-england-patriots-fans-get-special-deal-at-swan-dolphin-resort-after-superbowl-win/>

[Accessed 4 August 2019].

FIGURE 5.7

Back of the Swan Resort Building, Michael Graves Architecture & Design, 2017 [Image online] Available: <https://www.dezeen.com/2017/04/28/mi->

chael-graves-walt-disney-world-dolphin-swan-hotels-architecture-orlando-florida-postmodernism/

[Accessed 4 August 2019].

FIGURE 5.8

Fountain in Front of the Swan and Dolphin Resorts, Werner Weiss, 2008 [Image online] Available: <https://www.yesterland.com/swandolphin.html>

[Accessed 4 August 2019].

FIGURE 5.9

Atrium in the Reception of the Dolphin Resort, James Cornet, 2010 [Image online] Available: https://www.archdaily.com/64270/ad-classics-walt-disney-world-swan-and-dolphin-resort-michael-graves/5037e1f028ba0d599b0001e7-ad-classics-walt-disney-world-swan-and-dolphin-resort-michael-graves-photo?next_project=no

[Accessed 4 August 2019].

chael-graves-walt-disney-world-dolphin-swan-hotels-architecture-orlando-florida-postmodernism/

FIGURE 5.8

Fountain in Front of the Swan and Dolphin Resorts, Werner Weiss, 2008 [Image online] Available: <https://www.yesterland.com/swandolphin.html>

[Accessed 4 August 2019].

FIGURE 5.9

Atrium in the Reception of the Dolphin Resort, James Cornet, 2010 [Image online] Available: https://www.archdaily.com/64270/ad-classics-walt-disney-world-swan-and-dolphin-resort-michael-graves/5037e1f028ba0d599b0001e7-ad-classics-walt-disney-world-swan-and-dolphin-resort-michael-graves-photo?next_project=no

[Accessed 4 August 2019].

FIGURE 6.1

17th Century Indo-Persian Rug, FJ Hakimian, 2018 [Image online] Available: <https://www.fjhakimian.com/blog/indian-decorative-carpets>

[Accessed 23 September 2019].

FIGURE 6.2

Landscape acts as buffer between the library and its context

FIGURE 6.3

New buildings do not interrupt existing rose bushes

FIGURE 6.4

Building maximises south facing area for lighting purposes

FIGURE 6.5

Recognition of axes representing four rivers of life

FIGURE 6.6

Building acts as a celebration of water

FIGURE 6.7

Water is celebrated in summer, roses are celebrated in winter

FIGURE 6.8

Models exploring the internal manifestation of the library

FIGURE 6.9

'Threshold' as gathering space

FIGURE 6.10

Undermining the visual control of the librarian to encourage appropriation

06

FIGURE 6.11

Interior model of children's library

FIGURE 6.12

Masterplan iterations

FIGURE 6.13

Storage and furnishings are integral to structure

FIGURE 6.14

Codices define internal space

FIGURE 6.15

Stepping upwards upon entering

FIGURE 6.16

Light washes wall of codices

FIGURE 6.17

Light encourages exploration

FIGURE 6.18

Darkness enhances interiority

FIGURE 6.19

Single hall made up of sub-spaces

FIGURE 6.20

Contrast of light elements enhances sense of mass

FIGURE 6.21

Horizontal articulation breaks vertical articulation

FIGURE 6.22

Ancillary functions pulled away from main building

FIGURE 6.23

Different architectural expression for different functions

FIGURE 6.24

Mass of wall scooped out to reveal thickness at windows

FIGURE 6.25

Southern wall made thicker because of presence of openings

FIGURE 6.26

Perimeter ponds act as interstitial 'rooms'

FIGURE 6.27

Rose bushes form buffer between inside and outside

FIGURE 6.28

Pyramids separate single hall into a series of smaller spaces

FIGURE 6.29

The pyramid as an inherently static form

FIGURE 6.30

Climatic role of the pyramid used to enhance the venturi effect

FIGURE 6.31

The module and its subdivisions

FIGURE 6.32

The Central Bath in the Therme Vals, Kazunori Fujimoto, 2015 [Image online] Available: <https://www.architectsjournal.co.uk/home/ju->

ry-disowns-clients-decision-to-appoint-morphosis-in-vals/8678305.article

[Accessed 4 August 2019].

FIGURE 6.33

The Roof of the Therme Vals, Carolina Angles, 2015 [Image online] Available: <https://carolinaangles.com/2015/10/29/say-no-to-style-community-oriented-architecture/>

[Accessed 4 August 2019].

FIGURE 6.34

Courtyard Pool at the Therme vals, Dee Speed, 2008 [Image online] Available: <https://www.flickr.com/photos/badgur/2574887932>

[Accessed 4 August 2019].

FIGURE 6.35

Closeup of the Courtyard Pool at the Therme vals, Hotel Therme Vals, 2013 [Image online] Available: <http://www.uncubemagazine.com/blog/11664073>

[Accessed 4 August 2019].

FIGURE 6.36

Stonework on the Therme Vals Facade, Archilovers.com, 2012 [Image online] Available: <https://www.archilovers.com/projects/70375/therme-vals.html>

[Accessed 4 August 2019].

FIGURE 6.37

Masterplan development drawing

FIGURE 6.38

First iteration massing model

FIGURE 6.39

Early conceptual section

FIGURE 6.40

Conceptual spatial exploration

FIGURE 6.41

Early sketch plan

FIGURE 6.42

Exploration of the pyramid

FIGURE 6.43

Second iteration massing model

FIGURE 6.44

Section through the children's library

FIGURE 6.45

Plan of central auditorium and foyer

FIGURE 6.46

Landscape design for the courtyard

FIGURE 6.47

Sketch plan of the children's library

FIGURE 6.48

Third iteration massing model

FIGURE 6.49

Elevations indicating surface articulation

FIGURE 6.50

Comparing architectural expressions

ry-disowns-clients-decision-to-appoint-morphosis-in-vals/8678305.article

[Accessed 4 August 2019].

FIGURE 6.33

The Roof of the Therme Vals, Carolina Angles, 2015 [Image online] Available: <https://carolinaangles.com/2015/10/29/say-no-to-style-community-oriented-architecture/>

[Accessed 4 August 2019].

FIGURE 6.34

Courtyard Pool at the Therme vals, Dee Speed, 2008 [Image online] Available: <https://www.flickr.com/photos/badgur/2574887932>

[Accessed 4 August 2019].

FIGURE 6.35

Closeup of the Courtyard Pool at the Therme vals, Hotel Therme Vals, 2013 [Image online] Available: <http://www.uncubemagazine.com/blog/11664073>

[Accessed 4 August 2019].

FIGURE 6.36

Stonework on the Therme Vals Facade, Archilovers.com, 2012 [Image online] Available: <https://www.archilovers.com/projects/70375/therme-vals.html>

[Accessed 4 August 2019].

FIGURE 6.37

Masterplan development drawing

FIGURE 6.38

First iteration massing model

FIGURE 6.39

Early conceptual section

FIGURE 6.40

Conceptual spatial exploration

FIGURE 6.41

Early sketch plan

FIGURE 6.42

Exploration of the pyramid

FIGURE 6.43

Second iteration massing model

FIGURE 6.44

Section through the children's library

FIGURE 6.45

Plan of central auditorium and foyer

FIGURE 6.46

Landscape design for the courtyard

FIGURE 6.47

Sketch plan of the children's library

FIGURE 6.48

Third iteration massing model

FIGURE 6.49

Elevations indicating surface articulation

FIGURE 6.50

Comparing architectural expressions

FIGURE 6.51

Iterating the treatment of openings

FIGURE 6.52

Early elevation explorations

FIGURE 6.53

First Floor Plan of St. Cyprian's School IT Centre, Noero Architects, 2019 [Image online] Available: <http://www.noeroarchitects.com/project/st-cyprians-school-it-centre/>

[Accessed 4 August 2019].

FIGURE 6.54

Exterior of the St. Cyprian's School IT Centre, Noero Architects, 2019 [Image online] Available: <http://www.noeroarchitects.com/project/st-cyprians-school-it-centre/>

[Accessed 4 August 2019].

FIGURE 6.55

Material Palette of the St. Cyprian's School IT Centre, Noero Architects, 2019 [Image online] Available: <http://www.noeroarchitects.com/project/st-cyprians-school-it-centre/>

[Accessed 4 August 2019].

FIGURE 6.56

Interior of the St. Cyprian's School IT Centre, Noero Architects, 2019 [Image online] Available: <http://www.noeroarchitects.com/project/st-cyprians-school-it-centre/>

[Accessed 4 August 2019].

FIGURE 6.57

Massing Model of St. Cyprian's School IT Centre, Noero Architects, 2019 [Image online] Available: <http://www.noeroarchitects.com/project/st-cyprians-school-it-centre/>

[Accessed 4 August 2019].

FIGURE 6.58

Timber Roof and Oculus of the Trenton Bath House, Phaidon, 2019 [Image online] Available: <https://uk.phaidon.com/agenda/architecture/picture-galleries/2010/october/27/rebirth-of-an-icon-louis-kahns-jewish-community-centre/>

[Accessed 4 August 2019].

FIGURE 6.59

Trenton Bath House in Context, Marie-Louise Halpenny, 2019 [Image online] Available: <https://marielouisehalpenny.com/Trenton-Bath-House-New-Jersey>

[Accessed 4 August 2019].

FIGURE 6.60



tive.com/pickupsticks/filter/Boundary/Reconfigured-Architectural-Imagination [Accessed 4 August 2019].

FIGURE 6.62

Roof to Wall Connection of the Trenton Bath House, TCM, 2019 [Image online] Available: <https://lamokaledger.com/tag/historic-preservation/> [Accessed 4 August 2019].

07

FIGURE 7.1

Thermal condition of the library

FIGURE 7.2

Location of local Kaaat forests

FIGURE 7.3

Location of local slate deposits

FIGURE 7.4

The use of slate as a contextual and heritage response

(composite image)

Slate bedrock of the city, u/brasher (Reddit user), 2015 [Image online] Available: https://www.reddit.com/r/mildlyinteresting/comments/2lszu5/this_big_slate_rock/ [Accessed 23 September 2019].

FIGURE 7.5

Waste ratio of South African slate

(composite image)

Useable, cut stone, Adobe Substance, 2019 [Image online] Available: <https://source.substance3d.com/allassets/c76df13b47499224b140a8164a107d4af-32c3bee?q=slate>

[Accessed 23 September 2019].

Waste tips, shards and dust, Adobe Substance, 2019 [Image online] Available: <https://source.substance3d.com/allassets/5b179dabc3e009383d6cd-942f32ebbbadb6b44fc?q=slate>

[Accessed 23 September 2019].

FIGURE 7.6

Surface texture of old slate, Union tiles, 2019 [Image online] Available: <https://uniontiles.co.za/shop/montauk-black-natural-cleft/> [Accessed 23 September 2019].

FIGURE 7.7

Surface texture of new slate, Fireclay Tile, 2019 [Image online] Available: <https://www.fireclaytile.com/brick/colors/detail/black-hills/glazed-thin-brick-flats> [Accessed 23 September 2019].

FIGURE 7.8

Surface texture of cast slate

FIGURE 7.9

Exploration samples made to create cast slate with the desired finish

FIGURE 7.10

Surface articulation and moulding explorations

FIGURE 7.11

Designing the treatment of openings

08

FIGURE 8.1

Roof volume model making process

FIGURE 8.2

Masterplan and roof plan of site

FIGURE 8.3

Basement plan of main library building

FIGURE 8.4

Ground floor plan of main library building

FIGURE 8.5

Mezzanine plan of main library building

FIGURE 8.6

Design drawings of ancillary buildings

FIGURE 8.7

Northern elevation of main library building

FIGURE 8.8

Southern elevation of main library building

FIGURE 8.9

Longitudinal section through main library building

FIGURE 8.10

Eastern elevation of main library building

FIGURE 8.11

Western elevation of main library building

FIGURE 8.12

Latitudinal section through main library building

FIGURE 8.13

Isometric cutaway of reference collection

FIGURE 8.14

Isometric cutaway of general collection

FIGURE 8.15

Isometric cutaway of periodical collection

FIGURE 8.16

Isometric cutaway of children's collection

FIGURE 8.17

Section through inhabitable bay windows

FIGURE 8.18

Geometry detail at skylight

FIGURE 8.19

Geometry detail at corner of children's collection

FIGURE 8.20

Geometry detail at reference collection chimney

FIGURE 8.21

Geometry detail at corner of reference collection

FIGURE 8.22

Technical section drawn at scale 1 : 20

FIGURE 8.23

Floor to wall detail drawn at scale 1 : 10

FIGURE 8.24

Wall to roof detail drawn at scale 1 : 10

FIGURE 8.25

Photographs of final exam exhibition

LIST OF FIGURES





Kayamandi Development Services 2006. *Production of Slate Slabs Feasibility Study*.

Anon 1920. Utilization of Refuse Slate. *Scientific American*, 123, 547.

Auge, M. 1995. *Non-Places Introduction to an Anthropology of Supermodernity*. London: Verso.

Aurand, M. 2011. Teaching and Learning with Collections: The Library as a Site for Exploration and Inspiration. *Art Documentation: Journal of the Art Libraries Society of North America*, 30, 12-20.

Bennett, H. 2013. The Psyche of the Library: Physical Space and the Research Paradigm. *Art Documentation: Journal of the Art Libraries Society of North America*, 32, 174 - 185.

Brawne, M. & Pehnt, A. 1970. *Libraries: Architecture and Equipment*. New York: Praeger Publishers.

Buchanan, P. 2012. The Big Rethink The Purposes of Architecture. *Architectural Review*, April 1-9.

Cadwell, M. 2008. Two Stones. *Log*, 12, 13-19.

Campbell, J. W. P. & Pryce, W. 2013. *The Library: A World History*. Chicago: The University of Chicago Press.

Capillé, C. 2018. Political Interiors: The Case of Public Libraries. *Space and Culture*, 21, 408-423.

Design, M. G. a. A. n.d. *Walt Disney World Dolphin & Swan Hotels* [Online]. Princeton, New Jersey.

Available: <https://www.michaelgraves.com/projects/swan-and-dolphin-hotels/> [Accessed 22 July 2019].

Easton, E. 1985. *Unpublished notes on Venning Park*. University of Pretoria. (Lodged in the archives of the University of Pretoria Department of Architecture, Archive number: 00089)

Everett, A. & Barritt, C. M. H. 1994. *Materials*. Harlow: Longman Scientific & Technical.

Geldenhuis, K. J. 2013. *The Many Uses of Pterocarpus Angolensis aka 'Kiaat'* [Online]. SA Forestry online. Available: http://saforestryonline.co.za/articles/natural_forests/the_many_uses_of_pterocarpus_angolensis_aka_kiaat/ [Accessed 10 October 2019].

Handisyde, C. C. 1963. *Building Materials: Science and Practice*. [London]: [Architectural Press].

Harries, K. 1997. *The Ethical Function of Architecture*. Cambridge, Mass: MIT Press.

Herzog & Meuron, D. 2005. *166 Cottbus Library* [Online]. Available: <https://www.herzogdemeuron.com/index/projects/complete-works/151-175/166-cottbus-library.html> [Accessed 22 July 2019].

Huff, J. 2003. On My Mind: Defining the Non-Virtual Library. *American Libraries*, 34, 36.

Jellicoe, G. & Jellicoe, S. 1995. *The Landscape of Man: Shaping the Environment From Prehistory to the Present Day*. New York, N.Y.: Thames and Hudson.

Jones, P. B. 2006. *Gunnar Asplund*. London: Phaidon Press Inc.

Jordaan, J. 2015. *Constructing Place: Towards a Phenomenological Framework for Architecture in the Twenty-First Century*. Philosophiae Doctor in Architecture, University of Pretoria.

Jules D. Prown, K. E. D. 2014. *Louis I. Kahn in Conversation, Interviews with John W. Cook and Heinrich Klotz, 1969-70*. New Haven: Yale Center for British Art.

Kay, J. H. 1974. Ideals & Axioms: Library Architecture. *American Libraries*, 5, 240-246.

Krier, L. 1983. *RES PUBLICA + RES PRIVATE*. Hoboken, New Jersey: Architectural Design.

Leach, N. 2005. Part II Phenomenology. In: Leach, N. (ed.) *Rethinking Architecture A reader in cultural theory*. New York: Taylor and Francis.

Michael, H. & Peter, K. 2015. 'The Signature of Architecture': Compositional Ideas in the Theory of Profiles. *Architectural Histories* [Online], 3. Available: <https://journal.eahn.org/articles/10.5334/ah.cu/#>.

Mickiewicz, P. 2016. Access and Its Limits: The Contemporary Library as a Public Space. *Space and Culture*, 19, 237-250.

Mostafavi, M. & Leatherbarrow, D. 1993. *On Weathering: The Life of Buildings in Time*. Cambridge, Mass: MIT Press.

Naidoo, D. 2006. *Review of the Dimension Stone Industry 2006*. Pretoria: Department of Mineral Resources.

National Building Research, I. & National Development Fund for the Building, I. 1967. *Handbook of South African natural building stone*. National Development Fund for the Building Industry.

Neufert, E., Neufert, P. & Kister, J. 2012. Libraries. In: Baiche, B. & Walliman, N. (eds.) *Architects' data*. 4th ed. ed. Chichester, West Sussex, UK :: Wiley-Blackwell.

Noble, J. A. 2011. *African Identity in Post-Apartheid Public Architecture: White Skin, Black Masks*. Farnham Ashgate Pub.

Noero, J. n.d. *St. Cyprian's School – IT Centre* [Online]. Available: <https://www.noeroarchitects.com/project/st-cyprians-school-it-centre/> [Accessed 22 July 2019].

Norberg-Schulz, C. 1976. The Phenomenon of Place. In: Nesbitt, K. (ed.) *Theorizing a New Agenda for Architecture An Anthology of Architectural Theory*. New York: Princeton Architectural Press.

Oti, J. E., Kinuthia, J. M. & Bai, J. 2010. Unfired Clay Masonry Bricks Incorporating Slate Waste. *Proceedings of Institution of Civil Engineers: Waste and Resource Management*, 163, 17-27.

Oti, J. E., Kinuthia, J. M., Snelson, D. G. & Bai, J. 2010. Applications of Slate Waste Material in the UK. *Proceedings of Institution of Civil Engineers: Waste and Resource Management*, 163, 9-15.

Pallasmaa, J. *Hapticity and Time*. RIBA Discourse Lecture, 1999 London. RIBA.

Perez, A. 2010. *AD Classics: Walt Disney World Swan and Dolphin Resort / Michael Graves* [Online]. Available: <https://www.archdaily.com/64270/ad-classics-walt-disney-world-swan-and-dolphin-resort-michael-graves> [Accessed 22 July 2019].

Pevsner, N. 1979. *A History of Building Types*. London: Thames and Hudson.

Philippou, S. 2010. Made of Stone and Water, for the Human Body. *360° Architecture* [Online]. Available: <https://www.greekarchitects.gr/en/degrees/made-of-stone-and-water-for-the-human-body-id2843> [Accessed 22 July 2019].

Pickard, Q. 2002. Libraries and Learning Resource Centres. *The Architects' Handbook*. Malden: Blackwell Science.

Plummer, H. 2016. *The Experience of Architecture*. London: Thames & Hudson Ltd.

Prizeman, O. 2011. Typology: Libraries. *Architectural Review* [Online]. Available: <https://www.architectural-review.com/essays/typology/typology-libraries/8621638.article> [Accessed 2 March 2019].

Relph, E. C. 1976. *Place and Placelessness*. London: Pion.

Ruskin, J. 1892. The Nature of Gothic. *The Stones of Venice*. Hammersmith: Kelsonscott Press.

Scruton, R. 1979. *The Aesthetics of Architecture*. London: Methuen & Co. Ltd.

Scully, V. 1962. *Louis I. Kahn*. New York: George Braziller.

Thiis-Evensen, T. 1987. *Archetypes in Architecture*. Oslo Oxford: Norwegian University Press

City of Tshwane 2005. *Proposed Tshwane Open Space Framework*. Gauteng Department of Agriculture Conservation and Environment. Pretoria: City of Tshwane.

City of Tshwane 2017. *Regional Spatial Development Framework: Region 3*. Gauteng Department of Agriculture Conservation and Environment. Pretoria: City of Tshwane.

Verschaffel, B. 2009. Semi-public Spaces: The Spatial Logic of Institutions. In: R. Geenens, R. T. (ed.) *Does Truth Matter? Democracy and Public Space*. 1 ed. Netherlands: Springer.

Wrede, S. 1980. *The Architecture of Gunnar Asplund*. Cambridge, Massachusetts: The MIT Press.

Zumthor, P. 2006. *Atmospheres*. Basel: Birkhauser.

Zumthor, P. 2013. *Presence in Architecture, Seven Personal Observations*. Tel Aviv University: David Azrieli School of Architecture.

Zumthor, P. 2014. Therme Vals, Graubunden 1990-1996. In: Durisch, T. (ed.) *Peter Zumthor 1985-2013*. Zurich: Verlag Scheidegger & Spiess AG.



LIST OF REFERENCES



In accordance with Regulation 4(c) of the General Regulations (G.57) for dissertations and theses, I declare that this thesis, which I hereby submit for the degree Master of Architecture (Professional) at the University of Pretoria, is my own work and has not previously been submitted by me for a degree at this or any other tertiary institution.

I further state that no part of my thesis has already been, or is currently being, submitted for any such degree, diploma or other qualification.

I further declare that this thesis is substantially my own work. Where reference is made to the works of others, the extent to which that work has been used is indicated and fully acknowledged in the text and list of references.

PAOLO KIRSTEN
