

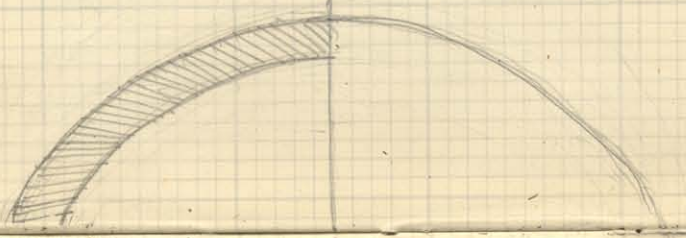
Reveal

Boldered Yonnors

Moulded Surround

← 14" \* 14" \* 14" \* 6" →

Section through Arch Surround.



5/8 Spherical dome

Tomato Dome

pendentive

8"

13"

6"

9"

Boldered Yonnors

Moulded Surround

Corbelled squinch

14" 14" 14" 6"

Salter courses ready from 8" to 9"

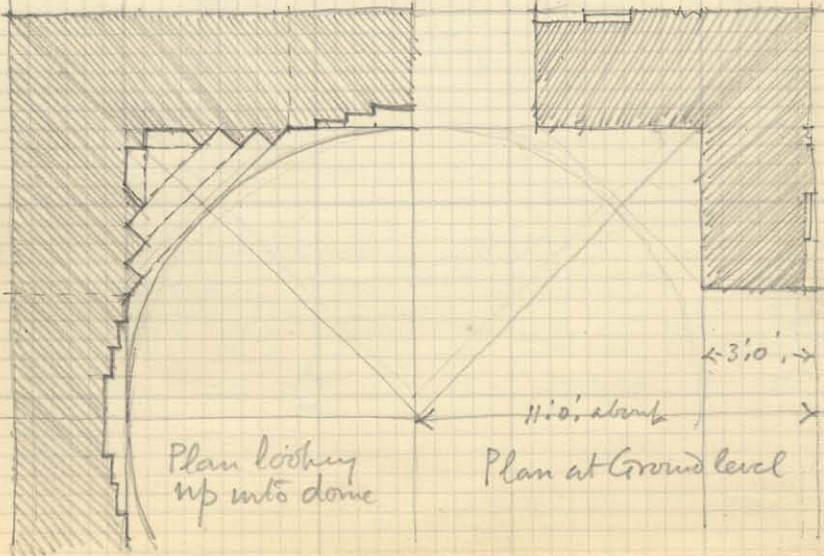
Half Section

Ground level

Half Elevation

about square to first story cornice

ETW 5/15/28



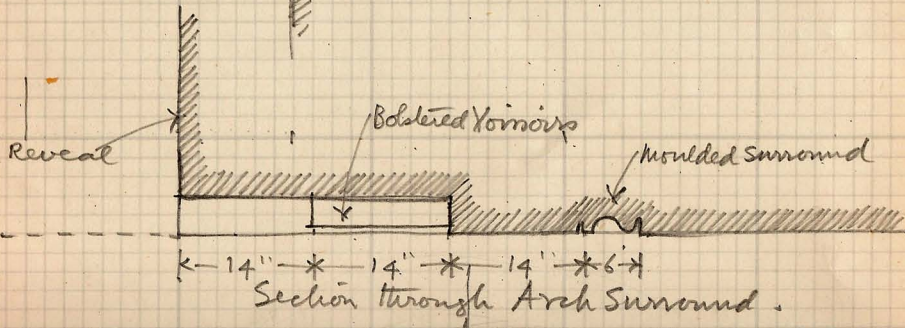
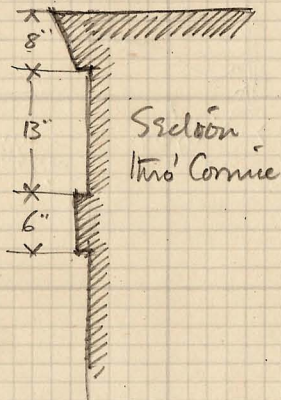
Plan looking up into dome

Plan at Ground level

Palermo June 1931.

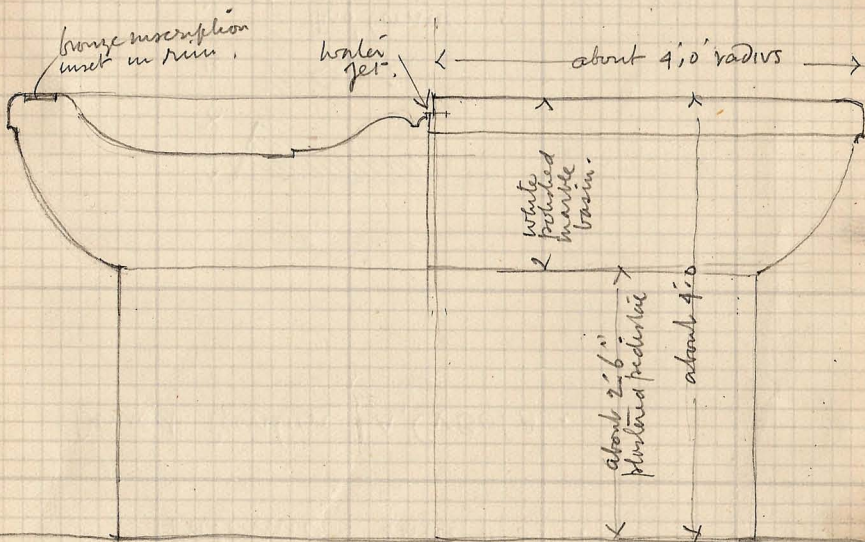
Domed Pavilion LA, CYBOLA.

ETN 575 27



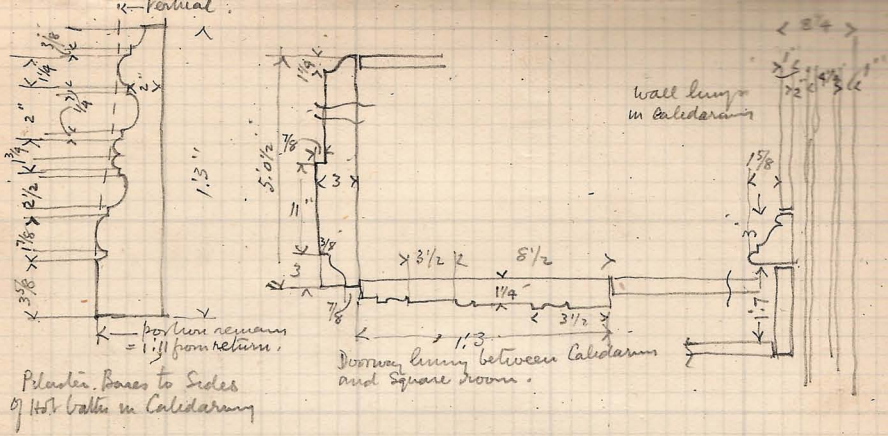


ETW SKS 28



LABRUM in Women's Caldarium  
Baths of the Forum, POMPEII

June 1951.

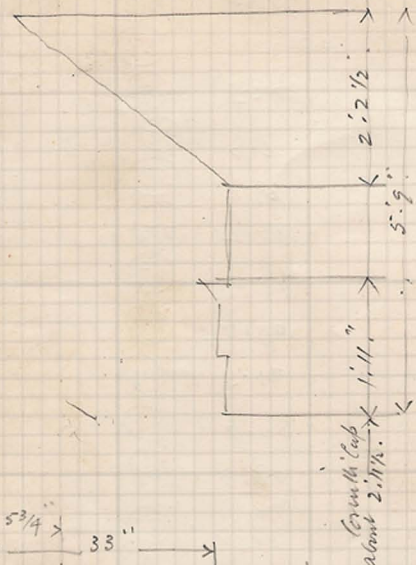


ETN SKS 29

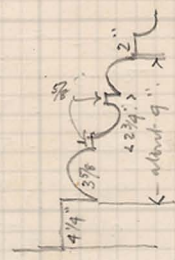


DM SAS 30

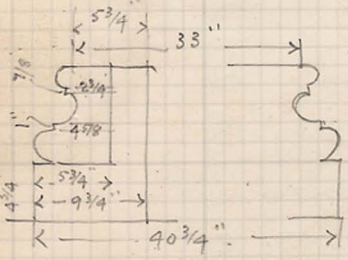
7 Vigilarium



Circumferential Col: Mammals  
 Large cols = 7.9 1/4 (+ 1/2 diam)  
 = 2.5 7/8" diam.  
 Small cols = 6.10 3/4"  
 = 2.2 5/8" diam.



Small Col: bases

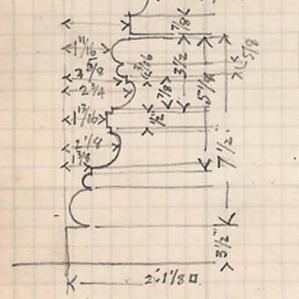


"Ante" Piloni bases.

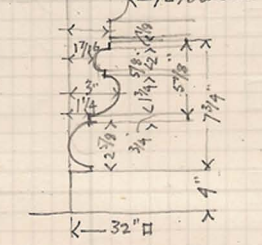
Square room  
 Floor to beam ceiling = 19:0  
 Floor to Top. boundary cornice = 19:3 + 3:1 1/2

Segmental Room -  
 Floor to top of Cornice Caps = 21:9  
 Floor to middle Col: base = 3:0.

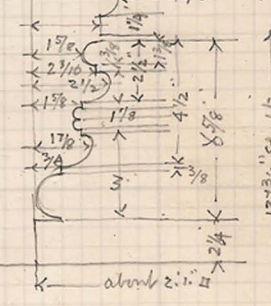
OVAL ROOM



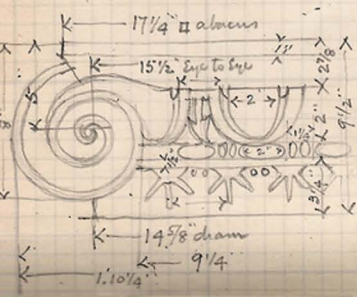
SEGMENTAL ROOM.



CALIDARIUM.

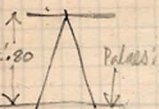


13 1/4" St. aft.  
(Apotheca to apoth.)



Levels. OSTIA, BATHS.

1ST READING.



- ① = 9.18    ③① 5.56
- ② = 8.12    ③② 8.24
- ③ = 12.84    ③③ 5.58
- ④ = 12.24    ③④ 5.00
- ⑤ = 5.04    ③⑤ 5.06
- ⑥ = 5.08    ③⑥ 4.60
- ⑦ = 5.28    ③⑦ 5.20
- ⑧ = 5.15    ③⑧
- ⑨ = 7.50
- ⑩ = 5.02
- ⑪ = 7.20
- ⑫ = 7.76
- ⑬ = 4.80
- ⑭ = 11.40
- ⑮ = 4.90
- ⑯ = 6.46
- ⑰ = 4.66
- ⑱ = 4.86
- ⑲ = 4.90
- ⑳ = 4.98
- ㉑ = 5.12
- ㉒ = 4.60
- ㉓ = 4.32
- ㉔ = 7.48
- ㉕ = 7.68
- ㉖ = 4.8
- ㉗ = 5.24
- ㉘ = about 12.00
- ㉙ = 10.46

2ND READING.

- ① 11.84
- ② 11.60
- ③ 10.44
- ④ 10.90
- ⑤ 11.30
- ⑥ 11.00
- ⑦ 12.18
- ⑧ 1.74.
- ⑨ 5.48
- ⑩ 5.92
- ⑪ 4.30.
- ⑫ 4.48
- ⑬ 4.34
- ⑭ 4.76
- ⑮ 4.27
- ⑯ 4.68
- ⑰ 5.45

{slight  
above  
E.L.}

3rd Reading.

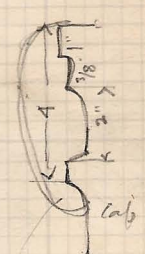
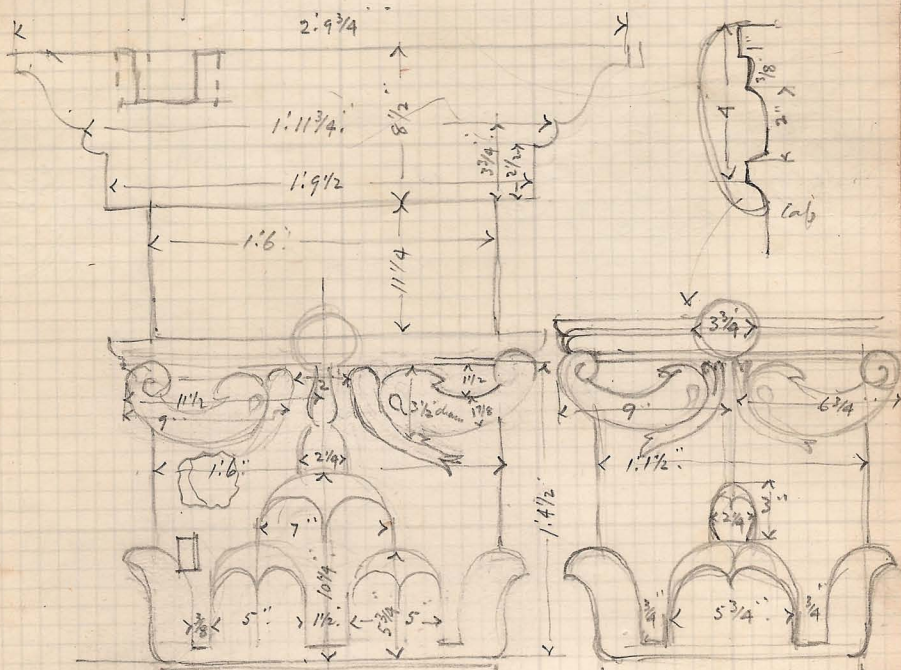
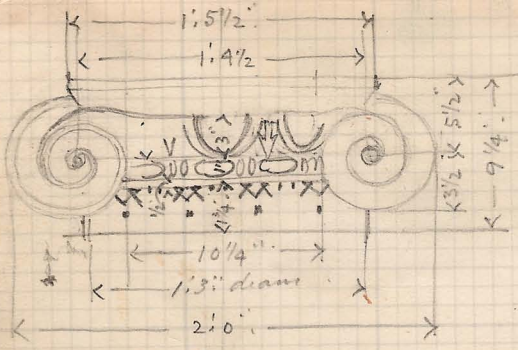
- ① = 12.50
- ② = 12.90
- ③ = 12.88
- ④ = 7.92.
- ⑤ = 8.02
- ⑥ = 7.88

ETN SLS 31

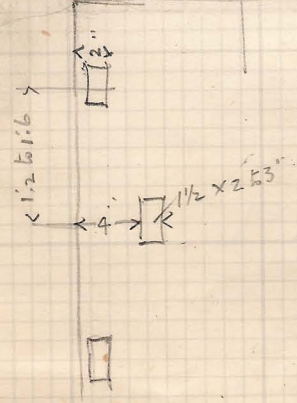
(Read level with  
modern copying)



Some capment to  
Frond above.



DN 515 32

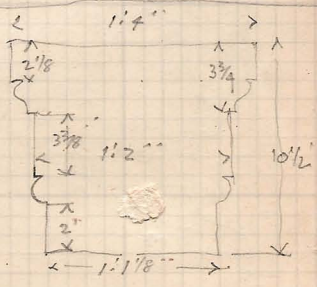
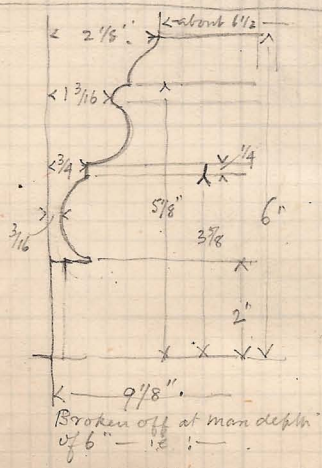
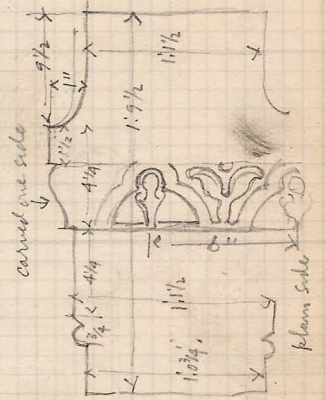
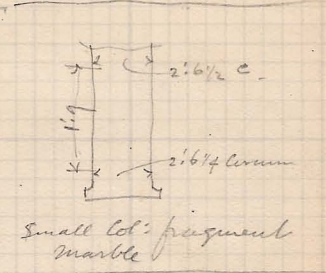
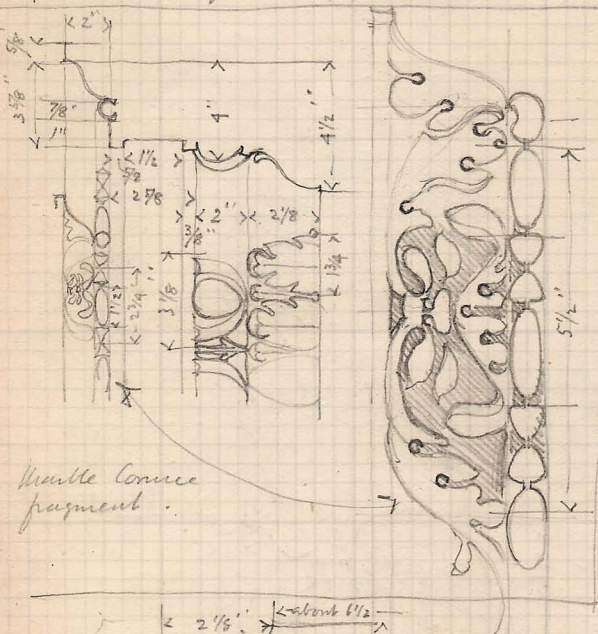
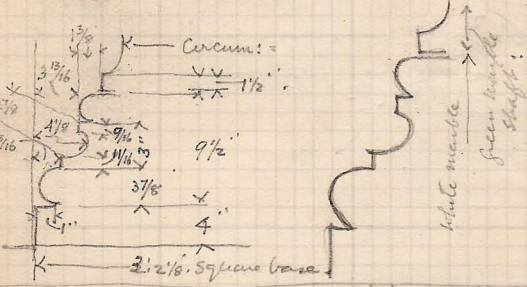








Cols: in vestibule at North Entrance near latrines

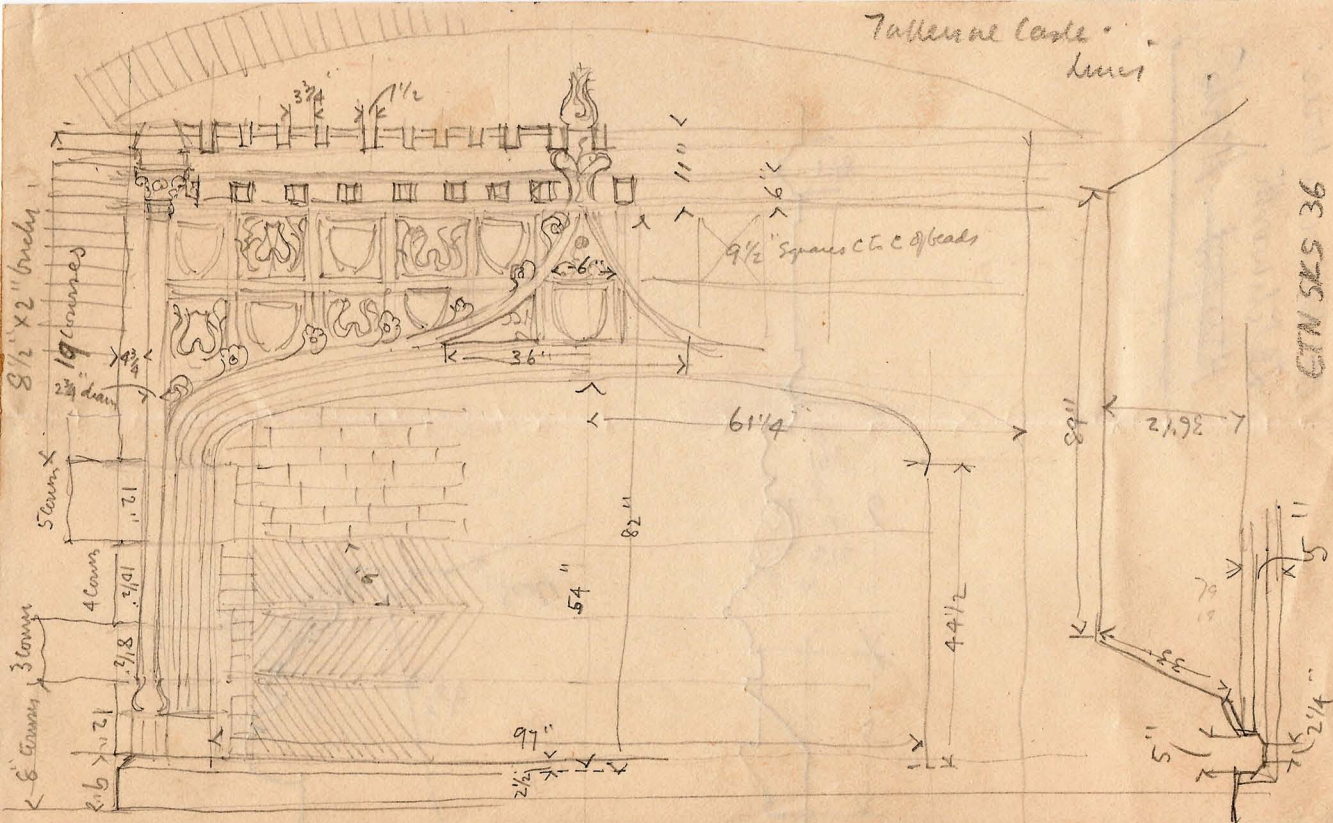


Plain both side  
 Inscription one side  
 Plain 50 ft.





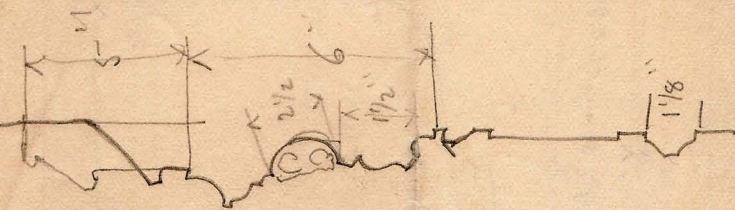
Tullahoma Castle  
Liner



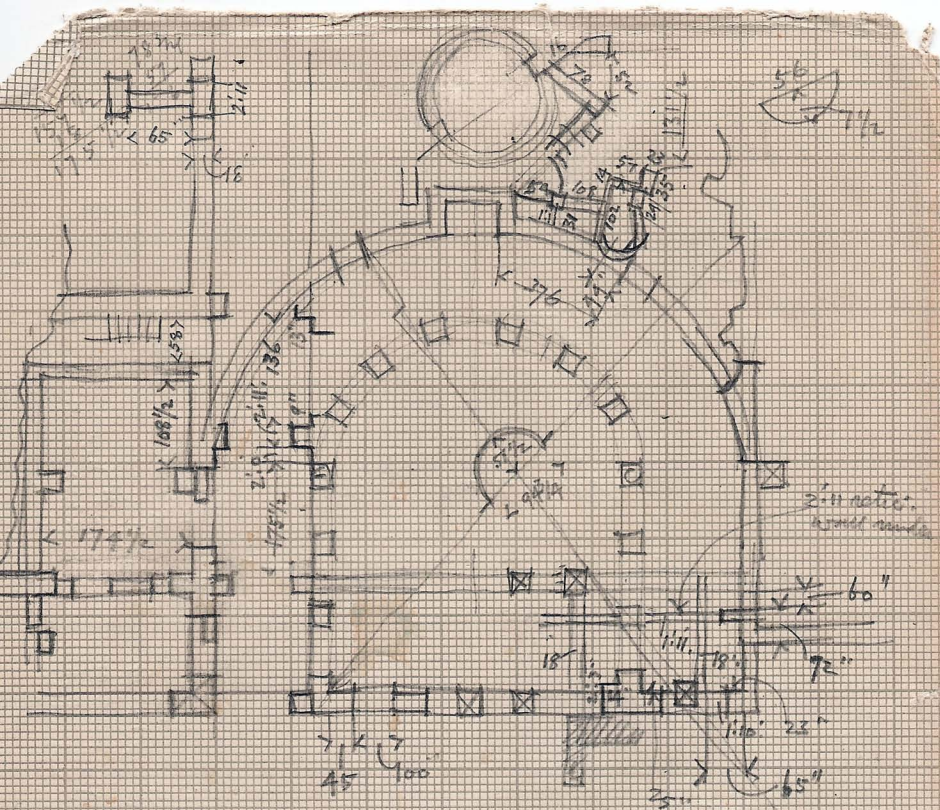
PTN 575 N19  
36

ETW SKS 37

Mr William Wier.  
Letchworth.  
Hareford - Herts







☒ = 31'4"

47 3/4

14.7

511.4

100  
25  
4

150  
515  
665  
815  
965

150  
515  
665  
815  
965

150  
515  
665  
815  
965

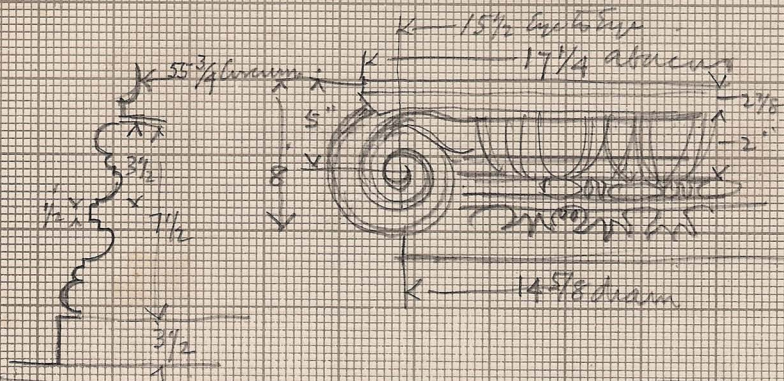
83 575 N13



Oral Room

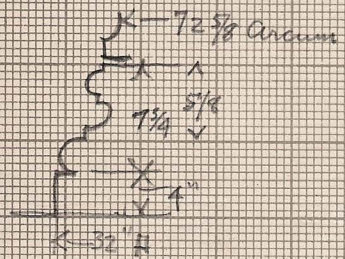
Floor to Column base 80" raised 66"

Bot. diam: Col: 55 3/4"



Segmental room

Floor to Col base = 2' 11"



Corinth

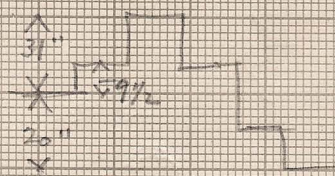
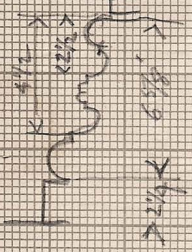
Segmental Room

79  
52  
157

Calidarium

56 1/4" above floor to Col base = 62 1/2"

137 3/4" depth to epling





S. A. Arch. Record

---

1939 Jan Feb (Mar) Apr May June July Aug ~~Sept~~

1940 Oct May June July Aug Sept Oct Nov Dec

1941 Jan Feb March Apr ~~May~~

1942 Full ✓

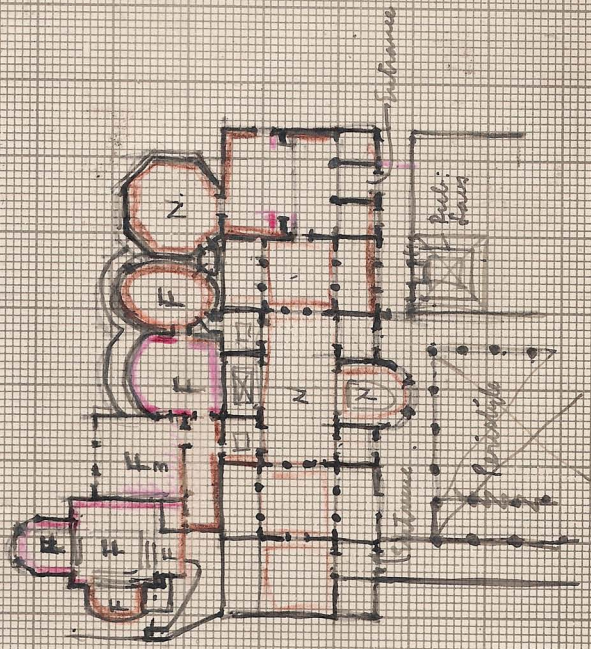
1943 - No July numbers

1944

1936 (May)

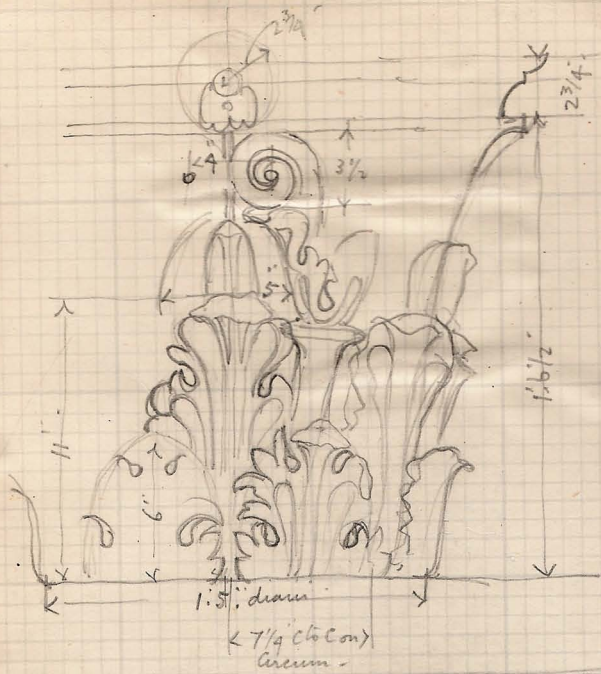
1937 (April)

1938 Jan. June, July, Aug. Sept. Nov. Dec.

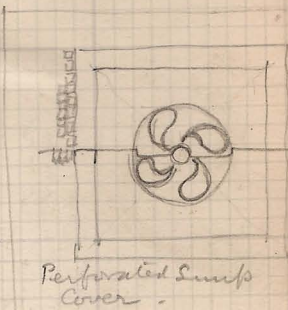


  
 1. 2. 3. 4.  
 5. 6. 7. 8.



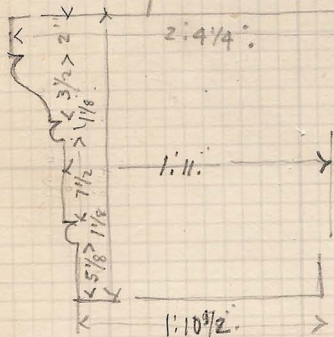


Col: Cap: Standing  
in Vestibule

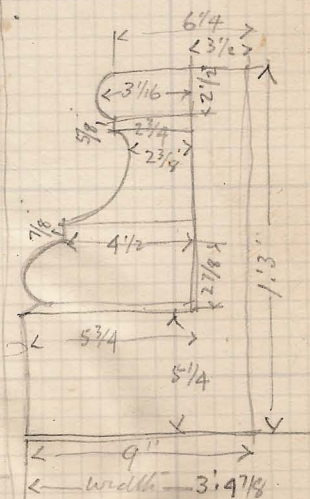


Fragments in Frigidarium - Rooms

(1) First Bay on East near Vestibule

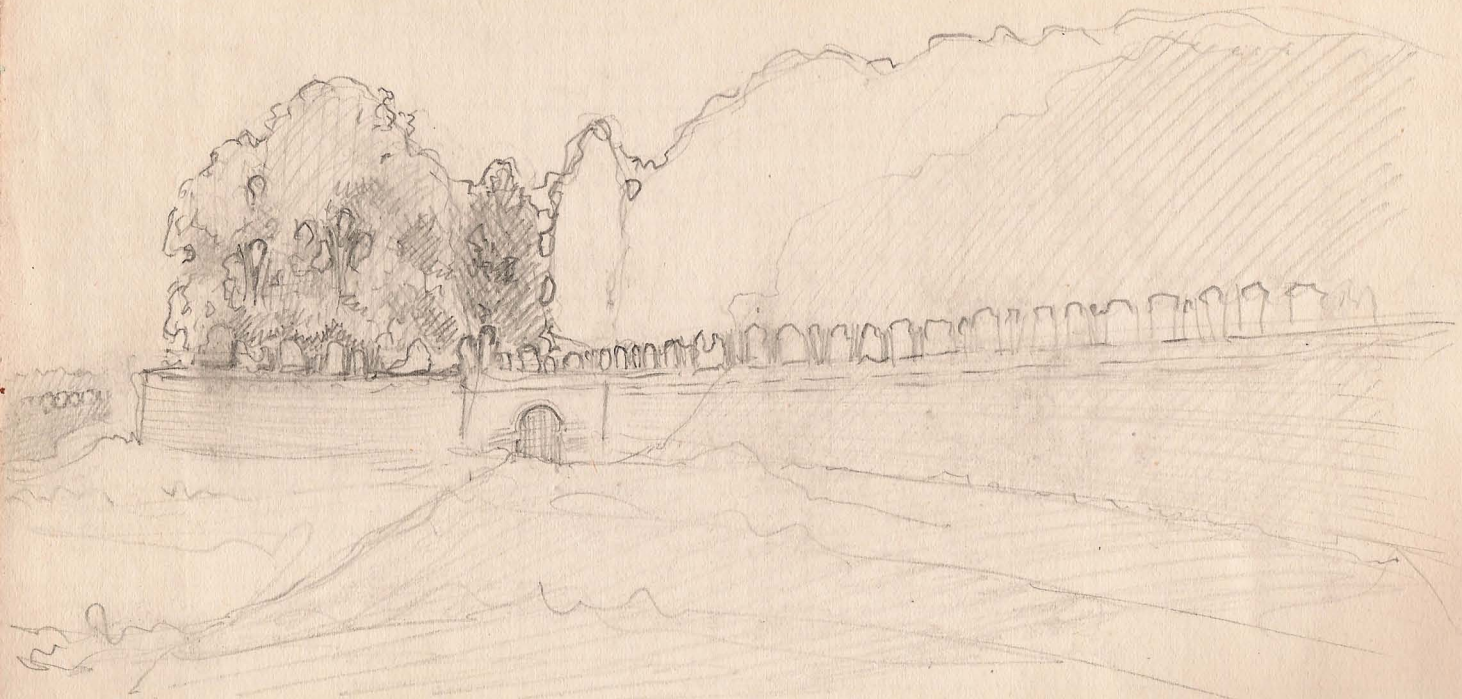


Architrave plain both sides  
+ plain soffit apparently unfinished.



Columns (smaller) before measured  
= 6.10 1/2 Column @ 1.9 off apophyse

GTN sks 43



Lucca 1930