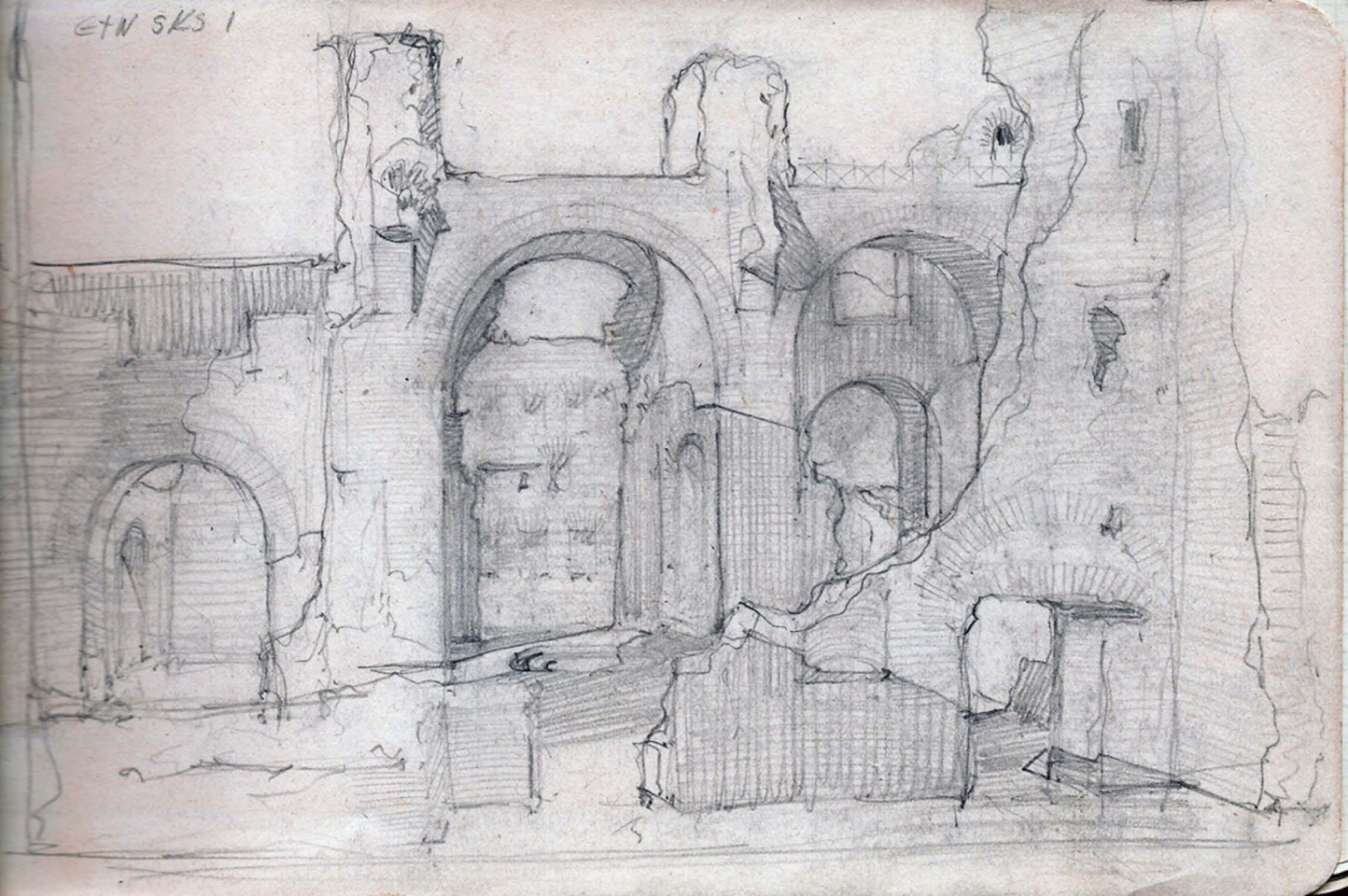
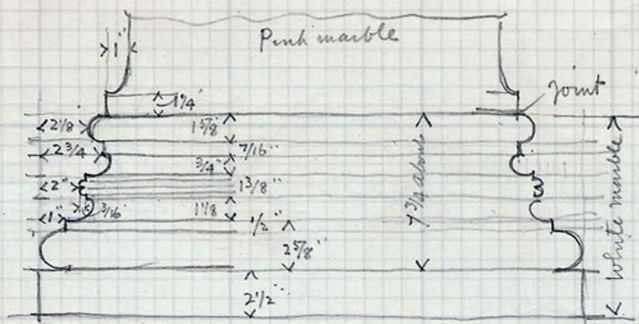
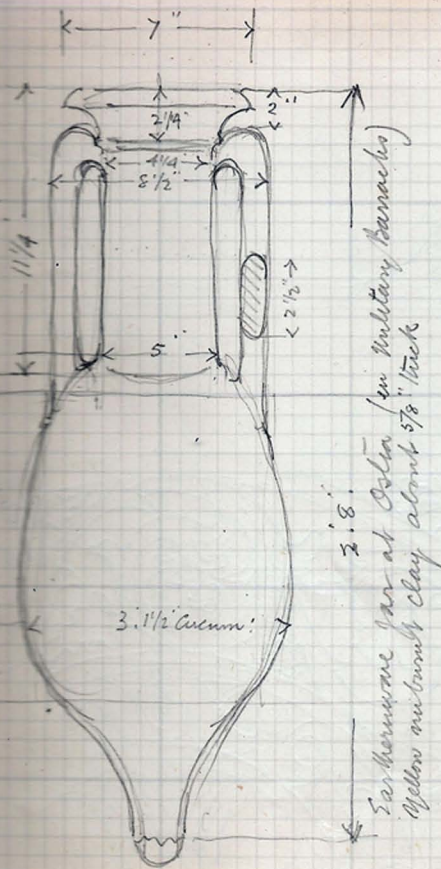


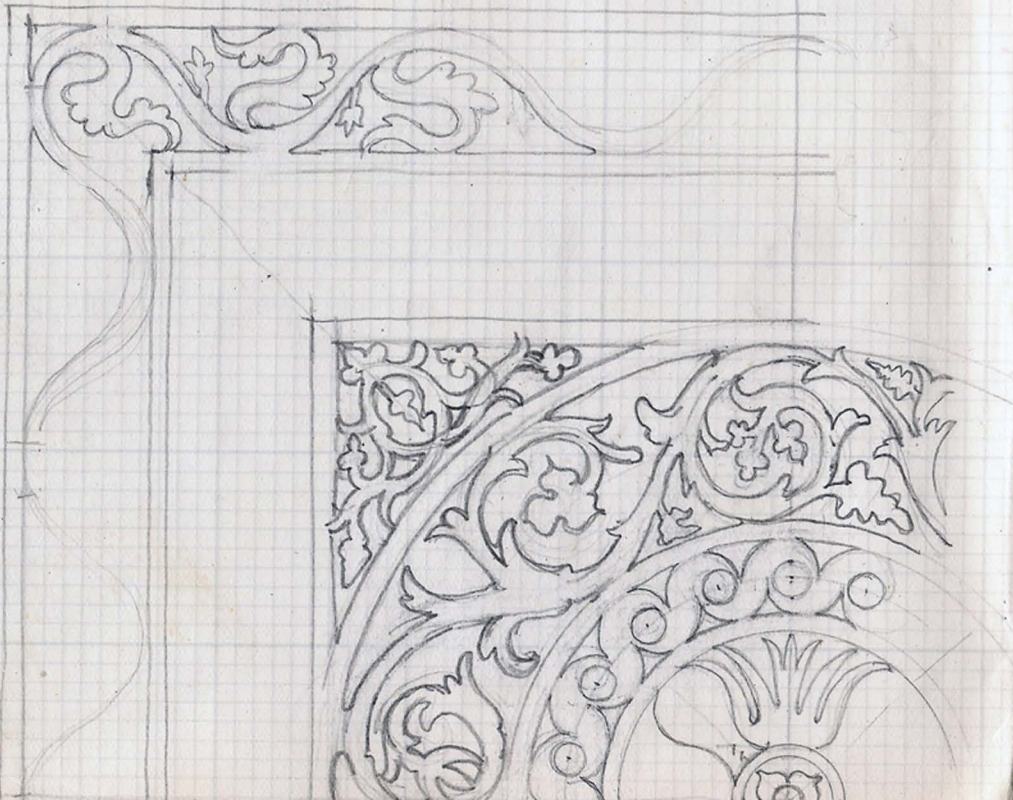
ETN SKS 1



OSTIA. 3rd AGOSTO, 1930

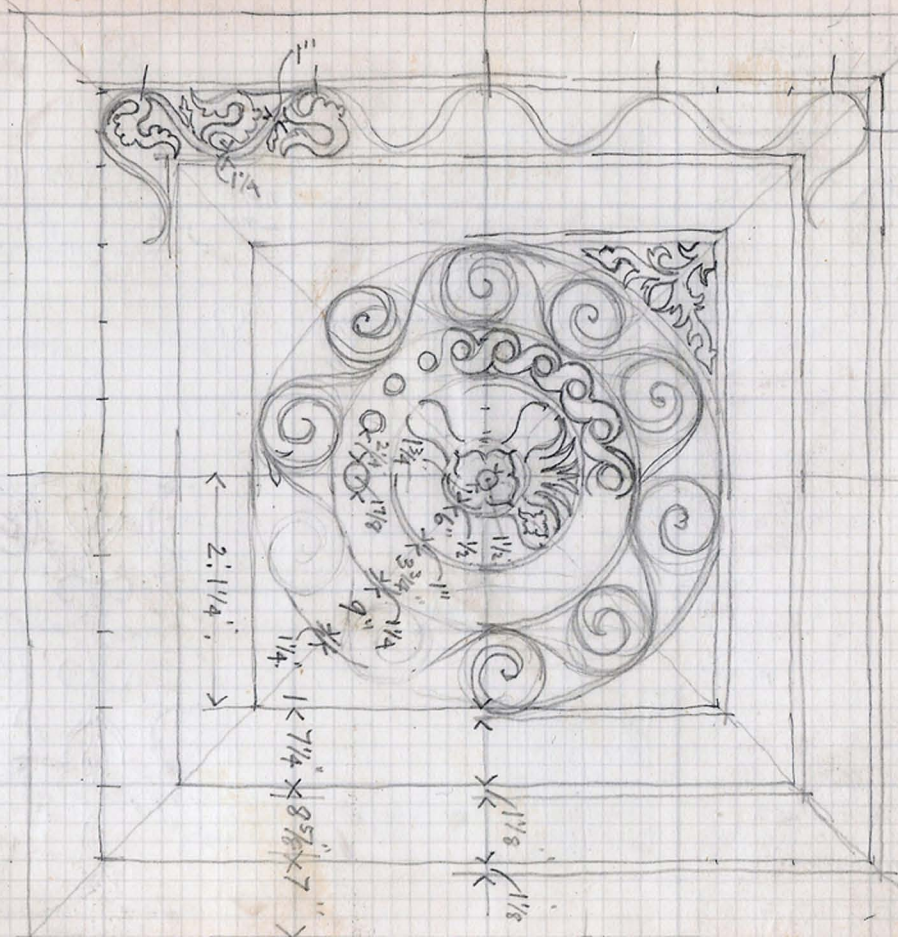


marble bases on West side of Barracks.



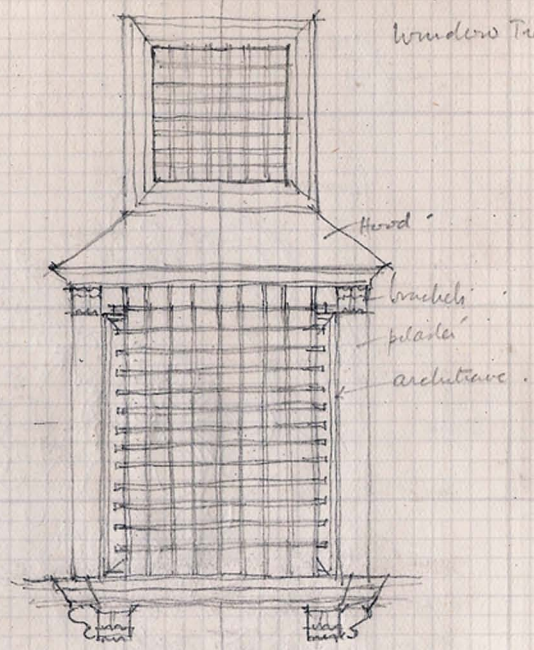
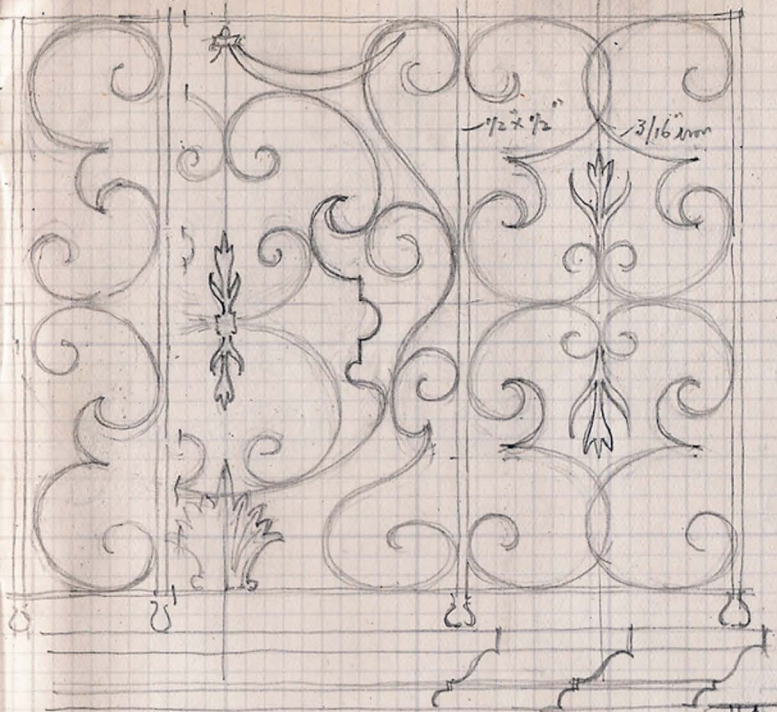
THE DUOMO, VCCA - AUG 1930

Details of mosaic panel in floor of nave in pink white and green marble

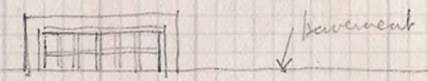
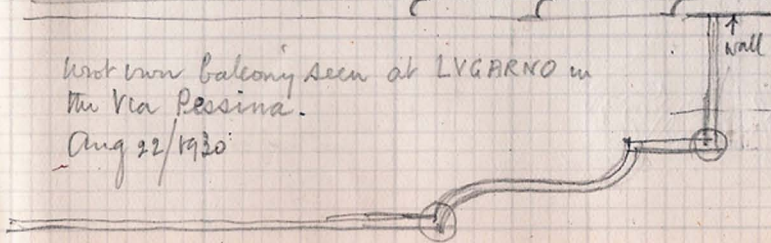


Lecca Aug 1930

Windows Treatment

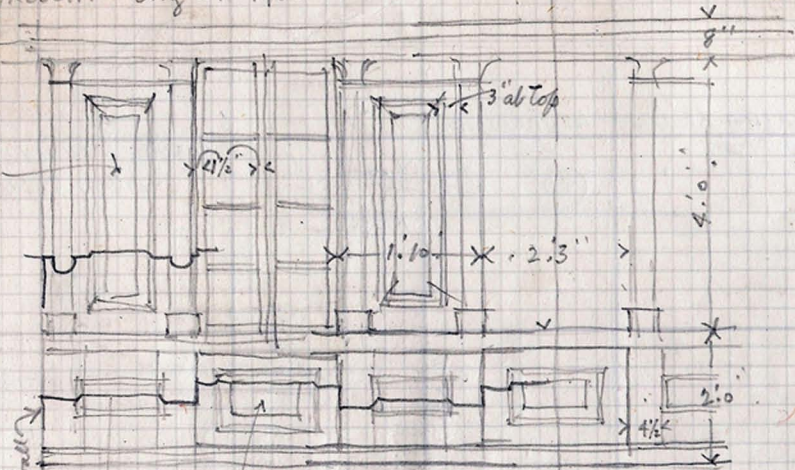


Work from balcony seen at LUGARNO in
the Via Pessina.
Aug 22/1930



BRESCIA - Aug 27th 1930

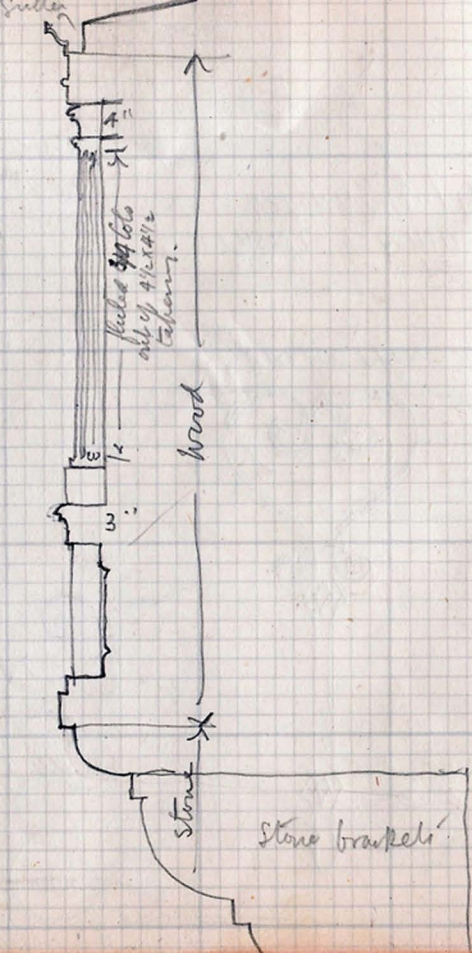
folded



Side wall

unfaded folded

Wooden propelling Covered way over old Gateway
 Arch in Via. Museo
 near Piazza Tito Spina.

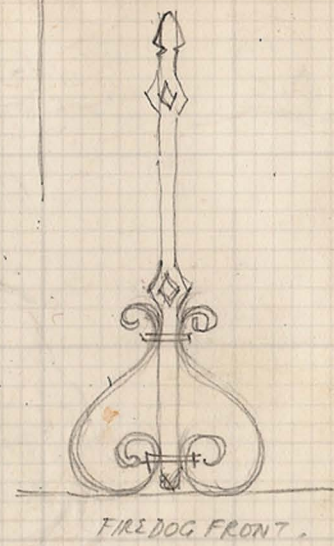
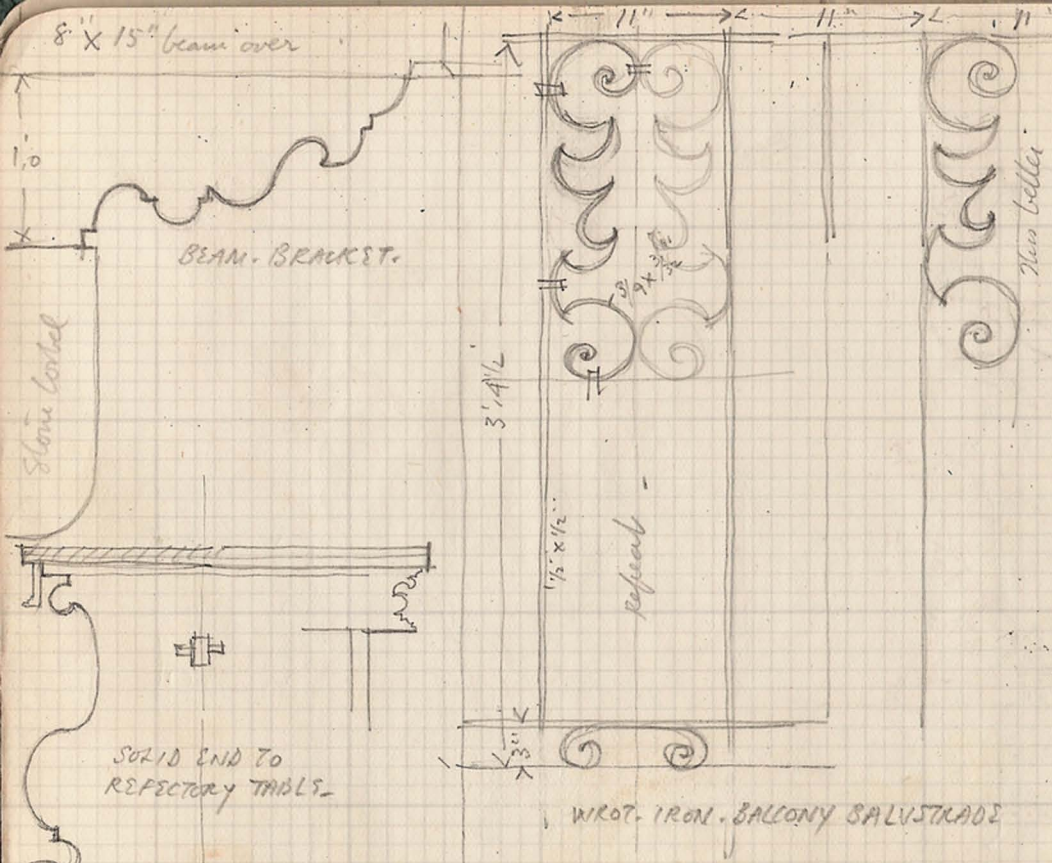


folded 4x6 logs
side of 4 1/2 x 4 1/2
columns.

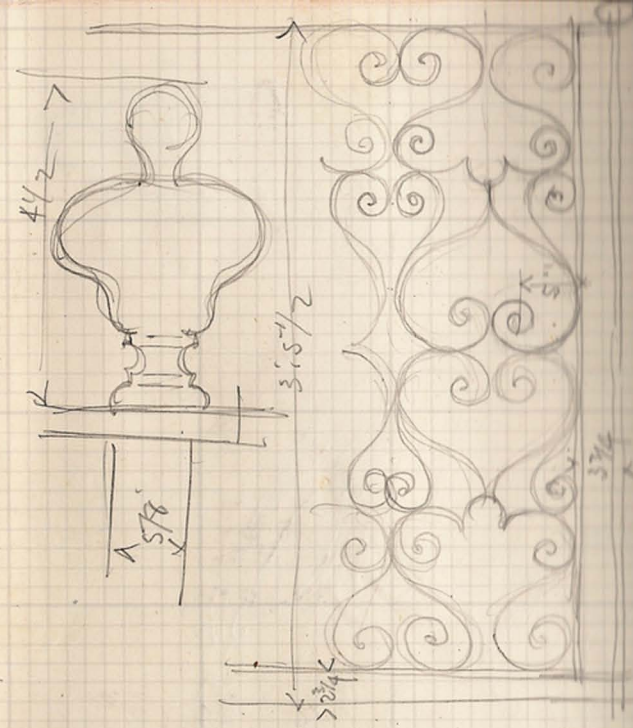
wood

stone

Stone bracket



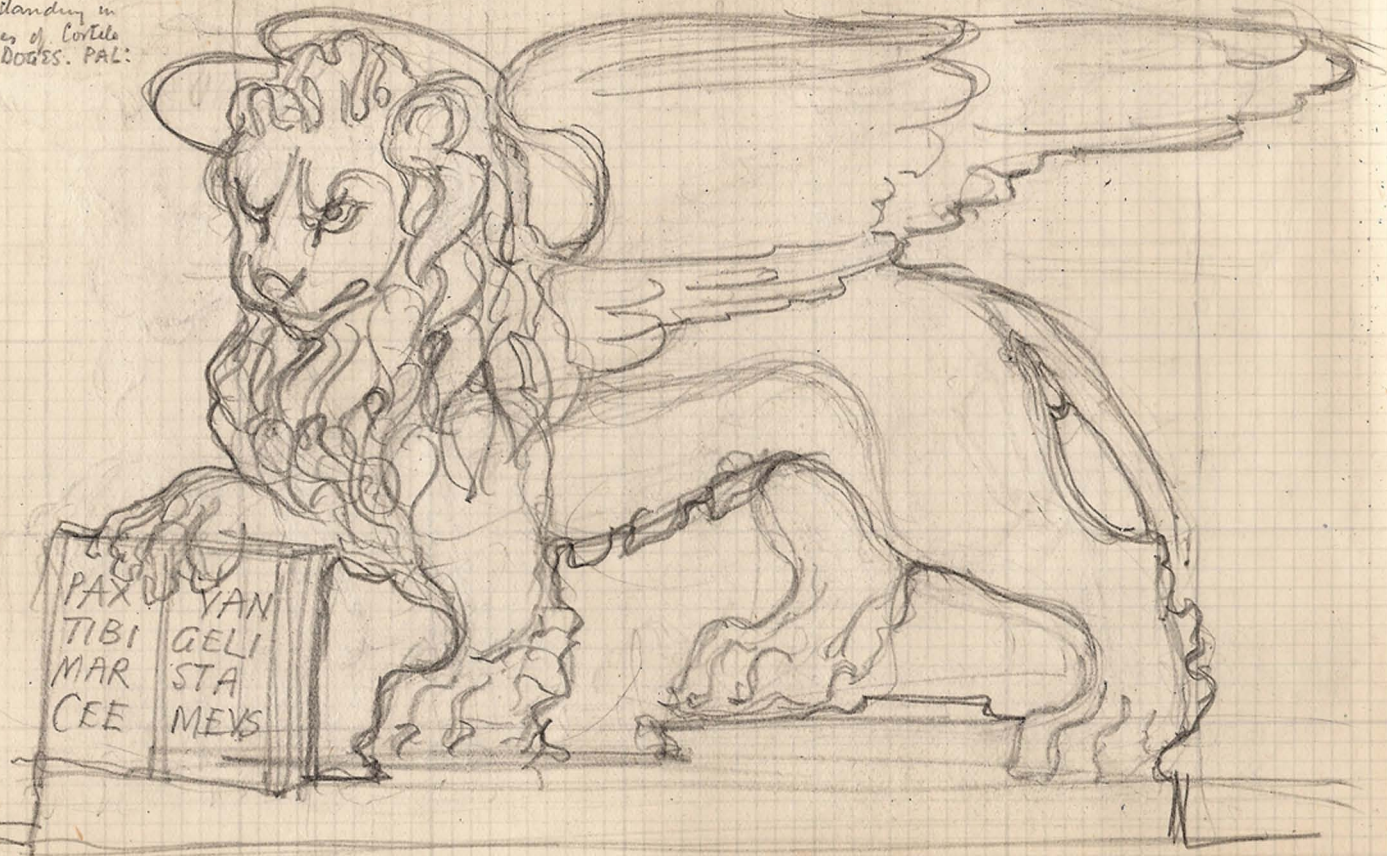
CASTEL VECCHIO
VERONA - Aug 1930



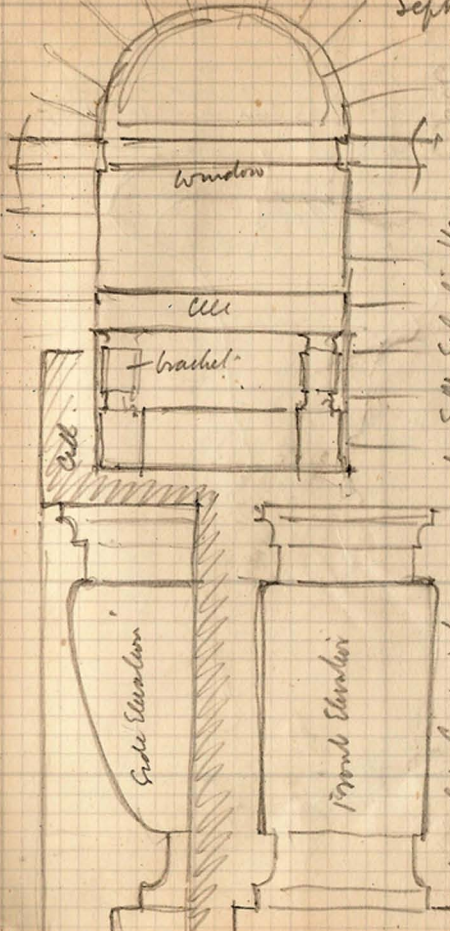
CASTEL VECCHIO VERONA -
Aug 1930

VENICE. SEPT. 1930.

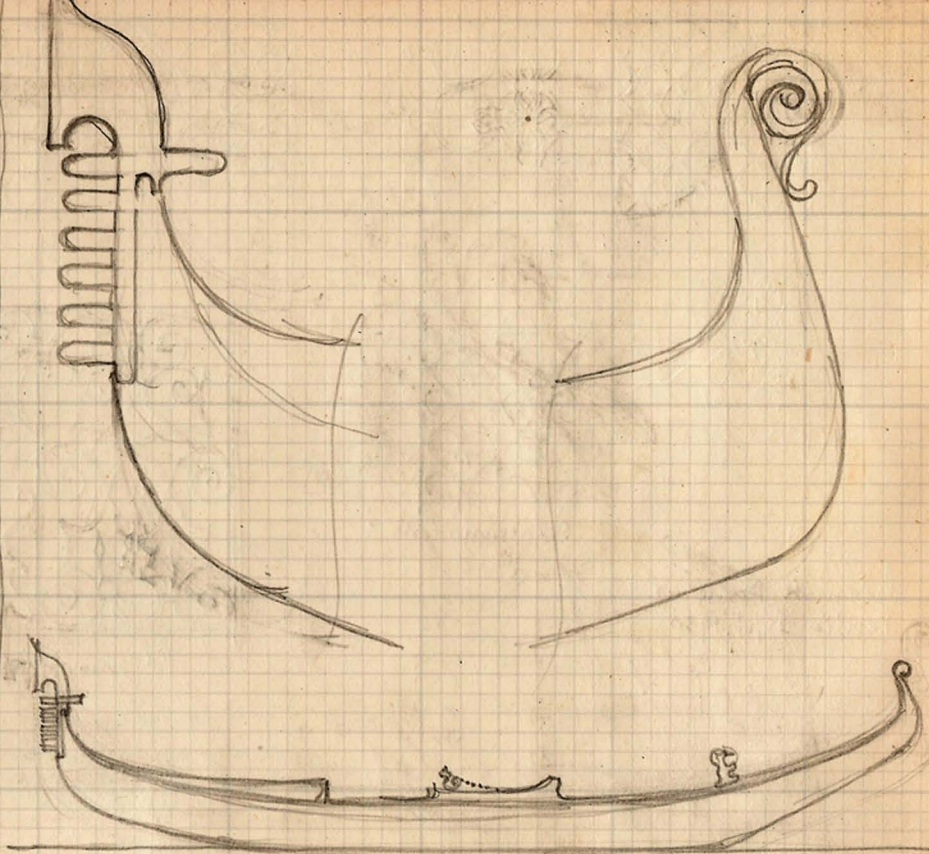
LION standing in
Arcades of Cortile
of the Doges. PAL.



Sept 19 30

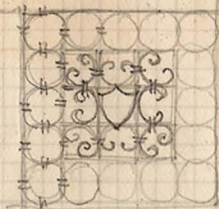
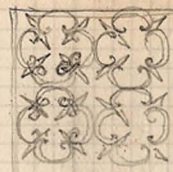
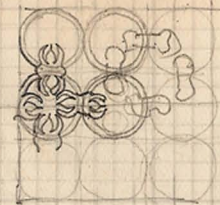
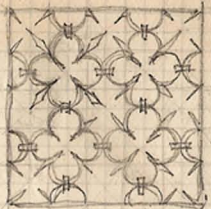


The Old Custom house built S.M. Schuler Venice
 Treatment of Cell brackets.

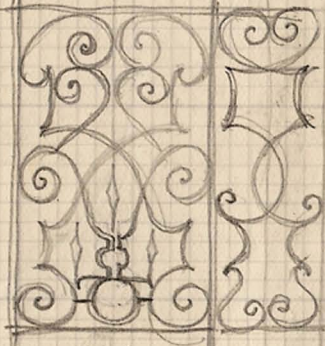


longer in center

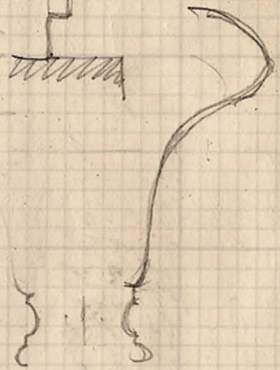
ETW
 CR 59



S. Zaccaria Gate



Pal. Gnamani



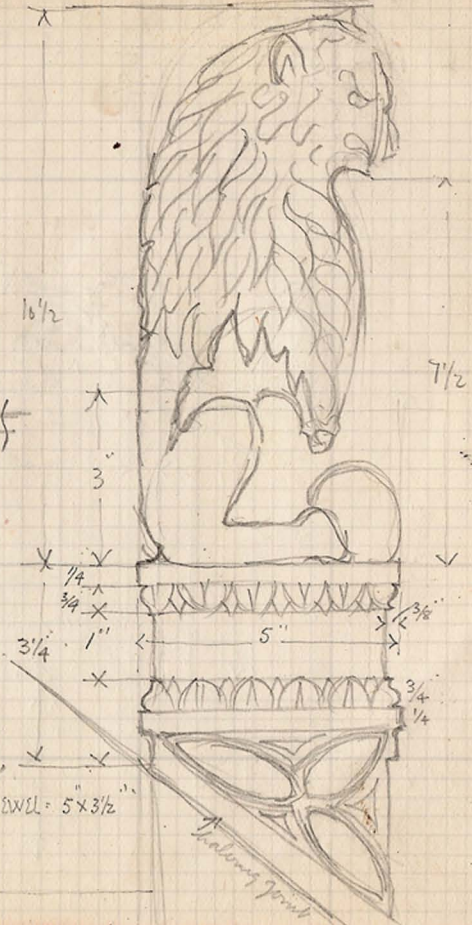
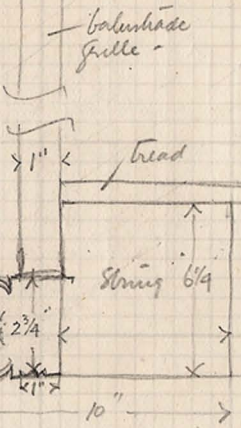
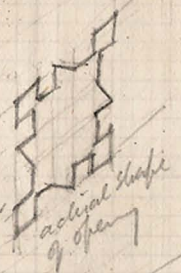
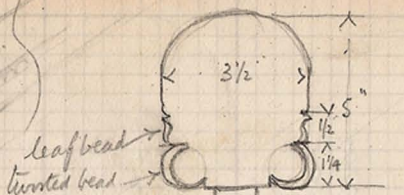
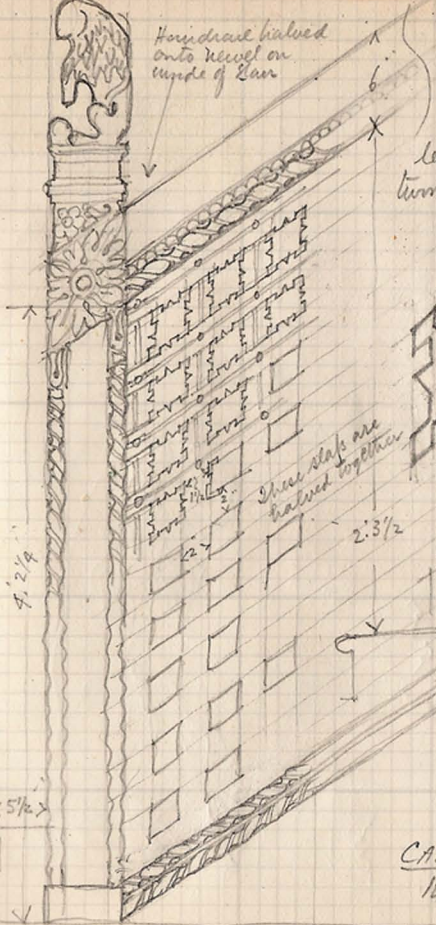
Ironwork Patterns
Venice Sept. 1930

ETN
SILS 10

September 1930

ETW
SKS
11

Handrail pivoted
onto newel on
inside of ban



Staircase about 4' 2" wide
Sides of Risers and Treads
are concealed by grille
& exposed thro' openings in same

CASA D'ORO VENEZIA.
14th Century Staircase.

NEWEL = 5 x 3 1/2"

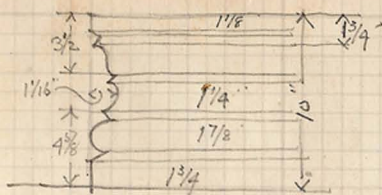
balustrade grille

Sept 1930

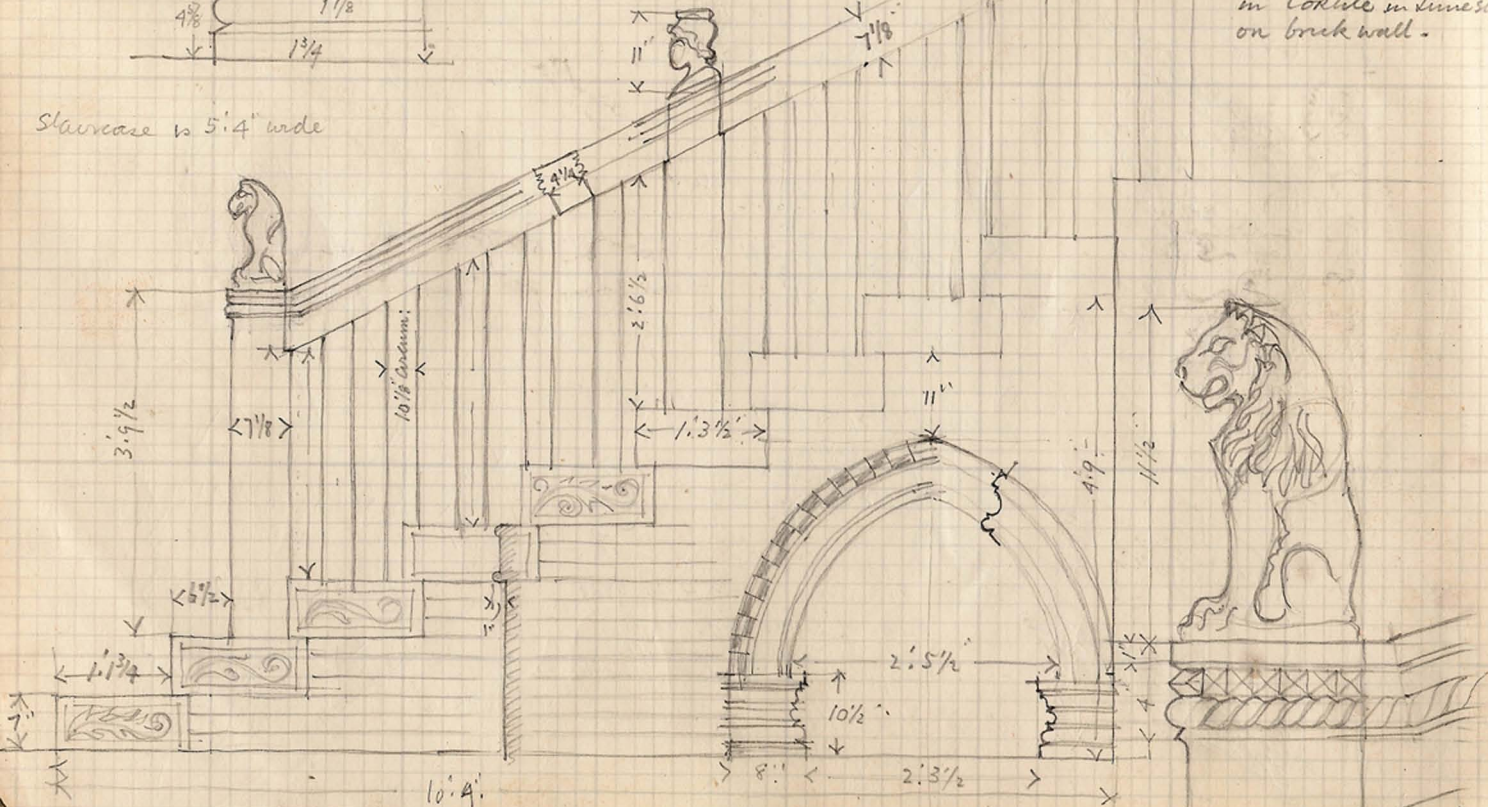
CA' D'ORO. VENICE.

External Staircase
in Cortile in limestone
on brick wall.

ETN
SLS 12



Staircase is 5' 4" wide



Sept 1930

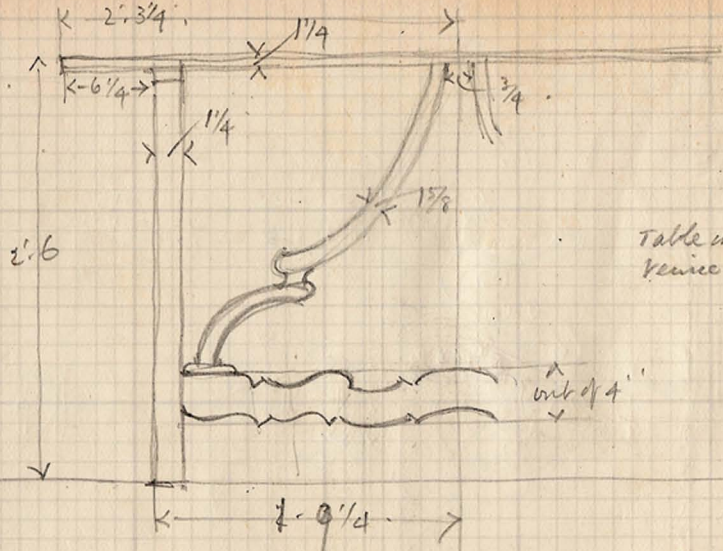
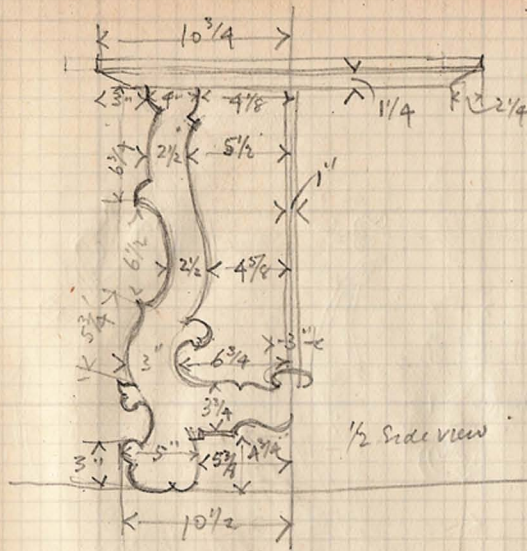


Table in CA'DORO Venice

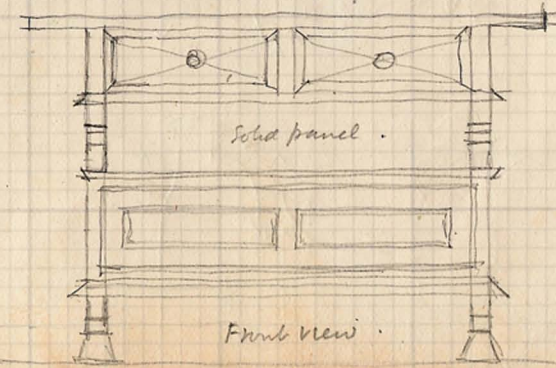
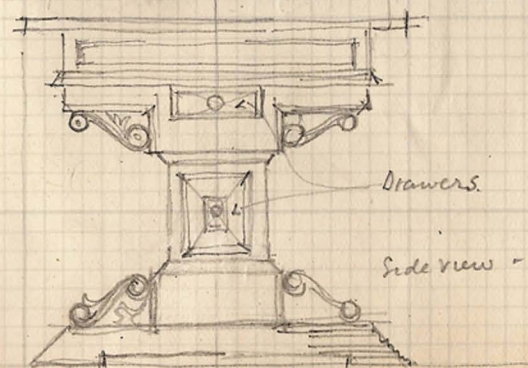


Table in Musso, CORN Venice.

ETW
SKS
13

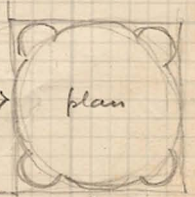
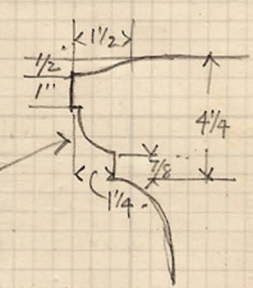
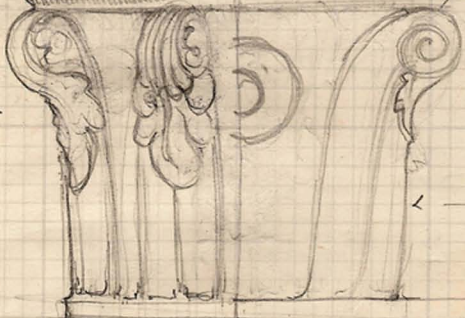
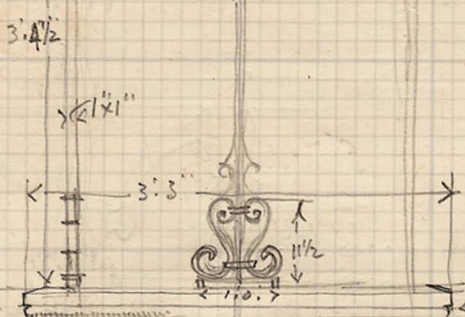
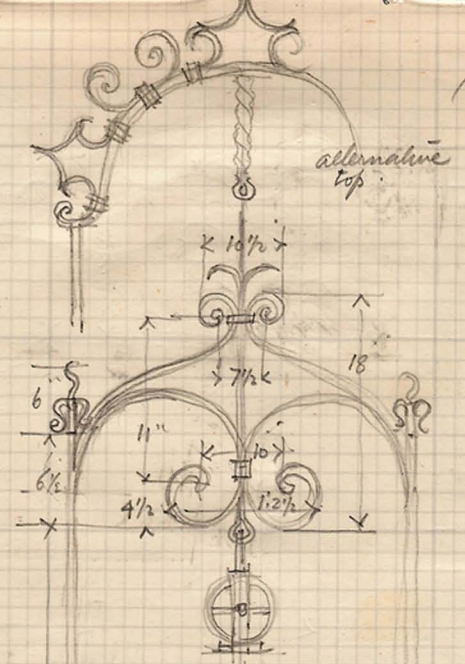
Sept. 1930.

PAL GRIMANI Venice
(antique shop)

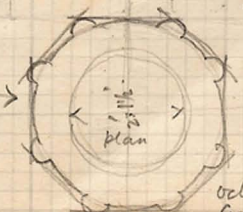
alternative
top

Stone Wellhead of the
typical kind found
in Venice, Vicenza and
Verona, with ironwork
above

ETN 525 14



Square on Circle.

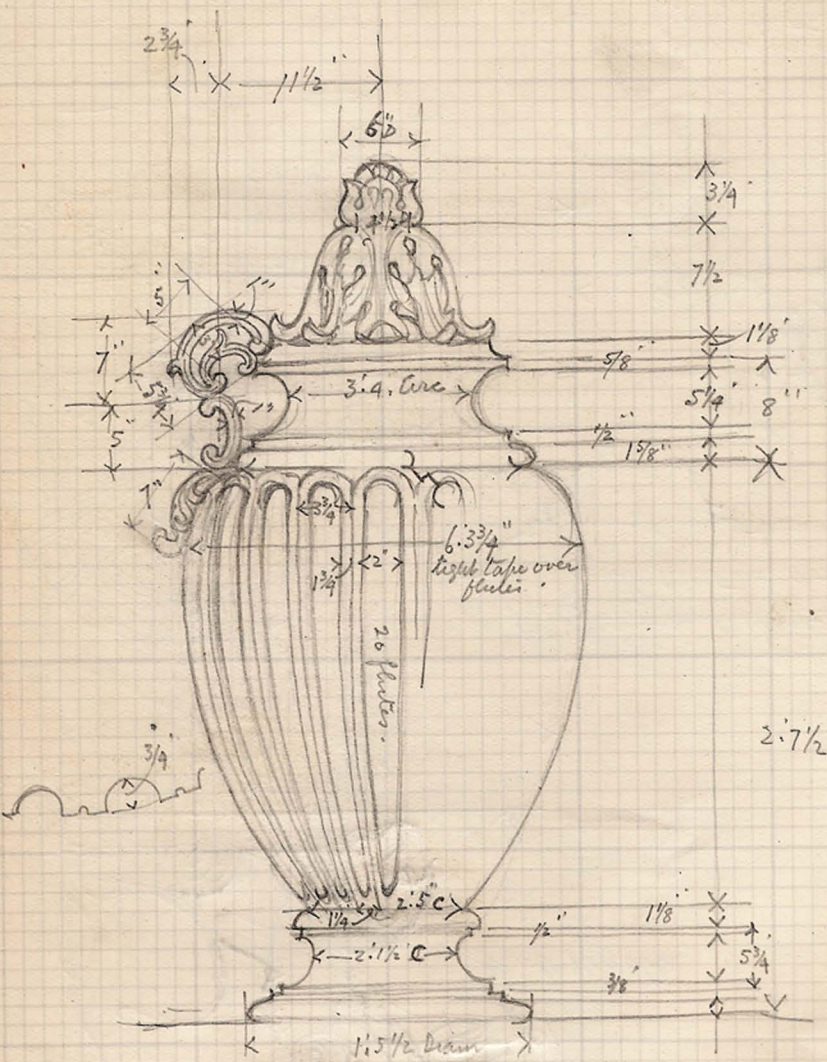


Octagon on Circle.

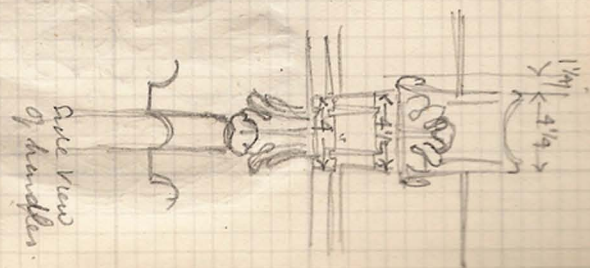
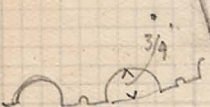
Sept: 1970

Pal: GRIMANI: Venice.
 (Antique Shop)
 Ornamental Urn in Limestone

ETW
 SKS 15



$2.7\frac{1}{2}$

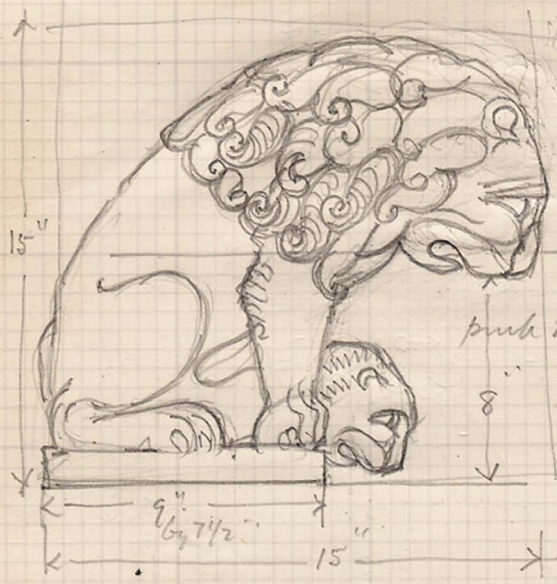


Side View
 of handles

Sept. 1930
 Pal Grimani Venice
 (Antique Shop)

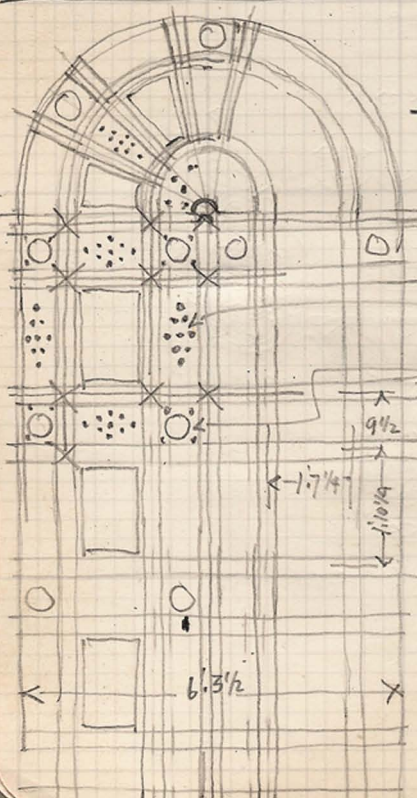
Seen carved out of
 pink marble.

{ This is typical of the
 kind used on the
 corners of balconies }

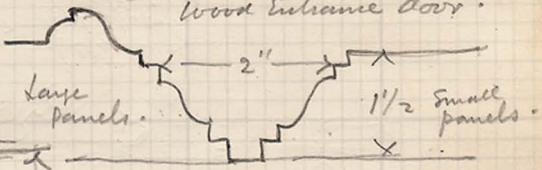


pink marble

STN 16
 SLS 16



Pal: Grimani Venice
 (Antique Shop)
 Wood Entrance door.



Large panels.

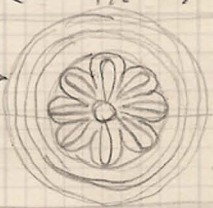
Small panels.

Bronze Slabs



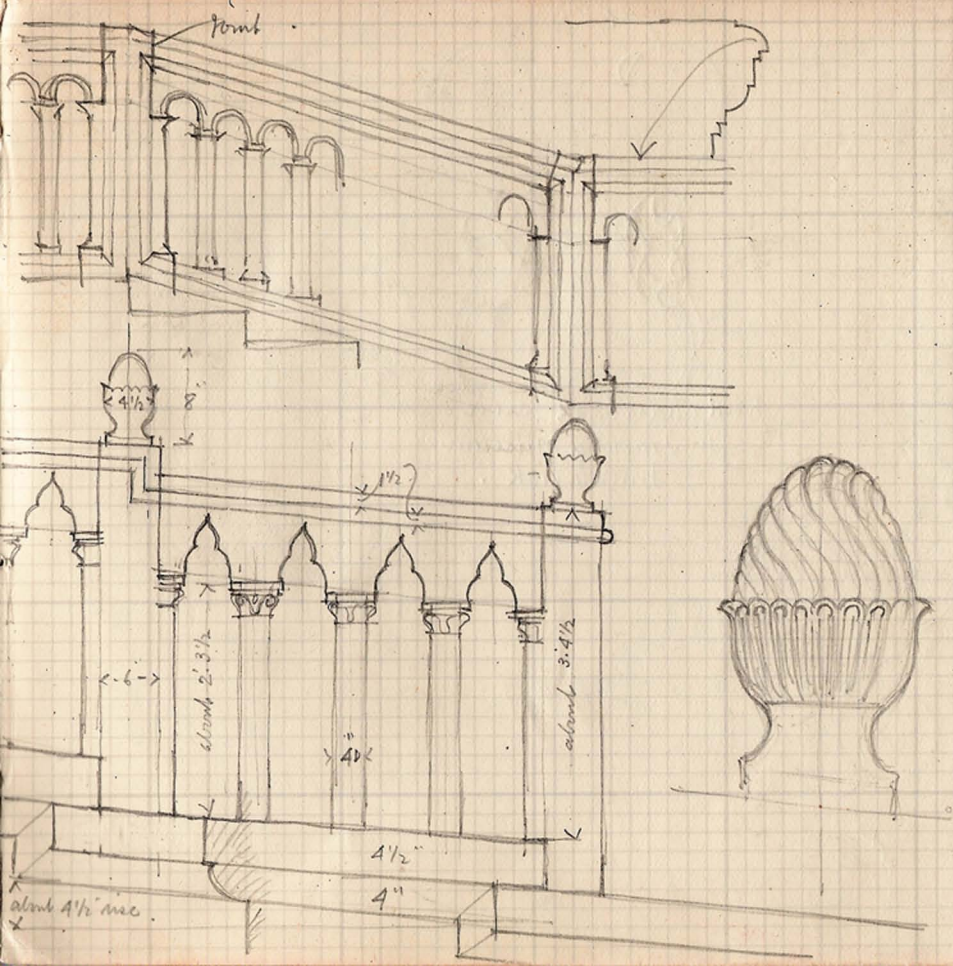
4 1/2

Bronze Bosses



With panel places are planted
 on face of heavy battens which
 show on inside.

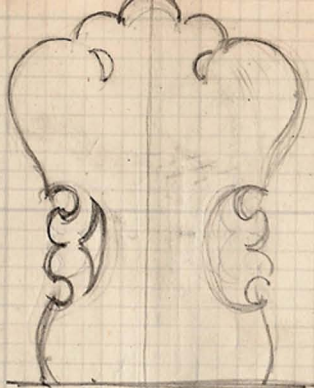
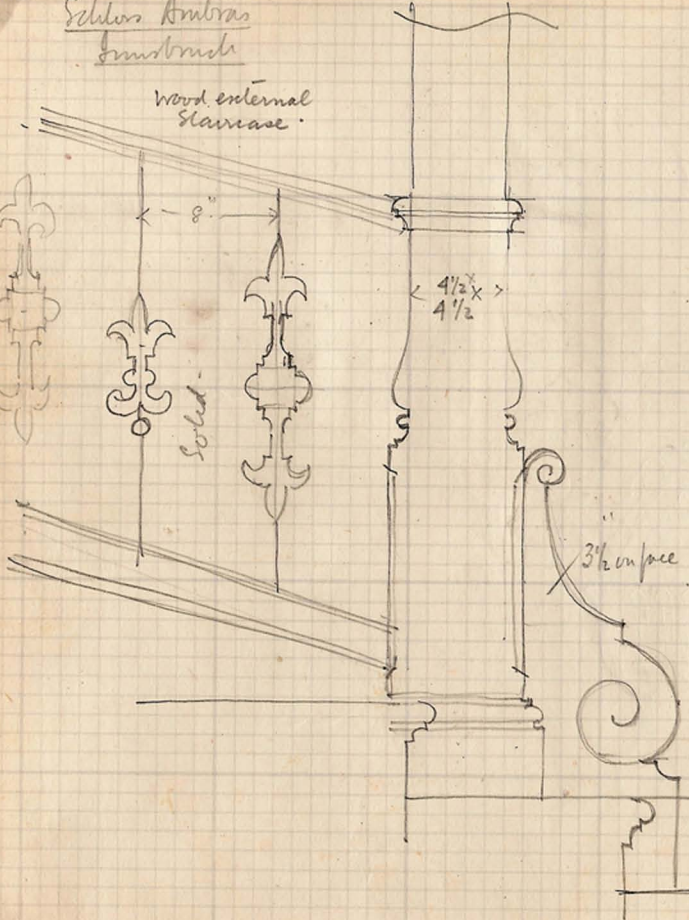
1 2 1/2
 1/2 panel



ETN
SLS
17

Schloss Ambras
Innsbruck

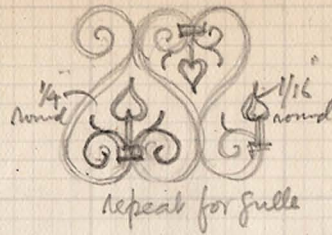
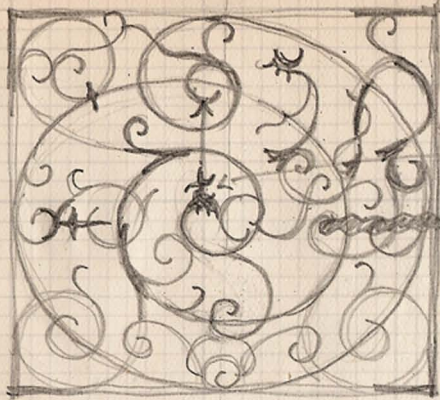
wood external
staircase



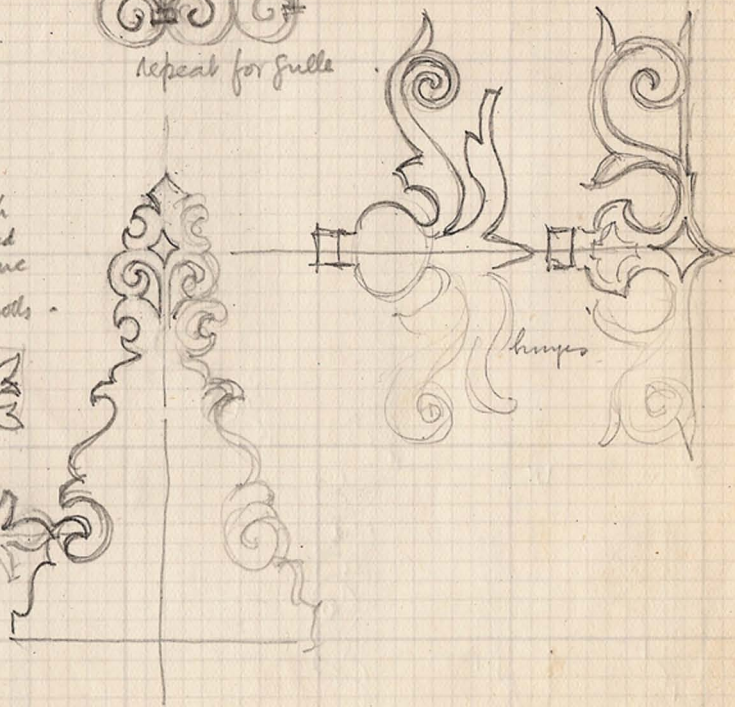
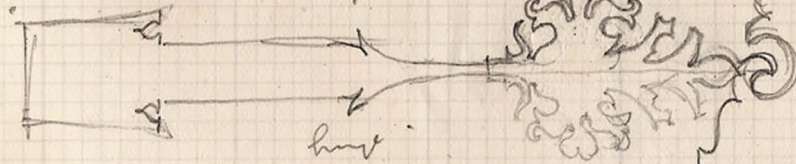
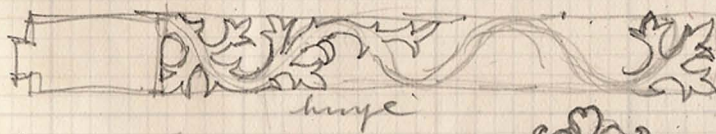
wood chairback seen
in Trachten Museum
Innsbruck.

ETN
5/5 18

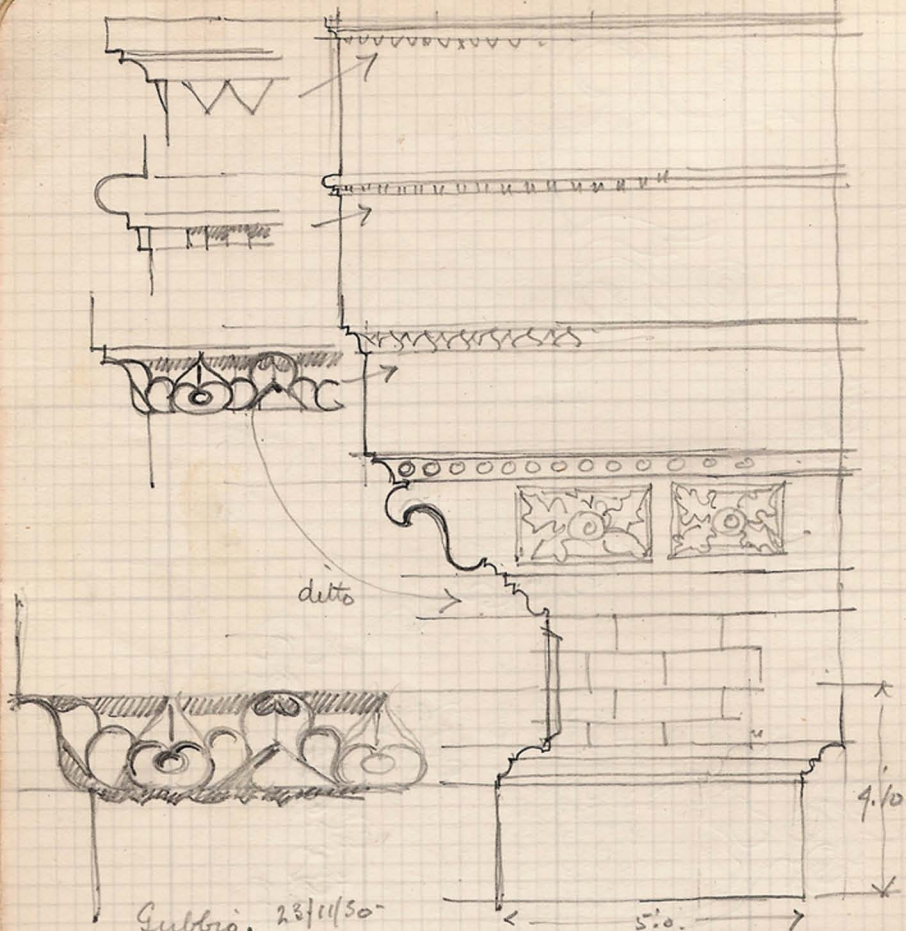
NÜRNBERG Sept. 1930
Ironwork in National
Museum



Iron generally
about $\frac{3}{16}$ " thick
flattened to $\frac{1}{4}$ " broad
and worked to fine
point at ends
Volute filed for scrolls.



ETN
SKS 19



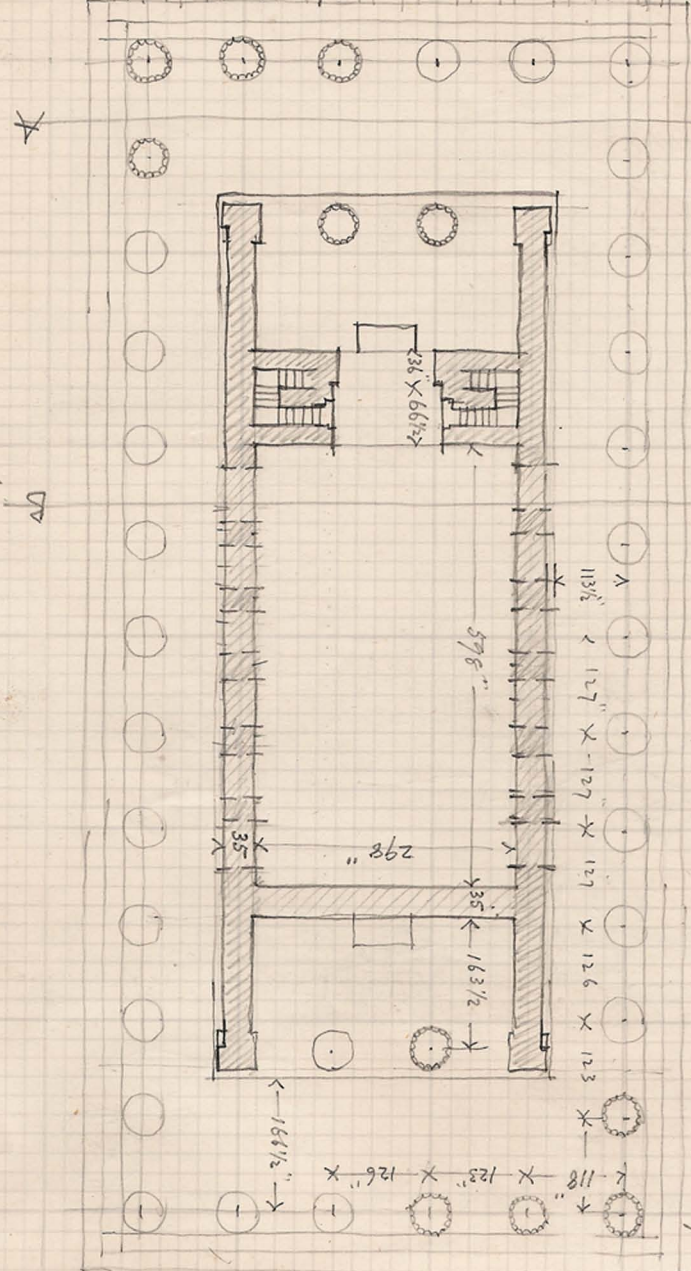
dito

Gubbio. 23/11/50
 Consoli Palazzo Stàuro.

ETN
 SKS 20

Temple Concord, HARRISBURG
 PLAN IN PROPORTION - 19/6/31

GTN
 SCS 21



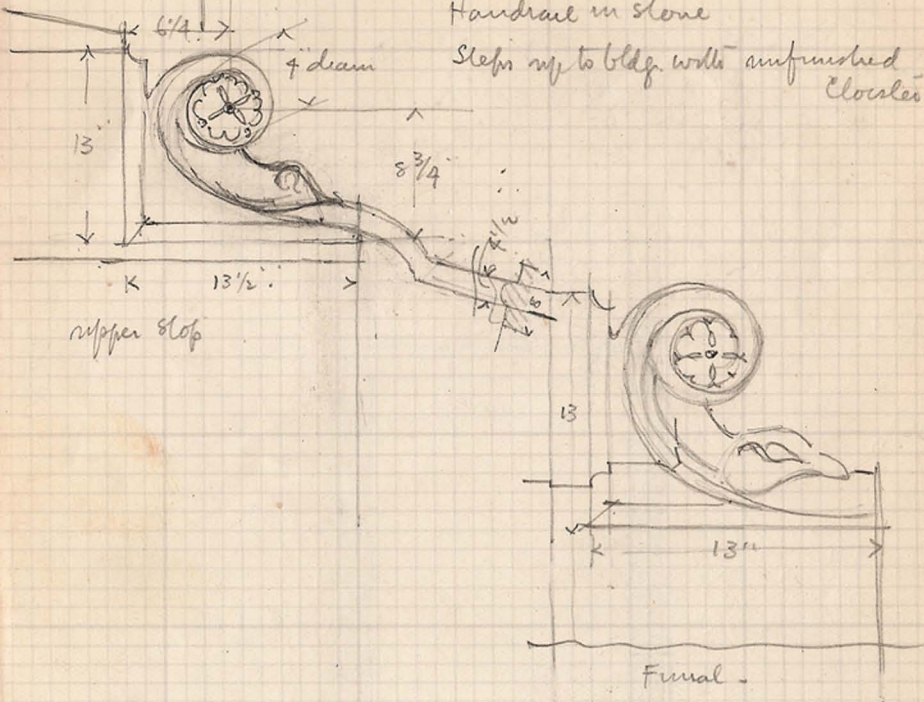
6 No
 1
 55 1/3
 4 1/3
 57 8

54 1/2	79	237
19	64	
173	158	
	298	

Viterbo. April 1931

Handrail in stone

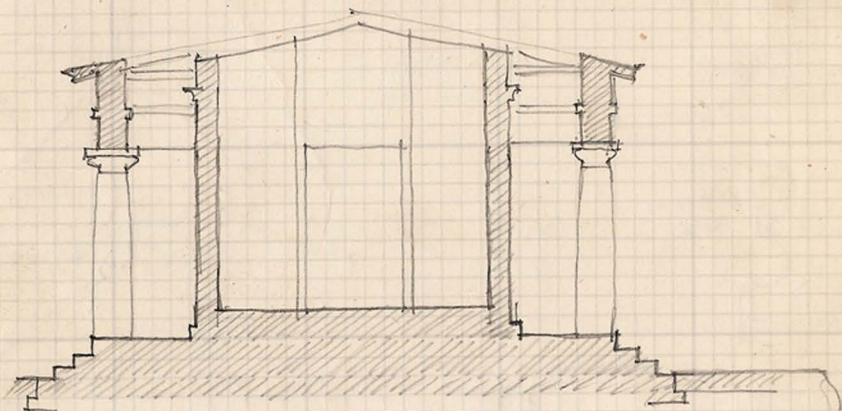
Steps up to bldg. with unfinished
Closets



upper step

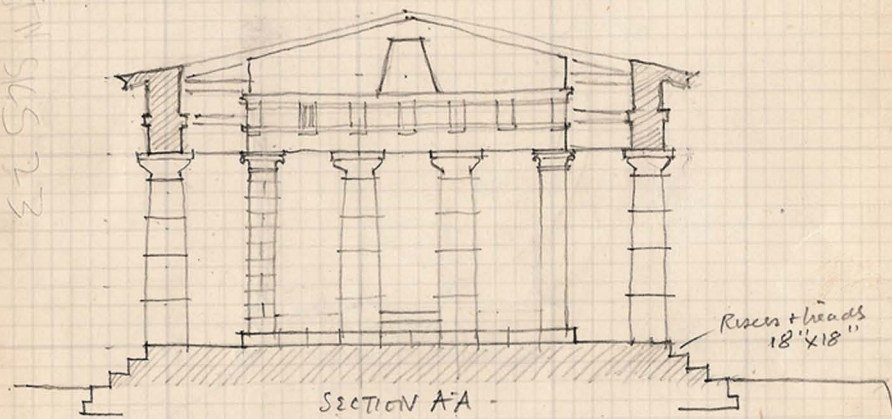
Final

TEMPLE of CONCORD. AGRIGENTVM -
 SECTIONS in PROPORTION.
 19/6/31



SECTION B.B.

EN 565 23



SECTION A.A.

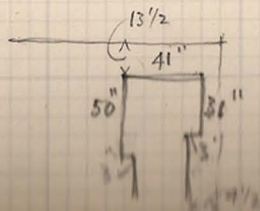
Rises + heads
 18" x 18"

Columns - 5 Diam high.

No of flutes = 20

Column flutes
 at base.

8 1/2"



20 flutes

Plot of flutes in Ceres Temple

apparently beads
" " hollow Egg + dart

Caps to Piers style of Temple

Note cut straight up here

Another type of cap
laying next to
above temple

Tunglyphs.

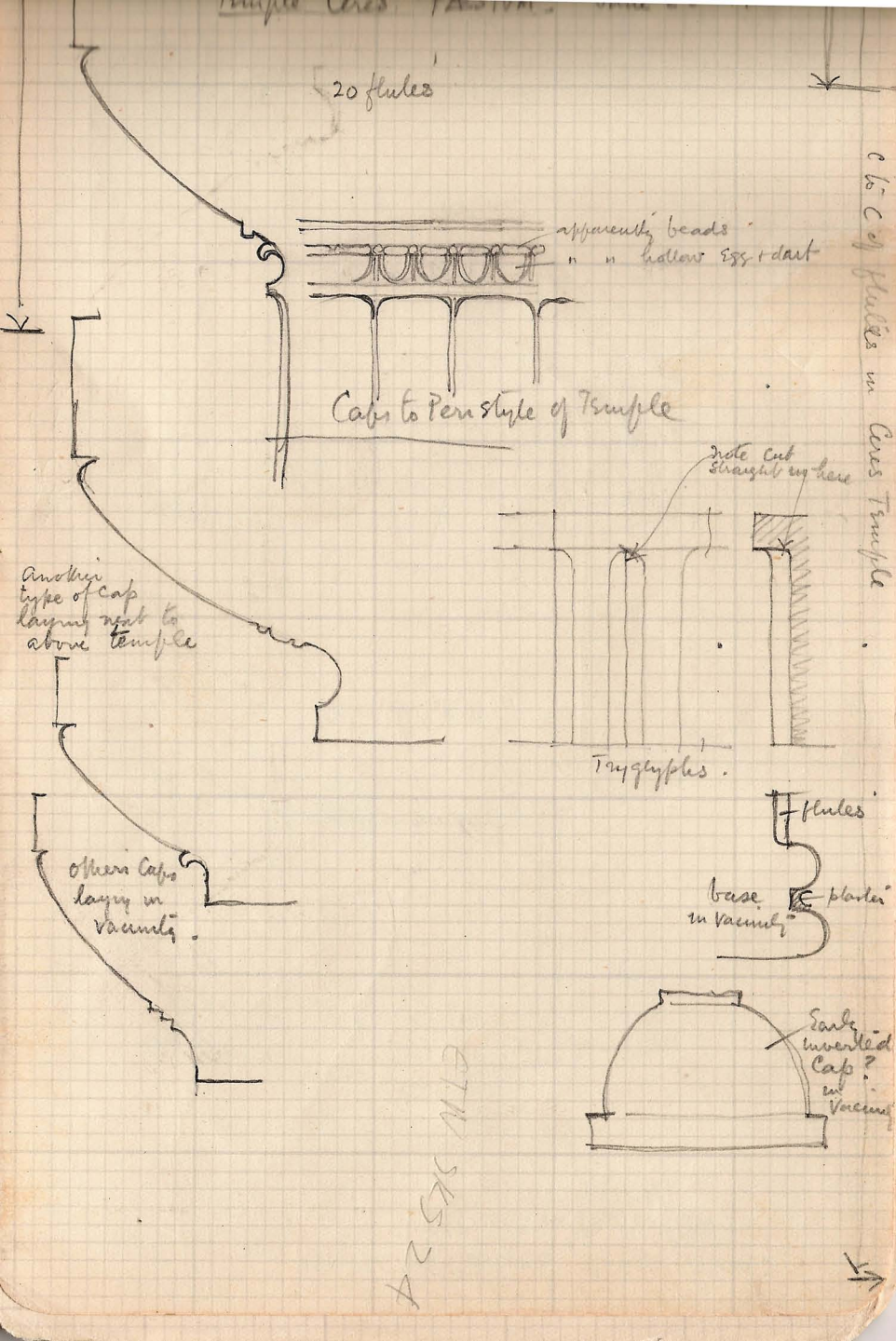
Other caps
laying in
vacuity.

Flutes

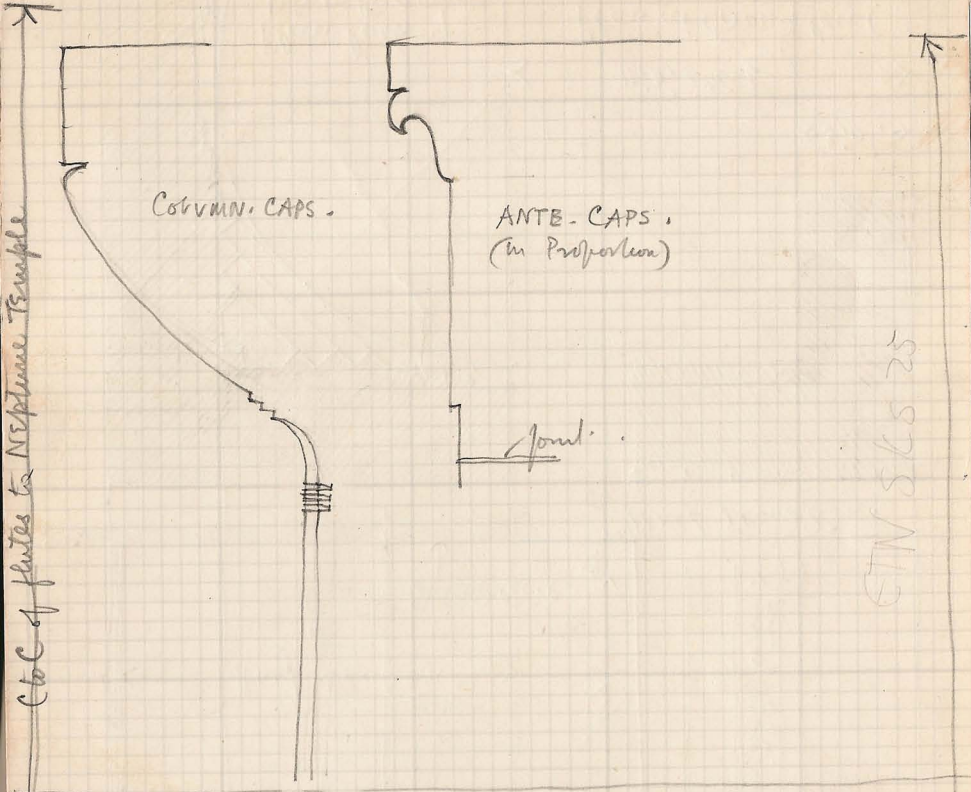
base in vacuity

Same inverted
Cap?
in vacuity

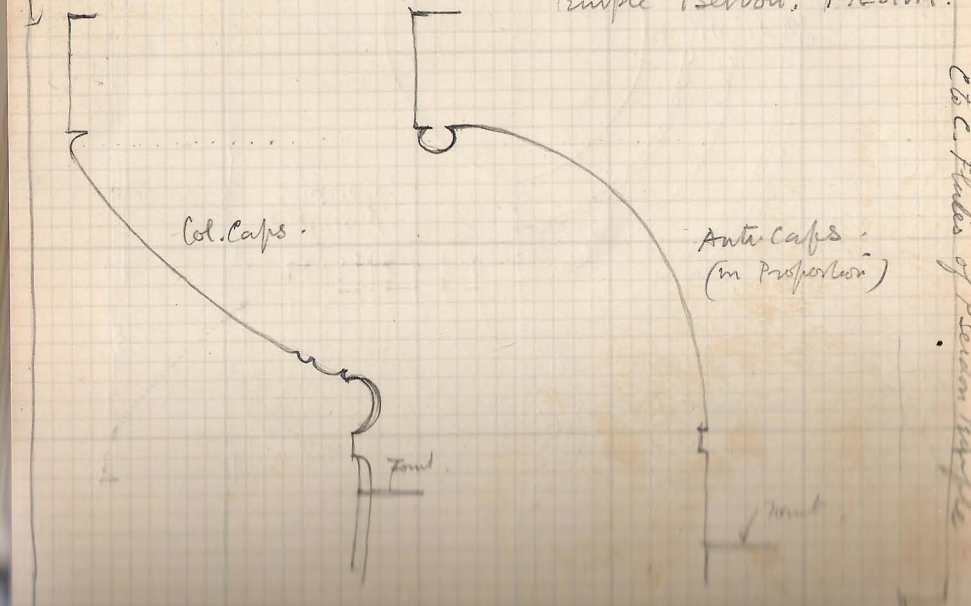
ETW 565 24



NEPTUNE - TEMPLE - PAESTUM.



Temple Poseidon, PAESTUM.



C to C of flutes of Poseidon Temple