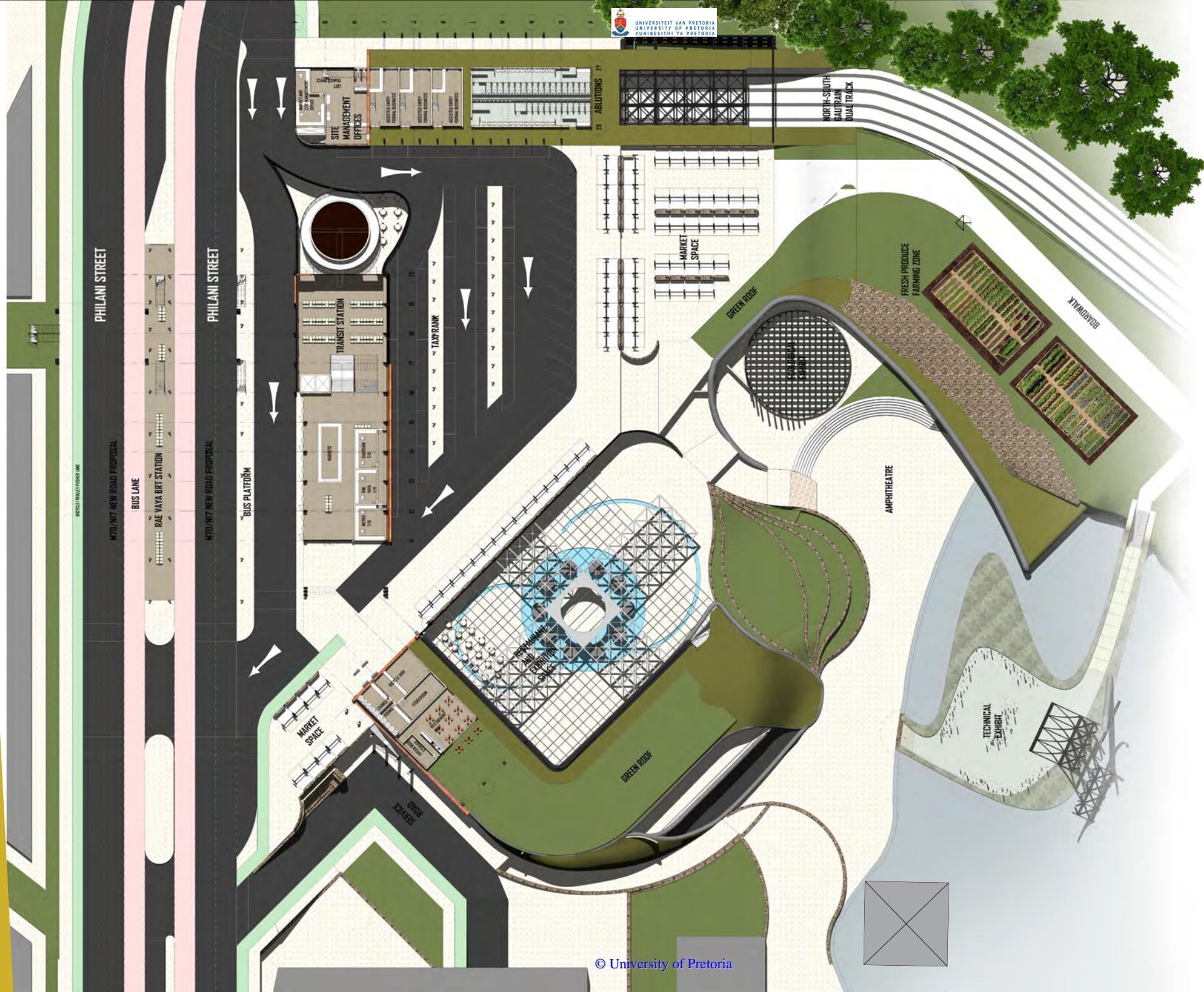


CHAPTER 9 DESIGN RESOLUTION

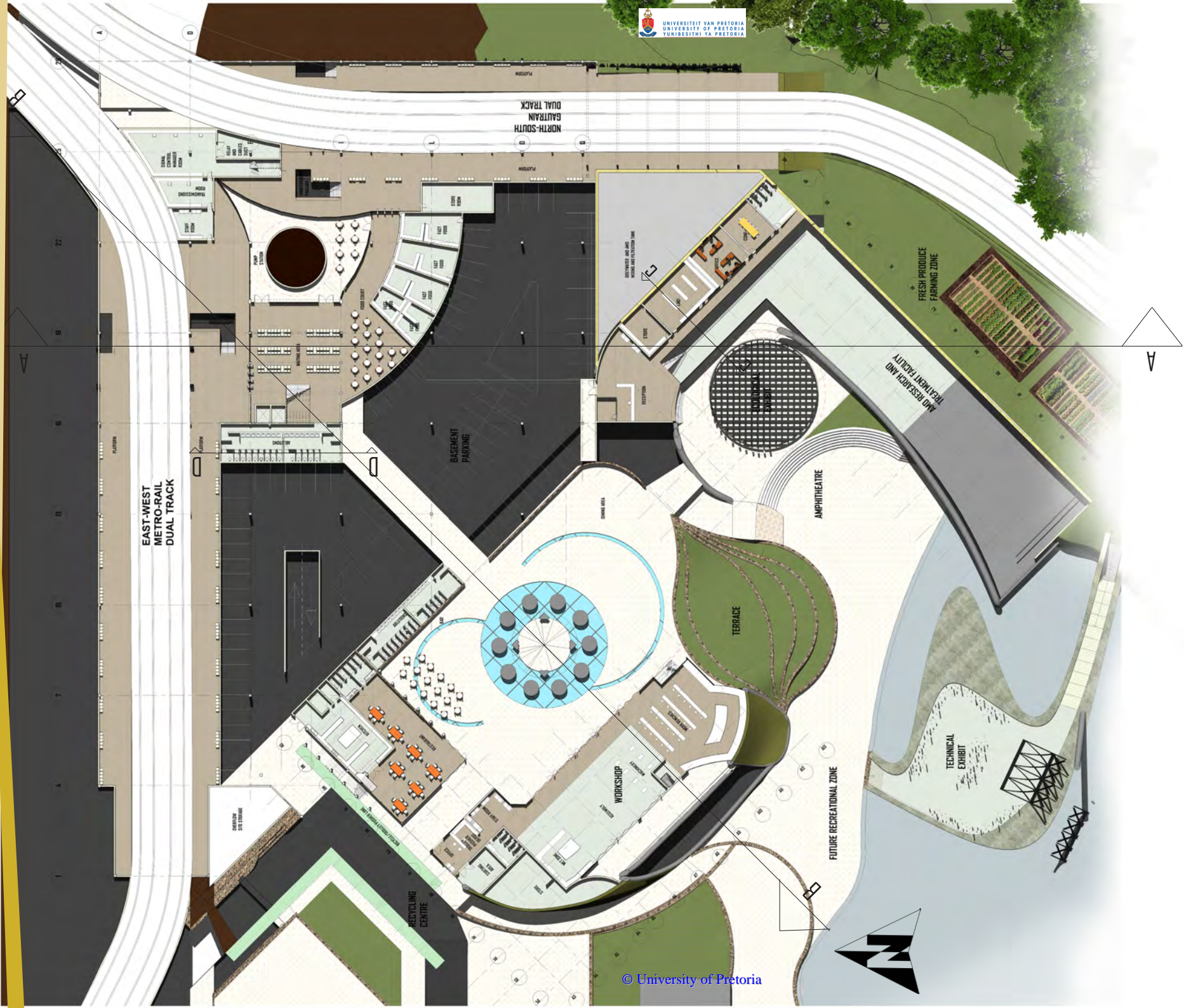


A regenerative precinct



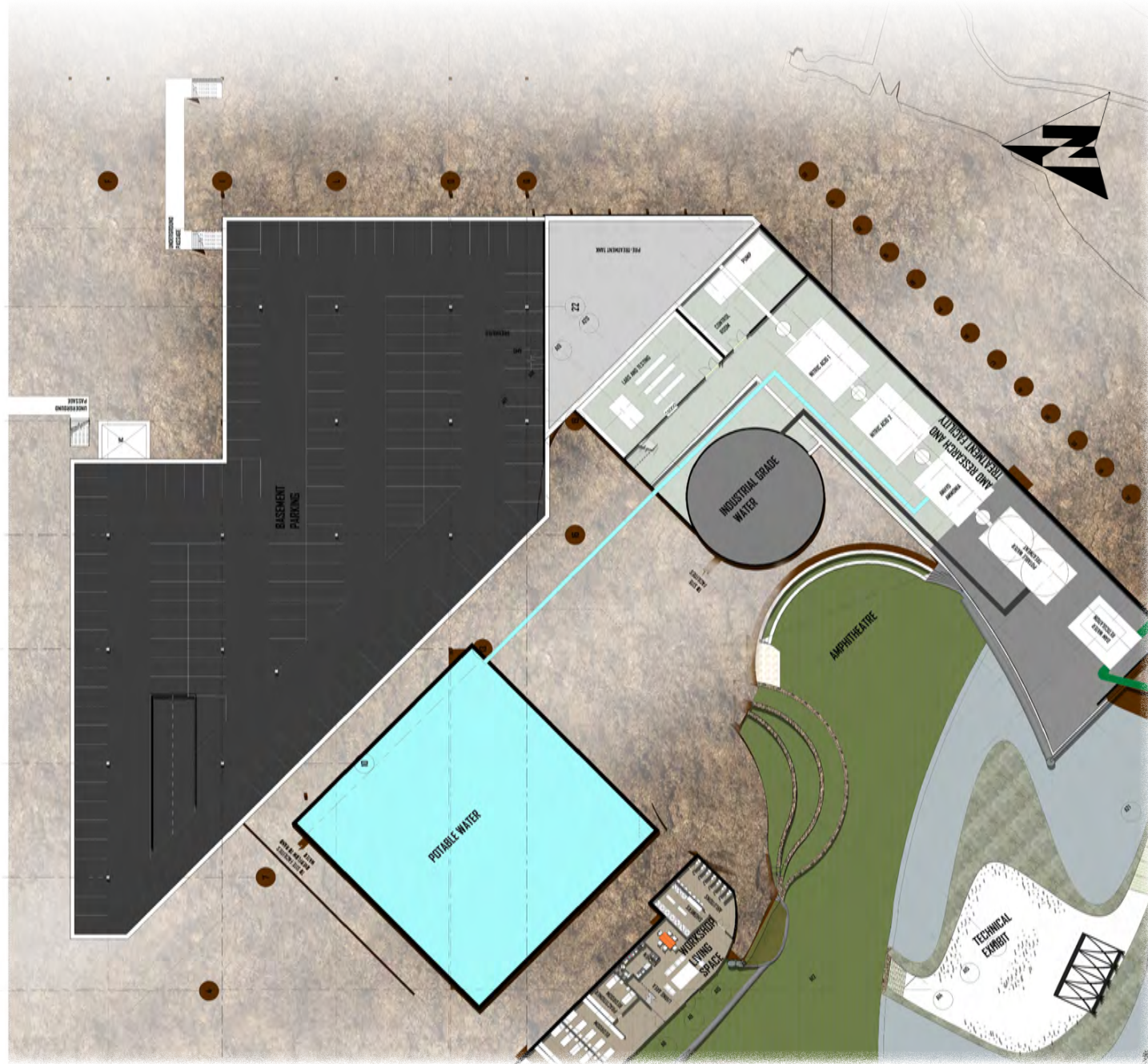
GROUND FLOOR PLAN
1:200

FIG 145 : Ground floor plan (Author, 2017)



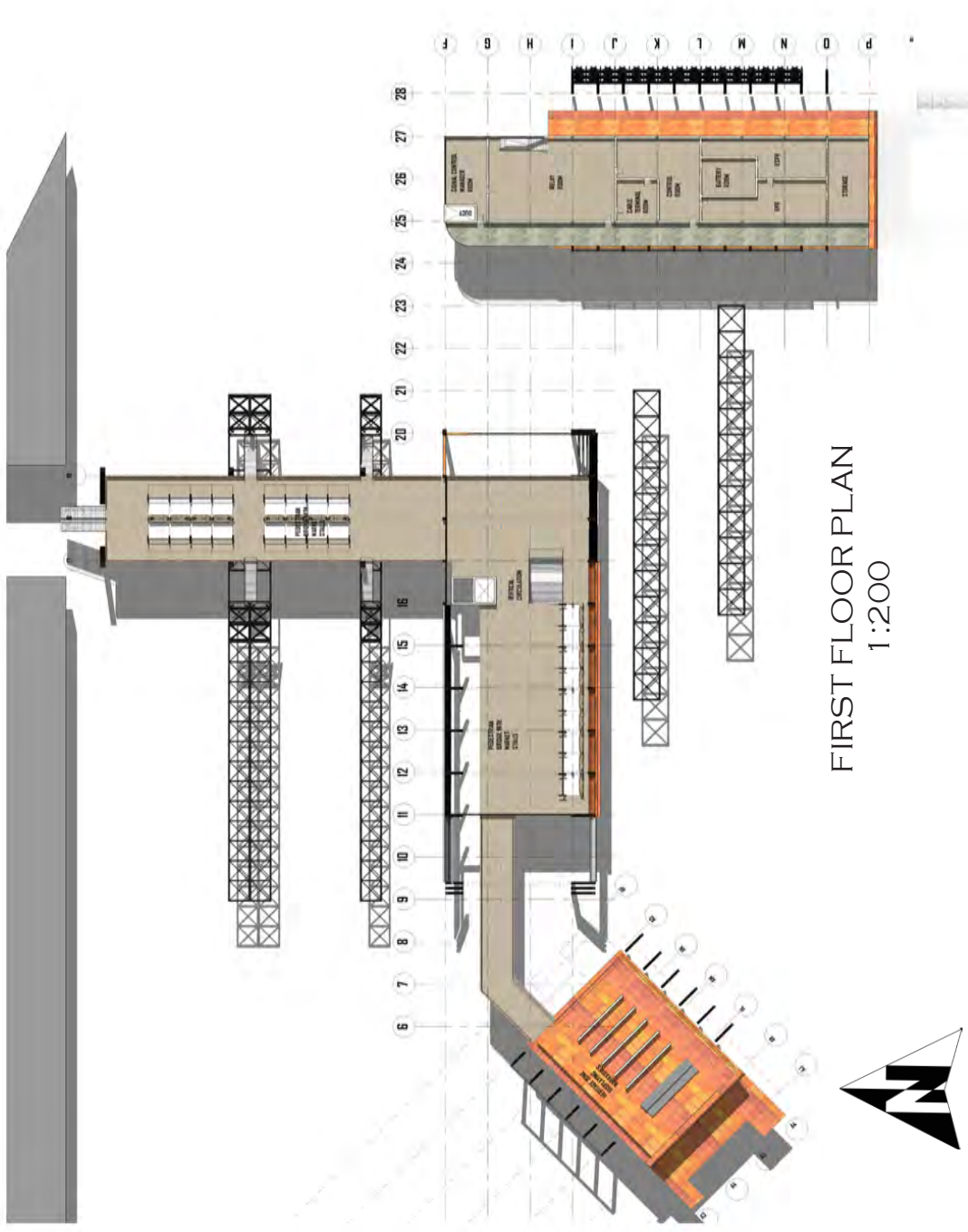
BASEMENT FLOOR PLAN
1:200

FIG 146 : Basement floor plan (Author, 2017)



-2 BASEMENT FLOOR PLAN
1:200

FIG 147 : -2 Basement floor plan (Author, 2017)



FIRST FLOOR PLAN
1:200

FIG 148 : First floor plan (Author, 2017)



VIEWING DECK
1:200

FIG 149 : Viewing Deck floor plan (Author, 2017)



NORTH ELEVATION

FIG 150 : North Elevation (Author, 2017)



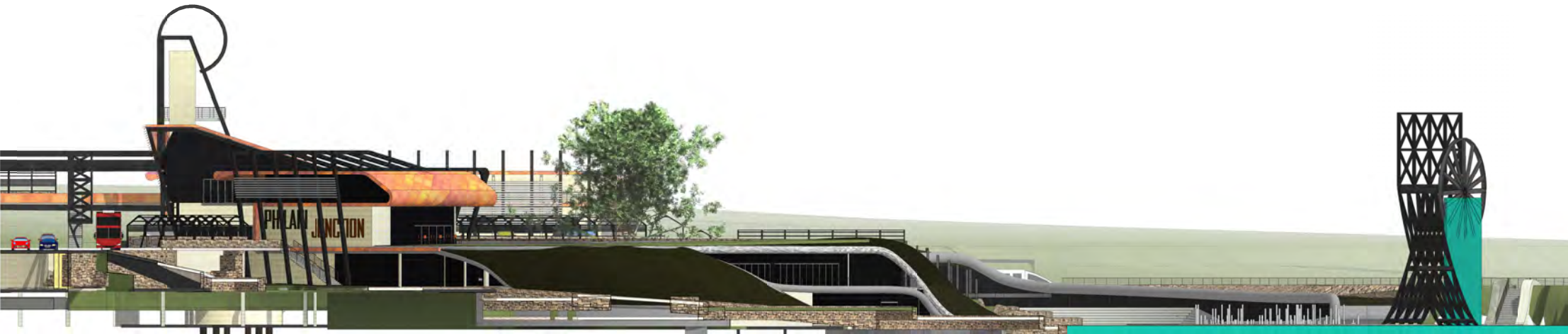
EAST ELEVATION

FIG 151 : East elevation (Author, 2017)



SOUTH ELEVATION

FIG 152 : South elevation (Author, 2017)



WEST ELEVATION

FIG 153 : West elevation (Author, 2017)

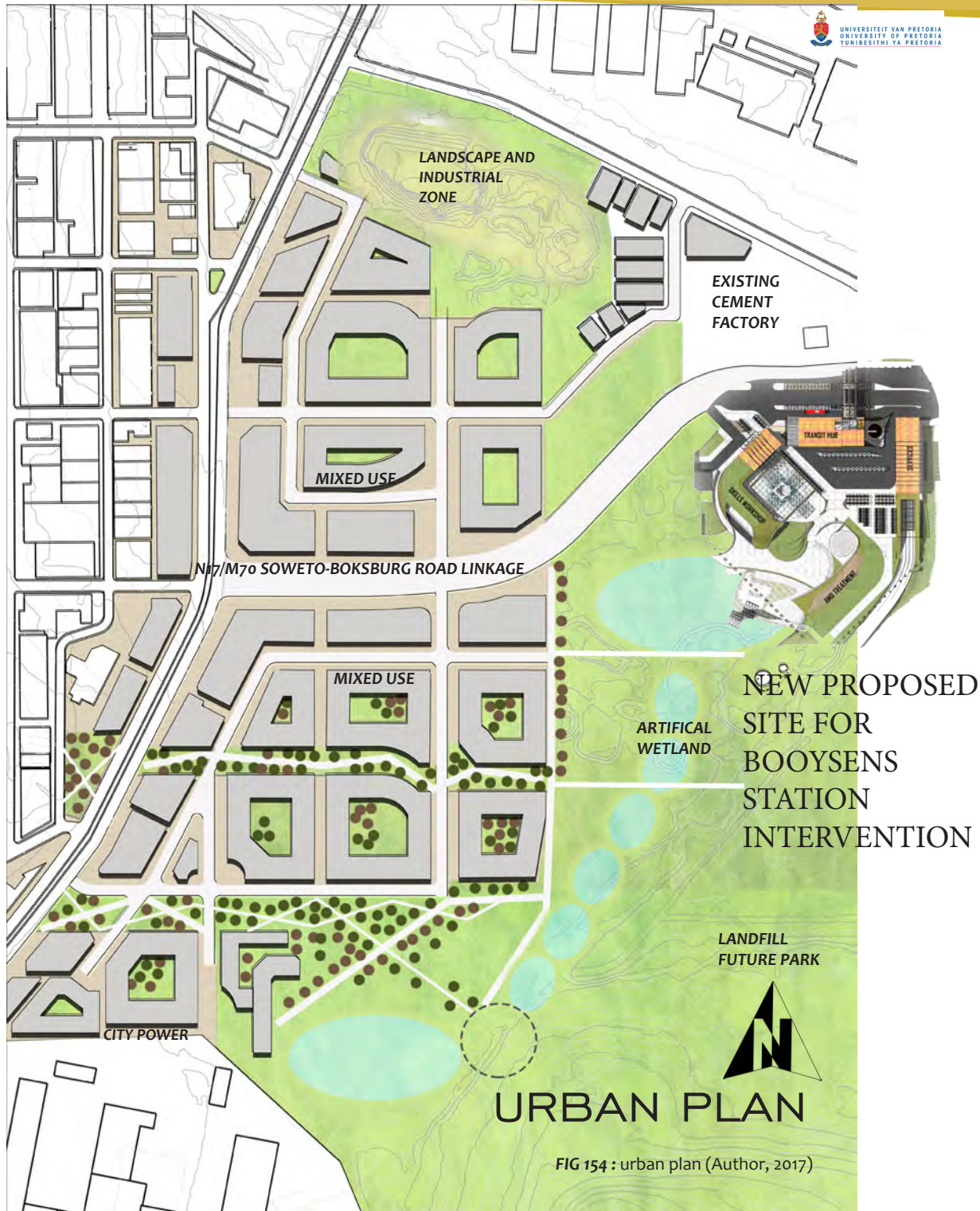
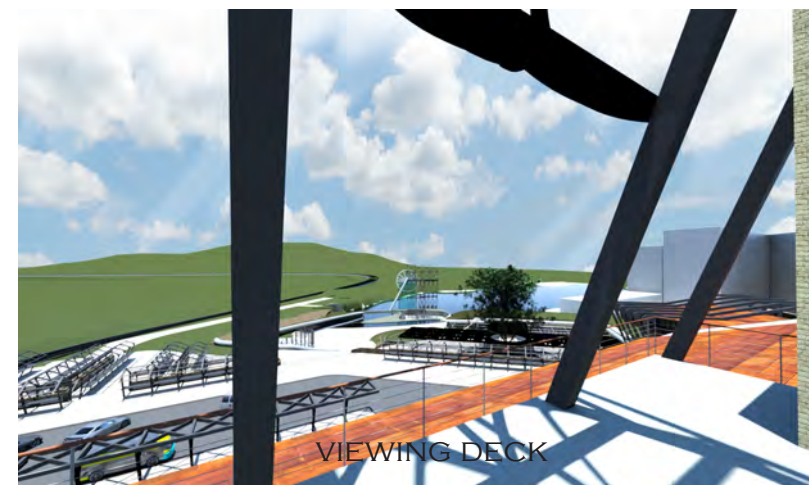


FIG 154 : urban plan (Author, 2017)



VIEWING DECK

FIG 155 : viewing deck 3D (Author, 2017)

The final iteration of the design resolves a zone for the display of narratives and stories within the space above the bicycle hire, as well as the central exhibition space and the mining heritage folly.

The central exhibition space sits over the potable water storage tank and houses exhibition stands and a green lattice which grows vegetation.

The Mining Heritage folly is an adaptable space going from physical exhibition and meditative space to one of recreation as the precinct moves through its life span. The final iteration sees it as a rock climbing wall and an outdoor theatre.



FUTURE MALL

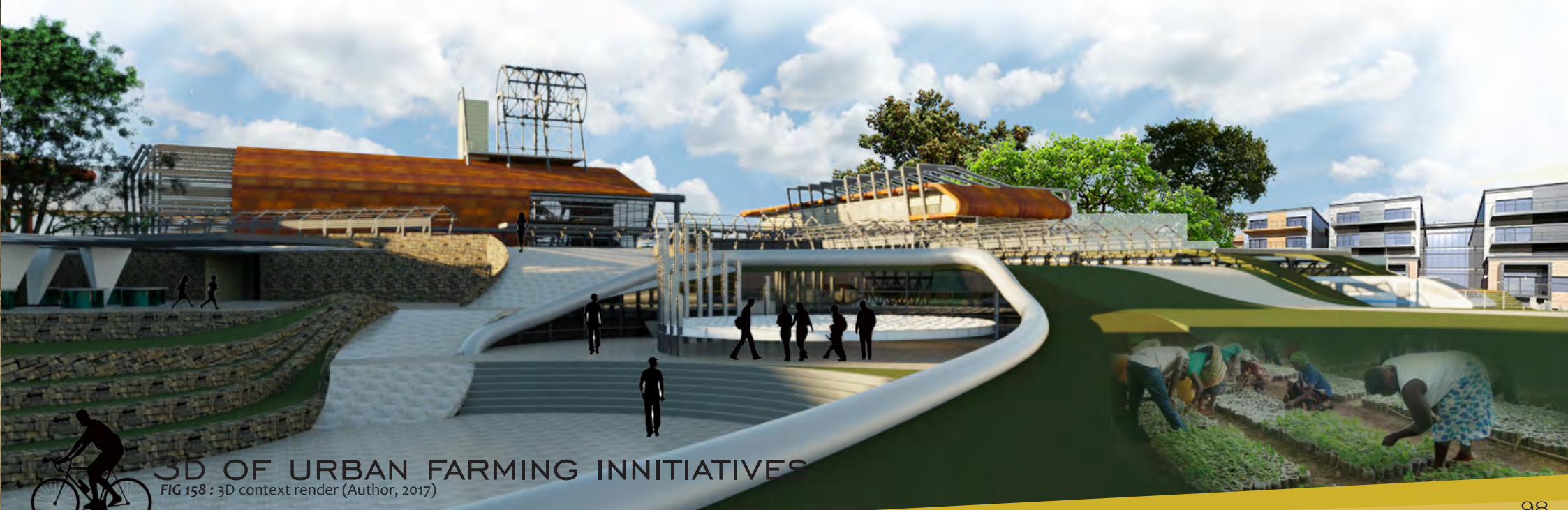
FUTURE HOTEL

FIG 156 : 3D context render (Author, 2017)



FIG 157 : 3D context render (Author, 2017)

3D OF URBAN FARMING INNITIATIVES



3D OF URBAN FARMING INNITIATIVES

FIG 158 : 3D context render (Author, 2017)



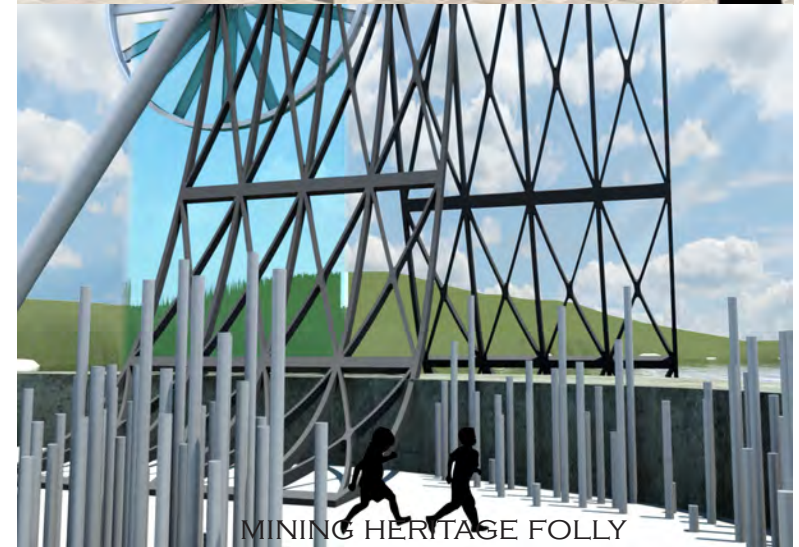
3D RENDER OF PEDESTRIAN BRIDGE
FIG 159 : 3D context render (Author, 2017)



WAITING AREA IN MAIN STATION
FIG 160 : 3D context render (Author, 2017)



MARKETS



MINING HERITAGE FOLLY



WORKSHOP

FIG 161 : 3D context renders (Author, 2017)



3D OF PRECINCT EAST
FIG 162 : 3D context render (Author, 2017)



3D OF ENTRY TO SITE: WEST
FIG 163 : 3D context render (Author, 2017)

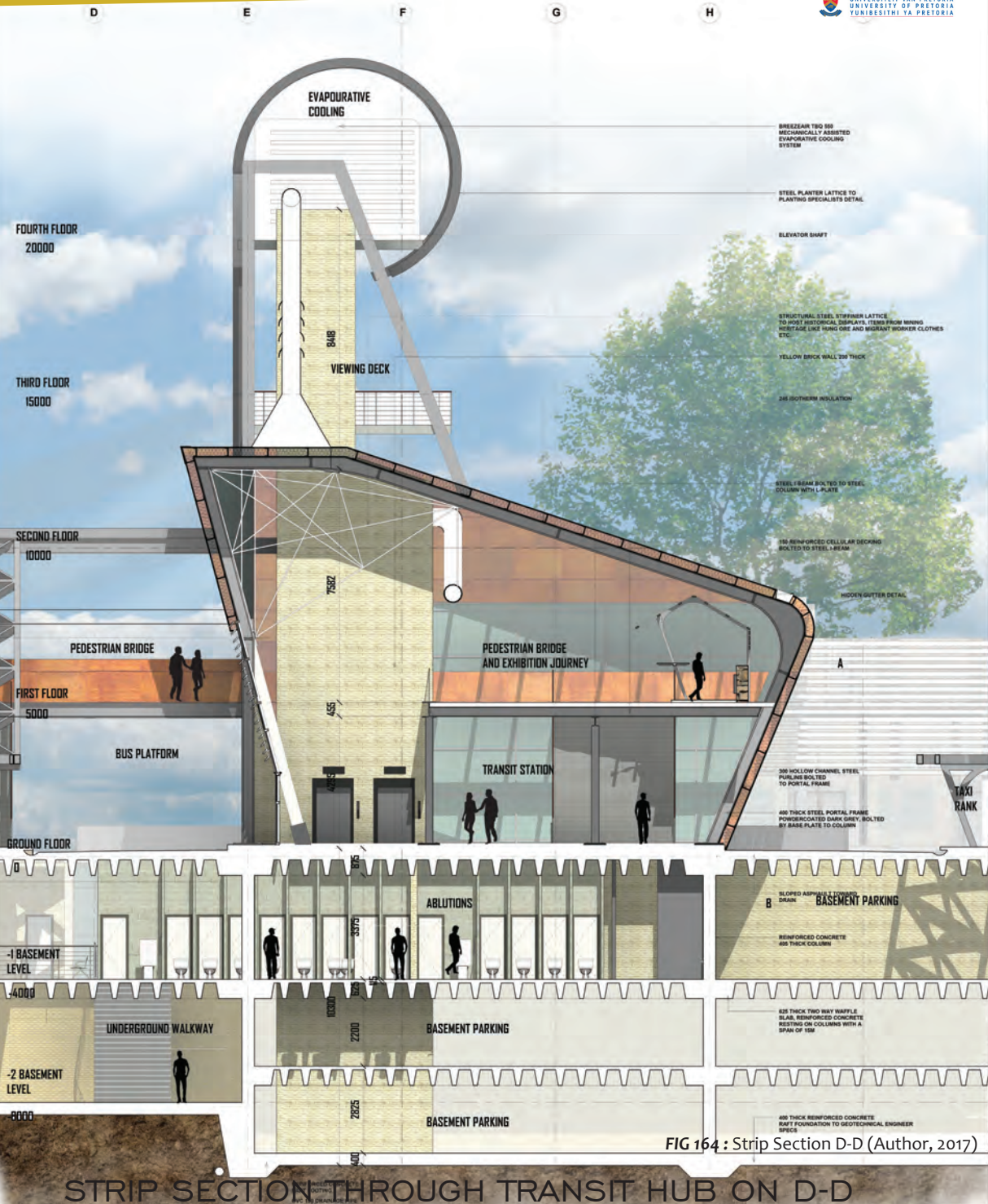


FIG 164 : Strip Section D-D (Author, 2017)

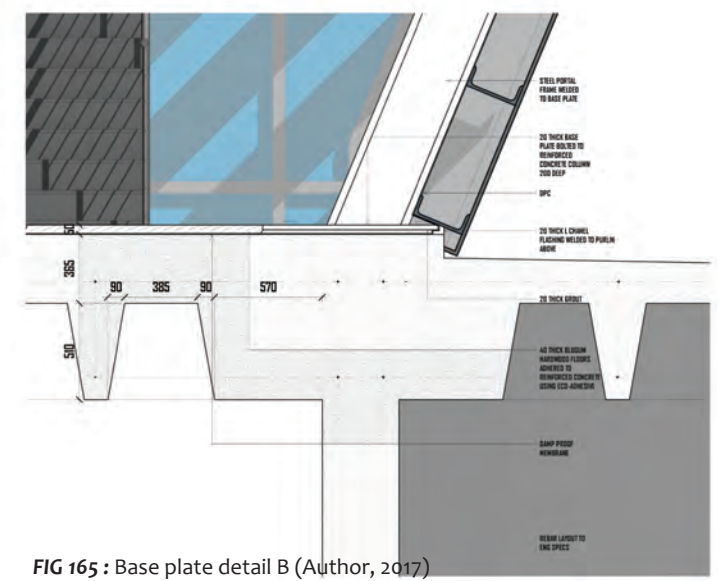


FIG 165 : Base plate detail B (Author, 2017)

BASE PLATE DETAIL B

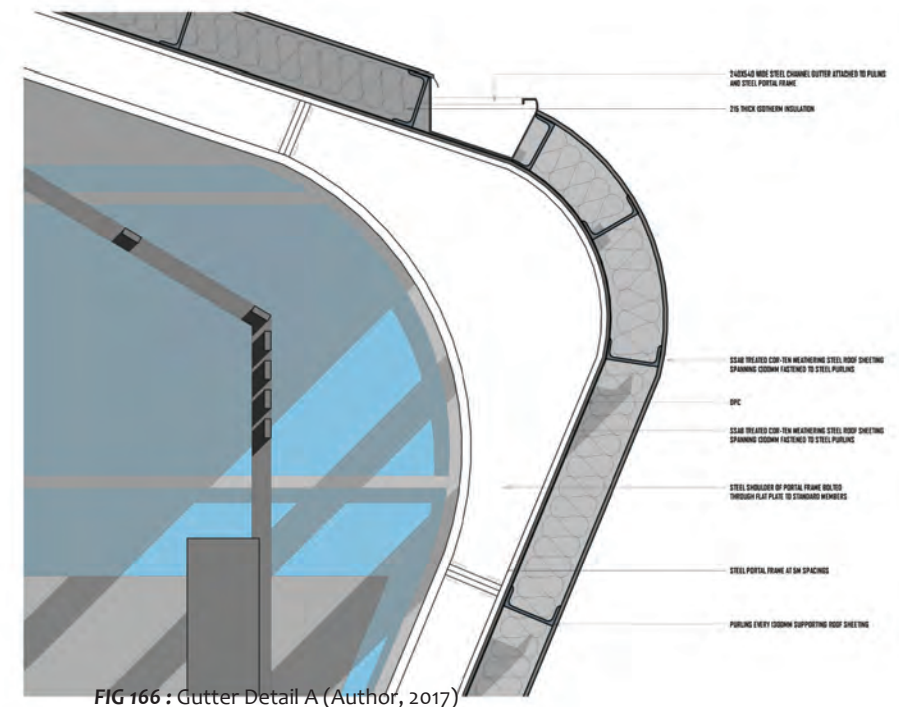


FIG 166 : Gutter Detail A (Author, 2017)

GUTTER DETAIL A

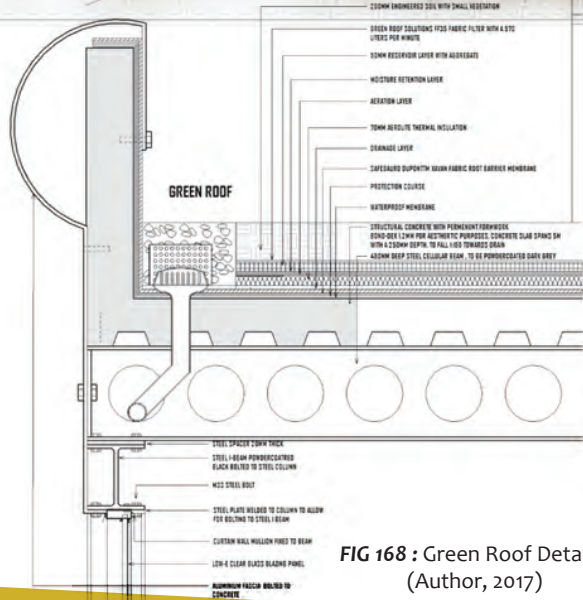
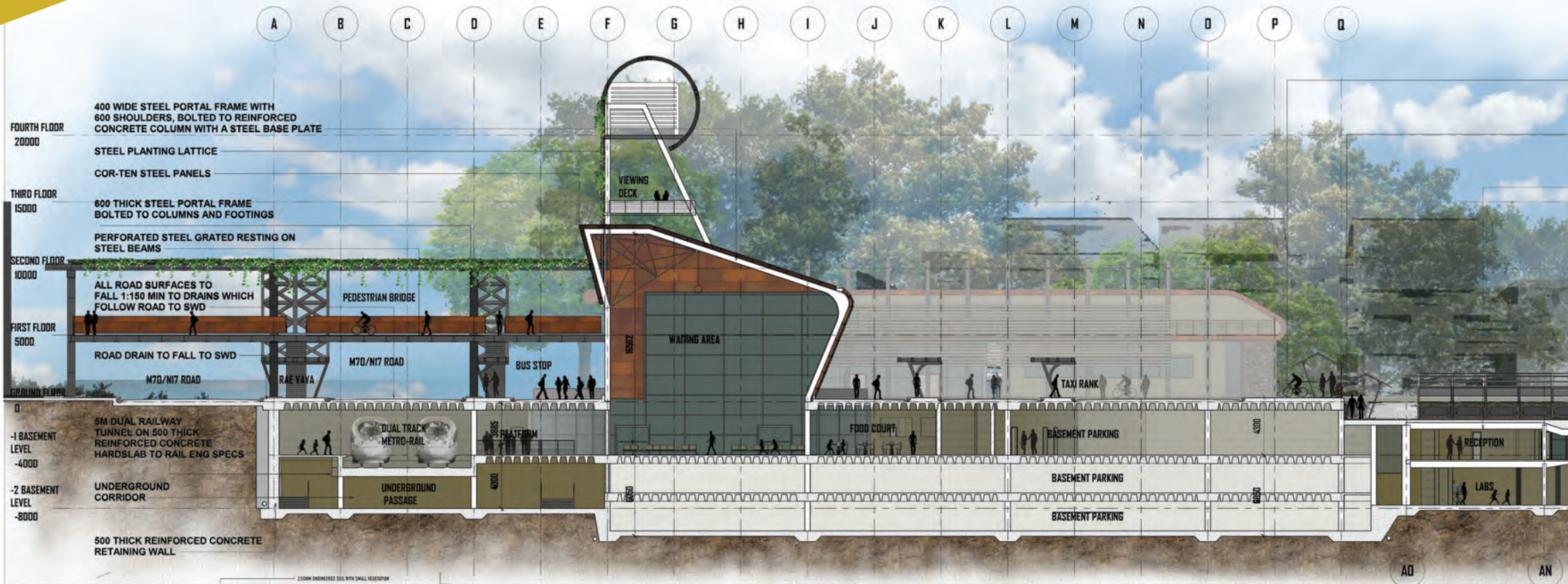


FIG 168 : Green Roof Detail C
(Author, 2017)

GREEN ROOF DETAIL C

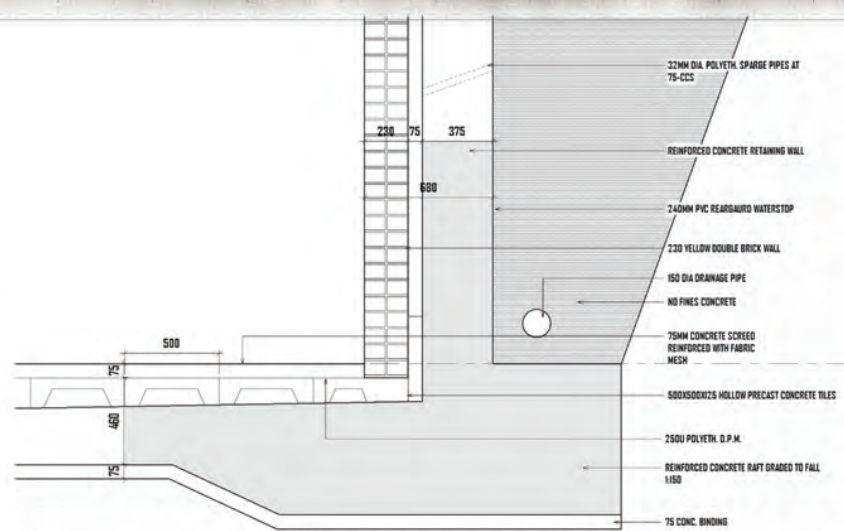
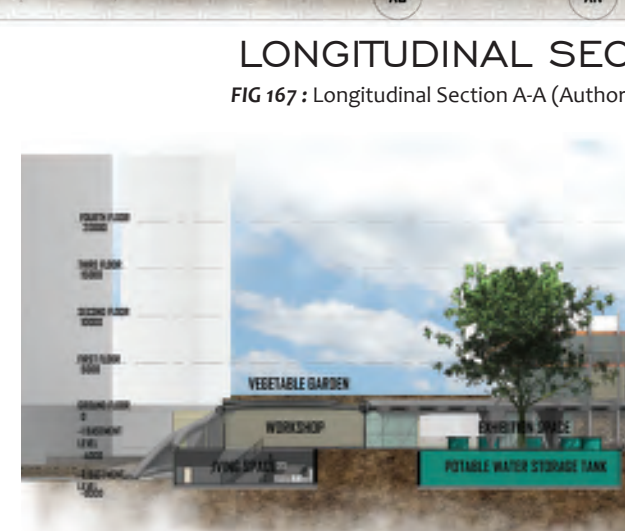


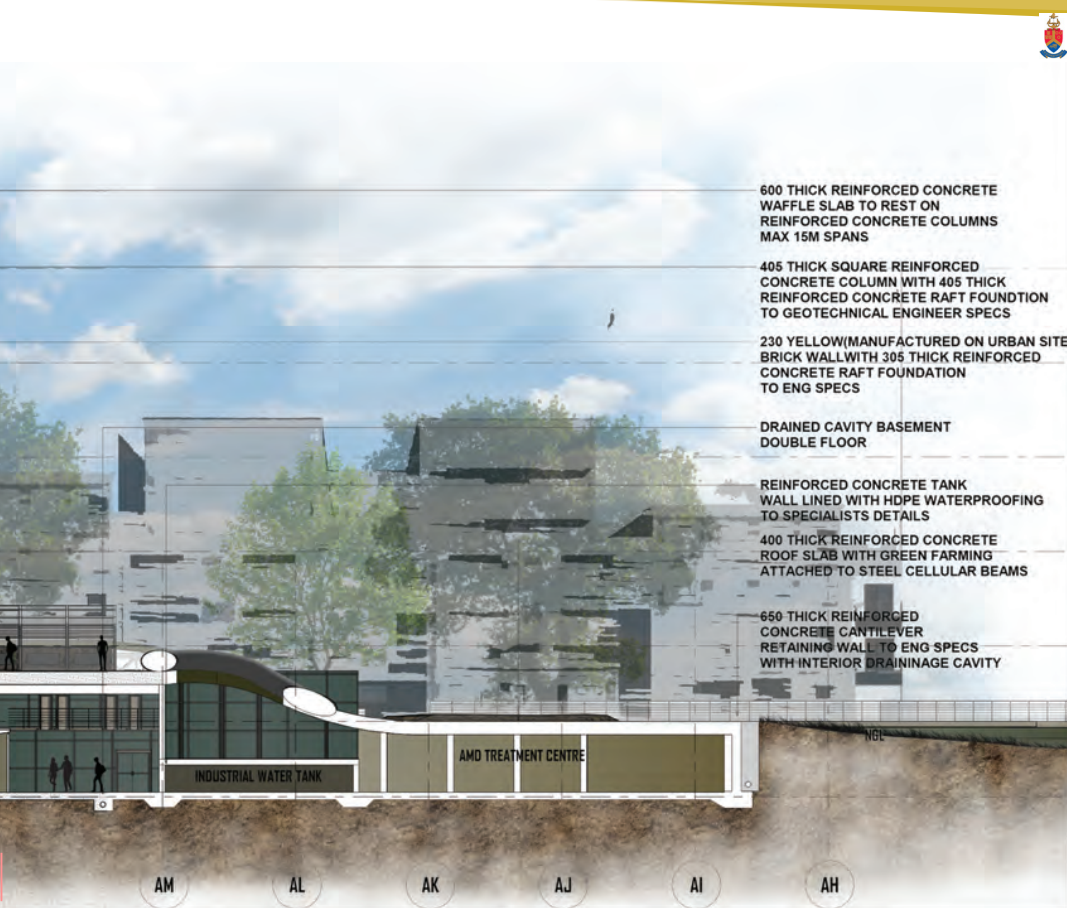
FIG 169 : Drainage Wall Detail D
(Author, 2017)

DRAINAGE WALL DETAIL D



LONGITUDINAL SECTION D
FIG 170 : Longitudinal Section D (Author, 2017)

LONGITUDINAL SECTION D
FIG 170 : Longitudinal Section D



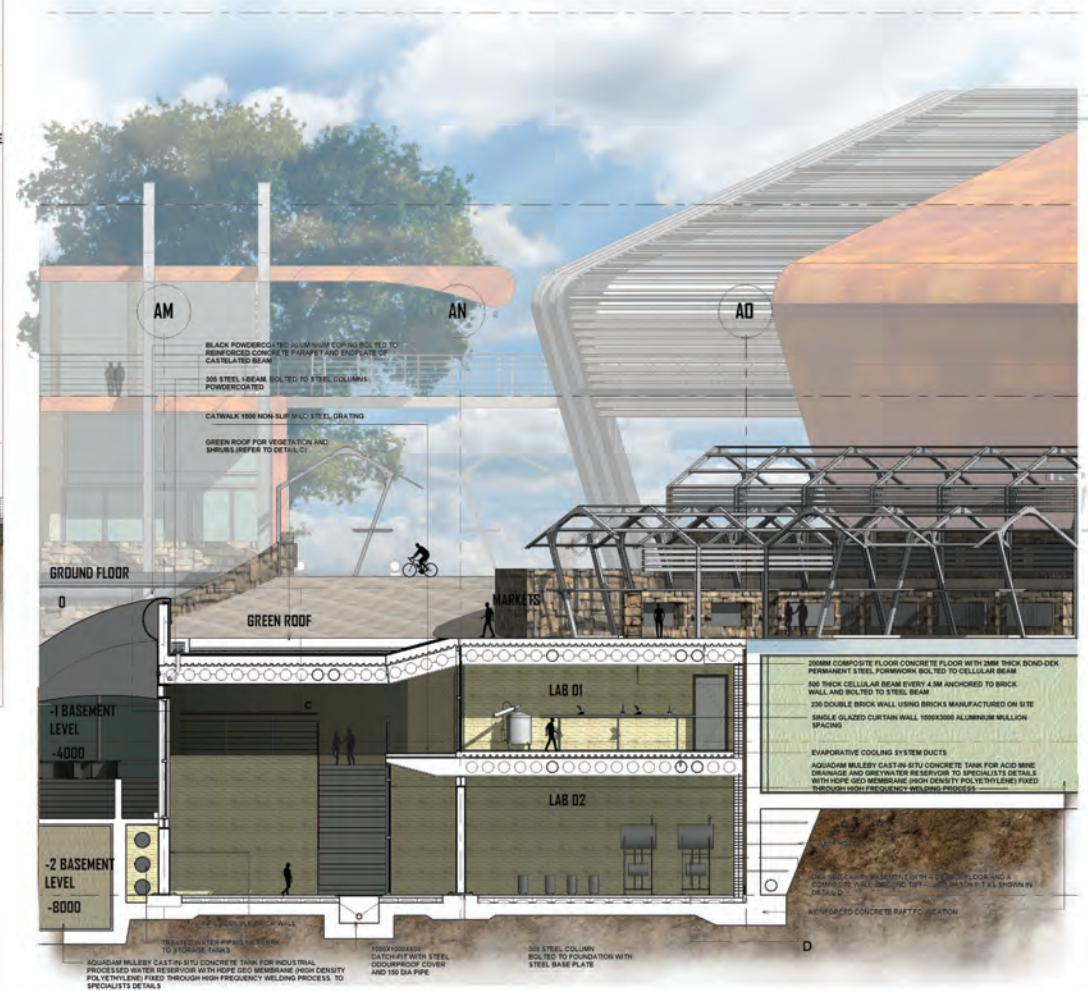
SECTION THROUGH THE SITE ON A-A

(Author, 2017)



SECTION THROUGH THE SITE ON B-B

Radial Section B-B (Author, 2017)



SECTION THROUGH AMD TREATMENT AND RESEARCH FACILITY ON C-C

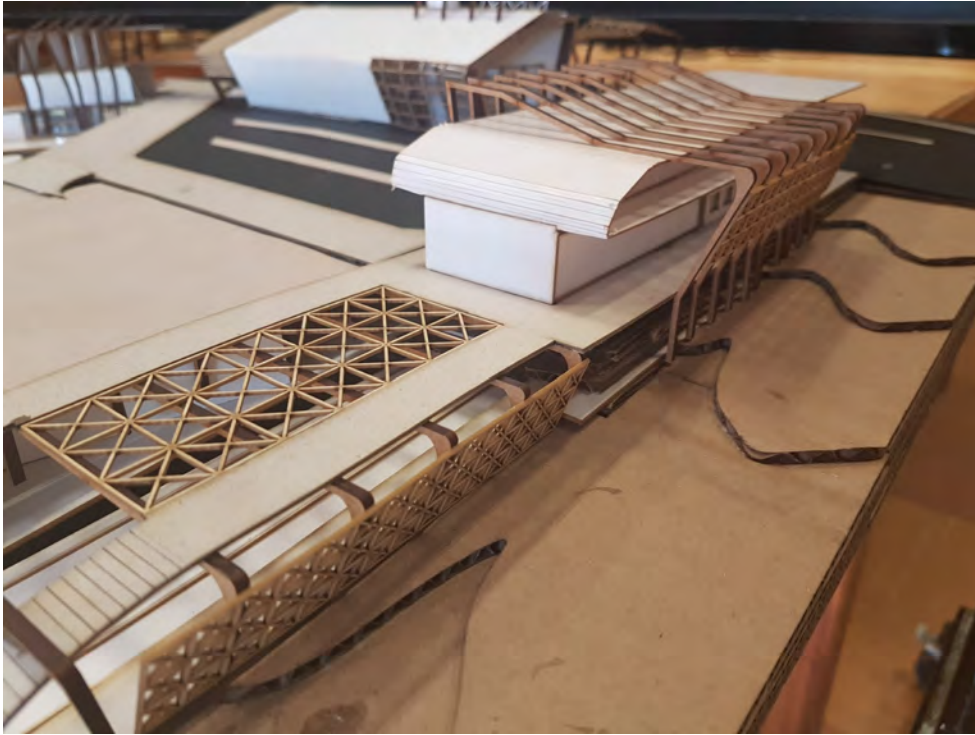
FIG 171 : Section C-C (Author, 2017)



3D OF PRECINCT WEST
FIG 172 : 3D context Render (Author, 2017)

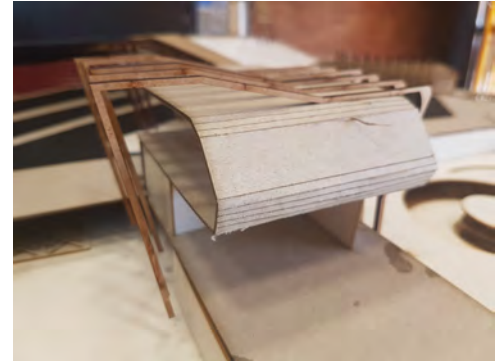
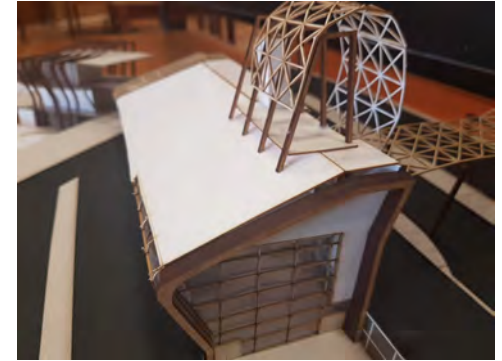


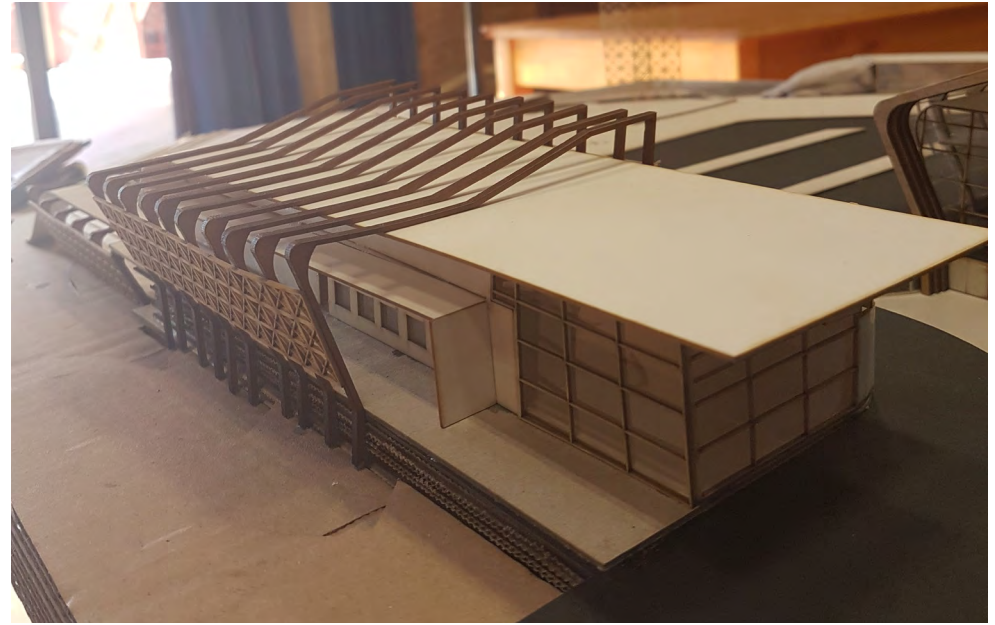
3D OF PRECINCT NORTH
FIG 173 : 3D context Render (Author, 2017)



MODEL OF PRECINCT

FIG 174 : Photos of Model and presentation
(Author, 2017)









3D OF PRECINCT SOUTH
FIG 175 : 3D context Render (Author, 2017)