

-----[IX]-----
C O N C L U S I O N



CONCLUSION

9.1 Conclusion

page 110

9.2 Renders

page 110



Fig. 9.1 Design in Context (Author, 2017)

CONCLUSION

With its existing mix of residents, industry and commerce (albeit segregated from one-another) Pretoria West holds the potential for a unique relationship between industry and the citizens of Pretoria. Only by understanding the role that these industries play within the greater context of the city can the rich character and culture of a place be amplified and solidified in a development plan. Catalysed by its heritage, development will become a manifestation of the character of place that will attract further growth and simultaneously embrace the existing stakeholders.

I conclude that theoretically it is possible to bridge the vast void that exists between the industrial environment and the public realm by introducing a community setting for production and reimagining the way that industries function. Through an intricate morphological understanding of industrial development, we can design a future for industries that is contextually appropriate.

The existing industrial built environment is often misshapen and illegible and whilst it is difficult to organize (and navigate) the seemingly disorganized site, it is possible to resolve; through understanding historic boundaries and development patterns that can be utilized as organizational grids. In this case historic erf divisions and consolidations can be utilized as an organizational tool at a large scale and should serve as a guide to where future structures should be erected in order to maintain a legible built environment.



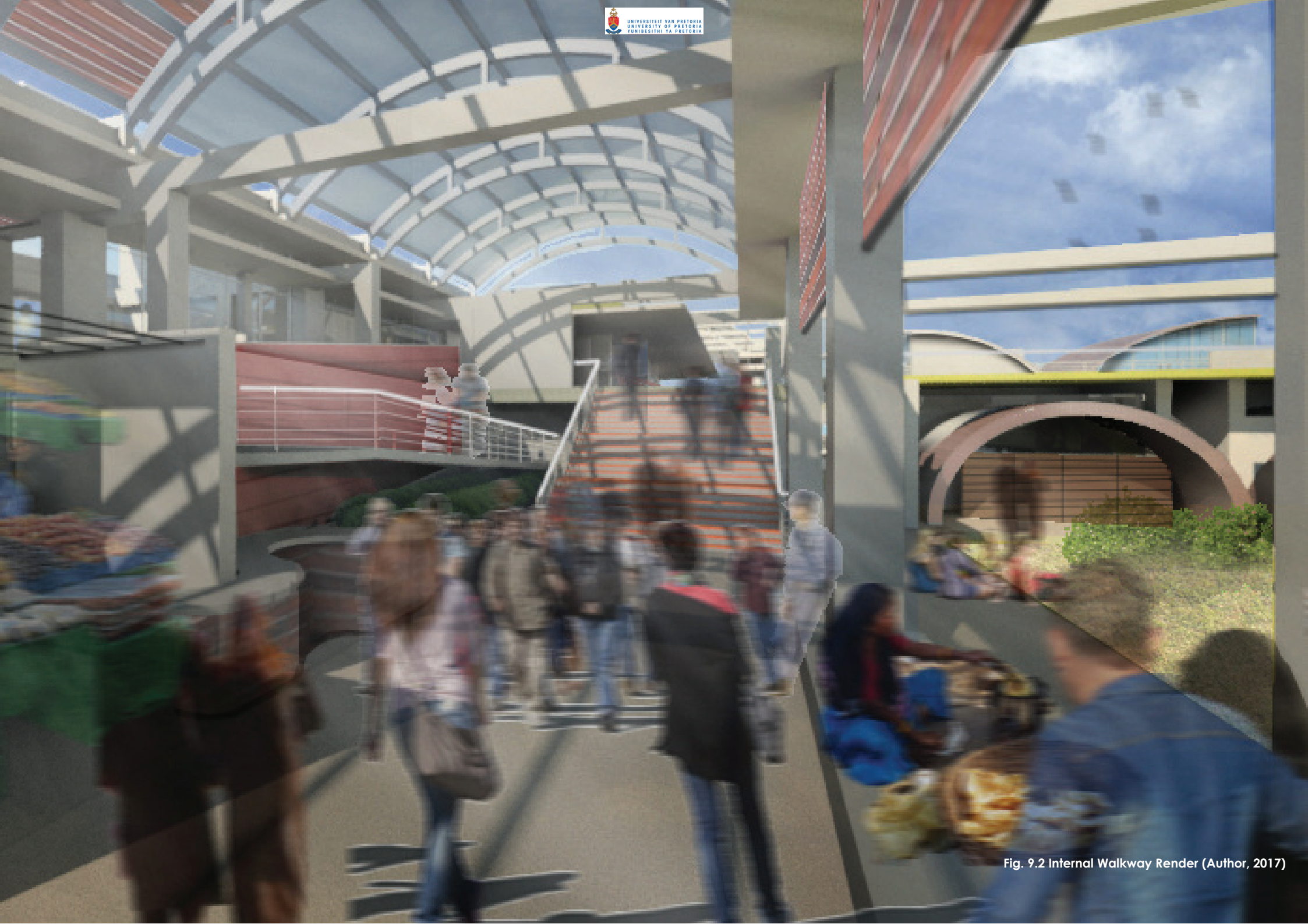


Fig. 9.2 Internal Walkway Render (Author, 2017)

When designing future additions, understanding the historic expansion of these industrial buildings holds the key to a harmonious relationship between old and new. With minimal architectural intent, these buildings supply little for the architect to grapple onto, but with material spans and structural repetition forming the underlying ordering principle; it is possible to create a logical and ordered extension of the past.



Fig. 9.3 Northern Birds Eye View (Author, 2017)



Fig. 9.4 Southern Birds Eye View (Author, 2017)

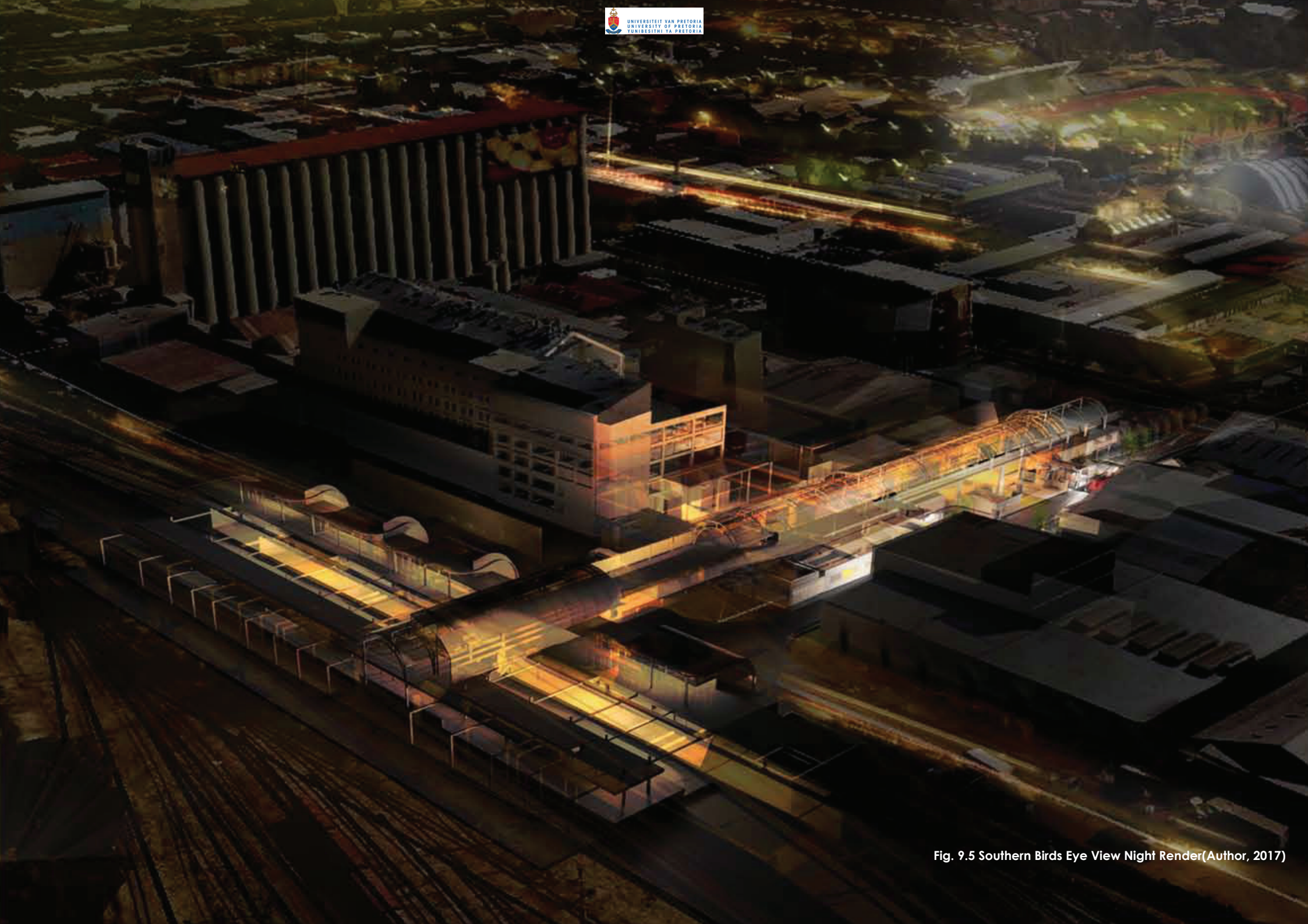


Fig. 9.5 Southern Birds Eye View Night Render(Author, 2017)

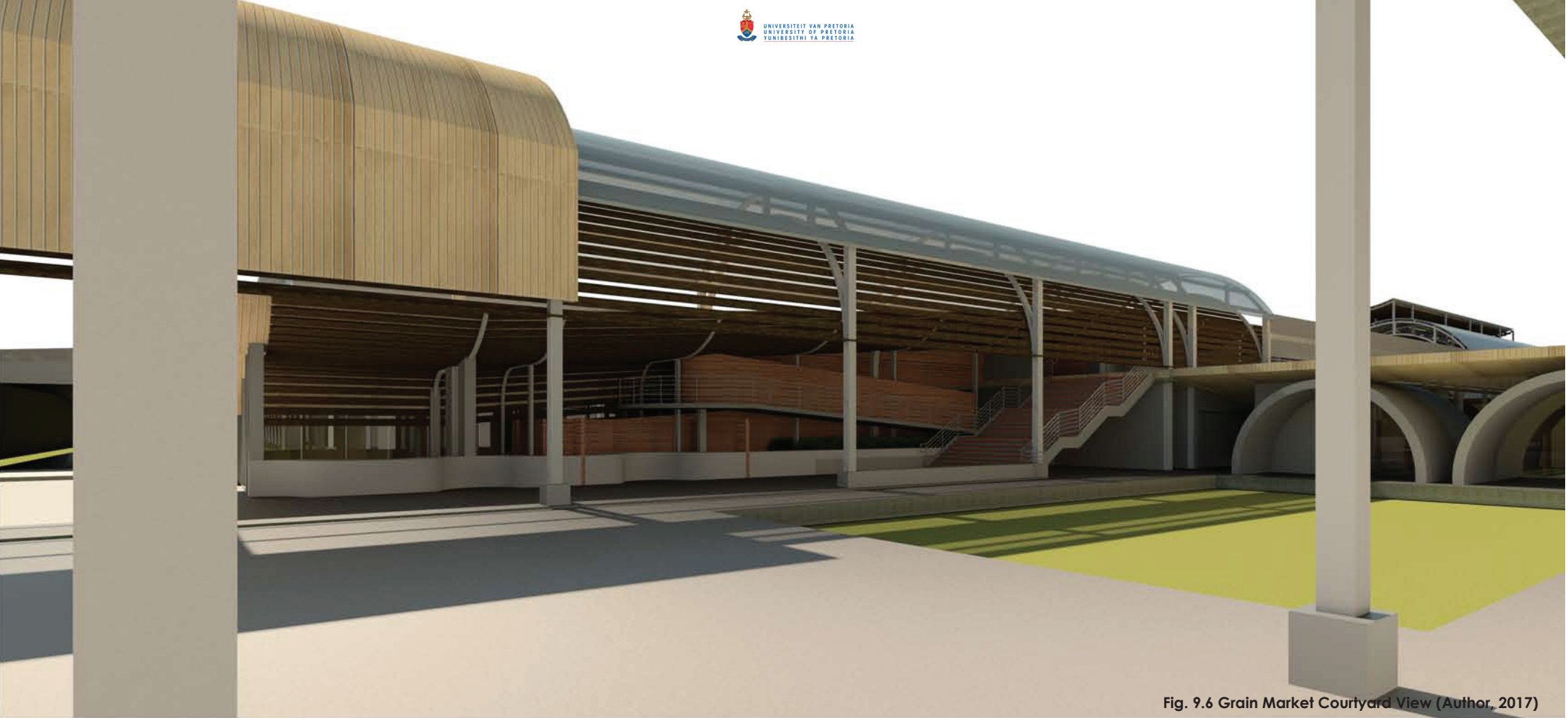


Fig. 9.6 Grain Market Courtyard View (Author, 2017)

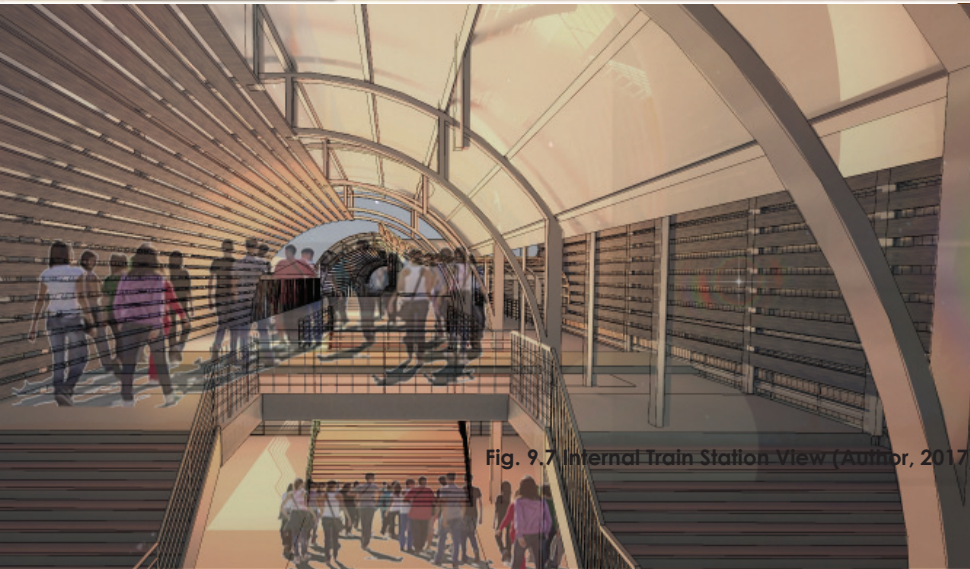


Fig. 9.7 Internal Train Station View (Author, 2017)

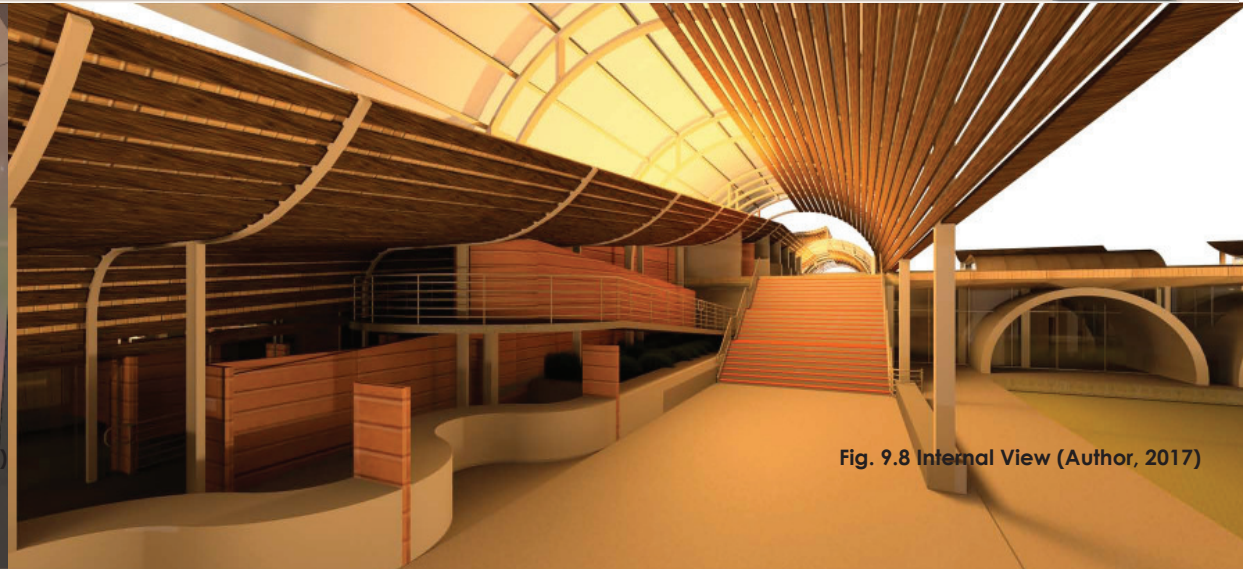


Fig. 9.8 Internal View (Author, 2017)



Fig. 9.9 Southern View Development Render (Author, 2017)

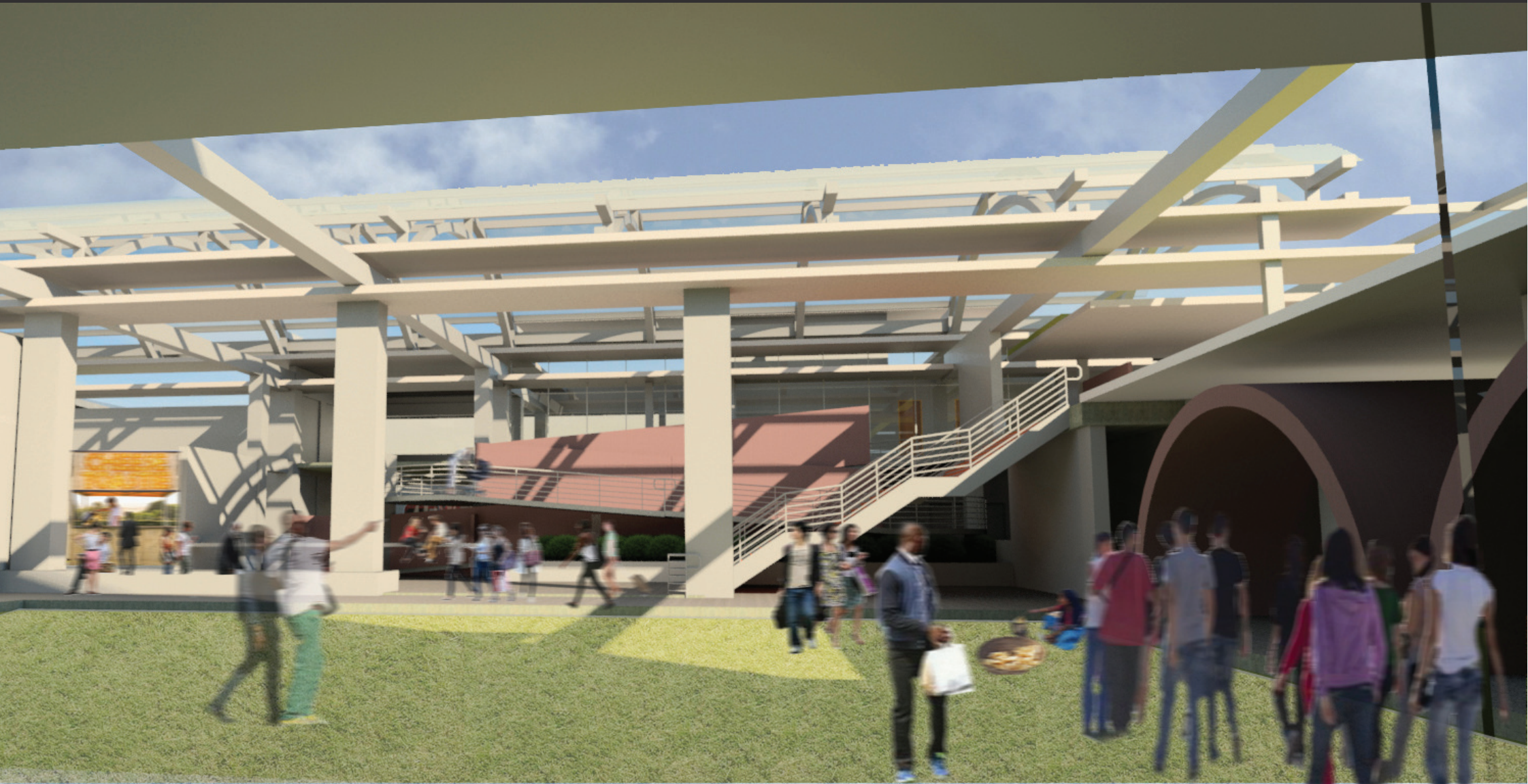


Fig. 9.10 Grain Market View (Author, 2017)



Fig. 9.11 Grain Market View Night Render (Author, 2017)





Fig. 9.12 Night Render of Initial Train Station Design (Author, 2017)