



Figure 8.1

CHAPTER 08

THE FINAL DESIGN

Chapter 8 presents the final design for the Creative Conservatory Precinct, the culmination of the conceptual exploration and design development.

8.1_ INTRODUCTION

The final design resolution for the Creative Conservatory is the product of the contextual analysis, theoretical investigations, programmatic studies as well as the conceptual and design development illustrated in the document thus far.

*Note:
All figures in this chapter are by the author.*

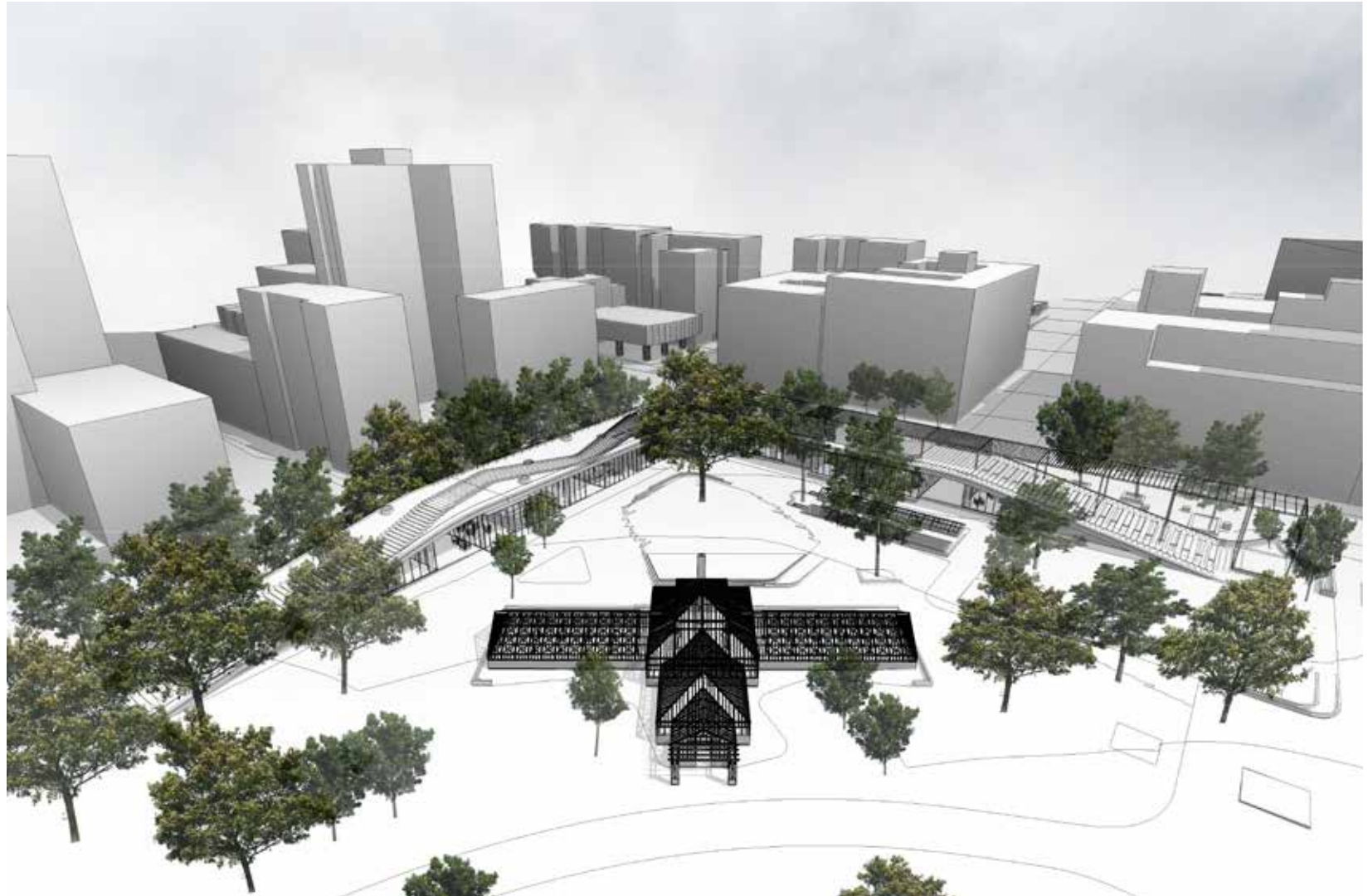


Figure 8.2

8.2_THE POWER OF 10

The theory of the Power of Ten states that a great public place offers a variety of activities which overlap and generate energy (Project for Public Spaces, 2016). The three scales of the theory are expressed in the final project as follows:

8.2.1_REGION INNER CITY JOHANNESBURG, PREVIOUSLY THE 'UITVALGROND'

A region ought to have at least 10 nodal destinations

Inner city Johannesburg already has many destinations, and aims to develop further nodes with a focus on cultural activity, so as to drive the Cultural Capital identity (The City of Johannesburg, 2007). One such destination is Joubert Park, located in the centre of the area once known as the Uitvalgrond. This dissertation explores Joubert Park as an iconic public place and cultural node, building off the presence of JAG and by introducing further interventions, such as the CC.

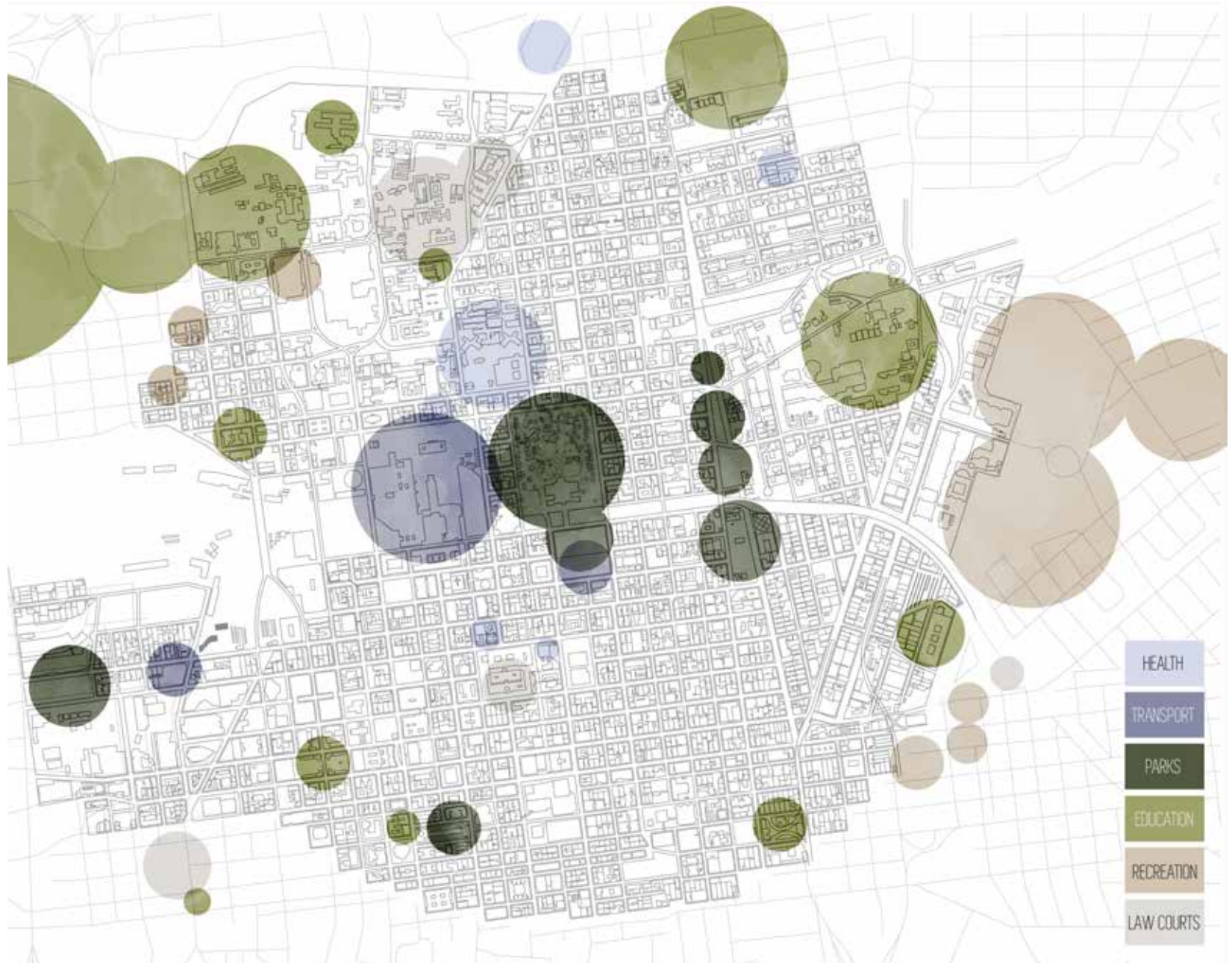


Figure 8.3

8.2.2_DESTINATION THE JOUBERT PARK PRECINCT

A destination should have at least 10 places

Within Joubert Park, there are various places with different qualities and possibilities, from JAG, to the bandstand and central fountain. With the introduction of the CC, the Conservatory Complex will become an exciting creative place, inspiring activity and expression.



Figure 8.4

8.2.3_PLACE

THE CONSERVATORY COMPLEX

A place should offer at least 10 activities, which are layered to create synergy

The Creative Conservatory offers a multitude of activities which are layered to create synergy. Activities build off the clustering of the creative events taking place within the Complex and the cross-pollination between the facilities as well as the formal and informal interaction with the community.

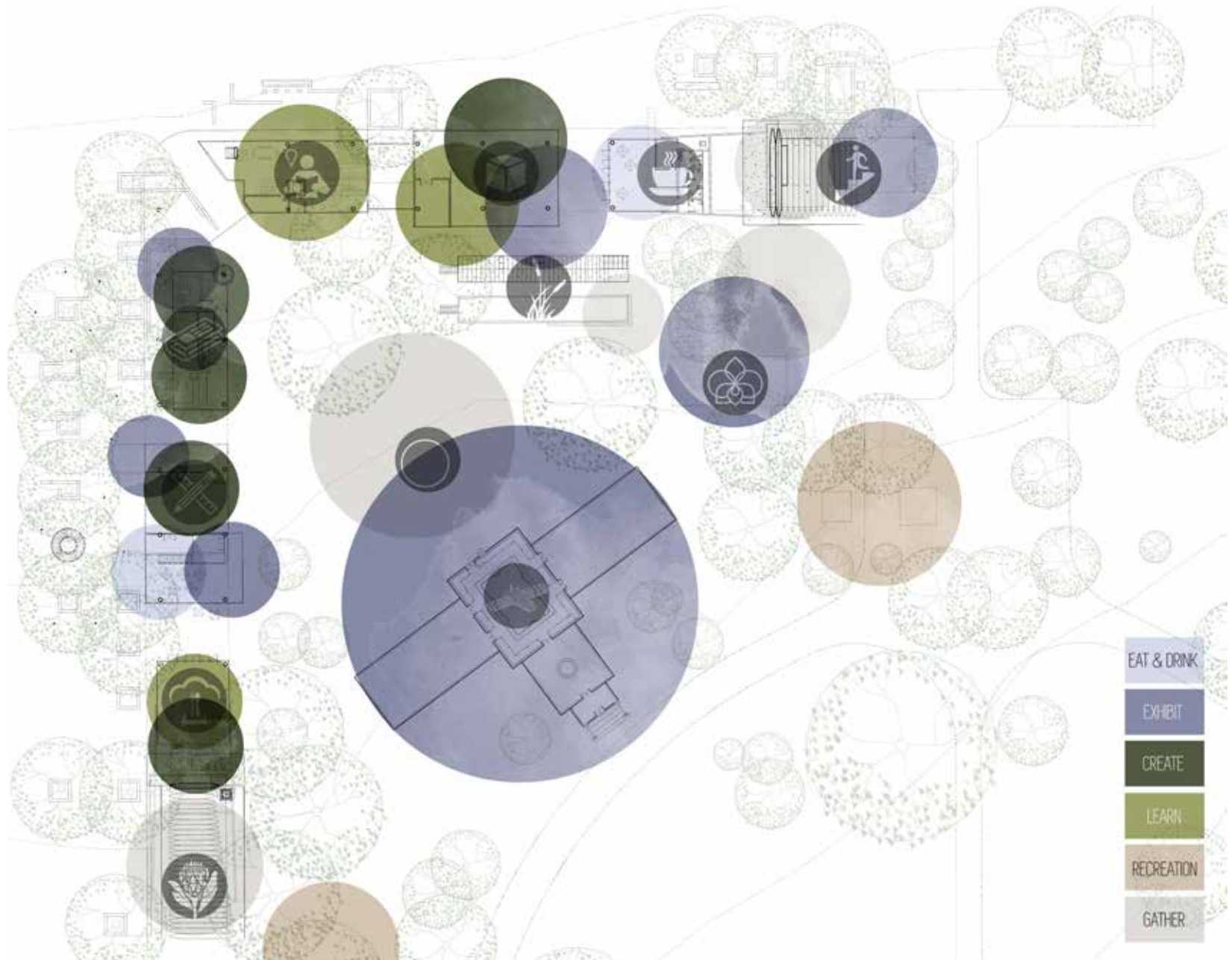


Figure 8.5

8.3_DIAGRAMS

8.3.1_ NEW & EXISTING ARCHITECTURE

The new architectural intervention of the CC (dark purple) frames the Conservatory heritage building (light purple) and the boundary of Joubert Park.

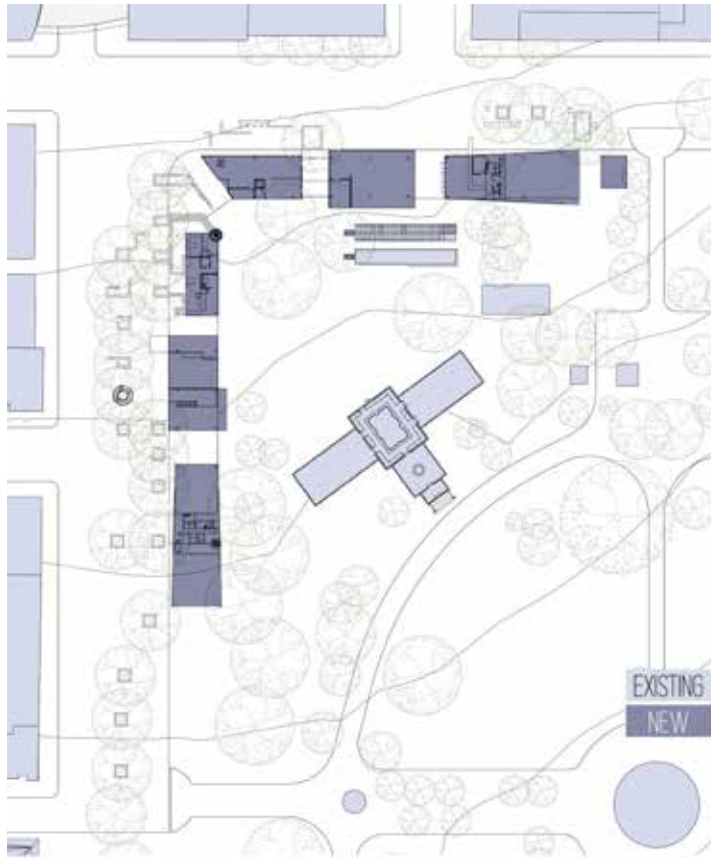


Figure 8.6

8.3.2_ GEOMETRY & RATIOS

The new CC building responds to the City grid, as seen in adjacent buildings and streets, and aligns with the original corner boundary

of Joubert Park. The 9m column grid echoes the width of the heritage conservatory's wings.

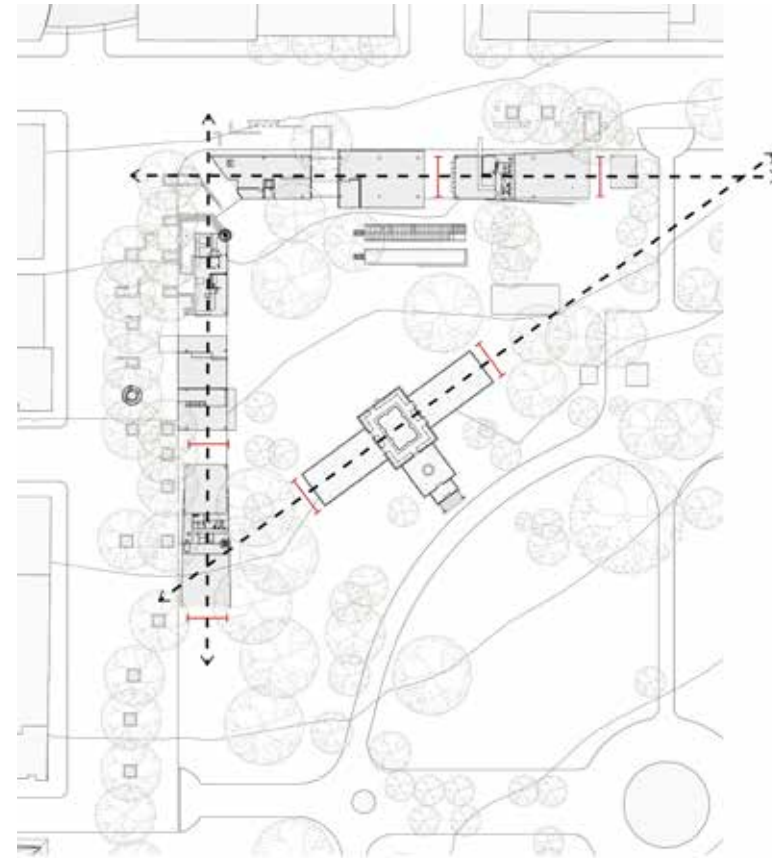


Figure 8.7

8.3.3_ACCESS

Access into the central Conservatory Plaza is approached through primary, secondary, and tertiary access points.

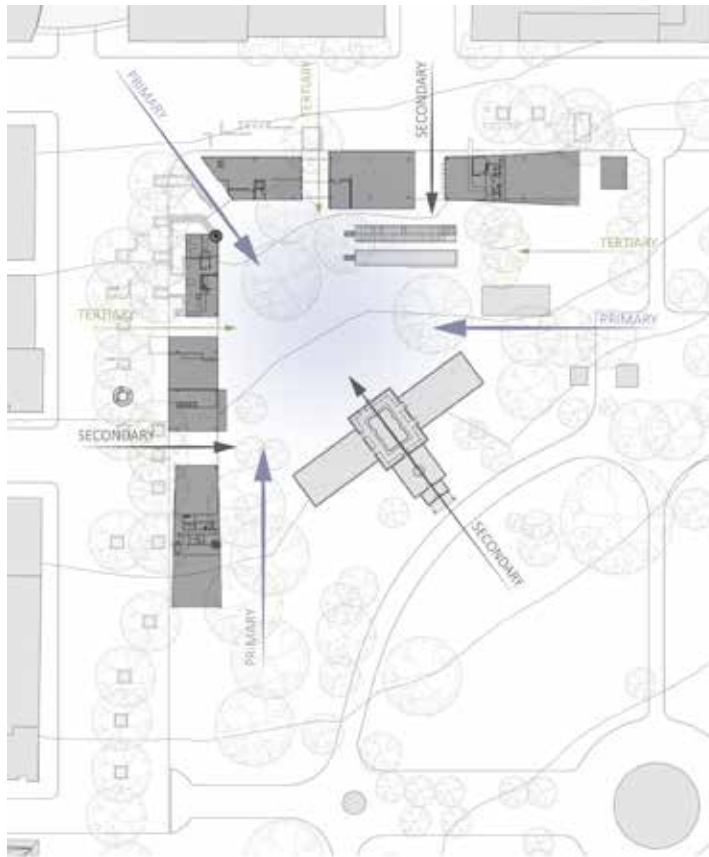


Figure 8.8

8.3.4_PROGRAMME PLACEMENT

The placement of the programmes discussed in Chapter 6 are indicated on the diagram below, with indoor functions in purple and outdoor facilities in green.

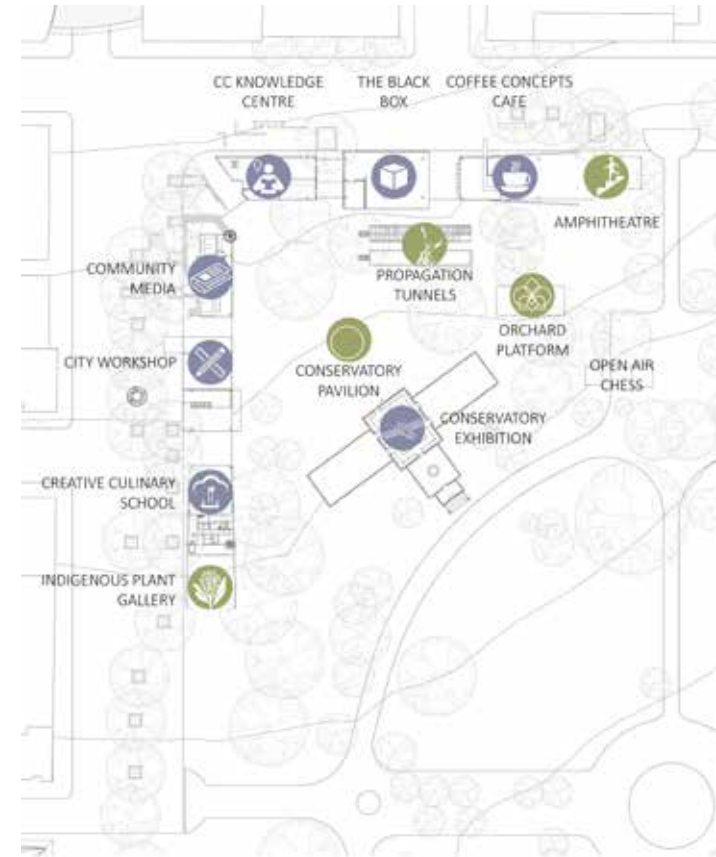


Figure 8.9

8.4_PLANS

8.4.1_SITE PLAN

The CC site plan contextualises the CC in relation to the existing urban fabric (grey), Joubert Park, and Swanepoel's proposed Urban Archive.

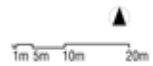
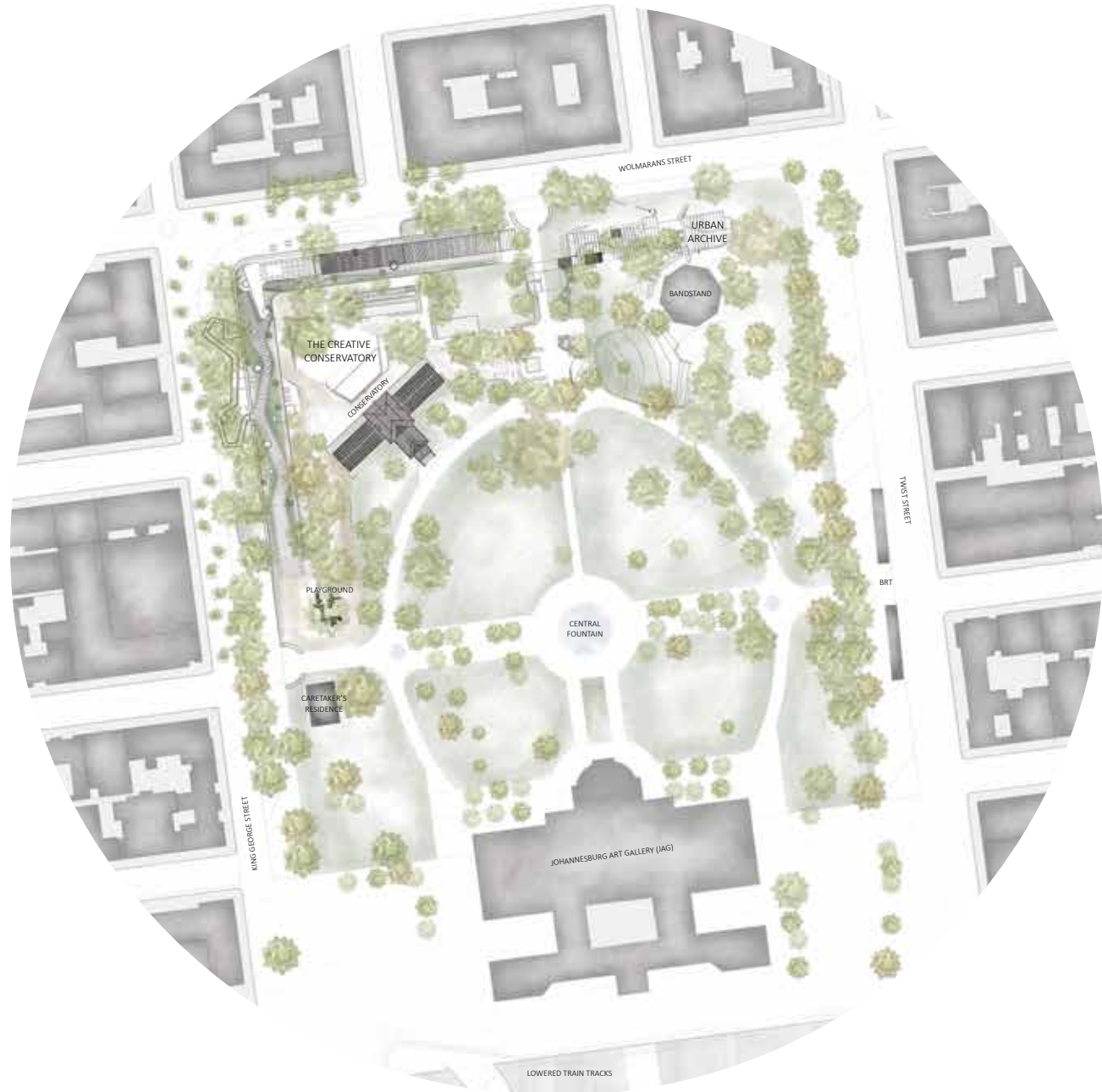


Figure 8.10

8.4.3_ FIRST FLOOR PLAN

The Creative Conservatory Knowledge Centre's meeting space opens up onto the roof terrace, which extends to the east, finally transitioning into the open air amphitheatre. People walking on the planted roof will notice indigenous flora and the fauna they attract. Skylights puncture the roof emitting light into the blocks below. These skylights are designed to accommodate the weight of people walking over them.

The planted roof of the CC emerges from the Park creating a meandering route along a secondary ground plane. The southern entrance onto the roofscape provides seating overlooking the Park and the playground.

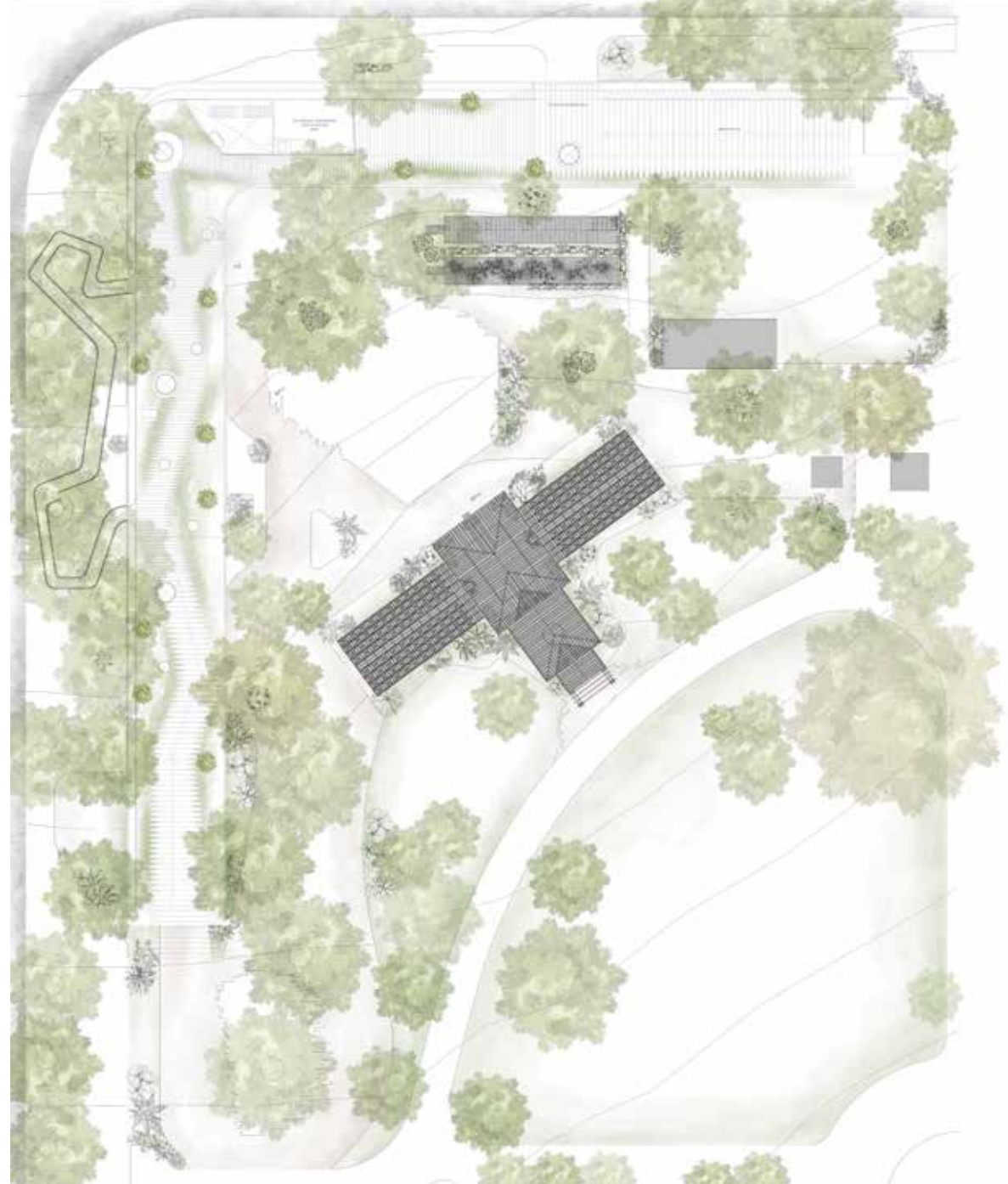


Figure 8.11

8.4.4_ GROUND FLOOR PLAN

The Creative Conservatory defines the corner of Joubert Park and its spatial planning is arranged in blocks, each fulfilling a different programmatic function. Each block will be discussed in detail in this chapter. The blocks are positioned so as to frame the Conservatory and entrances into the central plaza. The planning engages with the street edges, activating the public realm, and spills out into Joubert Park.

Detailed callouts at 1:200 scale to follow.

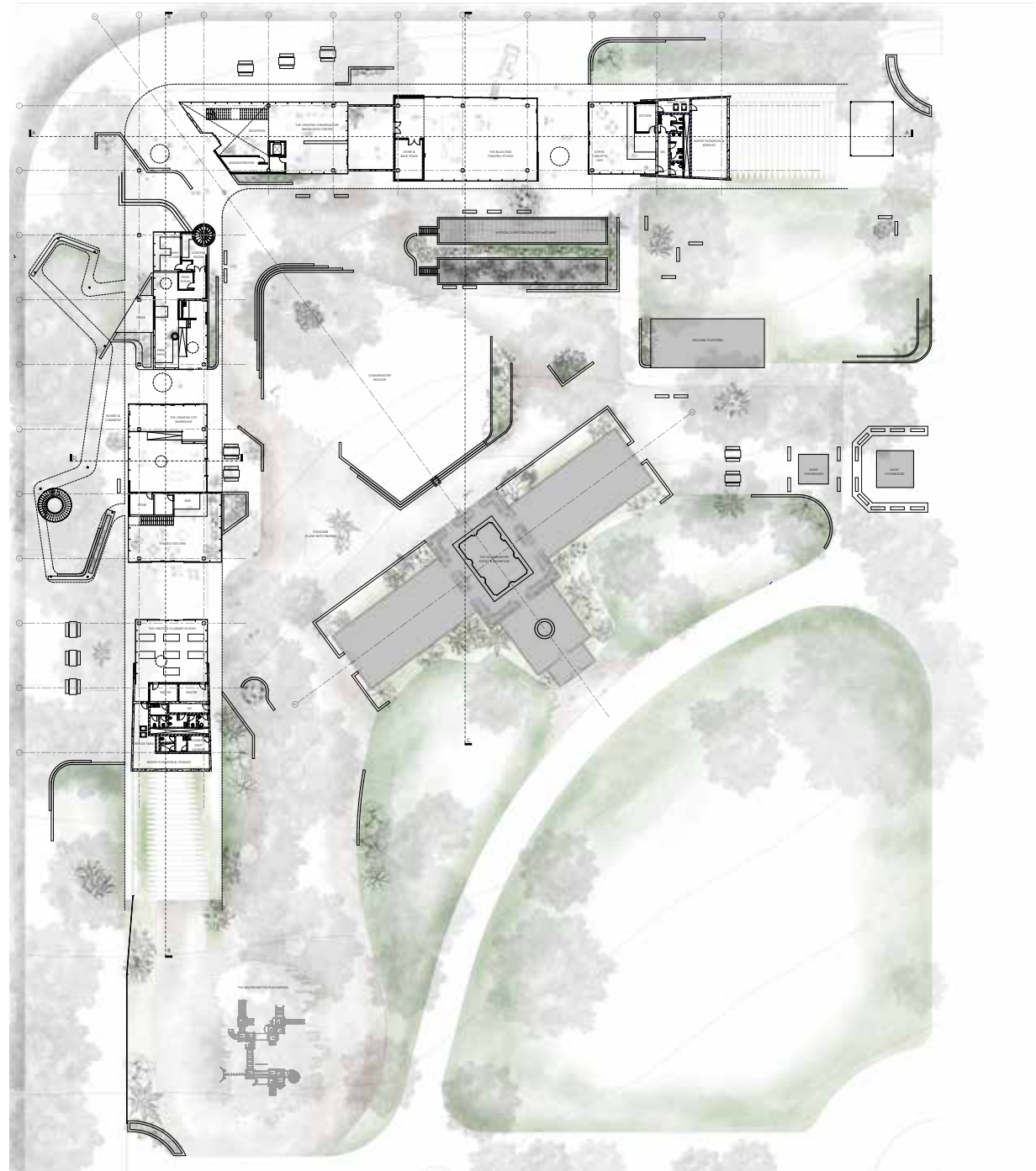
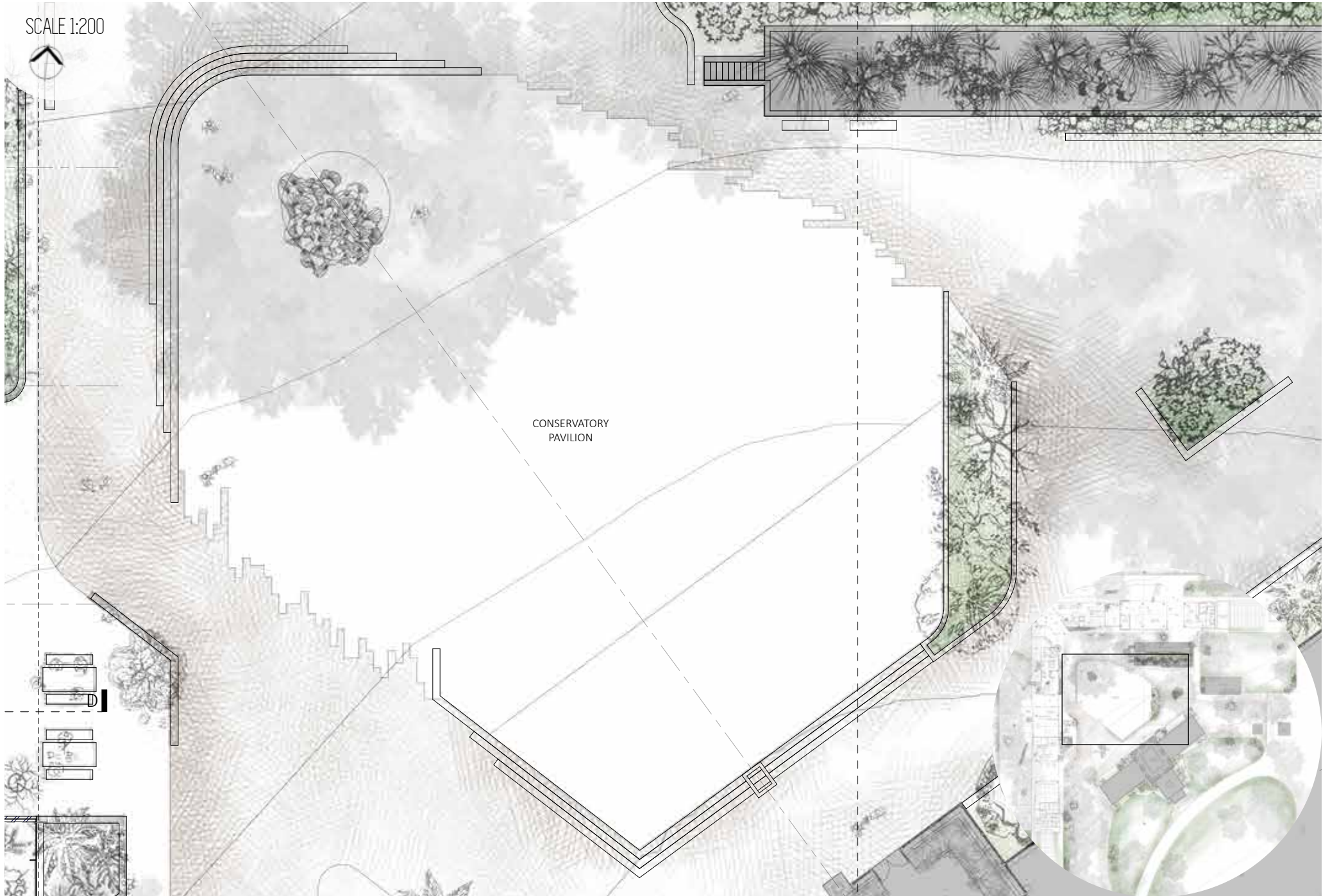
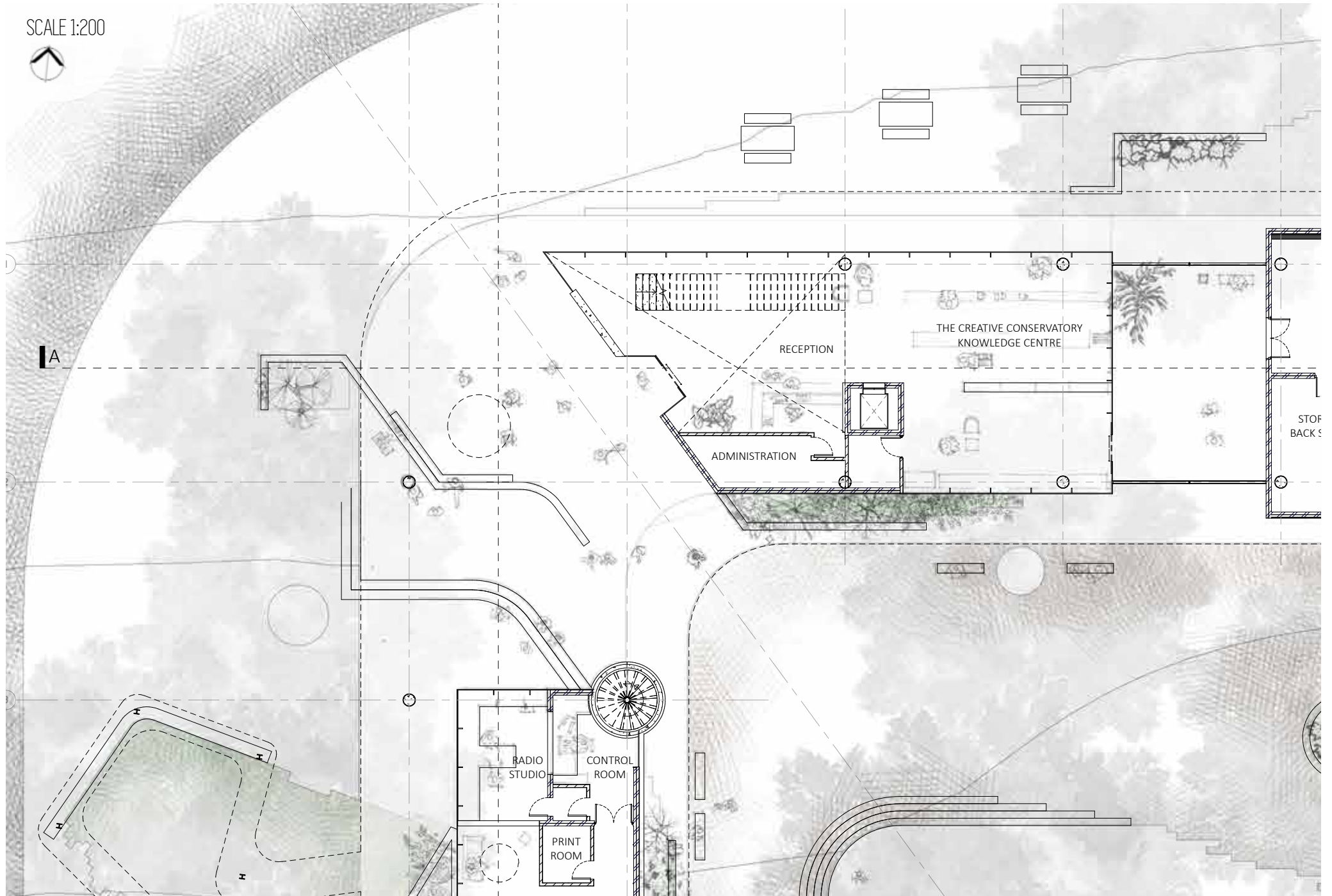


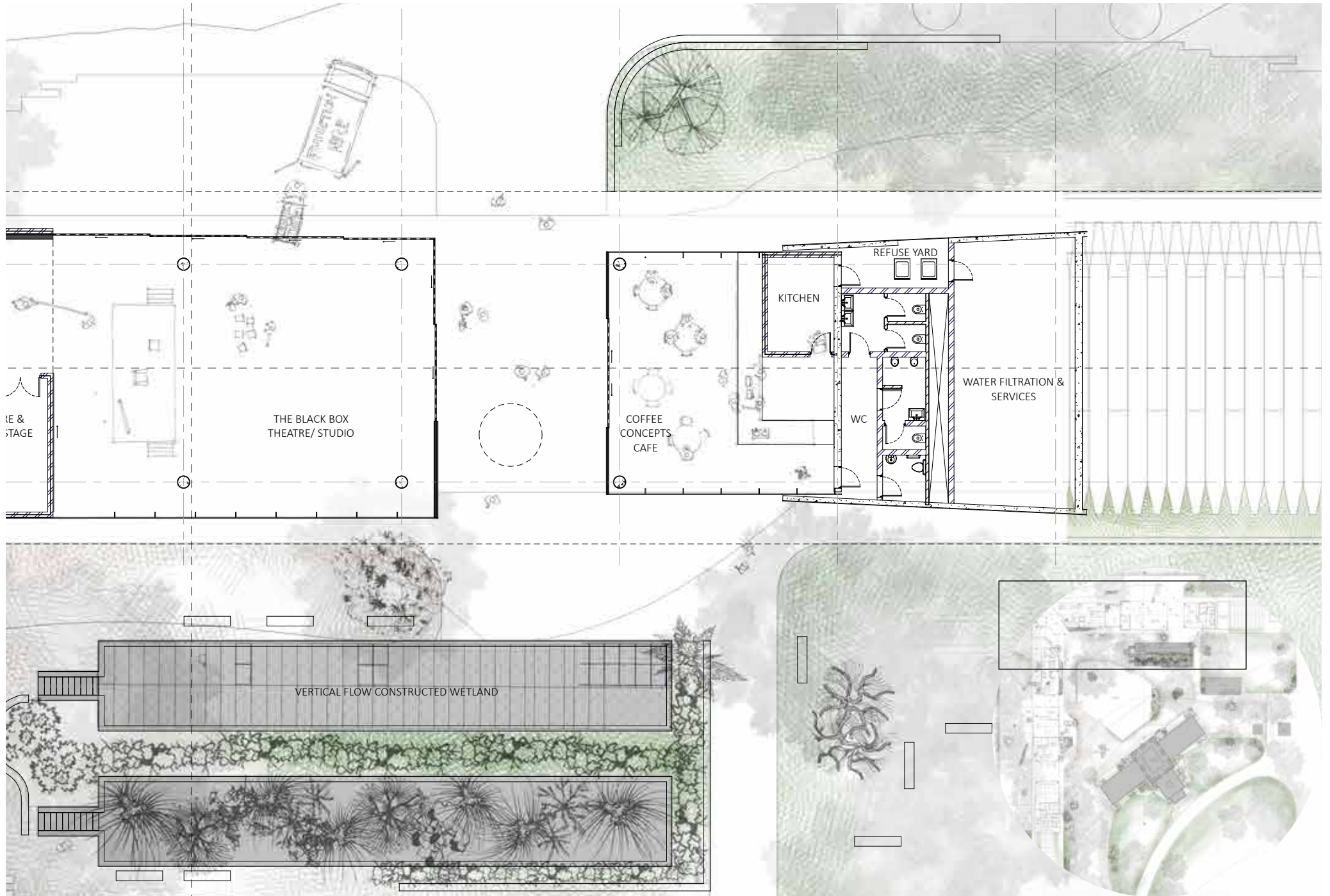
Figure 8.12

SCALE 1:200

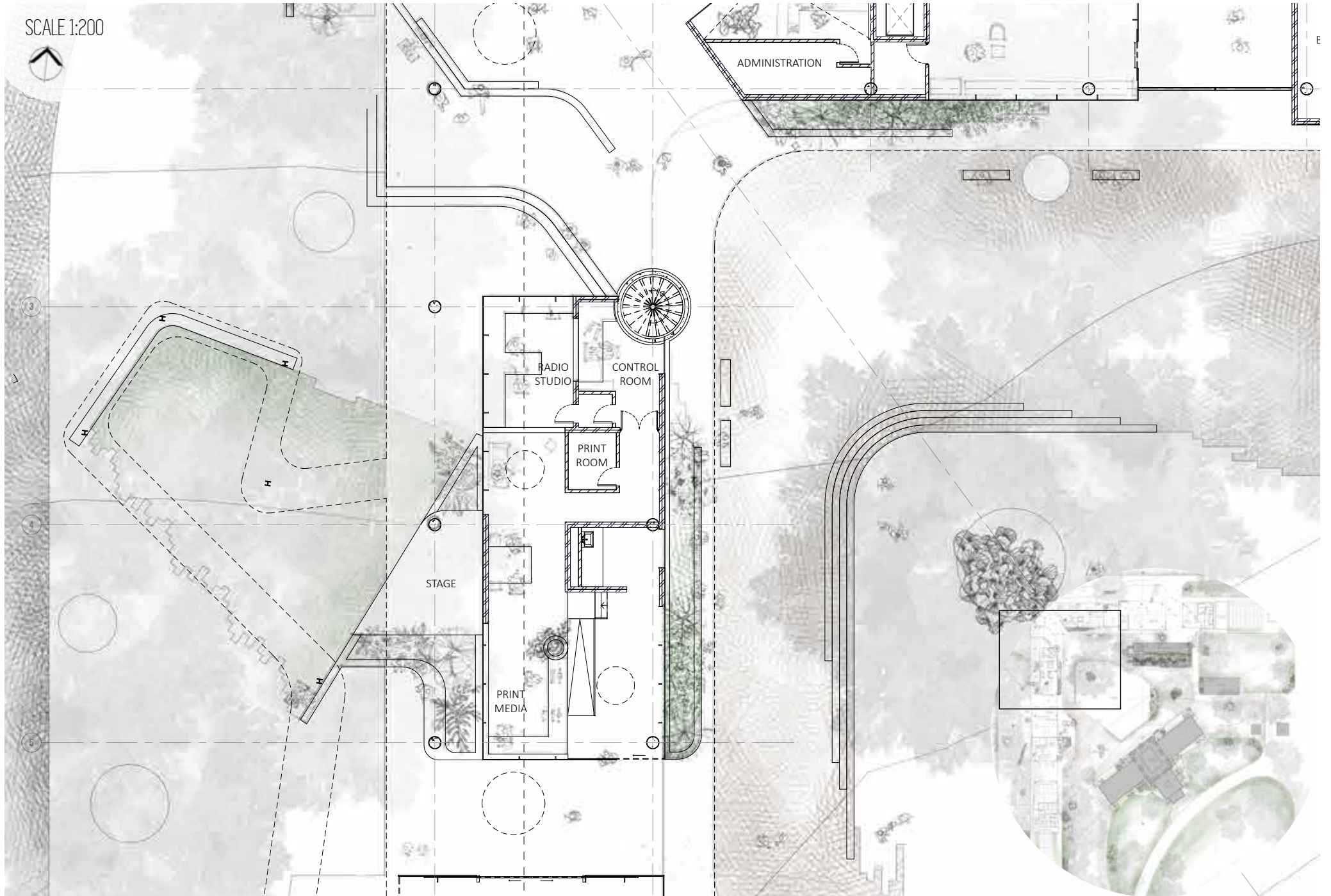


SCALE 1:200

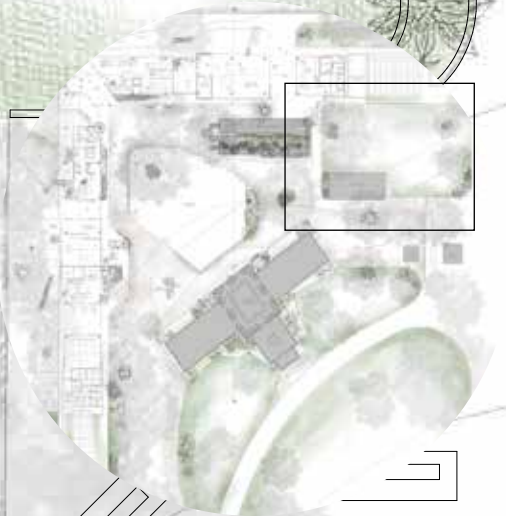
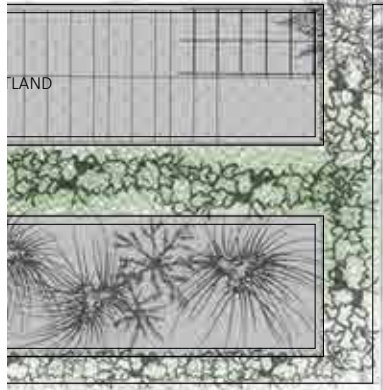




SCALE 1:200



SCALE 1:200



SCALE 1:200



CONSERVATORY
PAVILION

EXHIBIT &
COMMENT

THE CREATIVE CITY
WORKSHOP

D

STORE

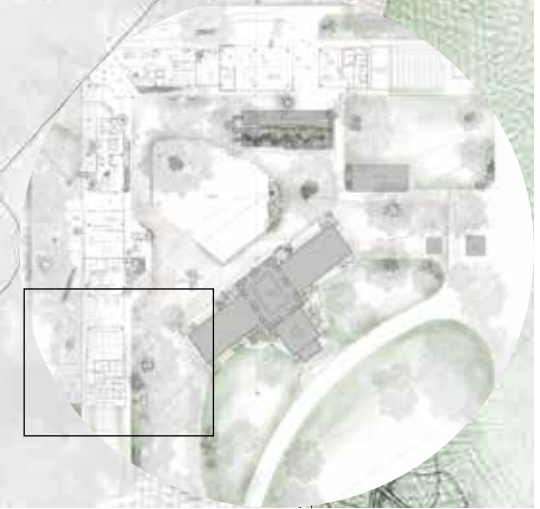
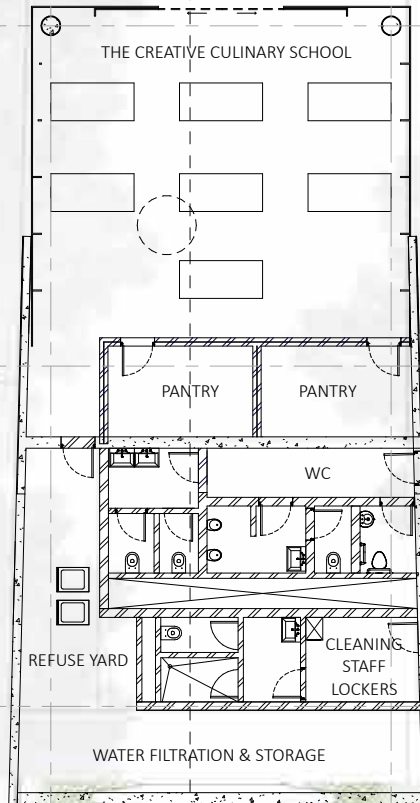
BAR

THE TEST KITCHEN

FOUNTAIN
(FLUSH WITH PAVING)

THE CREATIVE CULINARY SCHOOL

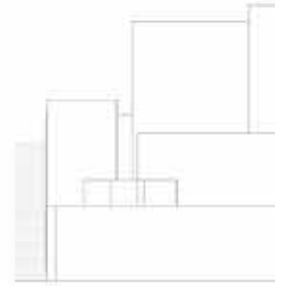
SCALE 1:200



8.5_ SECTIONS

8.5.1_ SECTION A-A NORTH LONGITUDINAL SECTION

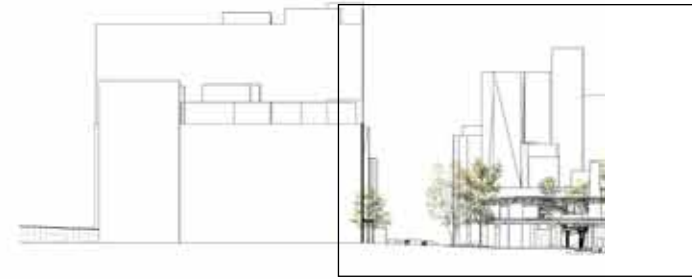
Figure 8.13





8.5.2_ SECTION B-B
WEST LONGITUDINAL SECTION

Figure 8.14

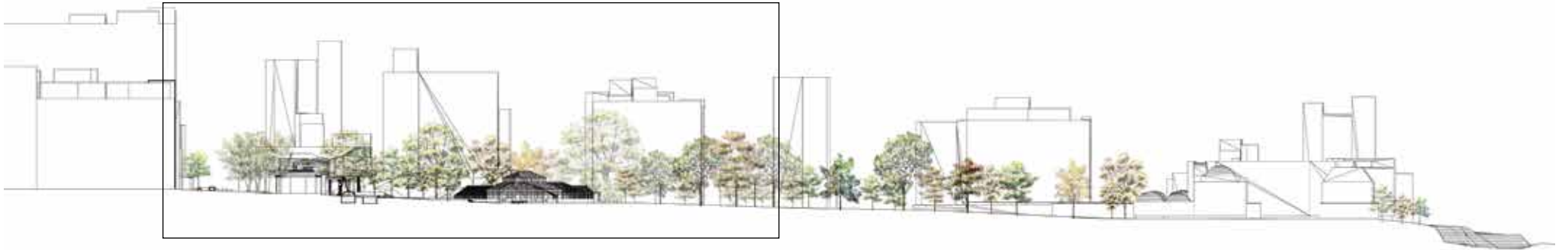




8.5.3_SECTION C-C
CROSS SECTION

Figure 8.15





8.6_ELEVATION

8.6.1_ NORTH ELEVATION

Figure 8.16





8.6.2_ SOUTH ELEVATION

Figure 8.17





8.7_SPATIAL EXPLORATION

8.7.1_PERSPECTIVE KEY

Figure 8.18



8.7.2_ WOLMARANS STREET

Figure 8.19

A



8.7.3_ MAIN ENTRANCE

Figure 8.20

B





8.7.4_CC KNOWLEDGE CENTRE

Figure 8.21



8.7.5_ THE BLACK BOX

Figure 8.22

The Black Box as a Theatre Space



Figure 8.23

The Black Box as a Dance Studio



8.7.6_ THE CONSERVATORY

As the heart of the Conservatory Complex and the primary exhibition space of the CC, the Conservatory is an adaptable place of expression of and engagement with artistic practice. The heritage Conservatory is activated as a valuable public asset and an iconic place of Joubert Park.



E

Figure 8.24
A Luncheon Event



F

Figure 8.26
An Art Exhibition



E

Figure 8.25
A Gathering Space



F

Figure 8.27
A Runway Space

8.8_SYNOPSIS

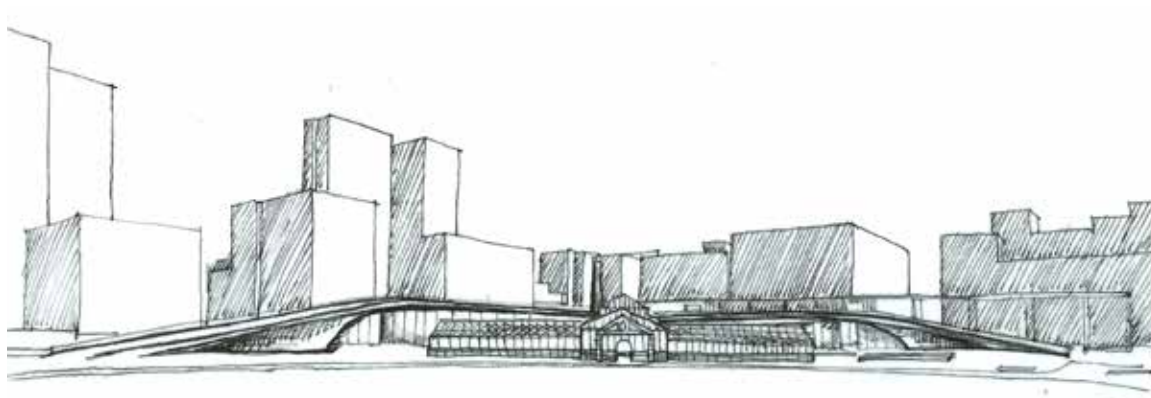


Figure 8.29

The final design of the Creative Conservatory is the product of extensive explorations and iterations, and responds to the research questions posed in chapter 1. The building provides opportunities for diverse arts and culture activities, activates the street edge, energises the Park, engages with pedestrians, and keeps eyes on the street. The CC is a community orientated building in the public realm and enriches the creative milieu of Joubert Park.