



CHAPTER FIVE  
**PROGRAMME**



## 5.1// THE CLIENT & PARTICIPANTS

### The Heritage Portal

As a volunteer-driven organization, the Heritage Portal acts as mediator in facilitating information related to the collective memory of our South African heritage. Being restricted to online communication only, this portal has proved to be successful in collaborating with individuals and collective organisations in collecting and sharing information. Although it is a noble act of preservation, it needs the support of a bigger network to elevate the importance of our national and global heritage.

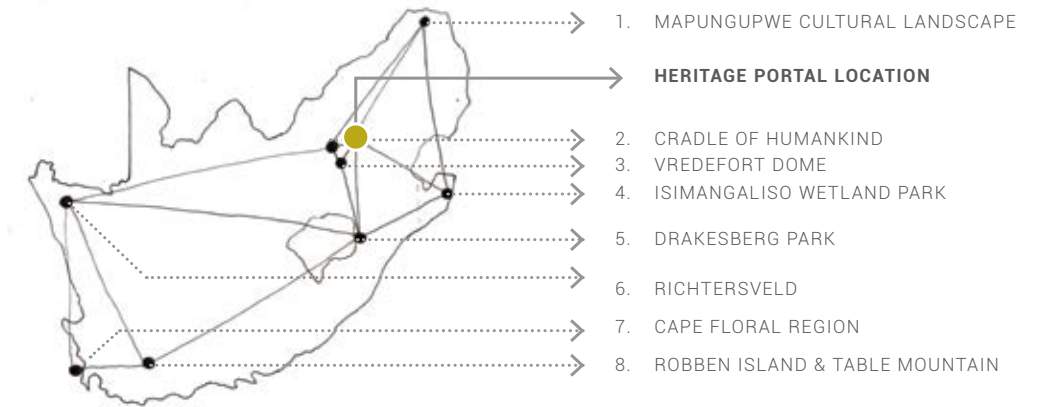
As part of a global mission to encourage the identification, protection and preservation of natural heritage around the world, UNESCO (United Nations Educational, Scientific and Cultural Organization) believes in heritage as a gift from the past to the future (UNESCO 2008:5). This gift is not entrusted to selected individual, group or cultural organizations but is rather a valuable universal asset that belongs to an international community, and therefore to everyone.

In 1972, UNESCO introduced the global Convention concerning the Protection of the World Cultural and Natural Heritage (UNESCO 2008:6). This convention encourages all countries to identify and protect all heritage of local, national and international interest. South Africa has already contributed eight world-class heritage sites that are listed as part of a global heritage community of preservation. These

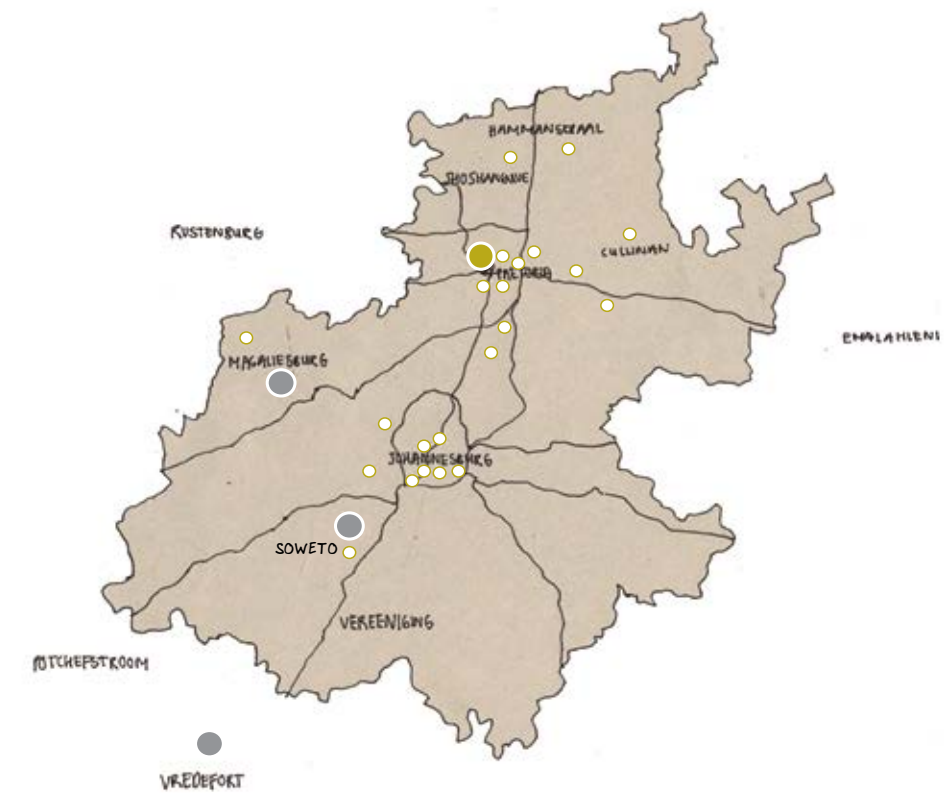
sites are evenly distributed across the country, showcasing the uniqueness of our country through diversification. Given its irreplaceable value to a global audience, the Heritage Portal will facilitate the process of collecting information regarding South Africa's cultural and natural heritage as a touchstone for building on our collective identity.

The client requires a central and neutral platform that would facilitate the process of sharing and engaging in collective heritage through narration. This experiential platform should call on both the national and global heritage communities to not only preserve and restore, but also celebrate our heritage. With emphasis on the experience of place, the story of the site should be carefully narrated across various scales. The programme should facilitate the process of collecting, recording, validating, documenting and exhibiting new information regarding collective heritage.

Using the location of the fort and the adjoining village allows for both a tangible and intangible touchstone that would remind us of our responsibilities as citizens to protect our heritage. It further recognizes the need to reclaim ownership of the abandoned and isolated past, and focus on its rehabilitation into a new memory which encourages a sense of belonging and continuity.



UNESCO WORLD HERITAGE SITES IN SOUTH AFRICA

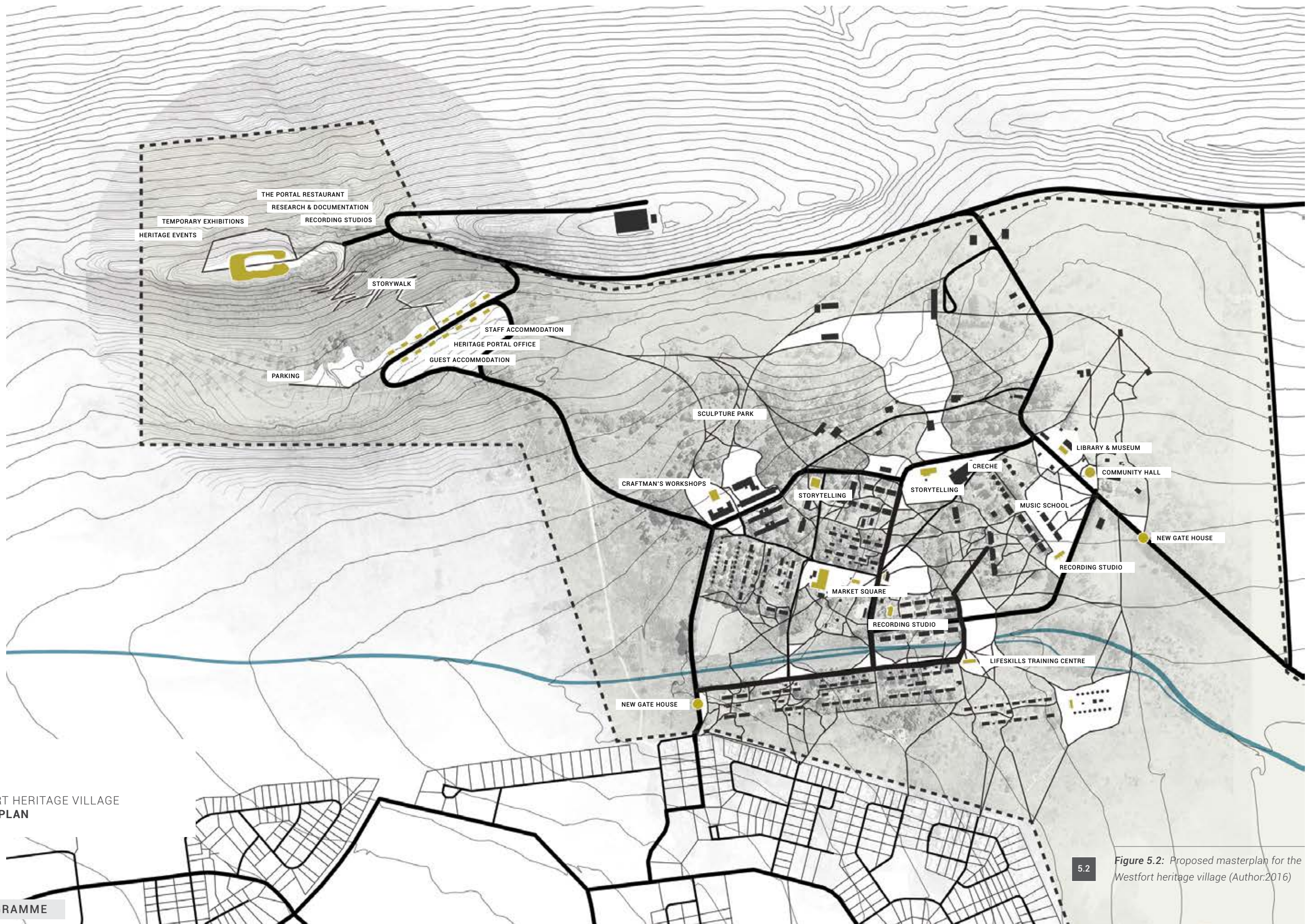


5.1

GAUTENG HERITAGE COMMUNITIES

**Figure 5.1:** Map of South Africa indicating the 8 UNESCO World heritage sites and the distribution of heritage communities across Gauteng (Author 2016)





WESTFORT HERITAGE VILLAGE  
MASTER PLAN

5.2

Figure 5.2: Proposed masterplan for the Westfort heritage village (Author:2016)



## 5.2// PROGRAMME REQUIREMENTS

The main intention of the project is therefore to celebrate our collective South African heritage through the experience of narration.

The experience will be narrated according to a series of events, leading up to the pinnacle of the experience, the beacon of continuity. It is also important that these events do not occur in isolation but are rather integrated in the daily routines of the Westfort Village to encourage equal participation and continuity even further.

The five events of narration are the following:

The five events of narration are as follows:

### Event one

#### *Exchange*

Upon entering the newly established heritage village, visitors are encouraged to participate in the experience of place. Historical, economic, educational and social interaction is integral in this process to encourage equal participation by all parties.

### Event two

#### *Record*

As the visitor progresses through the journey of place, a selection of interventions is dedicated to the recording of new information. The Heritage Portal will be responsible for facilitating formal and informal interviews on site.

### Event three

#### *Validate and document*

New-found information is then researched to clarify its value. Heritage researchers facilitate this process by collaborating with the relevant communities. After validation and confirmation, the information is then documented and prepared for exhibition.

### Event four

#### *Exhibit*

Hosted within the fragile existing ruin, the fort would act as a background to the progression from the past to the present, and hopefully the future. Temporary exhibitions are held within the latter, informing and educating the collective on the value of our continuous South African heritage.

### Event five

#### *Celebrate*

The fort itself would act as the pinnacle of this experiential narrative journey. Events such as music festivals and seminars will be held in the enclosed courtyard to enhance its former function of protection. A new beacon anchors both the west and our lost heritage as a place of great value.

**Figure 5.3:** Diagram of stakeholder involvement throughout the program (Author 2016)



*Main Intention*  
TO CELEBRATE OUR COLLECTIVE HERITAGE  
THROUGH THE EXPERIENCE OF NARRATION





- ① Event one - exchange
- ② Event two - record
- ③ Event three - validate & document
- ④ Event four - exhibit
- ⑤ Event five - celebrate

⊕  
 WESTFORT HERITAGE VILLAGE  
 SEQUENCE OF EVENTS



5.4 Figure 5.4: Proposed sequence of events at Westfort heritage village (Author:2016)



Stakeholders involved

- The Heritage Portal
- Westfort village
- Public works & City Council
- UNESCO & tourists
- South African citizens
- Heritage organisations
- Heritage researchers

# Event one EXCHANGE

FUNCTION

REQUIREMENTS



| FUNCTION  | REQUIREMENTS  | m <sup>2</sup>   |
|---|---|--|
| <b>1. Gate houses (x2)</b><br>Ticket office<br>Security check point<br>Ablutions  | <span style="color: #800000;">●</span> (1 security guard & 1 admin person) x 2<br>Cashier safe<br>Security monitoring equipment<br>1 wc, 1hwb, 1 shower (x2)  | 4 m <sup>2</sup><br>2 m <sup>2</sup><br>10 m <sup>2</sup>  |
| <b>2. Westfort Library &amp; Museum</b><br>(Former Post Office)   | * Master plan only  |  |
| <b>3. Lifeskills training centre</b><br>(Former School building)  | * Master plan only  |  |
| <b>4. Westfort market square</b><br>Restaurants, markets, deli's & shops  | * Master plan only  |  |
| <b>5. Guest accommodation (14 existing)</b><br>2 Bedroom & 1 bathroom<br>Kitchenette & Living area<br>Verandah and shared garden                                    | <span style="color: #800000;">●</span> Sleeps 14-28 guests, 3x cleaning staff, 2x gardeners<br><span style="color: #6b8e23;">●</span> Bedroom furniture, 1xwc, 1xhwb, 1xshower<br><span style="color: #34495e;">●</span> Off-grid energy & water requirements<br>Visual access to Fort & heritage trail   | 30 m <sup>2</sup><br>18 m <sup>2</sup><br>12 m <sup>2</sup>  |
| <b>6. Heritage Portal offices</b><br>Information desk<br>Open plan offices<br>Meeting room<br>Staff kitchenette<br>Storage<br>Cleaning store room<br>Ablutions      | <span style="color: #c44e52;">●</span> 2x reception, 4x administration, 1x cleaning<br><span style="color: #800000;">●</span> Reception foyer, waiting area, visual access,<br>Administration, visual access<br>Private, acoustics, visual access<br>Off-grid energy & water requirements<br>Document deliveries & collection<br>Cleaning equipment for accommodation units<br>(Unisex) 3 wc, 2hwb  | 17 m <sup>2</sup><br>35 m <sup>2</sup><br>10 m <sup>2</sup><br>10 m <sup>2</sup><br>20 m <sup>2</sup><br>2,5 m <sup>2</sup><br>14 m <sup>2</sup> |
| <b>7. Staff accommodation (14 existing)</b><br>* same as per guest accommodation  | <span style="color: #800000;">●</span> Sleeps 14-35 Westfort community members  | 60 m <sup>2</sup>  |
| <b>8. The Portal Restaurant</b><br>Entertaining & seating area<br>Cooking facilities<br>Scullery<br>Cold & dry storage<br>Staff ablutions & washing rooms<br>Refuse | <span style="color: #c44e52;">●</span> 6x operation staff, 6x kitchen staff, 2x cleaning staff<br><span style="color: #800000;">●</span> max 100 guests, indoor & outdoor (shaded with views)<br><span style="color: #c4c4c4;">●</span> water & energy connection, circulation, ventilation<br><span style="color: #a9a9a9;">●</span> wash-up (water & energy connection, storage)<br><span style="color: #6b8e23;">●</span> walk in fridge & pantry (access & energy connection)<br><span style="color: #34495e;">●</span> 2 wc, 2hwb, 1 shower<br>Service access, ventilation | 110 m <sup>2</sup><br>80 m <sup>2</sup><br>50 m <sup>2</sup><br>25 m <sup>2</sup><br>25 m <sup>2</sup><br>10 m <sup>2</sup>                      |



5.5 Figure 5.5: Allocation of event one at Westfort heritage village (Author:2016)



# Event two RECORD

### Stakeholders involved

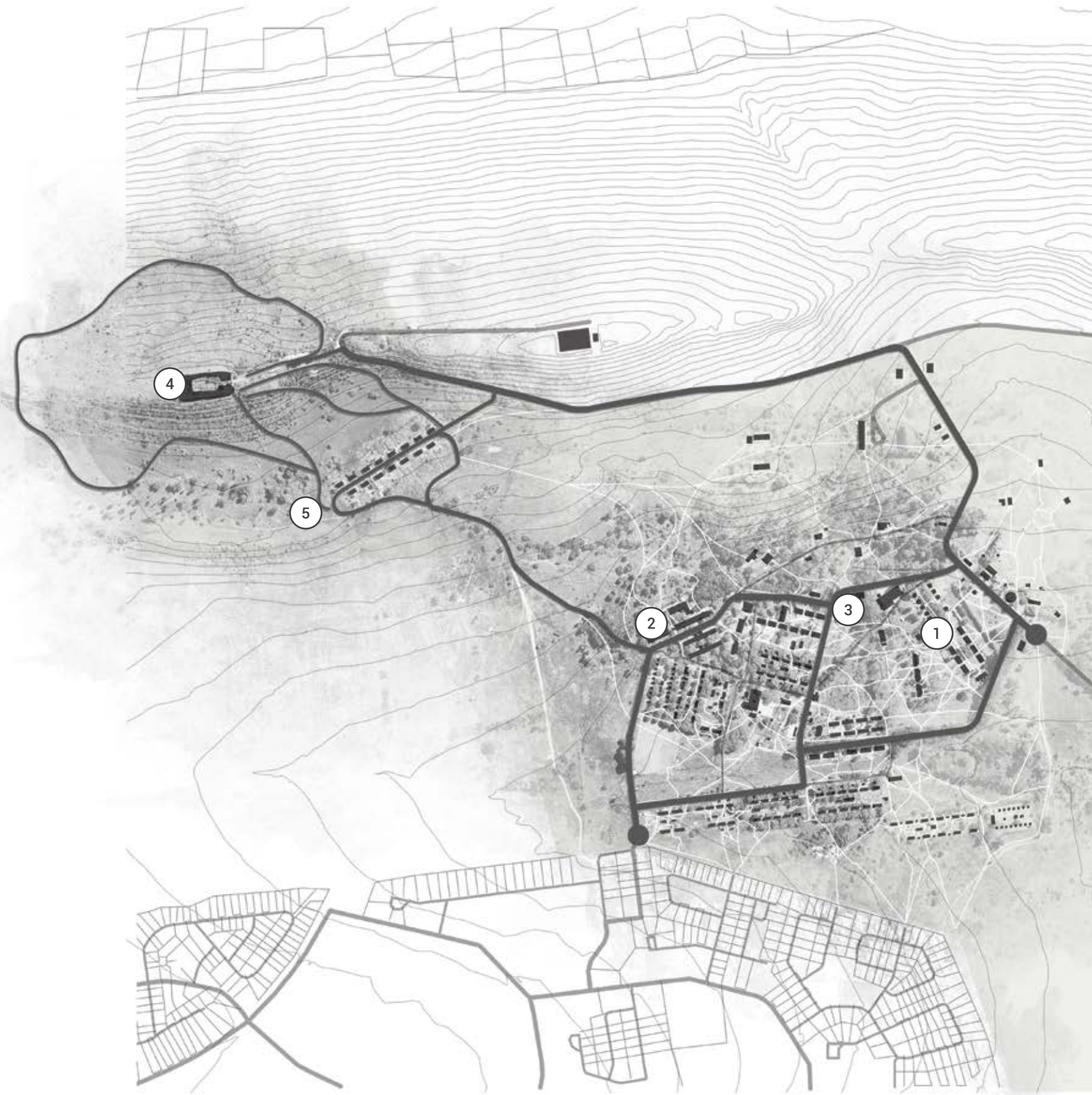
- The Heritage Portal
- Westfort village
- Public works & City Council
- UNESCO & tourists
- South African citizens
- Heritage organisations
- Heritage researchers

### FUNCTION

### REQUIREMENTS



| FUNCTION   | REQUIREMENTS   | m <sup>2</sup>  |
|--|--|---|
| 1. Music school<br>(Former school hall)  | * Master plan only   |   |
| 2. Craftman's workshops<br>(Former prison block)   | * Master plan only   |   |
| 3. Storytelling<br>(Former Orthodox church)  | * Master plan only   |   |
| 4. Recording studios<br>Informal reflection<br>Group discussions<br>Digital archive<br>Storywalls<br>Service and control room<br>Ablutions | <ul style="list-style-type: none"> <li><span style="color: #c4c400;">●</span> 2x partially enclosed studios (acoustics, light, comfort)</li> <li><span style="color: #2e7d32;">●</span> 1x studio (acoustics, light, comfort)</li> <li><span style="color: #6b8e23;">●</span> 1x studio for digital presentation (visual access, light, acoustics)</li> <li>Visible, waterproof, light</li> <li>Open and accessible (acoustics)</li> <li>(see sanitary installations)</li> </ul> | <ul style="list-style-type: none"> <li>20 m<sup>2</sup></li> <li>20 m<sup>2</sup></li> <li>50 m<sup>2</sup></li> <li>10 m<sup>2</sup></li> <li>30 m<sup>2</sup></li> </ul>      |
| 5. Parking<br>Heritage Portal staff<br>Staff Accommodation<br>Accommodation units<br>Visitors<br>Spill over parking (large events)         | <ul style="list-style-type: none"> <li><span style="color: #c4c400;">●</span> 4 bays at office (paved)</li> <li><span style="color: #800000;">●</span> 2 bays per accommodation unit (28) (paved)</li> <li><span style="color: #c4c400;">●</span> 2 bays per accommodation unit (28) (paved)</li> <li><span style="color: #6b8e23;">●</span> 40 bays (paved)</li> <li><span style="color: #2e7d32;">●</span> open grassland to accommodate 500 vehicles (unpaved)</li> </ul>     | <ul style="list-style-type: none"> <li>50 m<sup>2</sup></li> <li>350 m<sup>2</sup></li> <li>350 m<sup>2</sup></li> <li>500 m<sup>2</sup></li> <li>6250 m<sup>2</sup></li> </ul> |





**Stakeholders involved**

- The Heritage Portal
- Westfort village
- Public works & City Council
- UNESCO & tourists
- South African citizens
- Heritage organisations
- Heritage researchers

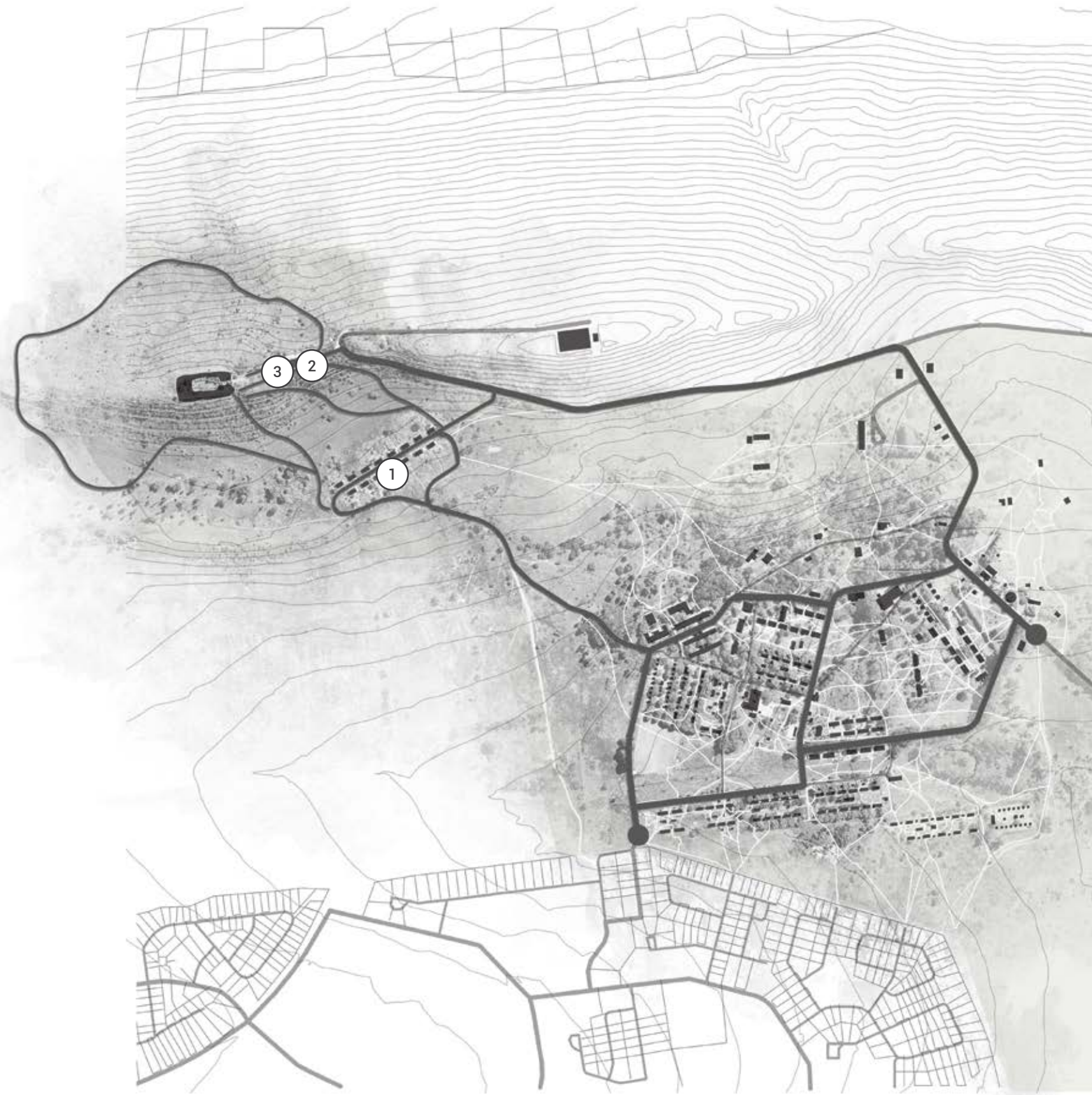
# Event three VALIDATE & DOCUMENT

FUNCTION



REQUIREMENTS

| FUNCTION   | REQUIREMENTS  | m <sup>2</sup>  |
|--|---|---|
| <b>1. Heritage Portal offices</b><br>Information collection & distribution   | * see exchange (page ?)   |   |
| <b>2. Research &amp; validation</b><br>* Reception desk<br>* Storage<br>Open plan office<br>Kitchenette<br>Ablutions | <span style="color: #c44e52;">●</span> <span style="color: #800000;">●</span><br><b>2 x reception, 8 researchers, 2 cleaning staff, visitors</b><br>* Receptionist (visual access & circulation)<br>* Information & recording deliveries (access & circulation)<br>Seating, research access & equipment<br>Off-grid energy & water requirements<br>(see sanitary installations) | 6 m <sup>2</sup><br>20 m <sup>2</sup><br>80 m <sup>2</sup><br>20 m <sup>2</sup> |
| <b>3. Documentation</b><br>Discussion rooms & meetings<br>Print room & Exhibition preparation                        | <span style="color: #c44e52;">●</span> <span style="color: #800000;">●</span> <span style="color: #a6a6a6;">●</span> <span style="color: #654321;">●</span> <span style="color: #006400;">●</span><br>Seating, acoustics, flexible, informal<br>Digital equipment, storage, workspace   | 30 m <sup>2</sup><br>45 m <sup>2</sup><br>m <sup>2</sup>                        |





# Event four EXHIBIT

### Stakeholders involved

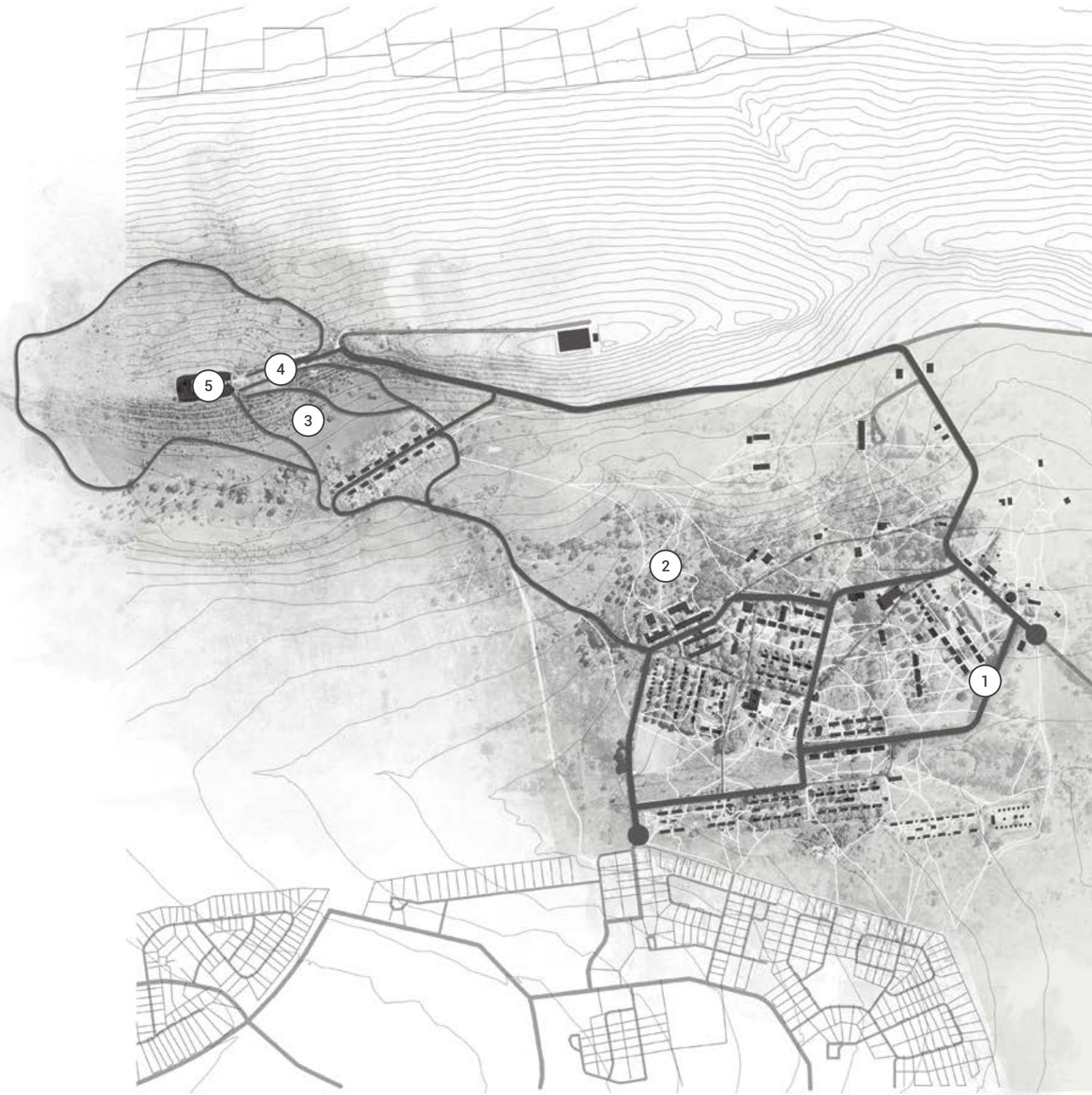
- The Heritage Portal
- Westfort village
- Public works & City Council
- UNESCO & tourists
- South African citizens
- Heritage organisations
- Heritage researchers

## FUNCTION

## REQUIREMENTS



| FUNCTION   | REQUIREMENTS  | m <sup>2</sup>  |
|--|---|---|
| 1. Local Art gallery<br>(Former Hospital building)   | * Master plan only  |   |
| 2. Westfort sculpture park<br>Exhibition, seating, play  | * Master plan only  |   |
| 3. Storywalk<br>Walking trails<br>Information display<br>Seating<br>Viewing platforms  | <ul style="list-style-type: none"> <li><span style="color: #800000;">●</span> Daily use = 40 users</li> <li><span style="color: #c44e52;">●</span> Partially paved surface (waterdrainage)</li> <li><span style="color: #c44e52;">●</span> Signage,</li> <li><span style="color: #4b4b4b;">●</span> Landscape integration (waterproofing)</li> <li><span style="color: #4b4b4b;">●</span> Seating, orientation, visibility</li> </ul>   | 1 km walk   |
| 4. The Portal Library<br>* Reception desk<br>Information display<br>Reading & seating<br>Archives<br>* Digital research<br>Children storytelling<br>Educational playground | <ul style="list-style-type: none"> <li><span style="color: #c44e52;">●</span> Daily use = 40 users (including staff)</li> <li><span style="color: #c44e52;">●</span> * Librarian &amp; sales desk (visual access &amp; circulation)</li> <li><span style="color: #800000;">●</span> Bookshelves (light quality, visual access)</li> <li><span style="color: #c44e52;">●</span> Tables &amp; seating (light quality)</li> <li><span style="color: #c44e52;">●</span> Exhibition &amp; reading of heritage material (safety, light)</li> <li><span style="color: #4b4b4b;">●</span> * connection with research office</li> <li><span style="color: #4b4b4b;">●</span> Indoor &amp; outdoor options (safety, visual access)</li> <li><span style="color: #4b4b4b;">●</span> Informative landscape integration (safety, visual access)</li> </ul> | 12 m <sup>2</sup><br>80 m <sup>2</sup><br>20 m <sup>2</sup><br>35 m <sup>2</sup><br>15 m <sup>2</sup><br>25 m <sup>2</sup><br>45 m <sup>2</sup> |
| 5. Temporary exhibition rooms<br>Rotating display technology<br>Information display<br>Interactive display   | <ul style="list-style-type: none"> <li><span style="color: #4b4b4b;">●</span> Daily use = 40 users</li> <li><span style="color: #4b4b4b;">●</span> Wall, floor &amp; roof connections (no permanent attachment)</li> <li><span style="color: #4b4b4b;">●</span> Light quality &amp; circulation</li> <li><span style="color: #4b4b4b;">●</span> Digital interventions (energy, acoustics, light)</li> </ul>   | 370 m <sup>2</sup>  |



5.8 Figure 5.8: Allocation of event four at Westfort heritage village (Author:2016)



# Event five CELEBRATE

- Stakeholders involved**
- The Heritage Portal
  - Westfort village
  - Public works & City Council
  - UNESCO & tourists
  - South African citizens
  - Heritage organisations
  - Heritage researchers

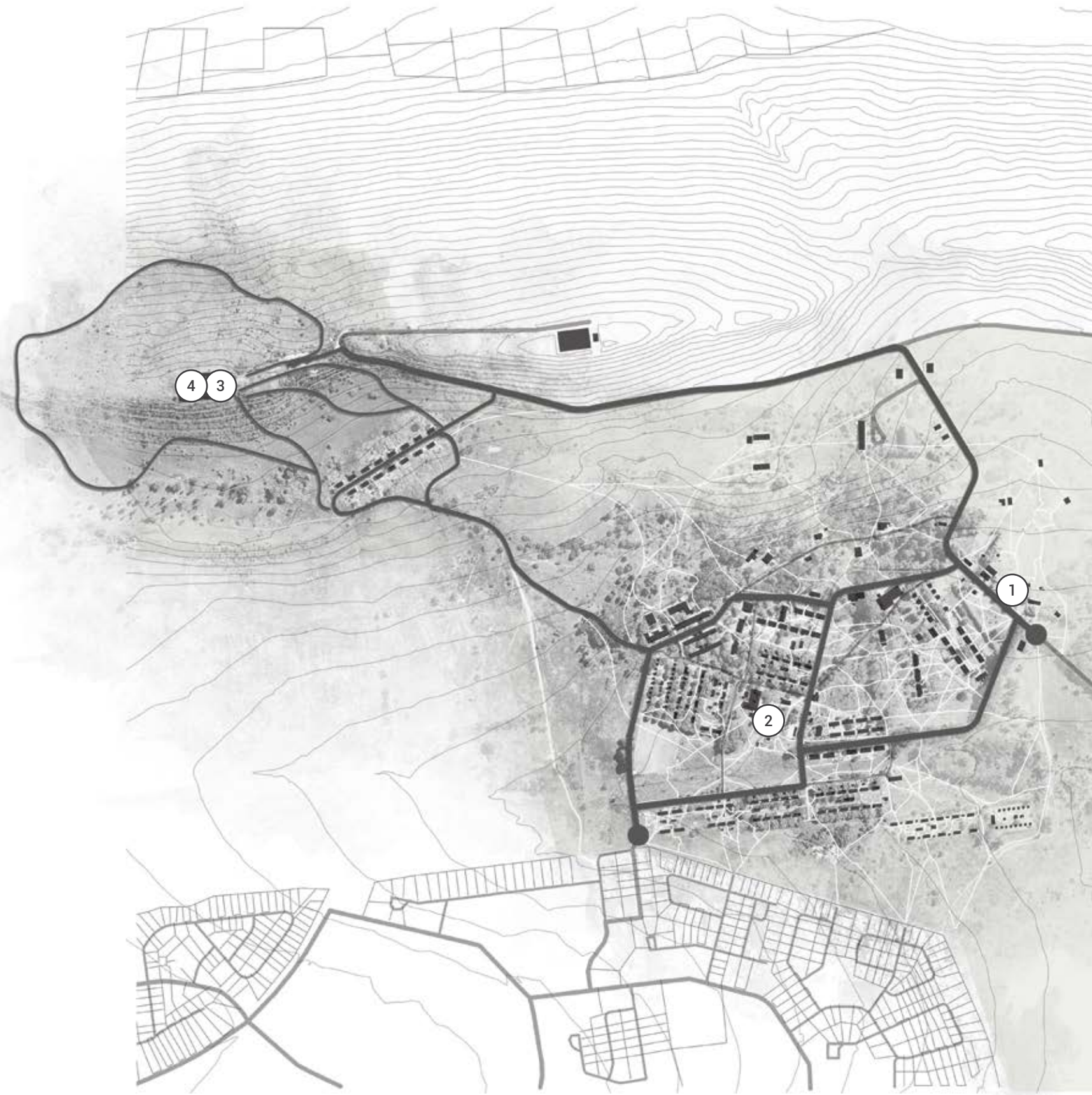
FUNCTION

REQUIREMENTS

*Validate & Document*

m<sup>2</sup>

|   |  |  |   |
|---|--|--|---|
| 1. Community hall<br>(Former administration building)   |  | * Master plan only   |   |
| 2. Market square  |  | * Master plan only   |   |
| 3. National & local heritage events<br>Performance stage<br>Seating   | <span style="color: #c49a3d;">●</span><br><span style="color: #800000;">●</span><br><span style="color: #c4c49a;">●</span><br><span style="color: #6b8e23;">●</span><br><span style="color: #2e7d32;">●</span> | Montly events = 800 users<br>Visual access, safety, acoustics<br>Floor integration (use on demand) (500 removable seats)   | 50 m <sup>2</sup><br>800 m <sup>2</sup>   |
| 4. Beacon of Continuity<br>Vertical circulation<br>Viewing platforms & equipment<br>Information display<br>Lighthouse<br>Seating    | <span style="color: #c49a3d;">●</span><br><span style="color: #800000;">●</span><br><span style="color: #c4c49a;">●</span><br><span style="color: #6b8e23;">●</span><br><span style="color: #2e7d32;">●</span> | Daily use = 40 users, Montly events = 800 users (median = 60)<br>Stairs & Ramp (Safety & Visibilty)<br>Viewpoints, landscape integrated telescopes (safety)<br>Landscape integrated<br>Artificial light, visibility, materiality<br>Landscape integrated   | 24 m <sup>2</sup><br>450 m <sup>2</sup><br>10 m <sup>2</sup>                      |
| * Sanitary installations<br>Additional ablutions (entrance)<br>Portal Restaurant<br>Portal Offices & Library<br>Fort (large events) | <span style="color: #c49a3d;">●</span><br><span style="color: #800000;">●</span><br><span style="color: #c4c49a;">●</span><br><span style="color: #6b8e23;">●</span><br><span style="color: #2e7d32;">●</span> | Daily use = 60 users, Montly events = 600 users<br>Women (2 wc, 2 hwb), Men (2 urinals, 1 wc, 2 hwb), M.i.p<br>Women (4 wc, 4 hwb), Men (3 urinals, 1 wc, 4 hwb), M.i.p<br>Women (4 wc, 4 hwb), Men (3 urinals, 1 wc, 4 hwb), M.i.p<br>Women (10 wc, 5 hwb), Men (3 urinals, 2 wc, 3 hwb), M.i.p | 40 m <sup>2</sup><br>70 m <sup>2</sup><br>70 m <sup>2</sup><br>105 m <sup>2</sup> |
| * Service deliveries<br>Drop-off & Loading zone<br>General maintenance<br>Kitchen deliveries  |  | Road access, turning circle, circulation<br>Access to services, durability of materials<br>Access, circulation, removal of refuse  |   |
| * Service distribution<br>Energy<br>Water<br>Sewerage   |  | Solar PV panels on northern ridge or roofs, battery room<br>Potable water from reservoir, rain water harvesting, grey water<br>French drain, westfort village connection to larger system  |   |



5.9 Figure 5.9: Allocation of event five at Westfort heritage village (Author:2016)



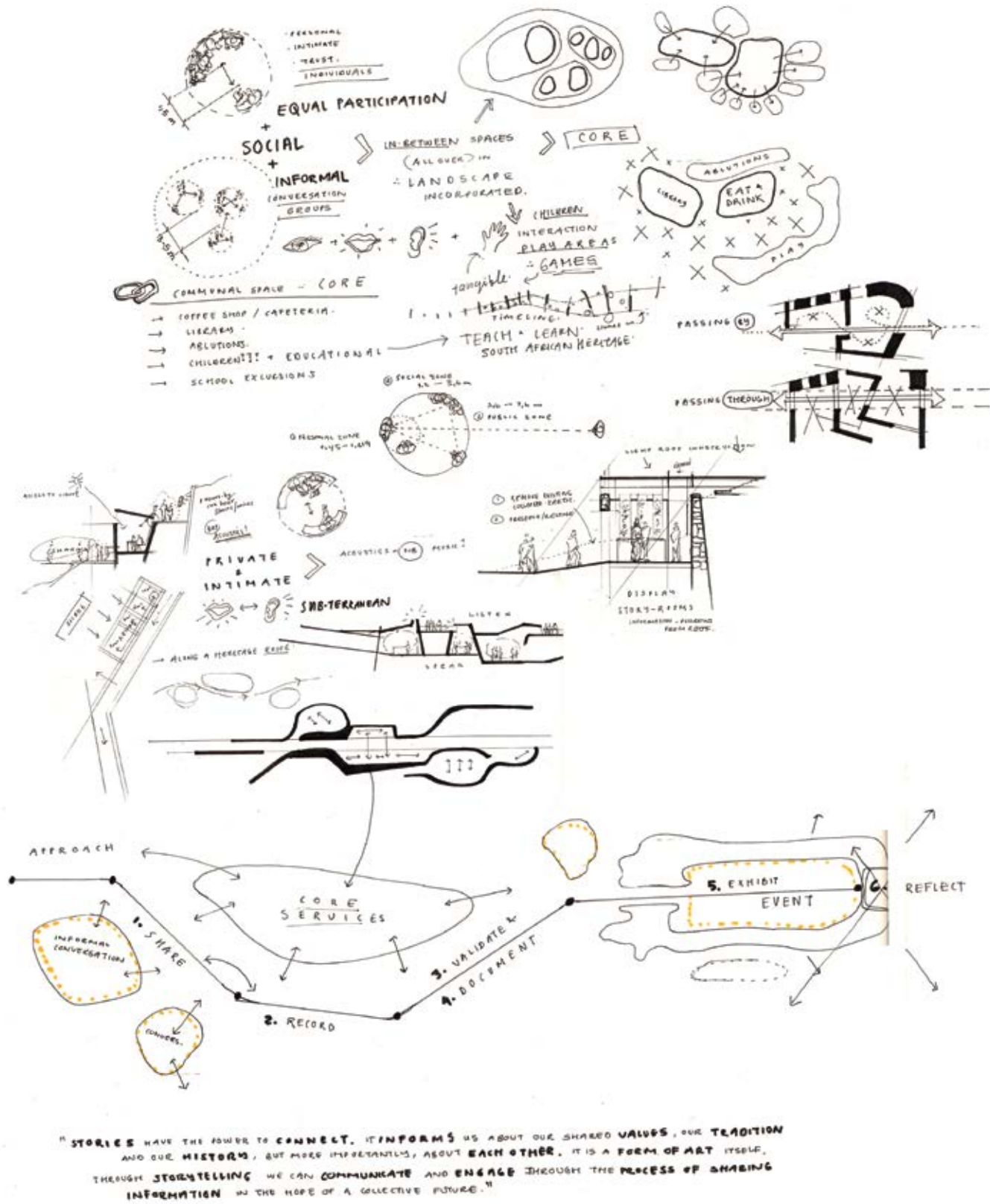
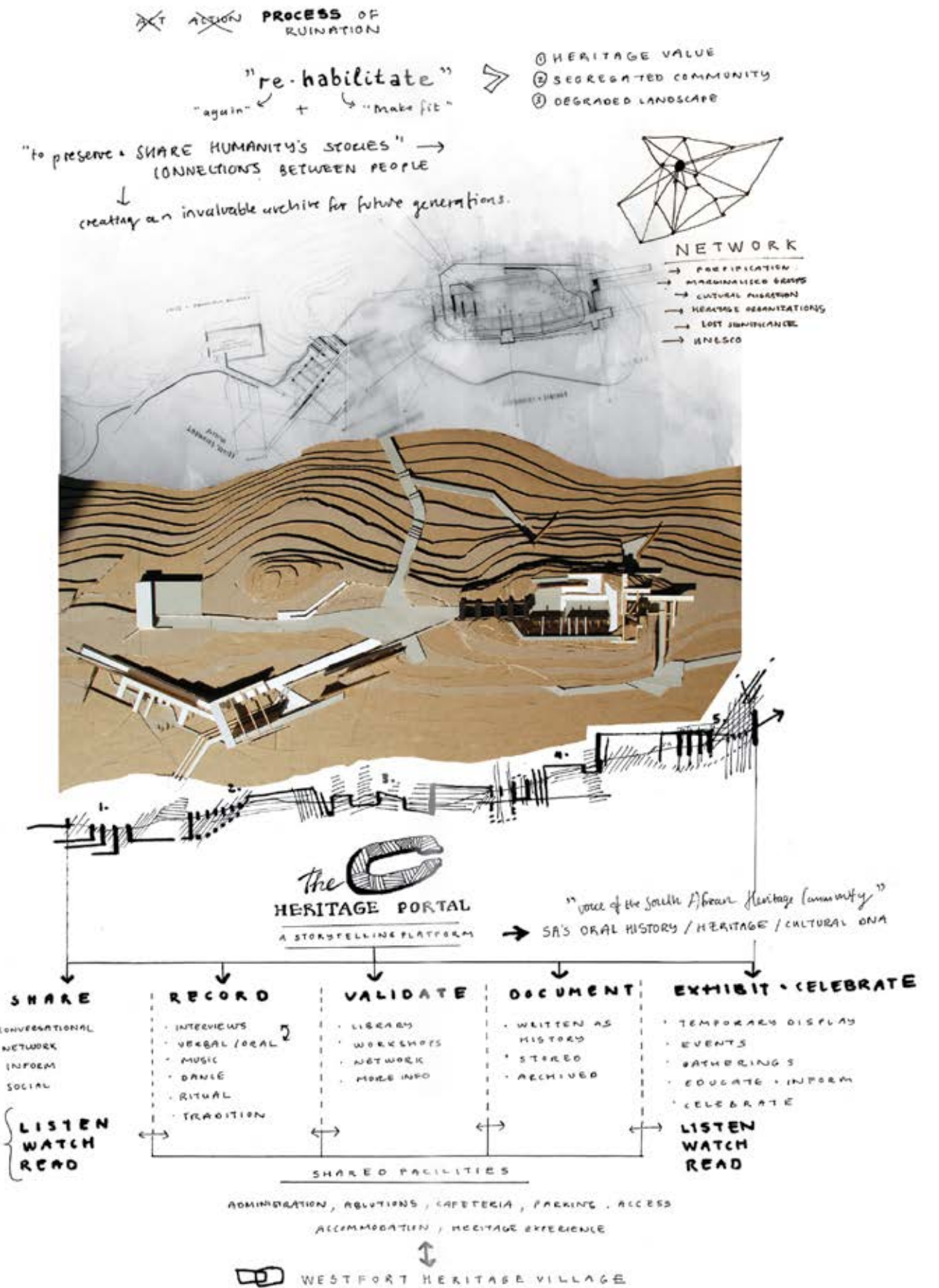


Figure 5.10: Spatial exploration of programmatic requirements (Author 2016)

Figure 5.11: First design explorations of programmatic requirements (Author 2016)



5.11

5.10



5.3//  
PROGRAMMATIC  
PRECEDENT

**FREEDOM PARK**

**Location :** Pretoria, South Africa

**Date :** 2008

**Client :** City of Tswhane

**Architect :** Gapp+ Mashabane Rose  
Architects + Mma

**Key words**

Heritage narration

Heritage Tourism

Circulation

Thresholds

As part of Pretoria's regeneration projects, the main intention of Freedom Park is to tell the **story of our South African history**. By acknowledging the past, this landmark hope to celebrate the achievement of democracy and stand as a beacon of hope for the future (Young 2004:1).

Visiting the site, one is informed of our collective history that dates from the pre-colonial till the Post-apartheid era. In 2014, Freedom Park hosted a first ever storytelling festival. This event wished to bring people together through spritual engagement and entertainment by proffessional storytellers (Daniels:2014).

Although this precedent shows similar approaches to the dissertation proposal in terms of it's programme, it is mainly included as a critique on it's limitations as an inclusive heritage site.

***Freedom Park is a national monument positioned towards furthering the rich cultural, historical, political and spiritual needs of the people of South Africa and beyond.***

(Daniels:2014)

Given it's mandate to 'further' our collective cultural, historical, political and spritual values, the author's opinion is that it is still perceived as a **political monument, static** and very **isolated**. Considering the previous theoretical exploration on heritage value, continuity and experientialism, the success of this dissertation lies in it's ability to transform an isolated heritage monument into an everyday, ongoing dialogue.

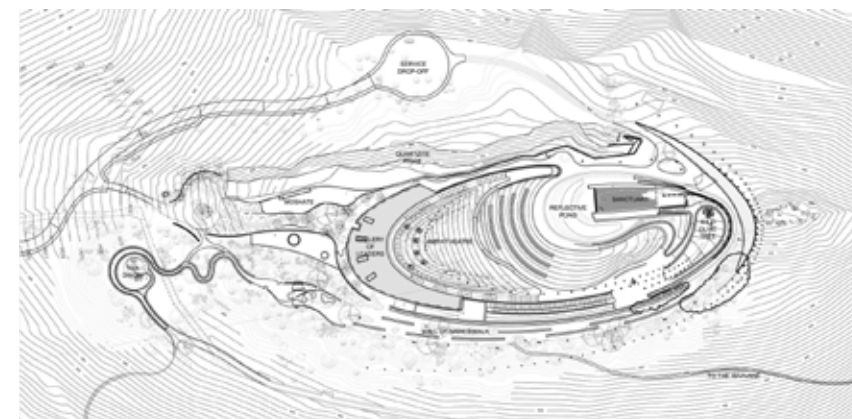
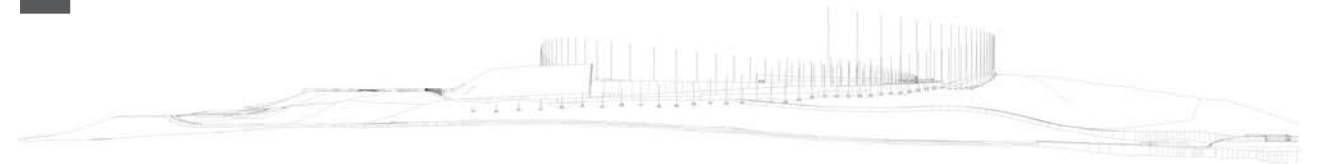
**Figure 5.12:** Elevated view of Freedom Park (Young: 2008)

**Figure 5.13:** Section and floor site plan of design (Young:2008)

**Figure 5.14:** Elevated views of the circulation routes and landscape integrated events (Young:2008)



5.12



5.13



5.14