
E

Epilogue

N^o 11

Conclusion

11 Conclusion

The exploration of architecture as an interface between the urban and natural realms was undoubtedly influenced by my love for nature and its inspiring beauty. As an urban dweller and Pretoria resident, the intention of creating a building that would serve as a new interface between its urban inhabitants and Pretoria's natural heritage, particularly the underutilised Berea Park, is considered invaluable due to the potential improvement it could make to the quality of public urban life in our city. This dissertation consequently focussed on developing a hybrid architecture that would merge building and landscape to create a new typology capable of connecting people and "nature" in the context of Pretoria.

The investigation and iterative process presented several challenges, but the outcome has delivered an approach that may offer guidance and spatial considerations for future projects to be developed along Pretoria's river corridor and underutilised open areas. Although the prospect of re-naturalising the Apies River and returning it to its original state is deemed to be unfeasible, other means of creating "natural" water elements and reciprocate relationships between the built environment and landscape can be employed.

The Hybrid illustrates the concept of creating an urban environment where

"nature" is celebrated and integrated in urban placemaking in the city of Pretoria. The project provides access, as well as new public programmes and activities along a previously sterile, disconnected and negative edge of Berea Park. By establishing a building that is an extension of the park, it ultimately creates a new topography and spatial continuation between the surrounding context, the city and the Berea Park landscape. The resulting architectural product is considered to be an apt response to the investigated contextual challenges. The design and resolution was informed by factors related to the city as well as "nature", with specific focus on the Berea Park landscape and an approach to reinstate a tangible notion of the Apies River.

The hope is that the combination and confluence of the above mentioned factors in the final development of the Hybrid has rendered a building and spaces that will assist in creating a sense of place, where the surrounding community can flourish and people can interact. The public nature of the building should enable a variety of people and the broader city community to access and experience "nature" in the city, whilst engaging in social and other recreation activities. This will culminate in the attribution of new value and meaning to the Berea Park landscape and the new ecological waterfront as a symbol of the Apies River.

N^o 12

Final exam presentation



Source: Author
Figure 12.1 ~ 23 November presentation 01.JPG



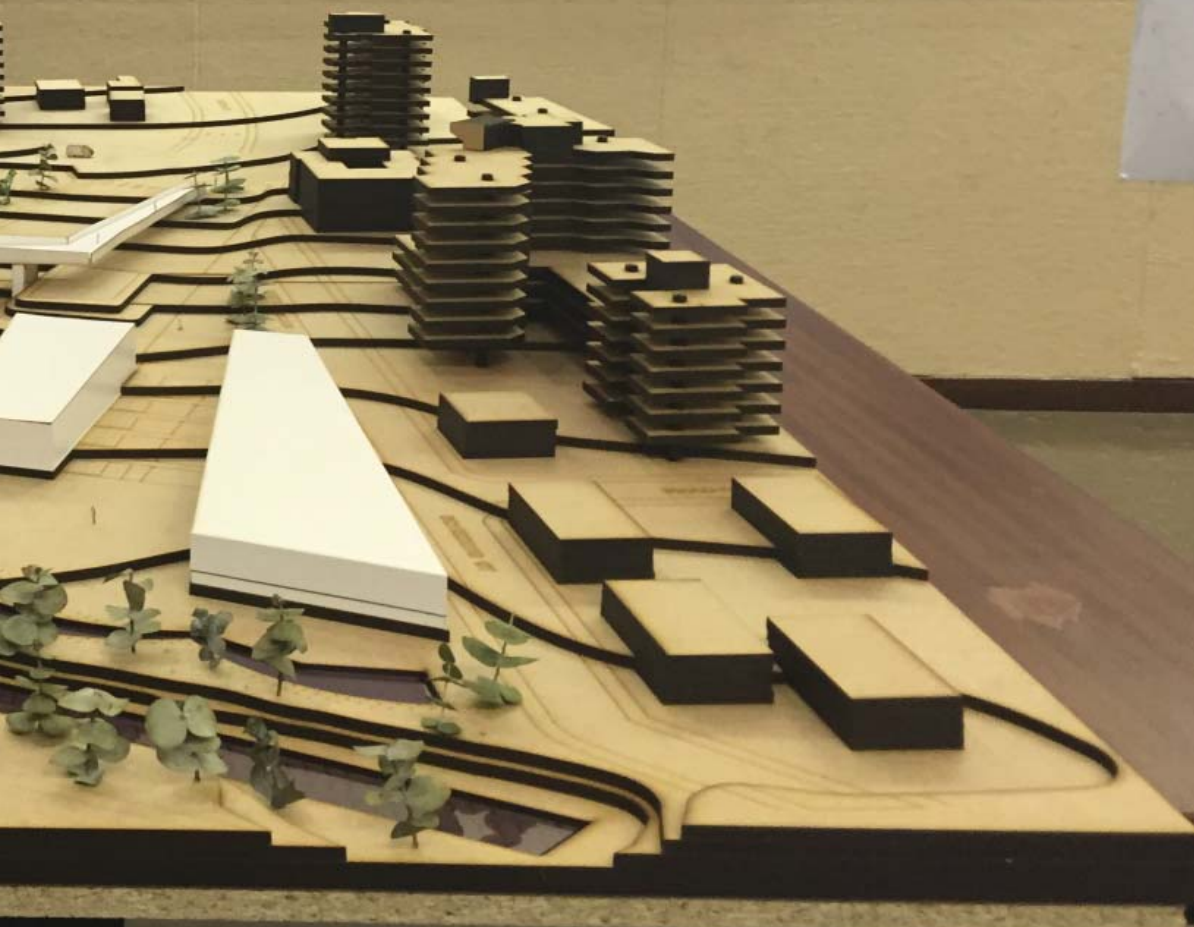
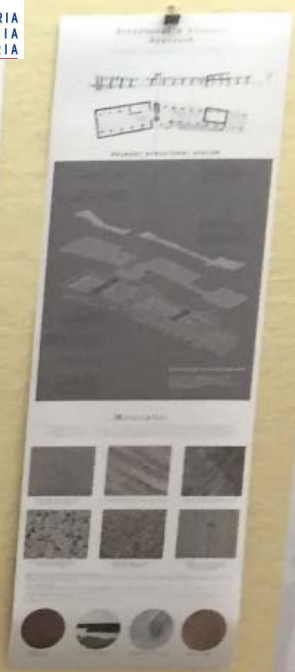


Source: Author
Figure 12.2 ~ 23 November presentation 02.JPG





Source: Author
Figure 12.3 ~ 23 November presentation 03.JPG





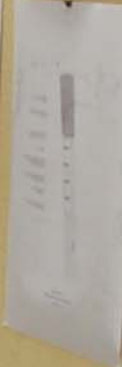
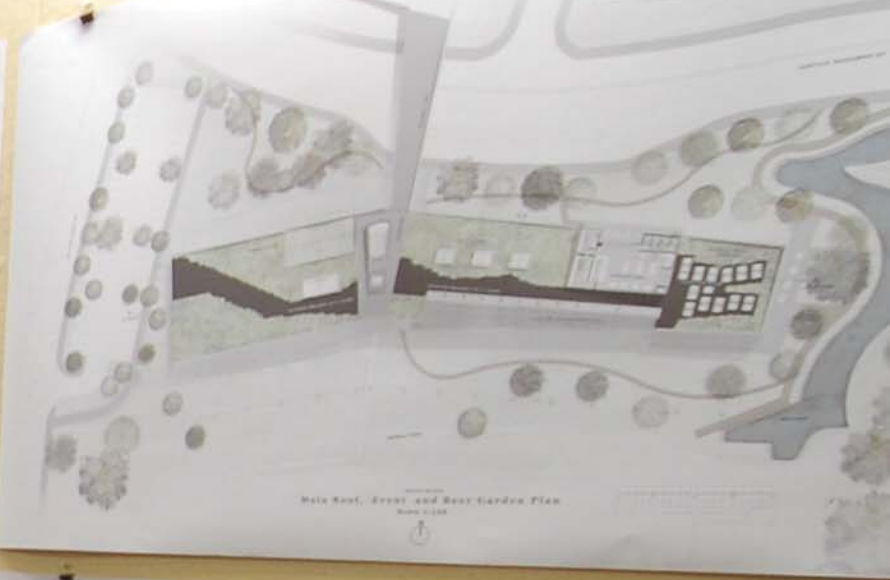
Source: Author
Figure 12.4 ~ 23 November presentation 04.JPG





Source: Author

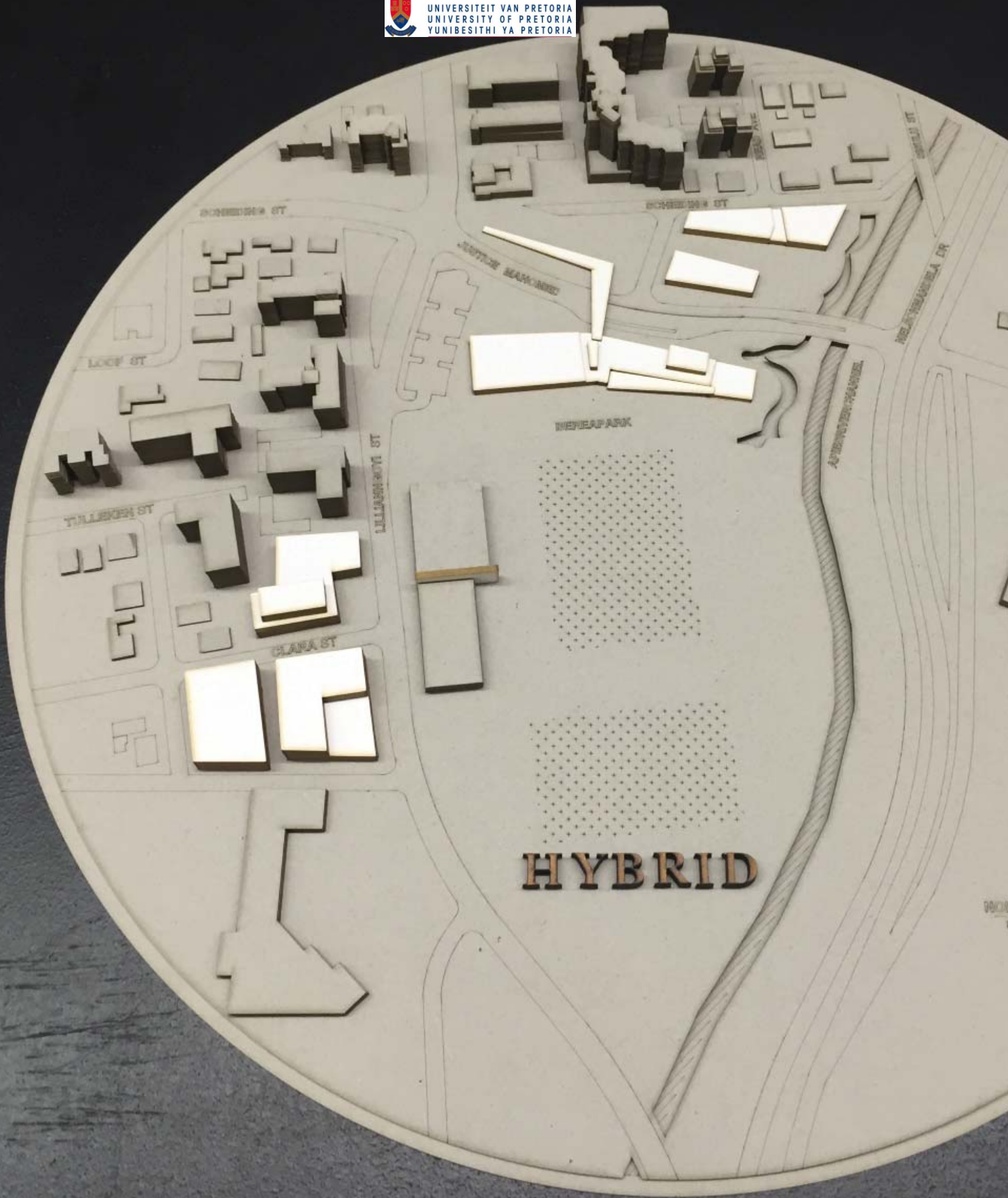
Figure 12.5 ~ 23 November presentation 05.jpg



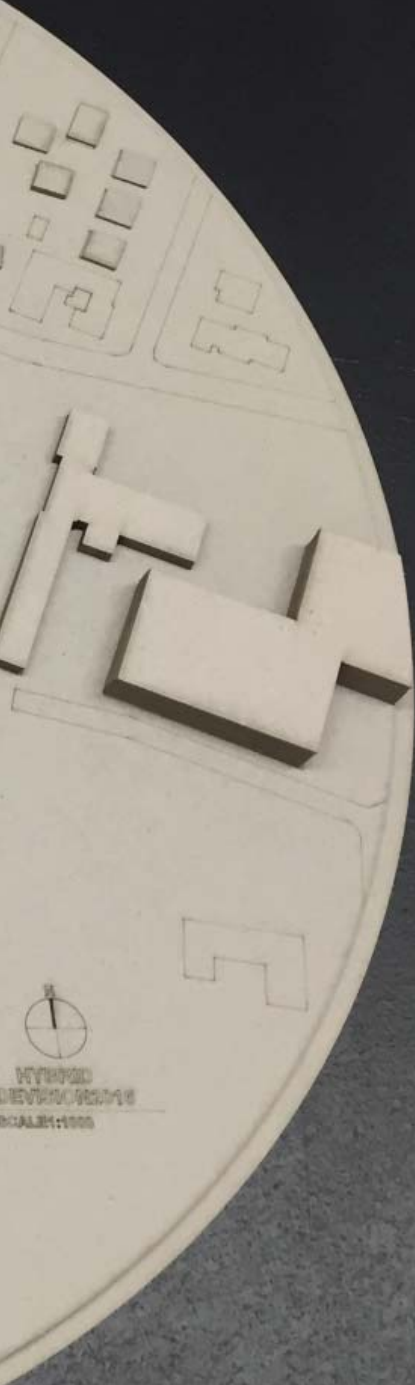


Source: Author
Figure 12.6 ~ 23 November presentation 06.jpg

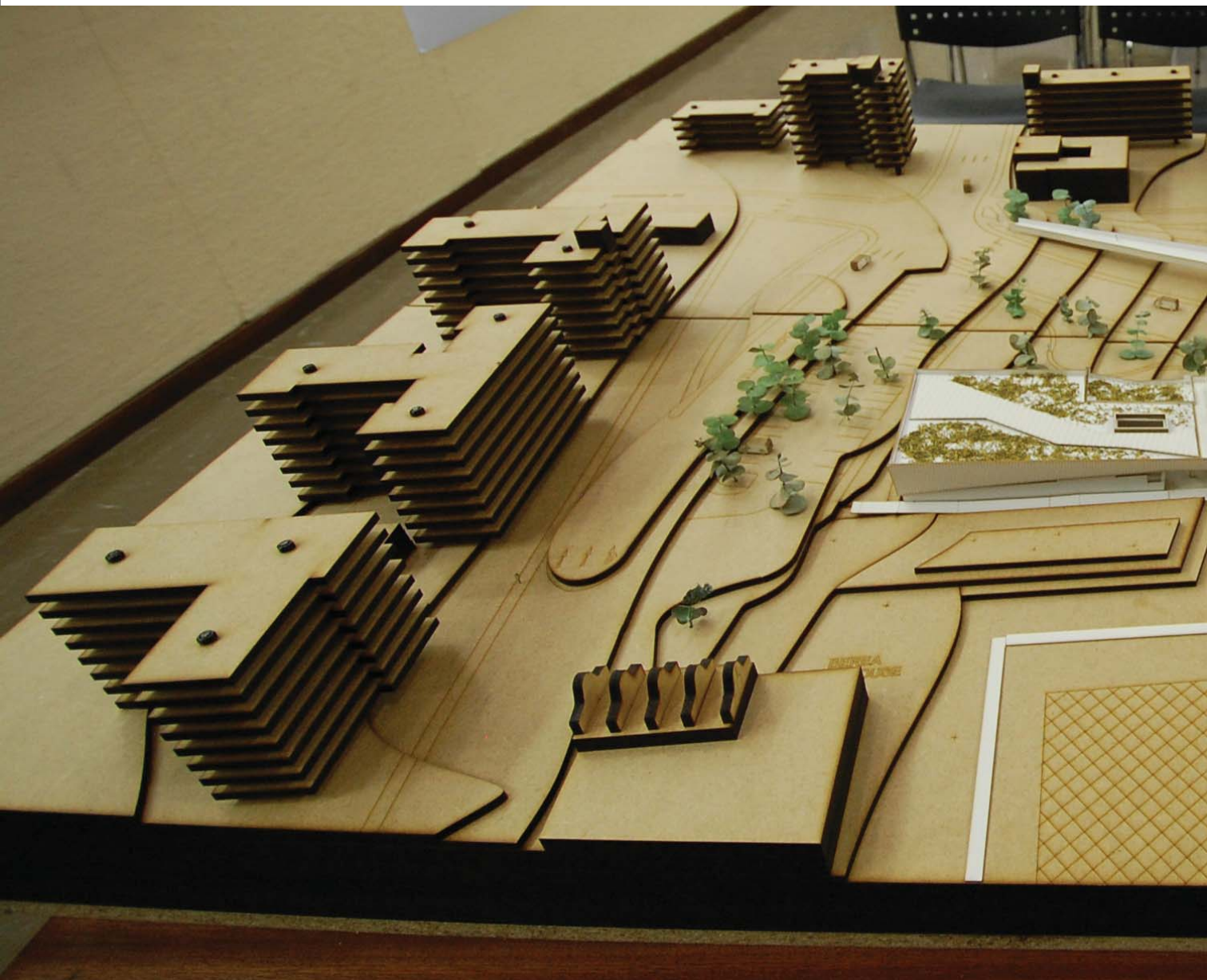




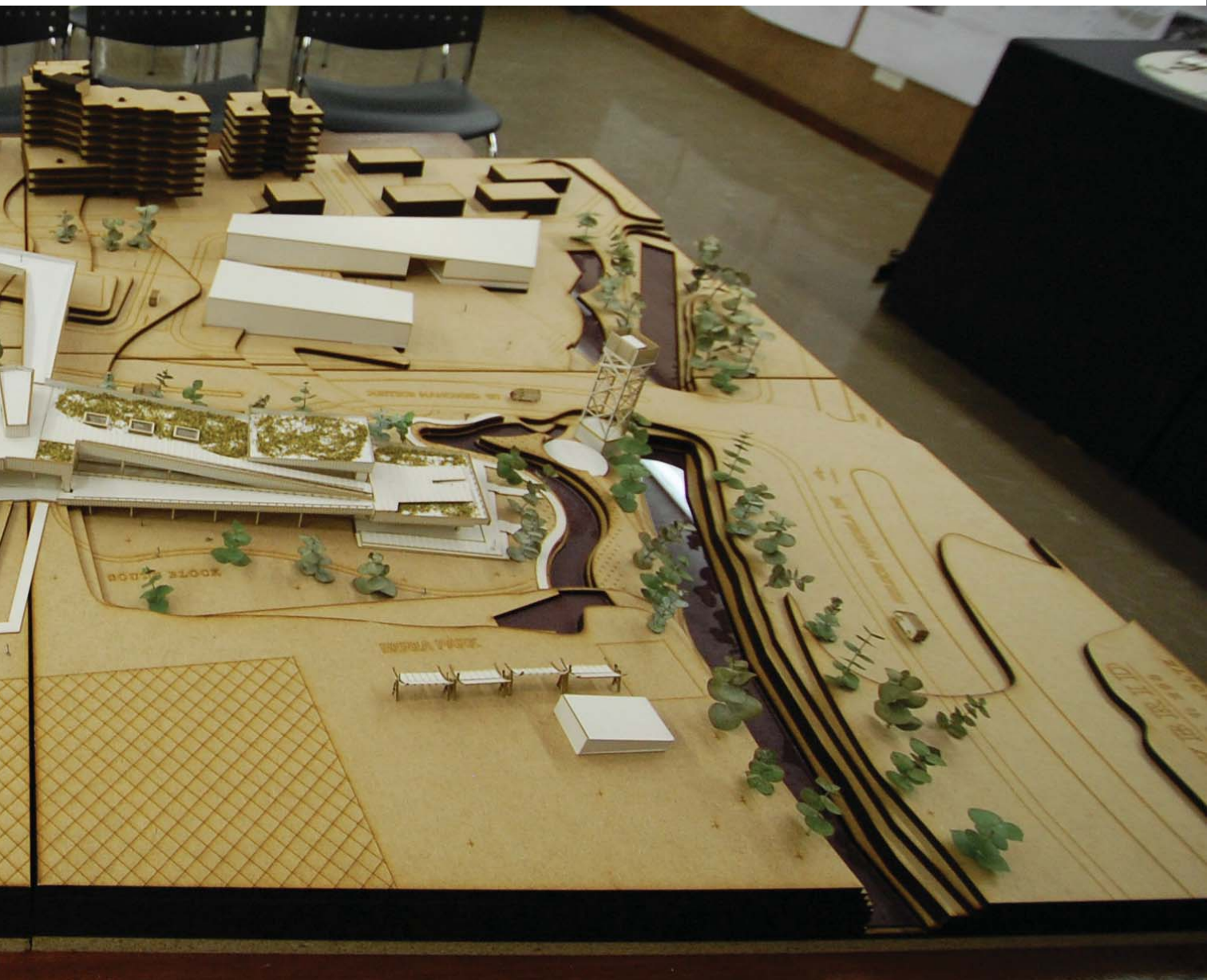
HYBRID



Source: Author
Figure 12.7 ~ Final Context Model.jpg



Source: Author
Figure 12.8 ~ Final Model 01.jpg





Source: Author
Figure 12.9 ~ Final Model 02.JPG



N^o 13

List of figures

List of Figures

Figure 1.1 ~ Pretoria southern gateway.jpg	18
Figure 1.2 ~ Central park contrast - New York City.jpg.....	18
Figure 1.3 ~ Bring back the balance.jpg	19
Figure 1.4 ~ Machu Pichu.jpg.....	20
Figure 1.5 ~ Mechanical Organisation.jpg	20
Figure 1.7 ~ Fragmented city.jpg	21
Figure 1.6 ~ Krier - Traditional city.jpg.....	21
Figure 1.8 ~ Divided city.jpg.....	22
Figure 1.9 ~ Interface.jpg	24
Figure 2.1 ~ Early Pretoria.psd	32
Figure 2.2 ~ Pierneef paintings.jpg.....	33
Figure 2.3 ~ Origins of Pretoria.psd.....	34
Figure 2.4 ~ Pretoria 1878.jpg	35
Figure 2.5 ~ Pretoria water plan.psd.....	36
Figure 2.6 ~ Development diagrams.psd	36
Figure 2.7 ~ Water history.jpg	21
Figure 2.8 ~ Apies river, Lion bridge.jpg.....	22
Figure 2.9 ~ Channelised Apies River.psd	23
Figure 3.1 ~ River corridor.jpg	26
Figure 3.2 ~ Spiritual and cultural significance of water.psd.....	27
Figure 3.3 ~ Spiritual and cultural significance of water.psd.....	27
Figure 3.4 ~ Three gorges dam - controlled infrastructure.jpg	27
Figure 3.5 ~ Culverted River - controlled infrastructure.png	27
Figure 3.6 ~ Apies and tributary streams.jpg.....	28
Figure 3.7 ~ Edge conditions.psd	30
Figure 3.8 ~ Apies river channel.jpg	31
Figure 3.9 ~ Los Angeles river.jpg	33
Figure 3.10 ~ Los Angeles Revitalisation.jpeg	33
Figure 3.11 ~ Vision focus area.jpeg.....	35
Figure 3.12 ~ Urban vision.jpeg	36
Figure 3.13 ~ LU Group vision nodes.jpg	37
Figure 4.1 ~ Reservoir park node.jpg	40
Figure 4.2 ~ Berea park and surrounds 2009.jpg.....	41
Figure 4.3 ~ Proximity and context.jpg	42
Figure 4.4 ~ Map key.jpg.....	44
Figure 4.5 ~ Area 1.jpg	45
Figure 4.6 ~ Area 2.jpg	48
Figure 4.7 ~ Area 3 a.jpg	49
Figure 4.8 ~ Area 3 b.jpg	50
Figure 4.9 ~ Area 4.jpg	51
Figure 4.10 ~ Area 5.jpg	52
Figure 4.11 ~ Grid over time.jpg	54
Figure 4.12 ~ Extension of Justice Mahomed.jpg	56
Figure 4.13 ~ Extension of Justice Mahomed b.jpg	56
Figure 4.14 ~ Context model 1947.jpg.....	57
Figure 4.15 ~ Context model 2016.jpg	57
Figure 4.16 ~ Lack of cohesion.jpg	58
Figure 4.17 ~ Fragmented barrier spaces.jpg.....	59
Figure 4.18 ~ Area for intervention.jpg	60
Figure 4.19 ~ Macro site.jpg	62
Figure 4.20 ~ Apies river edge.jpg.....	64
Figure 4.21 ~ Scheiding street.jpg	64
Figure 4.22 ~ Justice Mohamed edge.jpg	65

Figure 4.23 ~ Lillian Ngoyi.jpg	65
Figure 4.25 ~ Site gradient.jpg	66
Figure 4.24 ~ Geological site map.jpg	66
Figure 4.26 ~ River channel section.jpg	67
Figure 4.27 ~ Horizons.jpg	68
Figure 4.28 ~ Pedestrian movement.jpg.....	71
Figure 5.1 ~ Valley hands.jpg	76
Figure 5.2 ~ Ecological services.jpg.....	79
Figure 5.3 ~ Of a human nature.jpg.....	80
Figure 5.4 ~ Terranova - Leubbeus Woods.jpg	81
Figure 5.5 ~ Modes of expression.jpg	83
Figure 5.6 ~ Farnsworth house.jpg	84
Figure 5.7 ~ Falling water.jpg.....	85
Figure 5.8 ~ Thorn crown chapel.jpg	85
Figure 5.10 ~ Alhambra-garden a.jpg	87
Figure 5.9 ~ Alhambra-garden b.jpg	87
Figure 5.12 ~ ROKI Global Innovation Center a.jpg.....	88
Figure 5.11 ~ <Multiple intersecting links>.....	88
Figure 5.13 ~ ROKI Global Innovation Center c.jpg.....	88
Figure 5.14 ~ Tadao Ando - Hansol museum.jpg.....	89
Figure 5.15 ~ HOK design's London office.jpg	89
Figure 5.16 ~ Aparthotel facade Barcelona Spain.jpg	89
Figure 5.17 ~ Tadao Ando - Hansol museum b.jpg	89
Figure 5.18 ~ Sagrada familia .jpg.....	89
Figure 5.19 ~ Fort worth water garden.jpg	89
Figure 5.21 ~ High line - New York b.jpg	91
Figure 5.20 ~ High line - New York.jpg	91
Figure 5.24 ~ High line - New York c.jpg	92
Figure 5.23 ~ High line - New York e.jpg	92
Figure 5.22 ~ High line - New York d.jpg	92
Figure 5.25 ~ Giant campus a.jpg	93
Figure 5.26 ~ Giant campus b.jpg	93
Figure 5.27 ~ City of culture.jpg	94
Figure 6.1 ~ Region 3 - Density map.jpg	99
Figure 6.2 ~ Zoning.jpg	100
Figure 6.3 ~ Macro programme.jpg	102
Figure 6.4 ~ Programmatic informants.jpg	104
Figure 7.1 ~ Design precedents.jpg	109
Figure 7.2 ~ Before and after.jpg	110
Figure 7.3 ~ Site and floor plan.jpg.....	111
Figure 7.4 ~ The gallery pavillion.jpg	112
Figure 7.5 ~ Gritty waterfront site.jpg	113
Figure 7.6 ~ Plan diagramme.jpg.....	113
Figure 7.8 ~ North elevation.jpg.....	114
Figure 7.7 ~ South elevation.jpg.....	114
Figure 7.9 ~ Opera house.jpg.....	115
Figure 7.10 ~ City - water interface.jpg.....	115
Figure 7.11 ~ Public infrastructure.jpg	115
Figure 7.12 ~ Yokohama ferry port.jpg.....	116
Figure 7.13 ~ Typological landscape.jpg	117
Figure 7.14 ~ Ferry pier.jpg	117
Figure 7.15 ~ Constructed landscape.jpg.....	119
Figure 7.16 ~ Central canyon.jpg.....	119
Figure 7.17 ~ Long sections.jpg.....	119
Figure 7.18 ~ Cross sections.jpg	119
Figure 8.1 ~ Architectural reconstruction.jpg	123
Figure 8.2 ~ Hybrid typology.jpg.....	124

Figure 8.3 ~ Maquette photo.jpg	125
Figure 9.2 ~ Site diagramme a.jpg	130
Figure 9.1 ~ Site diagrammes b.jpg	130
Figure 9.3 ~ Iteration A - diagrammes.jpg	133
Figure 9.4 ~ River channel edge.jpg	134
Figure 9.5 ~ Revised approach to water egde.jpg	135
Figure 9.6 ~ Iteration A - maquette.jpg	136
Figure 9.7 ~ Perspective sketch.jpg	136
Figure 9.8 ~ Macro site plan.jpg	137
Figure 9.9 ~ Iteration A - lower ground level floor plan.jpg	138
Figure 9.10 ~ Iteration A - long section.jpg	138
Figure 9.11 ~ Iteration A - ground level floor plan.jpg	139
Figure 9.12 ~ June model photo collage a.jpg	140
Figure 9.13 ~ June model photo collage b.jpg	141
Figure 9.14 ~ Iteration B - diagramme.jpg	142
Figure 9.15 ~ Token sketch a.jpg	143
Figure 9.17 ~ Token sketch c.jpg	143
Figure 9.19 ~ Token sketch e.jpg	143
Figure 9.16 ~ Token sketch b.jpg	143
Figure 9.18 ~ Token sketch d.jpg	143
Figure 9.20 ~ Token sketch f.jpg	143
Figure 9.21 ~ Iteration B - Floor plans.jpg	144
Figure 9.22 ~ Iteration B - cross section.jpg	145
Figure 9.23 ~ Iteration B - south elevation.jpg	145
Figure 9.24 ~ Iteration C - cross sections.jpg	146
Figure 9.25 ~ Iteration C - sketch building outline.jpg	147
Figure 9.26 ~ Iteration C - long Section AA.jpg	148
Figure 9.27 ~ Iteration C - cross section BB.jpg	148
Figure 9.28 ~ Iteration C - floor plans.jpg	150
Figure 9.29 ~ Iteration D - conceptual design sketch.jpg	151
Figure 9.30 ~ Iteration D - diagramme.jpg	152
Figure 9.31 ~ Iteration D - combined floor plans in context.jpg	154
Figure 9.32 ~ Iteration D - sketches.jpg	156
Figure 9.33 ~ Iteration D - sketches.jpg	157
Figure 9.34 ~ Iteration D - north elevation.jpg	158
Figure 9.35 ~ Iteration D - south elevation.jpg	158
Figure 10.1 ~ The elevated landscape.jpg	163
Figure 10.2 ~ Concrete expression.jpg	164
Figure 10.6 ~ Stereotomic mass.jpg	164
Figure 10.4 ~ Plaza & tower.jpg	164
Figure 10.3 ~ Semi buried spaces.jpg	164
Figure 10.5 ~ Between landscape and town.jpg	164
Figure 10.8 ~ DBSA Welcome Centre b.jpg	167
Figure 10.9 ~ DBSA coffer slab.jpg	167
Figure 10.7 ~ DBSA Welcome Centre a.jpg	167
Figure 10.10 ~ DBSA roof edge detail.jpg	167
Figure 10.11 ~ Structure concept plan.jpg	168
Figure 10.12 ~ Column alignment.jpg	168
Figure 10.13 ~ Hybrid Structure & Skin.jpg	169
Figure 10.14 ~ Kunsthal slanted columns auditorium.jpg	171
Figure 10.15 ~ Kunsthal slanted columns.jpg	171
Figure 10.16 ~ Kunsthal section.jpg	171
Figure 10.17 ~ Materiality.jpg	172
Figure 10.18 ~ Concrete finishes.jpg	174
Figure 10.19 ~ Secondary material palette.jpg	176
Figure 10.20 ~ Sun study.jpg	178
Figure 10.21 ~ Water strategy.jpg	180

Figure 10.22 ~ Wetland species selection.jpg	181
Figure 10.23 ~ Water process diagram.jpg	182
Figure 10.24 ~ Water Management plan.jpg	184
Figure 10.25 ~ Abstraction.pdf	186
Figure 10.26 ~ Water yield.pdf	187
Figure 10.27 ~ Water demand.pdf	188
Figure 10.28 ~ Water demand.pdf:2	189
Figure 10.29 ~ Municipal water demand.pdf.....	190
Figure 10.30 ~ Water balance.pdf.....	191
Figure 10.31 ~ Heating, cooling and ventilation strategy.jpg	193
Figure 10.32 ~ SBAT- assessment.jpg	194
Figure 10.33 ~ Site plan.pdf	195
Figure 10.34 ~ Combined Ground Floor Plans.pdf	196
Figure 10.35 ~ Roof plan.pdf	198
Figure 10.36 ~ Elevations.pdf	200
Figure 10.37 ~ Section A_west.pdf.....	202
Figure 10.38 ~ Section A_east.pdf	204
Figure 10.39 ~ Section B.pdf	206
Figure 10.40 ~ detail 01.pdf	208
Figure 10.41 ~ detail 02.pdf.....	209
Figure 10.42 ~ detail 03.pdf.....	210
Figure 10.43 ~ Visualisation Eastern Edge.jpg.....	212
Figure 10.44 ~ Visualisation Rooftop Garden.jpg	214
Figure 10.45 ~ Visualisation Southern link.jpg	216
Figure 10.46 ~ Visualisation Street Edge.jpg.....	218
Figure 12.1 ~ 23 November presentation 01.JPG.....	228
Figure 12.2 ~ 23 November presentation 02.JPG.....	230
Figure 12.3 ~ 23 November presentation 03.JPG.....	232
Figure 12.4 ~ 23 November presentation 04.JPG.....	234
Figure 12.5 ~ 23 November presentation 05.jpg	236
Figure 12.6 ~ 23 November presentation 06.jpg	238
Figure 12.7 ~ Final Context Model.jpg.....	241
Figure 12.8 ~ Final Model 01.jpg	242
Figure 12.9 ~ Final Model 02.JPG	244

N^o 14

Abbreviations

ASLA	:	American Society of Landscape Architects
BRT	:	Bus Rapid Transit
CBD	:	Central Business District
CSIR	:	Council of Scientific and Industrial Research
DBSA	:	Development Bank of Southern Africa
DPA	:	Dominique Perrault Architecture
DWS	:	Department: Water and Sanitation
FOA	:	Foreign Office Architects
HVAC	:	Heating Ventilation and Air Conditioning
LARR	:	Los Angeles River Revitalisation (Master Plan)
LU	:	(2016) Liquid Urbanism (Group Vision)
LVL	:	Laminated Veneer Lumber
MPa	:	Mega Pascal
NHRA	:	National Heritage Resources Act
RIDP	:	Regional Integrated Development Plan
RRC	:	River Restoration Centre
[sa]	:	Sine anno (without year)
SBAT	:	Sustainable Building Assessment Tool
SHGC	:	Solar Heat Gain Coefficient
UDISA	:	Urban Design Institute of Southern Africa
UV	:	Ultraviolet
WULA	:	Water Use License Application

N^o 15

References

ACTIONAID SOUTH AFRICA. 2016. Running on empty, What Business, Government and Citizens must do to confront South Africa's water crisis. Report contributors Pegasys Institute, Dr Anthony Turton, Dr Anja du Plessis, Jo Walker, Stefanie Swanepoel. April 2016

Available from: http://uscdn.creamermedia.co.za/assets/articles/attachments/59814_running_on_empty_water_efficiency_report.pdf
[Accessed: 2016-04-07]

ALLAN, S. 2004. Points + lines: Diagrams and projects for the City. New York: Princeton Architectural Press.

ALLAN, S. 2011. From the Biological to the geological. In S. Allan & M. Mcquade eds. 2011. Landform building: architectures new terrain. 2011. New York: Lars Müller Publishers. Princeton Architectural Press

ASLA. American Society of Landscape Architects. 2009 Professional Awards.

Available from: <https://www.asla.org/2009awards/064.html>
[Accessed: 2016-03-18]

BEATLY, T. 2011. Blue urbanism, the city and the ocean. Places, April 2011.

Available from: <https://placesjournal.org/article/blue-urbanism-the-city-and-the-ocean/>
[Accessed: 2016-04-18]

BORDEN, G.P. & MEREDITH, M. 2012. Matter: Material processes in architectural production. London and New York: Routledge.

BORELL, B. 2015. The urban water Crises. Nature.org, online magazine. August 2015

Available from: <http://www.nature.org/magazine/archives/the-urban-water-crisis.xml>
[Accessed: 2016-04-21]

BROWNELL, B. 2012. Material strategies: Innovative applications in architecture. New York: Princeton Architectural Press.

BROWNELL, B. & SWACKHAMER, M. 2015. Hypernatural: Architecture's New Relationship with Nature. New York: Princeton Architectural Press.

BROWNING, W.D., RYAN, C.O., CLANCY, J.O. 2014. 14 Patterns of Biophilic Design. New York: Terrapin Bright Green LLC.

Available from: <http://www.terrapinbrightgreen.com/wp-content/uploads/2014/04/14-Patterns-of-Biophilic-Design-Terrapin-2014e.pdf>
[Accessed: 2016-07-10]

BUCHANAN, P. 2012. The big rethink farewell to modernism. Architectural Review, 231, 1380, pp. 82-93

CITY OF TSHWANE, REGION 3: REGIONAL INTEGRATED DEVELOPMNET PLAN 2014/2015.

http://www.tshwane.gov.za/sites/Council/Ofiice-Of-The-Executive-Mayor/201415%20REVIEWED%20IDP/Annexure%20D%20Region%203%20RIDPv9_090514.pdf
[Accessed: 2016-05-10]

CRAVEN, J. 2016. What is Infrastructure? Why is it important? April 11, 2016. Aboutarchitecture.com

Available from: <http://architecture.about.com/od/engineeringconstruction/g/infrastructure.htm>
[Accessed: 2016-04-31]

CROWE, N.1995. Nature and the idea of a man made world, an investigation into the evolutionary roots of form and order in the built environment. Cambridge, Massachusetts: MIT Press

CSIR Building Construction and Technology (2002). Guidelines for Human Settlement Planning and Design. Pretoria: Council for Scientific and Industrial Research.

Available from: http://www.csir.co.za/Built_environment/RedBook/
[Accessed: 2016-03-02]

DIPPENAAR, M.A. 2013. Hydrological heritage overview: Pretoria's Fountains – Arteries of Life. Pretoria: Water Research Commission SP44/13.

DOMINIQUE PERRAULT ARCHITECTURE. Office Projects, EWHA Woman's University

Available from: http://www.perraultarchitecture.com/en/projects/2459-ewha_womans_university.html

[Accessed: 2016-03-18]

DUNNET, N. & KINGSBURY, N. 2008. Planting Green Roofs and Living Walls. Revised and updated Edition. Portland and London: Timber Press

eWISA: Water Institute of Southern Africa. South Africa's water History: 20th Century.

Available from: <http://www.ewisa.co.za/misc/WaterHistory/default20c.htm>
[Accessed: 2016-02-22]

FEDERAL HIGHWAY ADMINISTRATION. Highway Traffic Noise. The Audible Landscape, 4 physical techniques to reduce Noise impacts. US department of Transportation online resources.

Available from: https://www.fhwa.dot.gov/environment/noise/noise_compatible_planning/federal_approach/audible_landscape/al04.cfm

[Accessed: 2016-09-18]

FERREN, A. 2009, On the Waterfront. Opera News. May, 2009. Music Periodicals database ,the Metropolitan Opera Guild, Inc., New York, N. Y.

FRESHWATERWATCH. An Earthwatch research project developed by the Earthwatch Institute.

Available from:<https://freshwaterwatch.thewaterhub.org/content/ecosystem-services>
[Accessed: 2016-03-22]

GAUSA, M. 2003. The Metapolis dictionary of advanced architecture: City, Technology and Society in the Information Age. New York: Actar.

GOOD, K. 2015. The Surprising Effect Being Disconnected From Nature Has on Our Health and Well-Being. One Green Planet. 18 February 2015.

Available from: <http://www.onegreenplanet.org/environment/natural-world-impact-on-human-health-and-well-being/>

[Accessed: 2016-03-22]

HAWKEN, P. 1997. Natural Capitalism: from Mother Jones. In S.M. Wheeler & T. Beatley eds. The Sustainable Urban Development Reader. 2004. London: Routledge

HUBER, N. 2008. Olympic Sculpture Park - Seattle, WA. Places. Vol. 20(3):6-11
Available from: <https://placesjournal.org/assets/legacy/pdfs/olympic-sculpture-park.pdf>
[Accessed: 2016-4-10]

HEDRIX, J. 2010. Architecture as the Psyche of a Culture. Roger Williams University. School of Architecture, Art, and Historic Preservation Faculty Publications. Paper 8.
Available from: http://docs.rwu.edu/cgi/viewcontent.cgi?article=1007&context=saahp_fp
[Accessed: 2016-07-13]

HOLMJORDAAN. Dbsa Welcome Centre. Official webpage HolmJordaan architects and Urban Designers.
Available from: http://www.holmjordaan.co.za/main/projects_spec.php?id=9
[Accessed: 2016-08-10]

KAROLIA, S. 2016. Imagining the state of our cities: The city of Tshwane into the future. Presentation delivered at the Re-imagine urbanism conference 2016. 13-15 June 2016 , Freedom park, Pretoria.

KELLERT, S. 2005. Building for life: Designing and understanding the human-Nature Connection. Washington DC: Island press

KOGEL, J.E., TRIVEDI, N.C., BARKER, J.M. & KRUKOWSKI, S.T. (eds) 2006. Industrial Minerals & Rocks, Commodities, Markets and Uses. 7th Addition. Colorado: Society for Mining, Metallurgy and Exploration, Inc. (SME)

KUNSTHAL ROTTERDAM, 1995. Kunsthal Rotterdam/a+t editions, Magazine a+t, Issue 2. Graficas Santimaria.

LAFARGEHOLCIM FOUNDATION FOR SUSTAINABLE CONSTRUCTION, 5th International LafargeHolcim Forum, Detroit 2016. Infrastructure space. Foundations 19, Magazine of the LafargeHolcim Foundation for Sustainable Construction.
Available from: <https://src.lafargeholcim-foundation.org/dnl/9a0f80dd-5541-4212-8d03-7447e6175960/Foundations19-lowres.pdf>
[Accessed: 2016-08-30]

LITTMAN, J.A. 2009. Regenerative Architecture: A Pathway Beyond Sustainability. University of Massachusetts.
Available from: <http://scholarworks.umass.edu/cgi/viewcontent.cgi?article=1389&context=theses>
[Accessed: 2016-03-22]

LOMHOLT, I. 2016. Plaza of Spain in Adeje – Sacred Museum: Plaza Espana in Adeje. E-architect. 11 March 2016
Available from: <http://www.e-architect.co.uk/spain/sacred-museum-plaza-adeje>
[Accessed: 2016-09-09]

LOOTS, L., VAN DIJK, M., VAN VUUREN, S.J., BHAGAN, J. & KURTZ, A. 2014. Conduit-hydropower potential in the City of Tshwane water distribution system: A discussion of potential applications,

financial and other benefits. Journal of the South African Institution of Civil Engineering. Vol 56 No 3, October 2014, Pages 2–13, Paper 979.

MATTHEWS, P.J.(ed). 2011. Contemporary Capital, an architectural journal. Pretoria: Visualbooks

McGINN, D. 2014. The High Line effect: Why cities around the world (including Toronto) are building parks in the sky. The globe and mail. 1 October 2014.

Available from: <http://www.theglobeandmail.com/life/home-and-garden/architecture/the-high-line-effect-why-cities-around-the-world-including-toronto-are-building-parks-in-the-sky/article20877673/>

[Accessed: 2016-05-09]

MENIS, F. Sacred Museum and Plaza. Official Fernando Minis/Menis Arquitectos webpage.

Available from: <http://menis.es/sacred-museum-and-plaza-spain-in-adeje/>

[Accessed: 2016-09-09]

MINNER, K. 2011. Olympic Sculpture Park/ Weis Manfredi. Archdaily. 6 January 2011

Available from: <http://www.archdaily.com/101836/olympic-sculpture-park-weissmanfredi>

[Accessed: 2016-04-10]

MUMFORD, L. 1938. Cities and the crisis of civilization, from the Introduction to the Culture of cities. In S.M. Wheeler & T. Beatley eds. The Sustainable Urban Development Reader. 2004. London: Routledge

OBERHOLZER, B.J. 2011. Guidelines For Site Selection Notebook. Stanford, Western Cape: B. Oberholzer

OXFORD ONLINE DICTIONARY, 2016

Available from: <https://en.oxforddictionaries.com/definition/reciprocity>

[Accessed: 2016-04-31]

ODENDAAL, N. South Africa on the cusp of broader water crisis – report. Engineering News.

Creamer media. 5 April 2016

Available from: <http://www.engineeringnews.co.za/article/south-africa-on-the-cusp-of-broader-water-crisis-report-2016-04-05>

[Accessed: 2016-04-07]

PERES, E.M. 2014. Architecture for Life: exploring regenerative and resilience thinking. University of Pretoria.

POLLOCK, N. 2002. Foreign Architects blurs the line between landscape and building in its undulant, dune like YOKOHAMA PORT TERMINAL. Architectural Record. November 2002, Vol. 190 Issue 11, p142-149.

PURNELL, D.G. 1994. The engineering Geology of central Pretoria. Bulletin of Geological survey of South Africa. Council of Geoscience.

RAINBOWSKYLIGHT. Official Rainbowskylight webpage.

Available from: <http://www.rainbowskylight.co.za/>

[Accessed: 2016-09-20]

RAINEY, R.M. 1988. Architecture and Landscape: Three Modes of Relationship [the inhabited Landscape: An exhibition]. Places. Vol. 4(4):4-6
Available from: <http://escholarship.org/uc/item/47k9b2mm>
[Accessed: 2016-04-31]

REED, C. & LISTER N. 2014. Ecology and Design: Parallel Genealogies. Places, April 2014.
Available from: <https://placesjournal.org/article/ecology-and-design-parallel-genealogies/?gclid=CKiAjZHD680CFdYy0wodN9MI5w>
[Accessed: 2016-07-11]

RHINOWOOD. Official Rhinowood webpage.
Available from: <http://www.rhinowood.co.za/homes>
[Accessed: 2016-10-10]

RRC, the River Restoration Centre.2014. Cranfield University, Cranfield, United Kingdom.
Available from: <http://www.therrc.co.uk/practitioners/biodiversity-design-ltd>
[Accessed: 2016-03-04]

SAMIEI, K. 2013. Architecture and Urban Ecosystems: From Segregation to Integration. The nature of cities.
Available from: <http://www.thenatureofcities.com/2013/05/26/architecture-an-urban-ecosystems-from-segregation-to-integration/>
[Accessed: 2016-02-04]

SALMON, F. 2016. Concrete jungle, why brutalism architecture is back in style. The Guardian. 28 September 2016.
Available from: <https://www.theguardian.com/artanddesign/2016/sep/28/grey-pride-brutalist-architecture-back-in-style>
[Accessed: 2016-09-28]

SCHMIDT,S. & VOLLMER,B. 2013. (eds). Architective, Building Construction Standards for South Africa.: Mondeor: Architective Publications

SMITH, A. & VON KROGH STRAND, I. (eds). 2011. Oslo's new Opera House: Cultural flagship, regeneration tool or destination icon? European urban and regional Studies. Vol.18, no. 1 (2011): 93-110. Sage publications.

SNOHETTA. Norwegian National Opera and Ballet. Official Snohetta webpage.
Available from: <http://snohetta.com/projects/42-norwegian-national-opera-and-ballet>
[Accessed: 2016-04-18]

SYED, A. 2012. Advanced Building technologies, for Sustainability. New Jersey: John Wiley & Sons.

THE LOS ANGELES RIVER REVITALISATION MASTER PLAN. Available from: http://boe.lacity.org/lariverrmp/Background/master_plan.htm
[Accessed: 2016-04-22]

TOURBIER, J.T, GERSDORF, I., SCHWAGER, T., SCHANZE, J. & OLFERT, A. 2014. Existing Urban River Rehabilitation Schemes. Urban River Basin Enhancement Methods funded by European Commission, 5th Framework Programme, Key Action 4 "City of tomorrow and cultural heritage". June 2014. Leibniz Institute of Ecological and Regional Development, Dresden (IOER) and Dresden University of Technology (TU Dresden).

UNIVERSITY OF PRETORIA, ABLE WIKI, 2012.

Available from: http://able.wiki.up.ac.za/index.php/Berea_Park_Sports_Grounds,_C/o_Scheiding_and_Lilian_Ngoyi_Streets_and_Nelson_Mandela_Drive,_Pretoria_City_Centre,_Tshwane
[Accessed: 2016-03-18]

UNIVERSITY OF BERKELEY, Environmental design library guides.

Available from: http://guides.lib.berkeley.edu/building_types/typology
[Accessed: 2016-03-26]

VAN BILJON, L. 1993. Pretoria: Genesis and successive layers of its evolution. Planning History. Bulletin of the International Planning History Society. Vol.15 No.2 1993. Middlesex University

VAN DER MERWE, D. 2011. Architectural Concrete, a guide to achieving high-quality finishes. Midrand: Cement and Concrete institute

WATERWISE. Water situation in South Africa.

Available from: <http://www.waterwise.co.za/site/water/environment/situation.html>
[Accessed: 2016-04-21]

WEIS, M. & MANFREDI, M. A. 2015. Public natures: Evolutionary Infrastructures. New York: Princeton Architectural Press.

WHEELER, S.M. 2004. Planning for Sustainability: Creating liveable, equitable and ecological communities. New York: Routledge.

WOODS, L. 2012. A tree is a tree is a ... Building?

Available from: <https://lebbeuswoods.wordpress.com/2012/01/27/a-tree-is-a-tree-is-a-building/>
[Accessed: 2016-03-24]

WOLF, K.L. & HOUSELEY, E. 2014. Reflect & restore. Urban green space for mental wellness. Annapolis, MD: The TKF Foundation.

Available from: http://naturesacred.org/wp-content/uploads/2014/04/TKF_WellnessBriefing-v14_SinglePages.pdf
[Accessed: 2016-03-24]