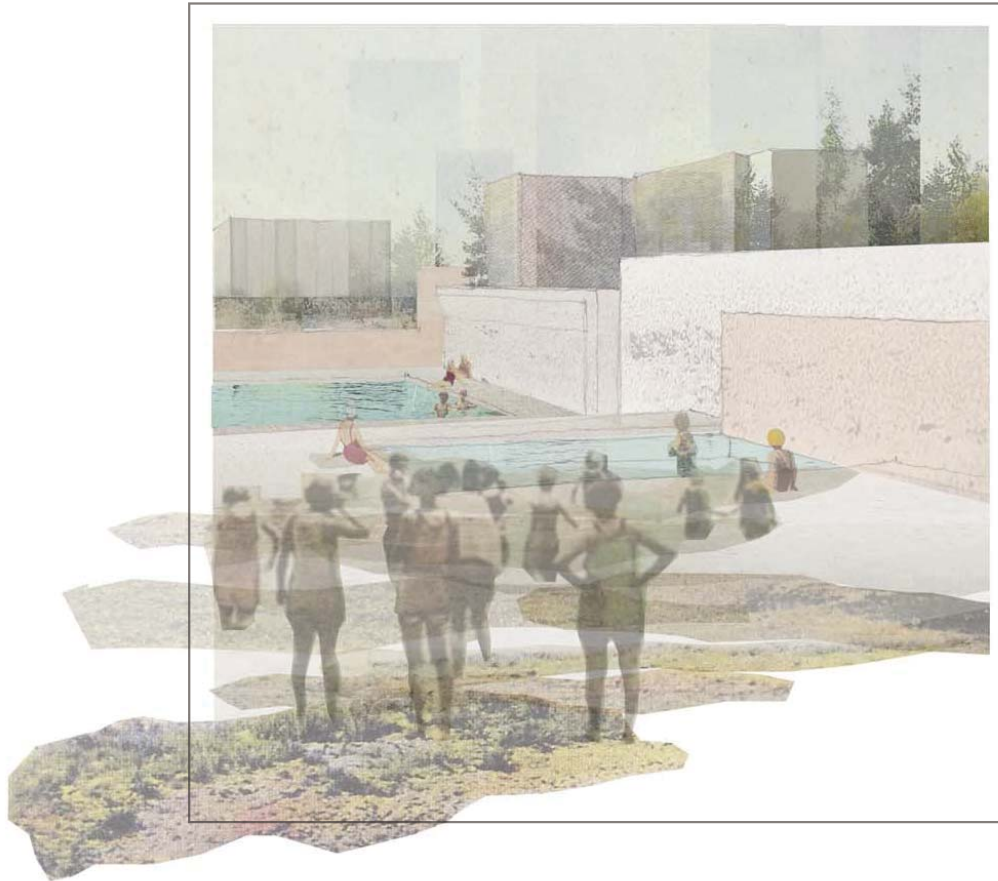


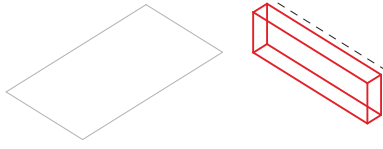
## 4. DESIGN INTERVENTION

---

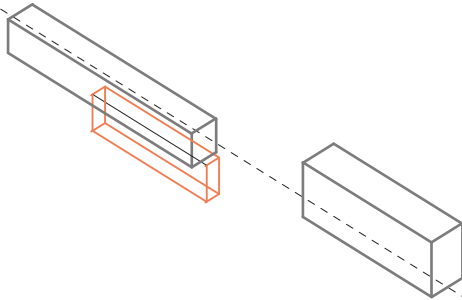


The scheme proposes the use water for leisure as a means to establish a relationship between the city's users and the natural environment. In the pursuit of responsive urban place making control is taken over the effect of fragmentation on urban development in the park and the fantastical nature and use of water is considered in public urban spaces where it has largely been absent.

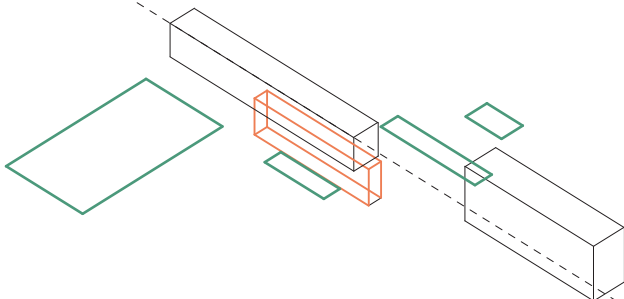
The existing pool is a critical catalyst in the use and form of the new design and a critical component in the design's conception of space. Its programme of recreation and swimming is the primary programme of the scheme. This implies that water is the first material and next catalyst in the conception of space. The collection of water takes prominence and becomes the organisational median for the design in the form of a reservoir. The nature of the spaces of enclosure that contain the original programme of swimming and also contain water were the drivers for the new courts that facilitate the new programmes that are dependant on the reservoir.



THE COLLECTION OF WATER TAKES PROMINENCE AND BECOMES THE ORGANISATIONAL MEDIAN FOR THE DESIGN IN THE FORM OF A RESERVOIR

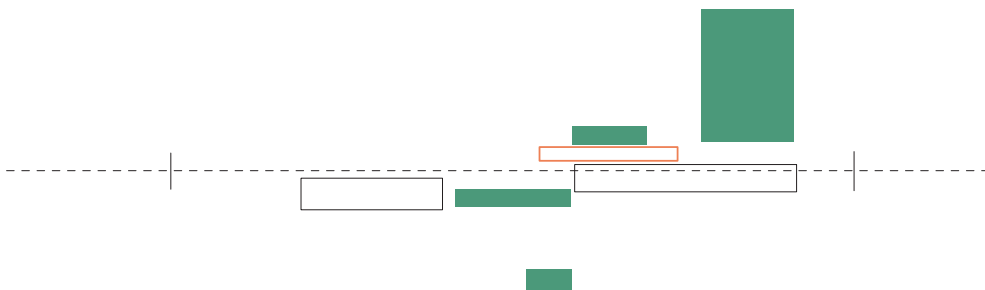
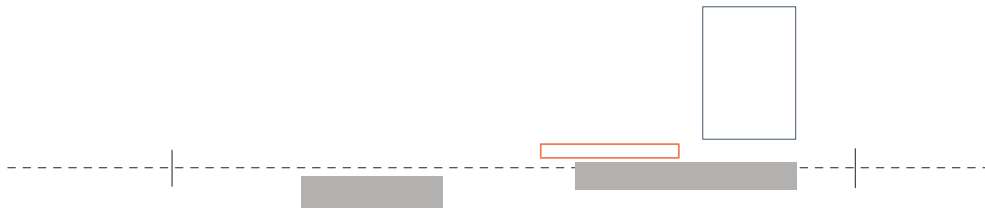
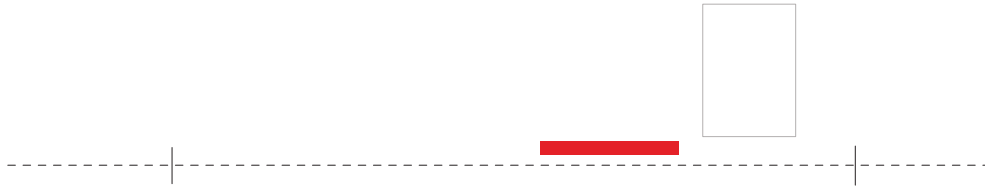


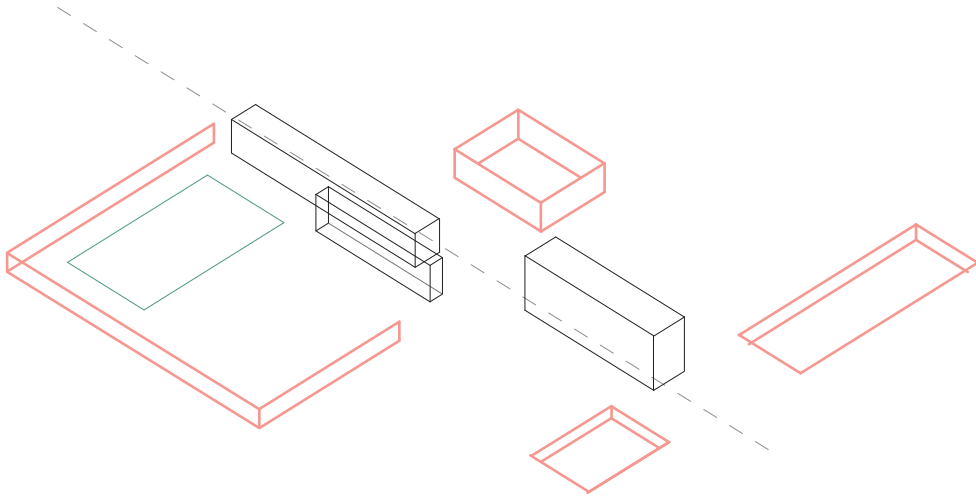
WATER DISTRIBUTED FOR CLEANSING (HAND WASH, FOOT WASH, BODY WASH, WATER CLOSETS) RESULTS IN A SERVICE CORE THAT IS AN EXTENSION OF THE RESERVOIR



WATER DISTRIBUTED FOR SWIMMING (EXISTING POOL, WADING POOL, HYDROTHERAPY POOL, LAP POOL)

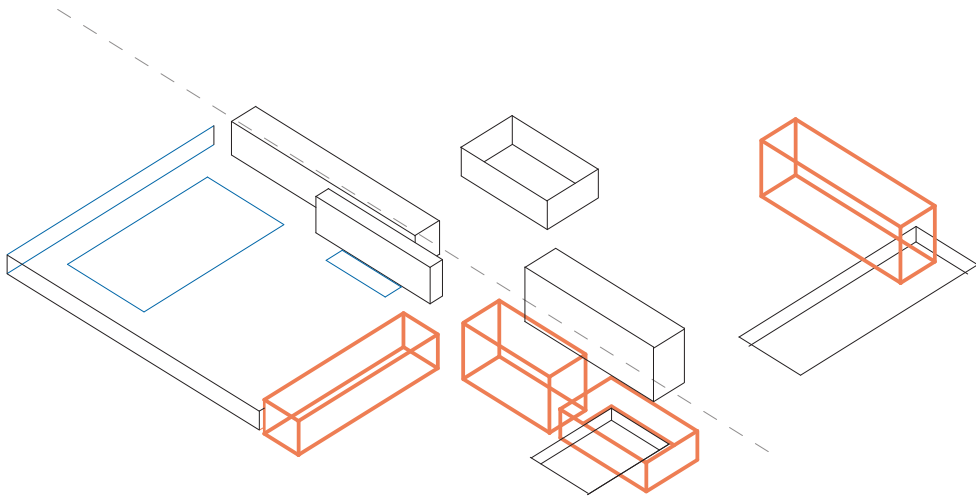
SPATIAL COMPOSITION





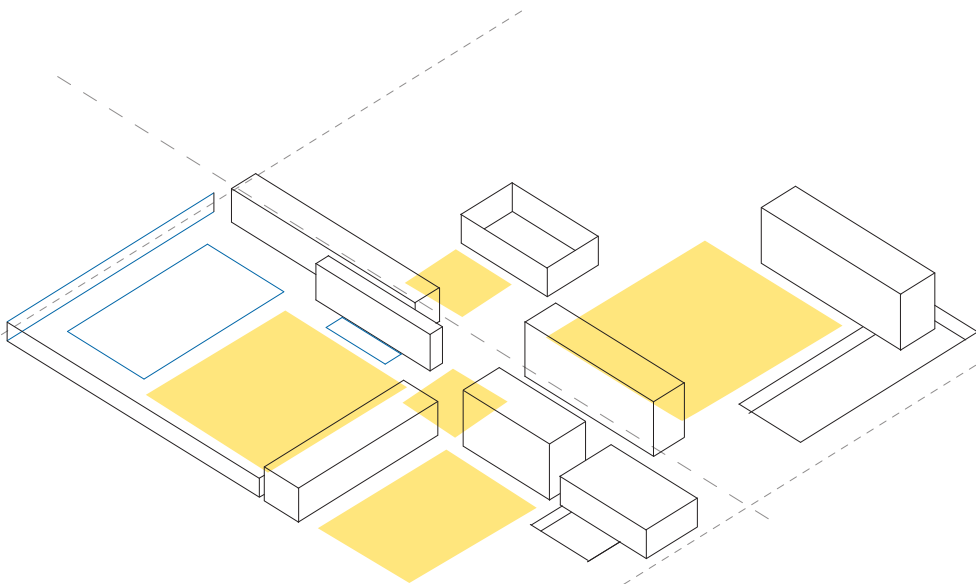
BY MANIPULATING GROUND PLANE, ENCLOSURE CREATED WITH BOUNDARIES THAT DISTANCES BUT DOES NOT EXCLUDE ACTIVITY IN THE SPACES FROM EVERYDAY LIFE. AID IN SPACES OF RETREAT.

PERFORMANCE ARENA  
 DAY CARE PLAY COURT  
 EXISTING POOL COURT  
 HYDROTHERAPY COURT

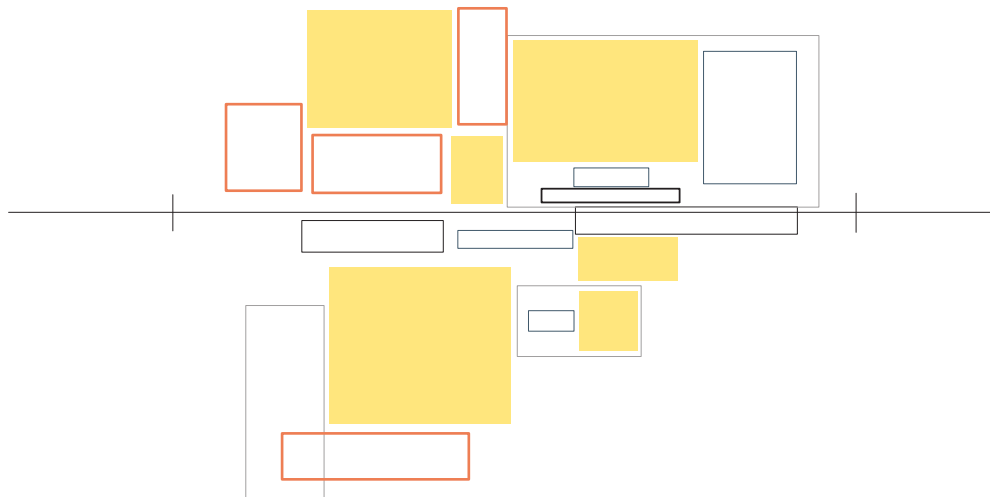
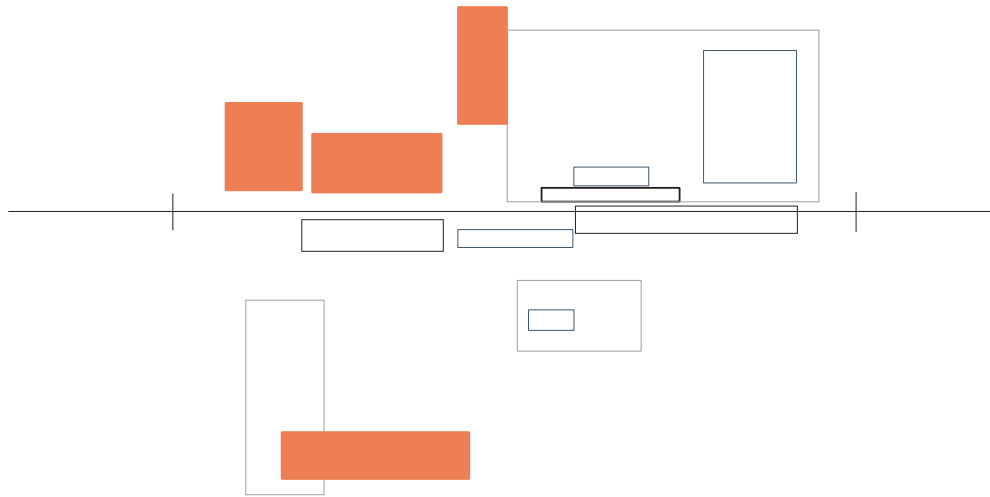
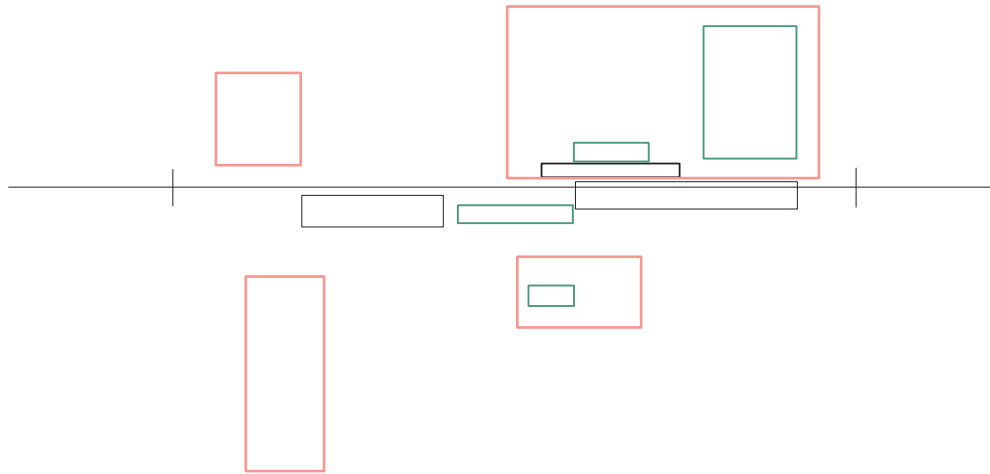


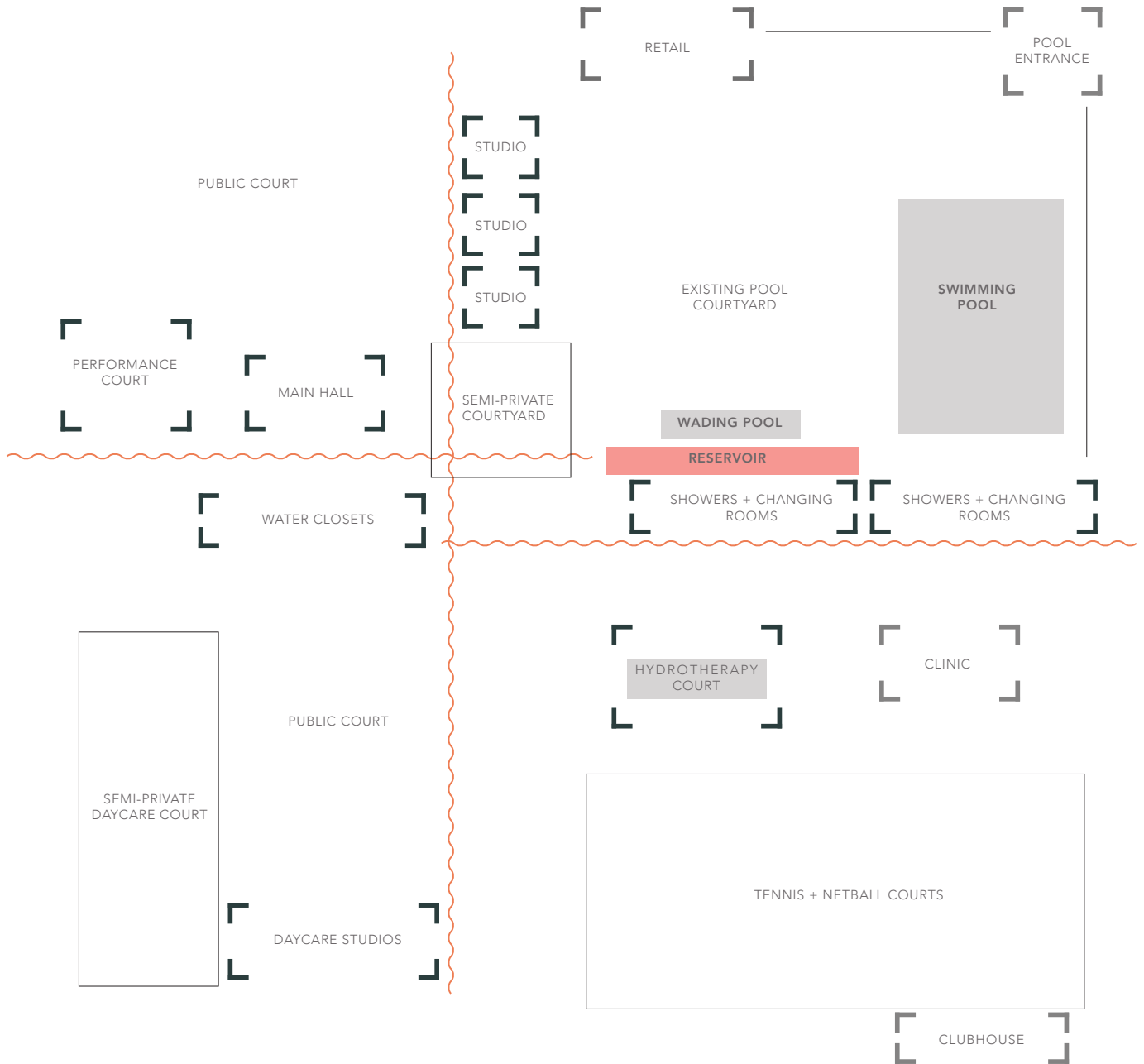
ANCILLARY PROGRAMMES:

MAIN HALL AND GYMNASIUM  
 PERFORMANCE ARENA  
 STUDIOS  
 DAY CARE

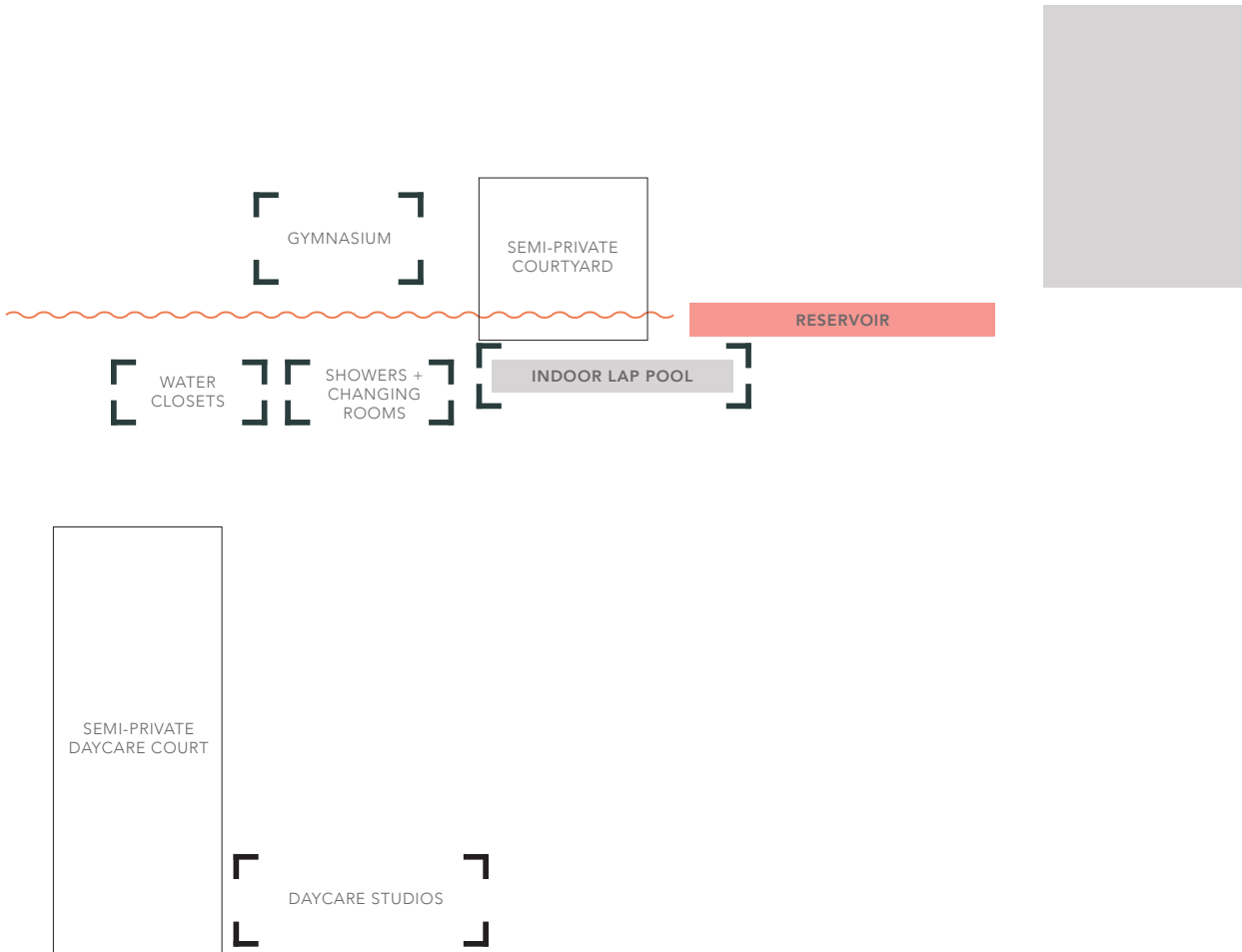


INTERSTITIAL COURTS



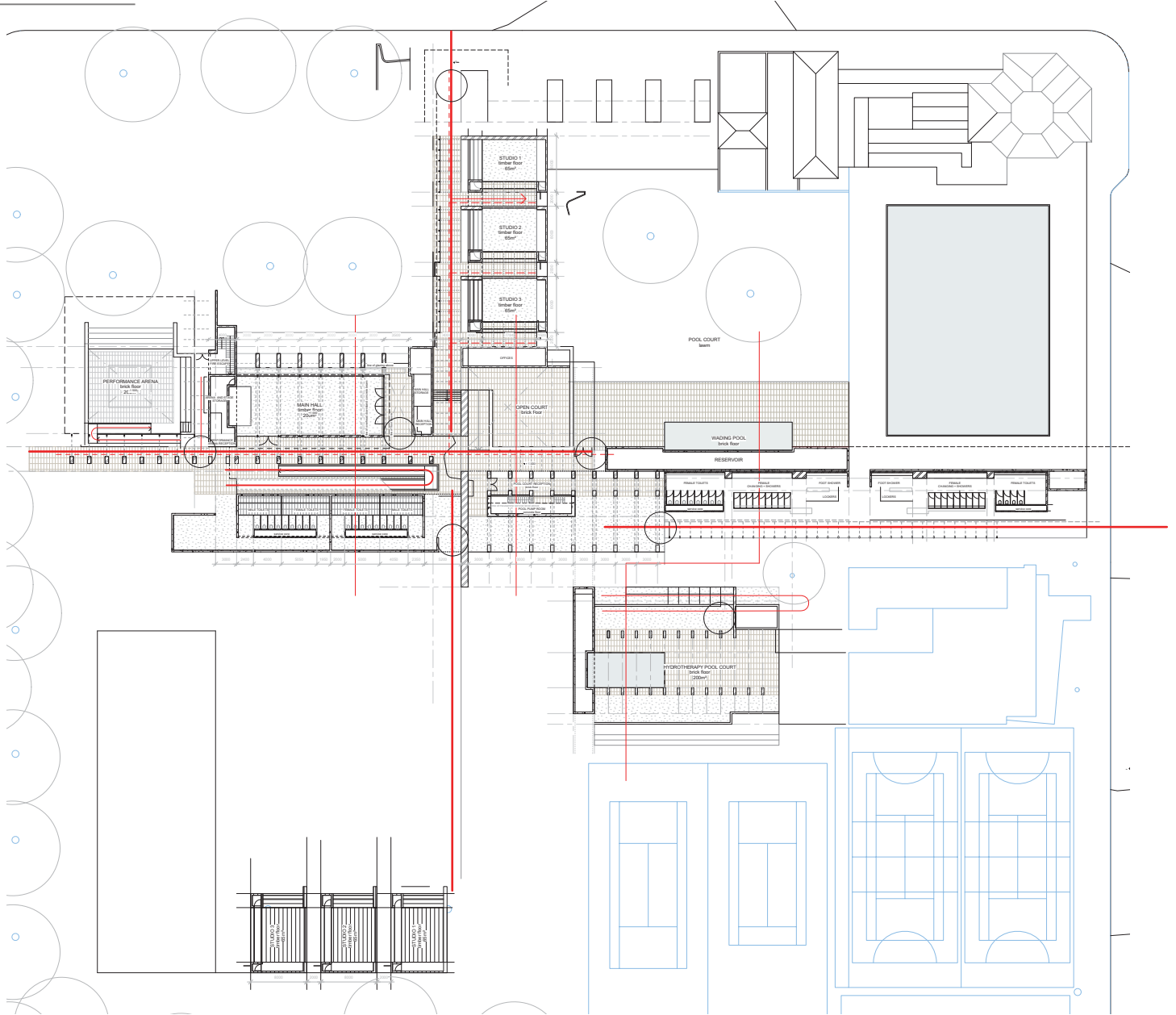


PROGRAMME + CIRCULATION  
GROUND LEVEL



PROGRAMME + CIRCULATION  
LEVEL 1



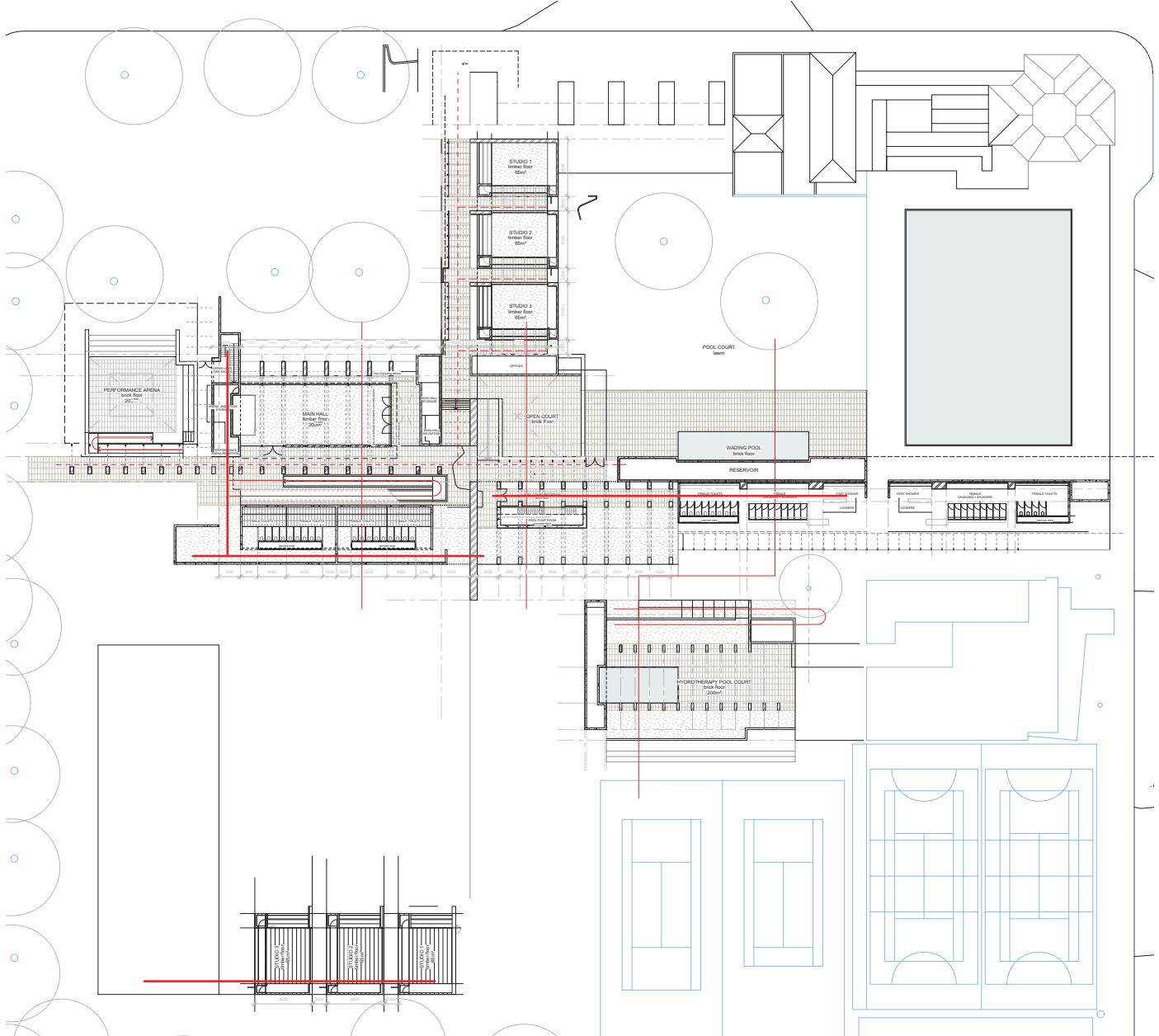


ACCESS

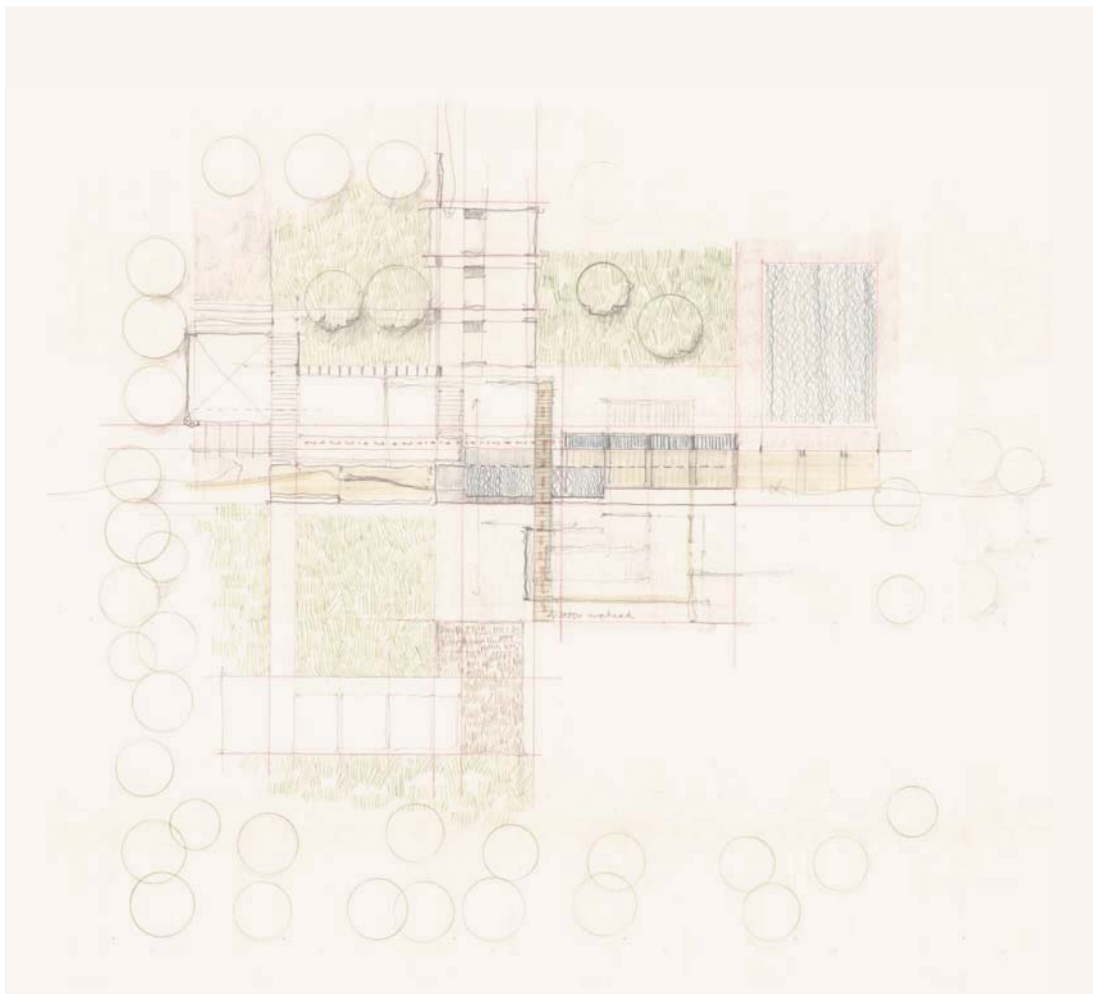
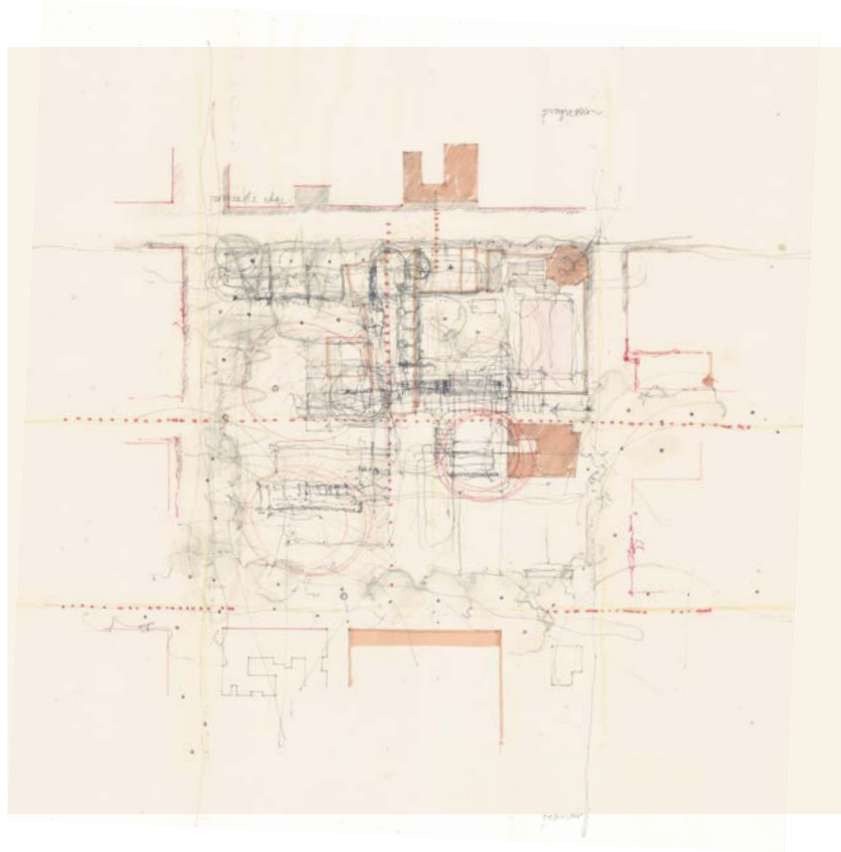
CIRCULATION

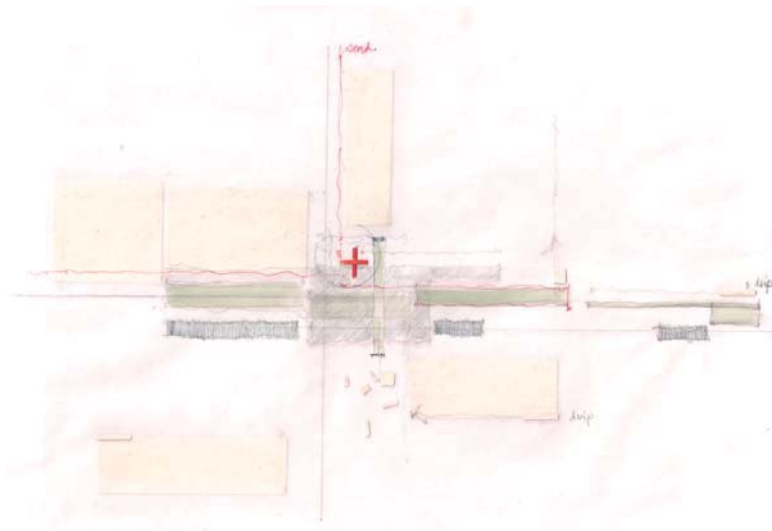
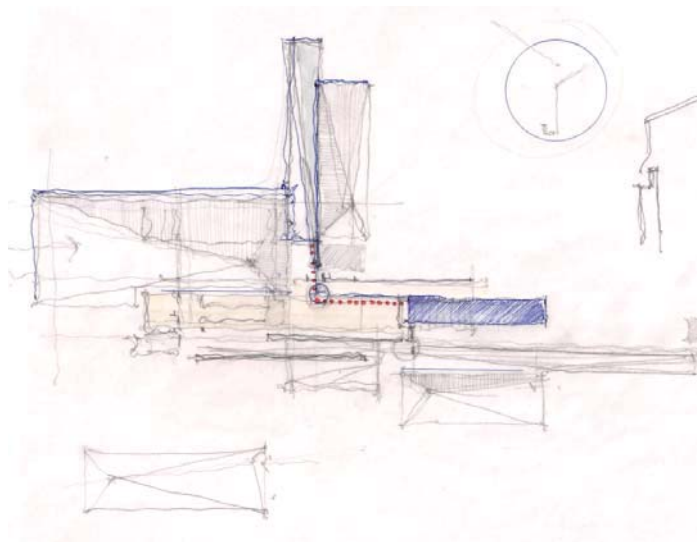
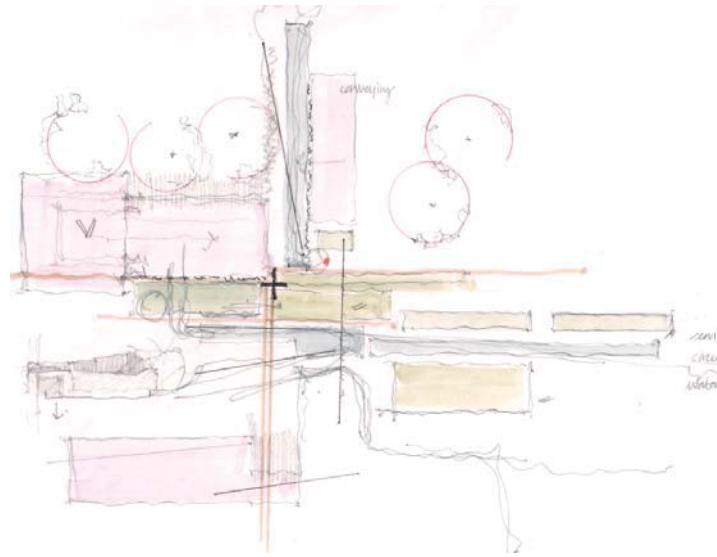
SIGHT LINES

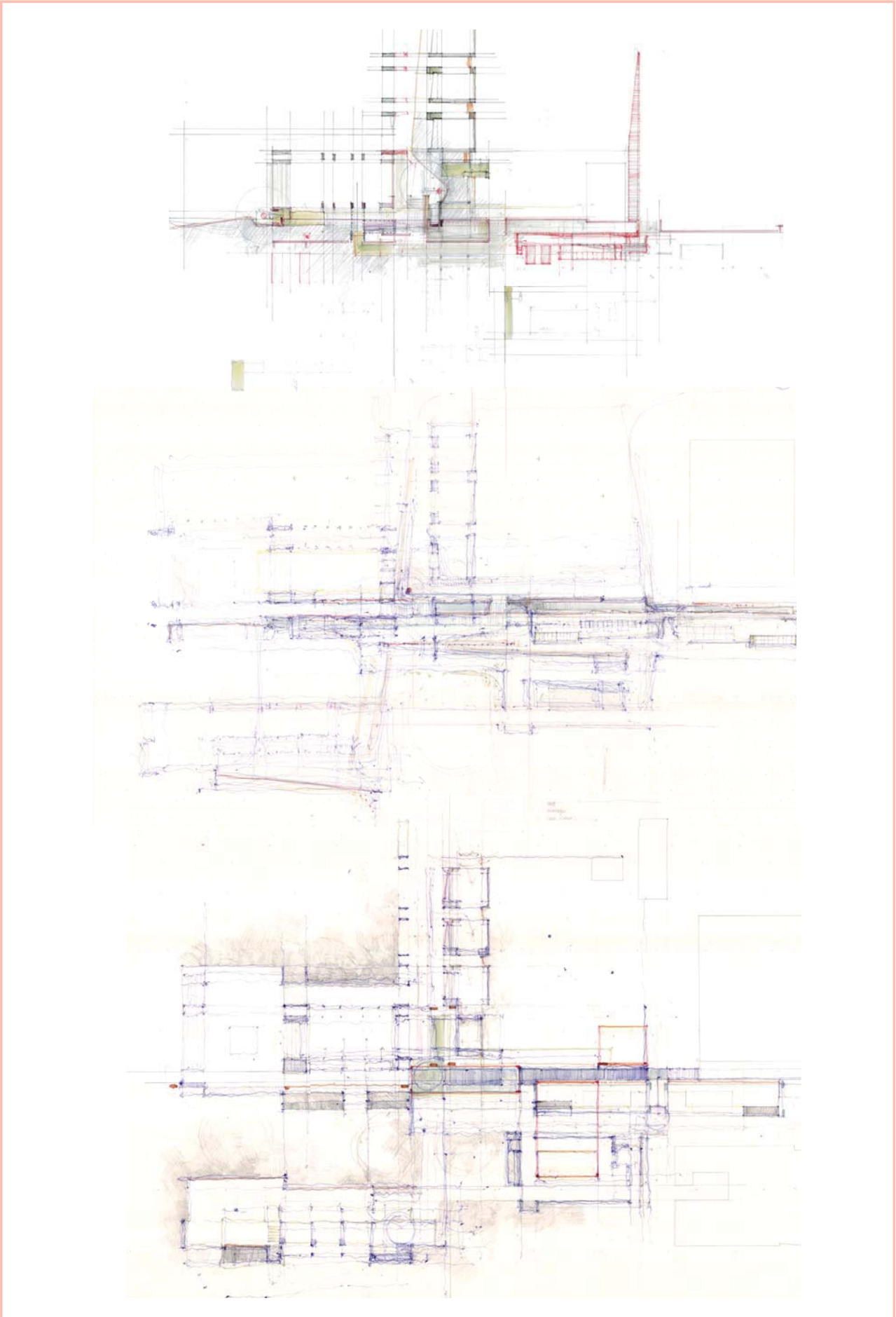
GROUND FLOOR

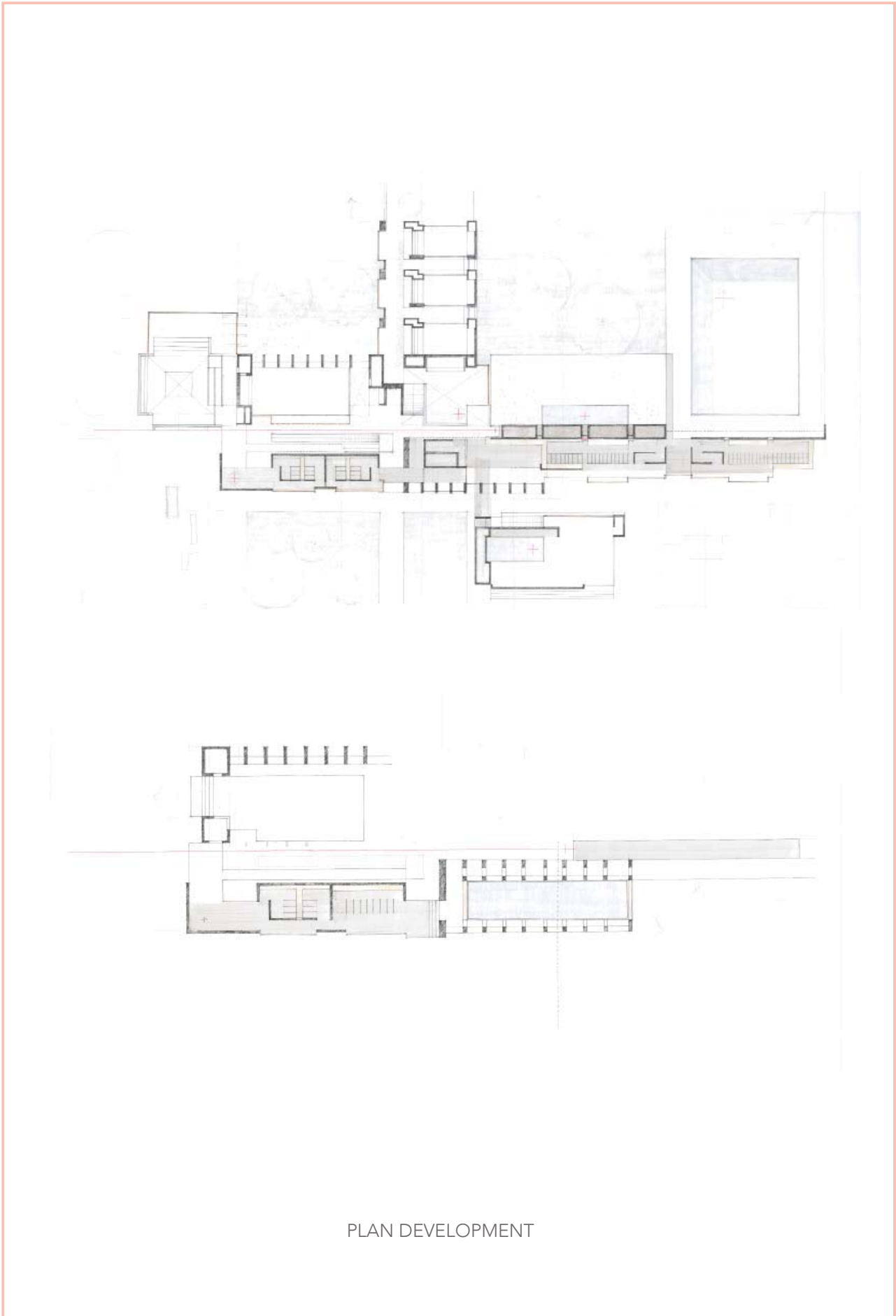


ACCESS  
CIRCULATION  
SIGHT LINES  
FIRST FLOOR

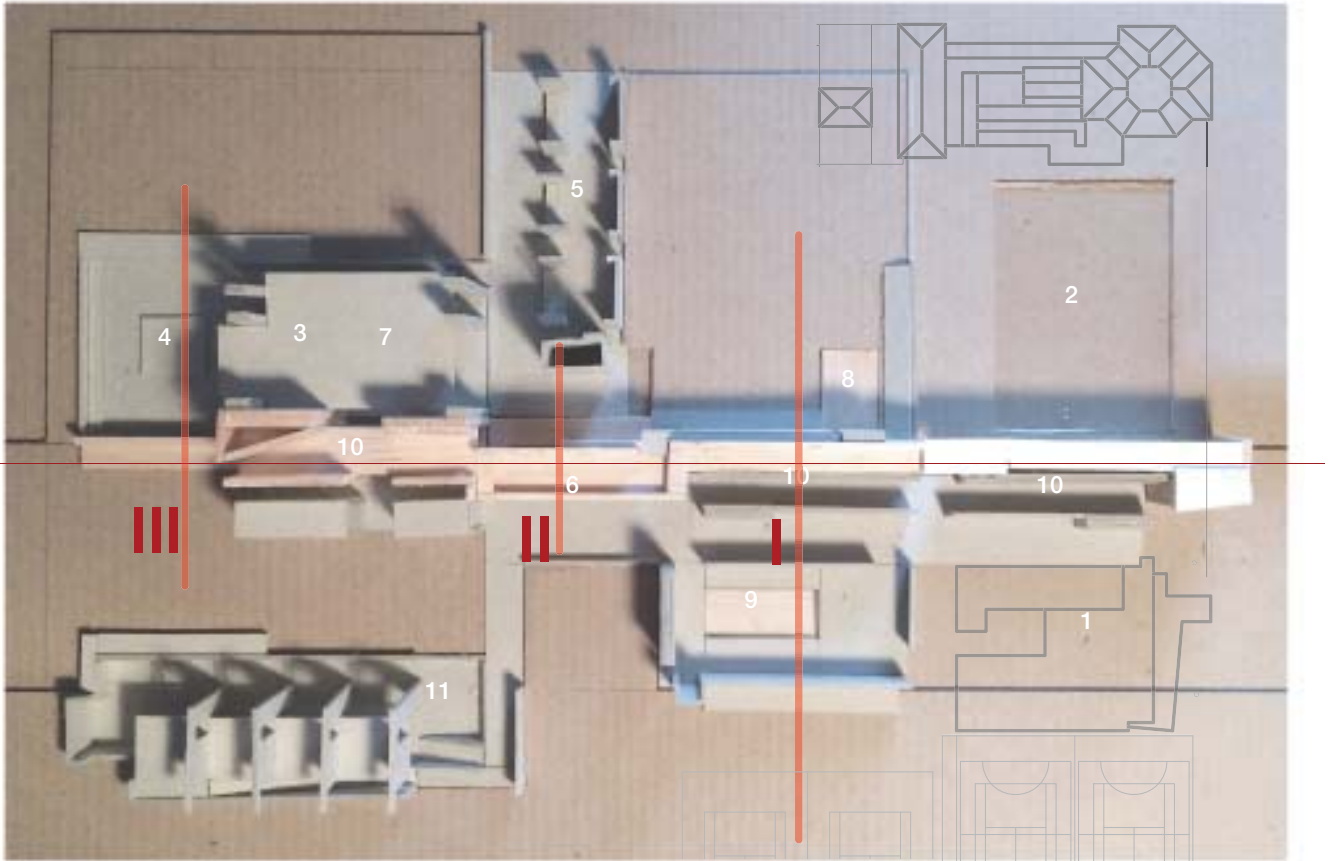








PLAN DEVELOPMENT



**EXISTING** 1 YEOVILLE CLINIC 2 YEOVILLE SWIMMING POOL  
**ADDITIONAL** 3 PUBLIC HALL 4 PUBLIC STAGE 5 PUBLIC STUDIOS 6 INDOOR SWIMMING POOL 7 GYMNASIUM 8 WADING POOL 9  
HYDROTHERAPY POOL 10 CHANGING ROOMS + ABLUTION 11 DAYCARE + AFTER-SCHOOL CARE

PROGRAMME





