

## CHAPTER

# 09

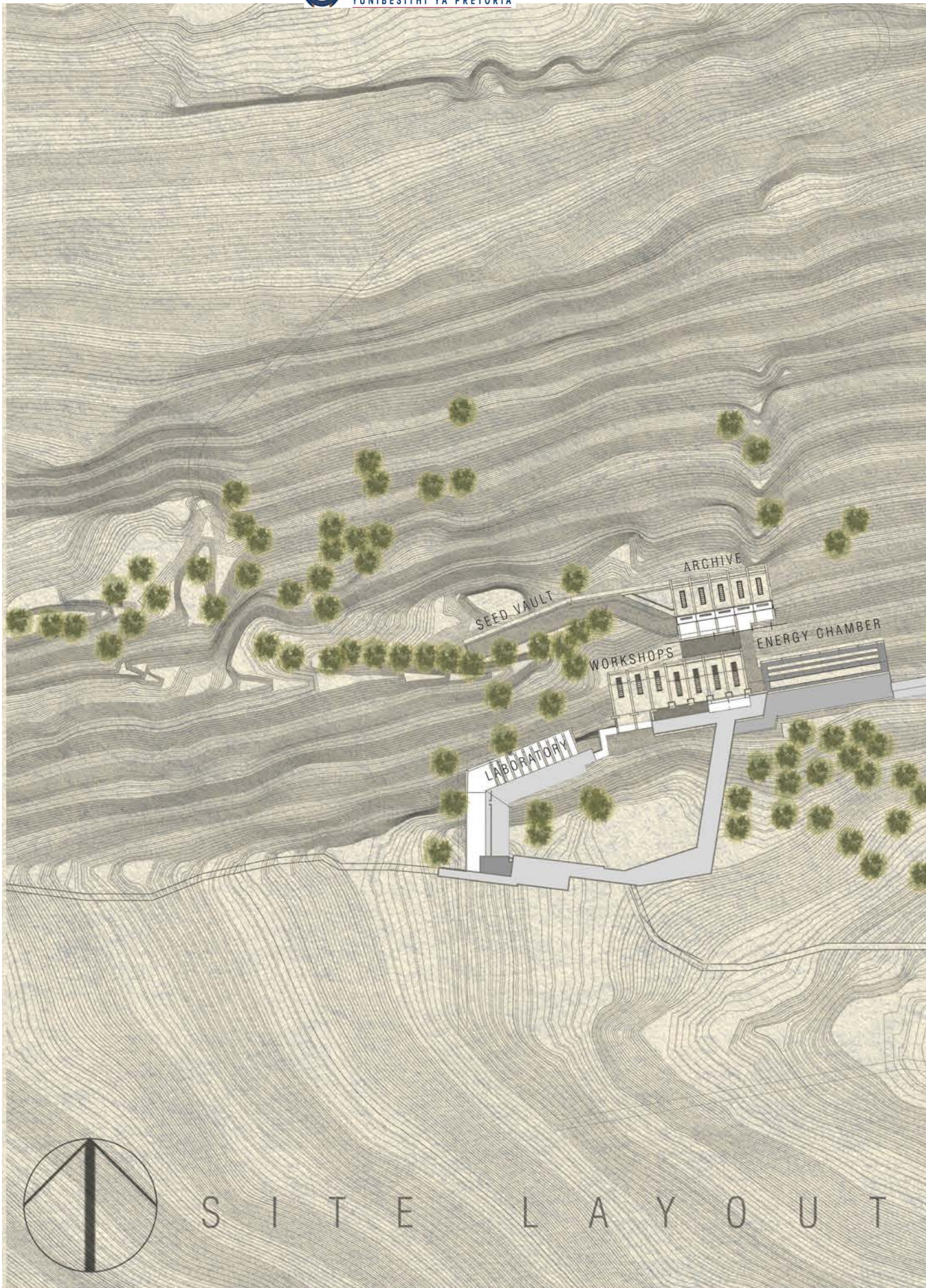
*This chapter aims to conclude  
the dissertation with final  
drawings and images.*

## 9.1. DISSERTATION CONCLUSION

To conclude this dissertation, the initial architectural and theoretical intentions were explored through the use of various functions and character groups. The first objective of protection is achieved through the use of robust construction. The second objective of observation is achieved through various camouflaged spaces that allow the user groups to observe without being seen. The third objective of merging margins is achieved through the use of specific activities that facilitate the user groups to adapt and assist each other through the struggle to regain their identities. The fourth objective of resilience is achieved through the use of alternative energy strategies which includes passive solar, ventilation, heating and cooling strategies.

Due to the speculative nature of the dissertation, it was the hope of the author to suggest an alternative way of creating architecture that provokes meaning and thinking. The journey of the project involved processes of questioning, struggle and contemplation in order to achieve an imperfect product open for interpretation.





151 Figure 184: Final site layout. (2016)







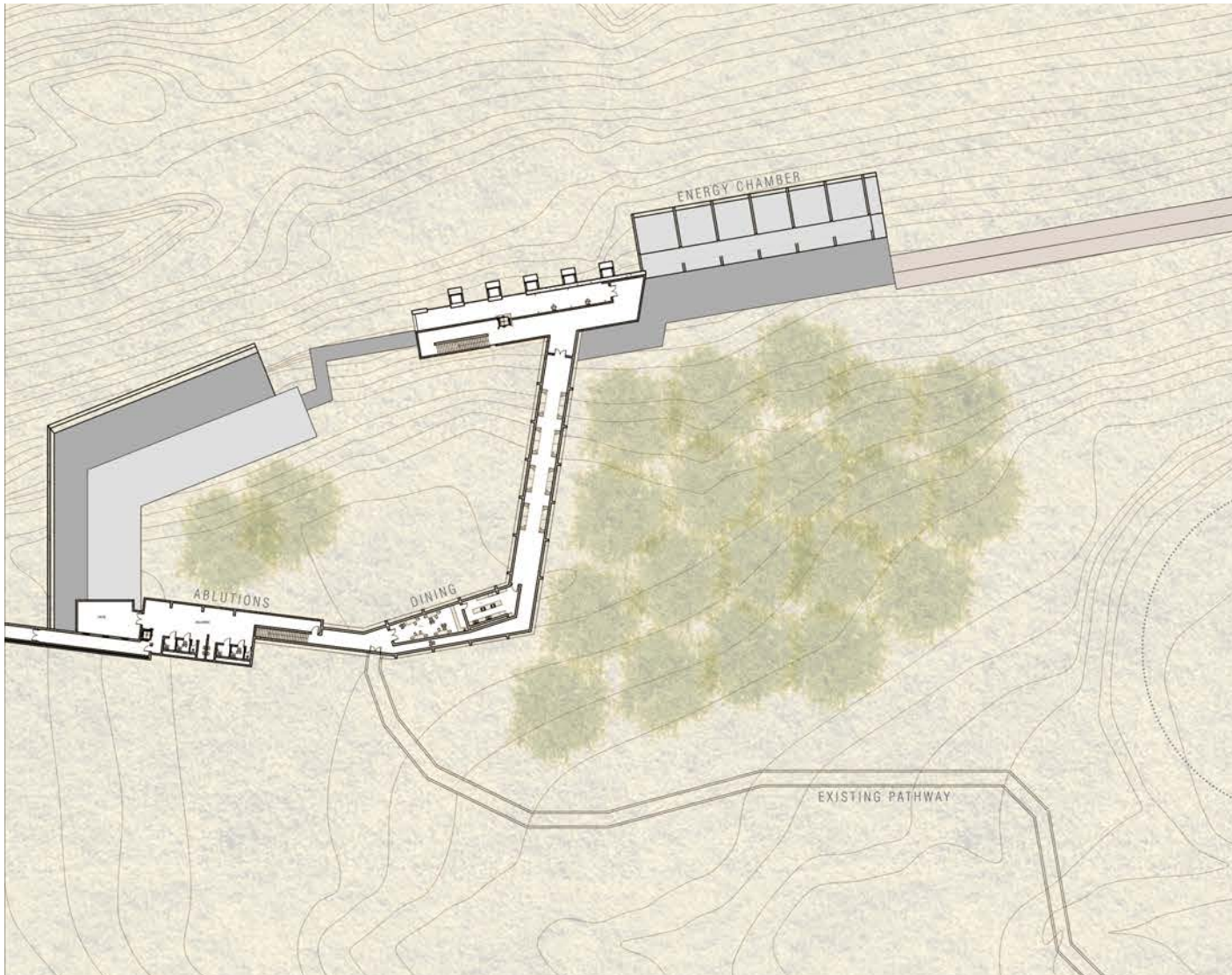
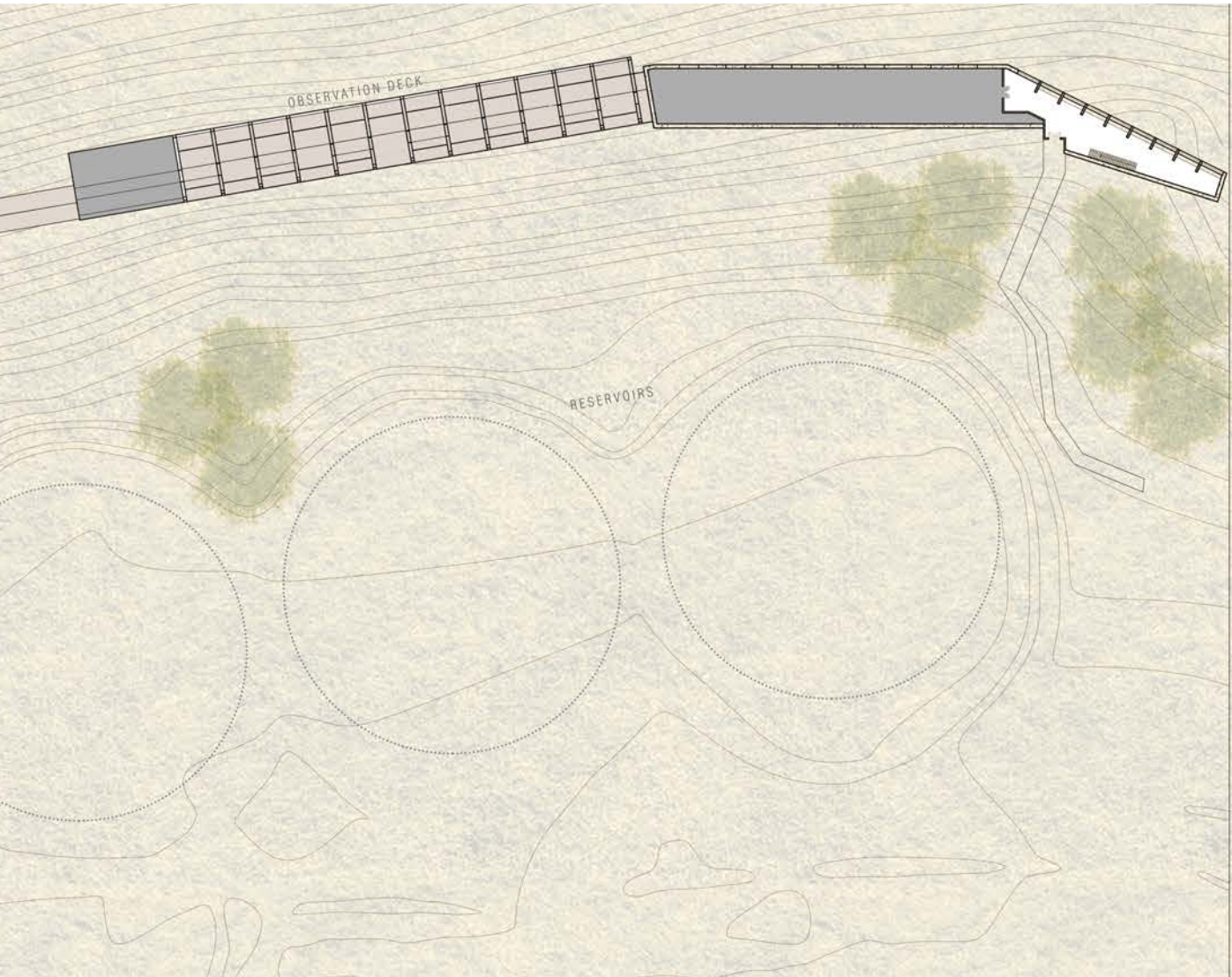


Figure 185: Final LEVEL 2 layout. (2016)





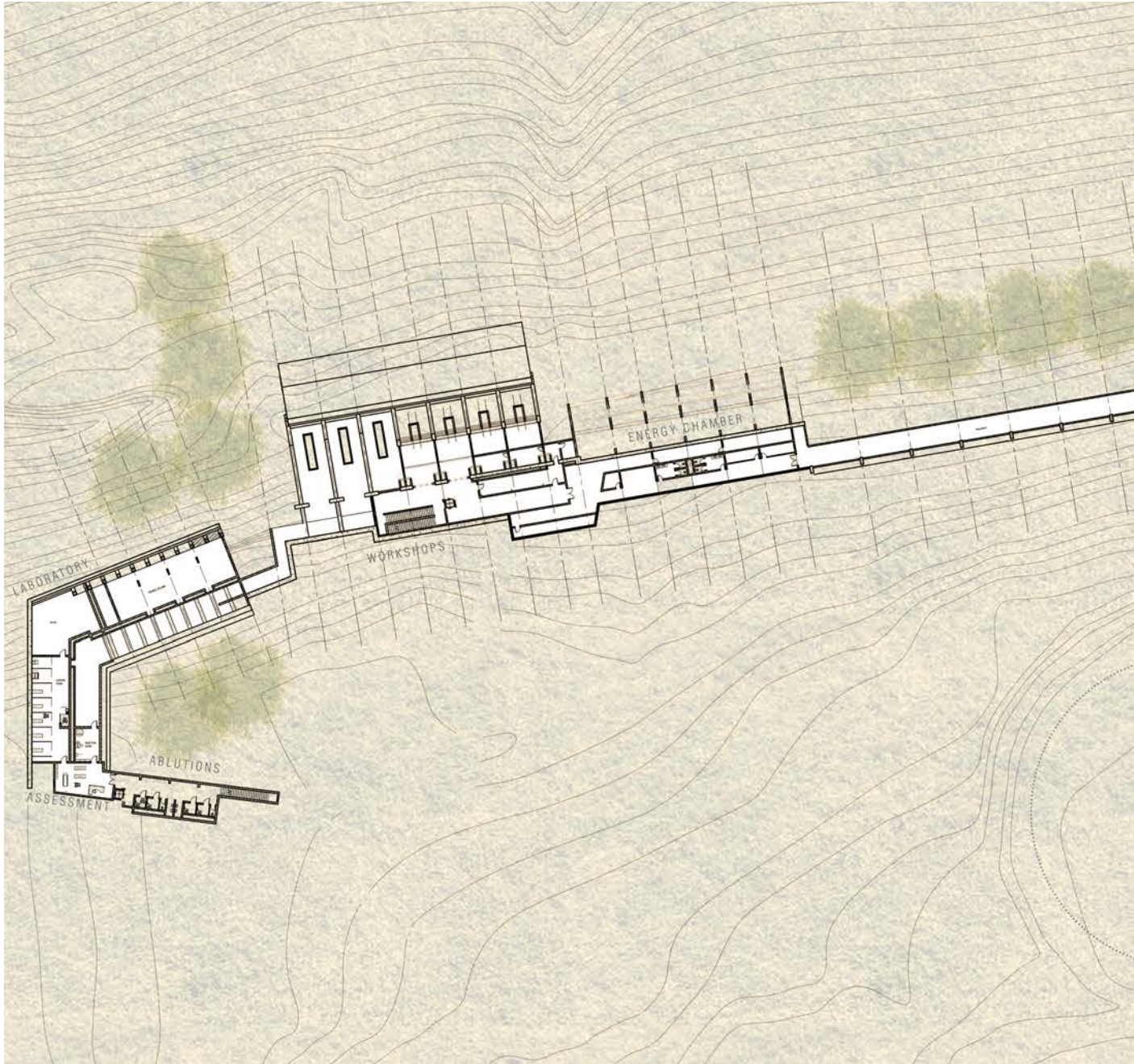
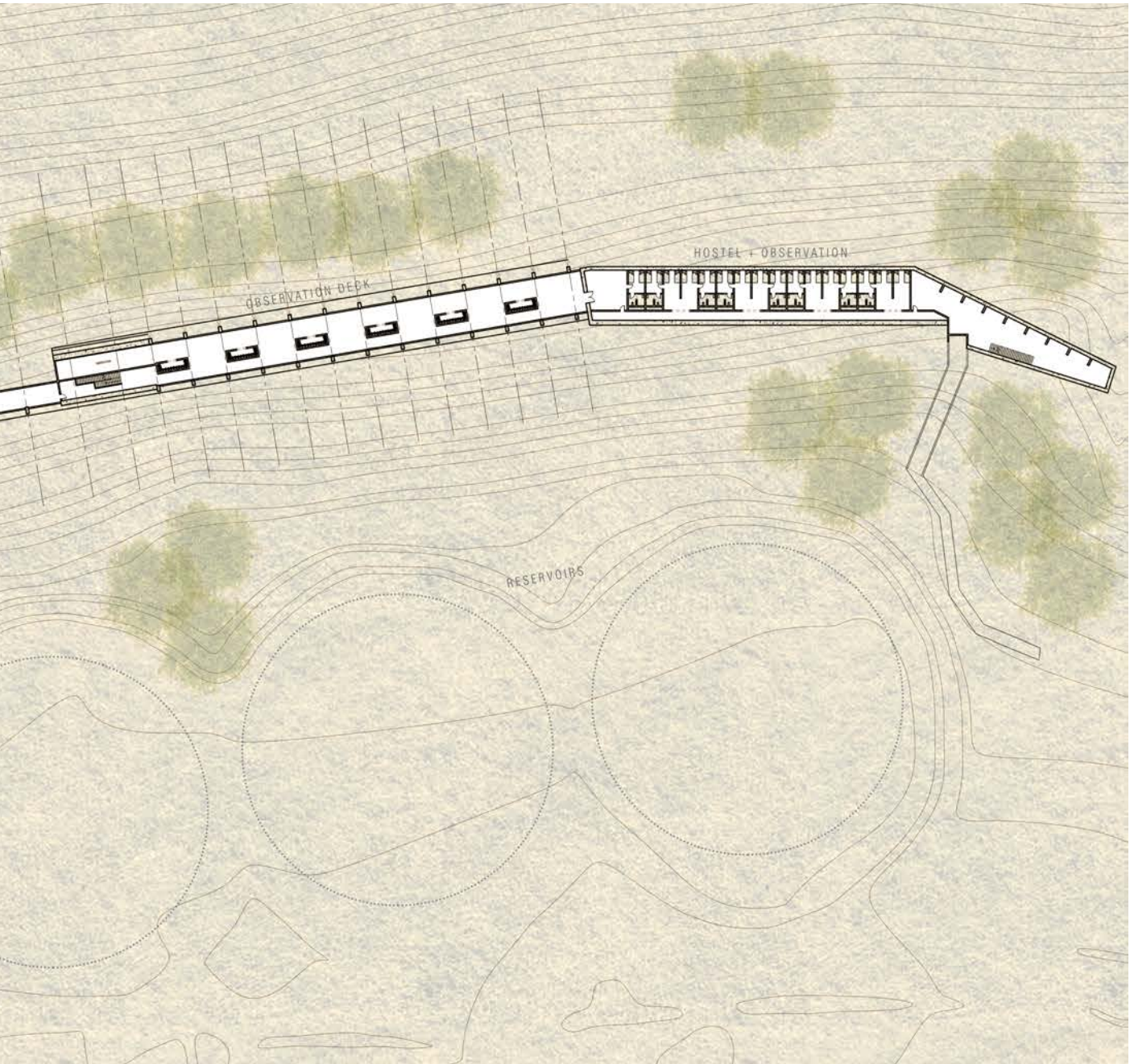


Figure 186: Final LEVEL 3 layout. (2016)







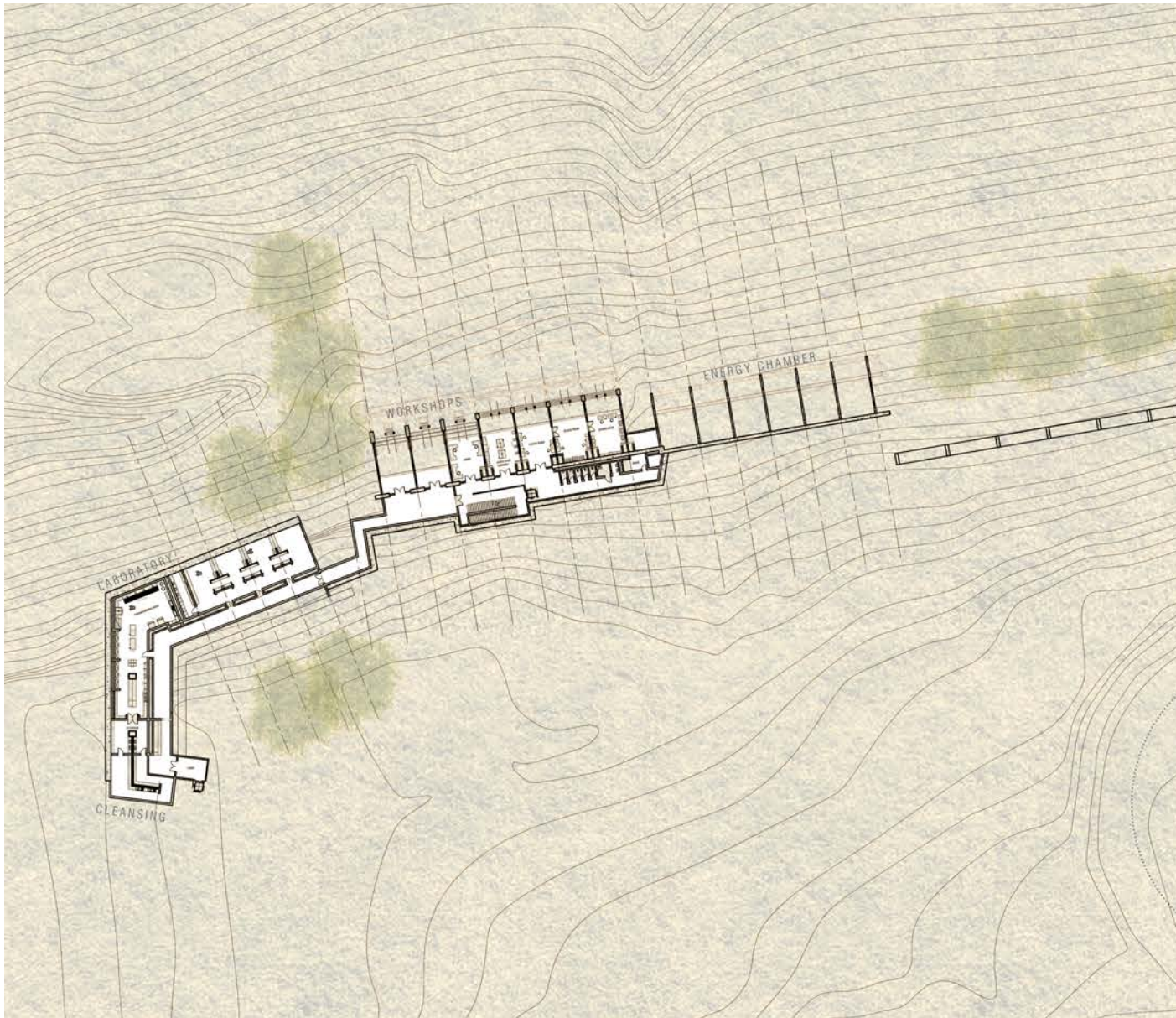
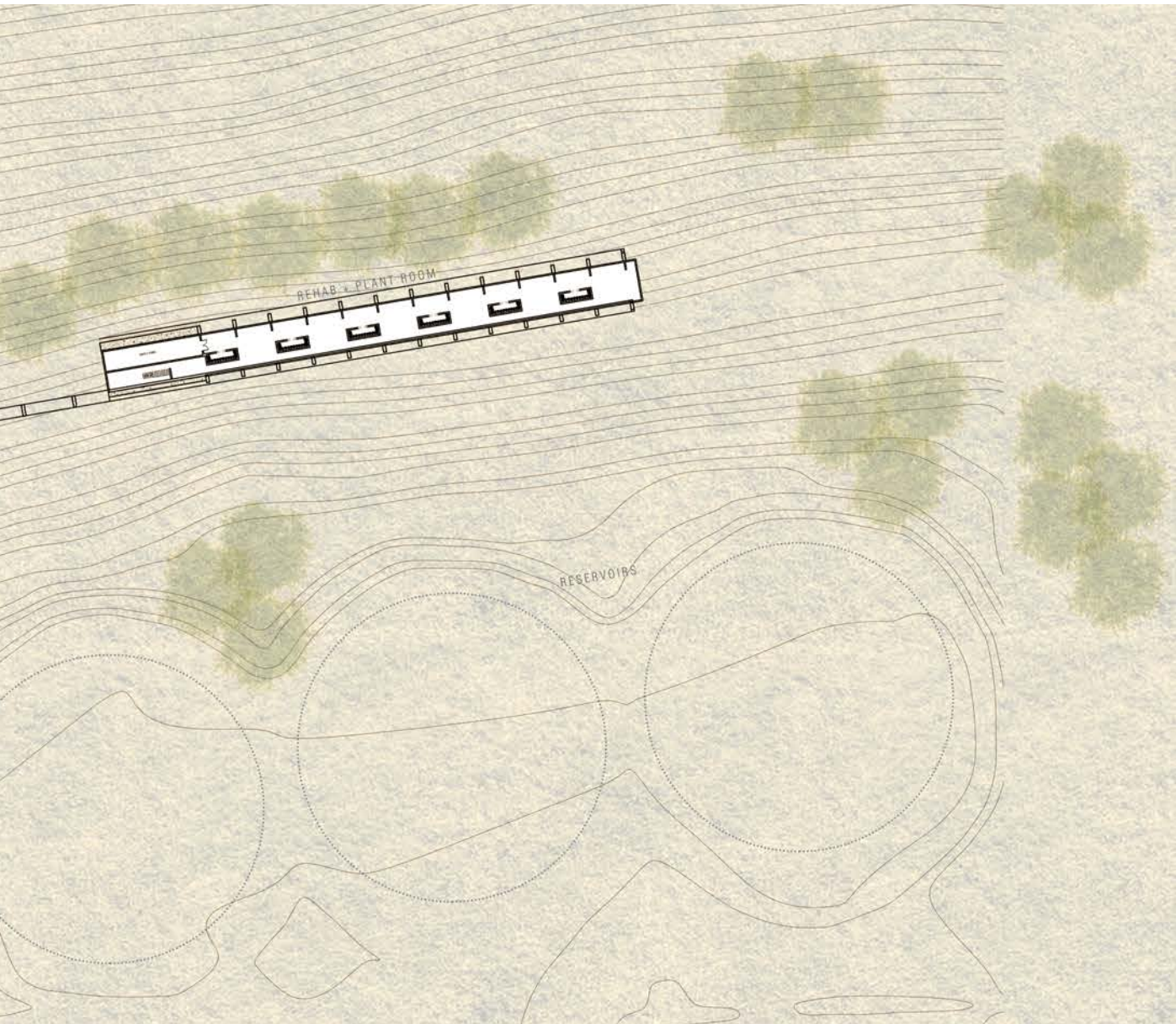


Figure 187: Final LEVEL 4 layout. (2016)







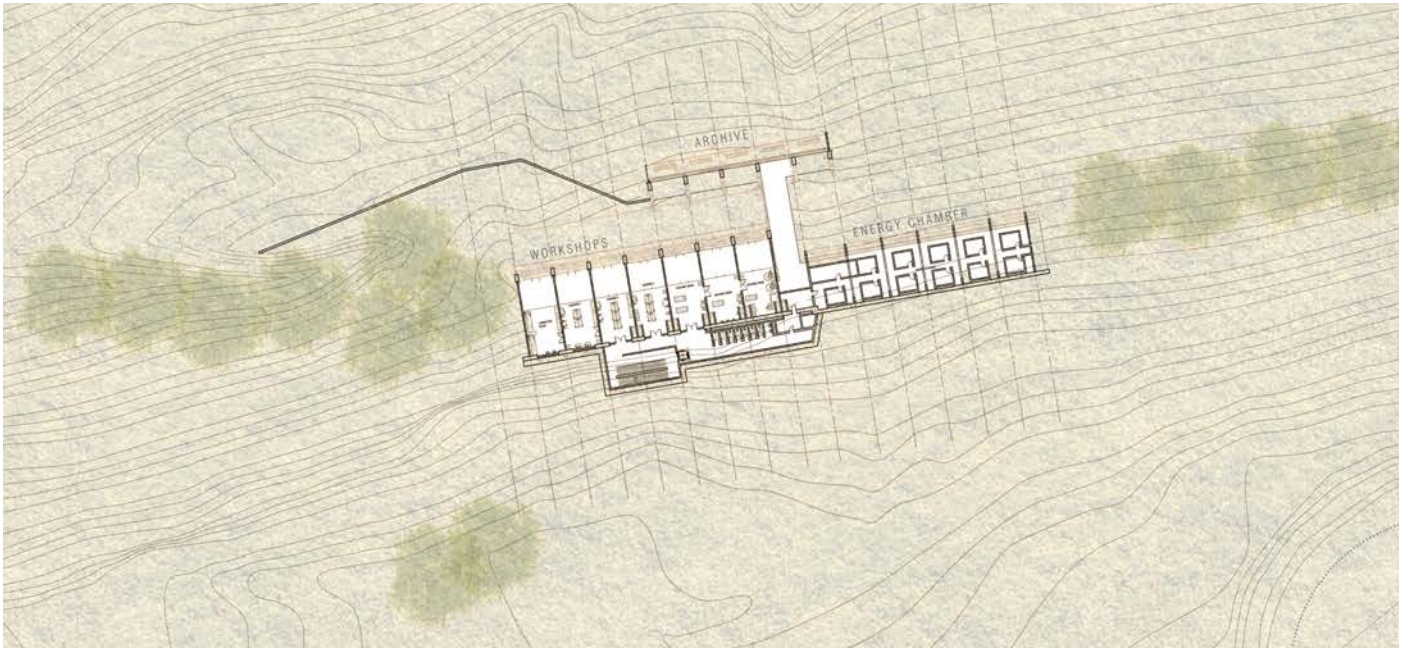


Figure 188: Final LEVEL 5 layout. (2016)

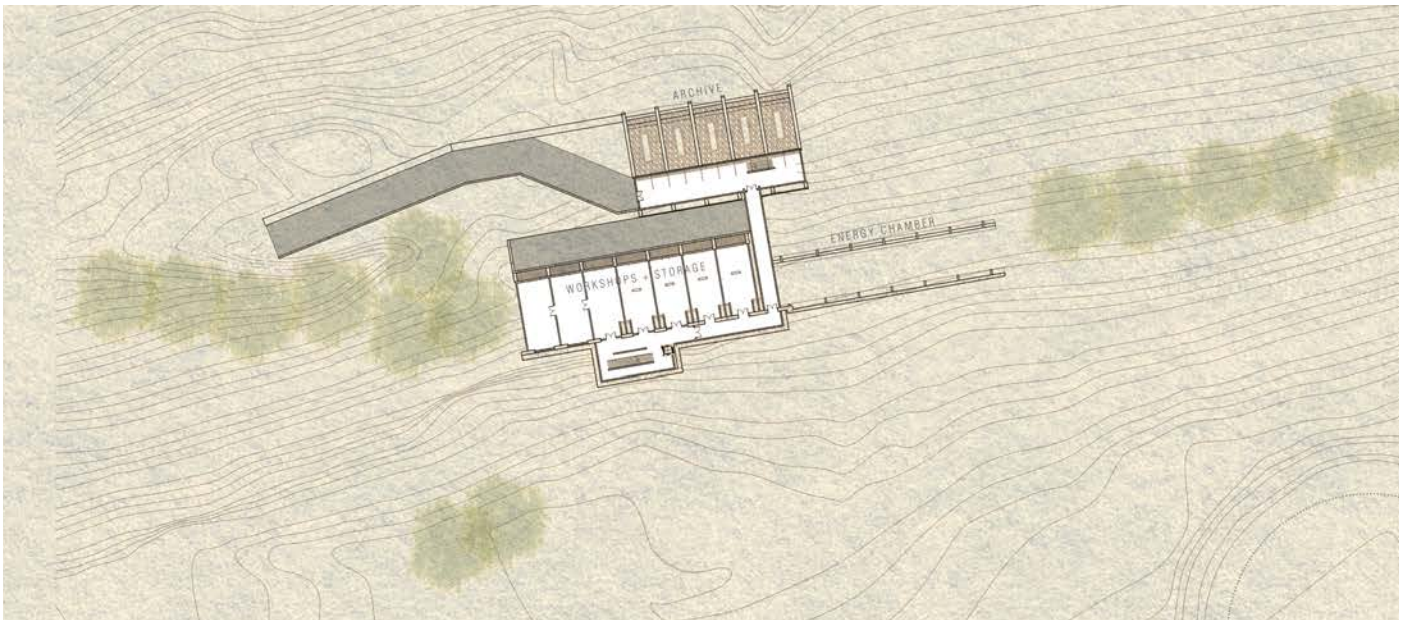


Figure 189: Final LEVEL 6 layout. (2016)





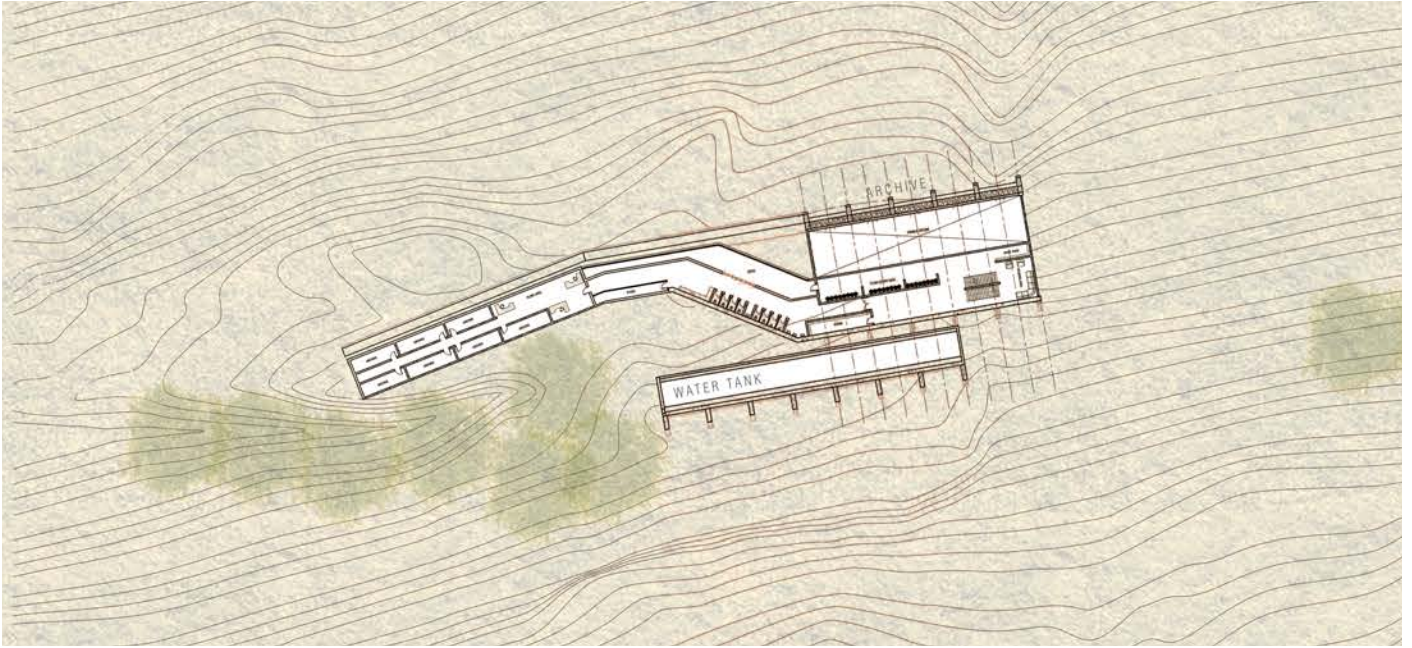


Figure 190: Final LEVEL 7 layout. (2016)

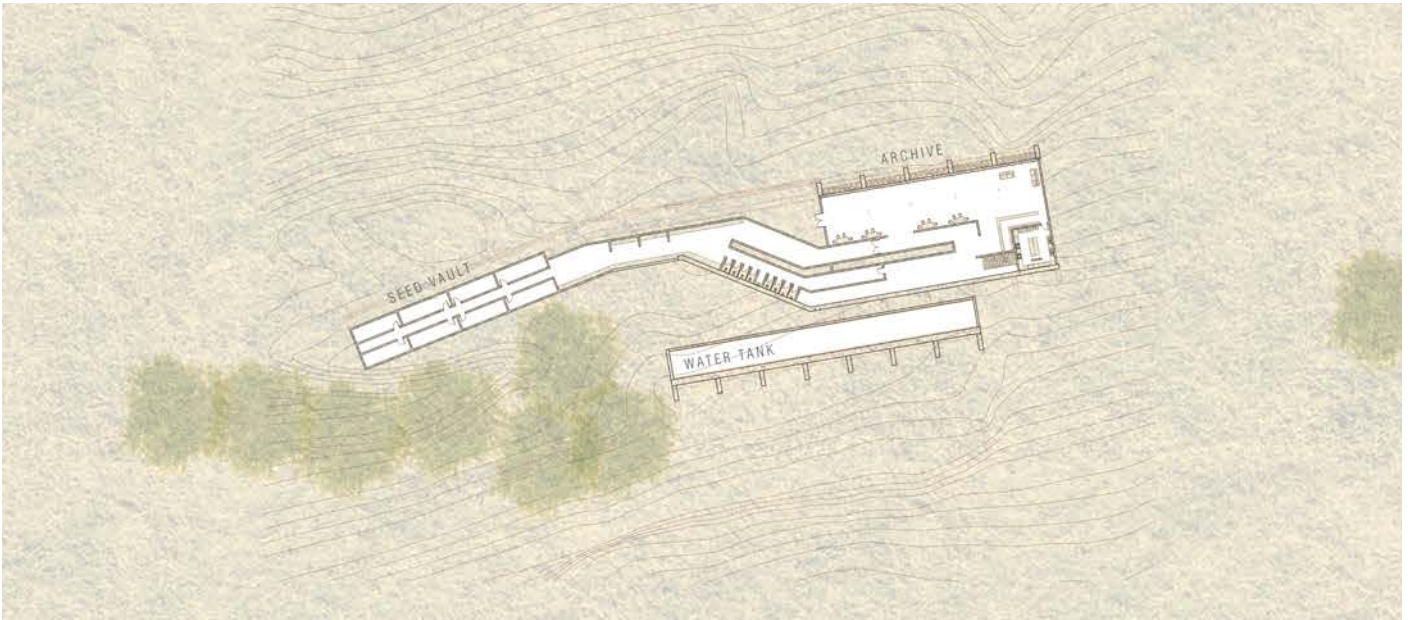
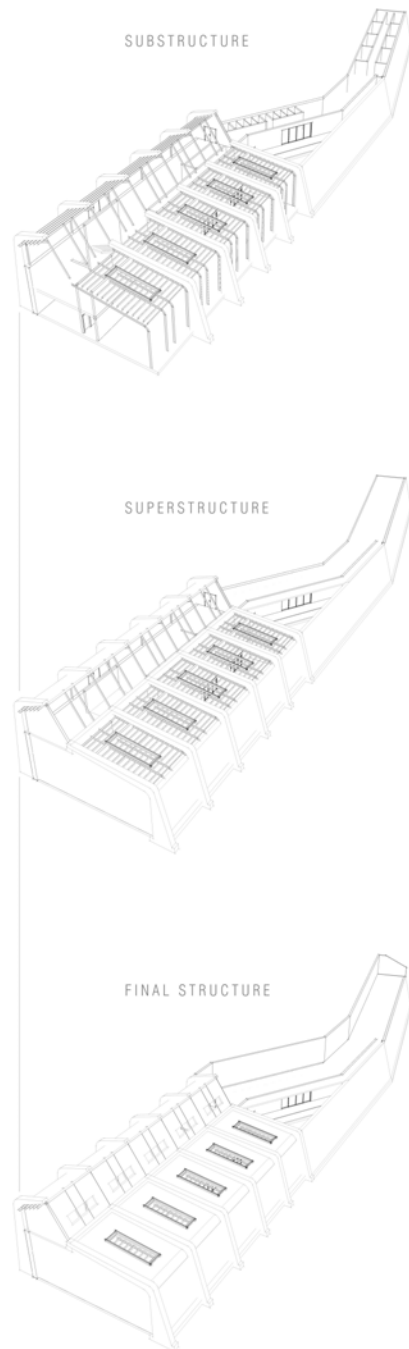
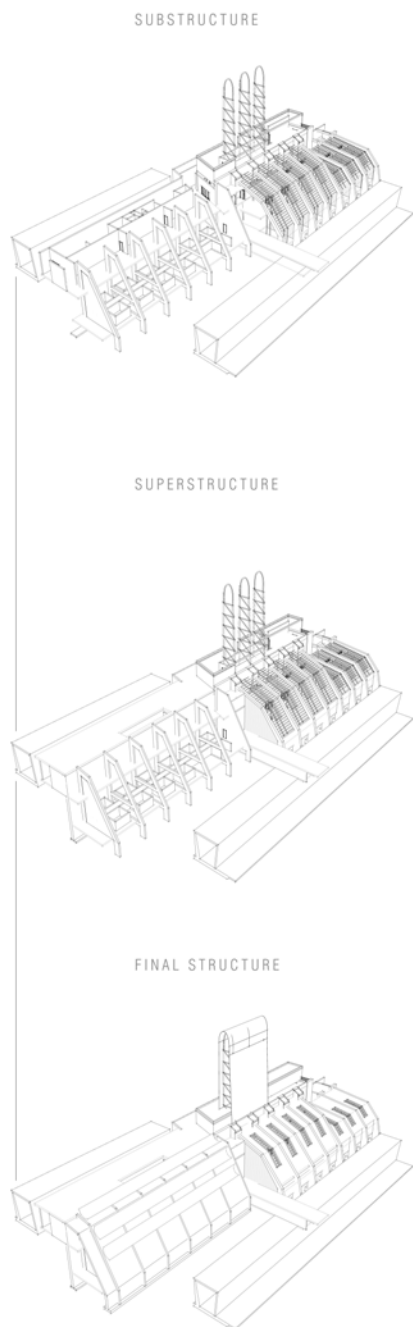
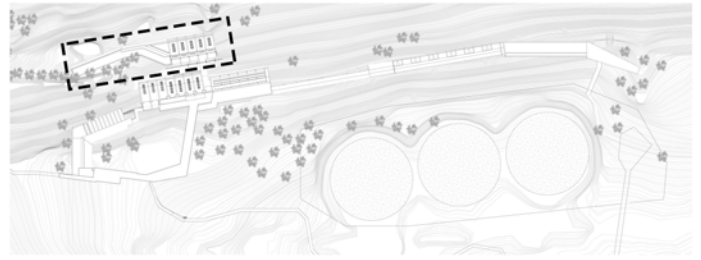
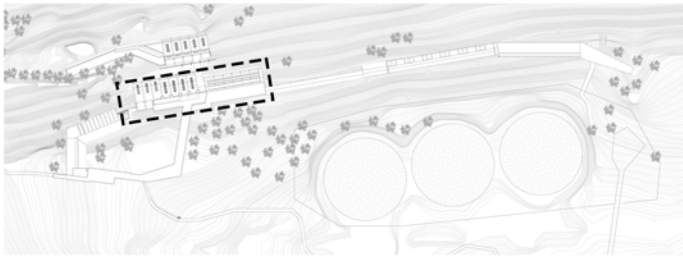


Figure 191: Final LEVEL 8 layout. (2016)









L A B O R A T O R Y

O B S E R V A T I O N   D E C K

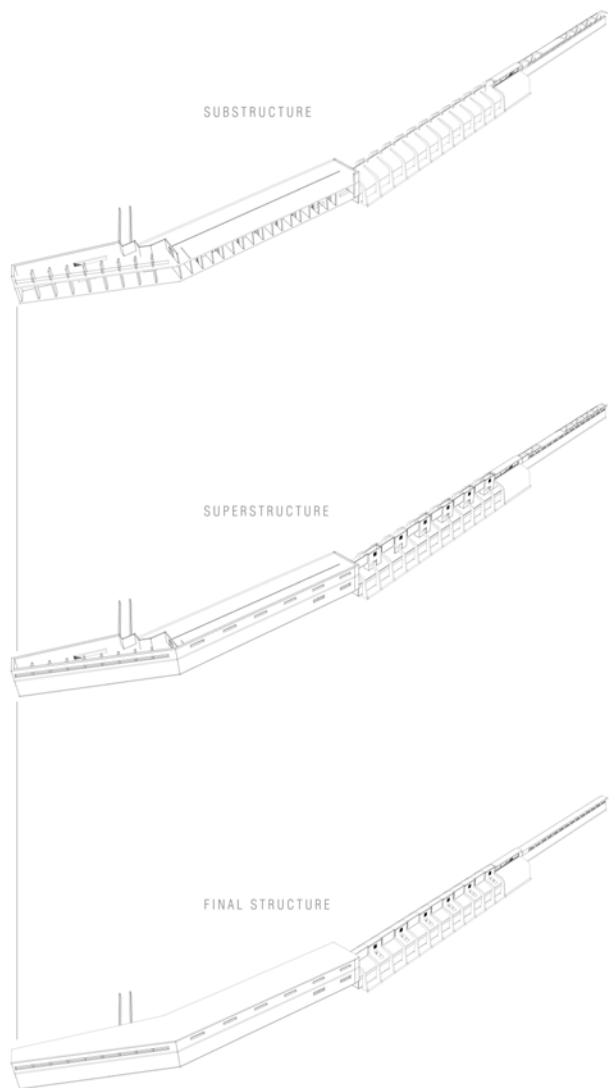
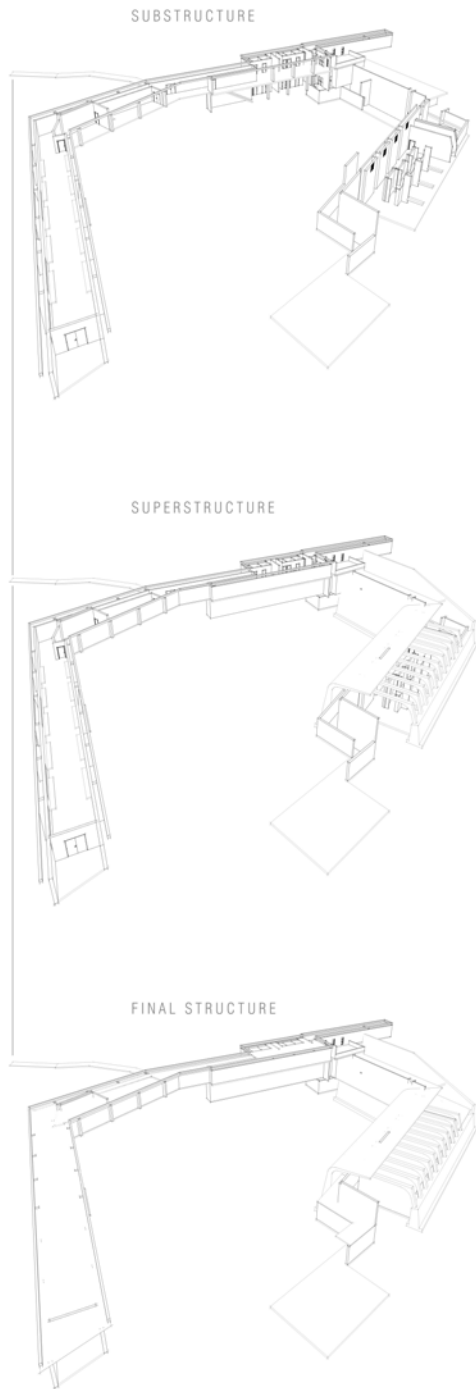
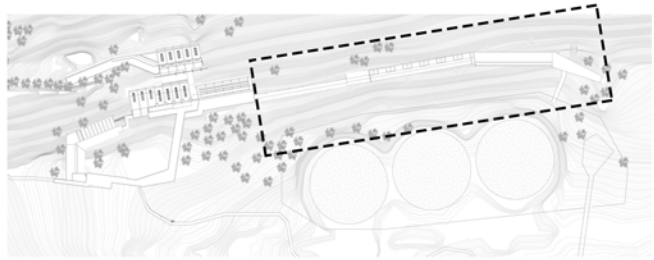
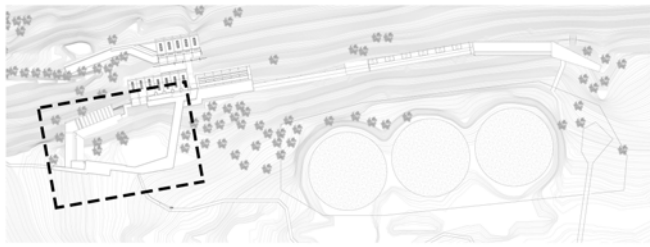


Figure 193: Structural clarification of the Laboratory and Observation deck buildings. (2016)



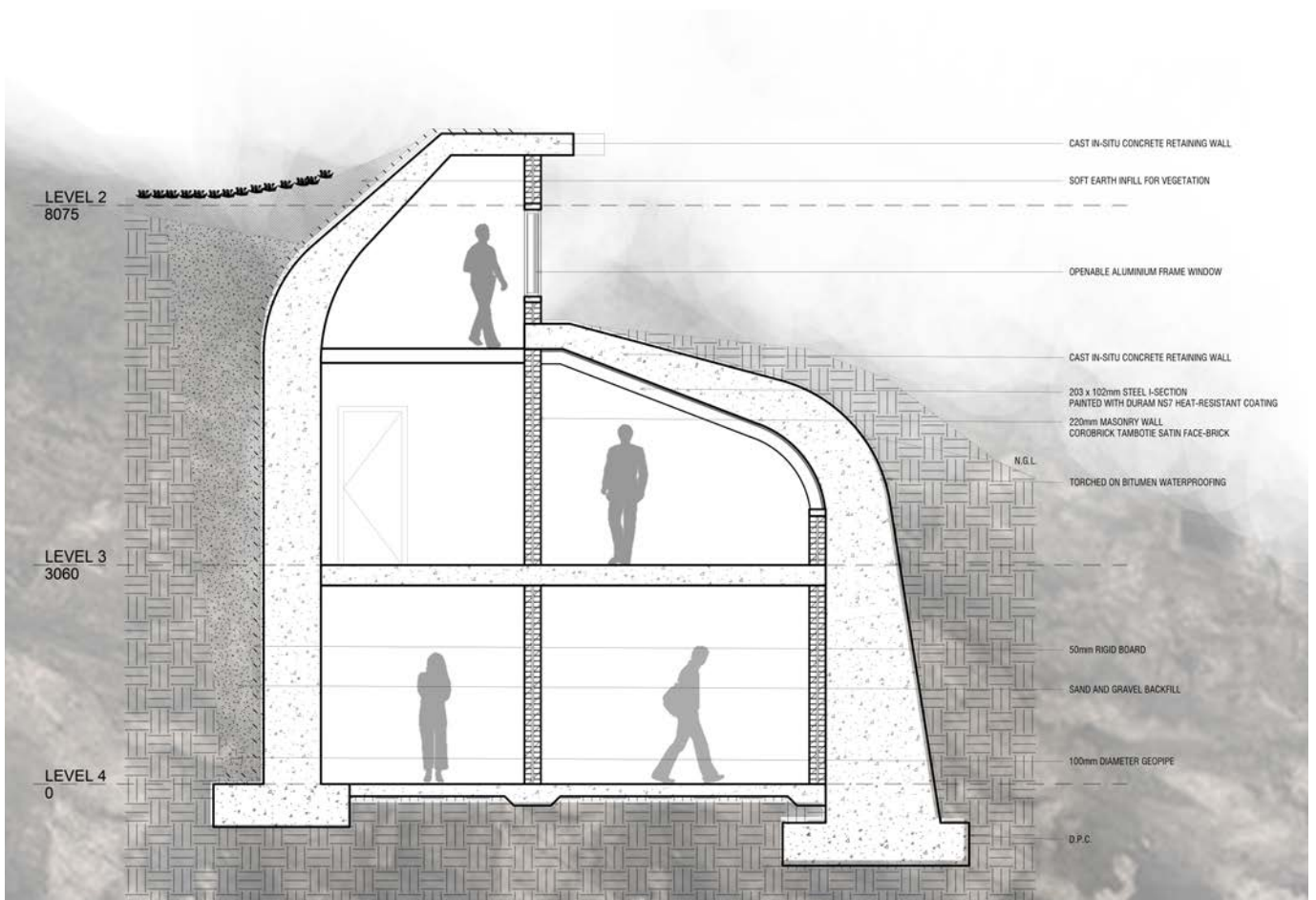
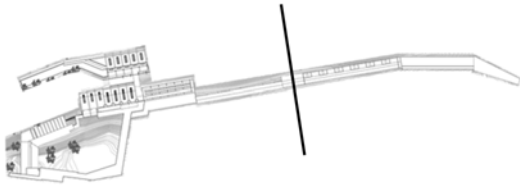


Figure 194: Detail (not to scale) of the Observation deck. (2016)

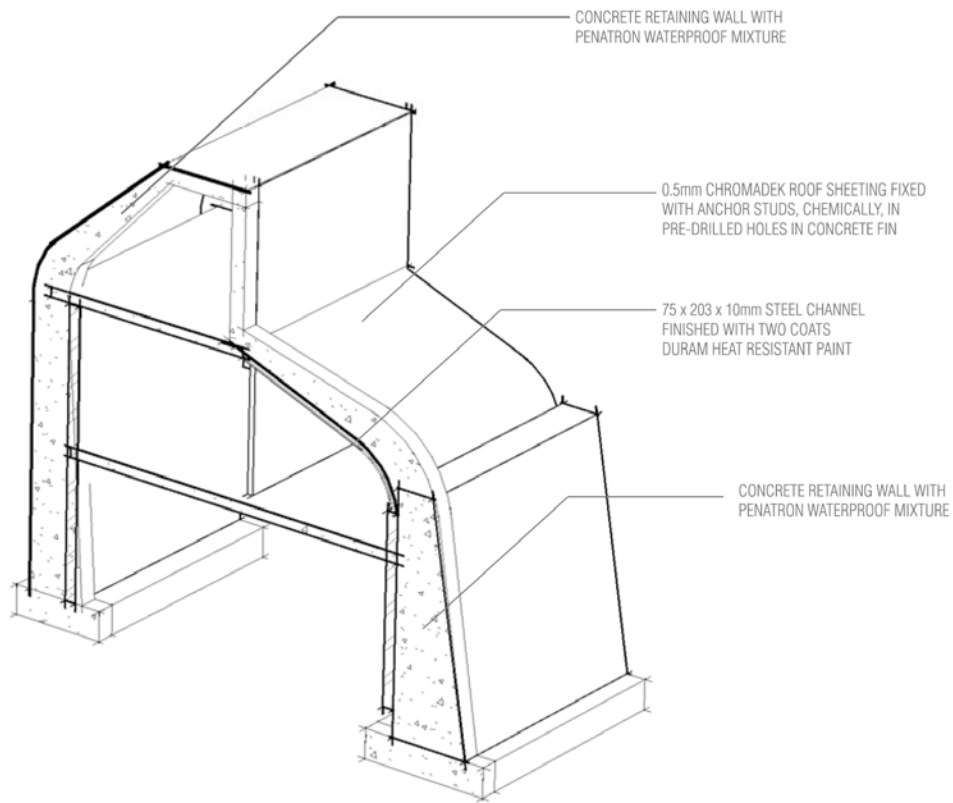


Figure 195: 3-dimensional detail (not to scale) of the Observation deck. (2016)

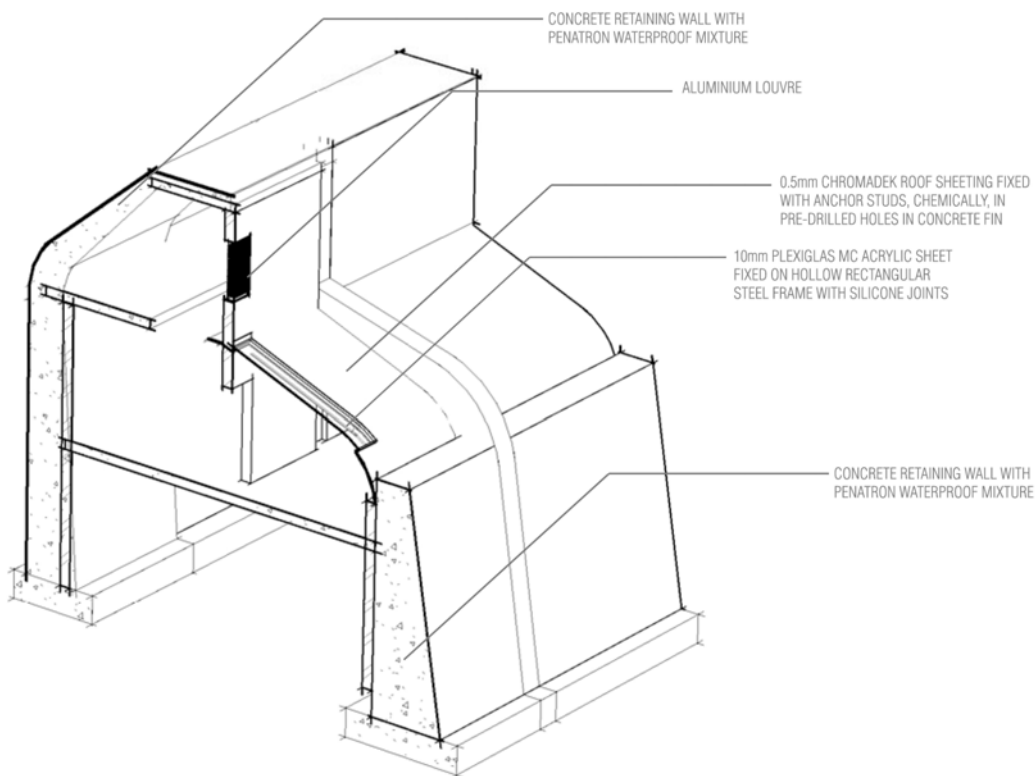


Figure 196: 3-dimensional detail (not to scale) of the Observation deck. (2016)



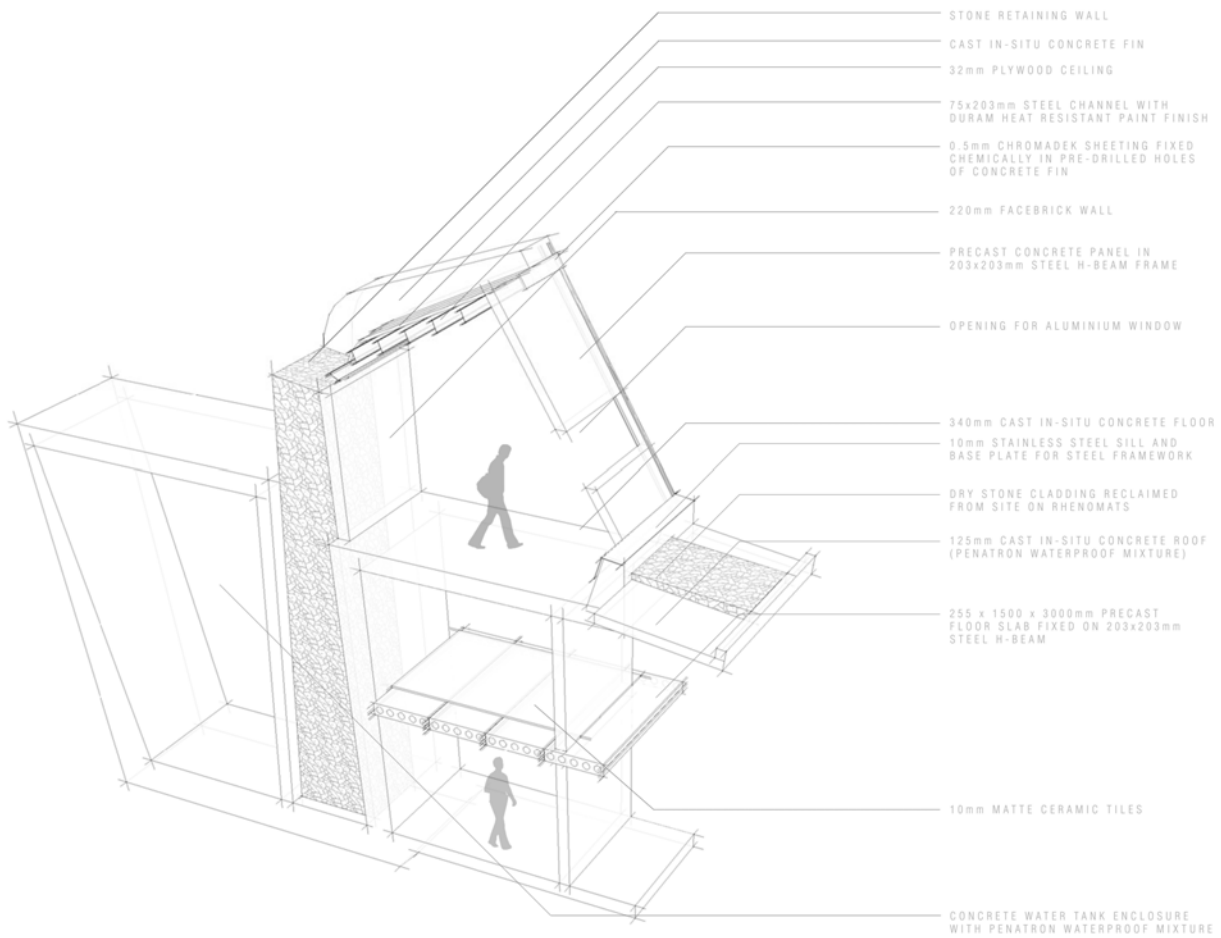


Figure 197: 3-dimensional detail (not to scale) of the Archive. (2016)

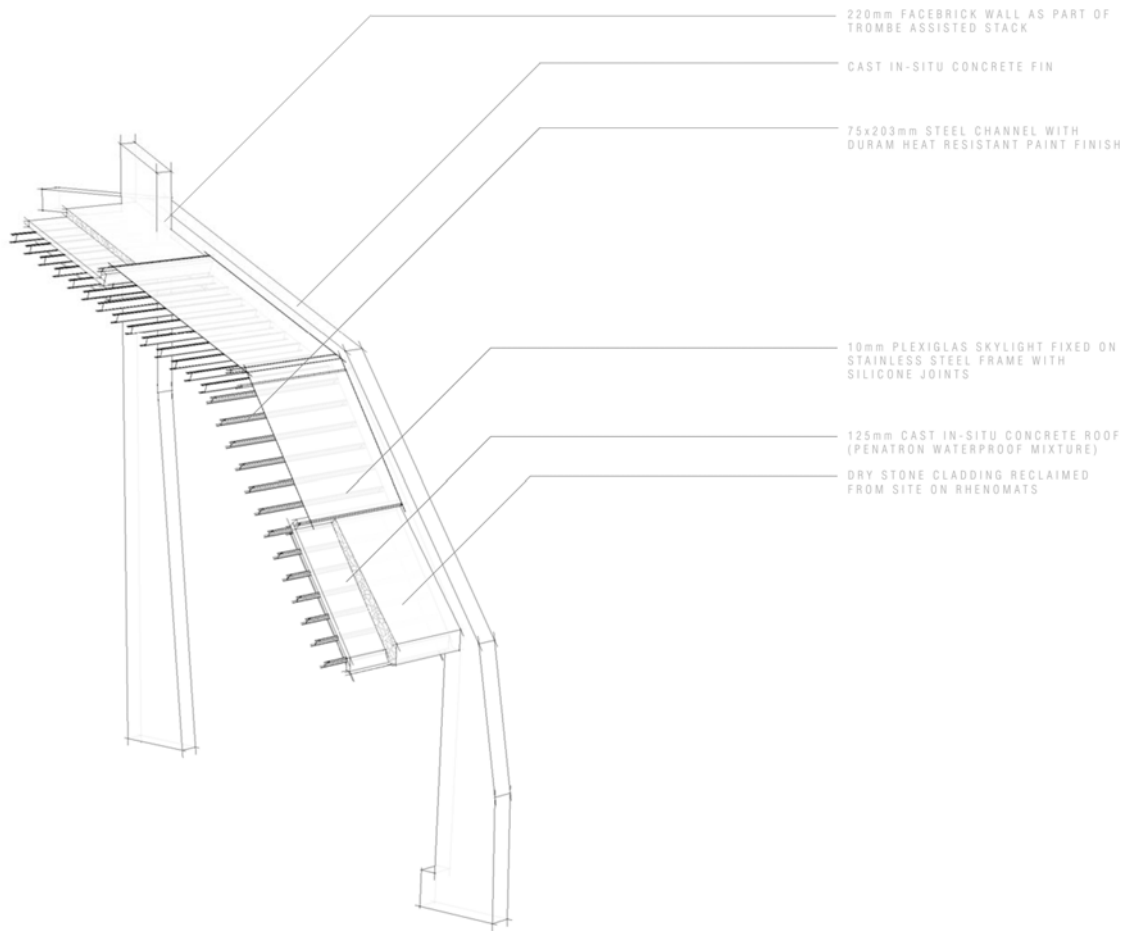


Figure 198: 3-dimensional detail (not to scale) of the Archive. (2016)



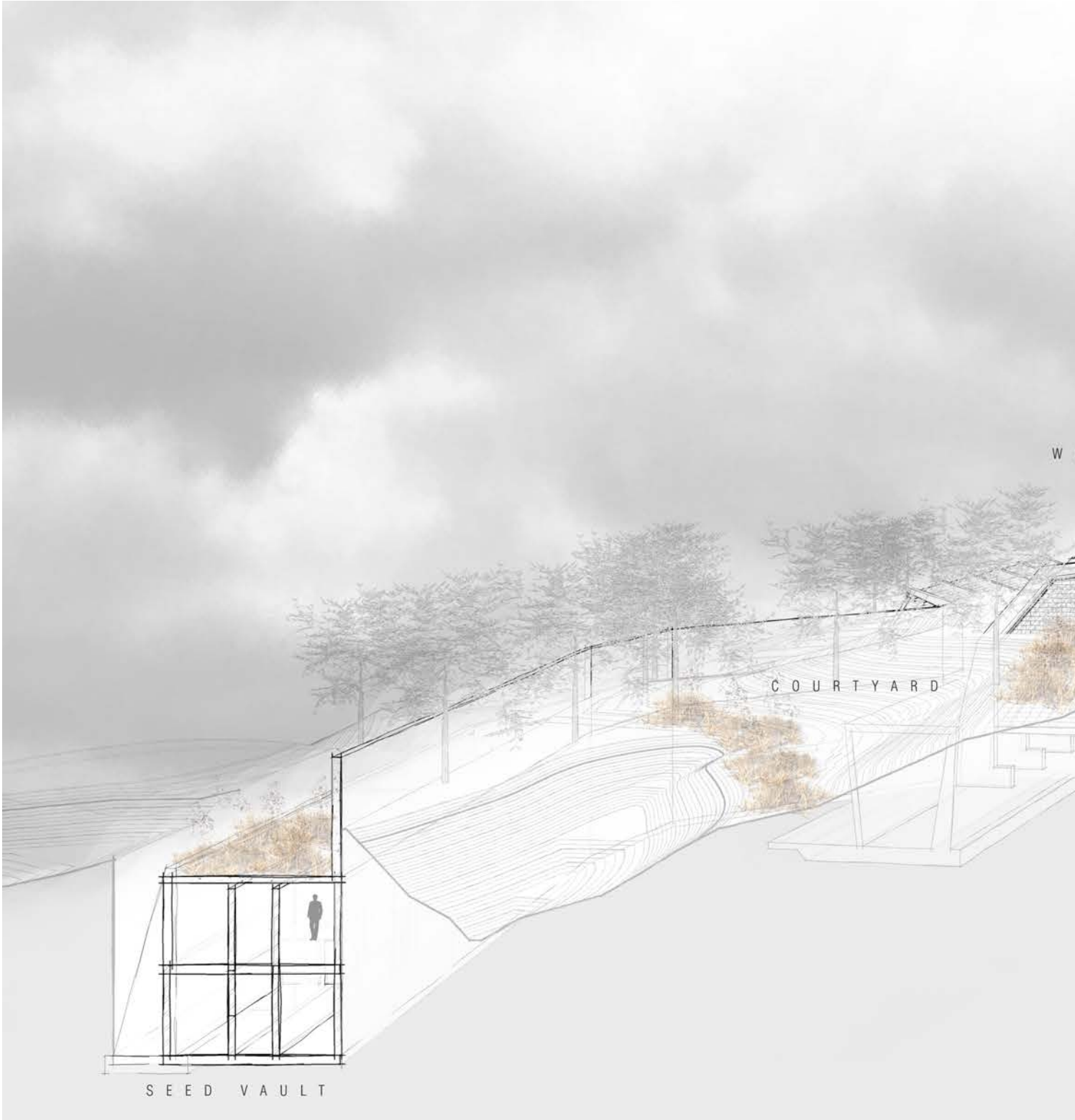
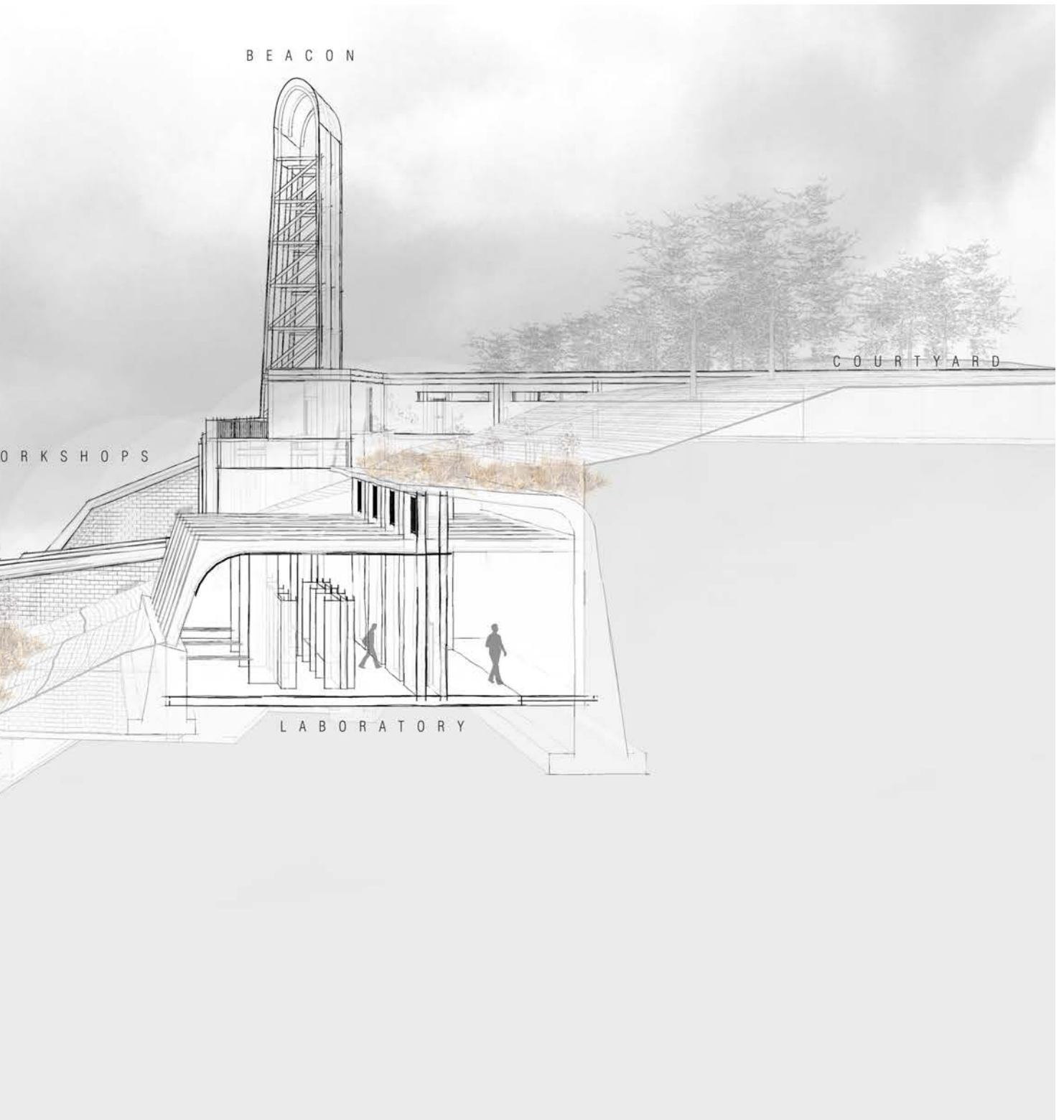


Figure 199: 3-dimensional section of the Laboratory (right) and the seed vault (left). (2016)





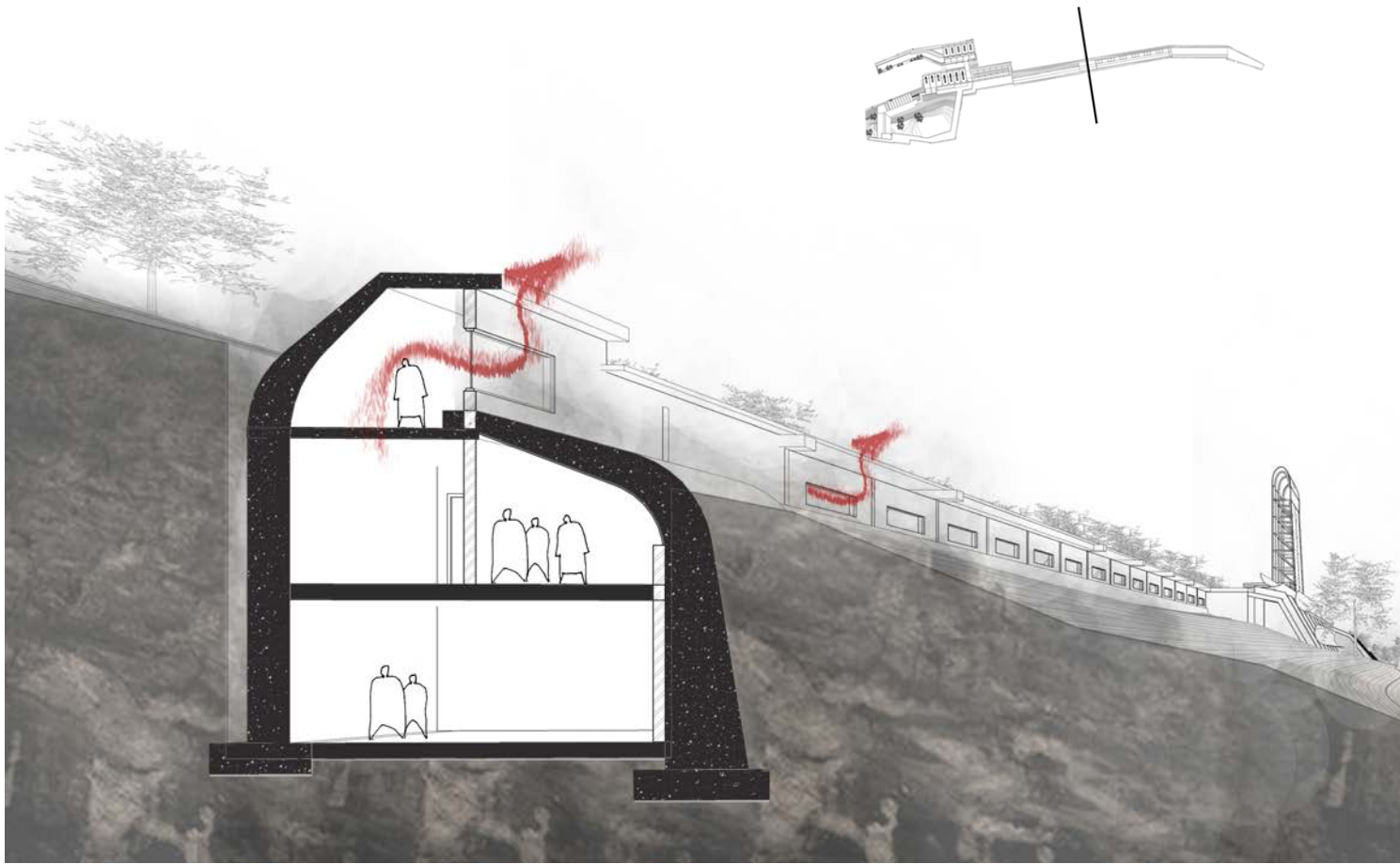


Figure 200: 3-dimensional section (not to scale) of the Observation deck, illustrating how hot air is extracted from the building during summer. (2016)

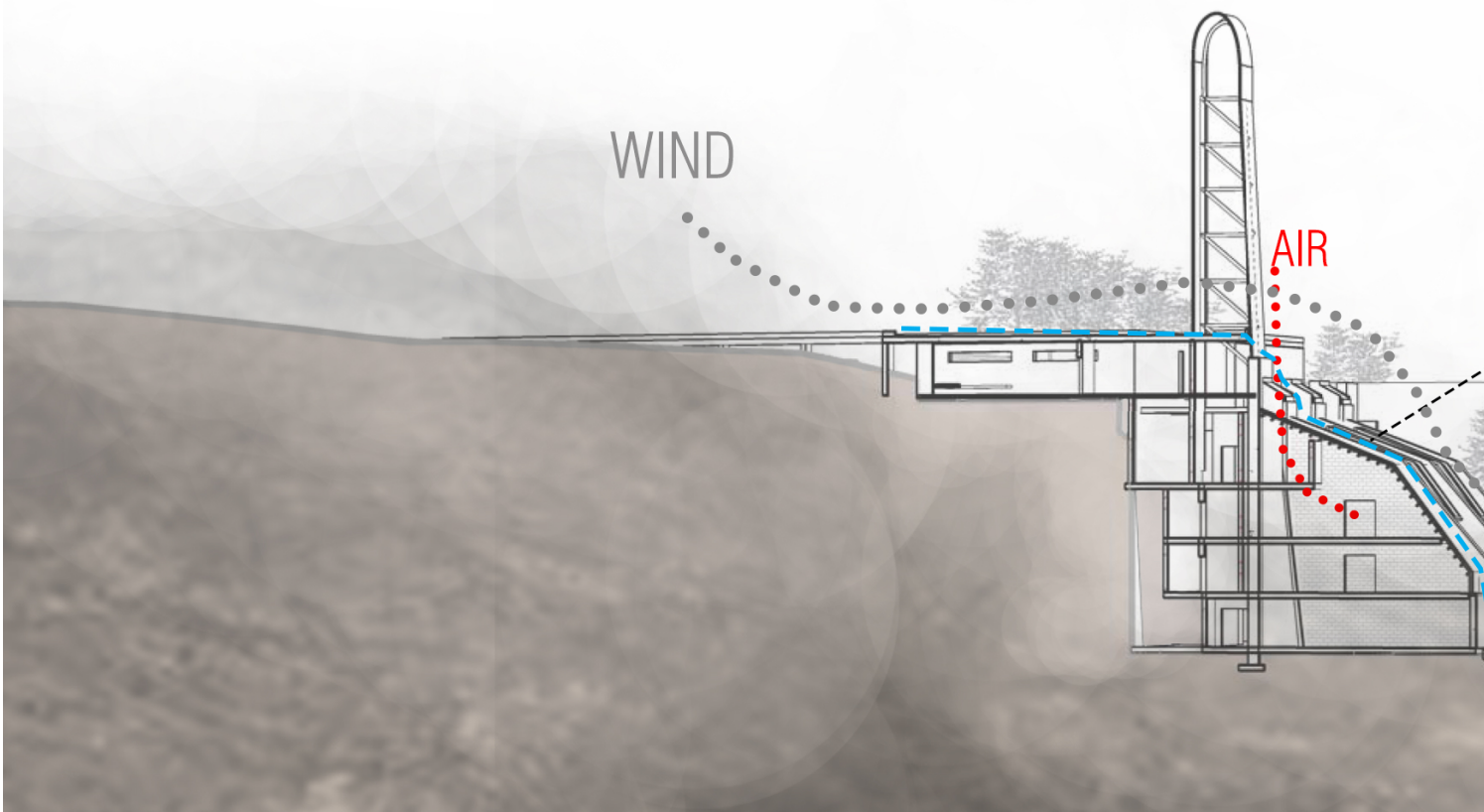


Figure 201: 3-dimensional section of the Workshops and Archive, illustrating how passive strategies were considered. (2016)

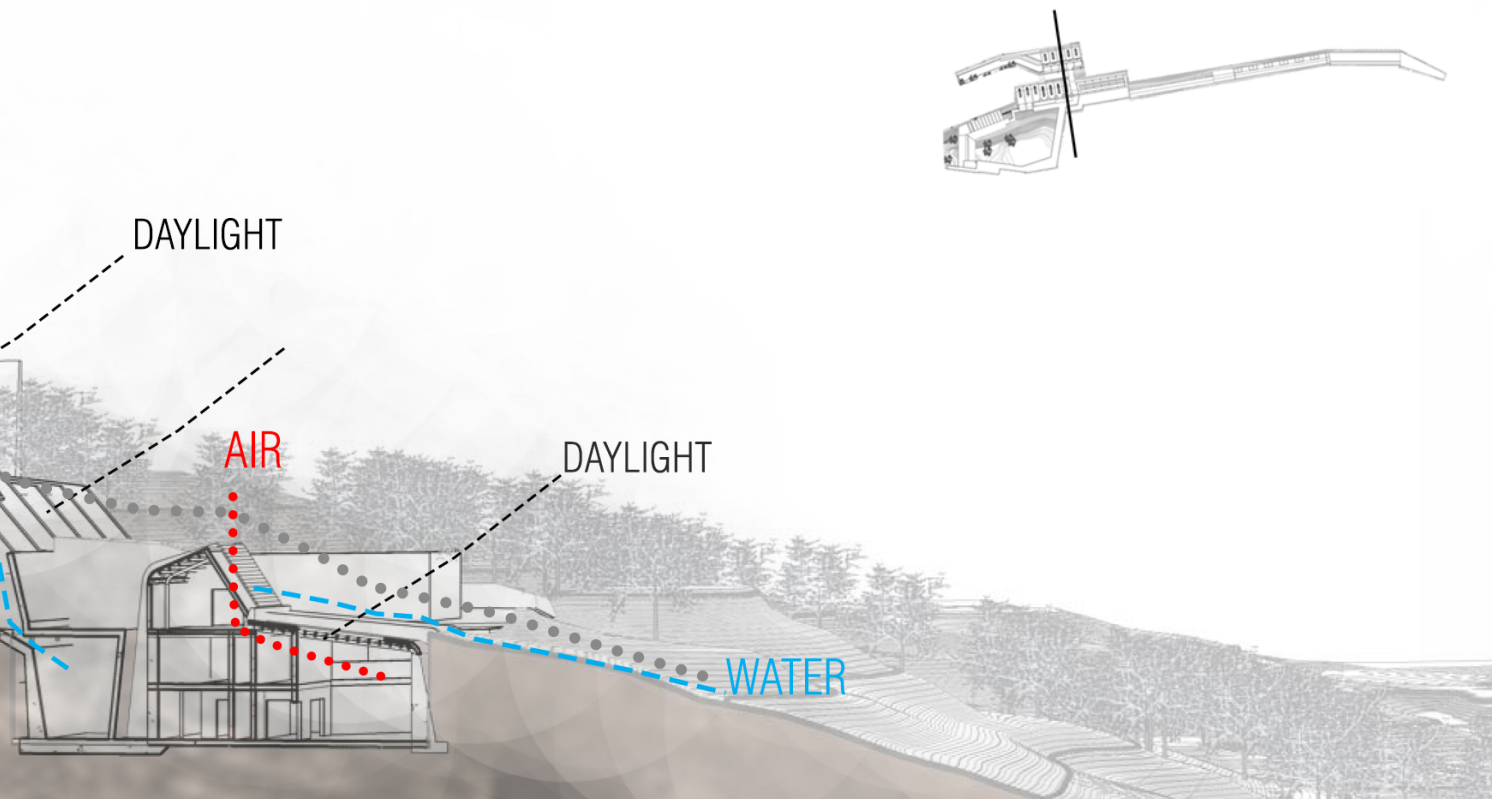






Figure 202: 3-dimensional section of the Workshops and Archive, illustrating how passive strategies were considered. (2016)

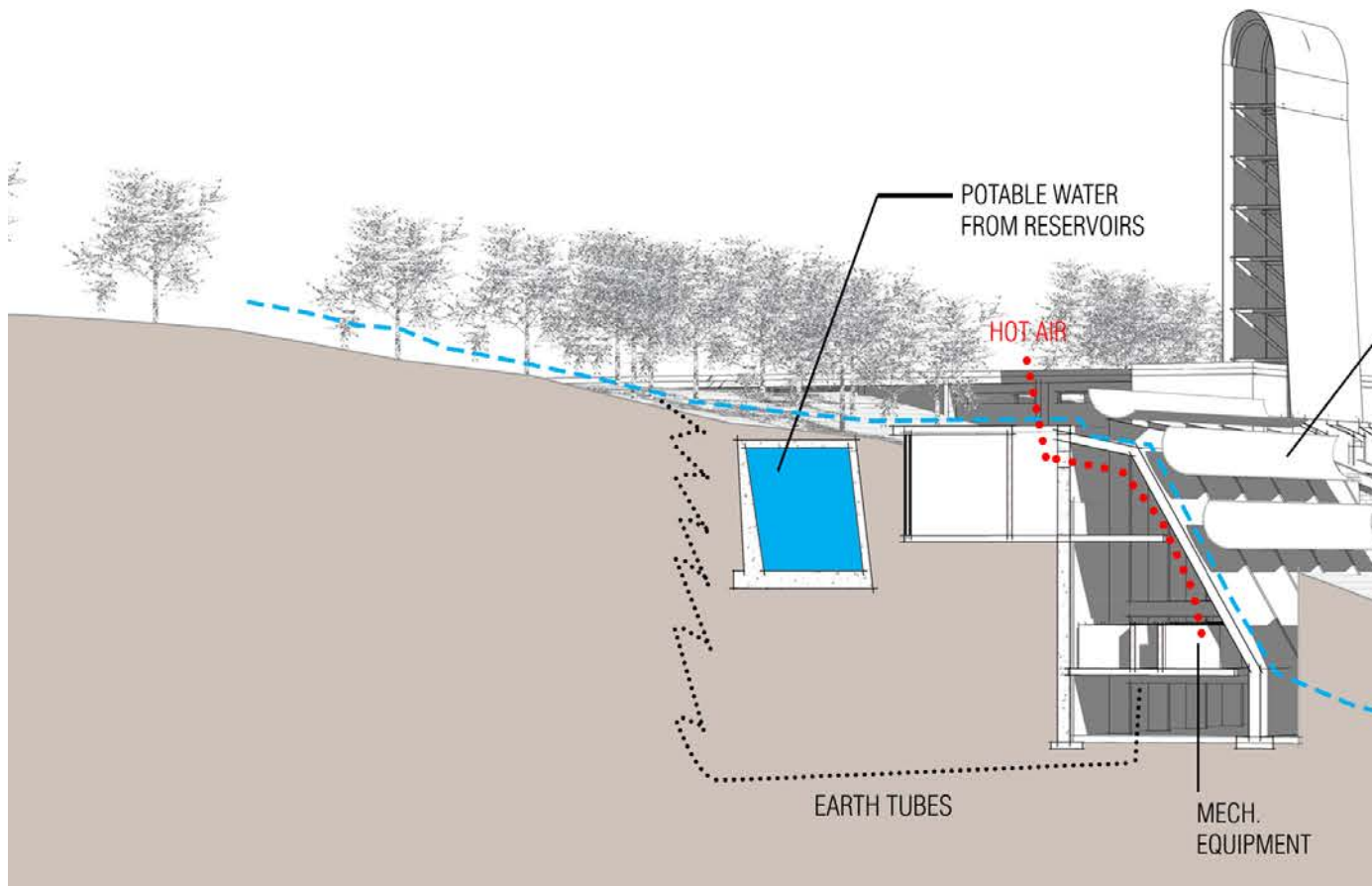
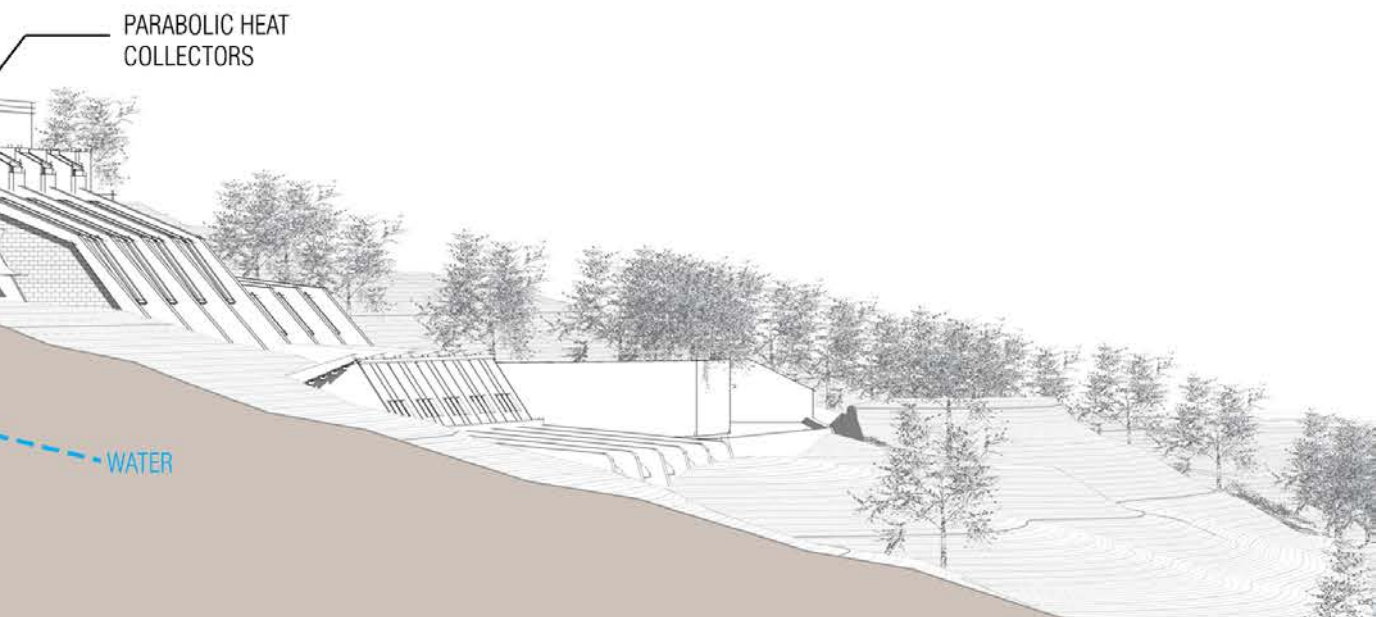
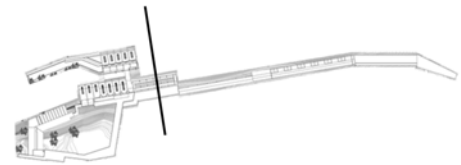
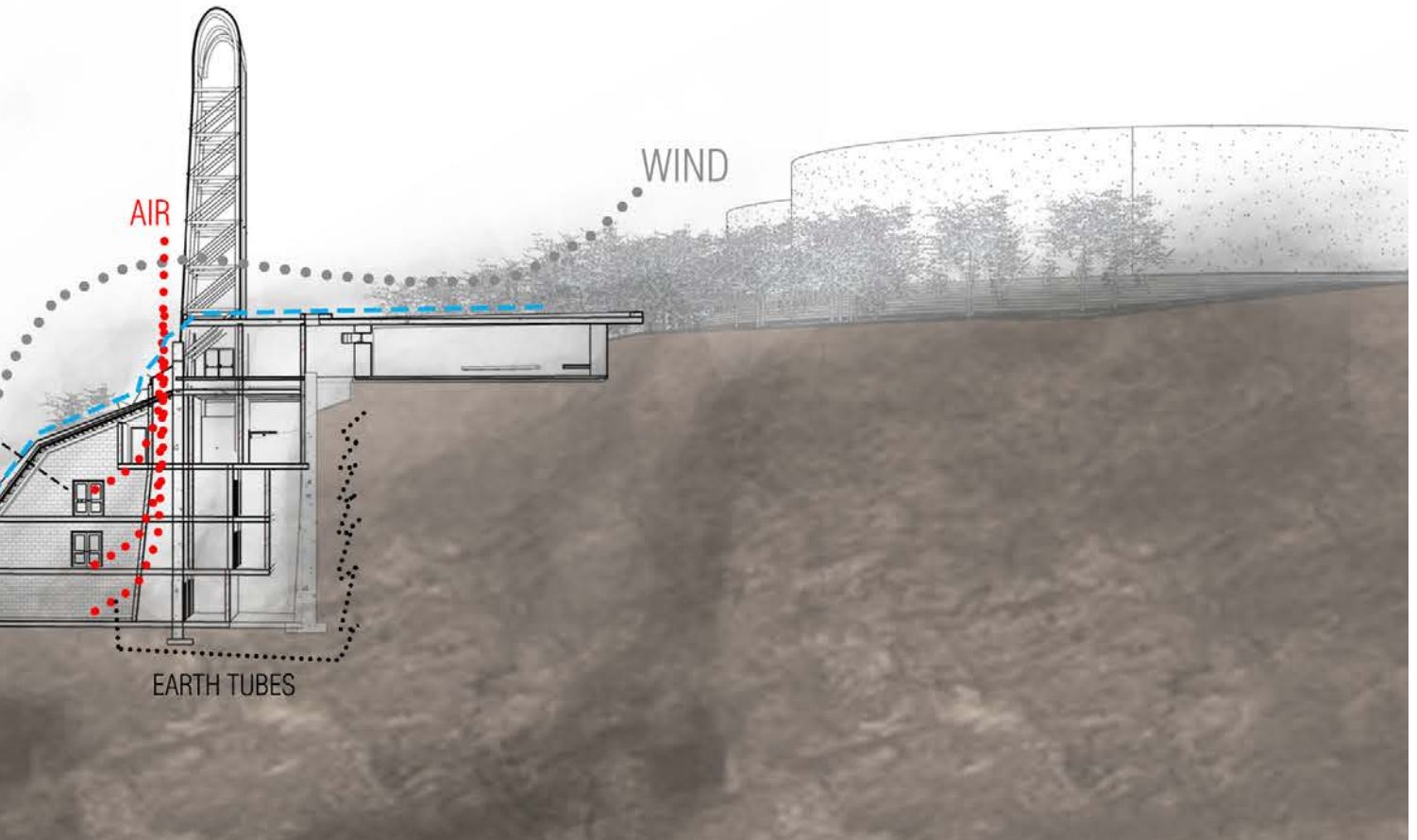


Figure 203: 3-dimensional section of the Energy Chamber, illustrating how passive strategies were considered. (2016)





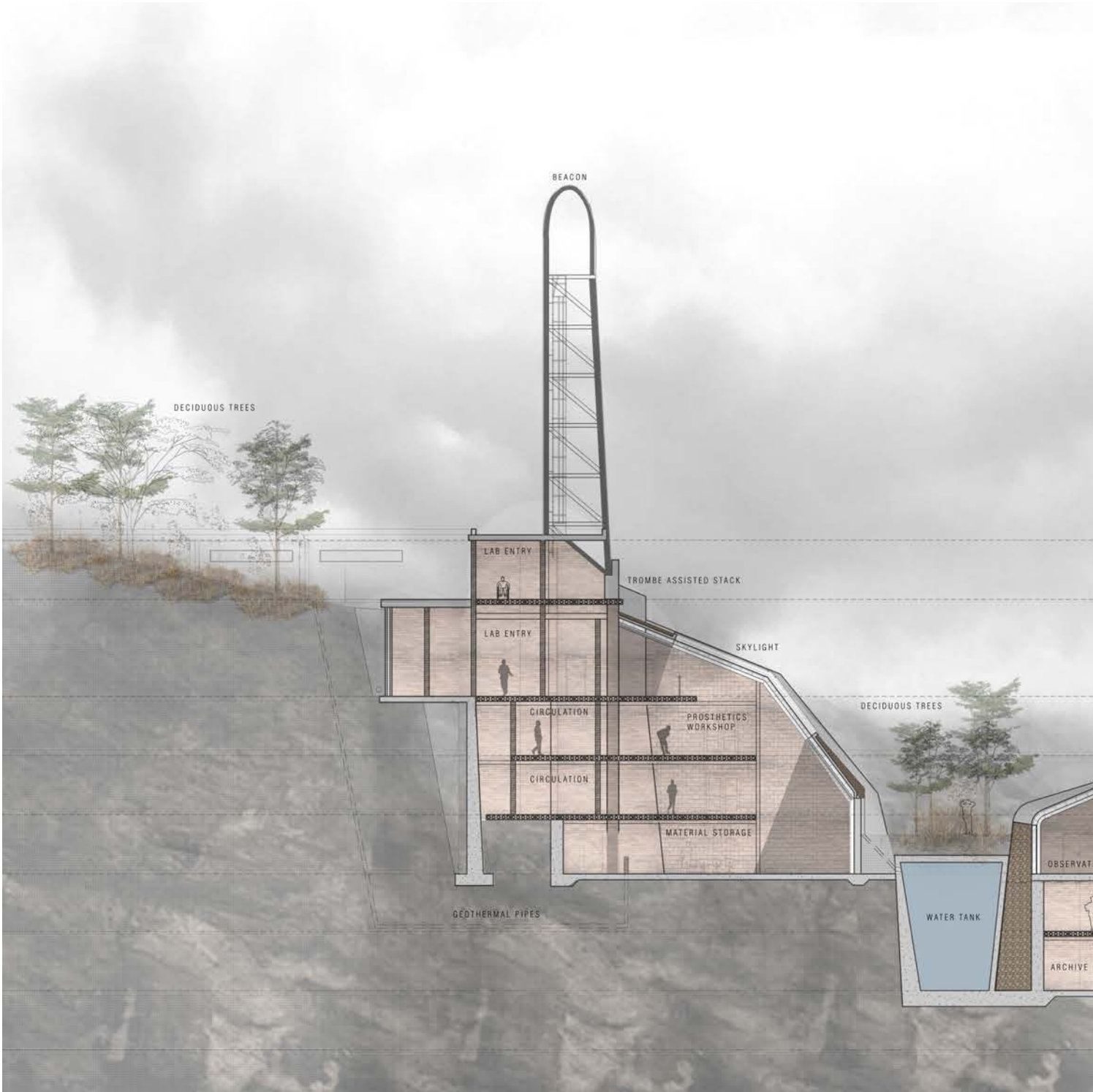
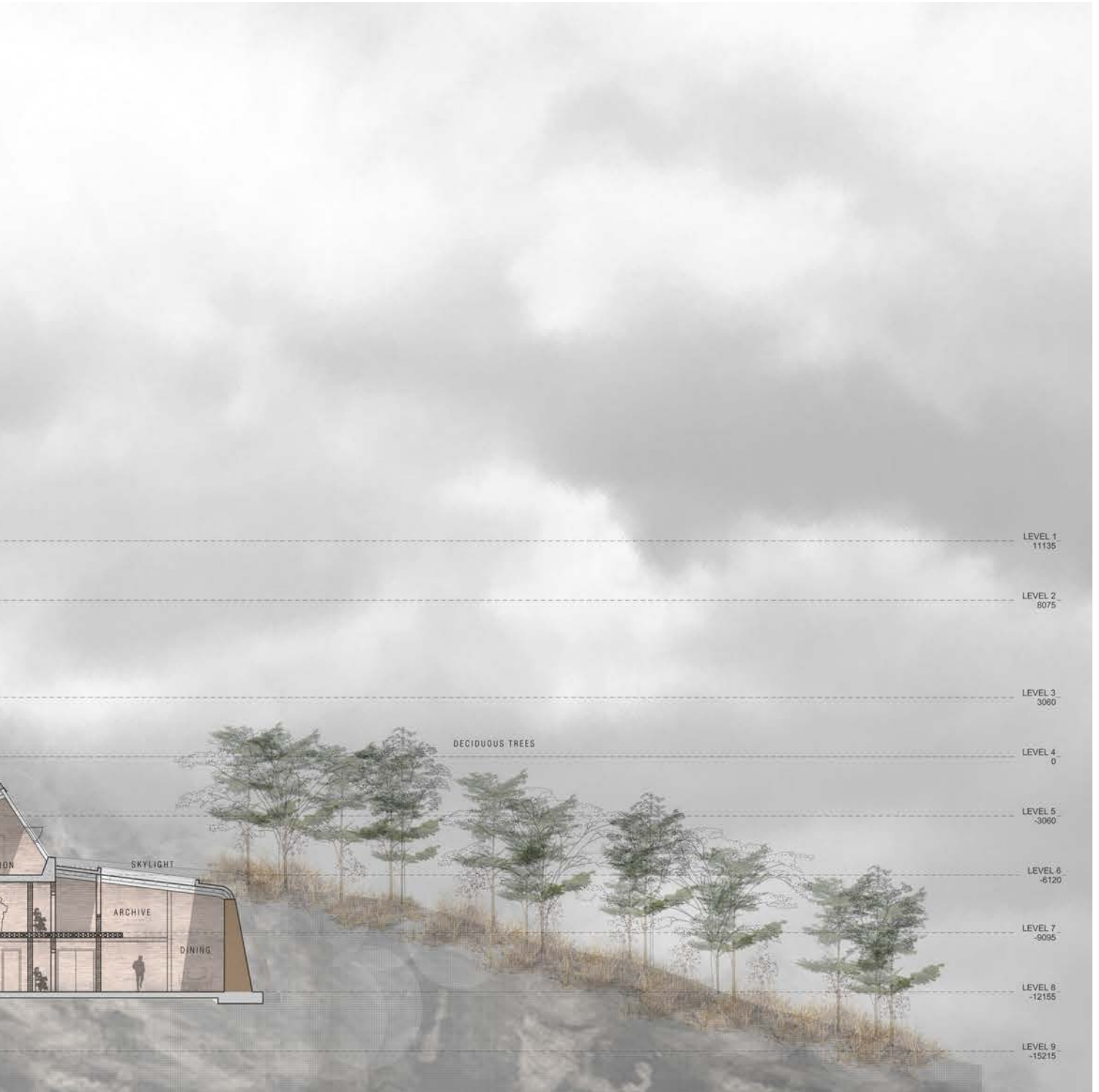
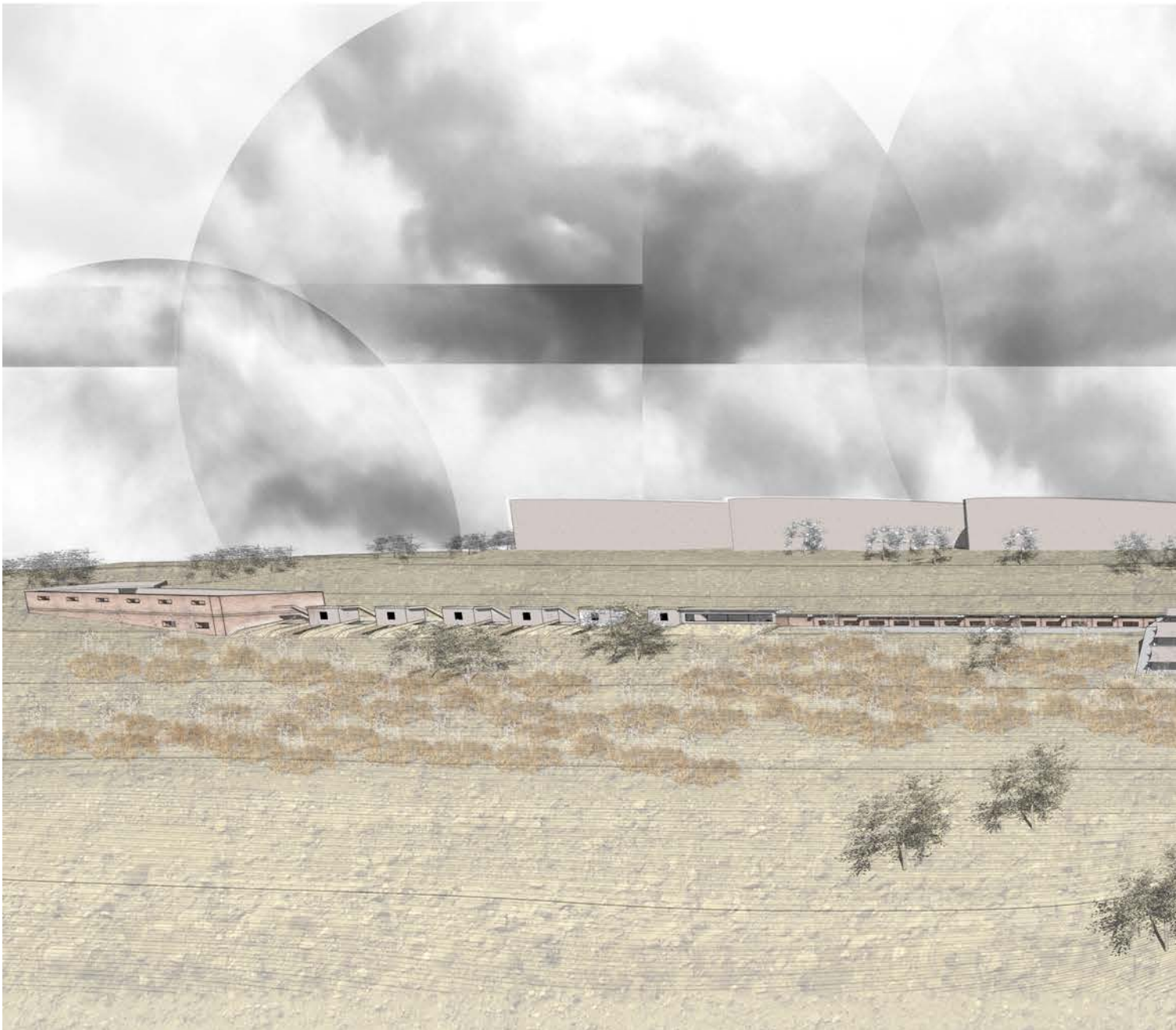


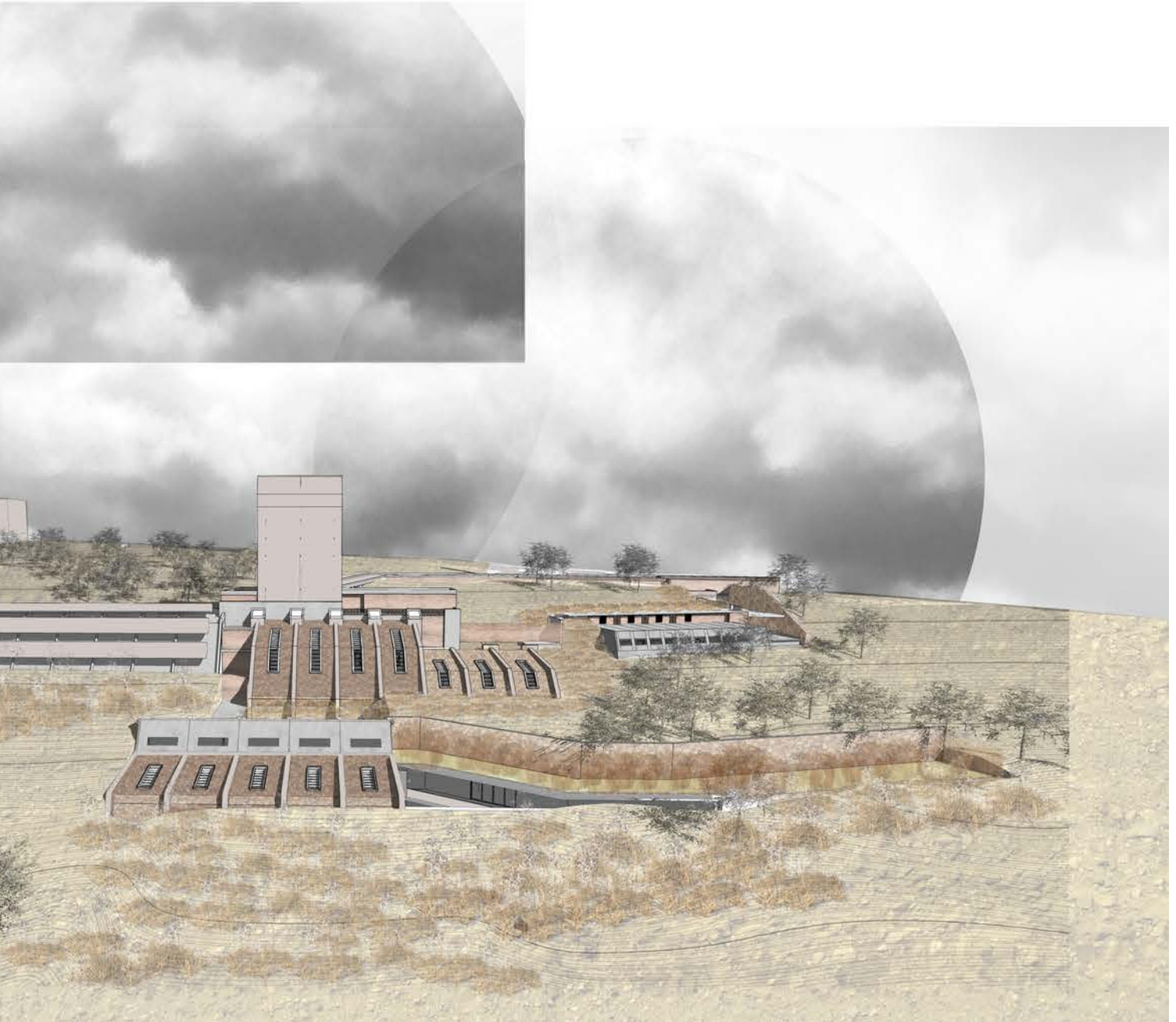
Figure 204: Main technical section. (2016)



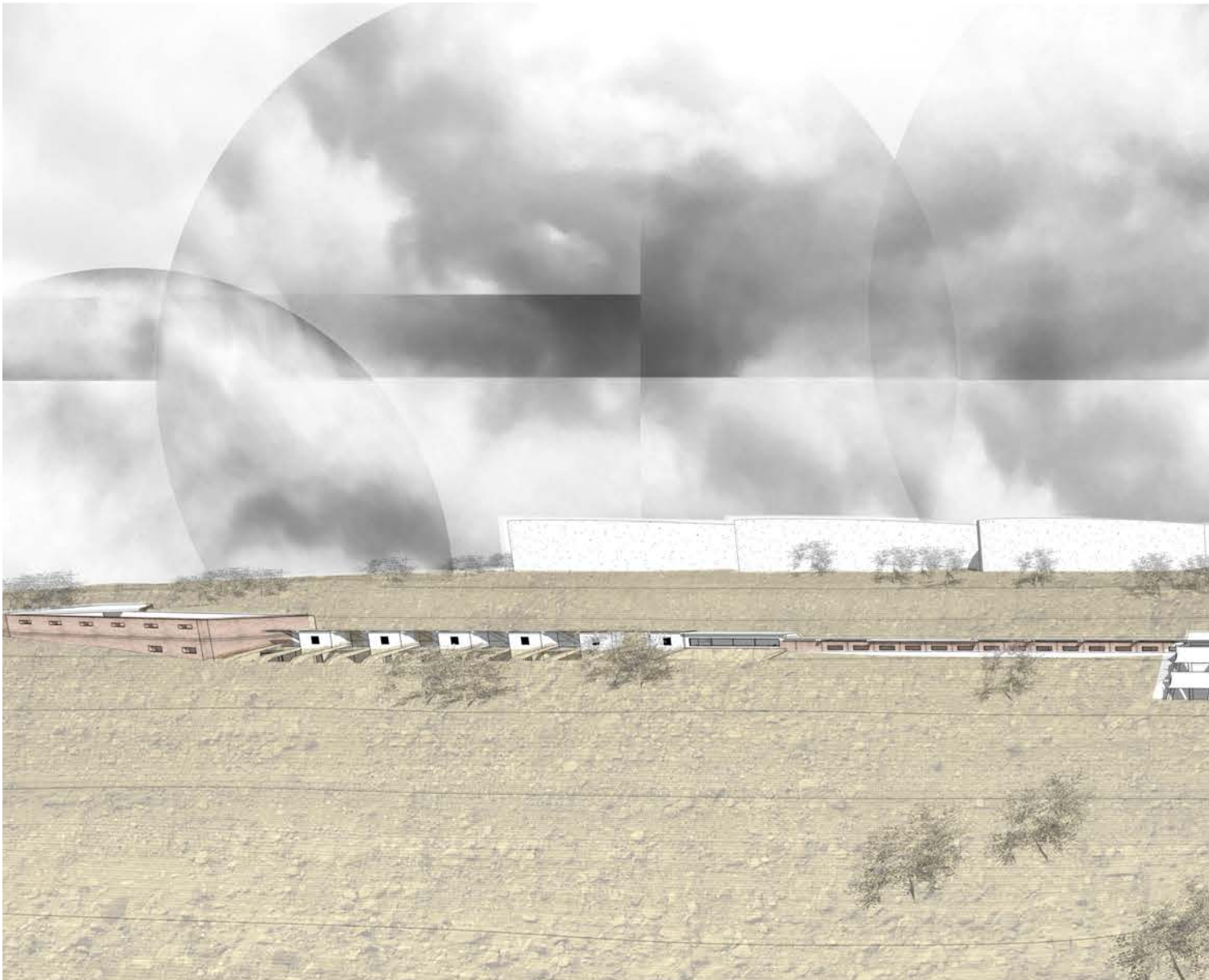




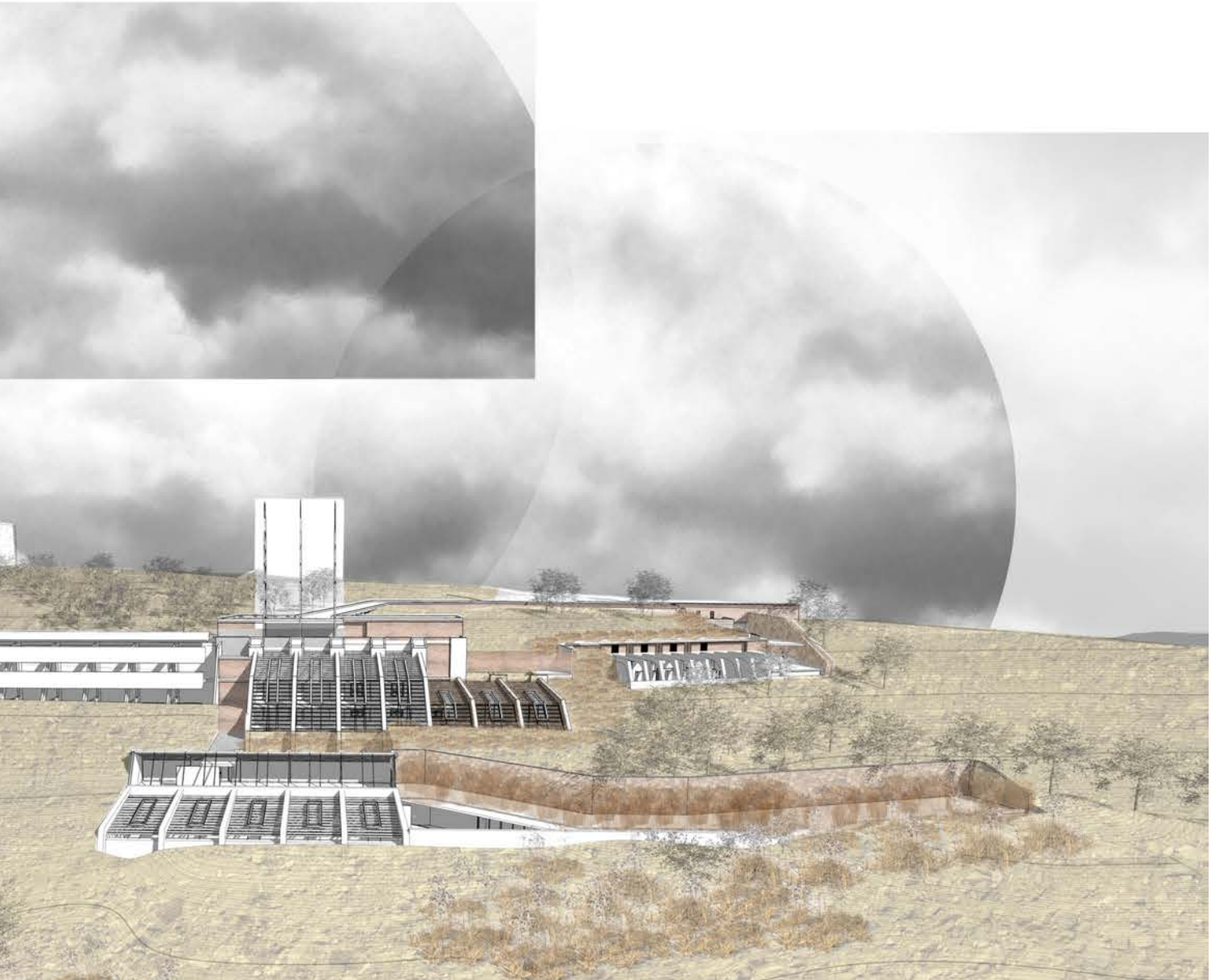
*Figure 205: 3-dimensional illustration of the first scenario: a protected and self-sustained community. (2016)*







*Figure 206: 3-dimensional illustration of the second scenario: a monument falling to ruin. (2016)*







*Figure 207: 3-dimensional illustration of an architecture of refuge in its entirety. (2016)*







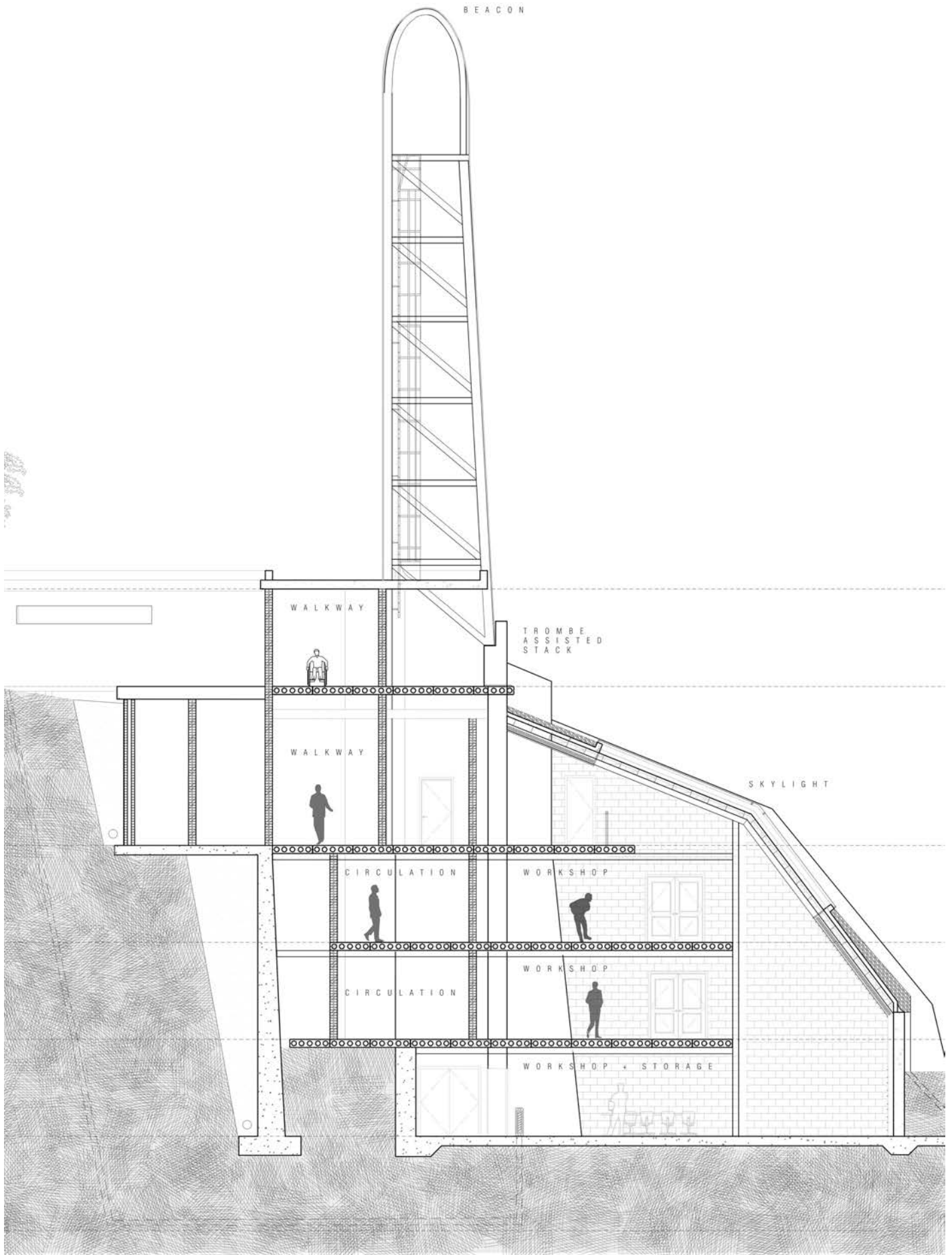


Figure 208: Technical section of Workshops. (2016)

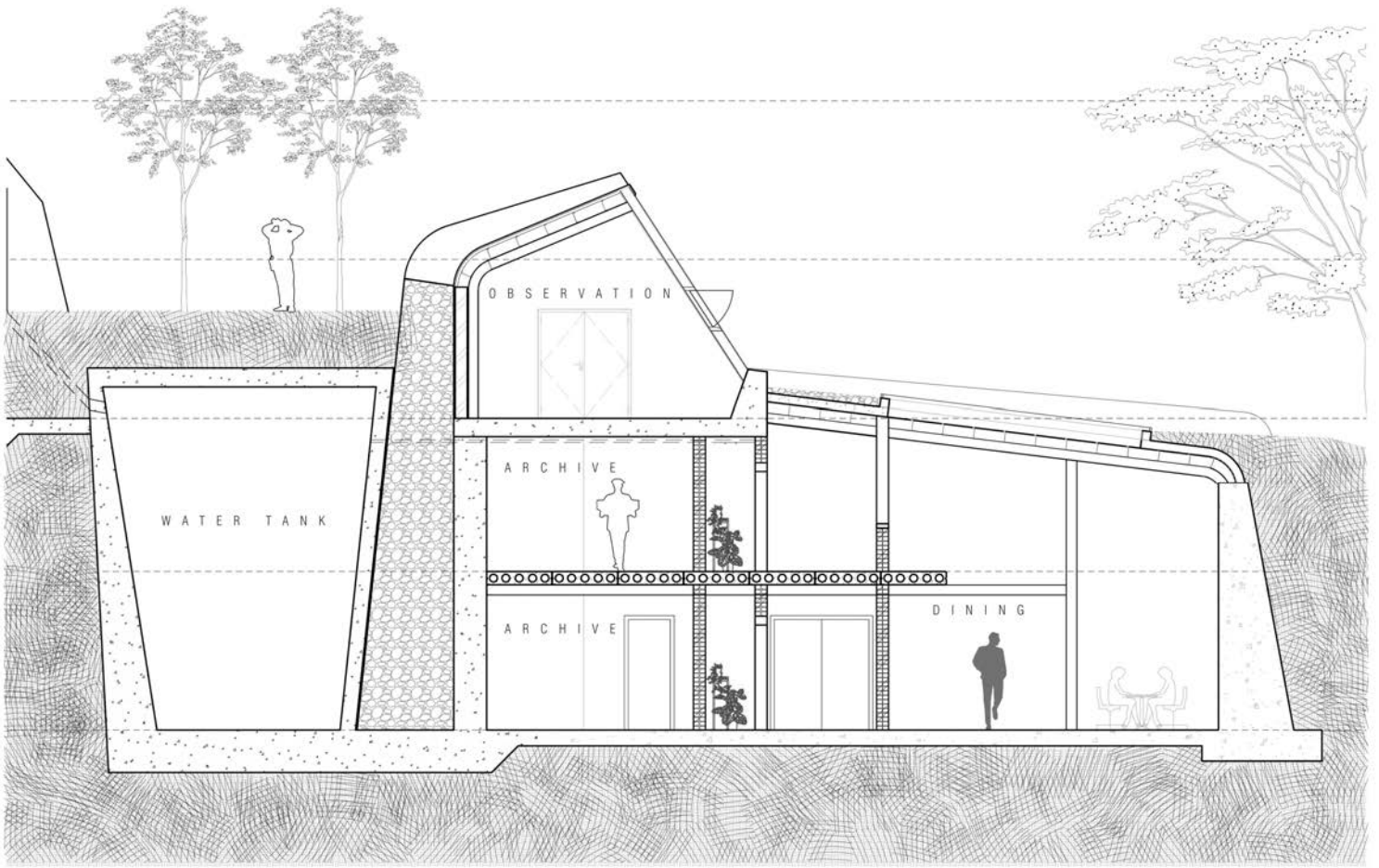
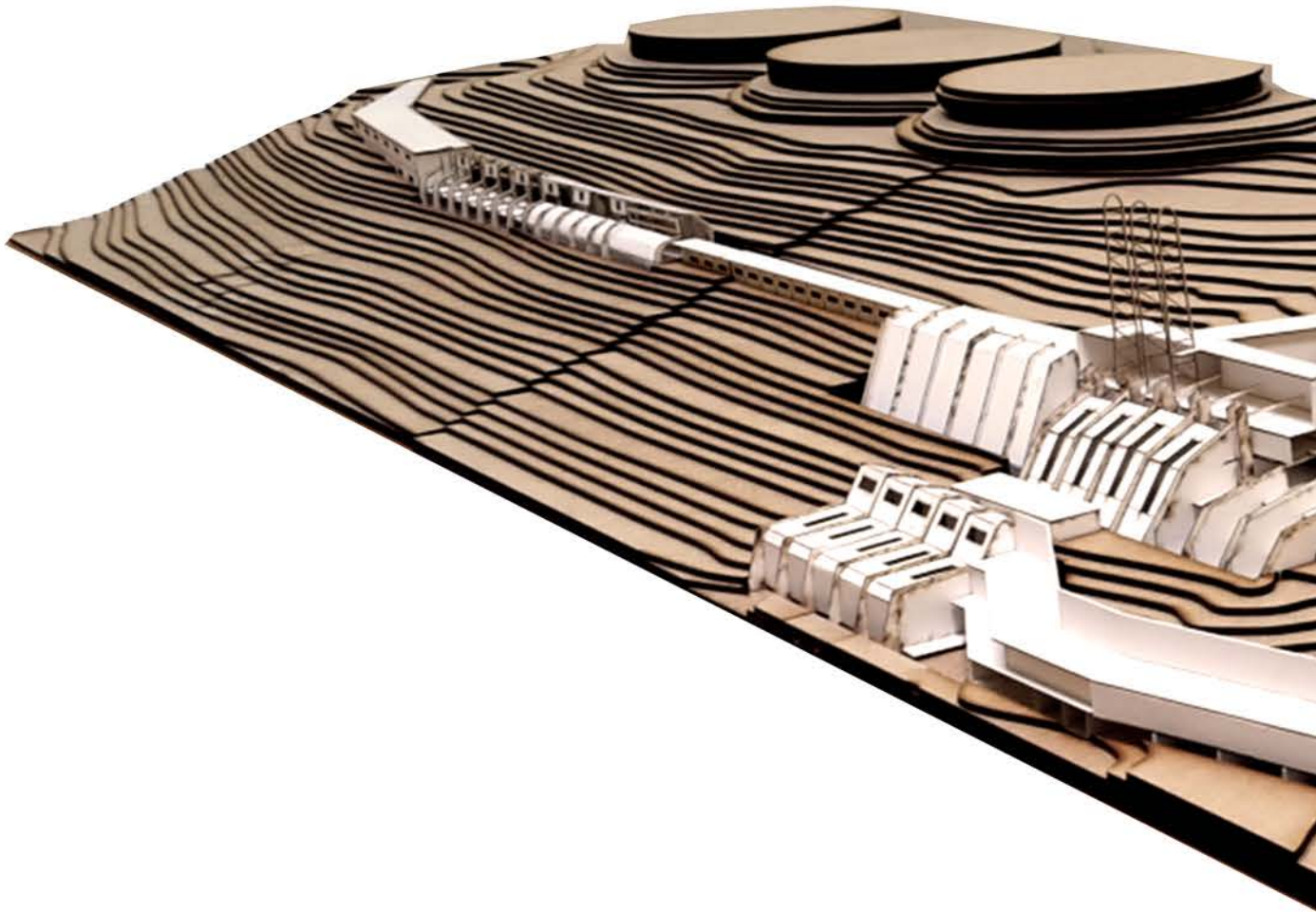


Figure 209: Technical section of Archive. (2016)





*Figure 210: Photograph of final model. (2016)*



*Figure 211: Photograph of final model. (2016)*



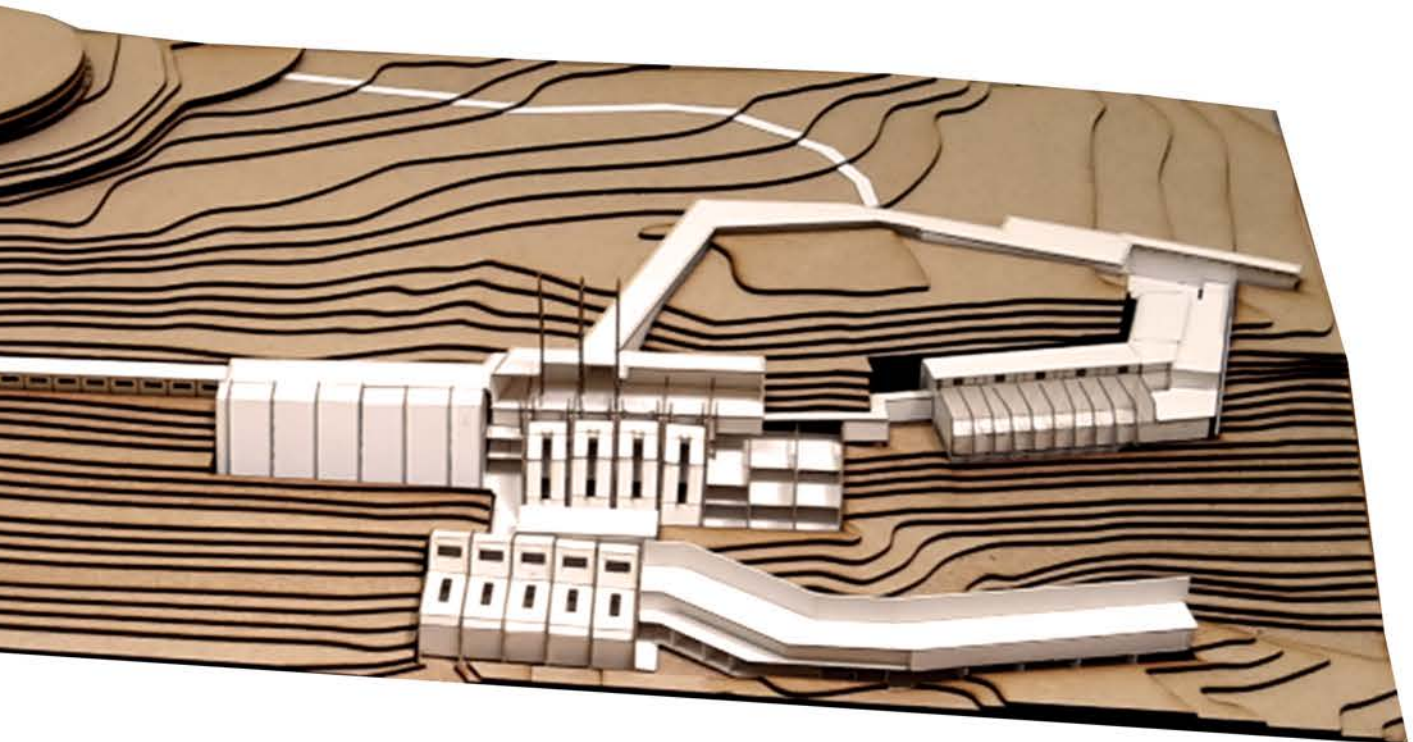
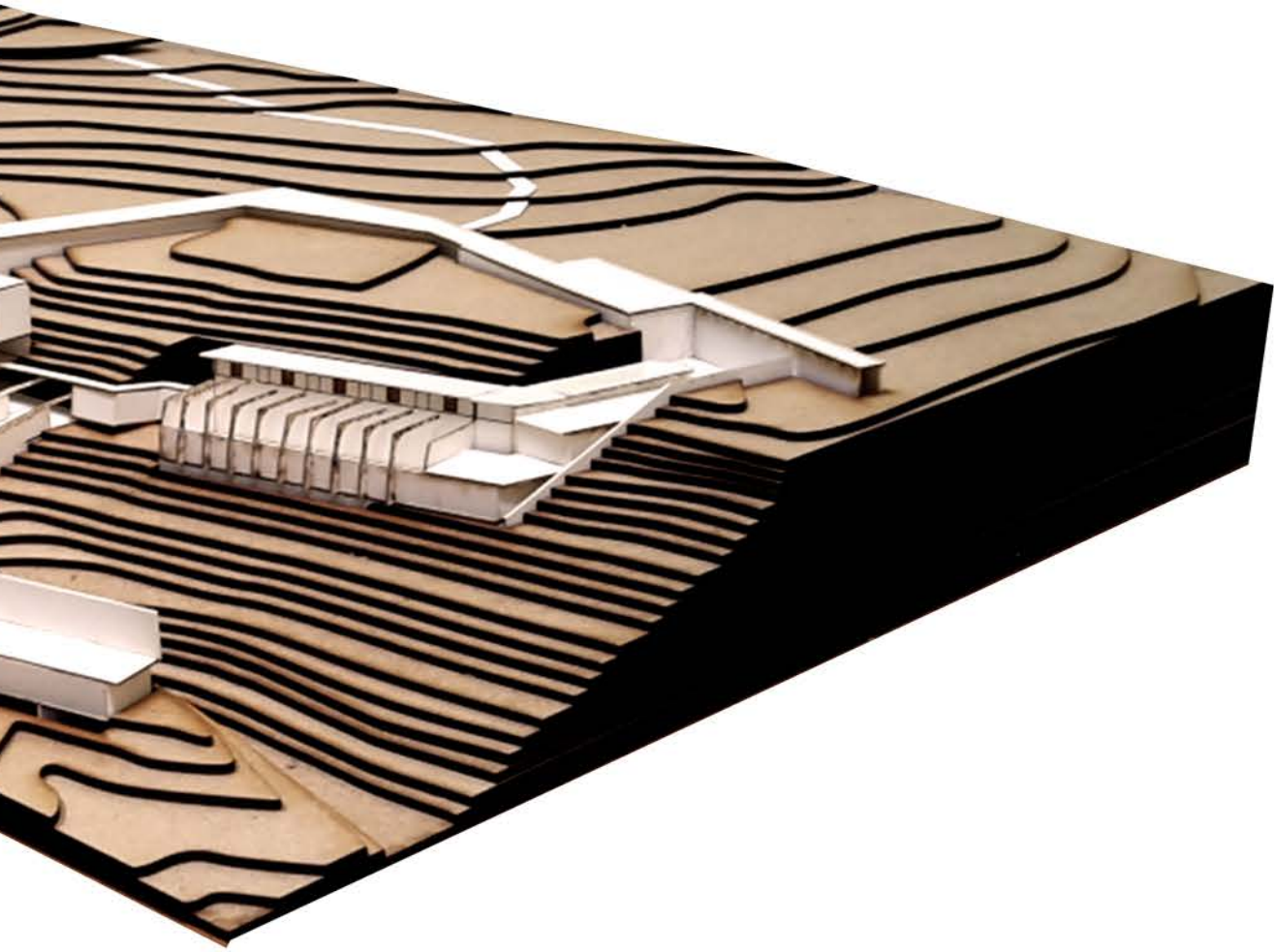






Figure 212: Interior rendering of the Laboratory. (2016)

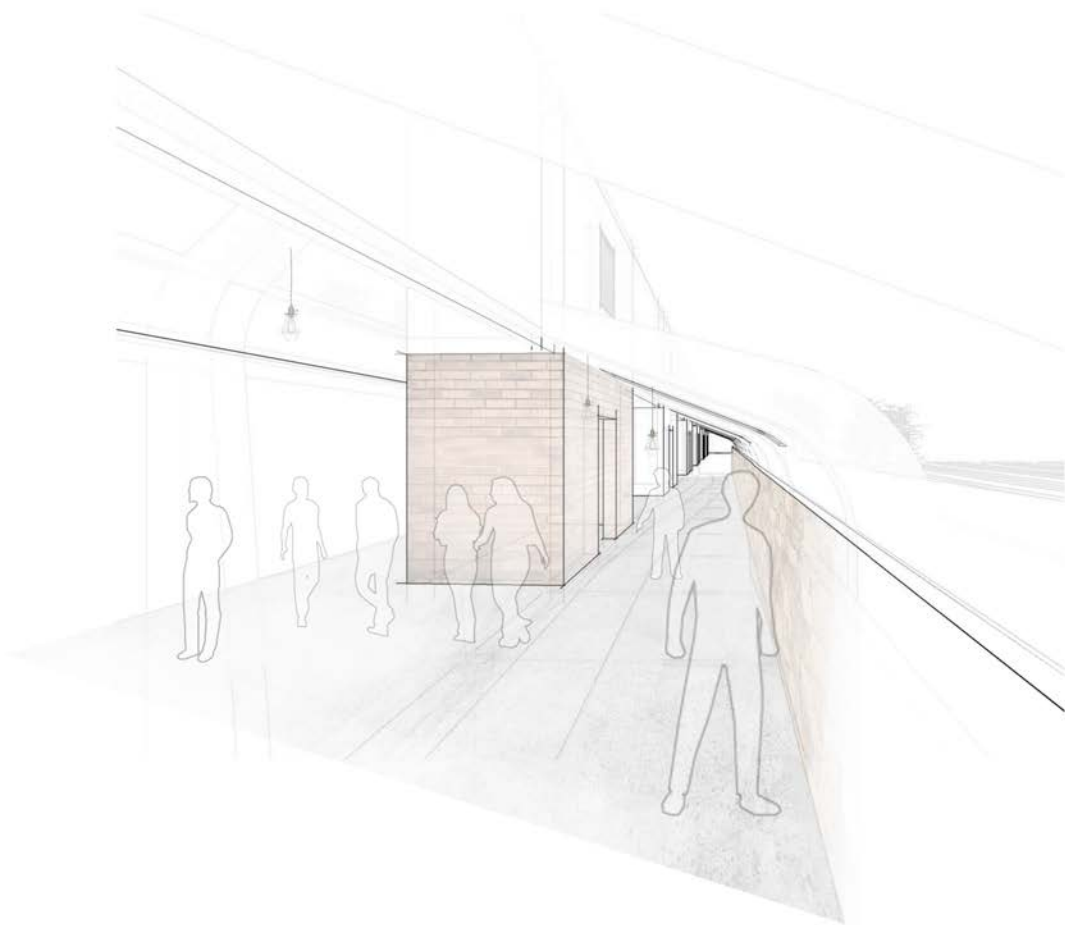


Figure 213: Interior rendering of the Observation deck. (2016)



Figure 214: Interior rendering of the walkway between the Core and the Observation deck. (2016)



Figure 215: Interior rendering of the Archive dining area. (2016)



# BIBLIOGRAPHY

- Ahrens, D. Ellison, T. Sterling, R. 1981. *Earth Sheltered homes: Plans and designs*. New York: Van Nostrand Reinhold Company.
- Appleton, J. 1993. *The Experience of Landscape*. Wiley and sons: USA.
- Arendt, H. 1998. *The Human Condition*. Chicago: The University of Chicago Press.
- Bathory, D. S. 1993. *Psychological, Neurobiological and Developmental Consequences of Trauma in Children*. In D. S. Bathory. Honolulu, Hawaii: Unpublished Doctoral Dissertation.
- Bathory, D. S. 1993. *Applied Psychological Trauma Theory and its Reflection in Architecture: Wounds and Memorials*. USA: Bathory International LLC.
- Bentham, J. *The Works of Jeremy Bentham, published under the Superintendence of his Executor, John Bowring* (Edinburgh: William Tait, 1838-1843). 11 vols. Vol. 4. [O]. Available: <http://oll.libertyfund.org/titles/1925>. Accessed 25 April 2016.
- Carmody, J. 1985. *Earth Sheltered Housing Design: Guidelines, Examples, and References*. New York: Van Nostrand Reinhold Company.
- Ching, F, D, K. 2007. *Architecture: Form, Space and Order*. New Jersey: John Wiley and Sons.
- Crysler, C, G. Cairns, S. Heynen, H. 2012. *The SAGE Handbook of Architectural Theory*. California: SAGE Publications.
- Demissie, F. 2012. *Colonial Architecture and urbanism in Africa: Intertwined and contested histories*. England: Ashgate Publishing.
- Descartes, R. 1641. *First Meditation, in Meditations on First Philosophy*. Reprinted in *The Philosophical Writings of Descartes*, eds. J. Cottingham, R. Stoothoff & D. Murdoch, Cambridge University Press, Cambridge, 1983.
- Foucault, M. 1967. *Of Other Spaces: Utopias and Heterotopias*. [O]. Available at: <http://foucault.info/documents/heteroTopia/foucault.heteroTopia.en.html>. Accessed 20 February 2016. (Note: This text, entitled "Des Espace Autres," and published by the French Journal *Architecture/ Mouvement/ Continuité* in October, 1984, was the basis of a lecture given by Michel Foucault in March 1967. Translated from the French by Jay Miskowiec).
- Frampton, K. 1987. *Ten Points on an Architecture of Regionalism: A Provisional Polemic*. USA: University of Texas.
- Griffin, E. 2003. *A First look at Communication Theory: 5th edition*. McGraw-Hill: New York.
- Khoury, P, S. Khalaf, S. 1949. *Recovering Beirut: urban design and post-war reconstruction*. BRILL: New York.
- Maudlin, T. (1988). *The Essence of Space-Time. PSA: Proceedings of the Biennial Meeting of the Philosophy of Science Association*, 1988, 82-91. [O]. Available: <http://www.jstor.org/uplib.idm.oclc.org/stable/192873>
- O'Brien, D. 2003. *The Epistemology of perception*. [O] Available: <http://www.iep.utm.edu/epis-per/>. Accessed 26 February 2016. USA: The University of Birmingham, IGU (International Geographical Union)
- Pallasmaa, J. 2005. *The Eyes of the Skin: Architecture and the Senses*. West Sussex: John Wiley & Sons.
- Panagos, D.C. (2004): *The mystery of the ZAR forts of Pretoria*. *Military History Journal*, Volume 13, No. 1.
- Papadakis, A. 1993. *Theory and Experimentation*. London: Academy Editions.
- Proussin, L. 1992. *African nomadic architecture: Space, place and gender*. Washington: Smithsonian Institution Press.
- Sommers, L, M. Mehretu, A. Pigozzi, B, W, M. 1999. *Towards typologies of socio-economic marginality: North/South Comparisons*. In: Jussila, H., Majoral, R. and Mutambirwa, C. C. (eds.) *Marginality in Space – Past, Present and Future: Theoretical and methodological aspects of cultural, social and economic parameters of marginal and critical regions*. Ashgate Publishing Ltd: England. (p. 7-24)



# BIBLIOGRAPHY

Seisun, C. 2004. Space, Power, Foucault. [O]. Available:  
<http://architectureinsights.com.au/resources/space-power-foucault/>. Accessed 16 March 2016.

Sherman, W, H. 1987. The Marginal City. Proceedings of the ACSA National Conference.

Tshitanye, O, C. Khotlele, K. Z. Matebane, K, J. Tshifaro, T, J. Mnguni, S, V. 2011. City of Tshwane Disaster Management Plan.

Van Vollenhoven, Anton C. (1998): The Military Fortifications of Pretoria 1880 - 1902. Pretoria: Technikon Pretoria.

## Websites:

Soleri, P. [Sa]. [O]. Available:  
<https://arcosanti.org/Arcology>  
Accessed 8 September 2016.

City Press. 2016. [O]. Available:  
<http://yourneighbourhood.co.za/impact-of-water-shortage-in-south-africa/>  
Accessed 22 September 2016.



- Figure 1: Parti diagram of the layers of the architectural intentions. Author (2016)
- Figure 2: Abstract condition of author's perception of Pretoria. Author (2016)
- Figure 3: Relationship between marginal and society. Author (2016)
- Figure 4: The location of the project in the context of a disaster in the CBD of Pretoria. The possible positions of similar pilot projects are also indicated. Author (2016)
- Figure 5: Mindmap of proposal process. Author (2016)
- Figure 6: Societal and Spatial marginality form a close relationship in the investigation into marginality in the city. The shaded area in both figures represent the integration of the relationship from all directions of life. Author (2016)
- Figure 7: An evolution of the marginal community from left to right. Author (2016)
- Figure 8: The image aims to illustrate the factors that affect marginality. Author (2016)
- Figure 9: Representations of margins, marginal and marginalised. Author (2016)
- Figure 10: The figure above represents the relationship between the issues of perception and the rest of the structure of the study. Author (2016)
- Figure 11: An illustration of the timeline of the project in relation to a broader scheme. Author (2016)
- Figure 12: An illustration of a marginalised position. [sa]
- Figure 13: Image of the location of the proposed site in relation to its macro-context. Author (2016)
- Figure 14: Proposed site in relation to meso site. Author (2016)
- Figure 15: Photographs taken at different locations on the ridge. Author (2016)
- Figure 16: Photographs taken at different locations on the ridge. Author (2016)
- Figure 17&18: Panoramic photographs taken from the top of the ridge. Author (2016)
- Figure 19: Diagram illustrating the synthesis of the problem statement. Author (2016)
- Figure 20: Abstract image of the fragments of the mind and body. Author (2016)
- Figure 21: Different ideas are illustrated here that pertain to the architectural devices used during the investigation. Author (2016)
- Figure 23: Mindmap of investigation process. Author (2016)
- Figure 24: Point of disaster on a timeline. Author (2016)
- Figure 25: Process diagram illustrating the development and method of the study. Author (2016)
- Figure 26: Conceptual sketch of taking refuge underground. Author (2016)
- Figure 27: Initial explorations to illustrate refuge in different forms. Author (2016)
- Figure 28: Development in the Pretoria valley up to the end of the nineteenth century with the emphasis on the surrounding ridges. (De Klerk)
- Figure 29: The evolution of city planning in Pretoria from 1850 to 1879. (De Klerk 2015)
- Figure 30: The evolution of city planning in Pretoria from 1890 to 1960. (De Klerk 2015)
- Figure 31: A Timeline representing various marginalised groups part of forced removals caused by city planning. Author (2016)
- Figure 32: Evolution of Pretoria in terms of marginal space. Author (2016)
- Figure 33: The image illustrated here coincides with the timeline presented previously and aims to represent the movement of marginalised communities to alternative locations. Author (2016)
- Figure 34: Mapping of existing establishments for marginal people in the vicinity of the CBD of Pretoria. Author (2016)
- Figure 35: 1948; The evolution of Pretoria's city planning and development with reasons for the conditions. Author (2016)
- Figure 36: 1964 - The continued evolution of margins around the city centre. Author (2016)
- Figure 37: 1976 - The expansion of margins to the west and south-west of the city. Author (2016)
- Figure 38: 1991 - The establishment of an industrial island to the south-west of the city as well as the link between the fortification sites that represent an intangible defensive margin. Author (2016)
- Figure 39: An amalgamation and shifting of margins in Pretoria. Author (2016)
- Figure 40: Synthesis of marginal interpretations. Author (2016)
- Figure 41: Pretoria in a dream. Author (2016)
- Figure 42: Fragments highlighted in the city of Pretoria. Author (2016)
- Figure 43: Fragments highlighted in the city of Pretoria. Author (2016)
- Figure 44: The process of perception from illusion to extraction. Author (2016)
- Figure 45: Abstracted images of marginal spaces in Pretoria. Author (2016)
- Figure 46: Viewing the city, in a sectional plane, margins are proposed between ground level, above and below this level. Author (2016)
- Figure 47: Interpretations of the three marginal spheres and what is seen and unseen. Author (2016)
- Figure 48: The vision of the city of Pretoria in a state of dreaming. Author (2016)
- Figure 49: An illustration of recent incidents of destruction in the city of Pretoria and other locations in South Africa. Author (2016)
- Figure 50: Photographs by Robin Hammond capturing severe conditions of mental health victims, in African countries in crisis. [O]. Available: <http://www.robinhammond.co.uk/condemned-mental-health-in-african-countries-in-crisis/>. Accessed 10 March 2016.
- Figure 51: Suggested disaster cycle and how the Mavericks project evolves according to the different stages of the cycle. Author (2016).
- Figure 52: Disaster Risk Management Planning Framework for the Cot with alterations by the author to include the Mavericks project. Author (2016)
- Figure 53: Relationships between crisis and marginality. Author (2016)
- Figure 54: Illustrations of the spatial formations of refugee camps around the world. Author (2016)
- Figure 55: Illustrations of the spatial formations of refugee camps around the world. Author (2016)
- Figure 56: Drawings of spatial principles derived from the layouts of refugee camps around the world. Author (2016)
- Figure 57: Marginal characters depicted as unseen observers. Author (2016)
- Figure 58: Current marginal state of character 1. Author (2016)
- Figure 59: Proposed condition of character 1. Author (2016)
- Figure 60: Current marginal state of character 2. Author (2016)
- Figure 61: Proposed condition of character 2. Author (2016)
- Figure 62: Current marginal state of character 3. Author (2016)



- Figure 63: Proposed condition of character 3. Author (2016)
- Figure 64: Current marginal state of character 4. Author (2016)
- Figure 65: Proposed condition of character 4. Author (2016)
- Figure 66: Current marginal state of character 5. Author (2016)
- Figure 67: Proposed condition of character 5. Author (2016)
- Figure 68: Illustration of the evolution of perception from the vision through to the justification and belief of perception based on the theoretical discourse. Author (2016)
- Figure 69: A drawing that represents spatial practice. Author (2016)
- Figure 70: A drawing of representations of space. Author (2016)
- Figure 71: A drawing of representational space. Author (2016)
- Figure 72: Forced integration versus facilitated and mediated integration. Author (2016)
- Figure 73: An image representing unity in difference and the relationships created through different activities. Author (2016)
- Figure 74: Different skillsets based on different identities. Author (2016)
- Figure 75: Segregated identities versus a collective identity. Author (2016)
- Figure 76: Interpretation of the panopticon. Author (2016)
- Figure 77: Interpretation of an archive. Author (2016)
- Figure 78: Interpretation of observation. Author (2016)
- Figure 79: Interpretation of a laboratory. Author (2016)
- Figure 80: Interpretation of a beacon and energy chamber. Author (2016)
- Figure 81: Interpretation of functions in a collaborative setting. Author (2016)
- Figure 82: "The Dome" in its Sonoran Desert landscape. [O]. Available: <http://www.archdaily.com/359748/the-dome-in-the-desert-by-wendell-burnette/516ad55ab3fc4bc7f900006b-the-dome-in-the-desert-by-wendell-burnette-photo>. Accessed 27 April 2016.
- Figure 83: Sectional drawings of the interpretation of prospect and refuge in different scenarios. Author (2016)
- Figure 84: Photographs of Coromandel Manor house taken by author. Author (2016)
- Figure 85: Sketch of 'Onion house' by Malcolm Wells. Higginson, C. 2006. [O]. Available: <http://www.motherearthnews.com/green-homes/malcolm-wells-earth-sheltered-architecture-zmaz06onzraw>. Accessed 23 September 2016.
- Figure 86: Malcolm Wells's philosophy. Higginson, C. 2006. [O]. Available: <http://www.motherearthnews.com/green-homes/malcolm-wells-earth-sheltered-architecture-zmaz06onzraw>. Accessed 23 September 2016.
- Figure 87: Sketch by Malcolm Wells. Higginson, C. 2006. [O]. Available: <http://www.motherearthnews.com/green-homes/malcolm-wells-earth-sheltered-architecture-zmaz06onzraw>. Accessed 23 September 2016.
- Figure 88: Site layout of Freedom Park. Mashabane Rose Architects. [O]. Available: <http://mashabanerose.co.za/freedom-park>. Accessed 23 September 2016.
- Figure 89: Photographs of Freedom Park. Mashabane Rose Architects. [O]. Available: <http://mashabanerose.co.za/freedom-park>. Accessed 23 September 2016.
- Figure 90: Movement through the Dogon housing clusters. Ching, F, D, K. 2007. Architecture: Form, Space and Order. New Jersey: John Wiley and Sons.
- Figure 91: Datum represented in the Durbar Square. Ching, F, D, K. 2007. Architecture: Form, Space and Order. New Jersey: John Wiley and Sons.
- Figure 92: Radial formation of the museum, connecting spaces together. Ching, F, D, K. 2007. Architecture: Form, Space and Order. New Jersey: John Wiley and Sons.
- Figure 93: An enclosing of space through passages in the plan of Safavid, Persia. Ching, F, D, K. 2007. Architecture: Form, Space and Order. New Jersey: John Wiley and Sons.
- Figure 94: Amalgamation of principles considered in the design development. Ching, F, D, K. 2007. Architecture: Form, Space and Order. New Jersey: John Wiley and Sons.
- Figure 95: Fortification plan of Pretoria. Van Vollenhoven, Anton C. (1998): The Military Fortifications of Pretoria 1880 - 1902. Pretoria: Technikon Pretoria
- Figure 96: Plan layouts of all the forts of Pretoria. Panagos, D.C. (2004): The mystery of the ZAR forts of Pretoria. Military History Journal, Volume 13, No. 1.
- Figure 97: The relevance of observation without being seen, in a fort. Author (2016)
- Figure 98: Contribution of the dissertation. Author (2016)
- Figure 99: Google Earth image of proposed site. (Google Earth 2016)
- Figure 100: Mapping of surrounding areas and intangible links to other ridges in the vicinity. Author (2016)
- Figure 101: Mapping of surrounding areas and zones in the vicinity. Author (2016)
- Figure 102: Allocation of surrounding sites which are used as informants for various elements of the design and structure. Author (2016)
- Figure 103: An image of the MVA bricks site. (Google Earth 2016)
- Figure 104: An image of the Econoslag crushing plant. (Google Earth 2016)
- Figure 105: The aggregate production flow chart. [O]. Available: <http://www.dscrusher.com/special-reports/aggregate/>. Accessed 1 October 2016.
- Figure 106: Barrier kerb and Bevel paver produced by MVA Bricks. [O]. Available: <http://mvabricks.co.za/>. Accessed 2 October 2016.
- Figure 107: An illustration of the ridge slope in relation to surrounding margins. Author (2016)
- Figure 108: An illustration of the ridge slope in relation to surrounding margins. Author (2016)
- Figure 109: An illustration of the ridge slope in relation to surrounding margins. Author (2016)
- Figure 110: The mediation between landscape and building in section. Author (2016)
- Figure 111: The mediation between landscape and building on plan. Author (2016)
- Figure 112: Found natural objects on the site of the ridge. Author (2016)
- Figure 113: Perspective drawing of the amalgamation of underground and above ground. Author (2016)
- Figure 114: A series of abstracted zone diagrams with water, capital, dream and discarded and subjects. Author (2016)
- Figure 115: An initial sectional model with different representations illustrated in each image from left to right. Author (2016)
- Figure 116: An illustration of the phases of development to ground the design concepts in theory. Author (2016)
- Figure 117: Design generators. Author (2016)
- Figure 118: An illustration of the acts of submerging and elevation in a relationship to protect the marginal community from outsiders. (2016)
- Figure 119: An analysis of the northern part of the ridge in section. Author (2016)
- Figure 120: Indentation in the landscape to seek refuge. Author (2016)
- Figure 121: Indentation in the landscape to seek refuge. Author (2016)
- Figure 122: Sectional exploration. Author (2016)
- Figure 123: Sectional exploration. Author (2016)
- Figure 124: Initial sketches as part of an exploration of form-making. Author (2016)
- Figure 125: Conceptual section. Author (2016)
- Figure 126: Types of earth shelter design. Author (2016)



- Figure 127: Cappadocia, Turkey. Monks Valley. [O]. Available: <http://www.alaturkaturkey.com/index.php?view=north-cappadocia-tour>. Accessed 3 March 2016.
- Figure 128: Underground living. Ahrens, D. Ellison, T. Sterling, R. 1981. Earth Sheltered homes: Plans and designs. New York: Van Nostrand Reinhold Company.
- Figure 129: Various relationships to the surface. Ahrens, D. Ellison, T. Sterling, R. 1981. Earth Sheltered homes: Plans and designs. New York: Van Nostrand Reinhold Company.
- Figure 130: A drawing of the site on plan to illustrate the nature of the ridge in its context. Author (2016)
- Figure 131: Site exploration by means of a model. Author (2016)
- Figure 132: Delineation of lines created by model exploration. Author (2016)
- Figure 133: An diagrammatic drawing to illustrate the concept of a robust core, parts and the inbetween. Author (2016)
- Figure 134: Site vision drawing. Author (2016)
- Figure 135: Model explorations of an integral system. Author (2016)
- Figure 137: Site development. Author (2016)
- Figure 138: Submerging into the topography, model. Author (2016)
- Figure 139: System, site vision and route drawings. Author (2016)
- Figure 140: Design iteration 1 drawings. Author (2016)
- Figure 141: Development of site layout during design iteration two. Author (2016)
- Figure 142: Three dimensional drawing of the potentials of design iteration two. Author (2016)
- Figure 143: Exploration drawings of site layout and form of design iteration two. Author (2016)
- Figure 144: 3-dimensional and sectional explorations of design iteration two. Author (2016)
- Figure 145: Sectional 3D illustrating environmental strategies. Author (2016)
- Figure 146: Sectional 3D illustrating environmental strategies. Author (2016)
- Figure 147: Site layout of design iteration 2. Author (2016)
- Figure 148: Plan layouts of different levels of design iteration 2. Author (2016)
- Figure 149: Three-dimensional illustration of design iteration 2 in context. Author (2016)
- Figure 150: Model of design iteration 2 in context. Author (2016)
- Figure 151: Parti diagram of the final development of the site layout. Author (2016)
- Figure 152: Sectional explorations of final design development. Author (2016)
- Figure 153: Final site layout. Author (2016)
- Figure 154: Level 1 layout. Author (2016)
- Figure 155: Level 2 layout. Author (2016)
- Figure 156: Level 3 layout. Author (2016)
- Figure 157: Level 4 layout. Author (2016)
- Figure 158: Level 5 layout. Author (2016)
- Figure 159: Level 6 layout. Author (2016)
- Figure 160: Level 7 and 8 layout. Author (2016)
- Figure 161: Section A. Author (2016)
- Figure 162: Section B. Author (2016)
- Figure 163: Section C. Author (2016)
- Figure 164: Three-dimensional sections of the final design iteration. Author (2016)
- Figure 165: Three-dimensional representation of the final design resolution in its context. Author (2016)
- Figure 166: Structural and environmental concept in section. Author (2016)
- Figure 167: The tectonic expression relates to identity. Author (2016)
- Figure 168: Initial exploration of structure in section. Author (2016)
- Figure 169: Main structural section (A). Author (2016)
- Figure 170: Structural section (C). Author (2016)
- Figure 171: Structural explorations. Author (2016)
- Figure 172: Detail explorations of roof and wall junctions. Author (2016)
- Figure 173: Workshop roof junction detail. Author (2016)
- Figure 174: Archive floor and wall junction detail. Author (2016)
- Figure 175: Camden State Park house. Ahrens, D. Ellison, T. Sterling, R. 1981. Earth Sheltered homes: Plans and designs. New York: Van Nostrand Reinhold Company.
- Figure 176: South wall/roof detail of the Camden State Park house. Ahrens, D. Ellison, T. Sterling, R. 1981. Earth Sheltered homes: Plans and designs. New York: Van Nostrand Reinhold Company.
- Figure 177: Three-dimensional structure within context. Author (2016)
- Figure 178: Construction detail of the observation deck. Author (2016)
- Figure 179: Water and waste strategies. (2016)
- Figure 180: A 3D illustration of the workshops' heating and cooling strategy. Author (2016)
- Figure 181: A 3D illustration of the energy chamber. Author (2016)
- Figure 182: Plan configurations with environmental and passive strategies illustrated. Author (2016)
- Figure 183: The energy capacity of one reservoir surface covered with solar PV's. [O]. Available: <http://www.solarroofcalculator.appspot.com/>. Accessed 5 August 2016.
- Figure 184: Final site layout. Author (2016)
- Figure 185: Final LEVEL 2 layout. Author (2016)
- Figure 186: Final LEVEL 3 layout. Author (2016)
- Figure 187: Final LEVEL 4 layout. Author (2016)
- Figure 188: Final LEVEL 5 layout. Author (2016)
- Figure 189: Final LEVEL 6 layout. Author (2016)

- Figure 190: Final LEVEL 7 layout. Author (2016)  
Figure 191: Final LEVEL 8 layout. Author (2016)  
Figure 192: Structural clarification of the Core and Archive buildings. Author (2016)  
Figure 193: Structural clarification of the Laboratory and Observation deck buildings. Author (2016)  
Figure 194: Detail (not to scale) of the Observation deck. Author (2016)  
Figure 195: 3-dimensional detail (not to scale) of the Observation deck. Author (2016)  
Figure 196: 3-dimensional detail (not to scale) of the Observation deck. Author (2016)  
Figure 197: 3-dimensional detail (not to scale) of the Archive. Author (2016)  
Figure 198: 3-dimensional detail (not to scale) of the Archive. Author (2016)  
Figure 199: 3-dimensional section of the Laboratory (right) and the seed vault (left). Author (2016)  
Figure 200: 3-dimensional section (not to scale) of the Observation deck, illustrating how hot air is extracted from the building during summer. Author (2016)  
Figure 201: 3-dimensional section of the Workshops and Archive, illustrating how passive strategies were considered. Author (2016)  
Figure 202: 3-dimensional section of the Workshops and Archive, illustrating how passive strategies were considered. Author (2016)  
Figure 203: 3-dimensional section of the Energy Chamber, illustrating how passive strategies were considered. Author (2016)  
Figure 204: Main technical section. Author (2016)  
Figure 205: 3-dimensional illustration of the first scenario: a protected and self-sustained community. Author (2016)  
Figure 206: 3-dimensional illustration of the second scenario: a monument falling to ruin. Author (2016)  
Figure 207: 3-dimensional illustration of an architecture of refuge in its entirety. Author (2016)  
Figure 208: Technical section of Workshops. Author (2016)  
Figure 209: Technical section of Archive. Author (2016)  
Figure 210: Photograph of final model. Author (2016)  
Figure 211: Photograph of final model. Author (2016)  
Figure 212: Interior rendering of the Laboratory. Author (2016)  
Figure 213: Interior rendering of the Observation deck. Author (2016)  
Figure 214: Interior rendering of the walkway between the Core and the Observation deck. Author (2016)  
Figure 215: Interior rendering of the Archive dining area. Author (2016)