

TABLE XXIV—(continued).
The Dioestrous Periods, 1929-1941.

GROUP.	FIFTH PERIOD, 1934-35.			SIXTH PERIOD, 1935-36.		
	Dioestrous Periods.		Percentage of Cases in which Oestrus recurred after Normal Interval of 18-23 days.	Dioestrous Periods.		Percentage of Cases in which Oestrus recurred after Normal Interval of 18-23 days.
	Range.	Mode.		Range.	Mode.	
A.....	Days. 18-74	Days. 21	68.8	Days. 4-100	Days. 20	73.9
B.....	1-156	20	50.0	20-22	20	100.0
C.....	9-437	20	58.8	10-74	19	30.2
ALL GROUPS....	1-437	—	59.2	4-100	—	68.0

GROUP.	SEVENTH PERIOD, 1936-37.			EIGHTH PERIOD, 1937-38.		
	Dioestrous Periods.		Percentage of Cases in which Oestrus recurred after Normal Interval of 18-23 days.	Dioestrous Periods.		Percentage of Cases in which Oestrus recurred after Normal Interval of 18-23 days.
	Range.	Mode.		Range.	Mode.	
A.....	Days. 6-44	Days. 20	40.0	Days. 19-79	Days. 22	53.9
B.....	13-155	21, 22	57.7	20-40	20	70.0
C.....	20-24	21	92.3	11-107	20	57.1
ALL GROUPS....	6-155	—	63.3	11-107	—	59.5

TABLE XXIV—(continued).
The Dioestrous Periods, 1929-1941.

GROUP.	NINTH PERIOD, 1938-39.			TENTH PERIOD, 1939-40.		
	Dioestrous Periods.		Percentage of Cases in which Oestrus recurred after Normal Interval of 18-23 days.	Dioestrous Periods.		Percentage of Cases in which Oestrus recurred after Normal Interval of 18-23 days.
	Range.	Mode.		Range.	Mode.	
A.....	Days. 15-62	Days. 21	54.5	Days. 17-41	Days. 19	66.7
B.....	6-106	20	57.7	18-67	19	87.2
C.....	20-117	20, 22	50.0	2-49	20	57.9
ALL GROUPS....	6-117	—	54.0	2-67	—	70.6

GROUP.	ELEVENTH PERIOD, 1940-41.			TWELFTH PERIOD, 1941-42.		
	Dioestrous Periods.		Percentage of Cases in which Oestrus recurred after Normal Interval of 18-23 days.	Dioestrous Periods.		Percentage of Cases in which Oestrus recurred after Normal Interval of 18-23 days.
	Range.	Mode.		Range.	Mode.	
A.....	Days. 6-56	Days. 20	53.8	Days. 41	Days. 41	0
B.....	19-86	a	40.0	—	—	—
C.....	22-244	a	33.3	41	41	0
ALL GROUPS....	6-244	—	42.4	41	41	0

Calving Data, 1930

Group and Cow No.	1930-1931-1932.				1931-1932-1933.			
	Date of Service.	Date of Calving.	Gestation Period.	Sex of Calf.	Birth-weight of Calf.	Date of Service.	Date of Calving.	Gestation Period.
GROUP A.								
3591.....	27/11/30	Killed in extremis.	Days.	Non-pregnant.	lb.	Died 11/2/32	—	Days.
3592.....	5/5/31	6/2/32	—	Male.	82·0	13/4/32	—	—
3593.....	18/10/30	21/7/31	277	Female.	60·0	30/8/32	Inverted uterus	281
3594.....	1/11/30	13/8/31	285	Male.	80·5	18/9/32	{	279
3595.....	24/12/30	25/9/31	275	Male.	75·5	25/11/31	30/8/32	284
3596*.....	—	—	—	—	—	30/11/31	9/9/32	277
3597.....	28/10/30	3/8/31	280	Male.	75·0	5/2/32	5/11/32	272
3598.....	10/11/30	18/8/31	281	Female.	73·5	19/12/31	16/9/32	284
3599.....	23/11/30	31/8/31	281	Female.	72·0	24/6/32	4/4/33	282
3600.....	17/11/30	24/8/31	280	Female.	90·5	20/11/31	28/8/32	286
3601.....	9/4/31	11/1/32	277	Female.	66·0	20/12/31	1/10/32	—
3602.....	16/4/31	(Aborted 13/1/32 at 272 days).	—	—	—	17/4/32	24/1/33	282
3603*.....	—	—	—	—	—	29/8/32	8/6/33	284
3604.....	28/4/31	3/2/32	281	Female.	51·0	9/4/32	15/1/33	281
3605.....	4/4/31	7/1/32	278	Female.	61·0	17/4/32	23/1/33	281
3606.....	21/4/31	2/2/32	287	Male.	86·0	5/4/32	16/1/33	286
3607.....	1/4/31	13/1/32	287	Female.	80·0	15/4/32	4/1/33	264
3608.....	16/4/31	20/1/32	279	Male.	70·0	13/4/32	23/1/33	285
3609*.....	—	—	—	—	—	28/4/32	1/2/33	279
3611.....	8/11/30	14/8/31	279	Male.	65·6	3/4/32	10/1/33	282
3612.....	3/12/30	31/8/31	271	Male.	65·0	14/2/32	21/11/32	281
3613.....	29/10/30	12/8/31	288	Male.	96·0	9/12/31	8/9/32	274
3614*.....	—	—	—	—	—	14/12/31	23/9/32	284
3616.....	24/10/30	5/8/31	286	Female.	77·5	6/1/32	14/10/32	282
3617.....	20/10/30	4/8/31	289	Female.	75·0	24/1/32	31/10/32	281
3618.....	1/11/30	9/8/31	282	Male.	87·5	9/12/31	18/9/32	284
3619.....	14/11/30	18/8/31	277	Male.	69·0	3/12/31	14/9/32	286
3620.....	22/10/30	30/7/31	282	Female.	75·0	9/1/32	12/10/32	277
						4/12/31	9/9/32	280

* Drafted into experiment

Group and D.O.B. No.	1934—1935—1936.				1935—1936—1937.				
	Date of Service.	Date of Calving.	Gestation Period.	Sex of Calf.	Birthweight of Calf.	Date of Service.	Date of Calving.	Gestation Period.	Sex of Calf.
GROUP A.									
3593.....	4/9/35	9/6/36	Days.	Male.	70.0	14/9/36	26/6/37	Days.	Male.
3594.....	10/1/35	16/10/35	279	Male.	60.0	8/1/36	27/10/36	285	Female.
3595.....	7/8/35	11/5/36	278	Female.	67.0	—	—	293	—
3596.....	20/1/35	22/10/35	275	Female.	71.0	21/4/36	14/1/37	268	Male.
3597.....	18/3/35	18/12/35	275	Male.	71.0	14/2/36	17/11/36	277	Male.
3598.....	10/1/35	17/10/35	280	Male.	70.0	28/1/36	4/11/36	281	Male.
3599.....	11/3/35	17/12/35	281	Female.	66.0	2/3/36	5/12/36	278	Male.
3600.....	25/6/35	19/3/36	268	Male.	37.5	3/7/36	6/4/37	277	Male.
GROUP B.									
3607.....	9/7/35	10/4/36	276	Female.	55.0	17/7/36	17/4/37	274	Female.
3602.....	19/9/35	24/6/36	279	Male.	61.5	4/9/36	4/6/37	273	Female.
3603.....	5/7/35	6/4/36	276	Male.	55.5	30/6/36	3/4/37	277	Female.
3604.....	20/9/35	Aborted 27/5/36	—	—	—	—	—	—	—
3605.....	—	—	—	—	—	—	—	—	—
3606.....	—	—	—	—	—	27/7/37	—	—	—
3707.....	9/7/35	12/4/36	278	Female.	51.0	20/7/36	29/4/37	283	Male.
3608.....	—	—	—	—	—	—	—	—	—
3609.....	16/5/35	16/2/36	276	Female.	82.0	28/4/36	10/1/37	277	Female.
GROUP C.									
3611.....	5/6/35	6/3/36	275	Male.	Not recorded.	—	—	—	—
3612.....	7/3/35	1/12/35	269	Male.	43.0	2/6/36	27/2/37	270	Female.
3613.....	—	—	—	—	—	—	—	—	—
3614.....	12/12/34	17/9/35	279	Male.	64.0	2/1/36	5/10/36	277	Female.
3616.....	12/1/35	22/10/35	283	Female.	79.5	9/1/36	15/10/36	280	Female.
3617.....	6/6/35	2/3/36	270	Female.	58.5	12/6/36	18/3/37	279	Male.
3618.....	—	—	—	—	—	—	—	—	—
3619.....	27/1/35	29/10/35	275	Male.	64.0	9/1/36	14/10/36	279	Female.
3620.....	22/1/35	28/10/35	279	Male.	64.0	11/3/36	7/12/36	281	Male.

TABLE XXV (cont.)

1936—1937—1938.					1937—1938—1939.				
Date of Service.	Date of Calving.	Gestation Period.	Sex of Calf.	Birth-weight of Calf.	Date of Service.	Date of Calving.	Gestation Period.	Sex of Calf.	Birth-weight of Calf.
Discd 25/7/37		Days.		lb.			Days.		lb.
22/3/37	7/1/38	291	Male.	73.0	12/4/38	16/1/39	—	Female.	75.5
21/1/37	24/10/37	276	Female.	54.0	30/5/38	28/2/39	274	Male.	67.0
2/4/37	1/1/38	274	Male.	60.0	5/5/38	2/2/39	273	Male.	72.0
Sold for slaughter on 21/7/38					4/4/38	11/1/39	282	Male.	66.5
13/2/37	17/11/37	277	Female.	70.0	6/5/38	10/2/39	280	Female.	68.0
12/3/37	18/12/37	281	Female.	69.5					
Sold for slaughter on 21/7/38		21/7/38							
25/10/37	22/7/38	270	Female.	66.0	4/11/38	31/7/39	269	Female.	56.0
9/10/37	14/7/38	278	Male.	60.0	10/10/38	7/7/39	270	Female.	45.0
3/7/37	7/4/38	278	Female.	66.0	29/7/38	7/5/39	282	Male.	61.0
20/2/38	27/11/38	280	Male.	60.5	5/4/39	Aborted 1/8/39	—	—	—
		—	—	—			—	—	—
2/8/37	7/5/38	278	Female.	78.0	23/9/38	4/7/39	284	Female.	57.0
24/4/37	25/1/38	276	Female.	75.0					
30/5/37	27/2/38	273	Male.	40.5	13/7/38	Aborted 24/11/38	—	—	—
27/3/37	3/1/38	282	Male.	60.5	14/4/38	20/1/39	281	Female.	58.0
15/1/37	24/10/37	282	Female.	65.0	25/1/38	1/11/38	280	Male.	75.0
25/6/37	3/4/38	282	Male.	73.0	30/6/38	3/4/39	277	Female.	57.0
		—	—	—			—	—	—
23/1/37	28/10/37	278	Female.	57.0	6/4/38	11/1/39	280	Female.	73.0
4/3/37	9/12/37	280	Female.	67.5	23/3/38	28/12/38	260	Female.	71.5

TABLE XXV—(continued).

Group and Cow No.	1938—1939—1940.					1939—1940—1941.					1940—1941—1942.				
	Date of Service.	Date of Calving.	Gestation Period.	Sex of Calf.	Birth-weight of Calf.	Date of Service.	Date of Calving.	Gestation Period.	Sex of Calf.	Birth-weight of Calf.	Date of Service.	Date of Calving.	Gestation Period.	Sex of Calf.	Birth-weight of Calf.
GROUP A.					lb.										lb.
3593.....	—	23/3/40	286	Male.	82.0	—	12/4/41	274	Female.	65.0	—	—	—	—	—
3594.....	16/6/39	5/6/40	273	Male.	62.0	13/7/40	25/7/41	279	Female.	56.0	—	—	—	—	—
3595.....	6/9/39	Died 11/11/39	—	—	—	19/10/40	—	—	—	—	—	—	3 Months pregnant	—	—
3596.....	3/5/39	—	—	—	—	—	—	—	—	—	—	—	—	—	—
3597.....	—	—	—	—	—	—	—	—	—	—	—	—	—	—	—
3598.....	19/4/39	20/1/40	286	Male.	64.0	6/5/40	8/2/41	278	Male.	72.5	3/8/41	12/5/42	282	Male.	77.0
3599.....	20/5/39	24/2/40	280	Twin Females.	43.0 47.5	28/5/40	8/3/41	283	Female.	62.0	11/8/41	15/5/42	277	Male.	72.5
3600.....	—	—	—	—	—	—	—	—	—	—	—	—	—	—	—
GROUP B.															
3601.....	20/10/39	18/7/40	272	Female.	57.5	—	20/10/41	—	—	—	—	—	—	—	—
3602.....	5/10/39	9/7/40	278	Male.	51.0	6/8/41	24/5/40	277	Female.	58.0	—	—	—	—	—
3603.....	2/8/39	16/5/40	278	Male.	67.0	20/8/40	—	—	—	—	—	—	—	—	—
3604.....	24/2/40	Aborted 14/8/40	—	—	—	—	—	—	—	—	—	—	—	—	—
3605.....	—	—	—	—	—	—	—	—	—	—	—	—	—	—	—
3606.....	—	—	—	—	—	—	—	—	—	—	—	—	—	—	—
3607.....	3/10/39	4/7/40	275	Female.	66.0	14/2/41	23/11/41	282	Female.	53.0	—	—	—	—	—
3608.....	—	—	—	—	—	—	—	—	—	—	—	—	—	—	—
3609.....	—	—	—	—	—	—	—	—	—	—	—	—	—	—	—
GROUP C.															
3611.....	—	—	—	—	—	—	—	—	—	—	—	—	—	—	—
3612.....	2/3/39	21/11/39	264	Male.	31.8	—	—	—	—	—	—	—	—	—	—
3613.....	—	—	—	—	—	—	—	—	—	—	—	—	—	—	—
3614.....	2/6/39	11/3/40	283	Male.	60.0	19/6/40	24/3/41	278	Female.	58.0	11/8/41	27/5/42	289	Male.	73.5
3616.....	27/1/39	1/11/39	278	Male.	58.0	—	—	—	—	—	—	—	—	—	—
3617.....	30/6/39	Aborted 23/1/40	—	—	—	21/6/40	31/3/41	283	Female.	42.5	26/7/41	30/5/42	308	Female.	39.0
3618.....	—	—	—	—	—	—	—	—	—	—	—	—	—	—	—
3619.....	6/5/39	4/2/40	274	Female.	47.0	4/5/40	13/2/41	285	Male.	65.0	31/10/41	31/7/42	273	Male.	41.0
3620.....	25/7/39	29/4/40	279	Male.	69.0	8/8/40	Aborted 21/2/41	—	—	14.5	—	—	—	—	—

TABLE XXVI.
Gestation Period.—Frequencies.
(a) FIRST CALVING

GROUPS.	GESTATION PERIODS IN DAYS.																Total.					
	264	269	271	272	273	274	275	276	277	278	279	280	281	282	283	284		285	286	287	288	289
A.....	—	—	—	—	—	—	1	—	2	—	—	2	2	—	—	—	1	—	—	—	—	8
B.....	—	—	—	—	—	—	—	—	1	1	—	—	1	—	—	—	—	—	2	—	—	6
C.....	—	—	1	—	—	—	—	—	1	—	—	—	—	2	—	—	—	1	—	1	—	8

(b) SECOND CALVING.

A.....	—	—	—	1	—	—	—	—	1	—	—	—	1	1	—	2	—	1	—	—	—	8
B.....	1	—	—	—	—	—	—	—	—	1	—	—	2	2	—	1	1	1	—	—	—	9
C.....	—	—	—	—	—	1	—	—	1	—	—	1	2	1	—	2	—	1	—	—	—	9

(c) THIRD CALVING.

A.....	—	—	—	—	—	—	1	1	—	1	—	—	2	1	1	—	1	—	—	—	—	8
B.....	—	—	—	—	—	—	—	2	—	—	1	2	2	1	—	—	—	1	—	—	—	9
C.....	—	—	—	—	—	1	—	1	1	—	—	—	—	—	—	2	—	2	—	—	—	9

(d) FOURTH CALVING.

A.....	—	—	—	1	1	—	—	—	—	1	1	—	—	1	1	—	1	—	—	—	—	7
B.....	—	—	—	1	1	—	—	3	1	—	—	—	—	1	—	—	—	—	—	—	—	7
C.....	—	2	—	1	—	—	—	1	—	2	1	—	—	—	—	—	—	—	—	—	—	7

TABLE XXVI (continued).
(e) FIFTH CALVING.

GROUPS.	GESTATION PERIODS IN DAYS.																TOTALS.				
	264	268	269	270	272	273	274	275	276	277	278	279	280	281	282	283	284	285	286	291	293
A.....	—	1	—	—	—	—	—	2	—	—	1	2	1	1	—	—	—	—	—	—	—
B.....	—	—	—	—	—	—	—	—	3	—	1	1	—	—	—	—	—	—	—	—	—
C.....	—	—	1	1	—	—	—	2	—	—	—	2	—	—	—	1	—	—	—	—	—

(f) SIXTH CALVING.

A.....	—	1	—	—	—	—	—	—	—	2	1	—	—	1	—	—	—	1	—	—	1
B.....	—	—	—	—	—	1	1	—	—	2	—	—	—	—	—	1	—	—	—	—	—
C.....	—	—	—	1	—	—	—	—	—	1	—	2	1	1	—	—	—	—	—	—	—

(g) SEVENTH CALVING.

A.....	—	—	—	—	—	—	1	—	1	1	—	—	—	1	—	—	—	—	—	1	—
B.....	—	—	—	1	—	—	—	—	1	—	3	—	1	—	—	—	—	—	—	—	—
C.....	—	—	—	—	—	1	—	—	—	—	1	—	1	—	3	—	—	—	—	—	—

(h) EIGHTH CALVING.

A.....	—	—	—	—	—	1	1	—	—	—	—	1	1	—	1	—	—	—	—	—	—
B.....	—	—	1	1	—	—	—	—	—	—	—	—	—	—	1	—	1	—	—	—	—
C.....	—	—	—	—	—	—	—	—	—	1	—	—	3	1	—	—	—	—	—	—	—

TABLE XXVII

GROUP.	SEX.	FIRST PERIOD.			SECOND PERIOD.		
		No.	Gestation Period.		No.	Gestation Period.	
			Range.	Average.		Range.	Average.
			Days.	Days.		Days.	Days.
A.....	M	4	275-285	279·2	4	277-282	279·7
	F	4	277-281	279·7	4	272-286	281·5
B.....	M	2	279-287	283·9	2	281-282	281·5
	F	4	277-287	280·8	7	264-285	280·1
C.....	M	5	271-288	279·4	4	280-286	282·8
	F	3	282-289	285·7	5	274-284	279·6
ALL GROUPS....	M	11	271-288	280·0	10	277-286	281·3
	F	11	277-289	282·1	16	264-286	280·4

GROUP.	SEX.	SEVENTH PERIOD.			EIGHTH PERIOD.		
		No.	Gestation Period.		No.	Gestation Period.	
			Range.	Average.		Range.	Average.
			Days.	Days.		Days.	Days.
A.....	M	2	274-291	282·5	3	273-282	276·3
	F	3	276-281	278·0	2	279-280	279·5
B.....	M	2	278-280	279·0	1	282-	282·0
	F	4	270-278	275·5	3	269-284	274·3
C.....	M	3	273-282	279·0	1	280-	280·0
	F	3	278-282	280·0	4	277-281	279·5
ALL GROUPS....	M	7	273-291	280·2	5	273-282	279·4
	F	10	270-282	277·8	9	269-284	277·8

TABLE XXVII. (cont.) *Gestation Periods.*

THIRD PERIOD.			FOURTH PERIOD.		
No.	Gestation Period.		No.	Gestation Period.	
	Range.	Average.		Range.	Average.
	Days.	Days.		Days.	Days.
4	278-285	281·7	3	273-279	276·7
3	275-282	278·5	5	272-285	280·5
5	276-286	280·6	5	273-282	276·8
4	276-282	279·5	2	272-276	274·0
4	276-286	280·7	3	272-280	276·0
5	274-286	280·4	4	269-278	273·5
13	276-286	281·0	11	272-282	276·5
12	274-286	279·5	11	269-282	276·0

NINTH PERIOD.			TENTH PERIOD.		
No.	Gestation Period.		No.	Gestation Period.	
	Range.	Average.		Range.	Average.
	Days.	Days.		Days.	Days.
3 Twins. 1 & 1	273-286	278·3	1	278-	278·0
	280-	280·0	3	274-283	278·5
2	278-278	278·0	—	—	—
2	272-275	273·5	2 (1† abortion)	277-282	279·5
4	264-283	276·0	2	285-	285·0
1	274-	274·0	2	278-283	280·5
9	264-286	277·4	3	278-285	281·5
5	272-280	275·8	7	274-283	279·6

M. = Males.

F. = Females.

← 331-332a

331-332c →

TABLE XXVII (cont.)

FIFTH PERIOD.			SIXTH PERIOD.		
No.	Gestation Period.		No.	Gestation Period.	
	Range.	Average.		Range.	Average.
	Days.	Days.		Days.	Days.
5	268-280	262·2	6	268-285	277·7
3	275-281	278·0	1	293-	293·0
2	276-279	277·5	1	283-	283·0
3	276-278	276·7	4	273-277	275·3
5	269-279	275·4	2	279-281	280·0
2	270-283	276·5	4	270-280	276·5
12	268-280	276·4	9	268-285	280·2
8	270-283	277·1	9	270-293	281·6

ELEVENTH PERIOD.			ALL PERIODS.		
No.	Gestation Period.		No.	Gestation Period.	
	Range.	Average.		Range.	Average.
	Days.	Days.		Days.	Days.
2	277-282	279·5	37	268-291	278·7
—	—	—	30	272-293	279·9
—	—	—	22	273-287	280·2
—	—	—	35	264-287	277·5
2	273-289	281·0	35	264-289	279·6
1	308-	308·0	34	269-308	279·7
4	273-289	280·3	94	264-291	279·5
1	308-	308·0	99	264-308	279·0

← 331-332b

Group and D.O.B. No. of Cow.	Approximate age at inclusion in Experiment.	AGE AT FIRST CALVING.		AGE AT SUBSEQUENT CALVINGS AND ABORTIONS.						
		1st.	2nd.	3rd.	4th.	5th.	6th.	7th.		
GROUP A.	JULY, 1929. MONTHS.	Years. Months	Years. Months.	Years. Months.	Years. Months.	Years. Months.	Years. Months.	Years. Months.	Years. Months.	
3591.....	15	A. 12/1/31	—	—	—	—	—	—	—	
3592.....	15	B. 2 11	3 10	C. 11/2/1932	—	—	—	—	—	
3593.....	15	3 4	B. 4 5	5 3	6 2	7 3	8 3	9 3	9 3	
3594.....	15	3 4	4 5	5 5	6 7	7 7	8 7	9 10	9 10	
3595.....	15	3 6	4 5	6 1	7 2	8 2	9 7	10 11	10 11	
3596.....	45	E.	4 7	5 7	6 7	7 7	8 10	9 9	9 9	
3597.....	15	3 4	4 6	5 6	6 7	7 9	8 8	F. 21/7/1938	—	
3598.....	15	3 5	5 0	6 7	7 7	8 7	9 8	10 10	10 10	
3599.....	15	3 5	4 5	5 7	6 8	7 9	8 9	9 9	9 9	
3600.....	15	3 5	4 6	5 7	6 8	8 0	9 1	F. 21/7/1938	—	
GROUP B.										
3601.....	15	3 9	4 10	5 11	7 1	8 1	9 1	10 4	10 4	
3602.....	15	B. 3 10	5 3	6 3	7 4	8 3	9 2	10 4	10 4	
3603.....	45	E. —	4 9	5 10	6 11	8 1	9 0	10 1	10 1	
3604.....	15	3 10	4 10	6 1	7 2	B. 8 2	B. 8 7	10 8	10 8	
3605.....	15	3 9	4 9	5 10	7 0	C. 31/5/1935	—	—	—	
3606.....	15	3 10	4 10	5 11	7 0	B. 9 9	C. 27/12/1937	—	—	
3607.....	15	3 9	4 9	6 9	8 1	9 1	10 2	11 3	11 3	
3608.....	15	3 10	4 10	B. 5 5	6 4	H. 21/7/1938	—	—	—	
3609.....	45	E.	4 9	5 10	7 0	7 11	8 10	9 10	9 10	
3610.....	15	C. 11/8/1929	—	—	—	—	—	—	—	
GROUP C.										
3611.....	15	3 4	4 7	5 10	6 11	8 0	F. 21/9/1938	—	—	
3612.....	15	3 5	4 5	5 5	6 6	7 8	8 11	9 11	9 11	
3613.....	15	3 4	4 5	5 6	6 10	F. 21/7/1938	—	—	—	
3614.....	45	E. —	4 6	5 8	7 6	8 7	9 9	10 10	10 10	
3615.....	J. 15	1 8	C. 4/8/1930	—	—	—	—	—	—	
3616.....	15	3 4	4 7	5 7	6 7	7 7	8 7	9 7	9 7	
3617.....	15	3 4	4 5	5 10	7 0	7 11	9 0	10 0	10 0	
3618.....	15	3 4	4 5	5 5	B. 6 8	C. 4/12/1934	—	—	—	
3619.....	15	3 5	4 6	5 6	6 7	7 7	8 7	9 7	9 7	
3620.....	15	3 4	4 5	5 6	6 7	7 7	8 9	9 9	9 9	

TABLE XXVIII.

Summary of the History of Reproduction

AND ABORTIONS.				NO. OF PREGNANCIES.		PERIODS BETWEEN SU...			
Sth.	9th.	10th.	11th.	Calves.	Abortions.	1-2	2-3	3-4	4-5
Years. Months.	Years. Months.	Years. Months.	Years. Months.						
—	—	—	—	0	0	—	—	—	—
—	—	—	—	1	1	10·9	—	—	—
C. 25/7/1937	—	—	—	6	1	13·3	9·7	11·1	12·2
10 10	12 0	13 0	—	10	0	12·6	12·5	12·7	12·4
12 3	13 4	D. 14 3	—	9	0	11·5	20·5	11·7	12·2
10 10	C. 11/11/1939	—	—	7	0	—	11·8	13·8	11·9
—	—	—	—	6	0	13·5	12·6	13·3	14·2
11 10	12 10	14 1	—	10	0	19·6	18·6	11·8	12·6
10 11	G. 11 11	12 11	14 1	12	0	11·9	14·6	12·6	12·5
—	—	—	—	6	0	13·3	12·9	12·8	15·9
—	—	—	—	—	—	—	—	—	—
11 4	12 4	D. 14 3	—	9	0	11·3	13·4	13·3	12·0
11 4	12 4	B. 13 7	—	8	2	16·9	12·8	12·3	11·6
11 2	12 2	13 2	D. 14 3	9	0	—	13·5	12·0	13·2
B. 11 4	B. 12 5	H. 2/7/1941	—	5	4	11·6	15·5	12·1	12·5
—	—	—	—	4	0	12·3	13·2	12·4	—
—	—	—	—	4	1	11·0	13·0	13·1	33·5
12 3	13 8	H. 10/7/1942	—	9	0	12·3	23·9	14·8	12·6
—	—	—	—	3	1	12·4	6·7	11·3	—
C. 3/2/1938	—	—	—	6	0	—	13·6	12·3	11·3
—	—	—	—	0	0	—	—	—	—
—	—	—	—	—	—	—	—	—	—
—	—	—	—	5	0	15·2	14·7	12·0	12·8
B. 10 8	B. 11 8	F. —	—	7	2	12·3	12·3	12·0	14·5
—	—	—	—	4	0	13·4	12·9	15·0	—
12 0	13 0	14 2	H. 9/11/42	9	0	—	14·7	20·4	12·6
—	—	—	—	1	0	—	—	—	—
10 7	11 7	F. —	—	9	0	14·9	11·9	12·1	11·7
11 0	B. 11 10	13 0	14 2	10	1	13·5	16·9	12·9	11·6
—	—	—	—	3	1	13·2	12·7	13·8	—
10 10	11 10	12 11	14 4	11	0	13·8	12·3	12·3	12·0
10 9	12 1	B. 12 11	D. 14 3	9	1	13·3	13·3	12·5	11·9

← 333-334a
 = Killed in Extremis.
 = Aborted.
 = Died.

D = Pregnant at Slaughter.
 E = Not in Experiment at first Calving.
 F = Sold.

333-334c → G = Twins.
 H = Slaughtered.
 J = Pregnancy un

BETWEEN SUCCESSIVE CALVINGS AND ABORTIONS.
THIS AND DECIMAL FRACTIONS OF MONTHS.

						No. of Services required to Establish Pregnancy throughout the Experiment.		Age at which died from natural causes as stated.		Age at which Slaughtered.	REMARKS ON OVARIES AT POSTMORTEM.	
5-6	6-7	7-8	8-9	9-10	10-11	Range.	Average.	Months' Age.	Cause.	Months.	Right Ovary.	Left Ovary.
—	—	—	—	—	—	2	2	—	Pneumonia.....	33	Normal.	Normal.
—	—	—	—	—	—	1-2	1.5	46	Septicaemia Uterine prolapse.....	—	Normal.	Normal.
12.1	12.6	—	—	—	—	1-3	1.1	112	Toxaemia—Generalised Abscessation.....	—	Normal.	Normal.
12.4	14.4	12.3	14.6	12.7	—	1-6	1.5	—	—	169	Cystic.	Cystic.
17.5	16.2	15.2	13.7	—	—	1-8	2.8	—	—	D. 171	Normal.	Normal.
14.8	11.5	13.1	—	—	—	1-2	1.3	139	Pneumonia.....	—	Normal.	Normal.
11.0	—	—	—	—	—	1-4	1.5	—	—	124	Cystic.	Normal.
12.4	13.8	12.3	12.6	15.1	—	1-5	2.1	—	—	175	Normal.	Cystic Corpus Luteum
11.6	12.5	13.8	12.4	12.4	14.2	1-4	1.4	—	—	175	Normal.	Normal.
12.6	—	—	—	—	—	1-3	1.5	—	—	124	Cystic.	Cystic.
12.2	15.2	12.3	11.6	—	—	1-24	3.7	—	—	D. 171	Normal.	Normal.
11.3	13.3	11.8	12.1	—	—	1-13	2.3	165	Pneumonia.....	—	Normal.	Normal.
11.9	12.1	13.0	12.3	12.3	—	1-2	1.1	—	Destroyed on account of debility.....	D. 171	Normal.	Normal.
4.3	25.8	8.1	12.5	—	—	1-9	3.8	—	Destroyed on account of rectal stenosis and vaginal prolapse.....	159	Cystic.	Cystic.
—	—	—	—	—	—	1	1.0	86	Intestinal Stenosis....	—	Normal.	Normal.
—	—	—	—	—	—	1-9	2.6	117	Toxaemia due to abortion.....	—	Normal.	Normal.
12.3	13.9	12.0	16.5	—	—	1-7	1.8	—	—	171	Normal.	Normal.
—	—	—	—	—	—	1-2	1.3	—	—	124	Cystic.	Normal.
11.5	11.9	—	—	—	—	1-2	1.2	118	Post-Parturient Collapse.....	—	Normal.	Normal.
—	—	—	—	—	—	—	—	—	Anaplasmosis	—	Normal.	Normal.
—	—	—	—	—	—	1-2	1.2	—	—	124	Cystic.	Cystic.
14.9	12.0	10.9	11.9	—	—	1-4	1.6	—	—	150	Cystic.	Cystic.
—	—	—	—	—	—	1-	1.0	—	—	124	Cystic.	Cystic.
15.0	12.6	13.6	12.4	14.1	—	1-4	1.6	—	—	175	Normal.	Normal.
—	—	—	—	—	—	—	—	28	—	—	No Record.	No Record.
11.8	12.3	12.3	12.0	—	—	1-2	1.1	—	—	150	Cystic.	Cystic.
12.5	12.5	12.0	9.7	14.3	14.0	1-4	1.5	—	—	175	Normal.	Normal.
—	—	—	—	—	—	1-	1.0	80	Traumatic Pericarditis	—	Normal.	Normal.
11.5	12.5	14.5	12.8	12.3	17.6	1-2	1.1	172	Died during Parturition Debility.....	—	Normal.	Normal.
13.6	11.7	12.6	16.0	9.8	—	1-3	1.3	—	—	D. 171	Normal.	Normal.

s. Slaughtered.
Pregnancy unknown at time of purchase.



FIG. 1.—Group A: Cow 3595.

Date: 25.9.37.
Age: 9 years 6 months.
Weight: 1,517 lb.



FIG. 2.—Group B: Cow 3603.

Date: 25.9.37.
Age: 9 years 6 months.
Weight: 1,263 lb.

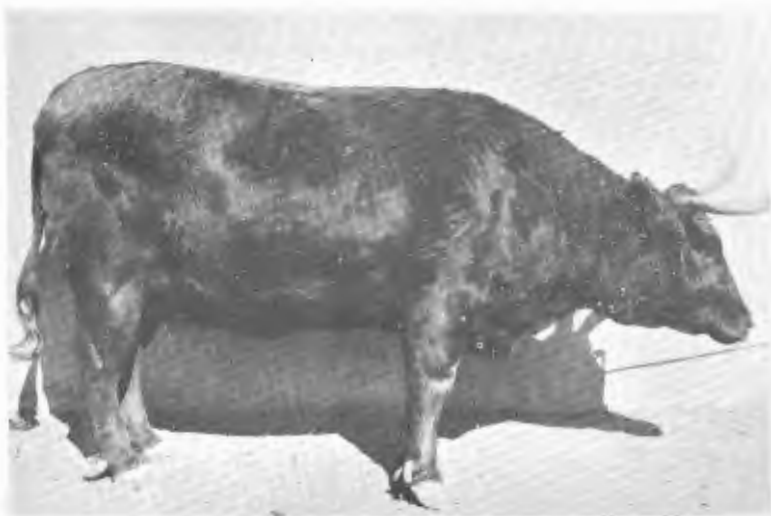


FIG. 3.—Group B: Cow 3606.

Date: 16.7.37.
Age: 9 years 4 months.
Weight: 1,519 lb.

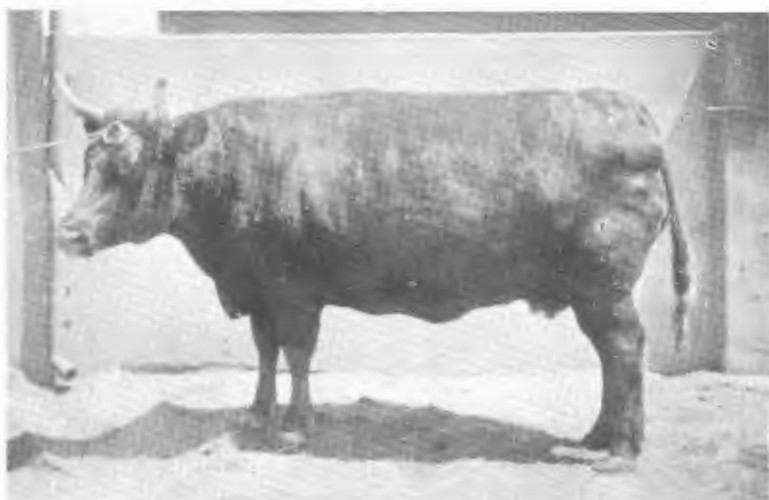


FIG. 4.—Group C: Cow 3613.

Date: 25.9.37.
Age: 9 years 6 months.
Weight: 1,744 lb.

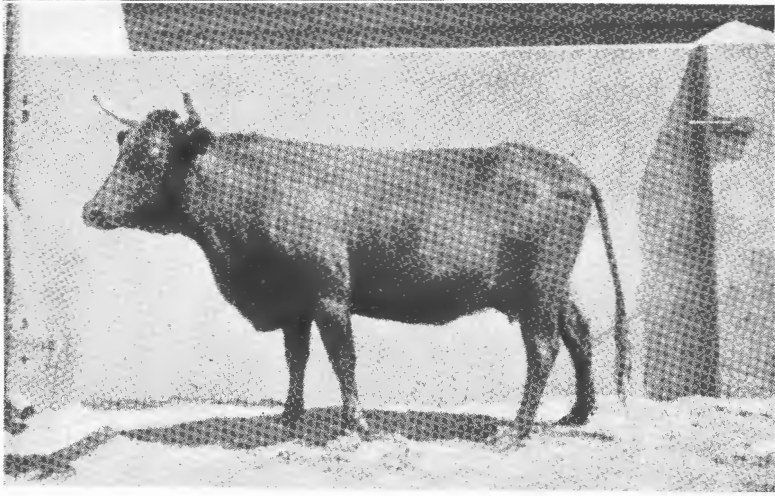


FIG. 5.—Group C: Cow 3620.
Date: 25.9.37.
Age: 9 years 6 months.
Weight: 1,043 lb.

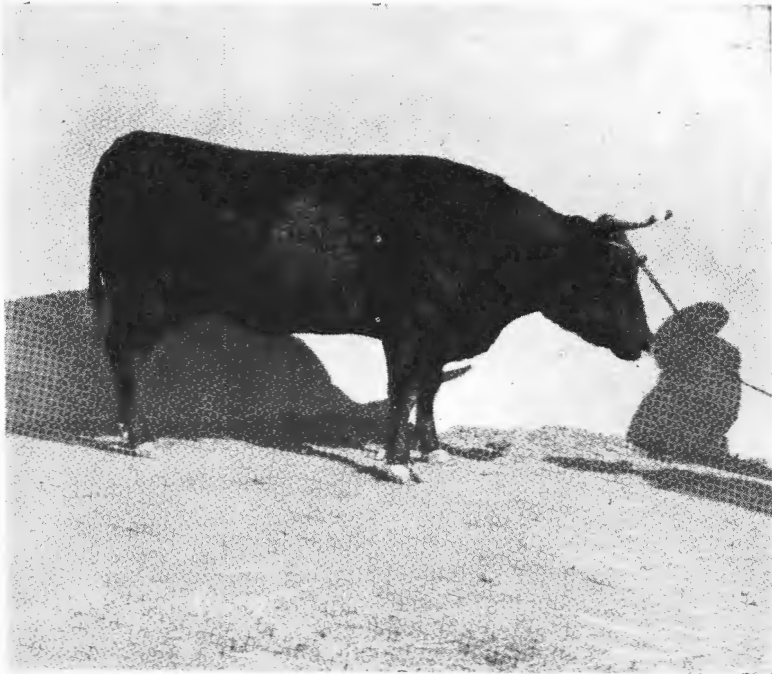


FIG. 6.—Group A: Cow 3597.
Date: 20.7.38.
Age: 10 years 4 months.
Weight: 1,258 lb.



FIG. 7.—Group A: Cow 3600.
Date: 30.6.38.
Age: 10 years 3 months.
Weight: 1,471 lb.

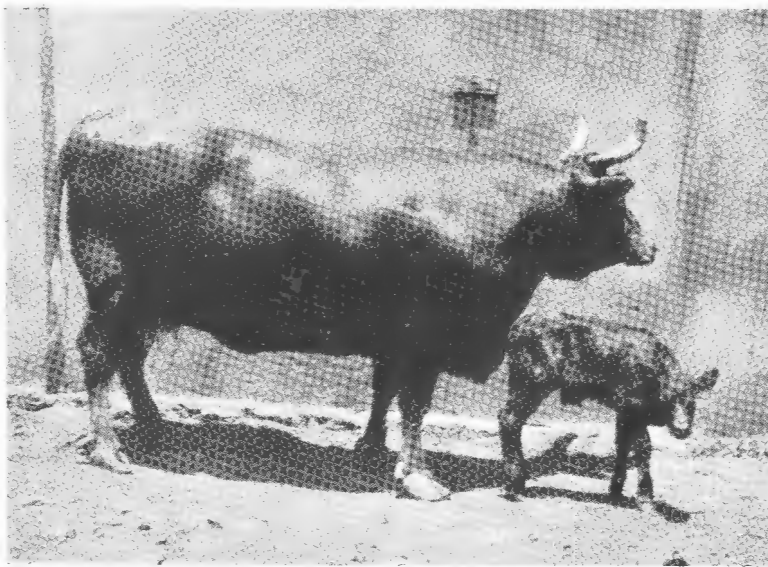


FIG. 8.—Group B: Cow 3604 and calf.
Date: 28.11.38.
Age: 10 years 8 months.
Weight: —1,548 lb.



FIG. 9.—Group C: Cow 3611.

Date: 30.6.38.

Age: 10 years 4 months.

Weight: 1,541 lb.

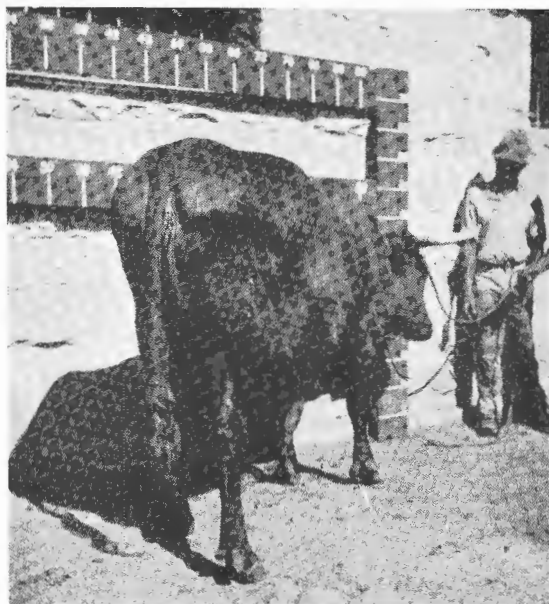


FIG. 10.—Group B: Cow 3603.

Date: 17.7.41.

Age: 13 years 4 months.

Weight: 1,275 lb.



FIG. 11.—Group B: Cow 3603.
Date: 17.7.41.
Age: 13 years 4 months.
Weight: 1,275 lb.



FIG. 12.—Group C: Cow 3619.
Date: 1.7.41.
Age: 13 years 4 months.
Weight: 745 lb.



FIG. 13.—Group A: Cows 3598, 3594, 3595.

Date: 14.4.42.
Ages: 14 years 1 month.
Weights: 1,185, 1,470, 1,270 lb.

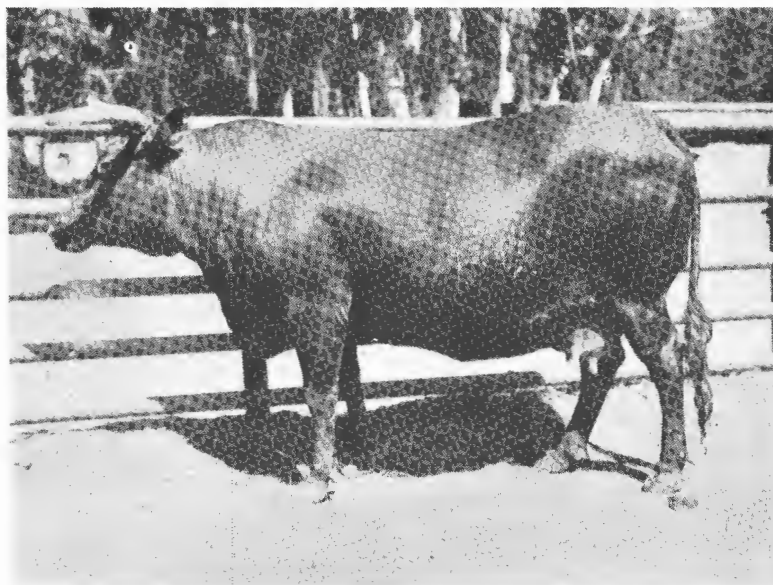


FIG. 14.—Group A: Cow 3594.

Date: 14.4.42.
Age: 14 years 1 month.
Weight: 1,470 lb.



FIG. 15.—Group A: Cow 3598.
Date: 14.4.42.
Age: 14 years 1 month.
Weight: 1,185.

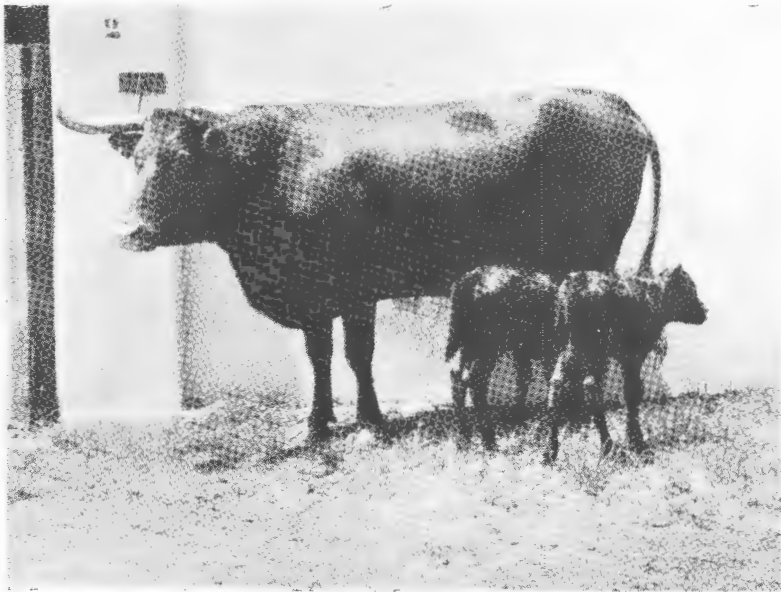


FIG. 16.—Group A: Cow 3599 and twin calves.
Date: 26.2.40.
Age: 11 years 11 months.
Weight: 1,124 lb.



FIG. 17.—Group B: Cows 3607, 3603, 3601.

Date: 14.4.42.
Ages: 14 years 1 month.
Weights: 850, 1,350, 1,276 lb.

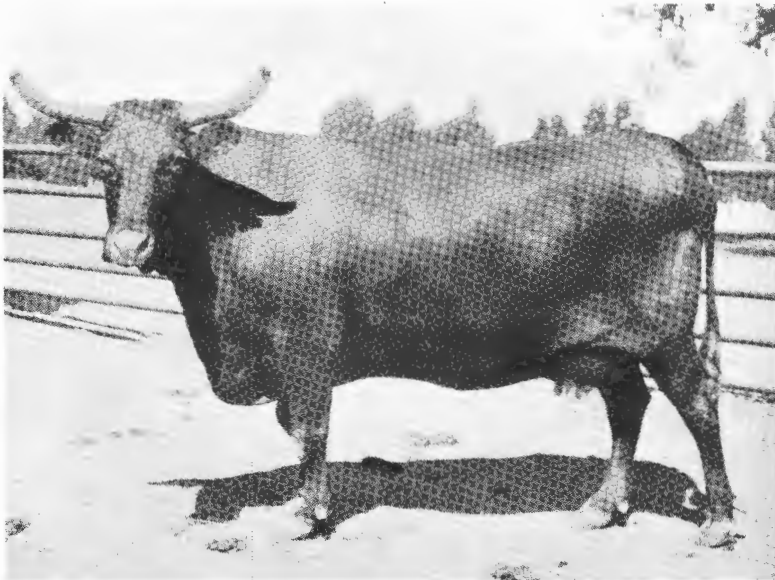


FIG. 18.—Group B: Cow 3603.

Date: 14.4.42.
Age: 14 years 1 month.
Weight: 1,350 lb.



FIG. 19.—Group B: Cow 3607.

Date: 14.4.42.
Age: 14 years 1 month.
Weight: 850 lb.

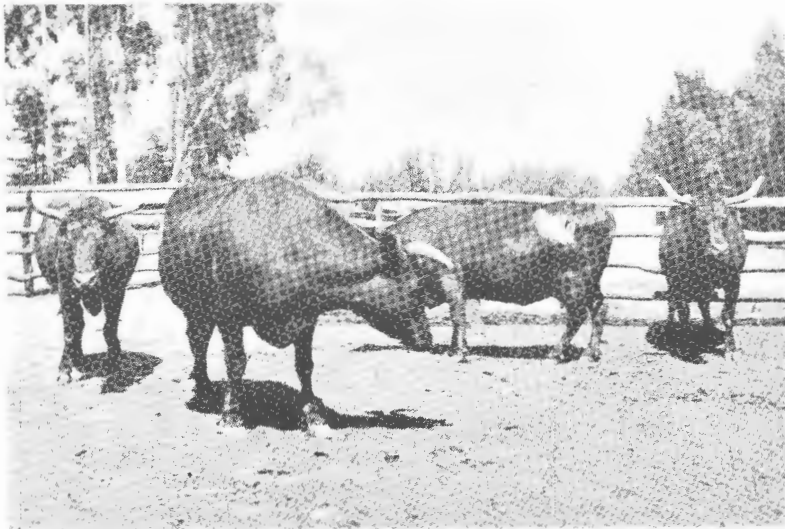


FIG. 20.—Group C: Cows 3617, 3614, 3620, 3619.

Date: 14.4.42.
Ages: 14 years 1 month.
Weights: 1,125, 1,252, 1,280, 861 lb.



FIG. 21.—Group C: Cow 3619.
Date 14.2.42.
Age: 14 years 1 month.
Weight: 861 lb.

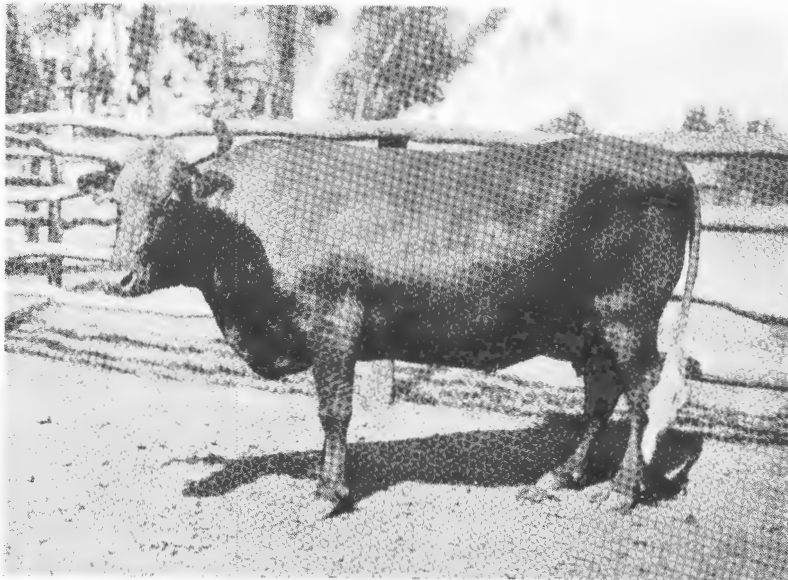


FIG. 22.—Group C: Cow 3620.
Date: 14.4.42.
Age: 14 years 1 month.
Weight: 1,280 lb.



FIG. 23.—Group A: Cow 3598.
Date: 8.11.42.
Age: 14 years 8 months.
Weight: 940 lb.

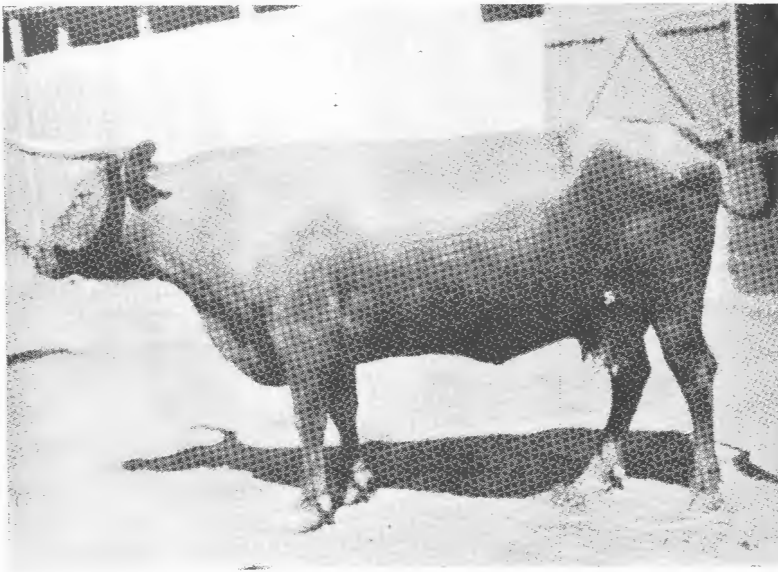


FIG. 24.—Group A: Cow 3599.
Date: 8.11.42.
Age: 14 years 8 months.
Weight: 1,151 lb.

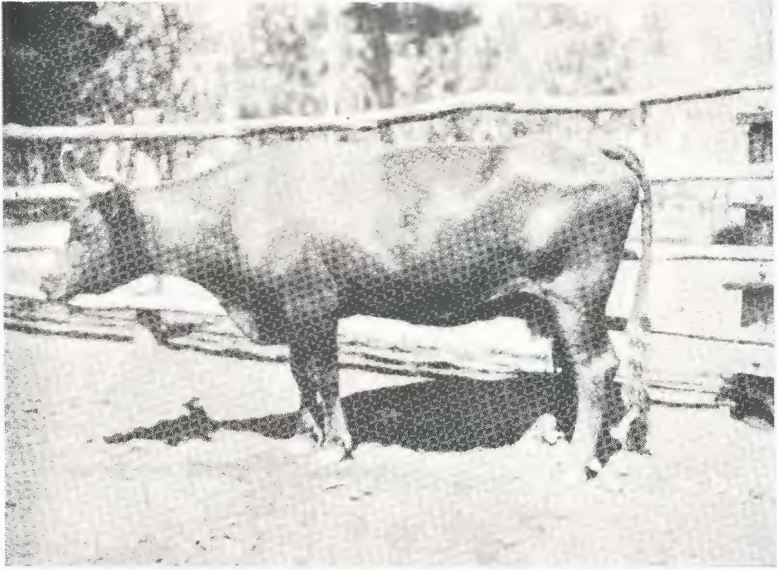


FIG. 25.—Group C: Cow 3617.
Date: 8.11.42.
Age: 14 years 8 months.
Weight: 1,030 lb.

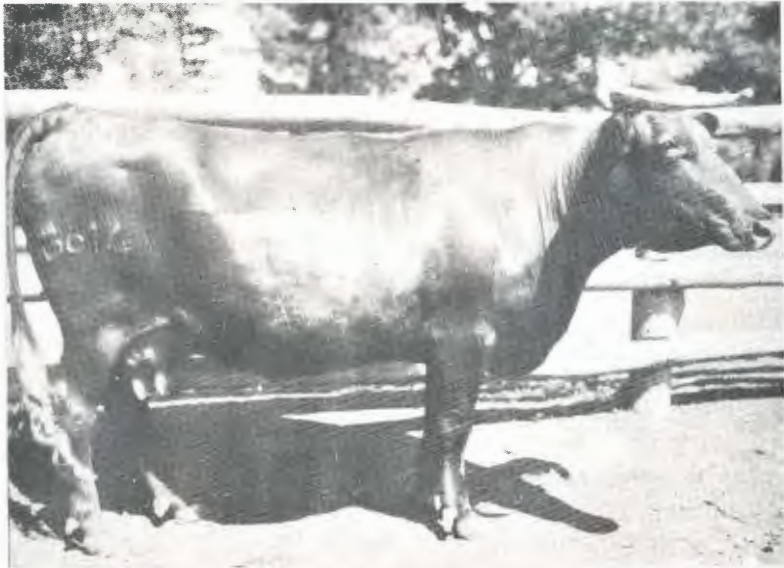


FIG. 26.—Group C: Cow 3614.
Date: 8.11.42.
Age: 14 years 8 months.
Weight: 1,102 lb.