

**The new institutions: artist-run participative platforms  
and initiatives in South Africa**

By

ROBYN COOK

Thesis submitted in partial fulfilment of  
the requirements for the degree

DPHIL (FA), Option 1: Thesis

In the

DEPARTMENT OF VISUAL ARTS  
FACULTY OF HUMANITIES  
UNIVERSITY OF PRETORIA  
AUGUST 2016

VOLUME TWO

Promoter: Prof. B Schmahmann

## LIST OF FIGURES

Figure 1: Graciela Carnevale, <i>Acción del Encierro</i> , 1968.	4
Figure 2: Graciela Carnevale, <i>Acción del Encierro</i> , 1968.	5
Figure 3: Allan Kaprow, <i>18 Happenings in 6 Parts</i> , 1959.	6
Figure 4: Donna Kukama & Naadira Patel, <i>Café Exchange</i> , 2012.	7
Figure 5: Donna Kukama & Naadira Patel, <i>Café Exchange</i> , 2012.	8
Figure 6: Donna Kukama & Naadira Patel, <i>Café Exchange</i> , 2012.	8
Figure 7: Santiago Sierra, <i>160 cm Line Tattooed on Four People</i> , 2002	9
Figure 8: Suzanne Lacy, <i>The Roof is on Fire</i> , 1993-1994	9
Figure 9: Gugulective, 'Ityala Aliboli/Debt Don't Rot', 2010	10
Figure 10: Gugulective, 'Ityala Aliboli/Debt Don't Rot', 2010	10
Figure 11: Alphabet Zoo, 'Johannesburg Street (Alphabet Zoo Research Project)', 2014	11
Figure 12: Alphabet Zoo, 'Johannesburg Street (Alphabet Zoo Research Project)', 2014	11
Figure 13: Alphabet Zoo, 'Johannesburg Street (Alphabet Zoo Research Project)', 2014	12
Figure 14: Alphabet Zoo, 'Johannesburg Street (Alphabet Zoo Research Project)', 2014	12
Figure 15: Alphabet Zoo, 'Johannesburg Street (Alphabet Zoo Research Project)', 2014	13
Figure 16: Bianca Baldi, 'Him & Her', 2008	13
Figure 17: Douglas Gimberg and Christian Nerf, 'Carpentry 101', 2007	14
Figure 18: Brendon Bussy, 'Drawing Machine', 2008	14
Figure 19: Interior of the new Blank Projects gallery in Woodstock at the opening of Abri de Swardt's 'To Walk On Water', 2011	15
Figure 20: Street view of the King Kong Building, New Doornfontein	15
Figure 21: Opening of Ahmet Ögüt's 'We Won't Leave' at the Parking Gallery, 2014	16
Figure 22: <i>Things We Count</i> (2008) from the opening of Ahmet Ögüt's 'We Won't Leave' at the Parking Gallery, 2014	16
Figure 23: The opening of Ahmet Ögüt's 'We Won't Leave' at the Parking Gallery, 2014	17
Figure 24: Dorothee Kreutzfeldt, 'Adversary', 2006	17
Figure 25: Simon Gush, <i>Red (Mandela Car)</i> , 2014	18
Figure 26: Simon Gush, <i>Red (sleep-in strike beds)</i> , 2014	18
Figure 27: Sober & Lonely Institute for Contemporary Art and Bas Schevers, 'Failure House', 2011	19
Figure 28: Bas Schevers, <i>Failure Portfolio</i> , 2011	19
Figure 29: Bas Schevers, <i>Visiting Ronald Detige</i> , 2011	20
Figure 30: Bas Schevers, <i>Skateboard Contest</i> , 2011	20
Figure 31: Sober & Lonely Institute for Contemporary Art and Bas Schevers, 'Failure House', 2011	21
Figure 32: Sober & Lonely Institute for Contemporary Art and Machine Project,	

<i>The Inaugural Sober &amp; Lonely Running Club Run, 2012</i>	21
Figure 33: Sober & Lonely Institute for Contemporary Art and Machine Project, <i>The Inaugural Sober &amp; Lonely Running Club Run, 2012</i>	22
Figure 34: Sober & Lonely Institute for Contemporary Art and Machine Project, <i>The Inaugural Sober &amp; Lonely Running Club Run, 2012</i>	22
Figure 35: Sober & Lonely Institute for Contemporary Art and Machine Project, <i>The Inaugural Sober &amp; Lonely Running Club Run, 2012</i>	23
Figure 36: Sober & Lonely Institute for Contemporary Art and Machine Project, <i>The Inaugural Sober &amp; Lonely Running Club Run, 2012</i>	23
Figure 37: Sober & Lonely Institute for Contemporary Art, 'FUTURES', 2014	24
Figure 38: Sober & Lonely Institute for Contemporary Art, 'FUTURES', 2014	24
Figure 39: Sober & Lonely Institute for Contemporary Art, 'FUTURES', 2014	25
Figure 40: Sober & Lonely Institute for Contemporary Art, 'FUTURES', 2014	25
Figure 41: Sober & Lonely Institute for Contemporary Art, 'FUTURES', 2014	26
Figure 42: Sober & Lonely Institute for Contemporary Art, 'FUTURES', 2014	26
Figure 43: Sober & Lonely Institute for Contemporary Art, 'FUTURES', 2014	27
Figure 44: Nancy Holt, <i>Up and Under</i> , 1998	27
Figure 45: Nancy Holt, <i>Up and Under</i> , 1998	28
Figure 46: Nancy Holt, <i>Up and Under</i> , 1998	28
Figure 47: Nancy Holt, <i>Up and Under</i> , 1998	29
Figure 48: Sober & Lonely, <i>The Nancy Holt Teleportation Device</i> , 2013	29
Figure 49: Sober & Lonely, <i>The Nancy Holt Teleportation Device</i> , 2013	30
Figure 50: Sober & Lonely, <i>The Nancy Holt Teleportation Device</i> , 2013	30
Figure 51: Sober & Lonely, <i>The Nancy Holt Teleportation Device</i> , 2013	31
Figure 52: Sober & Lonely, <i>The Nancy Holt Teleportation Device</i> , 2013	31
Figure 53: Sober & Lonely, <i>The Nancy Holt Teleportation Device</i> , 2013	32
Figure 54: Sober & Lonely website, <i>Starz</i> , 2015	32
Figure 55: Sober & Lonely website, <i>Starz</i> , 2015	33
Figure 56: Sober & Lonely website, <i>Starz</i> , 2015	33
Figure 57: Sober & Lonely website, <i>SLLSFFM</i> , 2015	34
Figure 58: Sober & Lonely website, <i>MIAC</i> , 2015	34
Figure 59: <i>Metropolar meets the Children at Keleketla!</i> , 2016	35
Figure 60: <i>Metropolar meets the Children at Keleketla!</i> , 2016	35
Figure 61: <i>Metropolar meets the Children at Keleketla!</i> , 2016	36
Figure 62: 'Skaftien #1' at Keleketla!, 2011	36
Figure 63: The Brother Moves On performing at 'Skaftien #1' at Keleketla!, 2011	37



Figure 1: Graciela Carnevale, *Acción del Encierro*, 1968.  
Performance documentation, photograph  
Rosario, Argentina



Figure 2: Graciela Carnevale, *Acción del Encierro*, 1968.  
Performance documentation, photograph  
Rosario, Argentina

18 HAPPENINGS  
IN SIX PARTS  
BY ALLAN KAPROW

---

THE REUBEN GALLERY  
61 4th AVE., N.Y.C.  
OCT. 4,6,7,8,9,10--8:30 p.m.

---

CAST OF PARTICIPANTS

Allan Kaprow - who  
speaks and plays a  
musical instrument

Rosalyn Montague -  
who speaks and moves

Shirley Prendergast -  
who moves and plays a  
musical instrument

Lucas Samaras - who  
speaks, plays a game  
and a musical instru-  
ment

Janet Weinberger -  
who moves and plays a  
musical instrument

Robert Whitman - who  
moves, speaks and  
plays a game

Sam Francis, Red Grooms,  
Dick Higgins, Lester  
Johnson, Alfred Les-  
lie, Jay Milder, George  
Segal, Robert Thompson  
- each of whom paints

The visitors - who sit  
in various chairs

INSTRUCTIONS

The performance is divided into six  
parts. Each part contains three  
happenings which occur at once. The  
beginning and end of each will be  
signalled by a bell. At the end of  
the performance two strokes of the  
bell will be heard.

You have been given three cards.  
Be seated as they instruct you.  
That is, be sure to change your  
place for set three and for set  
five.

Between part one and part two there  
is a two minute interval. Remain  
seated.

Between part two and part three  
there is a fifteen minute interval.  
You may move about freely.

Between part three and part four  
there is a two minute interval  
when you will remain in your seats.

Between part four and part five  
there is a fifteen minute inter-  
val. You may move about.

Between part five and part six  
there is a two minute interval.  
Remain seated.

There will be no applause after  
each set. You may applaud after  
the sixth set if you wish, although  
there will be no "curtain call".

---

The visitors are please asked not to smoke at all in the loft. They  
are also asked not to leave the building during the longer intermis-  
sions.

Figure 3: Allan Kaprow, *18 Happenings in 6 Parts*, 1959.  
Documentation  
Reuben Gallery, New York, USA

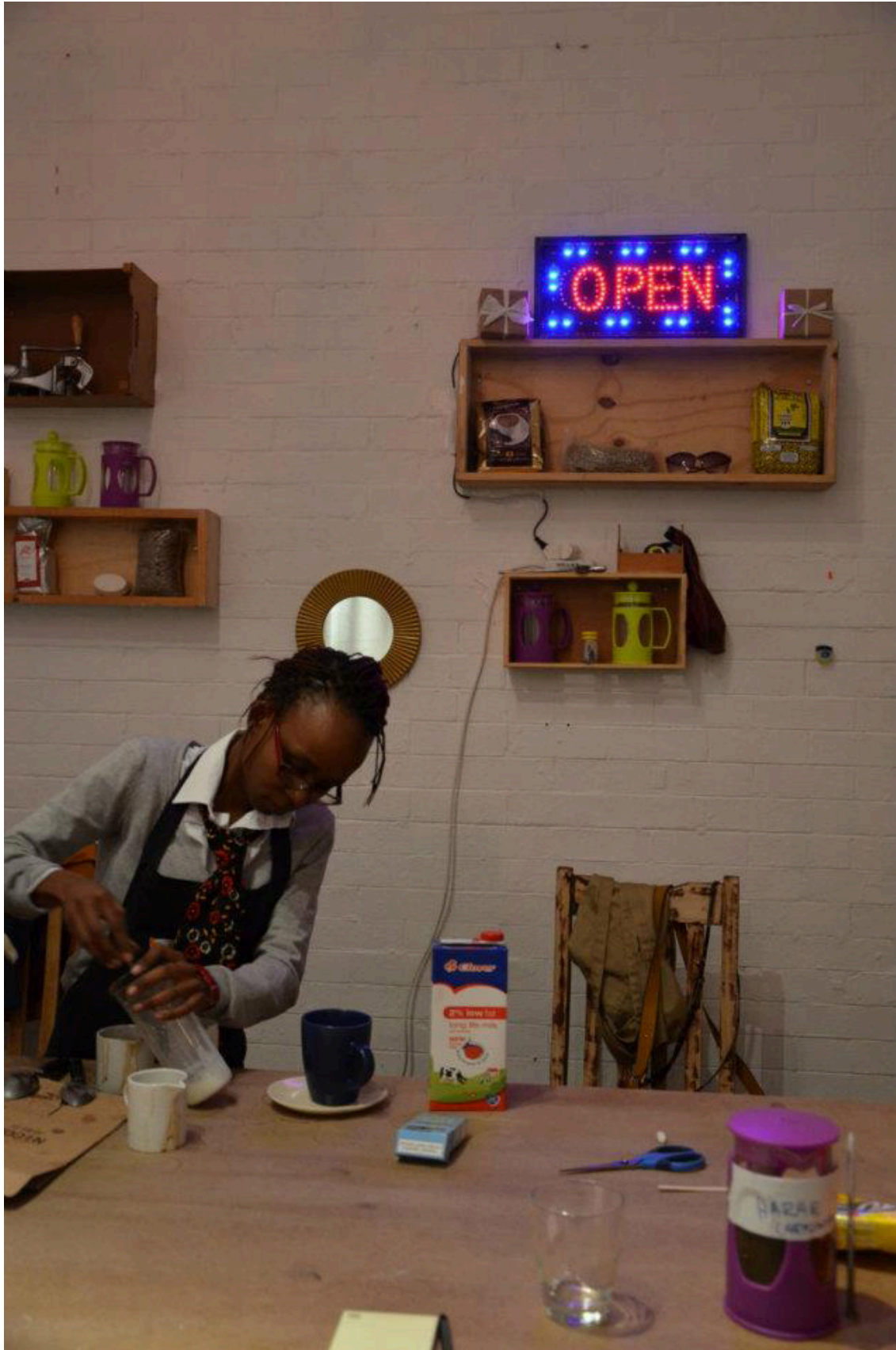


Figure 4: Donna Kukama & Naadira Patel, *Café Exchange*, 2012.  
Documentation, photograph  
Johannesburg, South Africa



Figure 5: Donna Kukama & Naadira Patel, *Café Exchange*, 2012.  
Documentation, photograph  
Johannesburg, South Africa



Figure 6: Donna Kukama & Naadira Patel, *Café Exchange*, 2012.  
Documentation, photograph  
Johannesburg, South Africa





Figure 7: Santiago Sierra, *160 cm Line Tattooed on Four People*, 2002  
Documentation, photograph  
El Gallo Arte Contemporáneo, Spain



Figure 8: Suzanne Lacy, *The Roof is on Fire*, 1993-1994  
Documentation, photograph  
Oakland, USA



Figure 9: Gugulective, 'Ityala Aliboli/Debt Don't Rot', 2010  
Installation, photograph  
Johannesburg, South Africa



Figure 10: Gugulective, 'Ityala Aliboli/Debt Don't Rot', 2010  
Installation, photograph  
Johannesburg, South Africa

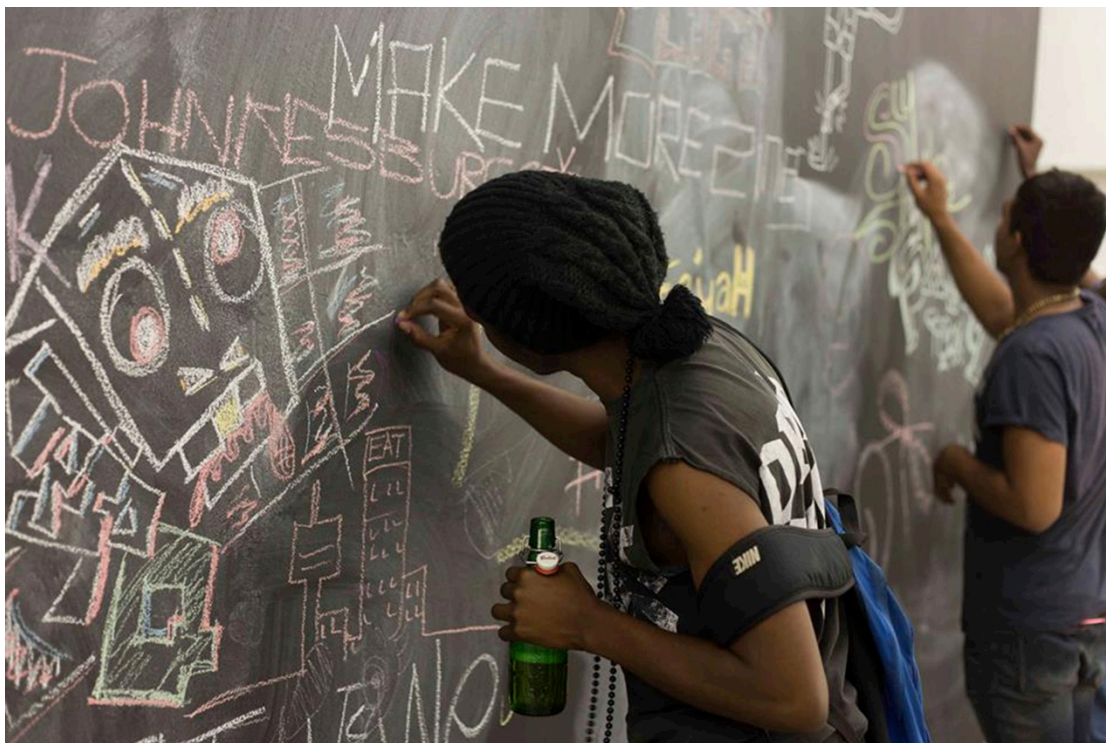


Figure 11: Alphabet Zoo, 'Johannesburg Street (Alphabet Zoo Research Project)', 2014  
Documentation, photograph  
Johannesburg, South Africa



Figure 12: Alphabet Zoo, 'Johannesburg Street (Alphabet Zoo Research Project)', 2014  
Documentation, photograph  
Johannesburg, South Africa



Figure 13: Alphabet Zoo, 'Johannesburg Street (Alphabet Zoo Research Project)', 2014  
Documentation, photograph  
Johannesburg, South Africa



Figure 14: Alphabet Zoo, 'Johannesburg Street (Alphabet Zoo Research Project)', 2014  
Documentation, photograph  
Johannesburg, South Africa



Figure 15: Alphabet Zoo, 'Johannesburg Street (Alphabet Zoo Research Project)', 2014  
Documentation, photograph  
Johannesburg, South Africa



Figure 16: Bianca Baldi, 'Him & Her', 2008  
Documentation, photograph  
Cape Town, South Africa  
© Bianca Baldi. Courtesy Bianca Baldi



Figure 17: Douglas Gimberg and Christian Nerf, 'Carpentry 101', 2007  
Documentation, photograph  
Cape Town, South Africa

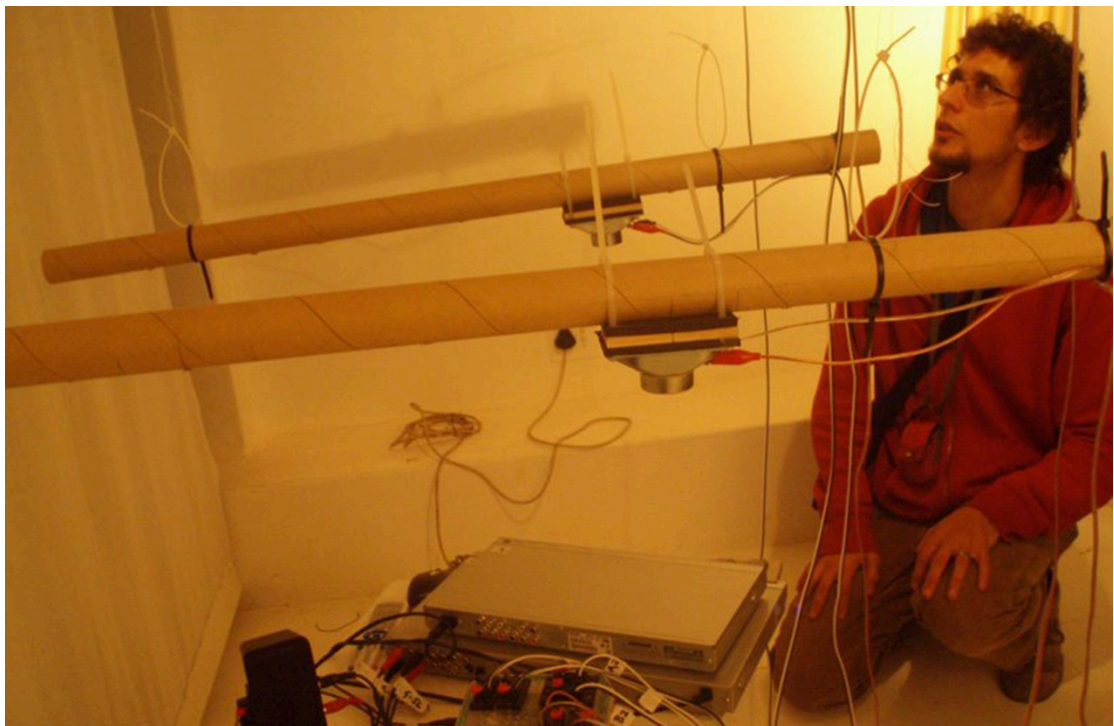


Figure 18: Brendon Bussy, 'Drawing Machine', 2008  
Documentation, photograph  
Cape Town, South Africa



Figure 19: Interior of the new Blank Projects gallery in Woodstock at the opening of Abri de Swardt's 'To Walk On Water', 2011  
Documentation, photograph  
Cape Town, South Africa



Figure 20: Street view of the King Kong Building, New Doornfontein  
Documentation, photograph  
Johannesburg, South Africa



Figure 21: Opening of Ahmet Ögüt's 'We Won't Leave' at the Parking Gallery, 2014  
Documentation, photograph  
Johannesburg, South Africa  
© Ahmet Ögüt. Courtesy Parking Gallery Johannesburg



Figure 22: *Things We Count* (2008) from the opening of Ahmet Ögüt's 'We Won't Leave' at the Parking Gallery, 2014  
Documentation of video installation, photograph  
Johannesburg, South Africa  
© Ahmet Ögüt. Courtesy Parking Gallery Johannesburg





Figure 23: The opening of Ahmet Ögüt's 'We Won't Leave' at the Parking Gallery, 2014  
Documentation of event, photograph  
Johannesburg, South Africa  
© Ahmet Ögüt. Courtesy Parking Gallery Johannesburg

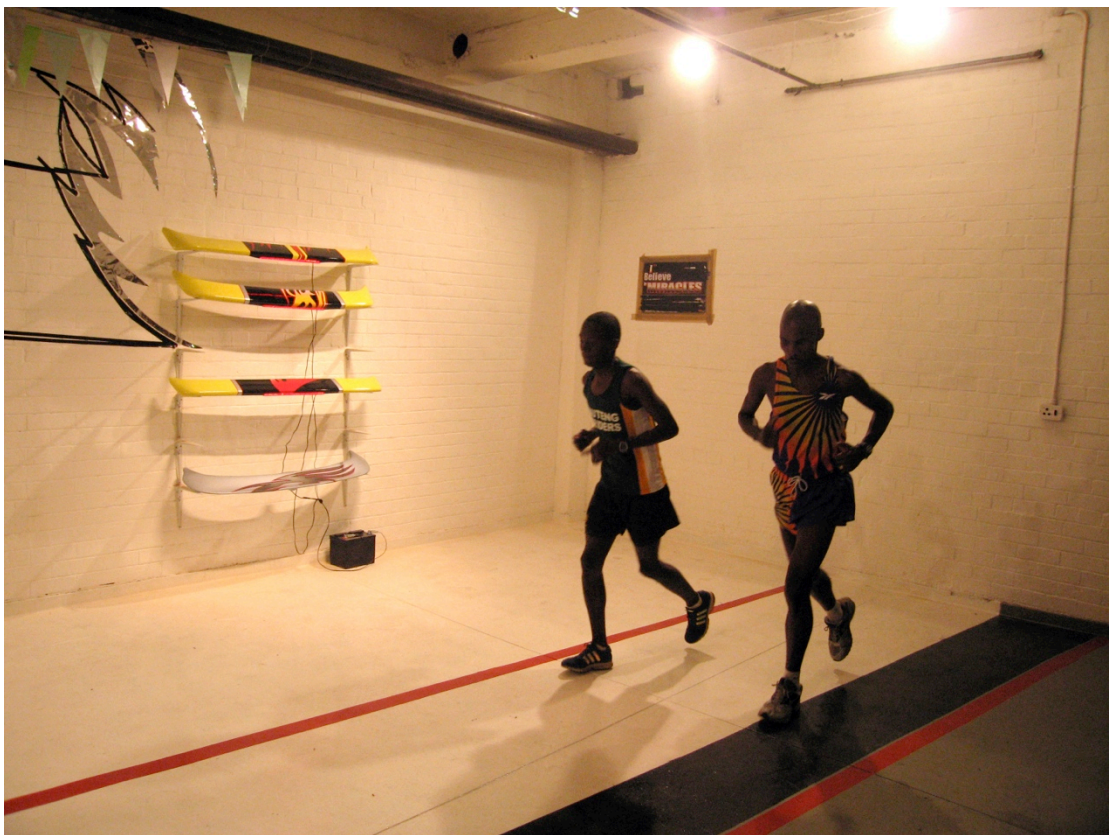


Figure 24: Dorothee Kreutzfeldt, 'Adversary', 2006  
Documentation, photograph  
Parking Gallery Johannesburg  
© Dorothee Kreutzfeldt. Courtesy Parking Gallery Johannesburg



Figure 25: Simon Gush, *Red (Mandela Car)*, 2014  
Documentation, photograph  
Goethe-Institut, Johannesburg, South Africa  
© Simon Gush. Courtesy Stevenson Cape Town and Johannesburg



Figure 26: Simon Gush, *Red (sleep-in strike beds)*, 2014  
Documentation, photograph  
Goethe-Institut, Johannesburg, South Africa  
© Simon Gush. Courtesy Stevenson Cape Town and Johannesburg



Figure 27: Sober & Lonely Institute for Contemporary Art and Bas Schevers, 'Failure House', 2011  
Documentation, photograph  
Sober & Lonely, Johannesburg, South Africa  
© Bas Schevers and Sober & Lonely. Courtesy Bas Schevers and Sober & Lonely



Figure 28: Bas Schevers, *Failure Portfolio*, 2011  
Video still  
© Bas Schevers and Sober & Lonely. Courtesy Bas Schevers



Figure 29: Bas Schevers, *Visiting Ronald Detige*, 2011  
Video still  
© Bas Schevers and Sober & Lonely. Courtesy Bas Schevers



Figure 30: Bas Schevers, *Skateboard Contest*, 2011  
Video still  
© Bas Schevers and Sober & Lonely. Courtesy Bas Schevers



Figure 31: Sober & Lonely Institute for Contemporary Art and Bas Schevers, 'Failure House', 2011  
Documentation, photograph  
Sober & Lonely, Johannesburg, South Africa  
© Bas Schevers and Sober & Lonely. Courtesy Bas Schevers and Sober & Lonely

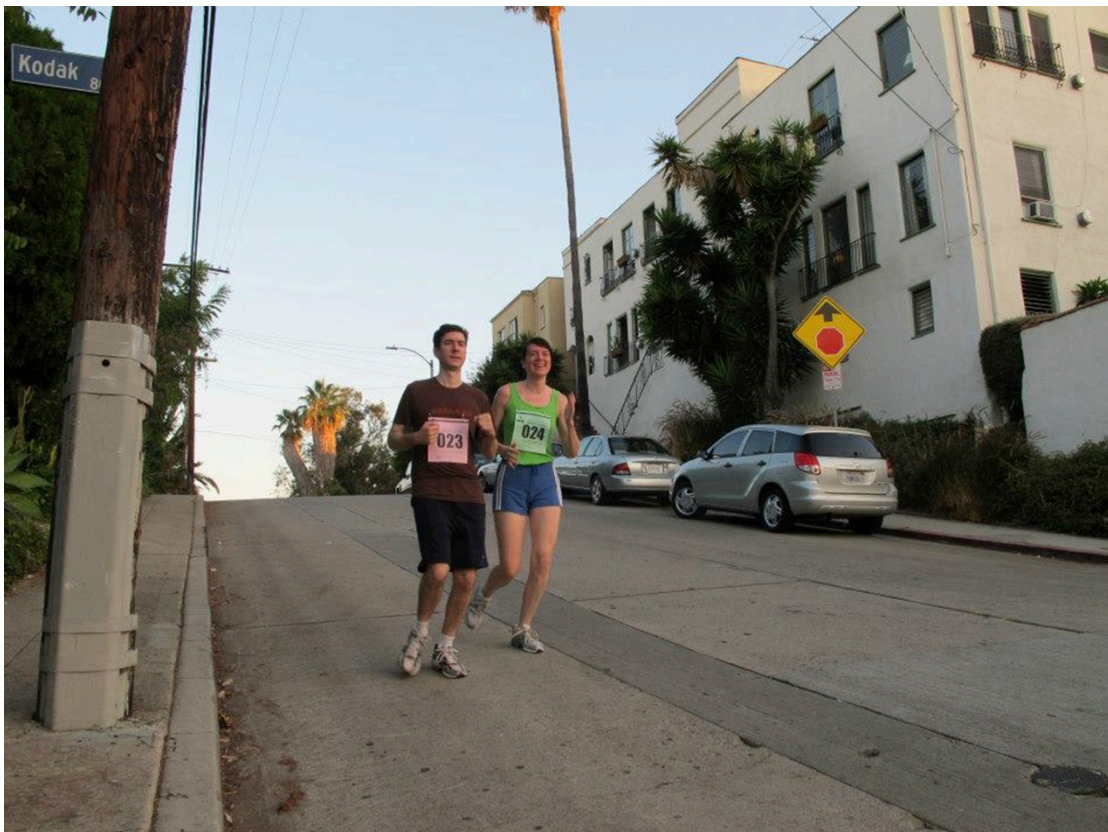


Figure 32: Sober & Lonely Institute for Contemporary Art and Machine Project, *The Inaugural Sober & Lonely Running Club Run*, 2012  
Documentation, photograph  
Los Angeles, USA  
© Sober & Lonely. Courtesy Sober & Lonely and Han Salzman



Figure 33: Sober & Lonely Institute for Contemporary Art and Machine Project, *The Inaugural Sober & Lonely Running Club Run*, 2012  
Documentation, photograph  
Los Angeles, USA  
© Sober & Lonely. Courtesy Sober & Lonely and Han Salzman



Figure 34: Sober & Lonely Institute for Contemporary Art and Machine Project, *The Inaugural Sober & Lonely Running Club Run*, 2012  
Documentation, photograph  
Los Angeles, USA  
© Sober & Lonely. Courtesy Sober & Lonely and Han Salzman



Figure 35: Sober & Lonely Institute for Contemporary Art and Machine Project, *The Inaugural Sober & Lonely Running Club Run*, 2012  
Documentation, photograph  
Los Angeles, USA  
© Sober & Lonely. Courtesy Sober & Lonely and Han Salzman



Figure 36: Sober & Lonely Institute for Contemporary Art and Machine Project, *The Inaugural Sober & Lonely Running Club Run*, 2012  
Documentation, photograph  
Los Angeles, USA  
© Sober & Lonely. Courtesy Sober & Lonely and Han Salzman

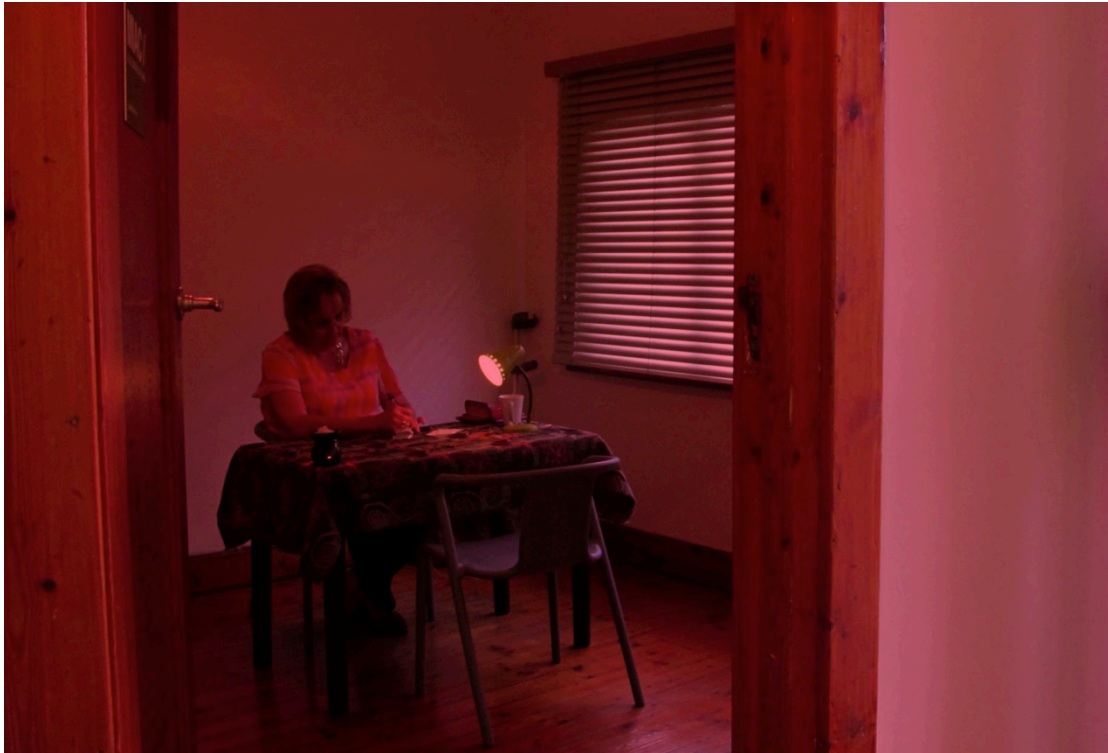


Figure 37: Sober & Lonely Institute for Contemporary Art, 'FUTURES', 2014  
Documentation, photograph  
Johannesburg, South Africa  
© Sober & Lonely.



Figure 38: Sober & Lonely Institute for Contemporary Art, 'FUTURES', 2014  
Documentation, photograph  
Johannesburg, South Africa  
© Sober & Lonely. Courtesy Sober & Lonely.





Figure 39: Sober & Lonely Institute for Contemporary Art, 'FUTURES', 2014  
Documentation, photograph  
Johannesburg, South Africa  
© Sober & Lonely. Courtesy Sober & Lonely.

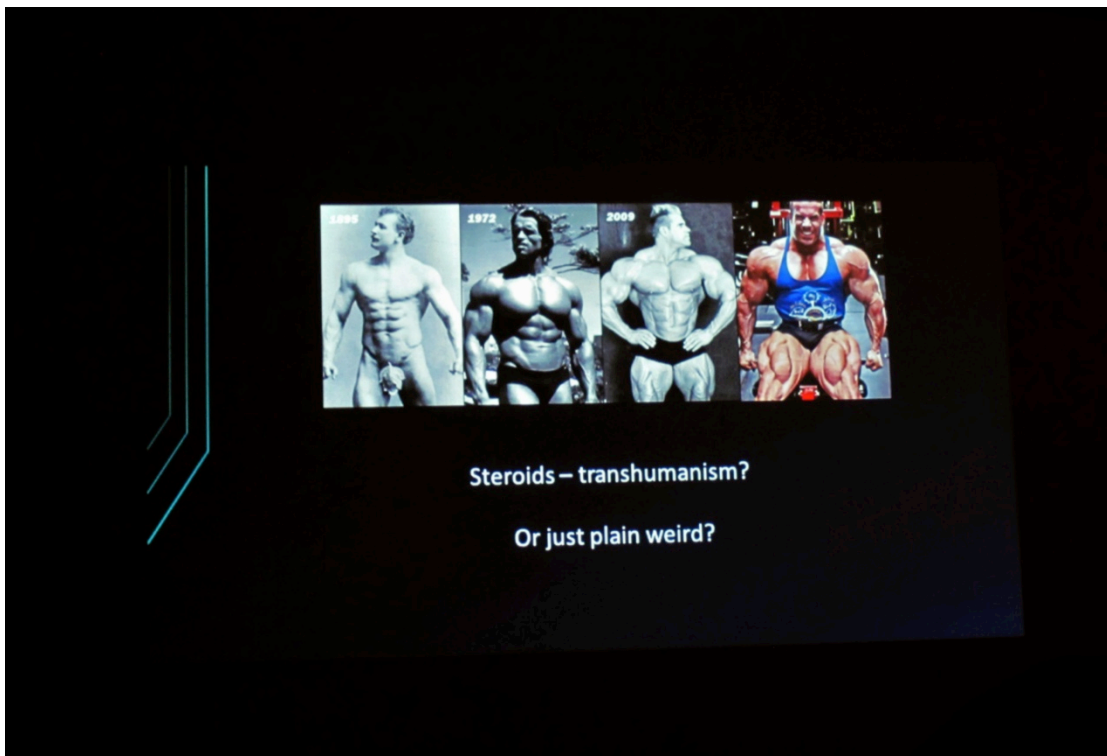


Figure 40: Sober & Lonely Institute for Contemporary Art, 'FUTURES', 2014  
Documentation, photograph  
Johannesburg, South Africa  
© Sober & Lonely. Courtesy Sober & Lonely.



Figure 41: Sober & Lonely Institute for Contemporary Art, 'FUTURES', 2014  
Documentation, photograph  
Johannesburg, South Africa  
© Sober & Lonely. Courtesy Sober & Lonely.



Figure 42: Sober & Lonely Institute for Contemporary Art, 'FUTURES', 2014  
Documentation, photograph  
Johannesburg, South Africa  
© Sober & Lonely. Courtesy Sober & Lonely.



Figure 43: Sober & Lonely Institute for Contemporary Art, 'FUTURES', 2014  
Documentation, photograph  
Johannesburg, South Africa  
© Sober & Lonely. Courtesy Sober & Lonely.



Figure 44: Nancy Holt, *Up and Under*, 1998  
Documentation, photograph  
Pinsiö, Finland



Figure 45: Nancy Holt, *Up and Under*, 1998  
Documentation, photograph  
Pinsiö, Finland  
© Sober & Lonely. Courtesy Sober & Lonely.



Figure 46: Nancy Holt, *Up and Under*, 1998  
Documentation, photograph  
Pinsiö, Finland  
© Sober & Lonely. Courtesy Sober & Lonely.



Figure 47: Nancy Holt, *Up and Under*, 1998  
 Documentation (vertical centre), photograph  
 Pinsiö, Finland  
 © Sober & Lonely. Courtesy Sober & Lonely.

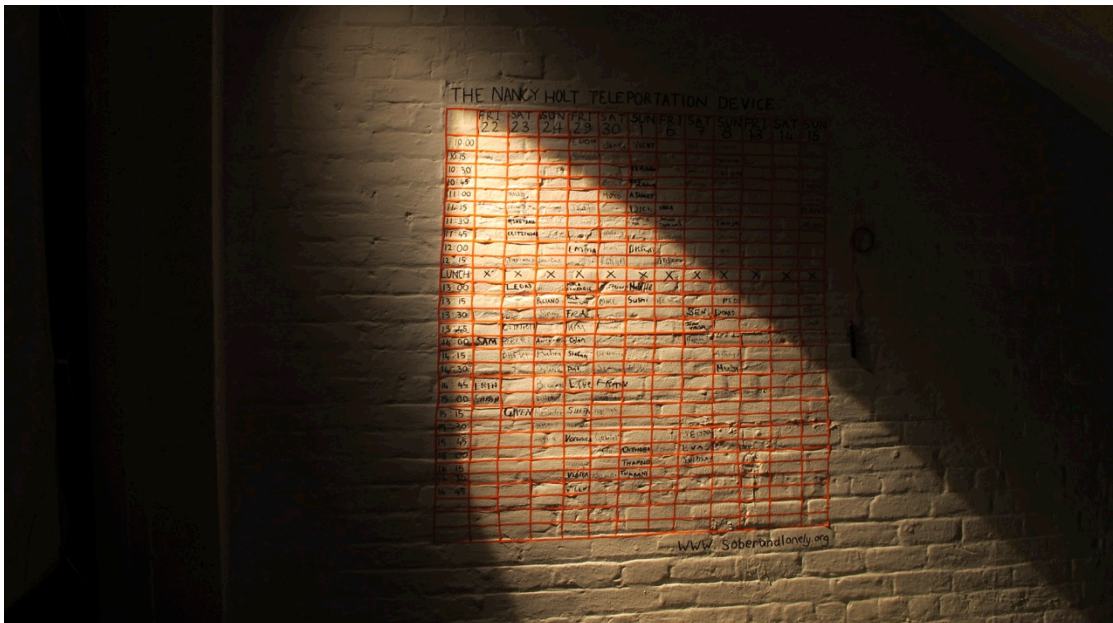


Figure 48: Sober & Lonely, *The Nancy Holt Teleportation Device*, 2013  
 Documentation, photograph  
 Johannesburg, South Africa  
 © Sober & Lonely. Courtesy Sober & Lonely.



Figure 49: Sober & Lonely, *The Nancy Holt Teleportation Device*, 2013  
Documentation, photograph  
Johannesburg, South Africa  
© Sober & Lonely. Courtesy Sober & Lonely.



Figure 50: Sober & Lonely, *The Nancy Holt Teleportation Device*, 2013  
Documentation, photograph  
Johannesburg, South Africa  
© Sober & Lonely. Courtesy Sober & Lonely.



Figure 51: Sober & Lonely, *The Nancy Holt Teleportation Device*, 2013  
Documentation, photograph  
Johannesburg, South Africa  
© Sober & Lonely. Courtesy Sober & Lonely.

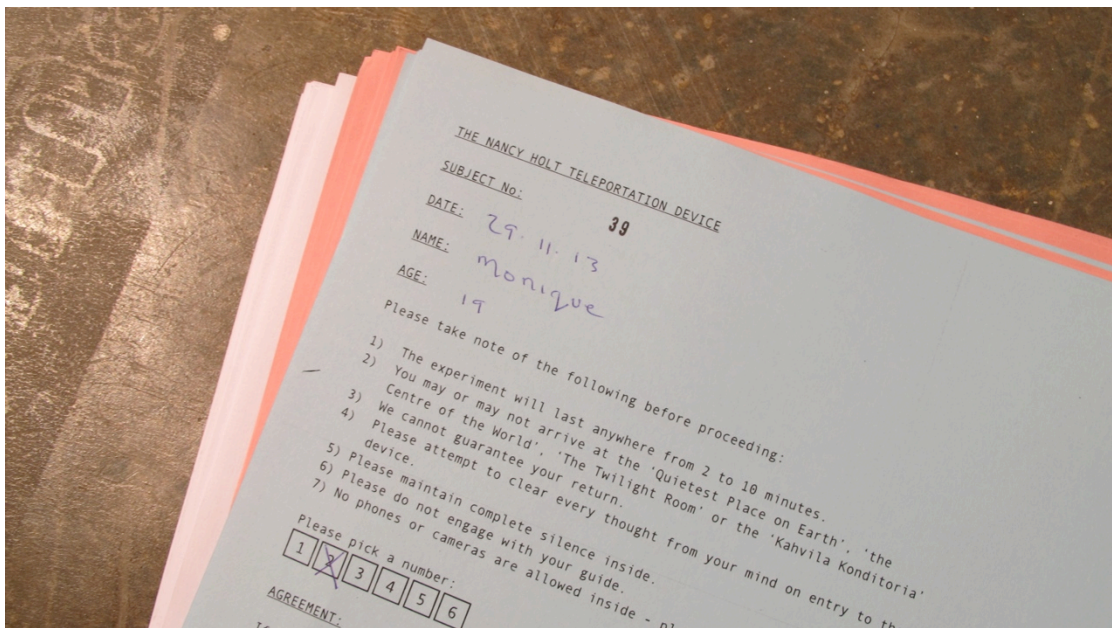


Figure 52: Sober & Lonely, *The Nancy Holt Teleportation Device*, 2013  
Documentation, photograph  
Johannesburg, South Africa  
© Sober & Lonely. Courtesy Sober & Lonely.

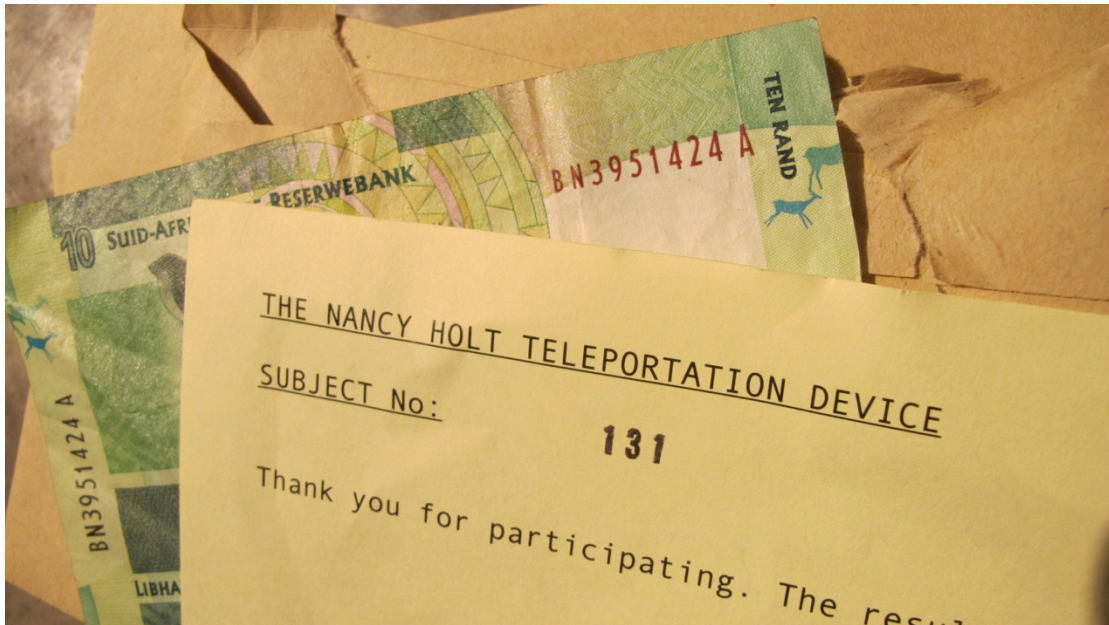


Figure 53: Sober & Lonely, *The Nancy Holt Teleportation Device*, 2013  
Documentation, photograph  
Johannesburg, South Africa  
© Sober & Lonely. Courtesy Sober & Lonely.

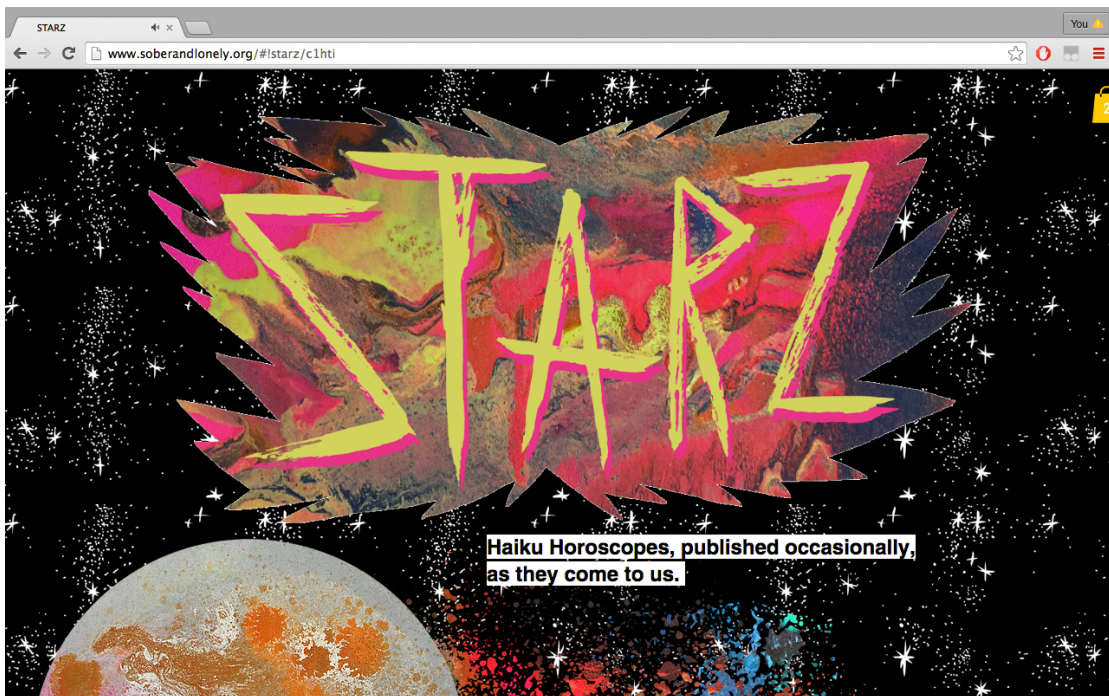


Figure 54: Sober & Lonely website, *Starz*, 2015  
Screenshot  
© Sober & Lonely and Shaun Hill. Courtesy Sober & Lonely.



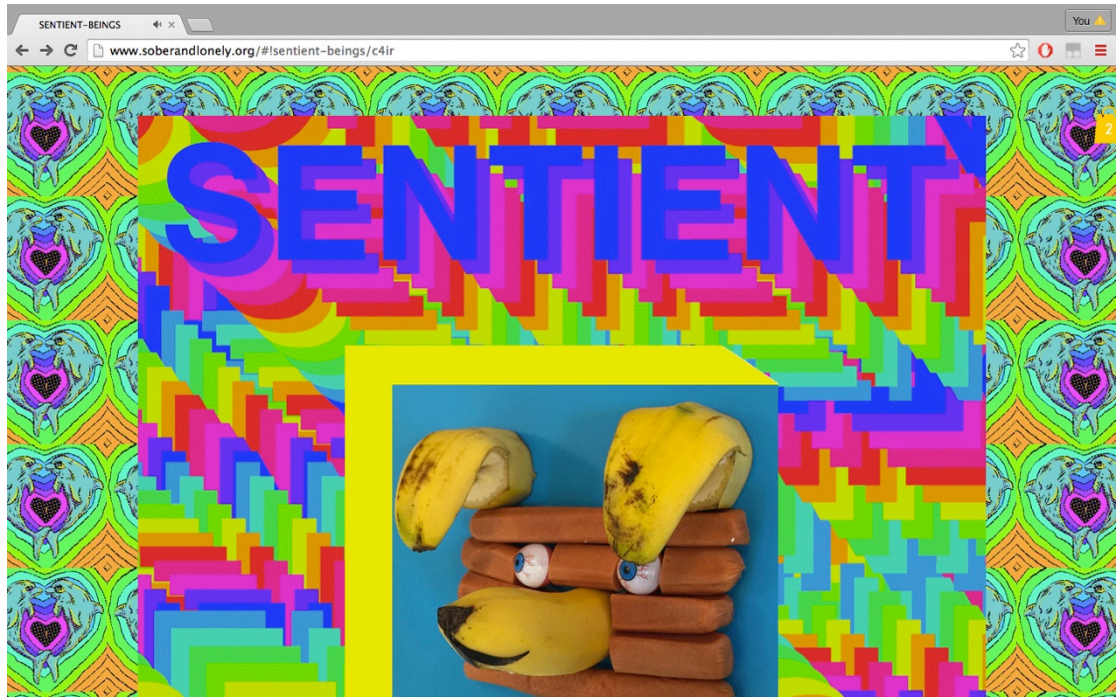


Figure 55: Sober & Lonely website, *Starz*, 2015  
Screenshot  
© Sober & Lonely and Shaun Hill. Courtesy Sober & Lonely.



Figure 56: Sober & Lonely website, *Starz*, 2015  
Screenshot  
© Sober & Lonely and Shaun Hill. Courtesy Sober & Lonely.

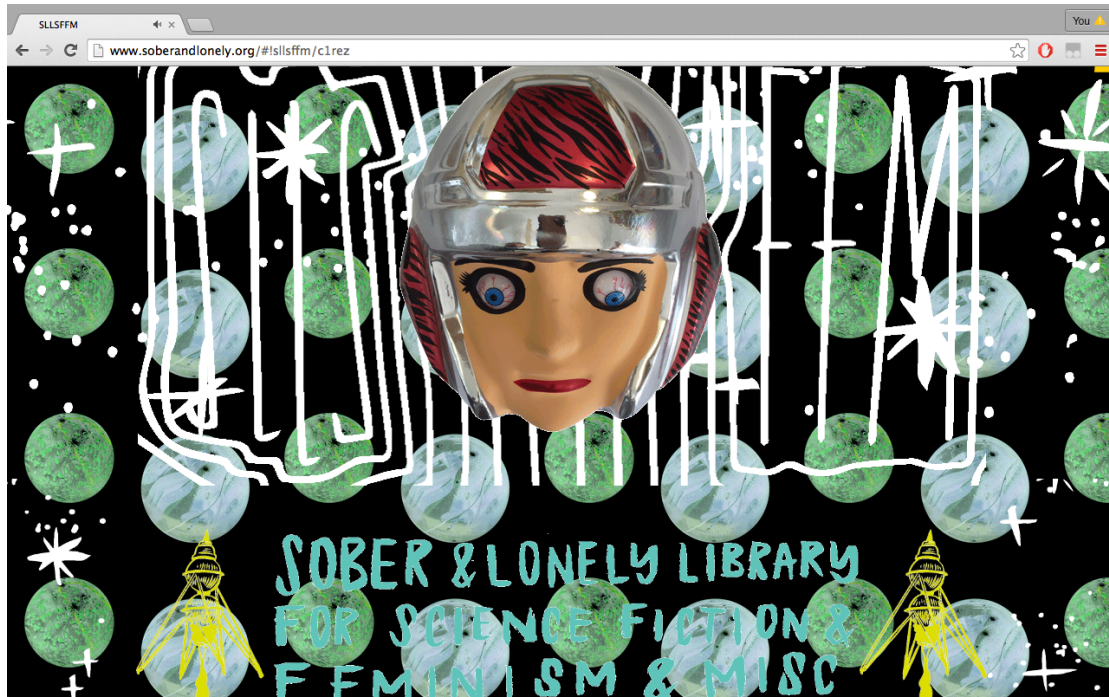


Figure 57: Sober & Lonely website, *SLLSFFM*, 2015  
Screenshot  
© Sober & Lonely and Shaun Hill. Courtesy Sober & Lonely.



Figure 58: Sober & Lonely website, *MIAC*, 2015  
Screenshot  
© Sober & Lonely and Shaun Hill. Courtesy Sober & Lonely.



Figure 59: *Metropolar meets the Children at Keleketla!*, 2016  
Documentation, photograph  
Johannesburg, South Africa



Figure 60: *Metropolar meets the Children at Keleketla!*, 2016  
Documentation, photograph  
Johannesburg, South Africa



Figure 61: *Metropolar meets the Children* at Keleketla!, 2016  
Documentation, photograph  
Johannesburg, South Africa

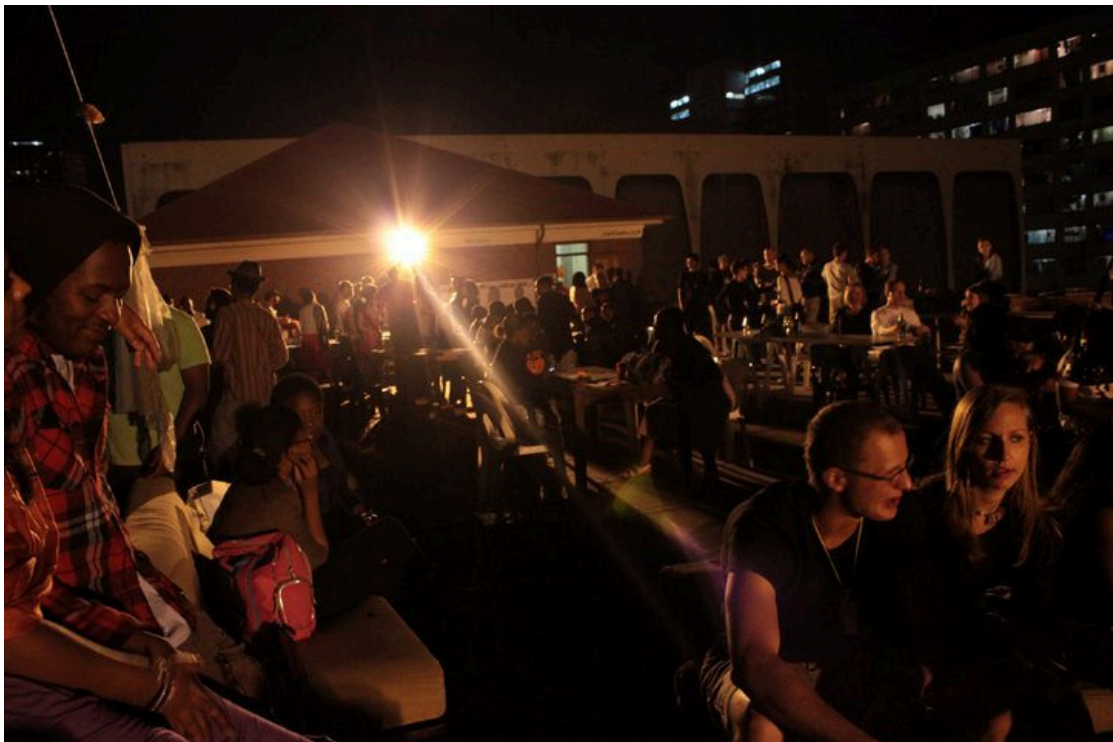


Figure 62: 'Skaftien #1' at Keleketla!, 2011  
Documentation, photograph  
Johannesburg, South Africa



Figure 63: The Brother Moves On performing at 'Skaftien #1' at Keleketla!, 2011  
Documentation, photograph  
Johannesburg, South Africa

## LIST OF SOURCES

Figure 1: Graciela Carnevale, *Acción del Encierro*, 1968.

At: <http://residencyunlimited.org/programs/ru-talk-emily-bercir-zimmerman-held-in-trust/>. Accessed 16/08/2015.

Figure 2: Graciela Carnevale, *Acción del Encierro*, 1968.

At: <http://www.reactfeminism.org>. Accessed 27/08/2014.

Figure 3: Allan Kaprow, *18 Happenings in 6 Parts*, 1959.

At: <https://www.studyblue.com/notes/note/n/4-scoring-the-work-of-art-happening--event-/deck/5969948>. Accessed 13/08/2014.

Figure 4: Donna Kukama & Naadira Patel, *Café Exchange*, 2012.

At: [https://m.facebook.com/events/323339204406591?\\_ft\\_](https://m.facebook.com/events/323339204406591?_ft_). Accessed: 23/09/2014.

Figure 5: Donna Kukama & Naadira Patel, *Café Exchange*, 2012.

At: [https://m.facebook.com/events/323339204406591?\\_ft\\_](https://m.facebook.com/events/323339204406591?_ft_). Accessed: 09/23/2014.

Figure 6: Donna Kukama & Naadira Patel, *Café Exchange*, 2012.

At: [https://m.facebook.com/events/323339204406591?\\_ft\\_](https://m.facebook.com/events/323339204406591?_ft_). Accessed: 23/09/2014.

Figure 7: Santiago Sierra, *160 cm Line Tattooed on Four People*, 2002.

At: <http://www.tate.org.uk/art/artworks/sierra-160-cm-line-tattooed-on-4-people-el-gallo-arte-contemporaneo-salamanca-spain-t11852>. Accessed: 10/20/2014

Figure 8: Suzanne Lacy, *The Roof is on Fire*, 1993-1994.

At: <http://www.suzannelacy.com/the-oakland-projects/> 1997. Accessed 11/02/2014.

Figure 9: Gugulective, 'Ityala Aliboli/Debt Don't Rot', 2010.

At: <http://www.goodman-gallery.com/artists/gugulective>. Accessed 12/08/2014.

Figure 10: Gugulective, 'Ityala Aliboli/Debt Don't Rot', 2010.

At: <http://www.goodman-gallery.com/artists/gugulective>. Accessed 12/08/2014.

Figure 11: Alphabet Zoo, 'Johannesburg Street (Alphabet Zoo Research Project)', 2014.

At: <http://alphabetzoosa.tumblr.com/>. Accessed 12/14/2014.

Figure 12: Alphabet Zoo, 'Johannesburg Street (Alphabet Zoo Research Project)', 2014.

At: <http://alphabetzoosa.tumblr.com/>. Accessed 12/14/2014.

Figure 13: Alphabet Zoo, 'Johannesburg Street (Alphabet Zoo Research Project)', 2014.

At: <http://alphabetzoosa.tumblr.com/>. Accessed 12/14/2014.

Figure 14: Alphabet Zoo, 'Johannesburg Street (Alphabet Zoo Research Project)', 2014.

At: <http://alphabetzoosa.tumblr.com/>. Accessed 14/12/2014.

Figure 15: Alphabet Zoo, 'Johannesburg Street (Alphabet Zoo Research Project)', 2014.

At: <http://alphabetzoosa.tumblr.com/>. Accessed 14/12/2014.

Figure 16: Bianca Baldi, *Him & Her*, 2008.

© Bianca Baldi. Courtesy Bianca Baldi.

Figure 17: Douglas Gimberg & Christian Nerf, 'Carpentry 101', 2007.

At: <http://artheat.net/2007/08/carpentry-101-end.html>. Accessed 13/12/2014.

Figure 18: Brendon Bussy, 'Drawing Machine', 2008.

At: [http://blankprojects.blogspot.com/2008\\_05\\_01\\_archive.html](http://blankprojects.blogspot.com/2008_05_01_archive.html).

Accessed 13/12/2014.

Figure 19: Interior of the new Blank Projects gallery in Woodstock, at the opening of Abri de Swardt's 'To Walk On Water', 2011.

At: <http://www.blankprojects.com/>. Accessed 13/12/2014.

Figure 20: Street view of the King Kong Building, New Doornfontein

At: <https://goo.gl/maps/G1tvJ>. Accessed 15/04/2015.

Figure 21: Opening of Ahmet Ögüt's 'We Won't Leave' at the Parking Gallery, 2014.

© Ahmet Ögüt. Courtesy Parking Gallery Johannesburg.

Figure 22: *Things We Count*, 2008, from the opening of Ahmet Ögüt's 'We Won't Leave' at the Parking Gallery, 2014.

© Ahmet Ögüt. Courtesy Parking Gallery Johannesburg.

Figure 23: The opening of Ahmet Ögüt's 'We Won't Leave' at the Parking Gallery, 2014. © Ahmet Ögüt. Courtesy Parking Gallery Johannesburg.

Figure 24: Dorothee Kreutzfeldt, 'Adversary', 2006.

© Dorothee Kreutzfeldt. Courtesy Parking Gallery Johannesburg.

Figure 25: Simon Gush, *Red (Mandela Car)*, 2014.

© Simon Gush. Courtesy Stevenson Cape Town and Johannesburg.

Figure 26: Simon Gush, *Red (sleep-in strike beds)*, 2014.

© Simon Gush. Courtesy Stevenson Cape Town and Johannesburg.

Figure 27: Bas Schevers and Sober & Lonely, 'Failure House', 2011.

© Bas Schevers and Sober & Lonely.

Figure 28: Bas Schevers and Sober & Lonely, *Failure Portfolio*, 2011.

© Bas Schevers and Sober & Lonely. Courtesy Bas Schevers.

Figure 29: Bas Schevers and Sober & Lonely, *Visiting Ronald Detige*, 2011.

© Bas Schevers and Sober & Lonely. Courtesy Bas Schevers.

Figure 30: Bas Schevers and Sober & Lonely, *Skateboard Contest*, 2011.

© Bas Schevers and Sober & Lonely. Courtesy Bas Schevers.

Figure 31: Bas Schevers and Sober & Lonely, 2011.

© Bas Schevers and Sober & Lonely. Courtesy Bas Schevers and Sober & Lonely.

Figure 32: Sober & Lonely and Machine Project, *The Inaugural Sober & Lonely Running Club Run*, 2012.

© Sober & Lonely. Courtesy Sober & Lonely and Han Salzman.

Figure 33: Sober & Lonely and Machine Project, *The Inaugural Sober & Lonely Running Club Run*, 2012.

© Sober & Lonely. Courtesy Sober & Lonely and Han Salzman.

Figure 34: Sober & Lonely and Machine Project, *The Inaugural Sober & Lonely Running Club Run*, 2012.

© Sober & Lonely. Courtesy Sober & Lonely and Han Salzman.

Figure 35: Sober & Lonely and Machine Project, *The Inaugural Sober & Lonely Running Club Run*, 2012.

© Sober & Lonely. Courtesy Sober & Lonely and Han Salzman.

Figure 36: Sober & Lonely and Machine Project, *The Inaugural Sober & Lonely Running Club Run*, 2012.

© Sober & Lonely. Courtesy Sober & Lonely and Han Salzman.

Figure 37: Sober & Lonely, 'FUTURES', 2014.

© Sober & Lonely. Courtesy Sober & Lonely.

Figure 38: Sober & Lonely, 'FUTURES', 2014.

© Sober & Lonely. Courtesy Sober & Lonely.

Figure 39: Sober & Lonely, 'FUTURES', 2014.

© Sober & Lonely. Courtesy Sober & Lonely.

Figure 40: Sober & Lonely, 'FUTURES', 2014.

© Sober & Lonely. Courtesy Sober & Lonely.

Figure 41: Sober & Lonely, 'FUTURES', 2014.

© Sober & Lonely. Courtesy Sober & Lonely.

Figure 42: Sober & Lonely, 'FUTURES', 2014.

© Sober & Lonely. Courtesy Sober & Lonely.

Figure 43: Sober & Lonely, 'FUTURES', 2014.

© Sober & Lonely. Courtesy Sober & Lonely.

Figure 44: Nancy Holt, *Up and Under*, 1998.

At: <http://www.strataproject.org/nancy-holt.html>. Accessed 13/04/2014.



Figure 44: Nancy Holt, *Up and Under*, 1998.

© Sober & Lonely. Courtesy Sober & Lonely

Figure 45: Nancy Holt, *Up and Under*, 1998.

© Sober & Lonely. Courtesy Sober & Lonely.

Figure 46: Nancy Holt, *Up and Under*, 1998.

© Sober & Lonely. Courtesy Sober & Lonely.

Figure 47: Nancy Holt, *Up and Under*, 1998.

© Sober & Lonely. Courtesy Sober & Lonely.

Figure 48: Sober & Lonely, *The Nancy Holt Teleportation Device*, 2013.

© Sober & Lonely. Courtesy Sober & Lonely.

Figure 49: Sober & Lonely, *The Nancy Holt Teleportation Device*, 2013.

© Sober & Lonely. Courtesy Sober & Lonely.

Figure 50: Sober & Lonely, *The Nancy Holt Teleportation Device*, 2013.

© Sober & Lonely. Courtesy Sober & Lonely.

Figure 51: Sober & Lonely, *The Nancy Holt Teleportation Device*, 2013.

© Sober & Lonely. Courtesy Sober & Lonely.

Figure 52: Sober & Lonely, *The Nancy Holt Teleportation Device*, 2013.

© Sober & Lonely. Courtesy Sober & Lonely.

Figure 53: Sober & Lonely, *The Nancy Holt Teleportation Device*, 2013.

© Sober & Lonely. Courtesy Sober & Lonely.

Figure 54: Sober & Lonely website, *Starz*, 2015

© Sober & Lonely and Shaun Hill. Courtesy Sober & Lonely.

Figure 55: Sober & Lonely website, *Sentient Beings*, 2015

© Sober & Lonely and Shaun Hill. Courtesy Sober & Lonely.

Figure 56: Sober & Lonely website, 2015.

© Sober & Lonely and Shaun Hill. Courtesy Sober & Lonely.

Figure 57: Sober & Lonely website, *SLLSFFM*, 2015

© Sober & Lonely and Shaun Hill. Courtesy Sober & Lonely.

Figure 58: Sober & Lonely website, *MIAC*, 2015

© Sober & Lonely and Shaun Hill. Courtesy Sober & Lonely.

Figure 59: Opening of *Metropolar meets the Children* at Keleketla!, 2016

© Keleketla!.

Figure 60: Opening of *Metropolar meets the Children* at Keleketla!, 2016

© Keleketla!.

Figure 61: Opening of *Metropolar meets the Children* at Keleketla!, 2016

© Keleketla!.

Figure 62: 'Skaftien #1' at Keleketla!, 2011

© Keleketla!. Courtesy Keleketla!.

At: <https://www.flickr.com/photos/60043544@No4/sets/72157626028629139/with/5481401371/>. Accessed 01/07/2016.

Figure 63: The Brother Moves On performing at 'Skaftien #1' at Keleketla!, 2011

© Keleketla!. Courtesy Keleketla!.

At: <https://www.flickr.com/photos/60043544@No4/sets/72157626028629139/with/5481401371/>. Accessed 01/07/2016.