

CHAPTER 6

Conclusion

“DESIGNING TODAY’S SPACES IS ABOUT CREATING AN ATMOSPHERE WHERE VISITORS INHERENTLY UNDERSTAND THAT THERE IS A MAGNETIC ATTRACTION TO THE PRODUCT” (RUMLER 2009).

This dissertation considered the interface between the museum visitor and the museum facilities, and how they can be connected through a design intervention to provide an optimum visitor experience at the D:NMCH.

The design intervention consisting of the ramped walkway, main entrance, foyer and atrium, aims to create a positive first impression to visitors of the D: NMCH. The onset visitor experience of the museum aims to stimulate the visitor's curiosity and encourage them to keep returning.

The final design is the result of various museum visits, site analysis of the D: NMCH and theoretical investigation. The theoretical investigation provides insight into the definition of museums, international and local standards of museology, visitor learning within museums and wayfinding within the context of the D: NMCH. It is important that visitors to the D:NMCH find the interior logical, positive and internationally competitive.

The physical link between research (surrounding artefacts), education (visitor learning) and exhibition design is user experience. The final design engages the visitor to create a lasting memory of the museum. This positive memory will aim to engage returning visitors, and also to attract new visitors. The foyer and atrium are the main design interventions which will strengthen the identity of the museum as a whole.

The atrium attracts visitors to the ground floor and thus makes visitors aware of the ground level. Tours through the storage and conservation areas will commence in the briefing area adjacent to the atrium. Visitors will be made aware of the importance of the conservation process of the museum during these tours.

The technical investigation of lighting and wayfinding explores the approach of the interior to be legible of the interior to a variety of museum visitors.

6.1. CONTRIBUTIONS

- Many museums in South Africa had to adapt to an existing building's interior where the visitor's experience have not been taken into consideration. This project illustrates how the visitor's experience should be the basis of designing a museum environment in an existing building.
- This project contributes to exhibition design within the field of interior design. The project creates a proposed temporary exhibition which can be used to assist in further exhibition redesigns within the D:NMCH.

6.2. RECOMMENDATIONS

The dissertation recognizes that museum design is a complex field. The final design focusses on the visitor's first impression of the museum and thus not on all aspects relating to the D: NMCH.

Some recommendations which could enrich the project are elaborated below.

- If the study is taken further, it is recommended that ethics clearance is obtained to extensively interview and photograph museum employees and visitors. This can be used to enhance the overall user experience.
- This project investigated lighting as the main issue relating to indoor environmental quality. Other aspects that are deemed satisfactory such as the air quality, thermal conditions and overall sustainability should be investigated further to optimise these aspects.
- The final design should act as catalyst within the D:NMCH. Iteration of other spaces within the museum should be considered with the focus remaining on the visitors' experience.
- The temporary exhibition included in the final design is an example of how the entire atrium volume can be used. It is recommended that all the existing exhibitions be redesigned and rendered interactive.
- The brand of Ditsong: Museums of South Africa can be further investigated and incorporated into the seven other Ditsong museums throughout Gauteng.

REFERENCES

Arcspace. 2012. Rose Centre for Earth and Space. Internet: <http://www.arcspace.com/features/ennead-architects/rose-center-for-earth-and-space/> Accessed: 20 August 2015.

Aust, S. 2006. In search of... Wayfinding. Internet: <http://www.signweb.com/content/in-search-of-wayfinding#Vgome9KUd8E> Accessed: 29 September 2015.

Berkeley. 2015. Social Constructivism. Internet: <http://gsi.berkeley.edu/gsi-guide-contents/learning-theory-research/social-constructivism/> Accessed: 19 May 2015.

Bertron, A, Schwarz, U and Frey, C. 2012. *Project Scope: Exhibition Design. A typology for architects, designers and museum professionals.* Basel: Birkhäuser.

Bhatnagar, A. 1999. *Museum, Museology and New Museology.* New Delhi: Sundeep Prakashan.

Botes, N. 2009. *Melkstoeltjies in die versamelings van die Nasionale Kultuurhistoriese Museum: 'n ondersoek na tipologie.* Masters thesis. Pretoria: University of Pretoria.

Cain, V. 2012. "Attraction, Attention, and Desire": Consumer Culture as Pedagogical Paradigm in Museums in the United States, 1900-1930. *Paedagogica Historica: International*

Charleston Museum. 2015. About the Museum. Internet: <https://www.charlestonmuseum.org/support-us/about-the-museum/> Accessed: 18 February 2015.

Dean, D. 1994. *Museum Exhibition. Theory and Practice.* London: Routledge.

Department: Arts and Culture. 2014. Ditsong museums of South Africa. Internet: www.dac.gov.za Accessed: 17 February 2015.

Design JD. 2015. Principles of wayfinding. Internet: <http://www.designjd.co.uk/design-branding-wayfinding-services/wayfinding/principles-of-wayfinding/> Accessed: 29 September 2015.

Ditsong. 2010. Ditsong Museums of South Africa. Internet: www.ditsong.org.za Accessed: 17 February 2015.

Ditsong. 2002. *Sculptured in Clay exhibition plaque.* Pretoria: Ditsong Museums of South Africa.

Ditsong. 2014. Media Release. International Museum Day. Internet: www.ditsong.org.za Accessed: 18 February 2015.

Ditsong. 2015. *Museum map.* Received: 22 April 2015.

Driscoll, DL. 2011. Introduction to primary research: Observations, surveys and interviews. *Writing spaces.* 2: 153-174.

EJAL. 2003. Grand entrance and reception. Internet: <http://www.ejal.com/project.php?projNo=3&catNo=1&nextNo=3> Accessed: 20 August 2015.

Ennead. 2014. American Museum of Natural History – Rose Centre. Internet: <http://ennead.com/#/projects/amnh-rose-center> Accessed: 20 August 2015.

Favermann, M. 2013. Philip Johnson's Glass House: Modern Architecture in Rolling Connecticut Hills. Internet: <http://www.artesmagazine.com/2013/04/philip-johnsons-glass-house-modern-architecture-in-rolling-connecticut-hills/> Accessed: 18 February 2015.

Foltz, M.A. 2015. Design principles for wayfinding. Internet: <http://www.ai.mit.edu/projects/infoarch/publications/mfoltz-thesis/node8.html> Accessed: 12 August 2015.

Forbo. 2014. Marmoleum. Internet: www.forbo.com Accessed: 15 September 2015.

Fors, V. 2013. Teenagers' Multisensory Routes for Learning in the Museum. *The Senses and Society.* 8, 3: 268-289. Internet: <http://dx.doi.org/10.2752/174589313X13712175020479> Accessed: 20 August 2015.

Frost, S. 2009. Behind the scenes: Conservation and audience engagement. *Conservation Journal.* Issue 58. Internet: <http://www.vam.ac.uk/content/journals/conservationjournal/autumn2009issue58/behindthescenesconservationandaudienceengagement/> Accessed: 18 February 2015.

Ganief, A and Thorpe, J. 2013. City of Tshwane general and regional overview. Internet: http://www.parliament.gov.za/content/Tshwane_General_and_Regions_Report_2013.pdf Accessed: 14 August 2015.

Goldberger, P. 1995. Natural History Museum plans big overhaul. *New York Times.* Internet: <http://www.nytimes.com/1995/01/27/nyregion/natural-history-museum-plans-big-overhaul.html> Accessed: 18 August 2015.

Golledge, R.G. 1999. *Wayfinding Behavior. Cognitive mapping and other spatial processes.* Baltimore: The Johns Hopkins University Press.

Groat, L and Wang, D. 2002. *Architectural research methods.* Canada: John Wiley & sons, inc.

Gutwill, J.P, Hido, N and Sindorf, L. 2015. Research to Practice: Observing learning in tinkering activities. *Curator Journal.* Vol. 58 nr 2: 151-168

Häfele. . Ironmongery. Internet: www.hafele.com Accessed: 27 September 2015.

Hausladen, G and Tichelmann, K. 2010. *Interiors Construction Manual. Integrated planning finishings and fitting-out technical services*. Basel: Birkhäuser.

Herrera, F. 2009. Seattle Central Library. [Internet:](http://www.archdaily.com/?p=11651) <http://www.archdaily.com/?p=11651> Accessed: 15 May 2015.

ICOM. 2010. Standards and guidelines. [Internet:](http://icom.museum/professional-standards/standards-guidelines/) <http://icom.museum/professional-standards/standards-guidelines/> Accessed: 17 February 2015.

Interpon. 2015. Powder coating. [Internet:](http://www.interpon.co.za) www.interpon.co.za Accessed: 19 August 2015.

Jewish Museum. 2015. Jewish Museum Berlin. [Internet:](http://www.jmberlin.de/main/EN/homepage-EN.php) <http://www.jmberlin.de/main/EN/homepage-EN.php> Accessed: 18 February 2015.

Jodidio, P. 2006. *Architecture Now! 4*. Cologne: Taschen. *Journal of the History of Education*. 48, 5: 745-769. [Internet:](http://dx.doi.org/10.1080/00309230.2012.667422) <http://dx.doi.org/10.1080/00309230.2012.667422> Accessed: 20 August 2015.

Kenny, N. 2010. What is critical reflection? [Internet:](http://opened.uoguelph.ca/pdf/Critical%20Reflection.pdf) <http://opened.uoguelph.ca/pdf/Critical%20Reflection.pdf> Accessed: 26 February 2015.

Kling, B and Kruger, T. 2013. *Signage. Spatial Orientation*. Munich: Detail

Kroll, A. 2010. AD Classics: Jewish Museum, Berlin. Daniel Libeskind. [Internet:](http://www.archdaily.com/91273/ad-classics-jewish-museum-berlin-daniel-libeskind/) <http://www.archdaily.com/91273/ad-classics-jewish-museum-berlin-daniel-libeskind/> Accessed: 13 September 2015.

KWP. 1993. Pretoria: Ou Munt gebou; omskepping in die Nasionale Kultuur Historiese Museum vir die Departement Plaaskike bestuur, behuising en werke. Verslag van ontwerpspan.

Lafarge. 2015. Lafarge Technical Manual. [Internet:](http://www.lafarge.co.za) www.lafarge.co.za Accessed: 15 September 2015.

Magnus Steel. 2015. Perforated Plate. [Internet:](http://www.magnussteel.co.za/products/perforated-plate/) <http://www.magnussteel.co.za/products/perforated-plate/> Accessed: 27 September 2015.

Maropeng. 2015. Admission. [Internet:](http://www.maropeng.co.za/content/page/admission) <http://www.maropeng.co.za/content/page/admission> Accessed: 14 August 2015.

Mattern, S. 2013. Just how public is the Seattle Public Library? *Journal of Architectural Education*. 57,1: 5-18. [Internet:](http://dx.doi.org/10.1162/104648803322336548) <http://dx.doi.org/10.1162/104648803322336548> Accessed: 20 August 2015.

McKenna-Cress, P. and Kamien, J.A. 2013. *Creating exhibitiona. Collaboration in the planning, development and design of innovative experiences*. New Jersey: John Wiley & Sons.

McLean, F. 1997. *Marketing the museum*. London: Routledge.

Mqueen, A. 2011. *Alexander McQueen: Savage Beauty*. New York: The Metropolitan Museum of Art.

Newhouse, V. 1998. *Towards a new museum*. New York: The Monacelli Press.

OMA. 2004. Seattle Central Library. [Internet:](http://oma.eu/projects/2004/seattle-central-library) <http://oma.eu/projects/2004/seattle-central-library> Accessed: 17 May 2015.

Osram. 2015. Interior luminaires. [Internet:](http://www.osram.co.za) www.osram.co.za Accessed: 9 September 2015.

PG Bison. 2015. Formica. [Internet:](http://www.pgbison.co.za) www.pgbison.co.za Accessed: 27 September 2015.

Plascon. 2015. Inspired Colour System. [Internet:](http://www.plascon.co.za/colour/Default.aspx) www.plascon.co.za/colour/Default.aspx Accessed: 18 September 2015.

Prat, R. 2009. Seattle Central Library. [Internet:](http://www.archdaily.com/?p=11651) <http://www.archdaily.com/?p=11651> Accessed: 15 May 2015.

PRS Architects. 2003. Victoria and Albert Museum. [Internet:](http://prsarchitects.de/arts_civic.php?id=7) http://prsarchitects.de/arts_civic.php?id=7 Accessed: 20 August 2015.

Roodt-Coetzee, K. 1989. My herhinneringe aan die voorgeskiedenis van die Nasionale Kultuurhistoriese en Opelugmuseum. *Museum Memo*. 17(3):5-8

Ruault, P. 2009. Seattle Central Library. [Internet:](http://www.archdaily.com/?p=11651) <http://www.archdaily.com/?p=11651> Accessed: 15 May 2015.

Rumler, C. 2009. *Exhibition*. Hong Kong: Pace Publishing limited.

SAMA. 2006. *Professional standards and transformation indicators*. Port Alfred: SAMA.

SAMA. 2013. Museum definition. [Internet:](http://www.sama.za.net/definition-of-a-museums/) <http://www.sama.za.net/definition-of-a-museums/> Accessed: 11 August 2015.

SANS. 2011. South African National Standard. The application of the National Building Regulations. Pretoria: SABS Standards Division.

Sánchez Vidiella, A. 2011. *Sourcebook of Contemporary Architecture*. New York: Harper Design.

Schittich, C. 2009. *Exhibition and display. Museum design concepts. Brand presentation. Trade show design*. Basel: Birkhauser.

Scott, F. 2008. *On Altering Architecture*. London: Routledge

Screven, C. 1993. Museums and informal education. [Internet:](http://www.infed.org/archives/e-texts/screven-museums.htm) <http://www.infed.org/archives/e-texts/screven-museums.htm> Accessed: 26 March 2015.

Steenkamp, W. 2014. The Sci-Bono annual report: showcasing the fun of science. Internet: <http://www.flowsa.com/blog/entry/the-sci-bono-annual-report-showcasing-the-fun-of-science/> Accessed: 20 August 2015.

Stephen, B. 2013. In Praise of the Flaneur. Internet: <http://www.theparisreview.org/blog/2013/10/17/in-praise-of-the-flaneur/> Accessed: 18 August 2015.

Trox. 2015. Slot diffuser. Internet: www.troxtechnik.com Accessed: 24 September 2015.

Truco. Rubber flooring. Internet: <http://www.truco.co.za/rubber-flooring.htm> Accessed: 26 September 2015.

UNESCO. 2010. *Cultural heritage protection handbook. No 5. Handling of collections in storage*. Paris: Cloitre Imprimeurs.

VAM. 2003. Development of the Grand Entrance and Dome. Internet: <http://www.vam.ac.uk/content/articles/d/development-of-the-grand-entrance-and-dome> Accessed: 20 August 2015.

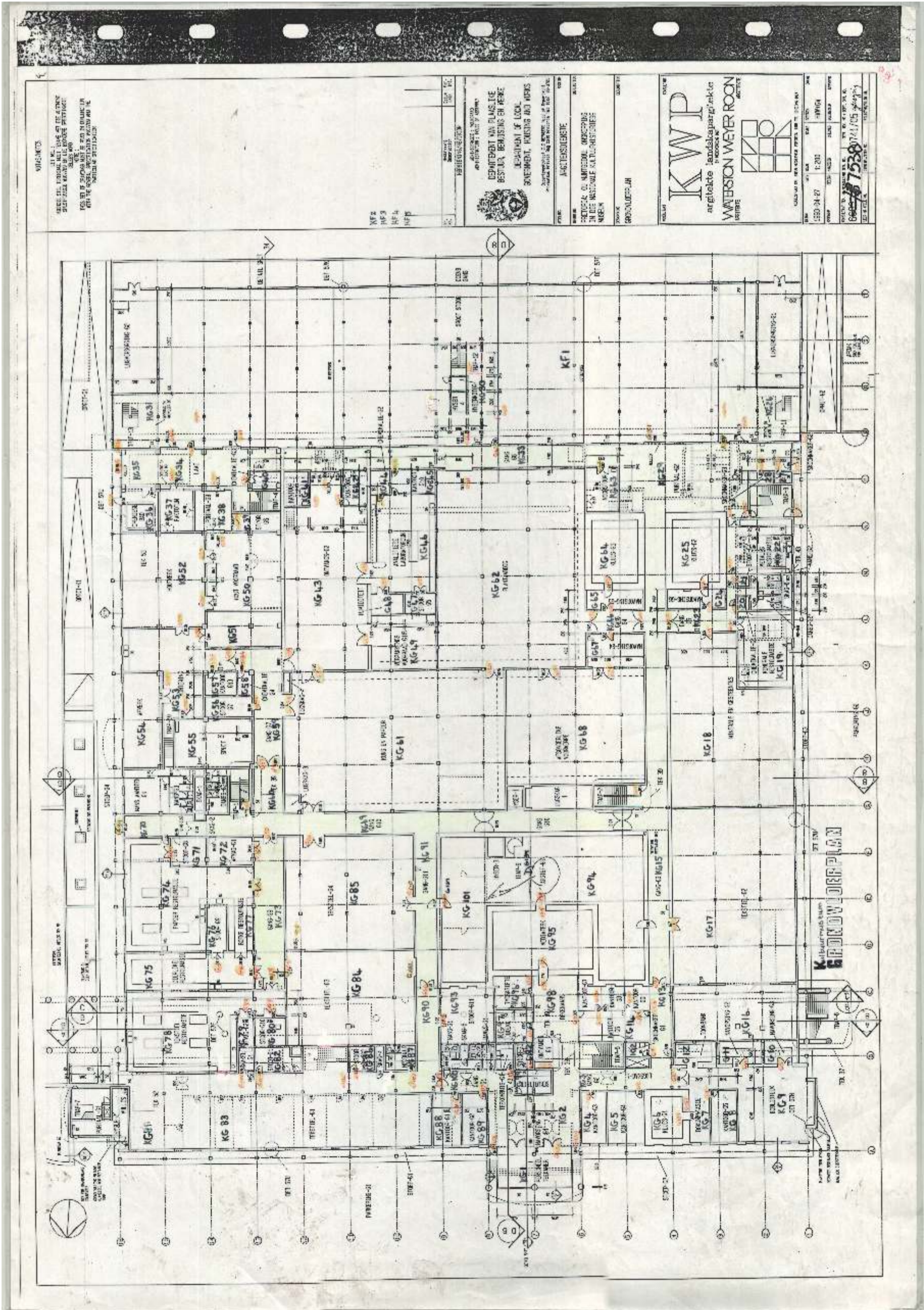
VAM. 2014. V & A Museum FuturePlan. Internet: <http://www.vam.ac.uk/page/f/futureplan/> Accessed: 18 February 2015.

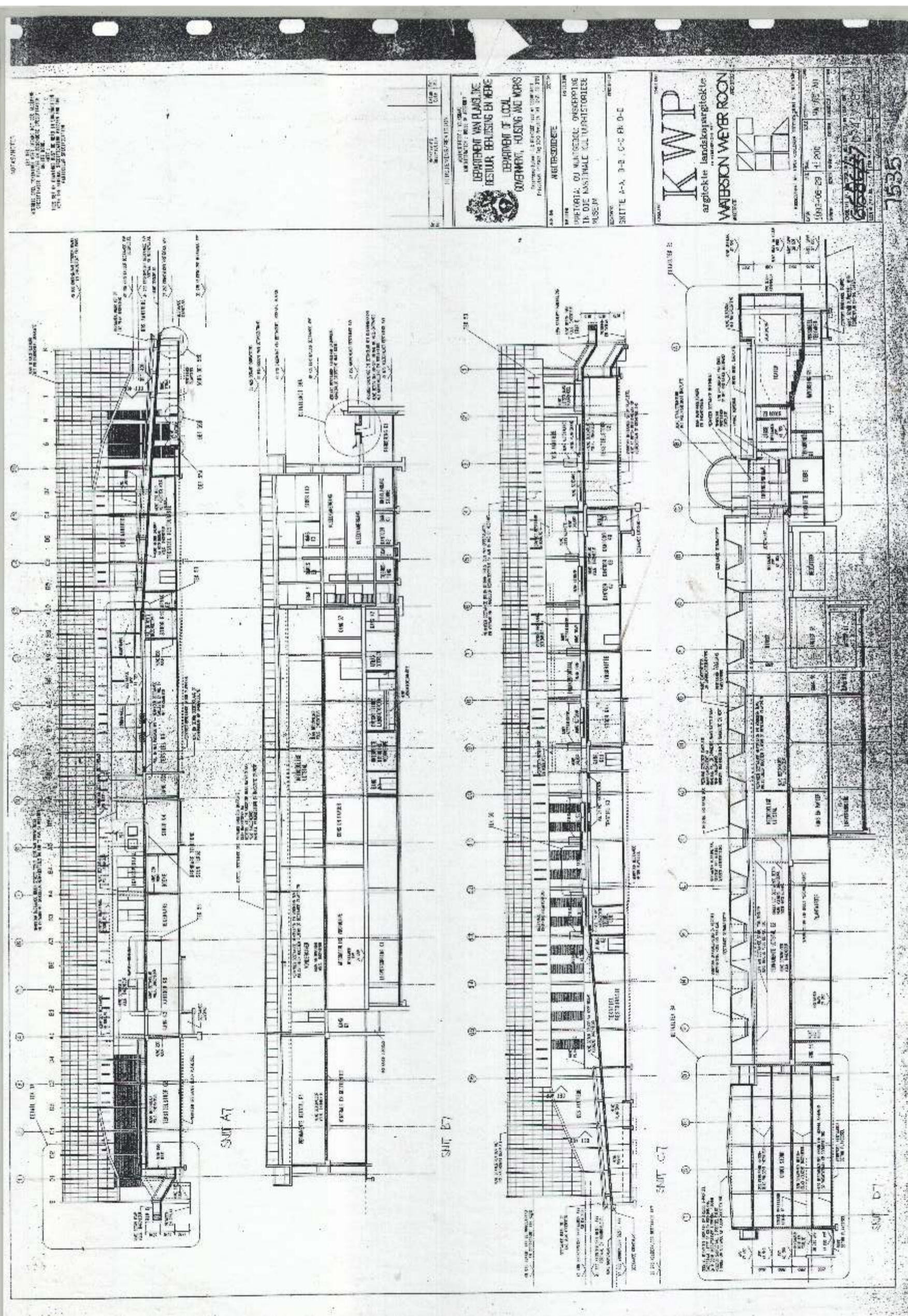
Vinnitskaya, I. 2011. V&A Exhibition Road. Internet: <http://archdaily.com/127644/va-exhibition-road-amanda-levete-architects/> Accessed: 18 February 2015.

Vollgraaff, H. 2013. Redefining the role of museums in heritage practice. *South African Museums Bulletin*. Volume 36:23-27. Paarl: SAMA.

Vygotsky, L.S. 1978. *Mind in Society. The development of higher psychological processes*. Cambridge: Harvard University Press.

Wayworks. 2014. Seattle Central Library – Wayfinding and signage design. Internet: http://wayworks.net/res/work_s_spl1.html Accessed: 20 August 2015.





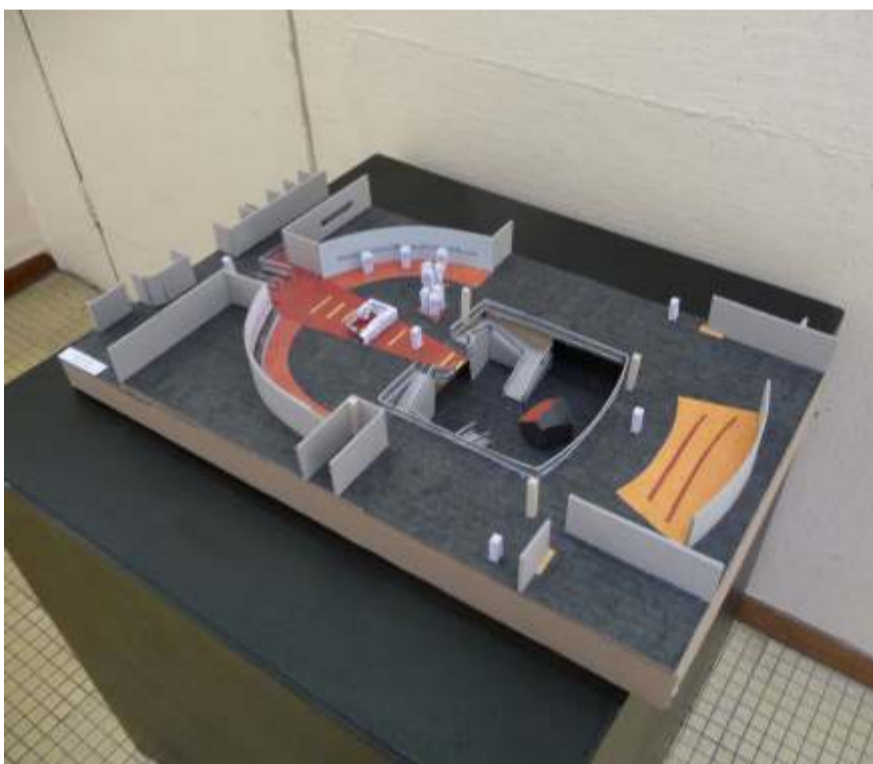
OPASINTEK
VERBODEN TOEGANG TOT DIESE TEKENING EN ALLE ANDERES WAT DAARVAN AFLEIDING IS.
DIE RECHTE VAN Auteurskap behoort toe aan die Oorspronker van die Tekening.
DIE RECHTE VAN Auteurskap behoort toe aan die Oorspronker van die Tekening.
DIE RECHTE VAN Auteurskap behoort toe aan die Oorspronker van die Tekening.

UNIVERSITEIT VAN PRETORIA
DEPARTMENT OF PLANNING
REESTER, BEHOUDING EN VERBODING
GOVERNMENT HOUSING AND WORKS
PRETORIA, OUNIVERSITEIT
TR. OOR NATIONALE KUNSTGESKIEDENIS
WISSELM
SUITE A-A, B-B, C-C PH. D-C

KWP
argitekto landskapsargitekto
WATERSON WEYER ROON
PRETORIA

7535

Appendix - B. EXAM PRESENTATION



Final design intervention model



Final wall cladding model



Design development models



Sample board