

7

---

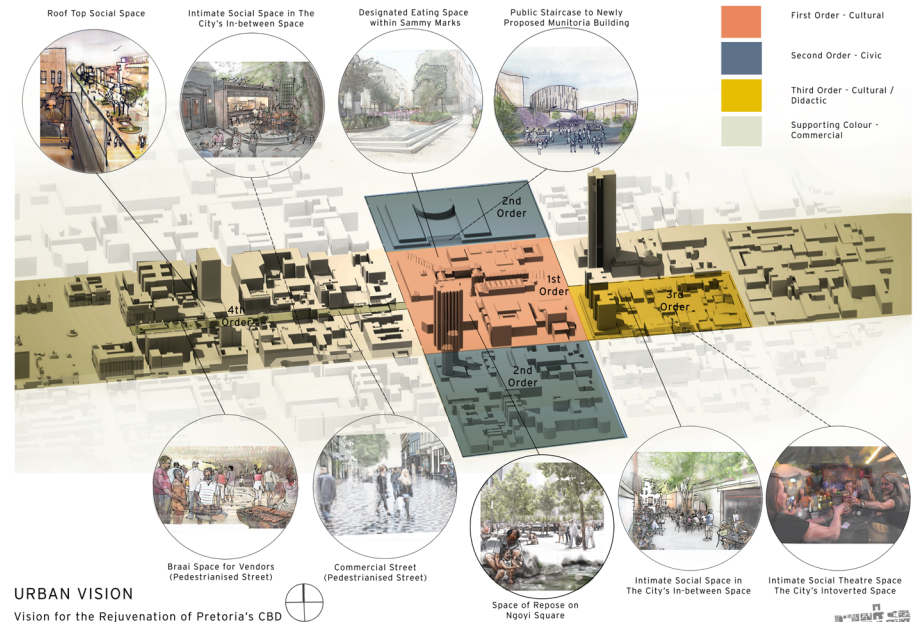
# FINAL DESIGN PRESENTATION



# Urban Proscenium

A Cultural Precinct in Pretoria's Central Business District.  
A vision for urban rejuvenation of Pretoria's CBD

Urban Findings:  
The CBD has become In-active because of Urban Sprawl.  
Exothermic Nature of the South African State Theatre Building.  
Site has the potential to form a Cultural gateway.



URBAN VISION  
Vision for the Rejuvenation of Pretoria's CBD

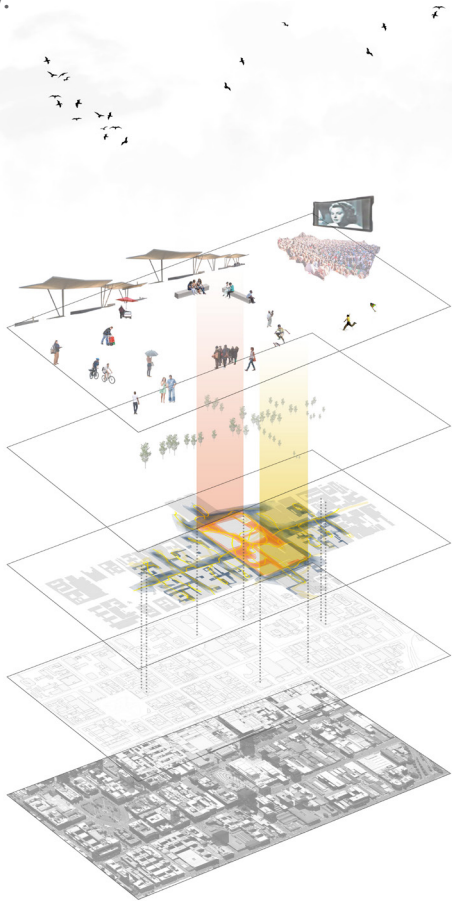


FIGURE 151 - URBAN PROSCENIUM - URBAN VISION - FINAL PRESENTATION (AUTHOR 2015)



URBAN VISION  
Design Guidelines For Urban Interventions



Contesting For Recognition Results In Endothermic Spaces.  
Each Agenda Promotes And Isolates It From The Whole.



RESULTS OF CONTESTATIONS  
Contesting For Recognition Results in Out Of Scale, Intimidating, Unapproachable Architecture.



## SITE SELECTIONS

Urban Justifications For Site Selections



FIGURE 152 - URBAN PROSCENIUM - URBAN JUSTIFICATION FOR SITE SELECTION VISION - FINAL PRESENTATION (AUTHOR 2015)



# Application of Arcades



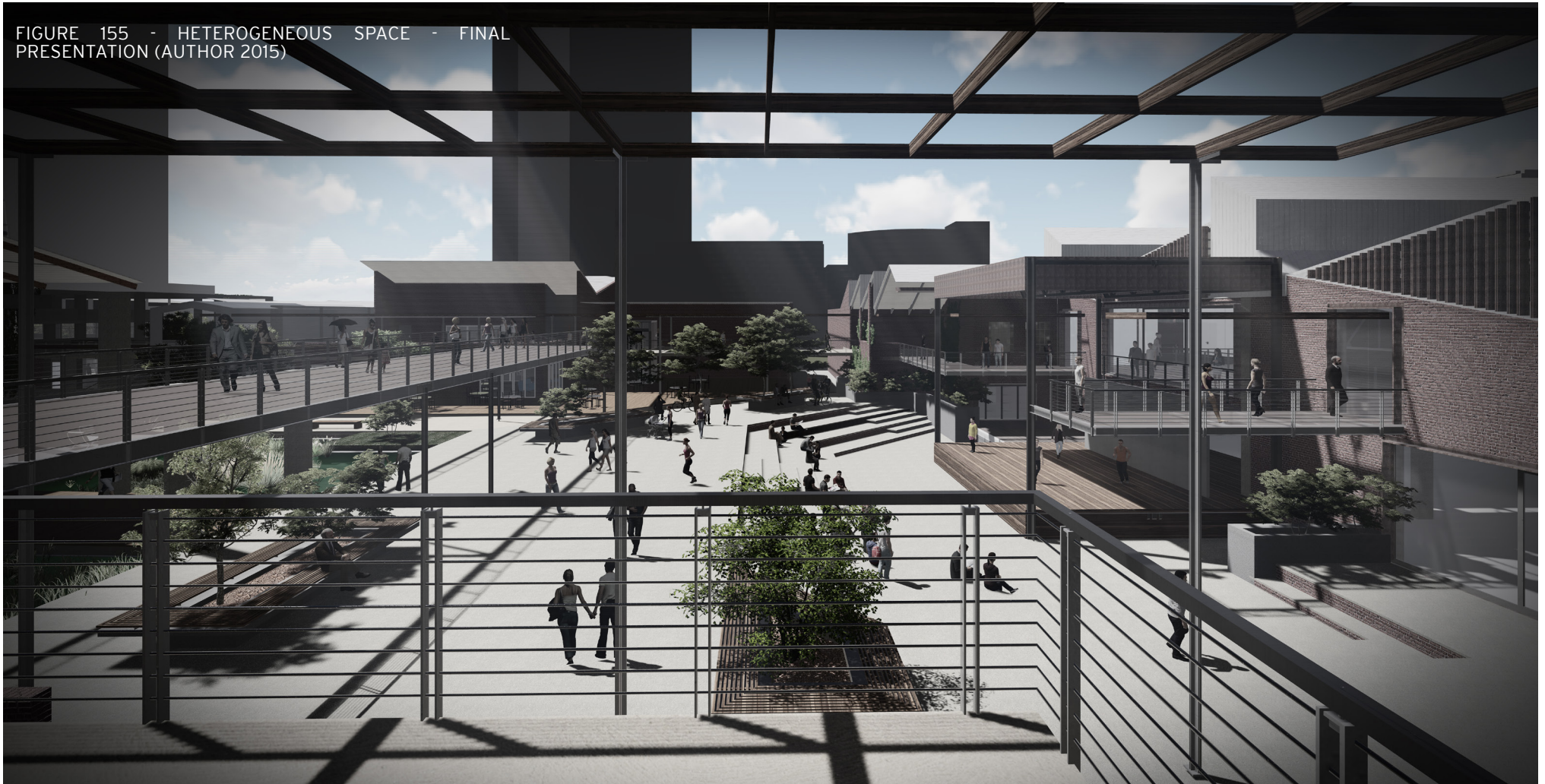
## Prinschurch Entrances to Arcade

FIGURE 153 - APPLICATION OF ARCADES - PRINSCHURCH BUILDING - FINAL PRESENTATION (AUTHOR 2015)





FIGURE 155 - HETEROGENEOUS SPACE - FINAL PRESENTATION (AUTHOR 2015)



## Design of spaces that provide for "Heterogeneous Society"

The level of exposure should be controlled to keep its unique quality and "hidden" characteristics. The plaza forms part of the idea of "breaking the fourth wall", that the process and performance is seen as a journey through the spaces rather than merely an activity taking place in a designated theatre space. The plaza is used to showcase the theatrical process, from "Back of House" to performance, providing the public with a practical demonstration and, ideally, a greater appreciation of theatre.

This plaza is intended to become the unprogrammed and fluid event-driven space, where users can simply "be", proposed as part of event-driven space theory.

The courtyard space is designed for the collective: individuals should be free to create their own place and in the same time are encouraged to socialise in the open spaces. The space requires smaller pockets of open-ended activity for multi-cultural use, as seen in Fig. 155.

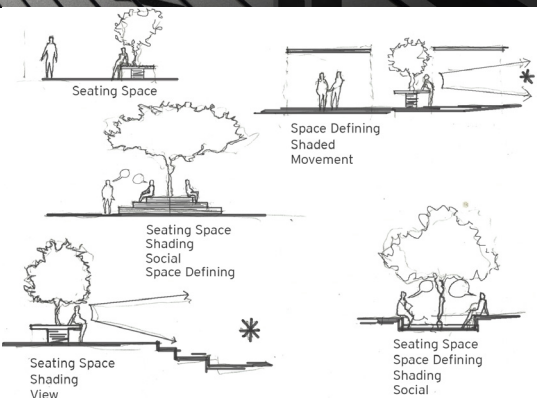
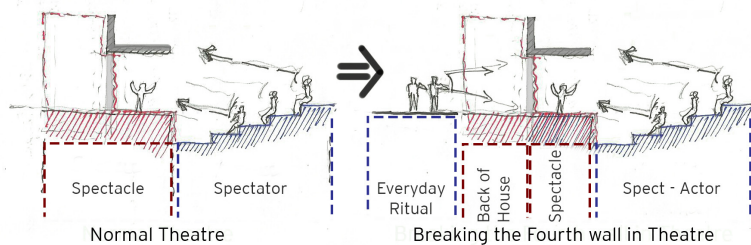




FIGURE 156 - PROGRAMMATIC CONCEPT - FINAL PRESENTATION (AUTHOR 2015)



PERSPECTIVE OF PRINSCHURCH ENTRANCE INTO ARCADE FROM SISULU STREET

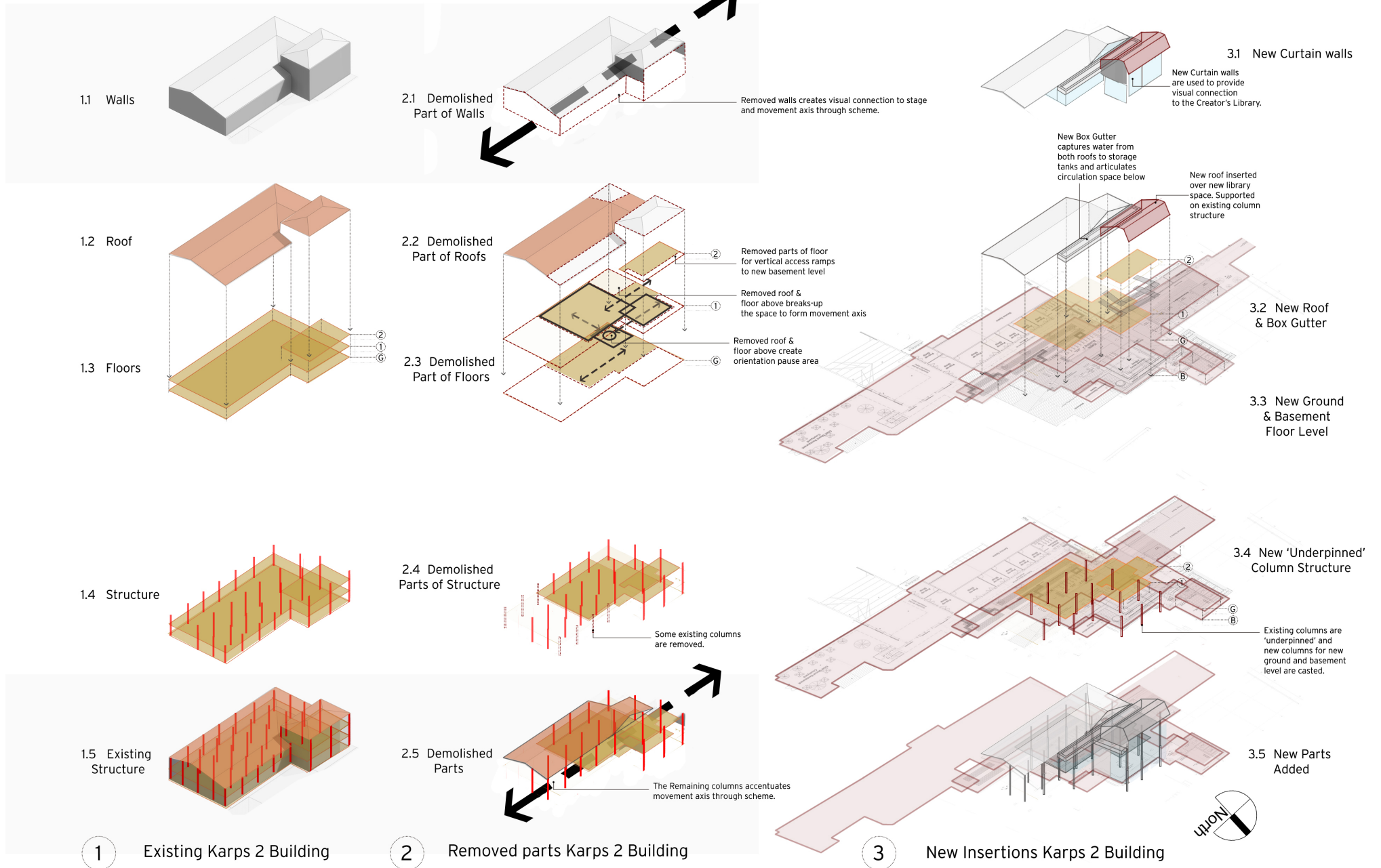


Programmatic Intent: "Breaking the fourth wall" - providing public life with a visual and physical connection into the back of house programmes.

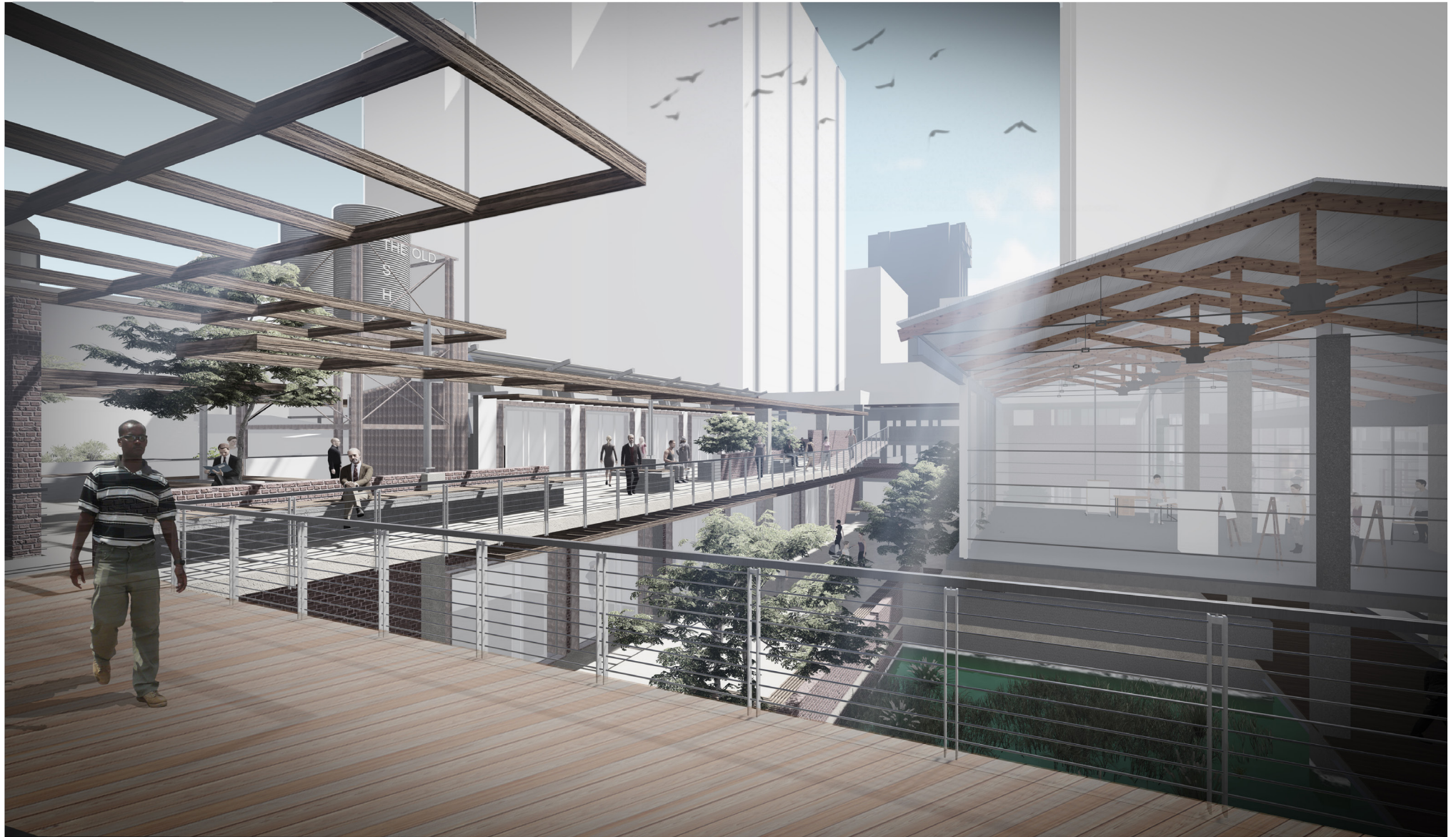
### Programmatic Concept: "Breaking the Fourth Wall"

The inclusive condition is further achieved, through the programmatic concept of "breaking the fourth wall" - providing public life with a visual and physical connection into the "Back of House" theatre programmes. The process is made public from "Back of House" to performance, providing the public with a deeper understanding of theatre. The idea of "breaking the fourth wall" is that the process and performance is seen as a journey through the "Back of House" theatre process and spaces, rather than merely an activity taking place in a designated theatre space. A stage can be a separating device, or the function could be blurred so that the audience can participate with the performers - this can be interpreted as the interface between public and private, the event space and transitions into the social or public interface. Thus, the stage serves as a means to frame social or public interaction, see (Fig. 156).

FIGURE 157 - KARPS 2 DESIGN DEVELOPMENT - FINAL PRESENTATION (AUTHOR 2015)







PERSPECTIVE VIEW OF BOUTIQUE SHOPS & KARPS 2 BUILDING

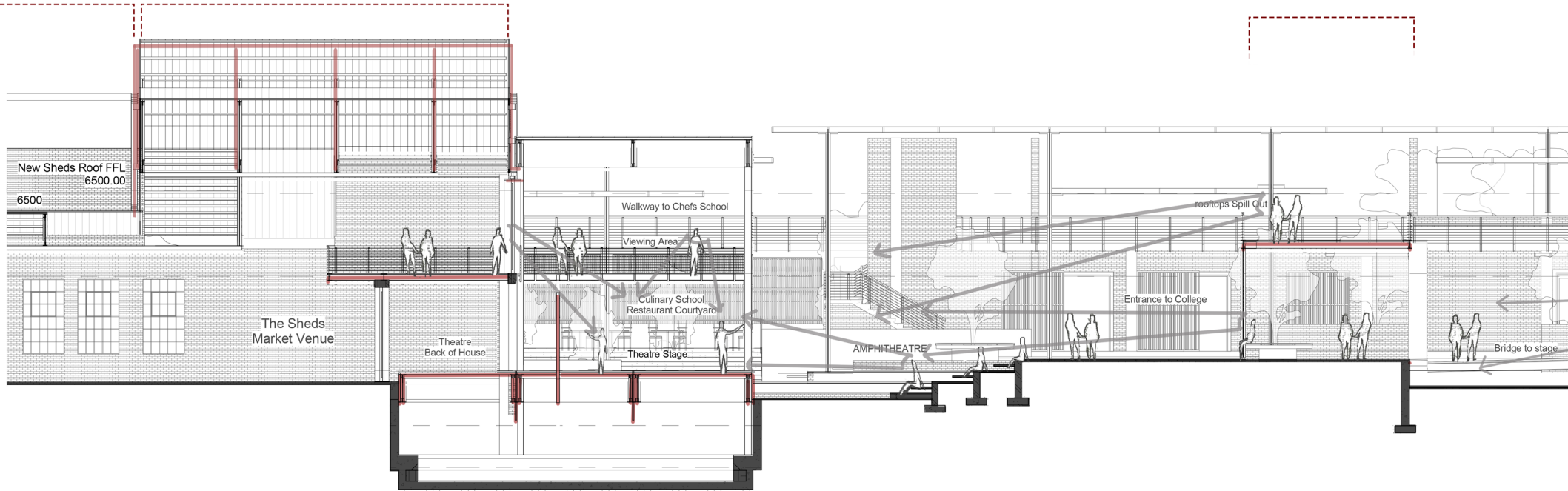
FIGURE 158 - PERSPECTIVE VIEW OF BOUTIQUE SHOPS & KARPS 2 - FINAL PRESENTATION (AUTHOR 2015)



Existing 'Sheds' Trusses with new roof sheeting

Existing 'Sheds' Trusses are adapted and re-used to form roof over new mezzanine level.

New bridge connecting buildings surrounding plaza (form viewing platform to stage)



'The New Sheds' Events & Neighbourgoods Market Space

New Adaptable Theatre Stage

Amphitheatre

Circulation

Planter Seating

Circulation

Section BB - New Condition in Karpis 2 & 'The Sheds'

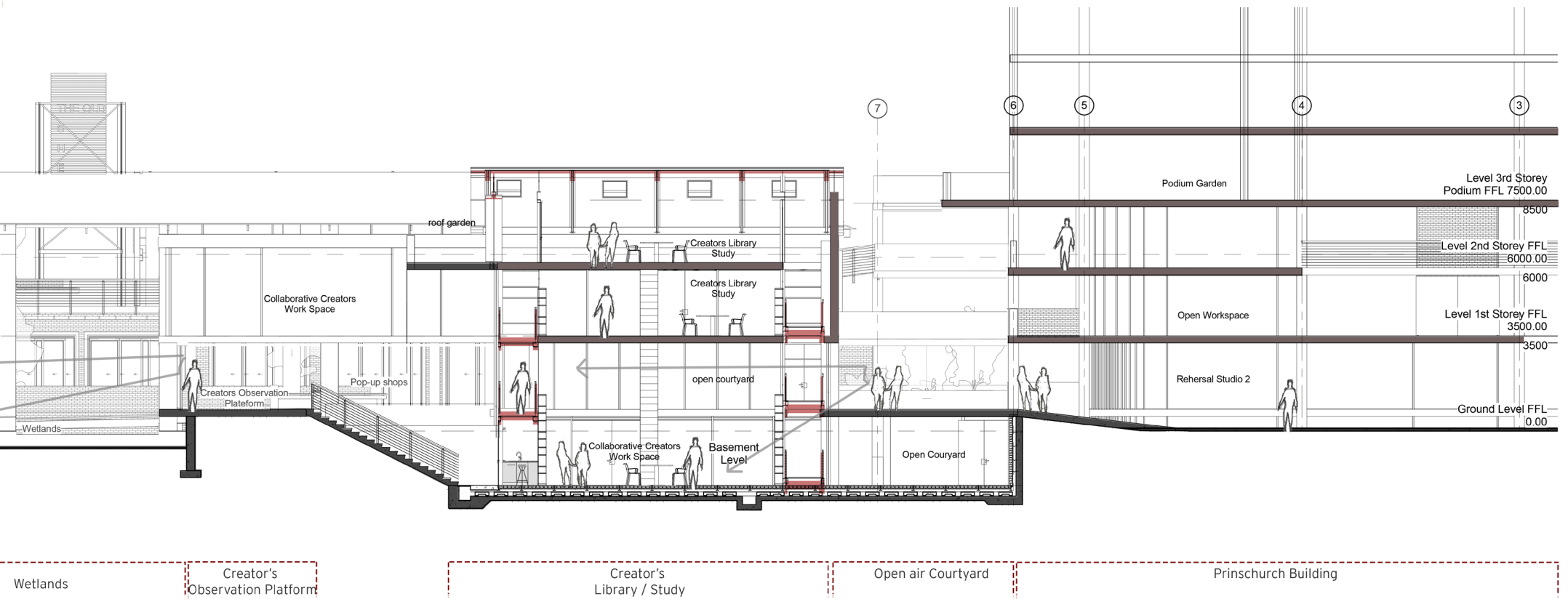
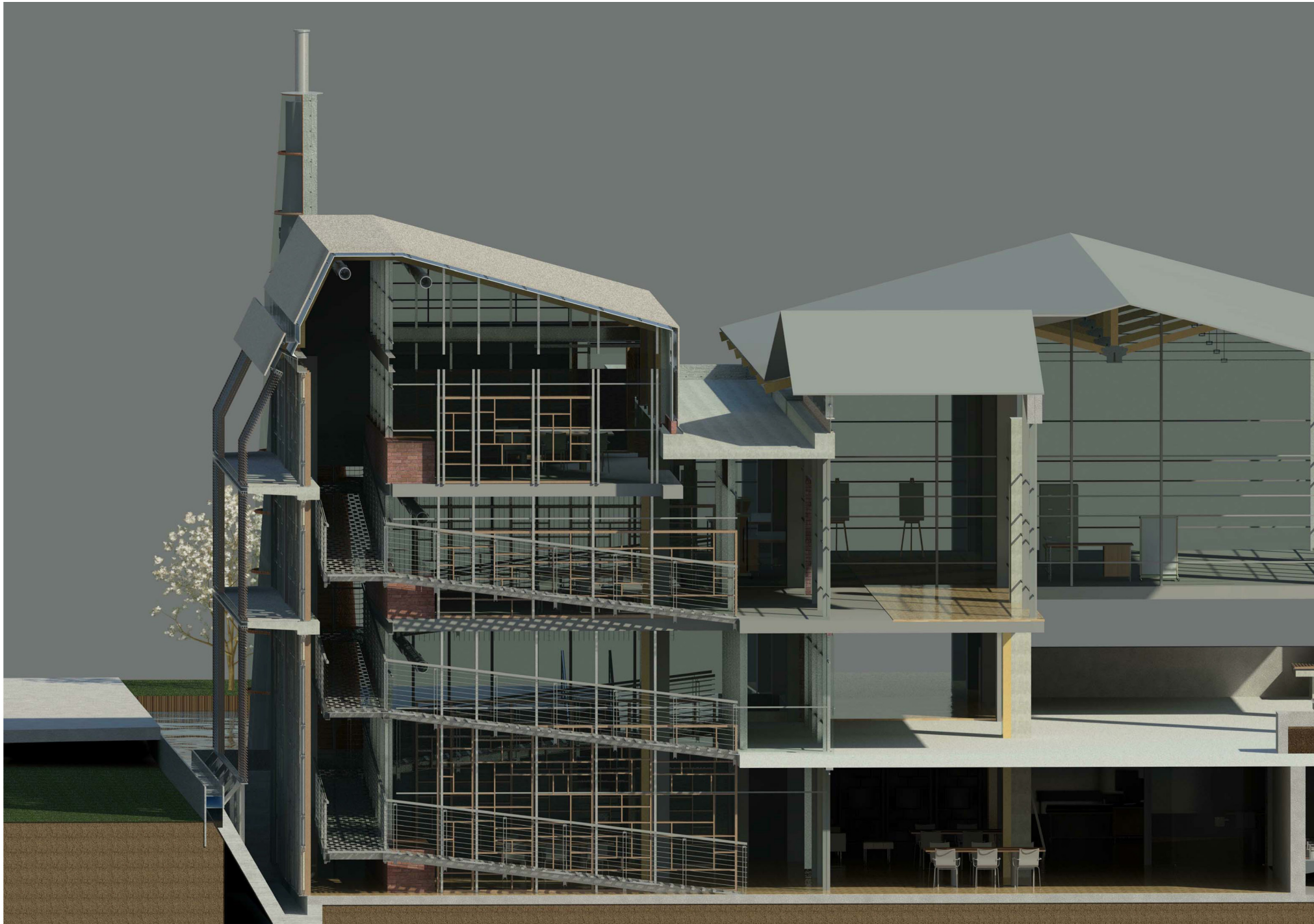


FIGURE 159 - SECTION BB - NEW CONDITION IN KARPIS 2 & "THE SHEDS" - FINAL PRESENTATION (AUTHOR 2015)





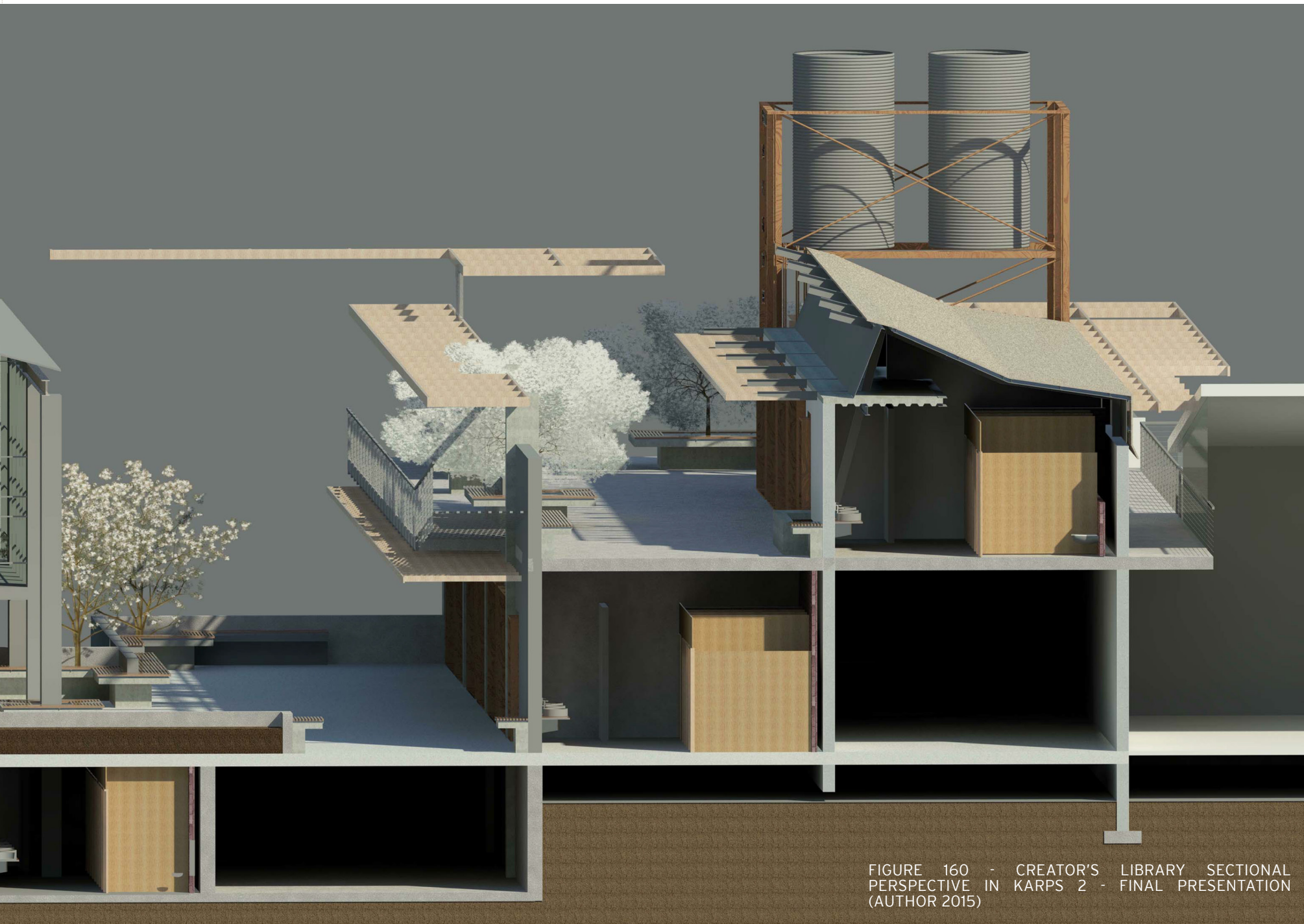
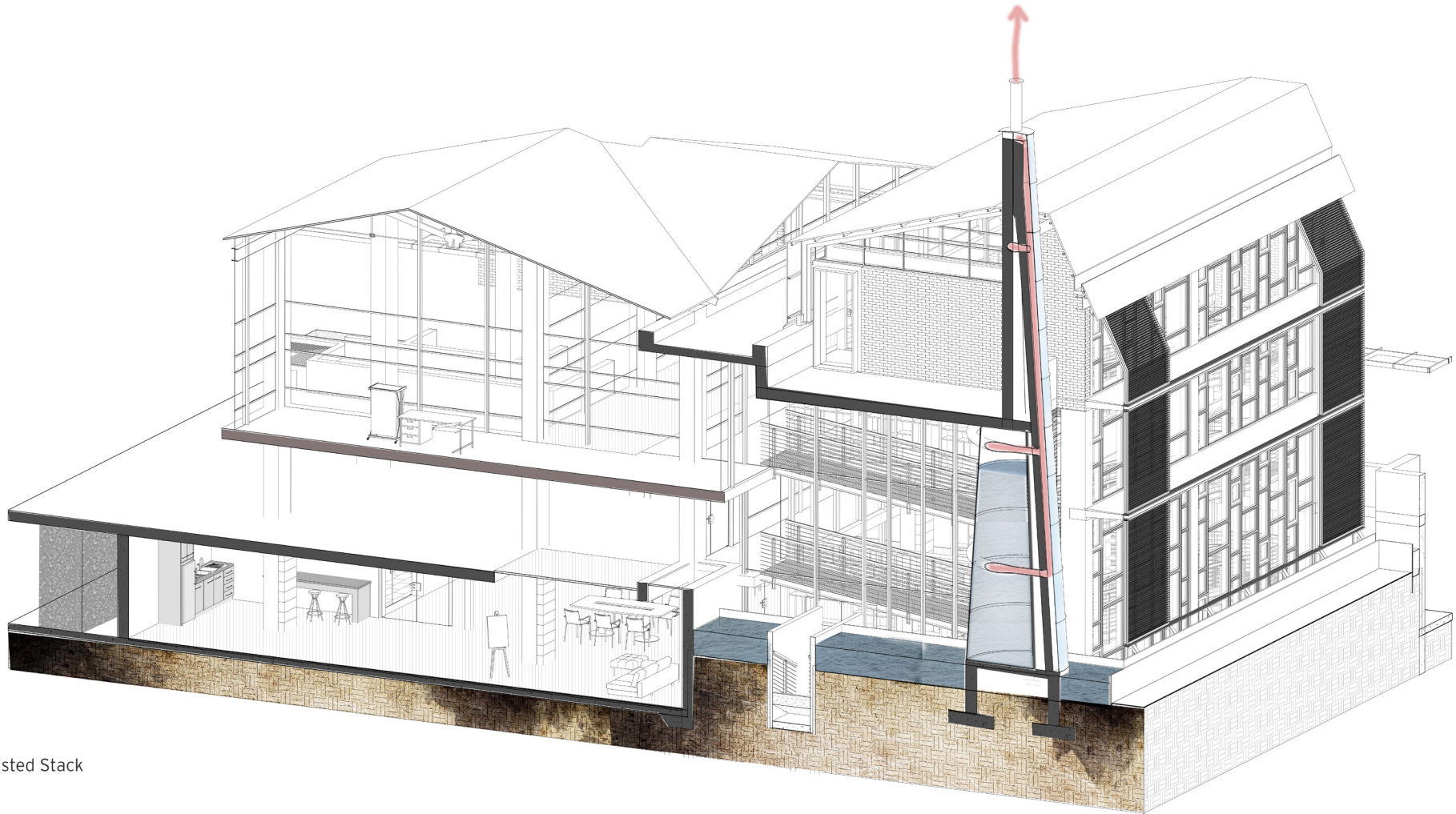


FIGURE 160 - CREATOR'S LIBRARY SECTIONAL PERSPECTIVE IN KARPS 2 - FINAL PRESENTATION (AUTHOR 2015)



Trombe Assisted Stack

FIGURE 161 - SECTIONAL PERSPECTIVE SHOWING TROMBE ASSISTED STACK - FINAL PRESENTATION (AUTHOR 2015)





FIGURE 162 - CREATOR'S LIBRARY PERSPECTIVE - FINAL PRESENTATION (AUTHOR 2015)



# Design Development - "The Sheds" Building

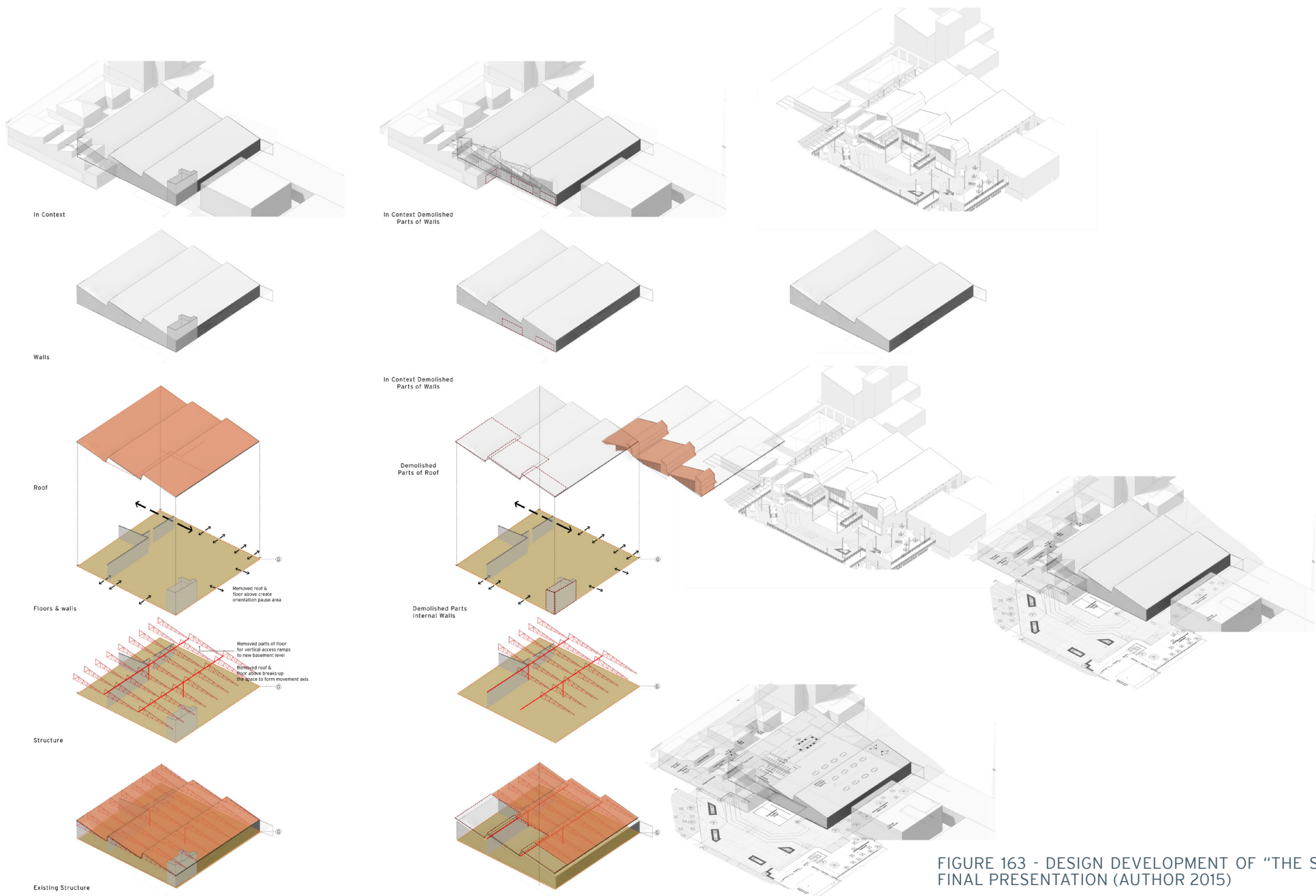
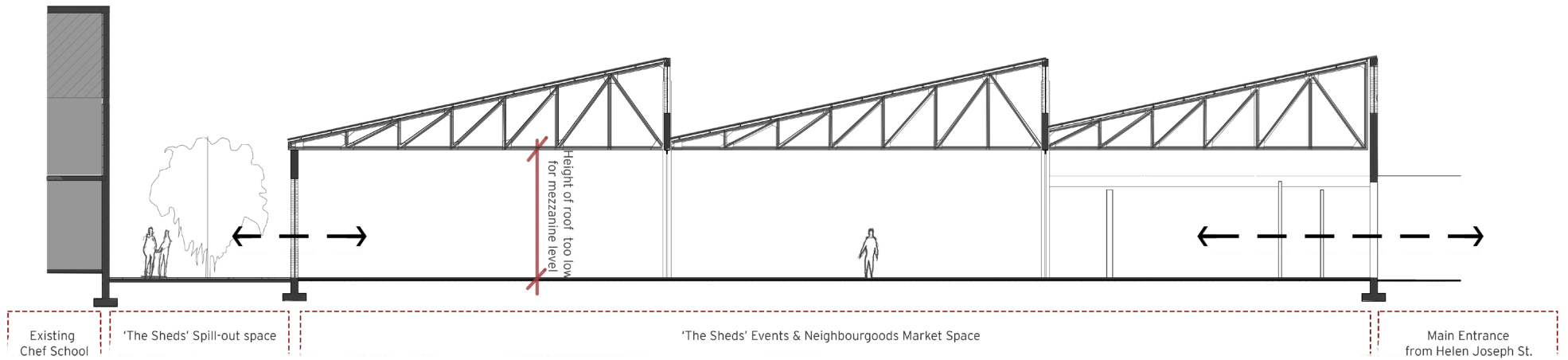
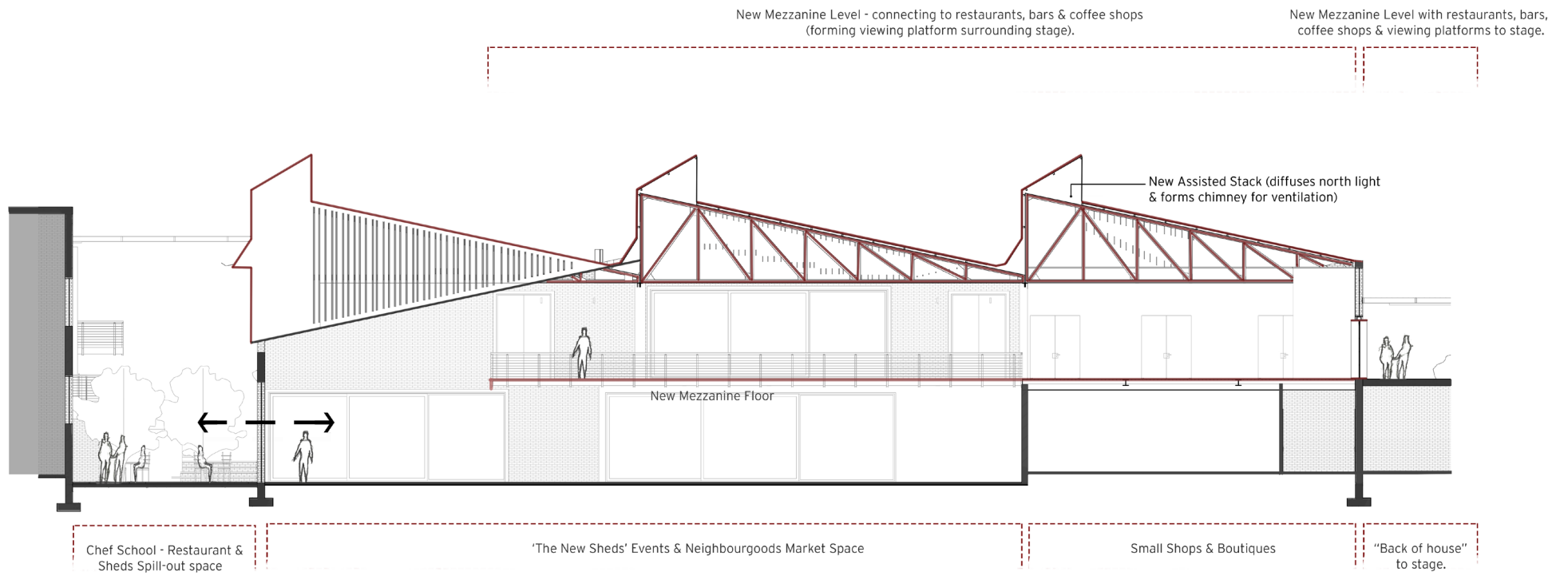


FIGURE 163 - DESIGN DEVELOPMENT OF "THE SHEDS" - FINAL PRESENTATION (AUTHOR 2015)

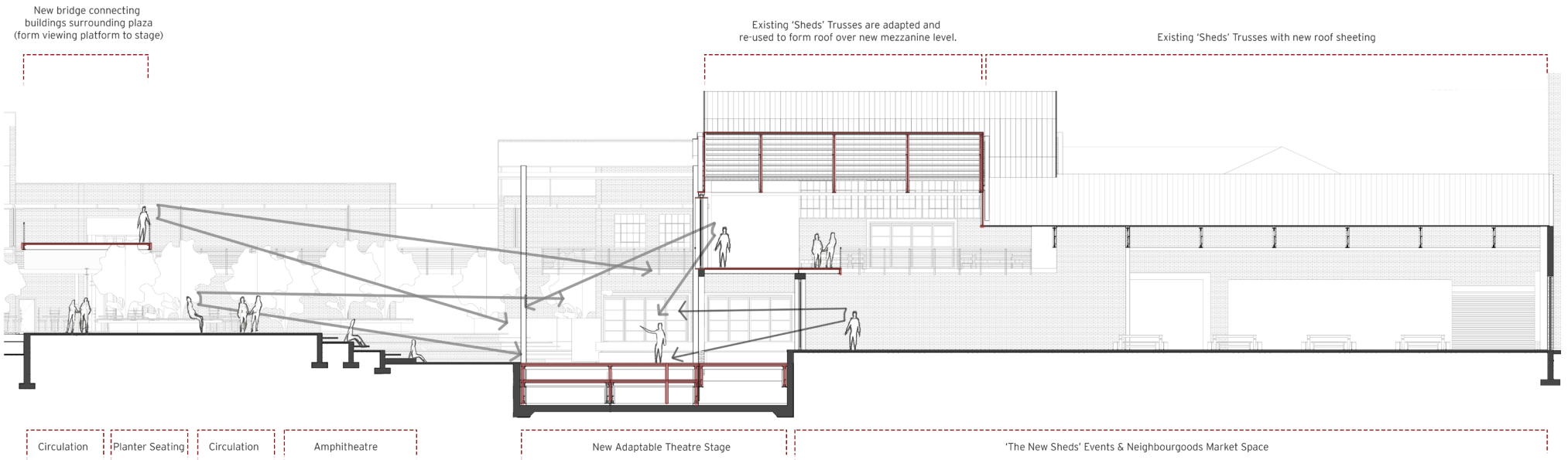


Section BB - Existing Condition in 'The Sheds'



Section BB - New Condition in 'The Sheds'

FIGURE 164 - SECTIONAL DEVELOPMENT OF "THE SHEDS" ROOF & MEZZANINE - FINAL PRESENTATION (AUTHOR 2015)



Section CC - New Condition in 'The Sheds'



2 Theatre Stage Adaption\_open  
1:1



3 Theatre Stage Adaption\_closed  
1:1

FIGURE 165 - THEATRE STAGE ADAPTION & SECTION CC - FINAL PRESENTATION (AUTHOR 2015)





PERSPECTIVE VIEW OF AMPHITHEATRE

FIGURE 166 - PERSPECTIVE VIEW OF AMPHITHEATRE - FINAL PRESENTATION (AUTHOR 2015)



## PERPSECTIVE VIEW OF AMPHITHEATRE FROM CULINARY SCHOOL RESTAURANT

FIGURE 167 - PERSPECTIVE VIEW OF AMPHITHEATRE FROM CULINARY SCHOOL - FINAL PRESENTATION (AUTHOR 2015)

