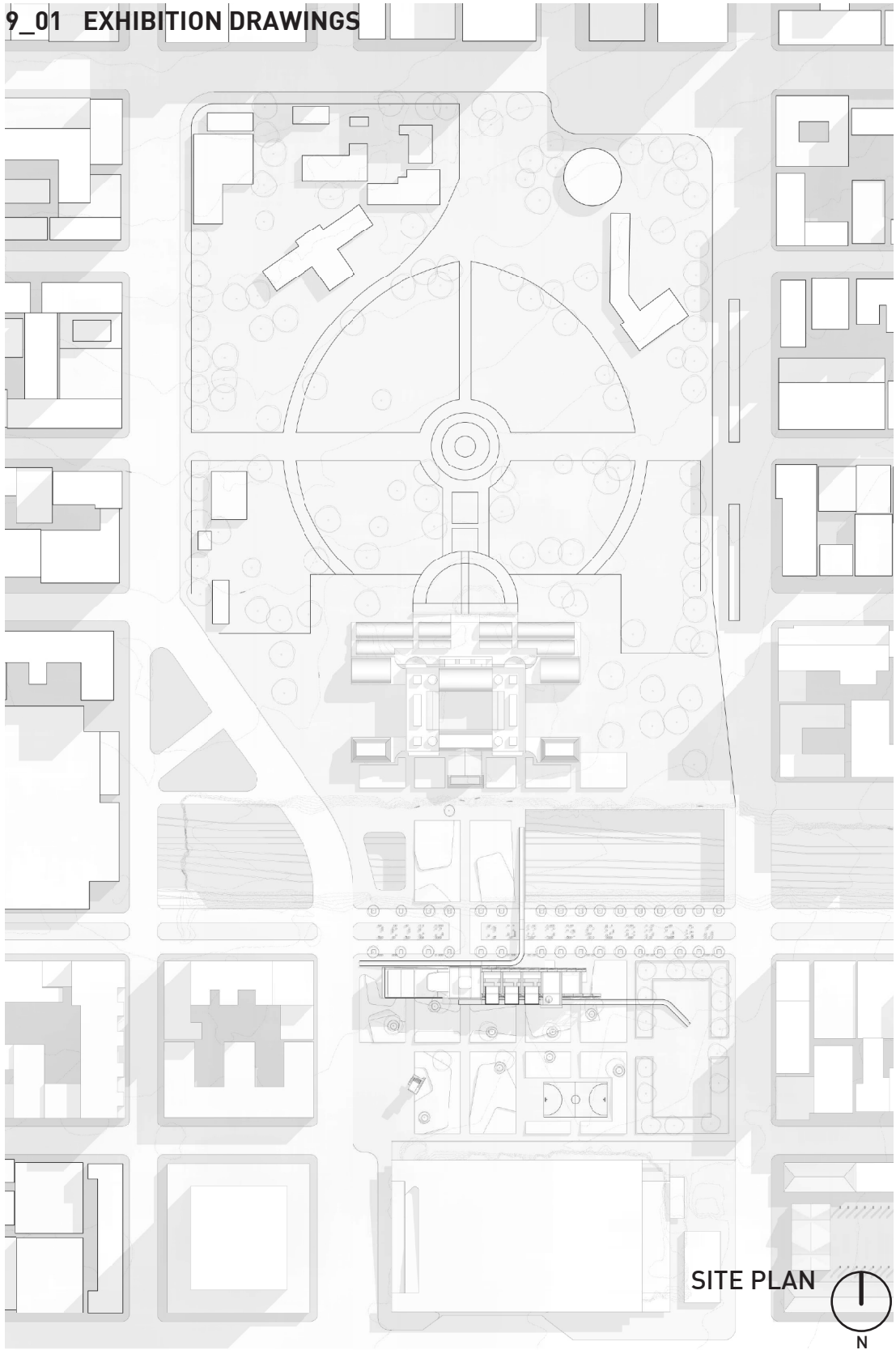


09

EXHIBIT AND CONCLUSION

- 9_01 EXHIBITION DRAWINGS
- 9_02 MODELS PHOTOGRAPHS
- 9_03 CONCLUSION

9_01 EXHIBITION DRAWINGS



SITE PLAN 
N

FIG 69.1 Exhibition drawings

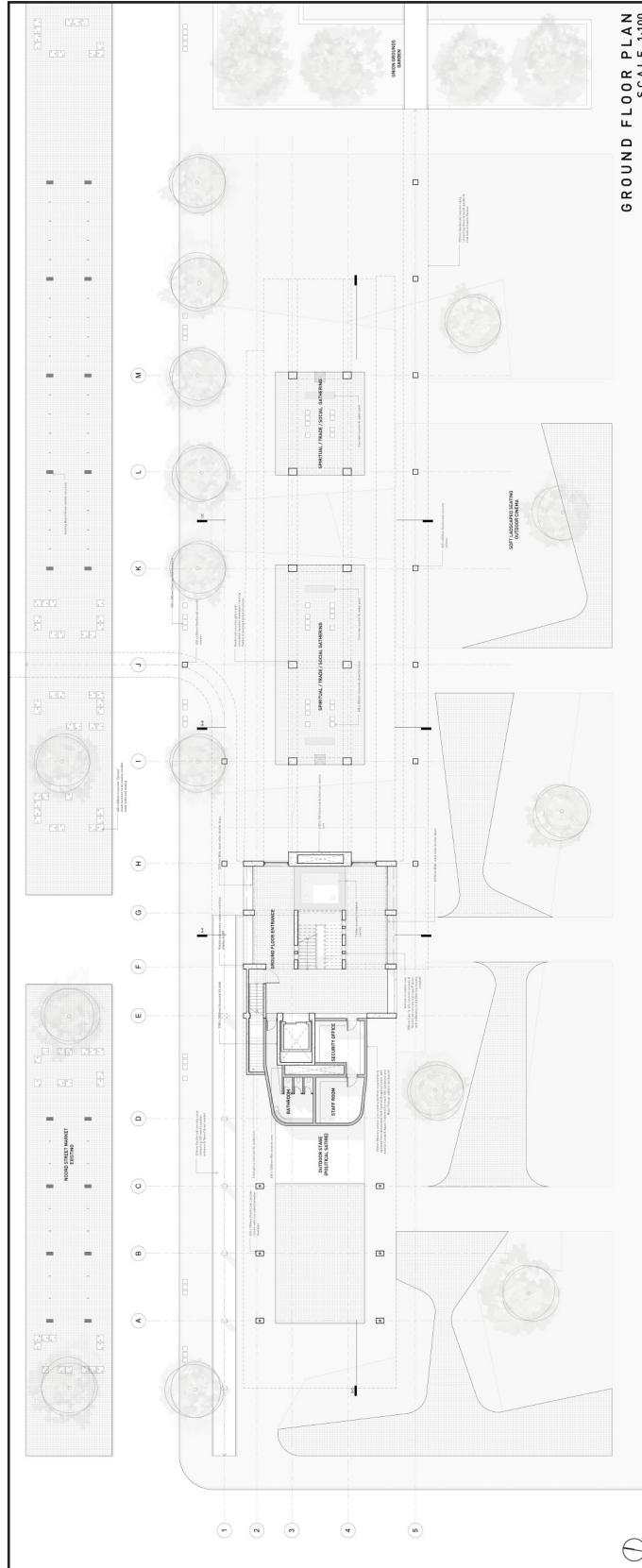


FIG 69.2 Exhibition drawings

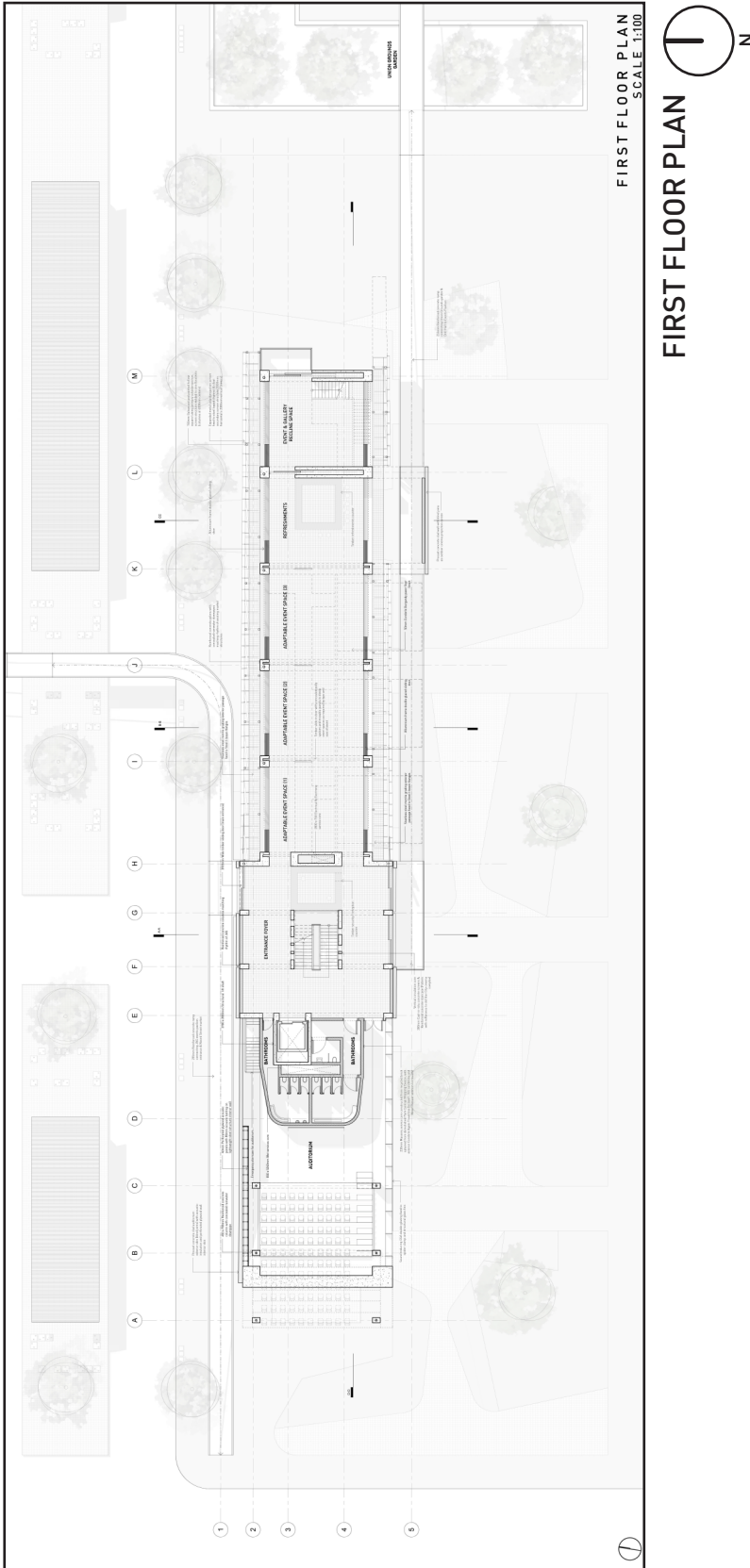
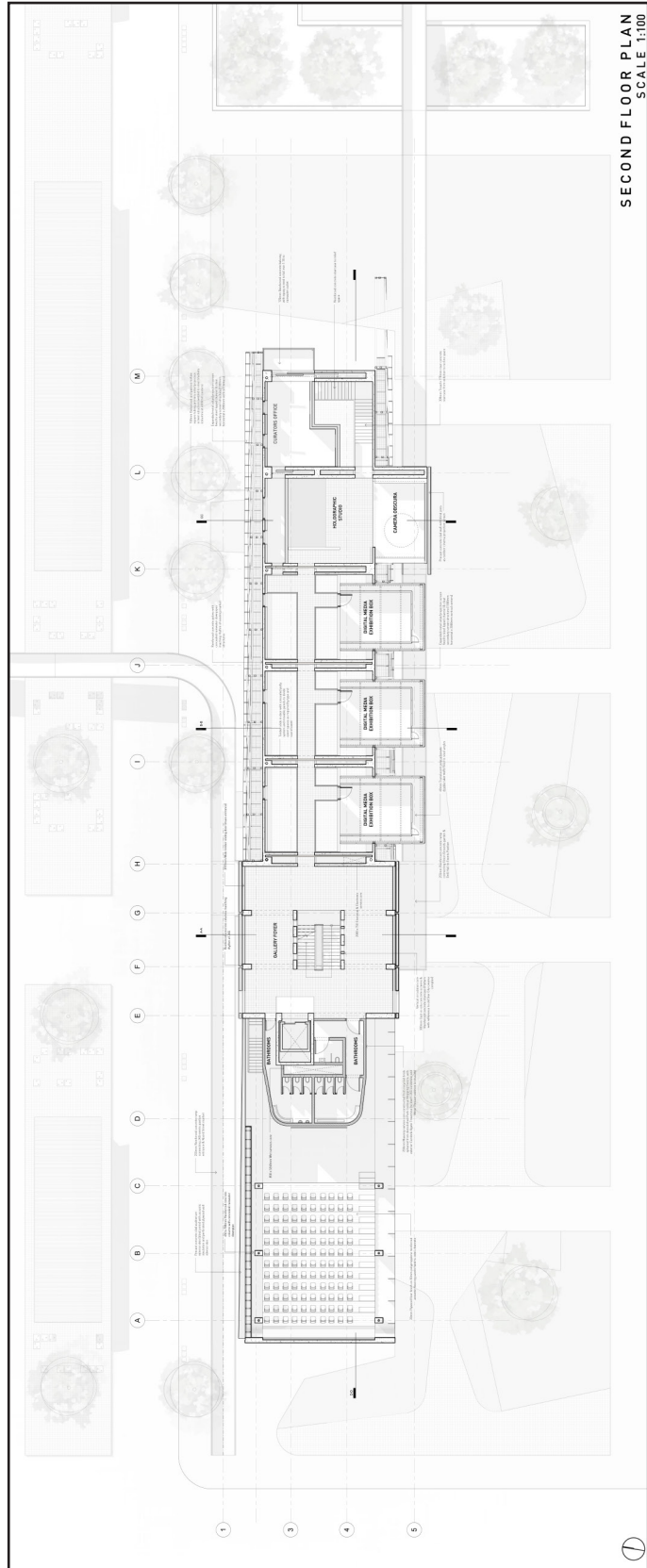
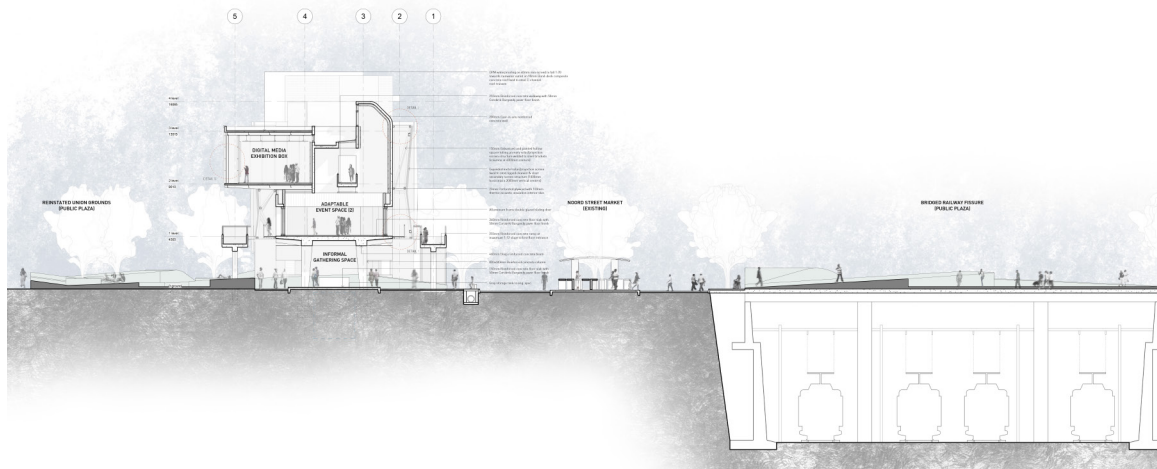
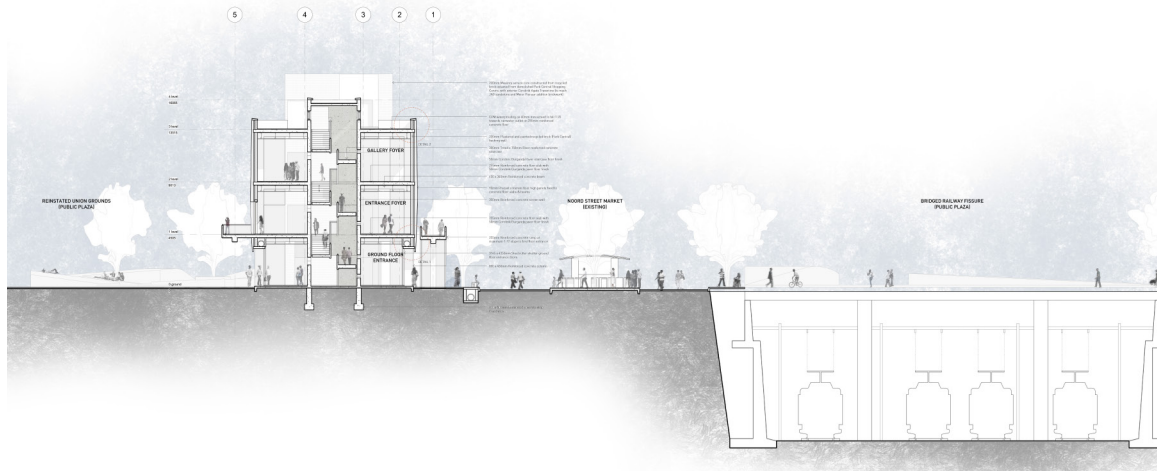


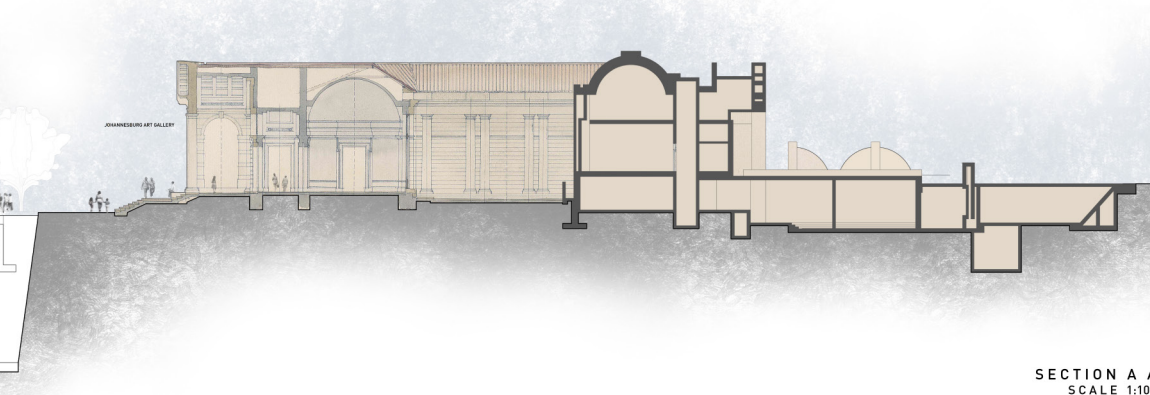
FIG 69.3 Exhibition drawings



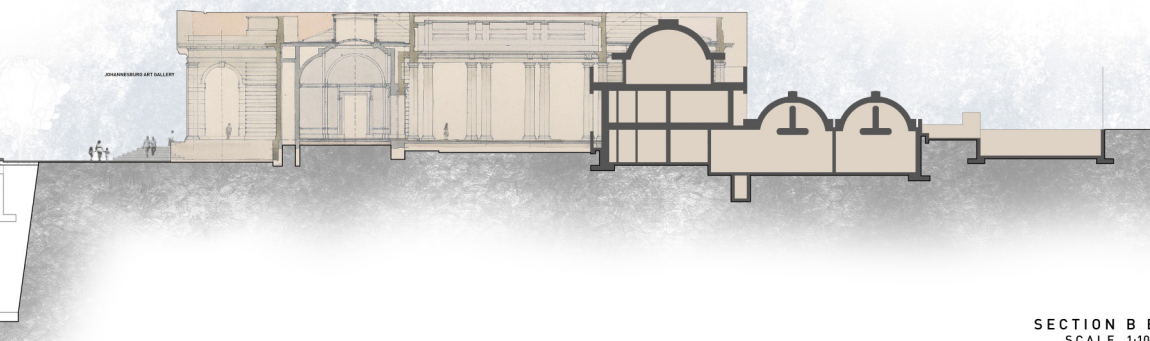
SECOND FLOOR PLAN

FIG 69.4 Exhibition drawings

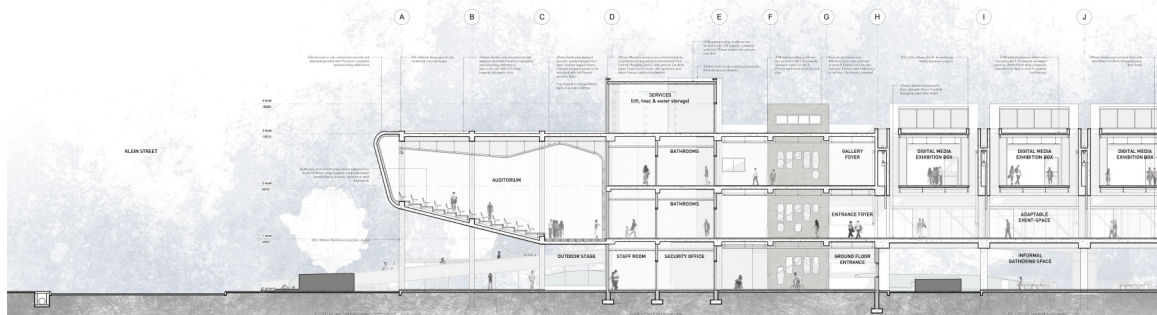
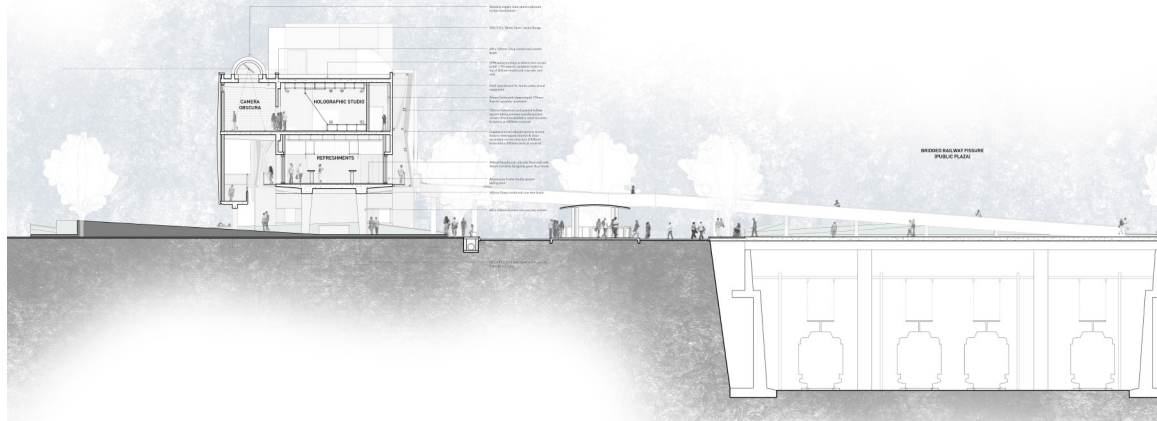


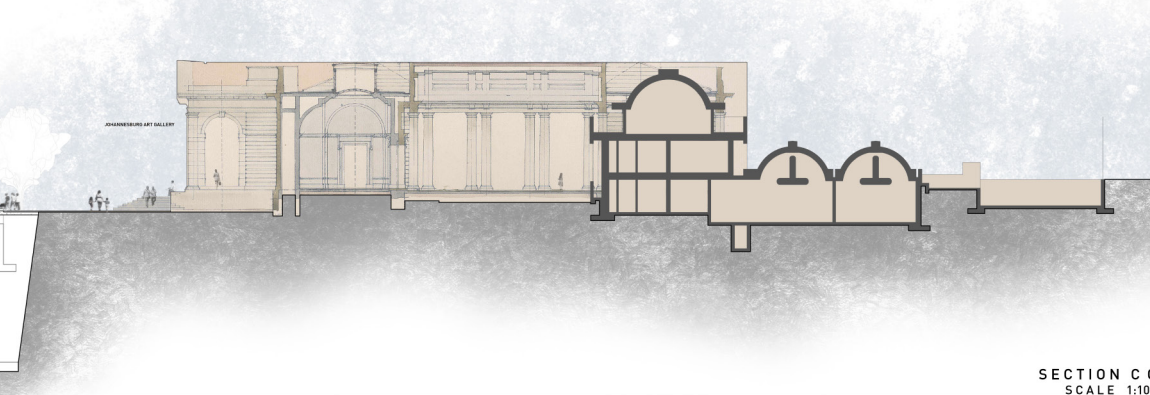


SECTION A A
SCALE 1:100
SECTION A_A

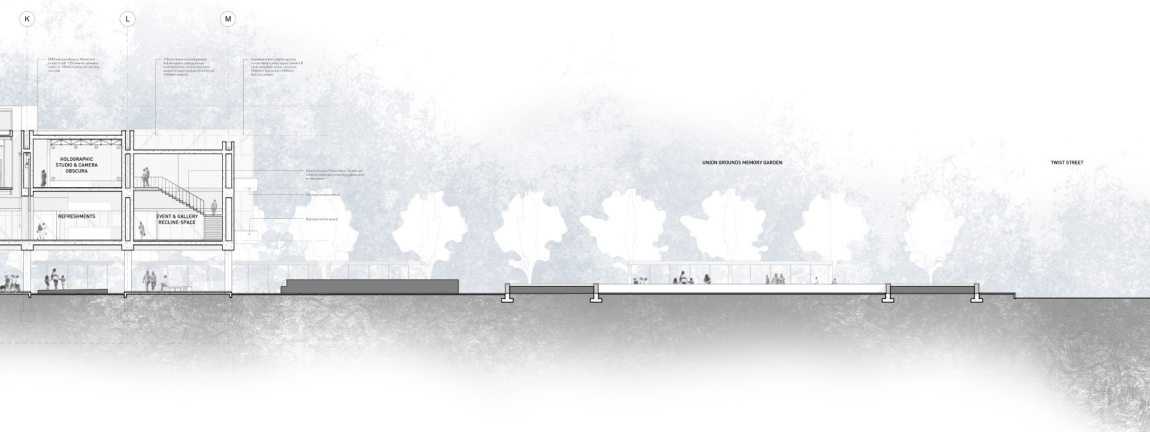


SECTION B B
SCALE 1:100
SECTION B_B

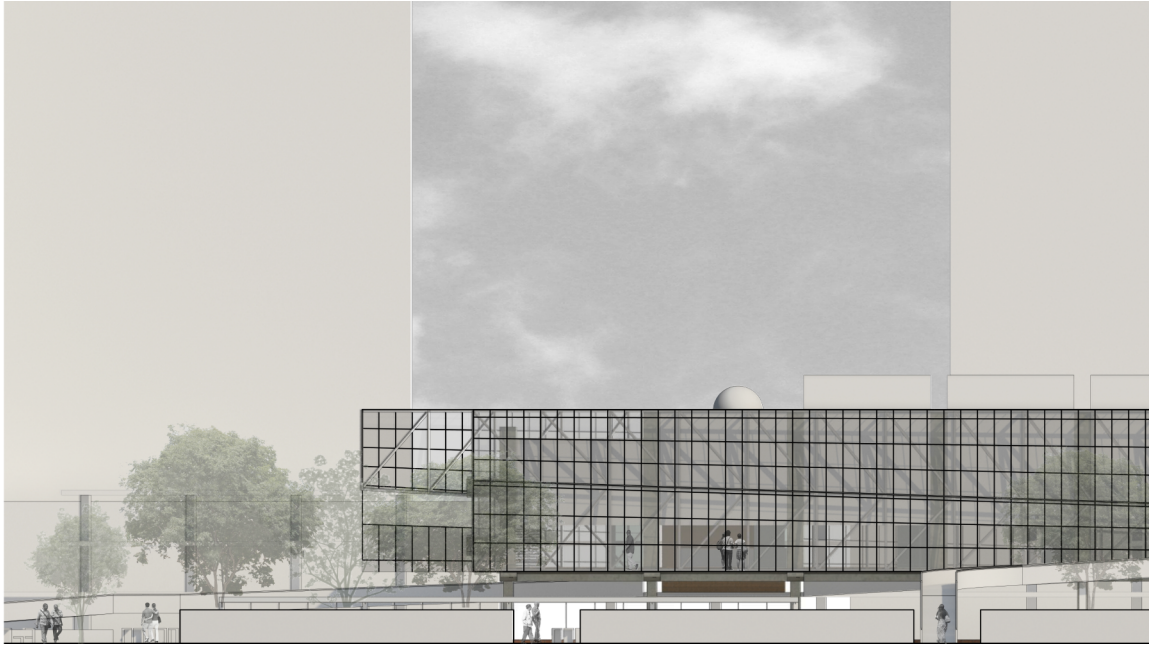


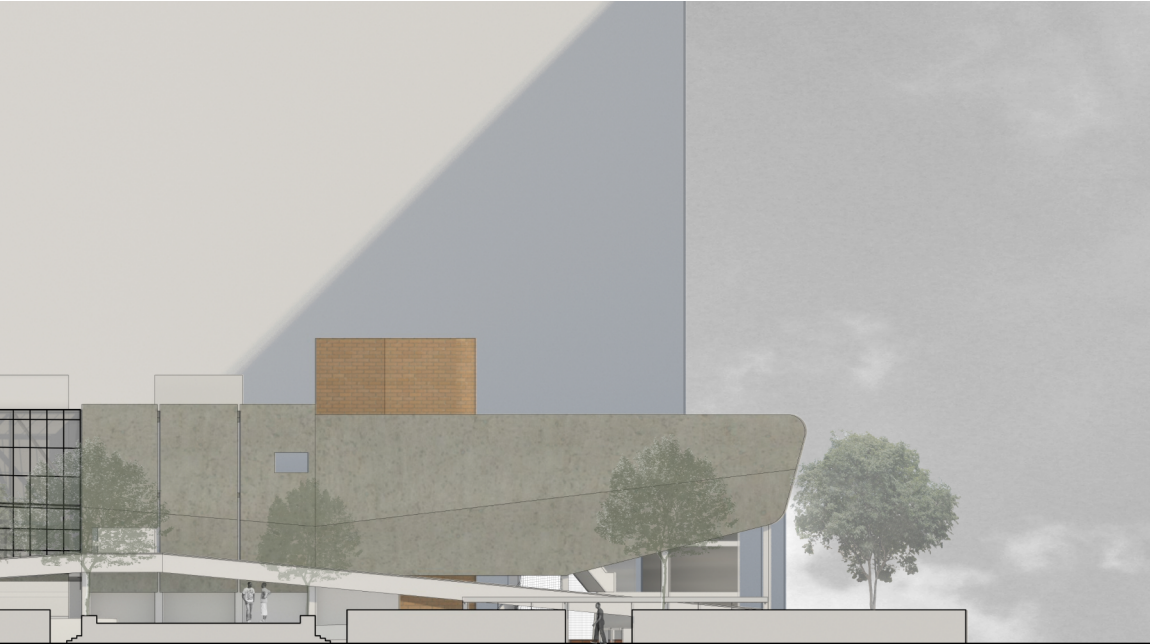


SECTION C C
SCALE 1:100
SECTION C_C

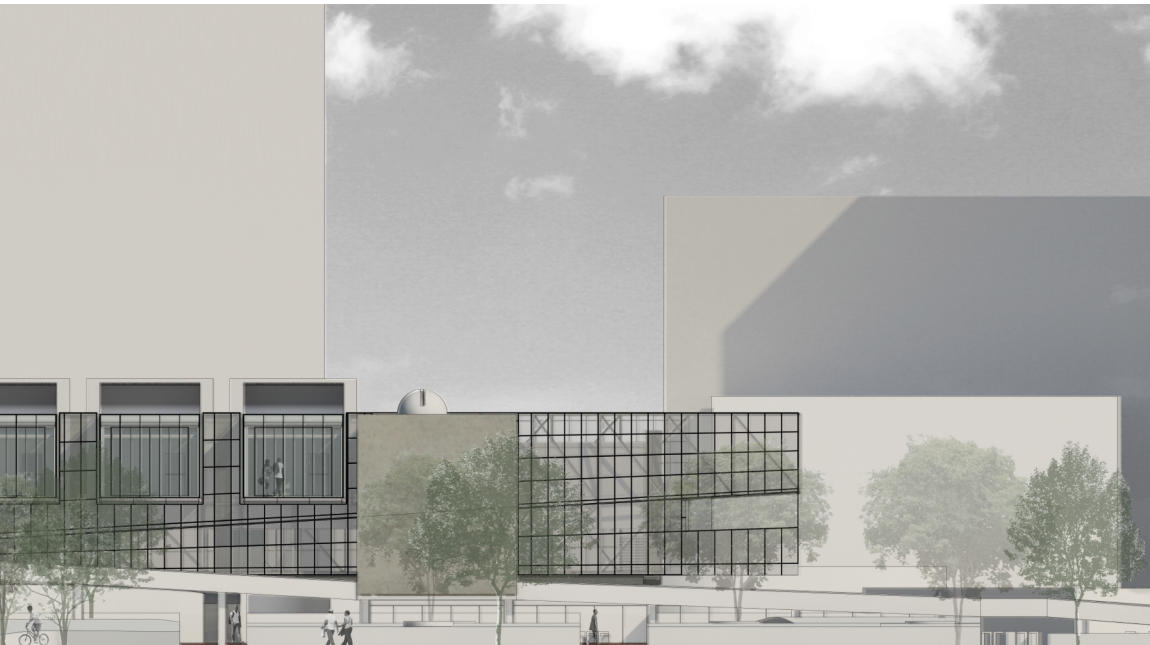


SECTION D D
SCALE 1:100
SECTION D_D

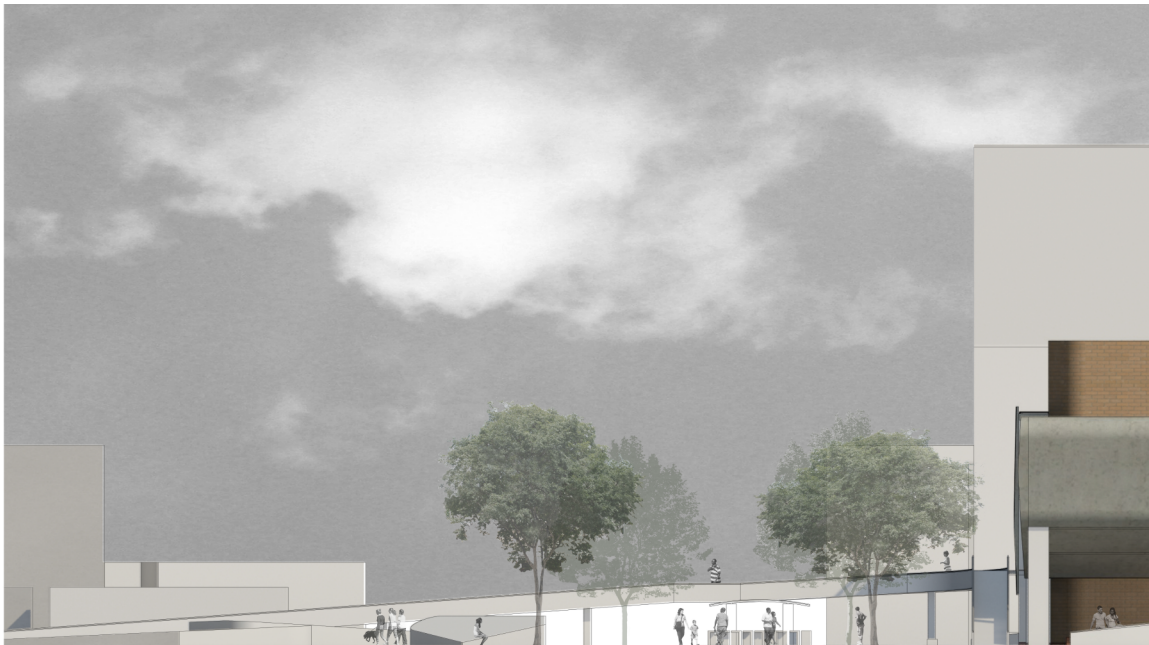
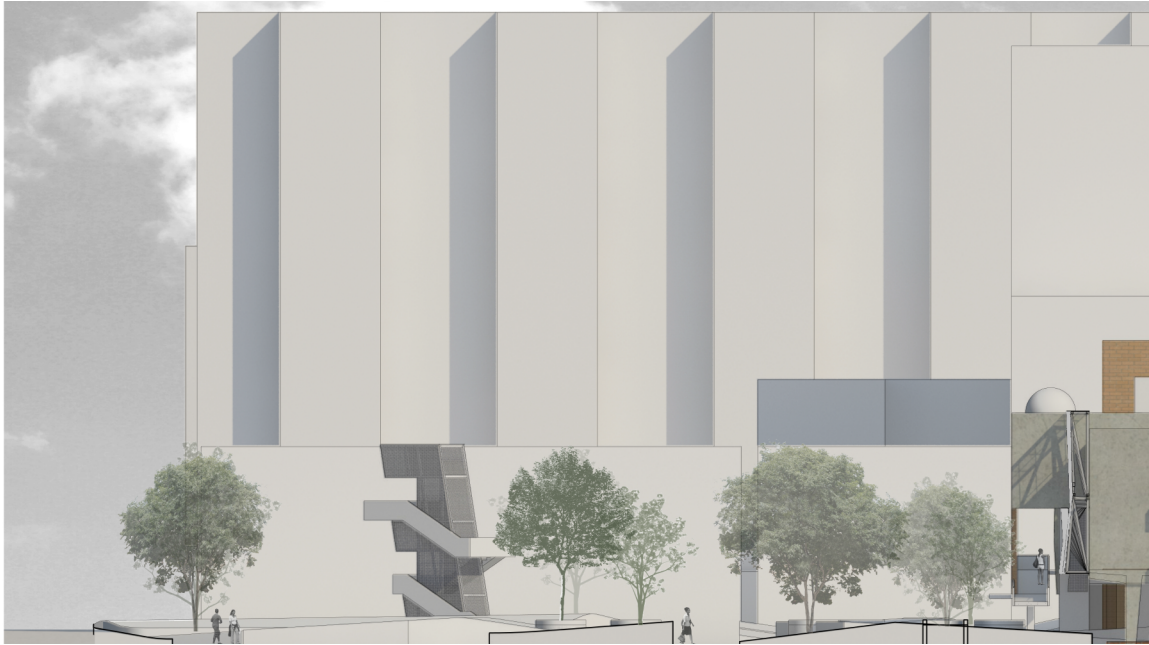


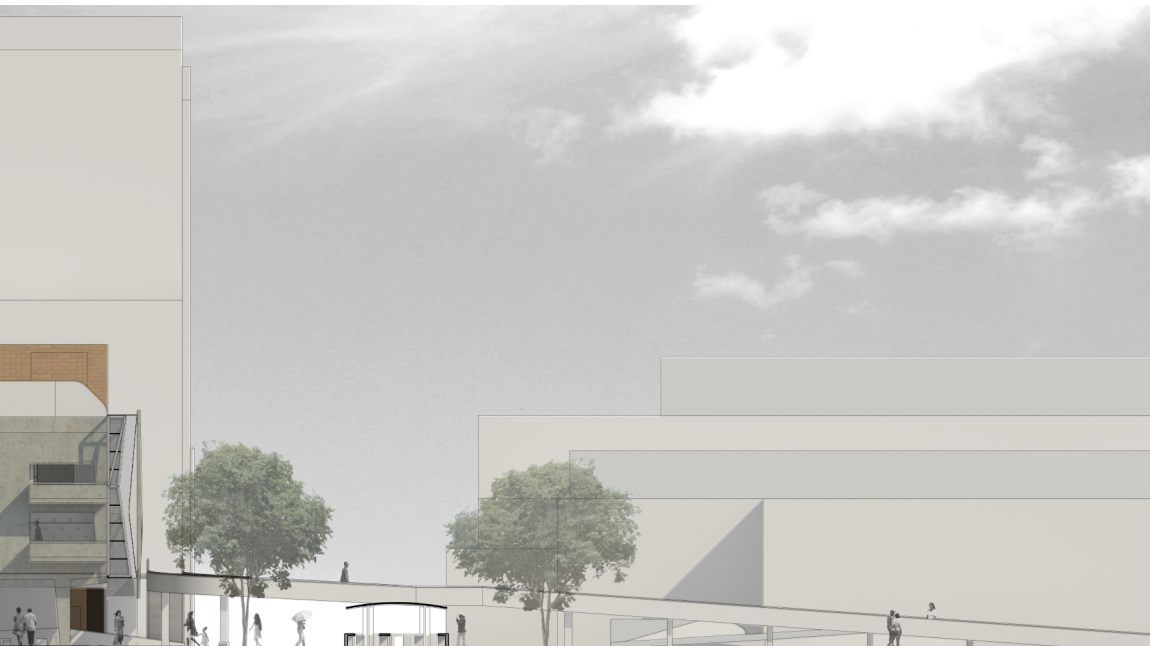


NORTH ELEVATION

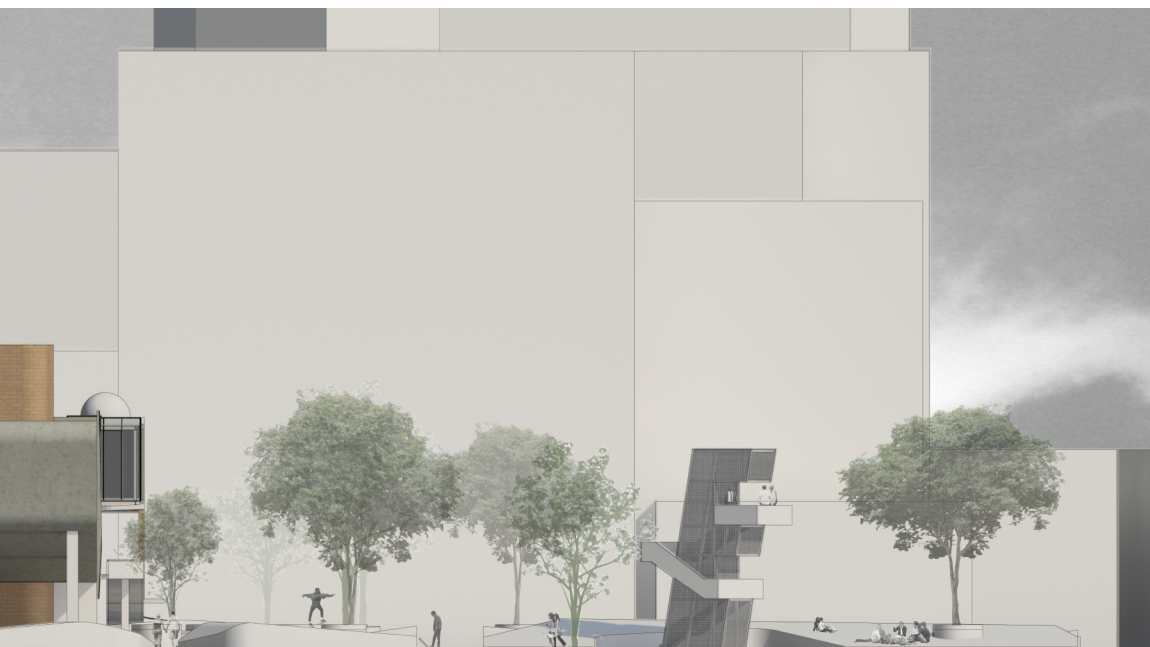


SOUTH ELEVATION



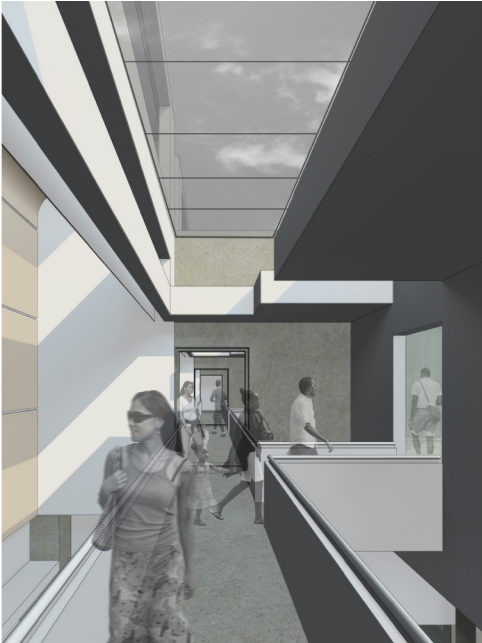


EAST ELEVATION



WEST ELEVATION

PERSPECTIVES



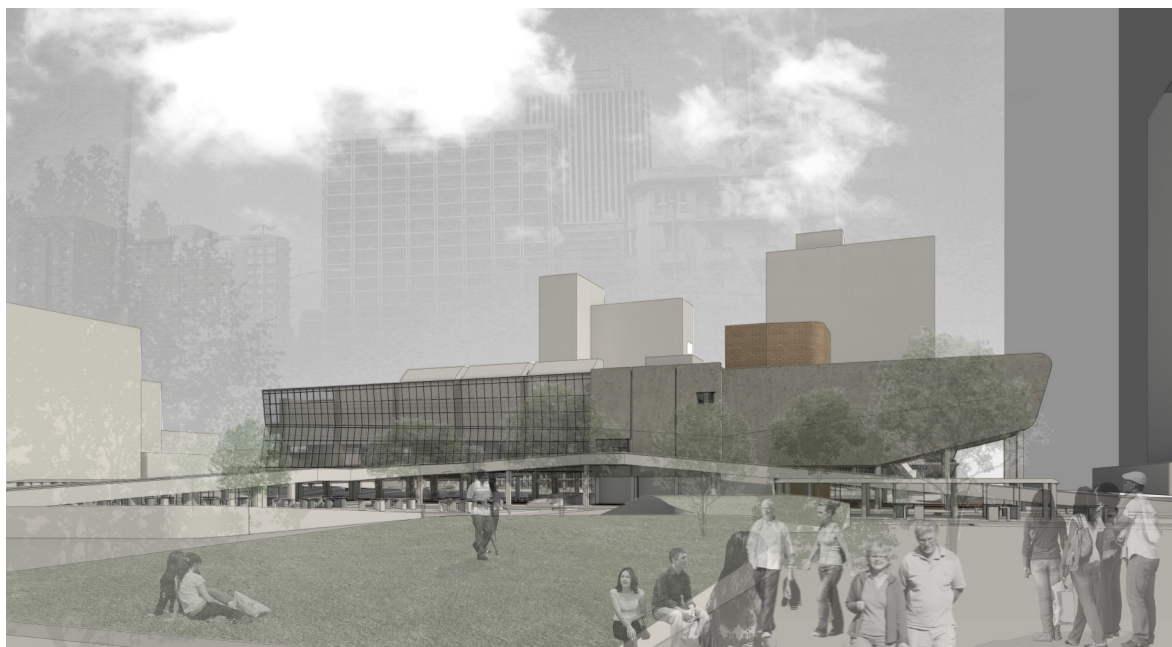


FIG 69.13-69.16 Exhibition drawings

9_02 MODEL PHOTOGRAPHS

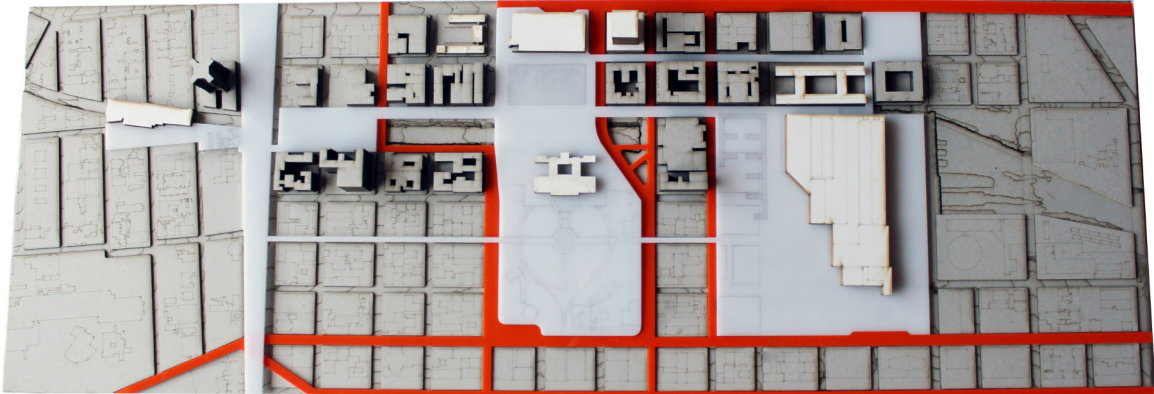


FIG 70.1 Urban vision model (Scale 1:2000)

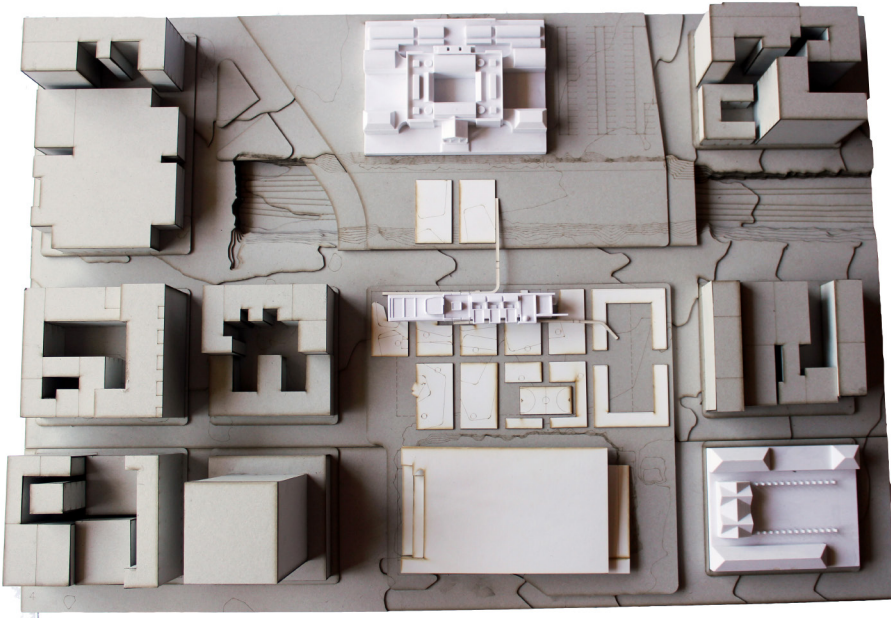


FIG 70.2 Context model (Scale 1:500)



FIG 70.3 Detail model (Scale 1:200)

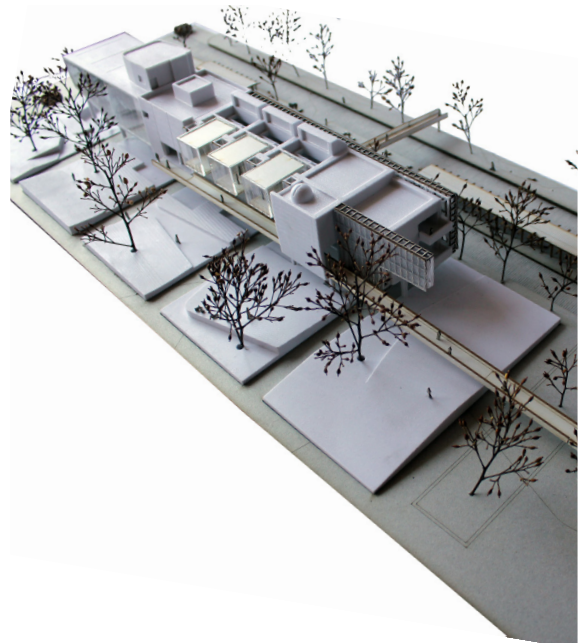


FIG 70.4-70.5 Detail model (Scale 1:200)

9_03 CONCLUSION

This year started of as an experiment. In time the project became of great personal value - an externalisation of the way I think and approach architecture (relevant to this specific moment, time-frame or 'scene' in my life). Needless to say, it was a year of self-discovery and learning: Architecture became the object or mechanism of the Returned Gaze.

Although at first a difficult task, the theme of architecture and the cinematic resulted in a joyous and meaningful exploration, which branched into the themes of memory, the value and relationships of public space with built form, as well as understanding the current urban narrative. These elements were utilized to set up certain parameters which ultimately resulted in the making of architecture.

Throughout the process I consciously attempted (and hope I succeeded) in making architecture that relates to it's place and time.

The most valuable thing I think I have learned this year, is to *see/perceive* a bit better. Once again, I would like to thank everybody who contributed to the realisation of this project. I hope you, the reader enjoyed the reading this book as much as I enjoyed making it!



FIG 71 Railway cutting 1940, Johannesburg Art Gallery

10

REFERENCES

10_01 REFERENCE LIST

10_01 REFERENCE LIST

Ager, R. (author). 2014. Meaning of the Monolith Revealed. [Video recording]. USA. Collative Learning Ltd.

Arad, H., Sonnino, S. and Karlinsky, S. 2009. Framing Space — Cinematic space as an instrument for understanding the human-space relationship. [Online]. Available at:
<http://library.iated.org/view/ARAD2009FRA>
Accessed 20 July 2014.

Bordwell, D. and Thompson, K. 2003. Film History: An Introduction. New York: McGraw-Hill.

Clarke, B (ed). 1997. The Cinematic City. New York: Routledge.

Chambers, I. 1997. Maps, movies, music and memory: The Cinematic City. Edited by Clarke, B. New York: Routledge.

Da Costa, M. 2007. Surfaces & services: A public space for information, communication and discussion. Unpublished M(Arch) Prof dissertation, Department of Architecture, University of Pretoria, Pretoria.

Dangor, A. 1999. Apartheid and the death of South African cities. In Blank_Architecture, apartheid and after. Edited by Judin, H. and Vladislavic, I. Rotterdam: NAI.

Dasgupta, R. 2006. Maximum Cities. [Online]. Available at:
<http://www.newstatesman.com/node/152859>
Accessed 24 April 2014.

Derrida, J and Eisenman, P. 1997. Chora L Works. Edited by Kipnis, J. and Leeser, T. New York: Monacelli Press.

Department of Arts and culture. 2013. Vision, Mission and Values. [Online]. Available at:
<https://www.dac.gov.za/8-2-1-vision-mission-values>
Accessed 6 June 2014.

Dixon, W.W. 1995. It looks at you: The Returned Gaze of Cinema. New York: State University of New York.

Duque, K. 2011. Classical Architecture: Art Museum of São Paulo / Lina Bo Bardi. [Online]. Available at:
<http://www.plataformaarquitectura.cl/cl/02-98467/clasicos-de-arquitectura-museo-de-arte-de-sao-paulo-lina-bo-bardi>
Accessed 8 July 2014.

Frearson, A. 2011. BMW Guggenheim Lab by Atelier Bow-Wow. [Online]. Available at:
<http://www.dezeen.com/2011/08/04/bmw-guggenheim-lab-by-atelier-bow-wow/>
Accessed 6 July 2014.

Graafland, A (ed). 2012. African Perspectives- [South] Africa: City, Society, Space, Literature and Architecture. Edited by Bruyns, G. and Graafland, A. Rotterdam: 010 Publishers, 88-109.

Kepes, G. 1995. Language of vision. New York: Dover.

Homer, S. 2005. Jacques Lacan. Oxford: Routledge.

Jansen, E. 2012. Wanderers among ruins: Walking and driving in Johannesburg novels. In African Perspectives — CHECK [South] Africa: City, Society, Space, Literature and Architecture. Edited by Bruyns, G. and Graafland, A. Rotterdam: 010 Publishers, 110–137.

Keleketla Media Arts. 2014. Who we are - context. [Online]. Available at:
<http://keleketla.org/>
Accessed 8 August 2014.

Kofman, S. 1999. Camera Obscura: Of ideology. USA: Cornell University Press.

Kilbourn, J.A. 2000. Cinema, Memory, Modernity: The Representation of Memory from the Art Film to Transitional Cinema. London: Routledge.

Lagae, J. 2012. Towards a Rough Guide for Lubumbashi, Congo. Rethinking 'shared built heritage' in a former Belgian colony. In African Perspectives- [South] Africa: City, Society, Space, Literature and Architecture. Edited by Bruyns, G. and Graafland, A. Rotterdam: 010 Publishers, 88-109.

Latilla, M. 2014. History of Braamfontein part 1. [Onlin]. Available at:
<http://johannesburg1912.wordpress.com/2014/07/27/history-of-braamfontein-pt-1/>
Accessed 10 July 2014

Leach, N. 1997. Rethinking architecture. A Reading in Cultural theory. London: Routledge.

Leyds, G.A. 1964. A History of Johannesburg. Nasionale Boekhandel: Cape Town.

Lo, A. 2011. Transparency: Layering of planes, layering of spaces. [Online] Available at:
<https://architecturality.wordpress.com/2010/10/20/transparency-i-layering-of-planeslayering-of-spaces/>
Accessed 15 June 2014.

Lokko, L. 2012. Suspectculture. African Perspectives- [South] Africa: City, Society, Space, Literature and Architecture. Edited by Bruyns, G. and Graafland, A. Rotterdam: 010 Publishers, 110–137.

Massey, D. 2005. For Space. London: Sage.

Nora, P. 1989. Between Memory and History: Les Lieux de Mémoire. California Press: USA.

Pallasmaa, J. 2000. The Architecture of Image: Existential Space in Cinema. [Online]. Available at:
http://www.ucalgary.ca/ev/designresearch/publications/insitu/copy/volume2/imprintable_architecture/Juhani_Pallasmaa/index.html

Accessed 20 July 2014.

Pallasmaa, J. 2004. Geometry of Terror: Alfred Hitchcock's Rear Window. In Chora volume four: Intervals in the philosophy of architecture. Edited by Perez-Gomez, A. and Parcell, S. Canada: McGill-Queen's University, 211-244.

Robinson, J. 1999. (Im)mobilizing space – dreaming of change. In Blank_Architecture, apartheid and after. Edited by Judin, H. and Vladislavic, I. Rotterdam: NAI: (163 – 171).

Slutzky, R. 1982. The Mathematics of the Ideal Villa and Other Essays. Edited by Rowe, C. Cambridge: M.I.T Press.

Statistics South Africa. 2014. Sensus data Joubert Park. [Online]. Available at:

<http://census2011.adrianfrith.com/place/798015088>

Accessed 8 June 2014.

Tawa, M. 2010. Agencies of the frame. Tectonic Strategies in Cinema and Architecture. United Kingdom: Cambridge Scholars Publishing.

Tschumi, B. 1990. Questions of Space: Lectures on architecture. London: Architecture Association.

Johannesburg Development Agency. 2013. Building a better city. [Online] Available at

<http://www.jda.org.za/>

Accessed 6 June 2014.

Joubert Park Project. 2009. Urban Scenographies. [Online]. Available at:

<http://www.eternalnetwork.org/scenographiesurbaines/index.php?cat=joburgjpp>

Accessed 8 June 2014.

Zizek, S. (author). 2006. A pervert's guide to cinema. [Video recording]. United Kingdom. P Guide Ltd.

Interviews

Deckler, T. August 2012.

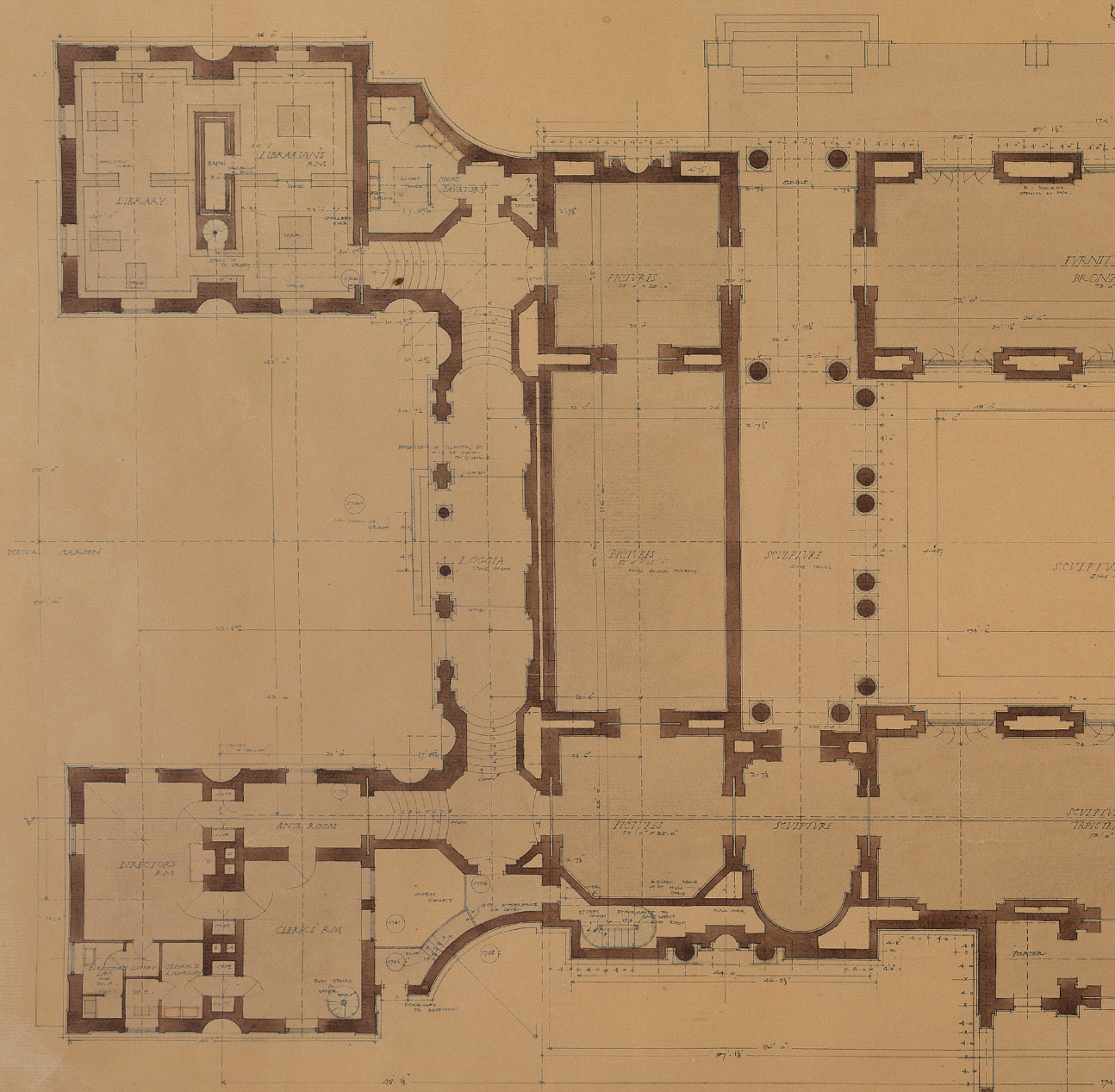
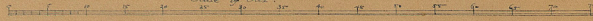
11

APPENDIXES

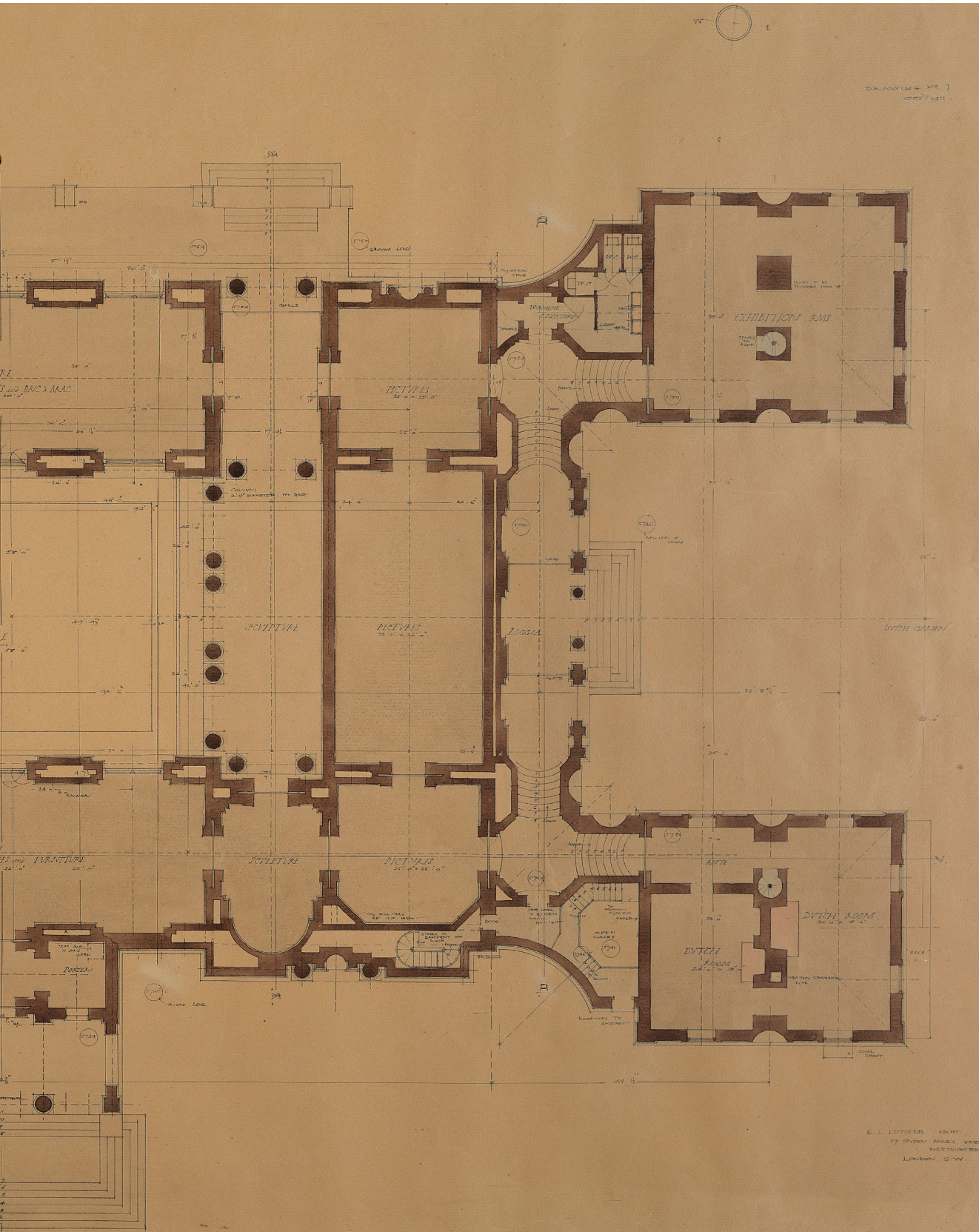
11_01 JOHANNESBURG ART GALLERY EXHISTING DRAWINGS

JOHANNESBURG ART GALLERY

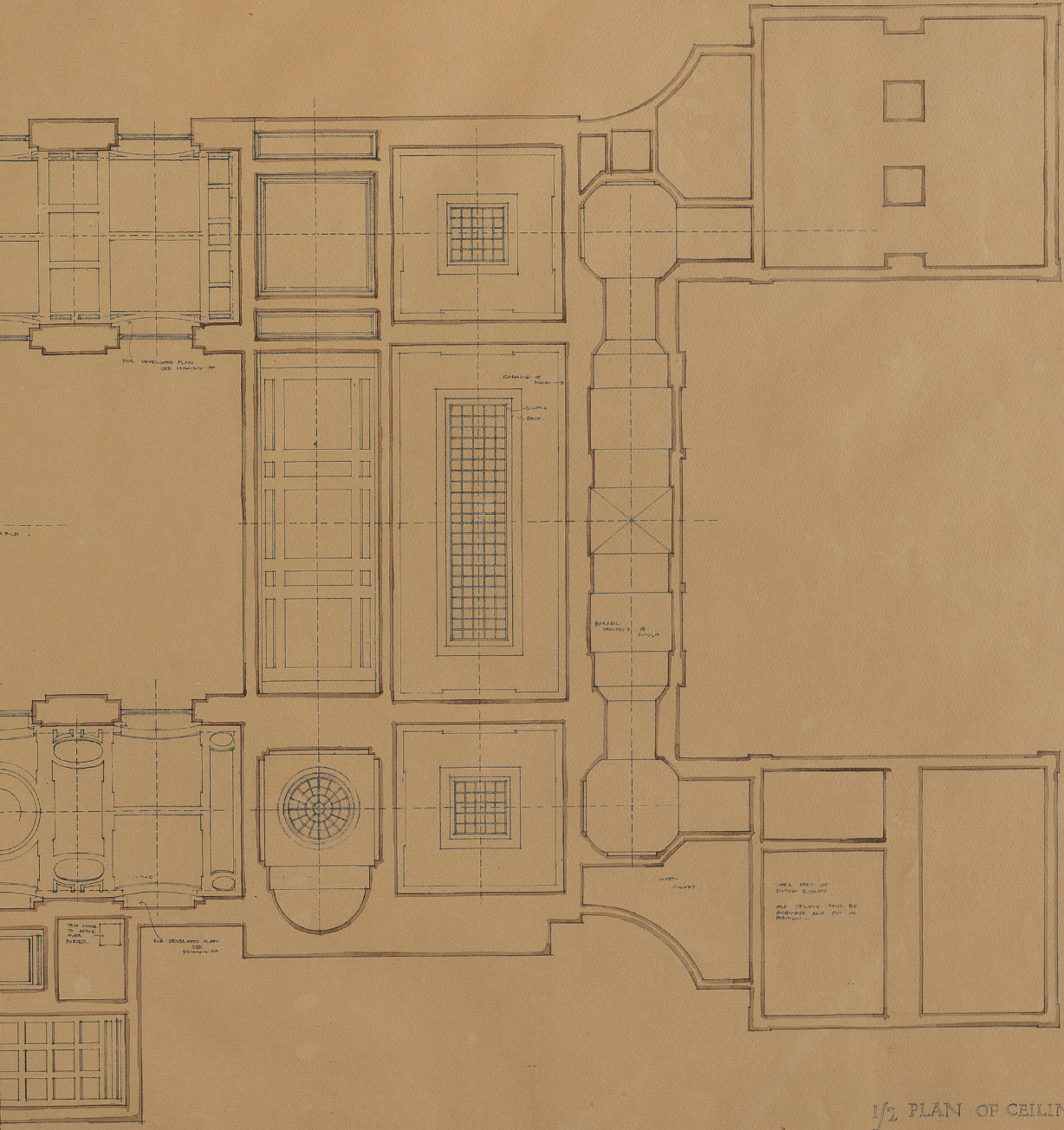
Scale of Feet



GROUND PLAN



DRAWING NO. 2
SEP. 1911

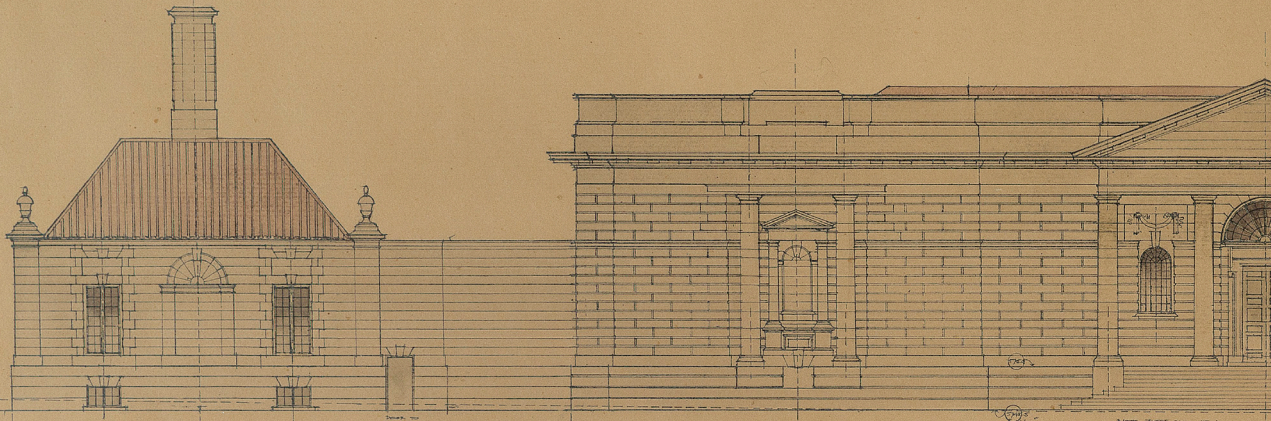
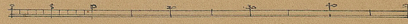


1/2 PLAN OF CEILINGS

E. J. LYNCH, ARCHT.
17 GERRARD AVENUE E.
WESTMINSTER
LONDON, ENGL.

JOHANNESBURG ART GALLERY

Scale of Feet

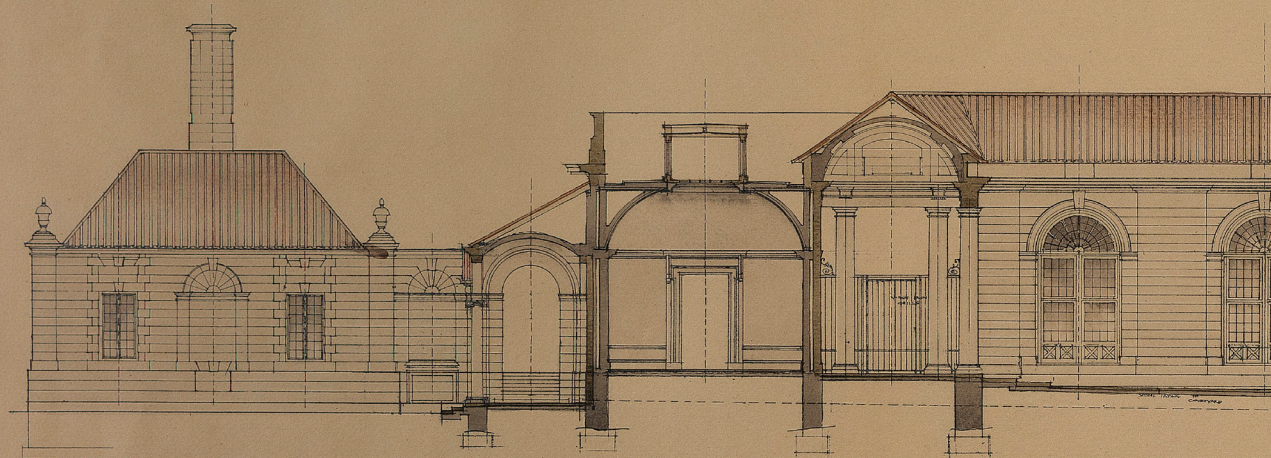
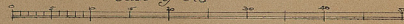


SOUTH ELEVATION

NOTE: THERE SHALL BE NO
INTERCOURSE BETWEEN THE
PLUMBING TO BE DONE FIRST.

JOHANNESBURG ART GALLERY

Scale of Feet



SECTION OF CENTRE LINE
LOOKING NORTH

DRAWING NO 3
OCT. 1911

