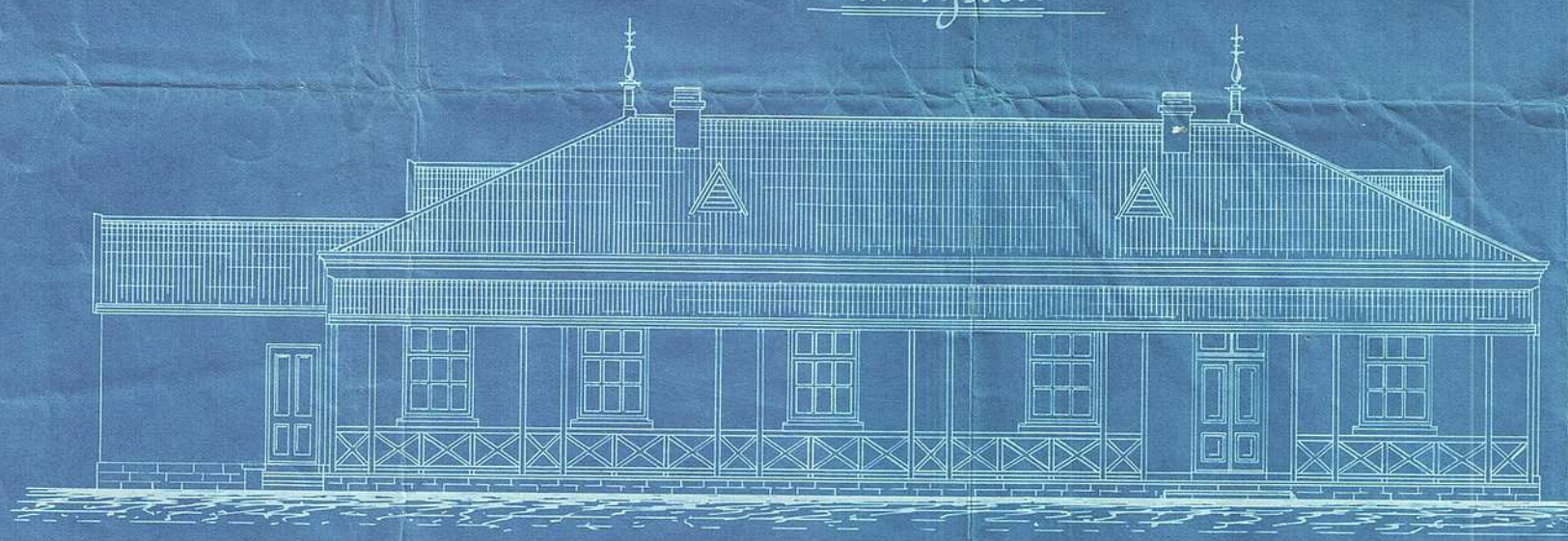


R 31/19/91 R 10/13/91

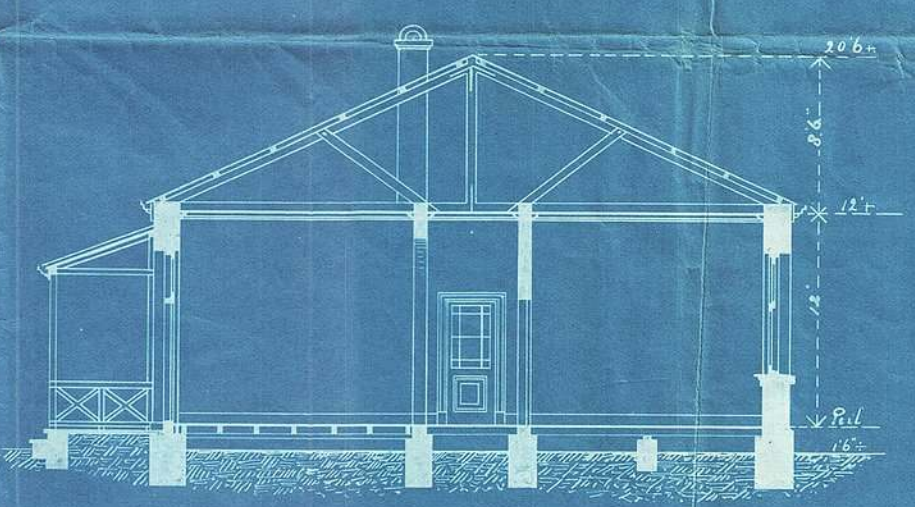


# Hospitaal te Lydenburg.

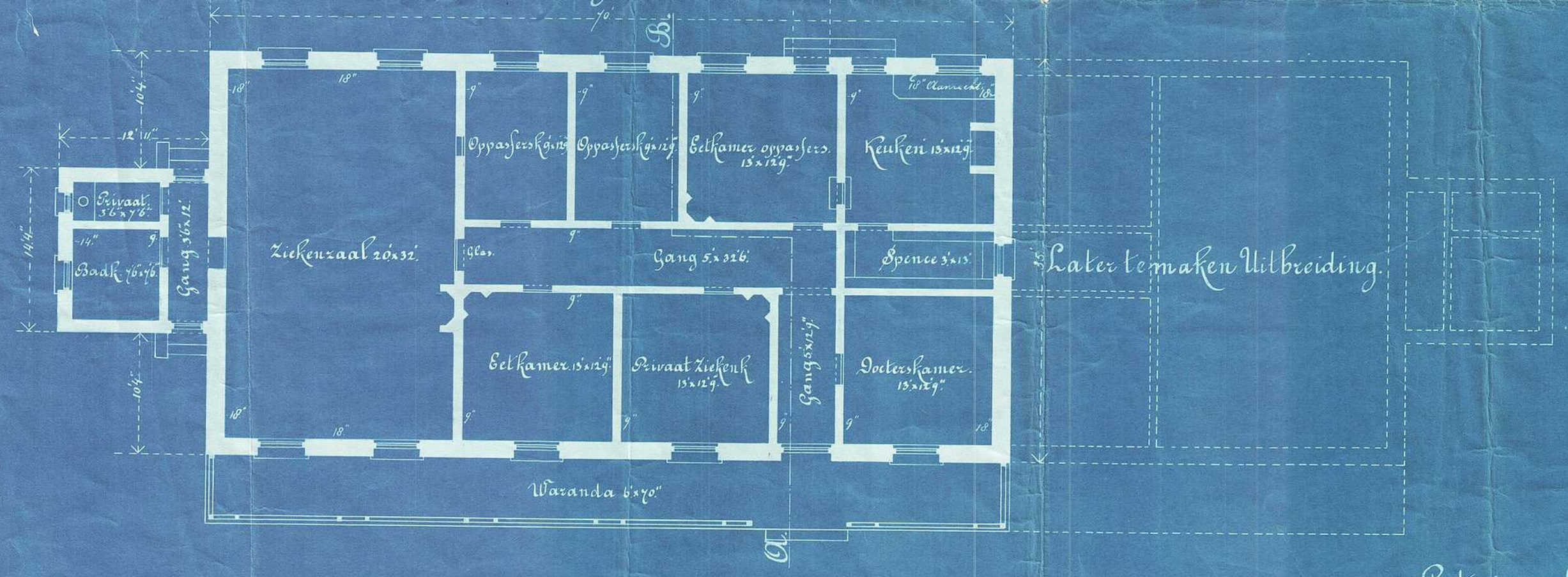
Voorgevel.



Doorsnede over A.B.



Plattegrond.



Schaal 1/8 duim per voet.  
0' 10' 20' 30' 40'

Pretoria 23 September 1892.

*P. W. W. W.*  
Gouv. Ing. Architect.