

STUDY SKINS FROM THE ZOOLOGICAL SURVEY COLLECTION.



Fig.111.

*Cynictis penicillata ogilbyi* ( A. Smith).

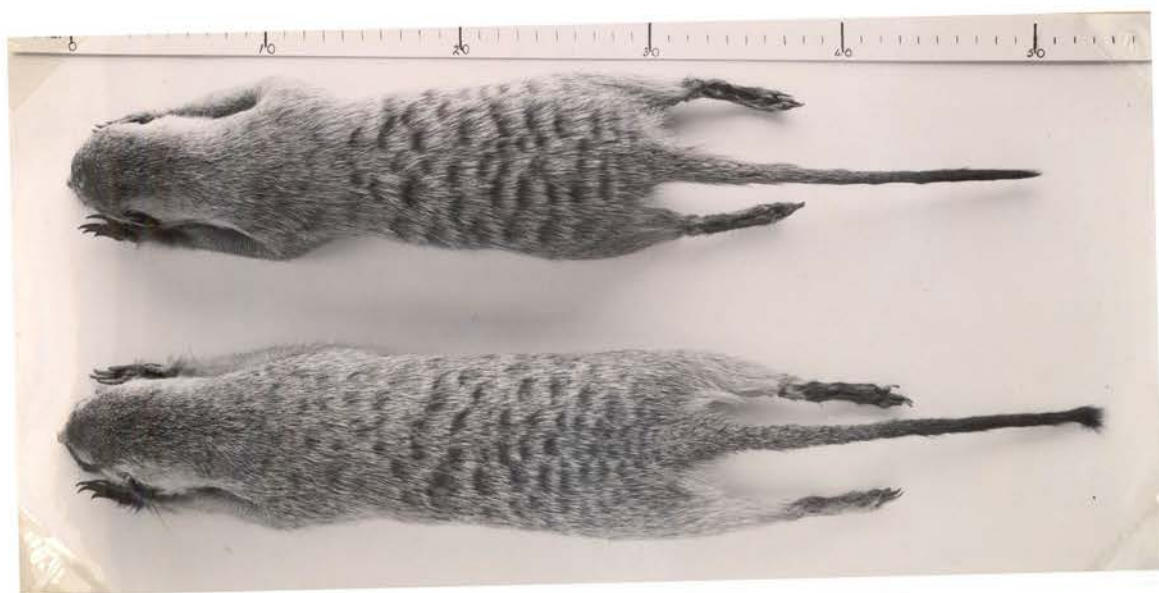


Fig.1V.

*Suricata suricatta hamiltoni*(Thos. and Schw.).

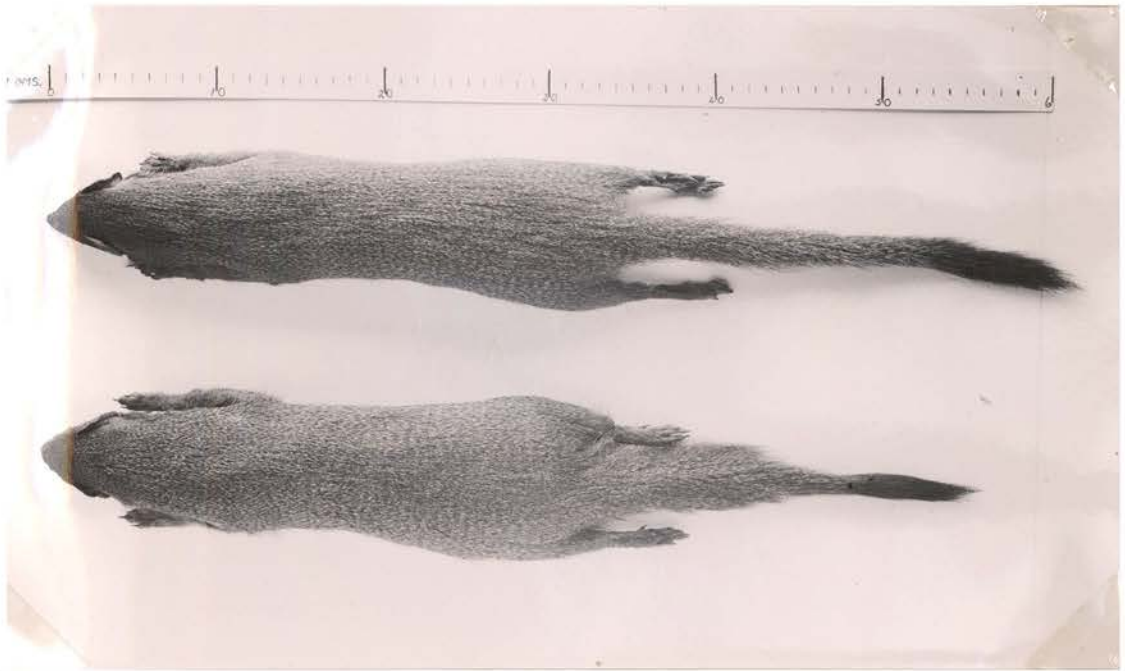


Fig.V

*Myonax caui caui*.(A. Smith)

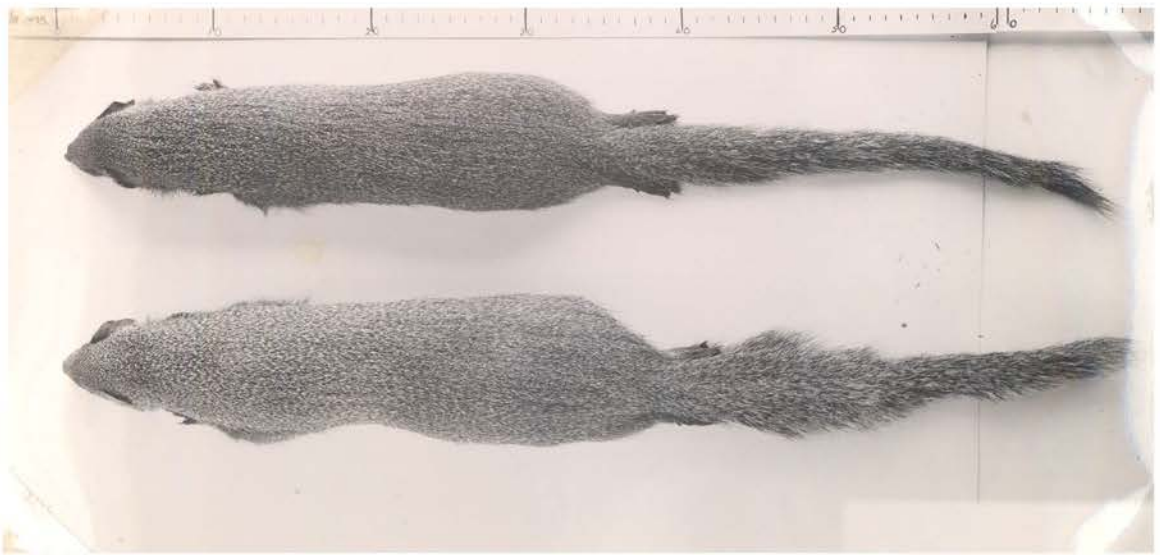


Fig. VI.

*Myonax pulverulentus pulverulentus*(Wagner).



Fig. Vll

*Ictonyx striatus striatus*(Parry)



Fig.Vlll.

*Geosciurus capensis capensis*(Kerr).



Fig. IX.

*Genetta felina felina*(Thunberg).



Fig. X.

*Genetta tigrina tigrina*(Schreber).

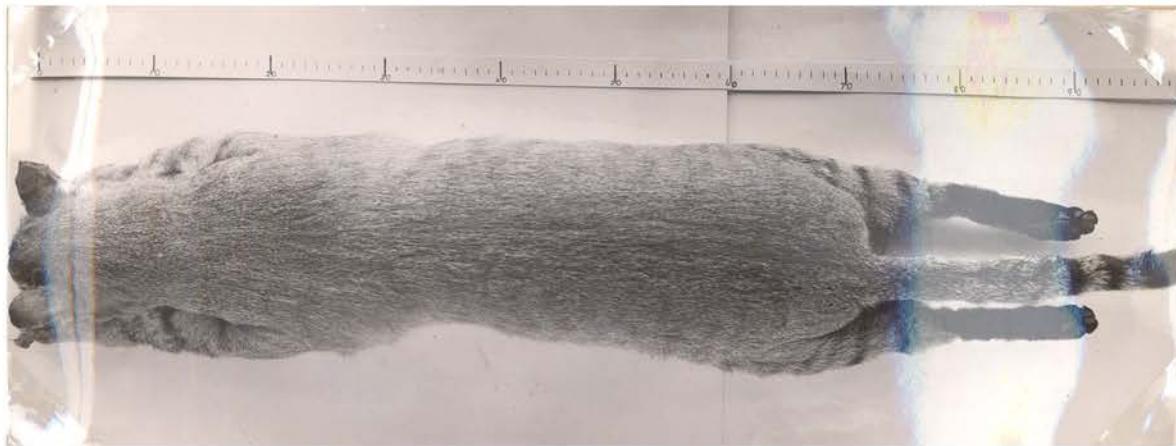


Fig. XI.

*Felis ocreata rusticana* (Thomas).

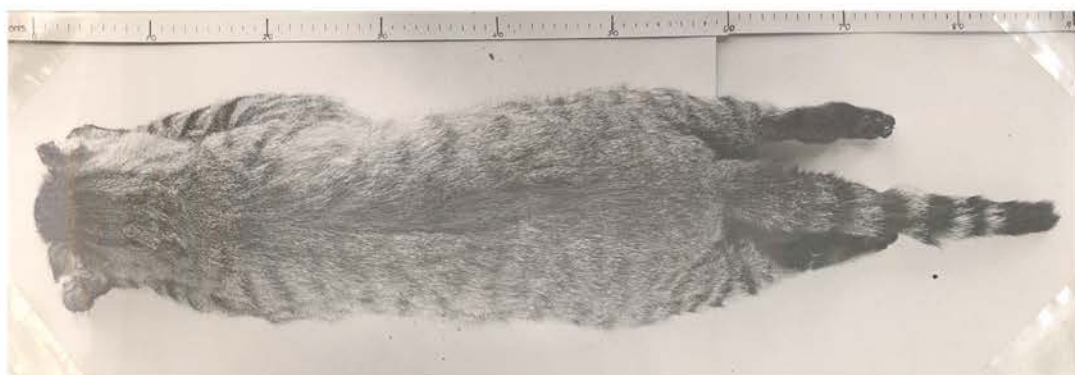


Fig. XII.

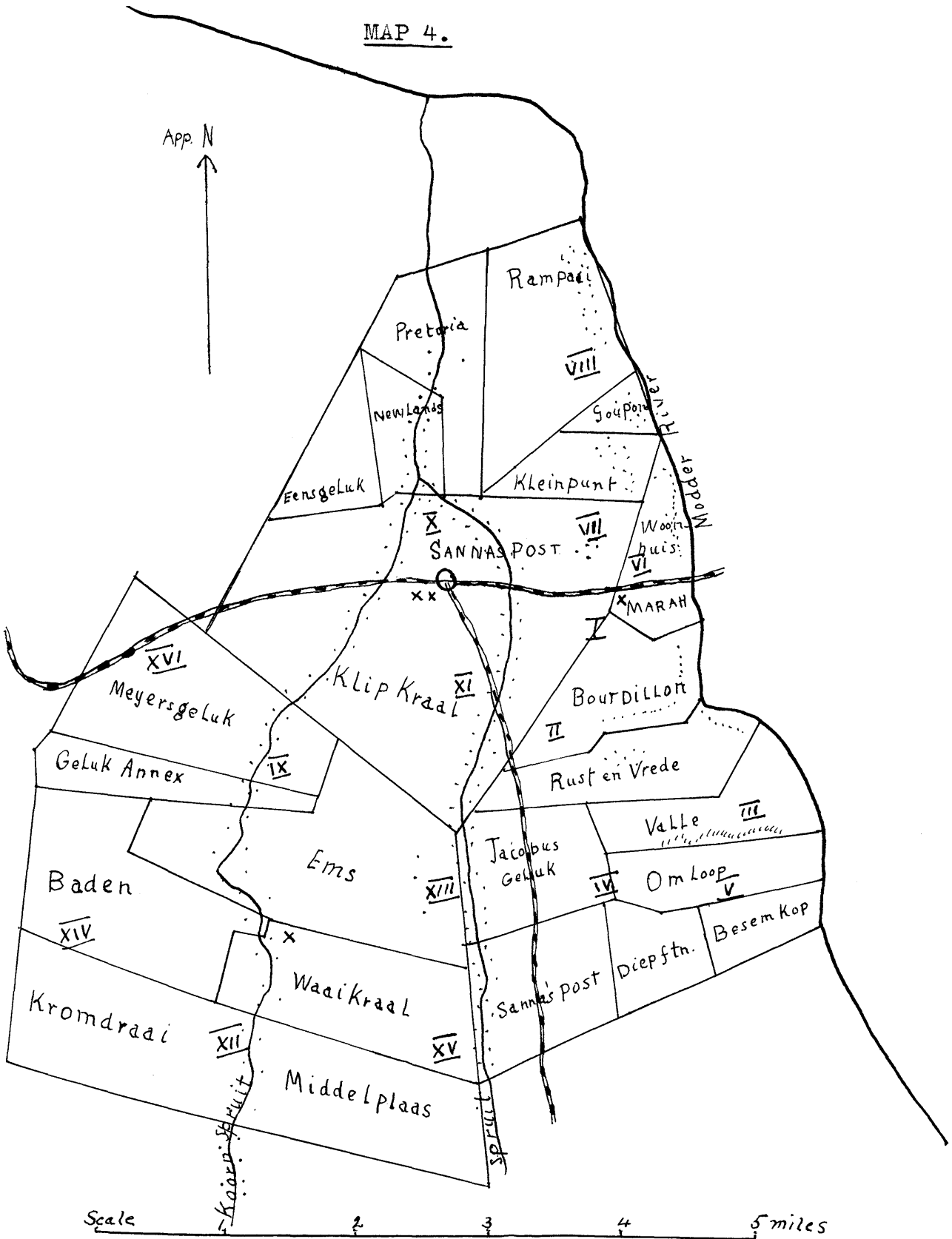
*Felis ocreata caffra* (Desma and Rest).



Sketch Map No. 3.

Portion of Vryburg District, showing Rabies centres.  
 (Boundaries of infected areas in black lines).

MAP 4.



Sketch-Map of Sannahs post-Waai kraal Area.

Reference:

..... Vleis, showing where the majority of meer-cat colonies were located.

X Points where rabid animals were found and suspected cases occurred.

I, II, etc. Represent the sections treated in sequence.

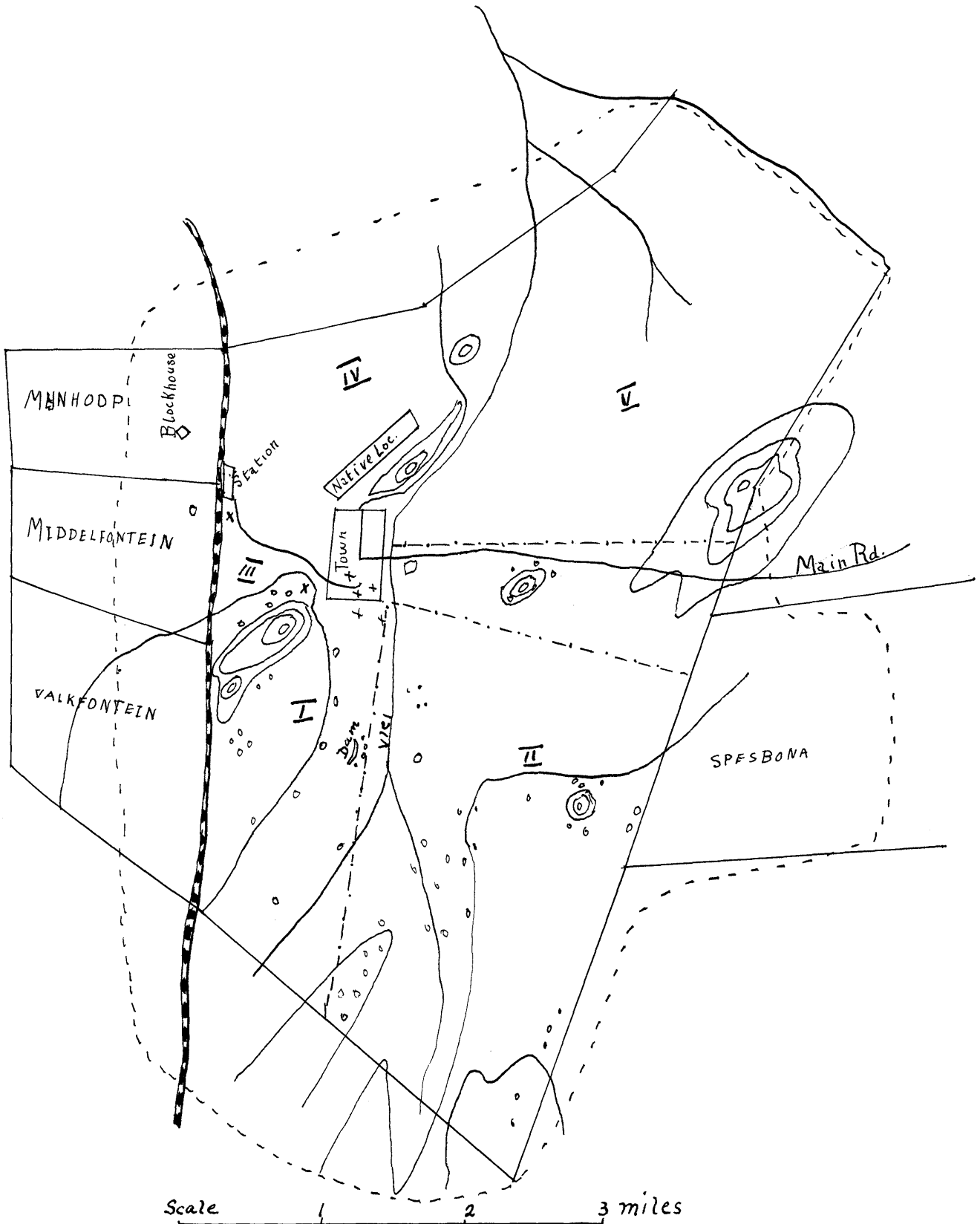
Meer-cats were exterminated over the whole area.

Map No.5

Trompsburg Commonage.

Reference:

- x Denotes points at which infected Cynictis were found at different times.
- oo Approximate position of colonies. A detailed survey was made of areas I, II and III in 1937.
- - - - - Boundary of area in which meercats were exterminated.



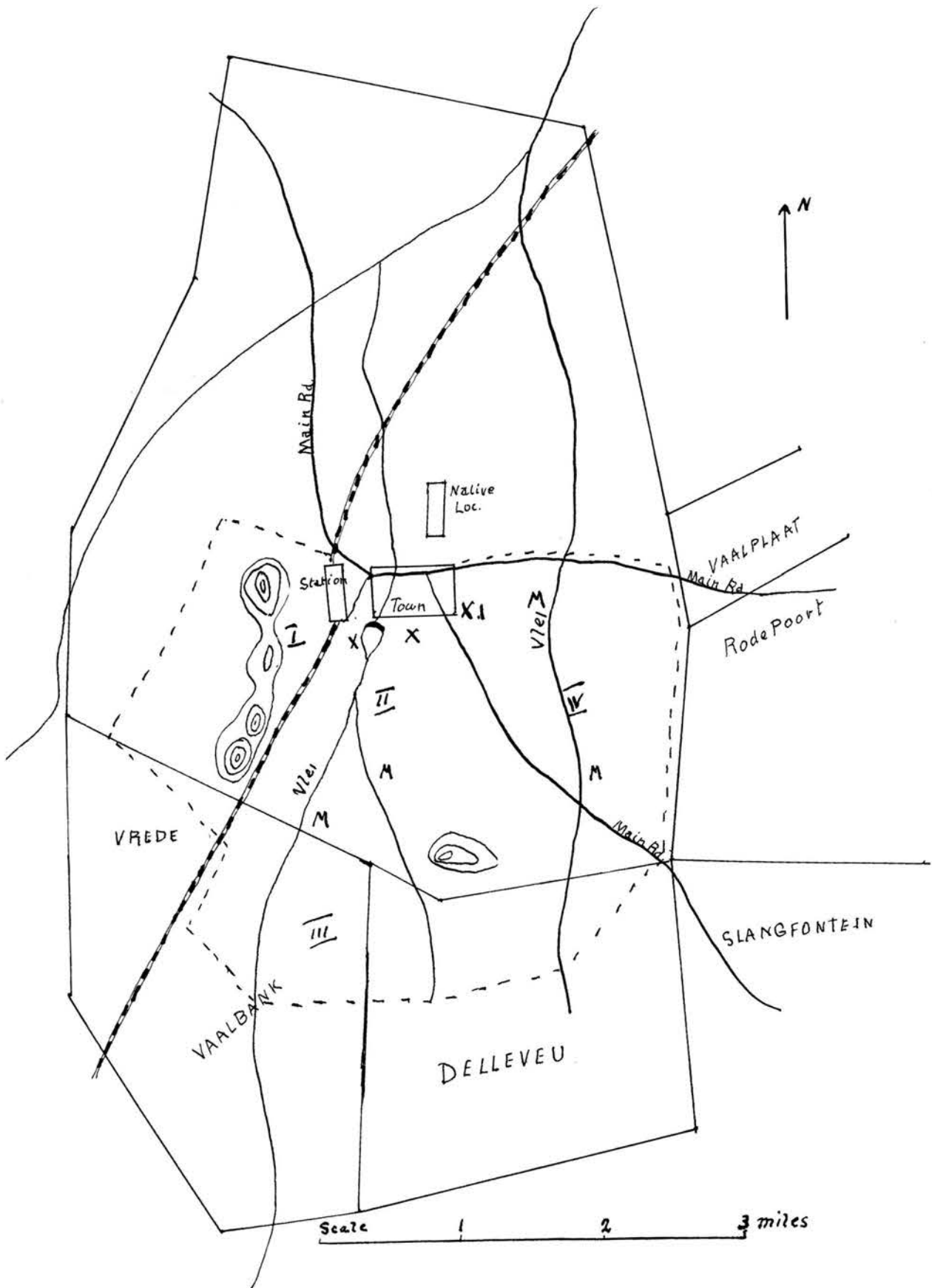


Map No.6

Edenburg Commonage.

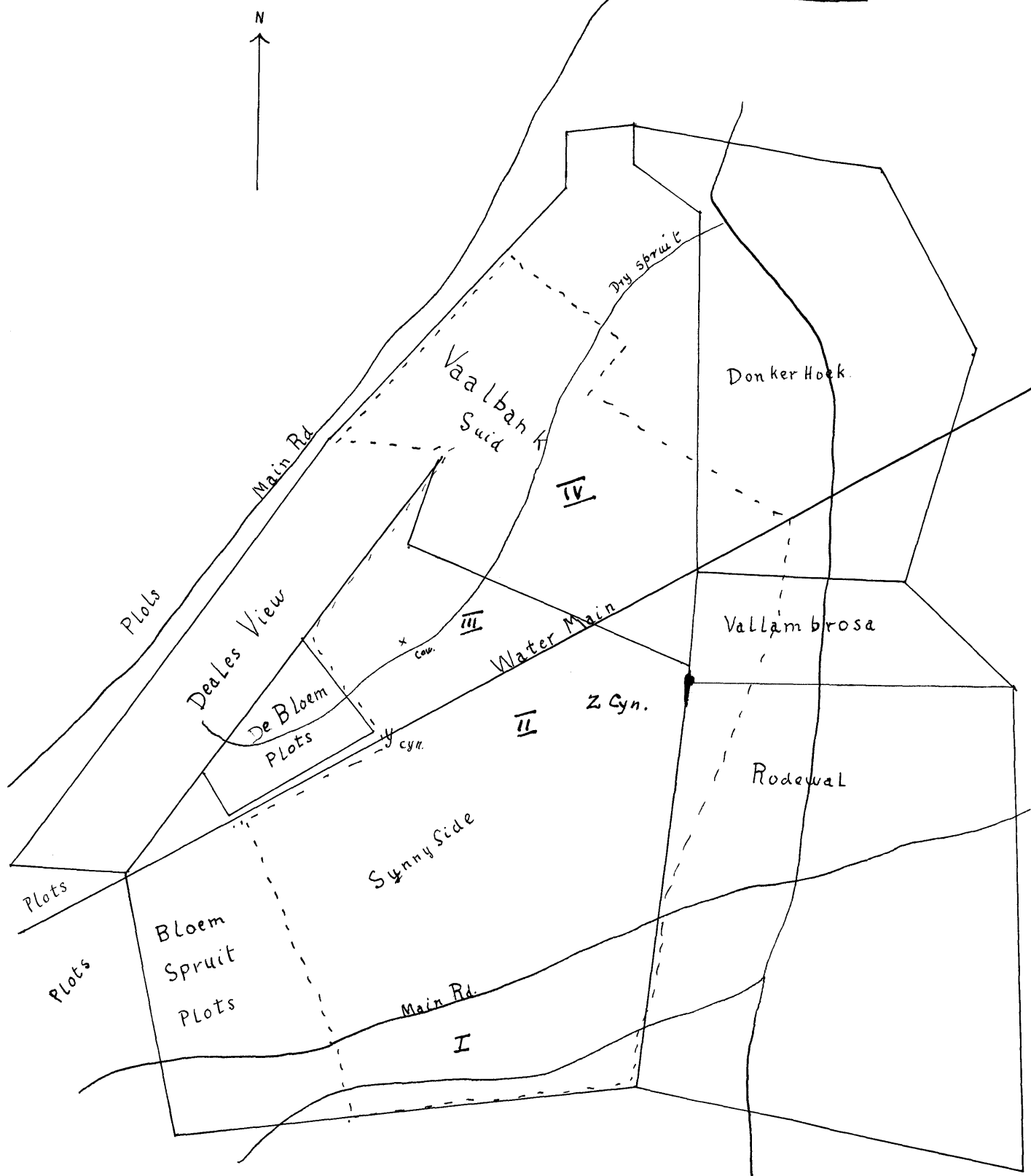
Reference:

- x x Points where infected Cynictis were located in 1933.
- x.1 Point where infected Cynictis was located in 1939.
- M. Approximate position of meercat carcasses.



Map No.7

Sunnyside : Bloemfontein District.



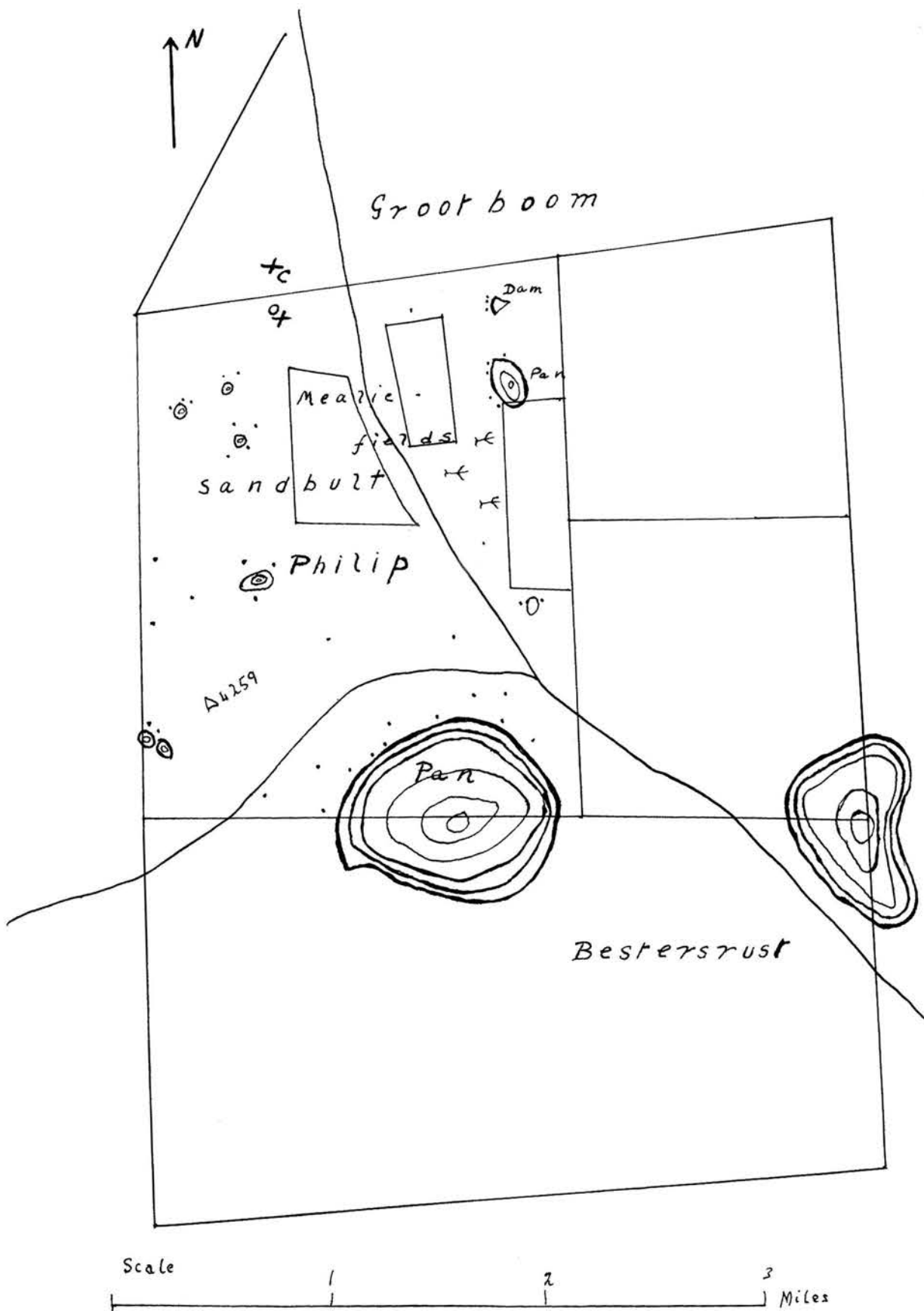
Scale 1 2 3 Miles

Area approx. 4,400 morgen

Reference:

- - - - Shows area in which meercats were eradicated.
- x cow Position where infected cow was found.
- y & z. Position where infected yellow mongooses were found.
- I, II. Indicate sections into which the area was divided for purposes of gassing.

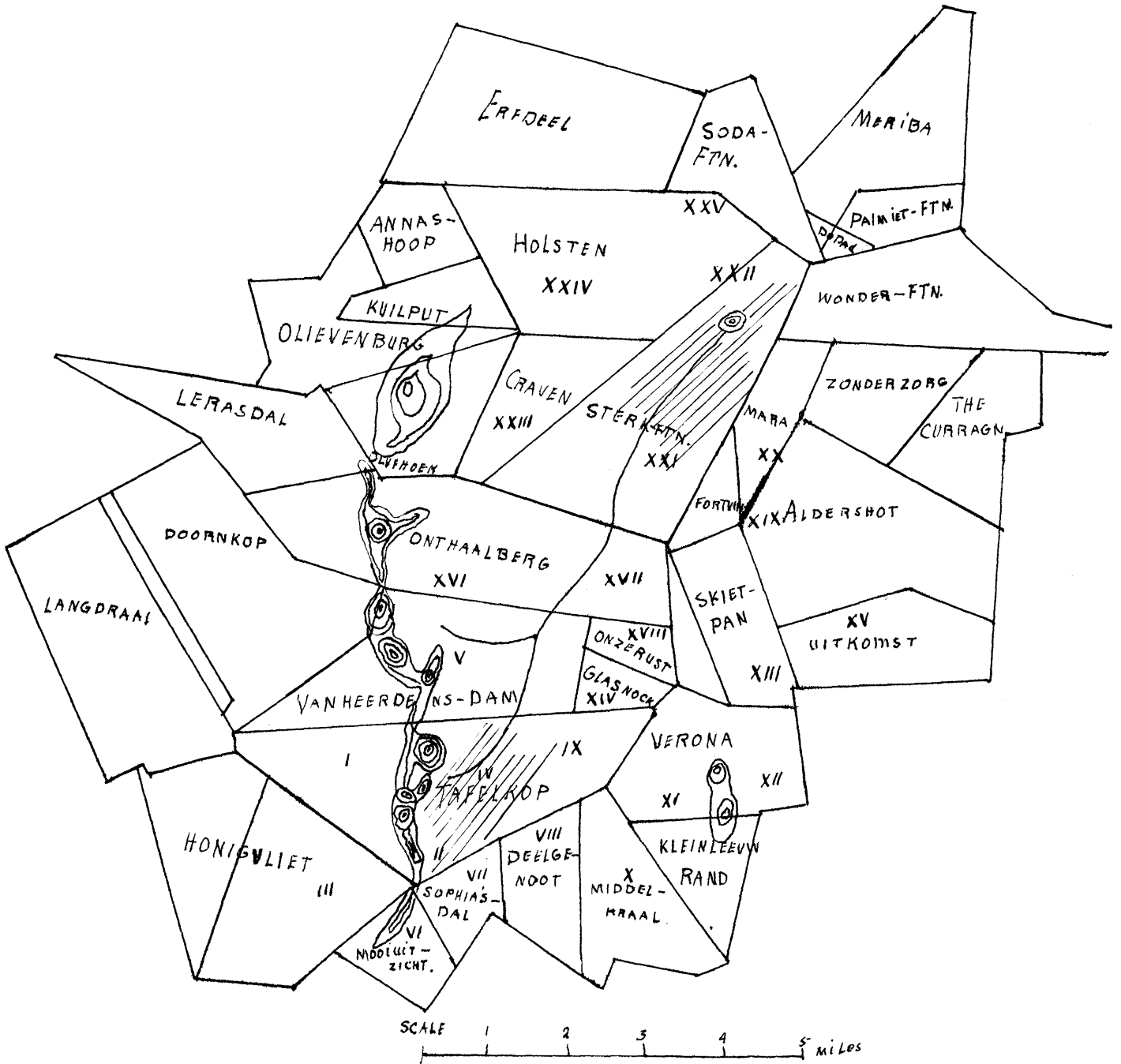
Sketch-map of Philip, Hoopstad District.



Reference:

- ox Indicates the position where the ox took sick.
- oc Where the rabid Cynictis was found.
- ψ Acasia karroo.
- ⊙ Panlike depression with meercat colonies.

Map No. 9



Tafelkop-Sterkfontein : Bloemfontein District.

Reference:

1, 11, 111 etc. indicate subsections to which reference is made in the text.

Indicates area where carcasses of meercats were found.

