



1. View from the driveway looking north-west



2. View of the porte-cochere looking east



3. View from the garden looking east



4. View from the garden looking south-east



5. View from the kitchen



6. View from the bedroom looking west



7. View from the dining room



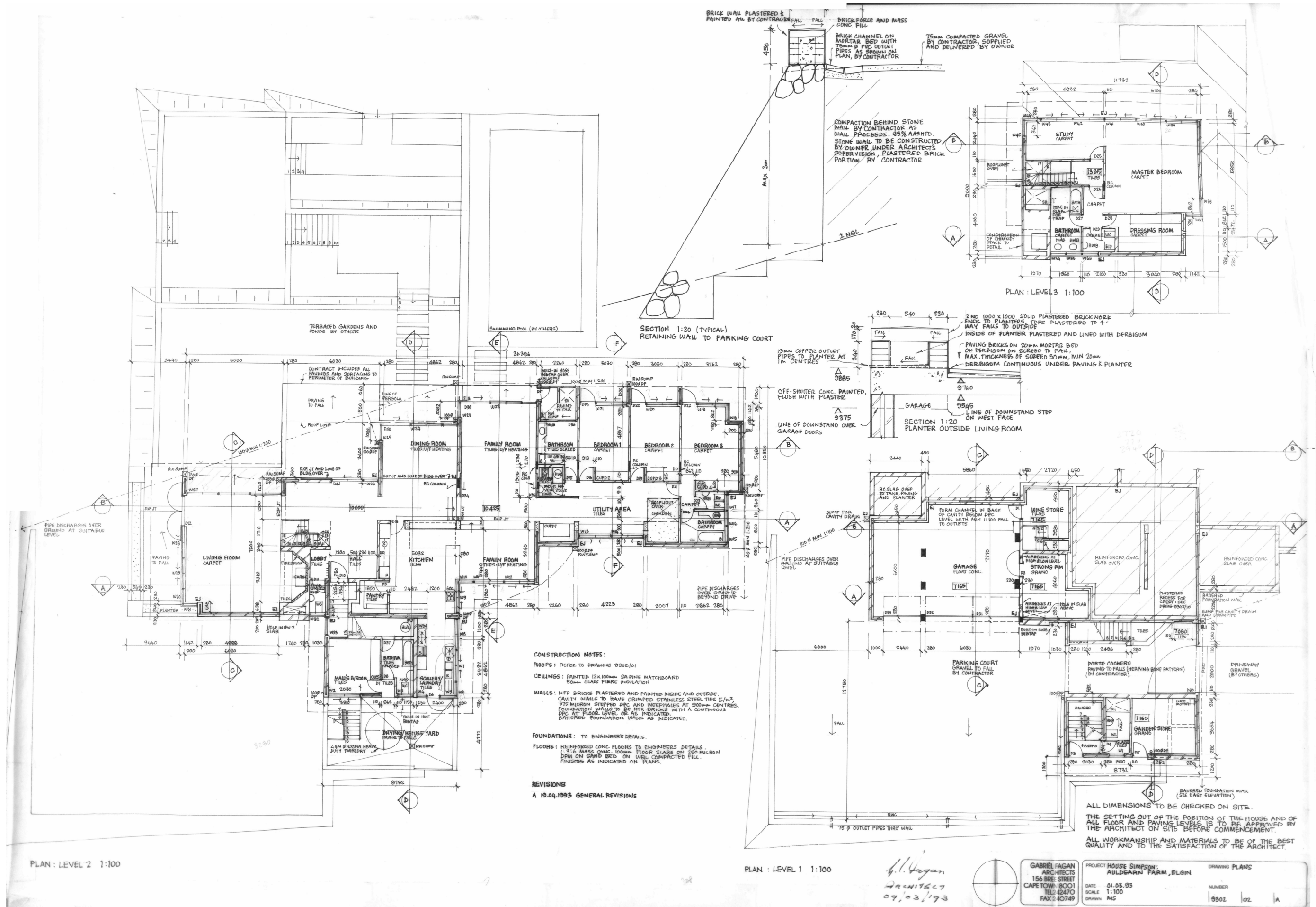
8. View of the south-west corner

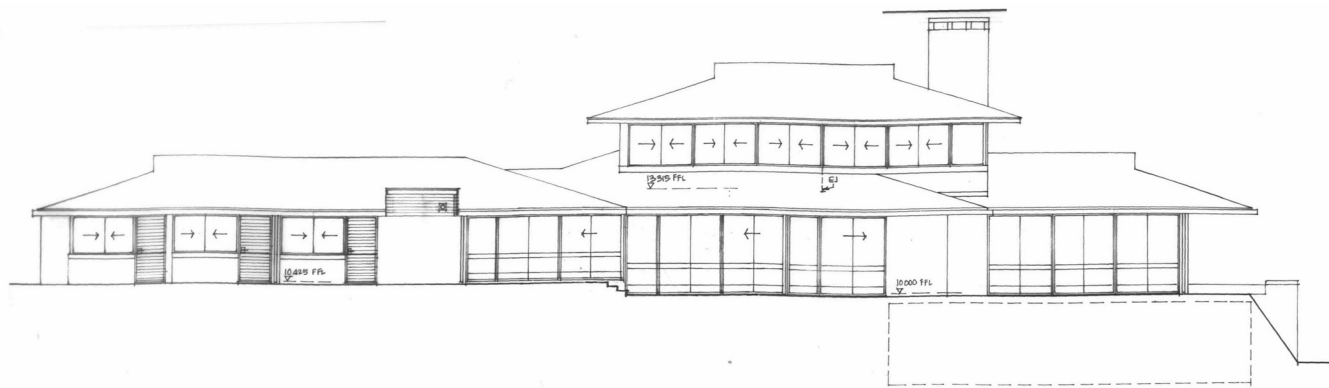


9. View from the hall

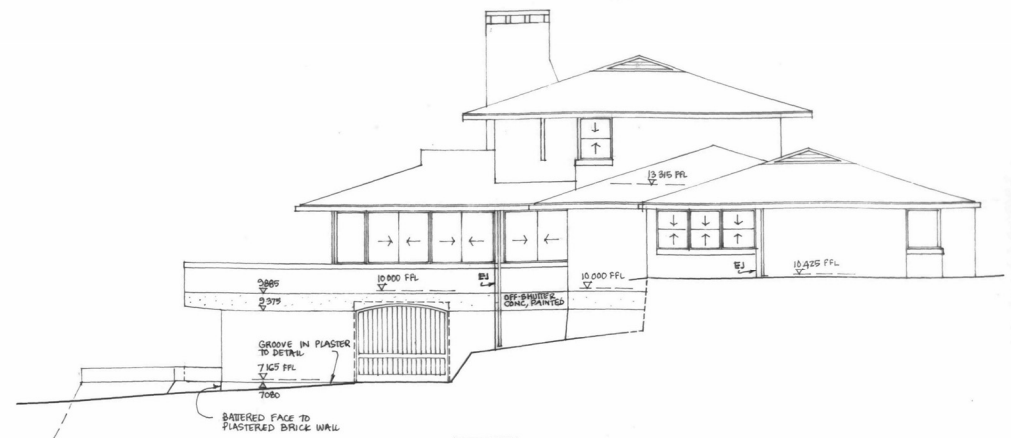


10. View of the living room and stairs





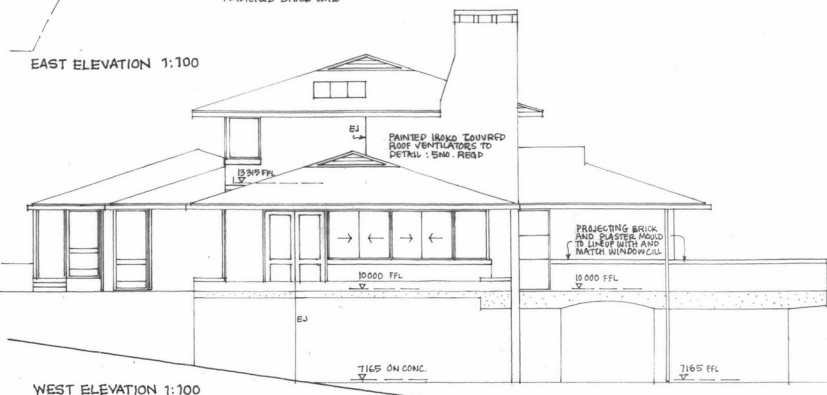
NORTH ELEVATION 1:100



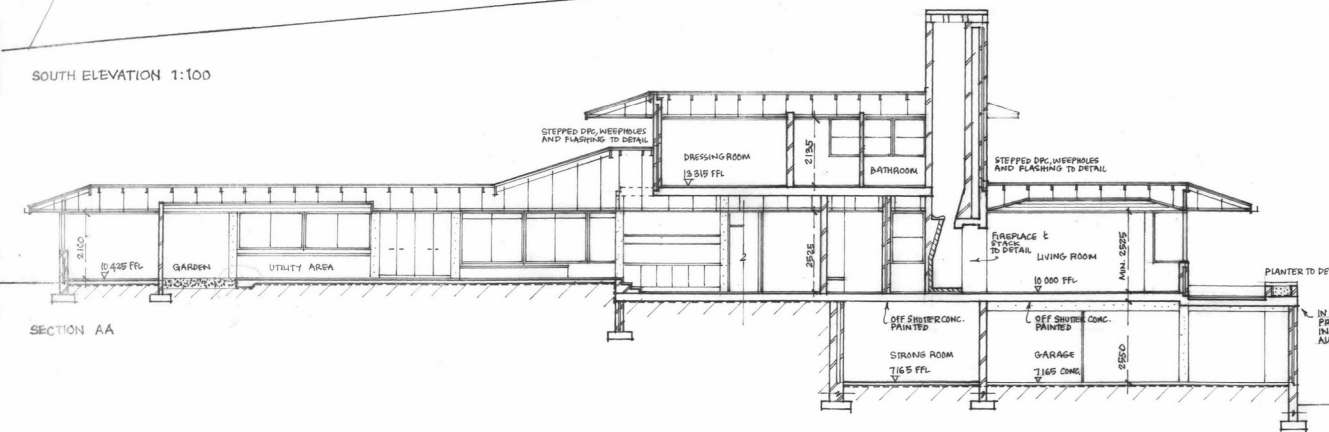
EAST ELEVATION 1:100



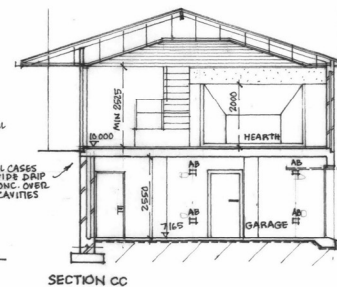
SOUTH ELEVATION 1:100



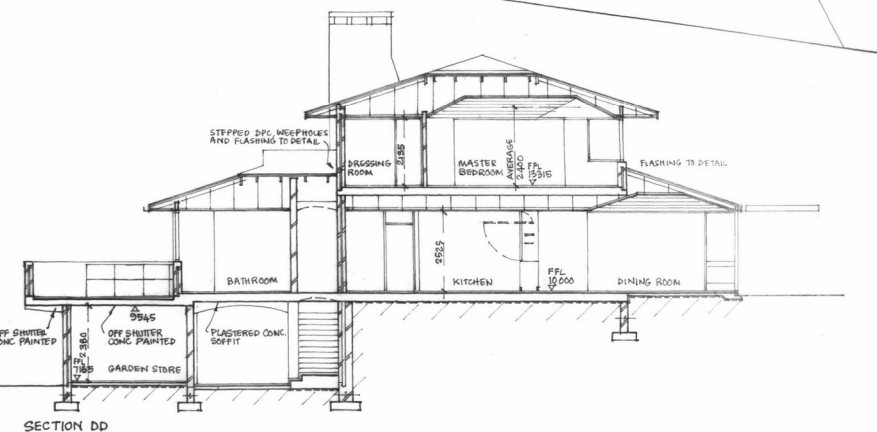
WEST ELEVATION 1:100



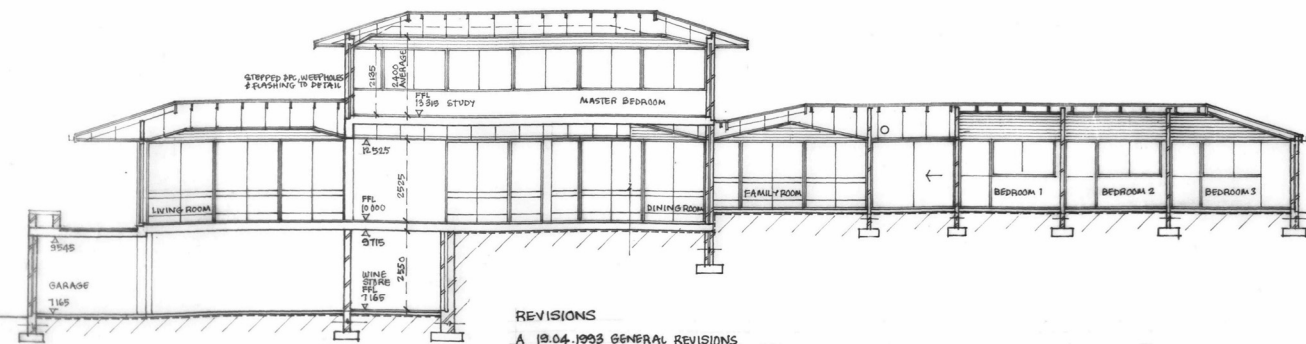
SECTION AA



SECTION CC

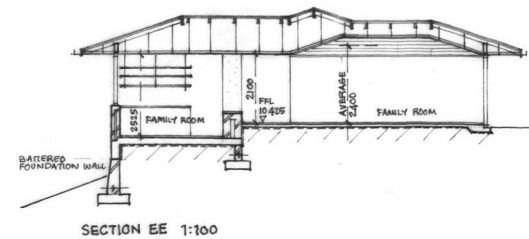


SECTION DD

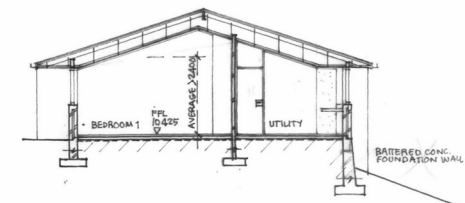


SECTION BB 1:100

REVISIONS
A 19.04.1993 GENERAL REVISIONS



SECTION EE 1:100



SECTION FF 1:100

ALL MEASUREMENTS TO BE CHECKED ON SITE

G. Fagan
ARCHITECT
07/03/93

GABRIEL FAGAN ARCHITECTS 156 BREE STREET CARL TOWN BOO1 TEL 242470 FAX 240749	PROJECT HOUSE SIMPSON : AULDEARN FARM, ELGIN	DRAWING ELEVATIONS AND SECTIONS
DATE 02.03.1993 SCALE 1:100 DRAWN MS	NUMBER 9902 03	A