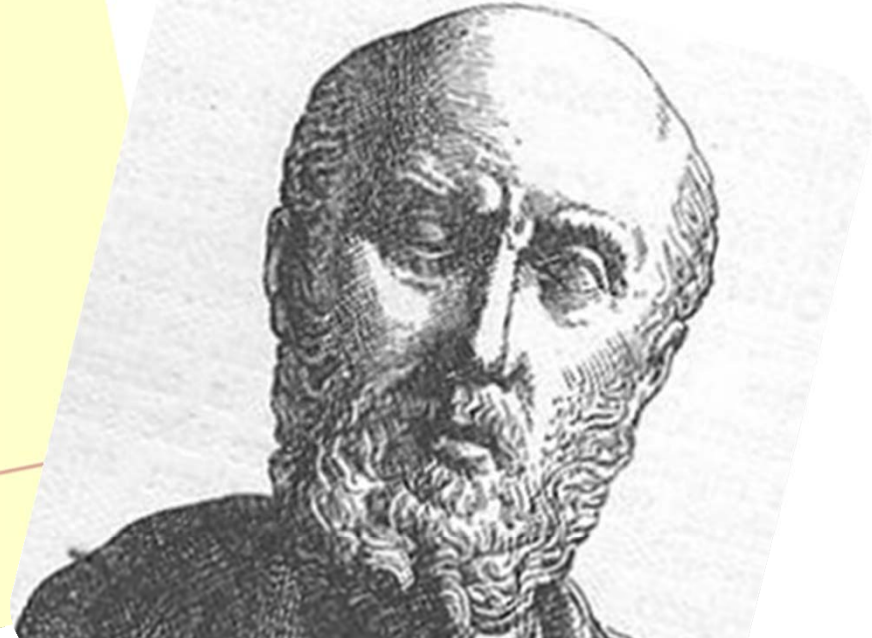


TOWARDS THE “ONE HEALTH” PHILOSOPHY

The HANS HOHEISEN
WILDNAVORSINGSTASIE
WILDLIFE RESEARCH STATION
story



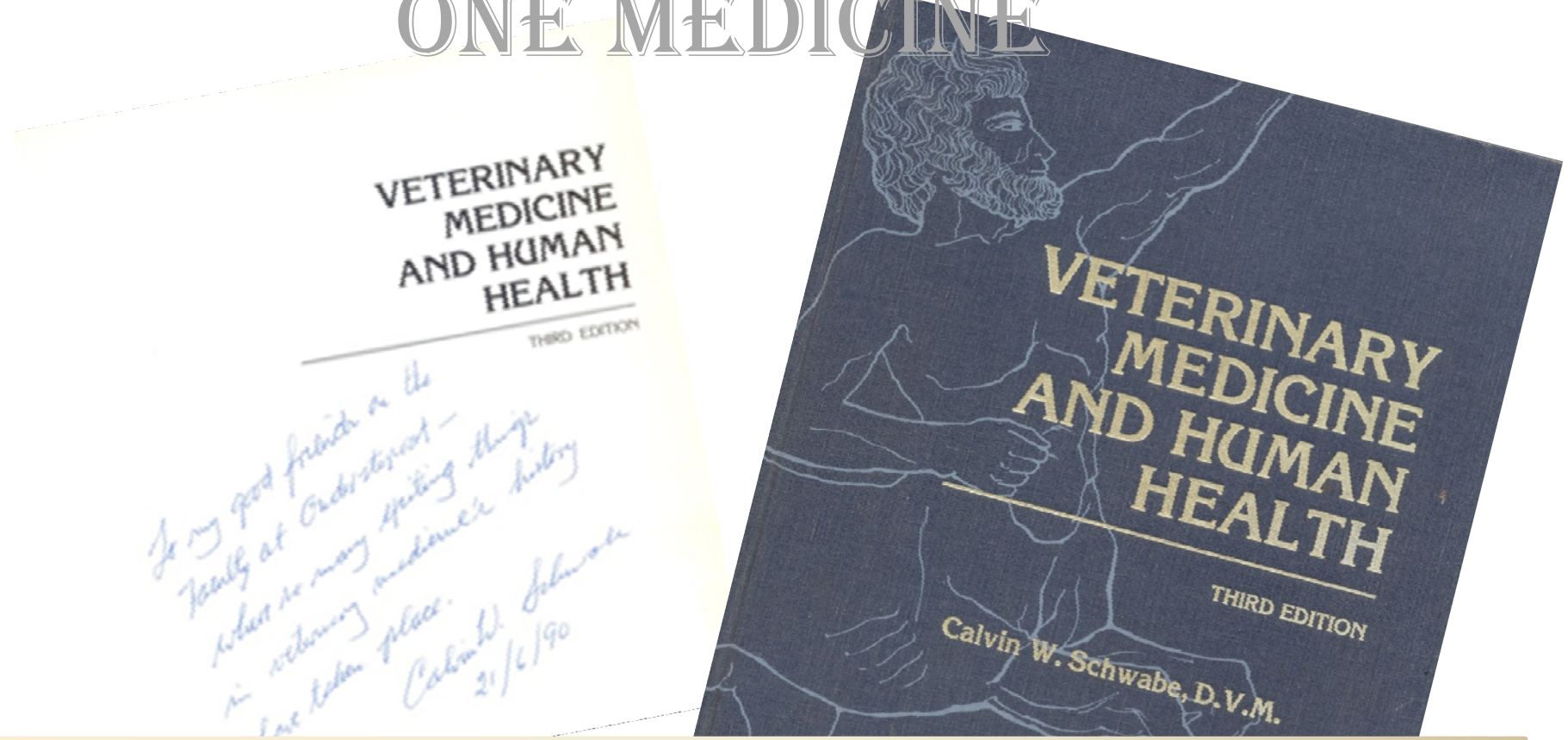
ONE HEALTH NOT AS NEW AS WE MIGHT THINK



Hippocrates : -

- Born c. 460b.C. on island of Cos, Greece
- Died c. 375b.C.
- A Greek Physician who is also reckoned as the father of medicine,
- Freed medicine from superstition.

ONE MEDICINE



Dr. Schwabe captured the term "One Medicine" in his book, 'Veterinary Medicine and Human Health'.

WHAT IS 'ONE HEALTH'?

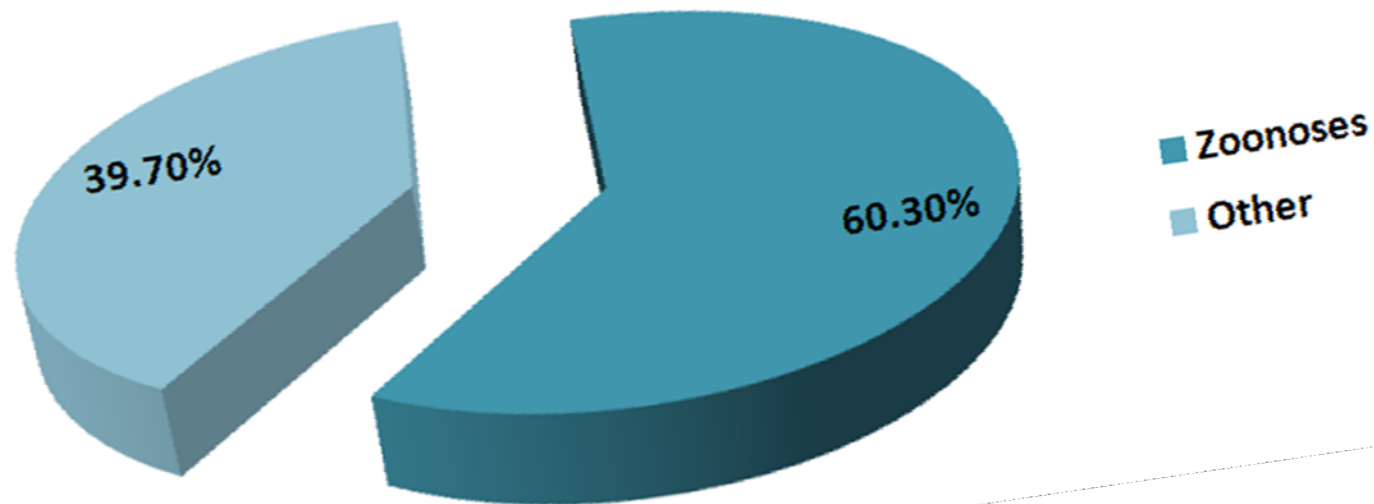
"A collaborative effort of multiple disciplines to obtain optimal health for people, animals and the environment".

"It is about managing problems at the interface between eco-system health, animal health and human health"

"..recognizes the essential link between human, domestic animal and wildlife health and the threat disease poses to people, their food supplies and economies"

ANIMALS, HUMANS, ENVIRONMENT

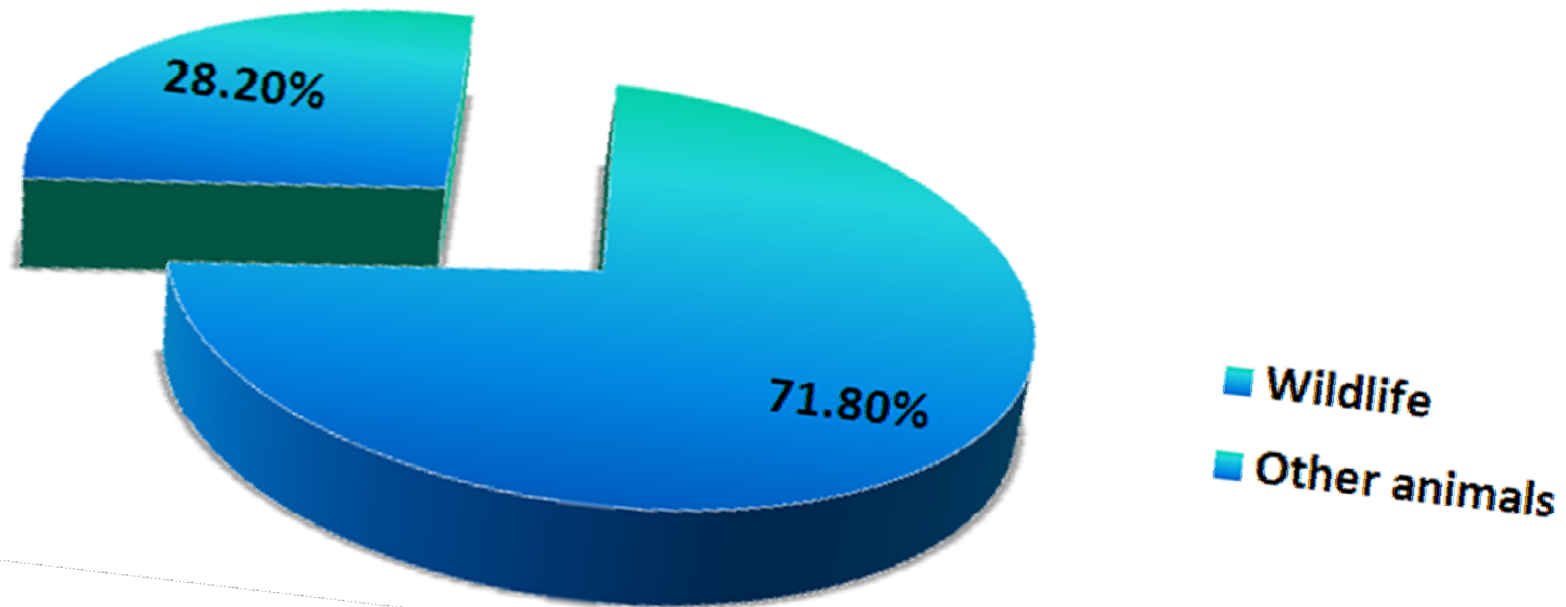
Emerging Infectious Diseases



60.3% of Emerging Infectious Diseases result from Zoonoses

ANIMALS, HUMANS, ENVIRONMENT

Origin of Emerging Infectious Diseases



71.8% of Emergency Infectious Diseases have origin in Wildlife

ANIMALS, HUMANS, ENVIRONMENT

Socio-economic factors



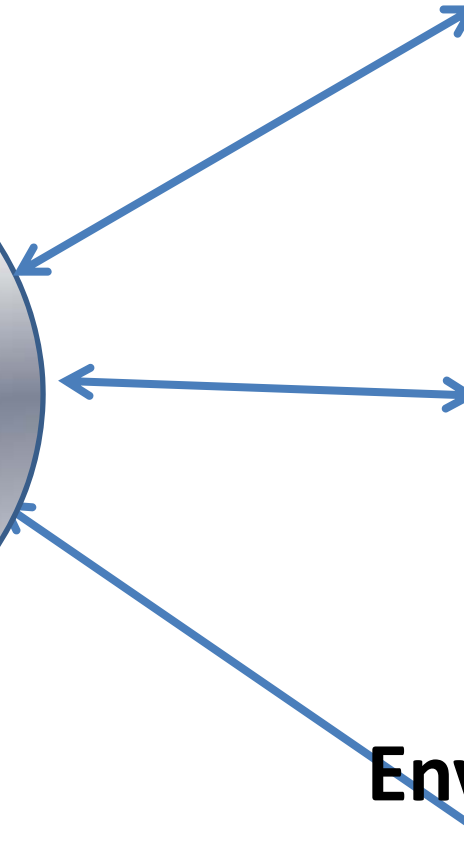
Ecological factors



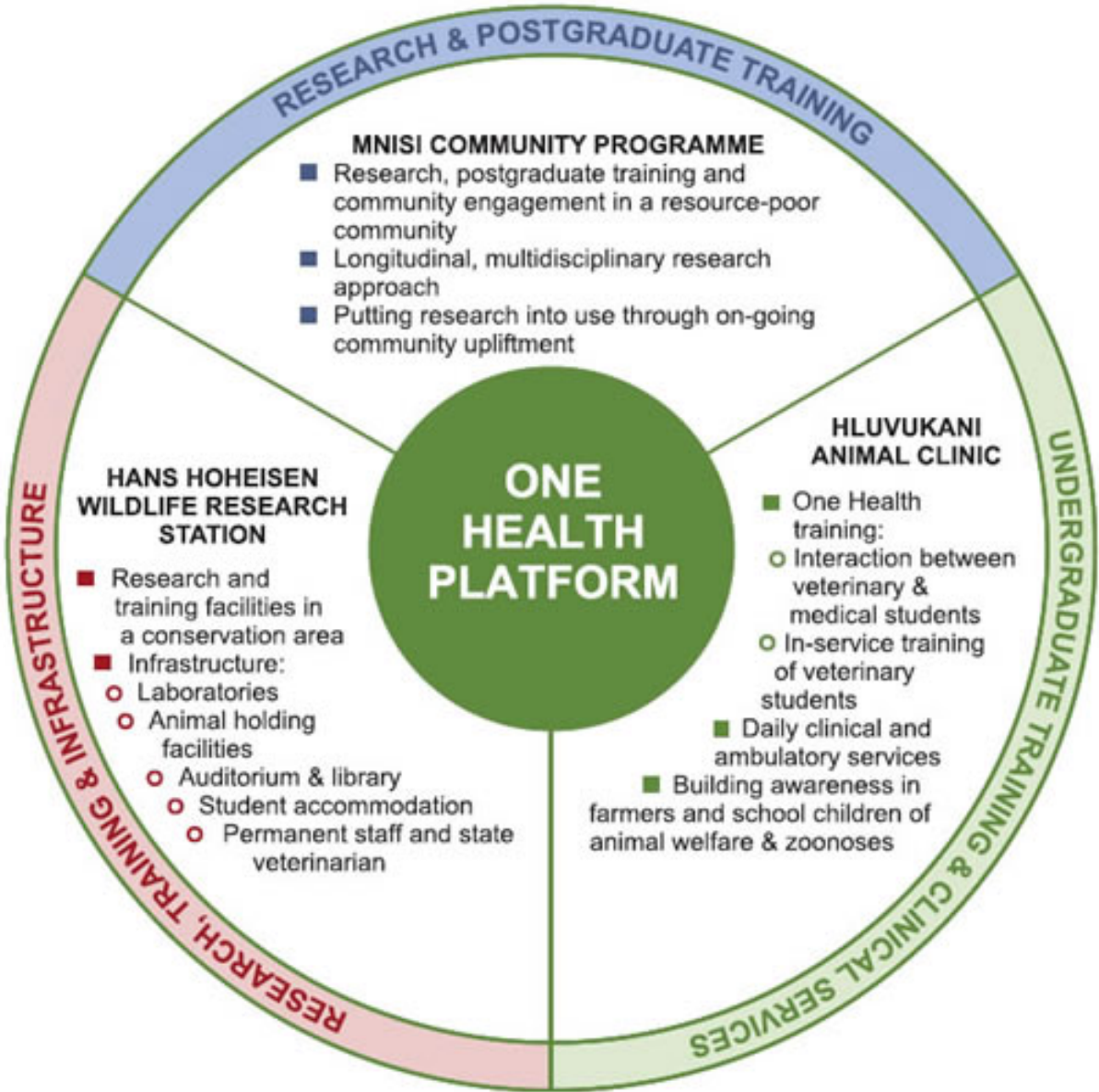
Environmental factors



Origins of
Emerging
Infectious
Diseases



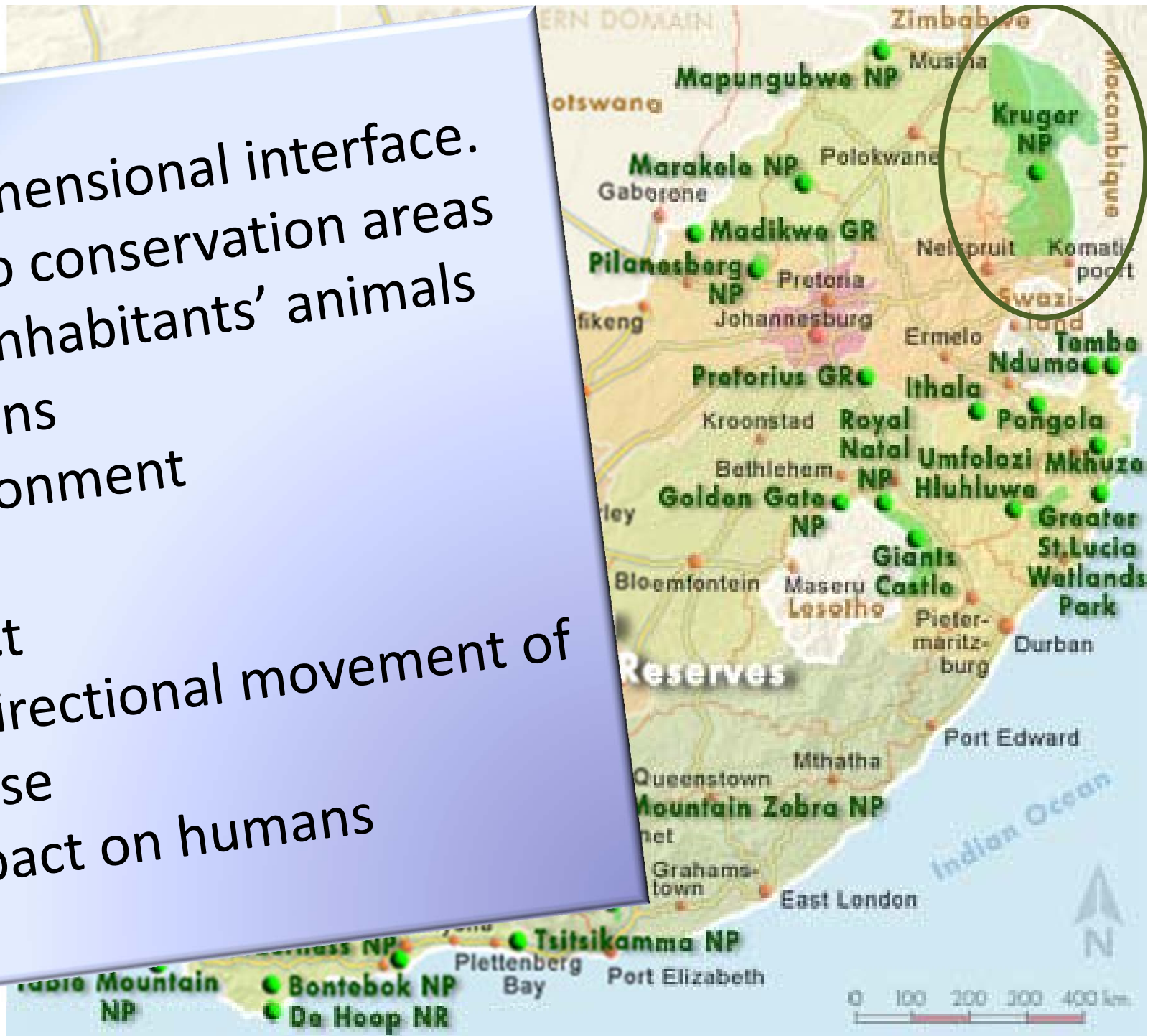
FACULTY 'S CONTRIBUTION TOWARDS "ONE HEALTH"



- Multidimensional interface.
- next to conservation areas
 - local inhabitants' animals
 - humans
 - environment

Impact

- bi-directional movement of disease
- impact on humans



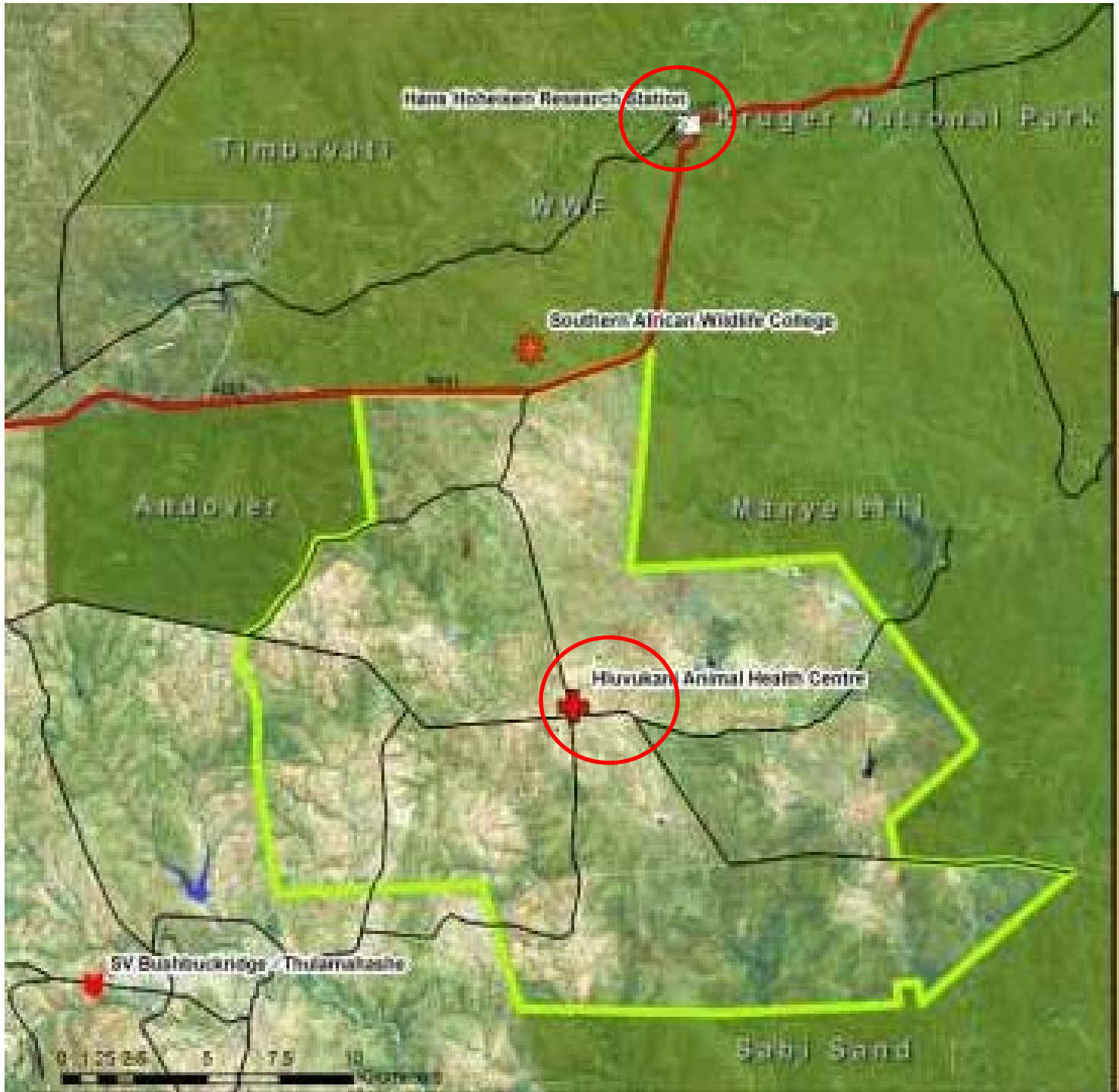
- 40 000+ Shangaan-speaking inhabitants
- Various levels of poverty
- 2 villages
- 850 households
- 1 Animal Clinic
- 5 Human Clinics
- Subsistence agriculture
- Well-structured Traditional Authority
- 1050 cattle owners
- 630 goat owners



MNISI COMMUNITY PROJECT

- Main aim is to improve the health and welfare of the people in this community
- Focused on various aspects of the human/animal(livestock/wildlife)/ecosystem interface
- Putting research into use through on-going community upliftment
- Community is informed and involved at all times
- Various stakeholders involved





Hans Hoheisen
Wildlife Research
Station

Mnisi Community
Borders

Hluvukani
Animal Health
Clinic

HLUVUKANI ANIMAL CLINIC

- Opened in 2009
- Primary animal health care to community
- In-service training of final year veterinary students



HLUVUKANI ANIMAL CLINIC

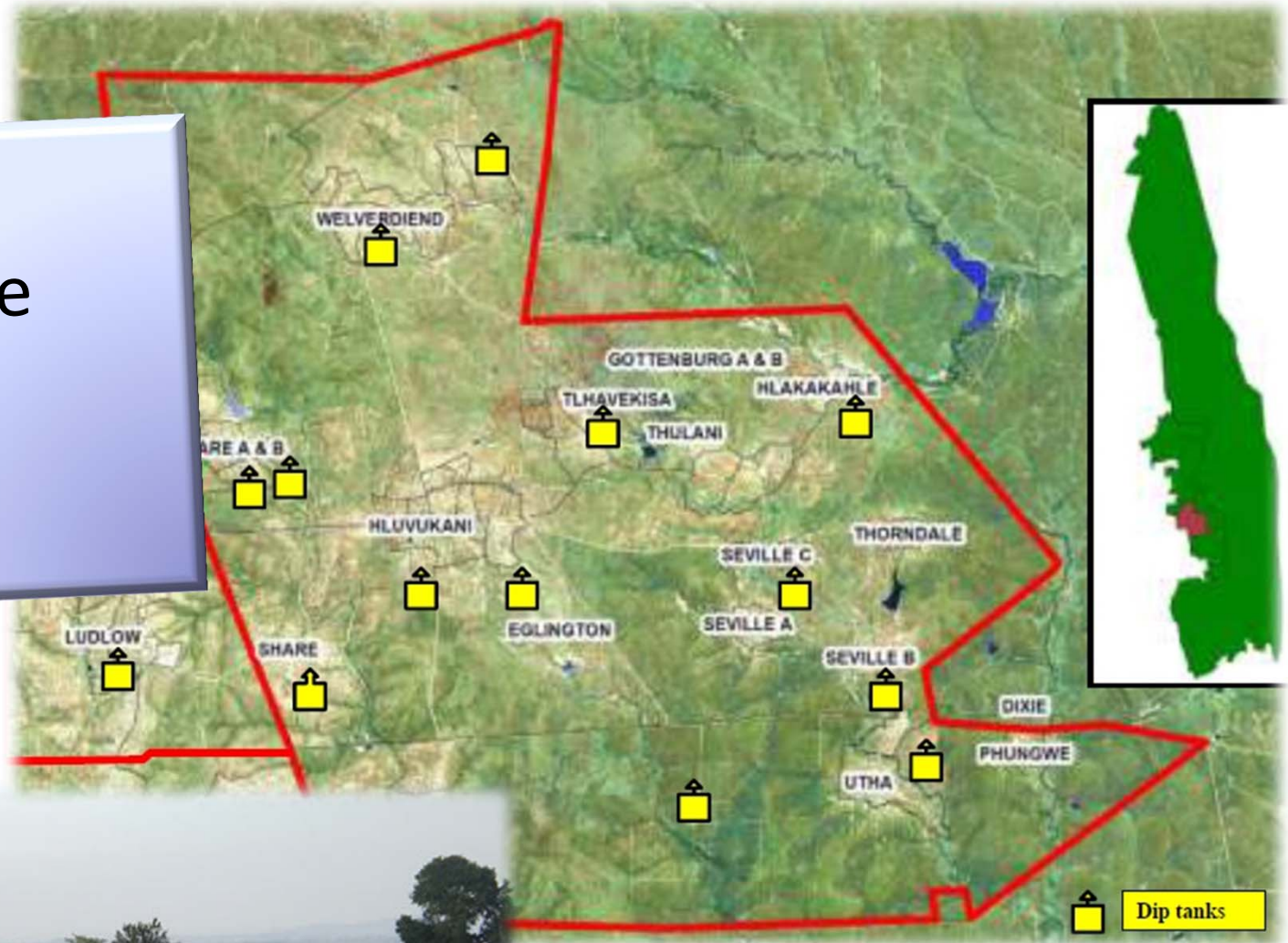
Services to the community

- Clinical work
- Ambulatory and clinic –based



Services to the community

- Dip tanks



HLUVUKANI ANIMAL CLINIC

- Learner education
- Farmer education



HLUVUKANI ANIMAL CLINIC

Services to the community

- Research assistance



HANS HOHEISEN

Wildlife Research Station



Vector
FENCING
STAFIX
082 808 6227



HANS HOHEISEN WILDLIFE RESEARCH STATION



- Official opening on 15th July 1983
- Opened by Hans Otto Hoheisen
- Built on land donated by him in 1980

HANS HOHEISEN WILDLIFE RESEARCH STATION



HANS HOHEISEN WILDNAVORSINGSTASIE WILDLIFE RESEARCH STATION

TRANSVAALSE
PROVINSIALE
ADMINISTRASIE

AFDELING
NATUURBEWARING

TRANSVAAL
PROVINCIAL
ADMINISTRATION

NATURE CONSERVATION
DIVISION

2005: A JOINT VENTURE BETWEEN
THE PEACE PARKS FOUNDATION
AND THE LIMPOPO DEPARTMENT
OF ECONOMIC DEVELOPMENT,
ENVIRONMENT AND TOURISM



PROVINCIAL BOUNDARIES
CHANGED , WHICH MOVED THE
FACILITY FROM THE LIMPOPO
PROVINCE TO MPUMALANGA



22ND JUNE 2009: MOU SIGNED BY UP, PEACE PARKS FOUNDATION, AND MTPA



Mr. Charles Ndabeni Prof Gerry Swan Mr Werner Myburgh



WITS RURAL FACILITY



CONTENTS OF HANS HOHEISEN LIBRARY

- Rather old books
- Journals – mostly unbound
- Boxes containing research reports
- Maps



CONTENTS OF HANS HOHEISEN LIBRARY

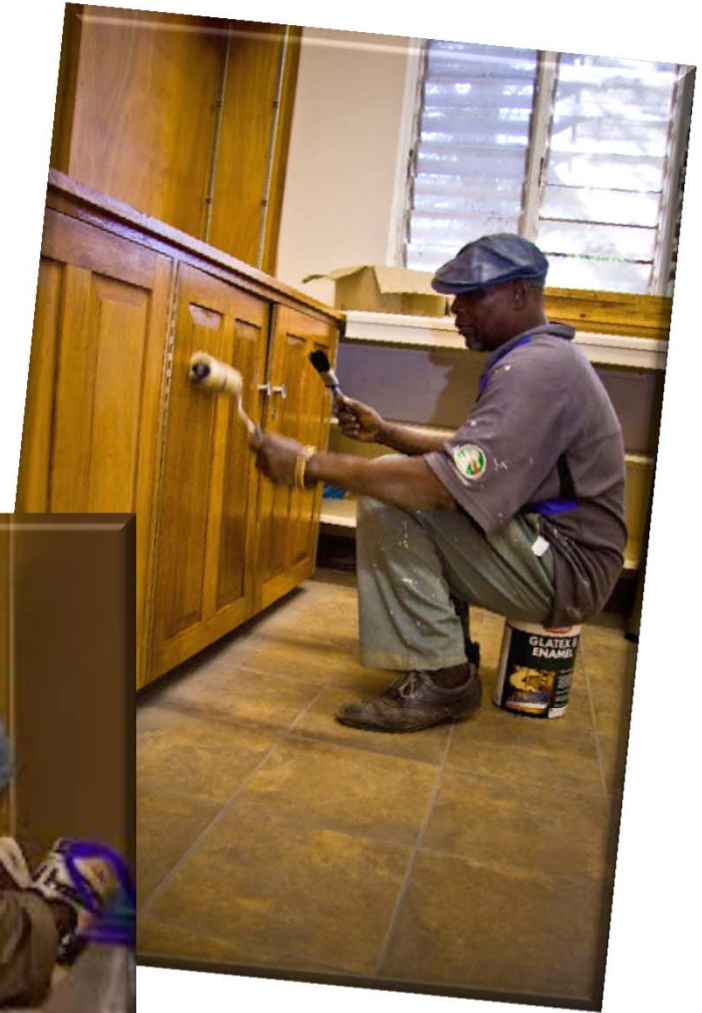
- Many files containing raw research data
- Aerial photographs
- A huge number of files with journal articles
- Various other paraphernalia



CLEARING AWAY THE LIBRARY MATERIAL FOR THE RENOVATIONS



RENOVATING THE HHWRC



EXCEL SPREADSHEET

The image shows a screenshot of an Excel spreadsheet. The title bar at the top indicates the file name is 'I3' and the active window is 'Notes'. The spreadsheet has a grid with columns labeled A through K and rows numbered 1 through 44. Row 1 contains the text 'Voorraad Hans Hoheisen Instituut bibliotheek' spanning from column A to column I. Row 3 is the header row for a table, with columns labeled: 'Titel' (A), 'Outeur' (B), 'Ed.' (C), 'ISBN' (D), 'Barcode' (E), 'Publ Year' (F), 'Publisher' (G), 'City' (H), and 'Notes' (I). The rest of the spreadsheet is empty.

	A	B	C	D	E	F	G	H	I	J	K
1	Voorraad Hans Hoheisen Instituut bibliotheek										
2											
3	Titel	Outeur	Ed.	ISBN	Barcode	Publ Year	Publisher	City	Notes		
4											
5											
6											
7											
8											
9											
10											
11											
12											
13											
14											
15											
16											
17											
18											
19											
20											
21											
22											
23											
24											
25											
26											
27											
28											
29											
30											
31											
32											
33											
34											
35											
36											
37											
38											
39											
40											
41											
42											
43											
44											

The status bar at the bottom shows the current date and time as '23 October 2012 Tuesday' and the zoom level as '100%'. The active cell is 'Enter'.

LOCATION, SHELF NUMBER AND STATUS OF EVERY ITEM

Start Over Place a hold Save Records MARC Display Return to List Modify Search Another Search

KEYWORD UP Libraries (Except Mamelodi)

Limit search to available items

Did you mean [hans chophouse?](#) [more »](#)

2 results found. Sorted by [relevance](#) | [date](#) | [title](#).

Search Options

- Advanced Search
- Author & Title
- Government Document Number
- UP Shelf Number
- CSIR Shelf Number
- Dewey Number

My Library

- My Account Login

(Search History)

Result page:

Title South African animal life : results of the Lund University Expedition in 1950-1951 / edited by Bertil Hanstrom, Per Brinck, Gustaf Rudebeck.

[Persistent link to this title](#)

Publisher Stockholm : Almqvist and Wiksell, c1955-c1973.

Rating ★★★★★

LOCATION	CALL NO	STATUS	NOTE
Hoheisen Collection Orpen Gate	VHHO 591.968 SOUTH AFRICAN V. 6	LIB USE ONLY	---
Hoheisen Collection Orpen Gate	VHHO 591.968 SOUTH AFRICAN V. 8	LIB USE ONLY	---
Hoheisen Collection Orpen Gate	VHHO 591.968 SOUTH AFRICAN v. 1	LIB USE ONLY	---
Hoheisen Collection Orpen Gate	VHHO 591.968 SOUTH AFRICAN v. 2	LIB USE ONLY	---
Hoheisen Collection Orpen Gate	VHHO 591.968 SOUTH AFRICAN v. 3	LIB USE ONLY	---
Hoheisen Collection Orpen Gate	VHHO 591.968 SOUTH AFRICAN v. 4	LIB USE ONLY	---
Hoheisen Collection Orpen Gate	VHHO 591.968 SOUTH AFRICAN v. 5	LIB USE ONLY	---
Open Coll Level 5	591.968 SOUTH AFRICAN V. 15	IN	---
Open Coll Level 5	591.968 SOUTH AFRICAN V. 14	IN	---
Open Coll Level 5	591.968 SOUTH AFRICAN V. 13	IN	---



Amelia Breytenbach

May 2010:
Unpacking
the stored
material



READY FOR THE OFFICIAL RE- OPENING

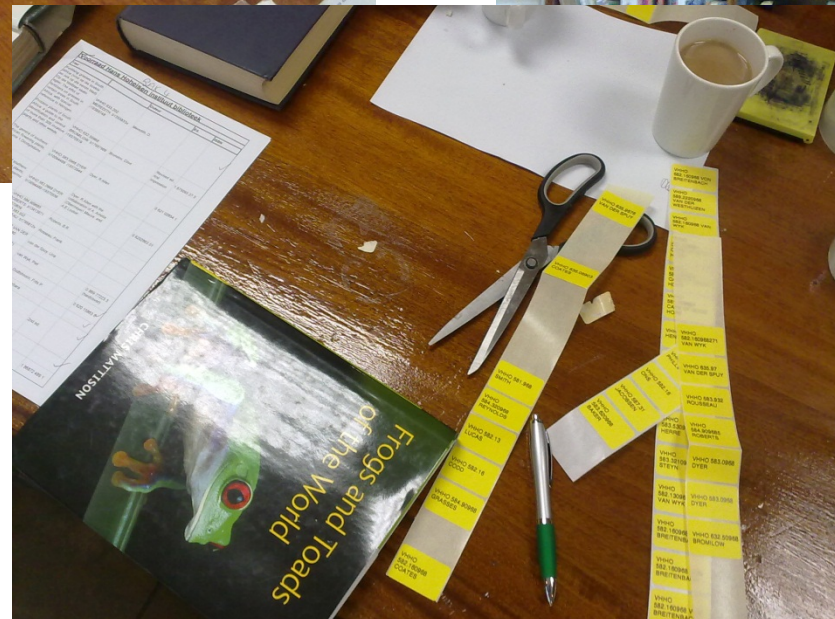


THE OFFICIAL RE-OPENING 25 AUGUST 2010

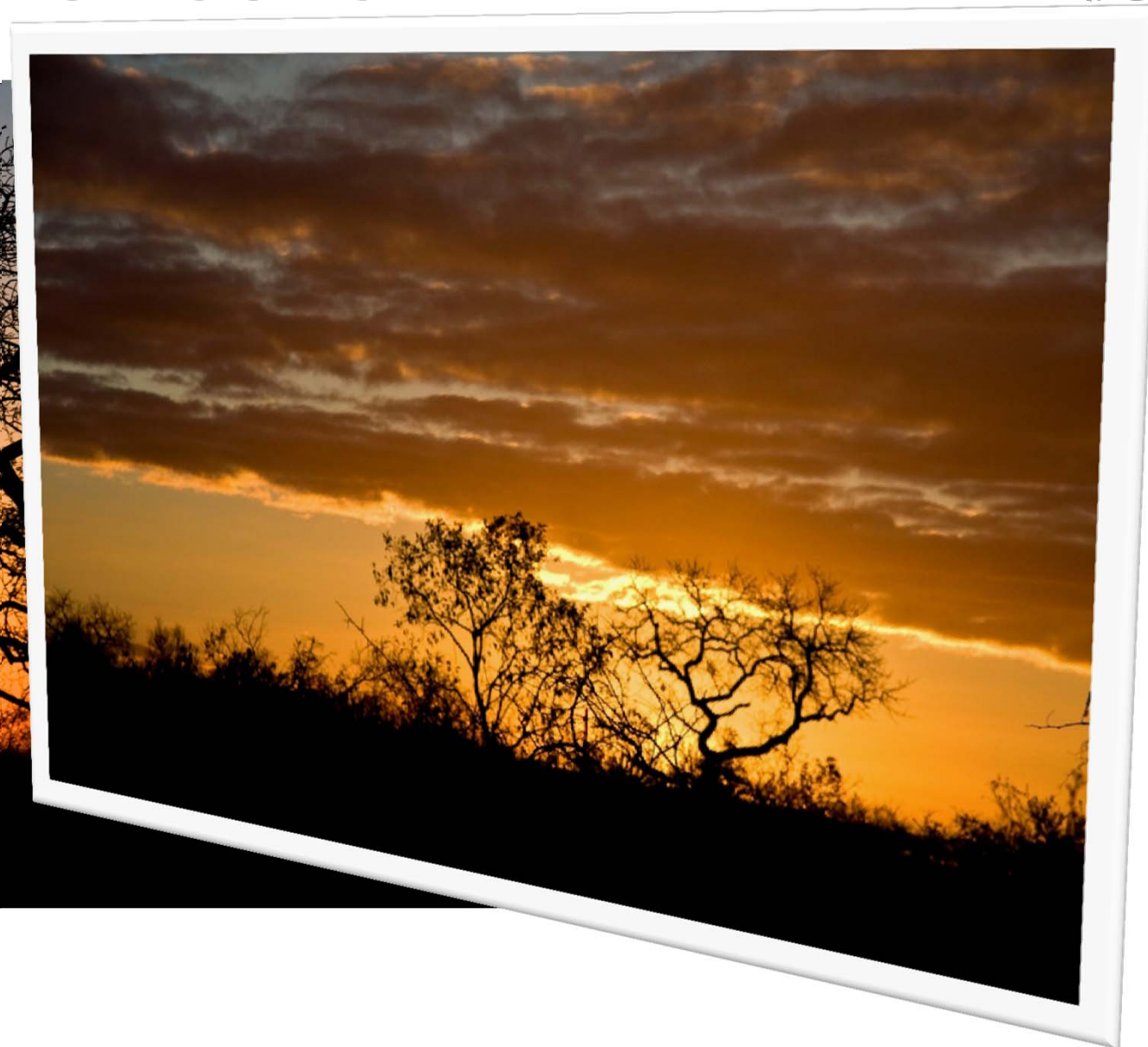
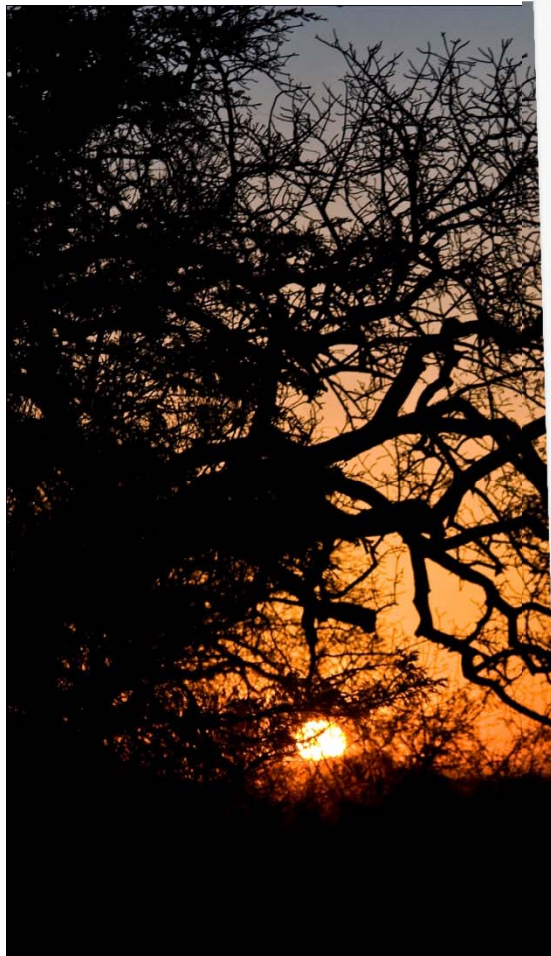




ADDING THE YELLOW STICKERS ON THE SPINE AND THE UP STAMP



A BEAUTIFUL SUNSET AT THE HHWRC



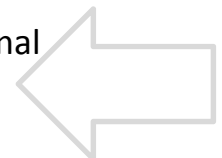
The image shows four flagpoles in a row against a clear blue sky. From left to right: the first pole has the South African flag; the second pole has a blue and red flag with a yellow and red emblem; the third pole has a white flag with a green logo and text; the fourth pole has a white flag with a red and green emblem. In the background, there are trees and a building. The text is overlaid on the right side of the image.

**Antoinette Lourens
Susan Marsh**

**7 ICAHIS
3-8 May 2013
Boston, MA**

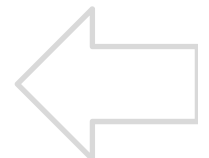
**antoinette.lourens@up.ac.za
susan.marsh@up.ac.za**

“A collaborative effort of multiple disciplines to obtain optimal health for people, animals and the environment”.



“It is about
managing problems
at the interface
between eco-system
health, animal
health and human
health”

[Evans, B. 2012. One Health: It's What We are Called to Do
http://www.inspection.gc.ca/animals/cvo-international-standards/cvo-statements/
one-health/eng/1328721867511/1336053202506](http://www.inspection.gc.ca/animals/cvo-international-standards/cvo-statements/one-health/eng/1328721867511/1336053202506)



..recognize the essential link between human, domestic animal and wildlife health and the threat disease poses to people, their food supplies and economies..”

[Centers for Disease Control and Prevention](http://www.cdc.gov/onehealth/pdf/manhattan/twelve_manhattan_principles.pdf), n.d.

http://www.cdc.gov/onehealth/pdf/manhattan/twelve_manhattan_principles.pdf

