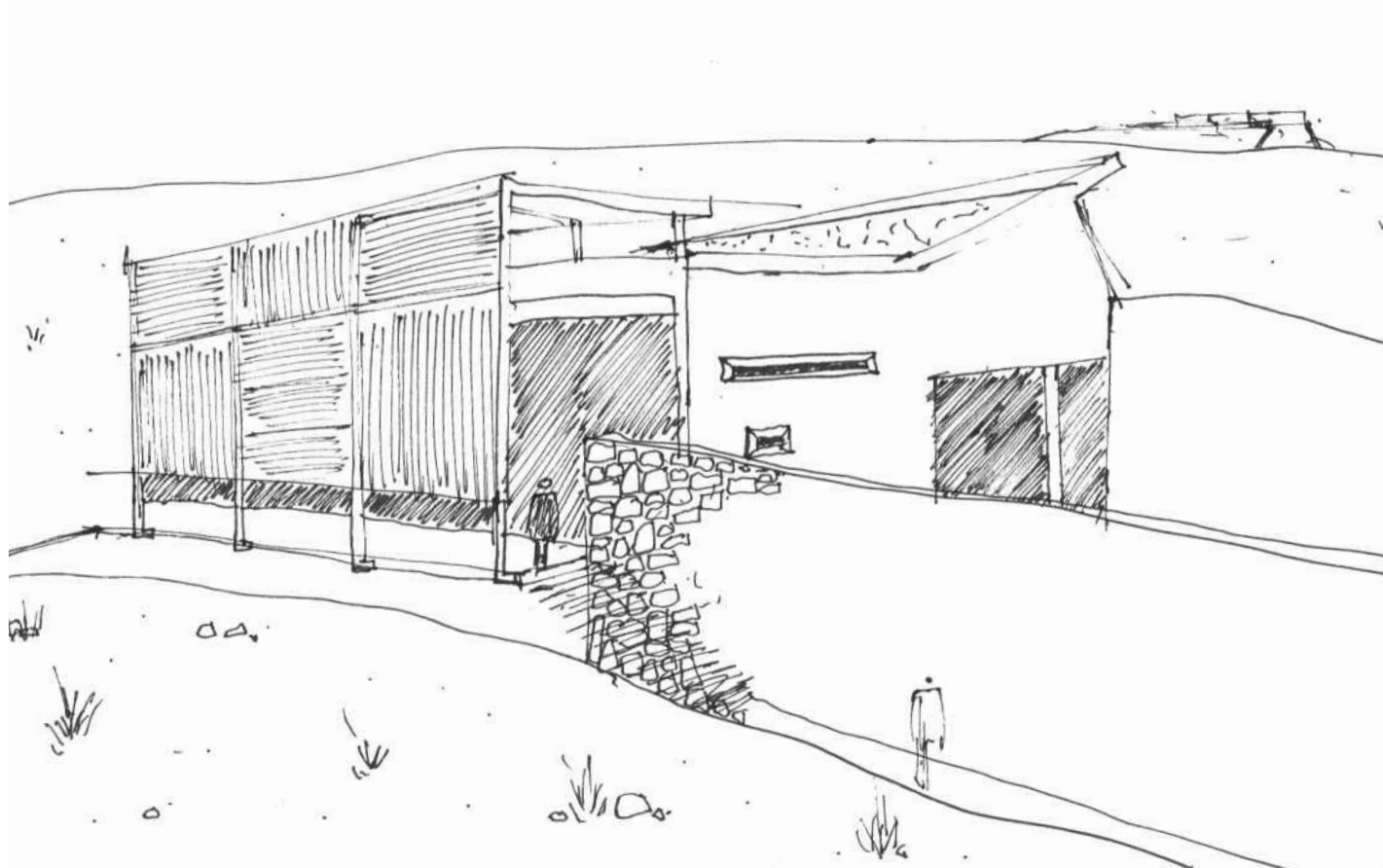


07

Conclusion



+ Conclusion

The design has attempted to create an awareness to the public in experiencing the West Fort and its relationship to the other Fortifications in Pretoria as an artefact and monument. The visitor's experience of moving through the landscape also functions as a didactic historical narrative.

The architectural problem is therefore resolved by the author by facilitating the interaction of the visitor and Fort. The visitor is constantly aware of the historical context and the various exhibition spaces in the landscape as didactic elements, creating thresholds and encouraging further exploration.

The design essentially is a response to the three-way relationship of the visitor, archaeological practice and most importantly the Fort itself in the landscape. The buildings allude to the Fort in a subtle, but symbolic manner, through exploration and integration of architectural typology and landscape.

To conclude, the new buildings respond to the architecture in ruins (the Fort) and also influence each visitor in a unique manner. They respond to the landscape and contribute to the contextual language. Eventually the new buildings will also become ruins - both structurally, architecturally and symbolically.



fig. 7.1. Entrance to West Fort. (2010)