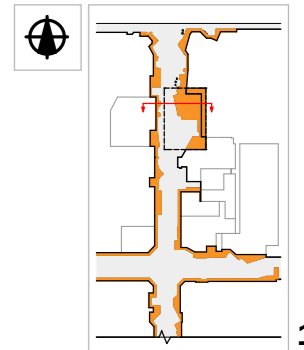
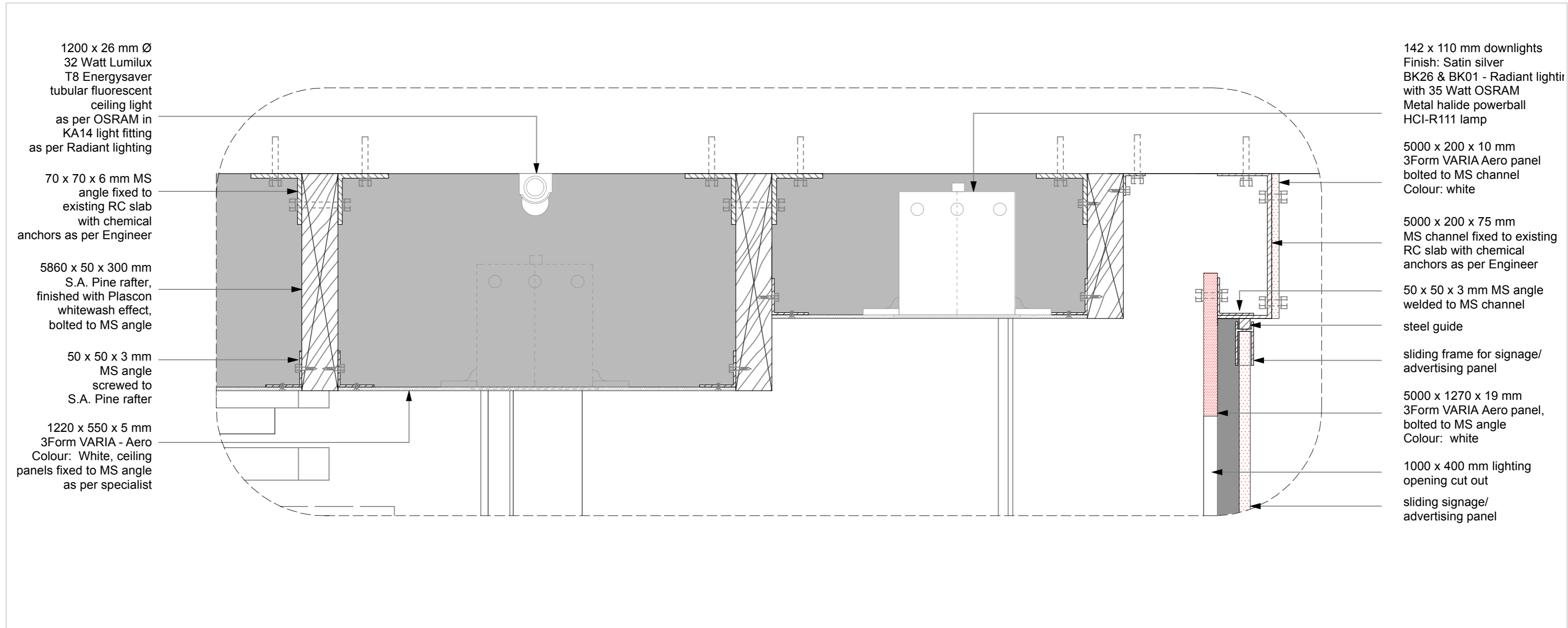


SECTION 4

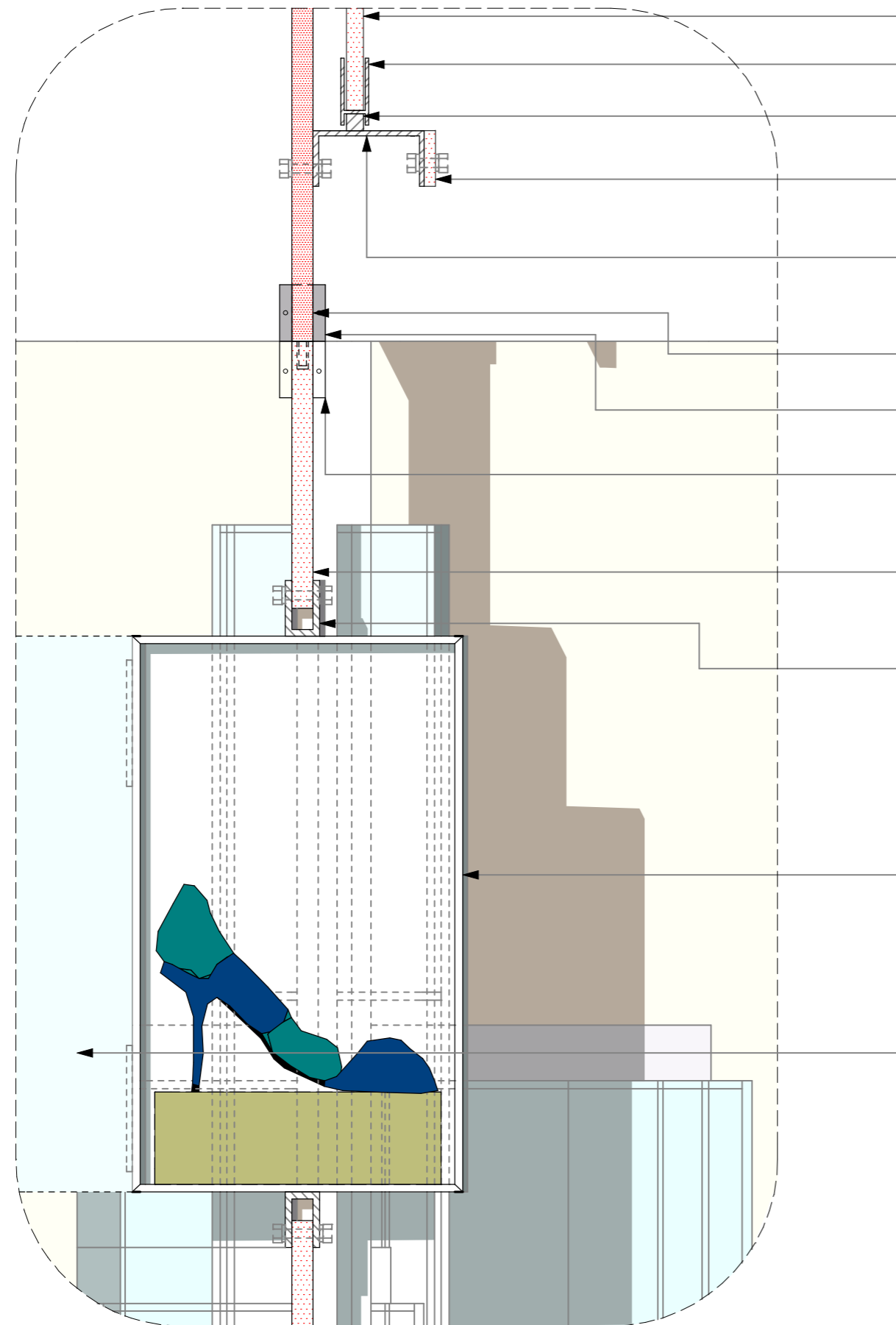
1:20





**DETAIL 01**

**1:5**



- sliding signage/advertising panel
- sliding frame for signage/  
advertising panel
- steel guide
- 1500 x 50 x 10 mm 3Form VARIA Aero panel  
bolted to MS channel  
Colour: white
- 100 x 50 mm MS channel bolted  
to 19 mm 3Form VARIA panel
- 5000 x 1270 x 19 mm 3Form VARIA  
Aero panel, bolted to MS angle  
Colour: white
- DORMA PT 30 overpanel patch with  
pivot 15mm Ø, fixed at centerline of panel
- DORMA PT 20 top patch  
with plastic socket for top pivot,  
fixed at centerline of rotating panel  
(GK 20 with US 10 corner lock to be fitted)
- 2300 x 1000 x 19 mm 3Form VARIA  
rotating panel with display box  
Colour: Alu Bronze
- 300 x 30 x 50 mm aluminium channel profile,  
bolted to 3Form rotating panel
- 300 x 300 x 500 mm high glass display box,  
fixed to aluminium channel,  
6.76mm HPR laminated  
safety glass as per  
Smartglass or similar approved to be used  
FOR ALL EXTERIOR GLASS DISPLAY BOXES  
Glass panel to glass panel fixed by UV bonding
- Hinged back opening panel with  
locking hardware as per specialist



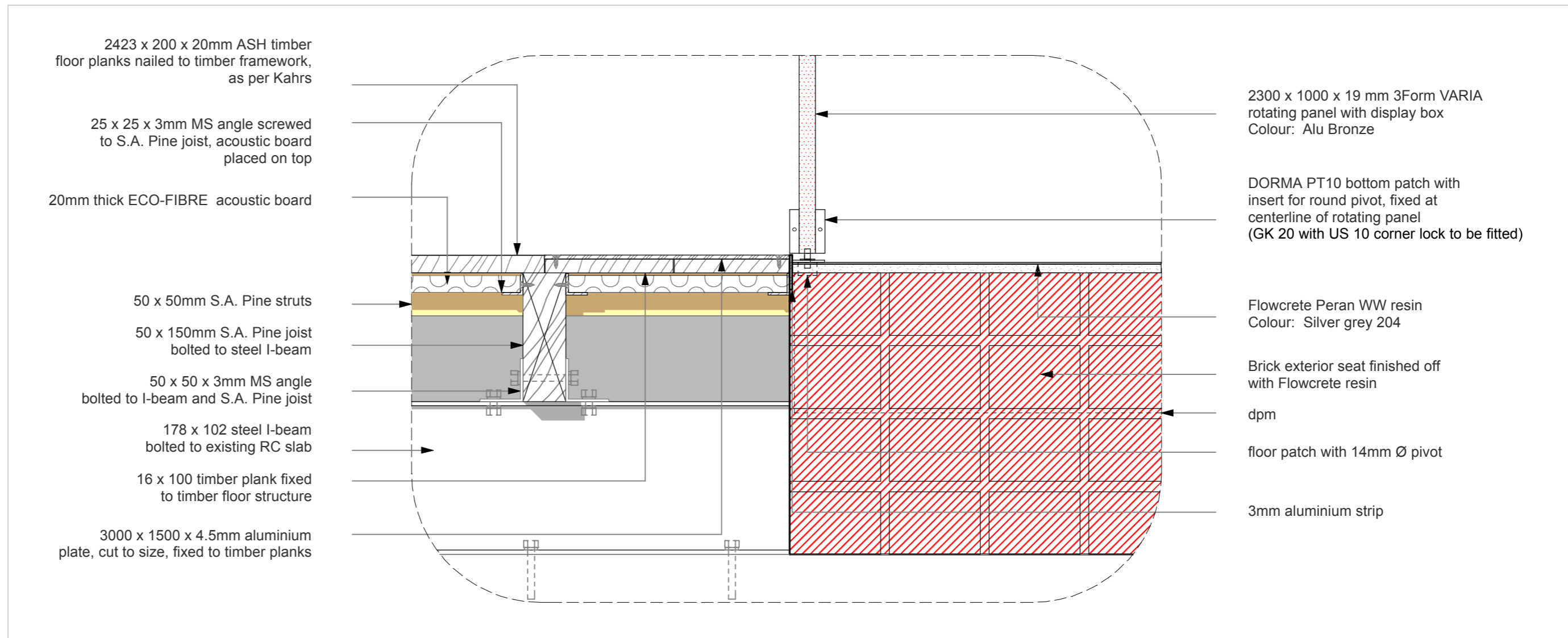
sliding signage/advertising panel

5000 x 1270 x 19mm 3Form VARIA  
Aero panel, bolted to MS angle  
Colour: white

300 x 300 x 500mm high  
glass display box,  
fixed to aluminium channel,  
6.76mm HPR laminated safety glass

2300 x 1000 x 19mm 3Form VARIA  
rotating panel with display box  
Colour: Alu Bronze





**DETAIL 03**    **1:5**

520 x 250 x 50mm  
3Form CHROMA countertop  
curved by heat forming, cut  
in sections to form curved  
countertop and fixed to MS  
channel as per specialist  
Colour: Smoke grey

610 x 23 x 28mm  
Fluorescent tube light  
LUMILUX SPLIT HE -  
Osram, fixed to  
MS channel

10 x 60mm 3Form  
VARIA light cover panel,  
fixed in slit of countertop  
as per specialist  
Colour: Alu Bronze

200 x 75 x 20 x 3mm  
MS channel, bolted to  
3Form countertop,  
acting as power skirting

485 X 25mm 3Form  
VARIA countertop,  
cut in sections to form  
curved countertop, fixed  
to MS angle  
as per specialist  
Colour: Alu Bronze

50 x 50 x 3mm MS angle  
welded to MS hollow  
section framework

382 x 27 x 20mm  
Fluorescent tube light  
LUMILUX SPLIT FM -  
Osram, fixed to  
MS hollow section

100 x 100 x 2mm MS  
hollow section, welded  
to MS channel, acting as  
vertical support framework

525 x 10mm 3Form VARIA  
sidepanel, bolted to vertical  
hollow section support  
framework as per specialist  
Colour: Alu Bronze

750 x 10mm 3Form  
VARIA sidepanel, cut in  
sections to form curved  
counter, bolted to vertical  
hollow section support  
framework as per specialist  
Colour: Alu Bronze

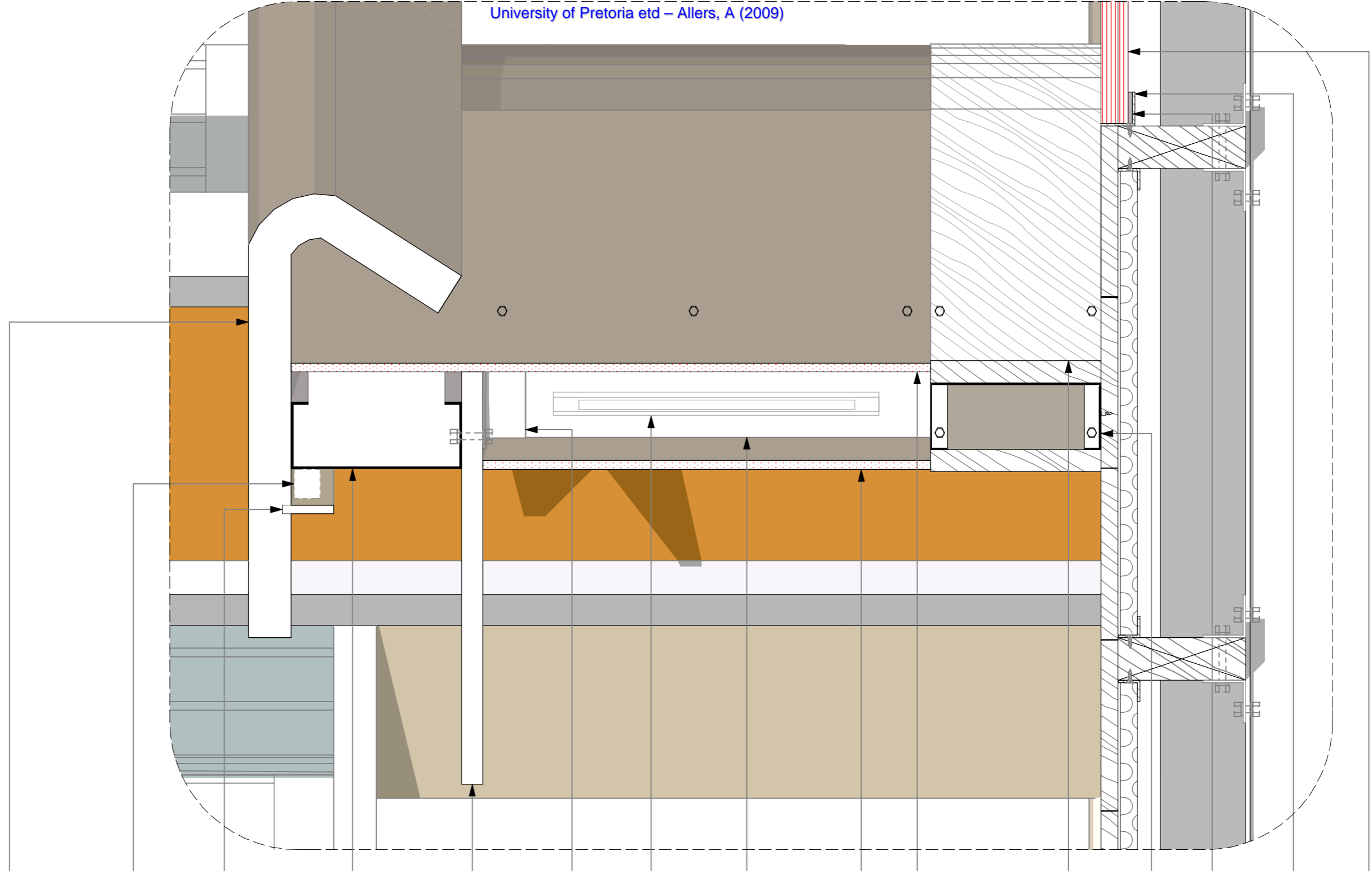
25 x 200mm S.A. Pine  
side panel, finished with  
Plascon whitewash  
effect, fixed MS  
channel framework

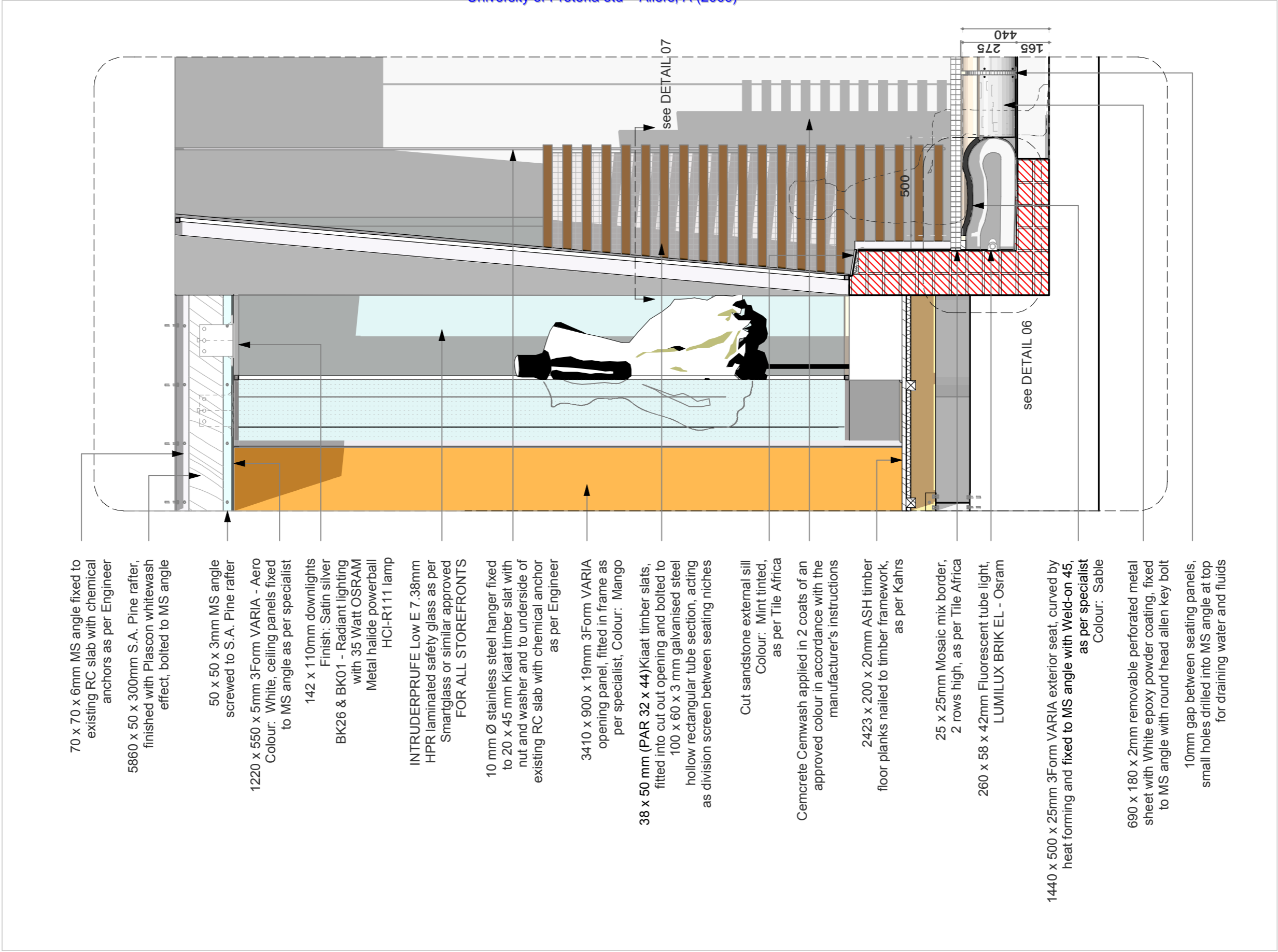
200 x 75 x 20 x 2mm  
MS channel, screwed  
to timber floor planks

6mm hard rubber tape

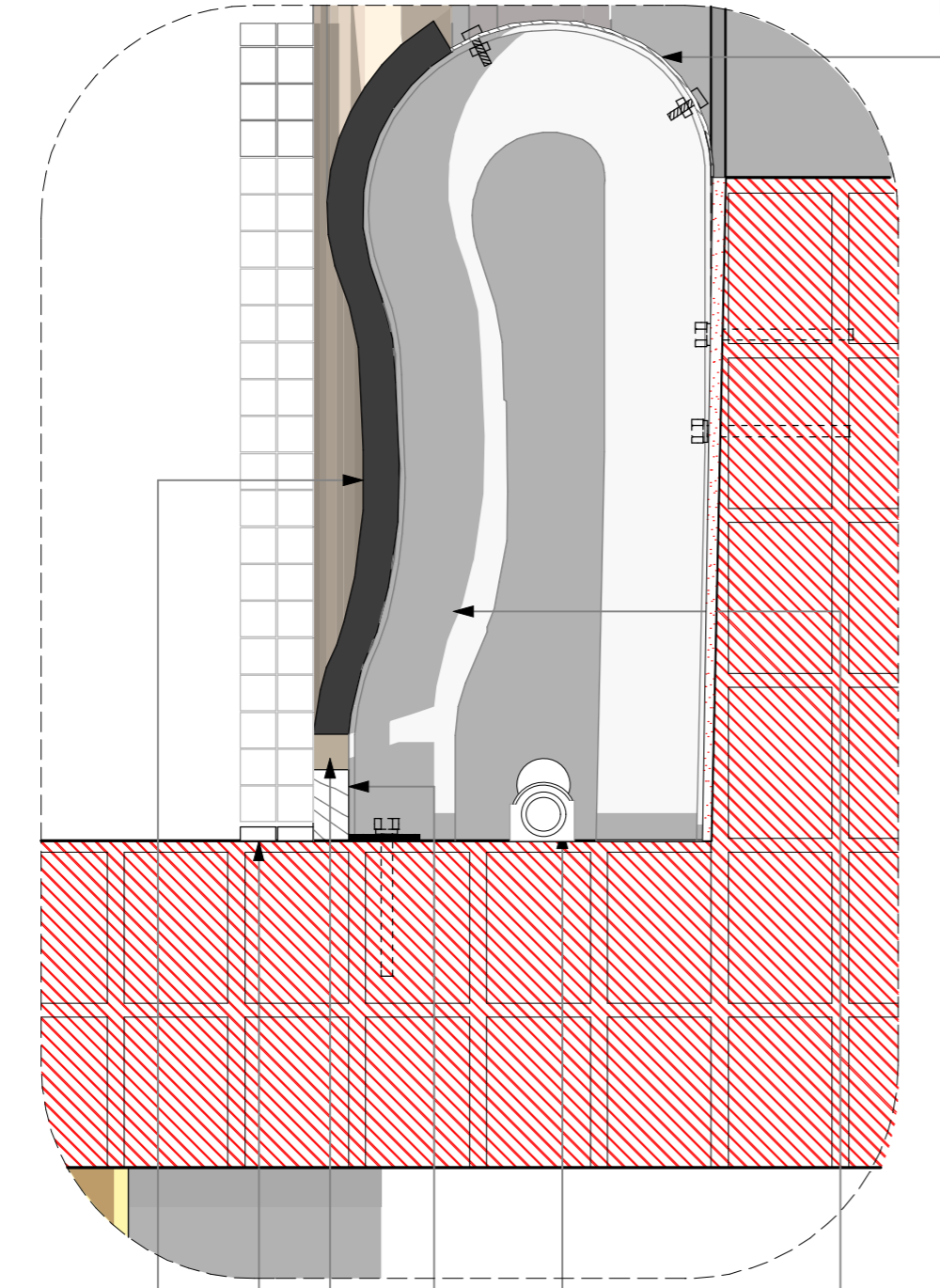
50 x 50 x 3mm  
MS angle framework  
for glass panels  
screwed to joists and  
struts with 16mm  
wood screws

550 x 544 x 32mm  
laminated safety glass  
floor panels as per  
Smartglass or  
similar approved





**DETAIL 05 1:20**



1440 x 500 x 25mm 3Form VARIA exterior seat, curved by heat forming and fixed to MS angle with Weld-on 45, as per specialist Colour: Sable

25 x 25mm Mosaic mix border, 2 rows high, as per Tile Africa shadowline

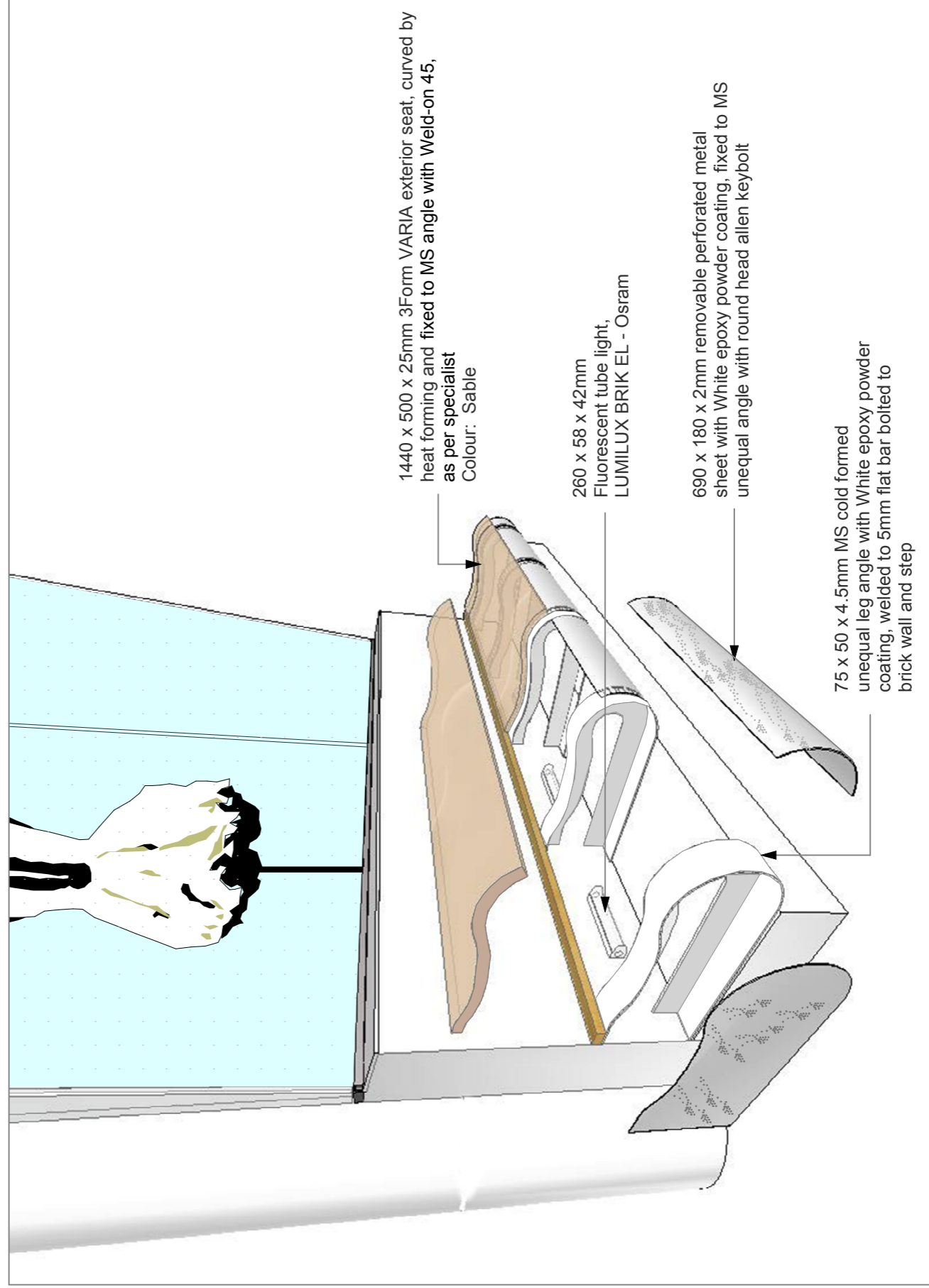
110 x 60 x 3 mm galvanised steel hollow rectangular tube section

260 x 58 x 42mm Fluorescent tube light, LUMILUX BRIK EL - Osram

75 x 50 x 4.5mm MS cold formed unequal leg angle with White epoxy powder coating, welded to 5mm flat bar bolted to brick wall and step

690 x 180 x 2mm removable perforated metal sheet with White epoxy powder coating, fixed to MS unequal angle with round head allen keybolt

## DETAIL 06 1:5

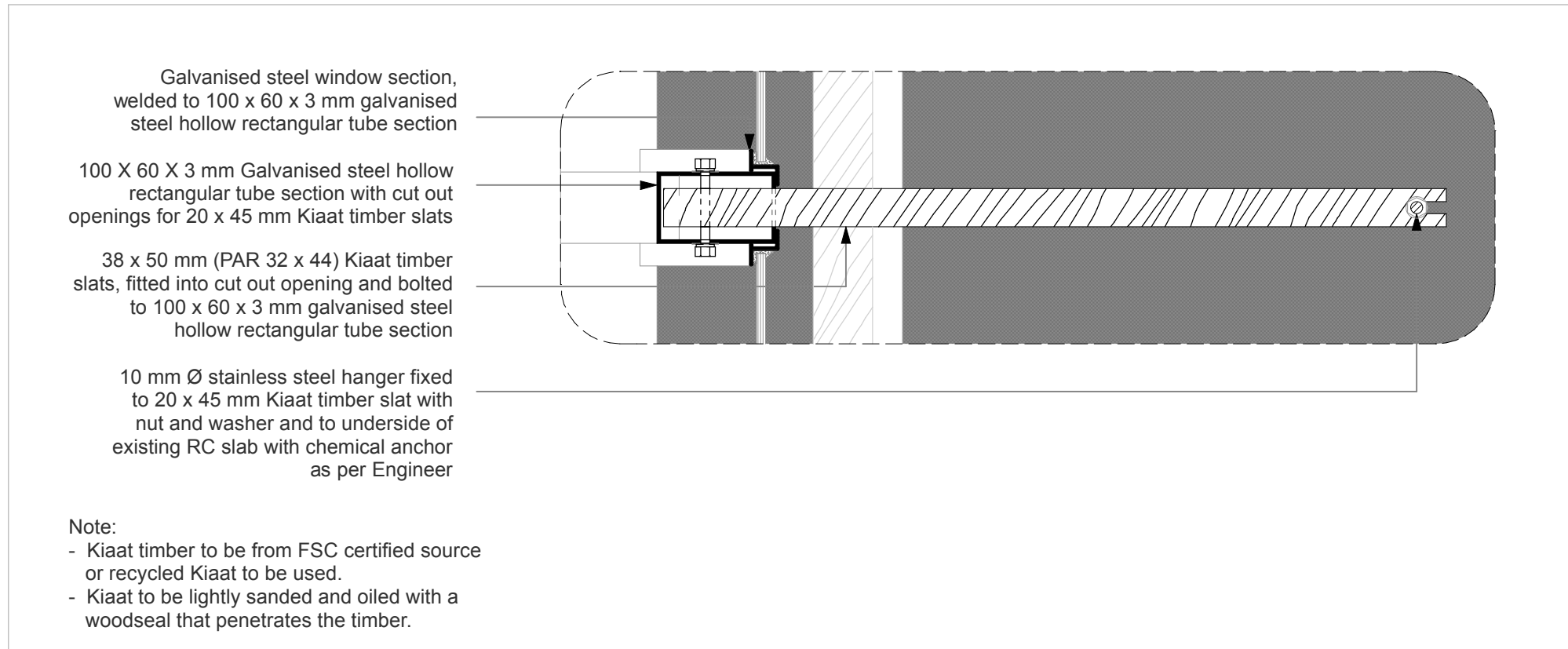


1440 x 500 x 25mm 3Form VARIA exterior seat, curved by heat forming and fixed to MS angle with Weld-on 45, as per specialist Colour: Sable

260 x 58 x 42mm Fluorescent tube light, LUMILUX BRIK EL - Osram

690 x 180 x 2mm removable perforated metal sheet with White epoxy powder coating, fixed to MS unequal angle with round head allen keybolt

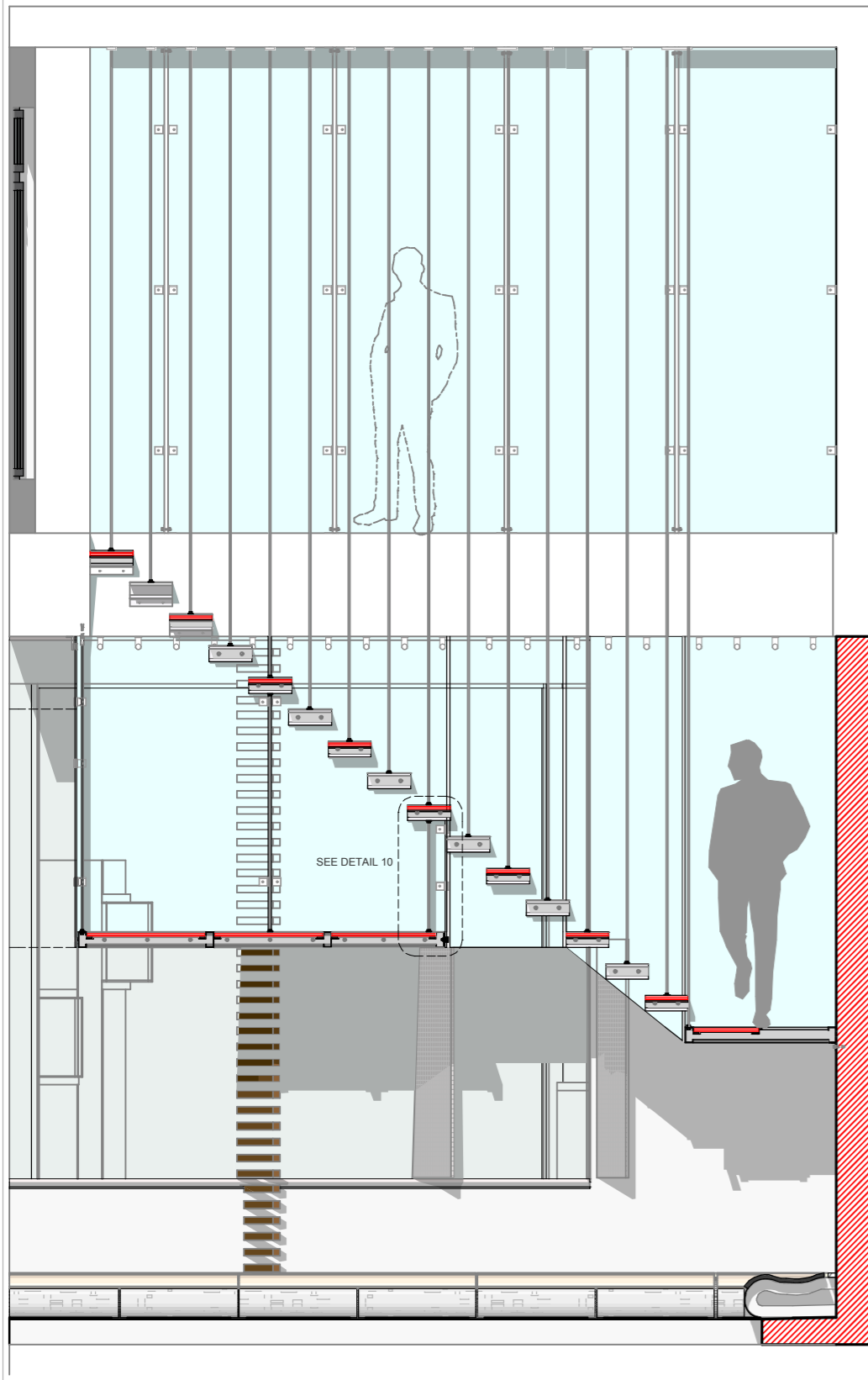
75 x 50 x 4.5mm MS cold formed unequal leg angle with White epoxy powder coating, welded to 5mm flat bar bolted to brick wall and step



**DETAIL 07**

**1:5**





**DETAIL 08 - Detail section through display box**

**1:20**



**STAINLESS STEEL 90°  
GLASS TO GLASS CLAMP**



**STAINLESS STEEL 180°  
GLASS TO GLASS CLAMP**

32 mm smoked laminated safety glass tread, fixed to galvanised steel frame with 6 mm hard rubber tape

6 mm hard rubber tape

100 x 50 x 20 x 3 mm galvanised steel channel fixed to 10 mm Armourplate toughened safety glass panel as per Smartglass, with stainless steel button head single point fixing

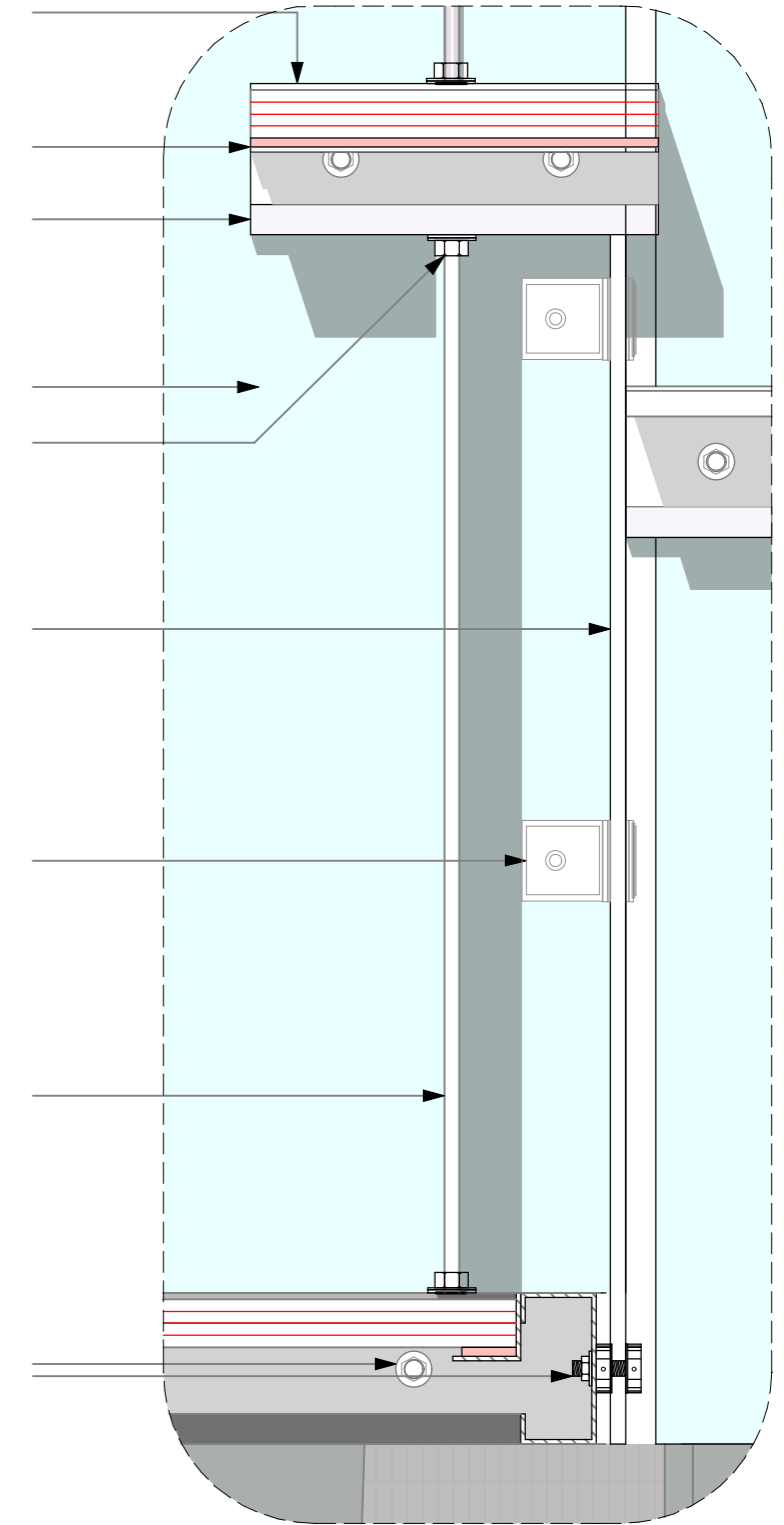
Display box suspended underneath staircase: galvanised steel channel framework with 10 mm Armourplate toughened safety glass panels, suspended from 100 x 50 x 20 x 3 mm galvanised steel channel of treads above

10mm Armourplate toughened safety glass back panel of suspended display box, connected to side glass panel with stainless steel 90° glass to glass clamp, as per specialist

Stainless steel 90° glass to glass clamp

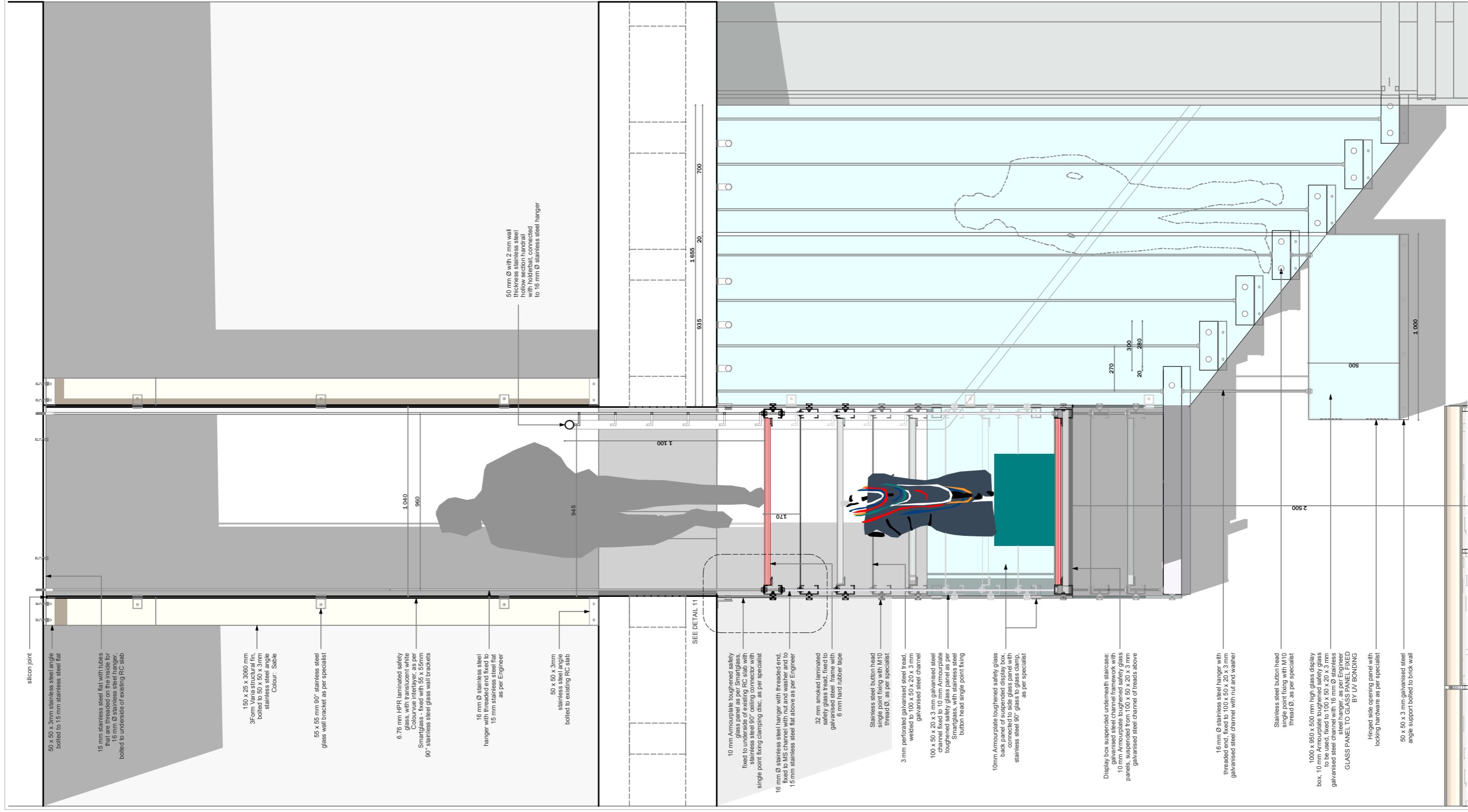
16 mm Ø stainless steel hanger with threaded end, fixed to 100 x 50 x 20 x 3 mm galvanised steel channel with nut and washer

Stainless steel button head single point fixing with M10 thread Ø, as per specialist

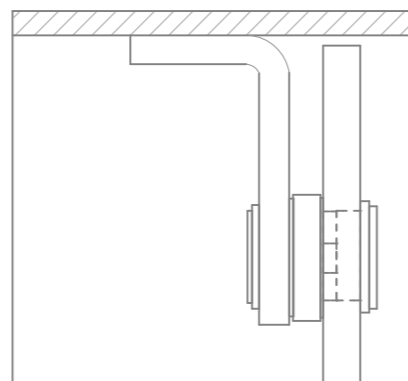


**DETAIL 10**

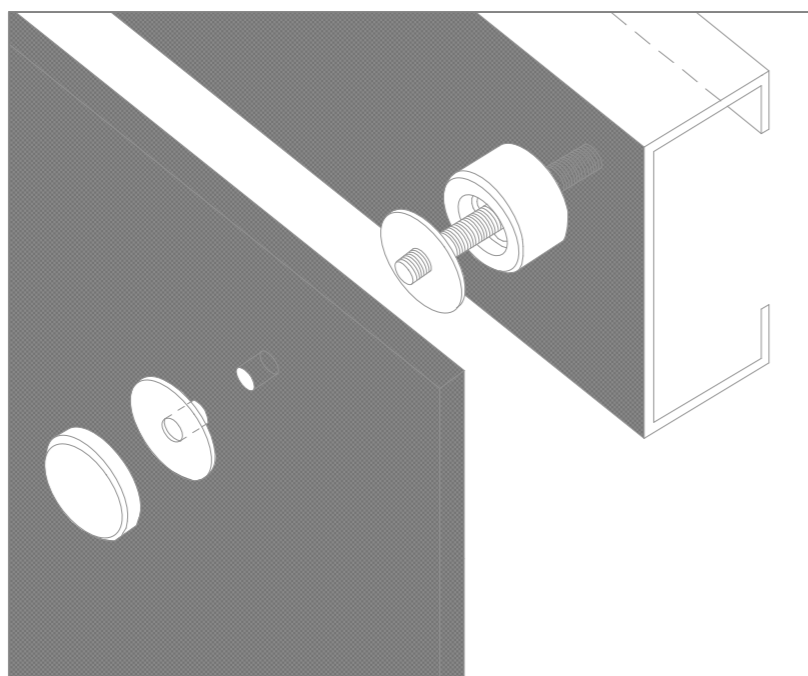
**1:5**



DETAIL 09 - Detail section of staircase with display box 1:20



**STAINLESS STEEL 90° CEILING CONNECTOR WITH SINGLE POINT FIXING CLAMPING DISC**



**STAINLESS STEEL BUTTON HEAD SINGLE POINT FIXING**

10 mm Armourplate toughened safety glass panel as per Smartglass, fixed to underside of existing RC slab with stainless steel 90° ceiling connector with single point fixing clamping disc, as per specialist

90° stainless steel ceiling connector with single point fixing clamping disc

16 mm Ø stainless steel hanger with threaded end, fixed to MS channel with nut and washer and to 15 mm stainless steel flat above as per Engineer

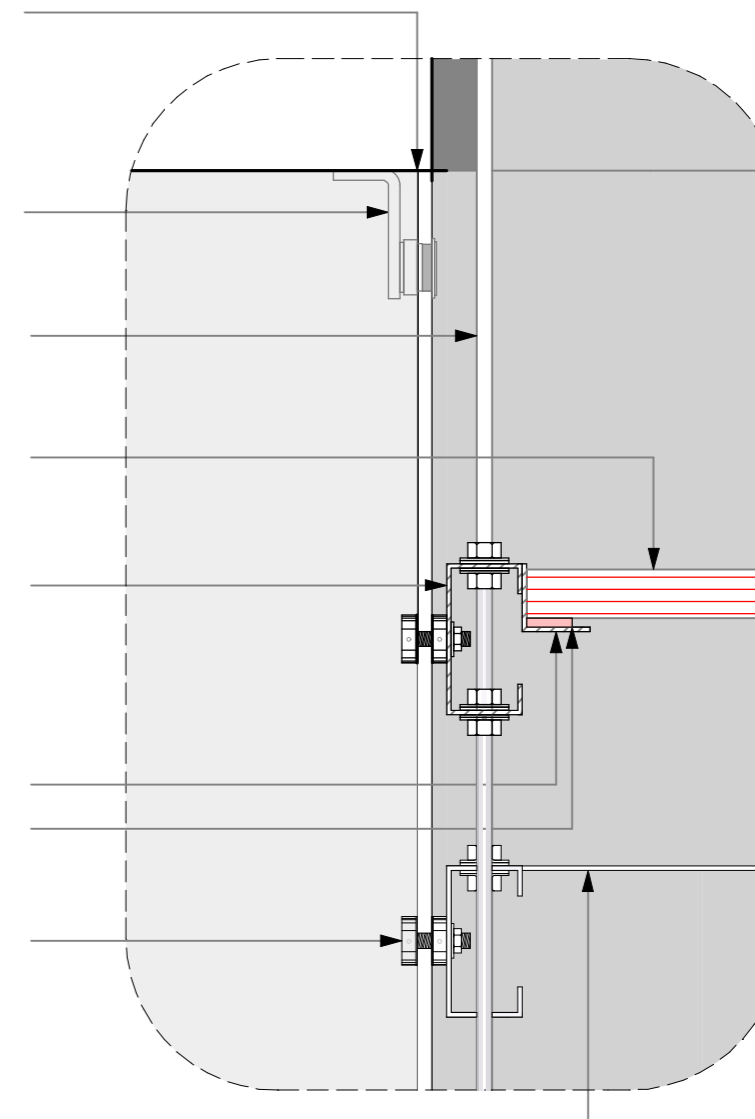
32 mm smoked laminated safety glass tread, fixed to galvanised steel frame with 6 mm hard rubber tape

100 x 50 x 20 x 3 mm galvanised steel channel fixed to 10 mm Armourplate toughened safety glass panel as per Smartglass, with stainless steel button head single point fixing

40 x 40 x 3 mm MS angle, welded to MS channel  
6 mm hard rubber tape

Stainless steel button head single point fixing with M10 thread Ø, as per specialist

3 mm perforated galvanised steel tread, welded to 100 x 50 x 20 x 3 mm galvanised steel channel



**DETAIL 11**

**1:5**