



northern elevation



southern elevation

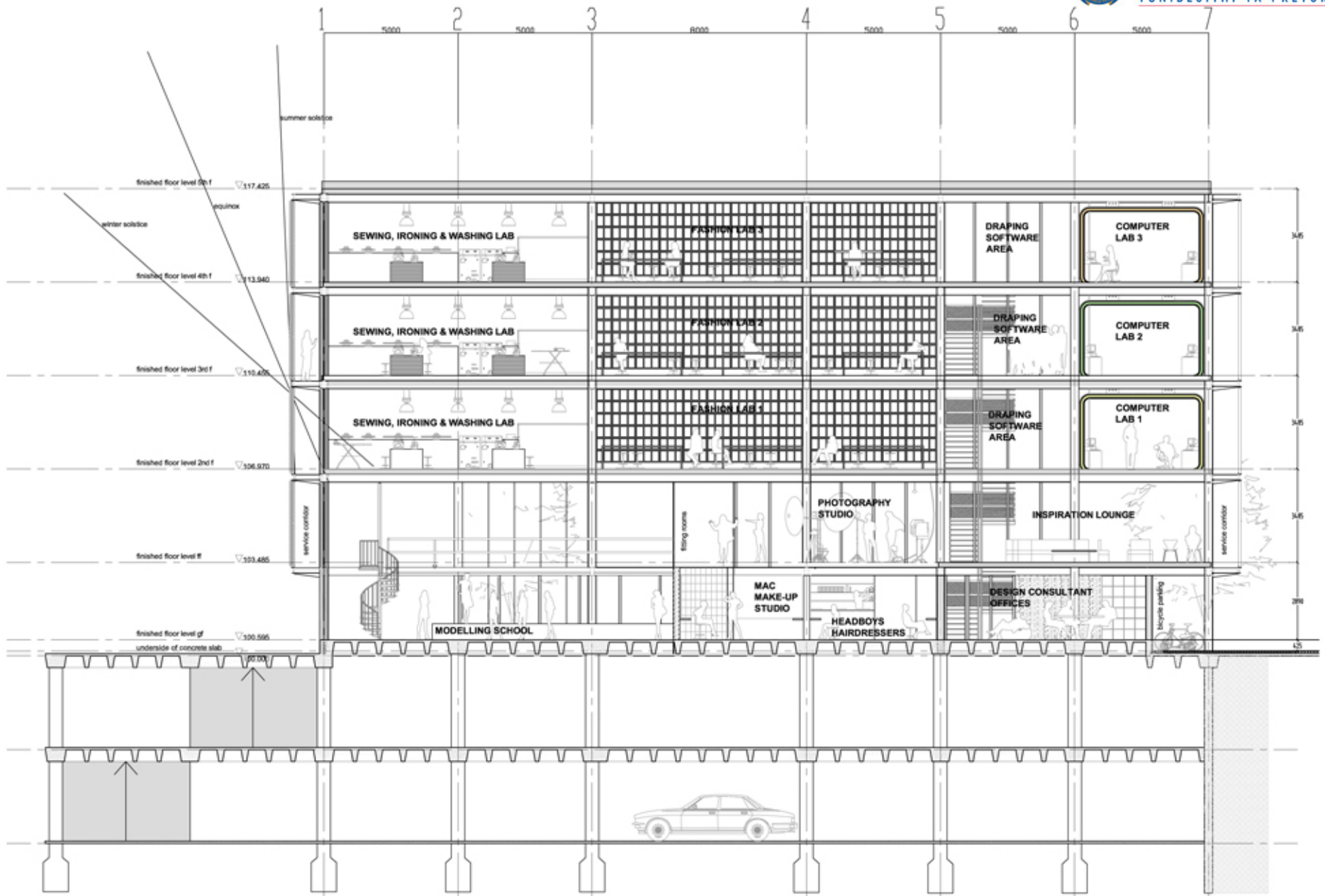
13.1



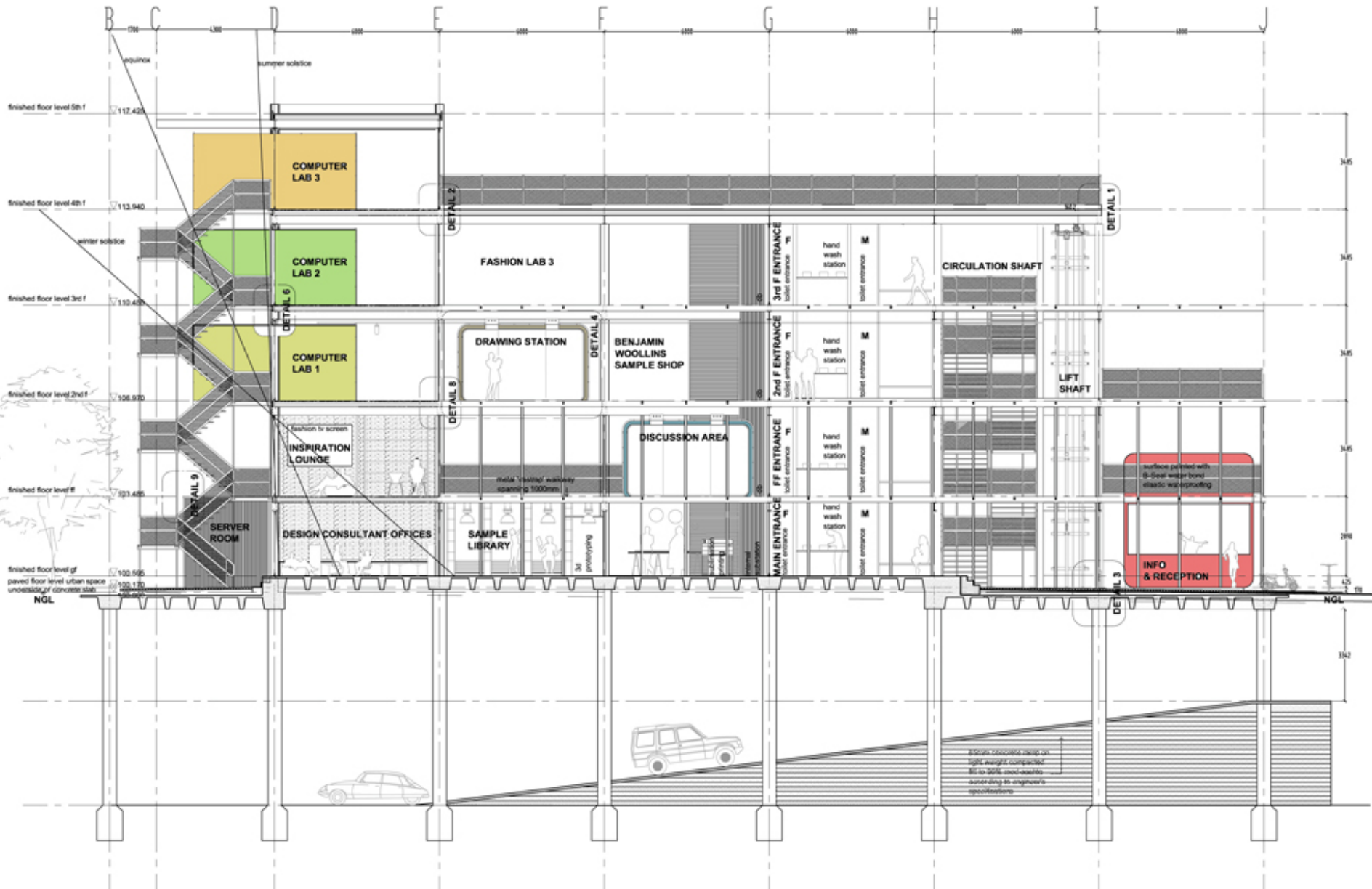
western elevation

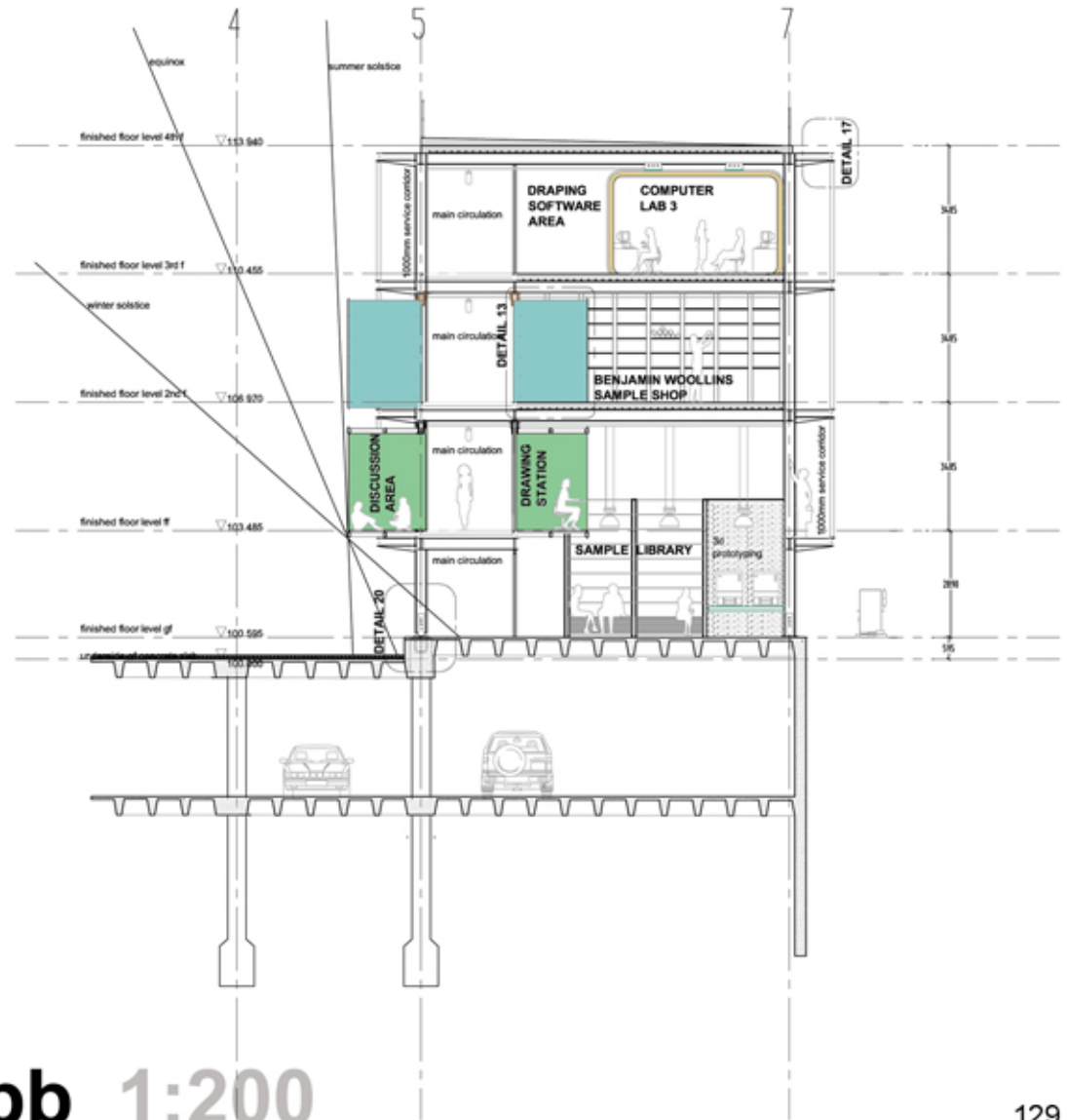


eastern elevation

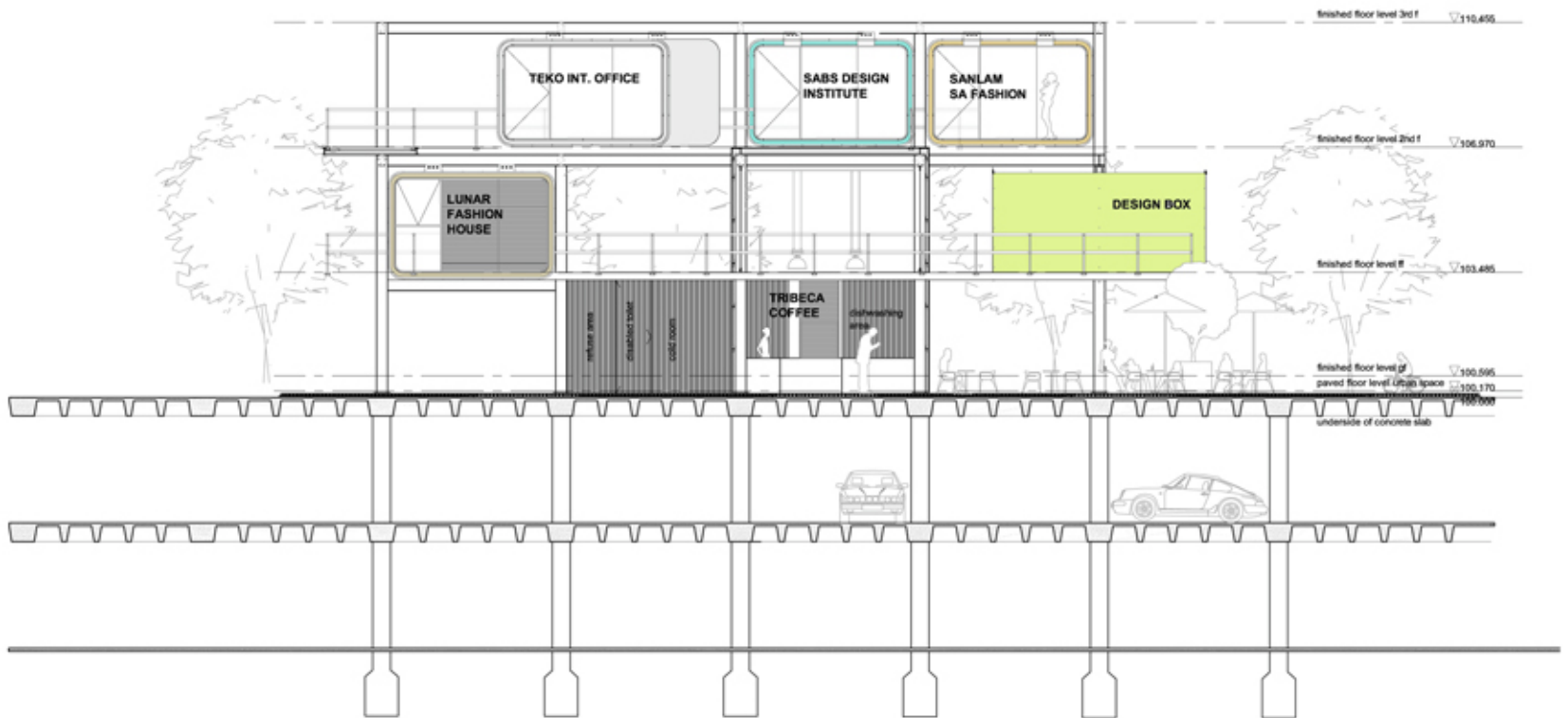


13.3
knoop section 1:200





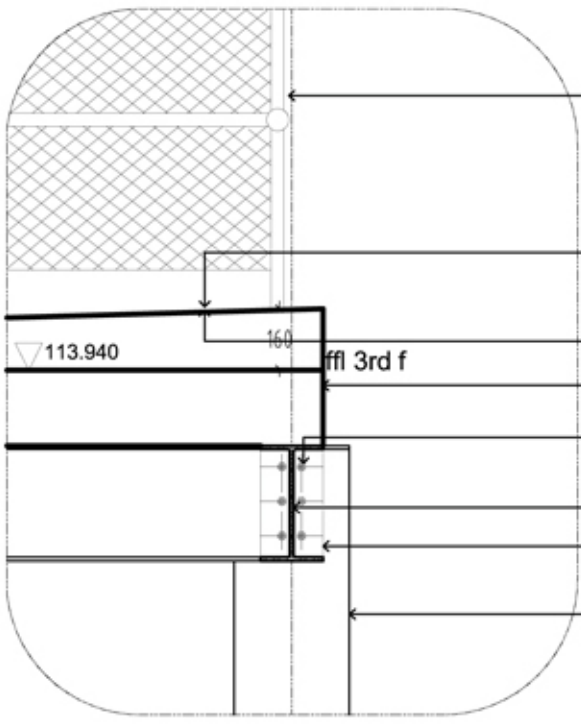
link section bb 1:200



kraal section 1:200

DETAIL 1

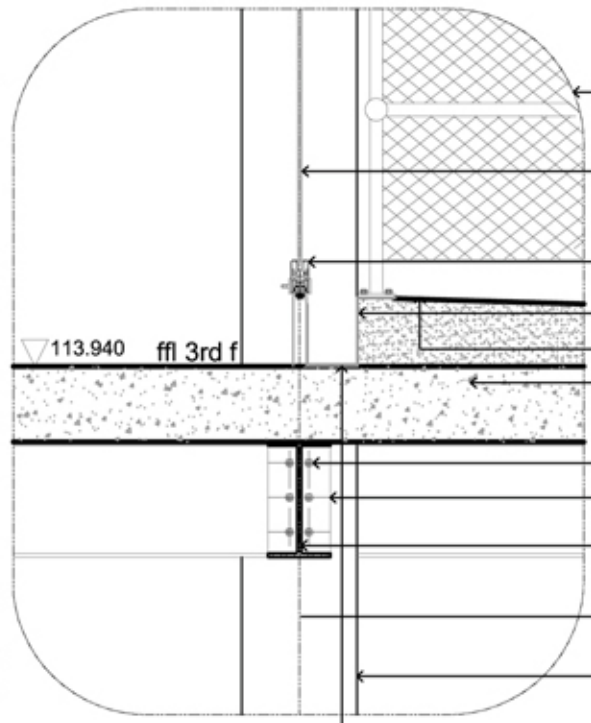
1:20



- standard mild steel stanchion balustrade with link chain fencing to comply with safety requirements fixed to slab
- screed 194mm @ highest point to allow min fall 1:50 towards fullbore on eastern edge
- elastomeric modified membrane waterproofing
- 200mm post tensioning slab per engineer's description
- high tension bolts with hexagonal ss nut cap according to engineer's specifications
- 165x305mm Universal Beam according to engineer
- mild steel base plate according to engineer's specifications
- 305x305 H columns according to engineer's specifications

DETAIL 2

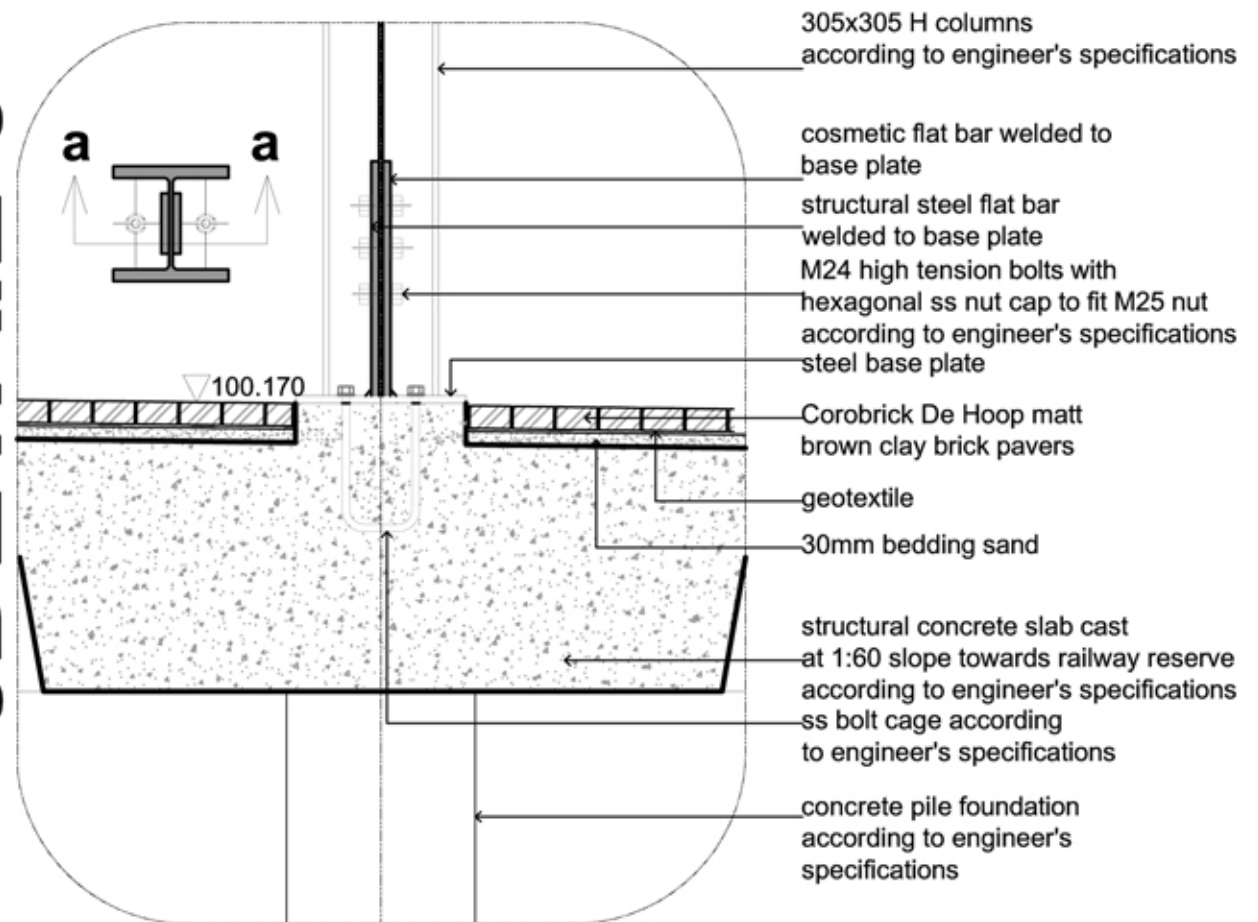
1:20



- standard mild steel stanchion balustrade with link chain fencing to comply with safety requirements
- Smartglass Coolvue Clear glass In Dorma 120-1DL sliding door system 5,8 (W/m2).k U-value 35 ISO
- purpose made black powder coated aluminium frame
- stainless steel 'vastrap' cold bent stair
- elastomeric modified membrane waterproofing
- 200mm post tensioning slab per engineer's description
- high tension bolts with hexagonal ss nut cap according to engineer's specifications
- mild steel base plate according to engineer's specifications
- 165x305mm Universal Beam according to engineer
- screed cast @ 1:50 towards full bores on eastern edge of roof
- 305x305 H columns according to engineer's specifications
- gutter

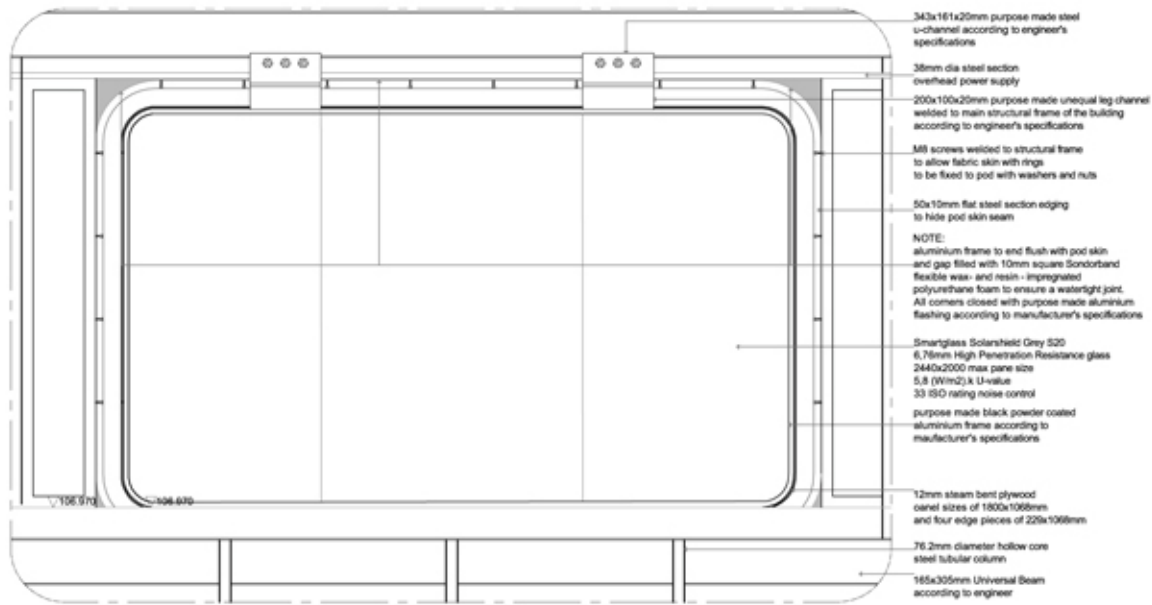
DETAIL 3

1:20



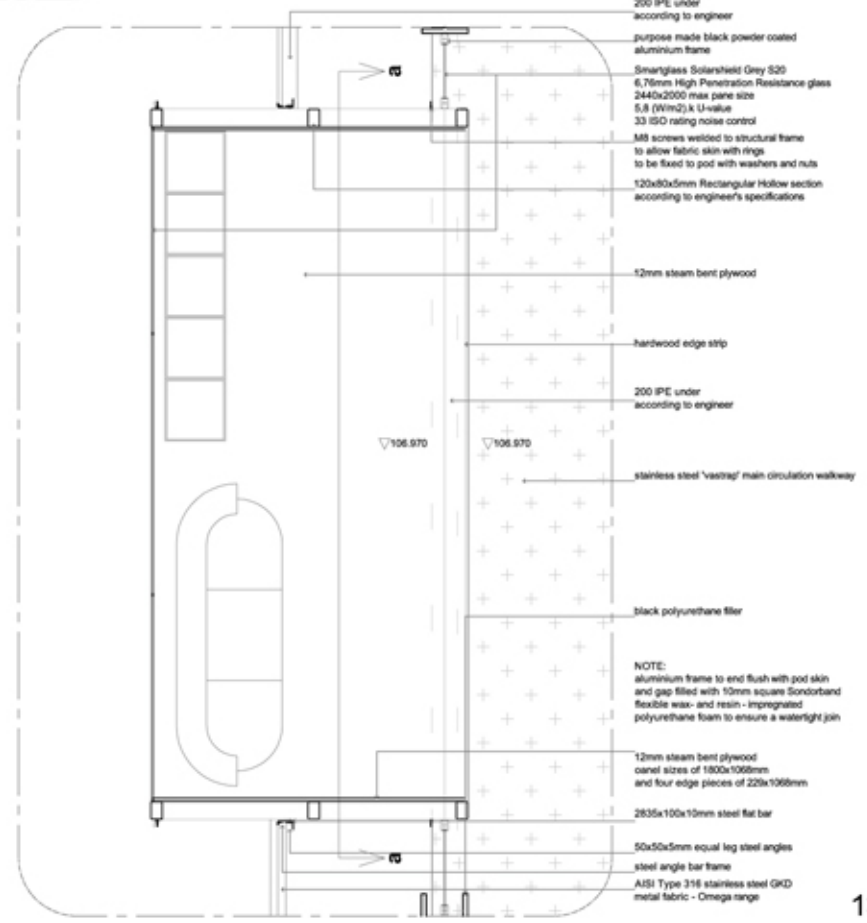
DETAIL4

1:50
a a



DETAIL5

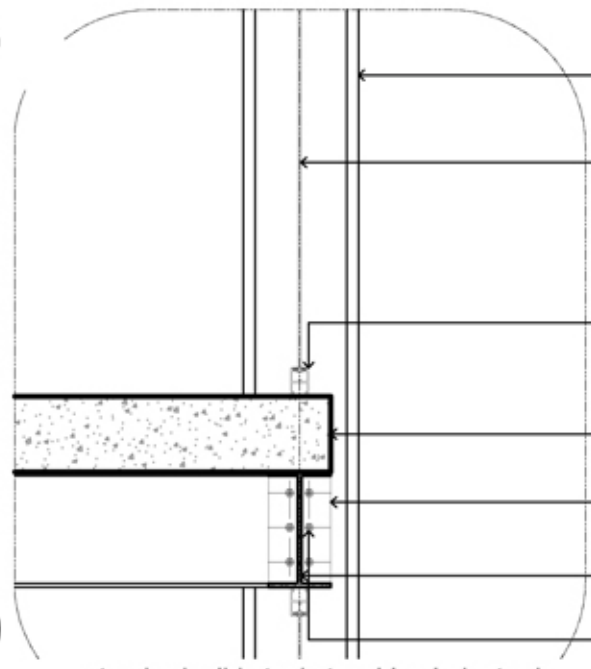
1:50
a a





DETAIL 6

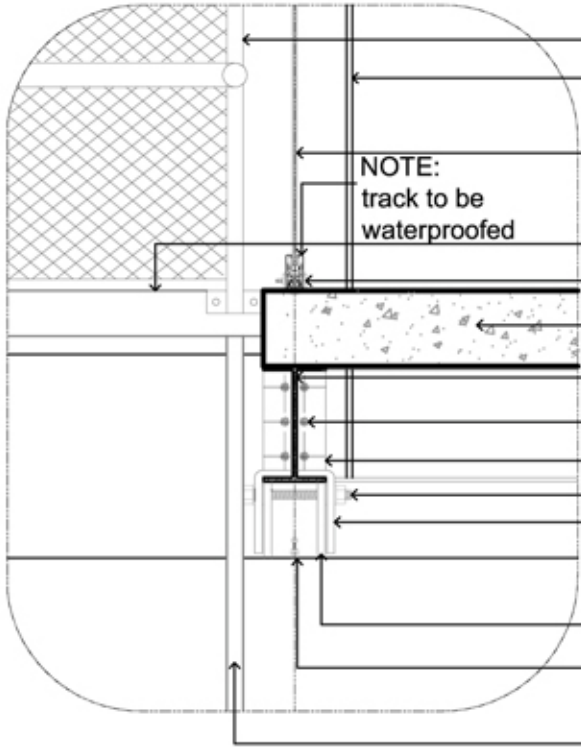
1:20
a a



- 305x305 H col according to engineer's specifications
- Smartglass Coolvue Clear glass 5,8 (W/m²).k U-value 35 ISO
- purpose made black powder coated aluminium frame according to manufacturer's specifications
- 200mm post tensioning slab per engineer's description
- mild steel base plate according to engineer's specifications
- 165x305mm Universal Beam according to engineer
- high tension bolts with hexagonal ss nut cap according to engineer's specifications

DETAIL 7

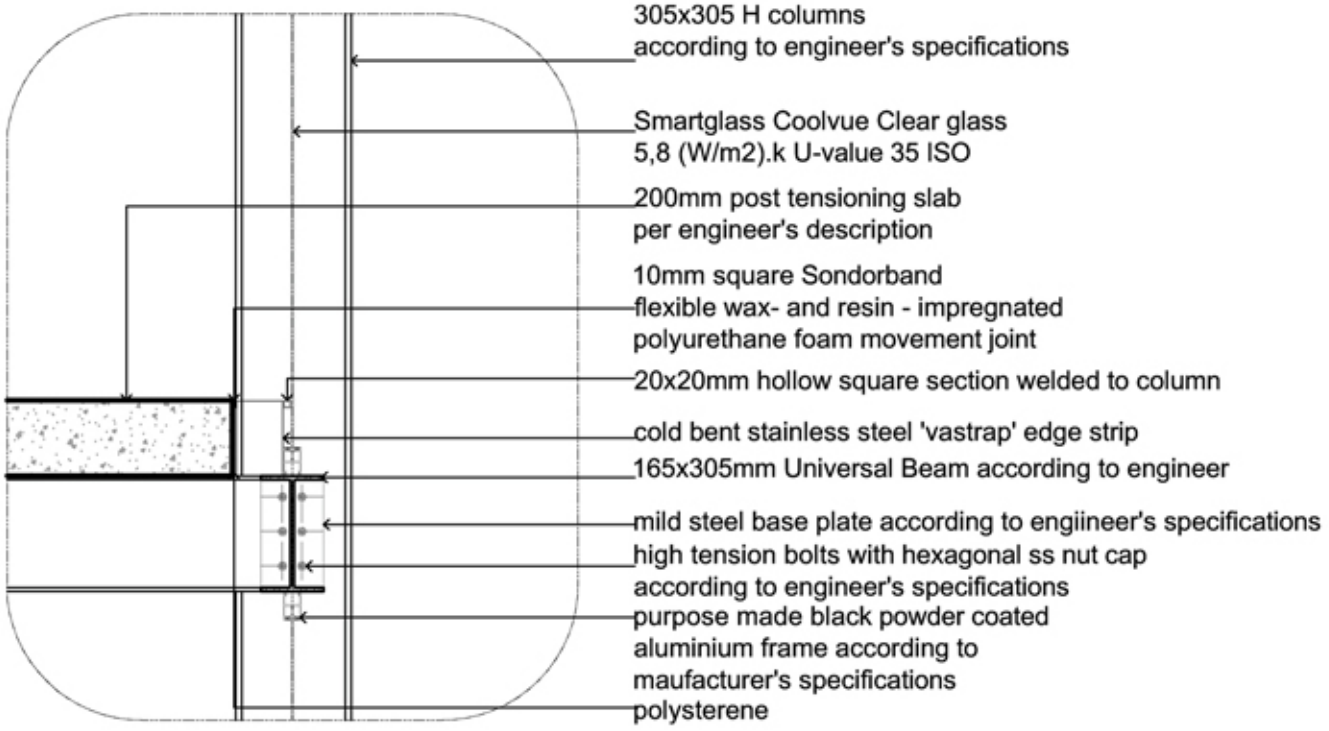
1:20



- standard mild steel stanchion balustrade with link chain fencing to comply with safety requirements
- 305x305 H columns according to engineer's specifications
- Smartglass Coolvue Clear glass In Dorma 120-1DL sliding door system 5,8 (W/m²).k U-value 35 ISO
- NOTE: track to be waterproofed
- vastrap landing supported by 75mm equal leg angle cleats
- purpose made black powder coated aluminium frame
- 200mm post tensioning slab per engineer's description
- 165x305mm Universal Beam according to engineer
- high tension bolts with hexagonal ss nut cap according to engineer's specifications
- mild steel base plate according to engineer's specifications
- M24 threaded rod according to engineer's specifications
- 200x100x20mm purpose made unequal leg channel welded to main structural frame of the building according to engineer's specifications
- 343x161x20mm purpose made steel u-channel according to engineer's specifications
- 38,10 hot rolled hollow tubular section staircase column frame

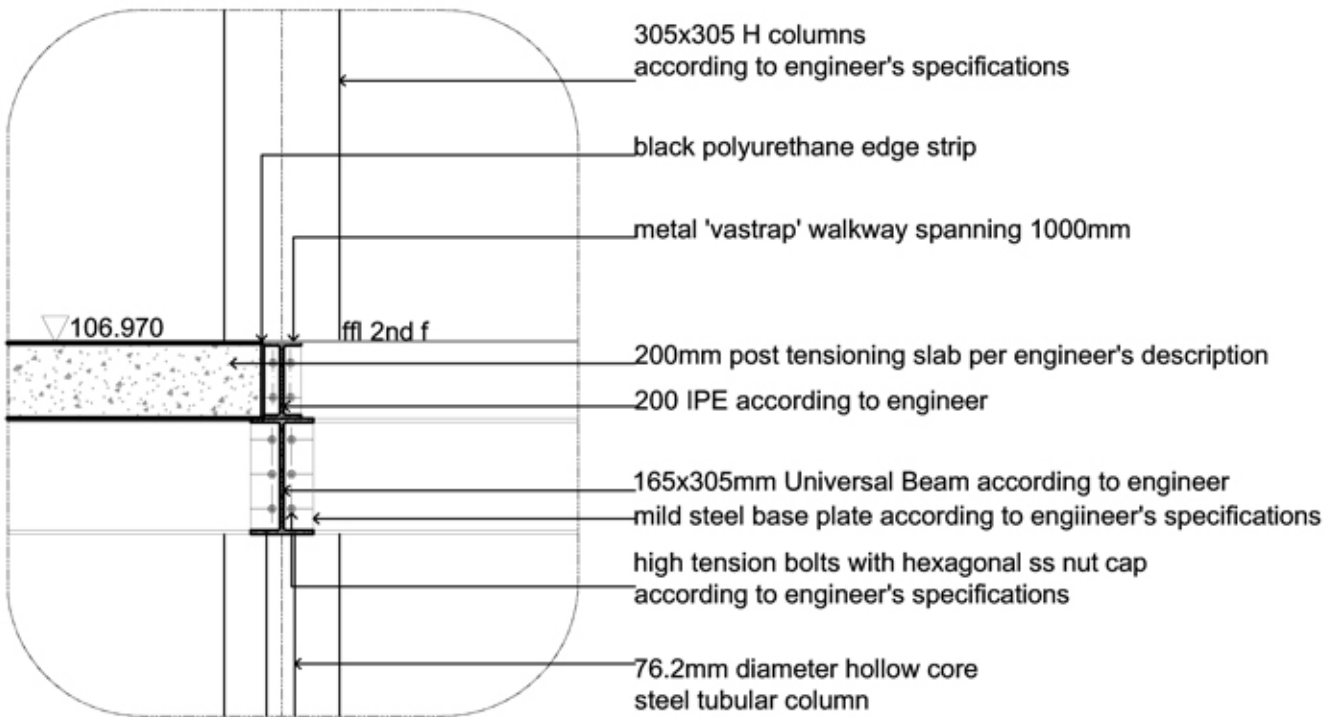
DETAIL 8

1:20
a a



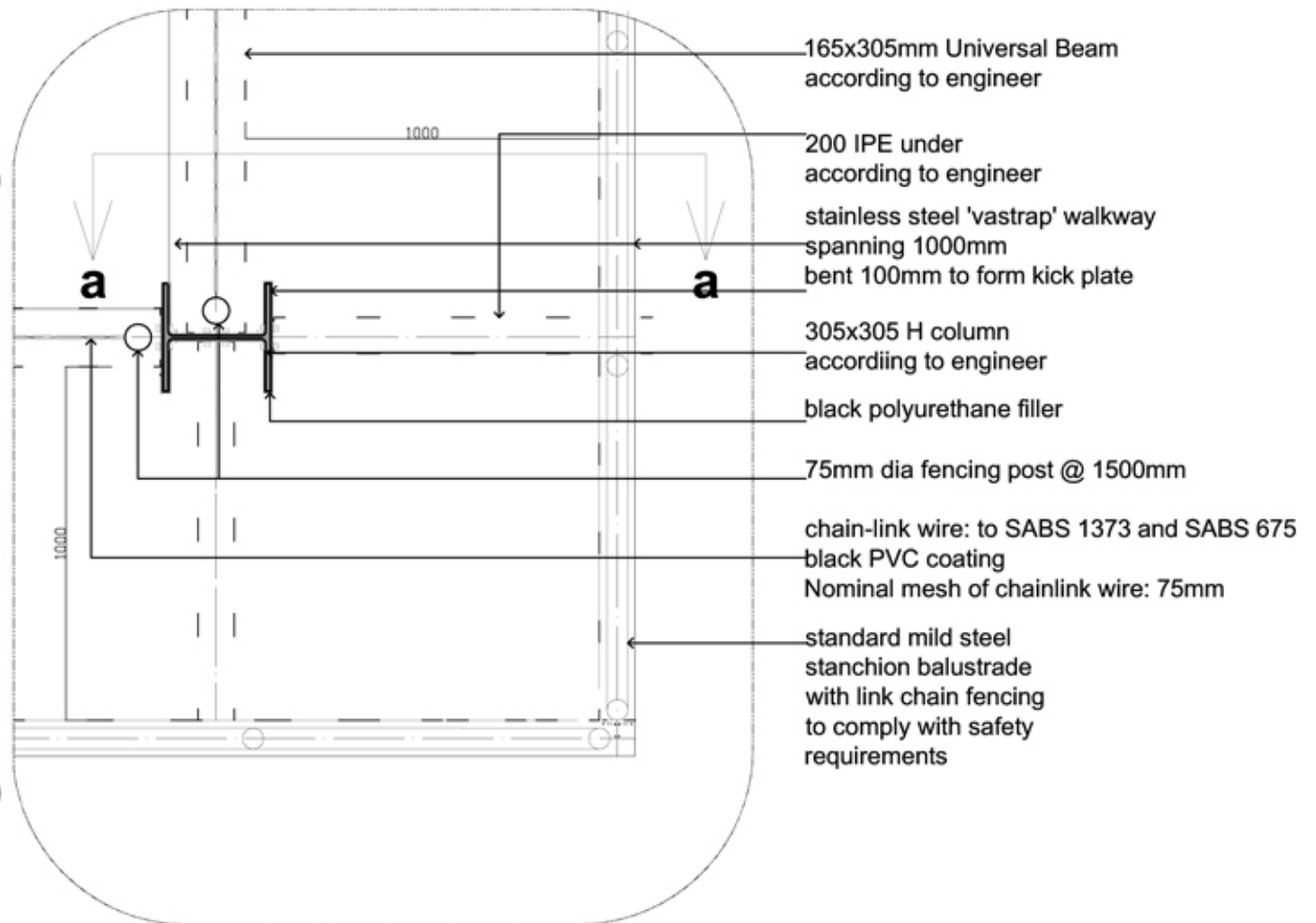
DETAIL 9

1:20

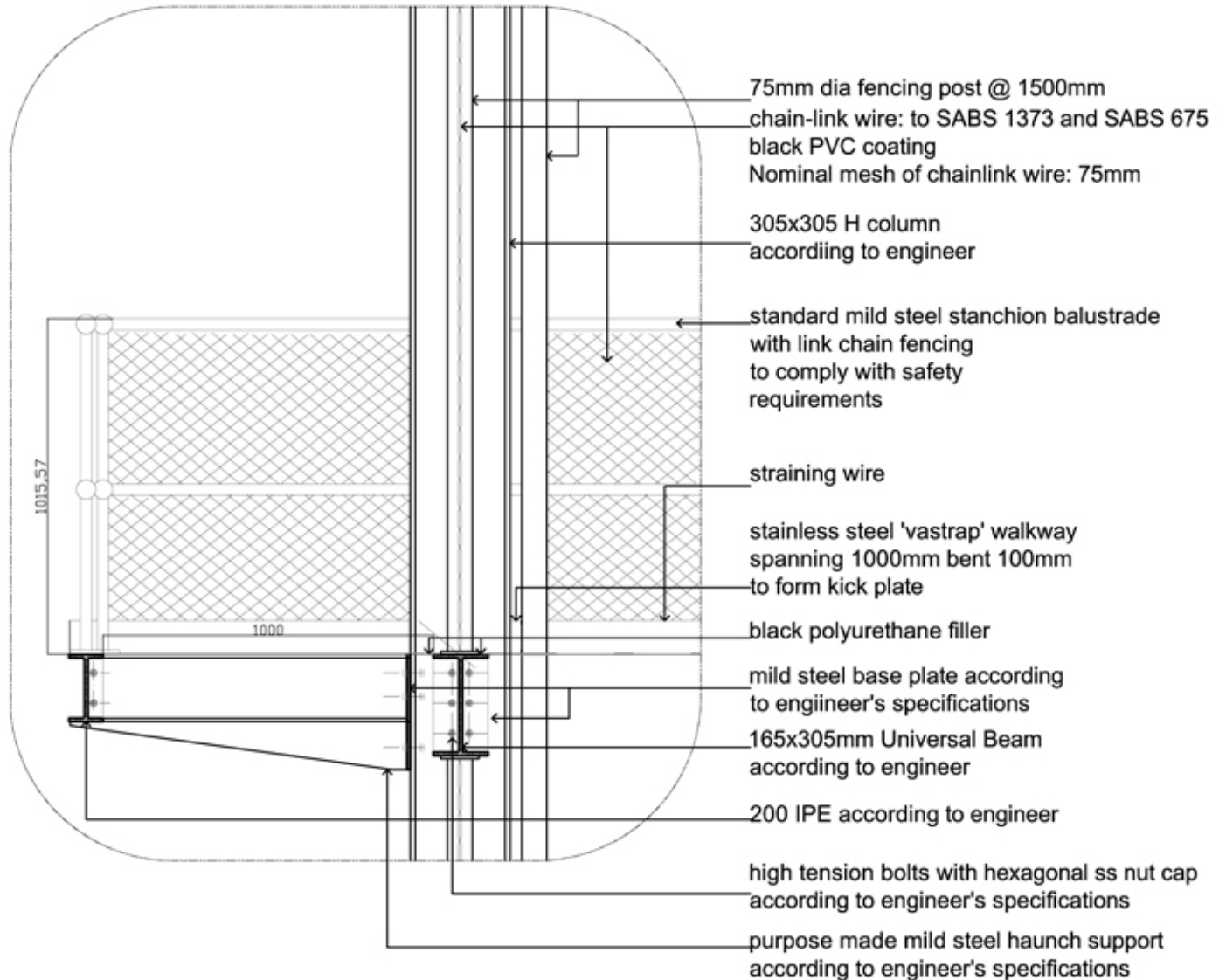


DETAIL 10

1:20

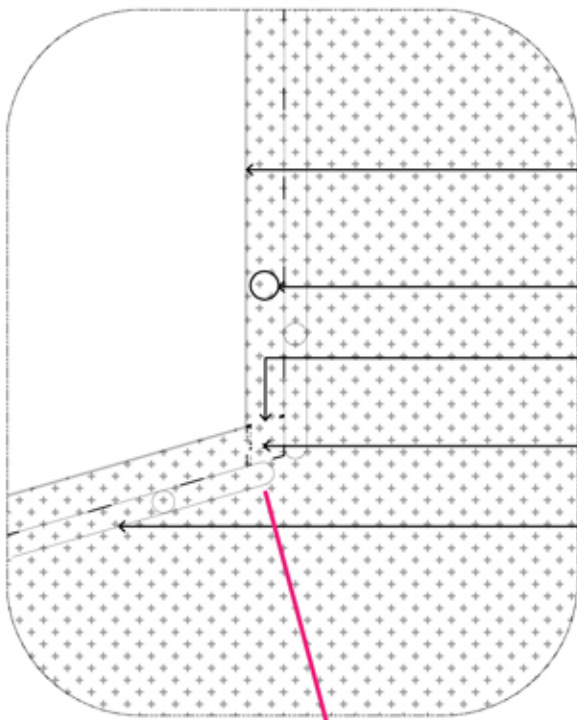


DETAIL 11
 1:20
 a a

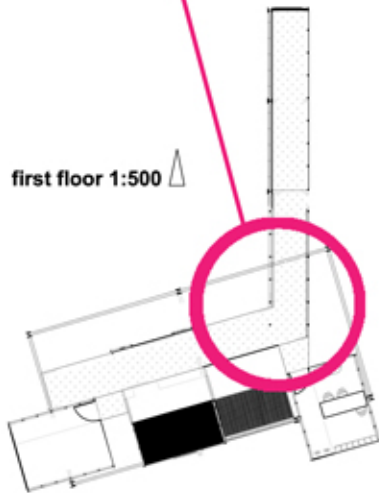


DETAIL 12

1:20



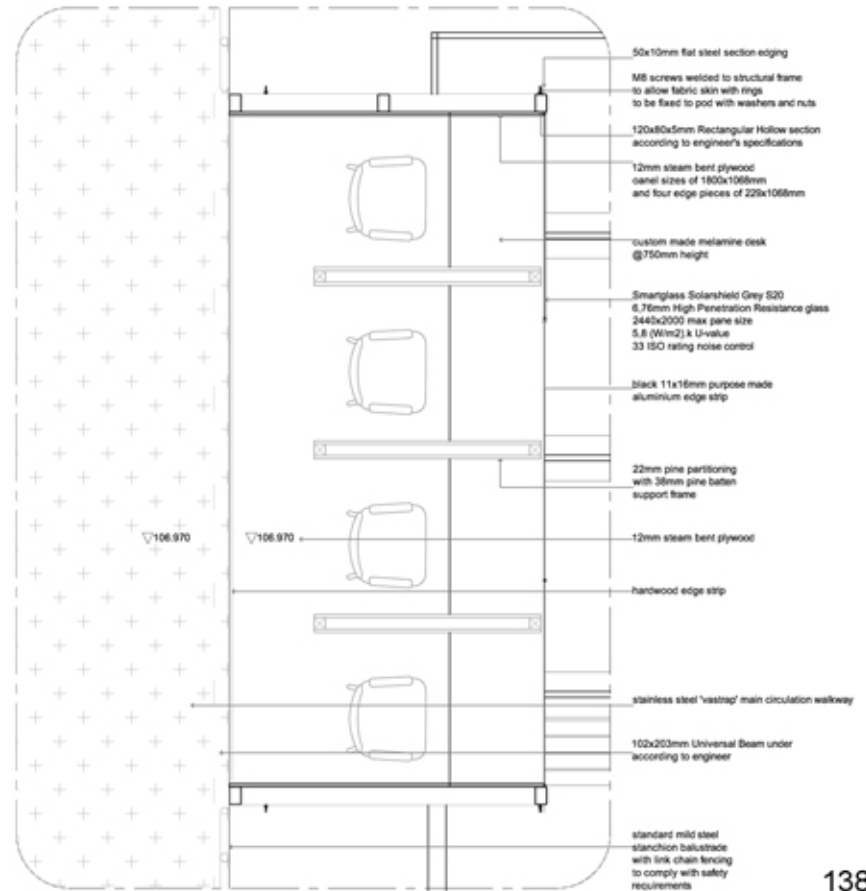
- stainless steel 'vastrap' walkway spanning 1000mm bent 100mm to form kick plate
- 76.2mm diameter hollow core steel tubular columns base plates welded to walkways @ 1500mm spacing
- 4mm mild steel cosmetic plate
- purpose made mild steel detail connector according to engineer's specifications
- standard mild steel stanchion balustrade with link chain fencing to comply with safety requirements



first floor 1:500

DETAIL 13

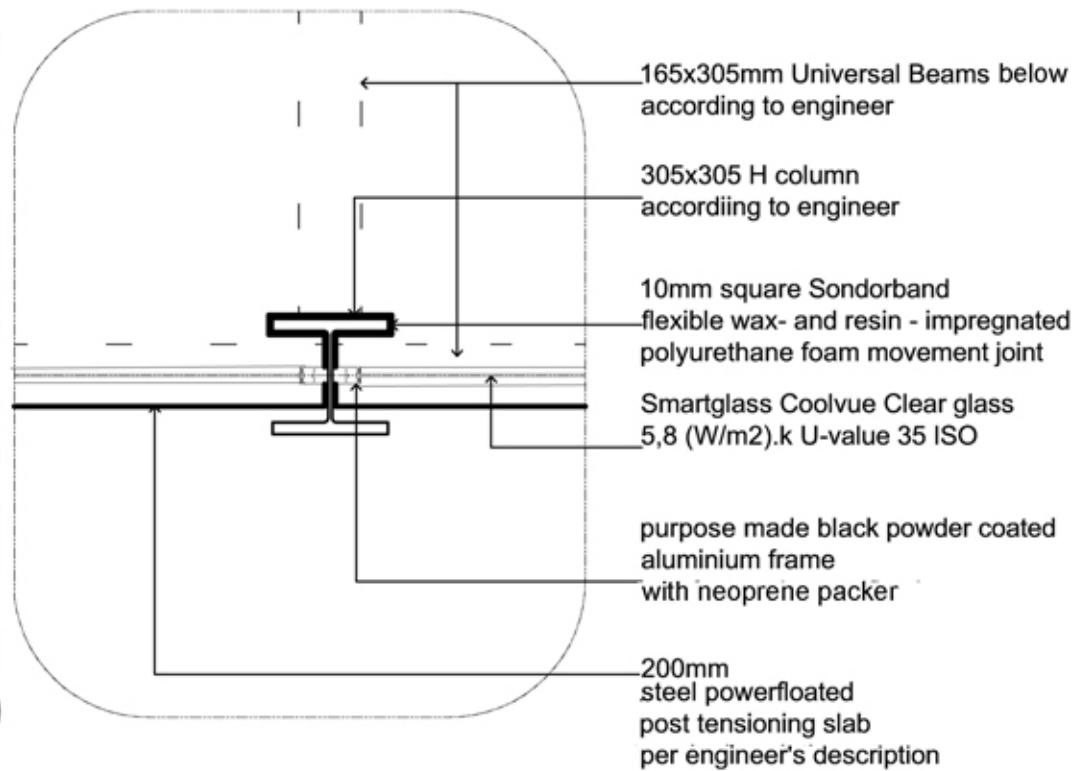
1:50



- 50x10mm flat steel section edging
- M6 screws welded to structural frame to allow fabric skin with rings to be fixed to post with washers and nuts according to engineer's specifications
- 120x80x5mm Rectangular Hollow section according to engineer's specifications
- 12mm steam bent plywood panel sizes of 1800x1068mm and four edge pieces of 229x1068mm
- custom made melamine desk @750mm height
- Smartglass Solarshield Grey 520 6.76mm High Penetration Resistance glass 2440x2000 max pane size 5.8 (W/m2) & U-value 33 ISO rating noise control
- black 11x16mm purpose made aluminium edge strip
- 22mm pine partitioning with 38mm pine batten support frame
- 12mm steam bent plywood
- hardwood edge strip
- stainless steel 'vastrap' main circulation walkway
- 102x203mm Universal Beam under according to engineer
- standard mild steel stanchion balustrade with link chain fencing to comply with safety requirements

DETAIL 14

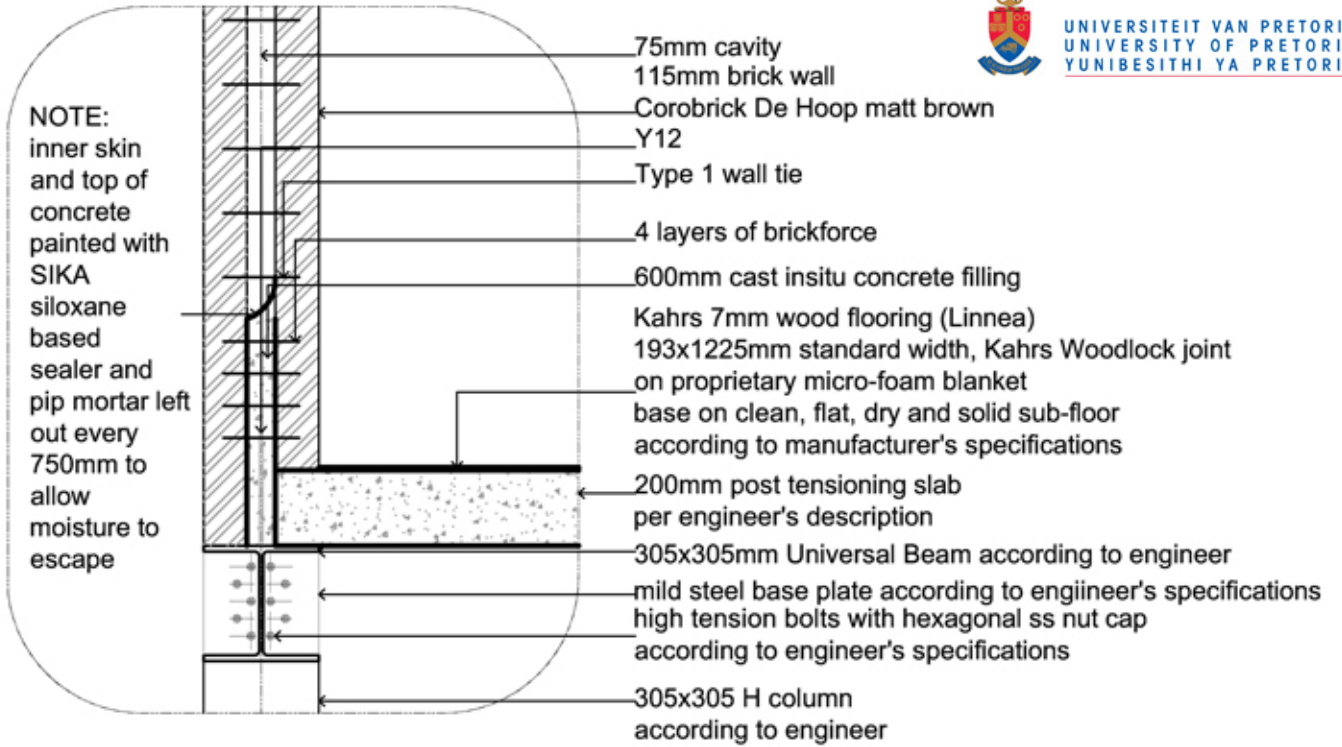
1:20



DETAIL 15

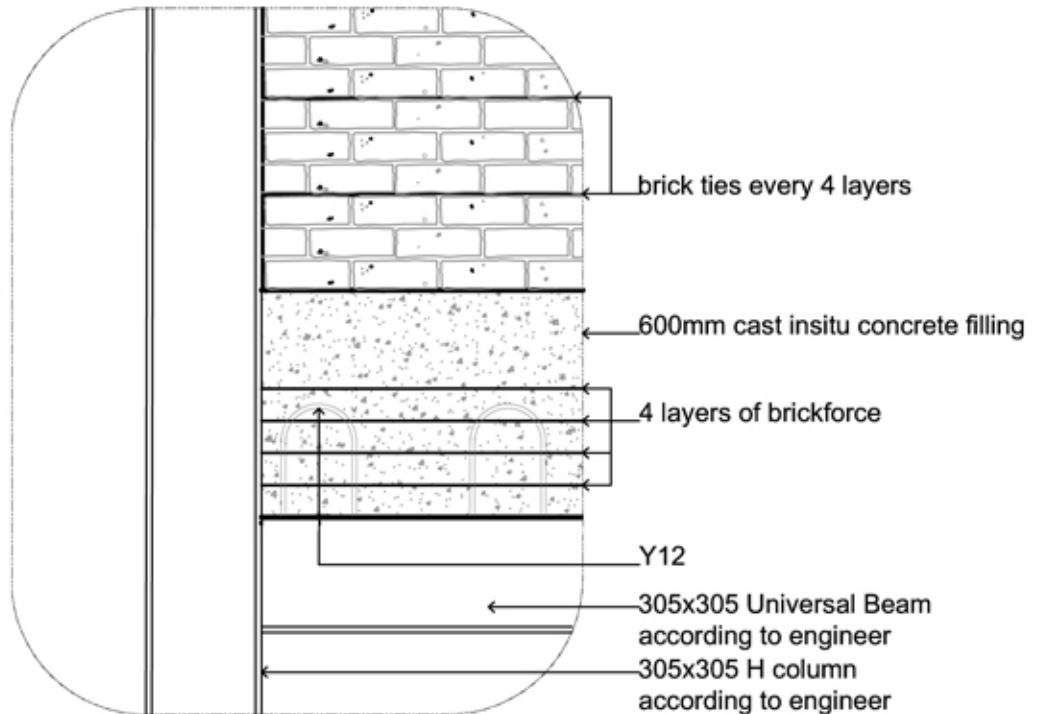
1:20
a a

NOTE:
inner skin
and top of
concrete
painted with
SIKA
siloxane
based
sealer and
pip mortar
left
out every
750mm to
allow
moisture
to
escape



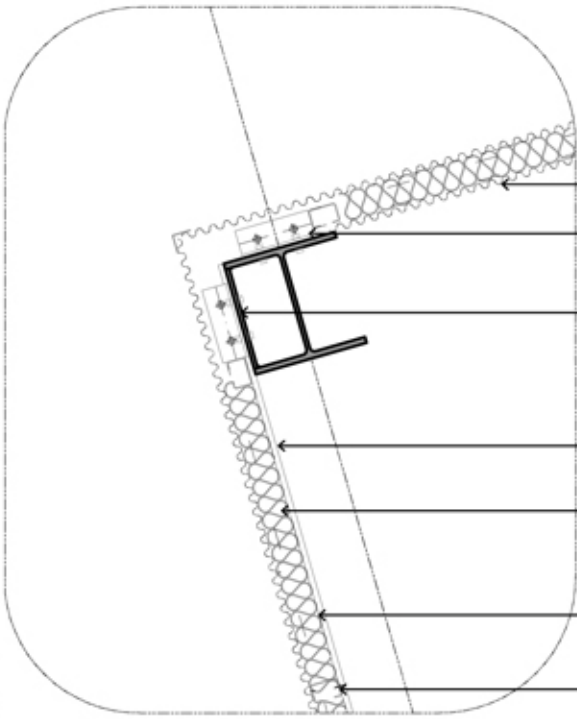
DETAIL 16

1:20
b b



DETAIL 17

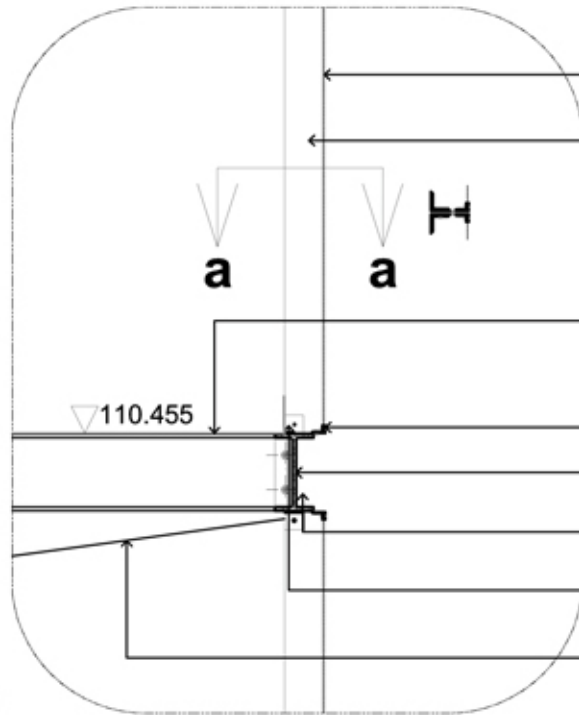
1:20



- 17,5mm corrugated steel
- purpose made 200x100x6mm angle cleat bolted to frame
- steel base plate welded to 305x305mm H column
- 15mm "Nutec" flat sheet treated with "B-Seal Eco paint"
- mineral insulation (80kg/m3)
- 125x75x20x3mm cold formed lip channel girth
- 125x75x20x3mm cold formed lip channel strut

DETAIL 18

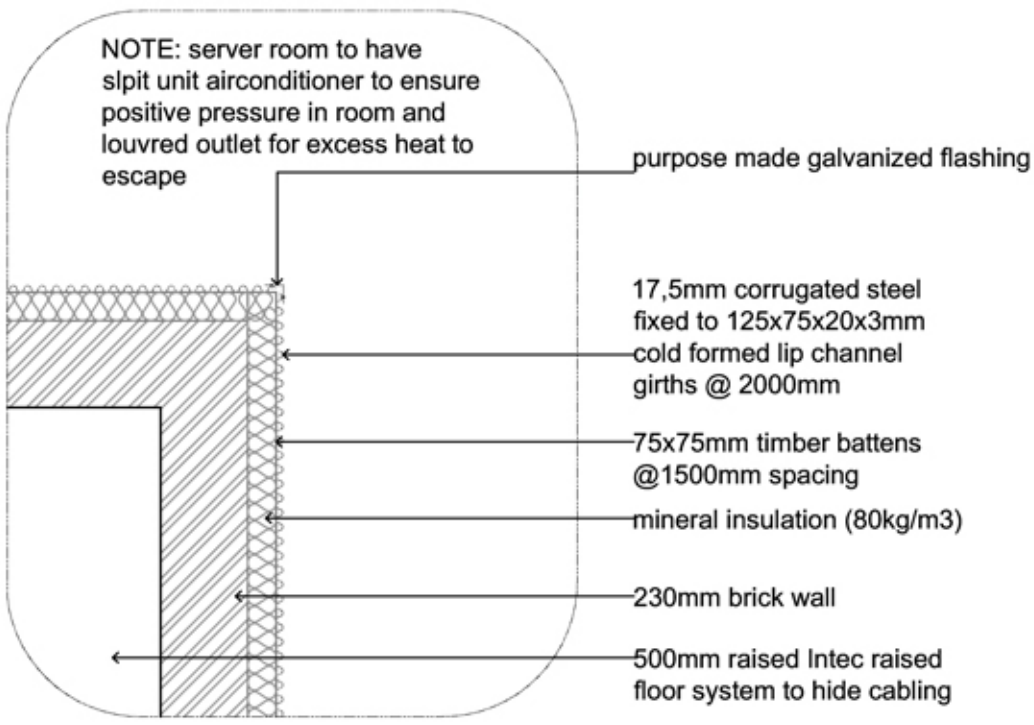
1:20



- AISI Type 316 stainless steel GKD metal fabric - Omega range
- 2835x100x10mm steel flat bar
- stainless steel 'vastrap' service walkway spanning 1000mm
- edge bent 100mm to form kick plate
- steel angle bar frame
- 200 IPE according to engineer
- high tension bolts with hexagonal ss nut cap according to engineer's specifications
- 50x50x5mm equal leg steel angles
- purpose made mild steel haunch support according to engineer's specifications

DETAIL 19

1:20



DETAIL 20

1:20

