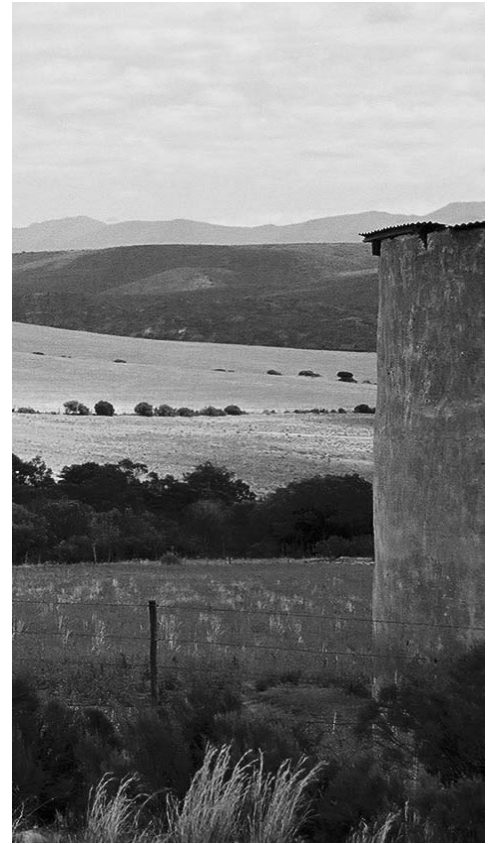


University of Pretoria etd - Griesel, G (2003)



University of Pretoria etd - Griesel, G (2003)

# DEVELOPMENT AND MANAGEMENT FRAMEWORK FOR THE GOURITS RIVER CATCHMENT

Submitted by: GERHARD GRIESEL

Student number: 2134097

Mentor: DR. GWEN BREEDLOVE

Study leader: DR. GWEN BREEDLOVE

UNIVERSITY OF PRETORIA

NOVEMBER 2003

Submitted as part of the requirements for the degree of  
Magister in Landscape Architecture (Professional), ML (Prof),  
in the Faculty of Engineering, Built Environment and Information Technology

to GOD all the honour

---

estie griesel  
my parents  
dr gwen breedlove  
the studio gang

## TABLE OF CONTENTS

PAGE

### SECTION A: GENERAL BACKGROUND

<b>1.</b>	<b>INTRODUCTION</b>	<b>1</b>
1.1	DEFINITION AND PURPOSE OF THE DEVELOPMENT	1
1.2	DOCUMENT STRUCTURE AND MANUAL	2
1.3	CLIENT PROFILE	2
1.4	INTERESTED AND AFFECTED PARTIES	3

### SECTION B: VISION, GOALS AND VALUES

<b>2</b>	<b>VISION AND GOAL STATEMENTS AND FUNDAMENTAL VALUES</b>	<b>6</b>
2.1	VISION	6
2.2	OVER-ARCHING GOALS	6
2.3	FUNDAMENTAL VALUES	7
2.4	INTERNATIONAL AGREEMENTS ON SUSTAINABLE DEVELOPMENT	8
2.4.1	AGENDA 21	8
2.4.2	NEW PARTNERSHIP FOR AFRICA'S DEVELOPMENT	9

### SECTION C: SITE DESCRIPTION AND PURPOSE OF THE DEVELOPMENT AND MANAGEMENT FRAMEWORK

<b>3</b>	<b>DESCRIPTION AND CONTEXT</b>	<b>10</b>
3.1	THE GOURITS RIVER CATCHMENT AREA	10
3.2	REGIONAL CONTEXT	11
3.3	ENVIRONMENTAL CONTEXT	12
3.3.1	CAPE FLORAL KINGDOM	12
3.3.2	REGIONS AND CENTRES OF PLANT ENDEMISM	14
3.3.3	THE CAPE PROJECT	14
3.3.4	CATCHMENT AREA	15
3.4	BIOPHYSICAL CHARACTERISTICS	15
3.4.1	GEOLOGY	16
3.4.1	CLIMATE	17
3.4.2	TOPOGRAPHY	19
3.4.3	HYDROLOGY	20
3.4.4	SOILS	22
3.4.5	VEGETATION	24
3.4.6	HABITAT	26
3.5	SOCIO-ECONOMIC CONTEXT	30
3.6	CURRENT LAND USE CONTEXT	33
3.7	LEGISLATIVE CONTEXT	34

## SECTION D: GUIDELINES AND PRINCIPLES FOR PLANNING, DESIGN AND MANAGEMENT

<b>4</b>	<b>PLANNING, DESIGN AND MANAGEMENT</b>	<b>39</b>
4.1	SUITABILITY ANALYSIS	39
4.1.1	APPROACHES TO SUITABILITY ANALYSIS	39
4.2	TOURISM	42
4.5.1	DESTINATION CHARACTERISTICS	44
4.2.1	DESTINATION CONCEPT	45
4.3	LANDSCAPE ECOLOGY	46
4.3.1	ECOLOGICAL LANDSCAPE DESIGN: A REGIONAL CONTEXT	46
4.3.2	LANDSCAPE ASSESSMENT	47
4.3.3	THE CONCEPT OF "LANDSCAPE RECYCLING"	47
4.3.4	SUSTAINABLE UTILISATION OF LANDSCAPE	48
4.3.5	DEVELOPING THE REGIONAL MODEL	48

## SECTION E: ENVIRONMENTAL COMPOSITE

<b>5.</b>	<b>ENVIRONMENTAL COMPOSITE</b>	<b>49</b>
5.1	ENVIRONMENTAL COMPOSITE PROCESS	49
5.2	SPATIAL ZONING PARAMETERS	51
5.3	SUITABILITY ZONING FOR THE GOURITS RIVER CATCHMENT AREA	52
5.3.1	SUITABILITY ZONES	52
5.3.1.1	CONSERVATIONAL SUITABILITY ZONES	52
5.3.1.2	AGRICULTURAL SUITABILITY ZONES	53
5.3.1.3	URBAN SUITABILITY ZONES	54
5.3.1.4	RECREATIONAL SUITABILITY ZONES	55
5.4	SUITABILITY ZONING FOR THE KANNALAND TOURISM NODE	56
5.4.1	CONSERVATIONAL SUITABILITY ZONE	56
5.4.2	AGRICULTURAL SUITABILITY ZONE	57
5.4.3	URBAN SUITABILITY ZONE	58
5.4.4	RECREATIONAL SUITABILITY ZONE	59
5.4.5	RECREATIONAL POTENTIAL	60
5.5	LAND-USE ZONES	61
5.5.1	CONSERVATION	64
5.5.2	CULTURE	65
5.5.3	RECREATION	66
5.6	SITE ANALYSIS	67
5.7	SENSITIVITY ANALYSIS	70

**SECTION F: SUSTAINABLE DEVELOPMENT BASELINE**

<b>5</b>	<b>SUSTAINABLE DEVELOPMENT BASELINE</b>	<b>74</b>
6.1	SOCIAL ISSUES	74
6.1.1	SOCIAL EQUITY	74
6.1.2	ACCESS TO PUBLIC FACILITIES	75
6.1.3	PARTICIPATION AND CONTROL	75
6.1.4	EDUCATION, SAFETY AND HEALTH	76
6.2	ECONOMIC ISSUES	77
6.2.1	LOCAL ECONOMY	77
6.3	ENVIRONMENTAL ISSUES	78
6.3.1	ENVIRONMENTAL INTEGRITY	78
6.3.2	WATER	78
6.3.3	PLANTS	79
6.3.4	RECYCLING AND REUSE	79
6.3.5	VEGETATION	80
6.3.6	LAND-USE	80
6.3.7	LAND COVER	81
6.3.8	SOILS	82
6.3.9	SLOPES	82
6.3.10	GEOLOGY	82

**SECTION G: DESIGN GUIDELINES**

<b>7</b>	<b>DESIGN GUIDELINES</b>	<b>82</b>
7.1	STORMWATER MANAGEMENT	82
7.1.1	CHARACTER	82
7.1.2	FORM	82
7.1.3	SCALE	82
7.1.4	CLIMATE RESPONSE	83
7.1.5	STRUCTURE	83
7.2	PARKING	84
7.2.1	CHARACTER	84
7.2.2	FORM	84
7.2.3	SCALE	84
7.2.4	CLIMATE RESPONSE	85
7.2.5	STRUCTURE	85
7.2.6	MATERIALS	86
7.2.7	COLOUR	86
7.2.8	SAFETY	86
7.3	PEDESTRIANWAYS	87
7.3.1	CHARACTER	87
7.3.2	FORM	87
7.3.3	SCALE	88
7.3.4	CLIMATE RESPONSE	88
7.3.5	STRUCTURE	89
7.3.6	MATERIALS	89
7.3.7	COLOUR	89
7.3.8	SAFETY	90
7.4	PLANTING	90

7.4.1	CHARACTER	90
7.4.2	FORM	91
7.4.3	SCALE	91
7.4.4	CLIMATE RESPONSE	92
7.4.5	COLOUR/TEXTURE	93
7.4.6	INSTALLATION	93
7.4.7	SAFETY	94
7.4.8	MAINTENANCE	94
7.5	BUILDING DESIGN GUIDELINES	94
7.5.1	CHARACTER	94
7.5.2	FORM	95
7.5.3	SCALE	95
7.5.4	CLIMATE RESPONSE	95
7.5.5	MATERIALS AND FINISHES	96
7.5.6	EXTERIOR COLOURS	96
7.5.7	SOLAR ACCESS	97
7.6	SITE FURNITURE	97
7.6.1	CHARACTER	97
7.6.2	FORM	98
7.6.3	SCALE	98
7.6.4	CLIMATE RESPONSE	98
7.6.5	STRUCTURE AND FUNCTIONAL ARRANGEMENTS	98
7.6.6	MATERIALS	101
7.6.7	COLOUR	101
7.7	LIGHTING	102
7.7.1	CHARACTER	102
7.7.2	FORM	102
7.7.3	SCALE	102
7.7.4	CLIMATE RESPONSE	102

7.7.5	MATERIALS	102
7.7.6	SAFETY	102
7.7.7	ECONOMY	102
7.8	SIGNAGE	103
7.8.1	CHARACTER	103
7.8.2	SCALE	103
7.8.3	FORM	104
7.8.4	CLIMATE RESPONSE	104
7.8.5	STRUCTURE AND FUNCTIONAL ARRANGEMENTS	104
7.8.6	COLOUR	105
7.8.7	SAFETY	105

## SECTION H: DESIGN PHILOSOPHY

8.	DESIGN PHILOSOPHY	106
8.1	THE MAN VERSUS NATURE RELATIONSHIP	106
8.2	DESIGN AS A STATEMENT OF HUMAN AND ENVIRONMENTAL RELATIONSHIPS	107
8.3	ELEMENTS AND PRINCIPLES OF THE DESIGN	108
8.3.1	DESIGN ELEMENTS	108
8.3.2	DESIGN PRINCIPLES	108

**SECTION I: PLANS**

<b>9 PLANS</b>	<b>110</b>
9.1 ZONE 2: RECREATIONAL PARK	110
9.2 ZONE 3: HOLIDAY RESORT	111
9.3 ZONE 4: ADVENTURE CAMP	112

**SECTION J: ADDENDUMS**

8.1 Addendum A	BIO ATLAS SPECIES REPORT	113
8.2 Addendum B	MATRIX FOR SUITABILITY REQUIREMENTS	114
8.3 Addendum C	RISK ASSESSMENT	115
8.4 Addendum D	PROJECT ANALYSIS	116

**SECTION K: REFERRED WORKS** **117**

**LIST OF TABLES**

	<u>Page</u>
Table 1: Structure of the development and management framework	2
Table 2: Primary environmental aspects	12
Table 3: Key population statistics	30
Table 4: Relevant legislation	35
Table 5: Classification of travel activities	42
Table 6: Classification of attractions	43
Table 7: The four primary Spatial Zones	51
Table 8: Zoning of Kannaland Tourism Node	62
Table 9: Sensitivity analysis area descriptions	70
Table 10: Symbols of Risk Analysis	115
Table 11: Risk Analysis	115



## LIST OF FIGURES

	<u>Page</u>		
Figure 1:	10	Figure 20:	40
Figure 2:	11	Figure 21:	45
Figure 3:	12	Figure 22:	52
Figure 4:	13	Figure 23:	53
Figure 5:	14	Figure 24:	54
Figure 6:	16	Figure 25:	55
Figure 7:	17	Figure 26:	56
Figure 8:	19	Figure 27:	57
Figure 9:	20	Figure 28:	58
Figure 10:	21	Figure 29:	59
Figure 11:	22	Figure 30:	60
Figure 12:	23	Figure 31:	61
Figure 13:	24	Figure 32:	64
Figure 14:	26	Figure 33:	65
Figure 15:	27	Figure 34:	66
Figure 16:	28		
Figure 17:	29		
Figure 18:	33		
Figure 19:	33		

Figure 35: Site Analysis – Zone 2	67	Figure 48: Bus Parking – recommended dimensions	87
Figure 36: Site Analysis – Zone 3	68	Figure 49: Stormwater management – use pervious materials to reduce runoff	87
Figure 37: Site Analysis – Zone 4	69	Figure 50: Pedestrianways – structured to buildings	88
Figure 38: Sensitivity Analysis – Zone 2	71	Figure 51: Pedestrianways – curvilinear form to natural areas	88
Figure 39: Sensitivity Analysis – Zone 3	72	Figure 52: Pedestrianways – recommended dimensions	89
Figure 40: Sensitivity Analysis – Zone 4	73	Figure 53: Pedestrianways – climate response	89
Figure 41: Stormwater management- reduce velocity	84	Figure 54: Pedestrianways – recommended slopes	90
Figure 42: Stormwater management – maximum slopes for planted areas	84	Figure 55: Pedestrianways – change surface materials	90
Figure 43: Stormwater management – preferred slopes for drainage swales	84	Figure 56: Pedestrianways – safety	91
Figure 44: Stormwater – Large expanses of Unrelieved pavement create stormwater runoff problems and poor comfort conditions for pedestrians.	85	Figure 57: Planting – form suited to surrounding areas	91
Figure 45: These problems can be lessened through landscaped planting areas, which include shade trees	85	Figure 58: Planting – creating outdoor rooms: canopies	92
Figure 46: In an optimum parking arrangement there should be no more than 10 cars in any continuous bay	86	Figure 59: Planting – creating outdoor rooms: walls	92
Figure 47: Parking –recommended dimensions	86	Figure 60: Planting – creating outdoor rooms: floors	92
		Figure 61: Planting – climate response	93
		Figure 62: Planting – screening for privacy yet visually accessible	93

Figure 63: Planting – visual barrier between buildings	94	Figure 84: Signage – typical eye levels	104
Figure 64: Planting – visual barrier between activities	94	Figure 85: Signage – entrance sign	105
Figure 65: Planting – Safety installation	95	Figure 86: Signage – trail-blazer	105
Figure 66: Planting – visual impact	95	Figure 87: Environmental Relationships – Zone 3	108
Figure 67: Buildings – form and topography	95	Figure 88: Environmental Relationships – Zone 4	108
Figure 68: Buildings – roof pitch	96	Figure 89: Environmental Relationships – Zone 2	109
Figure 69: Buildings – solar access for building spacing	97		
Figure 70: Buildings – materials: wood	97		
Figure 71: Buildings – materials: rock	98		
Figure 72: Buildings – Permanent tent structure	98		
Figure 73: Site Furniture – informal seating	99		
Figure 74: Site furniture – formal seating	99		
Figure 75: Site furniture – seat dimensions	100		
Figure 76: Site furniture – litterbins	100		
Figure 77: Site furniture – permanent planters	100		
Figure 78: Site furniture – formal bollards	101		
Figure 79: Site furniture – informal bollards/seating	101		
Figure 80: Site furniture – tree grilles	101		
Figure 81: Site furniture – bus shelters	102		
Figure 82: Site furniture – drinking fountain	102		
Figure 83: Lighting – recommended lights	103		

## LIST OF DIAGRAMS

	<u>Page</u>
Diagram 1: Process development and relationships	50