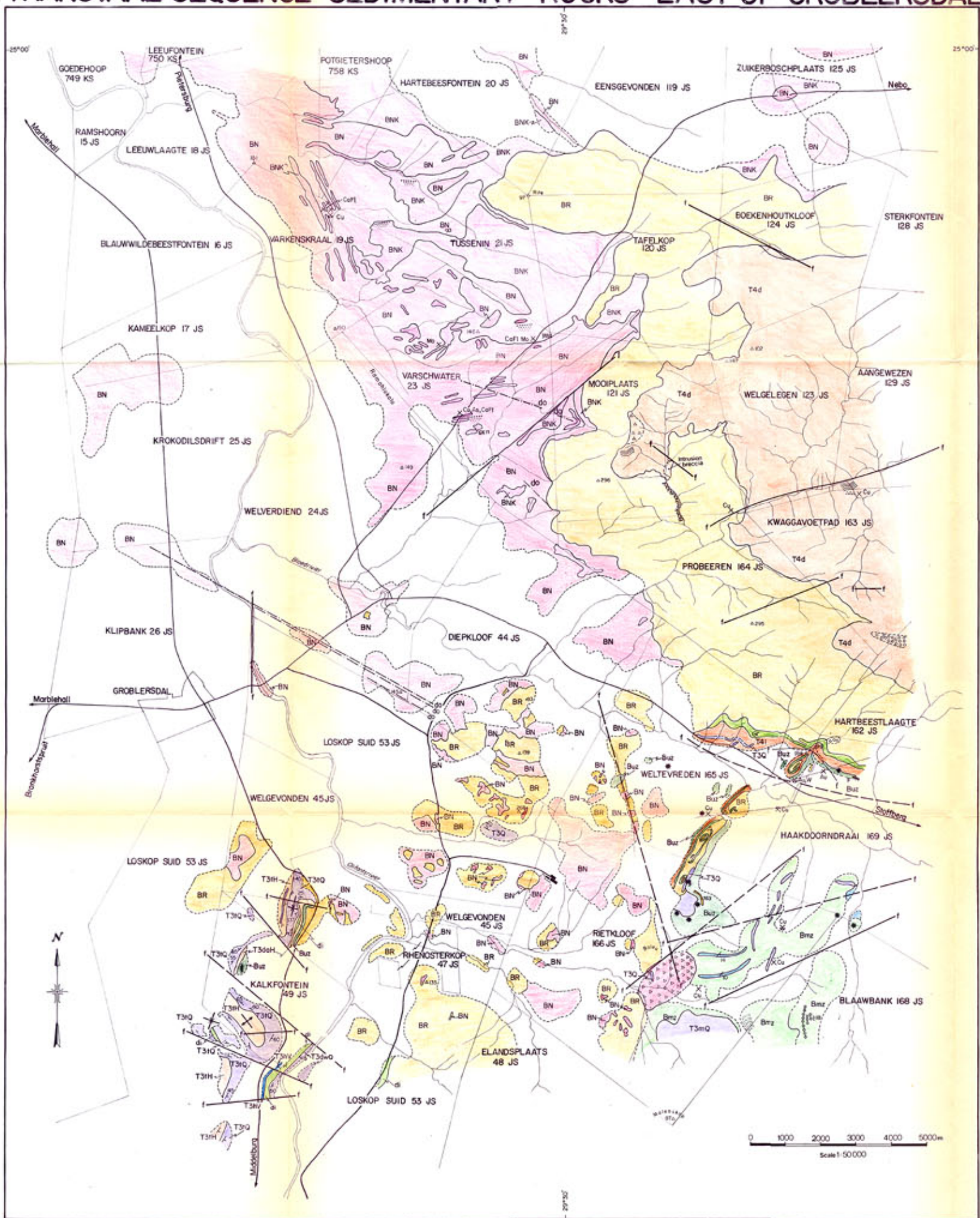


THE GEOLOGY OF THE BUSHVELD COMPLEX AND METAMORPHOSSED TRANSCAAL SEQUENCE SEDIMENTARY ROCKS EAST OF GROBLERSDAL

University of Pretoria etd - Kleemann G J 1985



- | | | | | | |
|--|--|--------------------------|---------------------------|----------------------|----------------------------|
| | ALLUVIUM, SOIL COVER AND CULTIVATED LAND | | | | |
| | DOLERITE | | | | |
| | GRANITE AND INTRUSION BRECCIA | } NEBO GRANITE | } LEBOWA GRANITE SUITE | } BUSHVELD COMPLEX | |
| | KLIPKLOOF GRANITE | | | | |
| | NEBO GRANITE | | | | |
| | STAVOREN GRANOPHYRE | | | | } RASHOOP GRANOPHYRE SUITE |
| | GRANODIORITE | | | | |
| | DIORITE | } UPPER ZONE | } RUSTEBURG LAYERED SUITE | | |
| | MAGNETITE GABBRO | | | | |
| | GABBRO AND NORITE | | | | |
| | ANORTHOSITE | } MAIN ZONE | | | |
| | METABASITE | | | | |
| | FELSITE (100% flowbanded, 50% amygdaloidal, 50% agglomerate) | } SELONS RIVER FORMATION | } ROOIBERG GROUP (T4) | | |
| | METAFELSITE | | | | |
| | QUARTZITE - UNDIFFERENTIATED | | | } TRANSVAAL SEQUENCE | |
| | QUARTZITE | } MAGALIESBERG FORMATION | } PRETORIA GROUP (T3) | | |
| | QUARTZITE | | | | |
| | ANDESITE LAVA | | | | |
| | QUARTZITE | | | | |
| | HORNFELS WITH INTERCALATED QUARTZITE | | | | |
| | NOULES IN GRANITE | | | | |
| | MAGNETITE PLUG | | | | |
| | FRACTURE | | | | |
| | FAULT | | | | |
| | DIP AND STRIKE OF STRATA | | | | |
| | SYNCLINAL STRUCTURE | | | | |
| | ANTICLINAL STRUCTURE | | | | |
| | ABANDONED MINES | | | | |
| | PROSPECT | | | | |
| | SOLID AND INFERRED GEOLOGICAL CONTACT | | | | |
| | MAIN ROAD | | | | |
| | HOMESTEAD | | | | |
| | RIVERS AND STREAMS | | | | |
| | TRIGONOMETRICAL BEACON | | | | |
| | FARM BOUNDARIES | | | | |