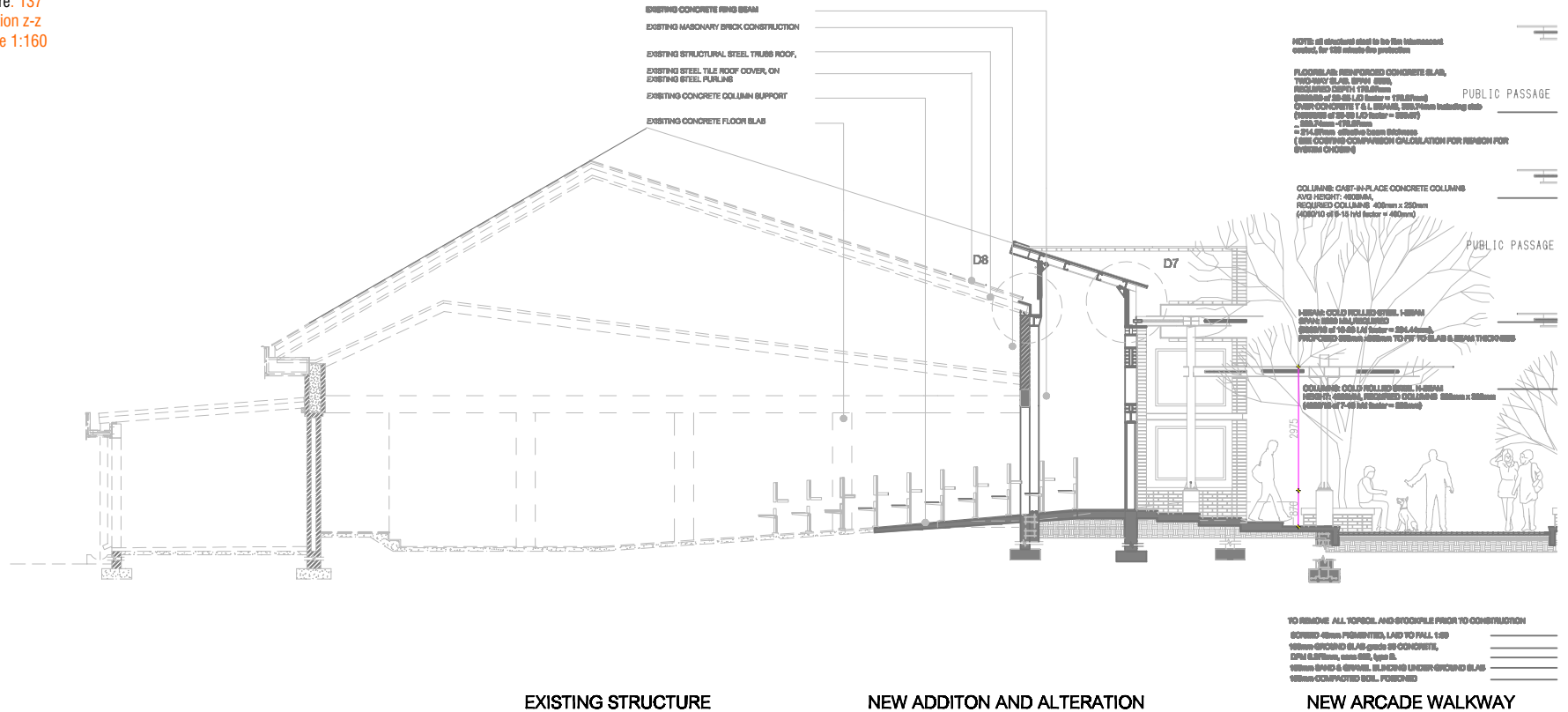


DATE: 16.09.2008	SCALE: 1:5000 @ A4
DRAWN BY: Juko Ntse	CHECKED BY:
APPROVED BY:	CHECKED DATE:
SITE DESCRIPTION University of Pretoria Hans Strijdom, ERF: 29062 Mamelodi	
DRAWING TITLE: <b>COMMUNITY ENGAGEMENT FACILITATOR</b> SECTION Z-Z	
PROJECT No. 1_Master Architecture dissertation 2008_ University of Pretoria	
DRAWING No. MArch UP_PLAN_001_P01A_ 2008	REV. C

SECTION Z-Z SCALE 1:160

8.6\_

Figure. 137  
Section z-z  
Scale 1:160



NOT ROLLED C-SECTION CLOSER OVER ROOF SHEETING  
PUNCHED AND GALVANIZED, TO ACT  
AS GUTTER, POWER HOSE LINES WIND-UP BACK TO PWT  
C-SECTION AND ASSESS TO MEET RELEVANT STRUCTURAL REQUIREMENT

ROOF SHEETING: 7 corrugated box rib profile  
steeled, with cast in place, being 150mm x 20  
global roofing solution, based to parin

NOT ROLLED STEEL, I-BEAM 400mm  
200mm STEEL BRACE

SLAB BEAMS: NEW CUPPED GALVANIZED MILD STEEL,  
PLATE, WELDED (see 200-200)

COLD FORMED STEEL PURLIN 150mm @  
200mm c/c, FINISH TO STEEL  
GLASS.

I-BEAM (400mm x 80 = 150mm of L20-80-80 factor)

NOT ROLLED STRUCTURAL T BEAM, WELDED  
BOLTED TO UNIFORM OF 150mm  
x 150, grade 4.8

100mm ALUMINUM ANODIZED FRAME  
POWER COATED TO APPROXIMATE COLUMN DOUBLE  
DOOR AND WINDOW HEAVY, ALL TO COMPLY WITH  
SBS 1091.

PROVIDE 10mm SAND, 150mm  
CONCRETE, 150mm TP, cast-in,  
FINISH TO REINFORCED CAST  
CONCRETE MILD STEEL FRAME

STEEL PULVINATED SHEETING  
NEW COLUMN, cast-in,  
PURLIN WELDED  
NEW ROLLED STRUCTURAL T  
BOLTED TO COLD FORMED CUPPING SUPPORT  
BOLTED TO STEEL I-BEAM  
TO COMPLY TO SBS 1091 type II.

