



Project 1

Website



Parkieland



Agtergrond

Visie en Missie

**Addisionele
Inligting**

Personeel

**Samewerking
met Laerskool**

Agtergrond



Parkieland het sy deure op 16 Januarie 2001, in 'n ultramoderne, spesiaal ontwerpte gebou, geopen.

Die skool bestaan uit 4 klaskamers, ' mediasentrum en 'n ruim speelarea.



Die heel nuutste toerusting is aangekoop om tred te hou met die uitdagings wat die 21ste eeu bied.

[Hoofblad Menlopark](#)

[Hoofblad Parkieland](#)

[Agtergrond](#)

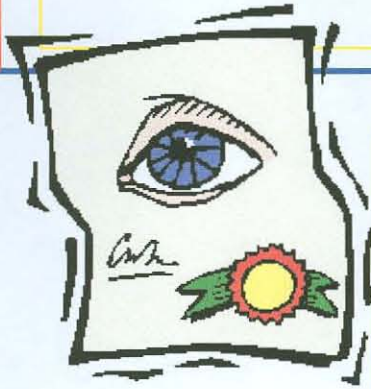
[Visie en Missie](#)

[Addisionele Inligting](#)

[Personeel](#)

[Samewerking met Laerskool](#)

Visie en Missie



Die missie van die skool is die verskaffing van voortreflike en relevante onderwys. Dit beteken dat die visie van die skool "Hier word ek gelukkig groot" in al sy betekenismoonlikhede verwesenlik word.

Die doelstellings van die skool is om te streef na die handhawing, beskerming en bevordering van:

- Vryheid van taal en assosiasie
- Hoë standaard van onderrig
- Christelike waardes
- Opvoeding van kleuters tot skoolgereedheid
- Vorming van gebalanseerde, selfstandige en gelukkige kleuters

[Hoofblad
Menlopark](#)

[Hoofblad
Parkieland](#)

[Agtergrond](#)

[Visie en
Missie](#)

[Addisionele
Inligting](#)

[Personeel](#)

[Samewerking
met
Laerskool](#)

Addisionele Inligting



Dagprogram



Ligging



Kwartaalprogram



Foie



Skoolure

[Hoofblad
Menlopark](#)

[Hoofblad
Parkieland](#)

[Agtergrond](#)

[Visie en
Missie](#)

[Addisionele
Inligting](#)

[Personeel](#)

[Samewerking
met
Laerskool](#)

Dagprogram

TYD	AKTIWITEIT	OMSKRYWING
07:00 tot 08:00	Aankoms en konstruksie spel	
08:00 tot 08:30	Buitespel	-Sandput, waterbak, fantasie-areas en klimapparaat
08:30 tot 09:00	Môre sê: - gewyde sang - weerkaart - Leier/helpers - Temabespreking of - Persepsie of - Taalontwikkeling of - 'n Bybelverhaal	- Wissel elke dag - 'n Nuwe tema word elke week bespreek - Hoofsaaklik ouditief en visueel - 'n Nuwe rymptjie word elke week aangeleer - wat tot elke kleuter spreek
09:00 tot 10:00	Kuns en vryspel - Nuwe vaardighede - Kreatiwiteit	- word daagliks aangeleer en word progressief moeiliker - speel die grootste rol
10:00 tot 10:15	Opruim- en toiletroetine	
10:15 tot 10:45	Verversings	Word aan tafel geniet
10:45 tot 11:00	Musiek en beweging	Speel 'n belangrike rol
11:00 tot 12:00	Gerigte buitespel	
12:00 tot 12:10	Handewas	
12:10 tot 12:30	Taalontwikkeling	Storie en poppespel
12:30 tot 13:00	Rustyd/opvoedkundige spel	Speelmateriaal word benut
13:00 tot 13:30	Middagete of vertrek	Goed gebalanseerde etes word verskaf

Hoofblad
Menlopark

Hoofblad
Parkieland

Agtergrond

Visie en
Missie

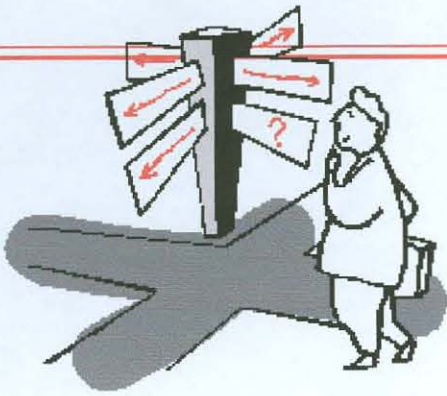
Addisionele
Inligting

Personeel

Samewerking
met
Laerskool



Ligging



Adres:	Tiendestraat Menlopark
Telefoon:	(012) 460 7201
Faks:	(012) 460 2304
E-pos:	rraath@lmp.gp.school.za
Webadres:	http://www.lmp.co.za

[Hoofblad
Menlopark](#)

[Hoofblad
Parkieland](#)

[Agtergrond](#)

[Visie en
Missie](#)

[Addisionele
Inligting](#)

[Personeel](#)

[Samewerking
met
Laerskool](#)

Kwartaalprogram



Datum	Tema	Opvoedkundige Program/funksie	Benodigdhede vir tema	Benodigdhede vir kuns
September				
09 -13	Melk		Suiwelprodukte	
16 -20	Tande		Gesonde eetgoed, tandepaste	Tandepasta, ou tandeborsels
25 - 27	Vuur			Gebrande vuurhoutjies en boksies, houtskool
Oktober				
30 - 4	Kommunikasie		Kommunikasiemiddels	Ou telefoonboek
7 - 11	Lente		Blomme	Blomme
14 - 18	Bye		Heuning, byekorf	Was
21- 25	Goggas	24 Lenteloop	Goggas, boeke	
28 - 1	Reptiele	29 Evaluerings-verslae uit	Boeke oor reptiele	Sykouse
November				
4 - 8	Dinosaurusse		Boeke oor tema	
11 - 15	Paddas		Paddas, paddavissies	
18-22	Laerskool / vrugte	Graad 0 dra skooldrag	HB potlood	
25 - 29	Kersfees		Kersversierings	
Desember				
2 - 3	Afsluiting			

[Hoofblad - Menlopark](#)

[Hoofblad - Parkieland](#)

[Agtergrond](#)

[Visie en Missie](#)

[Addisionele Inligting](#)

[Personeel](#)

[Samewerking met Laerskool](#)



Foie



Ouers betaal slegs vir 10 maande

Soggens alleenlik (07:00 tot 13:00)	R550,00 per maand
Voldag (07:00 tot 17:30)	R700,00 per maand
Vakansiesorg	R30,00 per dag (afhangende van aantal belangstellendes)

[Hoofblad
Menlopark](#)

[Hoofblad
Parkieland](#)

[Agtergrond](#)

[Visie en
Missie](#)

[Addisionele
Inligting](#)

[Personeel](#)

[Samewerking
met
Laerskool](#)

Skoolure

**Aankoms: 07:00 tot
08:30**

Vertrektye:



11:30 tot 13:30

Nasorgsentrum:

13:00 tot 17:30

**(Middagetes word by
nasorgsentrum
voorsien)**

[Hoofblad
Menlopark](#)

[Hoofblad
Parkieland](#)

[Agtergrond](#)

[Visie en
Missie](#)

[Addisionele
Inligting](#)

[Personeel](#)

[Samewerking
met
Laerskool](#)

Personeel

Die vier onderwyseresse van Parkieland is goed gekwalifiseerde, toewyde onderwysers, wat die kleuters ferm, liefdevol en empatiek hanteer.

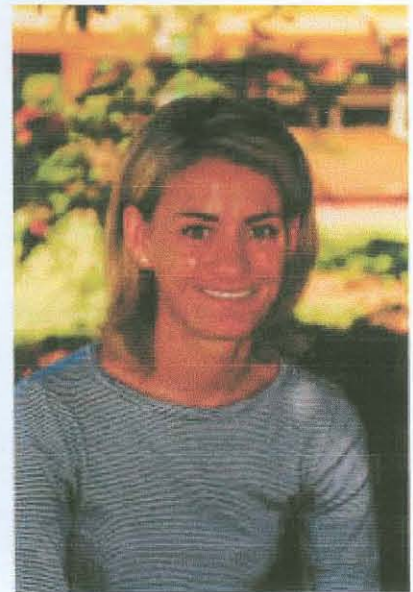
Kliek asseblief op een van die name om meer aangaande 'n betrokke personeellid uit te vind.



[Ria Raath \(hoof\)](#)



[Jacqueline Liebenberg](#)



[Antoinette Marx](#)

[Hoofblad
Menlopark](#)

[Hoofblad
Parkieland](#)

[Agtergrond](#)

[Visie en
Missie](#)

[Addisionele
Inligting](#)

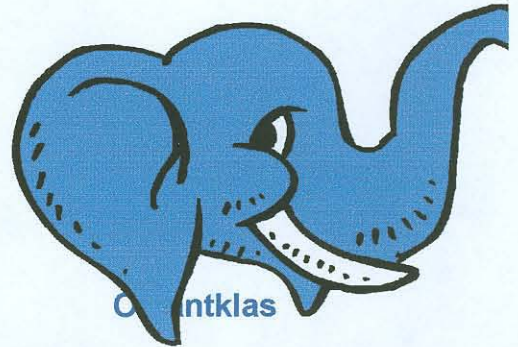
[Personeel](#)

[Samewerking
met
Laerskool](#)

Ria Raath - hoof van Parkieland



Ria Raath



Ria Raath is die hoof van Parkieland en verantwoordelik vir die Graad 0-groep. Sy hou al vir langer as 26 jaar skool, waarvan sy al 18 jaar hoof van skole was.

Sy was verantwoordelik vir die stigting van die volgende Pre-Primêre skole:

- TOD Pre-Primêre skool Randburg (1974)
- TOD Pre-Primêre skool Suikerbossie in Krugersdorp (1976)
- Departement Pos- en Telekommunikasie se eerste Pre-Primêre skool (1985)
- Parkieland (2001)

Ria stel baie belang in die kleuter se aanvangsjaar en is steeds besig om kennis oor dié vakgebied in te win. Sy het bo en behalwe haar onderwyskwalifikasie, ook sertifikate in Brain Gym en Uitkomsgebaseerde Onderwys.

[Hoofblad
Menlopark](#)

[Hoofblad
Parkieland](#)

[Agtergrond](#)

[Visie en
Missie](#)

[Addisionele
Inligting](#)

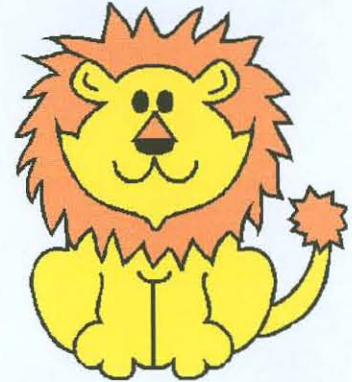
[Personeel](#)

[Samewerking
met
Laerskool](#)

Jacqueline Liebenberg



Jacqueline Liebenberg



Leeutjieklas

Jacqueline het 'n HOD Junior en Pre-Primêre Onderwysdiploma aan die Onderwyskollege van Pretoria verwerf.

Sy het haar onderwysloopbaan as Gr 1-onderwyseres begin. Na vier jaar het sy na kleuteronderwys oorgeskakel en dit is tans haar derde jaar as kleuterskoolonderwyseres. Sy het bo en behalwe haar onderwyskwalifikasies, verskeie kursusse asook 'n kursus in uitkomsgebaseerde onderwys voltooi.

As kleuteronderwyseres doen Jacqueline ook waardevolle ondervinding met haar eie tweelingseuns op.

Sy geniet dit om met 'n boek te ontspan of om aan sport deel te neem.

Niks kan egter vergelyk word met die pret wat sy uit die kleuters se spontaniteit verkry.

[Hoofblad
Menlopark](#)

[Hoofblad
Parkieland](#)

[Agtergrond](#)

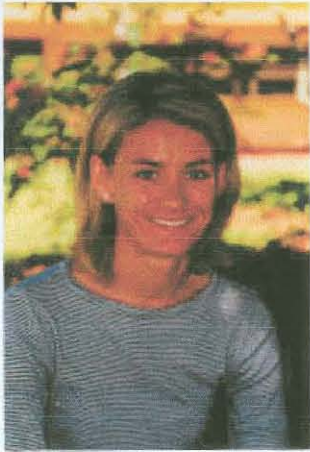
[Visie en
Missie](#)

[Addisionele
Inligting](#)

[Personeel](#)

[Samewerking
met
Laerskool](#)

Antoinette Marx



Antoinette Marx



Tiertjeklas

Antoinette Marx is in 1975 in Pretoria gebore. Sy het haar skoolloopbaan in 1993 aan die Hoërskool Menlopark voltooi. Sy het 'n B Prim Ed (Pre-Primêr) asook 'n B.Ed (opvoedkundige sielkunde) aan die Universiteit van Pretoria voltooi. Sy het benewens haar onderwyskwalifikasies ook verskeie ander kursusse voltooi, waaronder een in kreatiwiteit en kreatiewe denke asook 'n opleidingskursus in Uitkomsgebaseerde Onderwys.

In 1998 het sy 'n pos by Pierneef Pre-Primêre Kleuterskool aanvaar en het in 2001 die pos by Parkieland aanvaar.

Antoinette geniet alles wat skeppend is: tuinmaak, skilder, binnenshuisversiering, pottebakkerij en kuns.

Sy is baie lief vir kinders en geniet die daaglikse betrokkenheid by die kleuters.

Henriëtte Botes



Henriëtte Botes



Beertjieklas

Henriëtte Botes het haar graad in Kleuteronderwys (B.Prim.Ed.pre-primêr) in 2001 aan die Universiteit van Pretoria, behaal.

Henriëtte het in 1995 aan die Hoërskool Dr E G Jansen in Boksburg gematrikuleer waar sy onderhoofdogter van kultuur was. Na matriek het sy twee jaar lank Diensjaar vir Christus saam met C-kruis gedoen. Gedurende hierdie tydperk het sy onder andere ondervinding in drama, sang, mimiek en kinderteater opgedoen.

Henriëtte sing tans in 'n dames a-capella groep genaamd Verbal Bath en is deel van die mimiek groep by OAC. Sy is ook betrokke by PEN-kinderbediening in die middestad wat die Evangelie aan die stadskinders bring. Sy koördineer tans die Berea-area.

Henriëtte is benewens al bogenoemde ook lief vir muurbal, gym, fietsry, lees en wil ook graag eendag die hoofrol in 'n musiekblyspel vertolk.

[Hoofblad
Menlopark](#)

[Hoofblad
Parkieland](#)

[Agtergrond](#)

[Visie en
Missie](#)

[Addisionele
Inligting](#)

[Personeel](#)

[Samewerking
met
Laerskool](#)



amewerking met Laerskool Menlopark

Onderrig in die ontvangsjaar is nou 'n werklikheid by Laerskool Menlopark!

Nowe samewerking vind plaas tussen Laerskool Menlopark se grondslagfase en Parkieland.

Aandag word reeds in Graad 0 aan die vroeë identifisering van besondere vermoëns of moontlike probleemareas gegee.

Al die fasiliteite van die Laerskool is tot die kleuters se beskikking:

- Rekenaarsentrum
- Atletiekbaan, paviljoen, saal en swembad
- Deelname aan:
 - Bulletjie-rugby
 - mini-krieket
 - massa-atletiek
 - swem
 - skaak

[Hoofblad
Menlopark](#)

[Hoofblad
Parkieland](#)

[Agtergrond](#)

[Visie en
Missie](#)

[Addisionele
Inligting](#)

[Personeel](#)

[Samewerking
met
Laerskool](#)



Project 2

Presentation to governing body
with regard to design,
Implementation, management
and integration into the
curriculum of a computer center

'n Uitdaging vir die toekoms!

'These instruments are' not uncommon, but are but little resorted to by the teacher. The teacher knows almost as little how to use it as the pupils.' (source unknown)

Hierdie aanhaling is in die 1840's van die swartbord gesê!

Be-oogde rekenaarsentrum vir Laerskool Menlopark

Rekenaarsentrum vir Laerskool Menlopark

Leerlingtal : 912

Aantal leerlinge per klas : ±30

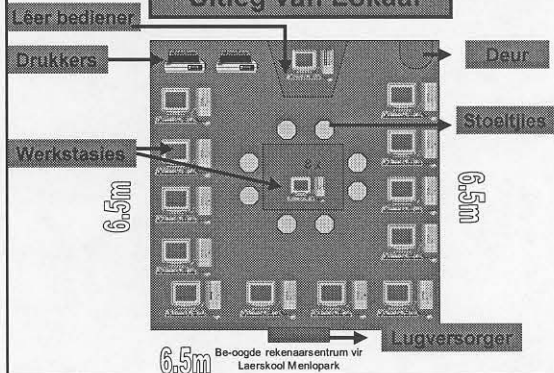
Be-oogde rekenaarsentrum vir Laerskool Menlopark

Benodighede

- Lokaal
- Hardware/Apparaatuur
- Netwerk
- Sagteware/Programmatuur
- Lugversorging
- Personeel

Be-oogde rekenaarsentrum vir Laerskool Menlopark

Uitleg van Lokaal



Be-oogde rekenaarsentrum vir Laerskool Menlopark

Hardware

20 x rekenaars (werkstasies)

Intel® Celeron™ Processor 633Mhz • 10GB HDD • 64MB RAM • 52 X CD ROM drive • 56K Fax modem • 16 BIT 3D sound card & speakers • MS PS2 mouse • MS Windows Millenium Edition • Ethernet Card

2 x drukkers

HP Deskjet 959C • Up to 11 ppm • 2400 x 1200 dpi mode on photo paper • Parallel and USB support • 4MB ram

1 x Lêer Bediener

Compaq Presario 5WV 255 • AMD® Duron™ Processor 750Mhz • 30GB HDD • 64MB RAM • 8 x DVD and 4 x CD writer drives • 56K Fax modem • Nvidia Vanta LT 8MB 2 x AGP Video Card • MS Windows Millenium Edition

Be-oogde rekenaarsentrum vir Laerskool Menlopark

Ander (opsionele) benodighede

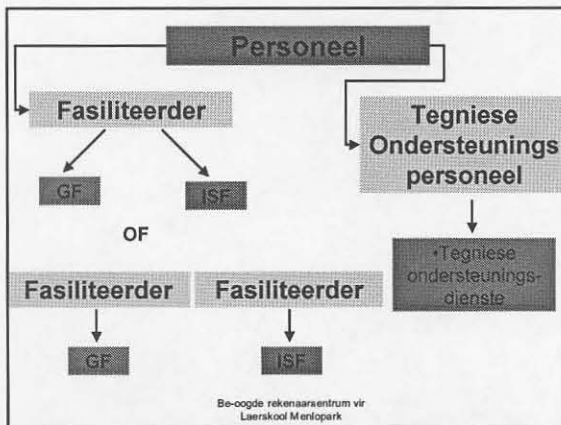
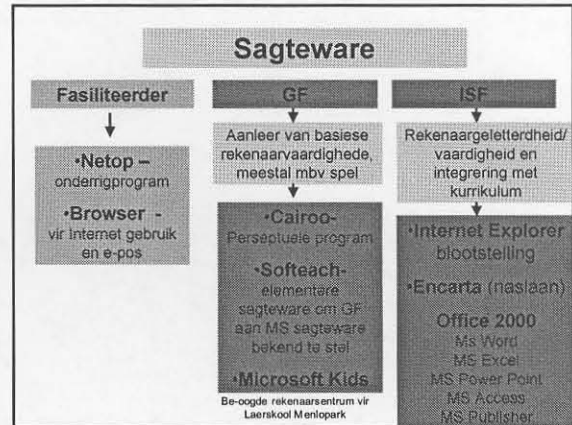
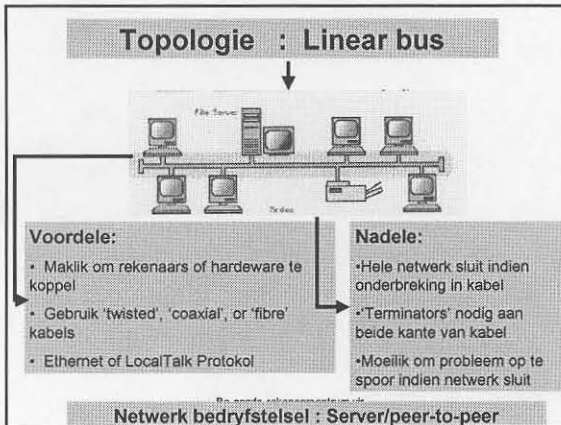
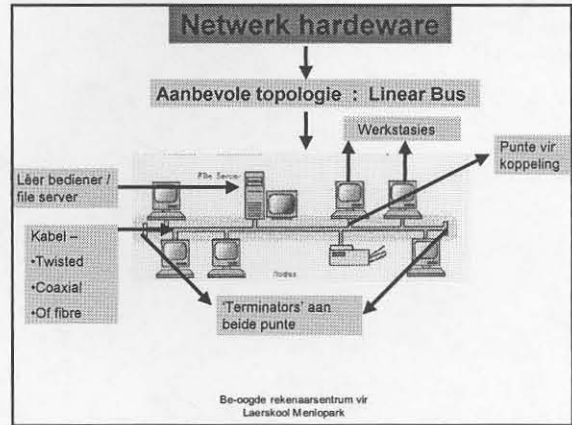
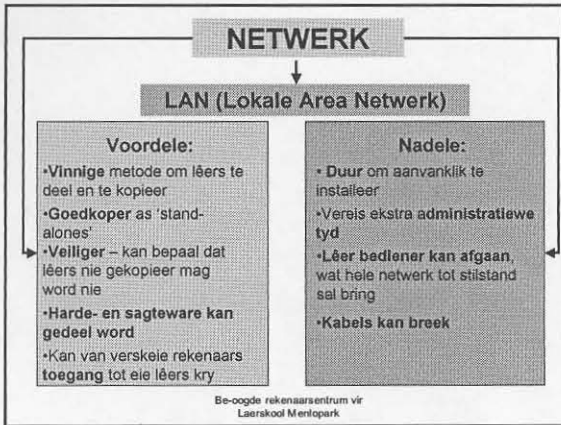
Lugversorger

• Om temperatuur in rekenaarlokaal te reguleer

Kragbystandseenheid (UPS)

• Uninterruptible Power Supply • verhoed dat rekenaars afskakel tydens 'n kragonderbreking • sorg dat kragtoevoer na rekenaars nie gedurig fluktureer nie

Be-oogde rekenaarsentrum vir Laerskool Menlopark



Beraamde Koste

1.	20 x Rekenaars (werkstasies)	± R120 000,00
2.	1 x Server	± R 11 000,00
3.	2 x Drukkers	± R 4 000,00
4.	Lugversorging	± R 5 000,00
5.	UPS	± R 750,00
6.	Installering van Netwerk	± R 15 000,00
7.	Sagteware	± R 50 000,00
TOTAAL : Aanvanklike aankoopskoste		± R205 750,00

Be-ogde rekenaarsentrum vir Laerskool Meritpark

Salarisse

- | | | |
|----|--------------------|--------------------|
| 1. | Fasiliteerder | ± R 95 000,00 p.j. |
| 2. | Tegniese Personeel | ± R 15 000,00 p.j. |

Totale salariskoste per jaar ± R110 000,00

Be-oogde rekenaarsentrum vir
Laerskool Menlopark

Twyfel u nog?

Lees dan die volgende anonieme aanhaling.

**Teen die jaar 2010 sal niemand,
wat nie rekenaargeletterd is nie,
enige betrekking suksesvol kan
beklee nie!**

Dit is dus nou die aangewese tyd om ons kinders vir die toekoms
voor te berei!

Be-oogde rekenaarsentrum vir
Laerskool Menlopark



Salarisse		
1.	Fasiliteerder	± R 95 000,00 p.j.
2.	Tegniese Personeel	± R 15 000,00 p.j.
Totale salariskoste per jaar		± R110 000,00

Be-ogde rekenaarcentrum vir
Laerskool Menlopark

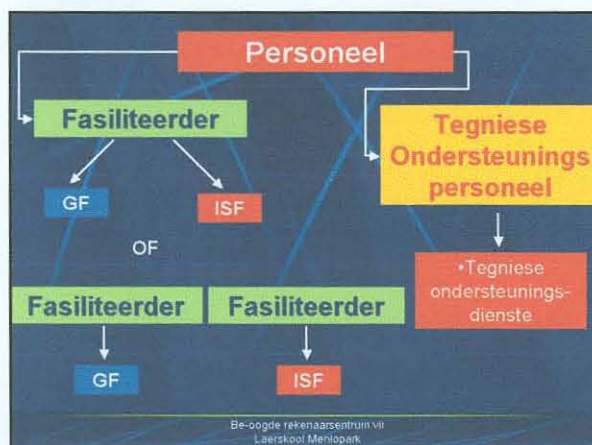
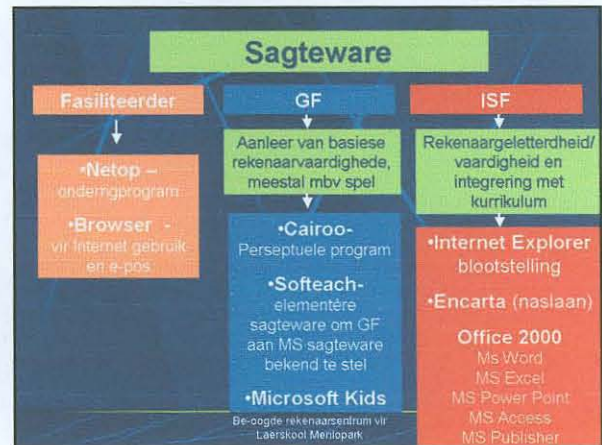
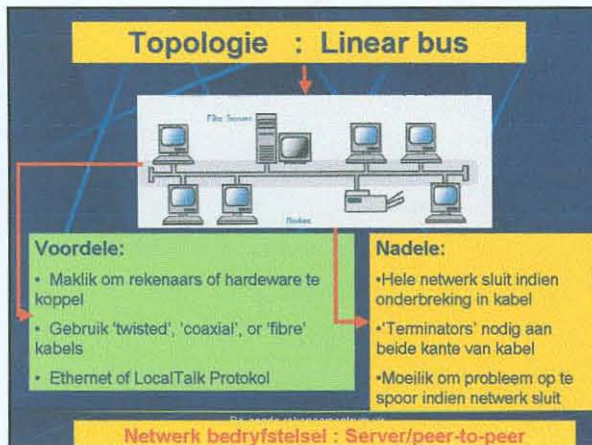
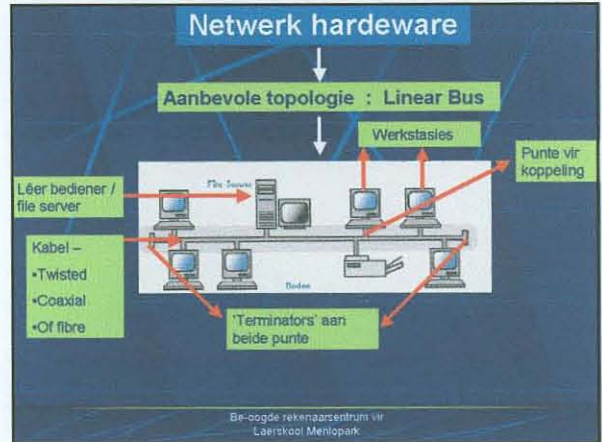
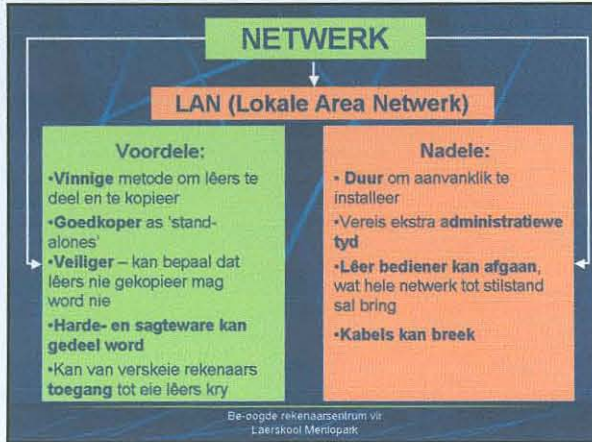
Twyfel u nog?

Lees dan die volgende anonieme aanhaling

Teen die jaar 2010 sal niemand, wat nie rekenaargeletterd is nie, enige betrekking suksesvol kan beklee nie!

Dit is dus nou die aangewese tyd om ons kinders vir die toekoms voor te berei

Be-ogde rekenaarcentrum vir
Laerskool Menlopark



Beraamde Koste

1.	20 x Rekenaars (werkstasies)	± R120 000,00
2.	1 x Server	± R 11 000,00
3.	2 x Drukkers	± R 4 000,00
4.	Lugversorging	± R 5 000,00
5.	UPS	± R 750,00
6.	Installering van Netwerk	± R 15 000,00
7.	Sagteware	± R 50 000,00
TOTAAL : Aanvanklike aankoopkoste		± R205 750,00

Be-ogde rekenaarsentrum vir Laerskool Menlopark

'n Uitdaging vir die toekoms!

'These instruments are' not uncommon, but are but little resorted to by the teacher. The teacher knows almost as little how to use it as the pupils.' (source unknown)

Hierdie aanhaling is in die 1840's van die swartbord gesê!

Be-ogde rekenaarcentrum vir Laerskool Menlopark

Rekenaarsentrum vir Laerskool Menlopark

Leerlingtal : 912

Aantal leerlinge per klas : ±30

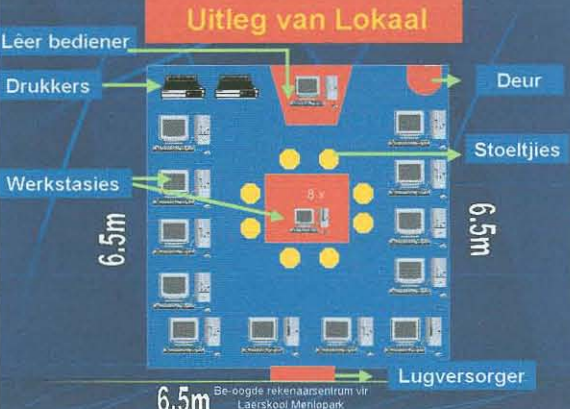
Be-ogde rekenaarcentrum vir Laerskool Menlopark

Benodighede

- Lokaal
- Hardware/Apparaatuur
- Netwerk
- Sagteware/Programmatuur
- Lugversorging
- Personel

Be-ogde rekenaarcentrum vir Laerskool Menlopark

Uitleg van Lokaal



Labels in diagram: Lêer bediener, Drukkers, Werkstasies, Deur, Stoeltjies, Lugversorger.

Be-ogde rekenaarcentrum vir Laerskool Menlopark

Hardware

- 20 x rekenaars (werkstasies)**
Intel® Celeron™ Processor 633Mhz • 10GB HDD • 64MB RAM • 52 X CD ROM drive • 56K Fax modem • 16 BIT 3D sound card & speakers • MS PS2 mouse • MS Windows Millennium Edition • Ethernet Card
- 2 x drukkers**
HP Deskjet 959C • Up to 11 ppm • 2400 x 1200 dpi mode on photo paper • Parallel and USB support • 4MB ram
- 1 x Lêer Bediener**
Compaq Presario 5WV 255 • AMD® Duron™ Processor 750Mhz • 30GB HDD • 64MB RAM • 8 x DVD and 4 x CD writer drives • 56K Fax modem • Nvidia Vanta LT 8MB 2 x AGP Video Card • MS Windows Millennium Edition

Be-ogde rekenaarcentrum vir Laerskool Menlopark

Ander (opsionele) benodighede

- Lugversorger**
• Om temperatuur in rekenaarlokaal te reguleer
- Kragbystandseenheid (UPS)**
• Uninterruptible Power Supply • verhoed dat rekenaars afsakel tydens 'n kragonderbreking • sorg dat kragtoevoer na rekenaars nie gedung fluktureer nie

Be-ogde rekenaarcentrum vir Laerskool Menlopark

Project 1 and 2

Class projects

LIKES AND DISLIKES ON URL's

Learning area: Computer Skills (Elize Fürstenburg)

<http://www.hotwired.lycos.com>

LIKES:					
	Colourful	Good information	Good pictures	Pictures and text complement each other	Makes you inquisitive
Anne-Marie	x	x	x	x	x
Sannette	x	x	x	x	x
Elize	x	x	x	x	X
DISLIKES:					
	None				
Anne-Marie	x				
Sannette	x				
Elize	x				

<http://www.cfy.org/>

LIKES:					
	Striking heading				
Anne-Marie	x				
Sannette	x				
Elize	x				
DISLIKES:					
	Not interesting layout	Too much text	No pictures		
Anne-Marie	x	x	x		
Sannette	x	x	x		
Elize	x	x	x		

Learning area: Science and technology (Sanette Bornmann)

<http://www.rainorshine.com>

Gedoen deur: Elize Fürstenburg
Sannette Bornmann
Anne-Marie Lubbe

Aufar
26/2/2001

E. Fürstenburg

f

URL's ON SPECIFIC LEARNING AREAS : EVALUATED BY ELIZE FÜRSTENBURG

LEARNING AREA	GRADE	URL	LIKES	DISLIKES
Computer skills (Elize)	7	http://www.hotwired.lycos.com	-Colourful -Background -Pictures -Text -Pictures and text complement each other	
Computer skills (Elize)	7	http://www.cfy.org/	Heading tells you exactly what website is about	-too much text -dull presentation
Science and Technology (Sannette)	4	http://www.excite.com/weather	-you can see immediately what the topic is about because of the map	-too much information on first web page -nothing really stands out on the page, except the map
Science and technology (Sannette)	4	http://www.rainorshine.com/	-I like the images on the first page -I like the short summary underneath every image	-too much detail on first web page -layout of information isn't striking

Aafay 26/2/2001
 Elize Fürstenburg

TGK 1 (Anne-Marie)	5	http://www.storiewerf.co.za	-very appropriate/striking pictures -user friendly -colourful	-needs a striking background
TGK 1 (Anne-Marie)	5	http://www.atkv.org.za/	-very striking picture, it attracts your attention immediately	-it doesn't say much about the topic when you just look at the picture
HSS (Abraham)	6	http://www.images.org/images/iow.nsf	-colourful -striking -good layout	-no detailed information on first web page -name does not say much about content

Clayton 26/2/2001
E. Fürstenburg

Voltooi deur : Elice Fürstenburg

TEN WEBSITE DESIGN PRINCIPLES

<http://jeffglover.com/sucky.html>
<http://info.med.yale.edu/caim/manual/sites>

1. Keep your pictures down to thumbnail size.
2. Sounds and music on site must not be too loud.
3. Use good scans or negatives.
4. Use a combination of graphic design and layout.
5. Keep information short – smaller discrete units of information are more functional and easier for the user.
6. Organize your information in a logical manner – establish a hierarchy of importance.
7. Use a uniform format for organizing and presenting your information.
8. Concise chunks of information are better suited to computer screen.
9. Build a hierarchy of menus and pages that feels natural and easy for user to use.
10. Use colour.

Voltooi deur : Elise Fürstenburg

aan 26/2/2007
Elise Fürstenburg

Laerskool Menlopark Voorskoolsentrum

- WordArt 18
- Kleur : Seeblau (kleur van loop)
- Agtergrond van blad - liggeel (kleur van loop)
- Beingsel - agtergrond lig, skrif donkerder
- center van bladey

Graphic

- Bordjie wat voor skool hang

- graphic \pm 1cm x 1cm (kleure blau en donkerblau)
- center van bladey
- graphic om aandag te trek

Adres

- blokke \pm 1cm x 1cm
- donkerblau room

Agtergrond

- blokke \pm 1cm x 1cm
- donkerblau room

Visie en Merie

- blokke 1cm x 1cm
- donkerblau room

Beingsel

- blokke 1cm x 1cm
- donkerblau room

- Blokies is eenvoudig om nie oornedigheid te wees nie - aandag moet op naam en wapper gefokus wees

Elize Fürstenburg
Nr 20299789

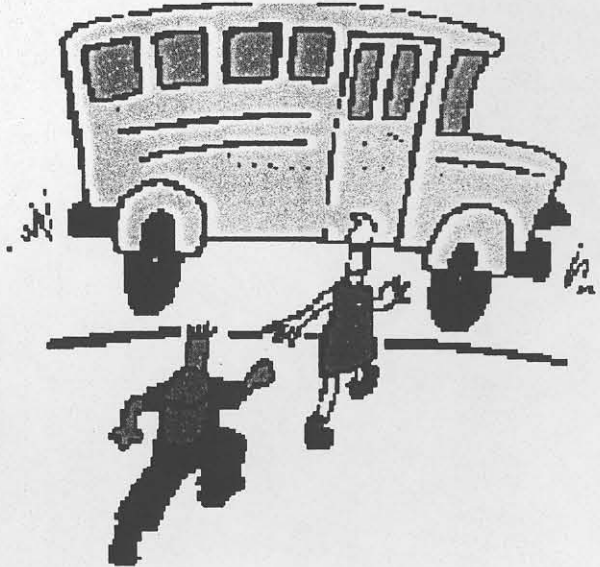
kopiereg voorberei!

Elize Fürstenburg

Aadjaan 12/3/2001

Lehen arb. elke bladsy

Laerskool Menlopark Voorskoolsentrum

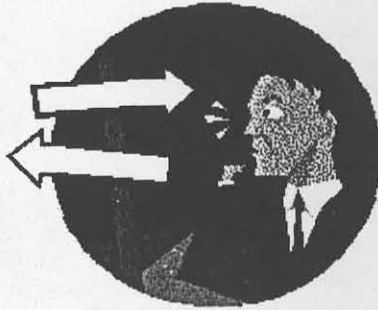


<u>Adres</u>	Agtergrond	Visie en Misie	Personeel
--------------	------------	----------------	-----------



Adres

Adres:



Terug

Arif van 12/3/200
Fürsteburg



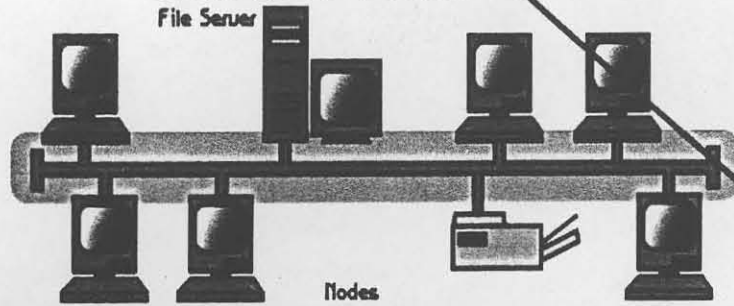
Student number	20299789	
Submit a document	1	1
Submit 5 page detailed storyboard for website	5	5
Submit proof of design principles applied	1	
Submit proof of Frontpage development	1	1
Submit proof of computer skills	1	1
Sign document	1	1
Total	10	9

Student number	20299789	
Submit a document	1	1
Submit rough storyboard for website	2	2
Submit exercise in Frontpage	1	1
Submit printout of work	1	1
Submit proof of text and graphics	2	2
Submit proof of link	1	1
Submit proof of format text	1	1
Submit proof of table / alignment	1	1
Total	10	10

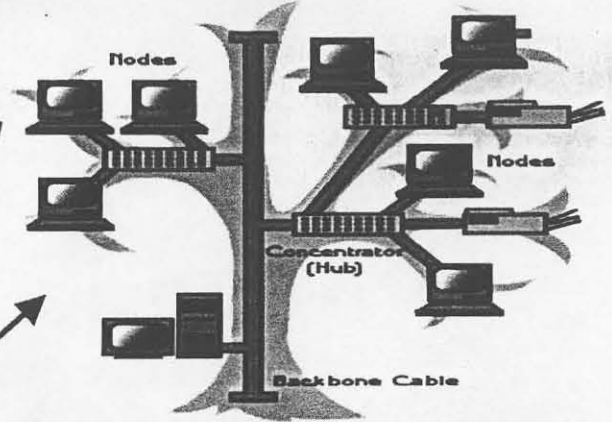
Student number	20299789	
Submit a document	1	1
Submit proof of document printed from URL	1	
Submit proof of document "What I have learnt"	1	1
Submit proof of group document	1	1
Submit proof of computer skills	2	2
Sign all documents	1	1
Construction of knowledge	3	3
Total	10	9

Student number	20299789	
Submit a document	1	1
Submit two relevant URLs in Learning Area	2	2
Evaluate like and dislike	2	2
Submit six URLs from group members	1	1
Submit URL Design Principles	1	1
Submit Design Principles (individual)	1	1
Submit Design Principles printout	1	
Submit Design Principles (group)	1	
Total	10	8

Linear Bus



Tree topology



Definition: The physical layout of the computers, cables and other hardware

Topology

- ◆ One main run of cable with terminators at each end.
- ◆ All nodes (workstations etc.) are connected to the cable
- ◆ E.g. of linear bus is Ethernet and Local Talk

Advantages-

- Easy to connect computers
- Requires less cable length than star topology

Disadvantages

- Entire network shuts down if there is a break in main cable
- Terminators are required at both ends.
- Difficult to identify problem if entire network shuts down

Combination of linear bus and star topologies.

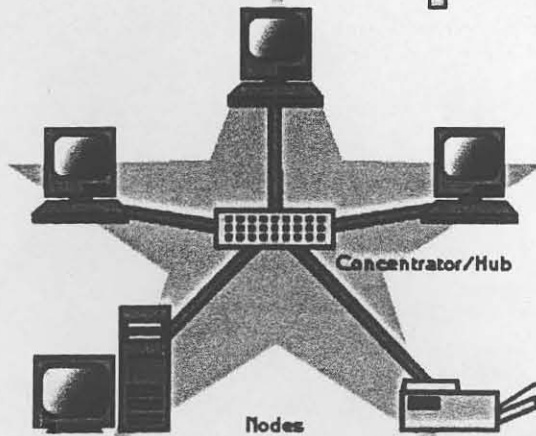
Advantages

- Point-to-point wiring for individual parts
- Supported by several hardware and software and vendors

Disadvantages

- Limited cabling length for each segment
- If backbone-line breaks each segment goes down
- Most difficult to configure and wire

star topology



Every workstation is connected directly to a central network, hub or concentrator
Data passes thru the hub/concentrator before going further

Advantages

- Easy to install
- No disruptions to network
- Easy to detect faults

Disadvantages

- Requires more cable length
- When hub/concentrator fails nodes are disabled
- More expensive

Adifan 14/4/2001

Presented by:
Elize and Sannette

Ernstburg 2029789
Bornman 2020300

1. **What is a network?**

- A network is where 2 or more computers connect to share resources (software and hardware)
- Computers may be linked through cables or telephone lines

Basic types of networks:

- Local Area Network (covers small areas, e.g. school) - LAN
- Metropolitan Area Network (connects large cities with one another - MAN
- Wide Area Network (connects large geographical areas) - WAN

Advantages:

- Provides means to share ideas and transfer finds
- Can share hardware and software

Disadvantages:

- very expensive to install

2. **What is a protocol:**

Computers can communicate with each other via protocol (a shared set of rules describing how to transmit data)

- Access methods
- Communication
- Physical layout
- Speed of data transfer
- Ethernet
- LocalTalk

3. **What is networking hardware:**

Network hardware must include:

- Network card
- components
 - file servers
 - workstations
 - hubs
 - shared printers and other peripherals
- cables to connect
- protocol
- If signal is weak - bridge

4. **What is cabling:**

Cabling is the medium through which information moves

Different types of cabling:

1. UTP – Unshielded twisted pair cable
2. STP – shielded twisted pair
3. Wireless cabling – e.g. satellite for TV
4. CO-Axial cabling – cheaper, but slows down information
5. British Naval Connector
6. Fibre Optics – best transmitter, but very expensive.

5. **What is topology:**

Physical layout of computers.

Different types:


Adrian 14/4/2001

1. Linear Bus
 - one main run of cables with terminator on each end
 - all nodes connected to cable
 - easy way to connect computers, but entire network shuts down if there is a break in main cable
2. Tree topology
 - Combination of linear bus and star topologies
 - point to point wiring
 - Supported by several hard and software and vendors
 - Limited cabling
 - Most difficult to configure and wire
3. Star topology
 - every workstation is connected directly to a central network, hub or concentrator
 - data passes through the hub/concentrator before going further
 - easy to install
 - no disruption to network
 - requires more cable length
 - more expensive
4. Star-wired ring

6. **What is a operating system:**

1. Peer-to-peer communication and connection
2. Two computers, same software inside, change files and exchange information
3. Server-based – everything is loaded on the server
4. Combination of server-based and peer-to-peer connections at school

Elizabeth Fürstenburg 14/4/2001

Student number		
	 UNIVERSITEIT VAN PRETORIA UNIVERSITY OF PRETORIA YUNIBESITHI YA PRETORIA	
Submit a document		
Submit 5 page detailed storyboard for website	5	5
Submit proof of design principles applied	1	
Submit proof of Frontpage development	1	1
Submit proof of computer skills	1	1
Sign document	1	1
Total	10	9

Student number	20299789	
Submit a document	1	1
Submit two relevant URLs in Learning Area	2	2
Evaluate like and dislike	2	2
Submit six URLs from group members	1	1
Submit URL Design Principles	1	1
Submit Design Principles (individual)	1	1
Submit Design Principles printout	1	
Submit Design Principles (group)	1	
Total	10	8

Student number	20299789	
Submit a document	1	1
Submit rough storyboard for website	2	2
Submit exercise in Frontpage	1	1
Submit printout of work	1	1
Submit proof of text and graphics	2	2
Submit proof of link	1	1
Submit proof of format text	1	1
Submit proof of table / alignment	1	1
Total	10	10

Student number	20299789	
Submit a document	1	1
Submit proof of document printed from URL	1	
Submit proof of document "What I have learnt"	1	1
Submit proof of group document	1	1
Submit proof of computer skills	2	2
Sign all documents	1	1
Construction of knowledge	3	3

Toets (20) Studente nommer:

20299789

Hierdie rekenaar lokaal het 'n aantal rekenaars. Beantwoord die volgende met betrekking tot hierdie lokaal.

- 1.1 Watter tipe rekenaarsstelsel is in hierdie lokaal?
 - a. Alleenstaande rekenaars
 - b. 'n Netwerk
- 1.2 As watter tipe kombinasie sal u hierdie rekenaarsstelsel klassifiseer?
 - a. LAN
 - b. MAN
 - c. WAN
- 1.3 Watter een van die volgende twee stelsels is hierdie sentrum ?
 - a. Kliënt – Kliënt
 - b. Bediener – Kliënt
- 1.4 Watter tipe bekabeling word in hierdie sentrum gebruik?
 - a. Ko-aksiaal
 - b. UTP
 - c. STP
- 1.5 Wat is die topologie van hierdie rekenaarsentrum?
 - a. Bus
 - b. Ring
 - c. Ster
- 1.6 Is daar 'n "hub" in die lokaal?
 - a. Ja
 - b. Nee
- 1.7 Watter programmatuur word gebruik om hierdie rekenaarnetwerk te bedryf?
 - a. Windows 98
 - b. Novell
 - c. Windows NT
- 1.8 Klassifiseer die volgende as goeie, swak of geen voorbeeld van ontwerpbeginsels.
 - a. Mooi voorkoms
 - b. Donkergroen agtergrond en swart teks
 - c. Toepaslike inhoud
 - d. Korrekte taalgebruik en spelling
 - e. Grafika van ongeveer 15 KB
 - f. Teks in font grootte 10
 - g. Grafika wat as agtergrond gebruik word van orde 1,5 MB
 - h. Elke bladsy van die webwerf het 'n ander voorkoms

1.9 Waarvoor staan "URL"?

Universal Resource Locator ✓

1.10 Waarvoor staan "http"?

hypertext transport protocol

1.11 Waarvoor staan "WWW"?

world wide web ✓

1.12 Waarvoor staan "HTML"?

hypertext markup language ✓

1.13 Skryf 'n tipiese URL wat u ken neer (bv. Futurekids se URL, of u skool se URL).

http://www.lmp.co.za ✓

1.14 Skryf neer die stappe wat u sal volg om 'n nuwe webwerf te skep:

Step in nuwe folder in Windows Explorer bv.

1. C:/
2. My documents ✓
3. 20299789 (studentenommer)
4. New Folder (Website) - rename folder to Website
5. Gaan na Start → Programs → MS Frontpage 98
 - (1) • Create a New Front Page Web
 - Choose the kind of FrontPage web to create
 - From Wizard or Template
 - Empty Web
 - (2) • Choose a title for Web
 - C:/My documents/20299789/Website

OK

DATE OF ASSESSMENT:

Name of Assessor:

Assessor signed:

Studentnumber: 20299789	Self assessment	Peer assessment	Tutor assessment			
New Technologies (NTG 471): Assessment Matrix						
Specific Outcomes	Assessment Criteria	C	NYC	Range Statements	C	NYC
Specific Outcome 1 Identify, describe and apply knowledge on web based design	i. Design a web site for educational purposes	✓		Use an appropriate software program	✓	
	ii. Demonstrate a knowledge of sound design principles	✓		Apply design principles	✓	
	iii. Publish the web site	✓		Submit a URL	✓	
Specific Outcome 2 Understand the principles and application of networks	i. Knowledge of the components of a network	✓		i. LAN	✓	
				WAN		
				MAN		
	ii. Knowledge of the typology of a network	✓		ii. Bus	✓	
				Star	✓	
				Ring	✓	
	iii. Knowledge of the cabling of a network	✓		iii. Co-axial	✓	
				UTP	✓	
	iv. Knowledge of the different types of networks	✓		iv. Server-based	✓	
				Peer-to-peer	✓	
v. Knowledge of the administration of networks	✓		v. Compile a strategy for the implementation of a network in the institution according to the needs	✓		
			Knowledge of common concepts, e.g. sharing			

Computer Centre

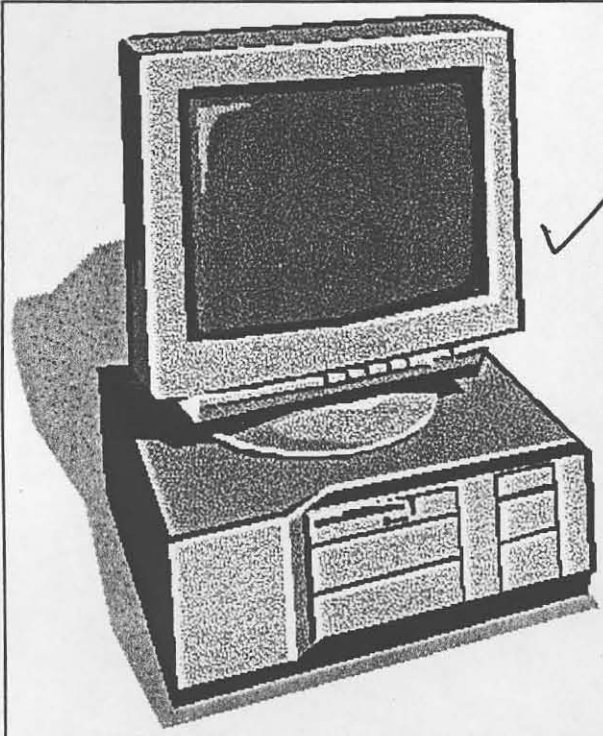
NETWORK	RECOMMENDATION	REASON
Components of a network	<ul style="list-style-type: none"> ➤ Server (20Gigabyte, 64RAM, CD-Rom, CD writer, stiffy drive, ±700Mhz) 	<ul style="list-style-type: none"> ➤ Heart of the center
	<ul style="list-style-type: none"> ➤ ±20 users (±Pentium 1 or 2, 32RAM, CD-Rom, stiffy drive, 600MHz) 	<ul style="list-style-type: none"> ➤ To be connected to the network – cheaper than stand-alones as one can share the hard and software
	<ul style="list-style-type: none"> ➤ 2 x HP 895 Printers 	<ul style="list-style-type: none"> ➤ Printers can be shared by the users on a network system
	<ul style="list-style-type: none"> ➤ Cabling 	<ul style="list-style-type: none"> ➤ To transmit data to the different computers connected to the network
	<ul style="list-style-type: none"> ➤ Protocol 	<ul style="list-style-type: none"> ➤ Computers can communicate via protocol (shared set of rules how to transmit data, e.g. access methods, topology, etc)
	<ul style="list-style-type: none"> ➤ Network Interface card 	<ul style="list-style-type: none"> ➤ Connecting the computers to the network
	<ul style="list-style-type: none"> ➤ Hub 	<ul style="list-style-type: none"> ➤ Central device to which cables are connected. sends

[Handwritten signature]

NETWORK	RECOMMENDATION	REASON
<p>Topology</p>	<p>Star topology</p> <p><i>limited frames!</i></p>	<p>data to different computers</p> <ul style="list-style-type: none"> ➤ All the computers are connected to a central hub ➤ If one computer goes down – whole network does not fail ➤ Data is transmitted quite fast as it is sent to the hub and from there it is sent to the next computer – does not have to go through all the computers
<p>Cabling</p>	<p>UTP cabling ✓</p>	<p>Transmits data faster than co-axial cabling ✓</p>
<p>Type of network</p>	<p>➤ LAN ✓</p>	<ul style="list-style-type: none"> ➤ Connects all the computers in the school to the network ✓ ➤ Software and hardware can be shared ✓ ➤ Pupils can work on any computer on a given project ➤ People can work simultaneously on a project on different computers

NETWORK	RECOMMENDATION	REASON
	> Server/ peer to peer	> Combination of server and peer to peer operating system
Five uses for the centre	> Education – pupils	> Educating pupils in computer hardware and software
	> Education – adults	> Educating adults (after hours) in computer hardware and software as most parent, especially mothers, are still not computer literate!
	> Research	> Pupils can do research on projects on the Internet and Encarta
	> Communication	> Pupils can communicate via e-mail with parents, friends, pen pals, etc
	> Extra income	> Letting the center after hours to companies for computer training

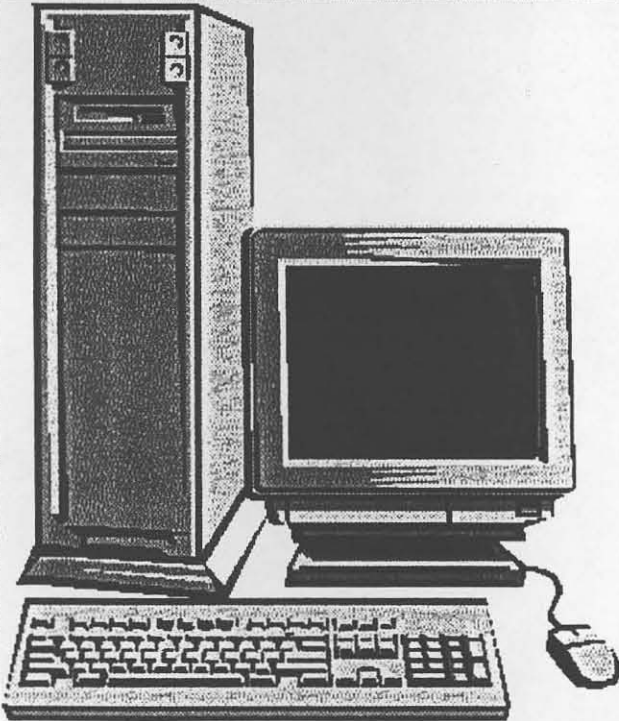
REKENAARSENTRUM



✓
Onderrig in GF ✓
Onderrig in ISF ✓

Onderrig in die GF ✓

**Juniors ontvang onderrig in die volgende
hardeware:**



- ✓
- muis
 - sleutelbord
 - rekenaarkas
 - rekenaarskerm

SAGTEWARE WAT GEBRUIK WORD: ✓

- ✓
1. Cairoo perseptuele program
 2. Woel met Wiskunde
 3. MS Paint It
 4. MS Play It



EVALUATION OF URL : <http://www.lmp.co.za>

Design Principles	Evaluation
The website must not be static – it must be updated regularly – it must therefore be dynamic ✓	The first page of the site was updated on 8/3/2001 – so it is dynamic The programme for the week of 15 May is on the website as well ✓
Use colour to compliment the site – when using a dark background, use a lighter colour for the font ✓	The website mostly uses a light colour and darker font ✓ The font compliments the colour of the background ✓
All links must work ✓	The links to the different pages work and the menu at the bottom of every page works as links ✓
Grammar used in the website must be correct ✓	The grammar used in the website is correct ✓
Utilize the interface – prevent too much scrolling ✓	At some places there is quite a bit of scrolling to be done, but mostly the interface has been utilized well ✓
Use a combination of graphics and text	A combination of graphics and text has been used throughout
Text must match your audition	The text does match the audition (mostly parents) and we notice continuity in using the same heading, fonts, and background throughout
Concise bits of information is better used on a website than a large amount of text	Information on every page is mostly short and to the point

nos.

[Handwritten signature]