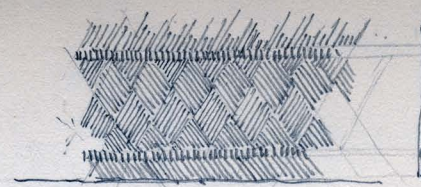
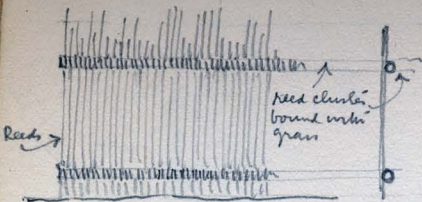


The adlong King's Palace was in the most vulgar European Renaissance, Tax! Then moved me through (2 miles further) to Tomb. I noted Catholic + Protestant Cathedrals, Cathedrals on hill tops opposite one another (the latter the bigger??) - Noted very interesting road palisade in area near 'KRAAL', fine basket like effect.



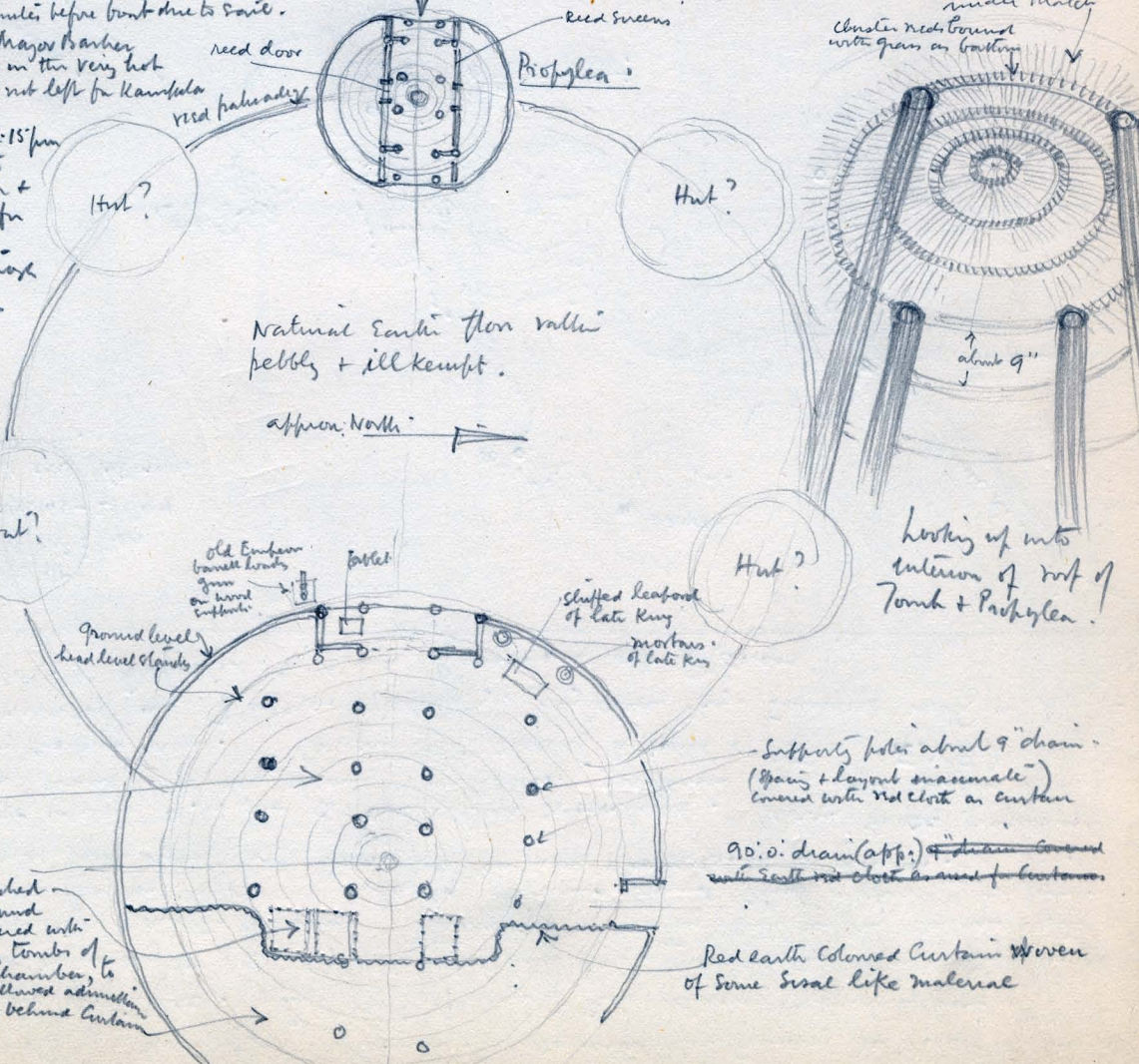
Palisade to King's Palace + Great Office

weave palisades.

King's Tomb (M'Tosi) on a hill west of Kampala off Bongo road. Beautiful burial site. Only had 5 minutes there having to race back to get into Mrs Meyer's car; Port of Spain (11.40) + got back to ground at 11.53 (5 minutes before bomb due to sail).

Said goodbye to Major Barber who was sitting in the very hot train which had not left for Kampala yet.  
Boat sailed at 12:15 pm. Had gin + lime with Denny's on deck + then went below for lunch. Travelled back through Port Bell Gulf St. Clear day. Getting rather hot.

GTN 0310 747



Natural Earth floor rather pebbly + ill kept.

approx. North

Looking up into interior of roof of Tomb + Propylea

Supports poles about 9" diam. (Many + layout inaccurate) covered with red cloth or curtain

90:0:0 drain (app.) drain covered with soft red cloth as usual for burials

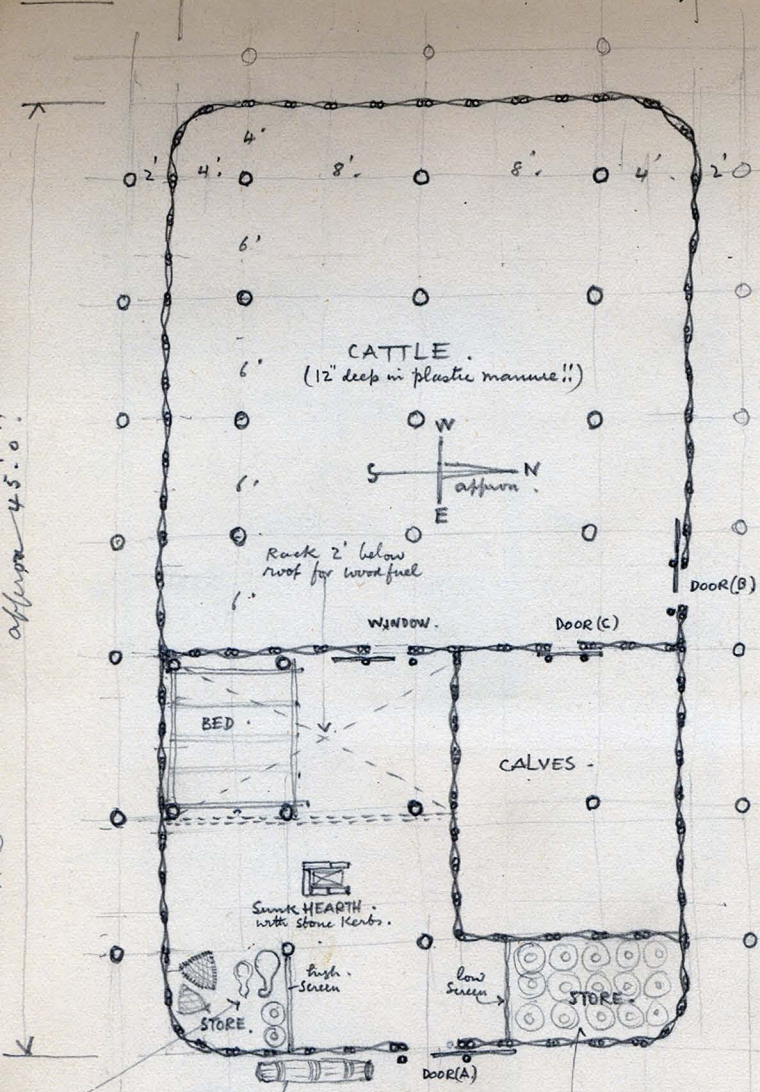
Red earth coloured curtain woven of some sisal like material

Palisade of polished brass (?) spears round raised slab covered with cloth richly embroidered with three Kings. toward chamber, to which doors not allowed admission. I understand lay behind curtain

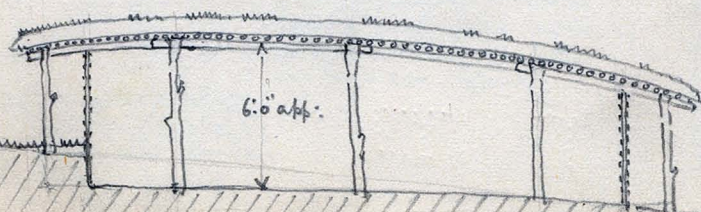
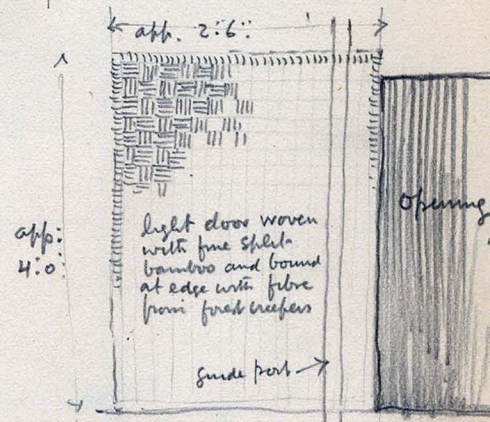
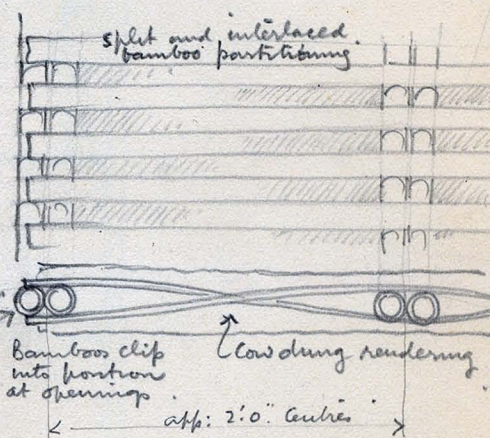
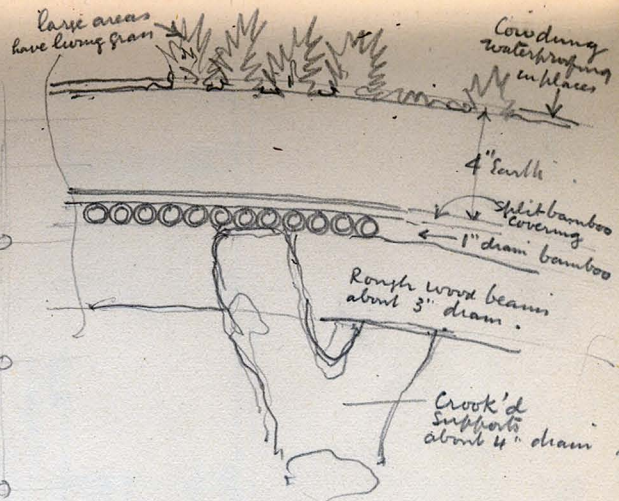


MASAI: MANYATTA. on Mount ELGON. at 12,000 ft.

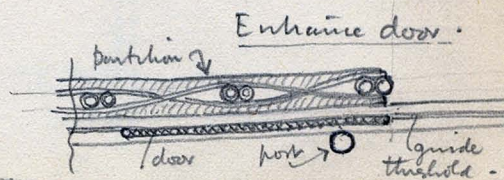
31' 12" 44"      approx 24' 0"



approx 45' 0"



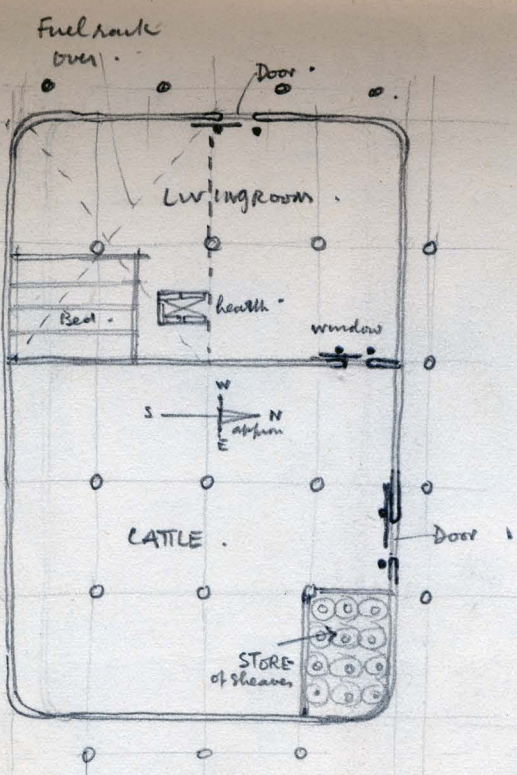
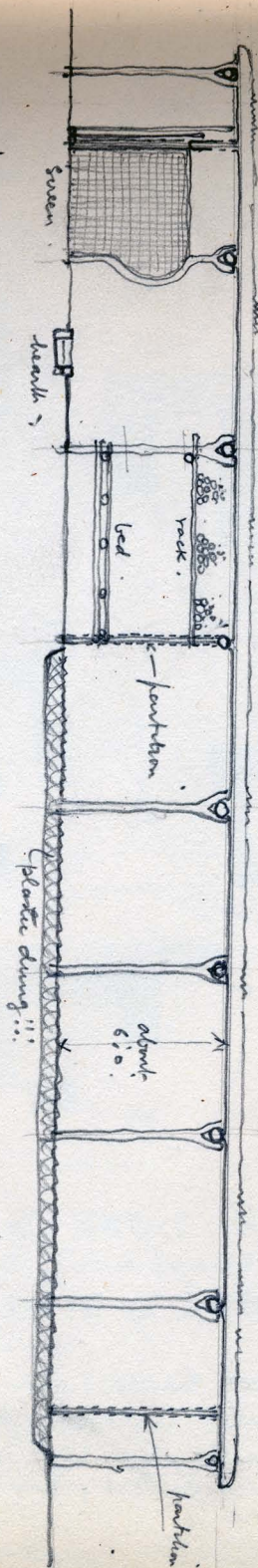
Section.



Plan of Door.

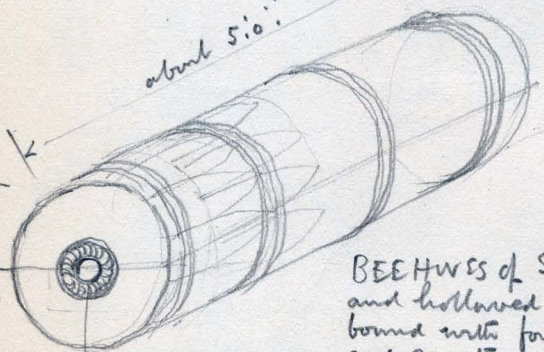
Mount Edgson. 31: P: 43.

Lengthwise - SECTION. LARGE. MAMYATTA.



A. Smaller MAMYATTA adjoining the large one -

about 5' 0" ...



BEEHIVES of split and hollowed trunks bound with forest creeper, and sometimes sheathed in bamboo leaves.

4" dia. bung hole plugged with ring of plaster glass with centre stopper of clay.

GTN 0313 SKS

2' 15" 2' 15" 2' 15" 2' 15"

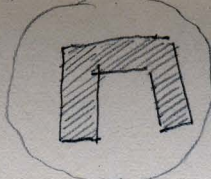
Thorn  
bushes?



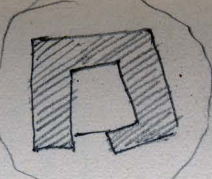
1



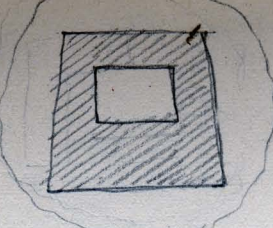
2



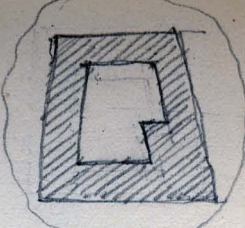
3



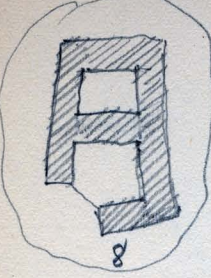
4



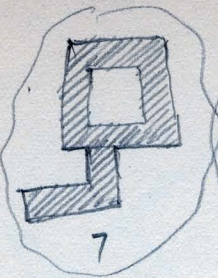
5



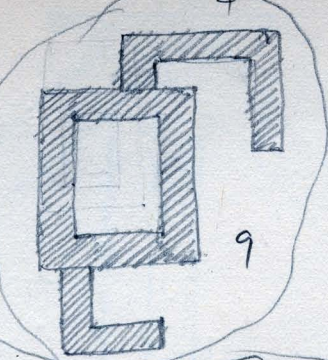
6



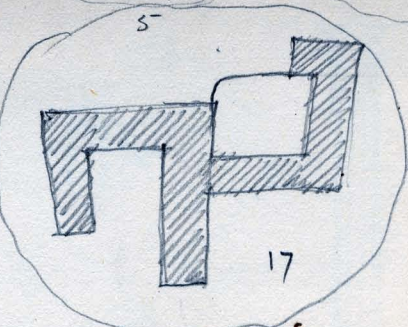
8



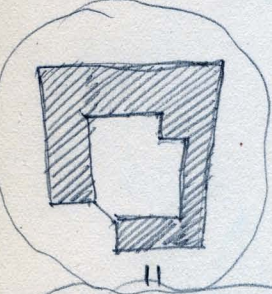
7



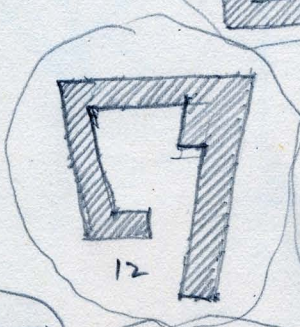
9



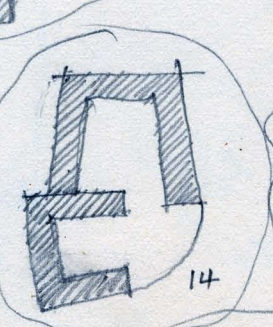
17



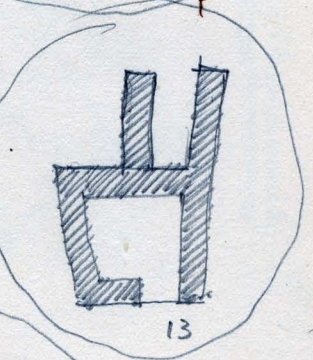
11



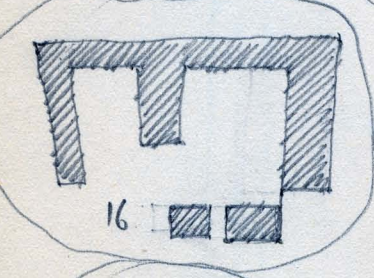
12



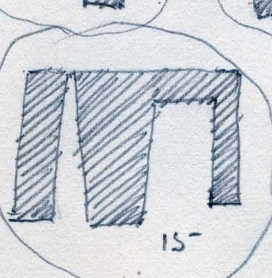
14



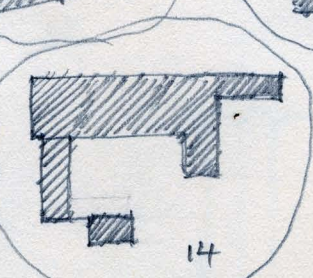
13



16

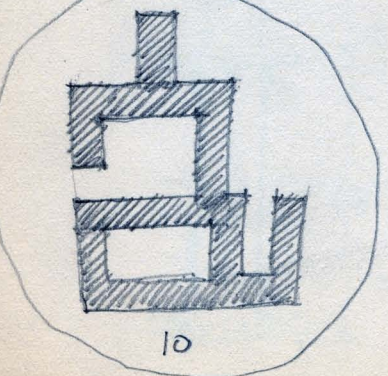


15



14

These huts  
probably same  
construction as those  
at New Iringa.

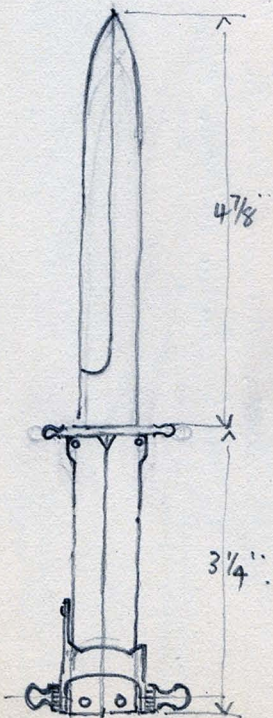
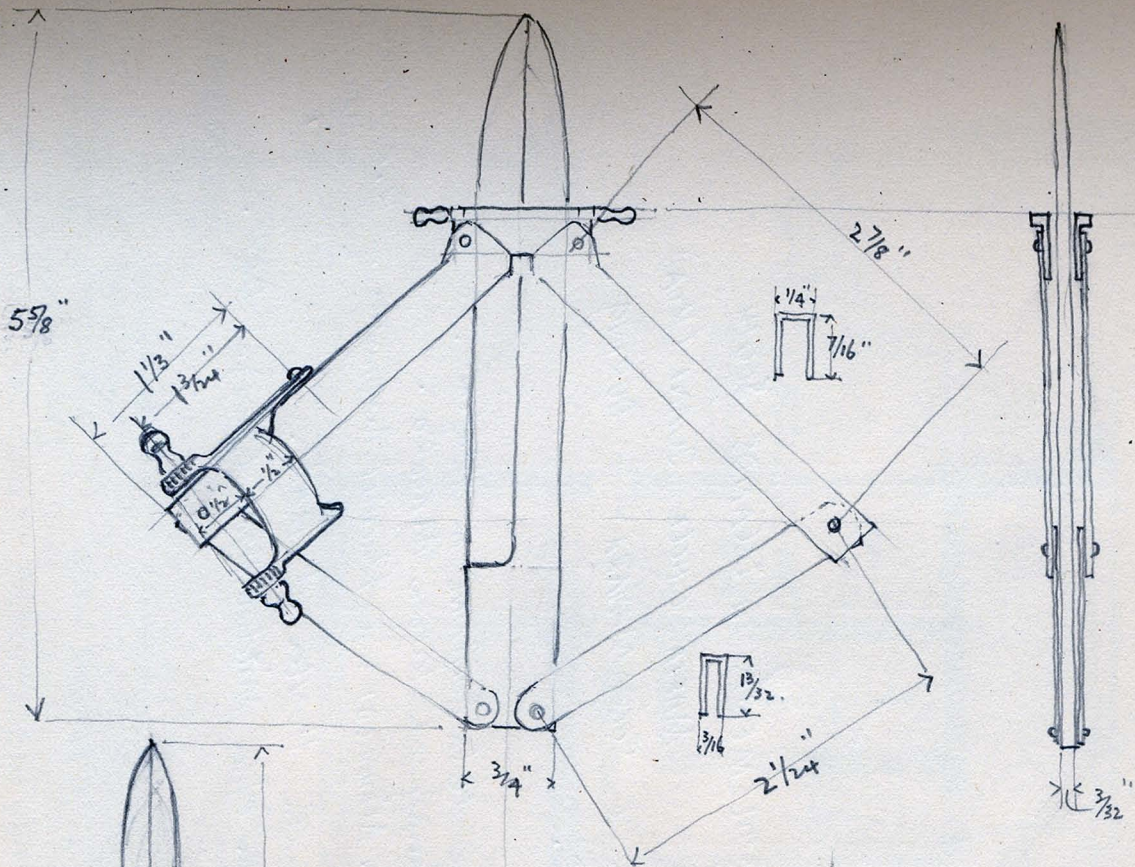


10

### COMPLEXES of NATIVE DWELLINGS SEEN from AIR. (about 2000ft) A FEW MILES SOUTH. WEST. of DODOMA in TANGANYIKA.

All with flat earth covered roofs and  
placed in roughly circular clearings which  
appeared to be enclosed with thorn bush barricade.  
Flatish rolling country which was very green  
(18<sup>th</sup> January 1948)

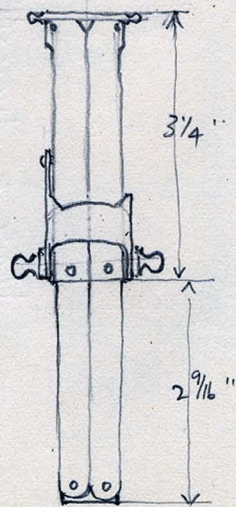
All isolated dwellings. No village groups seen.



OPEN.

Folding Knife  
 Seen in Indian  
 Store in KITALE.  
 (January 1944)

Brass Case with  
 Steel Blade.  
 Very crudely made.  
 Probably from India.



CLOSED

VISIT TO ANCIENT SETTLEMENTS ON ISLANDS SOUTH  
OF DAR-ES-SALAAM — MAFIA, CHOLE, JUANI (KUA)  
KILWA KISIWANI and SONGO MANARA — DURING  
DECEMBER 1953.

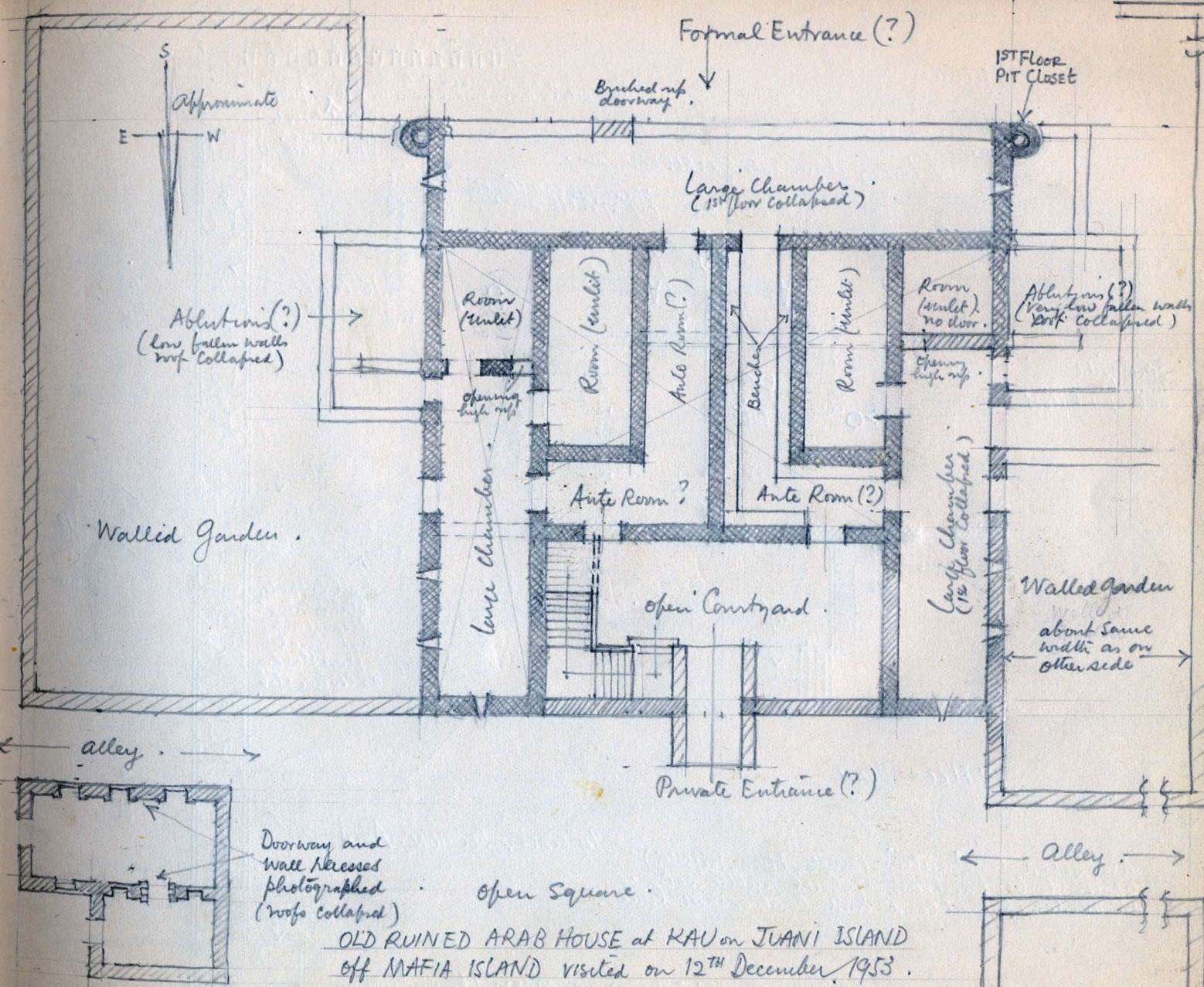
Met. (D.C.) King and de la FONTAINE on Mafia.

" (D.C.) Manwaring at Kilwa Masoko.

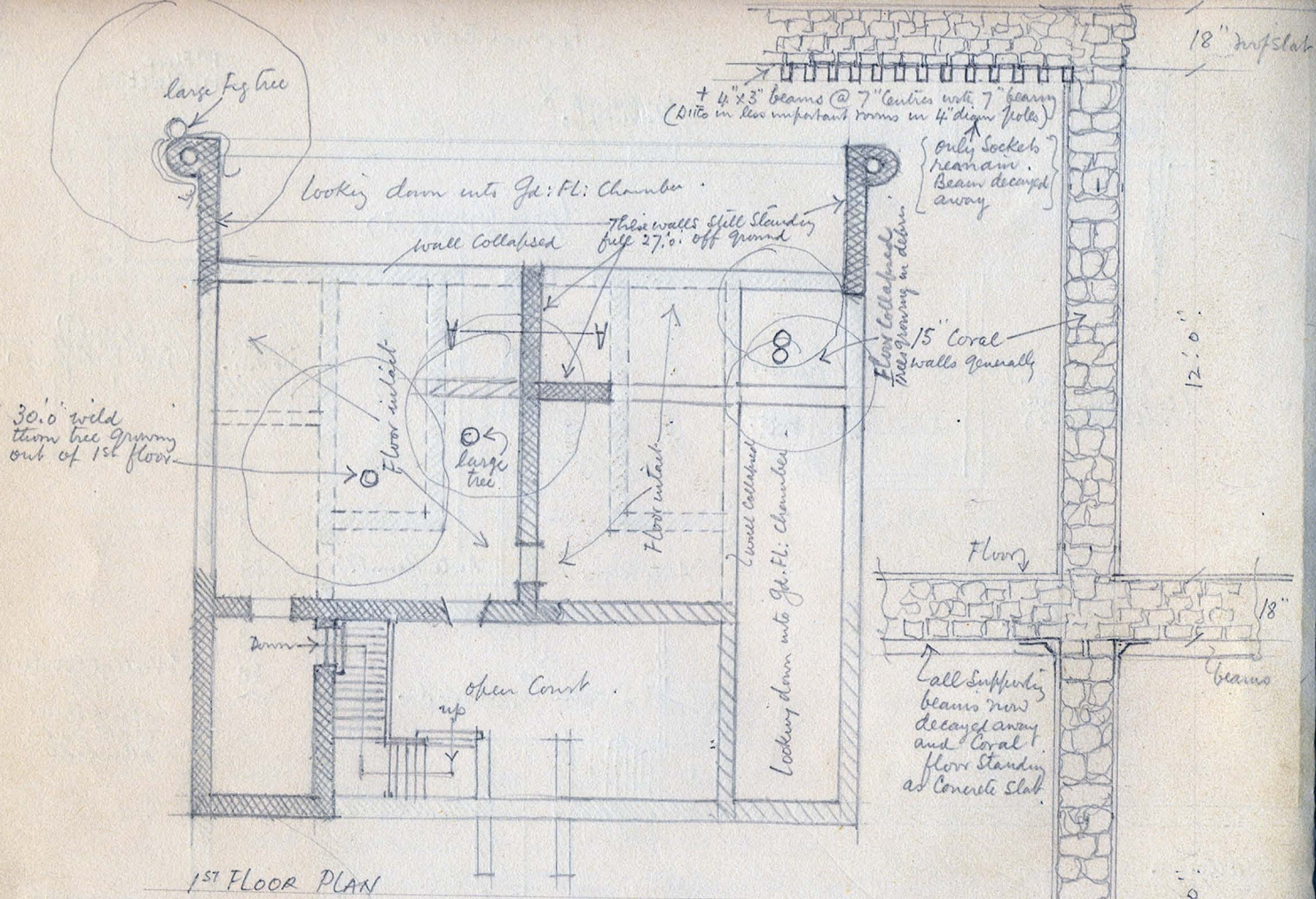
Had Guide. HASSAN MAHOMED and Rachidi Mahomedi in K. Kisiwani  
+ Songo Manara.

Met. Museum Curator HUNTER at DAR.

Spoke to Public Relations Officer Mitchell Hedger (Jnr) at DAR.







All solid construction (walls, floors, roofs etc.) appear to be built out of Coral rubble set in mortar of Coral sand and Coral or Shell lime.

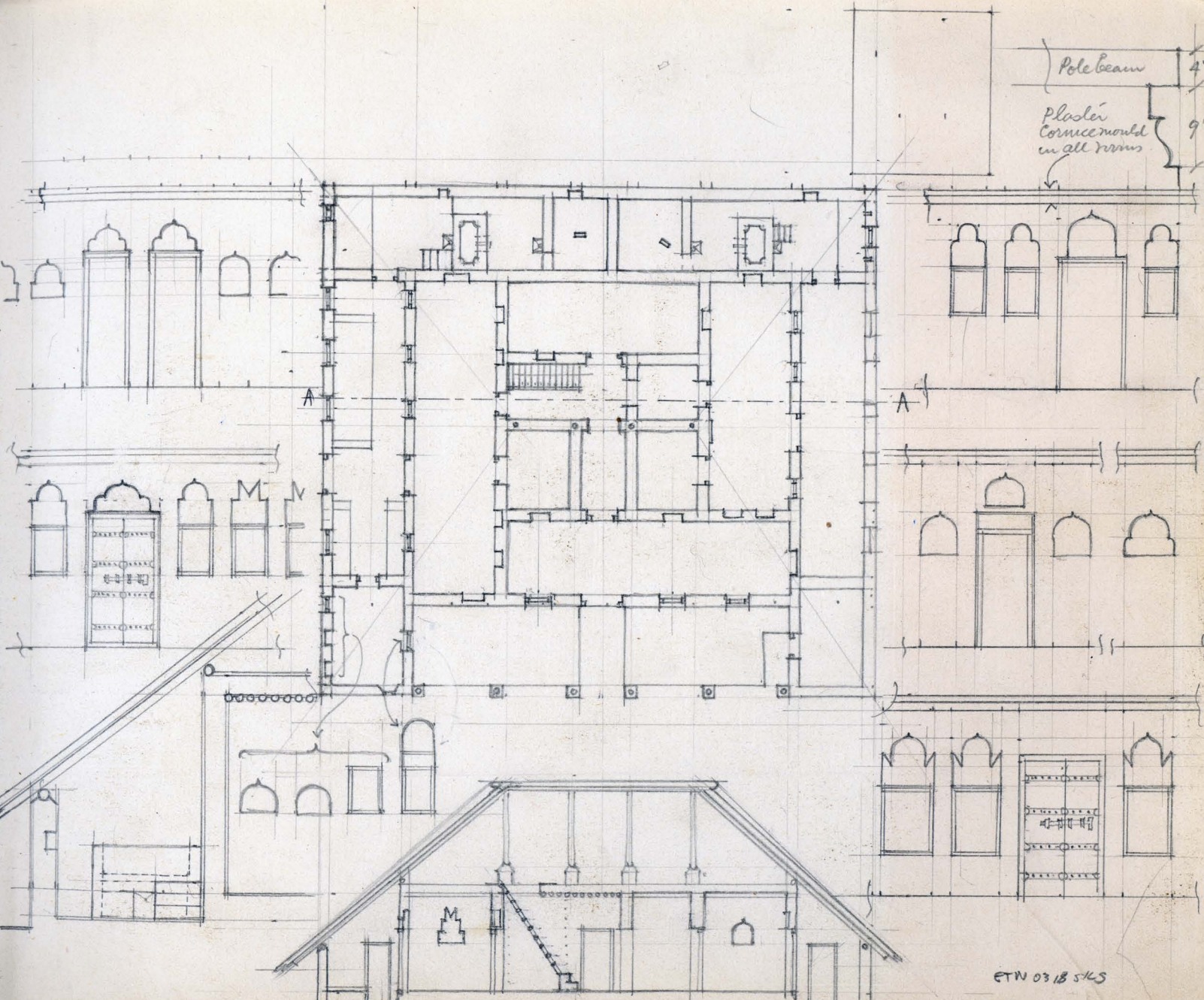
1/4" SCALE SECTION A-A

OLD RUINED ARAB HOUSE at KAU on JUANI ISLAND off. MAJIA Island. Floor

(Visited on 12/12/53)

GTW 0317 5165

Pole beam 4"  
Plaster  
Cornice mould  
in all rooms 9"



ETW 0318 5/65