

Figure 3-57: Mizpah Whole Tailings, dispersed and settled after 4 hour or >3 µm.

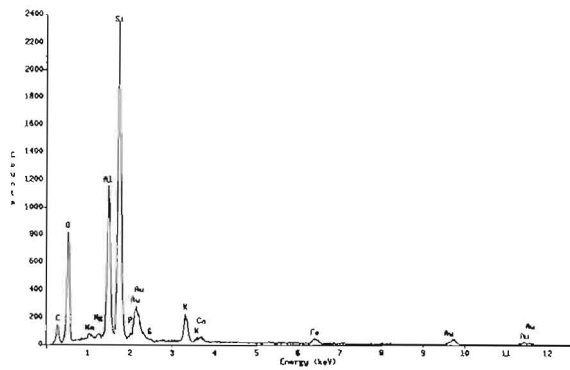
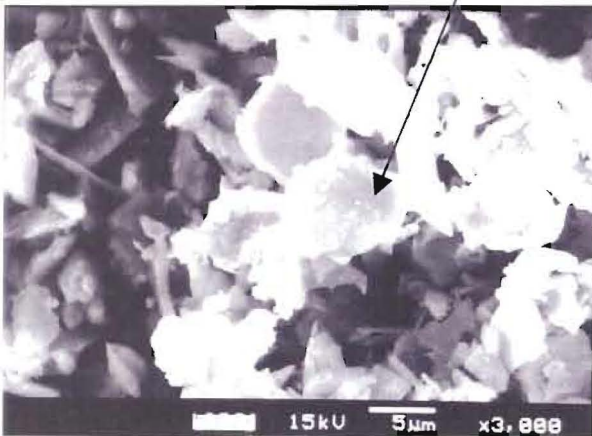
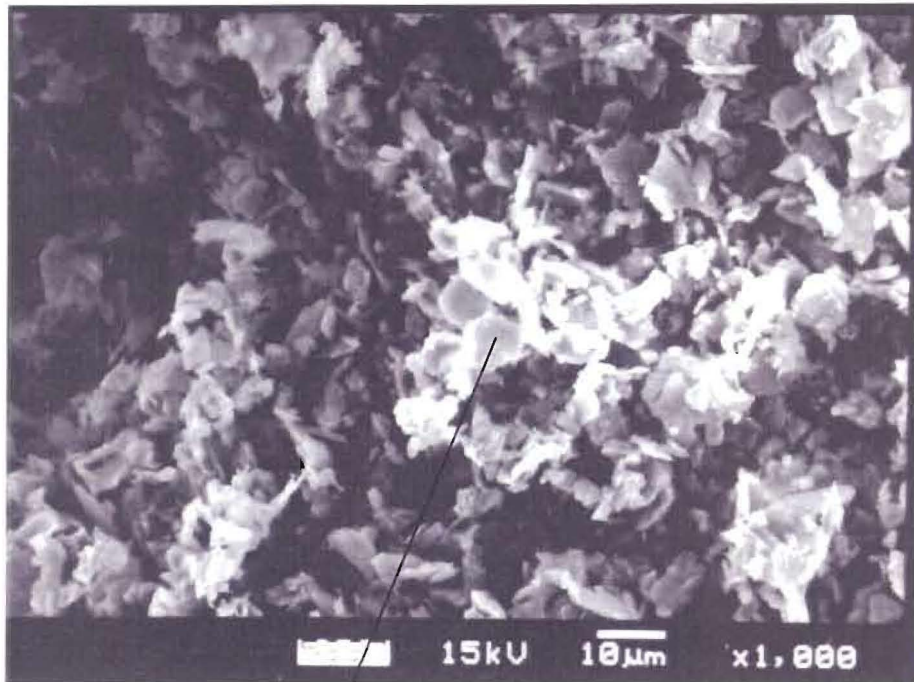


Figure 3-58: Mizpah Whole Tailings, dispersed and settled after 8 hours or >2 μm .

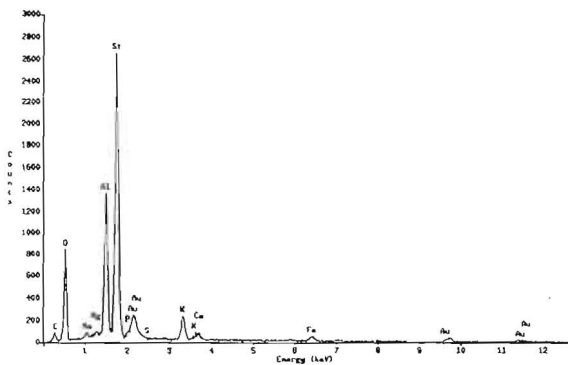
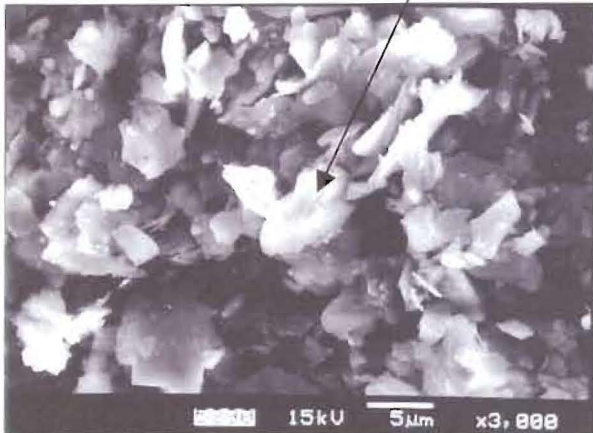
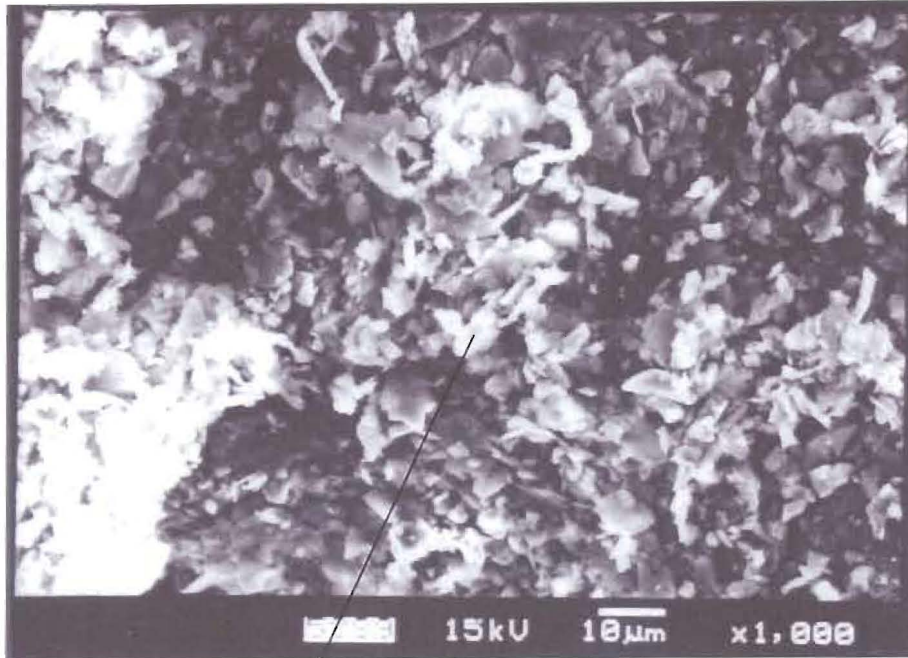


Figure 3-59: Mizpah Whole Tailings, dispersed and settled after 16 hours or >1.5 μm.

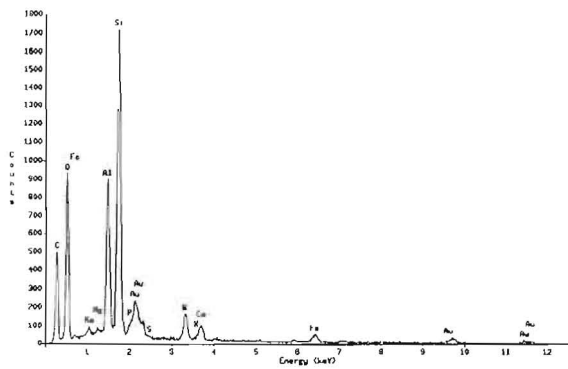
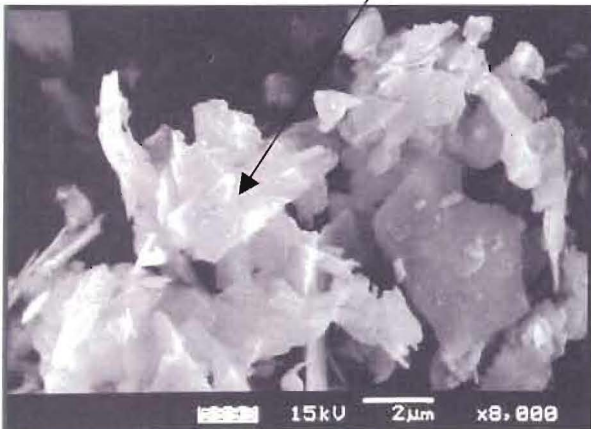
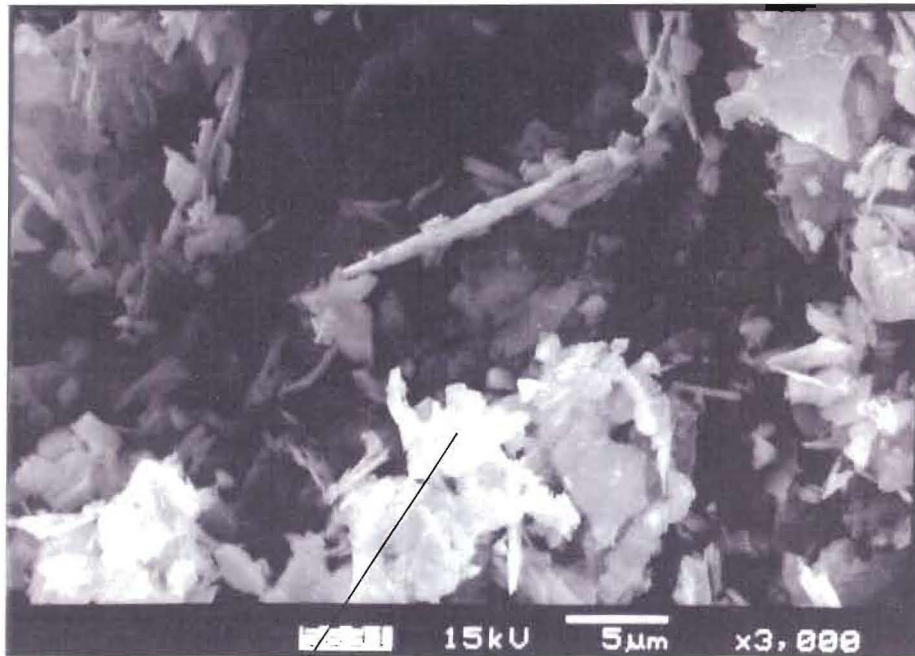


Figure 3-60: Mizpah Whole Tailings, dispersed and settled after 24 hours or >1.25 μm.

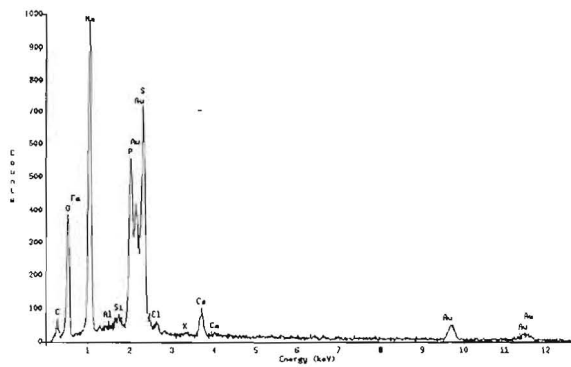
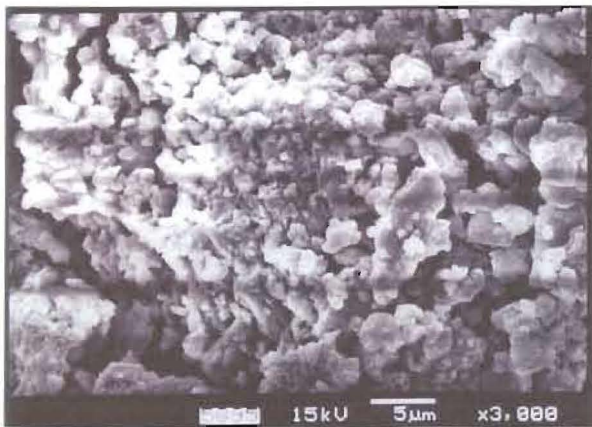
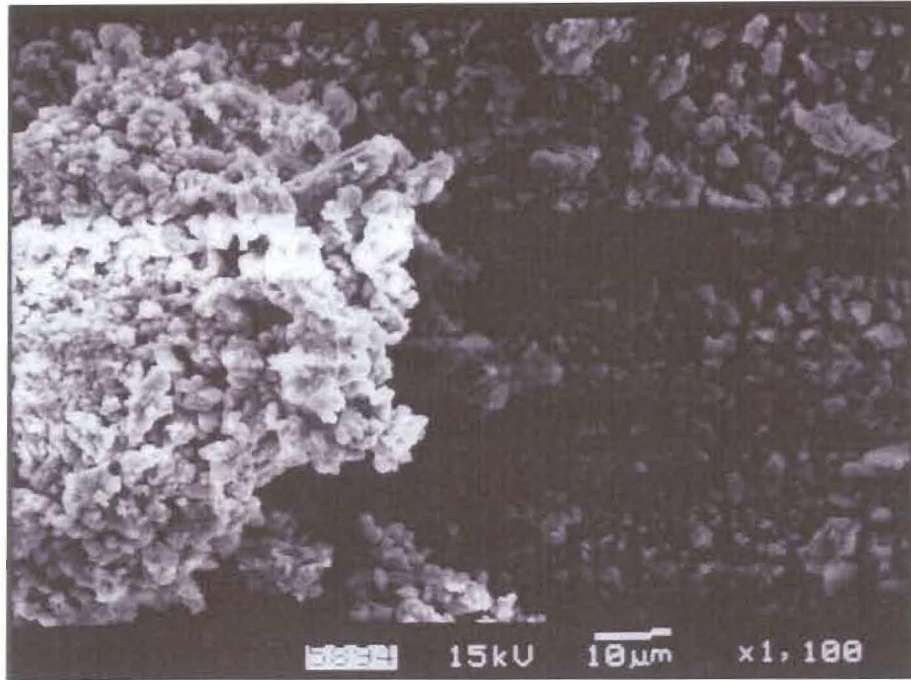


Figure 3-61: Mizpah Whole Tailings, dispersed effluent in sedimentation cylinder.

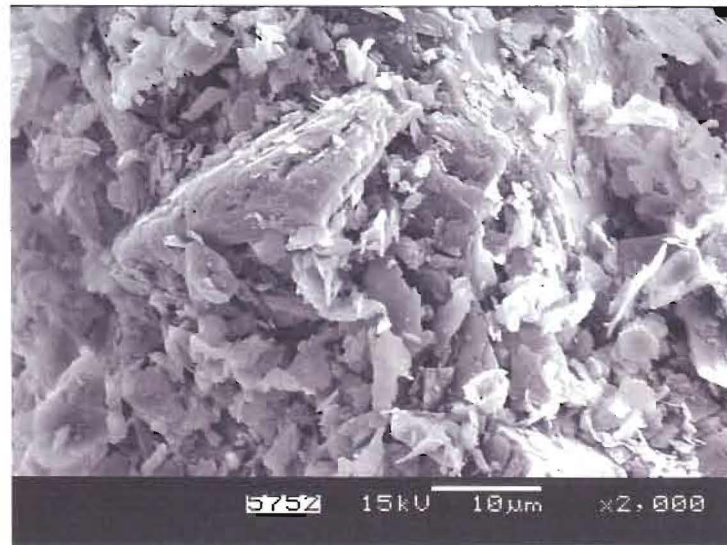
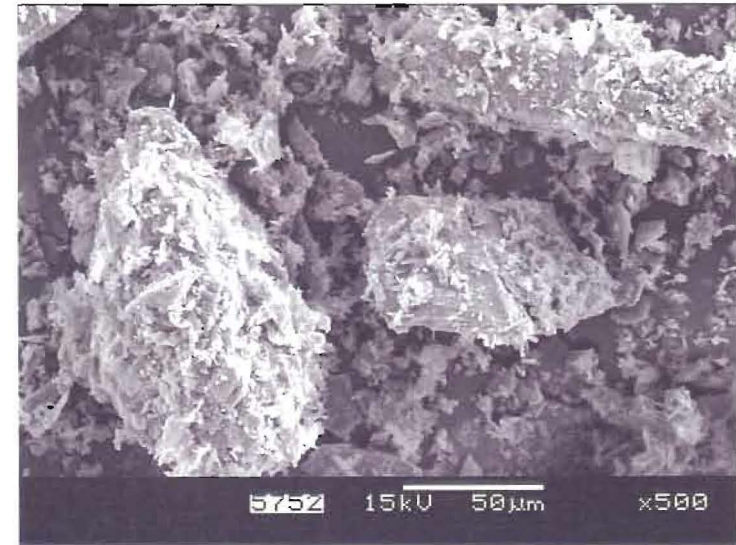


Figure 3-62: Mizpah Pond Fine Tailings, undispersed bulk specimen.

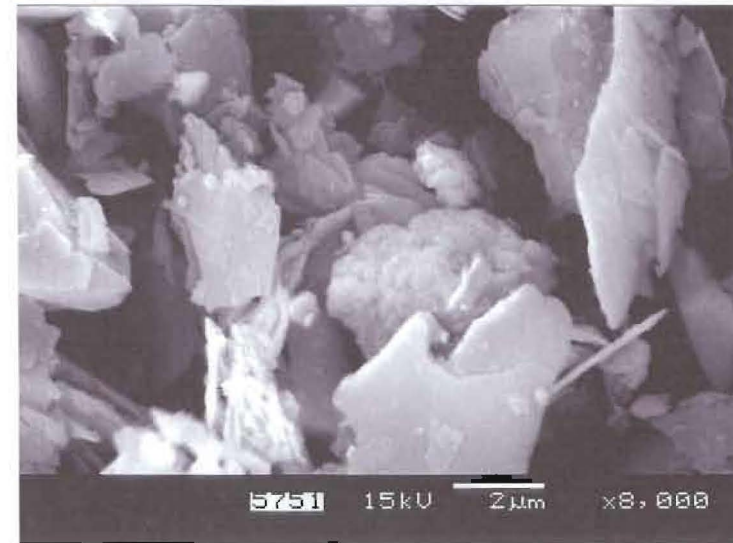
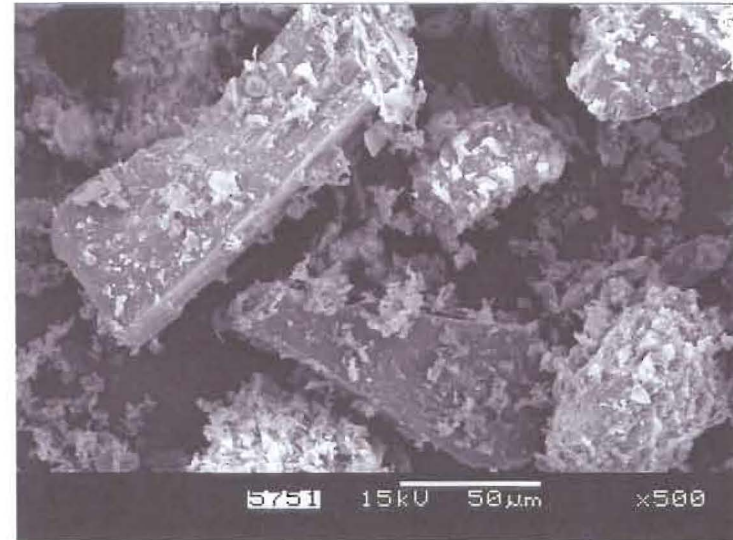
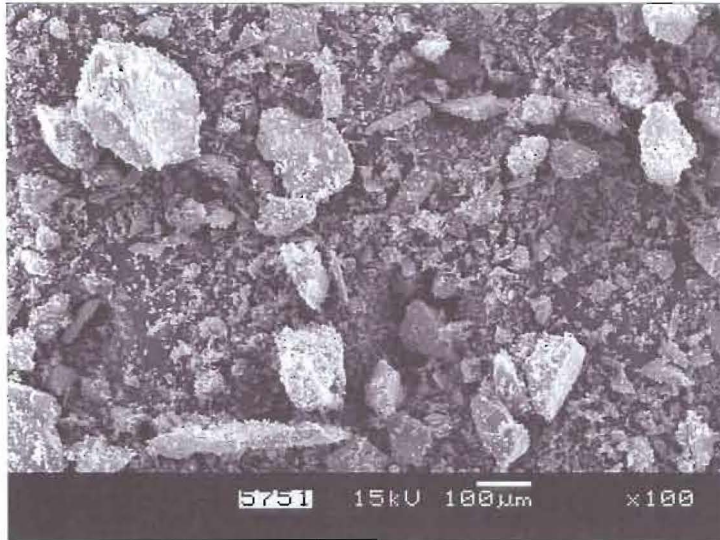


Figure 3-63: Mizpah Pond Coarse Tailings, undispersed bulk specimen.

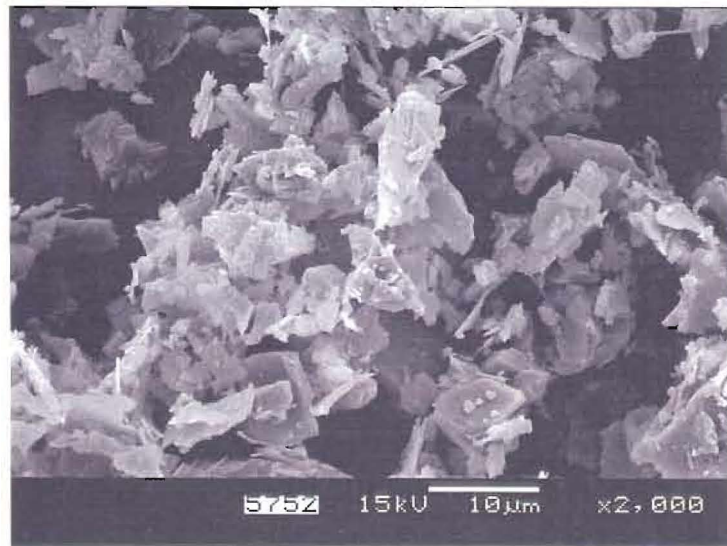
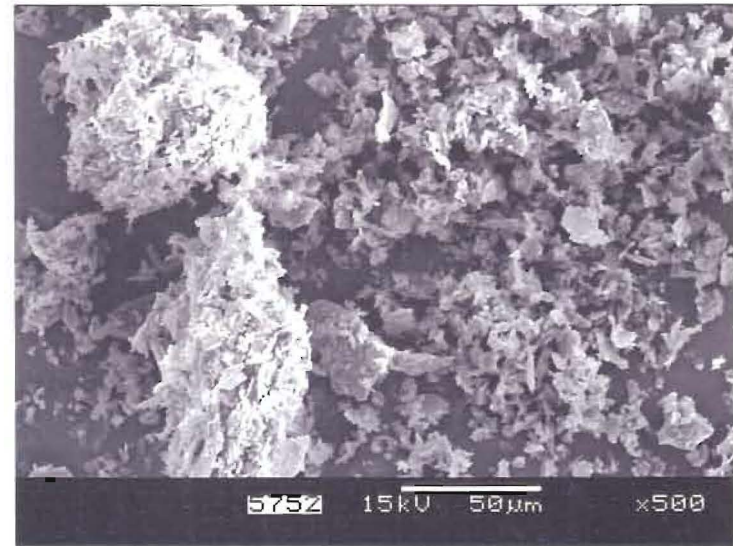
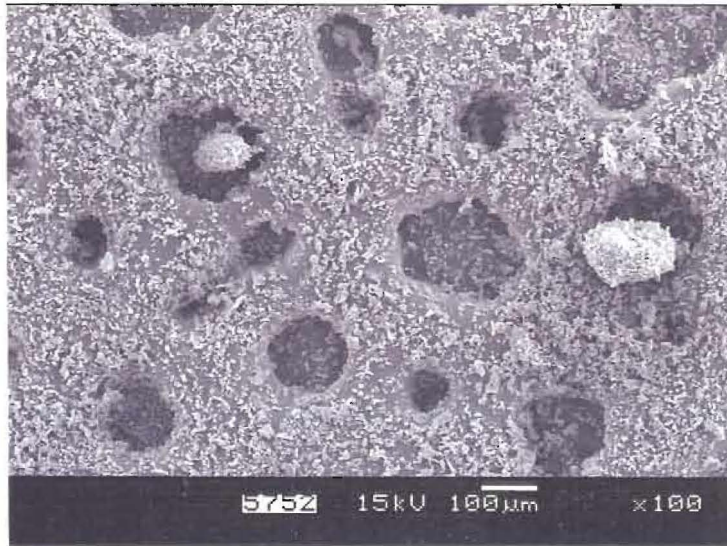


Figure 3-64: Pay Dam Penstock Fine Tailings, undispersed bulk specimen.

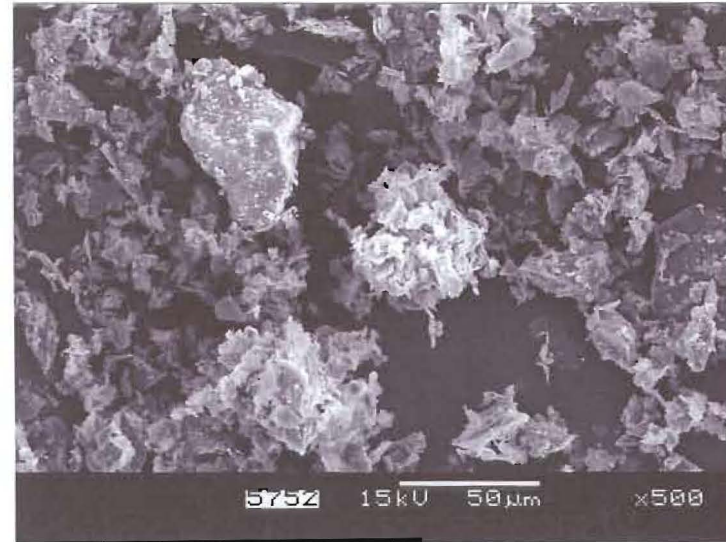


Figure 3-65: Pay Dam Penstock Coarse Tailings, undispersed bulk specimen.

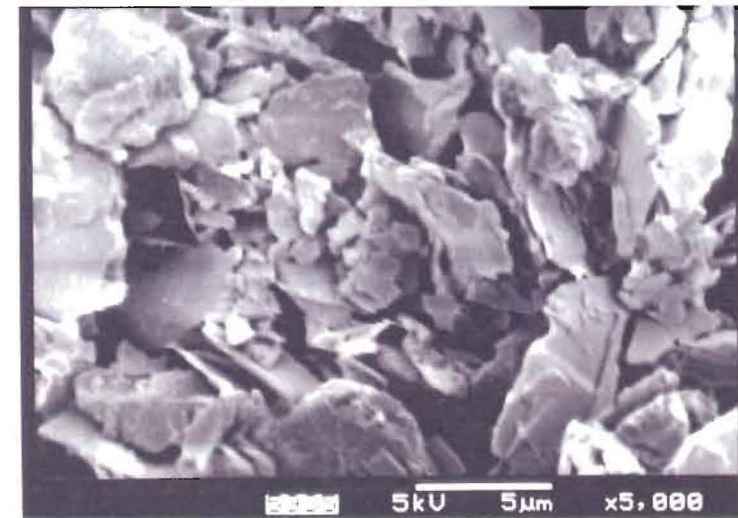
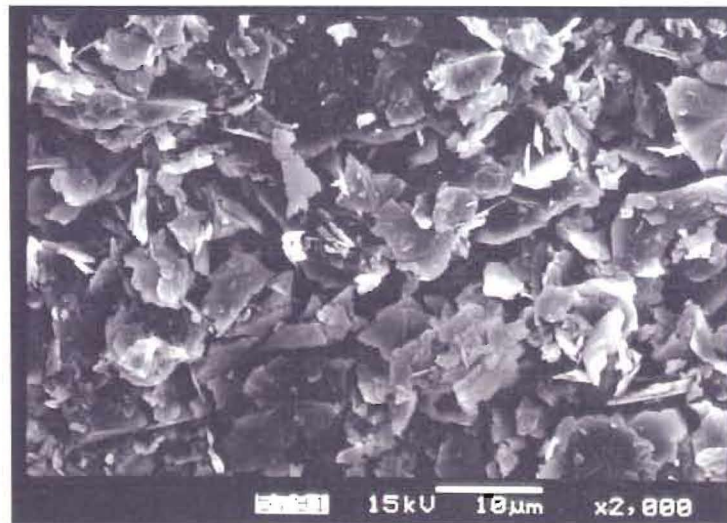
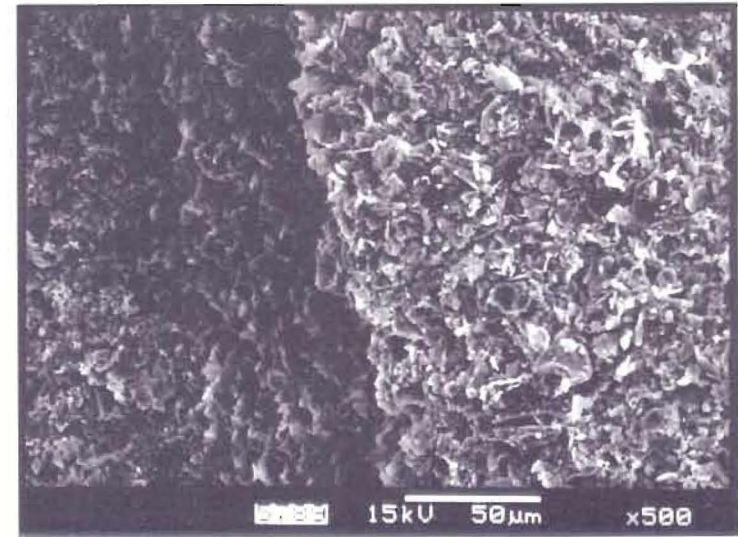
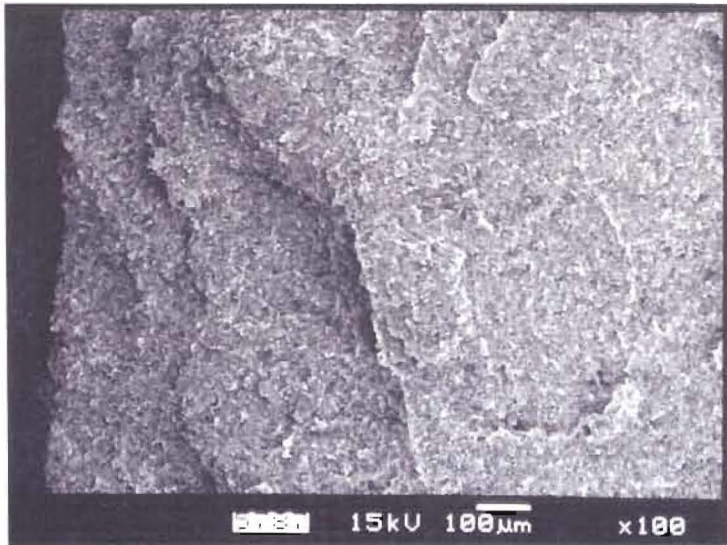


Figure 3-66: Pay Dam Penstock Fine Tailings, undisturbed specimen.

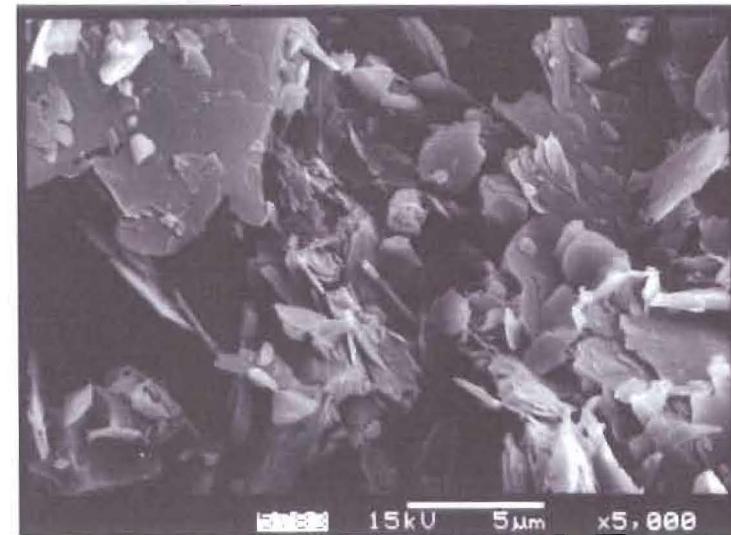
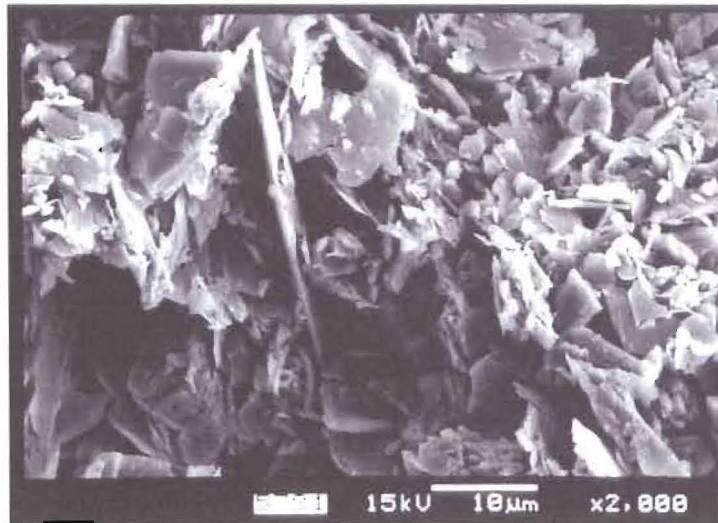
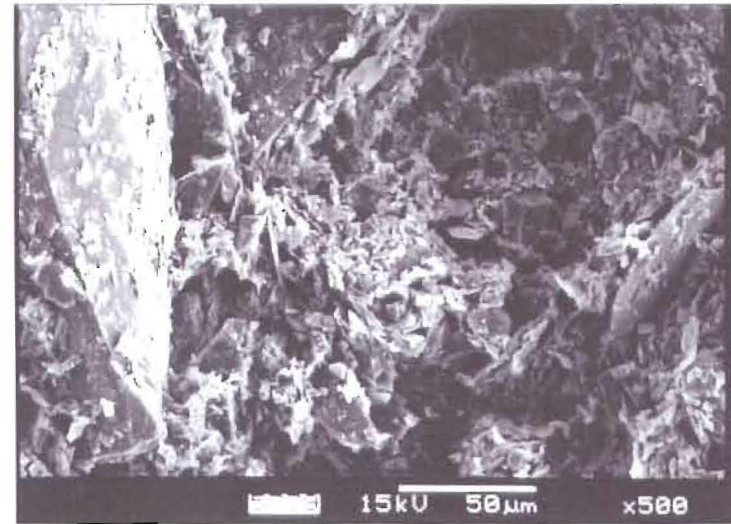
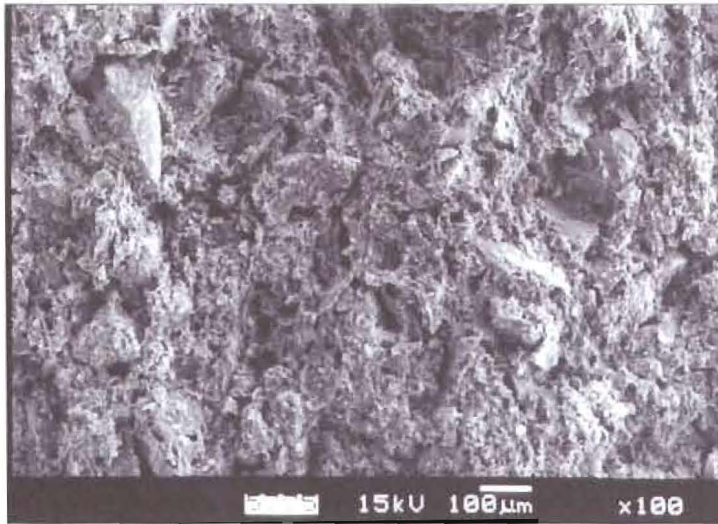


Figure 3-67: Pay Dam Penstock Coarse Tailings, undisturbed specimen.

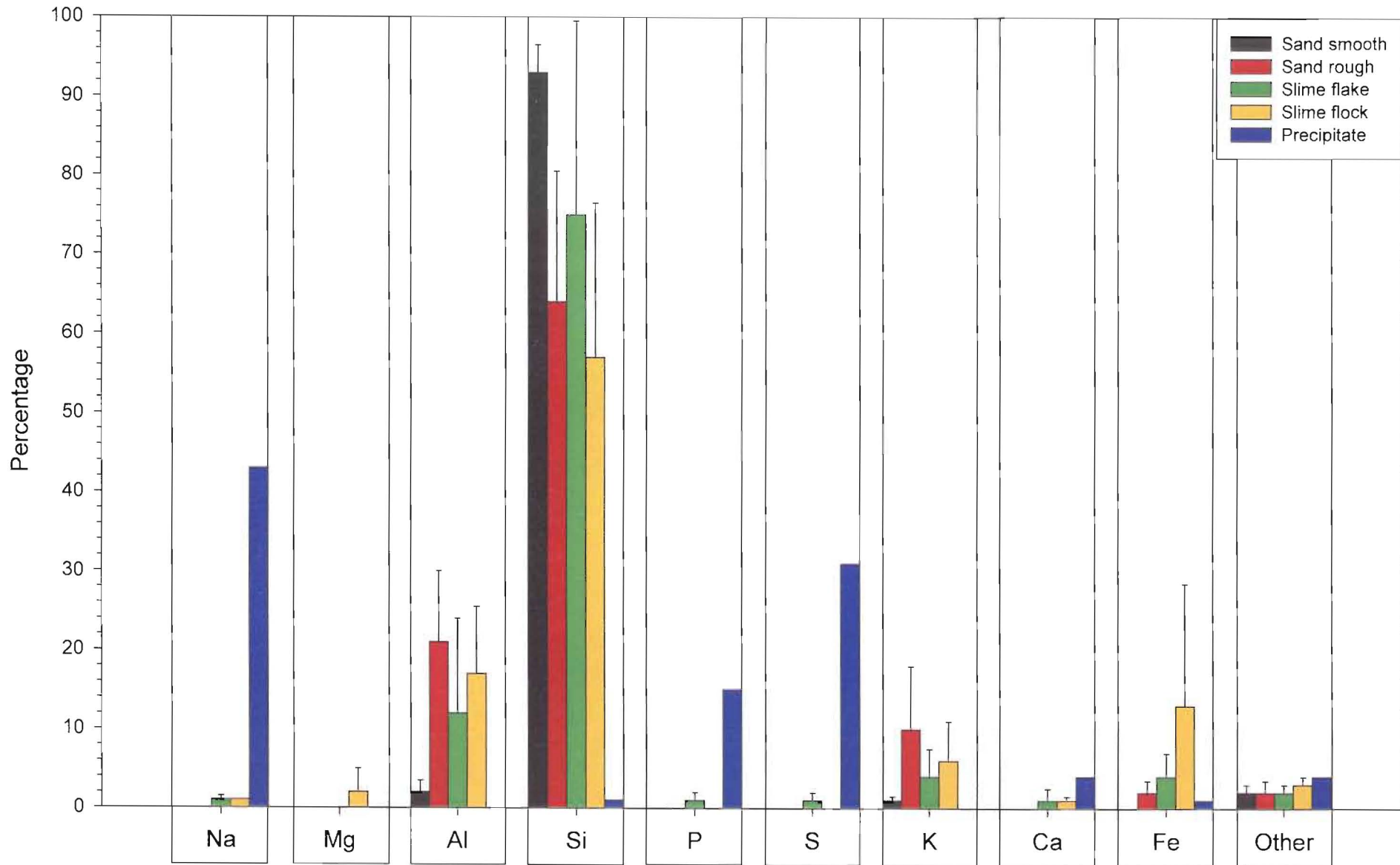


Figure 3-68: Summary of energy dispersive x-ray spectrometry on Mizpah whole tailings.

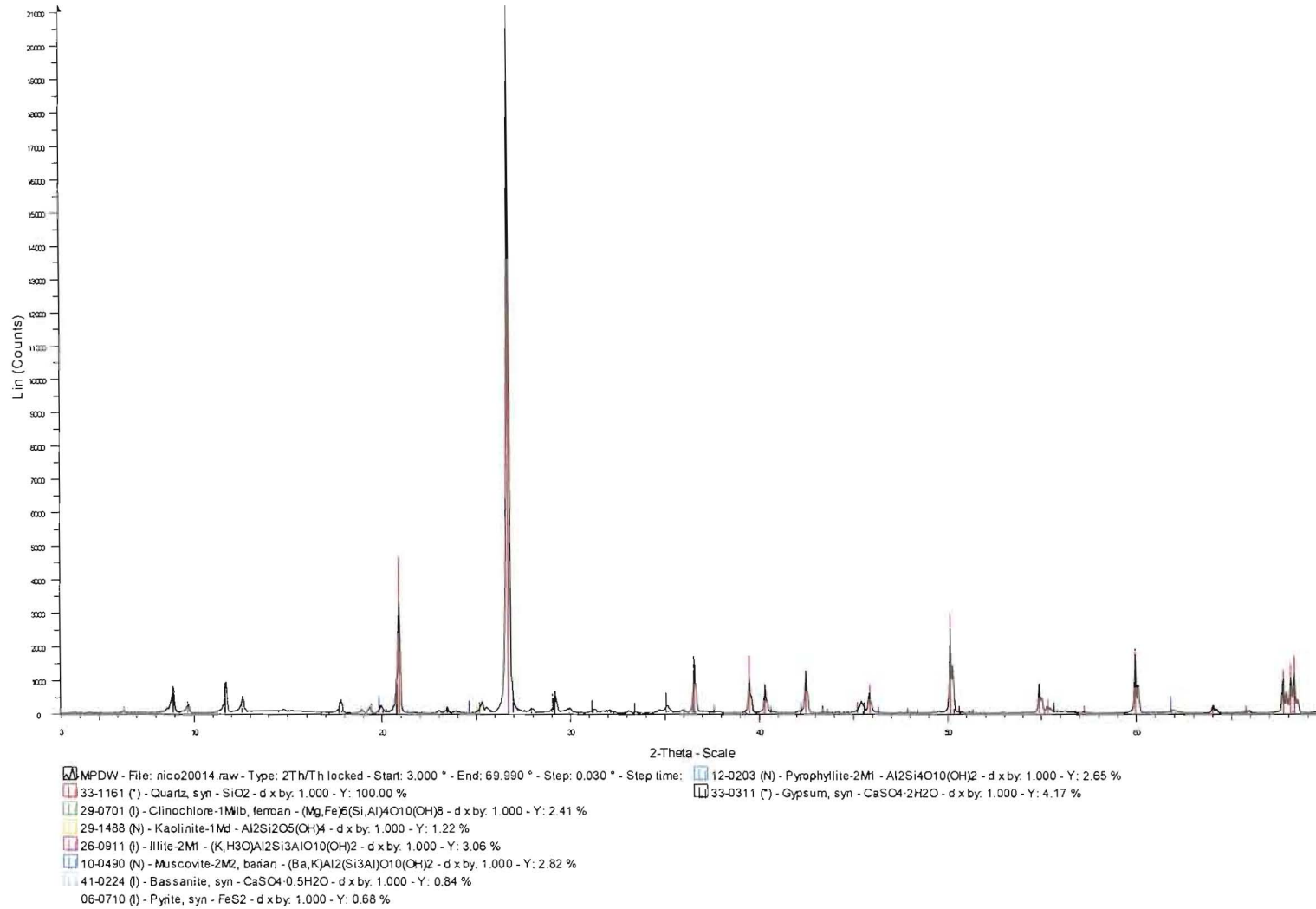


Figure 3-69: XRD spectrograph: Mizpah Whole Tailings.

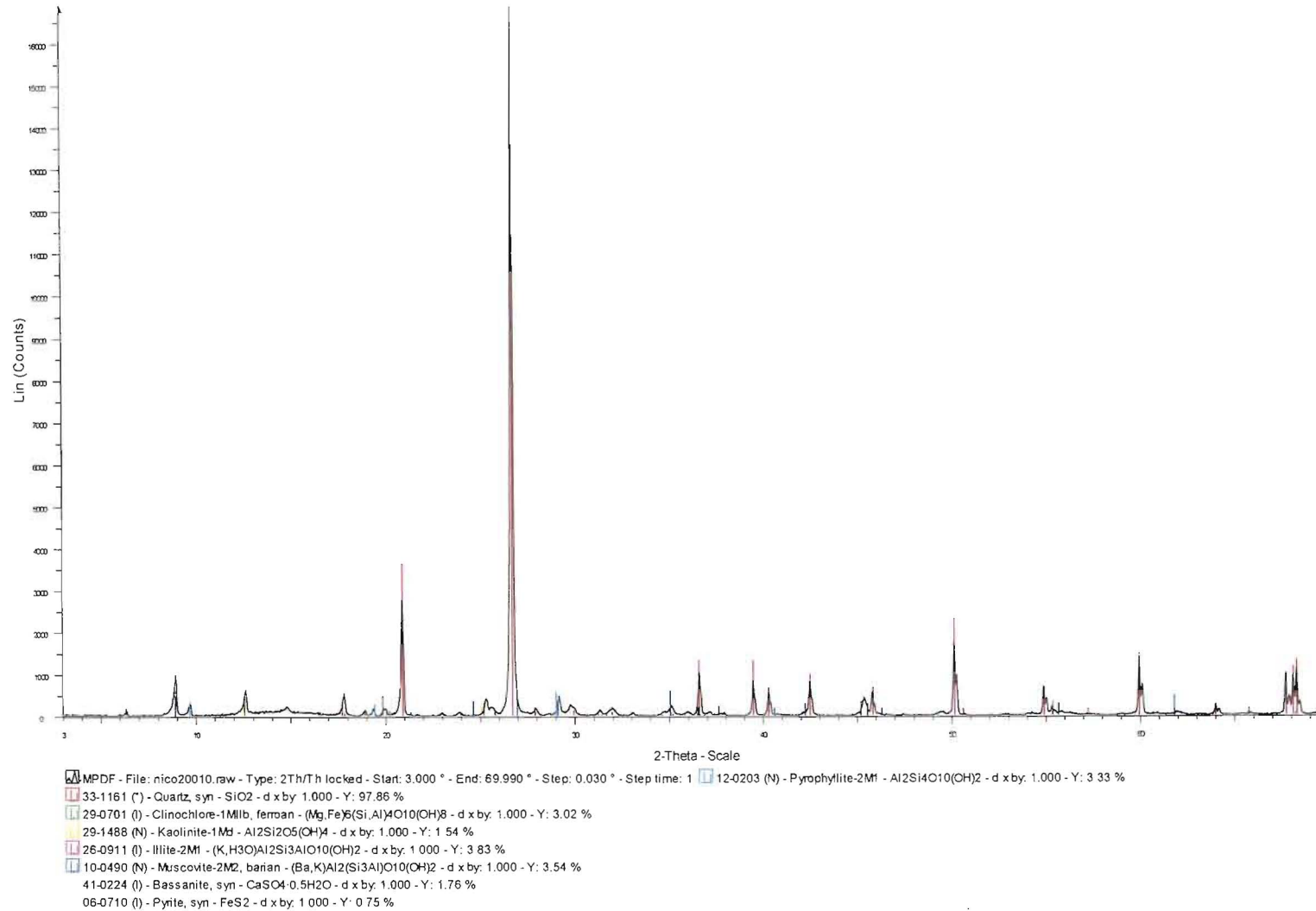


Figure 3-70: XRD spectrograph: Mizpah Pond Fine Tailings.

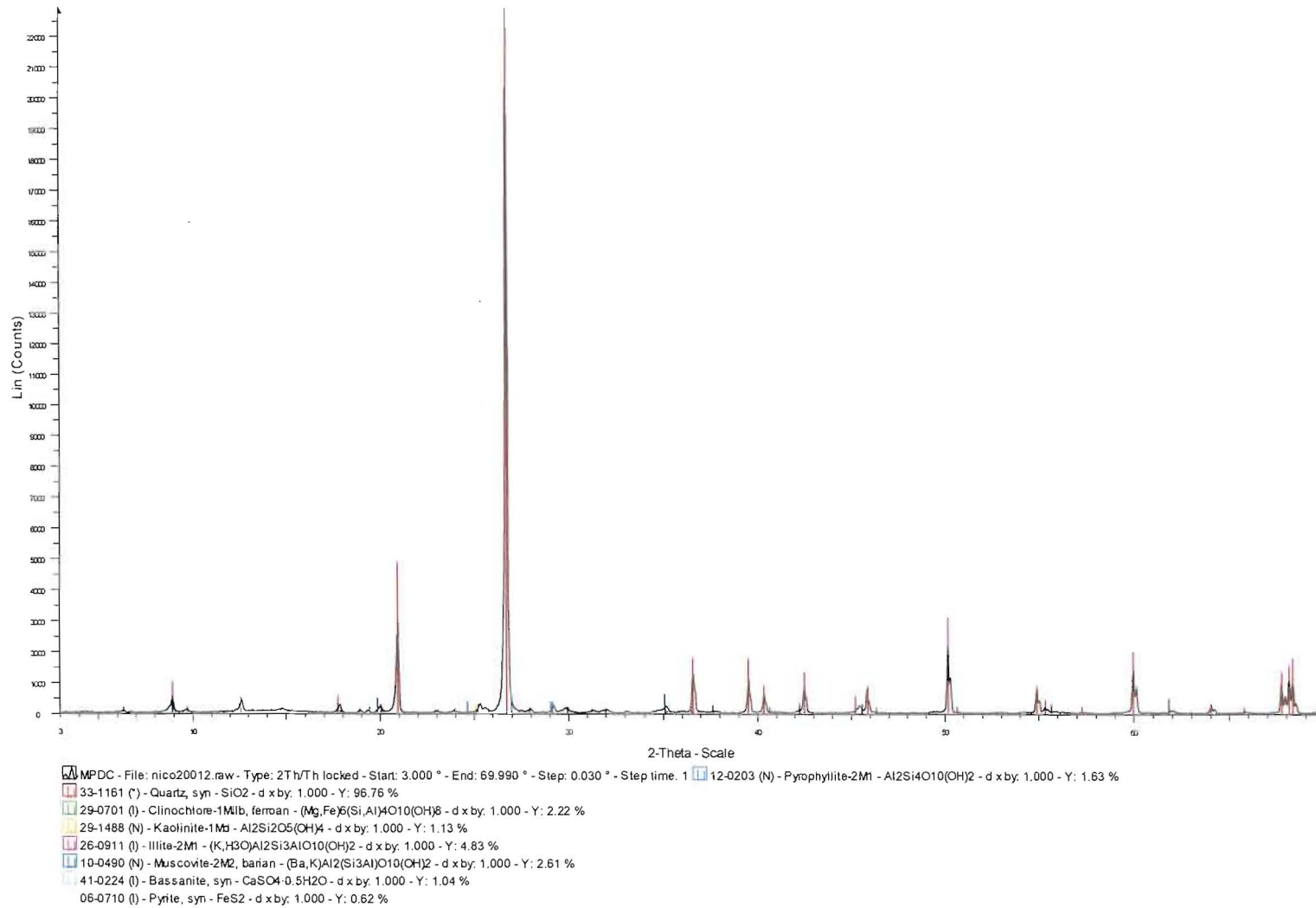


Figure 3-71: XRD spectrograph: Mizpah Pond Coarse Tailings.

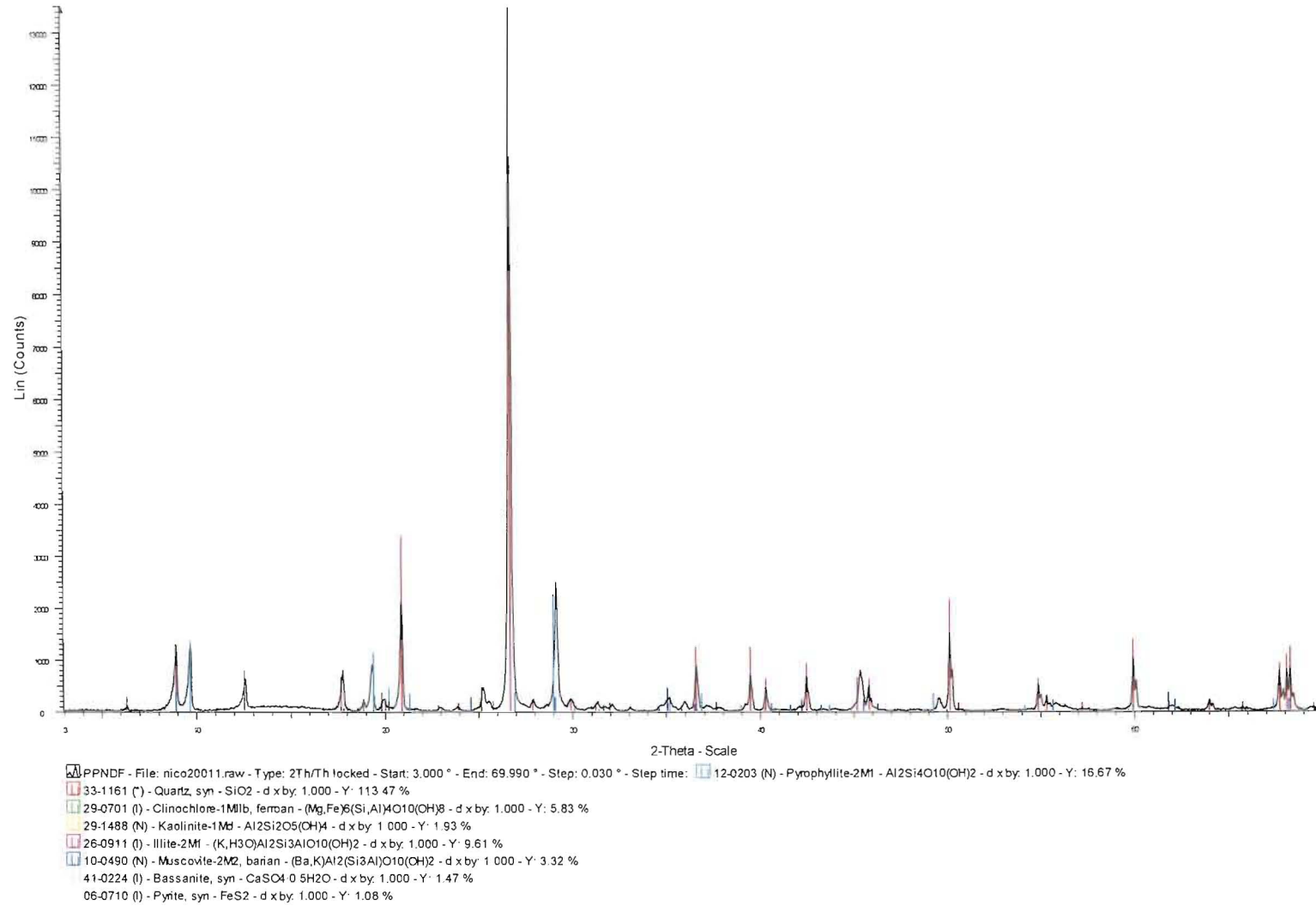


Figure 3-72: XRD spectrograph: Pay Dam Penstock Fine Tailings.

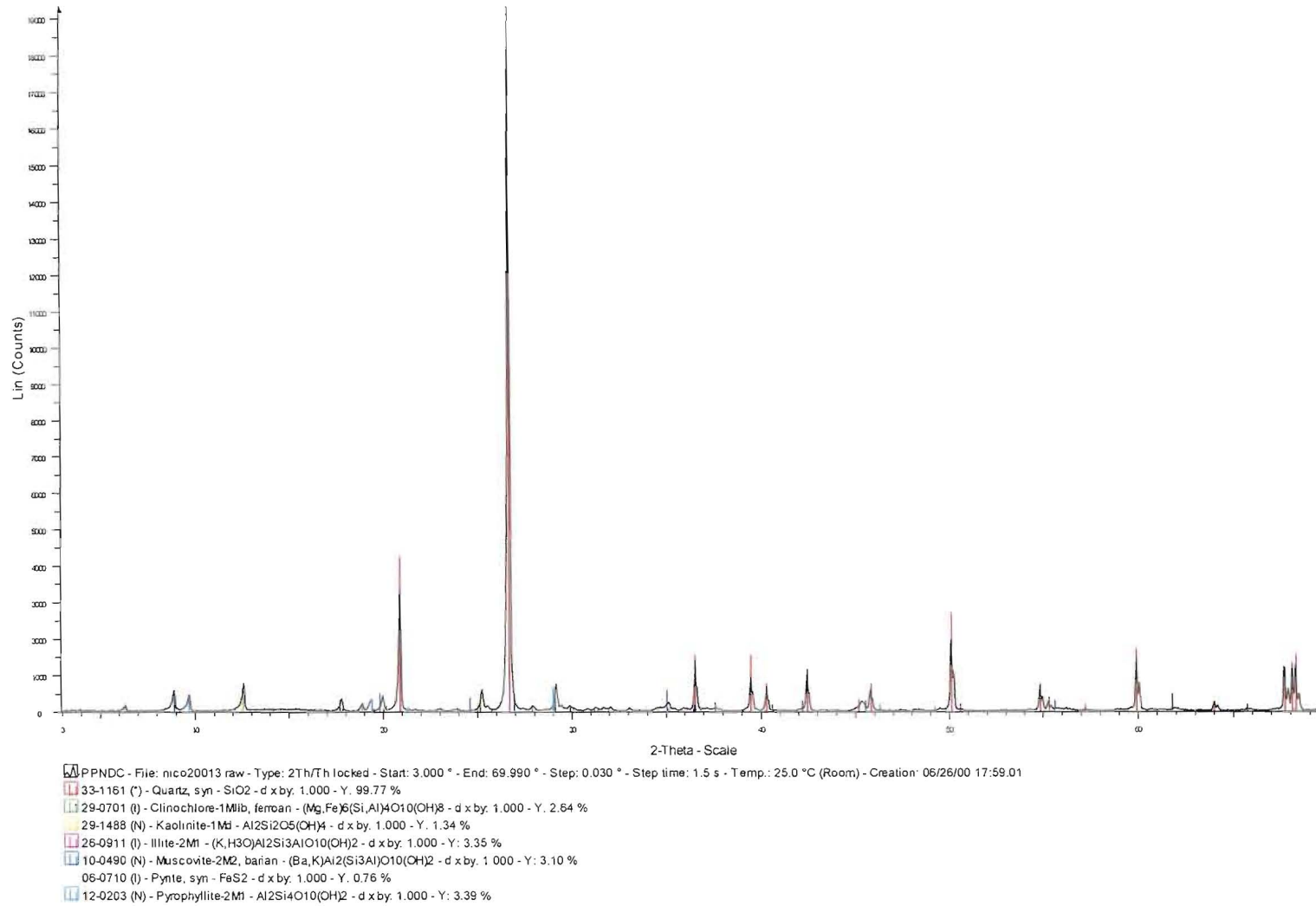


Figure 3-73: XRD spectrograph: Pay Dam Penstock Coarse Tailings.

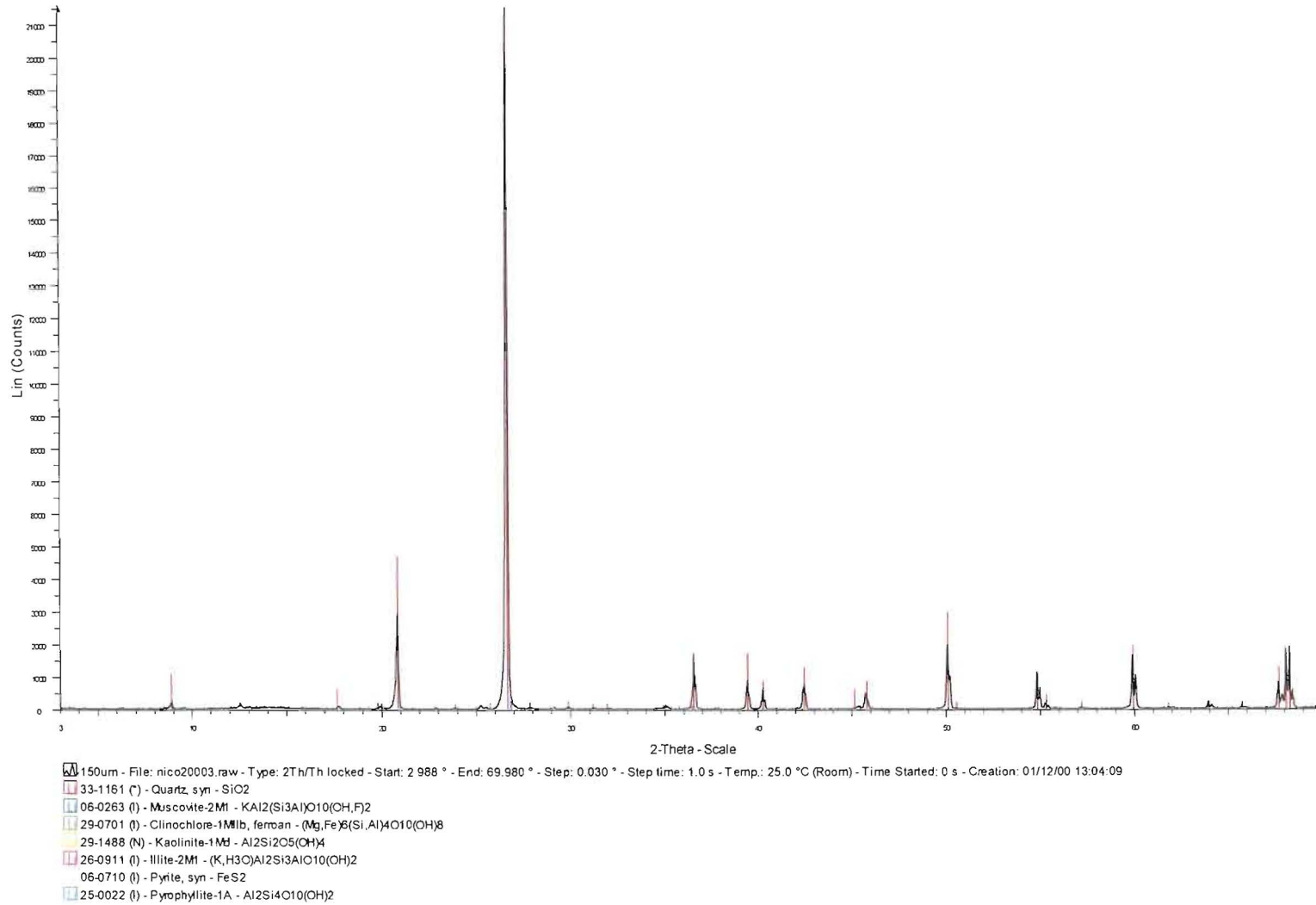


Figure 3-74: XRD spectrograph of Mizpah whole tailings 150 μm fraction.

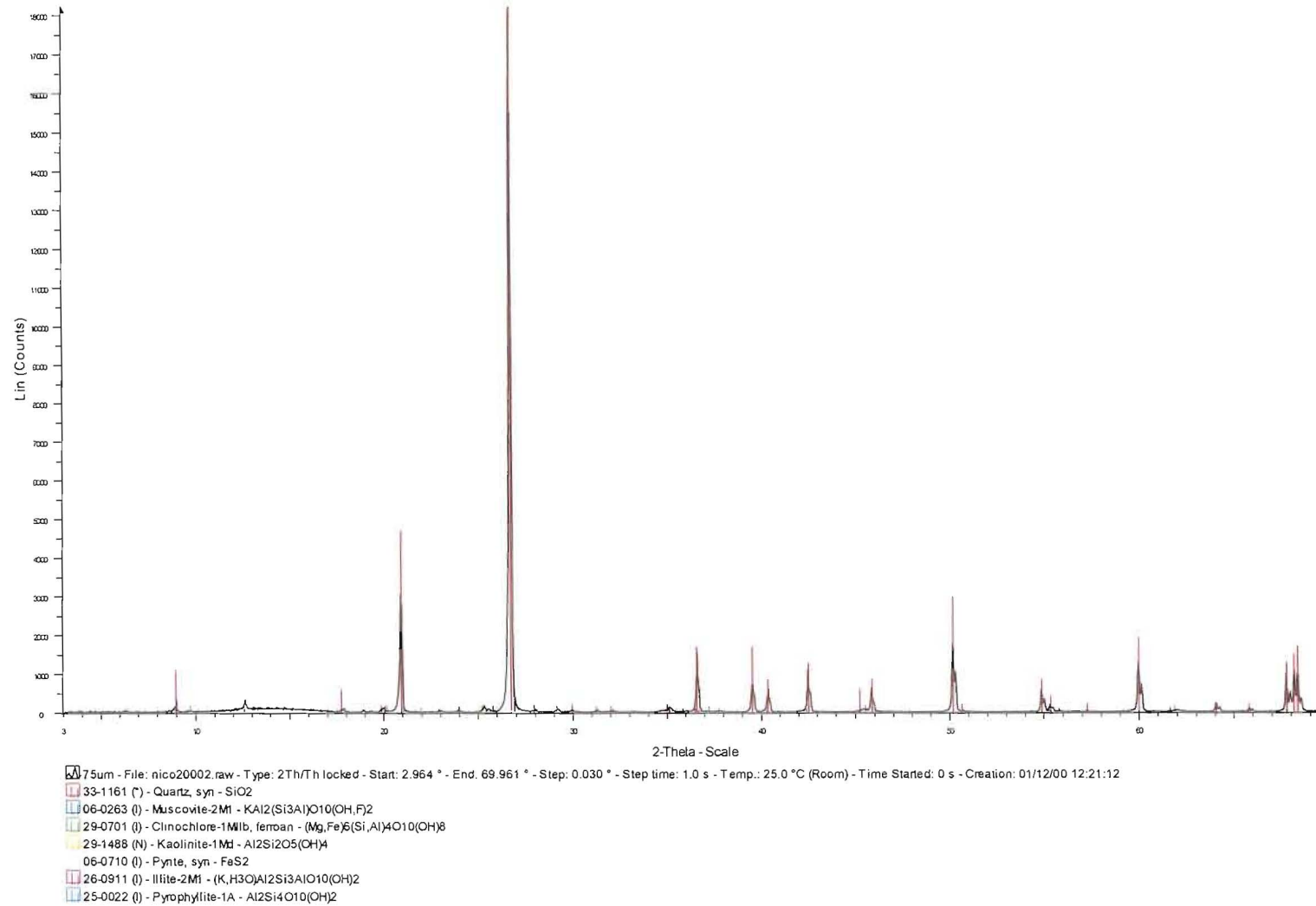


Figure 3-75: XRD spectrograph of Mizpah whole tailings 75 µm fraction.

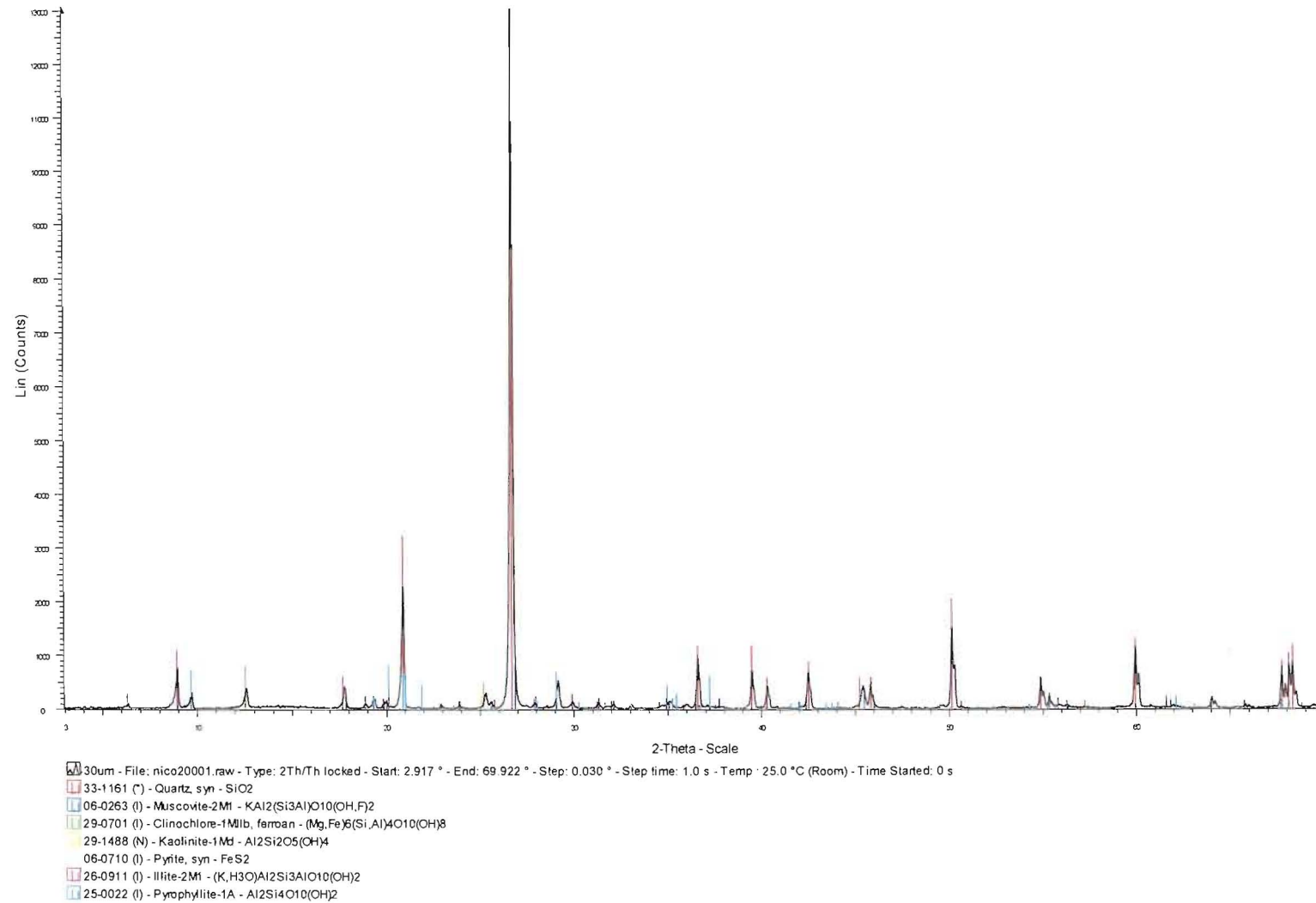


Figure 3-76: XRD spectrograph of Mizpah whole tailings 10 µm fraction.

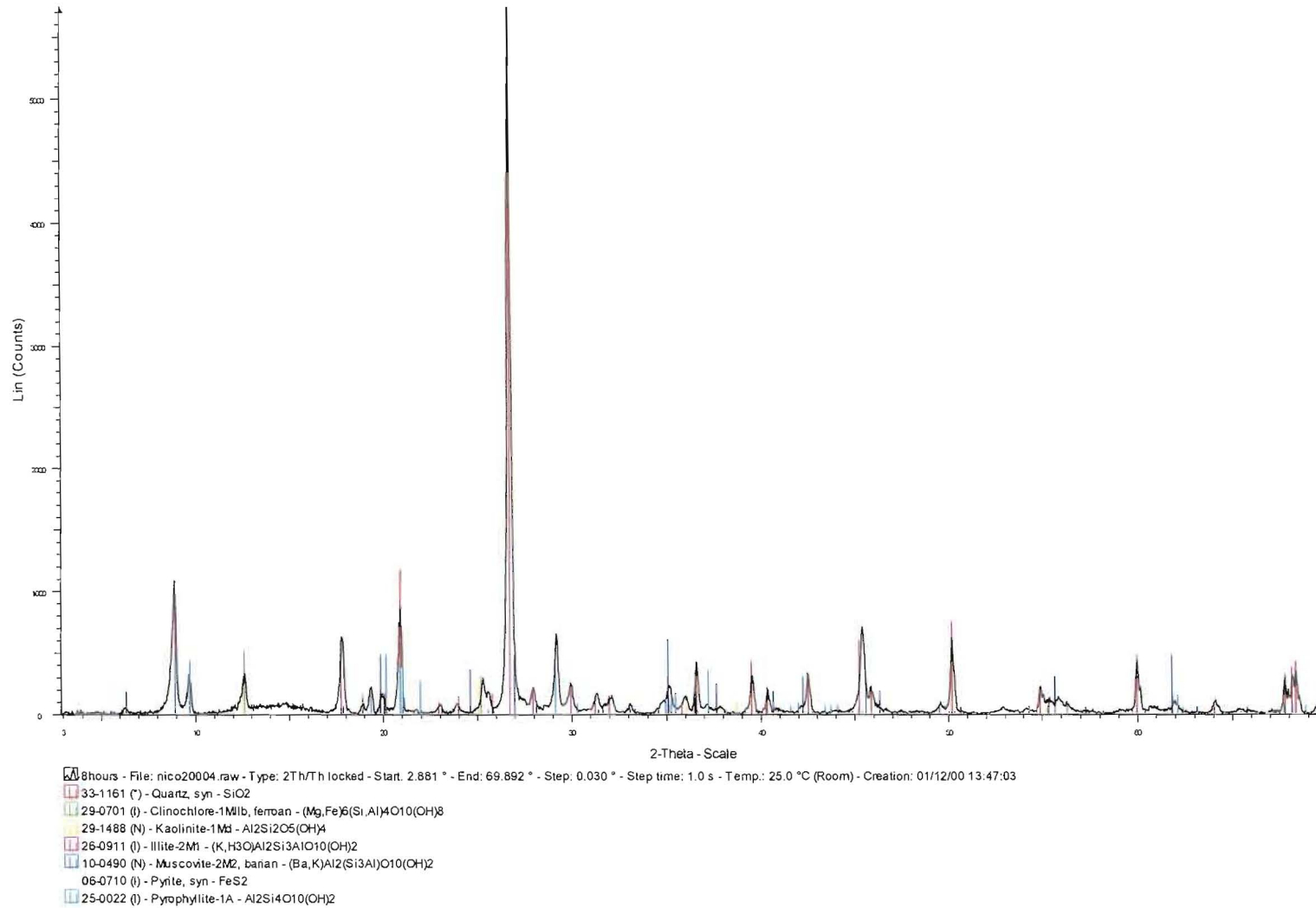


Figure 3-77: XRD spectrograph of Mizpah whole tailings 2 μm fraction.

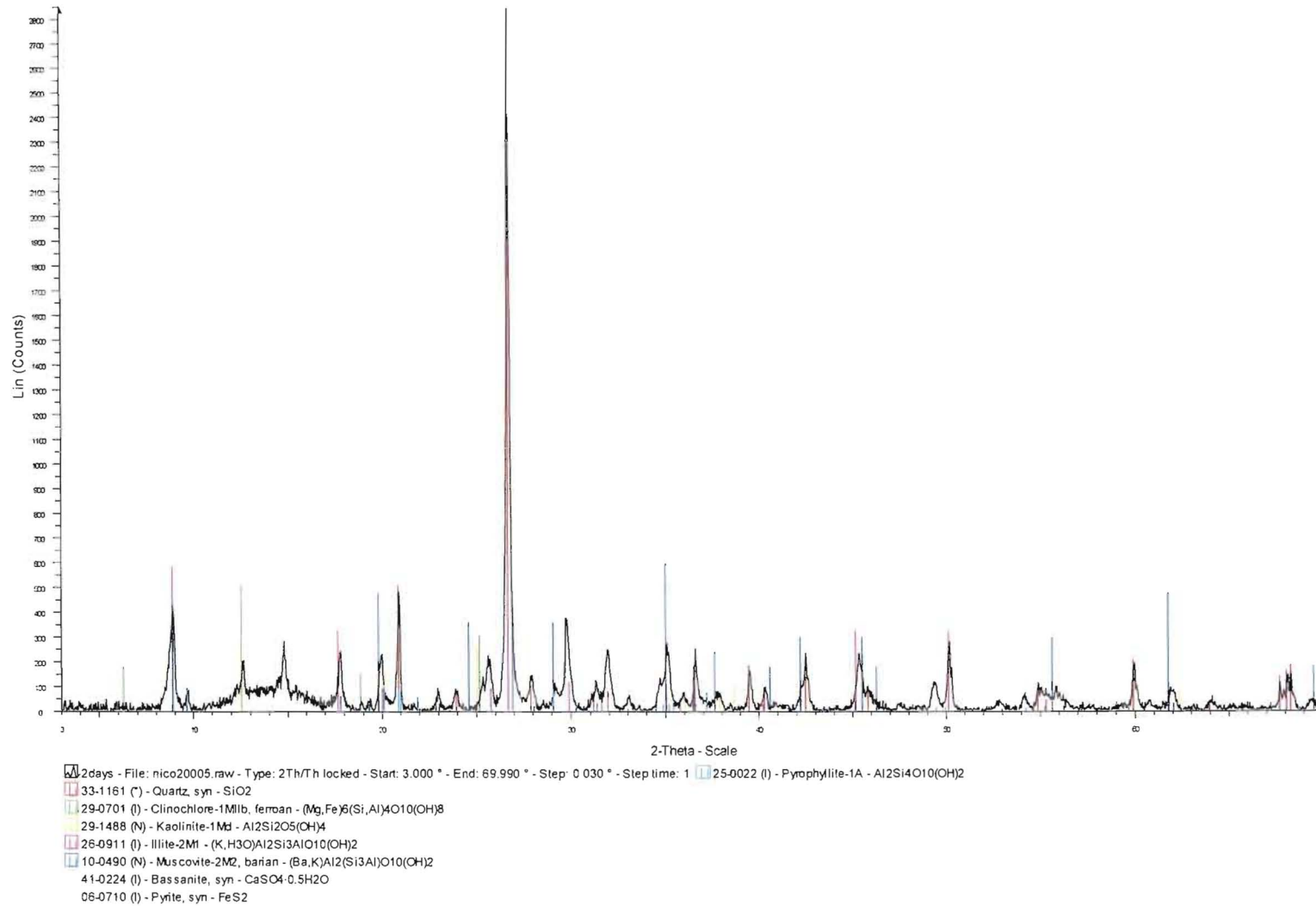


Figure 3-78: XRD spectrograph of Mizpah whole tailings 1 μm fraction.