

Figure 3-34: Grading curves for Mizpah Whole Tailings.

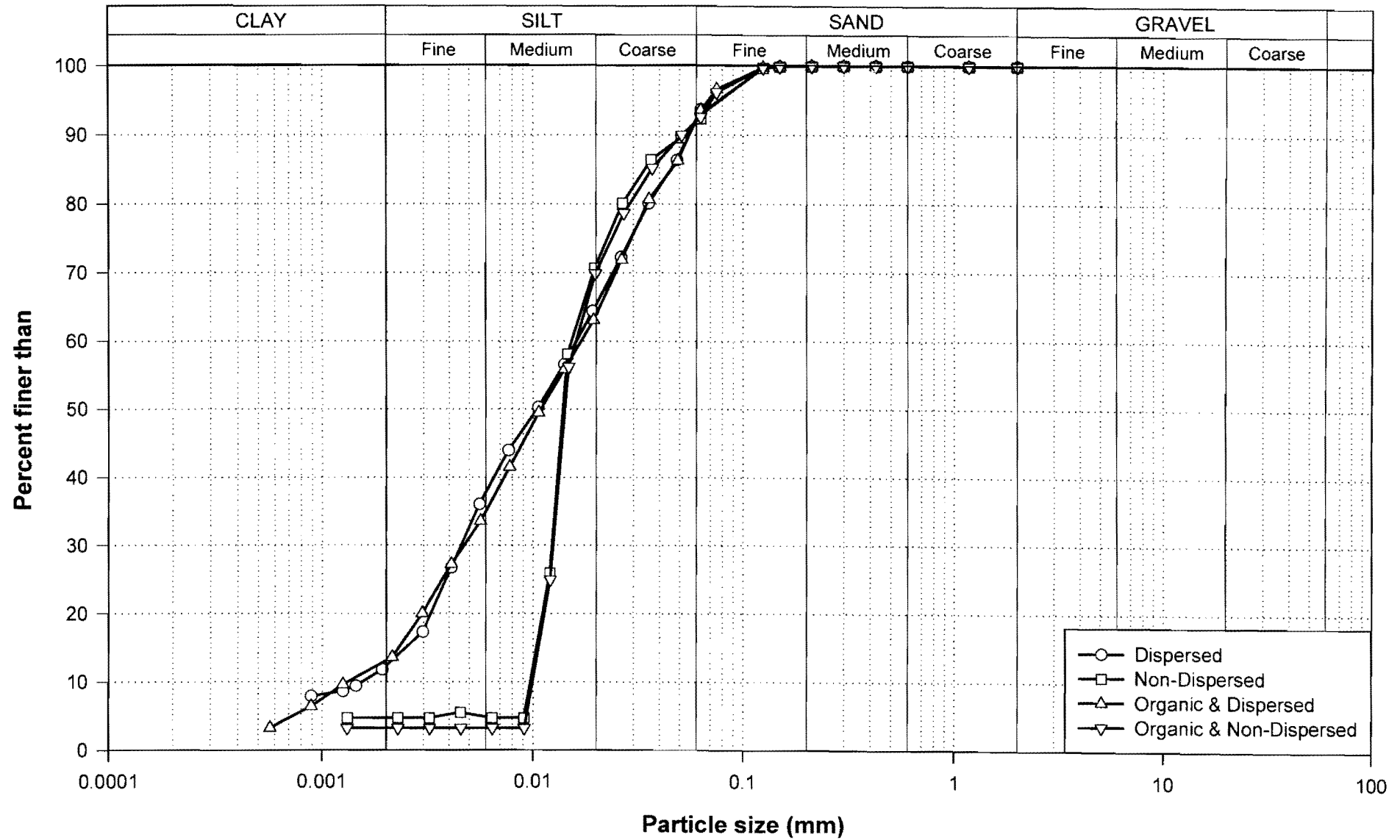


Figure 3-35: Grading curves for Mizpah Pond Fine Tailings.

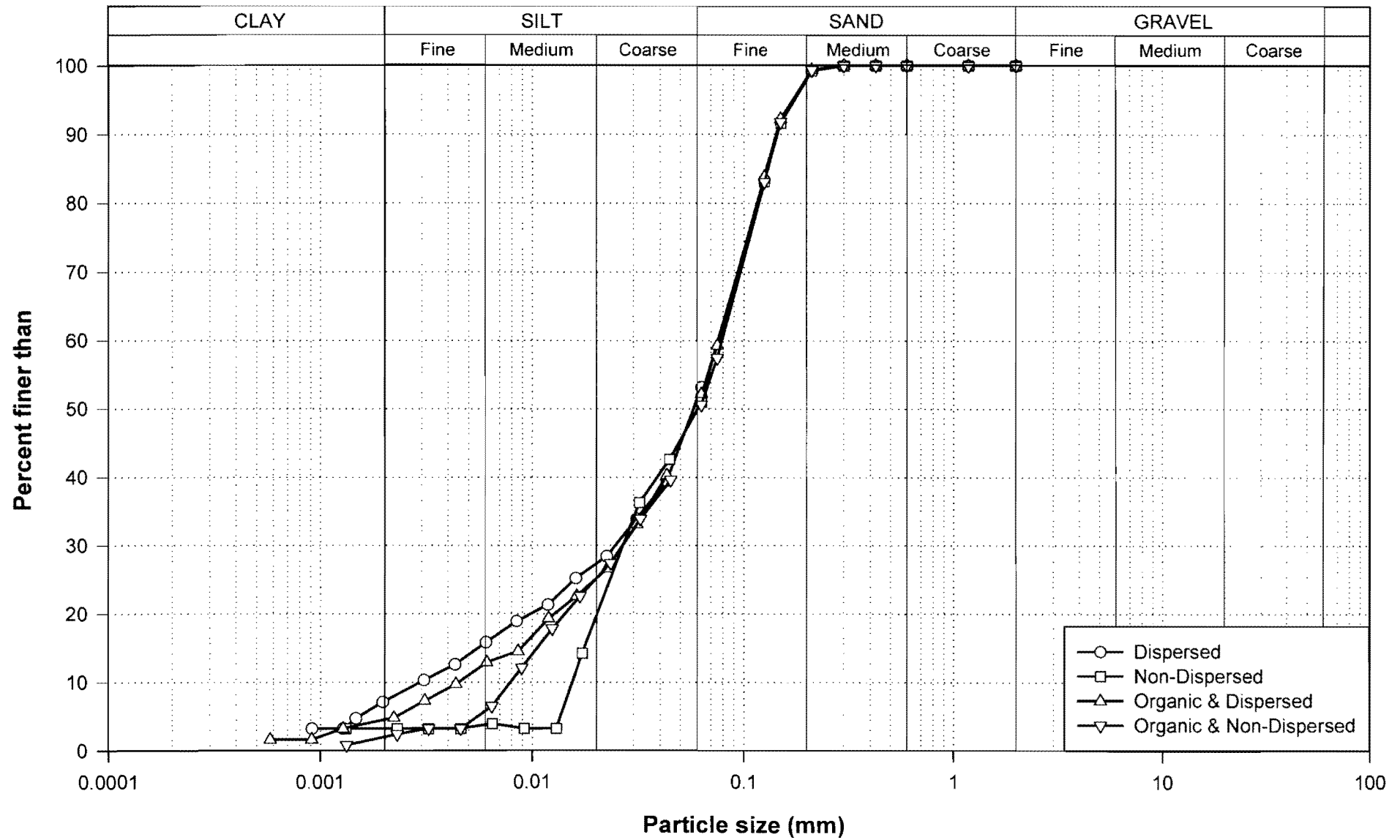


Figure 3-36: Grading curves for Mizpah Pond Coarse Tailings.

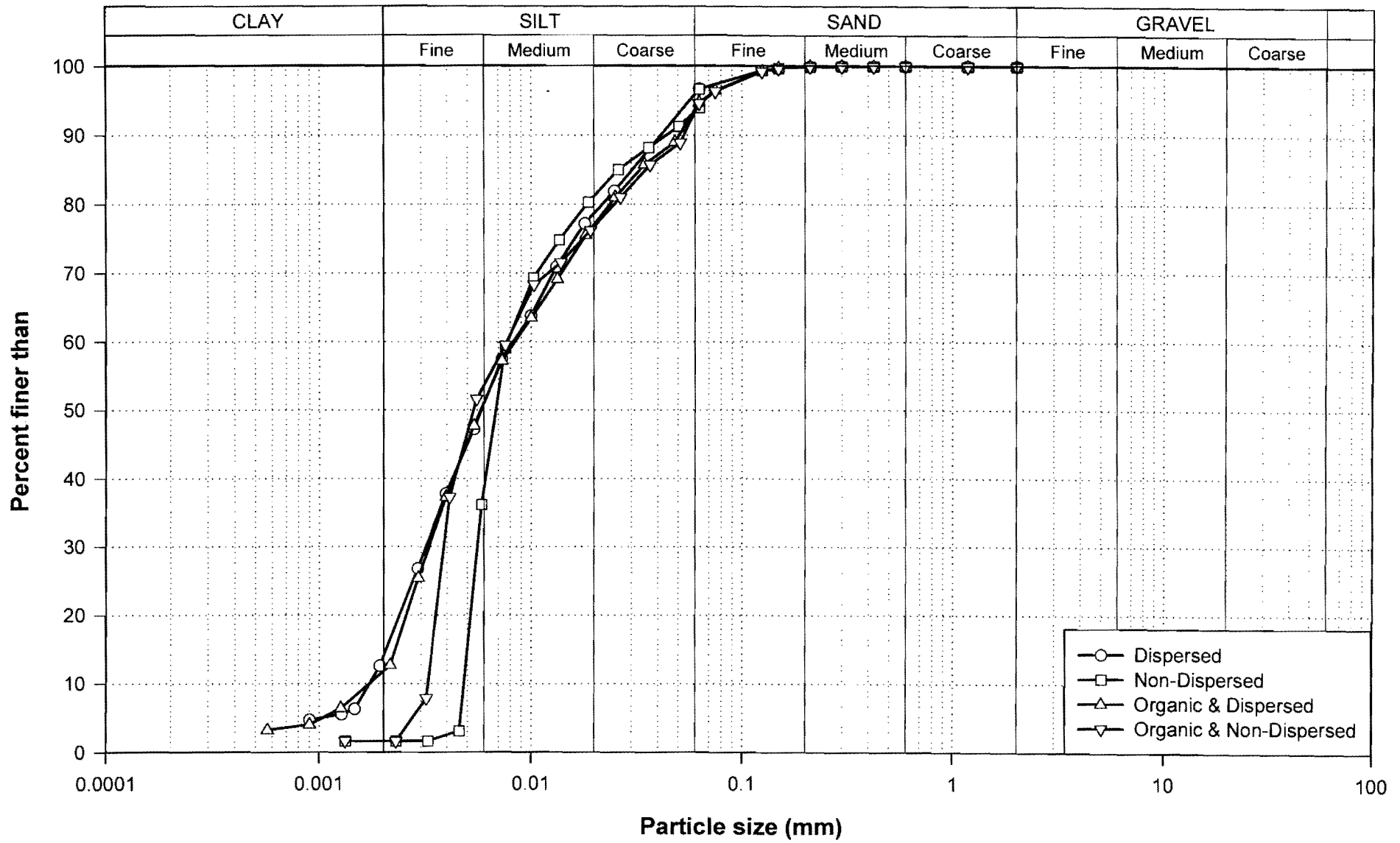


Figure 3-37: Grading curves for Pay Dam Penstock Fine Tailings.

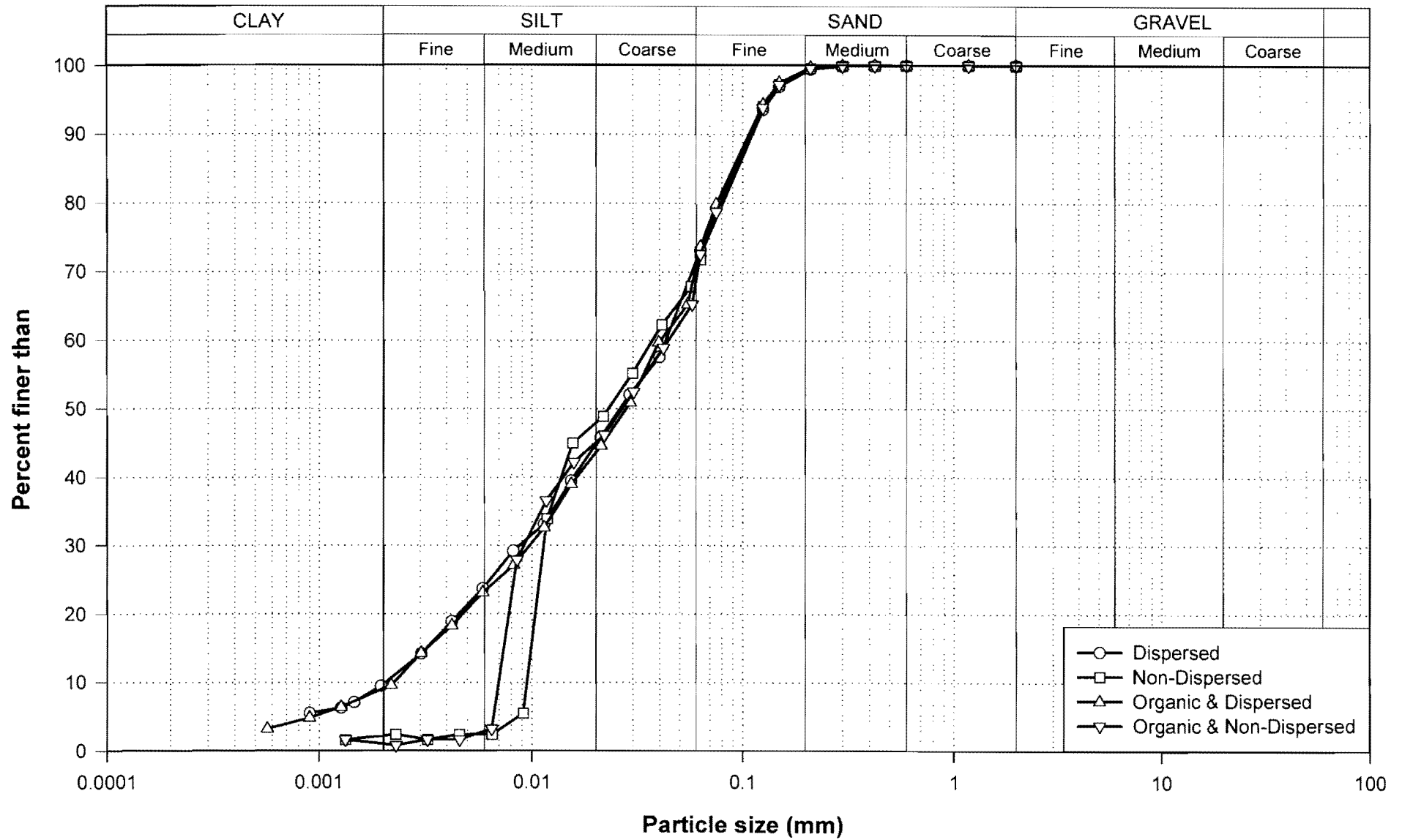


Figure 3-38: Grading curves for Pay Dam Penstock Coarse Tailings.

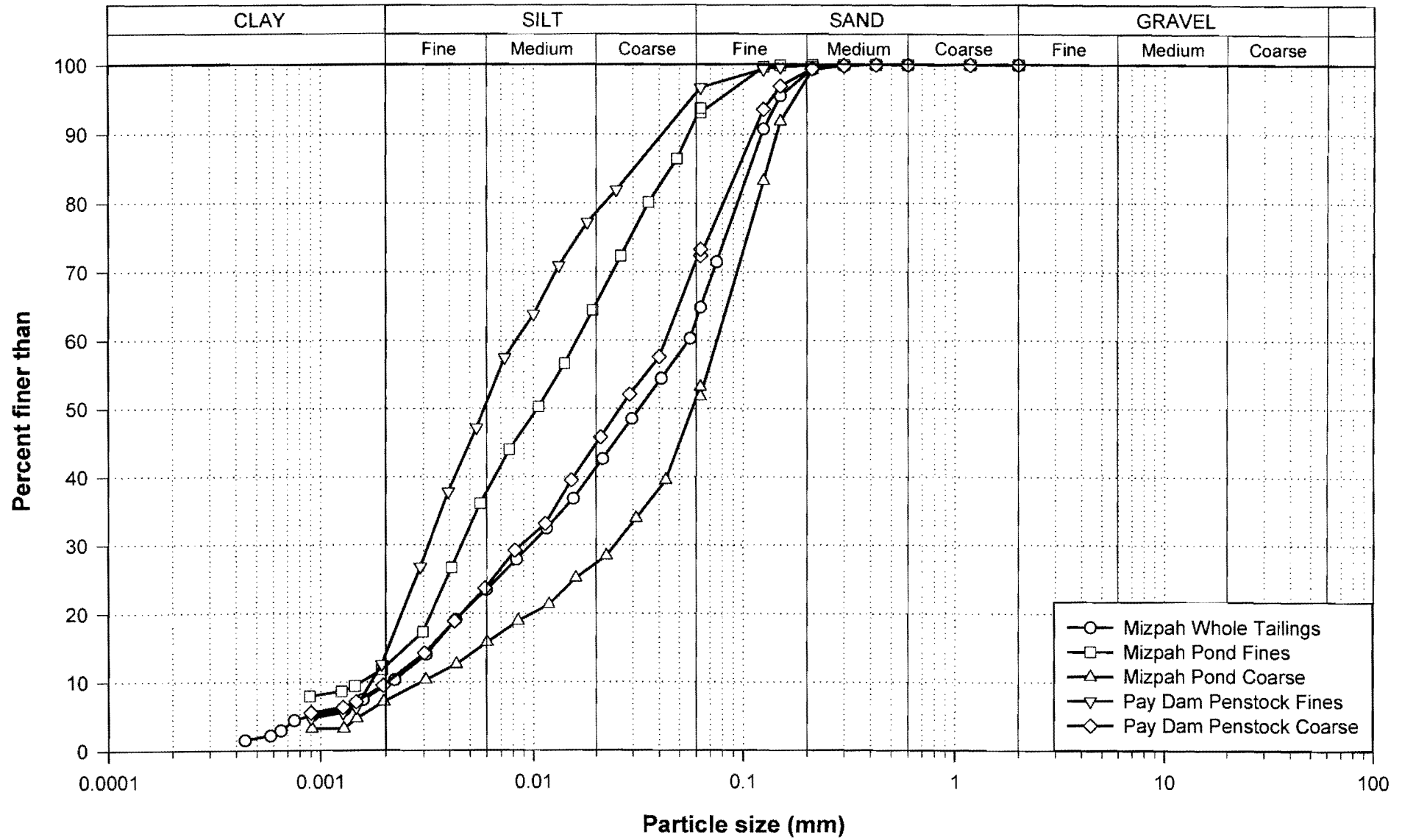


Figure 3-39: Grading curves of dispersed tailings combined.

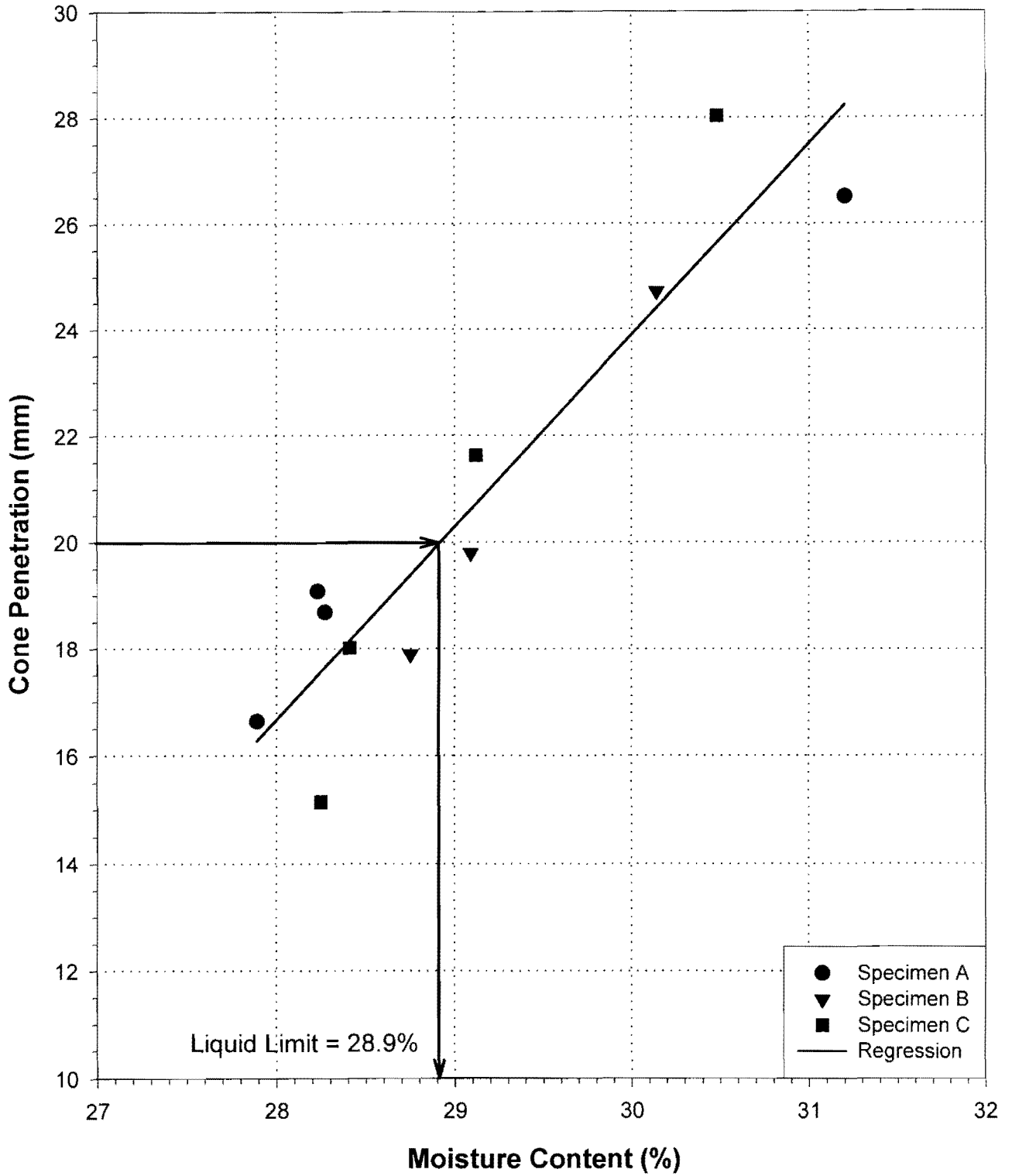


Figure 3-40: Liquid Limit by fall cone test: Mizpah Whole Tailings.

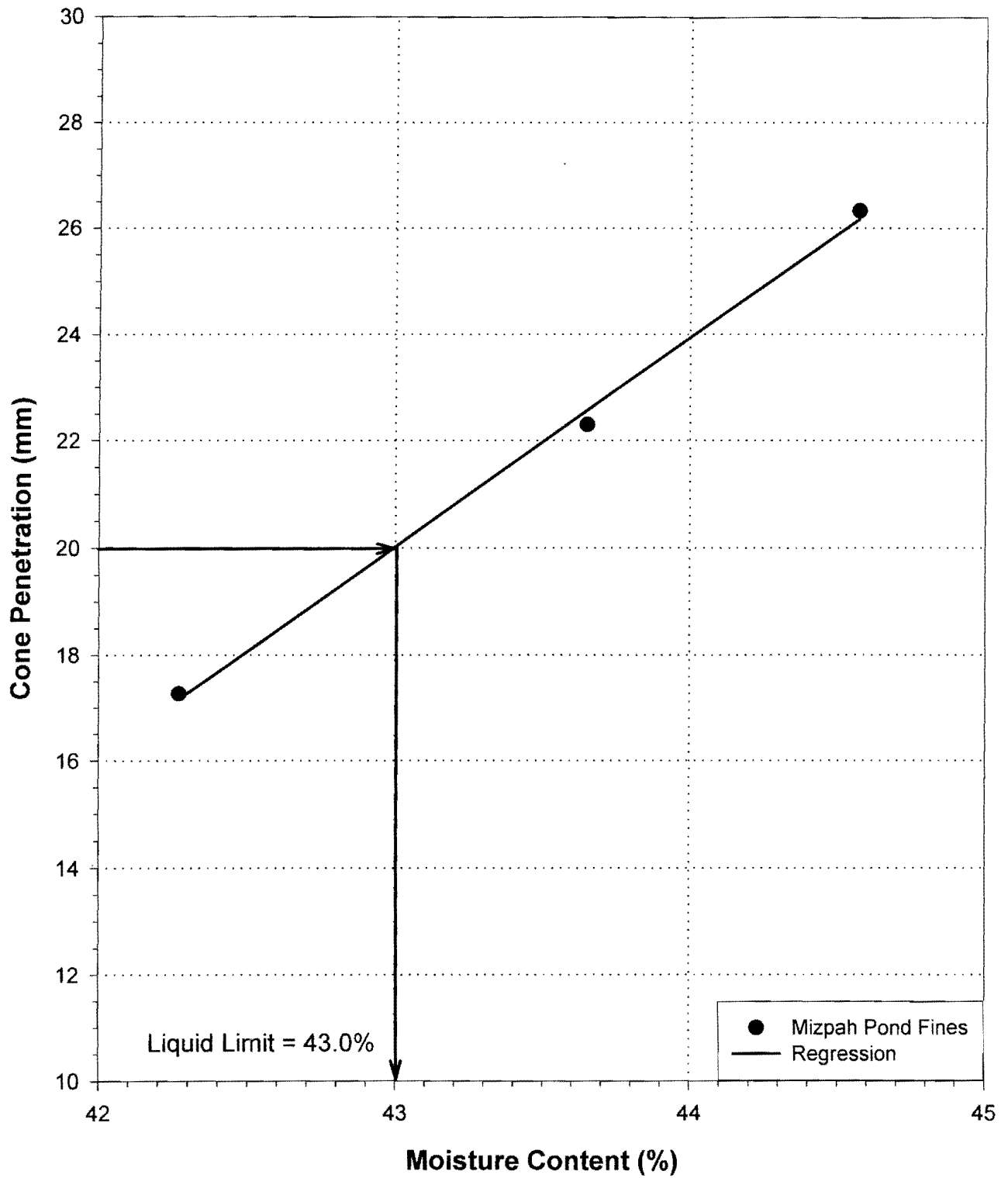


Figure 3-41: Liquid Limit by fall cone test: Mizpah Pond Fine Tailings.



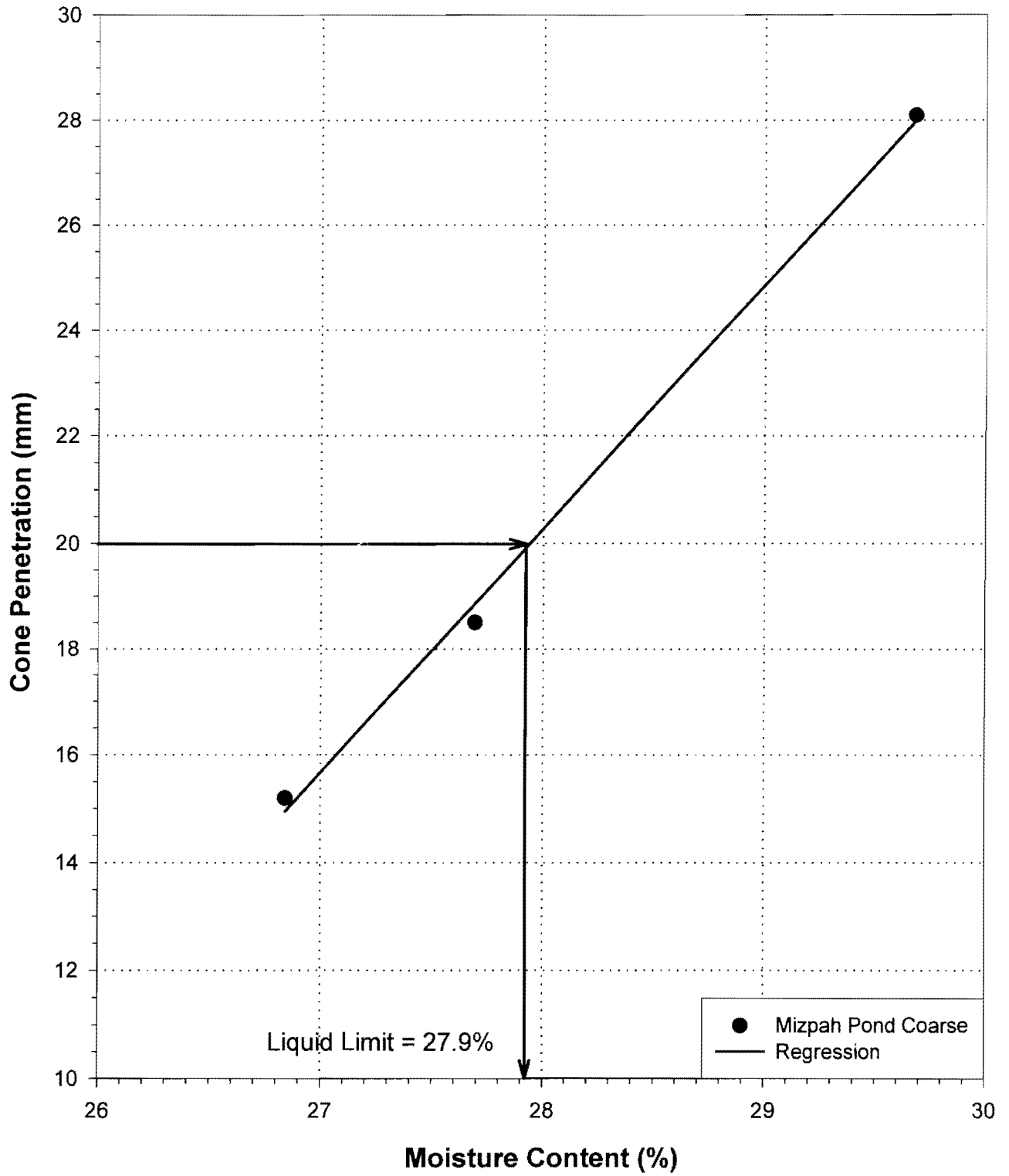


Figure 3-42: Liquid Limit by fall cone test: Mizpah Pond Coarse Tailings.

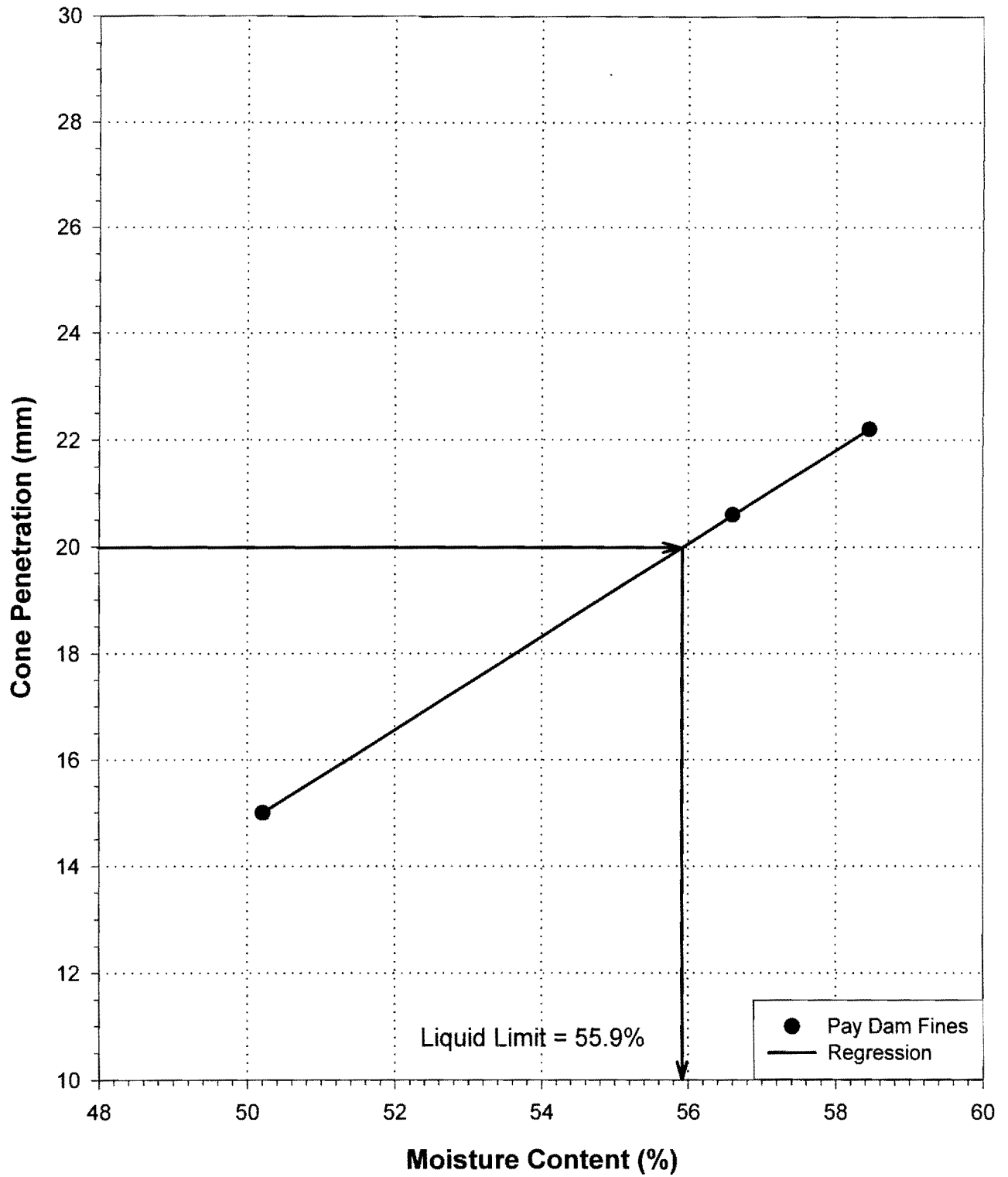


Figure 3-43: Liquid Limit by fall cone test: Pay Dam Penstock Fine Tailings.

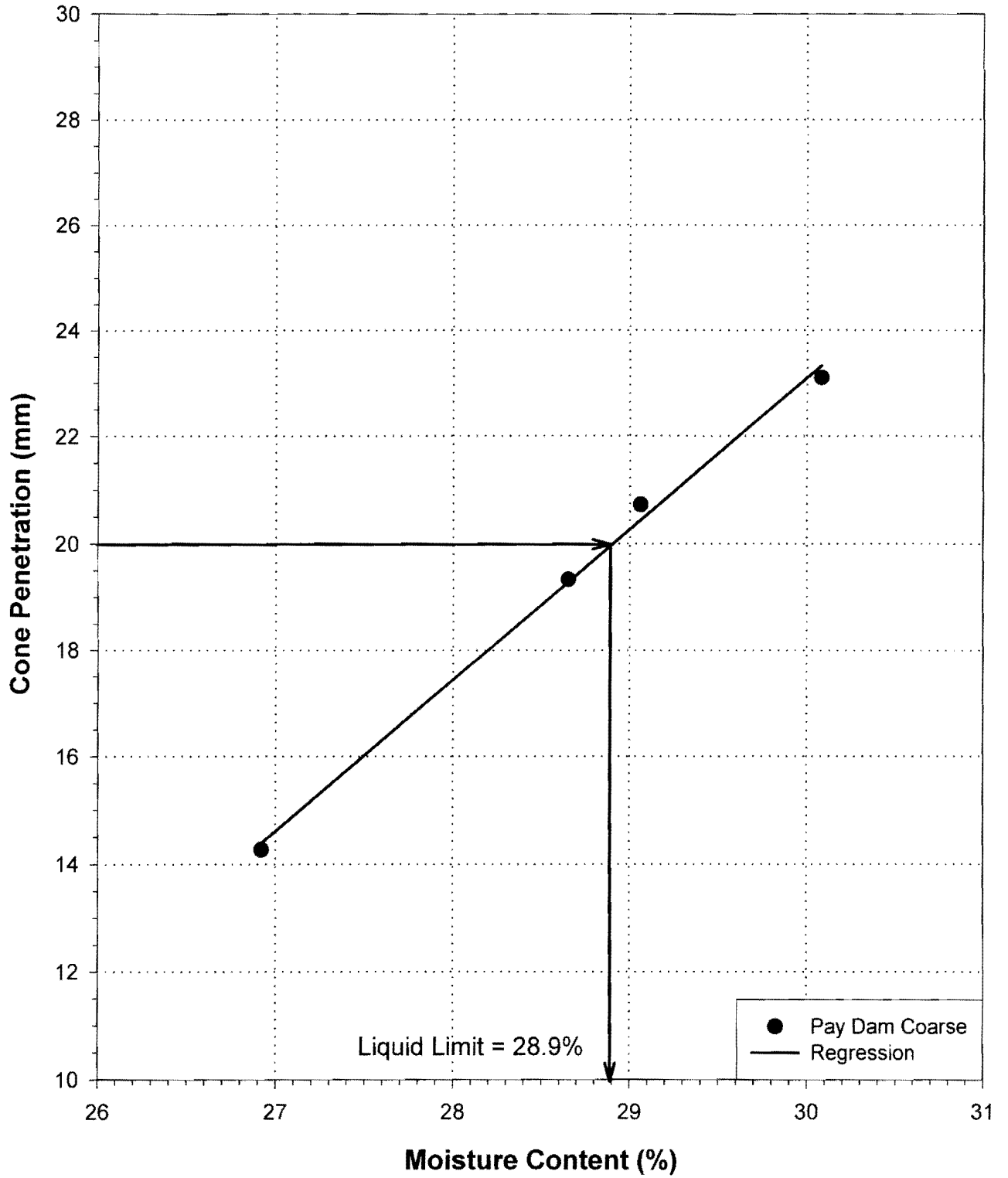


Figure 3-44: Liquid Limit by fall cone test: Pay Dam Penstock Coarse Tailings.

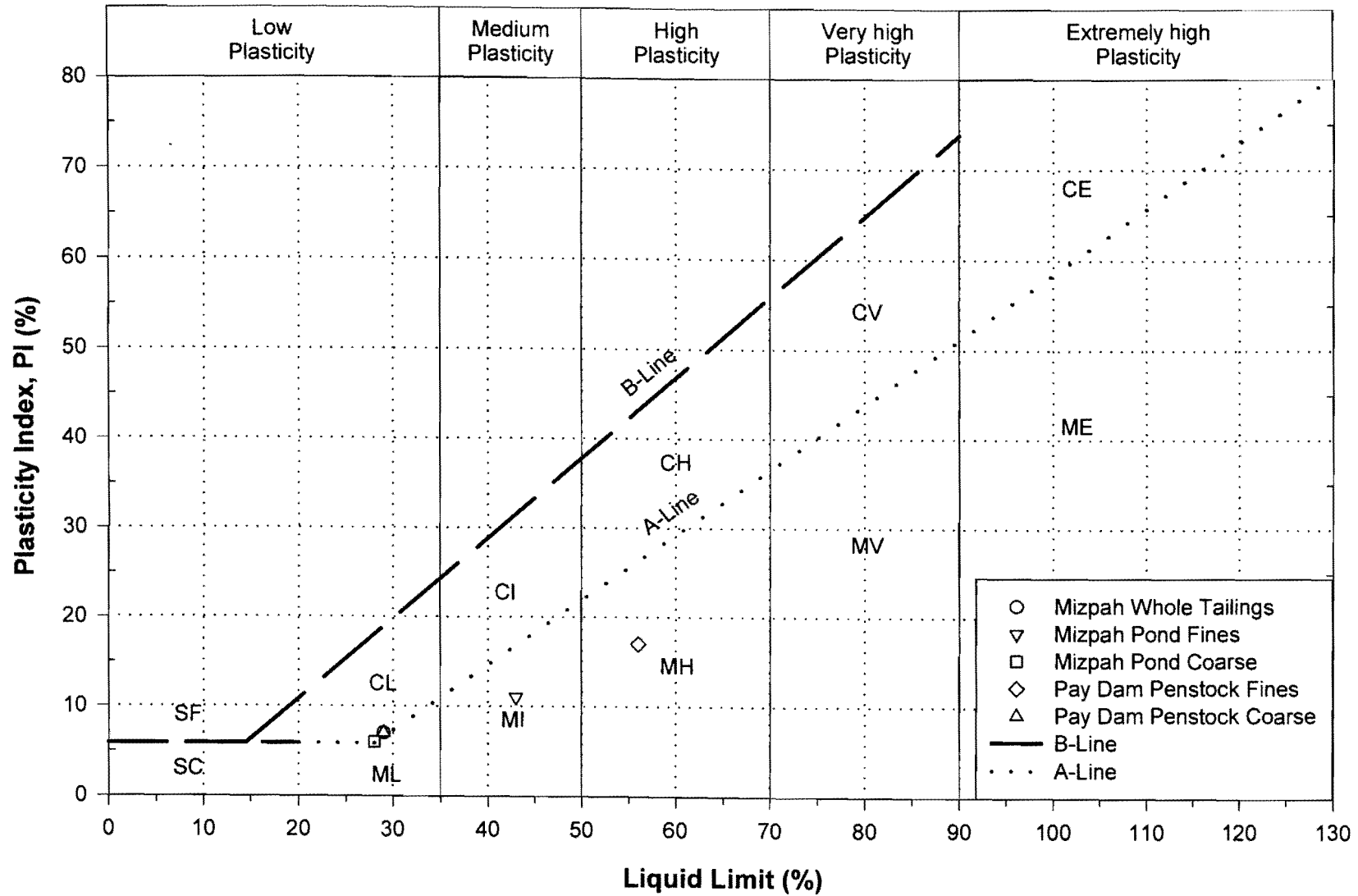
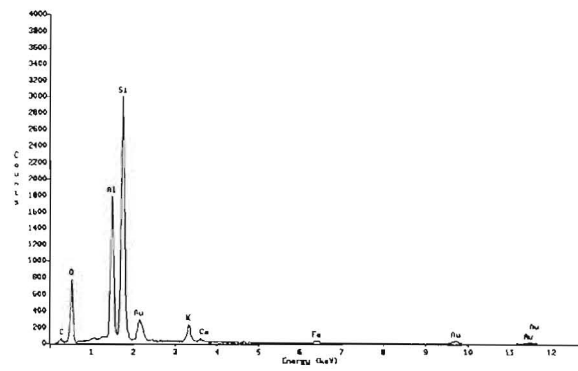
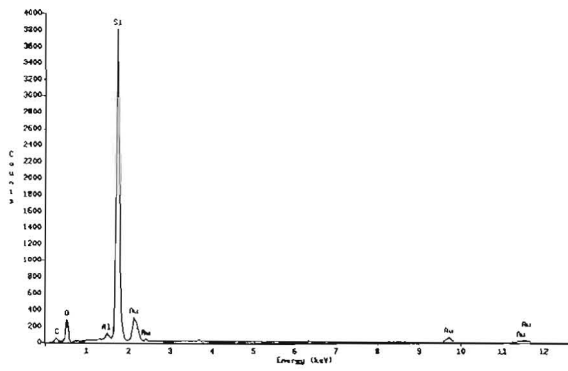
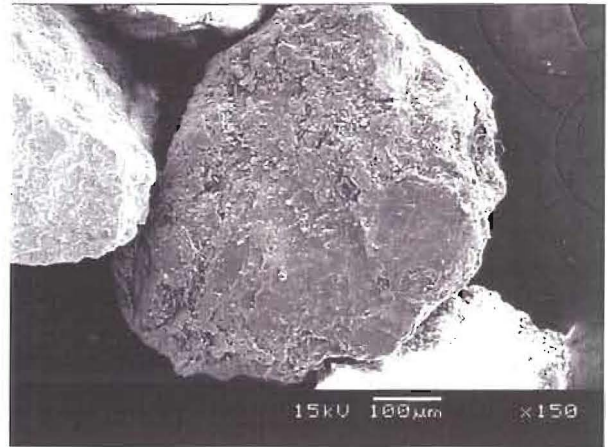
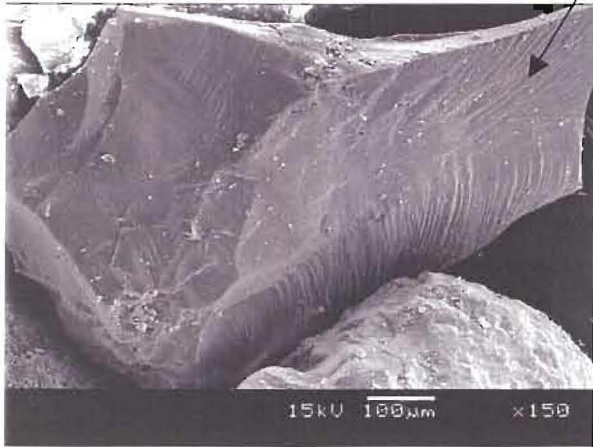
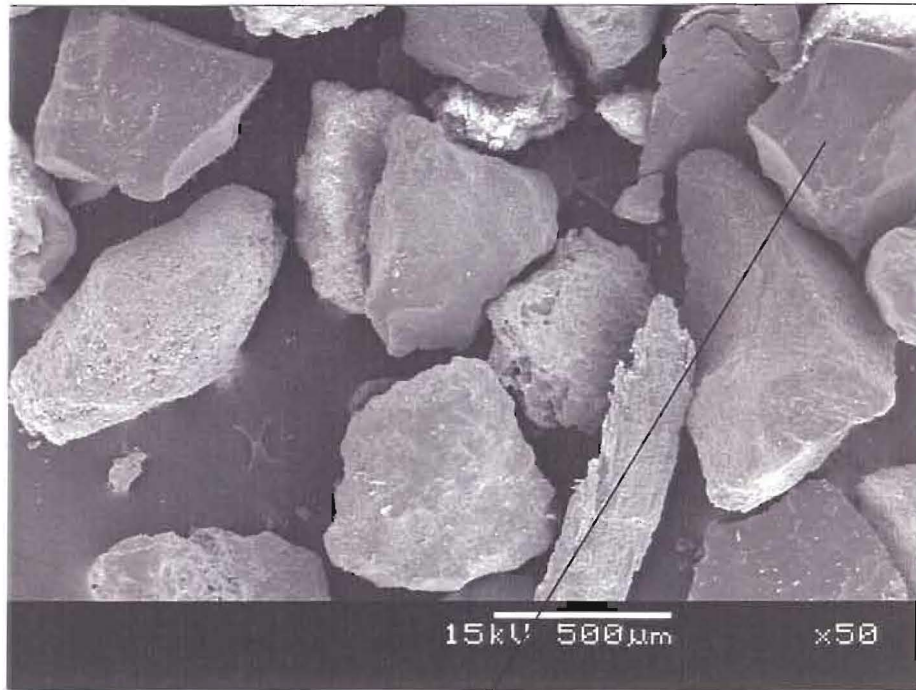


Figure 3-45: Plasticity chart classification of Mizpah and Pay Dam tailings.



**Figure 3-46: Mizpah Whole Tailings, dispersed and retained on the 425 μm sieve.**

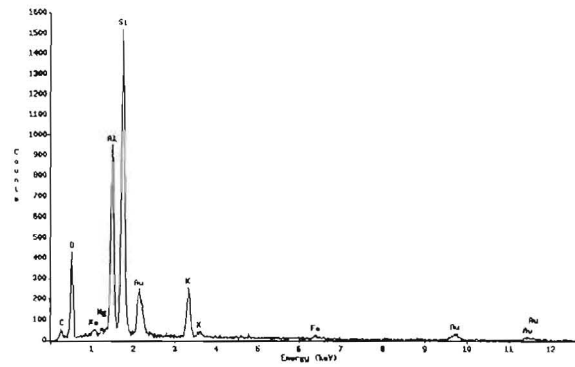
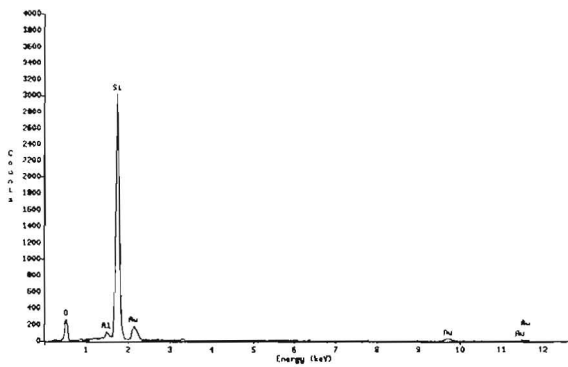
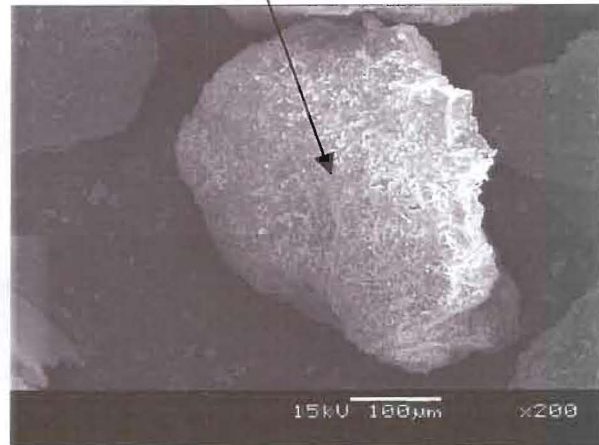
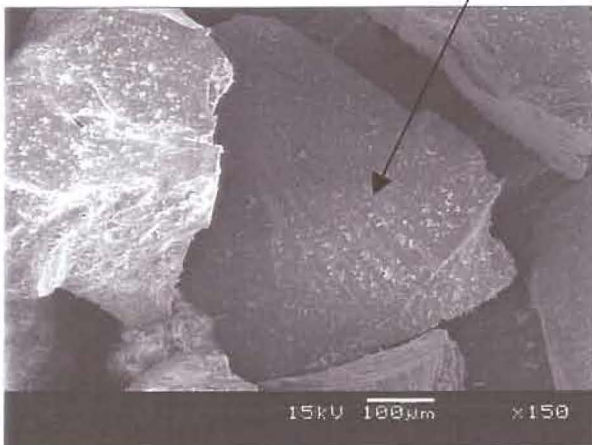
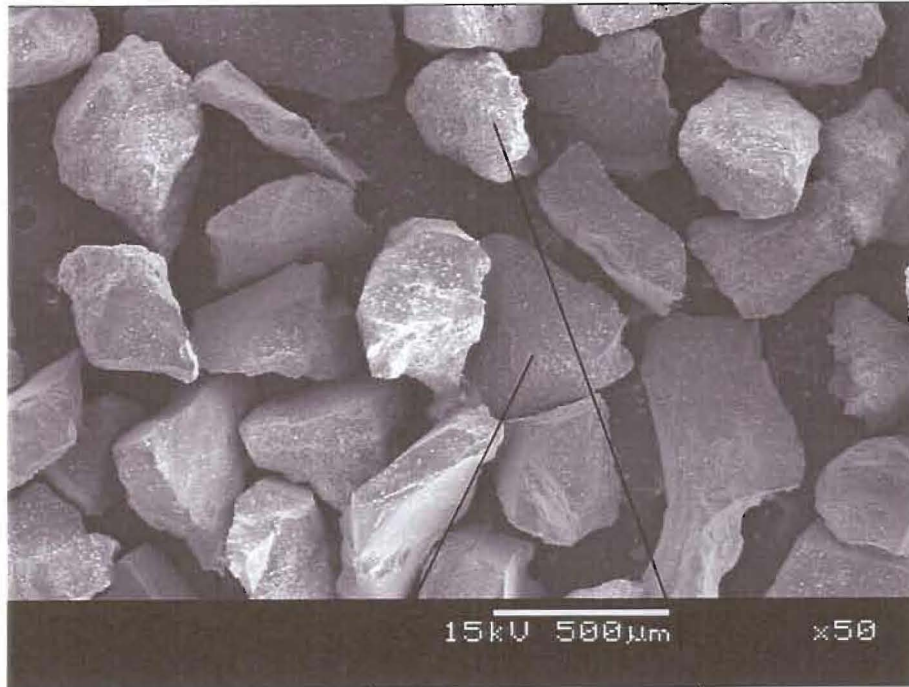


Figure 3-47: Mizpah Whole Tailings, dispersed and retained on the 300 µm sieve.

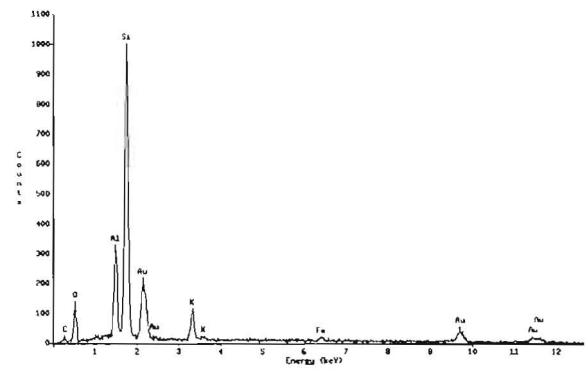
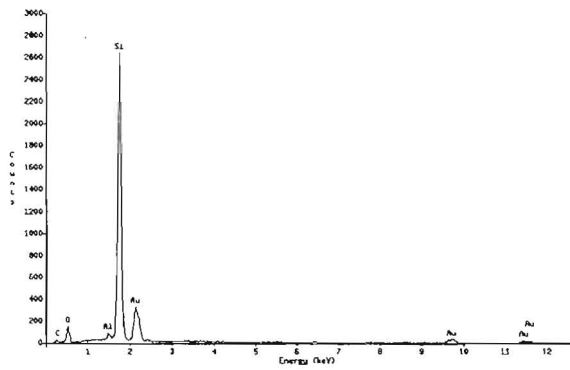
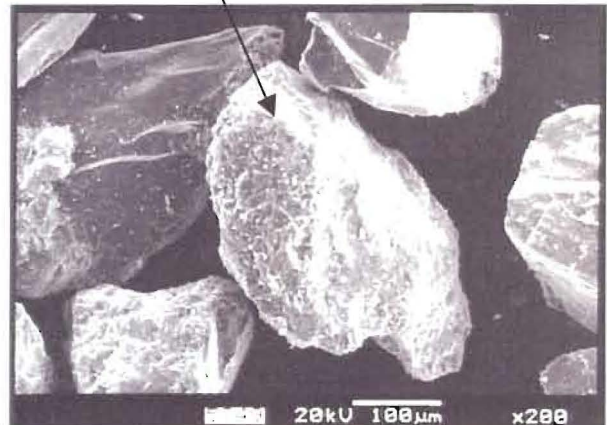
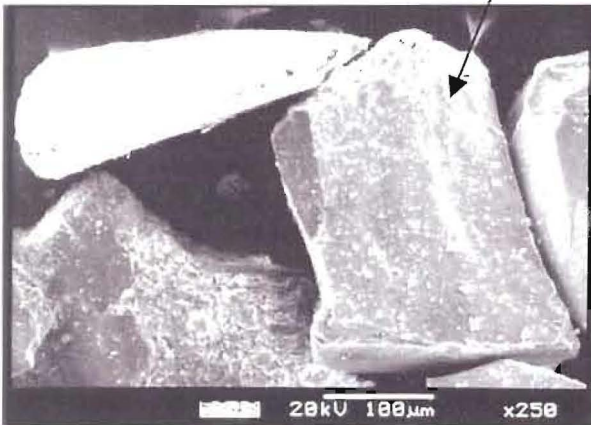
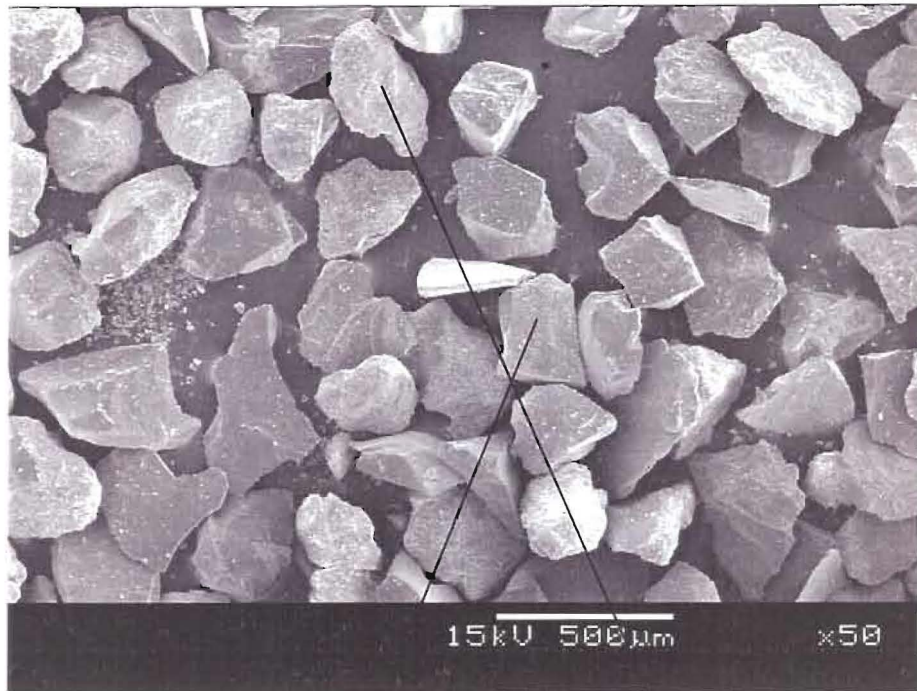


Figure 3-48: Mizpah Whole Tailings, dispersed and retained on the 212 μm sieve.

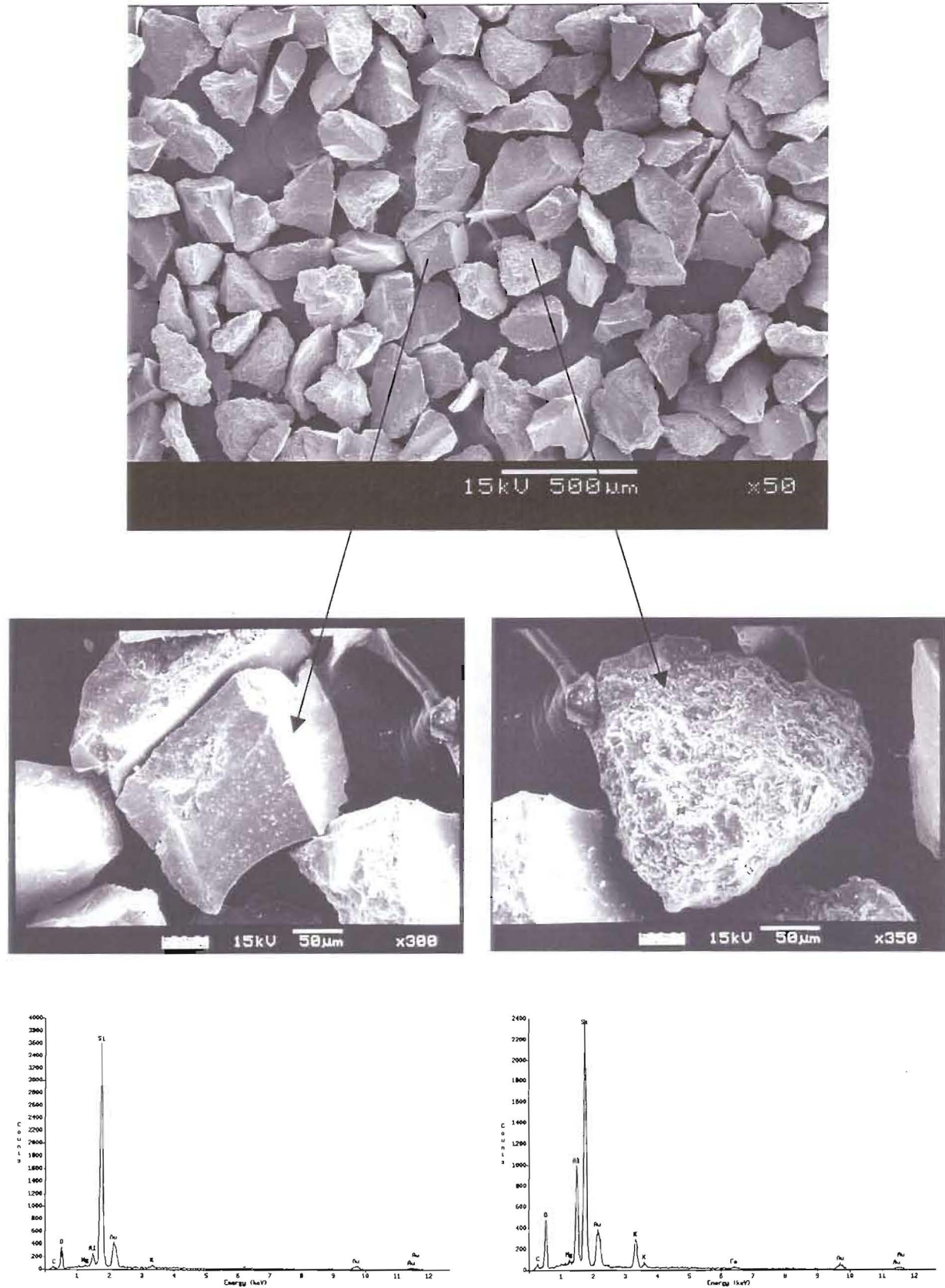


Figure 3-49: Mizpah Whole Tailings, dispersed and retained on the 150 μm sieve.



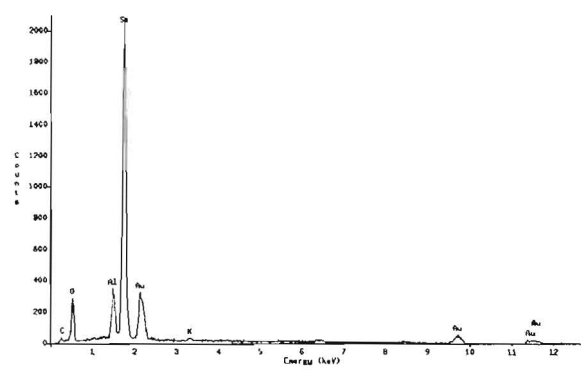
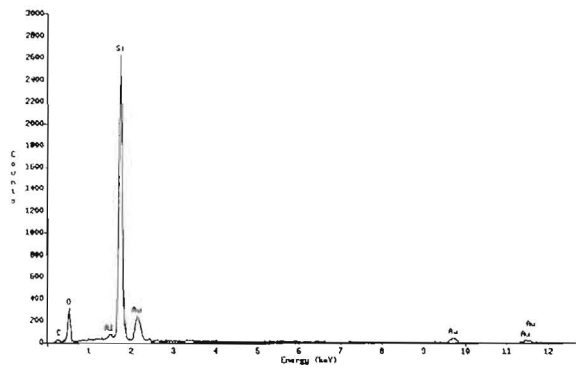
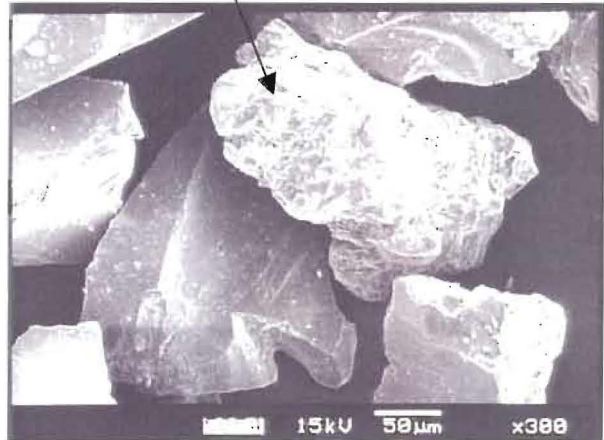
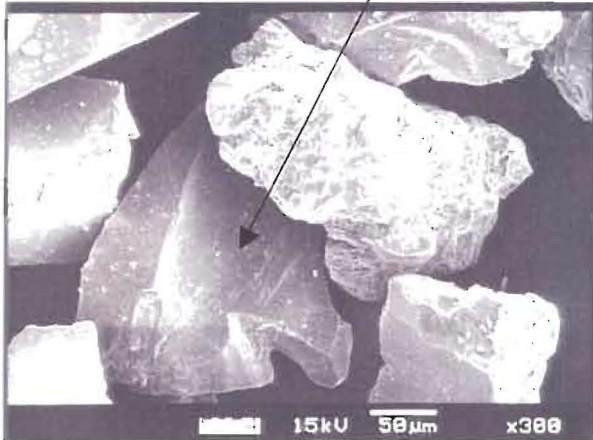
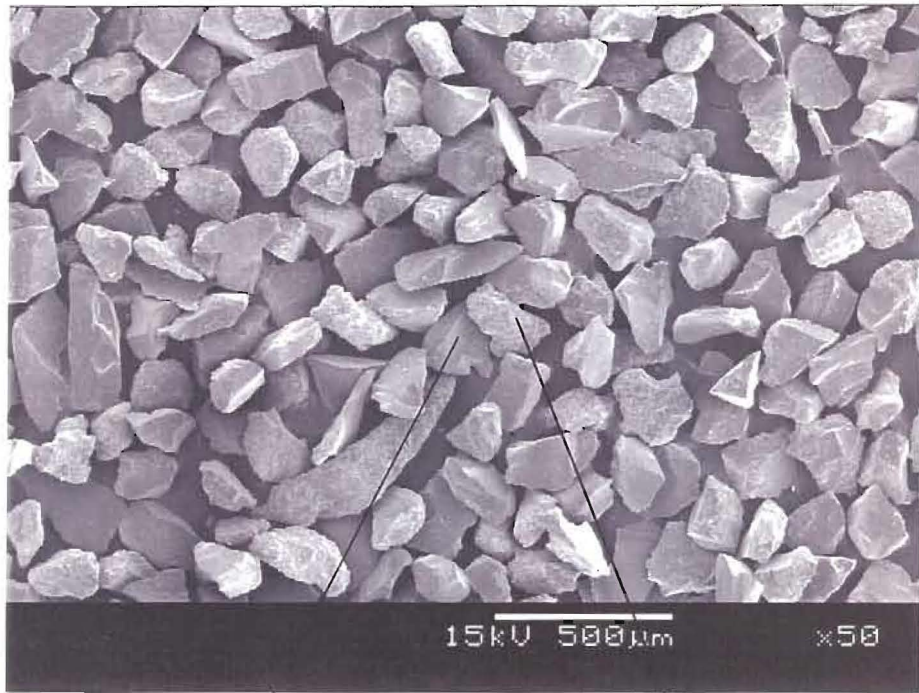


Figure 3-50: Mizpah Whole Tailings, dispersed and retained on the 125 μm sieve.

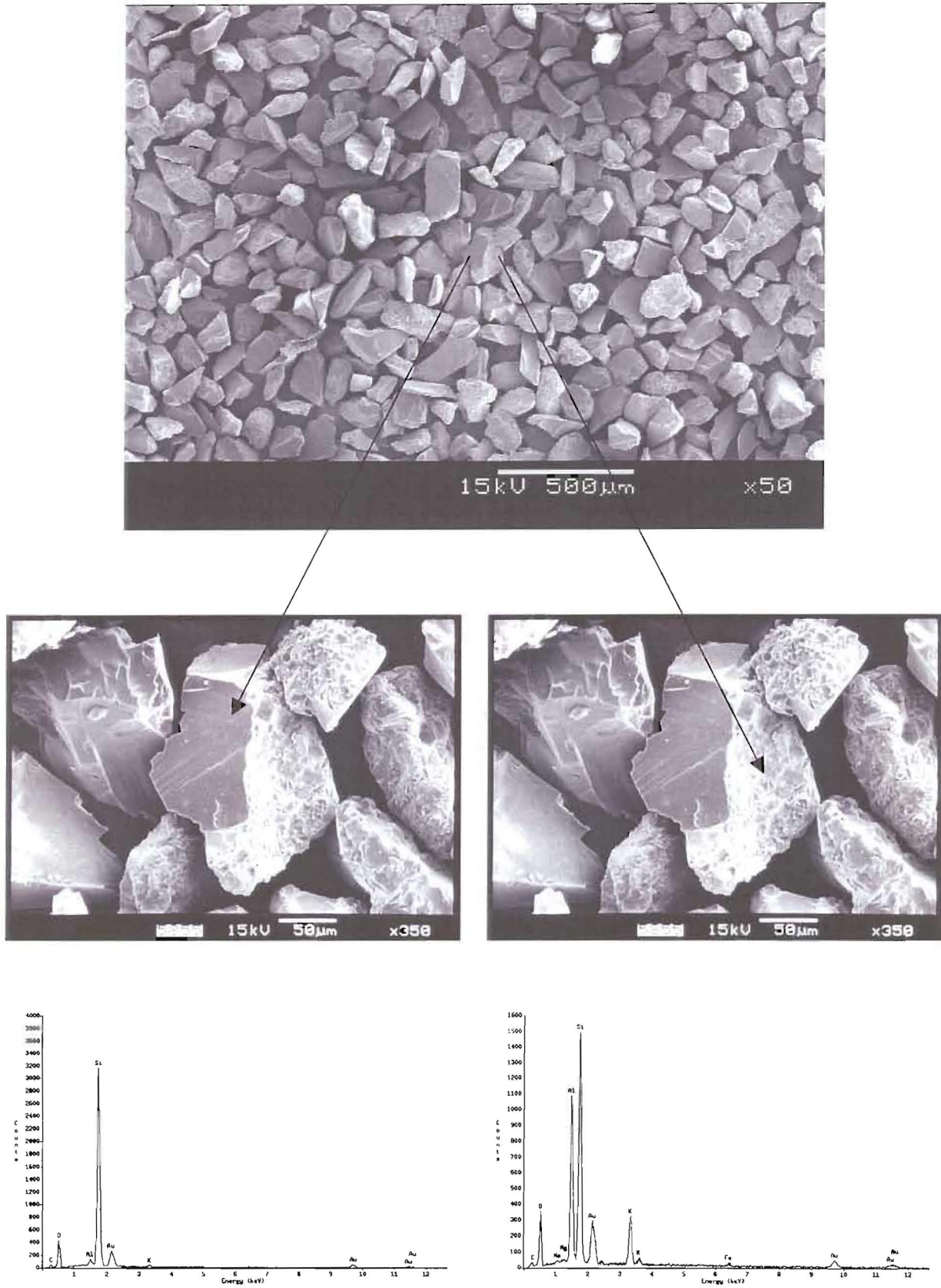


Figure 3-51: Mizpah Whole Tailings, dispersed and retained on the 75 μm sieve.

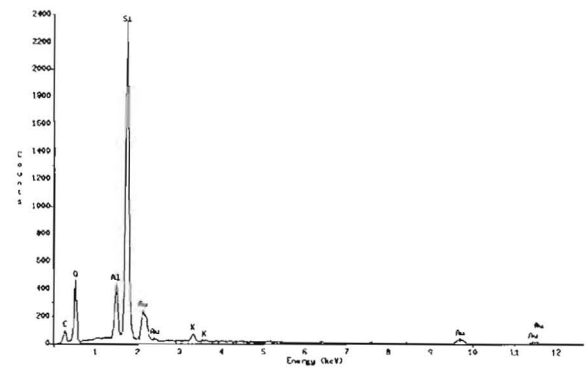
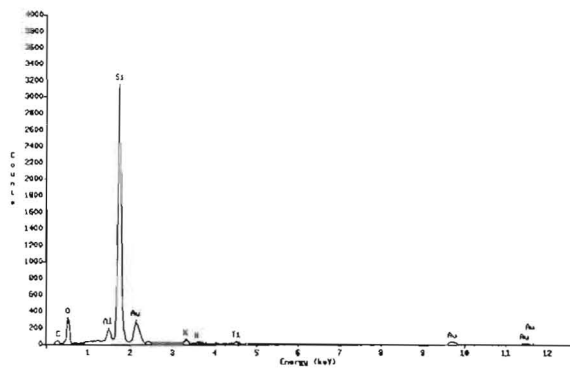
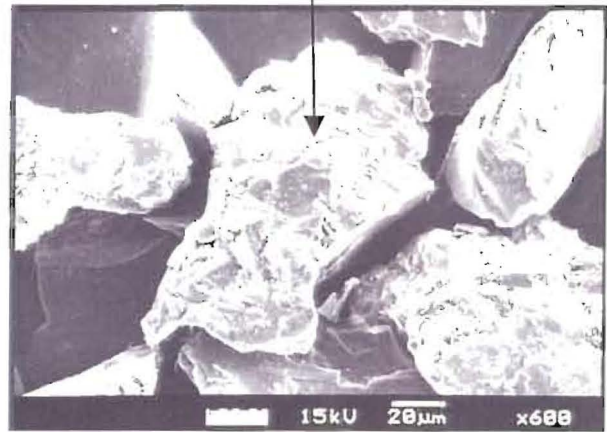
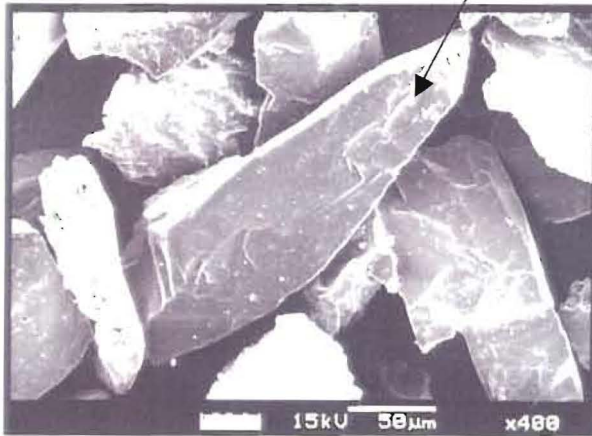
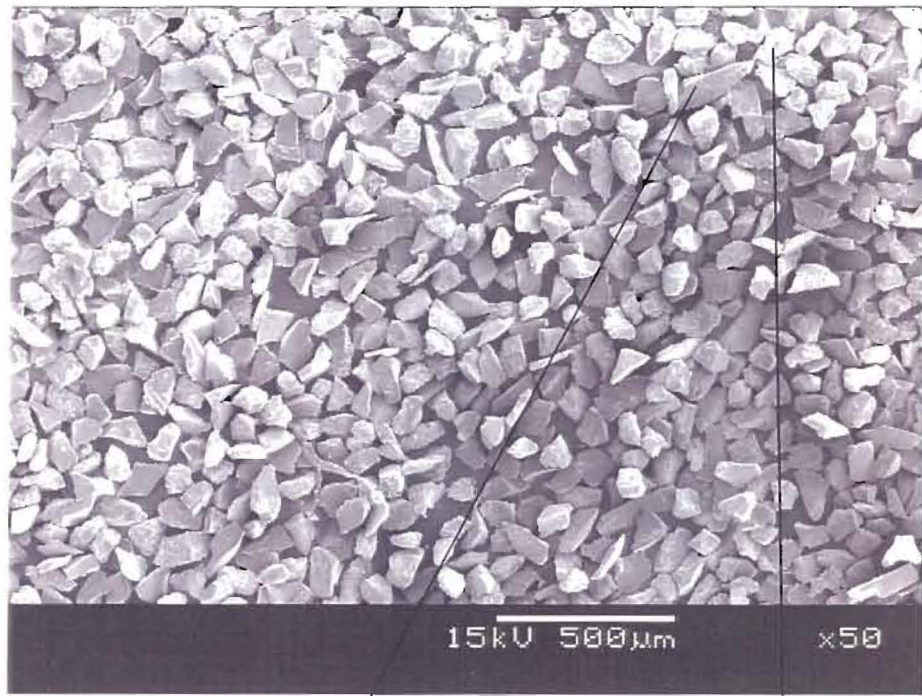
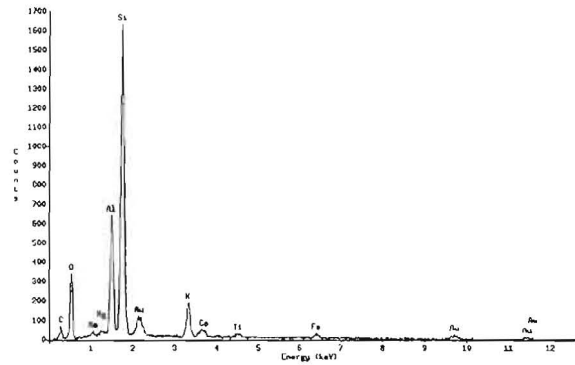
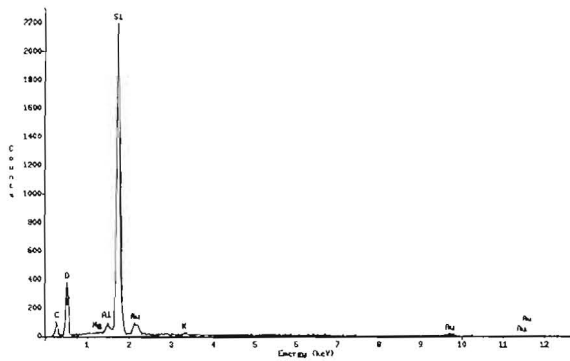
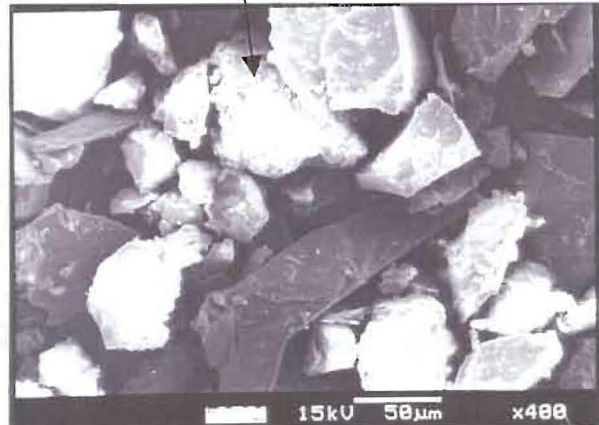
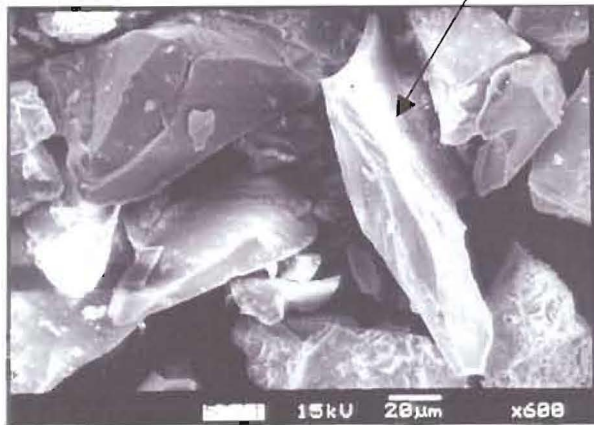
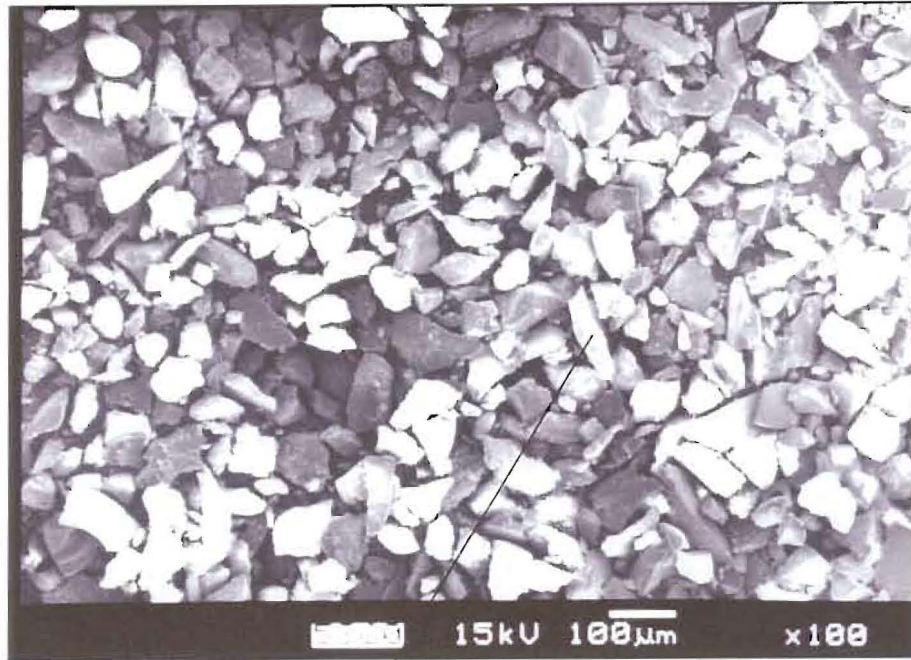


Figure 3-52: Mizpah Whole Tailings, dispersed and retained on the 63 μm sieve.



**Figure 3-53: Mizpah Whole Tailings, dispersed and settled after 4 minutes or >20 μm.**

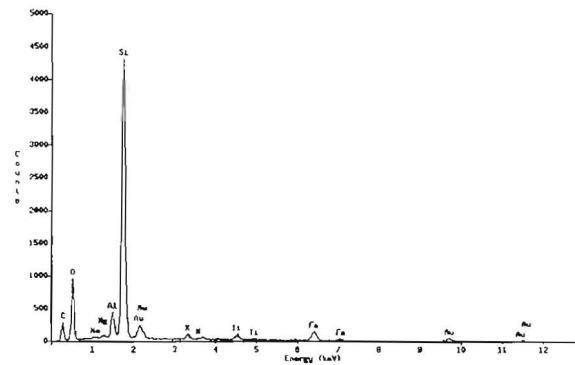
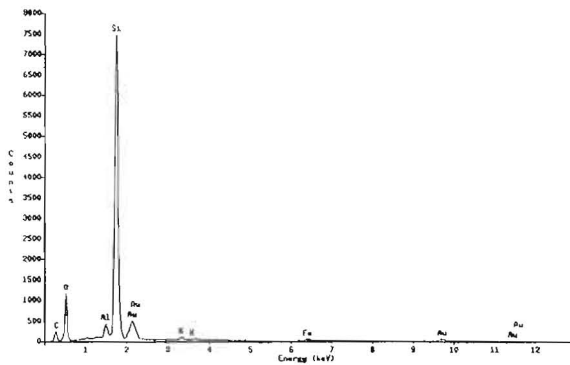
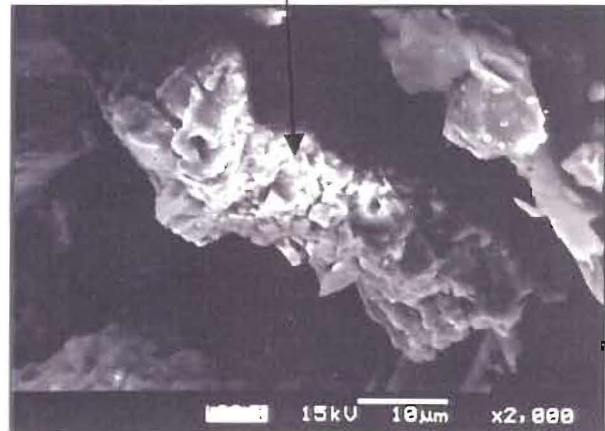
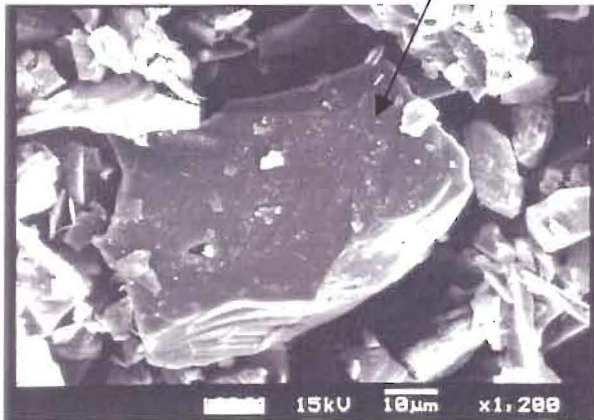
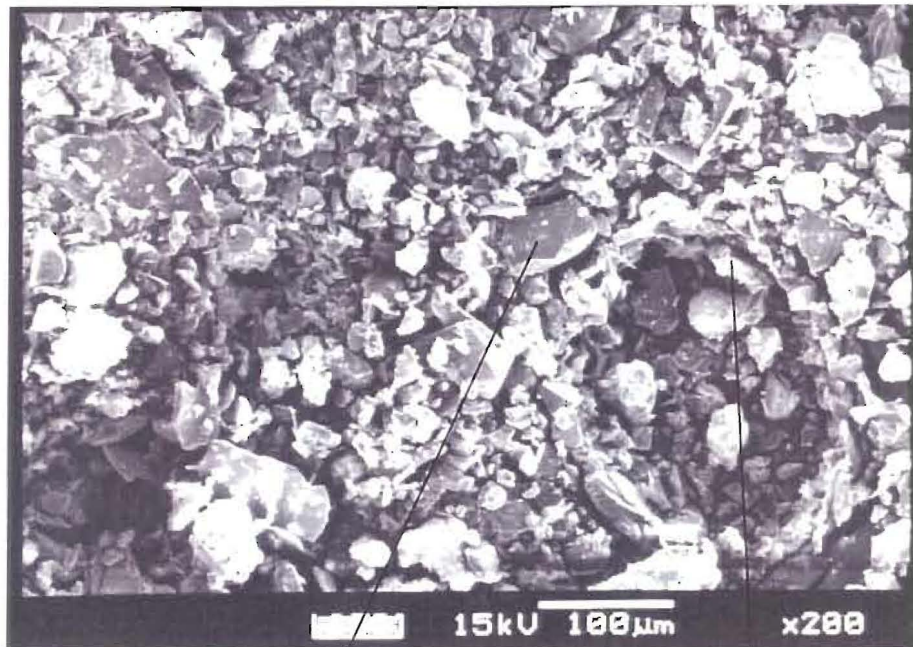


Figure 3-54: Mizpah Whole Tailings, dispersed and settled after 15 minutes or >10 μm.

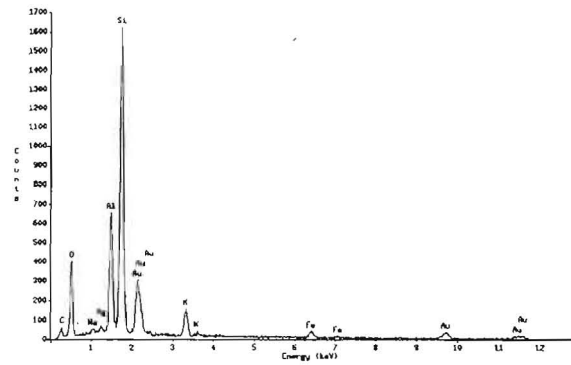
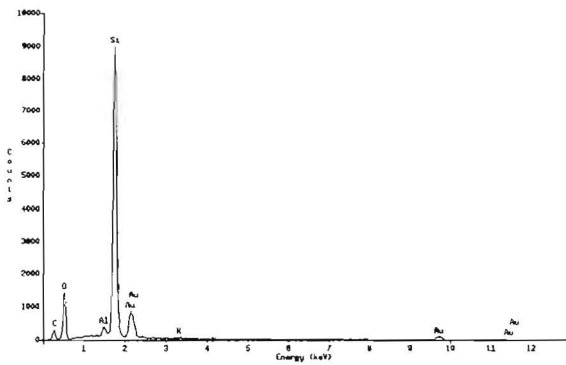
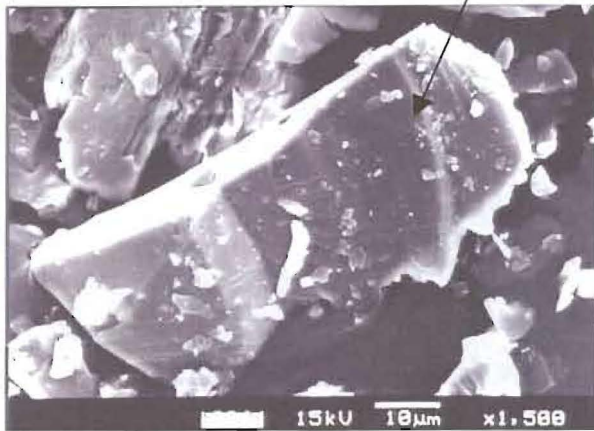


Figure 3-55: Mizpah Whole Tailings, dispersed and settled after 30 minutes or >8  $\mu\text{m}$ .

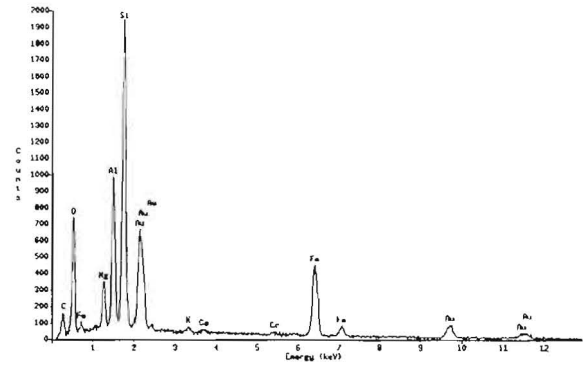
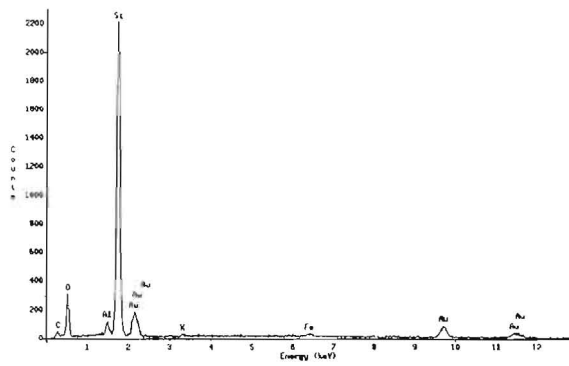
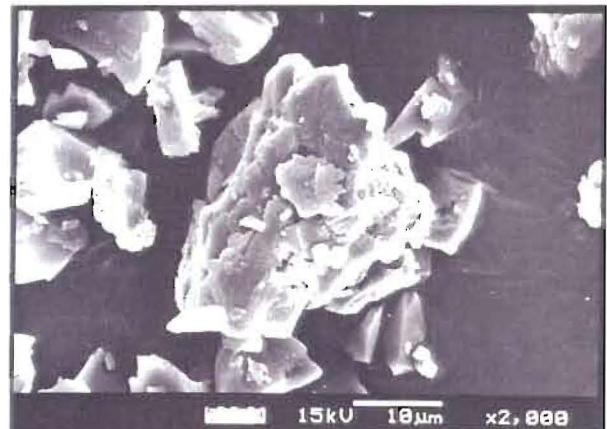
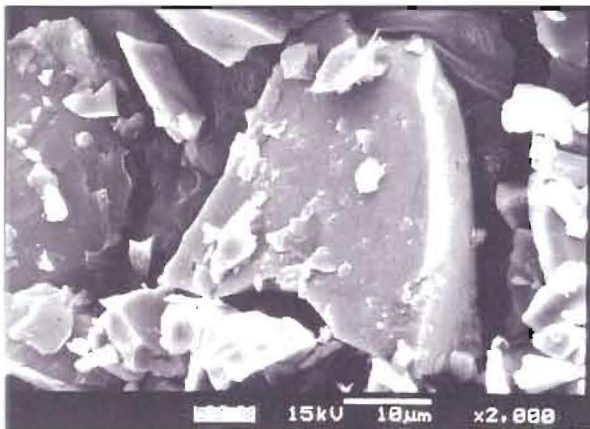
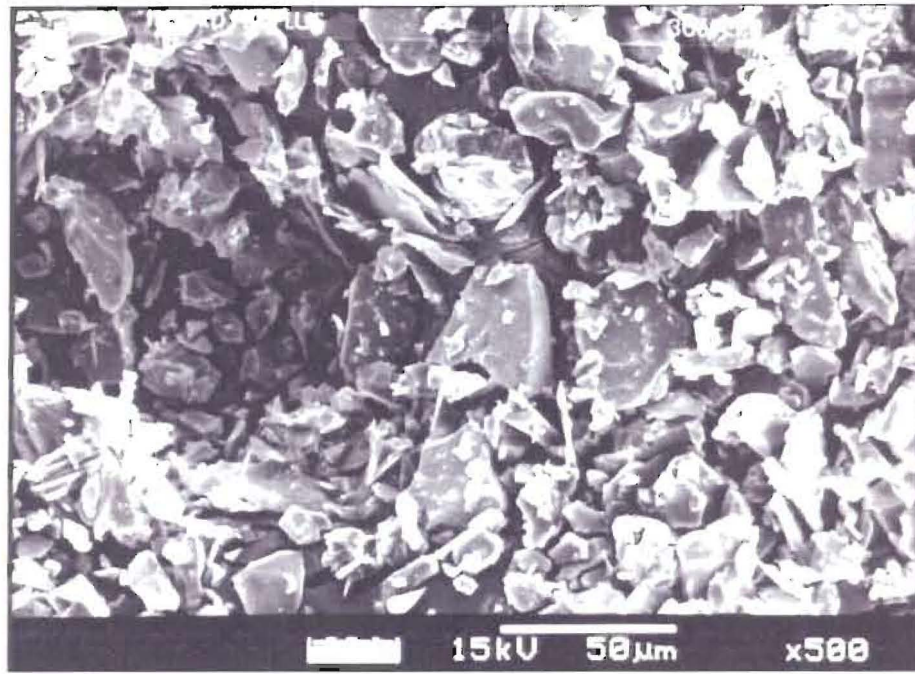


Figure 3-56: Mizpah Whole Tailings, dispersed and settled after 1 hour or >6  $\mu\text{m}$ .