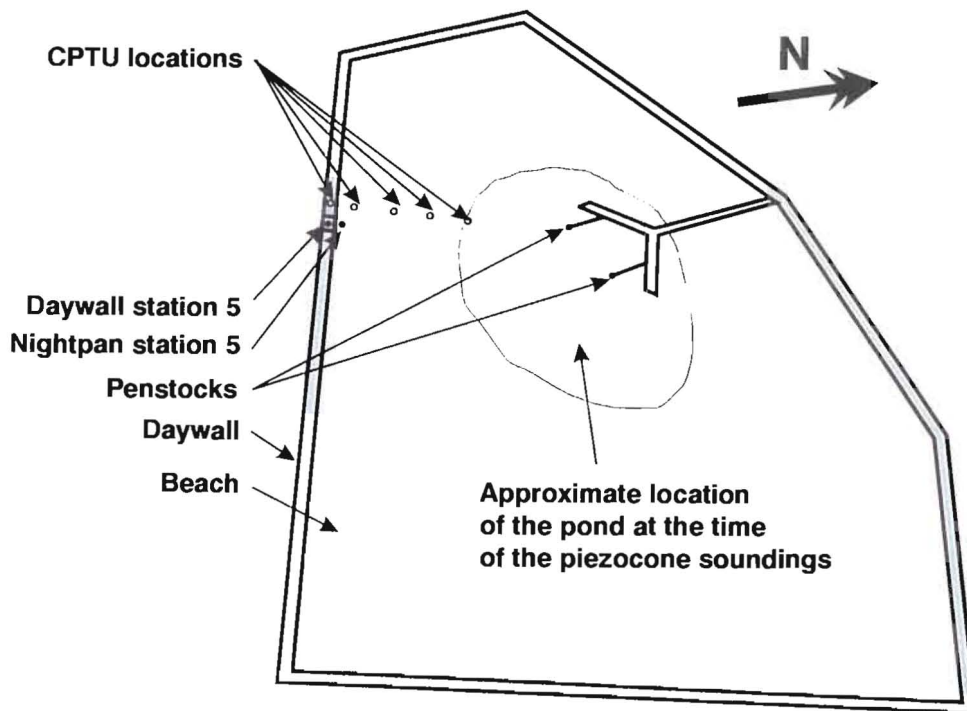




(a)

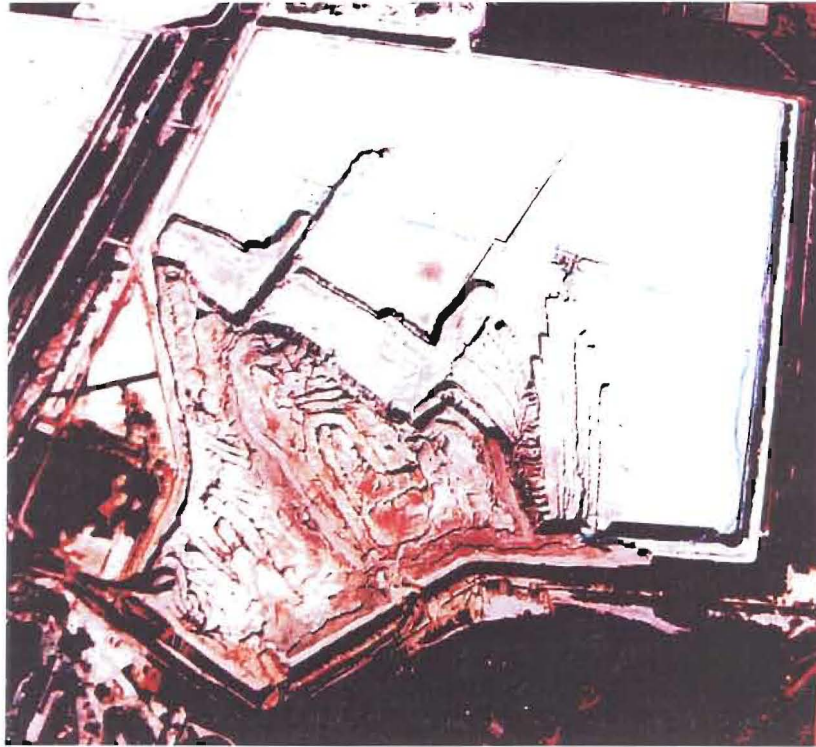


(b)

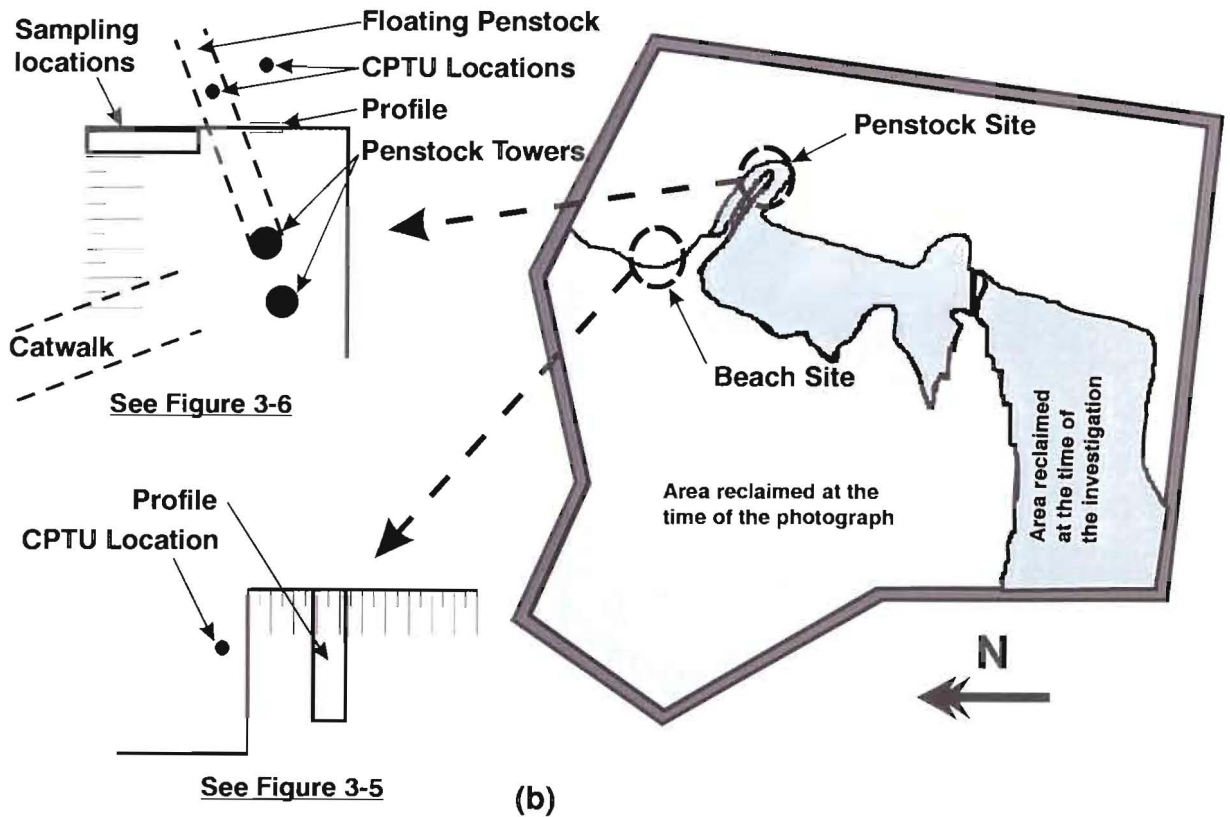
Figure 3-1: (a) Aerial photograph of Mizpah, (b) Diagram of In-situ test and sampling locations.



Figure 3-2: Transportation of equipment on the dried out beach of Mizpah.



(a)



(b)

Figure 3-3: (a) Aerial photograph of Pay Dam, (b) Diagram of In-situ test and sampling locations.



Figure 3-4: Hydro-cannon or monitors used on Pay Dam.



Figure 3-5: Site of the upper beach exposed by reclamation on Pay Dam.



Figure 3-6: (a) Exposed northern penstock at Pay Dam.



Figure 3-6: (b) Pay Dam site showing a close-up of the 5 m profile and the sampling pits.

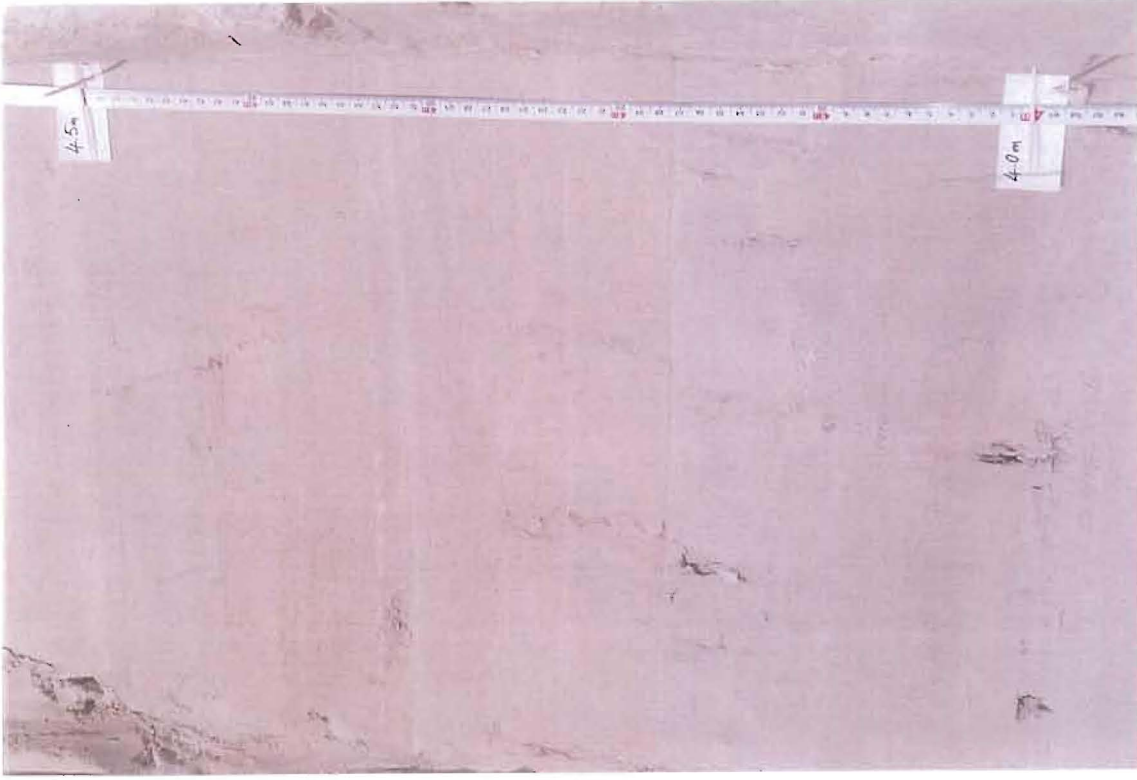


Figure 3-7: Pay Dam - Penstock: Photos of the profile from 0 to 1 m in depth.



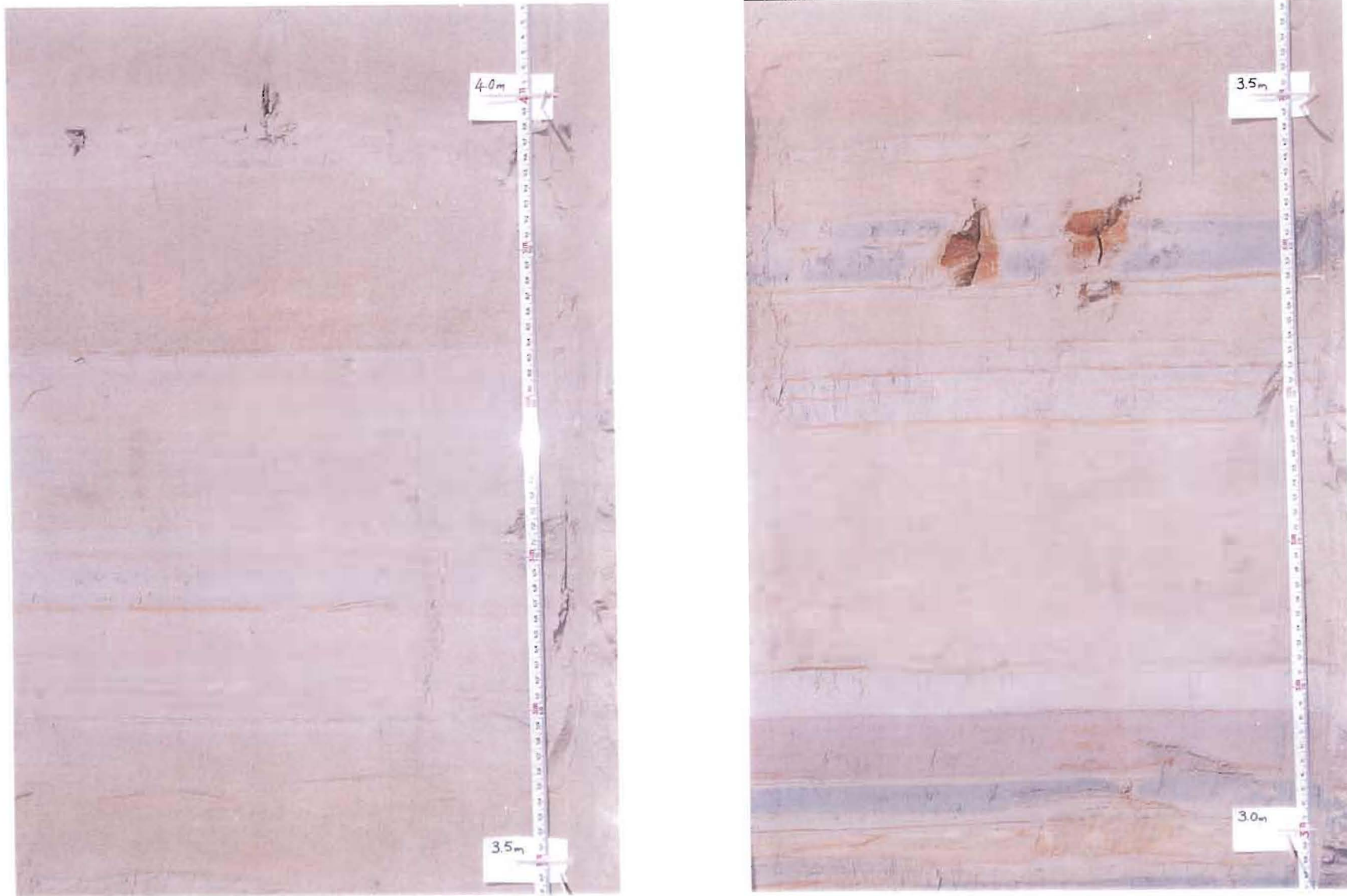


Figure 3-8: Pay Dam - Penstock: Photos of the profile from 1 to 2 m in depth.



Figure 3-9: Pay Dam - Penstock: Photos of the profile from 2 to 3 m in depth.

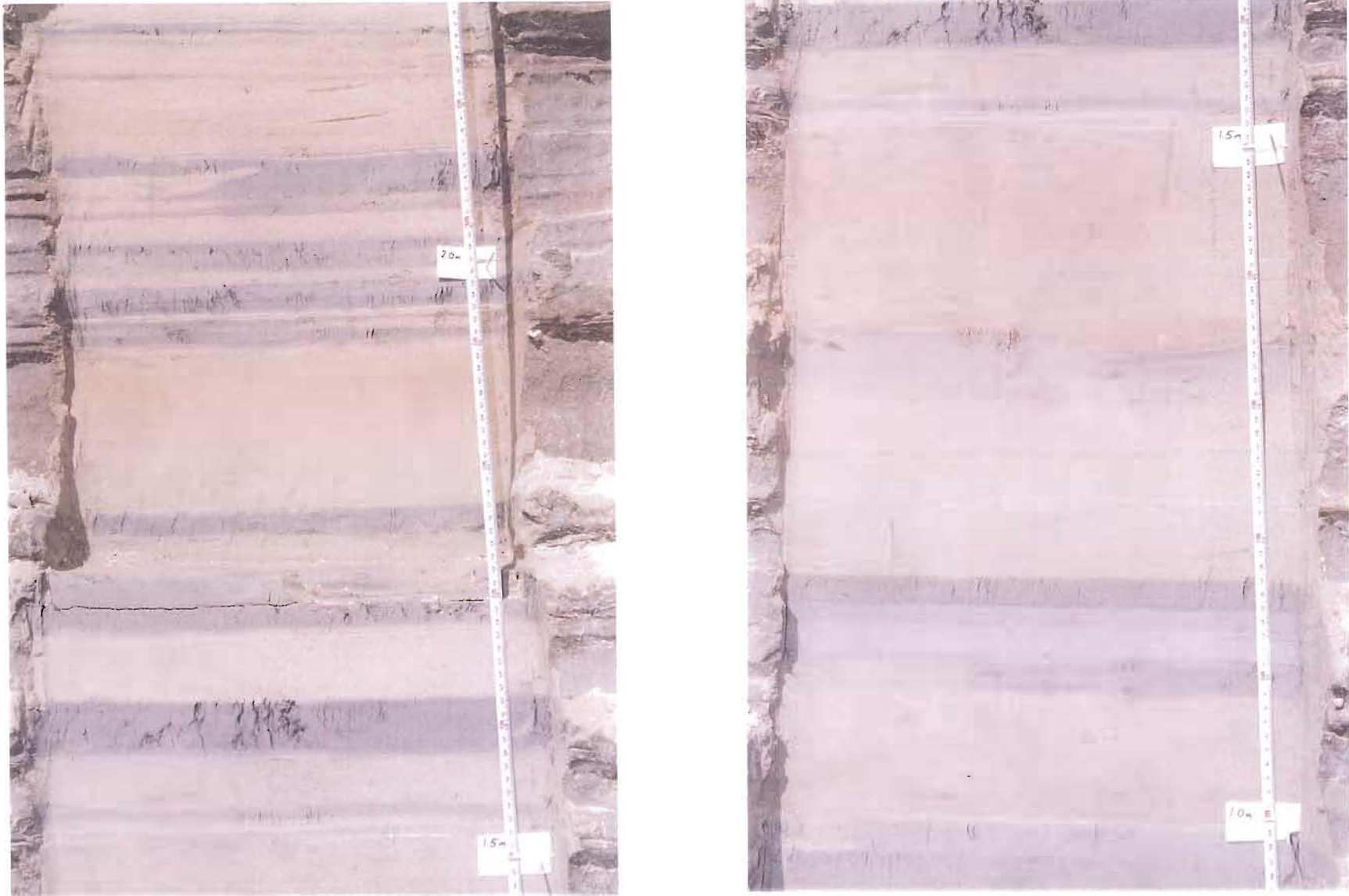


Figure 3-10: Pay Dam - Penstock: Photos of the profile from 3 to 4 m in depth.



Figure 3-11: Pay Dam - Penstock: Photos of the profile from 4 to 5 m in depth.

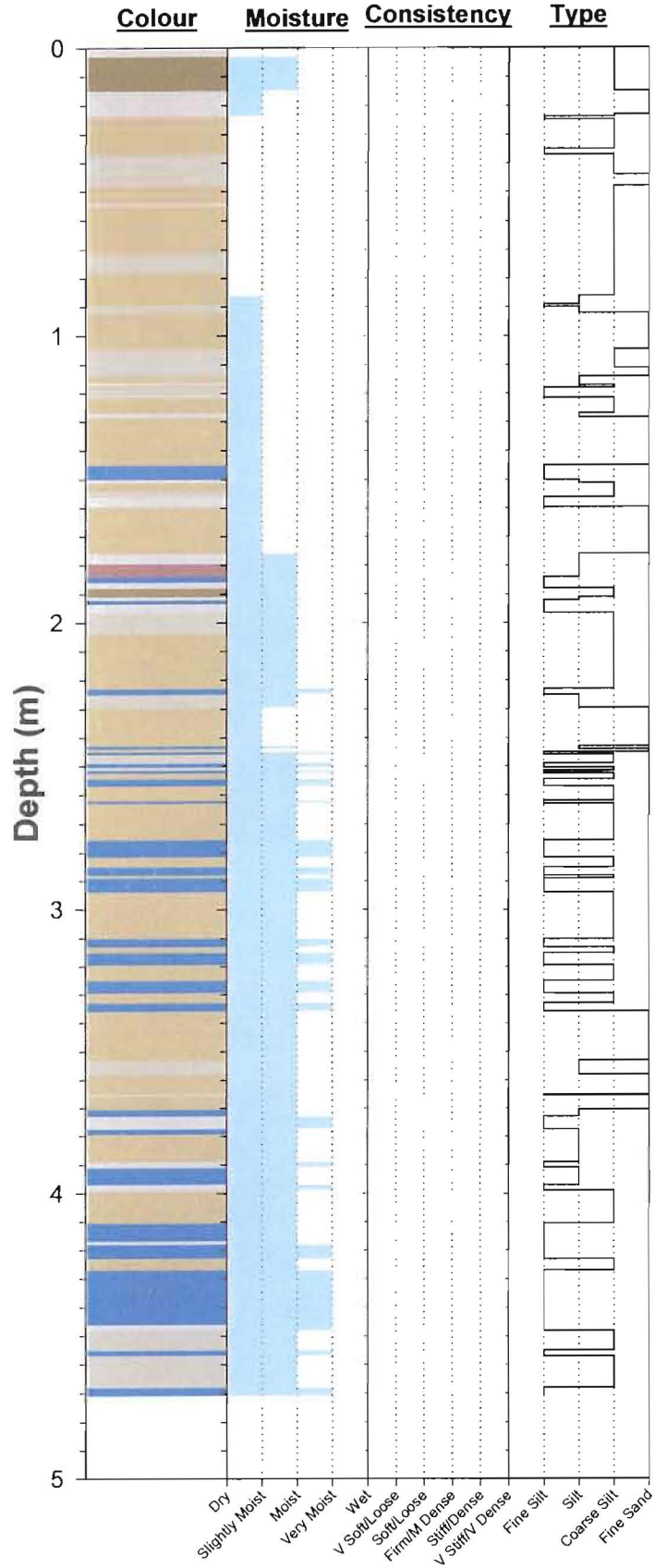


Figure 3-12: Pay Dam - Penstock: Full profile from 0 to 5 m in depth.

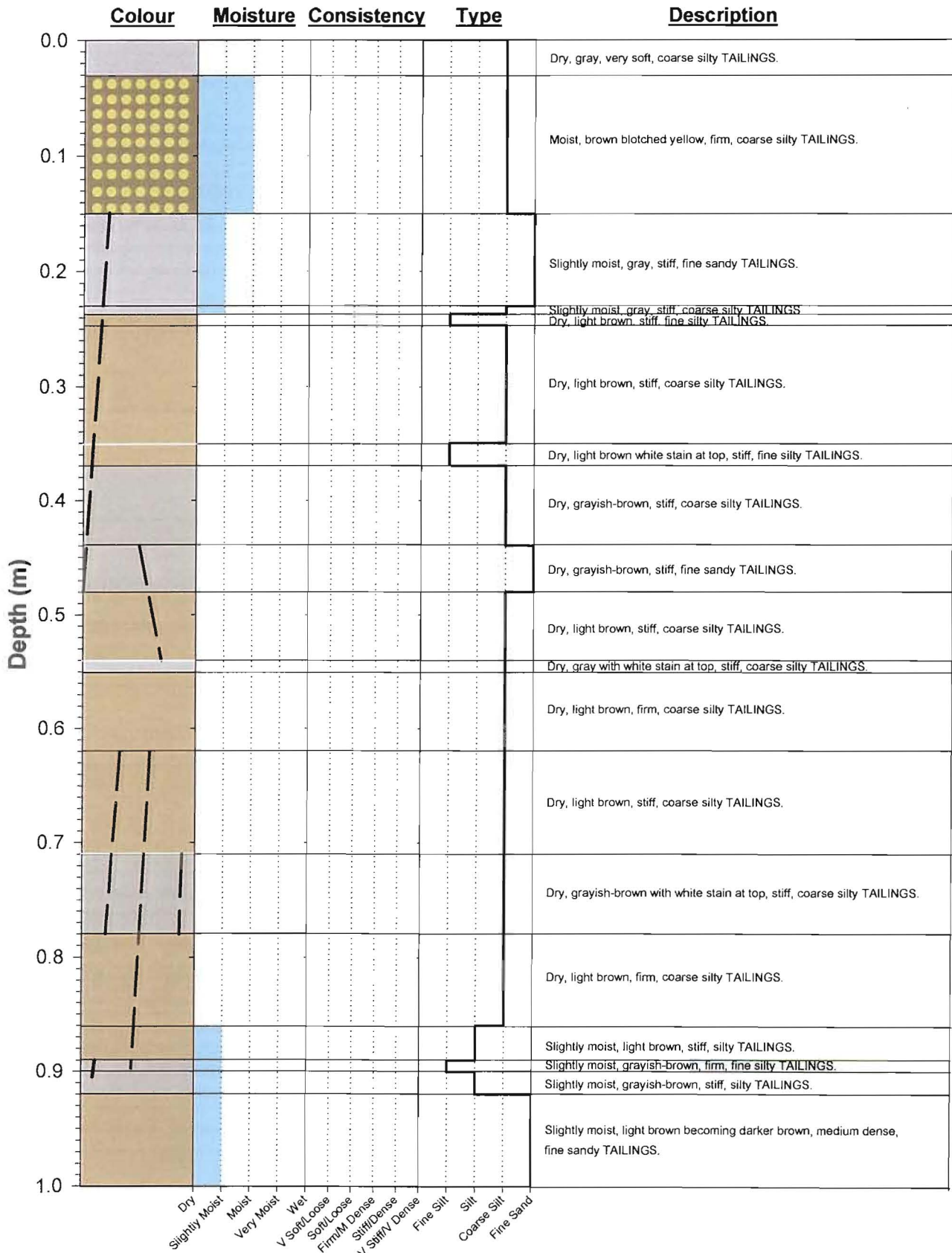


Figure 3-13: Pay Dam - Penstock: Profile from 0 to 1 m in depth.

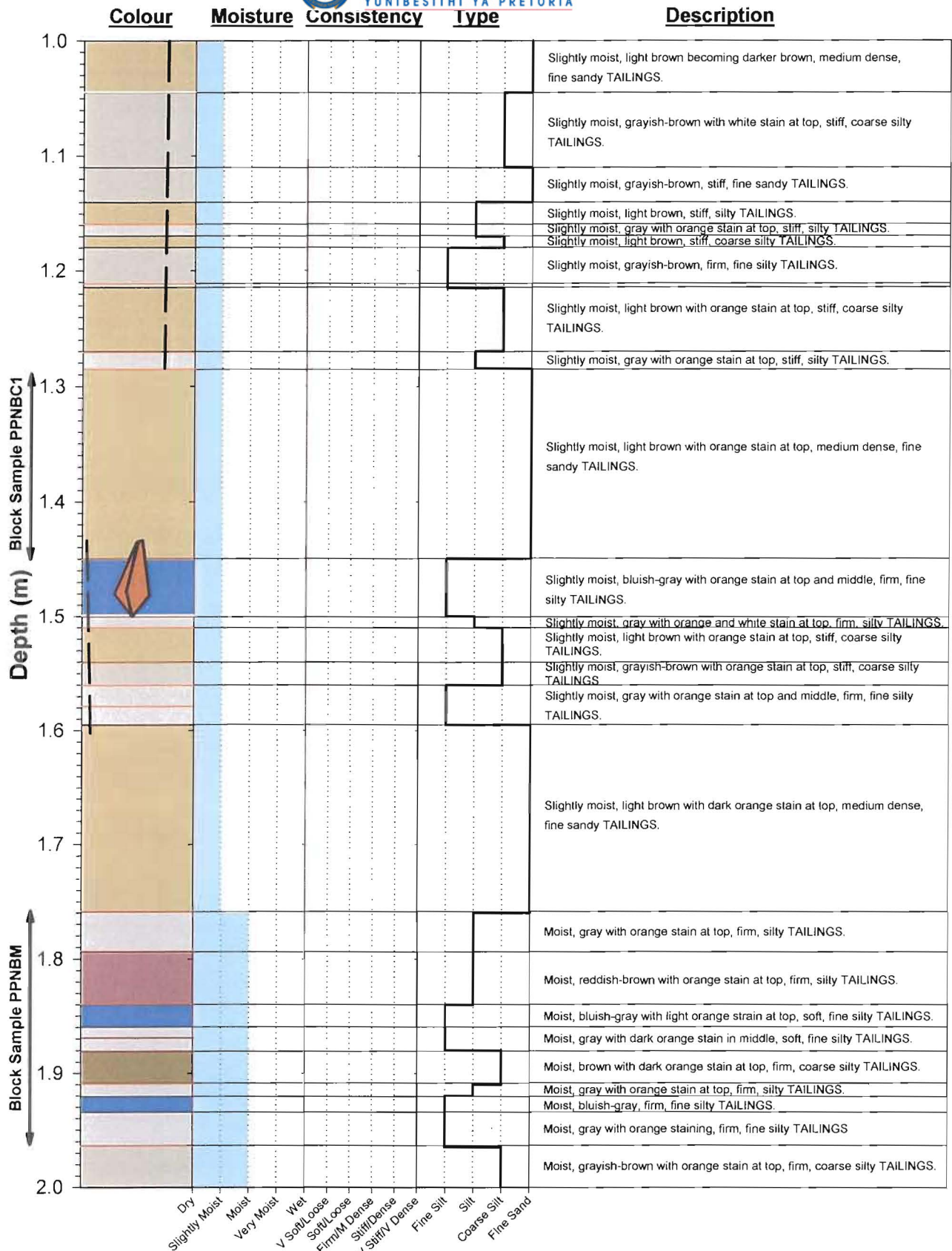


Figure 3-14: Pay Dam - Penstock: Profile from 1 to 2 m in depth.

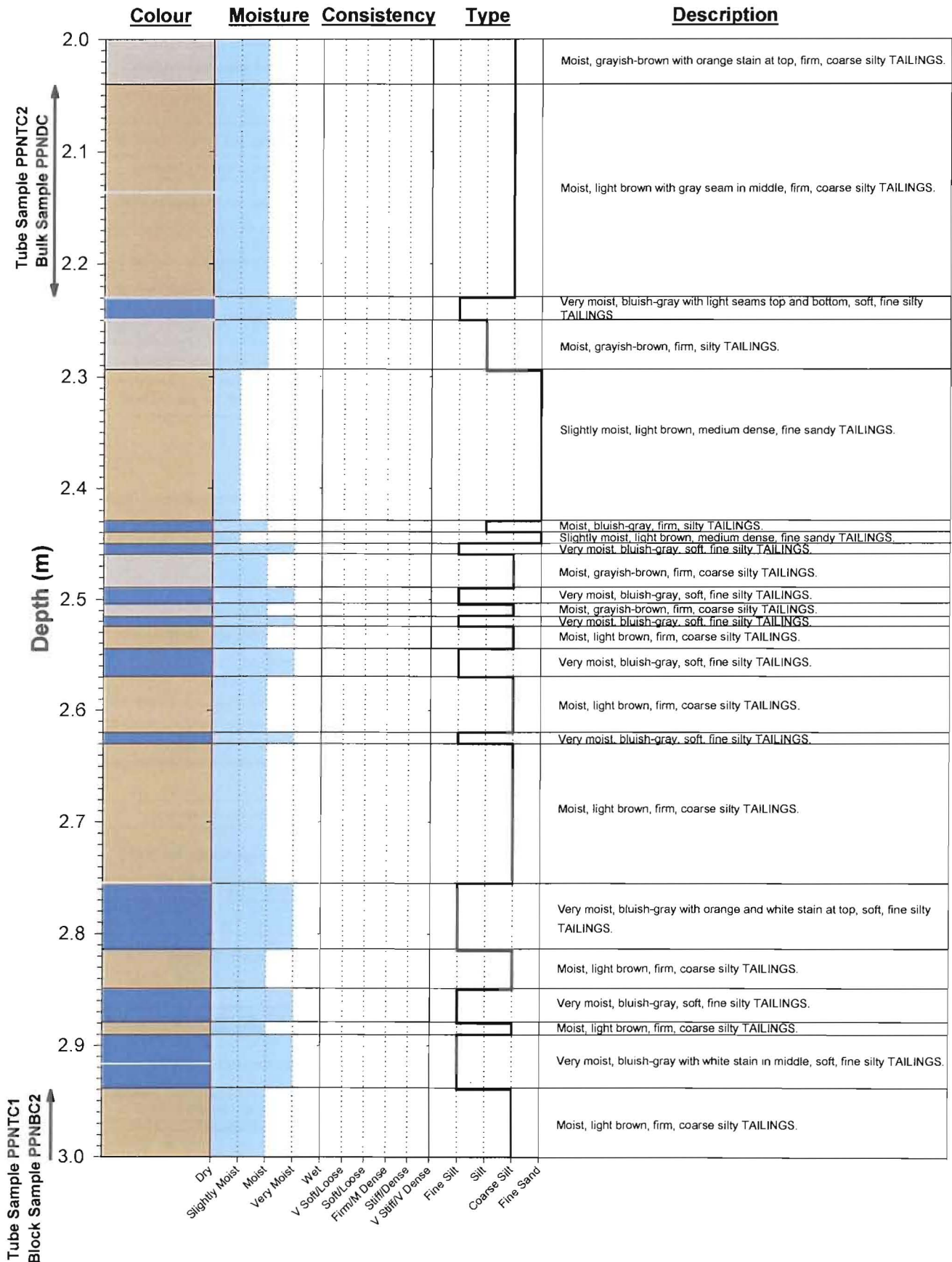


Figure 3-15: Pay Dam - Penstock: Profile from 2 to 3 m in depth.



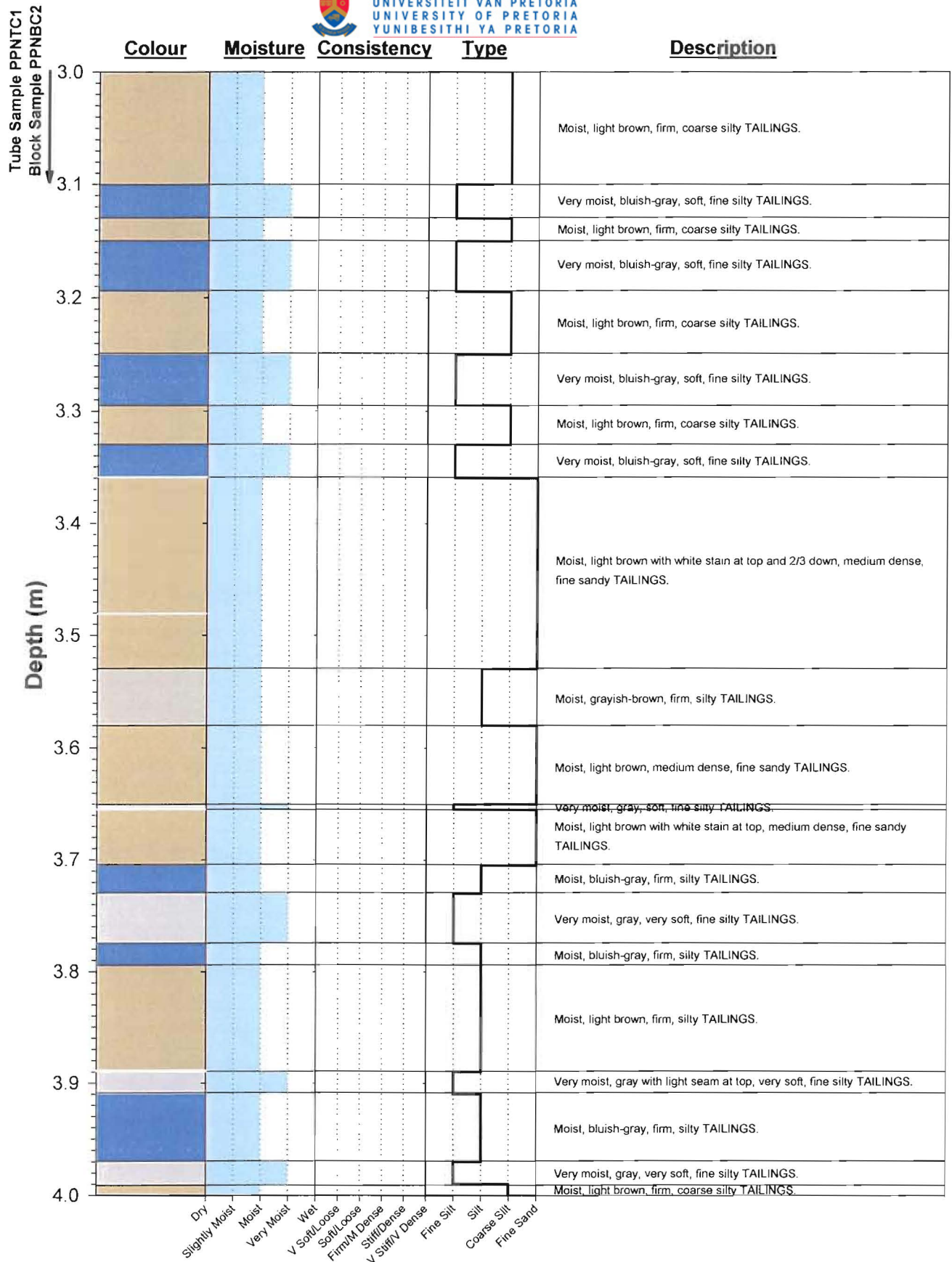


Figure 3-16: Pay Dam - Penstock: Profile from 3 to 4 m in depth.

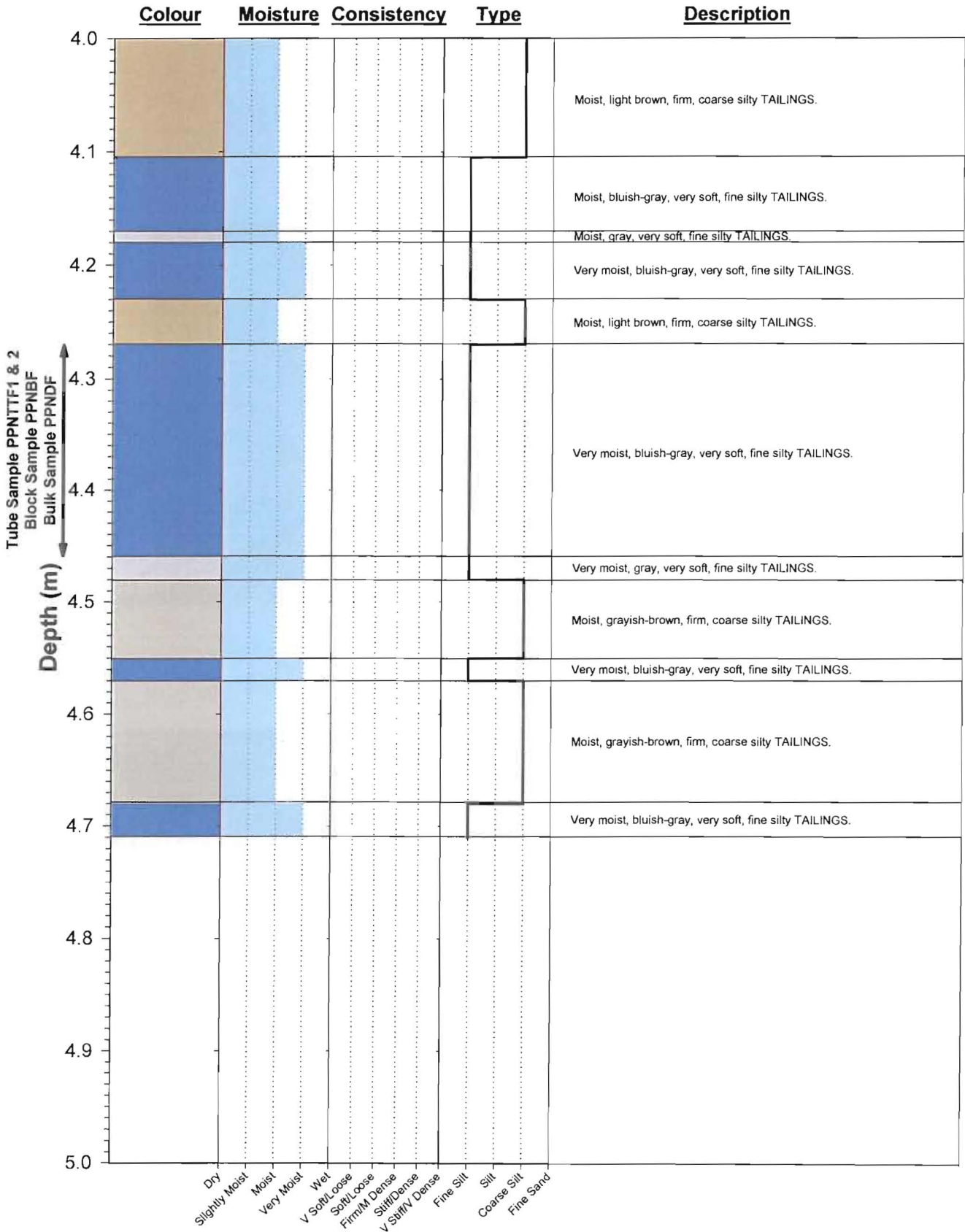


Figure 3-17: Pay Dam - Penstock: Profile from 4 to 5 m in depth.