

# Pretoriana

**T**HIS is a striking example of how Pretoria's skyline has changed over the past 60 years, as viewed from the Union Buildings.

The earlier picture, taken from the lower terrace of the Union Buildings, shows what the city looked like in the late 1920s or early 30s.

Nearly all the buildings seen in the background were houses, except the buildings in the business centre around Church Square.

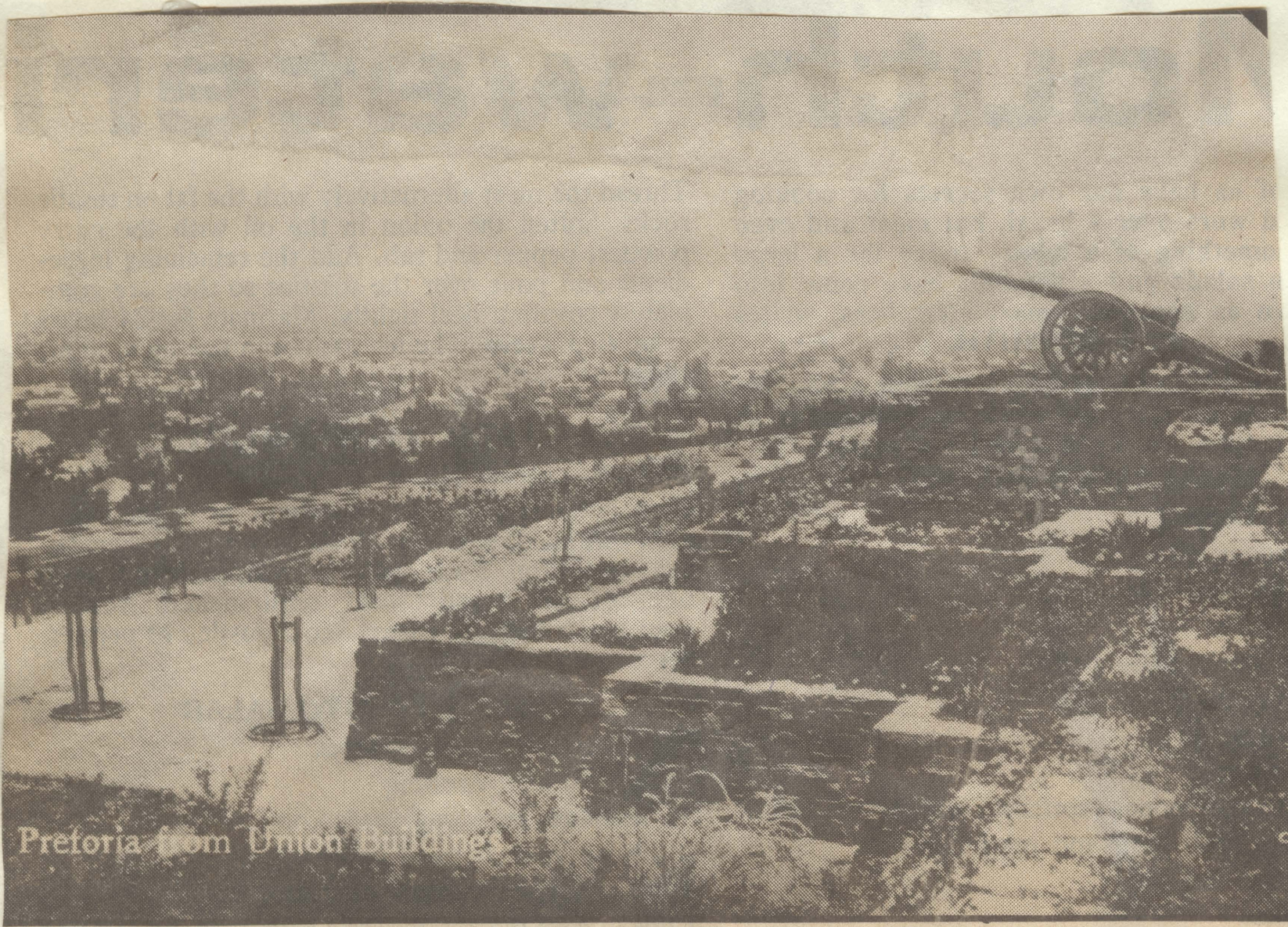
Looking at the skyline of today's picture one can see how the area has changed from semi-residential to a concrete jungle.

The tall building in the centre of the picture is the new South African Reserve Bank. The buildings in the foreground are mainly flats and offices.

The gardens of the Union Buildings have also undergone considerable change over the years.

*(Pretoriana picture submitted by Mr Paul van Zeyl, Box 29012, Sunnyside. Text by staff writer Daan de Beer.)*

12  
BF



Pretoria from Union Buildings





Pretoria is studded with historical places. New buildings and other structures have replaced landmarks well remembered by the city's inhabitants. As a special feature for all our readers — both young and older — The Pretoria News publishes pictures every Friday showing how time has wrought changes to sites in the city. We print early photographs of the sites with photographs of them as they are now, although a new building sometimes obscures the viewpoint. Should any readers have pictures of Old Pretoria, showing landmarks which have changed dramatically over the past years, please forward them (with a note saying when and where they were taken) to the News Editor, The Pretoria News, PO Box 439, Pretoria 0001, or hand them in at the News Room, Second Floor, The Pretoria News, 216 Vermeulen Street. Unfortunately The Pretoria News cannot be responsible for loss or damage to any photographs.