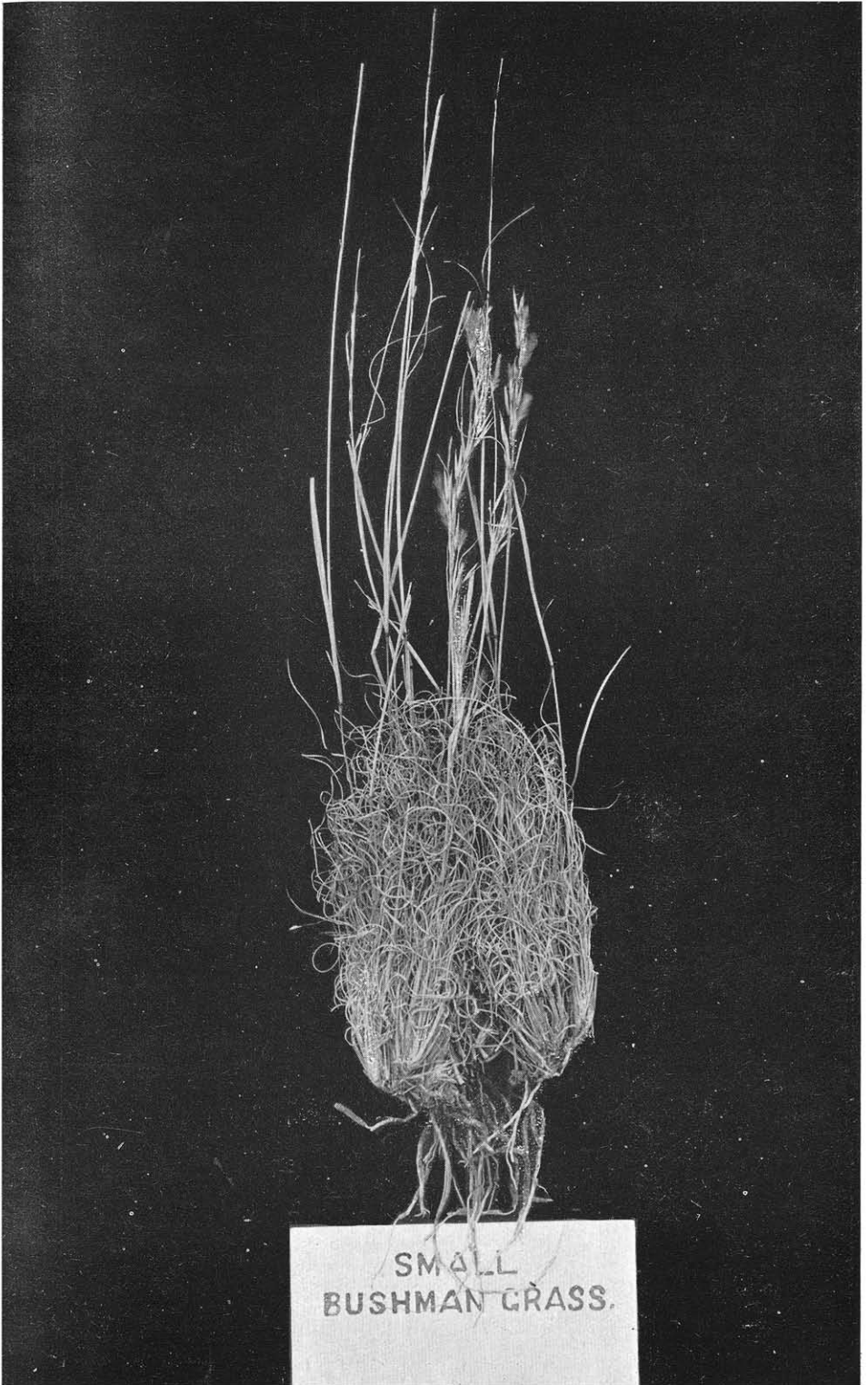


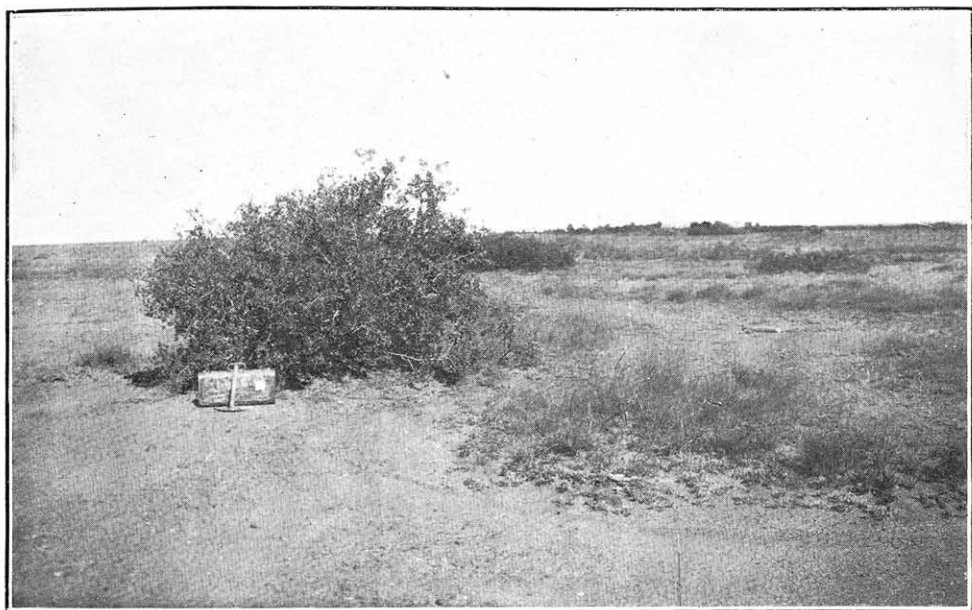


Plate No. 11.]

Plants eaten by Stock.

Large Bushman-grass (*Aristida ciliata* var. *tricholoma*.)





Bushes eaten by Stock. A.—Blaauwbosch (*Royena pallens*) at Kaffraria, Christiana.

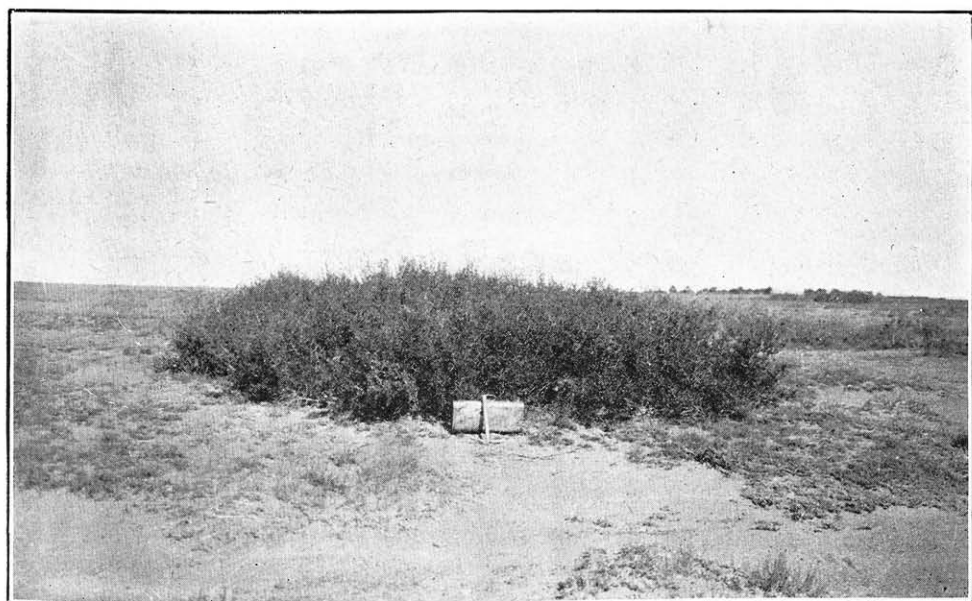
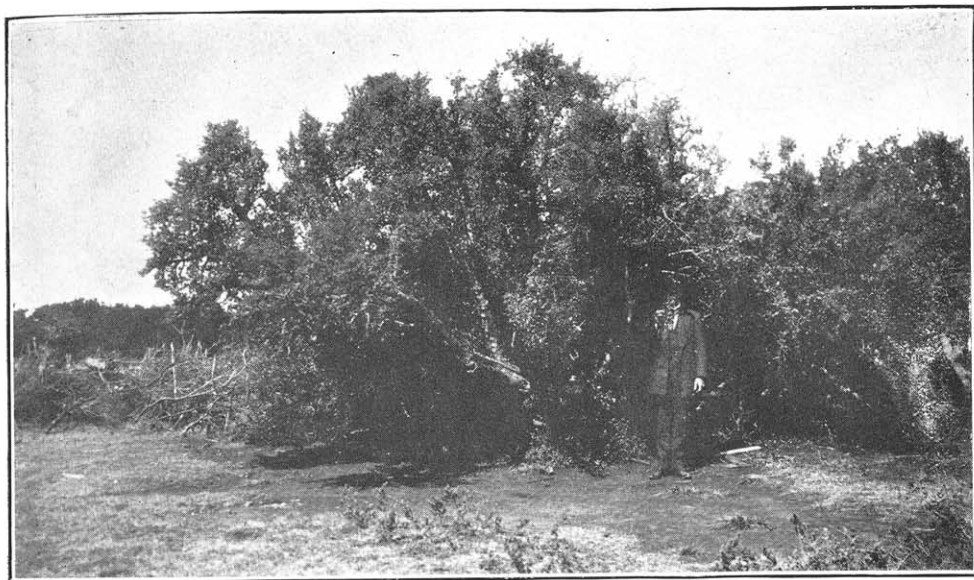


Plate No. 13.]

Bushes eaten by Stock. B.—Rozijnchi-bosch (*Grewia cana*), also at Kaffraria.



Bushes eaten by Stock. A.—Spek-boom (*Portulacaria afra*), near Grahamstown.

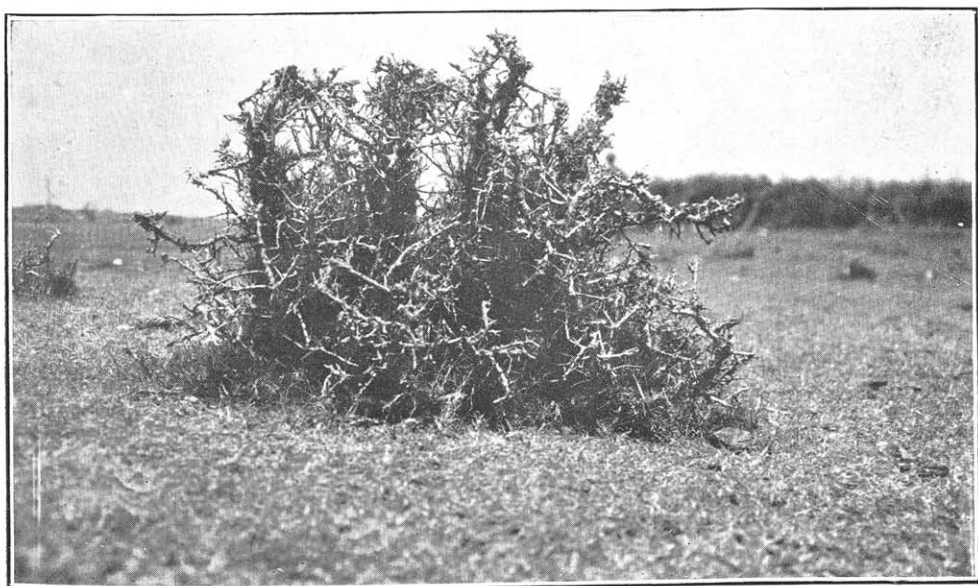
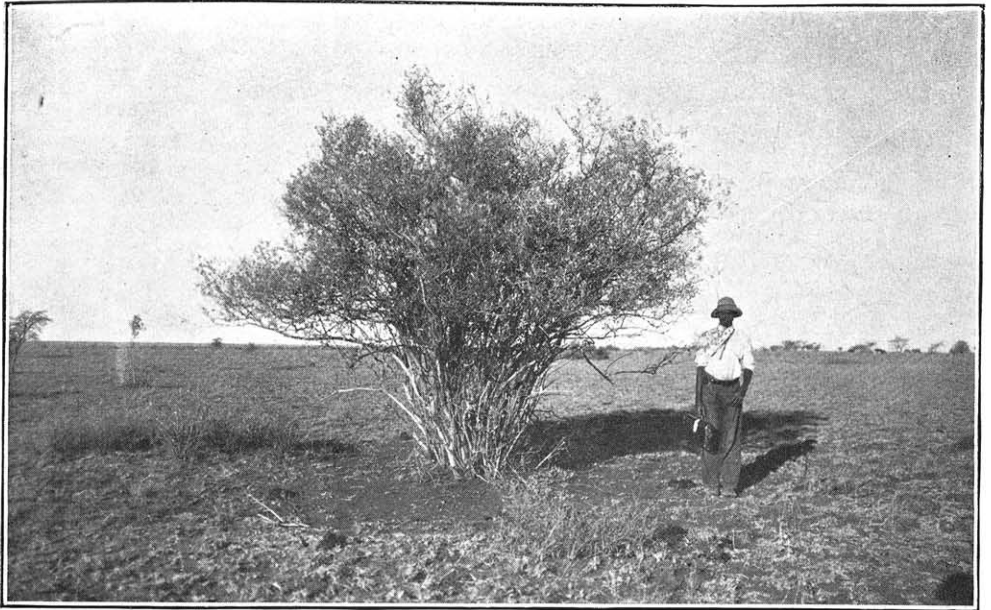


Plate No. 14.]

Bushes eaten by Stock. B.—A shrub much browsed by Stock near Aloes, Uitenhage Division.



Bushes eaten by Stock. A.—Vaal-bosch (*Tarchonanthus camphoratus*), Smitskraal, Boshoff District.
 Much browsed below.

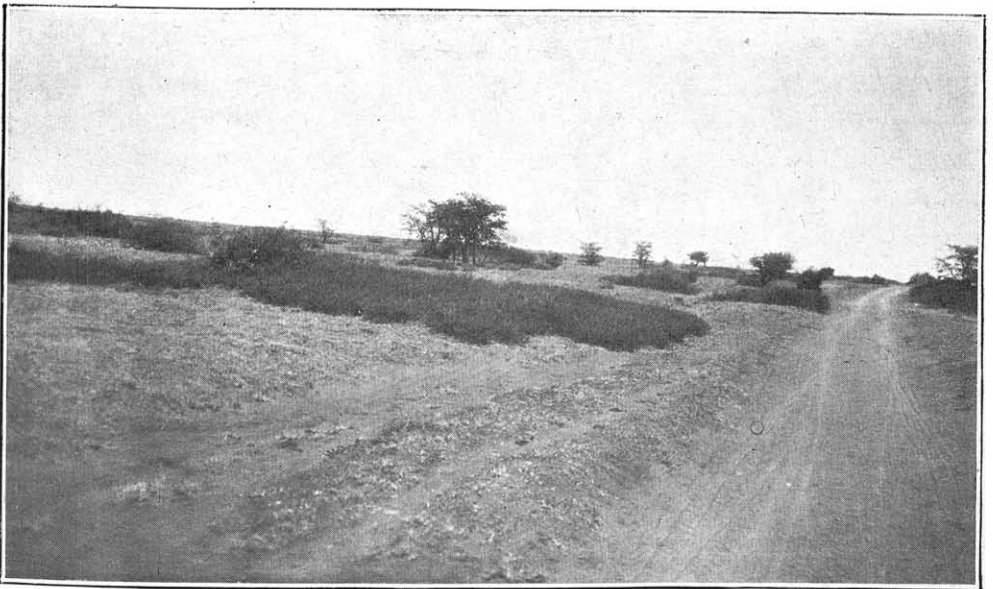
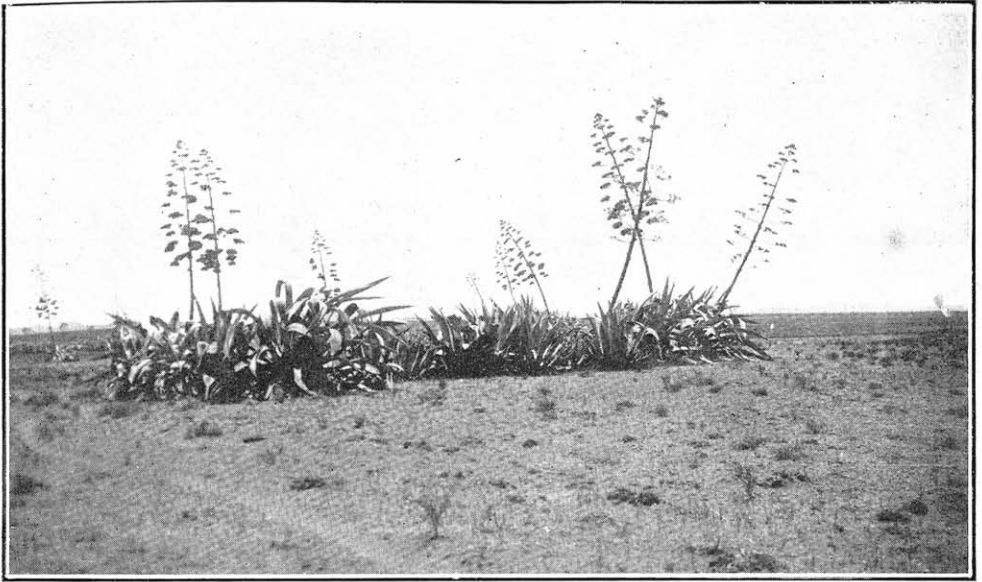


Plate No. 15.]
 Bushes eaten by Stock. B.—Terraschi-bosch (*Acacia stolonifera*) and young Kameel-doorns
 (*Acacia giraffae*), near Christiana.



Plants eaten by Stock. A.—American aloe or Garen-boom (*Agave americana*), in the Bloemfontein District.

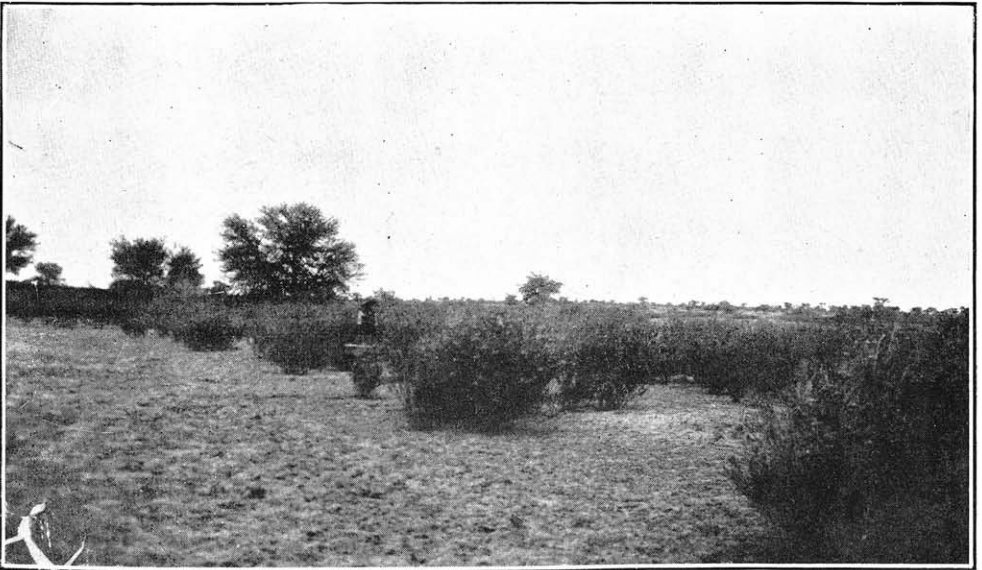


Plate No. 16.]
Plants eaten by Stock. B.—Milk-weed or Wilde kapok (*Asclepias fruticosa*), in a dry dam in Bechuanaland.



Types of Gebrokked veld, Albany Division. A.—Mixed bush-veld and grass-veld, south of Grahamstown.

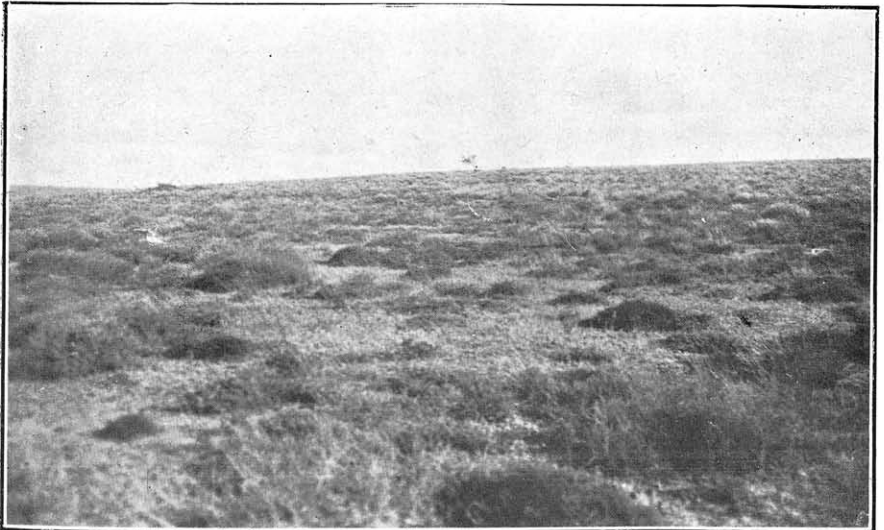
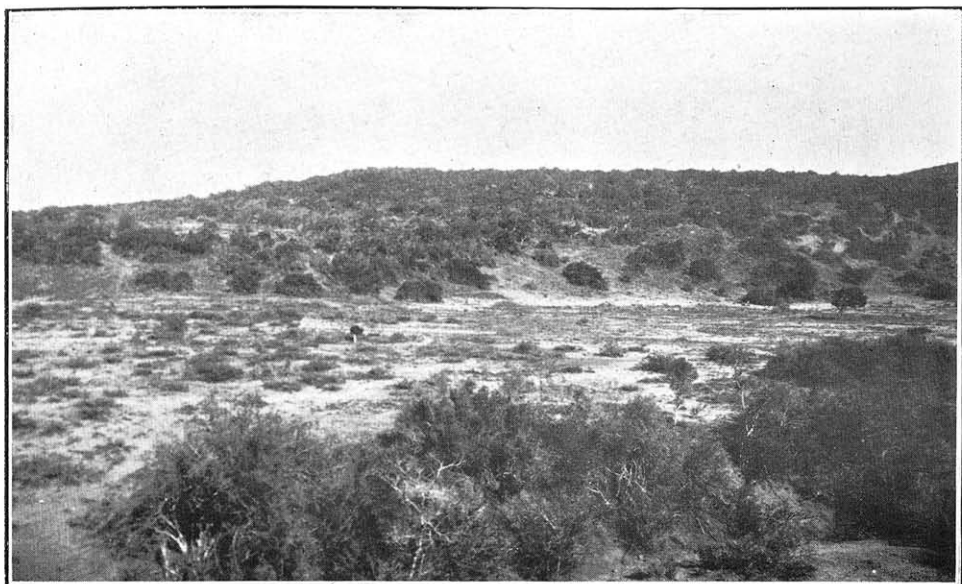
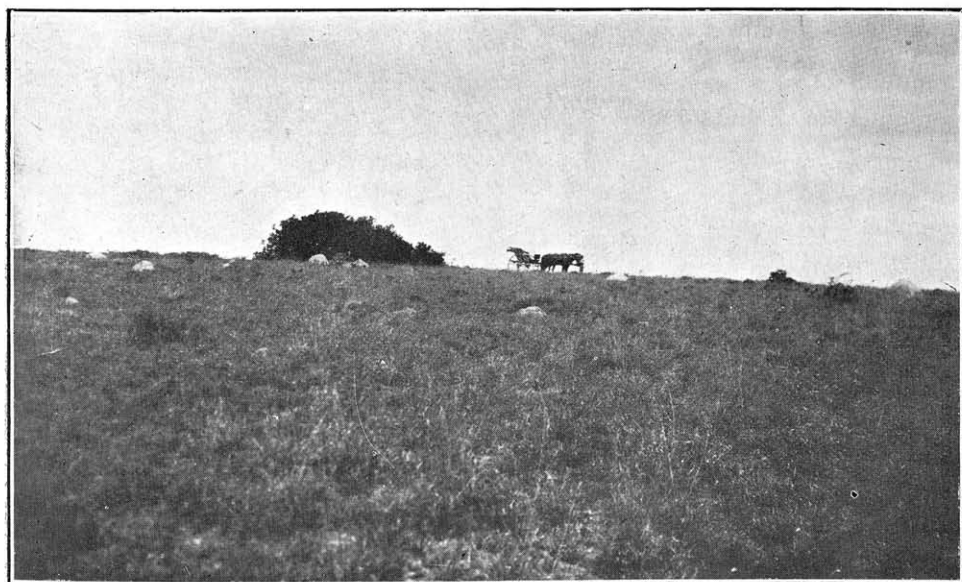


Plate No. 17.]

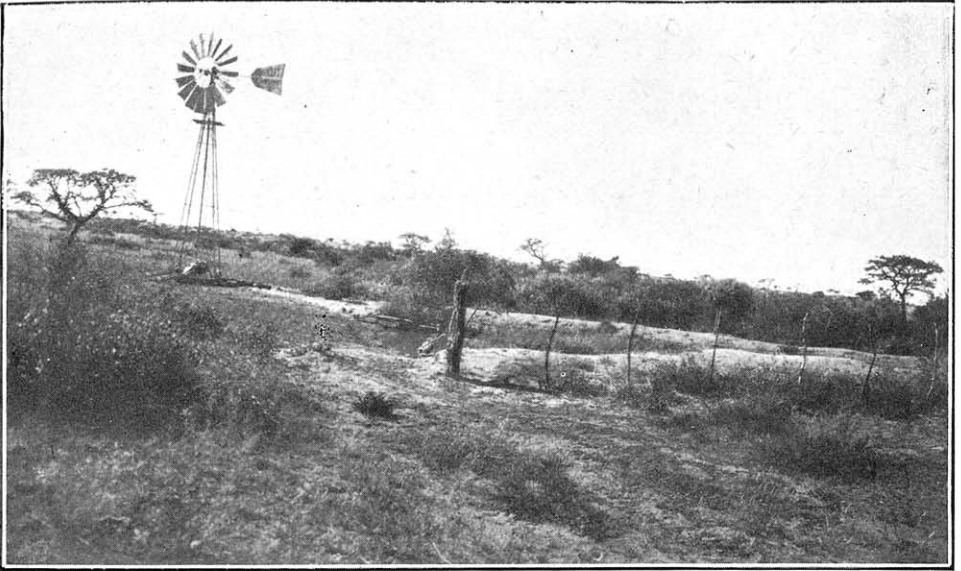
Types of Gebrokked veld, Albany Division. B.—Mixed Karroo-veld and grass-veld, north of Grahamstown.



Types of Veld, Alexandria Division. A.—In the "Addo Bush."



Types of Veld, Alexandria Division. B.—"Bonte-bosch veld."



Types of Bechuanaland veld. A.—Thorn-veld, Netherway, Armadillo Creek, Vryburg Division.

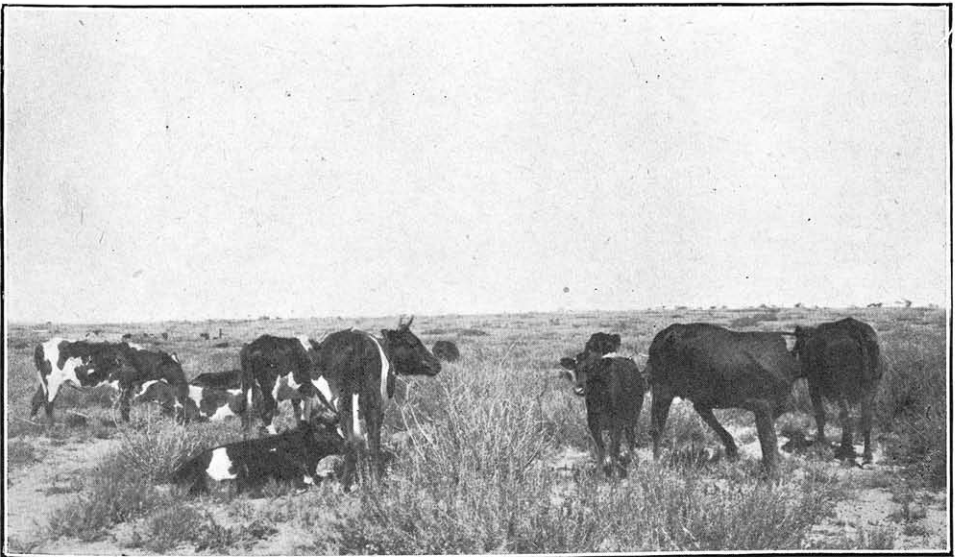
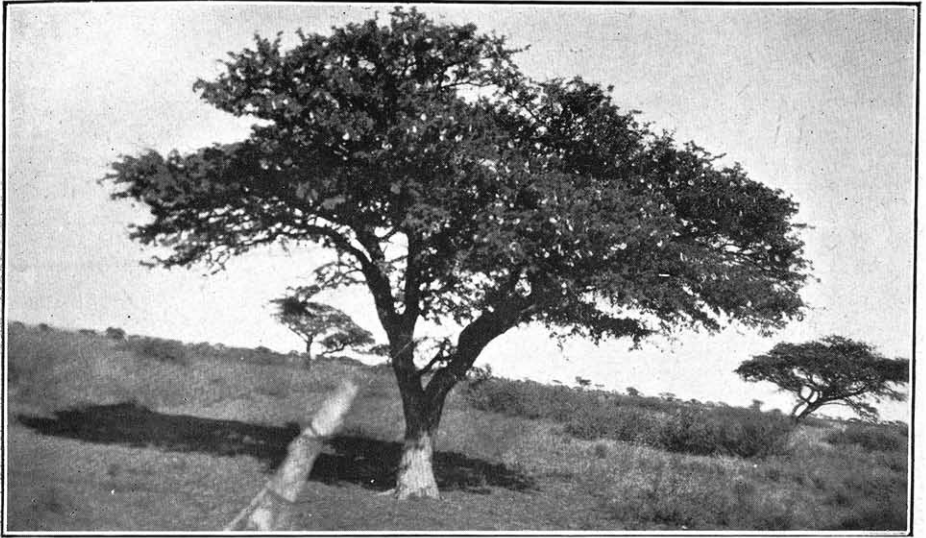


Plate No. 19.]
Types of Bechuanaland veld. B.—Mixed veld, Lolwanen, Vryburg Division.



Types of Bechuanaland veld. A.—Thorn veld of Kameel-doorn (*Acacia giraffæ*) with pods ;
Grewia cana and *Tarchonanthus camphoratus* beneath.

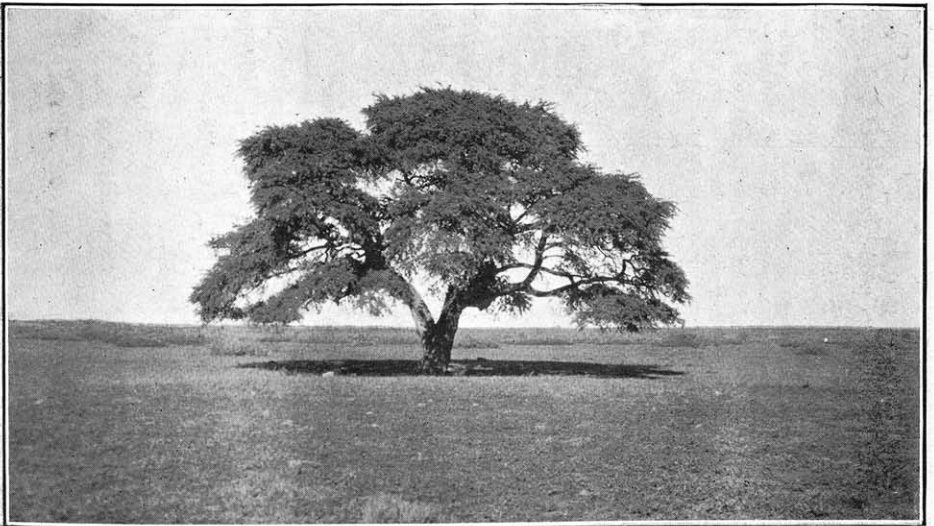
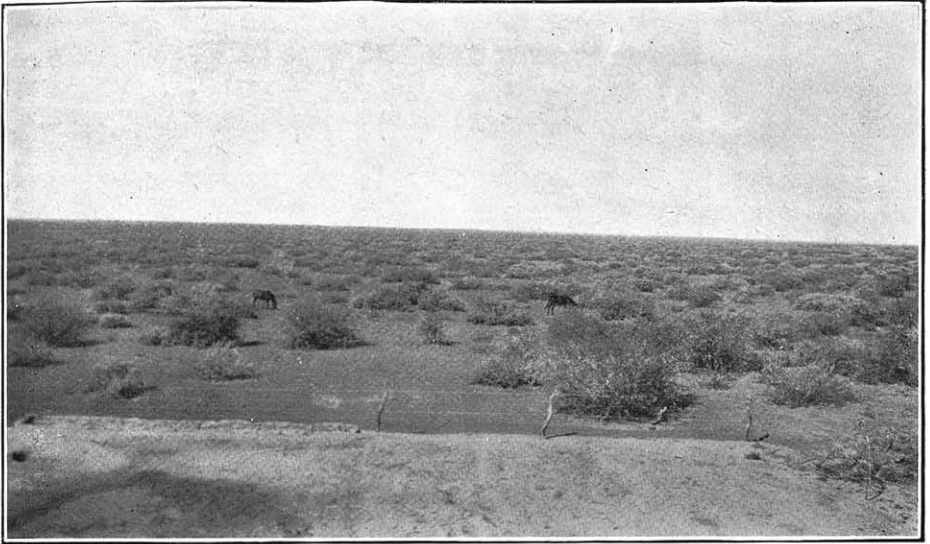


Plate No. 20.]

Types of Bechuanaland veld. B.—*Panicum Marlothii* in the Native Reserve, Litakun. The
 tree is a fine specimen of *Acacia giraffæ* known as the Dering tree, the Chief Dering having
 been buried at its foot ; this tree is 9 ft. in circumference at 5 ft. from the ground.



Types of Veld. A.—Vaal-bosch (*Tarchonanthus*), veld at Armadillo Creek, Vryburg Division, as seen from a windmill.

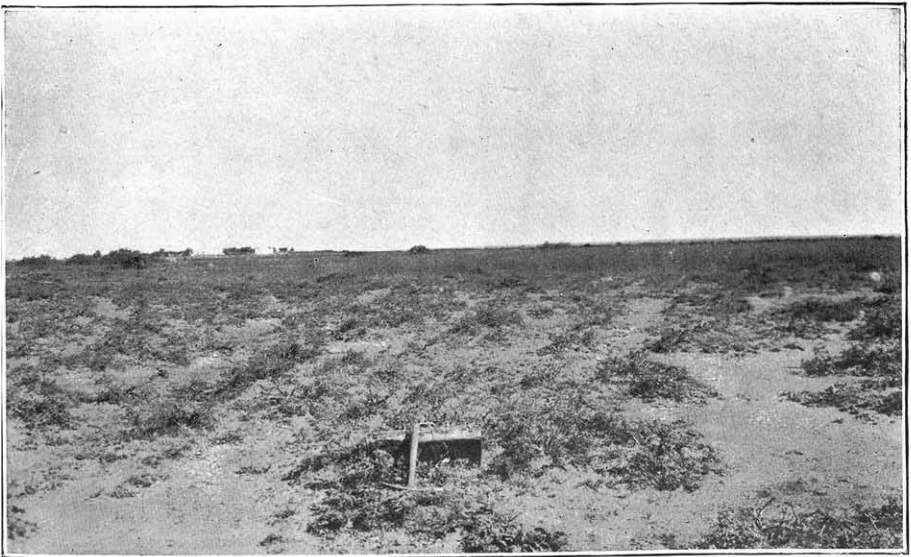


Plate No. 21.]

Types of Veld. B.—Brak-ganna (*Salsola aphylla*) veld at Kaffraria, Christiana.



Types of Sour-veld. A.—At Kaffraria, Christiana. The long grass in flower is *Cymbopogon excavatus*.

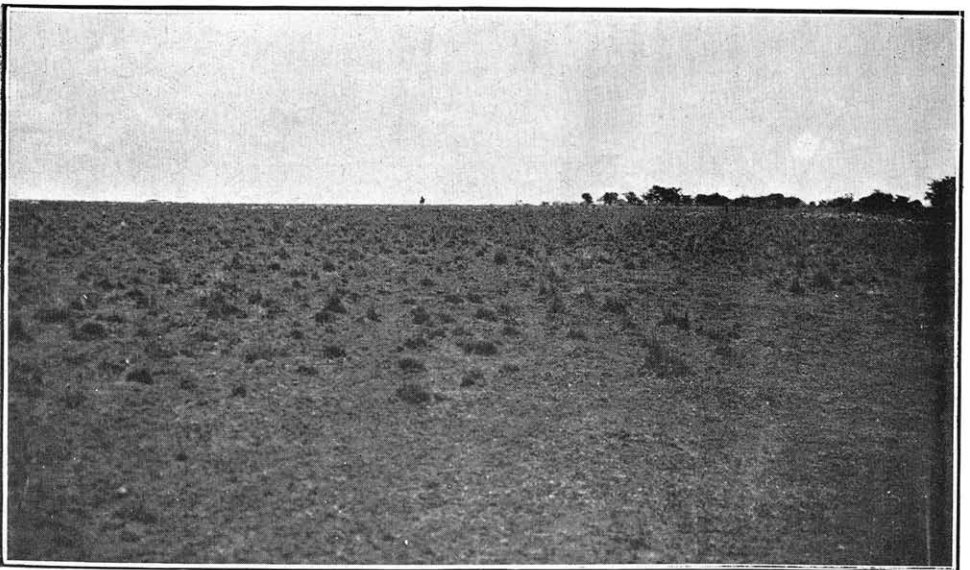
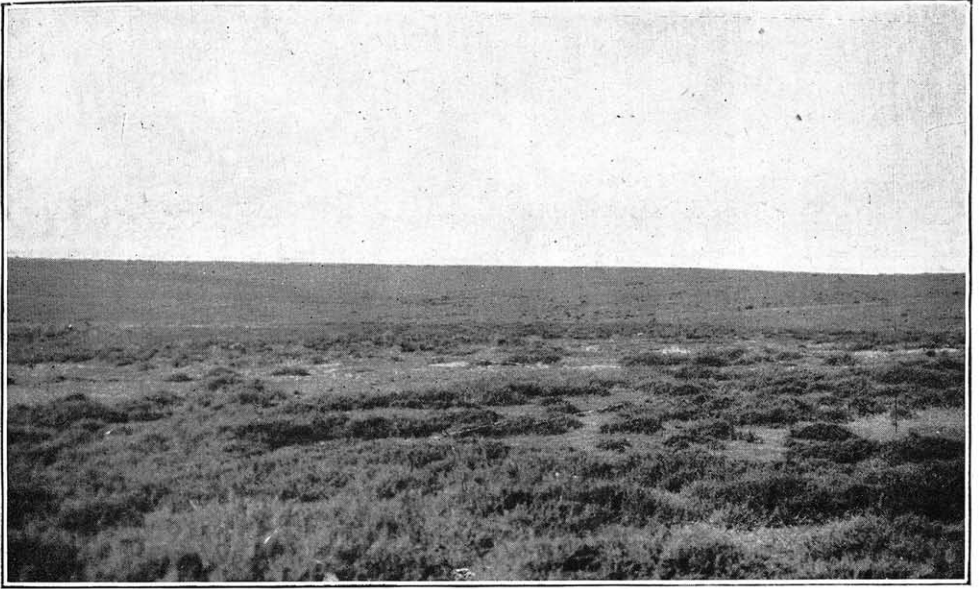
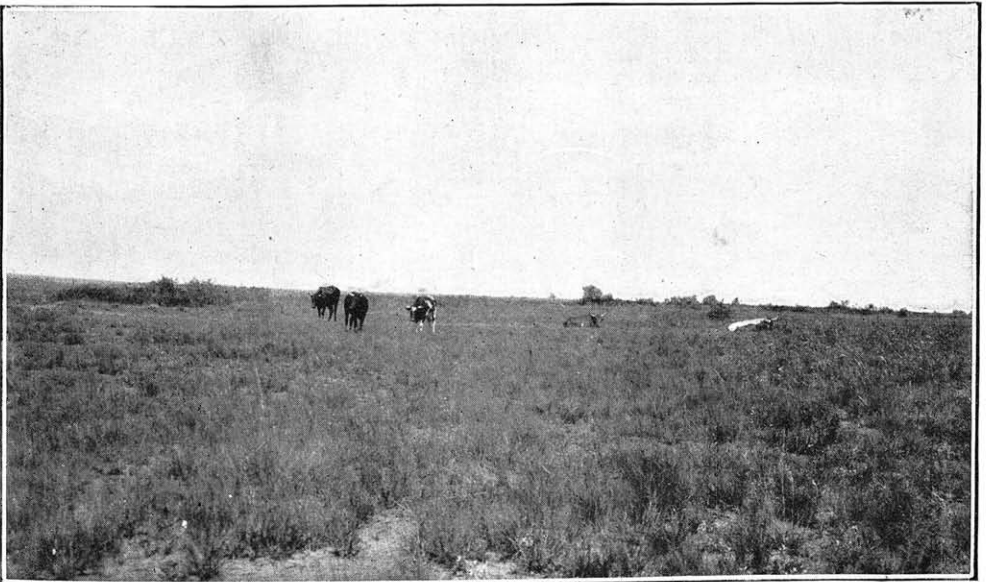


Plate No. 22.]

Types of Sour-veld. B.—Sour-veld after close camping. Near Schweizer Reineke.



Types of Veld. A.—Sweet Karroo-bush veld, north of Grahamstown.



Types of Veld. B.—Sour grass-veld at Kaffraria. Christiana.



Types of River Veld. A.—Vaal River below Christiana.

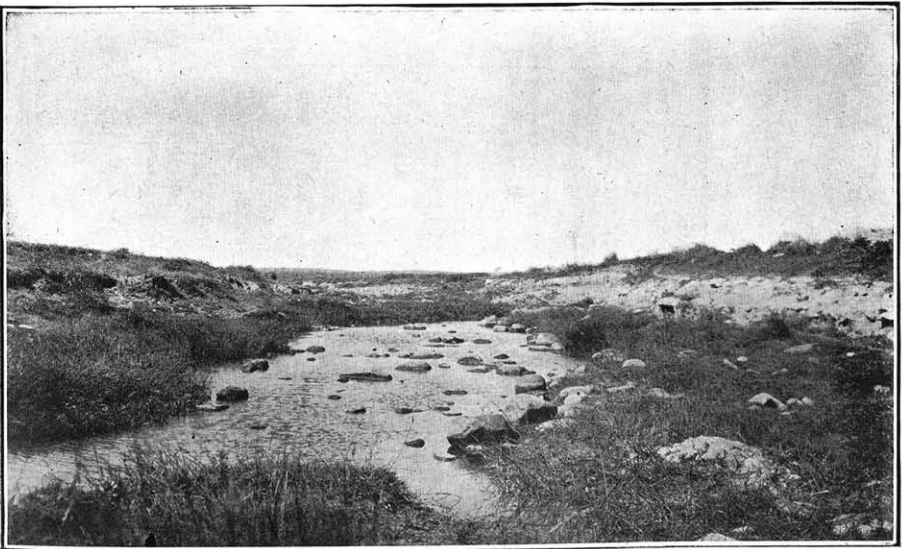


Plate No. 24.]

Types of River Veld. B.—Moshowing River, Litakun.



Werf Vegetation. A.—*Cynodon incompletus* in the Alexandria Division.

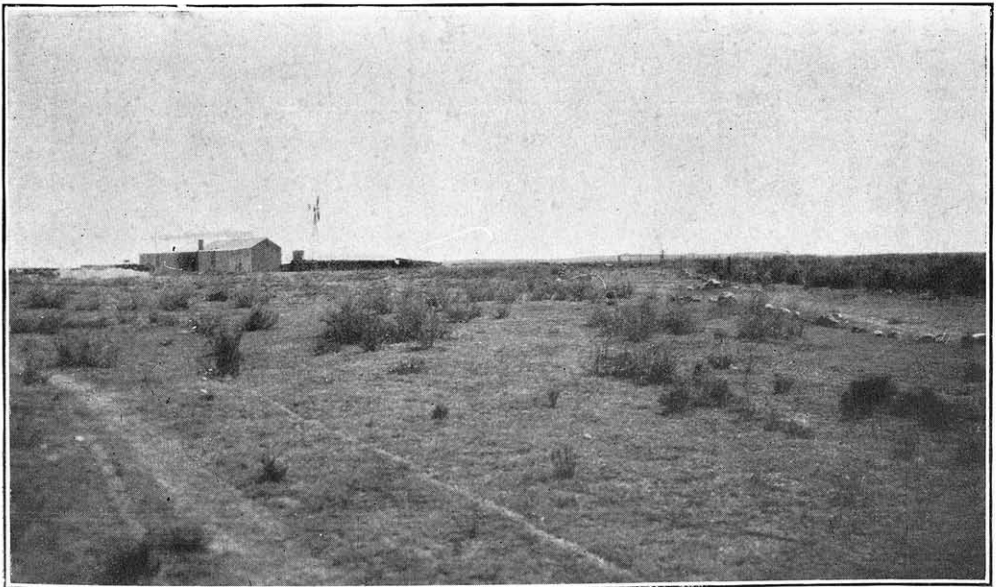
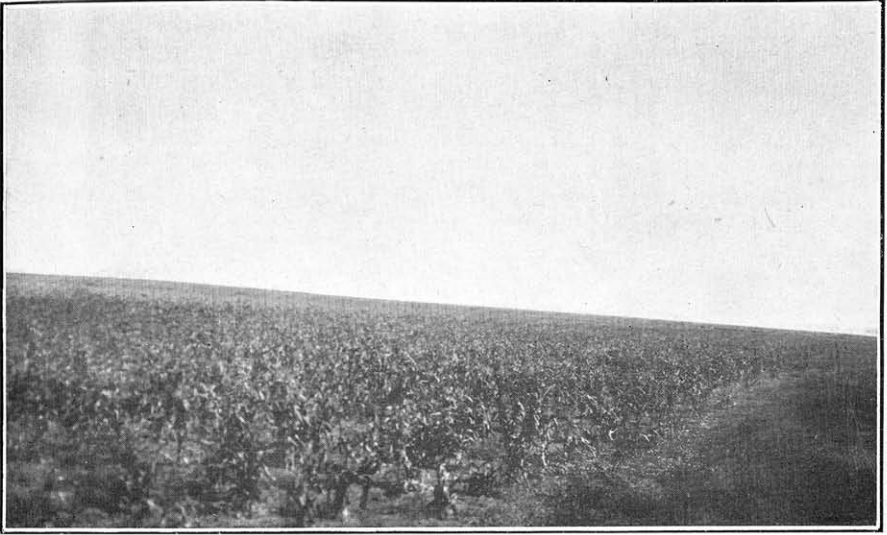
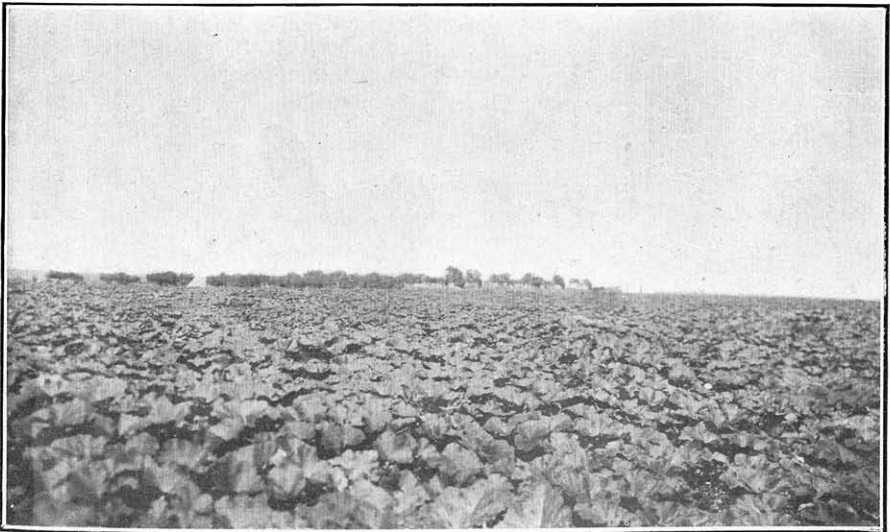


Plate No. 25]

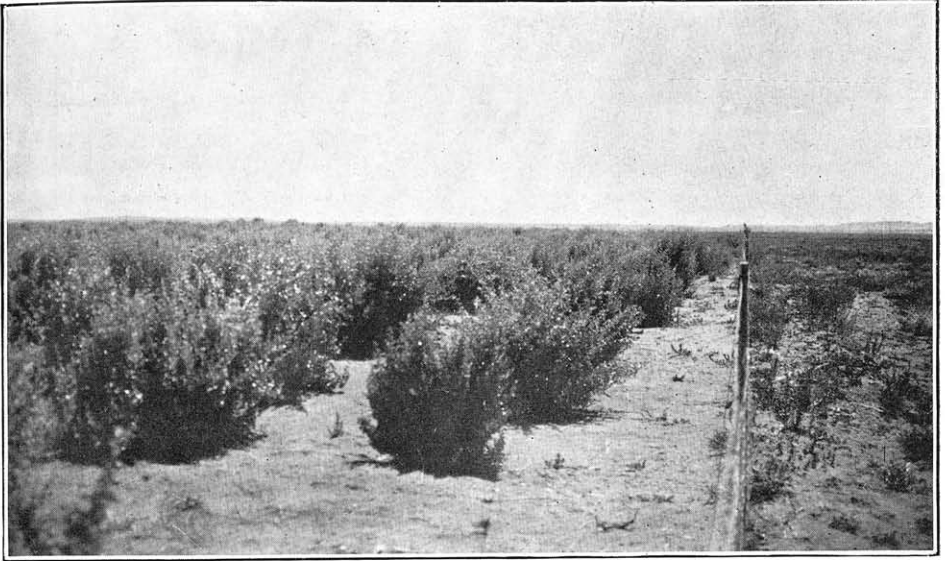
Werf Vegetation. B.—Mixed grass and Springbok bosje (*Othonna pallens*), Bester's Put.



Winter Food-stuffs. A.—Field of maize fodder. Kaffraria, Christiana.



Winter Food-stuffs. B.—Field of pumpkins, also at Kaffraria.



Winter Food-stuffs. A.—Round-leaved salt bush (*Atriplex nummularia*) cultivated at Bester's Put.

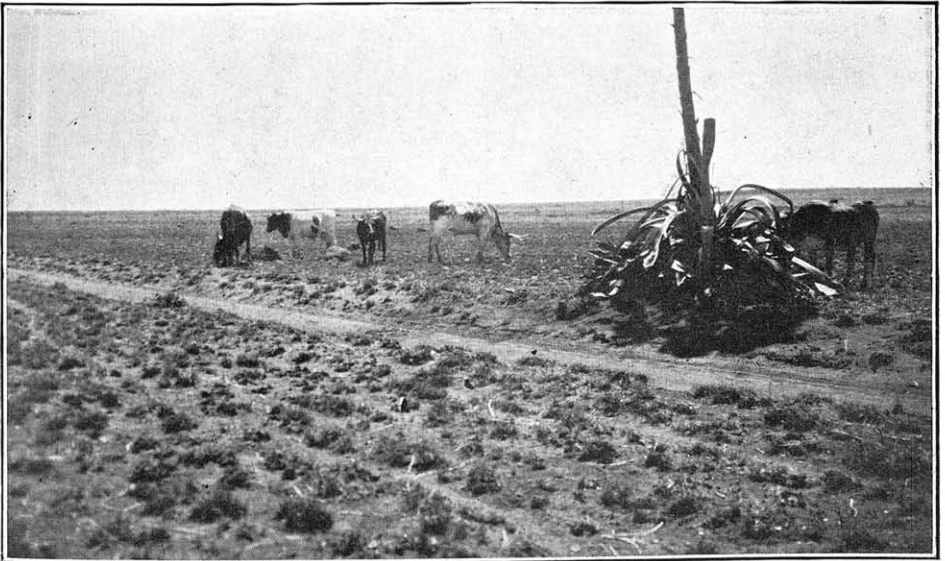


Plate No. 28.]
Winter Food-stuffs. B.—American Aloe or Garen-boom (*Agave americana*) being browsed by cattle, near Bester's Put. The animals to the left were eating pieces of leaves torn off from the old plant.

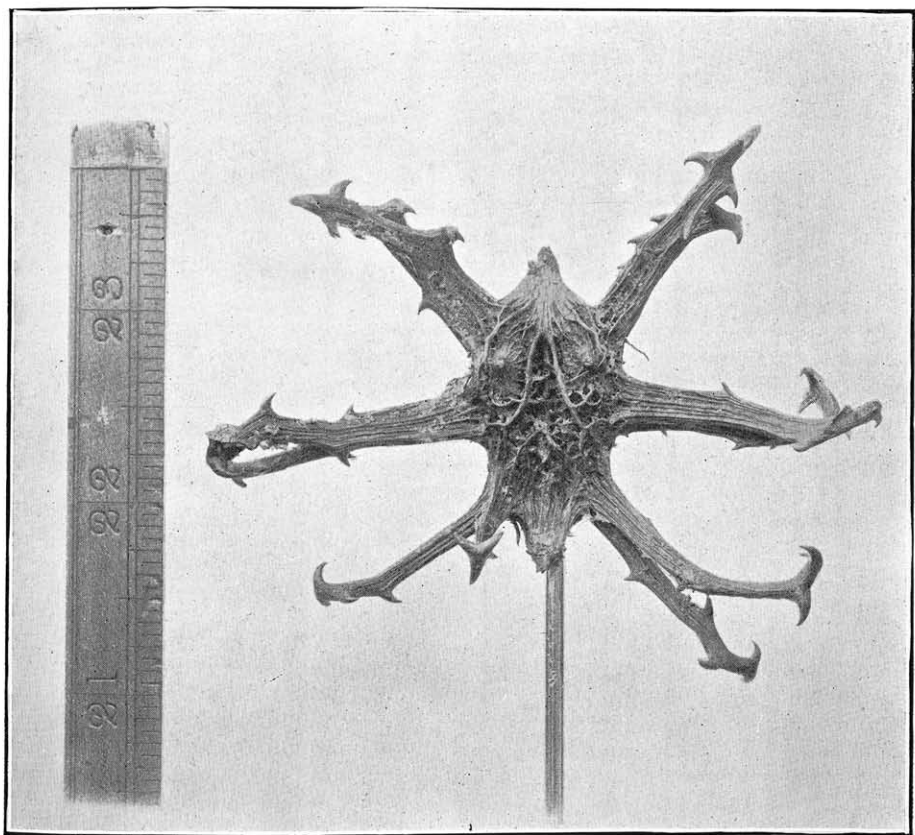


Plate No. 29.]
Harpagophytum procumbens DC. Grapple plant ; Klaauwdoorns. Panfontein, Kimberley Division.

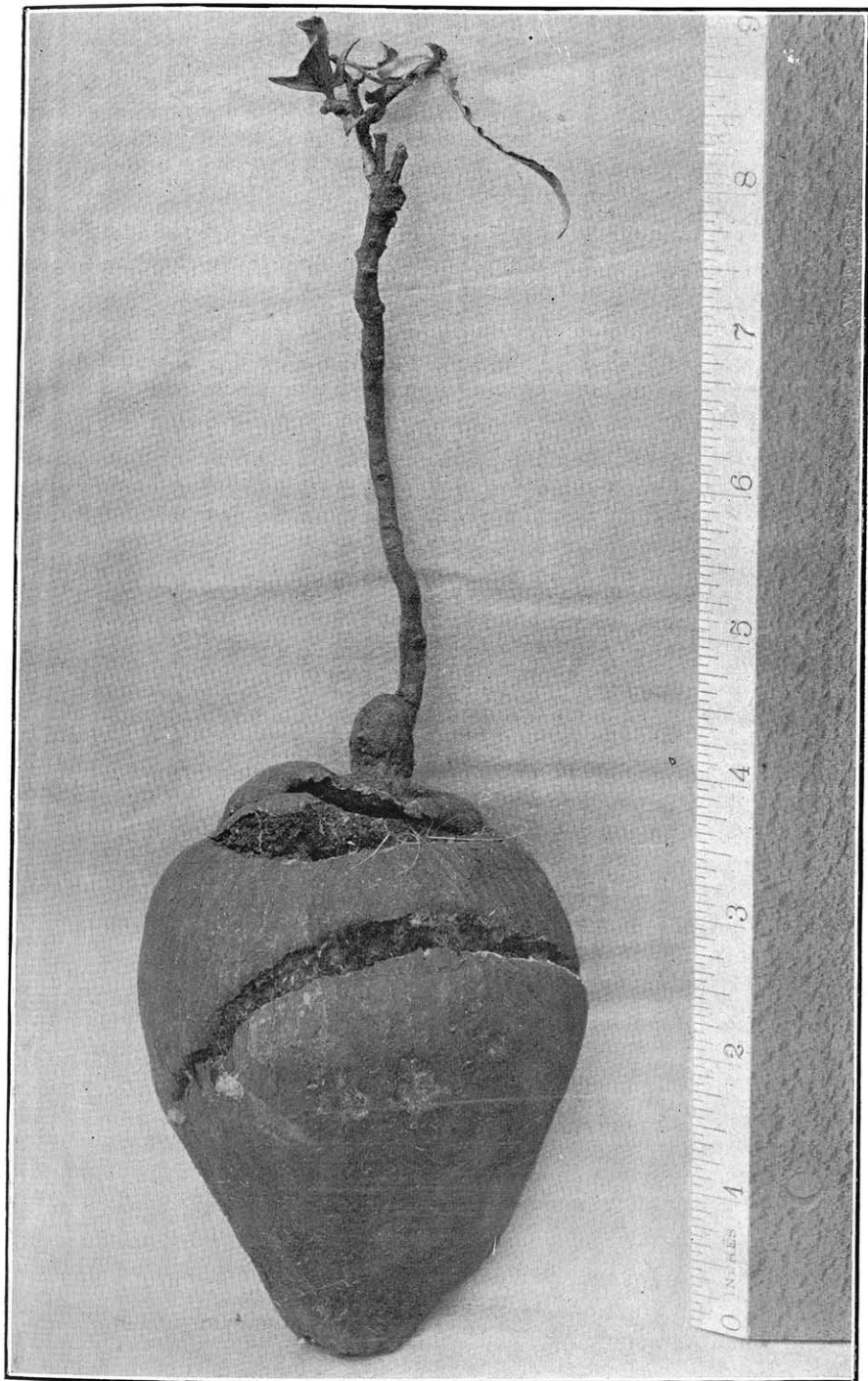


Plate No. 30.]

Harpagophytum procumbens DC.

Grapple plant, Klauwdoorns.

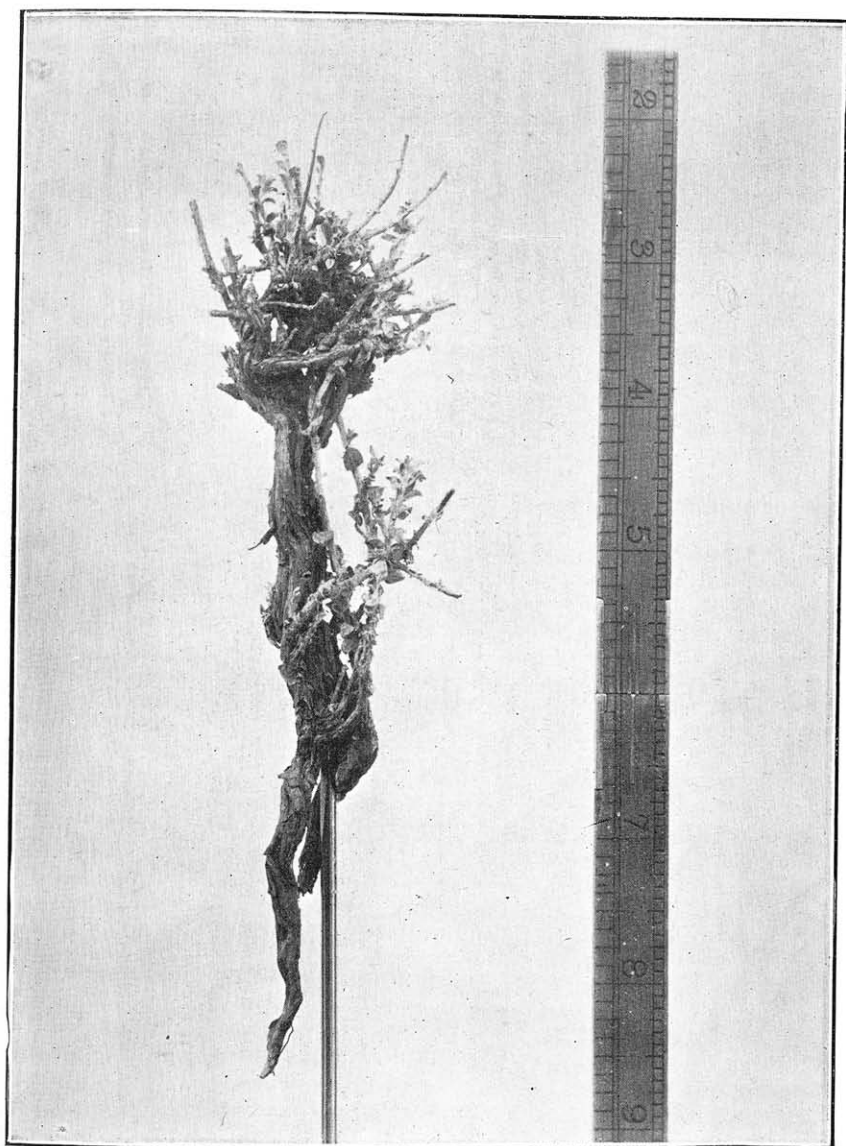


Plate No. 31.]

Hermannia Zeyheri Less.

A shrublet much browsed by stock, Gannavlake.

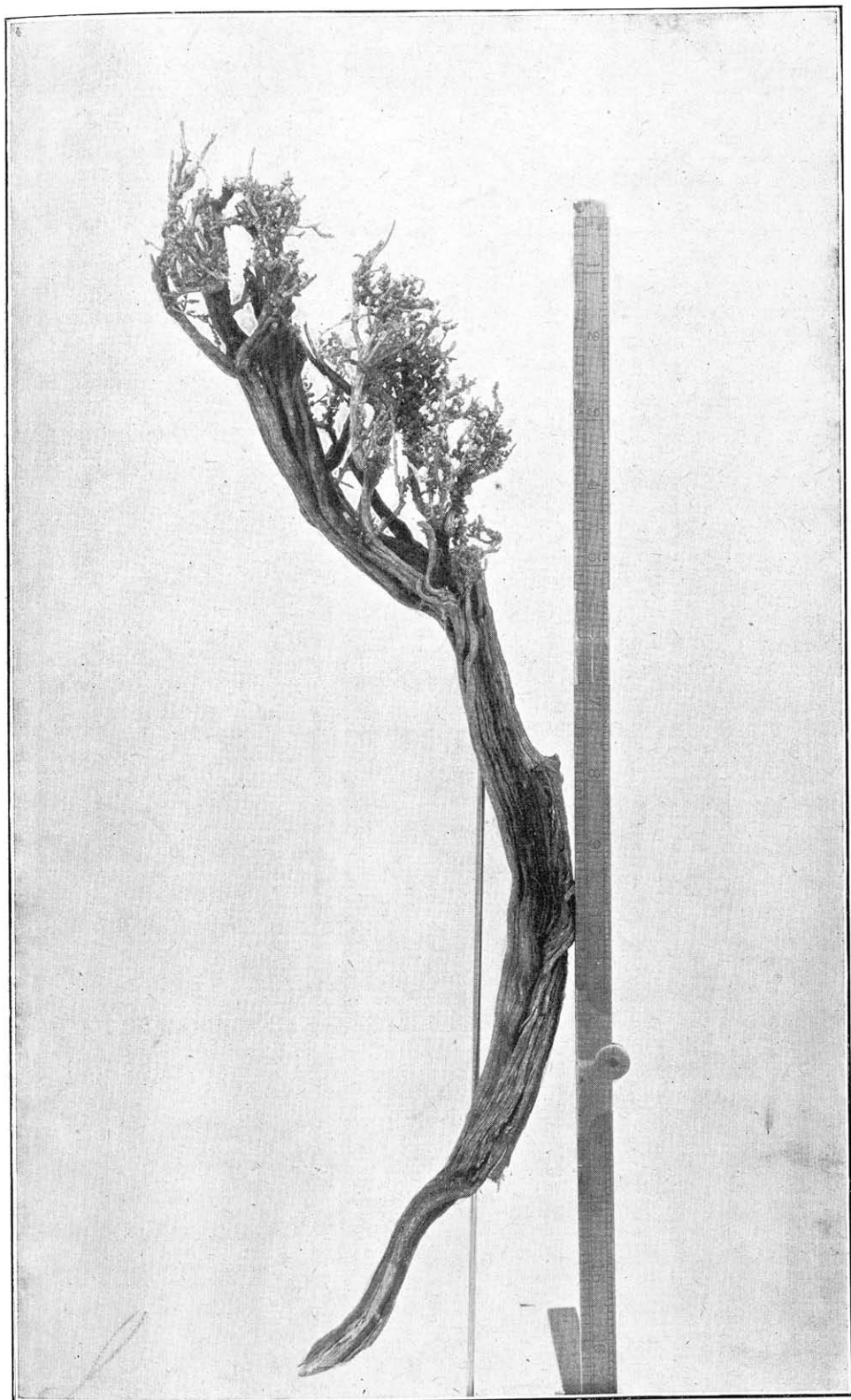


Plate No. 32.]

Salsola aphylla Linn. f. Brak-ganna A favourite fodder plant. Note how closely it has been browsed back to the old wood, Near Vaal River at Smits Kraal.

Plants eaten by Stock. (*Gomphostigma scoparioides*)

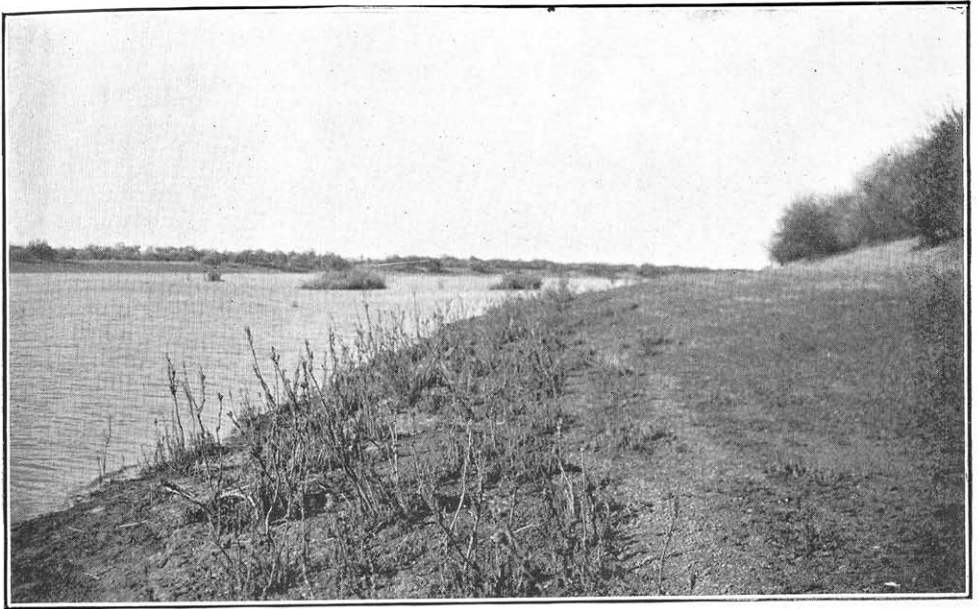


Plate No. 33.]

A.—Zone of *Gomphostigma scoparioides* above winter low-water mark. Much browsed by stock. Near Christiana.

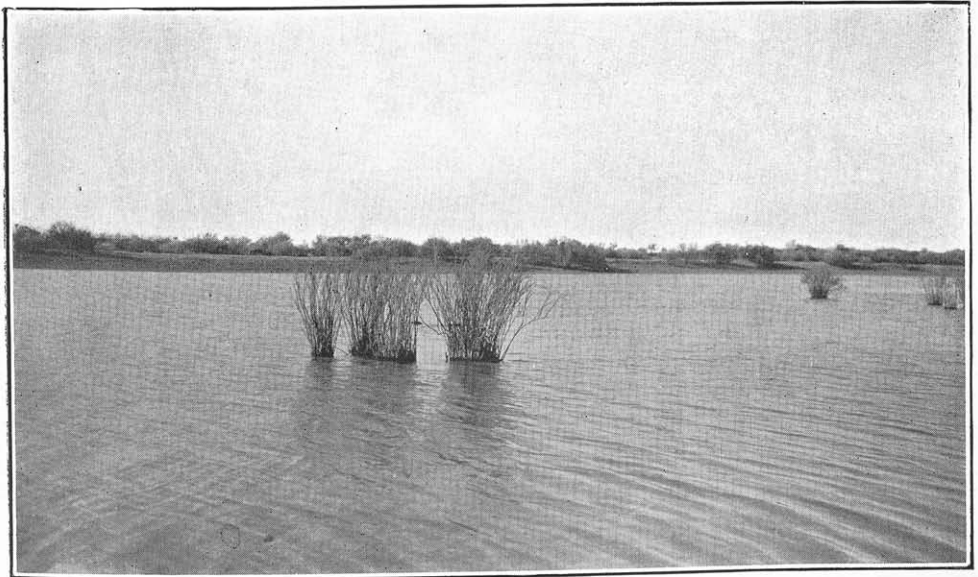


Plate No. 33A.]

B.—*Gomphostigma* in a shallow place in the river, showing winter growth when protected from stock. Near Christiana.