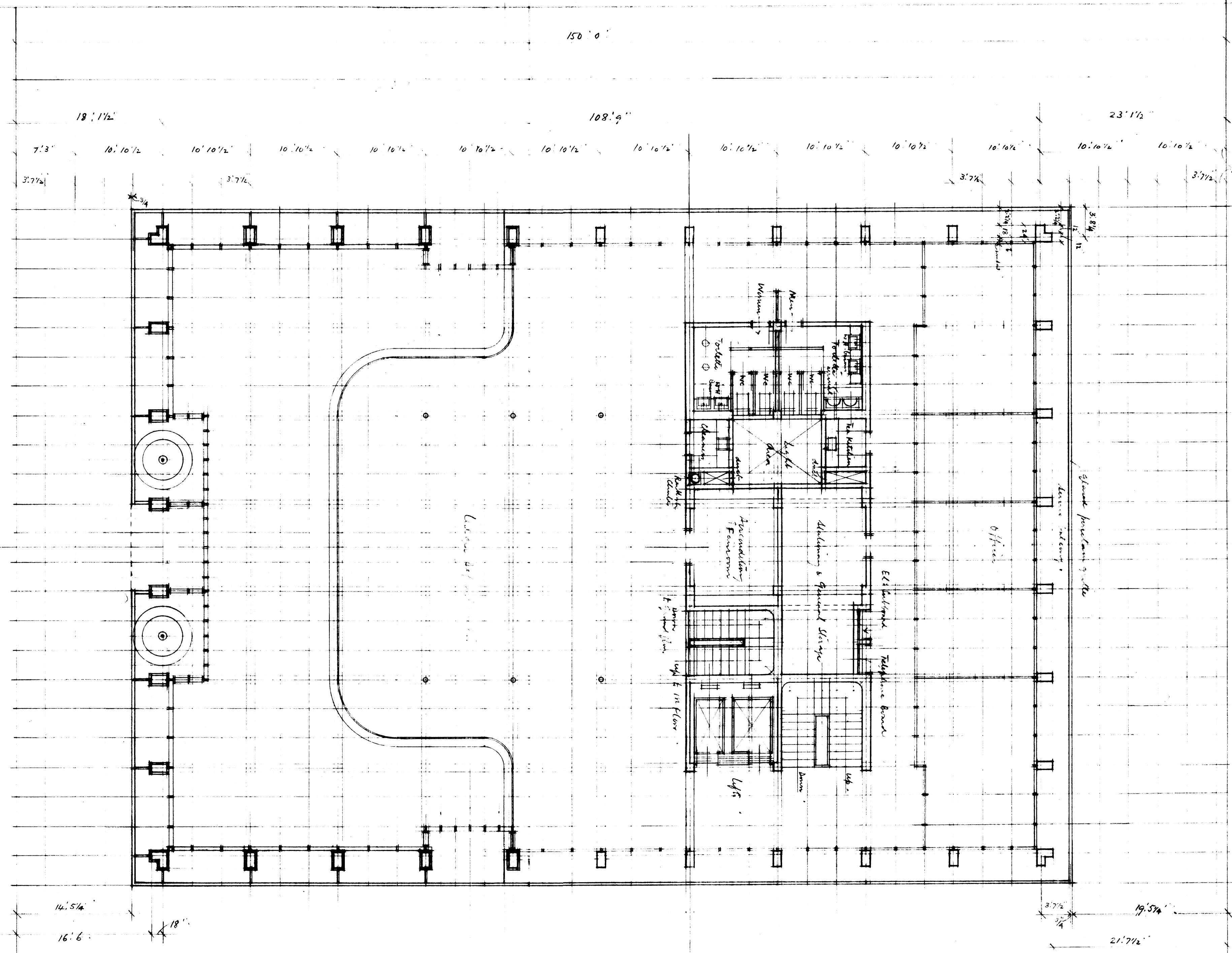


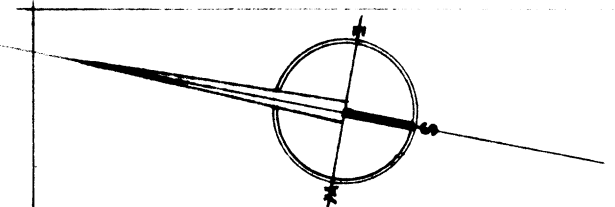
NEW BANK BUILDING at the corner of SMITH STREET and CLUB ARCADE for the NETHERLANDS BANK of S.A. LIMITED.
EIGHTH INCH SCALE PRELIMINARY DRAWING. NORMAN EASTON & LOUW. ARCHITECTS. REGINA. FEBRUARY 1912

PLAN of MEZZANINE FLOOR



14.5 1/4
16.6
18"

3.7 1/2
19.5 1/4
21.7 1/2



DRAWING No P. 297/3