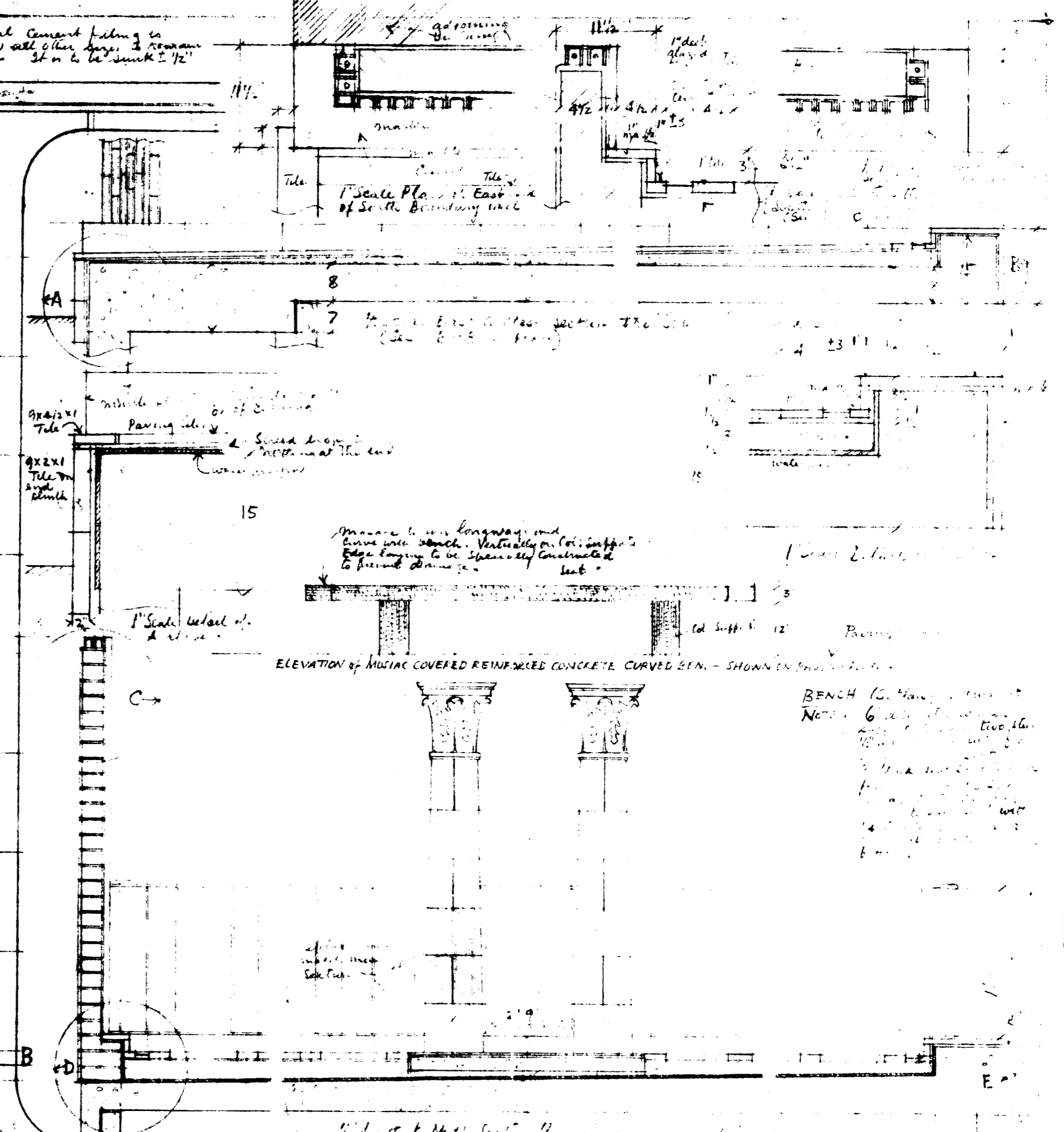
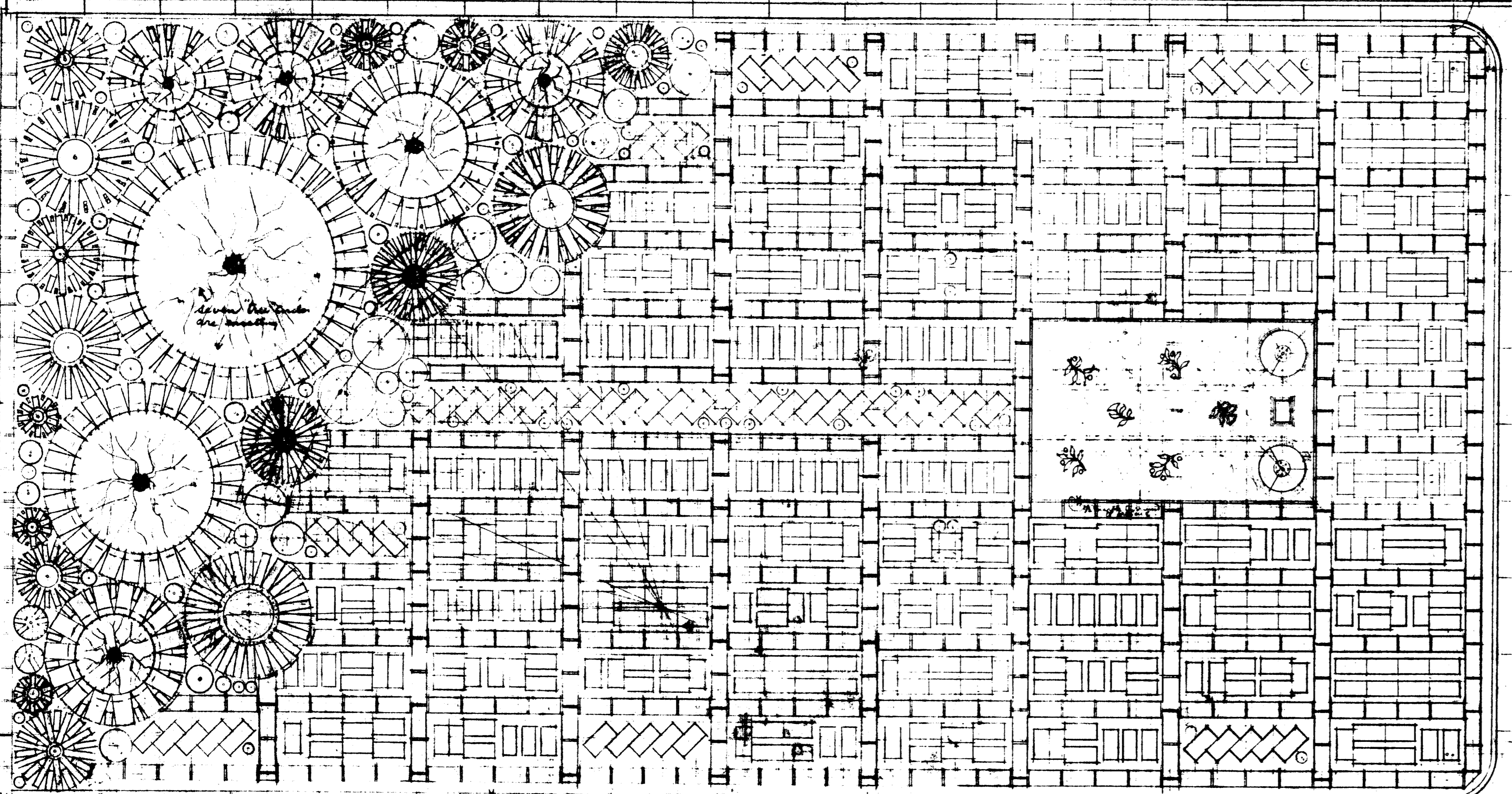


Existing adjoining building

Note: Large mosaic circle panel with two Corinthian columns shown are part of the old mosaic floor and should be specially saved from Club Arcade, same drawings and are to be repaired and set in position in careful consultation with the architect as a memorial to the historic arcade.

This 1/3 marginal cement filling is variable to allow all other pipes to remain in correct position - 3/4" to 1" thick 1/2"



South side boundary

Seven trees under the canopy

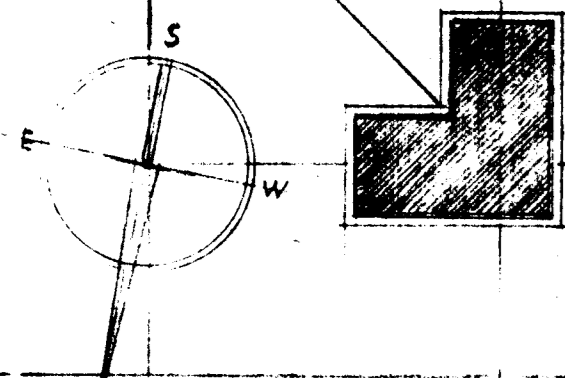
mobile plants to back

1" marble margin to paving at base of plants

Units for pannelled paving pattern generally are 9 x 4 1/2 x 1" "Corinthian" brick tiles of red and brown colours as attached samples. Circular "petal" pattern also 9" long & 1" thick generally but are 3/4" x 3/4" and 1/2" wide as may be shown and arranged in various colours as will be decided by architect set up side down in mortar bed.

"Petal" lengths are sometimes reduced by cutting to 4" and 3" as may be shown. Plain interspace circles are red, terracotta, standard flower pot samples of various diameters shown (from 2" to 16"). Tiles with 1/2" of paving.

All notes on DWG N° P. 297/67 dealing with method of laying tiles filling under pattern spaces to be set in place and applied to the above paving and must be very carefully read 9/8" steel gauge and 3/7" x 1/7" panel cutter all in for roof.



NORWYLL EATON & LOUW ARCHITECTS, PRETORIA.

NEW NETHERLANDS BANK BUILDING, SOUTH SIDE

BRICK PAVED SOUTH GROUND FLOOR SHOWING TREE POCKETS AND OLD ARCADE MEMORIAL MOSAIC & COLONNAD

SCALE 1/4" = 1'-0" DATE MARCH 1965

P. 297/67