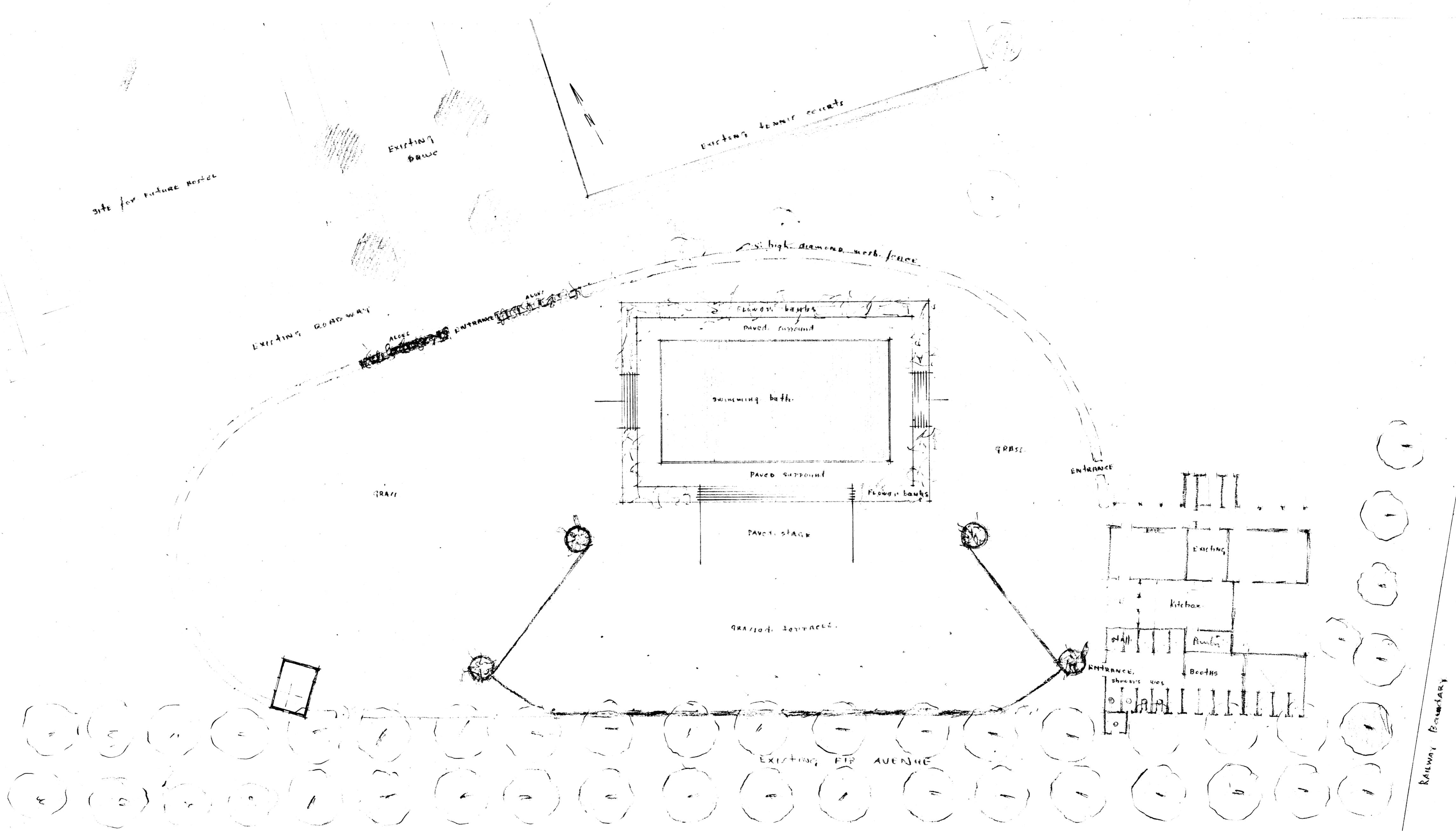
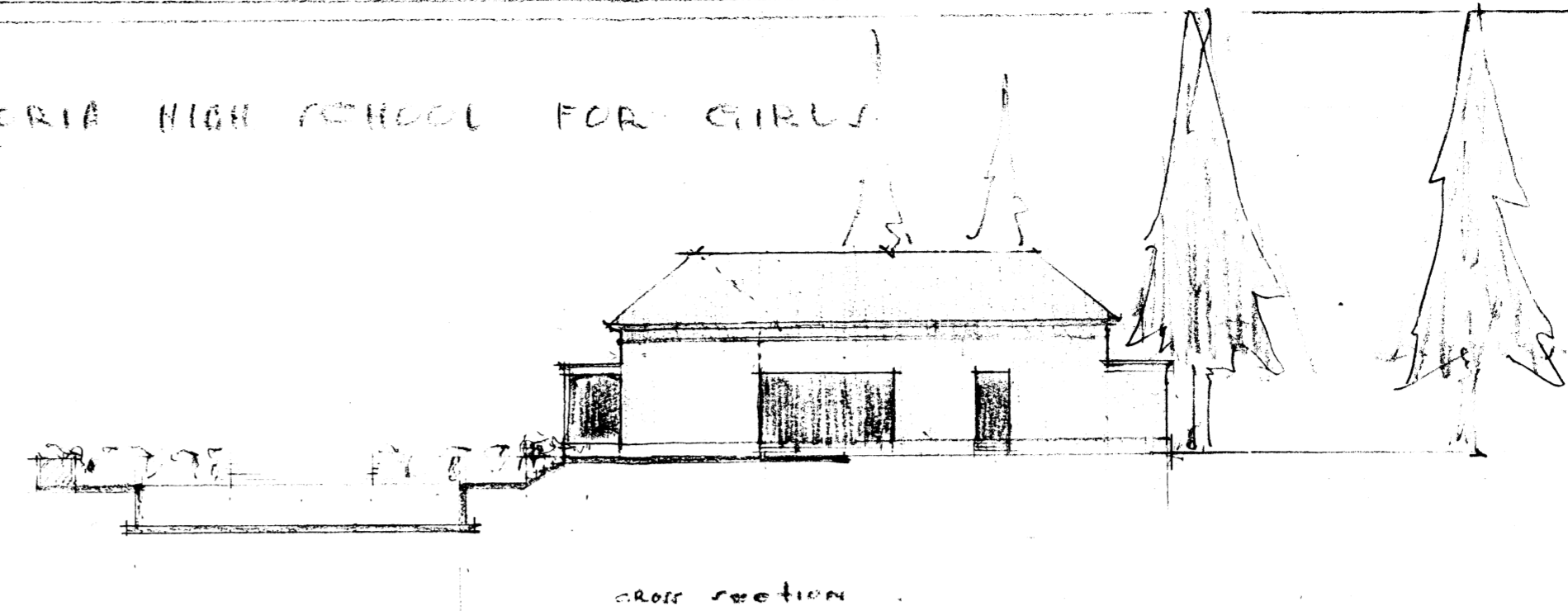


NEW SWIMMING BATHS AND BOOTHS AND FUTURE OPEN AIR THEATRE FOR THE VICTORIA HIGH SCHOOL FOR GIRLS
1/2 scale revised sketch plan.

DRAWING No. P4 267p
 9.6.36.



DRAWN OUT IN THE OFFICE OF
 NORMAN EATON ARCHT. & ENGRS.
 CHARTERS & ARCHITECTS
 30 GREYHAWK BUILDINGS
 VICTORIA.

A. V. SUMM - ARIBA
 consulting architect
 hampden chambers
 victoria