

Fig. 1.—Bovine 607, East Coast Fever, blood from jugular vein, karyorrhexis in lymphocyte (May Grunwald-Giemsa), magnification 1200 \times .
(The cellbody is greyish blue, the nuclear debris purplish red.)

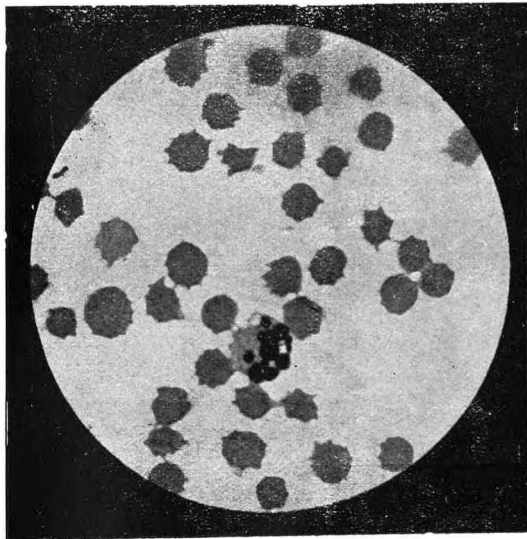


Fig. 2. Bovine 607, East Coast Fever blood from jugular vein, karyorrhexis in white cell (May Grunwald-Giemsa), magnification 1200 \times .
(Cellbody light pink, nuclear debris purple.)
East Coast Fever. [W. Steek.]

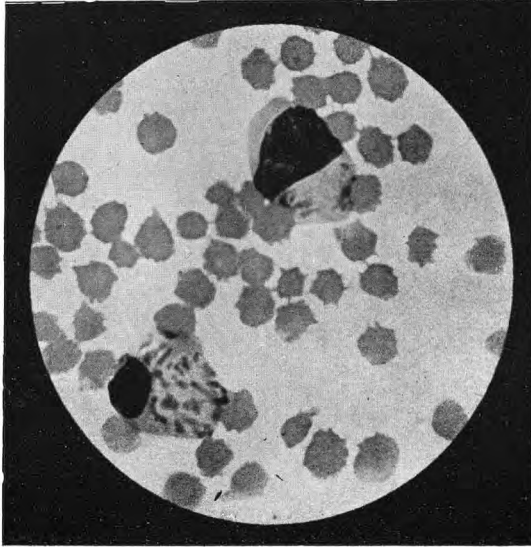


Fig. 3.—Bovine 607, East Coast Fever, blood from splenic vein, two lymphocytes, one with pyknosis of nucleus and *Theileria parva* (May Gruenwald-Giemsa), magnification 1200 \times .

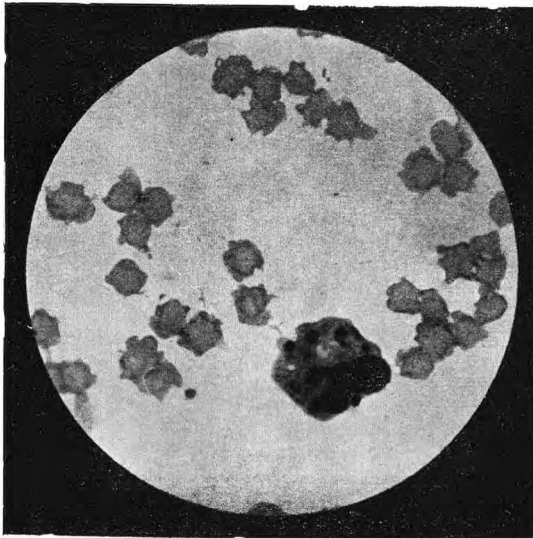


Fig. 4.—Bovine 607, East Coast Fever blood from pulmonary vein, karyorrhexis in lymphocyte (May Gruenwald-Giemsa) cytoplasm grey blue, nuclear, debris purple, magnification 1,200 \times .

East Coast Fever.]

[*W. Steek.*

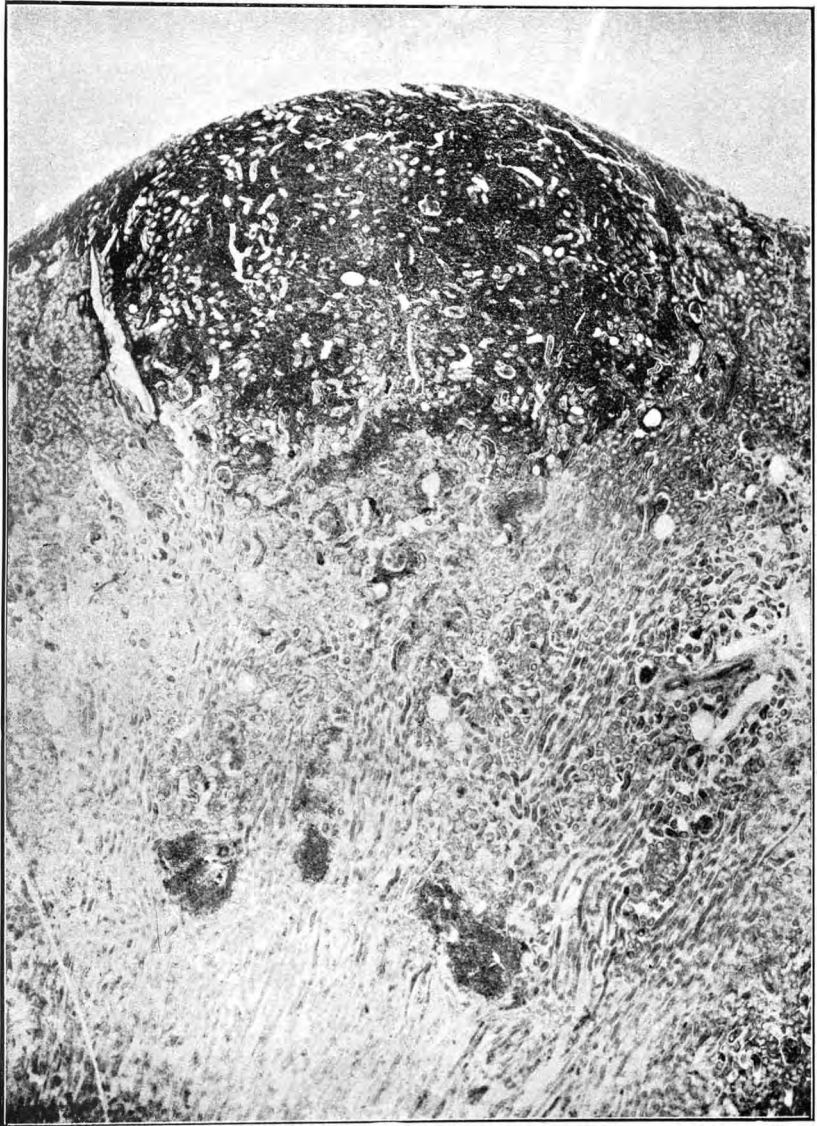


Fig. 5.—Kidney. East Coast Fever. (Haemalum-van Gieson) microscopical focus. Low magnification.
East Coast Fever. [W. Steek.]



Fig. 6.—Kidney. East Coast Fever (Haemalum-Eosin) large cortical focus.
East Coast Fever. [W. Steck,



Fig. 7.—Kidney. East Coast Fever. (Haemalum-Eosin) Periphery of microscopical focus, the cellulation following small arteries, magnification 80 \times .

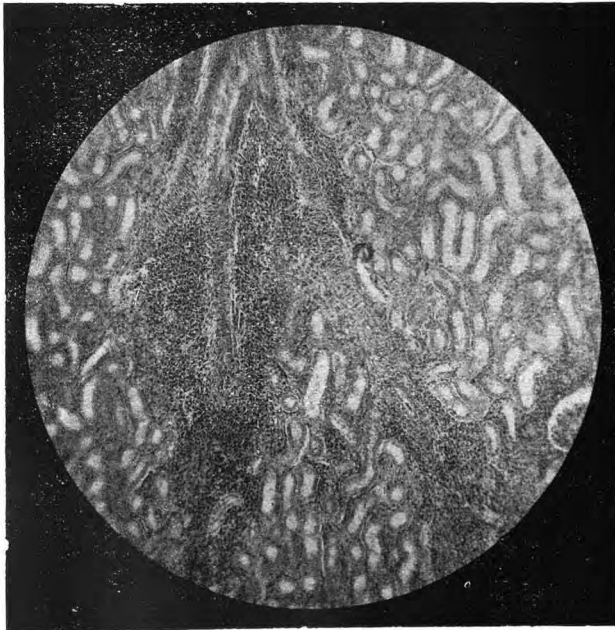


Fig 8.—Kidney. East Coast Fever. (Haemalum-Eosin) periarterial cellulation in the neighbourhood of a microscopical focus. magnification 55 \times .

East Coast Fever.]

[*W. Steek.*

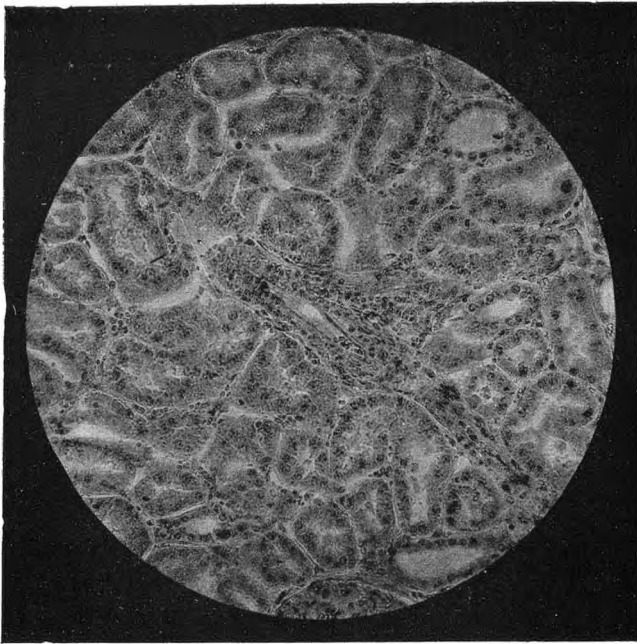


Fig. 9.—Kidney. East Coast Fever. (Haemalum-Eosin) slight perivascular cellulations, magnification 160 \times .

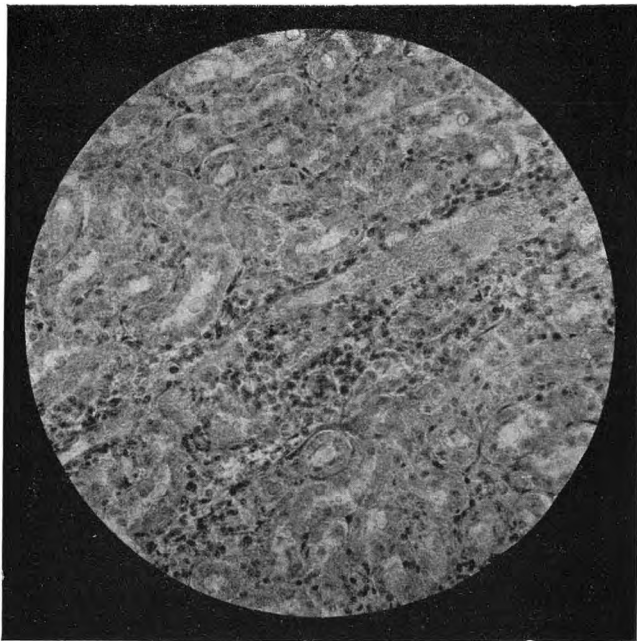


Fig 10.—Kidney. East Coast Fever. Cellulation alongside a widened vein, magnification 160 \times .
East Coast Fever.]

[*W. Steck.*



Fig 11.—Kidney. East Coast Fever (Haemalum-Eosin) cellulation in artery fork, magnification 160 \times .

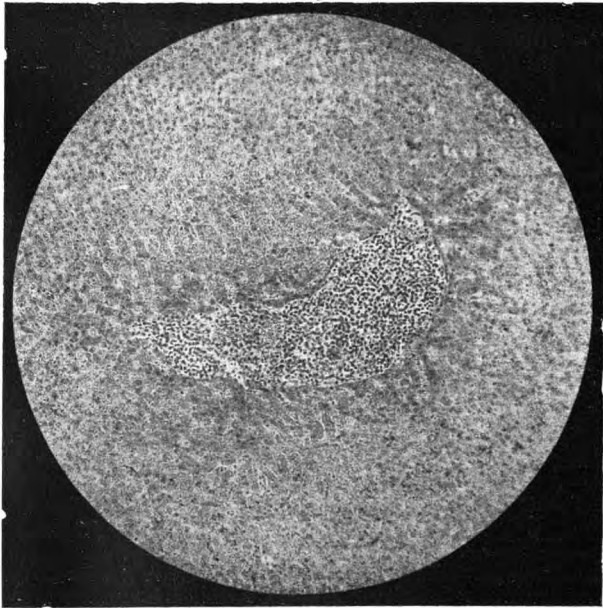
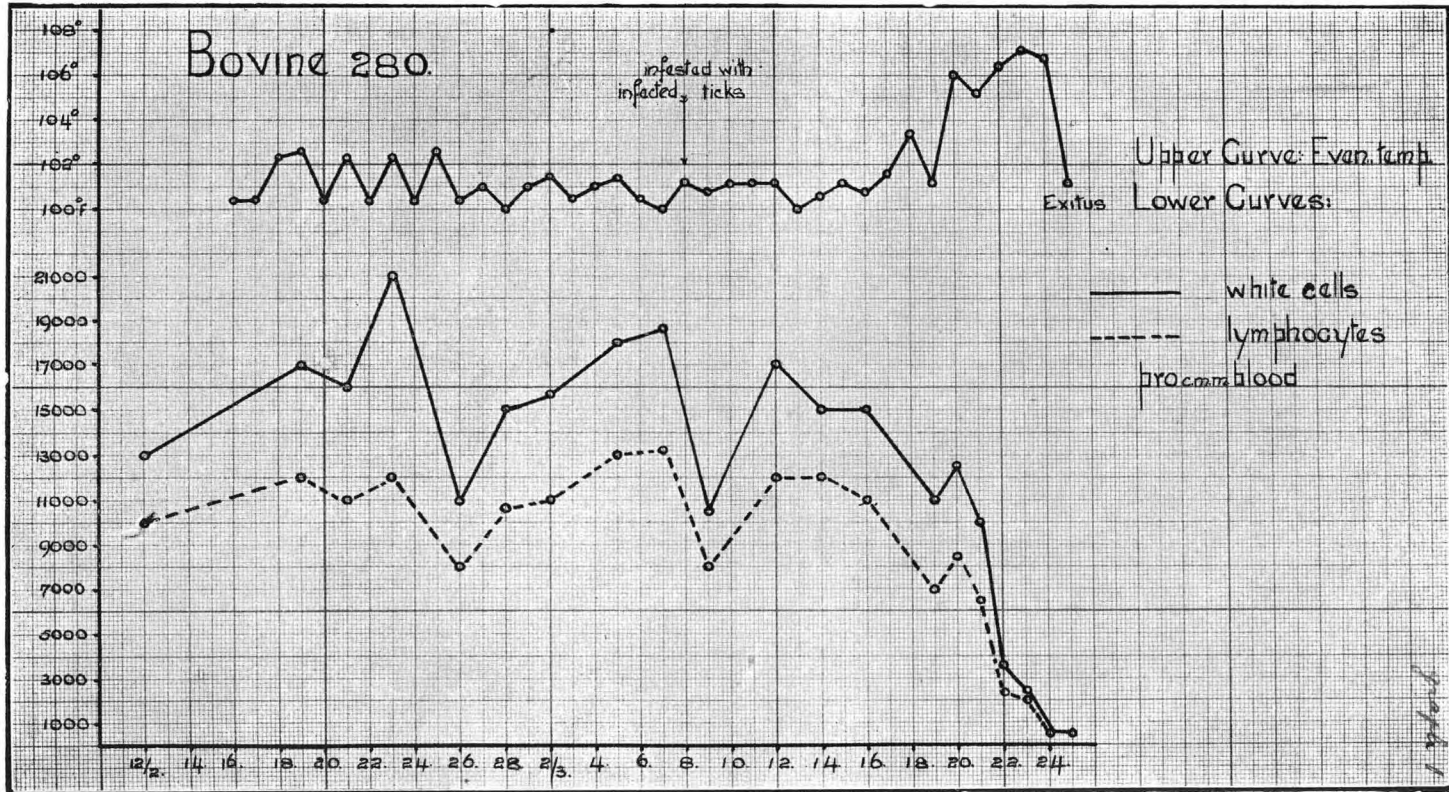


Fig. 12.—Liver. East Coast Fever. (Haemalum-Eosin) interstitial cell infiltration, magnification 80 \times .

East Coast Fever.]

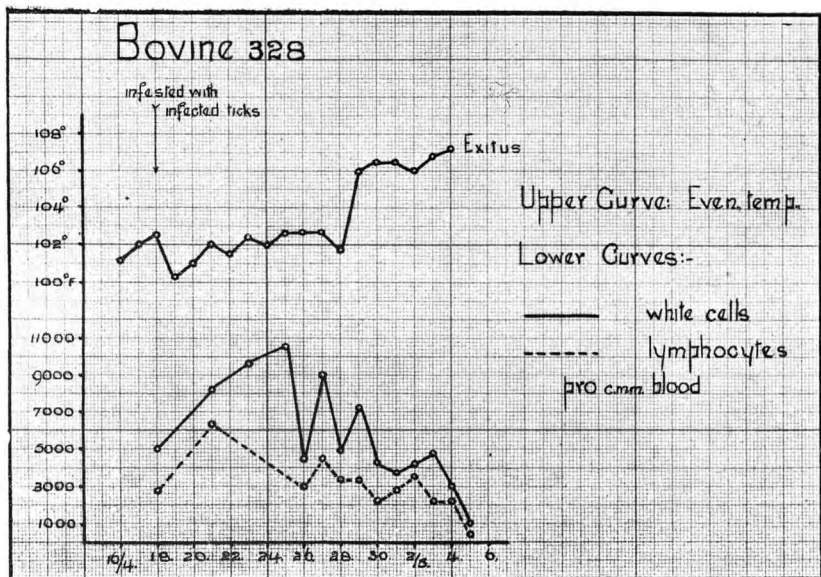
[*W. Steek.*



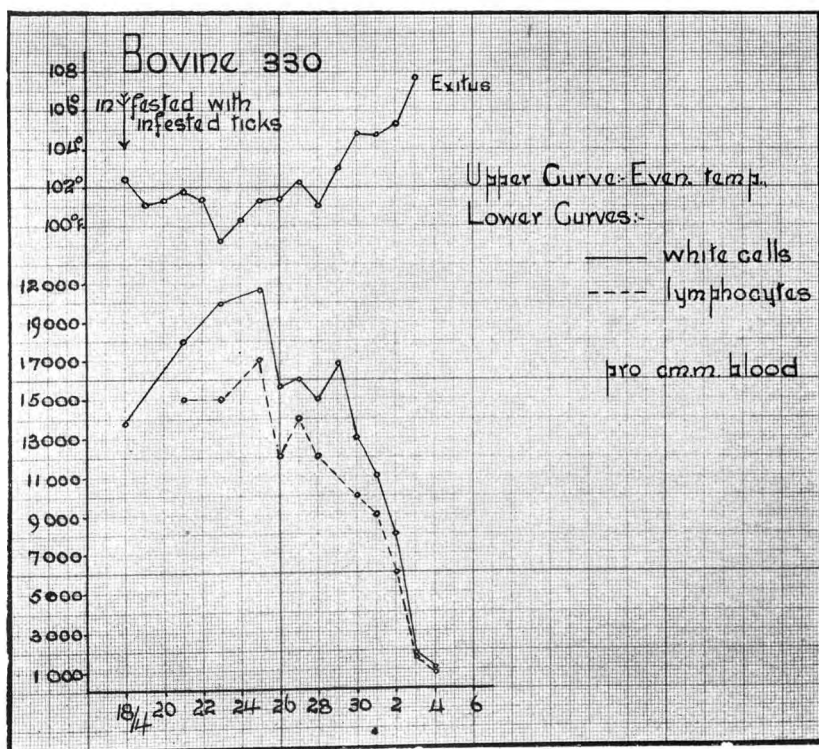
East Coast Fever.]

GRAPH. I.

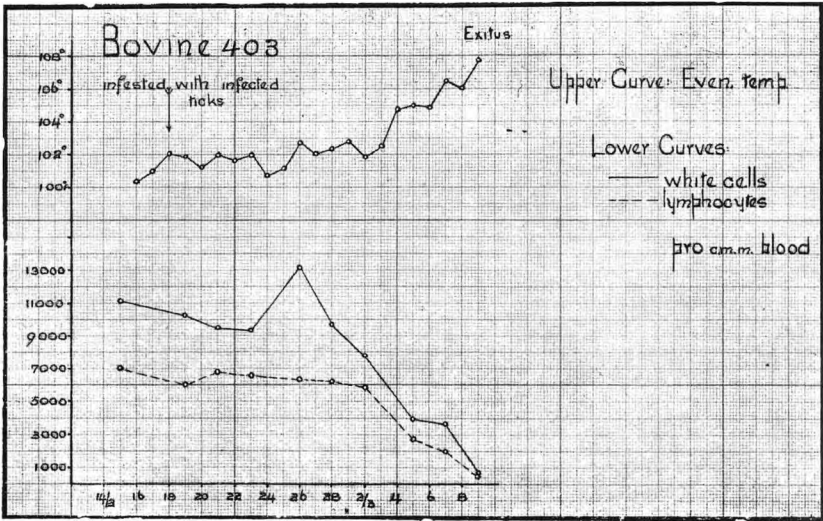
[W. Steck.



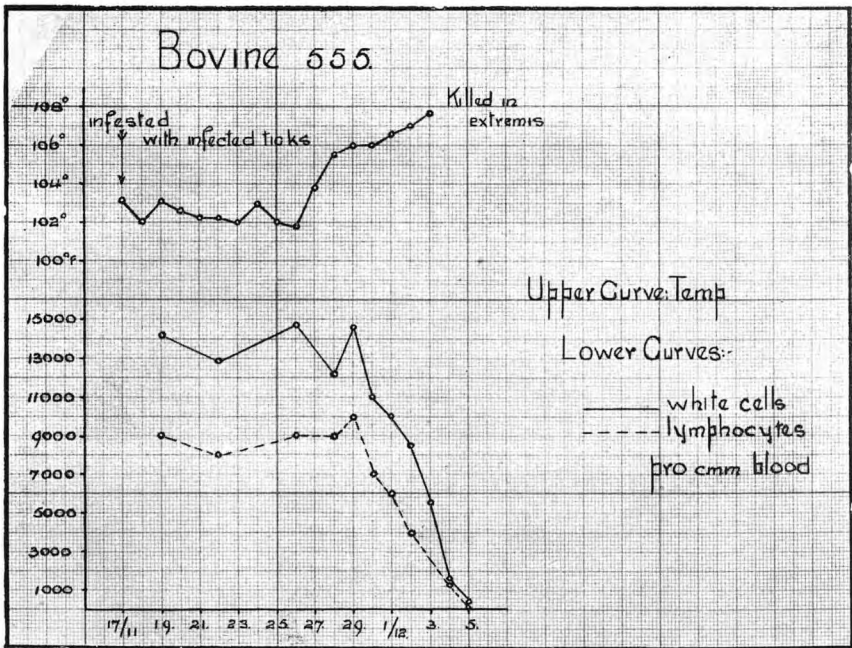
GRAPH 2.



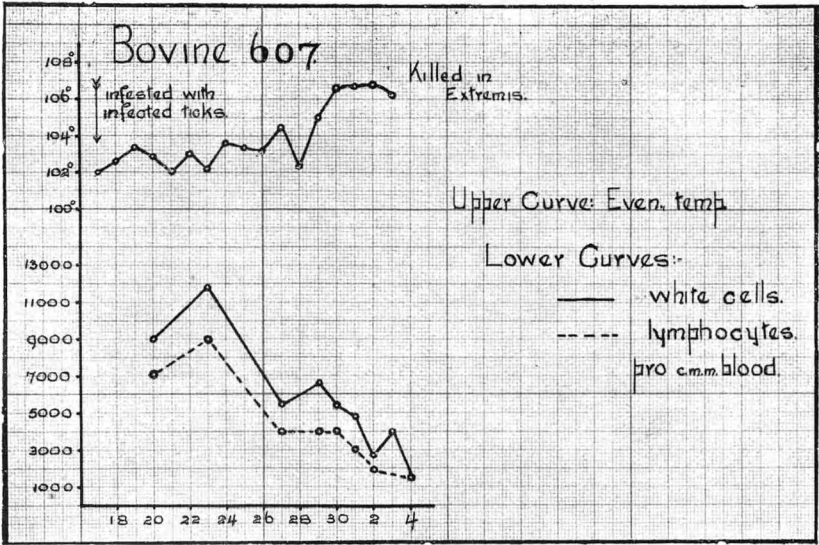
GRAPH 3.



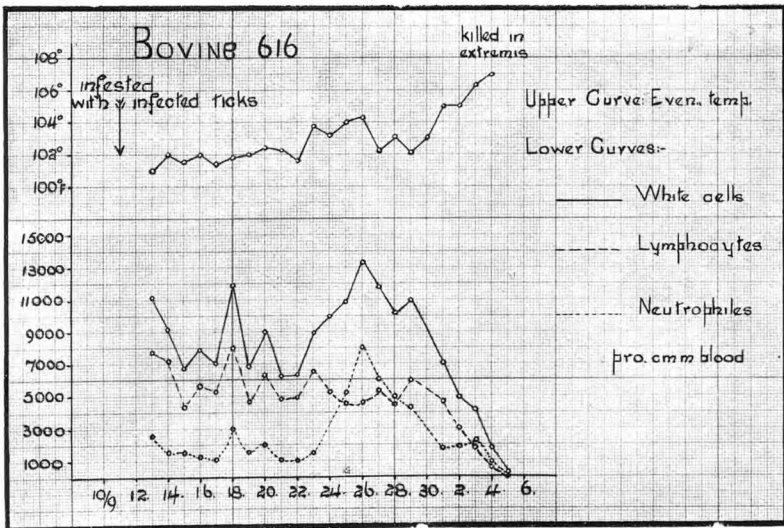
GRAPH 4.



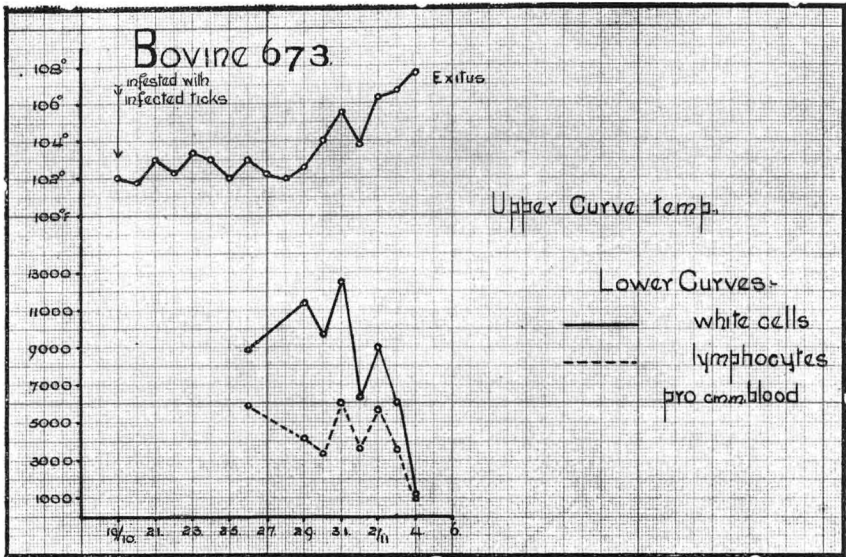
GRAPH 5.



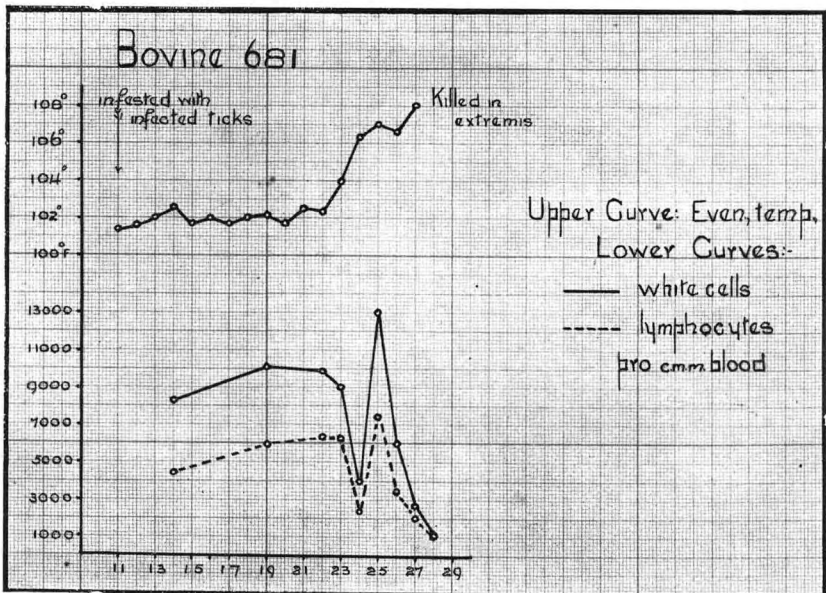
GRAPH 6.



GRAPH 7.



GRAPH 8.



GRAPH 9.