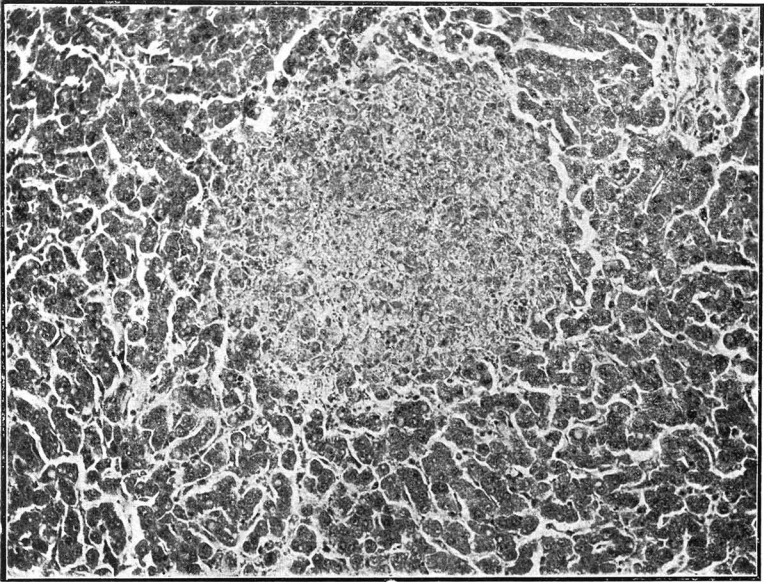
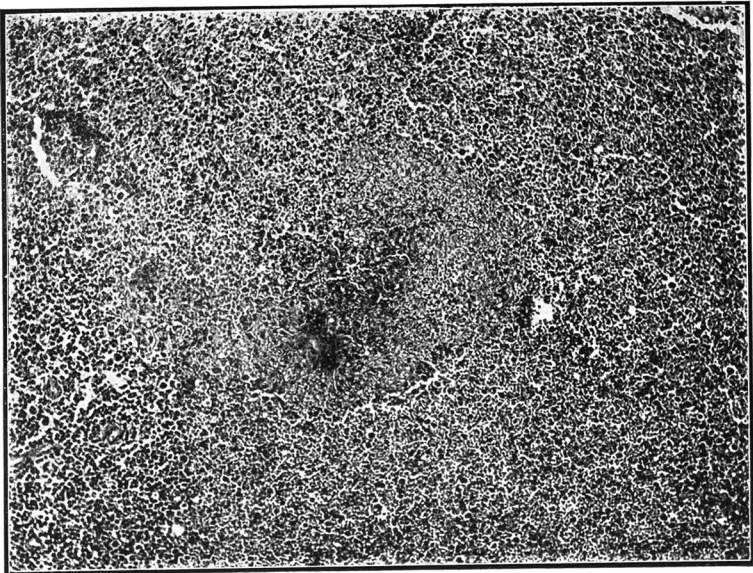


PLATE 1.



Specimen No. 6538.—Liver. Multiple necrosis of the liver due to *Bacillus enteritidis* infection.

PLATE 2.

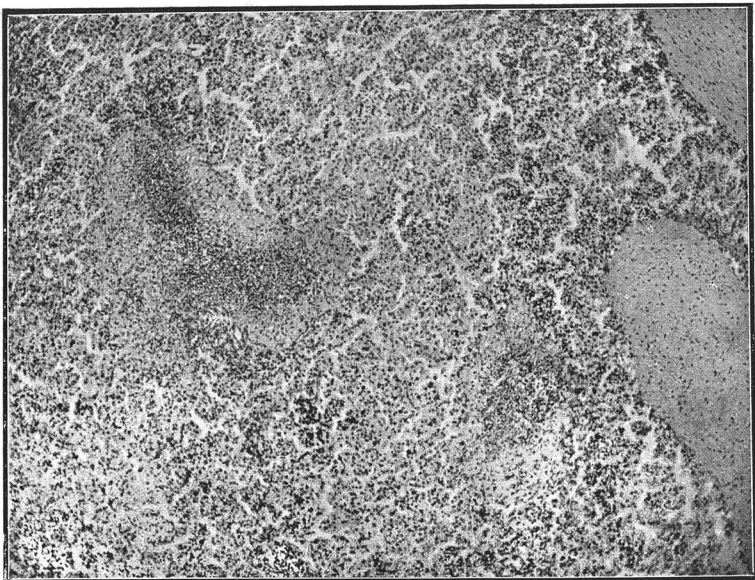


Specimen No. 4814.—Lymph Gland. A necrotic focus in the gland due to *Bacillus enteritidis* infection.

Calf Paratyphoid.]

[*Viljoen and Martinaglia.*

PLATE 3.

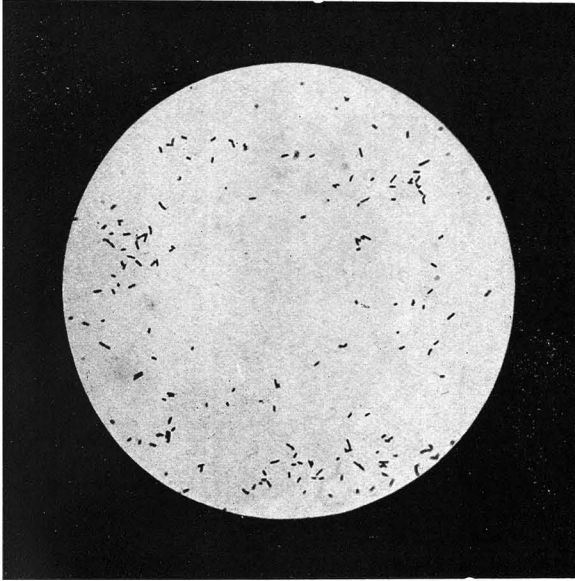


Specimen No. 3797.—Spleen. Necrotic foci with cellular infiltration similar to those seen in other organs in a case of *Bacillus enteritidis* infection in calves

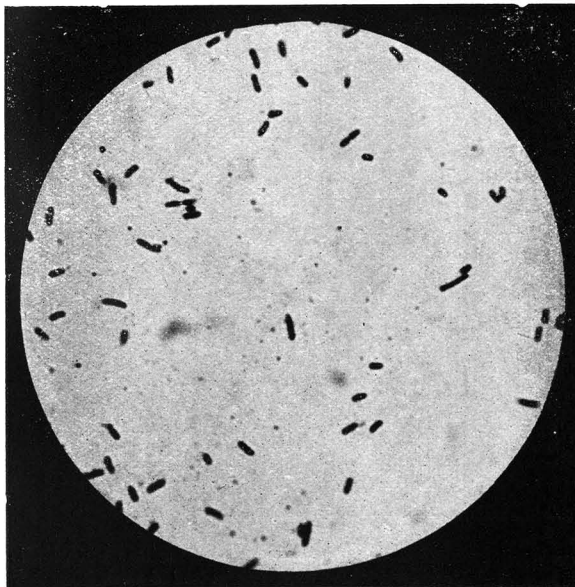
Calf Paratyphoid.]

[*Viljoen and Martinaglia.*

PLATE 4.

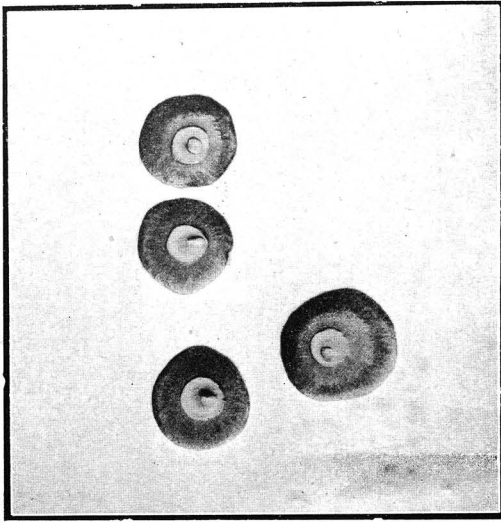


Bacillus enteritidis of calves. Pure culture. Magnified 500 \times .

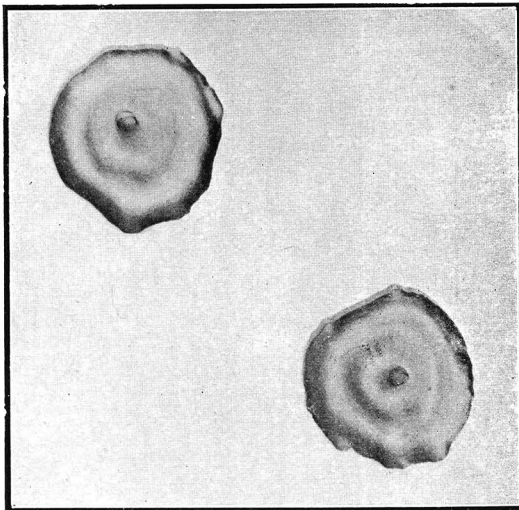


Bacillus enteritidis of calves. Pure culture. Magnified 1,250 \times .
Calf Paratyphoid. [Viljoen and Martinaglia.]

PLATE 5.



Four days old colonies of Calf Bacillus enteritidis on gelatine.
Magnified 4×.



More thinly seeded four days old Calf Bacillus enteritidis
colonies on gelatine. Magnified 4×.

Calf Paratyphoid.]

[*Viljoen and Martinaglia.*

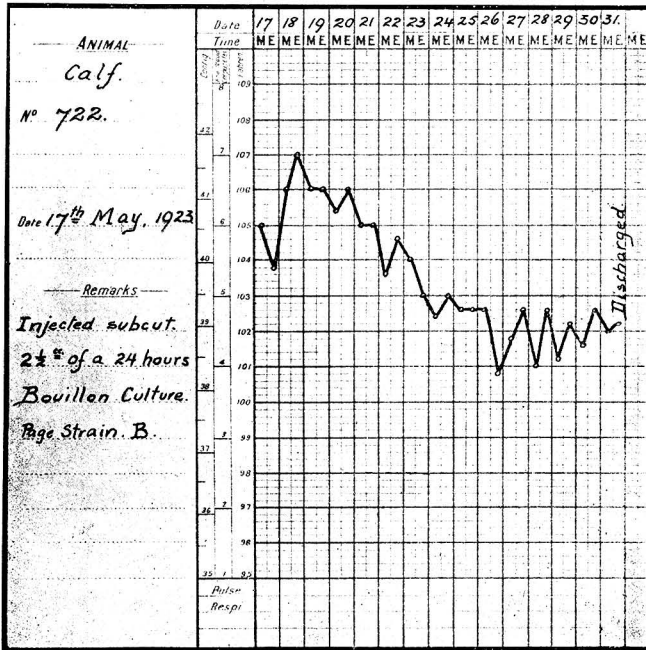


CHART No. 1.

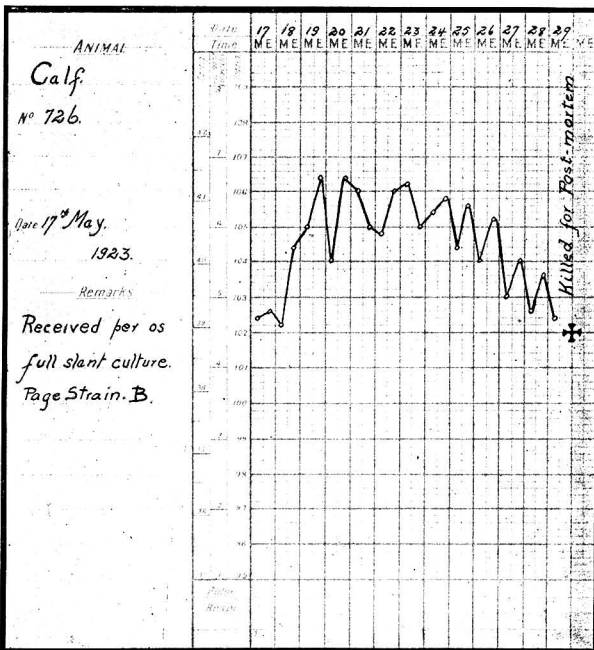


CHART No 2.

Calf Paratyphoid.]

[Viljoen and Martinaglia.

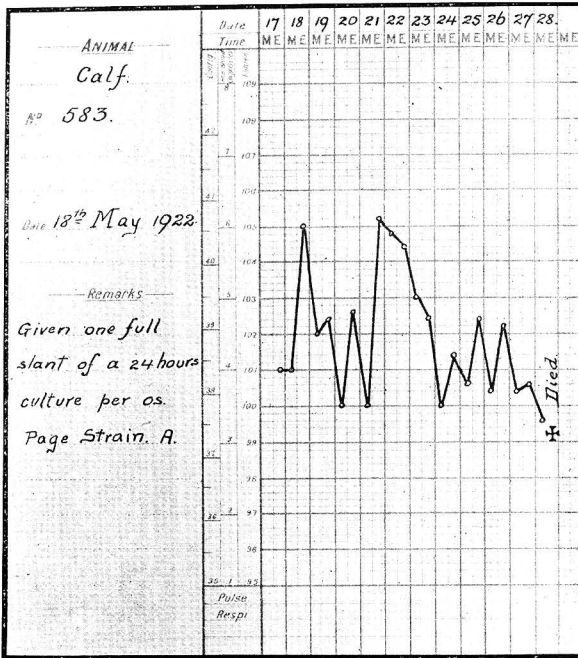


CHART No. 3.

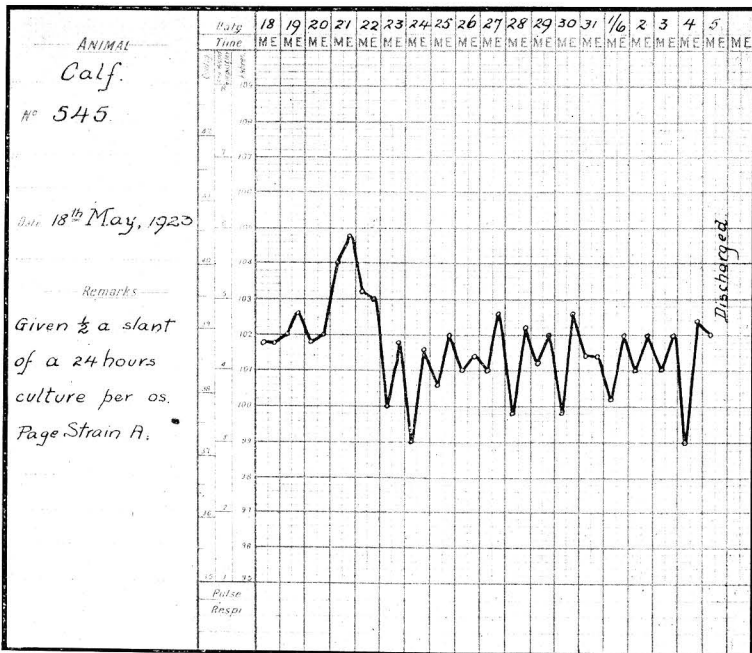


CHART No. 4.

Calf Paratyphoid.]

[Viljoen and Martinaglia.

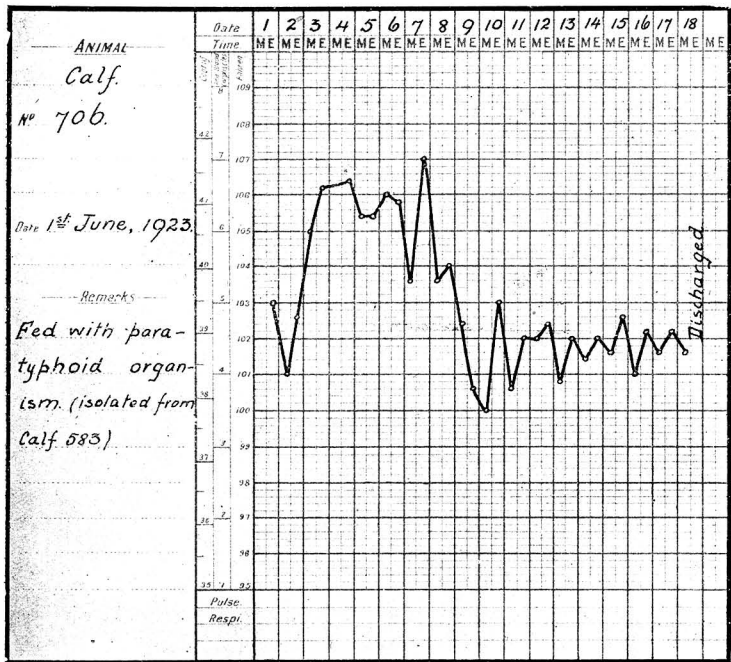


CHART No. 5.

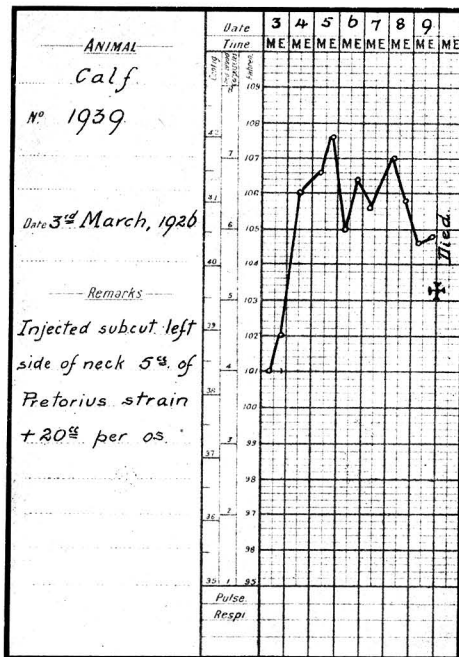


CHART No. 6.

Calf Paratyphoid.]

[Viljoen and Martinaglia,

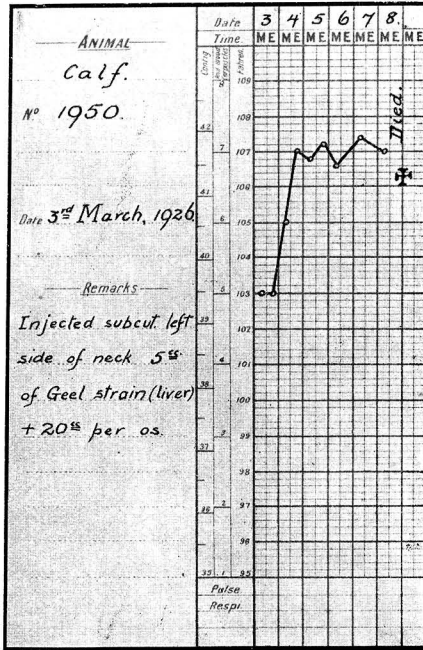


CHART No. 7.

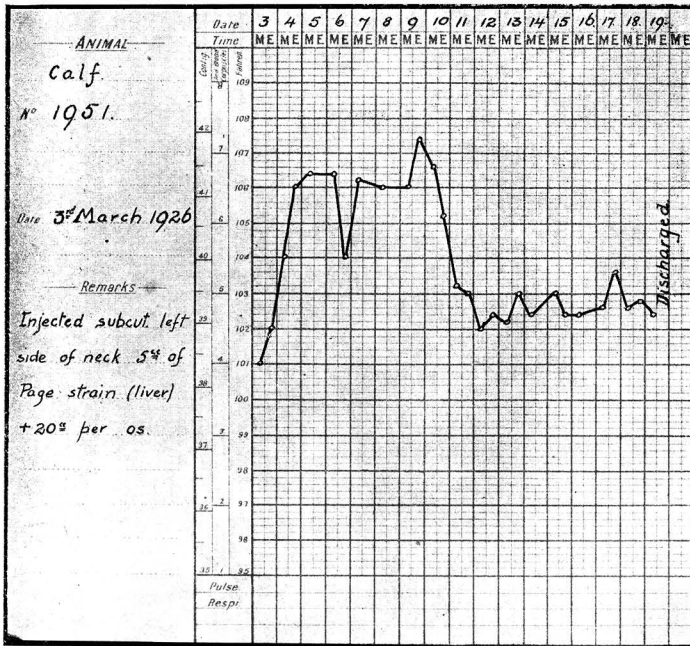


CHART No. 8.

Calf Paratyphoid.]

[Viljoen and Martinaglia.