

PLATE I.
(Microphotographs.)

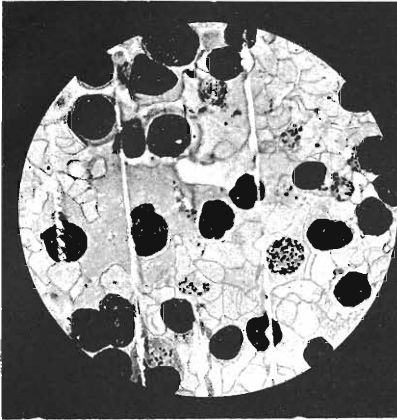


FIG. 1. --Plasma bodies (agamonts) from calves in Marico (*Th. mutans*).

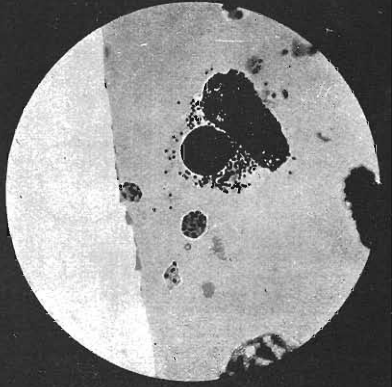


FIG. 2. Plasma bodies (gamonts and agamonts) from a case of East Coast fever (*Th. parva*).

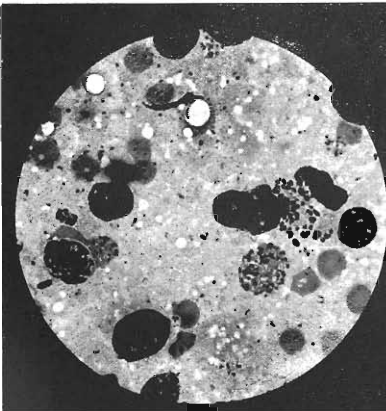


FIG. 3.—Plasma bodies (agamonts) from cattle in Muktesar, India (*Th. annulata*).

(*Gonderia* or *Theileria mutans*.)



FIG. 4.—Plasma bodies (agamonts) from spleen of calf in Kaalplaats, Pretoria District (*Th. mutans*).

{ *Theiler* and *Graf*.

PLATE II
(Reproduced from coloured drawings.)

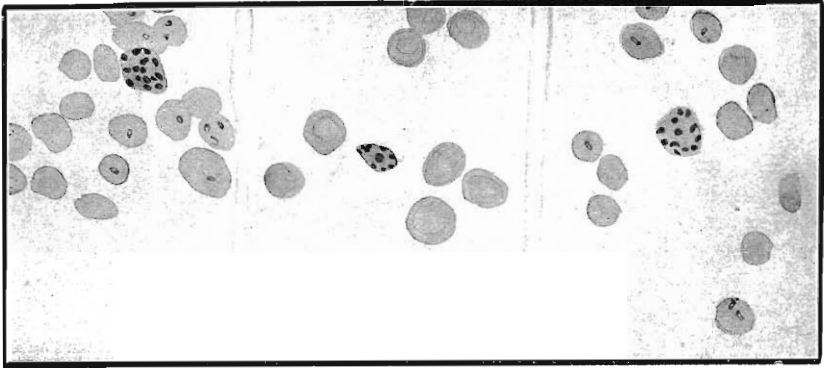


FIG. 5.—Plasma bodies (agamonts) in the blood of East Coast fever cattle (*Th. parva*).

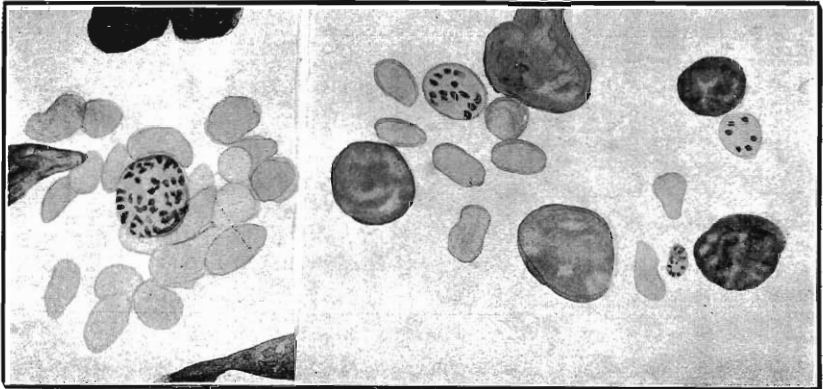


FIG. 6.—Plasma bodies (agamonts and gamonts) in the spleen of calf from Marico (*Th. mutans*).

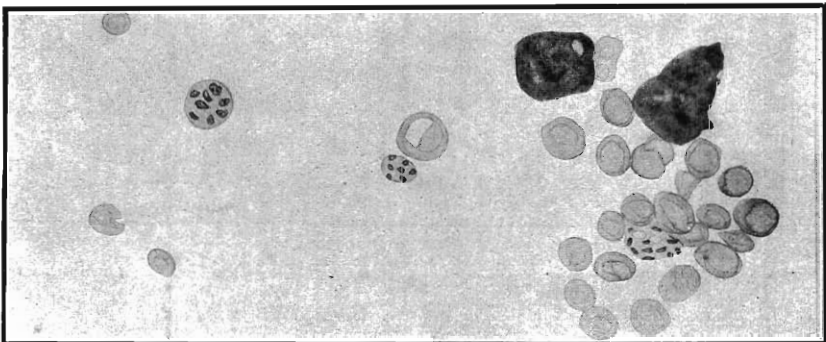
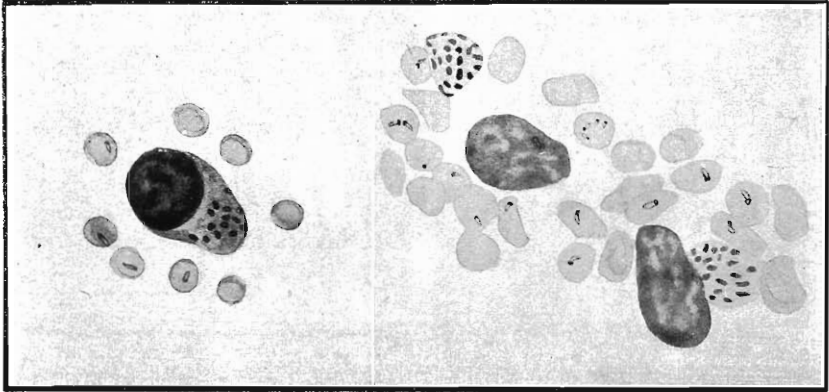


FIG. 7.—Plasma bodies (agamonts) in the spleen and glands of calf from Kaalplants, Pretoria District (*Th. mutans*)—Composite drawing.

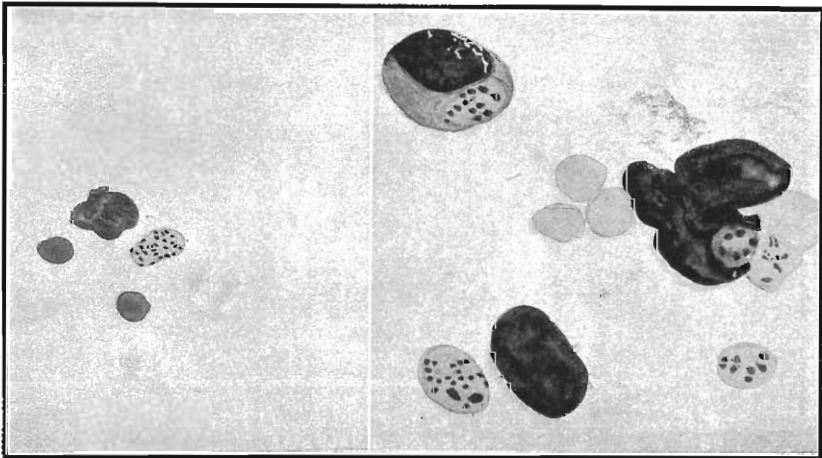
Gonderia or *Theileria mutans*.]

[*Theiler and Graf*

PLATE III.
(Reproduced from coloured drawings.)



FIGS. 8 and 9.—Plasma bodies (agamonts) in blood and glands from a case of East Coast fever (*Th. parva*.)

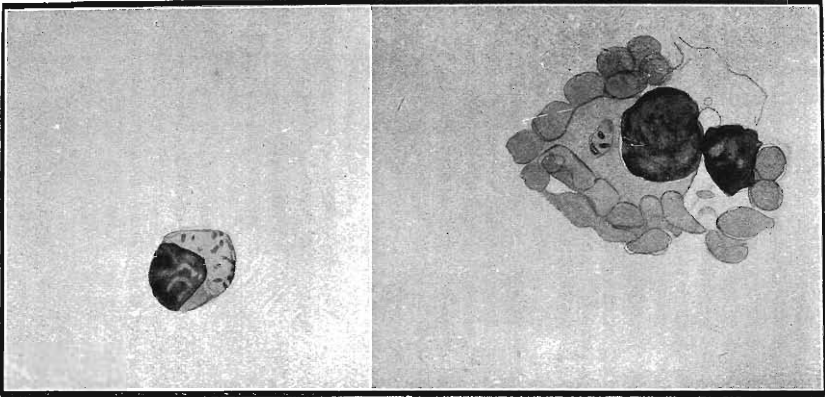


FIGS. 10 and 11.—Plasma bodies (agamonts and gamonts) from calves in Marico (*T. mutans*).

Gonderia or *Theileria mutans*.]

[*Theiler* and *Graf*.

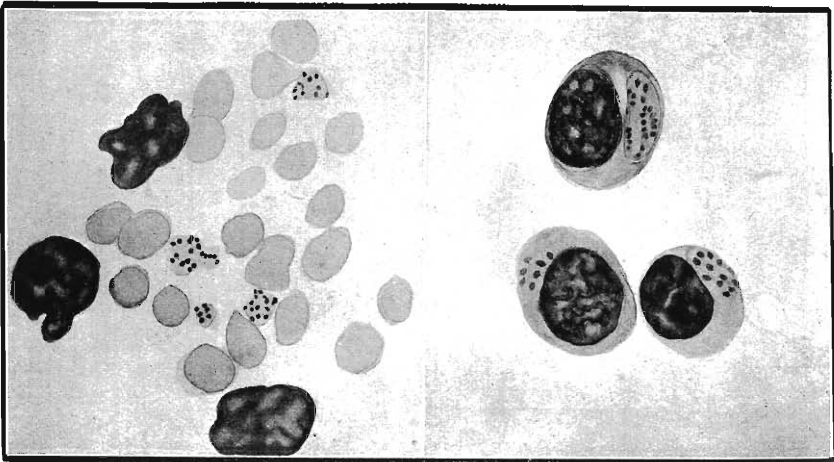
PLATE III (continued).



FIGS. 12 and 13.—Plasma bodies (agamonts and ? gamonts) from glands of calf in Kaalplaats, Pretoria District (*Th. mutans*).

PLATE IV.

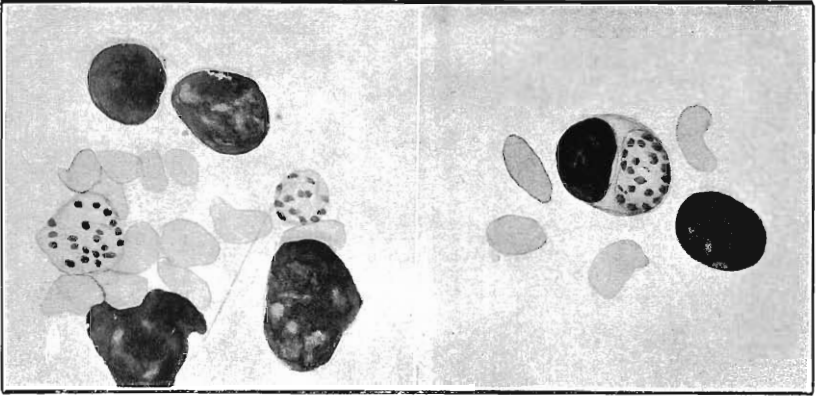
(Reproduced from coloured drawings.)



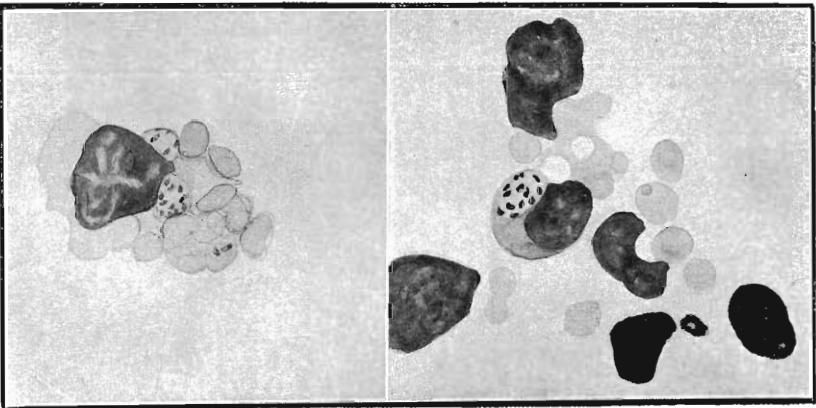
FIGS. 14 and 15.—Plasma bodies (agamonts and gamonts) in blood and glands from a case of East Coast fever (*Th. parva*).

Gonderia or *Theileria mutans*.]

[*Theiler and Graf*.



FIGS. 16 and 17.—Plasma bodies (agamonts) from calves in Marico District (*Th. mutans*).



FIGS. 18 and 19.—Plasma bodies (agamonts and gamonts) in glands of calf on Kaalplaats, Pretoria District (*Th. mutans*).

Gonderia or *Theileria mutans*.]

[*Theiler and Graf*.