

PLATE I.

Specimen No. 4826. Natural size. Multiple Necrotic foci. Muscles.

*Pseudo-tuberculosis.*

[*Dr. Koch and Fovrie.*

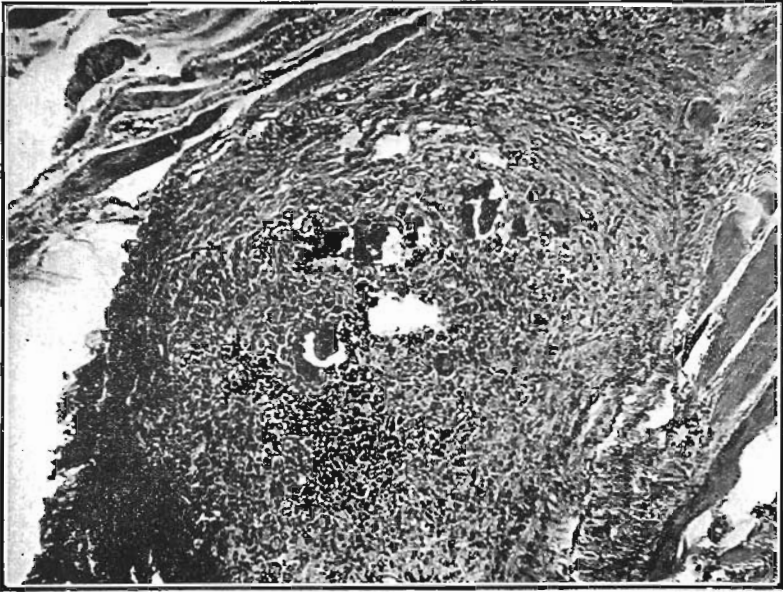


Fig. 1.—Young nodule—numerous epithelioid cells and slight calcification.

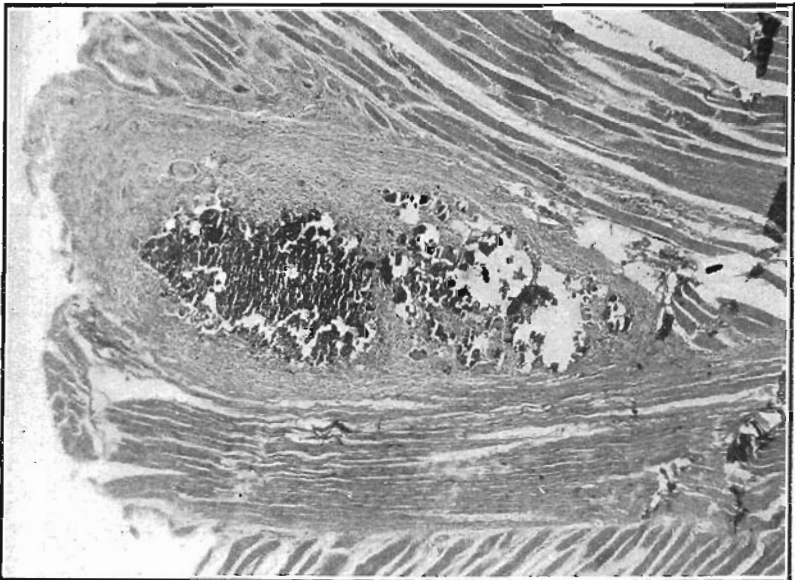
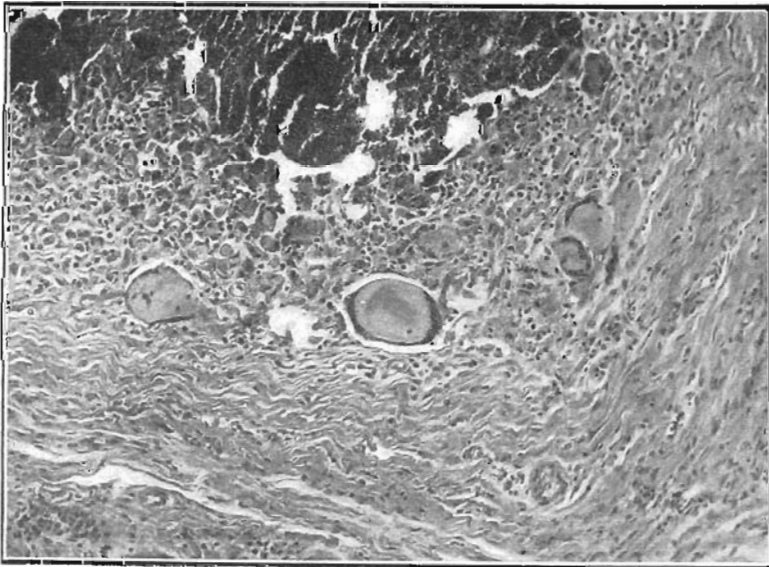
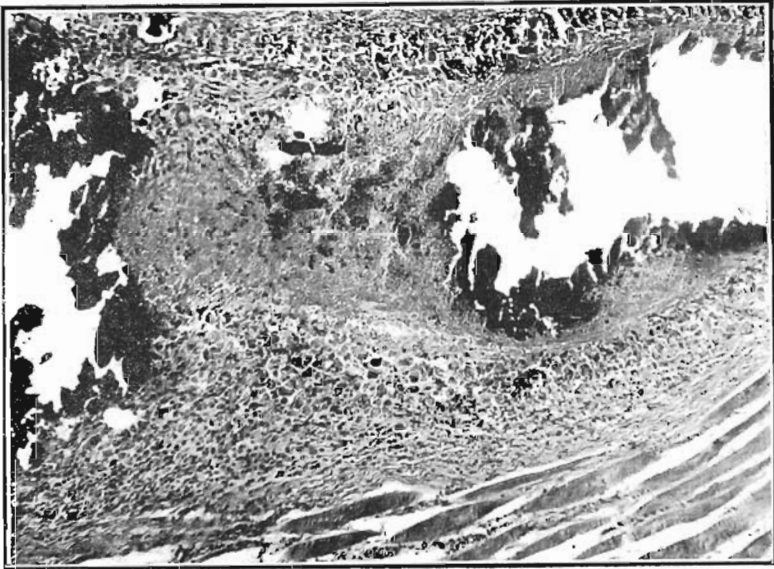


Fig. 2.—Older nodule with necrosis and calcification.

*Pseudo-tuberculosis.*]

[*De Kock & Fourie.*

PLATE II (continued).



Figs. 3 and 4.—Old nodule with calcification and epithelioid and Langhans giant cells at periphery.

*Pseudo-tuberculosis.*]

[*De Kock & Fourie.*

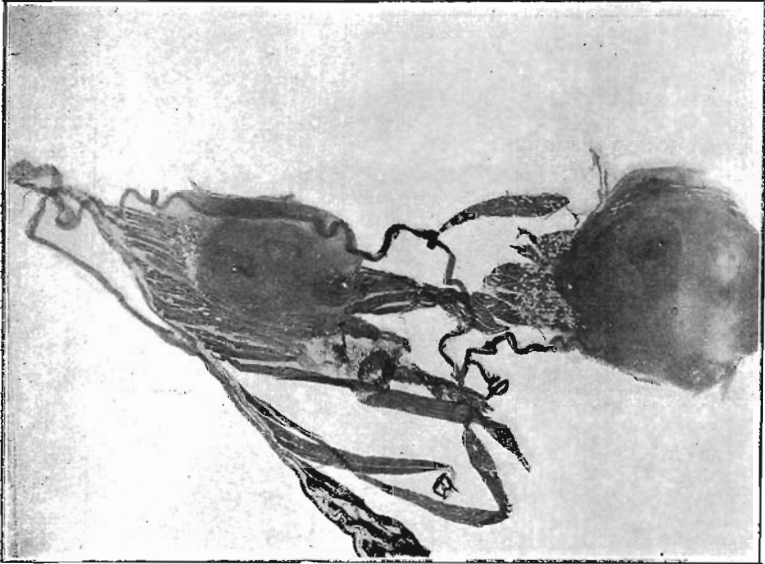


Fig. 1.—Nodule Pseudo-tuberculosis.



Fig. 2.—As above, higher magnification showing necrosis and giant cells at periphery.

*Pseudo-tuberculosis*].

[*De Kock & Fourie.*

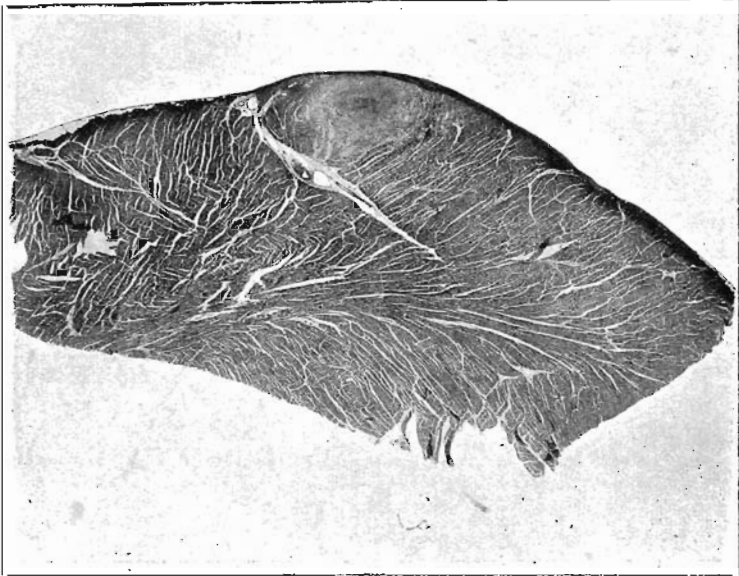


Fig. 1.—Nodule Pseudo-tuberculosis.

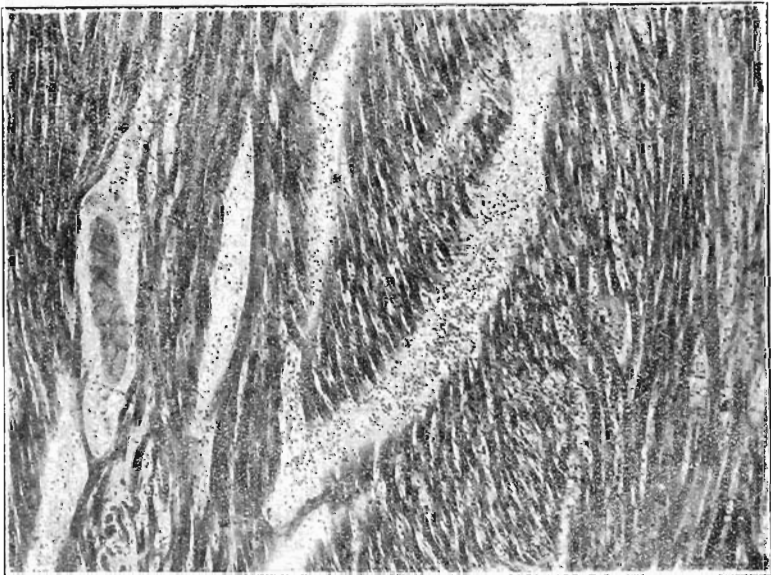


Fig. 2.—Interstitial and Parenchymatous Myocarditis.

*Pseudo-tuberculosis.*]

[*De Kock & Fourie.*