



Online Journal Subscriptions

Heila Pienaar & Robert Moropa
Academic Information Service
University of Pretoria





Content

- Current state of SA licensing
- SASLI's status
- Current state of SA institutional repositories
- Where are we going?
- How will the eResearch support service help?



Current state of SA online licensing

- In the past vendors & publishers approached university libraries individually
- The SA Site Licensing Initiative's (SASLI's) role is to centrally negotiate licenses and prices with publishers on behalf of tertiary institutions
- Achievements:
 - 2002/3: 6 site licenses for SA cost-saving R29.6M
 - 2003/4: 9 site licenses for SA cost-saving R32.6M
 - 2004/5: 44 site licenses for SA cost-saving R350M
 - 2005/6: SA cost-saving R489M



SASLI'S status

- The Coalition of SA Library Consortia (COSALC) established SASLI in May 2002
- Current status: Section 21, NPO company since Dec 2004
- Proposed status: Investigate possibility to be accommodated in a national organisation eg the NRF or National Library of SA ...
- Current spending on online journal subscriptions by SA higher education: R80M

eResearch Support Service for SA

eResearch Board

Governance & Management

eResearch Development & Innovation

Function

eResearch Service Delivery

- Future eResearch activities**
- Research Portal (incl global searching)
 - Data Transfer and Sharing (processes and protocols, 3As, helpdesk)
 - Open Access (Standards, common software, institutional repositories)
 - The eResearch Librarian (Training and re-orientation)
 - Digital Curation Services (Standards, software, marketing & training services)
 - Portable & access constraints

Activities

Innovative services move to Service Delivery

- Immediately**
- SASLI+
 - National Research and Education Network
 - Centre for High Performance Computing

Usually sub-contracted to competent agents in the system

Lead Users Forum



Current state of SA institutional repositories:

- A number of initiatives are underway
- Rhodes & UP research institutional repositories are archiving SA journal articles
- UCT Computer Science department houses a research document repository
- Several institutional theses and dissertation repositories (UJ, RU, UFS, UP, Unisa, Wits, UWC)
- Sivulile (“we have opened”) is an OA initiative that are funded by OSI, eIFL.net & Unesco. Several workshops on open access & institutional repositories have been held since 2004 for the tertiary sector (S. Veldsman, Dr D Peters, Dr H. Sulleman, J. de Beer)



Where are we going:

- Currently every university library must manage and organise their own online journal collection eg [Ebsco A-Z](#)
- No “Team SA” or government clout in negotiations
- SA often not seen as a developing country in terms of special deals eg [Hinari](#)
- No central SA OA repository or expertise or co-ordination on repositories available



How will eResearch support service help?

- SASLI part & parcel of eResearch support service
- Research portal as a one-stop-service for all commercial and open access journals (resource management)
- National funding and clout for core resources eg core journals available to the country as a whole
- Special licensing arrangements for specific sectors
- Pay-as-you-use option
- Central open access repository &/ expertise & co-ordination for SA
- Global search engine
- Relationship between SA eResearch support and a virtual research environment (VRE)?

eResearch Support Service for SA

eResearch Board

Governance & Management

eResearch Development & Innovation

Function

eResearch Service Delivery

- Future eResearch activities**
- **Research Portal (incl global searching)**
 - Data Transfer and Sharing (processes and protocols, 3As, helpdesk)
 - **Open Access (Standards, common software, institutional repositories)**
 - The eResearch Librarian (Training and re-orientation)
 - Digital Curation Services (Standards, software, marketing & training services)
 - Portable & access constraints

Activities

Innovative services move to Service Delivery

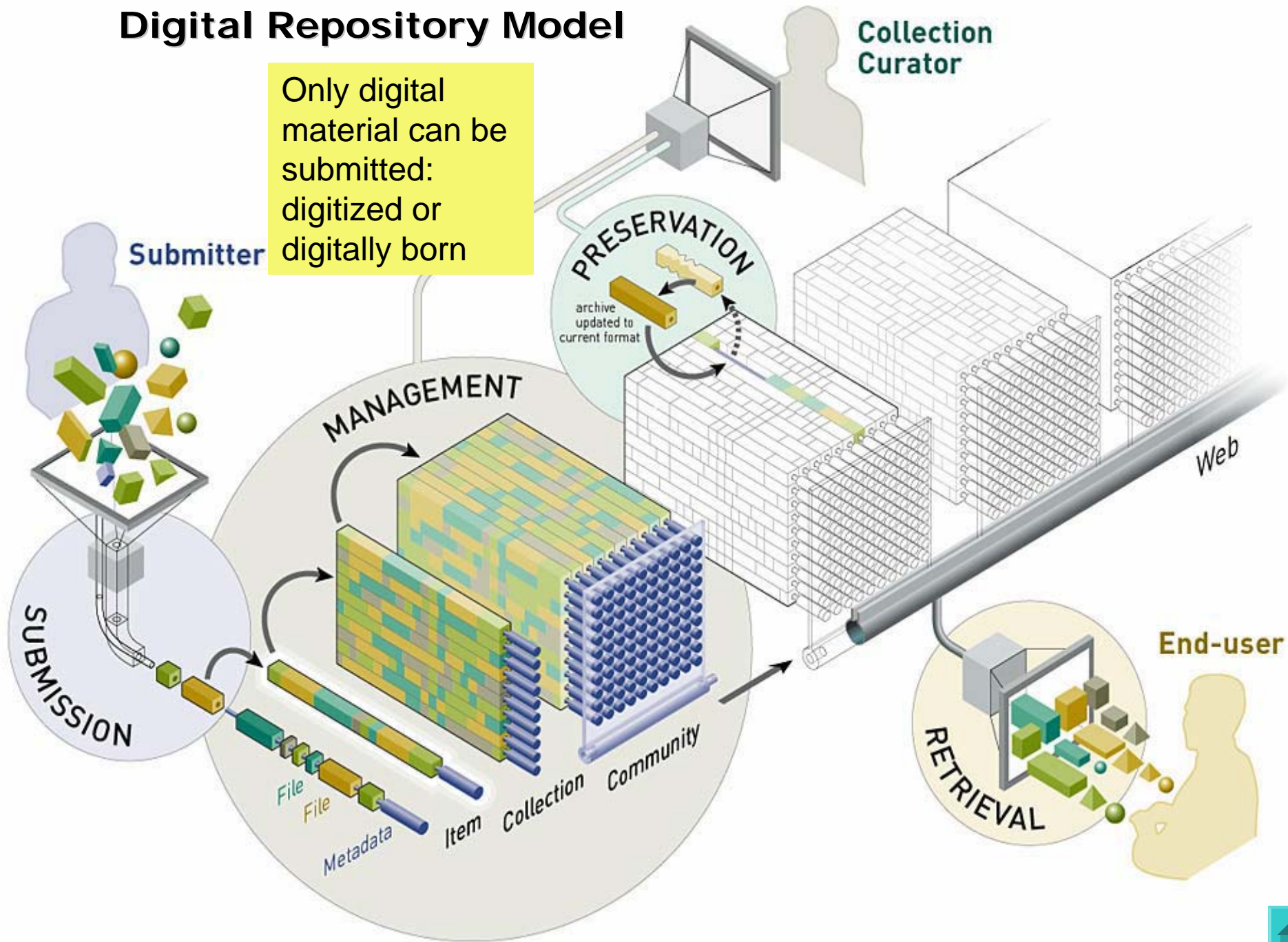
- Immediately**
- **SASLI+**
 - National Research and Education Network
 - Centre for High Performance Computing

Usually sub-contracted to competent agents in the system

Lead Users Forum

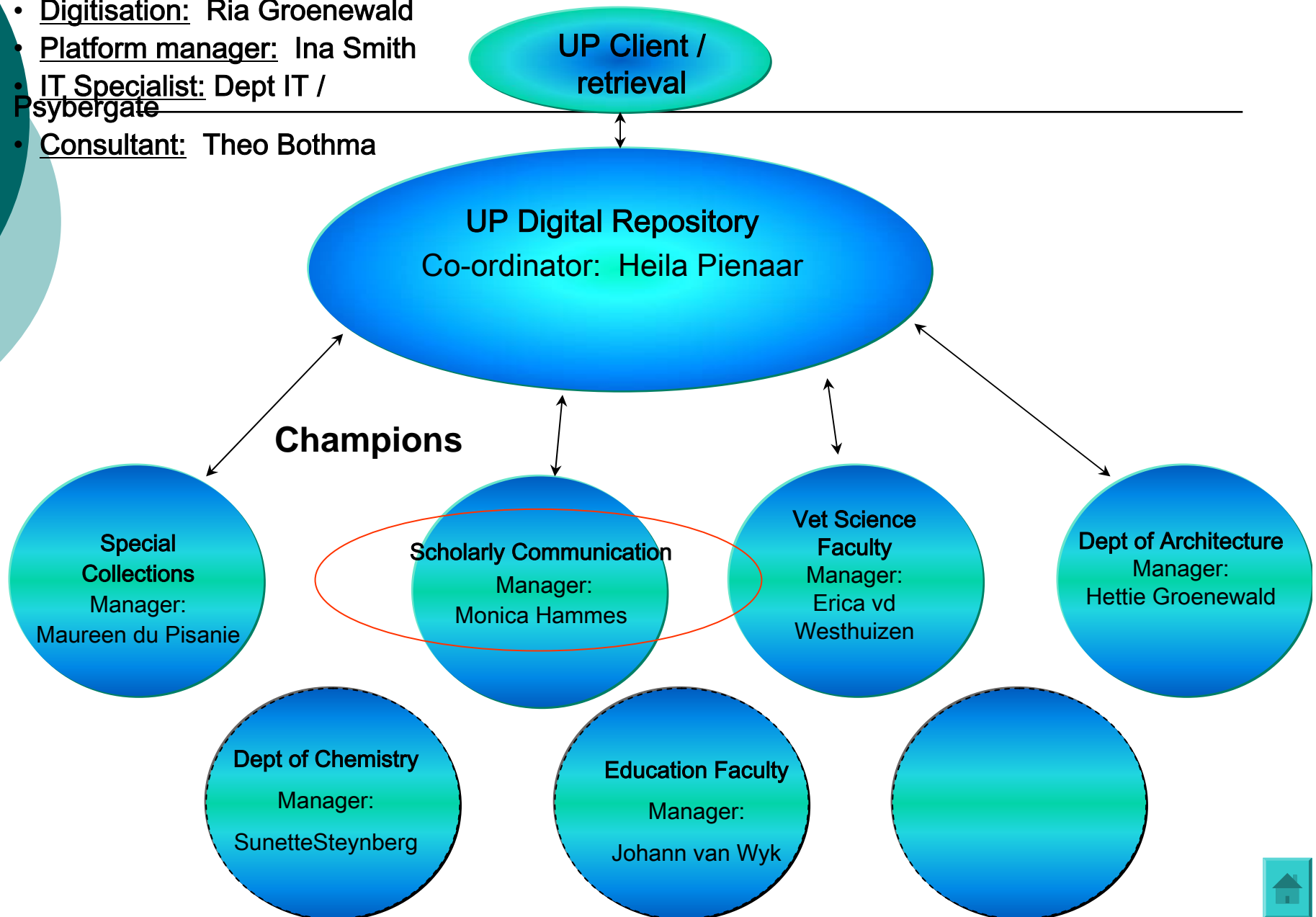
Digital Repository Model

Only digital material can be submitted: digitized or digitally born



Specialist / expert roles:

- **Metadata:** Amelia Breytenbach
- **Digitisation:** Ria Groenewald
- **Platform manager:** Ina Smith
- **IT Specialist:** Dept IT / Psybergate
- **Consultant:** Theo Bothma





University of Pretoria



Search UPSpace

[Advanced Search](#)

[Home](#)

Browse

[Communities & Collections](#)

[Titles](#)

[Authors](#)

[By Date](#)

Sign on to:

[UPSpace at the University of Pretoria](#) >
[UPePrints](#) >

Published Articles

Collection home page

In:

Search for

or browse

Subscribe to this collection to receive daily e-mail notification of new additions

Recent Submissions

[Virtual teamwork in very large undergraduate classes](#)

[Heat integration of multipurpose batch plants using a continuous-time framework](#)

[Energy optimization for subsoilers in tandem in a sandy clay loam soil](#)

[Africa as a knowledge](#)



Welcome to Rhodes eResearch Repository

The ReRR is an open access institutional repository of the academic and research output from the [Rhodes University](#) community. Current contents include full-text theses, journal articles and papers from conferences, workshops and other events. The repository is administered by [Rhodes University Library](#).

Authors have the option either to self-submit their papers (see [Guidelines for Authors](#) below) or they can contact the archive administrator at eprints@ru.ac.za for the mediated submission service offered by the Library. Please note that only current RU staff, students and affiliates may submit their material to the ReRR.

Search records:



UCT CS Research Document Archive

[Home](#) || [About](#) || [Browse](#) || [Search](#) || [Register](#) || [User Area](#) || [Help](#)

Welcome to UCT CS Research Document Archive



Welcome to the [UCT Computer Science](#) Research Document Archive, which archives and makes accessible documents that are products and by-products of research in the department.

Search the Titles, Authors, Abstracts and Keywords :

Search

[Browse](#)



Adaptive Bayesian agents: Enabling distributed social networks

April, Kurt, Anet Potgieter, Richard Cooke and M Lockett (2006) Adaptive Bayesian agents: Enabling distributed social networks. *South African Journal of Business Management* 37(1):41-55.

Full text available as:

[PDF](#) - Requires [Adobe Acrobat Reader](#) or other PDF viewer.

Abstract

This article brings together two views of organisations: resource-based theories (RBT) and social network analysis (SNA). Resource-based theories stress the importance of tangible assets, as well as less tangible ones, in the competitive advantage and success of organisations. However, they provide little insight into how resources are brought together by an organisation to generate core competencies that provide a source of differentiation that cannot easily be reproduced or substituted. In contrast



Title page for ETD etd-10202004-121726

Type of Document	Thesis
Author	Abdull, Mohammed Hoosein
URN	etd-10202004-121726
Title	Eco-theology : Christian and Muslim perspectives.



University of Pretoria

tyds@tuks

Alphabetical Lists

- Titles**
- Subjects
- Search
- About This Site

1. "AAA, Arbeiten aus Anglistik un" to "Aastrom Biosciences, Inc. SWOT" ▾

Find:

Search

[Advanced search](#)

0-9 ▶ [A](#) [B](#) [C](#) [D](#) [E](#) [F](#) [G](#) [H](#) [I](#) [J](#) [K](#) [L](#) [M](#) [N](#) [O](#) [P](#) [Q](#) [R](#) [S](#) [T](#) [U](#) [V](#) [W](#) [X](#) [Y](#) [Z](#)

[A](#) ▶ [AA](#) [AB](#) [AC](#) [AD](#) [AE](#) [AF](#) [AG](#) [AH](#) [AI](#) [AJ](#) [AK](#) [AL](#) [AM](#) [AN](#) [AO](#) [AP](#) [AQ](#) [AR](#) [AS](#) [AT](#) [AU](#) [AV](#) [AW](#) [AX](#) [AY](#) [AZ](#)

page: ▶ 1

Titles where title name begins with 'AA': 11

AAA, Arbeiten aus Anglistik und Amerikanistik

[Periodicals Archive Online \(UK Server\)](#) 1976 - 1995

ISSN: 0171-5410

Subject: Language and literature -- English

Other Links: [E-Journals Homepage \(TYDS@TUKS\)](#)

[Library Catalogue \(UPexPlore\)](#)

[Information Specialists](#)

[Interlending Services](#)

[AAACE international transactions](#)





University of Pretoria

Academic Information Service

UP Home

Search the UP Web

Afrikaanse weergawe

Home

About Us

Services/Facilities

E-Resources

Journals

Catalogue

Training

Contact



- Services per Faculty
- Lecturer Support
- Research Support
- Copyright & Plagiarism
- Referencing Techniques
- Ask a Librarian (General Inquiries)

Home >> GoogleScholar™

About GoogleScholar™ @ the AIS

Through GoogleScholar™ you can now not only access scholarly articles published on the World Wide Web, but also access valuable information resources to which the library of the University of Pretoria subscribes - all from a **single searchable point**. This is an innovative experiment and option currently investigated by the **Academic Information Service** (library of the University of Pretoria).

GoogleScholar™ provides a simple way to broadly search for scholarly literature. From one place, you can search across many disciplines and sources, e.g. the University of Pretoria library catalogue, databases, electronic full text journals, theses, articles, web pages worldwide, etc.

Accessing GoogleScholar™



About GoogleScholar™

How do I ...?

Get access to:

My Library Space

- View & Renew Material
- Interlending
- UP Portal
- Students Online
- Lecturers Online

AIS Intranet (AIS Staff Only)





tacit knowledge management

Search

[Advanced Scholar Search](#)
[Scholar Preferences](#)
[Scholar Help](#)

Scholar

Results 1 - 10 of about 43,500 for [tacit knowledge management](#). (0.16 seconds)

[All articles](#) [Recent articles](#)

[CITATION] A model of **knowledge management** and the N-form corporation -

[SFX@University of Pretori](#)

G HEDLUNG - *Strategic management journal*, 1994 - Wiley

[Cited by 423](#) - [Web Search](#) - [BL Direct](#)

[BOOK] [Information technology for knowledge management](#) - [group of 6](#) »

UM Borghoff... - 1998 - [jucs.org](#)

... is that IT-driven **knowledge management** strategies may ... up objectifying and calcifying **knowledge** into static ... disregarding altogether the role of **tacit knowledge**. ...

[Cited by 188](#) - [Web Search](#) - [Library Search](#)

[CITATION] Case-based reasoning approach to cognitive map-driven **tacit knowledge management**

JB Noh, KC Lee, JK Kim, JK Lee, SH Kim - *EXPERT SYS APPL*, 2000

... Experiment results showed that our methodology for **tacit knowledge management** can provide decision makers with robust **knowledge**-based support. ...

[Cited by 46](#) - [Web Search](#) - [BL Direct](#)

[BOOK] [Information Ecology: Mastering the Information and Knowledge Environment](#)

TH Davenport, L Prusak - 1997 - Oxford University Press



SA Research Support & Virtual Research Environment (VRE)

SA Research Support
(generic support)

Virtual Research Environment (VRE)
(specific support)





SA Research Support & Virtual Research Environment (VRE)

SA Research Support
(SA OA repository)

Virtual Research Environment (VRE)
(Research repository for research data,
documents, conversations etc - secure)





LOGIN

HINARI

About HINARI

Full-text journals, databases and other resources

Eligibility

Register

Partners

Publishers' statement

Frequently asked questions

Training

Using HINARI

Health InterNetwork Access to Research Initiative

The HINARI program, set up by WHO together with major publishers, enables developing countries to gain access to one of the world's largest collections of biomedical and health literature. Over 3280 journal titles are now available to health institutions in 113 countries, benefiting many thousands of health workers and researchers, and in turn, contributing to improved world health.

HINARI/AGORA USER SURVEYS

HINARI/AGORA User Surveys

In a continuing effort to improve this programme by enhancing access, dissemination, and the usage of research information and knowledge available on the HINARI website, we ask you to complete this short survey. Please note that the survey takes only 5-10 minutes to complete.

FEEDBACK FROM USERS

Dear HINARI,

HINARI is very essential for this institution to meet up with the demands of her academic staff with the dwindling of funds for journal subscription. We believe so because we have seen HINARI transform institutions like ours. Nigeria, April 2006

[Siteo HINARI em Português](#)



Visit our sister programme Access to Global Online Research in Agriculture

HINARI
Keep up to date!
Access the world's leading biomedical journals in your library
Information for Life