

Fig. 1.—Early Stage of Lamsiekte, showing stiffness of front legs.



Fig. 2.—Paralytic Stage of Lamsiekte, showing animal attempting to rise.  
*Lamsiekte.* [Theiler and Others.]

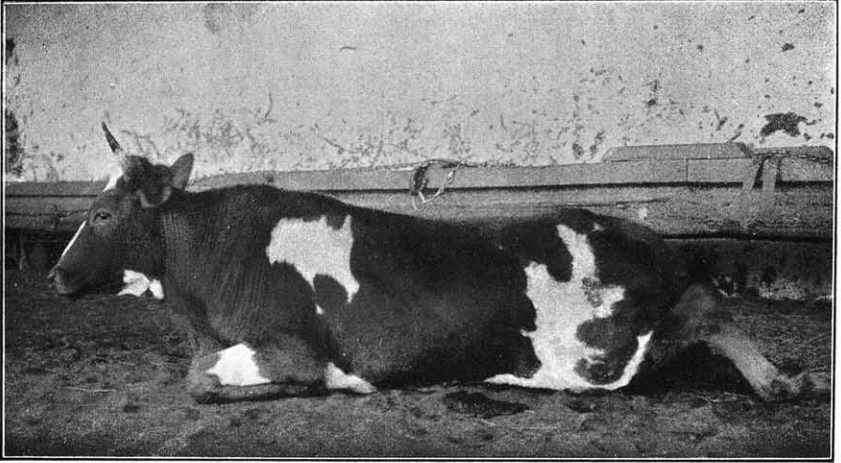


Fig. 3.—Paralytic Stage of Lamsiekte, showing animal failing in attempt to rise.

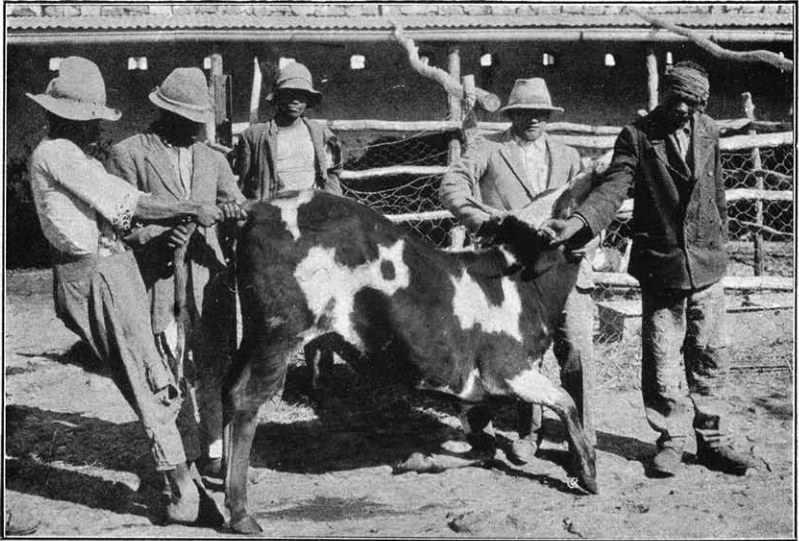


Fig. 4.—Complete Paralysis: animal unable to stand on its legs.  
*Lamsiekte.* [Theiler and Others,

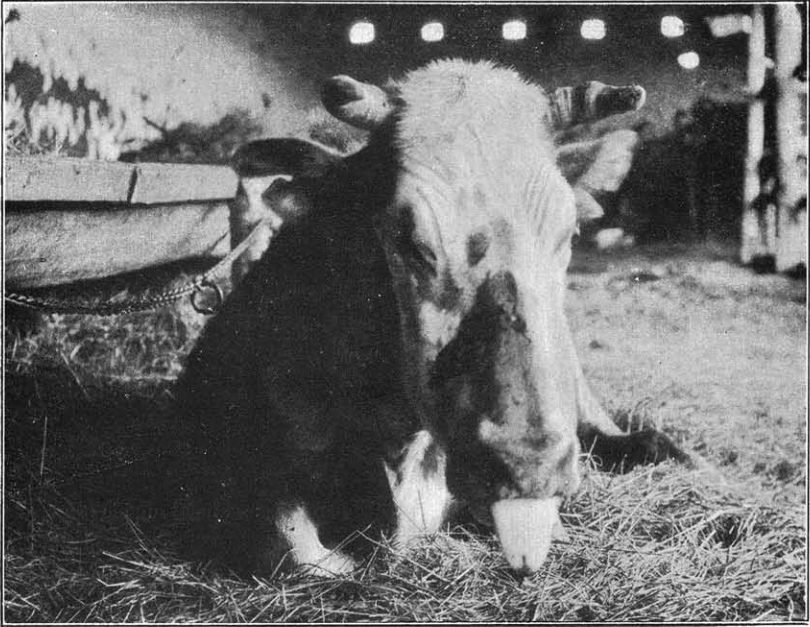


Fig. 5.—Paralysis of the Tongue.

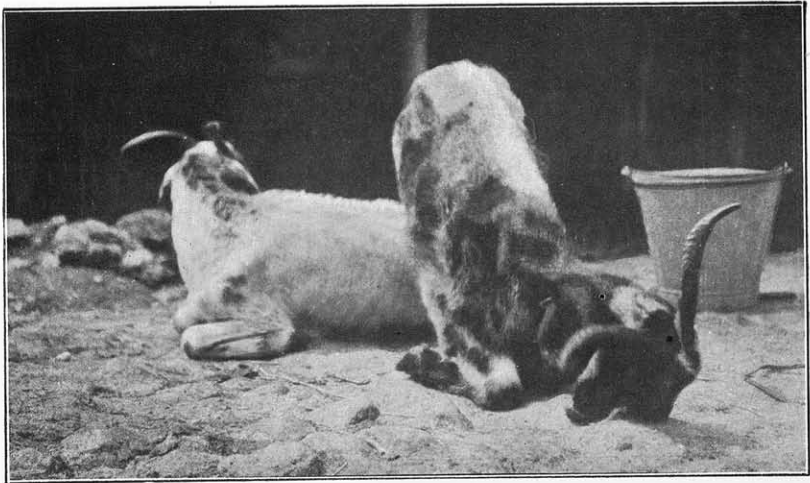


Fig. 6.—Paralysis in Goats: animal unable to rise.

*Lamsichte.*]

[*Theiler and Others.*



Fig. 7.—Lamsiekte in Goats, showing complete paralysis : animals unable to rise but feeding.

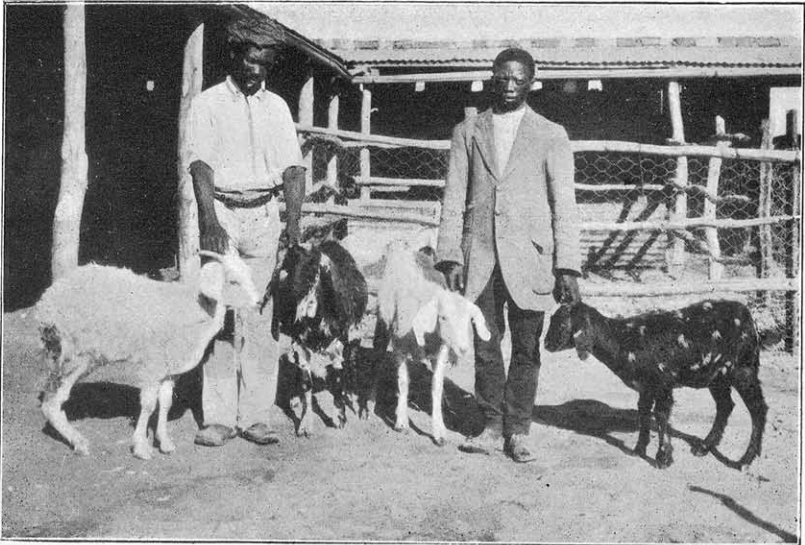


Fig. 8.—Same Goats as in fig. 7 after recovery.

*Lamsiekte.*]

[*Theiler and Others.*

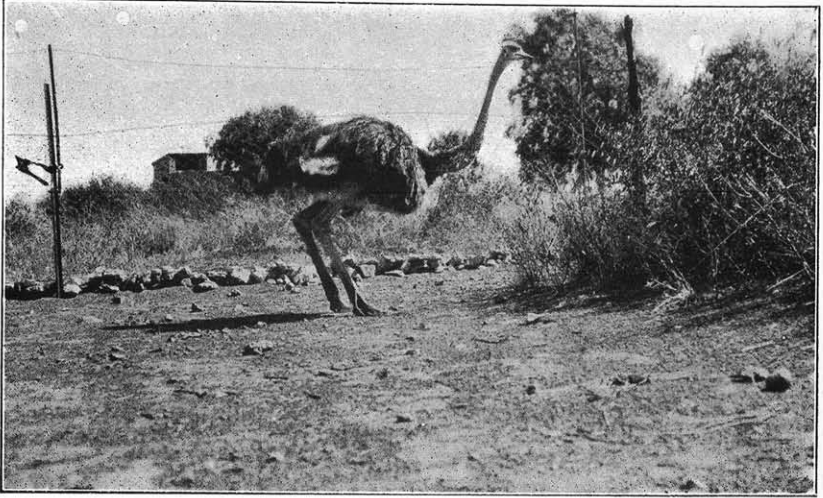


Fig. 9.—Early Stage of Lamsiekte in the Ostrich.



Fig. 10.—Final Stage of Lamsiekte in the Ostrich.

*Lamsiekte.*

[*Theiler and Others.*

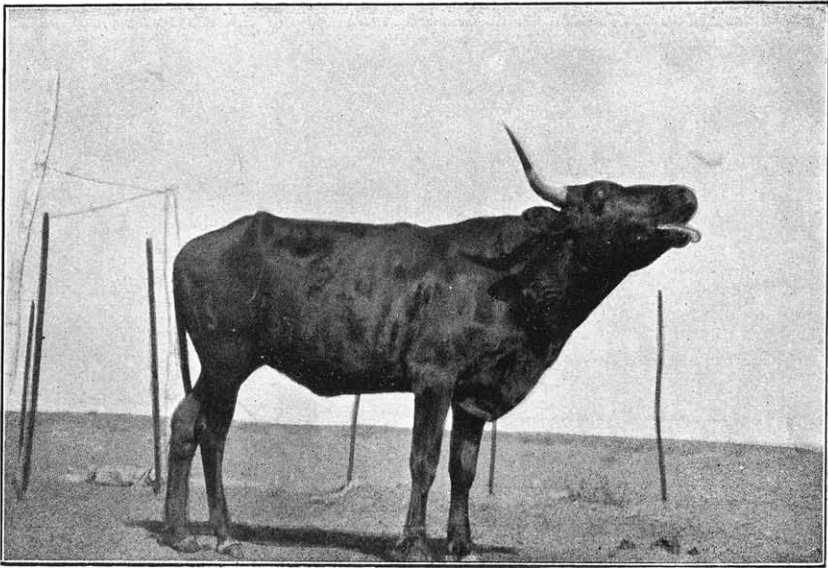


Fig. 11.—Osteophagia : bone-chewing.

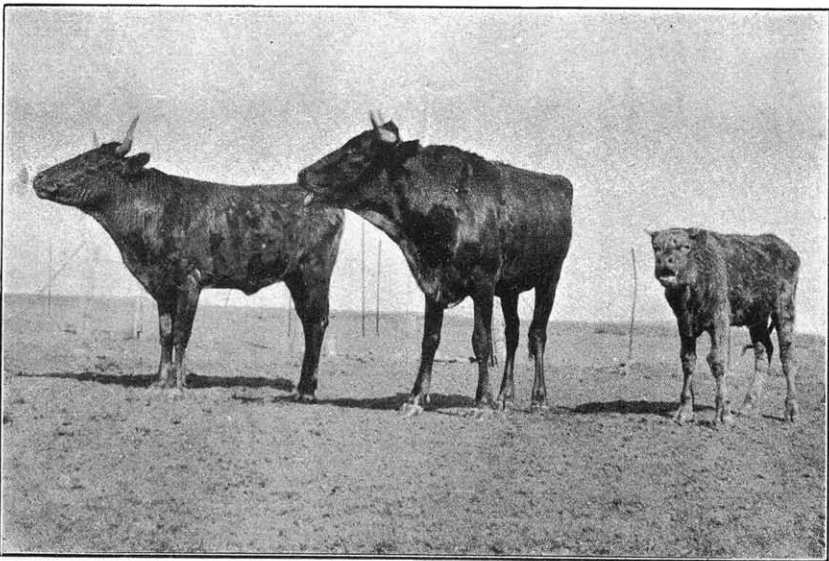


Fig. 12.—Osteophagia : bone-chewing.

*Lamsiekte.*]

[*Theiler and Others.*



Fig. 13.—Rotten-bone Feeding Experiment : animals picking bones from troughs.

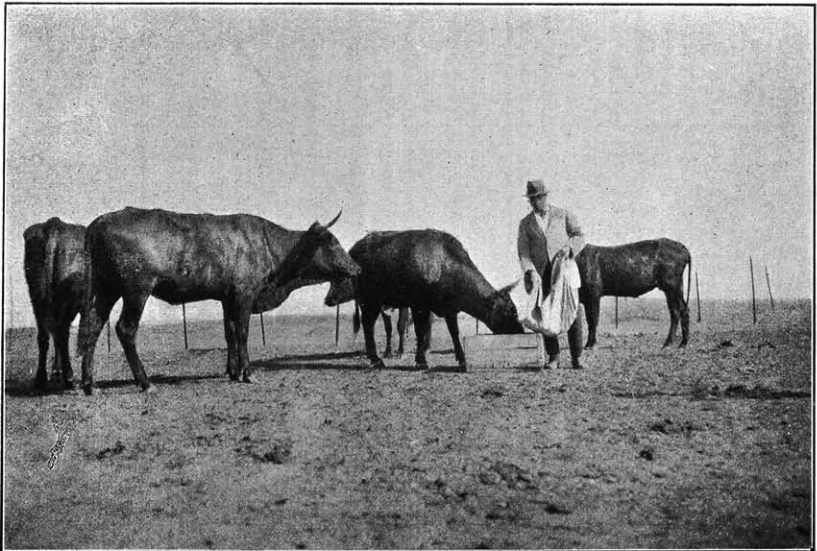


Fig. 14.—Rotten-bone Feeding Experiment : showing eagerness of cattle to obtain the rotten bones that are being emptied into troughs.]

*Lamsiekte.*]

[*Theiler and Others.*