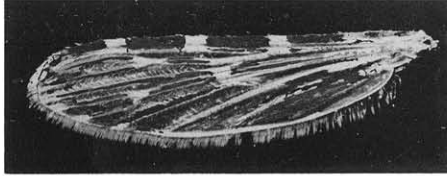
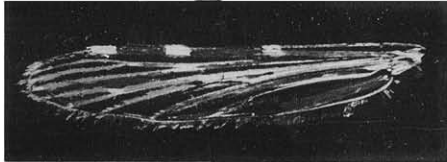


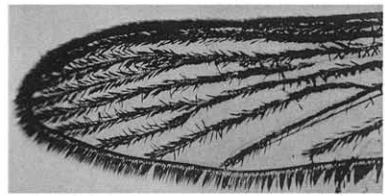
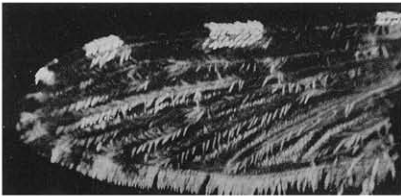
Plate I.



*Myzomyia rhodesiensis*. Theob. ♀.



*Myzomyia rhodesiensis*. Theob. ♂.



*Pyretophorus quadripunctata*. nov. sp. ♀.

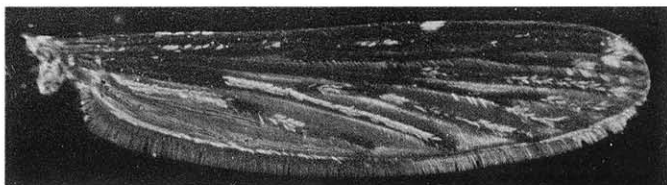


*Pyretophorus maculipalpis*. Theob. ♀.



*Pyretophorus maculipalpis*. Theob. ♂.

Plate II.



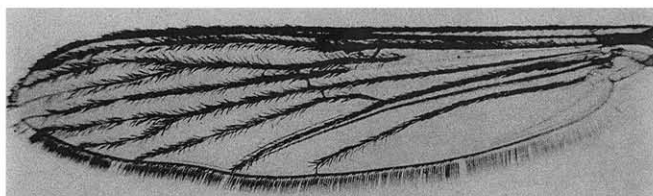
*Myzorhynchus mauritanus*. Grandpré. ♀.



*Myzorhynchus mauritanus*. Grandpré. ♀.



*Pyretophorus cinereus*. Theob. ♀.

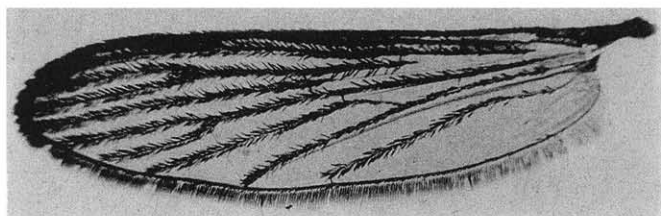


*Pyretophorus cinereus*. Theob. ♀.

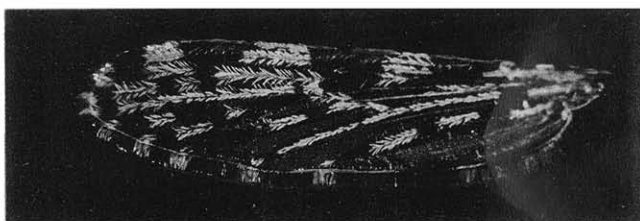
Plate III.



*Pyretophorus costalis*. Loew. ♀ (typical).



*Pyretophorus costalis*. Loew. ♀ (typical).

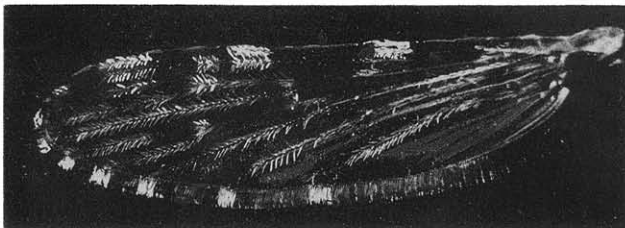


*Pyretophorus costalis*. Loew. ♀. Var. I.

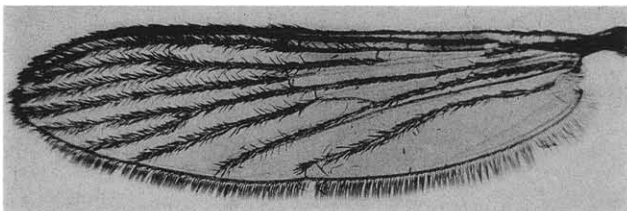


*Pyretophorus costalis*. Loew. ♀. Var. I.

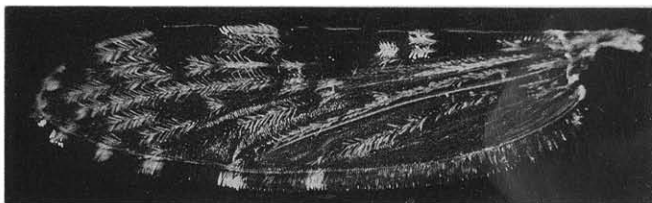
Plate IV.



*Pyretophorus costalis*. Loew. ♀. Var. 2.



*Pyretophorus costalis*. Loew. ♀. Var. 2.

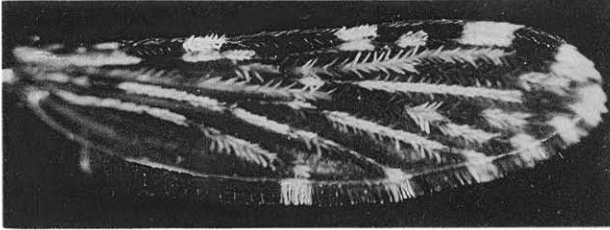


*Pyretophorus costalis*. Loew. ♀. Var. 3.

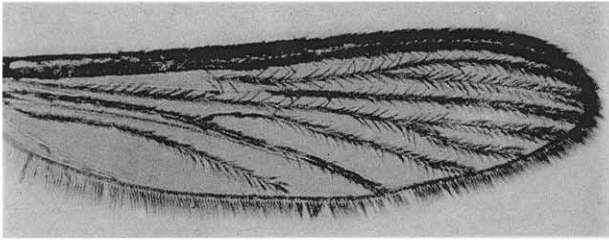


*Pyretophorus costalis*. Loew. ♀. Var. 3.

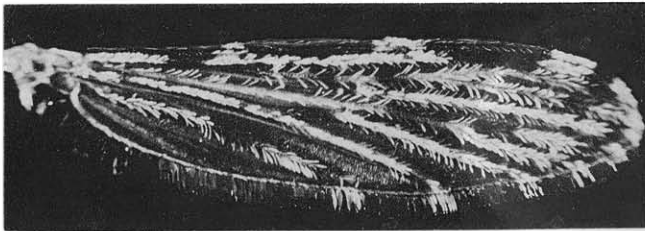
Plate V.



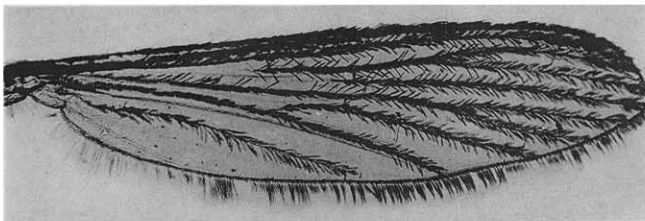
*Pyretophorus transvaalensis*. Carter. ♀.



*Pyretophorus transvaalensis*. Carter. ♀.



*Pyretophorus albipes*. nov. sp. ♀.

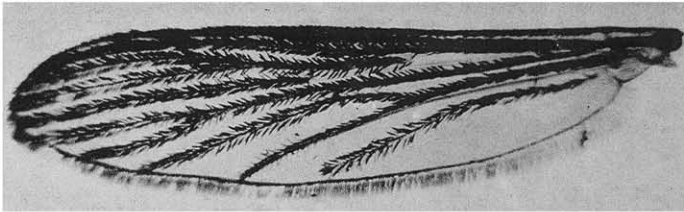


*Pyretophorus albipes*. nov. sp. ♀.

Plate VI.



*Nyssorhynchus pretoriensis*. Theob. ♀.



*Nyssorhynchus pretoriensis*. Theob. ♀.



*Pyretophorus aureosquamiger*. Theob. ♀.

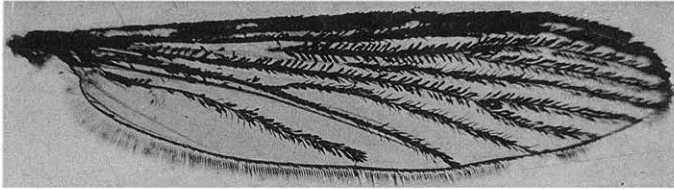


*Pyretophorus aureosquamiger*. Theob. ♀.

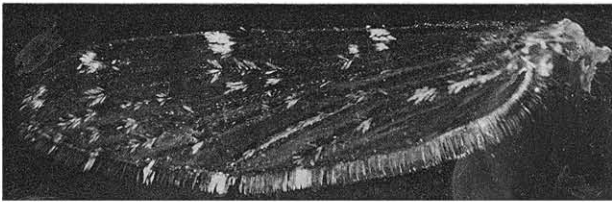
Plate VII.



*Cellia squamosa*. Theob. ♀.



*Cellia squamosa*. Theob. ♀.

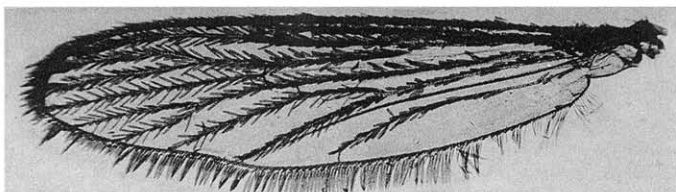


*Cellia argenteolobata*. Gough. ♀.

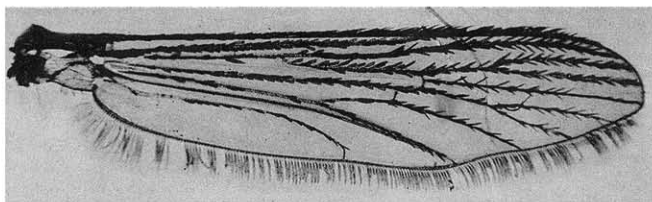


*Cellia argenteolobata*. Gough. ♀.

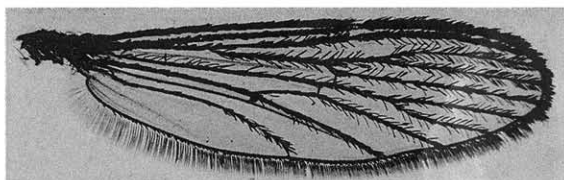
Plate VIII.



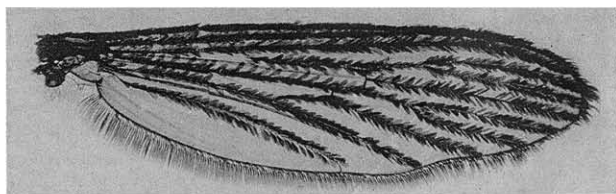
*Stegomyia fasciata*. Fab. ♀.



*Stegomyia simpsoni*. Theob. ♀.



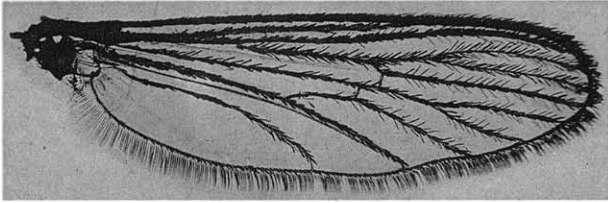
*Stegomyia argenteopunctata*. Theob. ♀.



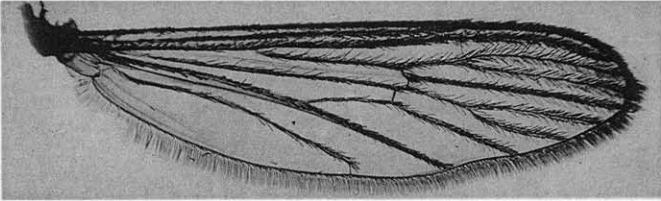
*Mansonia africana*. Theob. ♀.



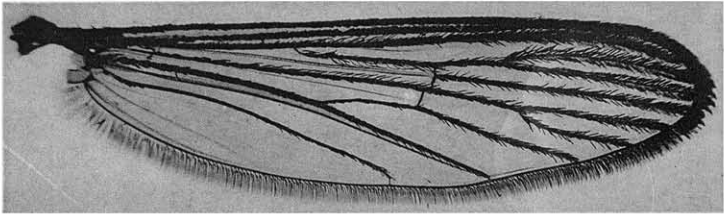
Plate IX.



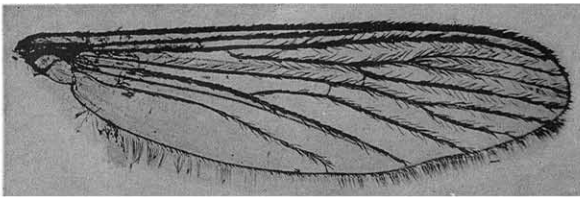
*Culex transvaalensis*. Theob. ♀.



*Culex hirsutipalpis*. Theob. ♀.

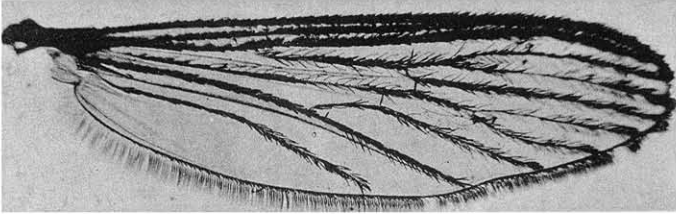


*Culex tigripes*. Grandpré. ♀.

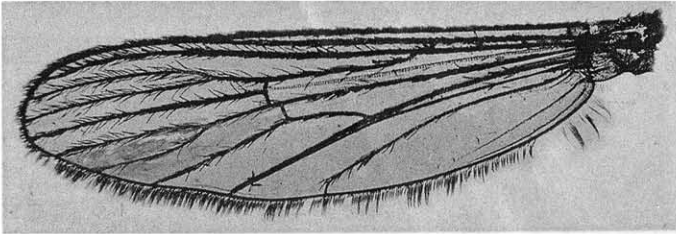


*Culex bostockii*. Theob. ♀.

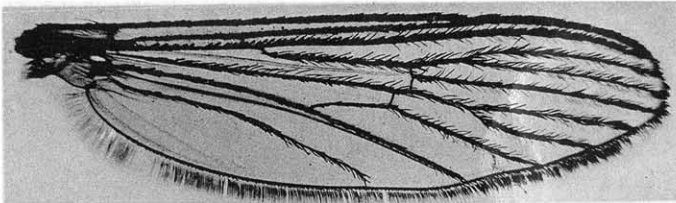
Plate X.



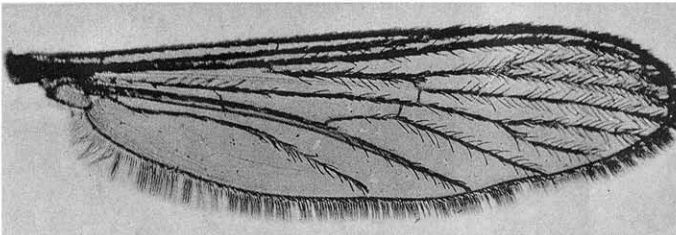
*Culex quasiguiarti*, Theob. ♀.



*Culex onderstepoortensis*, nov. sp. ♀.



*Culex theileri*, Theob. ♀.

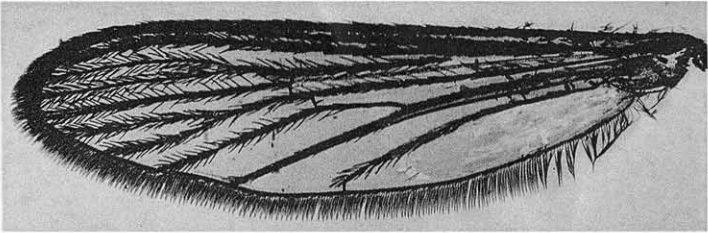


*Culex pallidopunctata*, nov. sp. ♀.

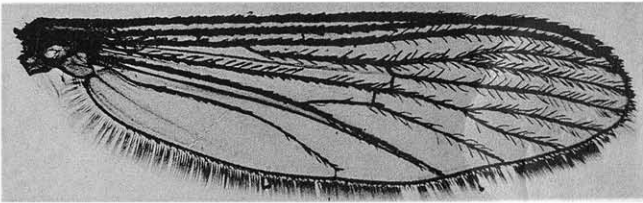
Plate XI.



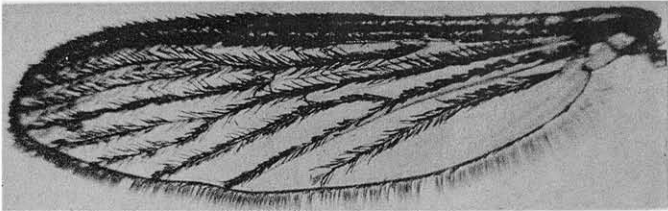
*Culex annulioris*. Theob. ♀.



*Culex goughii*. nov. sp. ♀.



*Banksinella luteolateralis*. Theob. ♀.



*Taeniorhynchus tenax*. var. *maculipes*. Theob. ♀.